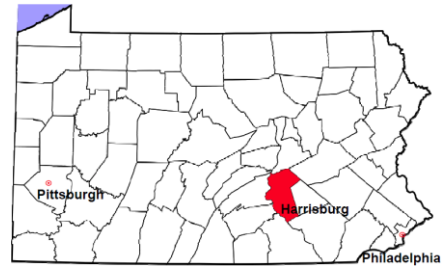


# Dauphin County

2012 Population Estimate: 269,665  
 Class of County: 3rd  
 No. of Common Pleas Court Judgeships: 10



## 2012 Criminal No. of Cases

Cases Pending 1/1/2012	4,088
New Cases Filed in 2012	6,108
Reopened Cases	394
<b>Cases Available for Disposition</b>	<b>10,590</b>

### Disposed by:

Withdrawn/Dismissed	394	7.2%
ARD	728	13.3%
Guilty Plea	3,848	70.5%
Non-Jury Trial	26	0.5%
Jury Trial	69	1.3%
Inactive	344	6.3%
Other	48	0.9%
<b>Total Cases Disposed</b>	<b>5,457</b>	<b>100.0%</b>

<b>Cases Pending 12/31/2012</b>	<b>5,133</b>
Cases Awaiting Sentencing	105

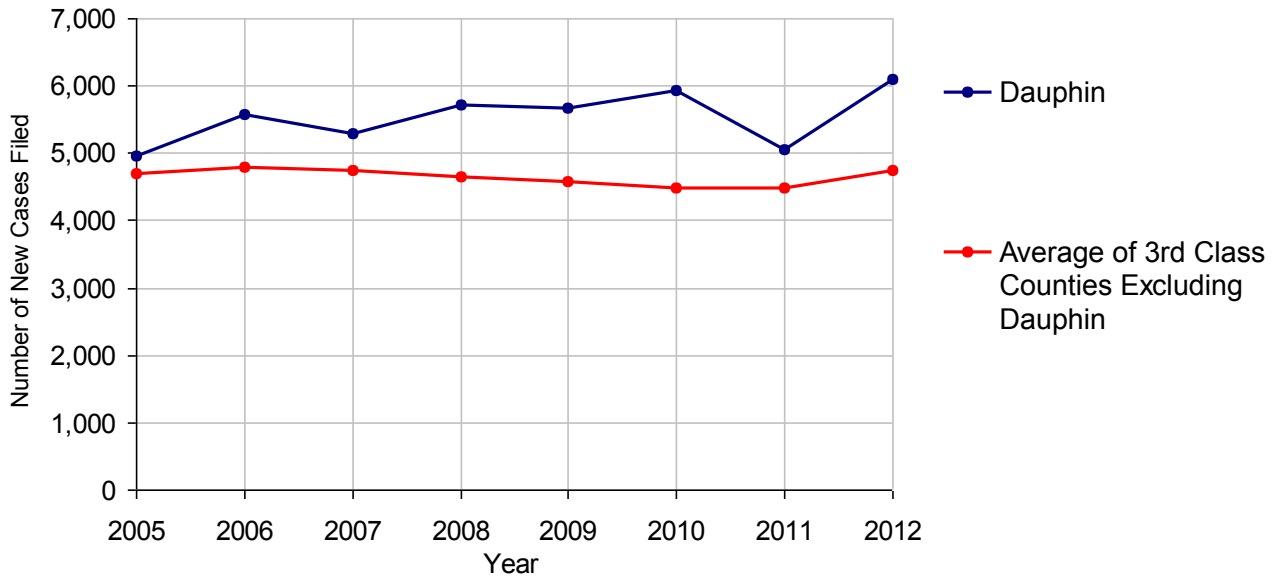
Data provided by CPCMS



### Age of Pending Cases as of 12/31/2012

0-60 Days	947	18.4%
61-120 Days	935	18.2%
121-180 Days	762	14.8%
181-240 Days	549	10.7%
241-300 Days	466	9.1%
301-360 Days	470	9.2%
Over 360 Days	1,004	19.6%
<b>Total</b>	<b>5,133</b>	<b>100.0%</b>

**Criminal New Cases Filed, 2005-2012**

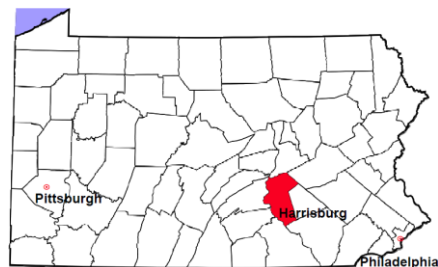


# Dauphin County

2012 Population Estimate: 269,665

Class of County: 3rd

No. of Common Pleas Court Judgeships: 10



## 2012 Criminal - New Cases by Case Type



Case Type	Felony	Misdemeanor	Summary /Ungraded	Total
Person	490	596	0	1,086
Property	709	885	22	1,616
Drug	608	714	4	1,326
Weapon	112	33	0	145
Public Order	184	423	2	609
Motor Vehicle - DWI/DUI	0	1,297	3	1,300
Motor Vehicle - Other	1	19	2	22
Other	0	3	1	4
<b>Total</b>	<b>2,104</b>	<b>3,970</b>	<b>34</b>	<b>6,108</b>
	<b>34.4%</b>	<b>65.0%</b>	<b>0.6%</b>	<b>100.0%</b>

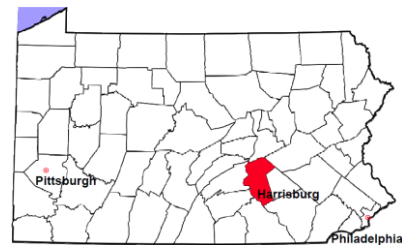
Data provided by CPCMS

# Dauphin County

2012 Population Estimate: 269,665

Class of County: 3rd

No. of Common Pleas Court Judgeships: 10

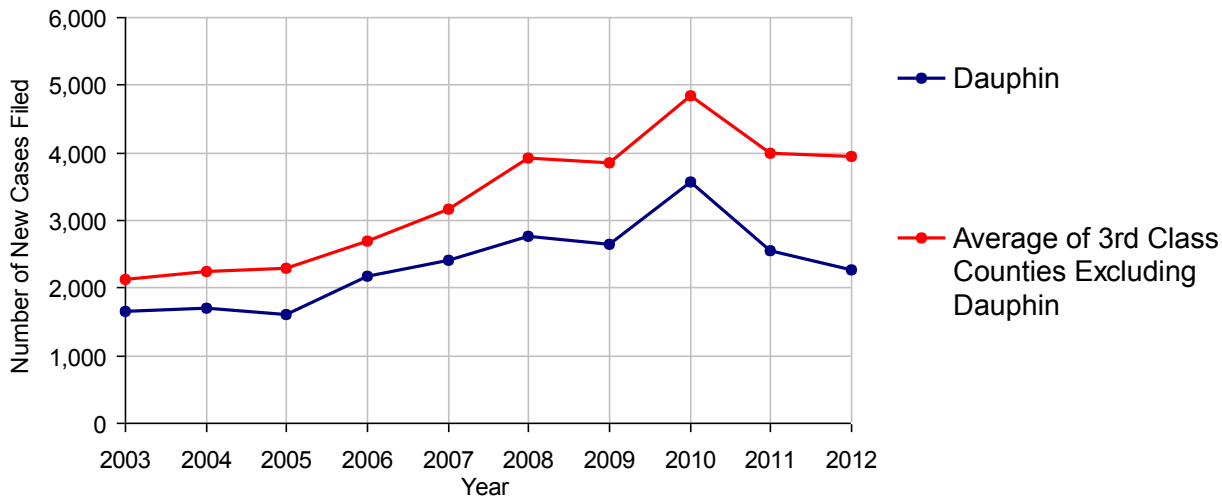


2012 Civil	Civil Action	Other	Total
Cases Pending 1/1/2012	3,397	1,919	5,316
Docketed Cases	1,020	1,244	2,264
Arbitration Appeals	10	7	17
Transferred In	10	2	12
Returned to Active	30	30	60
<b>Cases Available for Processing</b>	<b>4,467</b>	<b>3,202</b>	<b>7,669</b>
Disposed By:			
Default Judgments	272	713	985
Cases Decided by Arbitration Board	41	17	58
Dispositive Motions	38	25	63
Settlements	407	191	598
Moved to Inactive Status	18	21	39
Transferred/Withdrawn	101	29	130
Administrative Purge	912	521	1,433
Other	290	467	757
Jury Trial	17	2	19
Non-Jury Trial	0	108	108
<b>Total Cases Disposed</b>	<b>2,096</b>	<b>2,094</b>	<b>4,190</b>
<b>Cases Pending 12/31/2012</b>	<b>2,371</b>	<b>1,108</b>	<b>3,479</b>

## Age of Pending Cases as of 12/31/2012 (Civil Action Only)

0-6 months	427	18.0%
7-12 months	324	13.7%
13-18 months	251	10.6%
19-24 months	283	11.9%
25-30 months	195	8.2%
31-36 months	109	4.6%
37-42 months	97	4.1%
43-48 months	71	3.0%
49-54 months	54	2.3%
55-60 months	52	2.2%
61-66 months	26	1.1%
67-72 months	18	0.8%
Over 72 months	464	19.6%
<b>Total</b>	<b>2,371</b>	<b>100.0%</b>

Docketed Cases, 2003-2012



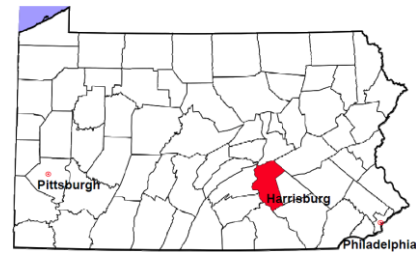
Note: Prior to June 2010, docketed cases under the "Other" category were not reported. The inclusion of these cases starting from June 2010 may contribute to an increase in docketed cases from 2009 to 2010.

# Dauphin County

2012 Population Estimate: 269,665

Class of County: 3rd

No. of Common Pleas Court Judgeships: 10



## 2012 Civil - Docketed Cases Listed by Case Type

<b>TORT</b>	<b>480</b>	<b>21.2%</b>	<b>REAL PROPERTY</b>	<b>960</b>	<b>42.4%</b>
<i>(does not include mass tort)</i>			Ejectment*	61	
Intentional	18		Eminent Domain/Condemnation	48	
Malicious Prosecution	0		Ground Rent	2	
Motor Vehicle	326		Landlord/Tenant Dispute	11	
Nuisance	0		Mortgage Foreclosure:		
Premise Liability	59		Residential*	766	
Product Liability	8		Commercial*	12	
Slander/Libel/Defamation	3		Partition of Real Property*	7	
Other	66		Quiet Title*	24	
<b>MASS TORT</b>	<b>33</b>	<b>1.5%</b>	Other*	29	
Asbestos	33		<b>CIVIL APPEALS</b>	<b>108</b>	<b>4.8%</b>
Tobacco	0		<i>- Administrative Agencies</i>		
Toxic Tort - DES	0		Board of Assessment*	12	
Toxic Tort - Implant	0		Board of Elections*	13	
Toxic Waste	0		Dept. of Transportation*	71	
Other	0		Zoning Board*	6	
<b>PROFESSIONAL LIABILITY</b>	<b>42</b>	<b>1.9%</b>	Statutory Appeal - Other*	4	
Dental	3		Other*	2	
Legal	3		<b>MISCELLANEOUS</b>	<b>189</b>	<b>8.3%</b>
Medical Malpractice	33		Common Law/		
Other	3		Statutory Arbitration*	1	
<b>CONTRACT</b>	<b>452</b>	<b>20.0%</b>	Declaratory Judgment*	22	
<i>(does not include judgments)</i>			Mandamus*	6	
Buyer Plaintiff	14		Non-Domestic Relations		
Debt Collection: Credit Card	109		Restraining Order*	0	
Debt Collection: Other	205		Quo Warranto*	1	
Employment Dispute:			Replevin*	12	
Employment Dispute: Discriminatio	2		Other*	147	
Employment Dispute: Other	10		<b>TOTAL DOCKETED CASES:</b>	<b>2,264</b>	<b>100%</b>
Other	112				

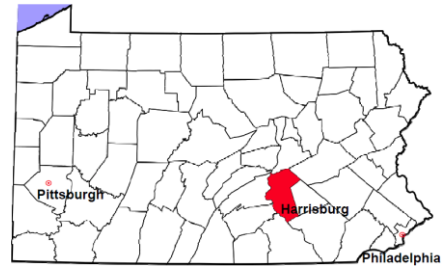
### Of the Docketed Cases:

Pro Se Filings: 257 11.4%      Class Action Suits: 0      MDJ Appeals: 334 14.8%

\* Civil Other

# Dauphin County

2012 Population Estimate: 269,665  
 Class of County: 3rd  
 No. of Common Pleas Court Judgeships: 10



## 2012 Protection From Abuse

**No. of  
Petitions**

Cases Pending 1/1/2012 55

New Cases Filed in 2012 921

*Of these, Petitions Requesting Temporary Orders: 921 (100.0%)*

*Temporary Orders DENIED: 205 (22.3%), Temporary Orders GRANTED: 716 (77.7%)*

**Cases Available for Processing 976**

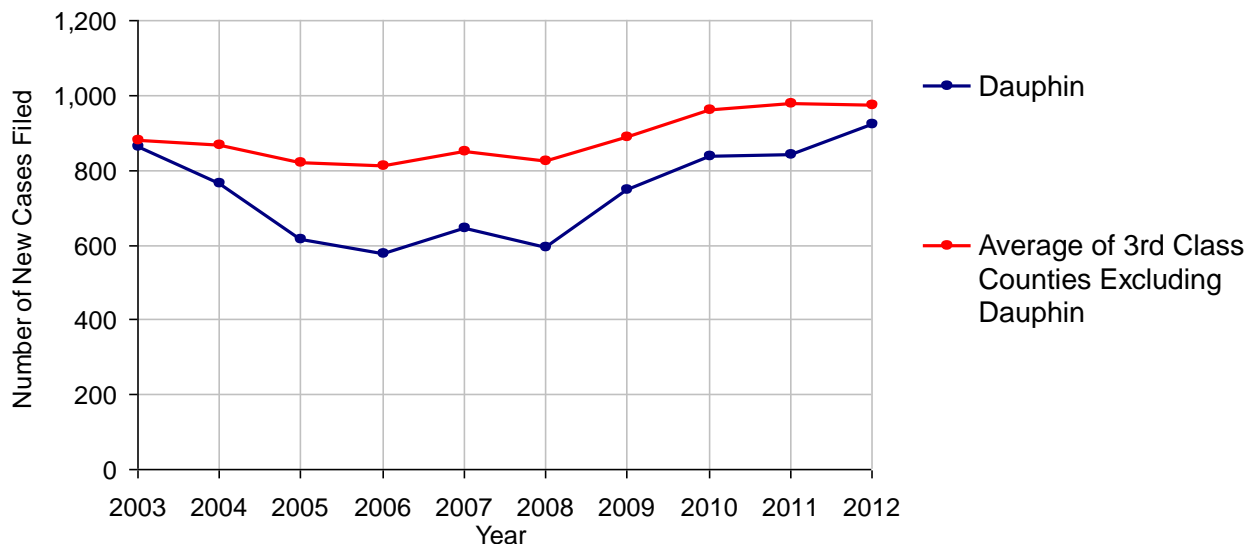
Processed By:

Temporary Order DENIED After Ex Parte Hearing and No Evidentiary Hearing Scheduled	1	0.1%
Temporary Order DISMISSED After Evidentiary Hearing and No Final Order Entered	250	27.4%
Final Order DENIED After Evidentiary Hearing Before a Judge	0	
Final Order GRANTED After Evidentiary Hearing Before a Judge	192	21.0%
Plaintiff Did Not Appear For Evidentiary Hearing	167	18.3%
Final Order by STIPULATION OR AGREEMENT Between the Parties	212	23.2%
Petition WITHDRAWN by Plaintiff	78	8.5%
TRANSFERRED to Another Jurisdiction	2	0.2%
DECEASED Party	4	0.4%
Other	7	0.8%

**Cases Processed 913 100.0%**

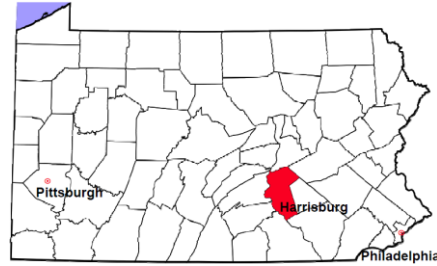
**Cases Pending 12/31/2012 63**

**PFA New Cases Filed, 2003-2012**



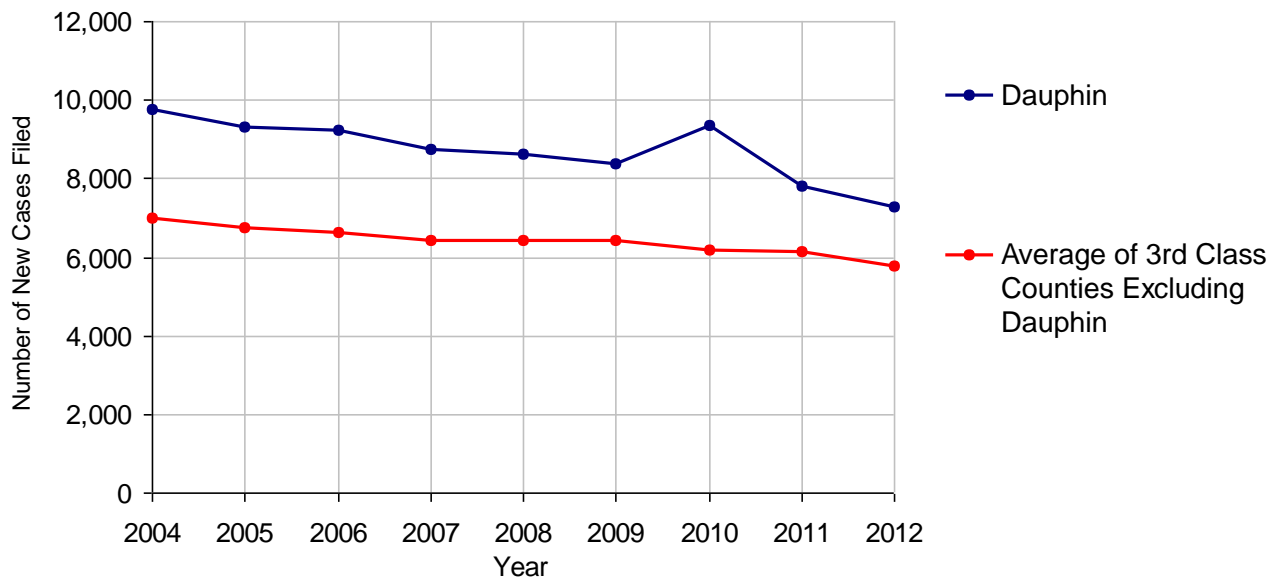
# Dauphin County

2012 Population Estimate: 269,665  
 Class of County: 3rd  
 No. of Common Pleas Court Judgeships: 10



<b>2012 Spousal &amp; Child Support</b>	<b>No. of Petitions</b>	
Cases Pending 1/1/2012	2,638	
New Cases Filed in 2012	7,301	
Dockets Transferred In (+)	113	
Dockets Transferred Out (-)	66	
<b>Cases Available for Processing</b>	<b>9,986</b>	
Processed By:		
Judge	390	5.0%
Intake Officer	7,365	95.0%
Hearing Officer	1	<0.1%
Other	0	
<b>Cases Processed</b>	<b>7,756</b>	<b>100.0%</b>
<b>Cases Pending 12/31/2012</b>	<b>2,230</b>	

**Spousal & Child Support New Cases Filed, 2004-2012**

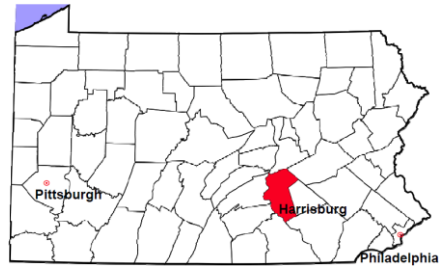


# Dauphin County

2012 Population Estimate: 269,665

Class of County: 3rd

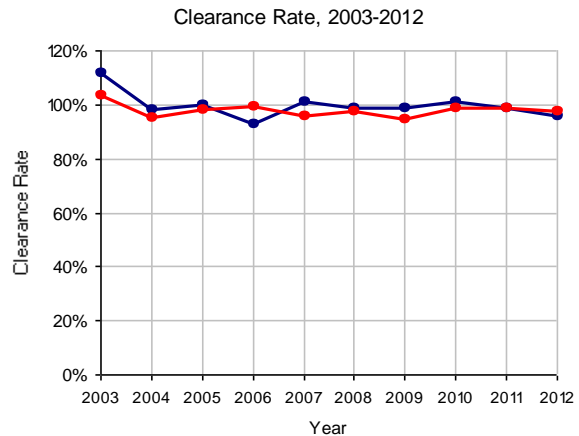
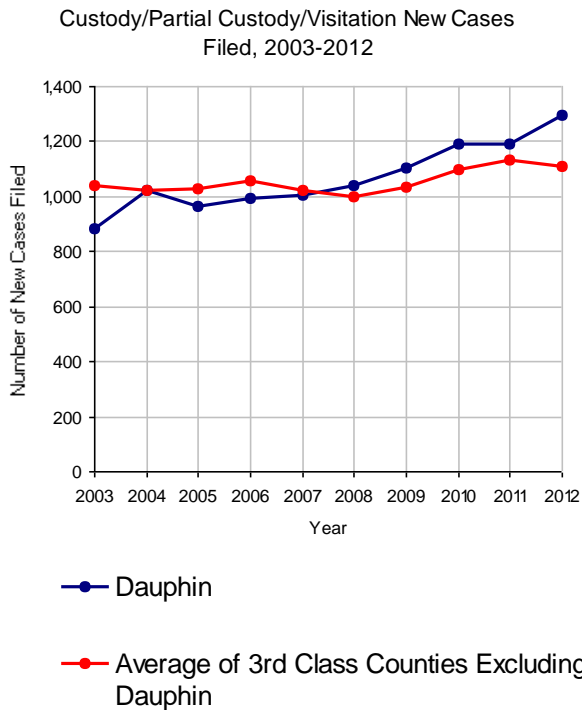
No. of Common Pleas Court Judgeships: 10



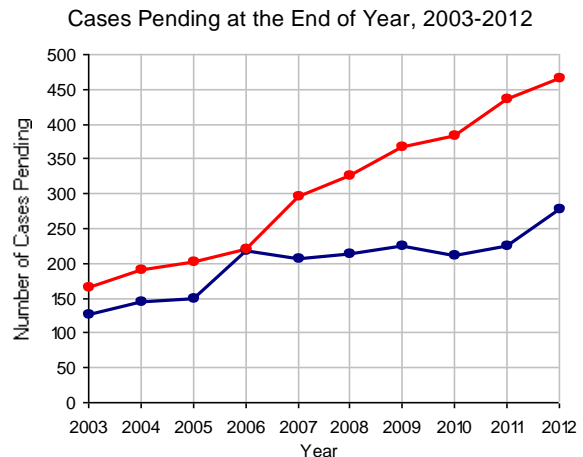
## 2012 Custody/Partial Custody/Visitation

No. of  
Petitions

Cases Pending 1/1/2012	225
New Cases Filed in 2012	1,294
<b>Cases Available for Processing</b>	<b>1,519</b>
Processed By:	
Judge	181 14.6%
Non-Judicial Officer	686 55.3%
Other	374 30.1%
<b>Cases Processed</b>	<b>1,241 100.0%</b>
<b>Cases Pending 12/31/2012</b>	<b>278</b>

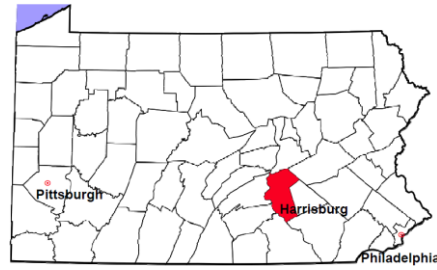


Note: Clearance Rate = Cases Processed / New Cases Filed



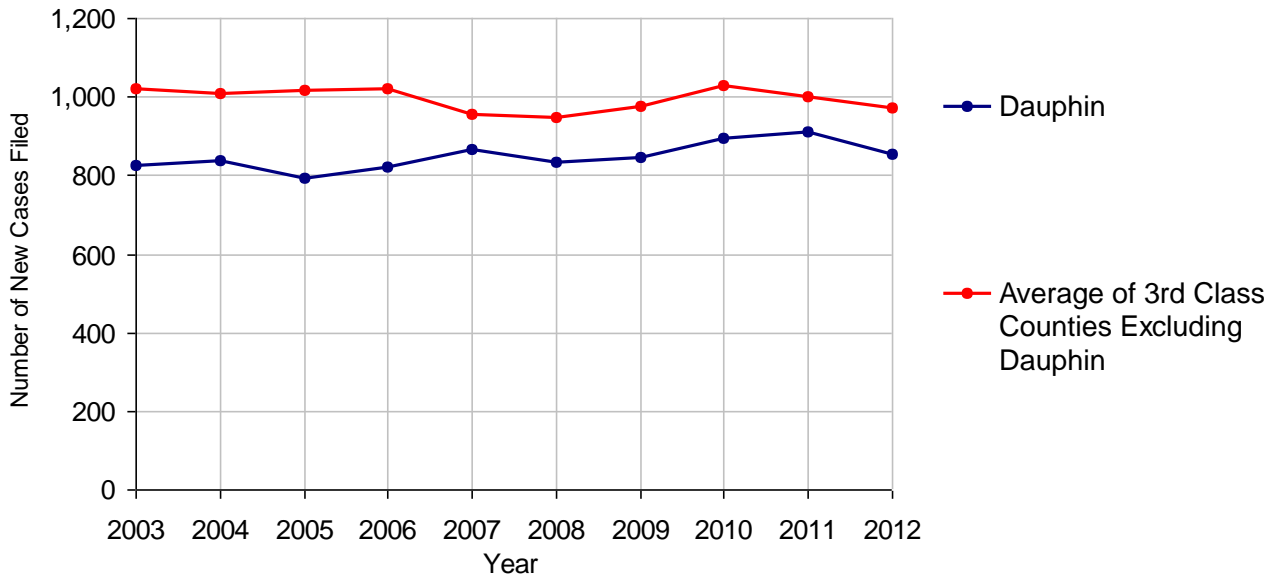
# Dauphin County

2012 Population Estimate: 269,665  
 Class of County: 3rd  
 No. of Common Pleas Court Judgeships: 10



<b>2012 Divorce</b>	<b>No. of Petitions</b>	
Cases Pending 1/1/2012	1,305	
New Cases Filed in 2012	853	
<b>Cases Available for Processing</b>	<b>2,158</b>	
Processed By:		
Contested Before a Judge	2	0.2%
Contested Before a Master	10	1.0%
Uncontested	709	72.9%
Other	251	25.8%
<b>Cases Processed</b>	<b>972</b>	<b>100.0%</b>
<b>Cases Pending 12/31/2012</b>	<b>1,186</b>	

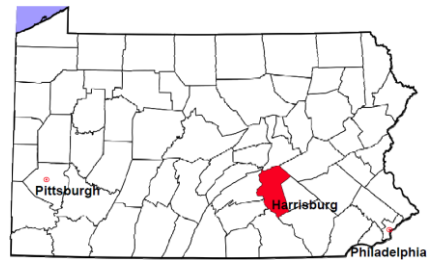
**Divorce New Cases Filed, 2003-2012**





# Dauphin County

2012 Population Estimate: 269,665  
 Class of County: 3rd  
 No. of Common Pleas Court Judgeships: 10



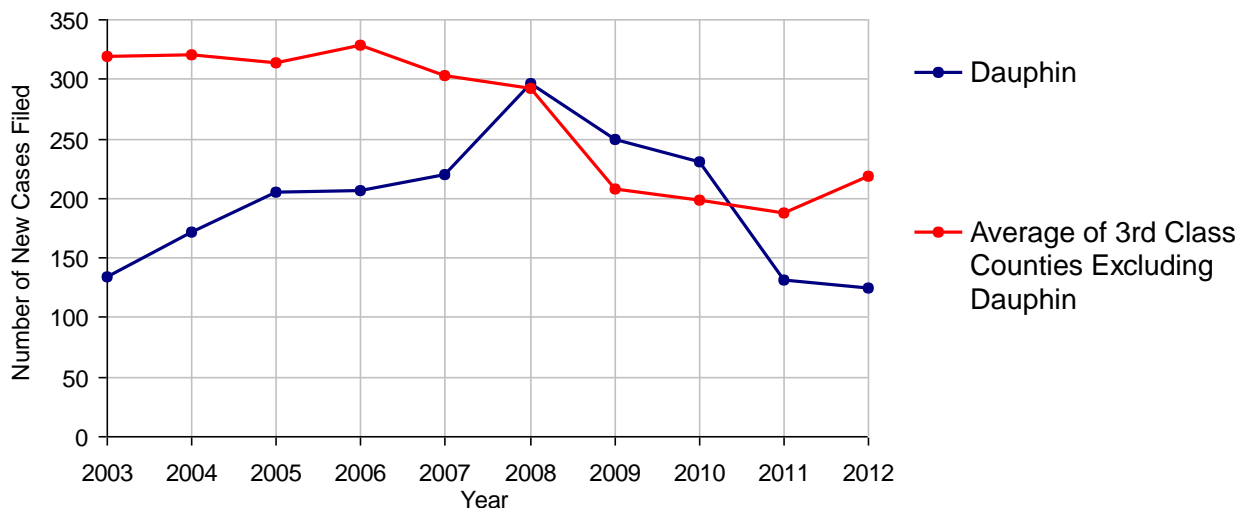
## 2012 Juvenile Dependency - Active Dependent Inventory



	Abuse/ Neglect	Status Offenses	Total
Cases Pending 1/1/2012	5	0	5
New Petitions Filed in 2012	108	17	125
Other	0	0	0
<b>Total Petitions Available for Processing</b>	<b>113</b>	<b>17</b>	<b>130</b>
Processed by:			
Adjudicated Dependent			
Judge	2	0	2
Master	88	13	101
Adjudicated NOT Dependent			
Judge	0	0	0
Master	3	2	5
Withdrawn/Dismissed/Inactive	1	0	1
Other	9	1	10
<b>Total Petitions Processed</b>	<b>103</b>	<b>16</b>	<b>119</b>
<b>Cases Pending 12/31/2012</b>	<b>10</b>	<b>1</b>	<b>11</b>

Data provided by CPCMS

Abuse/Neglect and Status Offenses New Cases Filed, 2003-2012



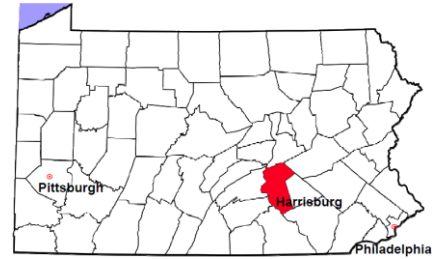
Note: Dependency data for 2002-2010 were collected manually. Dependency data for 2011 and 2012 were provided by CPCMS.

# Dauphin County

2012 Population Estimate: 269,665

Class of County: 3rd

No. of Common Pleas Court Judgeships: 10



## 2012 Juvenile Dependency - Adjudicated Dependent Inventory



	Abuse/ Neglect	Status Offenses	Total
Cases Pending 1/1/2012	422	24	446
New Adjudicated Dependent Cases	90	13	103
Other	4	0	4
<b>Total Adjudicated Dependent Cases</b>	<b>516</b>	<b>37</b>	<b>553</b>

### Court Supervision Terminated:

Family Reunification	94	50.0%	9	75.0%	103	51.5%
Adoption	61	32.4%	0		61	30.5%
Placement with a Relative/Guardian	8	4.3%	1	8.3%	9	4.5%
Aged Out	16	8.5%	1	8.3%	17	8.5%
Other Permanency Outcomes*	5	2.7%	0		5	2.5%
Other**	4	2.1%	1	8.3%	5	2.5%
<b>Total Adjudicated Dependent Cases Terminated</b>	<b>188</b>	<b>100.0%</b>	<b>12</b>	<b>100.0%</b>	<b>200</b>	<b>100.0%</b>
<b>Cases Pending 12/31/2012</b>	<b>328</b>		<b>25</b>		<b>353</b>	

Data provided by CPCMS

\* Other Permanency Outcomes include: adjudicated delinquent, death due to natural causes, death due to negligence, emancipation, permanent living arrangement, and parent has come forward.

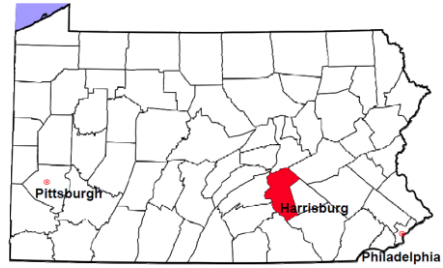
\*\* Other includes cases where court supervision is terminated due to transfer out of jurisdiction, withdrawal and administrative closure.

# Dauphin County

2012 Population Estimate: 269,665

Class of County: 3rd

No. of Common Pleas Court Judgeships: 10



## 2012 Juvenile Delinquency

**No. of Cases**

Cases Pending 1/1/2012 545

New Cases Filed in 2012 1,090

**Cases Available for Processing 1,635**

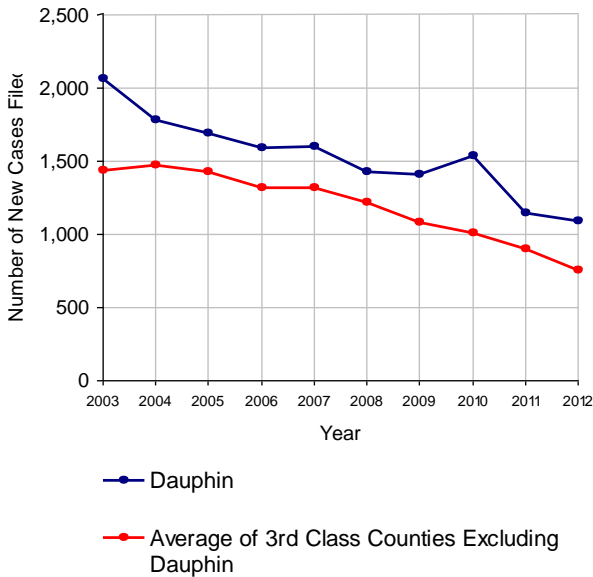
Processed By:

Judge	357	34.0%
Non-Judicial Officer	531	50.6%
Other	161	15.3%

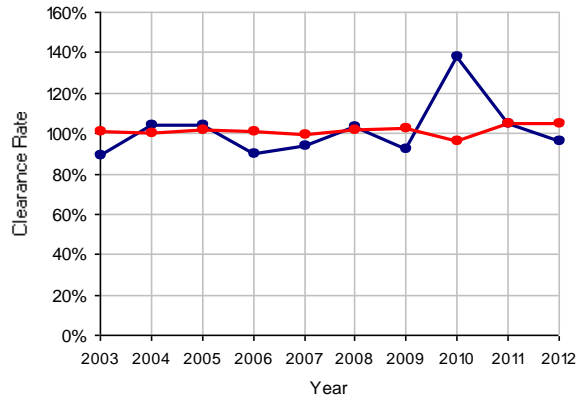
**Cases Processed 1,049 100.0%**

**Cases Pending 12/31/2012 586**

Juvenile Delinquency New Cases Filed, 2003-2012

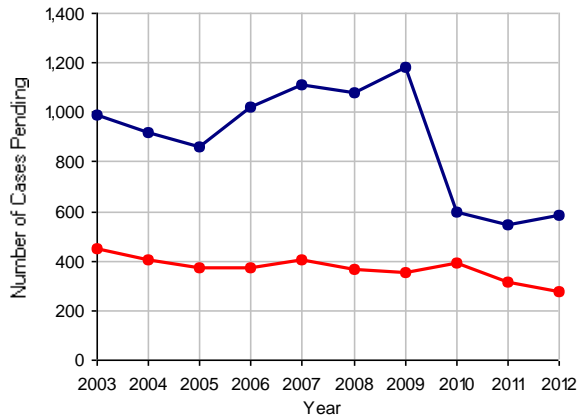


Clearance Rate, 2003-2012



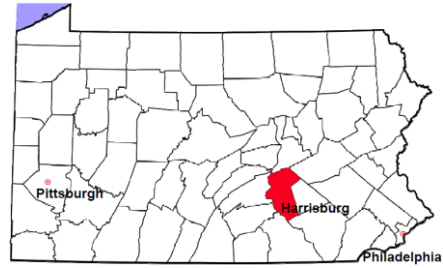
Note: Clearance Rate = Cases Processed / New Cases Filed

Cases Pending at the End of Year, 2003-2012



# Dauphin County

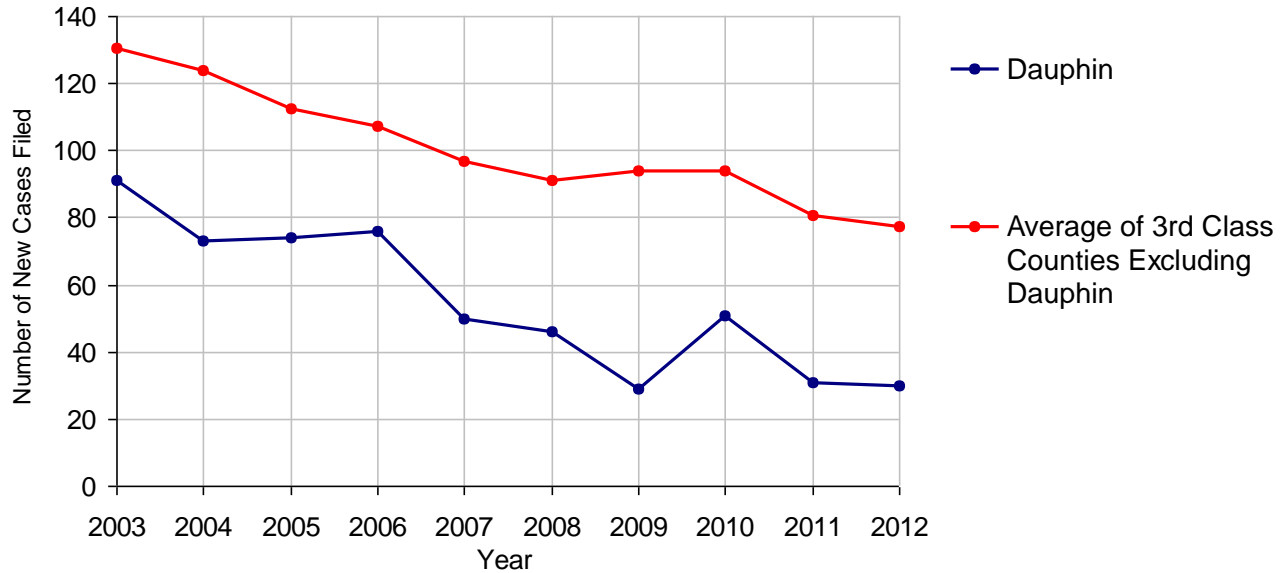
2012 Population Estimate: 269,665  
 Class of County: 3rd  
 No. of Common Pleas Court Judgeships: 10



<b>2012 Accounts</b>	<b>No. of Cases</b>	
Cases Pending 1/1/2012	35 (R)	
New Cases Filed in 2012	30	
<b>Cases Available for Processing</b>	<b>65</b>	
Processed By:		
Contested before a Judge	2	5.6%
Contested before a Non-judicial Officer	0	
Uncontested	23	63.9%
Other	11	30.6%
<b>Cases Processed</b>	<b>36</b>	<b>100.0%</b>
<b>Cases Pending 12/31/2012</b>	<b>29</b>	

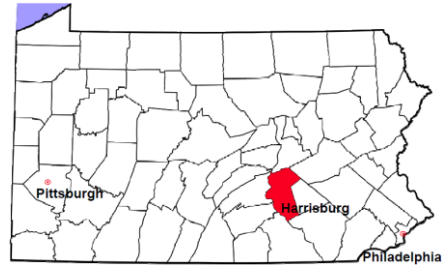
(R) - Revised

**Accounts New Cases Filed, 2003-2012**



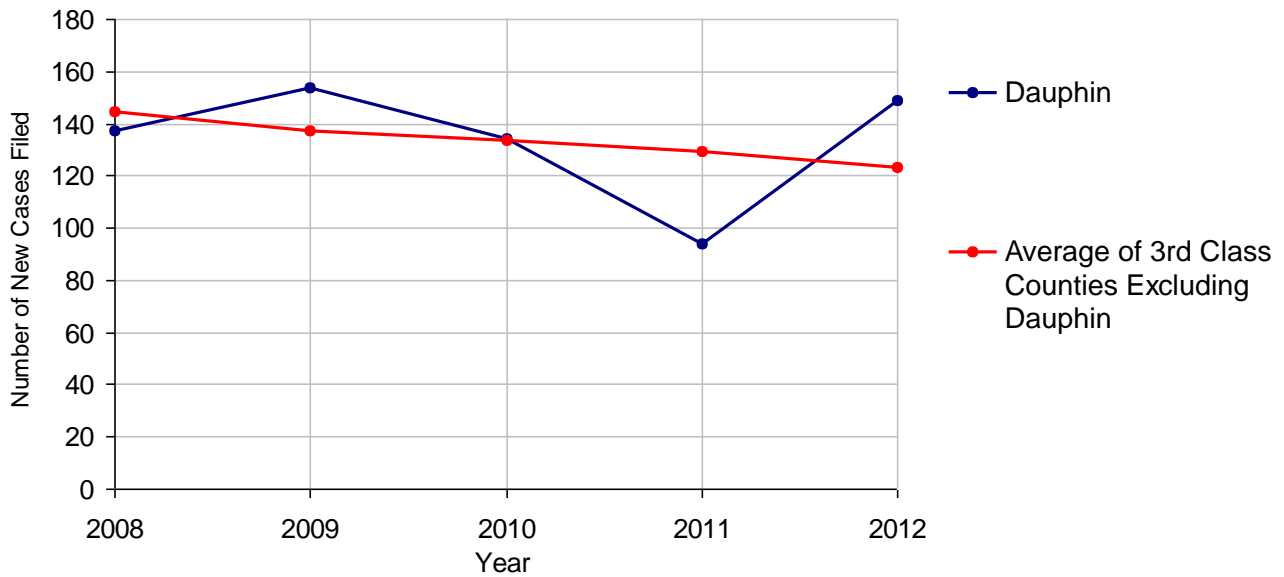
# Dauphin County

2012 Population Estimate: 269,665  
 Class of County: 3rd  
 No. of Common Pleas Court Judgeships: 10



<b>2012 Adoptions</b>		<b>No. of Cases</b>	
Cases Pending 1/1/2012		21	
New Cases Filed in 2012		149	
<b>Cases Available for Processing</b>		<b>170</b>	
Processed By:			
Contested before a Judge	Granted	0	
	Denied	0	
Uncontested	Granted	124	94.7%
	Denied	0	
Other		7	5.3%
<b>Cases Processed</b>		<b>131</b>	<b>100.0%</b>
<b>Cases Pending 12/31/2012</b>		<b>39</b>	

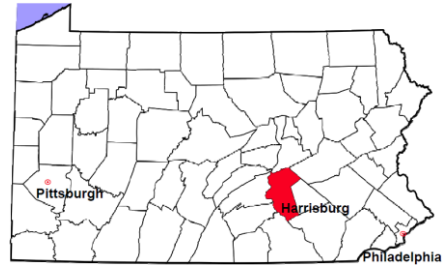
**Adoptions New Cases Filed, 2008-2012**



Note: Prior to 2008, each petition was counted as one new case, regardless of the number of children listed on the petition. Starting in 2008, each child listed on a petition is counted as a separate case. Therefore, statistics since 2008 should not be compared to statistics prior to 2008.

# Dauphin County

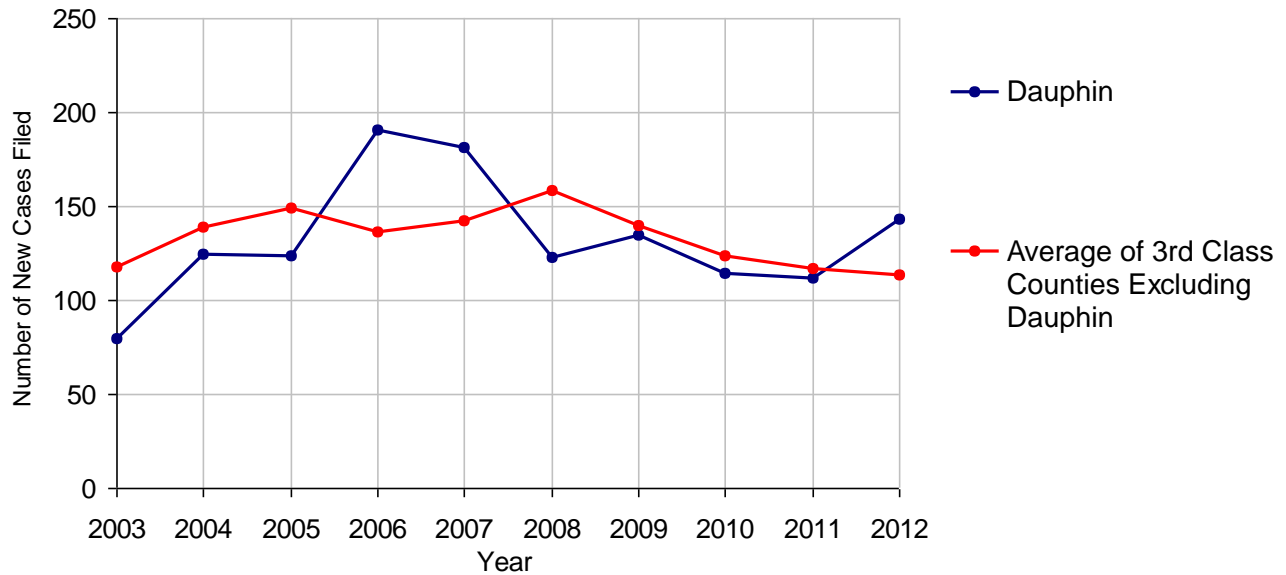
2012 Population Estimate: 269,665  
 Class of County: 3rd  
 No. of Common Pleas Court Judgeships: 10



2012 Relinquishments/Terminations	No. of Cases	
Cases Pending 1/1/2012	70 (R)	
New Cases Filed in 2012	143	
<b>Cases Available for Processing</b>	<b>213</b>	
Processed By:		
Contested before a Judge	22	14.1%
Uncontested	106	67.9%
Other	28	17.9%
<b>Cases Processed</b>	<b>156</b>	<b>100.0%</b>
<b>Cases Pending 12/31/2012</b>	<b>57</b>	

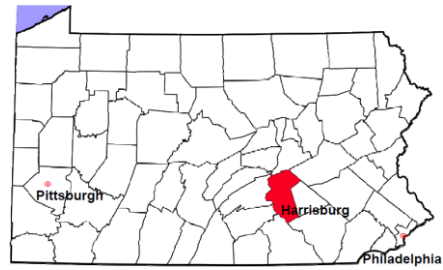
(R) - Revised

**Relinquishments/Terminations New Cases Filed, 2003-2012**



# Dauphin County

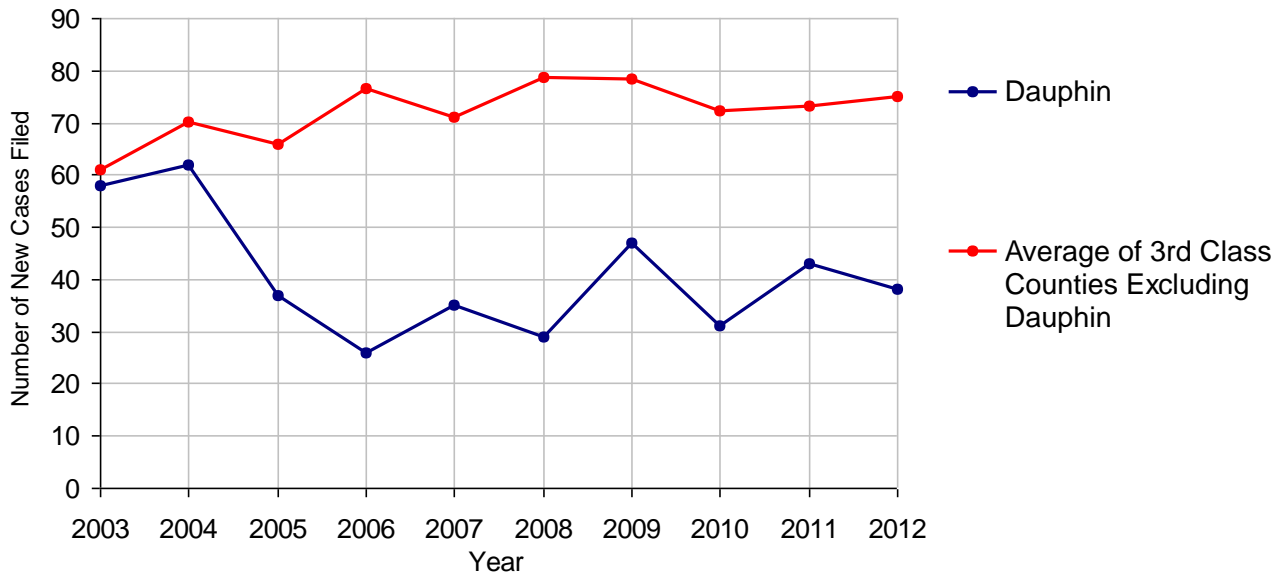
2012 Population Estimate: 269,665  
 Class of County: 3rd  
 No. of Common Pleas Court Judgeships: 10



<b>2012 Appointment of Guardians</b>	<b>No. of Cases</b>
Cases Pending 1/1/2012	16 (R)
New Cases Filed in 2012	38
<b>Cases Available for Processing</b>	<b>54</b>
Processed By:	
Contested before a Judge	0
Uncontested	22 78.6%
Other	6 21.4%
<b>Cases Processed</b>	<b>28 100.0%</b>
<b>Cases Pending 12/31/2012</b>	<b>26</b>

(R) - Revised

**Appointment of Guardians New Cases Filed, 2003-2012**



# Dauphin County

2012 Population Estimate: 269,665  
 Class of County: 3rd  
 No. of Common Pleas Court Judgeships: 10



## 2012 Jury Yield and Utilization

### Jury Yield

Qualification Questionnaires/Summonses Mailed:	8,581	A		
Returned Undeliverable:	364	B	4.2%	Of Qualification Questionnaires/Summonses Mailed
Not Responded to:	418	C	4.9%	
the Number of Prospective Jurors:				
Disqualified:	1,164	D	13.6%	
Exempted:	42	E	0.5%	
Excused:	2,917	F	34.0%	
Deferred to New Term:	1,055	G	12.3%	
Deferred from Previous Term:	1,045	H	12.2%	
<b>Total Number of Qualified Jurors Available for Service:</b>	<b>3,666</b>	<b>I</b>	<b>42.7%</b>	

*I=A-B-C-D-E-F-G+H*

### Jury Utilization

the Number of Jurors:				
Reporting for Service:	3,266		89.1%	Of Jurors Qualified and Available
Told Not to Report for Service:	112		3.1%	
Sent to Courtroom for Jury Selection (Voir Dire):	3,299		101.0%	Of Jurors Reporting for Service
Impanelled or Sworn (jurors/alternates):	1,359		41.6%	
Removed for Cause/Hardship:	105			
Removed by Peremptory Challenge:	217			

### Jury Costs

Total Annual Budget for Juror Operations:	\$384,396.00	J
Average Cost Per Juror:	\$44.80	K

*K=J/A*

In mid-2011, AOPC began utilizing the National Center for State Courts' Jury Managers' Toolbox for collecting jury data. In 2012, the counties began providing additional jury data which included information about the summoning practices in the counties. With this additional data, we can now see not only how many citizens come to our courthouses every day in anticipation of serving on a jury, but the number of citizens actually summonsed and the number of those summonsed who are exempt, excused or disqualified from service. With this wider view of the jury process, we can determine the efficiency with which our courts operate, and with the assistance of the Jury Managers' Toolbox find guidance in streamlining the jury summonsing practices.