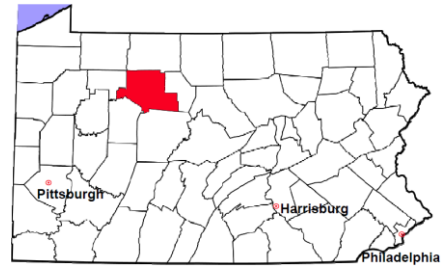


# Elk County

2012 Population Estimate: 31,550

Class of County: 6th

No. of Common Pleas Court Judgeships: 1  
(Elk and Cameron combined)



2012 Criminal	No. of Cases
---------------	--------------

Cases Pending 1/1/2012	138
New Cases Filed in 2012	423
Reopened Cases	11
<b>Cases Available for Disposition</b>	<b>572</b>

**Disposed by:**

Withdrawn/Dismissed	20	5.2%
ARD	78	20.4%
Guilty Plea	262	68.4%
Non-Jury Trial	3	0.8%
Jury Trial	10	2.6%
Inactive	3	0.8%
Other	7	1.8%
<b>Total Cases Disposed</b>	<b>383</b>	<b>100.0%</b>

<b>Cases Pending 12/31/2012</b>	<b>189</b>
Cases Awaiting Sentencing	10

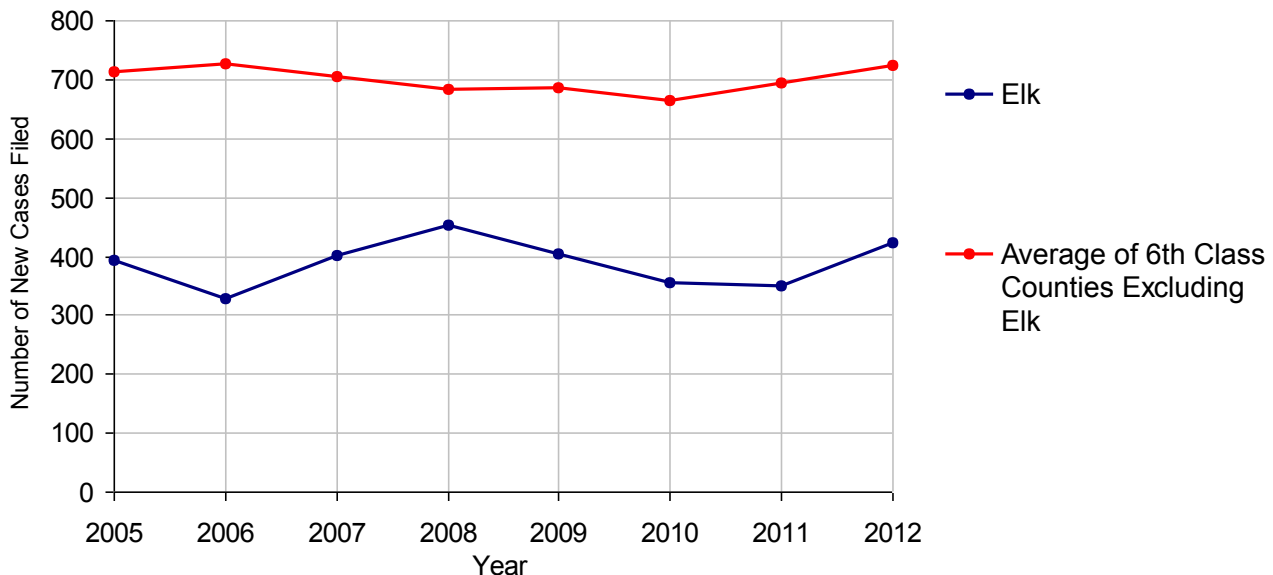
Data provided by CPCMS



**Age of Pending Cases as of 12/31/2012**

0-60 Days	64	33.9%
61-120 Days	49	25.9%
121-180 Days	34	18.0%
181-240 Days	18	9.5%
241-300 Days	8	4.2%
301-360 Days	8	4.2%
Over 360 Days	8	4.2%
<b>Total</b>	<b>189</b>	<b>100.0%</b>

**Criminal New Cases Filed, 2005-2012**

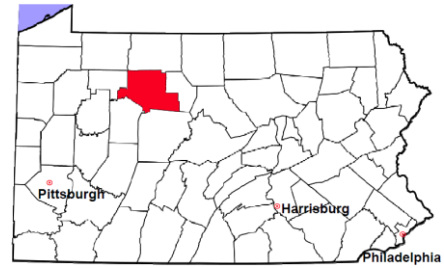


# Elk County

2012 Population Estimate: 31,550

Class of County: 6th

No. of Common Pleas Court Judgeships: 1  
(Elk and Cameron combined)



## 2012 Criminal - New Cases by Case Type

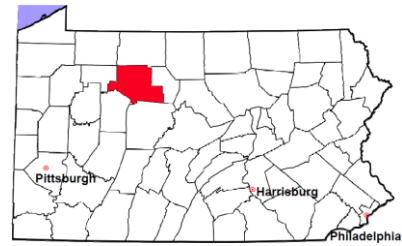


Case Type	Felony	Misdemeanor	Summary /Ungraded	Total
Person	22	40	0	62
Property	69	69	0	138
Drug	26	49	0	75
Weapon	3	3	0	6
Public Order	5	15	0	20
Motor Vehicle - DWI/DUI	0	114	1	115
Motor Vehicle - Other	1	5	1	7
Other	0	0	0	0
<b>Total</b>	<b>126</b>	<b>295</b>	<b>2</b>	<b>423</b>
	<b>29.8%</b>	<b>69.7%</b>	<b>0.5%</b>	<b>100.0%</b>

Data provided by CPCMS

# Elk County

2012 Population Estimate: 31,550  
 Class of County: 6th  
 No. of Common Pleas Court Judgeships: 1  
 (Elk and Cameron combined)



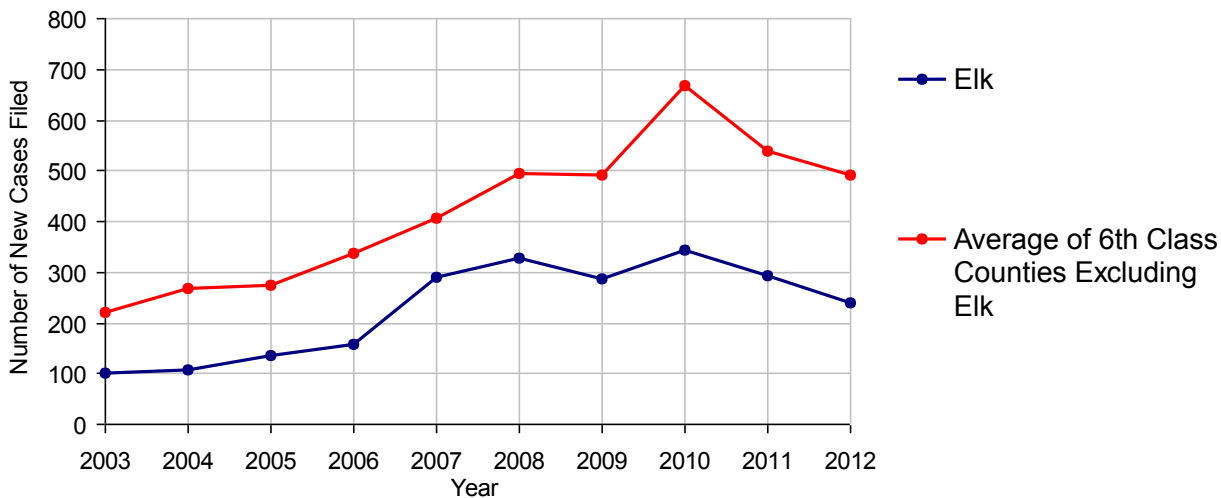
<b>2012 Civil</b>	<b>Civil Action</b>	<b>Other</b>	<b>Total</b>
Cases Pending 1/1/2012	194	175	369 (R)
Docketed Cases	121	117	238
Arbitration Appeals	0	0	0
Transferred In	0	0	0
Returned to Active	0	0	0
<b>Cases Available for Processing</b>	<b>315</b>	<b>292</b>	<b>607</b>
Disposed By:			
Default Judgments	44	33	77
Cases Decided by Arbitration Board	4	1	5
Dispositive Motions	4	2	6
Settlements	38	19	57
Moved to Inactive Status	0	0	0
Transferred/Withdrawn	6	2	8
Administrative Purge	0	0	0
Other	9	5	14
Jury Trial	1	0	1
Non-Jury Trial	0	1	1
<b>Total Cases Disposed</b>	<b>106</b>	<b>63</b>	<b>169</b>
<b>Cases Pending 12/31/2012</b>	<b>209</b>	<b>229</b>	<b>438</b>

### Age of Pending Cases as of 12/31/2012 (Civil Action Only)

0-6 months	48	23.0%
7-12 months	31	14.8%
13-18 months	23	11.0%
19-24 months	32	15.3%
25-30 months	23	11.0%
31-36 months	16	7.7%
37-42 months	11	5.3%
43-48 months	2	1.0%
49-54 months	8	3.8%
55-60 months	7	3.3%
61-66 months	2	1.0%
67-72 months	2	1.0%
Over 72 months	4	1.9%
<b>Total</b>	<b>209</b>	<b>100.0%</b>

(R) - Revised

Docketed Cases, 2003-2012



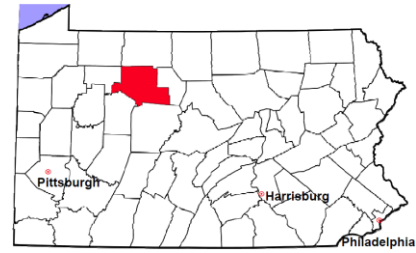
Note: Prior to June 2010, docketed cases under the "Other" category were not reported. The inclusion of these cases starting from June 2010 may contribute to an increase in docketed cases from 2009 to 2010.

# Elk County

2012 Population Estimate: 31,550

Class of County: 6th

No. of Common Pleas Court Judgeships: 1  
(Elk and Cameron combined)



## 2012 Civil - Docketed Cases Listed by Case Type

<b>TORT</b>	<b>20</b>	<b>8.4%</b>
<i>(does not include mass tort)</i>		
Intentional	1	
Malicious Prosecution	0	
Motor Vehicle	6	
Nuisance	0	
Premise Liability	4	
Product Liability	2	
Slander/Libel/Defamation	0	
Other	7	
<b>MASS TORT</b>	<b>0</b>	
Asbestos	0	
Tobacco	0	
Toxic Tort - DES	0	
Toxic Tort - Implant	0	
Toxic Waste	0	
Other	0	
<b>PROFESSIONAL LIABILITY</b>	<b>5</b>	<b>2.1%</b>
Dental	0	
Legal	0	
Medical Malpractice	5	
Other	0	
<b>CONTRACT</b>	<b>96</b>	<b>40.3%</b>
<i>(does not include judgments)</i>		
Buyer Plaintiff	2	
Debt Collection: Credit Card	58	
Debt Collection: Other	27	
Employment Dispute:		
Employment Dispute: Discriminatio	0	
Employment Dispute: Other	0	
Other	9	

<b>REAL PROPERTY</b>	<b>73</b>	<b>30.7%</b>
Ejectment*	7	
Eminent Domain/Condemnation	6	
Ground Rent	0	
Landlord/Tenant Dispute	0	
Mortgage Foreclosure:		
Residential*	39	
Commercial*	7	
Partition of Real Property*	3	
Quiet Title*	9	
Other*	2	
<b>CIVIL APPEALS</b>	<b>15</b>	<b>6.3%</b>
<i>- Administrative Agencies</i>		
Board of Assessment*	1	
Board of Elections*	0	
Dept. of Transportation*	8	
Zoning Board*	1	
Statutory Appeal - Other*	0	
Other*	5	
<b>MISCELLANEOUS</b>	<b>29</b>	<b>12.2%</b>
Common Law/		
Statutory Arbitration*	0	
Declaratory Judgment*	5	
Mandamus*	2	
Non-Domestic Relations		
Restraining Order*	0	
Quo Warranto*	0	
Replevin*	5	
Other*	17	
<b>TOTAL DOCKETED CASES:</b>	<b>238</b>	<b>100%</b>

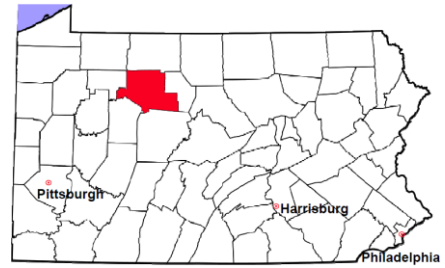
### Of the Docketed Cases:

Pro Se Filings: 0                      Class Action Suits: 1    0.4%                      MDJ Appeals: 5    2.1%

\* Civil Other

# Elk County

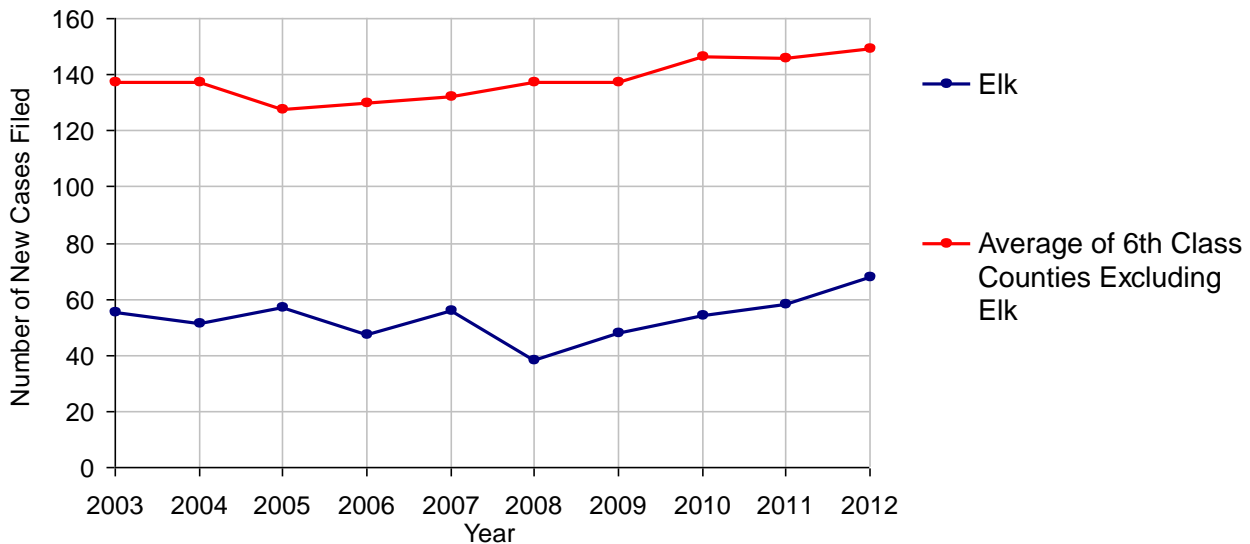
2012 Population Estimate: 31,550  
 Class of County: 6th  
 No. of Common Pleas Court Judgeships: 1  
 (Elk and Cameron combined)



## 2012 Protection From Abuse

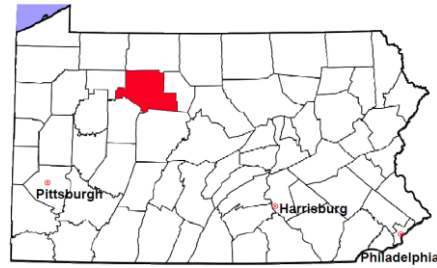
	No. of Petitions
Cases Pending 1/1/2012	4
New Cases Filed in 2012	68
<i>Of these, Petitions Requesting Temporary Orders: 68 (100.0%)</i>	
<i>Temporary Orders DENIED: 11 (16.2%), Temporary Orders GRANTED: 57 (83.8%)</i>	
<b>Cases Available for Processing</b>	<b>72</b>
Processed By:	
Temporary Order DENIED After Ex Parte Hearing and No Evidentiary Hearing Scheduled	11 16.7%
Temporary Order DISMISSED After Evidentiary Hearing and No Final Order Entered	0
Final Order DENIED After Evidentiary Hearing Before a Judge	7 10.6%
Final Order GRANTED After Evidentiary Hearing Before a Judge	14 21.2%
Plaintiff Did Not Appear For Evidentiary Hearing	3 4.5%
Final Order by STIPULATION OR AGREEMENT Between the Parties	12 18.2%
Petition WITHDRAWN by Plaintiff	18 27.3%
TRANSFERRED to Another Jurisdiction	0
DECEASED Party	1 1.5%
Other	0
<b>Cases Processed</b>	<b>66 100.0%</b>
<b>Cases Pending 12/31/2012</b>	<b>6</b>

**PFA New Cases Filed, 2003-2012**



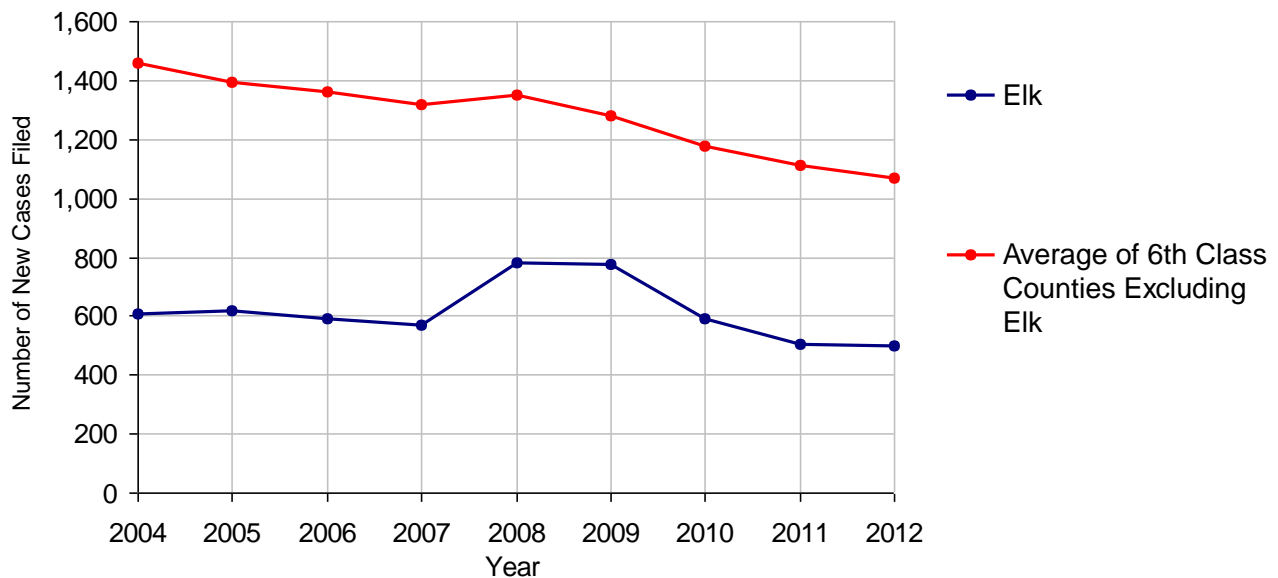
# Elk County

2012 Population Estimate: 31,550  
 Class of County: 6th  
 No. of Common Pleas Court Judgeships: 1  
 (Elk and Cameron combined)



<b>2012 Spousal &amp; Child Support</b>	<b>No. of Petitions</b>	
Cases Pending 1/1/2012	43	
New Cases Filed in 2012	500	
Dockets Transferred In (+)	4	
Dockets Transferred Out (-)	1	
<b>Cases Available for Processing</b>	<b>546</b>	
Processed By:		
Judge	3	0.6%
Intake Officer	430	87.4%
Hearing Officer	58	11.8%
Other	1	0.2%
<b>Cases Processed</b>	<b>492</b>	<b>100.0%</b>
<b>Cases Pending 12/31/2012</b>	<b>54</b>	

**Spousal & Child Support New Cases Filed, 2004-2012**

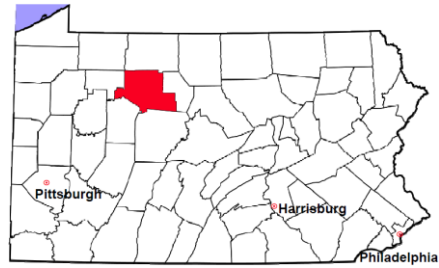


# Elk County

2012 Population Estimate: 31,550

Class of County: 6th

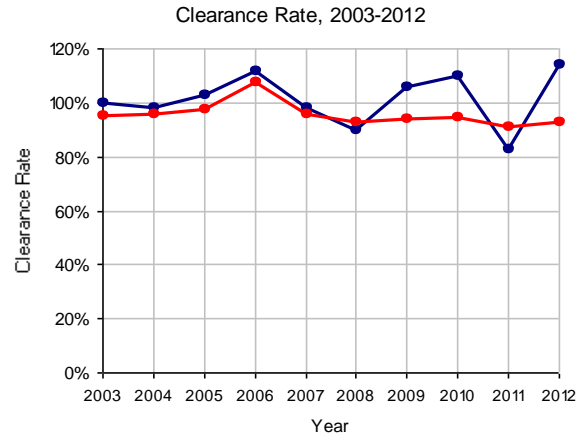
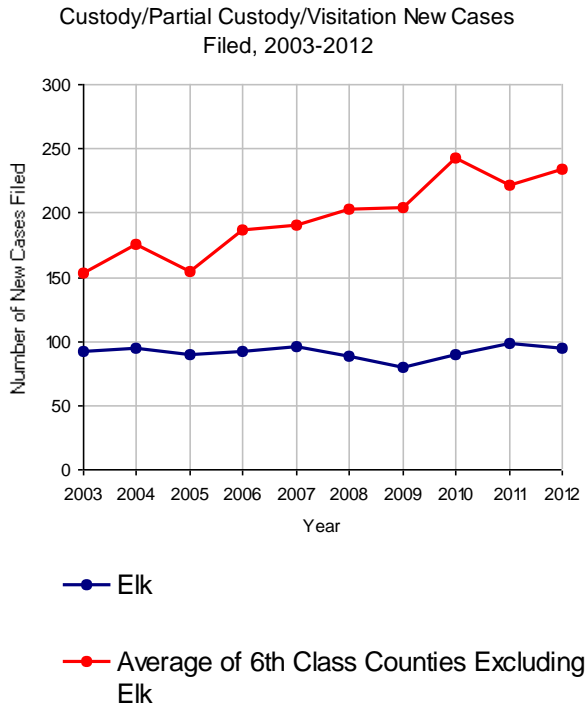
No. of Common Pleas Court Judgeships: 1  
(Elk and Cameron combined)



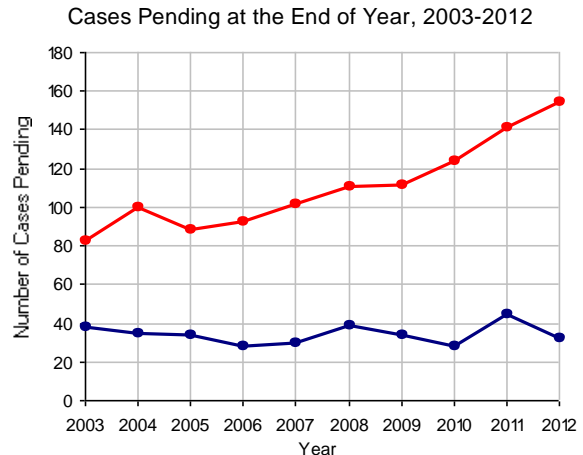
## 2012 Custody/Partial Custody/Visitation

No. of  
Petitions

Cases Pending 1/1/2012	45
New Cases Filed in 2012	94
<b>Cases Available for Processing</b>	<b>139</b>
Processed By:	
Judge	17 15.9%
Non-Judicial Officer	70 65.4%
Other	20 18.7%
<b>Cases Processed</b>	<b>107 100.0%</b>
<b>Cases Pending 12/31/2012</b>	<b>32</b>

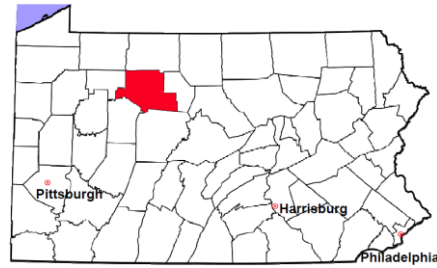


Note: Clearance Rate = Cases Processed / New Cases Filed



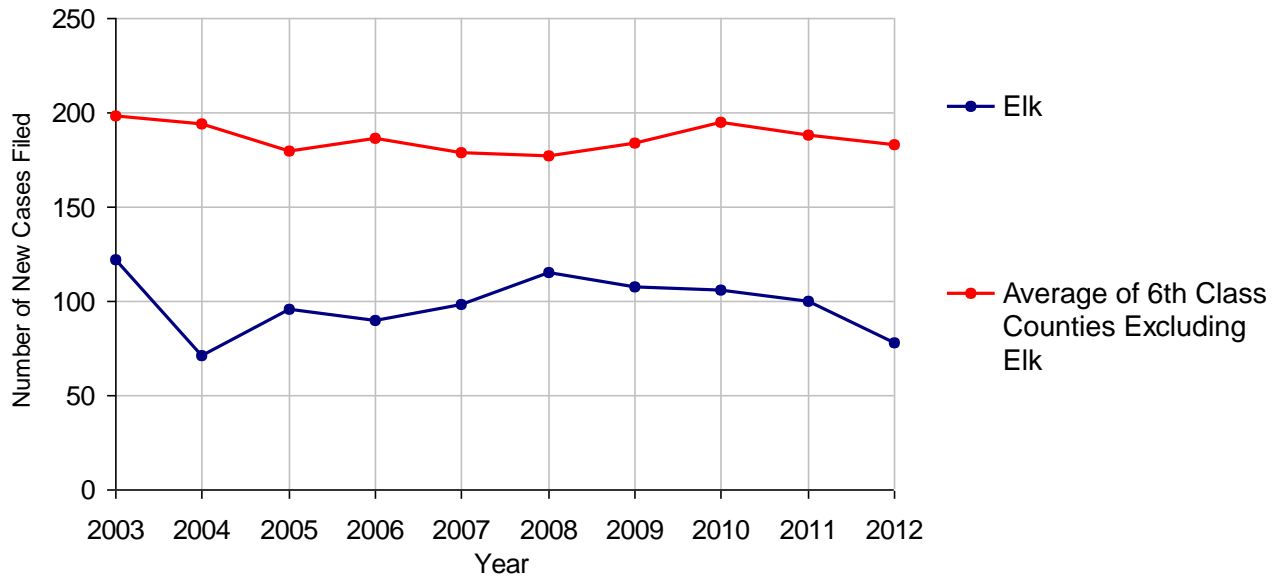
# Elk County

2012 Population Estimate: 31,550  
 Class of County: 6th  
 No. of Common Pleas Court Judgeships: 1  
 (Elk and Cameron combined)



<b>2012 Divorce</b>	<b>No. of Petitions</b>	
Cases Pending 1/1/2012	176	
New Cases Filed in 2012	78	
<b>Cases Available for Processing</b>	<b>254</b>	
Processed By:		
Contested Before a Judge	0	
Contested Before a Master	0	
Uncontested	70	76.9%
Other	21	23.1%
<b>Cases Processed</b>	<b>91</b>	<b>100.0%</b>
<b>Cases Pending 12/31/2012</b>	<b>163</b>	

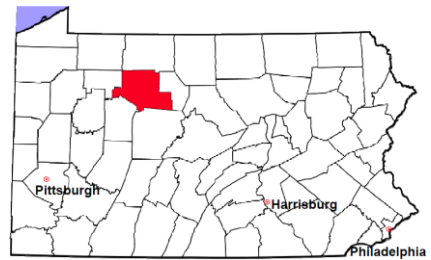
**Divorce New Cases Filed, 2003-2012**





# Elk County

2012 Population Estimate: 31,550  
 Class of County: 6th  
 No. of Common Pleas Court Judgeships: 1  
 (Elk and Cameron combined)



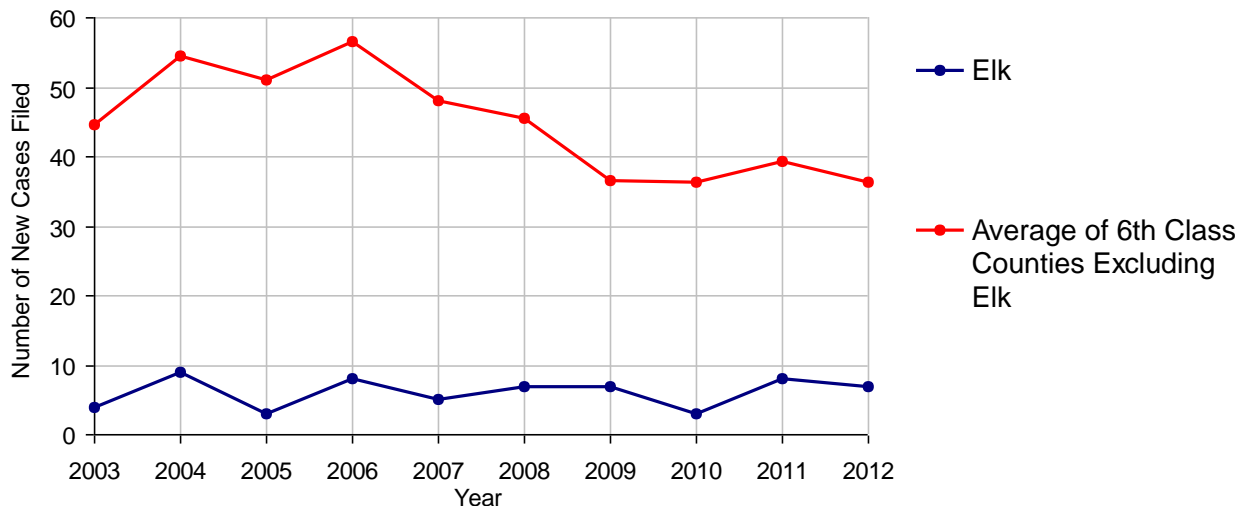
## 2012 Juvenile Dependency - Active Dependent Inventory



	Abuse/ Neglect	Status Offenses	Total
Cases Pending 1/1/2012	1	1	2
New Petitions Filed in 2012	7	0	7
Other	2	0	2
<b>Total Petitions Available for Processing</b>	<b>10</b>	<b>1</b>	<b>11</b>
Processed by:			
Adjudicated Dependent			
Judge	7	1	8
Master	0	0	0
Adjudicated NOT Dependent			
Judge	0	0	0
Master	0	0	0
Withdrawn/Dismissed/Inactive	0	0	0
Other	1	0	1
<b>Total Petitions Processed</b>	<b>8</b>	<b>1</b>	<b>9</b>
<b>Cases Pending 12/31/2012</b>	<b>2</b>	<b>0</b>	<b>2</b>

Data provided by CPCMS

Abuse/Neglect and Status Offenses New Cases Filed, 2003-2012



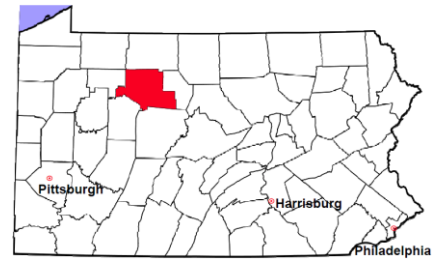
Note: Dependency data for 2002-2010 were collected manually. Dependency data for 2011 and 2012 were provided by CPCMS.

# Elk County

2012 Population Estimate: 31,550

Class of County: 6th

No. of Common Pleas Court Judgeships: 1  
(Elk and Cameron combined)



## 2012 Juvenile Dependency - Adjudicated Dependent Inventory



	Abuse/ Neglect	Status Offenses	Total
Cases Pending 1/1/2012	4	5	9
New Adjudicated Dependent Cases	7	1	8
Other	1	0	1
<b>Total Adjudicated Dependent Cases</b>	<b>12</b>	<b>6</b>	<b>18</b>
<b><u>Court Supervision Terminated:</u></b>			
Family Reunification	0	0	0
Adoption	0	0	0
Placement with a Relative/Guardian	0	0	0
Aged Out	0	0	0
Other Permanency Outcomes*	0	0	0
Other**	2	0	2
<b>Total Adjudicated Dependent Cases Terminated</b>	<b>2 100.0%</b>	<b>0 100.0%</b>	<b>2 100.0%</b>
<b>Cases Pending 12/31/2012</b>	<b>10</b>	<b>6</b>	<b>16</b>

Data provided by CPCMS

\* Other Permanency Outcomes include: adjudicated delinquent, death due to natural causes, death due to negligence, emancipation, permanent living arrangement, and parent has come forward.

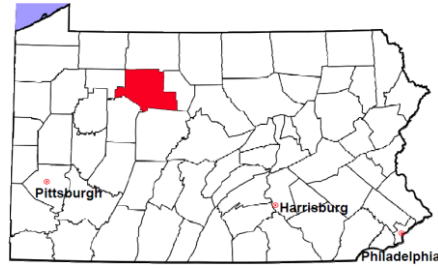
\*\* Other includes cases where court supervision is terminated due to transfer out of jurisdiction, withdrawal and administrative closure.

# Elk County

2012 Population Estimate: 31,550

Class of County: 6th

No. of Common Pleas Court Judgeships: 1  
(Elk and Cameron combined)



## 2012 Juvenile Delinquency

**No. of Cases**

Cases Pending 1/1/2012 15

New Cases Filed in 2012 104

**Cases Available for Processing 119**

Processed By:

Judge 39 38.2%

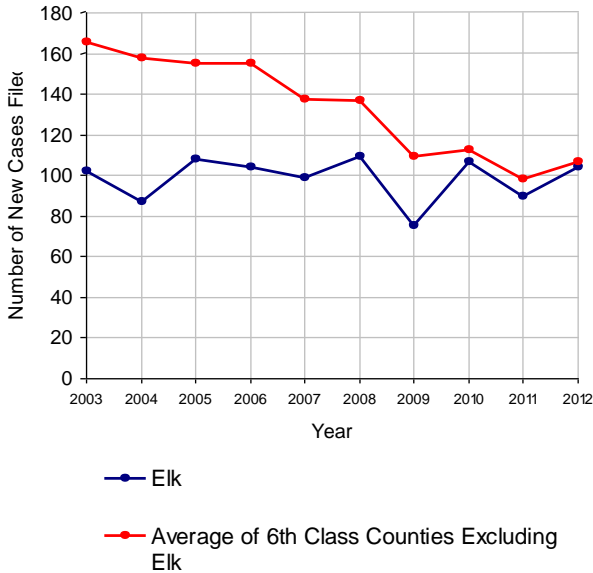
Non-Judicial Officer 57 55.9%

Other 6 5.9%

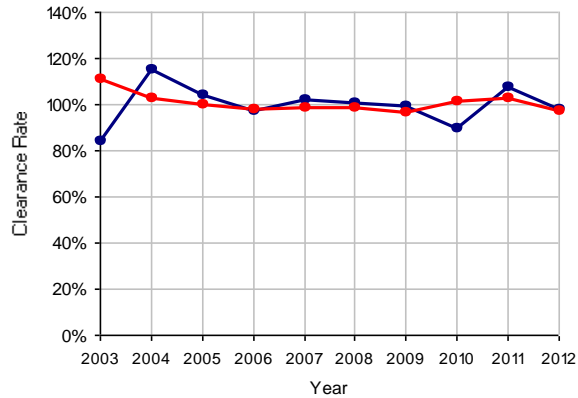
**Cases Processed 102 100.0%**

**Cases Pending 12/31/2012 17**

Juvenile Delinquency New Cases Filed, 2003-2012

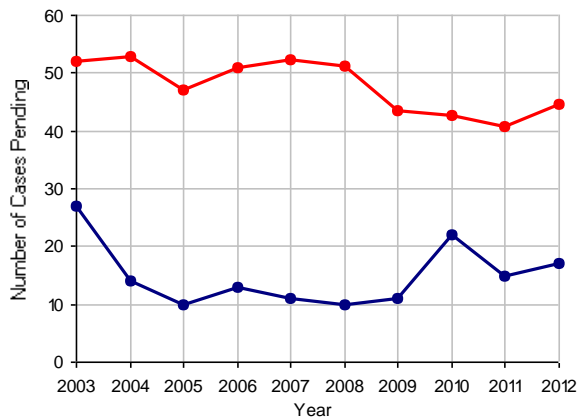


Clearance Rate, 2003-2012



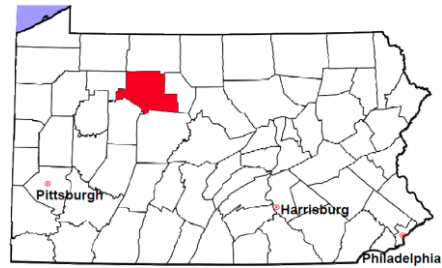
Note: Clearance Rate = Cases Processed / New Cases Filed

Cases Pending at the End of Year, 2003-2012



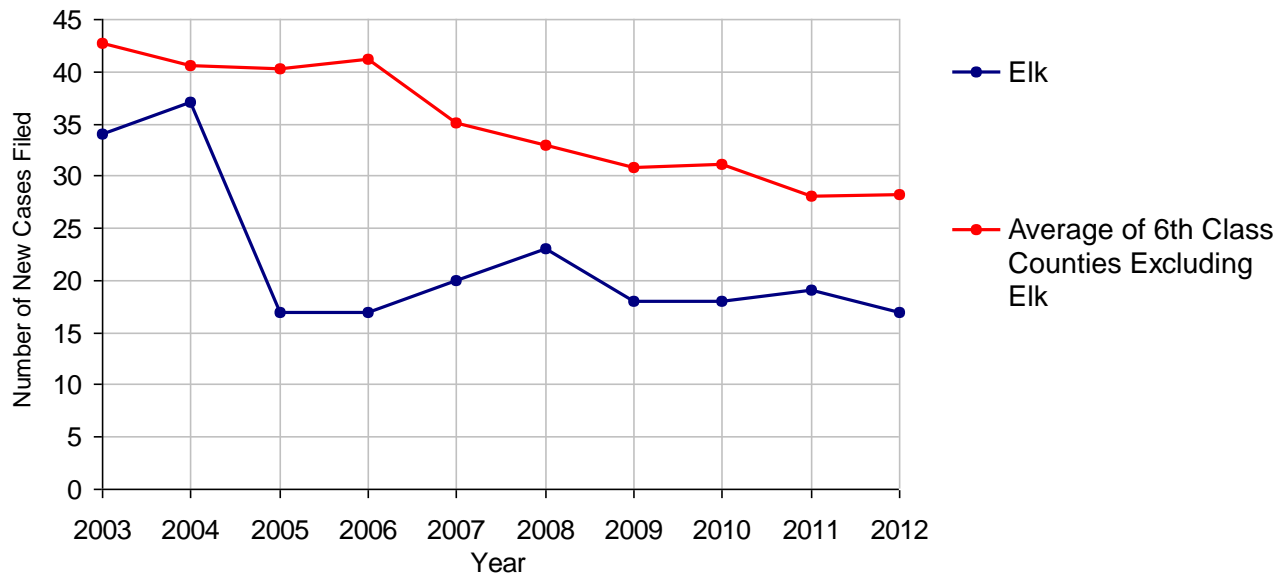
# Elk County

2012 Population Estimate: 31,550  
 Class of County: 6th  
 No. of Common Pleas Court Judgeships: 1  
 (Elk and Cameron combined)



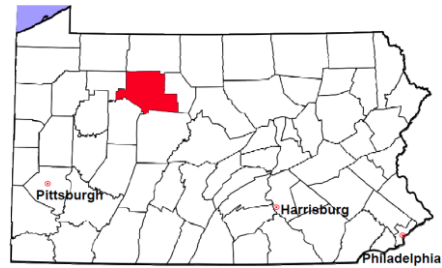
<b>2012 Accounts</b>	<b>No. of Cases</b>	
Cases Pending 1/1/2012	9	
New Cases Filed in 2012	17	
<b>Cases Available for Processing</b>	<b>26</b>	
Processed By:		
Contested before a Judge	0	
Contested before a Non-judicial Officer	0	
Uncontested	20	90.9%
Other	2	9.1%
<b>Cases Processed</b>	<b>22</b>	<b>100.0%</b>
<b>Cases Pending 12/31/2012</b>	<b>4</b>	

**Accounts New Cases Filed, 2003-2012**



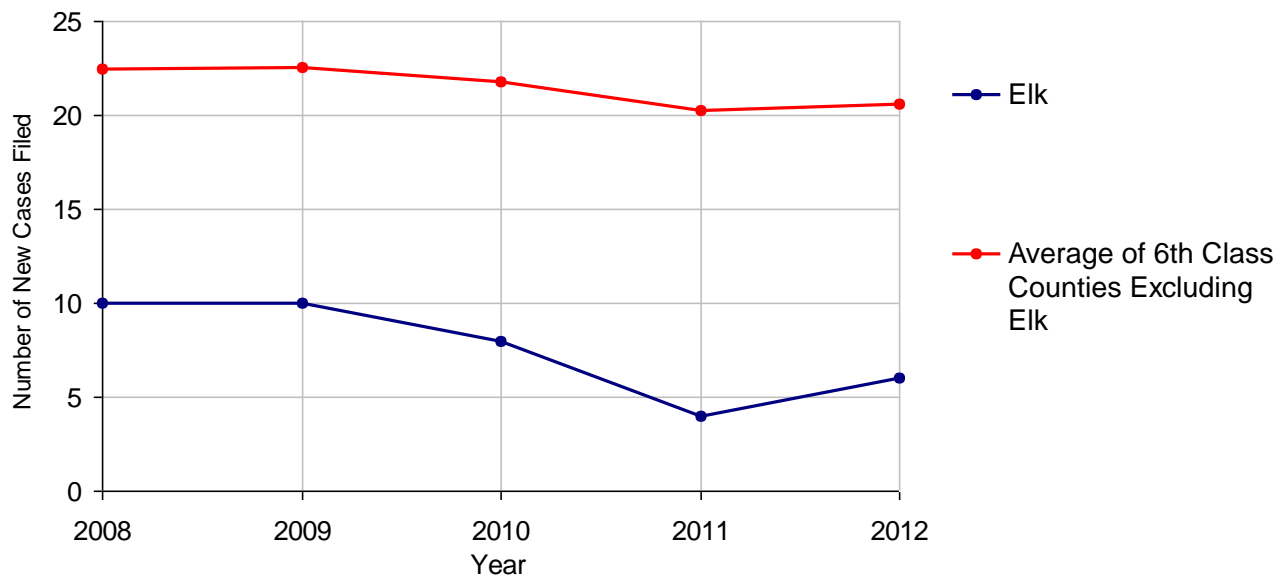
# Elk County

2012 Population Estimate: 31,550  
 Class of County: 6th  
 No. of Common Pleas Court Judgeships: 1  
 (Elk and Cameron combined)



<b>2012 Adoptions</b>		<b>No. of Cases</b>	
Cases Pending 1/1/2012		3	
New Cases Filed in 2012		6	
<b>Cases Available for Processing</b>		<b>9</b>	
Processed By:			
Contested before a Judge	Granted	0	
	Denied	0	
Uncontested	Granted	8	88.9%
	Denied	0	
Other		1	11.1%
<b>Cases Processed</b>		<b>9</b>	<b>100.0%</b>
<b>Cases Pending 12/31/2012</b>		<b>0</b>	

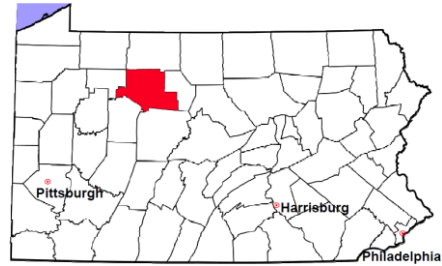
**Adoptions New Cases Filed, 2008-2012**



Note: Prior to 2008, each petition was counted as one new case, regardless of the number of children listed on the petition. Starting in 2008, each child listed on a petition is counted as a separate case. Therefore, statistics since 2008 should not be compared to statistics prior to 2008.

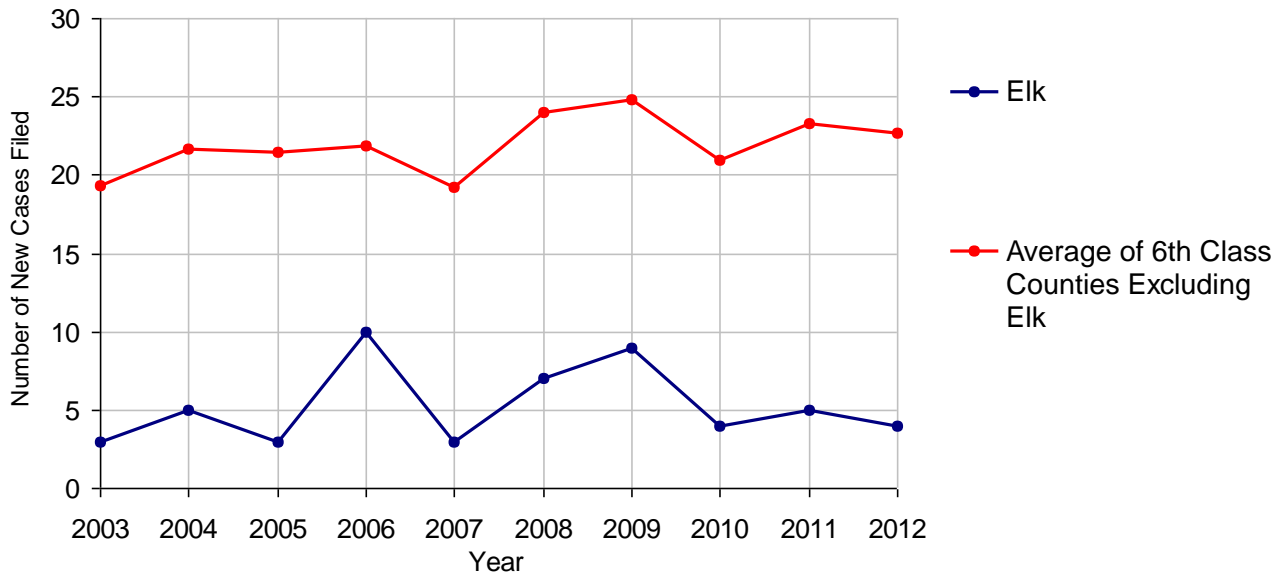
# Elk County

2012 Population Estimate: 31,550  
 Class of County: 6th  
 No. of Common Pleas Court Judgeships: 1  
 (Elk and Cameron combined)



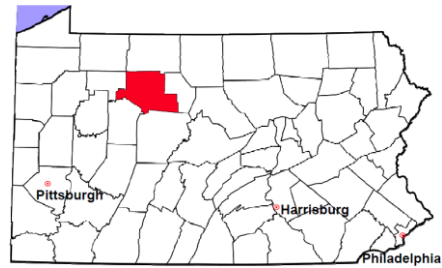
2012 Relinquishments/Terminations	No. of Cases	
Cases Pending 1/1/2012	5	
New Cases Filed in 2012	4	
<b>Cases Available for Processing</b>	<b>9</b>	
Processed By:		
Contested before a Judge	0	
Uncontested	2	66.7%
Other	1	33.3%
<b>Cases Processed</b>	<b>3</b>	<b>100.0%</b>
<b>Cases Pending 12/31/2012</b>	<b>6</b>	

**Relinquishments/Terminations New Cases Filed, 2003-2012**



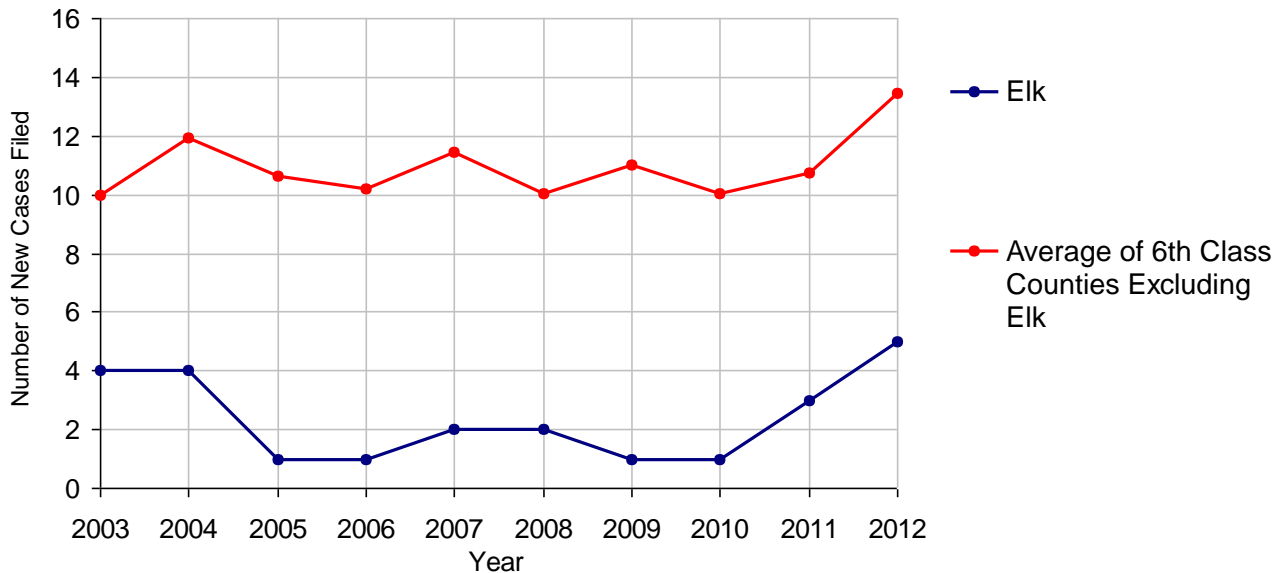
# Elk County

2012 Population Estimate: 31,550  
 Class of County: 6th  
 No. of Common Pleas Court Judgeships: 1  
 (Elk and Cameron combined)



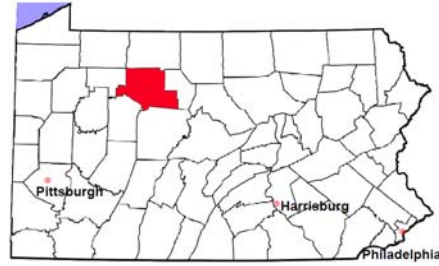
<b>2012 Appointment of Guardians</b>		<b>No. of Cases</b>
Cases Pending 1/1/2012		1
New Cases Filed in 2012		5
<b>Cases Available for Processing</b>		<b>6</b>
Processed By:		
Contested before a Judge		0
Uncontested	1	100.0%
Other		0
<b>Cases Processed</b>	<b>1</b>	<b>100.0%</b>
<b>Cases Pending 12/31/2012</b>		<b>5</b>

**Appointment of Guardians New Cases Filed, 2003-2012**



# Elk County

2012 Population Estimate: 31,550  
 Class of County: 6th  
 No. of Common Pleas Court Judgeships: 1  
 (Elk and Cameron combined)



## 2012 Jury Yield and Utilization

### Jury Yield

Qualification Questionnaires/Summonses Mailed:	1,650	A		
Returned Undeliverable:	227	B	13.8%	Of Qualification Questionnaires/ Summonses Mailed
Not Responded to:	15	C	0.9%	
the Number of Prospective Jurors:				
Disqualified:	82	D	5.0%	
Exempted:	59	E	3.6%	
Excused:	132	F	8.0%	
Deferred to New Term:	470	G	28.5%	
Deferred from Previous Term:	0	H		
<b>Total Number of Qualified Jurors Available for Service:</b>	<b>665</b>	<b>I</b>	<b>40.3%</b>	

$I = A - B - C - D - E - F - G + H$

### Jury Utilization

the Number of Jurors:			
Reporting for Service:	515	77.4%	Of Jurors Qualified and Available
Told Not to Report for Service:	180	27.1%	
Sent to Courtroom for Jury Selection (Voir Dire):	556	108.0%	Of Jurors Reporting for Service
Impanelled or Sworn (jurors/alternates):	196	38.1%	
Removed for Cause/Hardship:	93		
Removed by Peremptory Challenge:	202		

### Jury Costs

Total Annual Budget for Juror Operations:	\$13,350.00	J
Average Cost Per Juror:	\$8.09	K

$K = J/A$

In mid-2011, AOPC began utilizing the National Center for State Courts' Jury Managers' Toolbox for collecting jury data. In 2012, the counties began providing additional jury data which included information about the summoning practices in the counties. With this additional data, we can now see not only how many citizens come to our courthouses every day in anticipation of serving on a jury, but the number of citizens actually summonsed and the number of those summonsed who are exempt, excused or disqualified from service. With this wider view of the jury process, we can determine the efficiency with which our courts operate, and with the assistance of the Jury Managers' Toolbox find guidance in streamlining the jury summonsing practices.