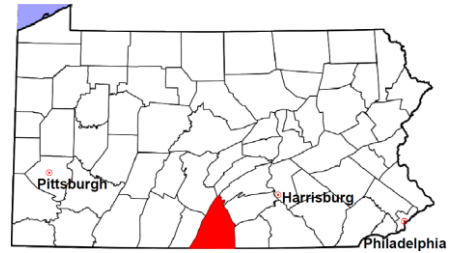


Franklin County

2012 Population Estimate: 151,275
 Class of County: 4th
 No. of Common Pleas Court Judgeships: 5
 (Franklin and Fulton combined)



2012 Criminal	No. of Cases
----------------------	---------------------

Cases Pending 1/1/2012	754
New Cases Filed in 2012	2,405
Reopened Cases	126
Cases Available for Disposition	3,285

Disposed by:		
Withdrawn/Dismissed	221	8.7%
ARD	429	16.8%
Guilty Plea	1,718	67.3%
Non-Jury Trial	21	0.8%
Jury Trial	60	2.4%
Inactive	58	2.3%
Other	45	1.8%
Total Cases Disposed	2,552	100.0%

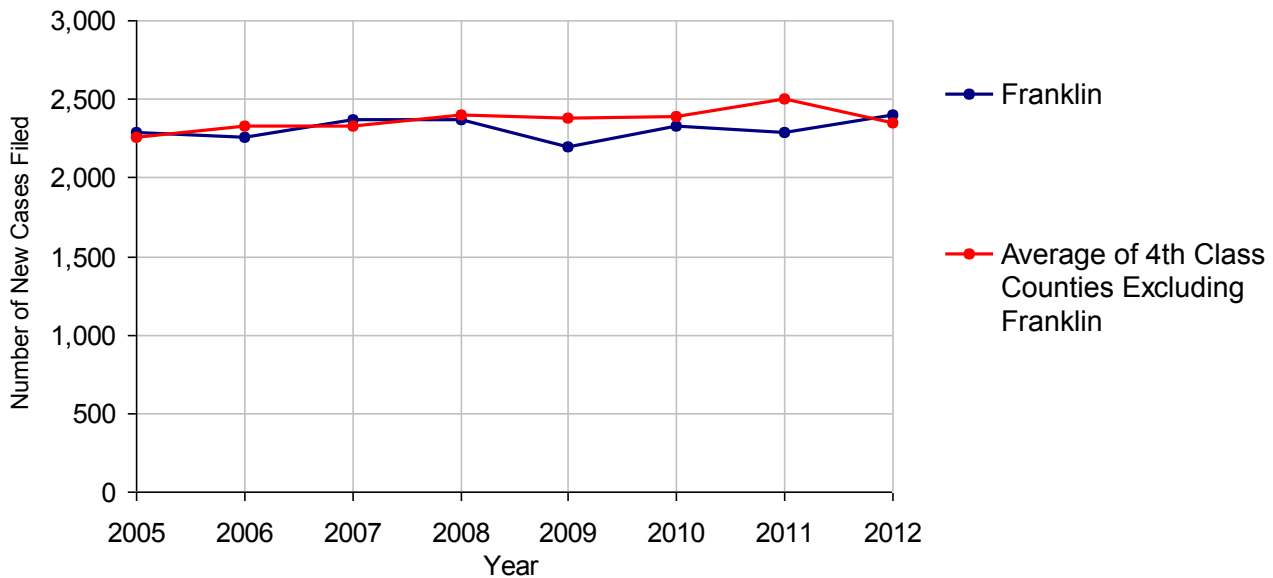
Cases Pending 12/31/2012	733
Cases Awaiting Sentencing	220

Data provided by CPCMS



Age of Pending Cases as of 12/31/2012		
0-60 Days	300	40.9%
61-120 Days	121	16.5%
121-180 Days	77	10.5%
181-240 Days	63	8.6%
241-300 Days	32	4.4%
301-360 Days	24	3.3%
Over 360 Days	116	15.8%
Total	733	100.0%

Criminal New Cases Filed, 2005-2012

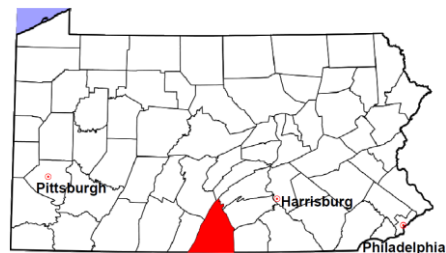


Franklin County

2012 Population Estimate: 151,275

Class of County: 4th

No. of Common Pleas Court Judgeships: 5
(Franklin and Fulton combined)



2012 Criminal - New Cases by Case Type

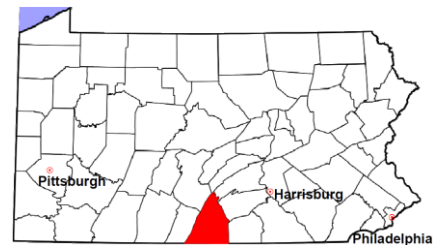


Case Type	Felony	Misdemeanor	Summary /Ungraded	Total
Person	143	188	0	331
Property	303	395	1	699
Drug	151	216	0	367
Weapon	14	9	0	23
Public Order	39	125	0	164
Motor Vehicle - DWI/DUI	0	809	0	809
Motor Vehicle - Other	1	9	0	10
Other	2	0	0	2
Total	653	1,751	1	2,405
	27.2%	72.8%	<0.1%	100.0%

Data provided by CPCMS

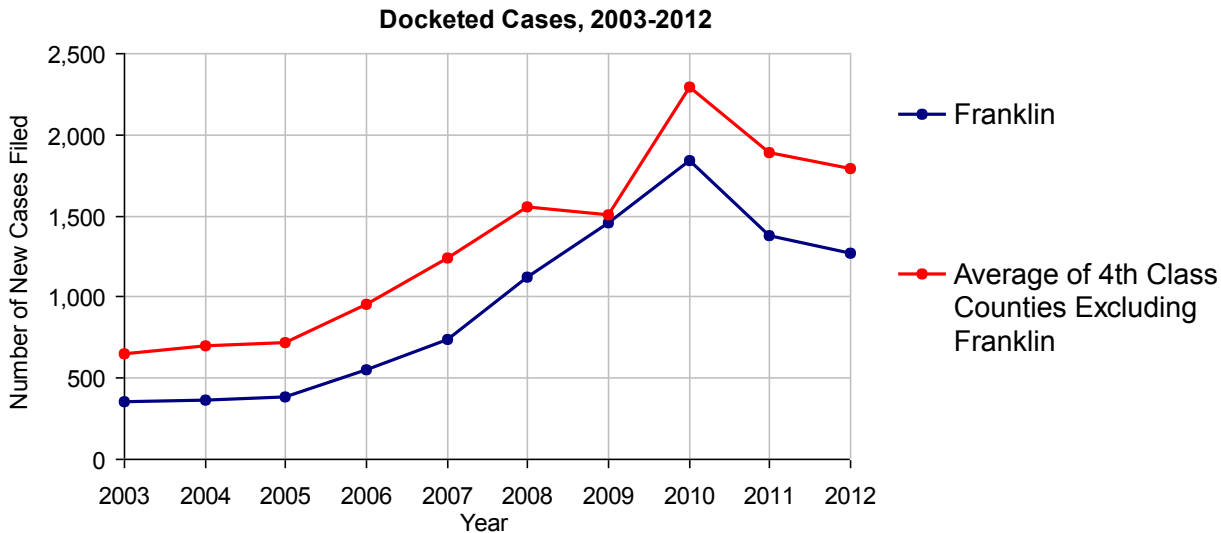
Franklin County

2012 Population Estimate: 151,275
 Class of County: 4th
 No. of Common Pleas Court Judgeships: 5
 (Franklin and Fulton combined)



2012 Civil	Civil Action	Other	Total
Cases Pending 1/1/2012	956	781	1,737
Docketed Cases	599	675	1,274
Arbitration Appeals	0	0	0
Transferred In	0	0	0
Returned to Active	0	0	0
Cases Available for Processing	1,555	1,456	3,011
Disposed By:			
Default Judgments	0	1	1
Cases Decided by Arbitration Board	38	0	38
Dispositive Motions	0	0	0
Settlements	200	215	415
Moved to Inactive Status	0	1	1
Transferred/Withdrawn	9	4	13
Administrative Purge	0	0	0
Other	0	2	2
Jury Trial	6	0	6
Non-Jury Trial	0	0	0
Total Cases Disposed	253	223	476
Cases Pending 12/31/2012	1,302	1,233	2,535

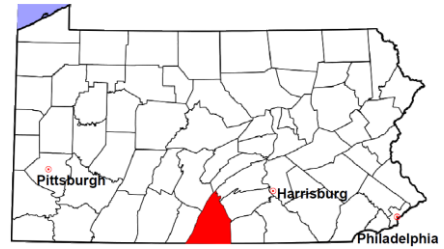
Age of Pending Cases as of 12/31/2012 (Civil Action Only)		
0-6 months	239	18.4%
7-12 months	328	25.2%
13-18 months	266	20.4%
19-24 months	335	25.7%
25-30 months	134	10.3%
31-36 months	0	
37-42 months	0	
43-48 months	0	
49-54 months	0	
55-60 months	0	
61-66 months	0	
67-72 months	0	
Over 72 months	0	
Total	1,302	100.0%



Note: Prior to June 2010, docketed cases under the "Other" category were not reported. The inclusion of these cases starting from June 2010 may contribute to an increase in docketed cases from 2009 to 2010.

Franklin County

2012 Population Estimate: 151,275
 Class of County: 4th
 No. of Common Pleas Court Judgeships: 5
 (Franklin and Fulton combined)



2012 Civil - Docketed Cases Listed by Case Type

TORT	131	10.3%
<i>(does not include mass tort)</i>		
Intentional	3	
Malicious Prosecution	0	
Motor Vehicle	89	
Nuisance	0	
Premise Liability	17	
Product Liability	2	
Slander/Libel/Defamation	1	
Other	19	
MASS TORT	0	
Asbestos	0	
Tobacco	0	
Toxic Tort - DES	0	
Toxic Tort - Implant	0	
Toxic Waste	0	
Other	0	
PROFESSIONAL LIABILITY	8	0.6%
Dental	0	
Legal	0	
Medical Malpractice	7	
Other	1	
CONTRACT	448	35.2%
<i>(does not include judgments)</i>		
Buyer Plaintiff	2	
Debt Collection: Credit Card	232	
Debt Collection: Other	180	
Employment Dispute:		
Employment Dispute: Discriminatio	0	
Employment Dispute: Other	5	
Other	29	

REAL PROPERTY	548	43.0%
Ejectment*	32	
Eminent Domain/Condemnation	2	
Ground Rent	1	
Landlord/Tenant Dispute	11	
Mortgage Forclosures:		
Residential*	437	
Commercial*	38	
Partition of Real Property*	3	
Quiet Title*	14	
Other*	10	
CIVIL APPEALS	64	5.0%
<i>- Administrative Agencies</i>		
Board of Assessment*	0	
Board of Elections*	15	
Dept. of Transportation*	30	
Zoning Board*	1	
Statutory Appeal - Other*	10	
Other*	8	
MISCELLANEOUS	75	5.9%
Common Law/		
Statutory Arbitration*	0	
Declaratory Judgment*	2	
Mandamus*	0	
Non-Domestic Relations		
Restraining Order*	0	
Quo Warranto*	0	
Replevin*	6	
Other*	67	
TOTAL DOCKETED CASES:	1,274	100%

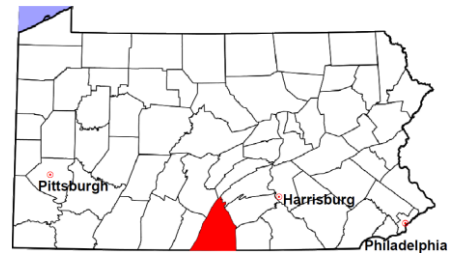
Of the Docketed Cases:

Pro Se Filings: 28 2.2% Class Action Suits: 3 0.2% MDJ Appeals: 30 2.4%

* Civil Other

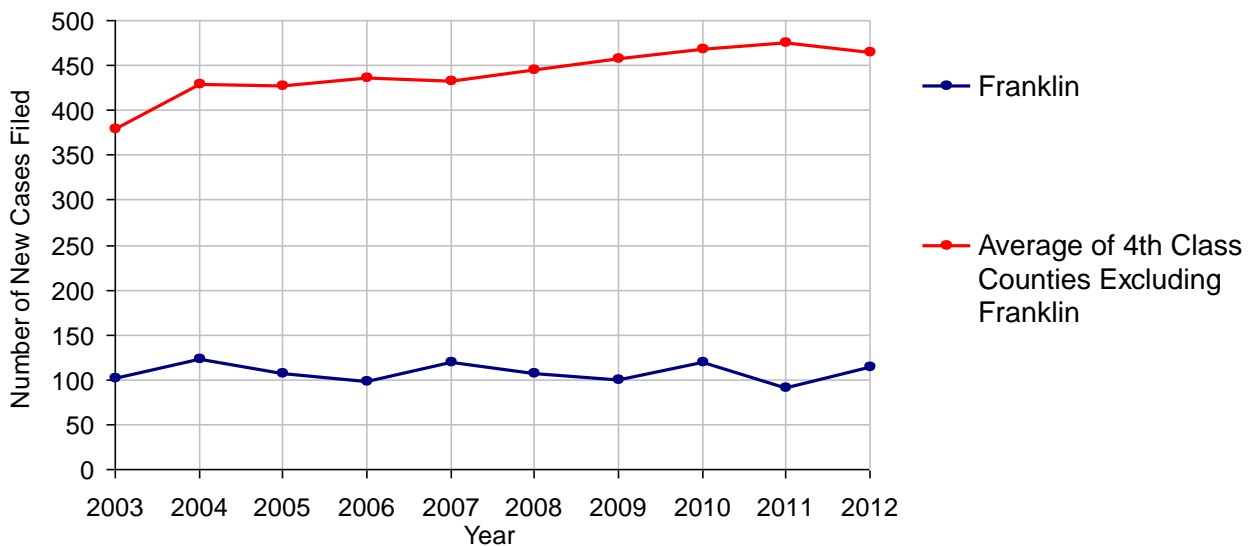
Franklin County

2012 Population Estimate: 151,275
 Class of County: 4th
 No. of Common Pleas Court Judgeships: 5
 (Franklin and Fulton combined)



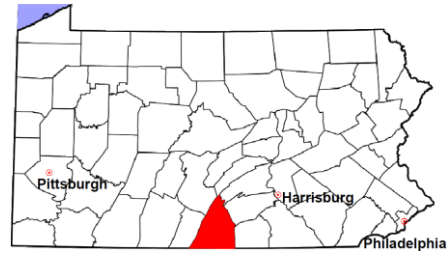
2012 Protection From Abuse	No. of Petitions
Cases Pending 1/1/2012	200
New Cases Filed in 2012	114
<i>Of these, Petitions Requesting Temporary Orders: 114 (100.0%)</i>	
<i>Temporary Orders DENIED: 0 (0.0%), Temporary Orders GRANTED: 114 (100.0%)</i>	
Cases Available for Processing	314
Processed By:	
Temporary Order DENIED After Ex Parte Hearing and No Evidentiary Hearing Scheduled	0
Temporary Order DISMISSED After Evidentiary Hearing and No Final Order Entered	3 3.2%
Final Order DENIED After Evidentiary Hearing Before a Judge	0
Final Order GRANTED After Evidentiary Hearing Before a Judge	14 14.9%
Plaintiff Did Not Appear For Evidentiary Hearing	0
Final Order by STIPULATION OR AGREEMENT Between the Parties	68 72.3%
Petition WITHDRAWN by Plaintiff	6 6.4%
TRANSFERRED to Another Jurisdiction	0
DECEASED Party	0
Other	3 3.2%
Cases Processed	94 100.0%
Cases Pending 12/31/2012	220

PFA New Cases Filed, 2003-2012



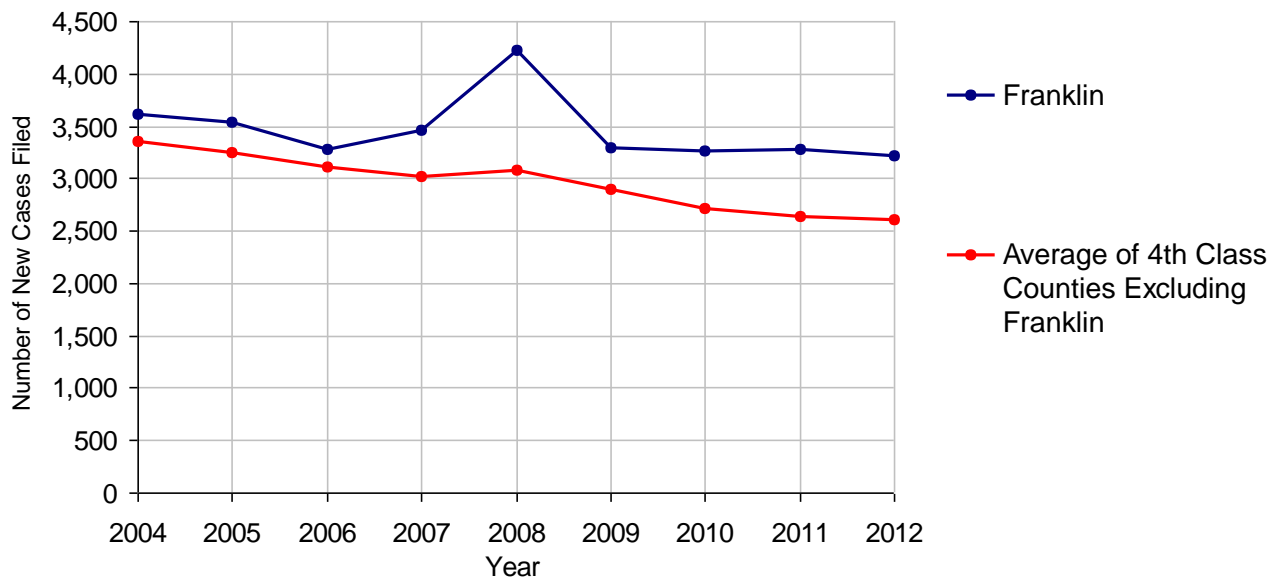
Franklin County

2012 Population Estimate: 151,275
 Class of County: 4th
 No. of Common Pleas Court Judgeships: 5
 (Franklin and Fulton combined)



2012 Spousal & Child Support	No. of Petitions	
Cases Pending 1/1/2012	599	
New Cases Filed in 2012	3,218	
Dockets Transferred In (+)	33	
Dockets Transferred Out (-)	30	
Cases Available for Processing	3,820	
Processed By:		
Judge	42	1.3%
Intake Officer	3,256	98.6%
Hearing Officer	5	0.2%
Other	0	
Cases Processed	3,303	100.0%
Cases Pending 12/31/2012	517	

Spousal & Child Support New Cases Filed, 2004-2012

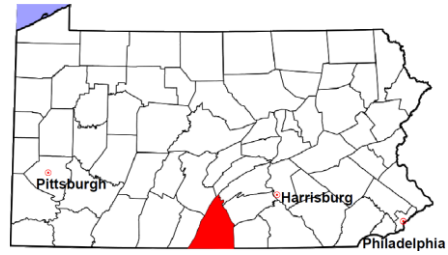


Franklin County

2012 Population Estimate: 151,275

Class of County: 4th

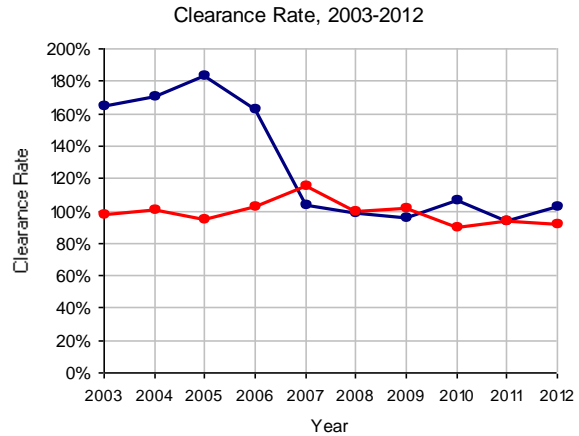
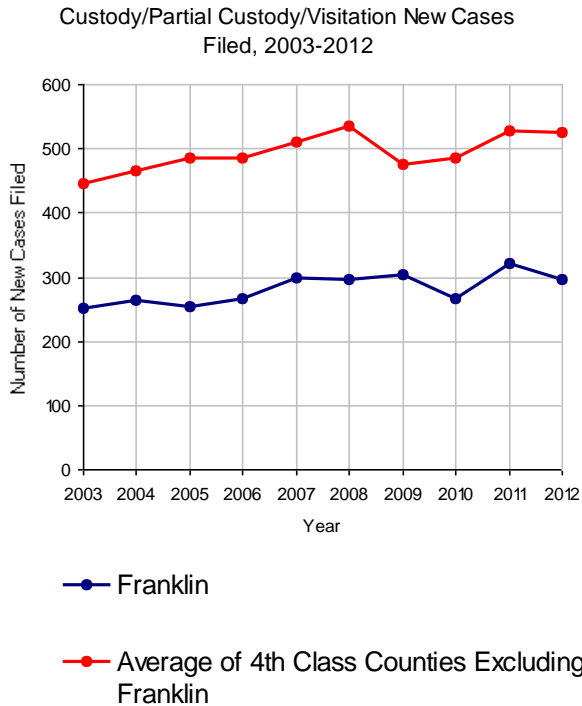
No. of Common Pleas Court Judgeships: 5
(Franklin and Fulton combined)



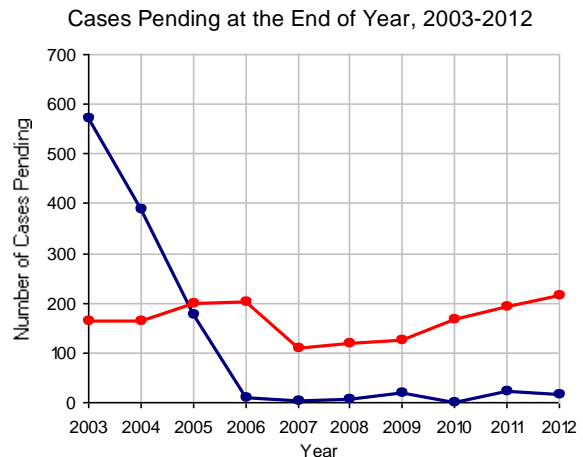
2012 Custody/Partial Custody/Visitation

No. of
Petitions

Cases Pending 1/1/2012	23	
New Cases Filed in 2012	296	
Cases Available for Processing	319	
Processed By:		
Judge	0	
Non-Judicial Officer	295	97.0%
Other	9	3.0%
Cases Processed	304	100.0%
Cases Pending 12/31/2012	15	

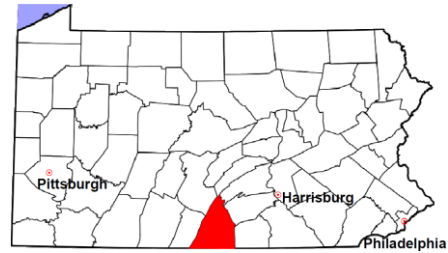


Note: Clearance Rate = Cases Processed / New Cases Filed



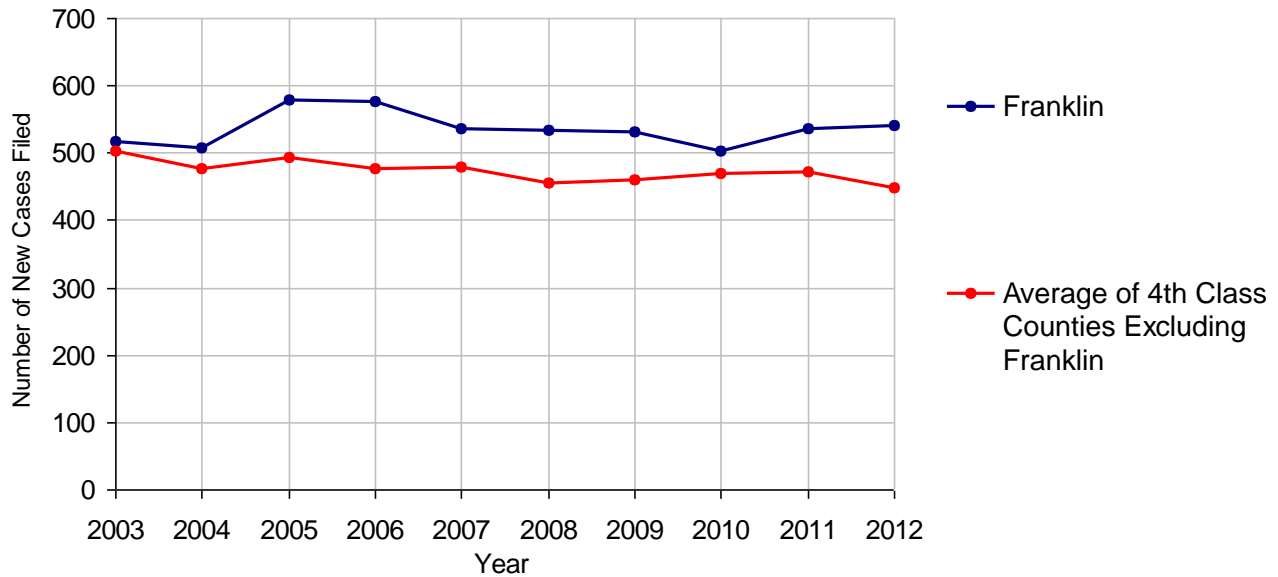
Franklin County

2012 Population Estimate: 151,275
 Class of County: 4th
 No. of Common Pleas Court Judgeships: 5
 (Franklin and Fulton combined)



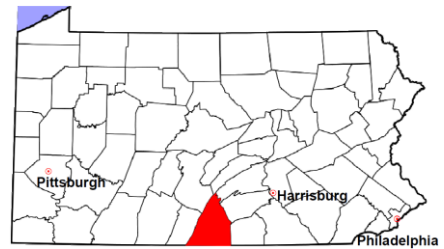
2012 Divorce	No. of Petitions	
Cases Pending 1/1/2012	654	
New Cases Filed in 2012	542	
Cases Available for Processing	1,196	
Processed By:		
Contested Before a Judge	0	
Contested Before a Master	11	2.1%
Uncontested	469	87.8%
Other	54	10.1%
Cases Processed	534	100.0%
Cases Pending 12/31/2012	662	

Divorce New Cases Filed, 2003-2012



Franklin County

2012 Population Estimate: 151,275
 Class of County: 4th
 No. of Common Pleas Court Judgeships: 5
 (Franklin and Fulton combined)

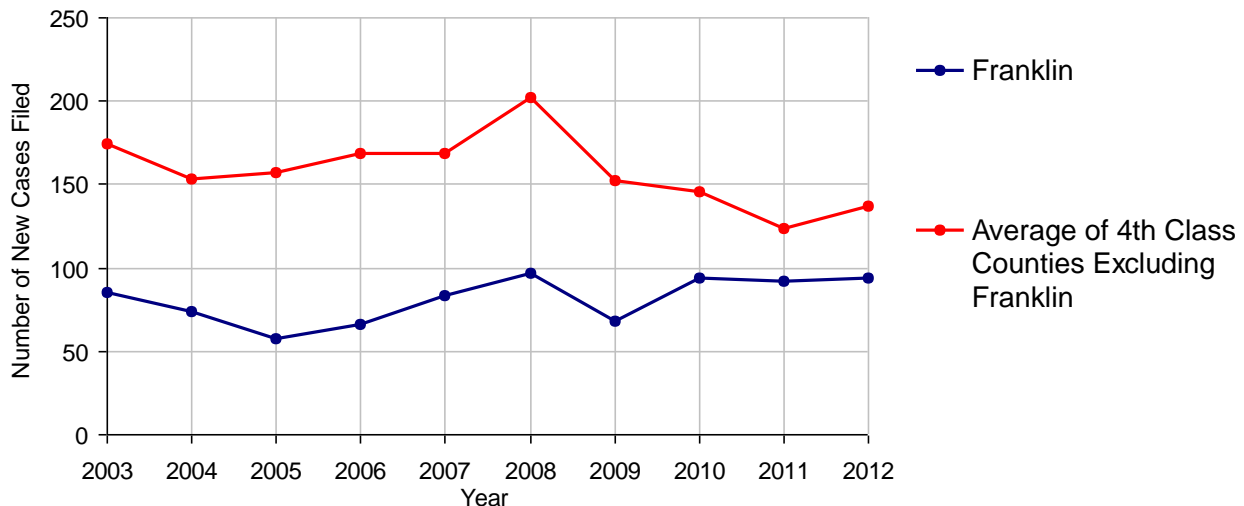


2012 Juvenile Dependency - Active Dependent Inventory

	Abuse/ Neglect	Status Offenses	Total
Cases Pending 1/1/2012	4	1	5
New Petitions Filed in 2012	60	34	94
Other	2	0	2
Total Petitions Available for Processing	66	35	101
Processed by:			
Adjudicated Dependent			
Judge	6	0	6
Master	40	25	65
Adjudicated NOT Dependent			
Judge	1	0	1
Master	0	3	3
Withdrawn/Dismissed/Inactive	13	5	18
Other	0	0	0
Total Petitions Processed	60	33	93
Cases Pending 12/31/2012	6	2	8

Data provided by CPCMS

Abuse/Neglect and Status Offenses New Cases Filed, 2003-2012



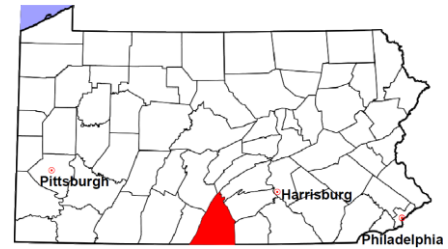
Note: Dependency data for 2002-2010 were collected manually. Dependency data for 2011 and 2012 were provided by CPCMS.

Franklin County

2012 Population Estimate: 151,275

Class of County: 4th

No. of Common Pleas Court Judgeships: 5
(Franklin and Fulton combined)



2012 Juvenile Dependency - Adjudicated Dependent Inventory



	Abuse/ Neglect	Status Offenses	Total
Cases Pending 1/1/2012	57	17	74
New Adjudicated Dependent Cases	46	25	71
Other	3	0	3
Total Adjudicated Dependent Cases	106	42	148

Court Supervision Terminated:

Family Reunification	10	27.8%	16	80.0%	26	46.4%
Adoption	12	33.3%	0		12	21.4%
Placement with a Relative/Guardian	1	2.8%	0		1	1.8%
Aged Out	7	19.4%	4	20.0%	11	19.6%
Other Permanency Outcomes*	3	8.3%	0		3	5.4%
Other**	3	8.3%	0		3	5.4%
Total Adjudicated Dependent Cases Terminated	36	100.0%	20	100.0%	56	100.0%
Cases Pending 12/31/2012	70		22		92	

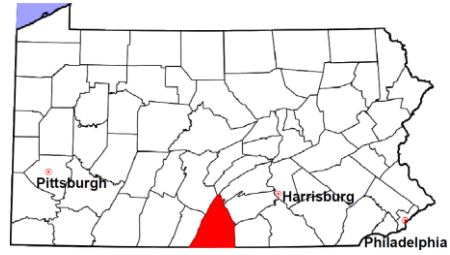
Data provided by CPCMS

* Other Permanency Outcomes include: adjudicated delinquent, death due to natural causes, death due to negligence, emancipation, permanent living arrangement, and parent has come forward.

** Other includes cases where court supervision is terminated due to transfer out of jurisdiction, withdrawal and administrative closure.

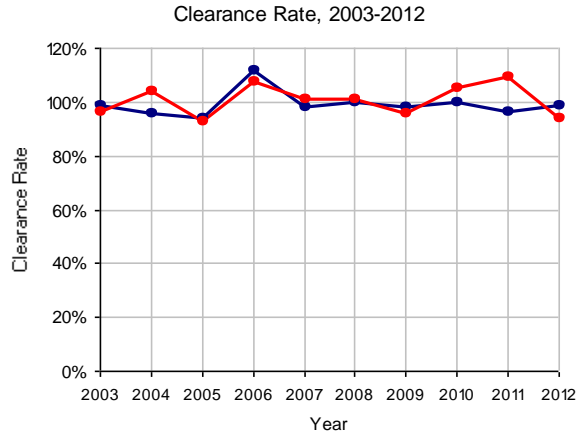
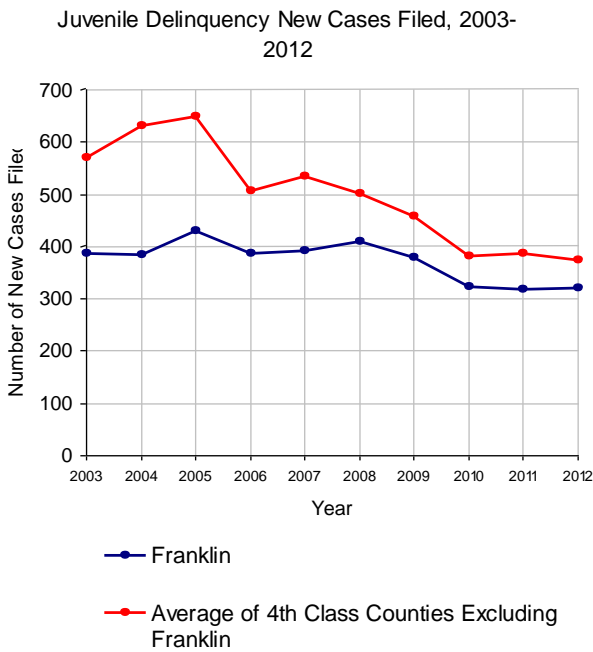
Franklin County

2012 Population Estimate: 151,275
 Class of County: 4th
 No. of Common Pleas Court Judgeships: 5
 (Franklin and Fulton combined)

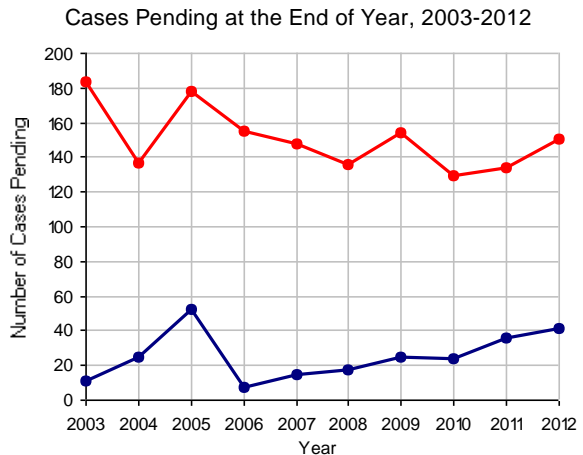


2012 Juvenile Delinquency

	No. of Cases
Cases Pending 1/1/2012	36
New Cases Filed in 2012	321
Cases Available for Processing	357
Processed By:	
Judge	161 50.9%
Non-Judicial Officer	116 36.7%
Other	39 12.3%
Cases Processed	316 100.0%
Cases Pending 12/31/2012	41

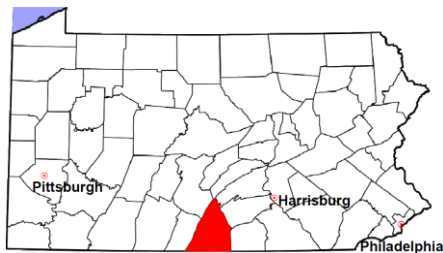


Note: Clearance Rate = Cases Processed / New Cases Filed



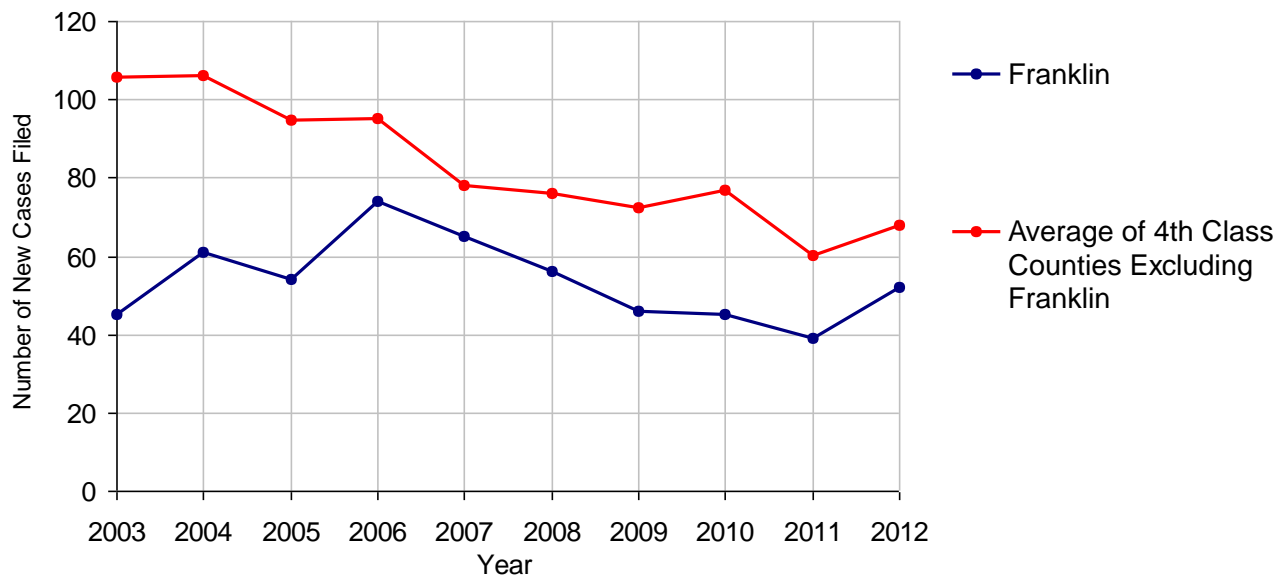
Franklin County

2012 Population Estimate: 151,275
 Class of County: 4th
 No. of Common Pleas Court Judgeships: 5
 (Franklin and Fulton combined)



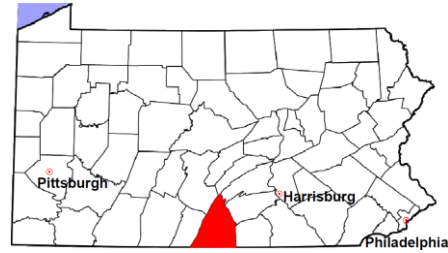
2012 Accounts	No. of Cases
Cases Pending 1/1/2012	16
New Cases Filed in 2012	52
Cases Available for Processing	68
Processed By:	
Contested before a Judge	1 1.8%
Contested before a Non-judicial Officer	0
Uncontested	54 98.2%
Other	0
Cases Processed	55 100.0%
Cases Pending 12/31/2012	13

Accounts New Cases Filed, 2003-2012



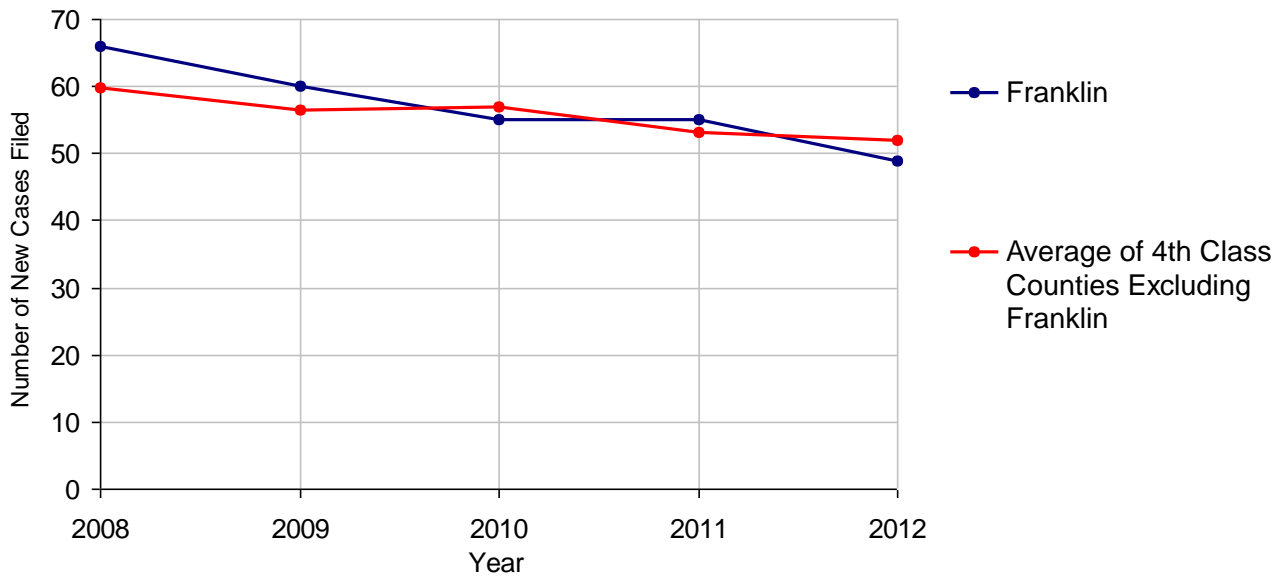
Franklin County

2012 Population Estimate: 151,275
 Class of County: 4th
 No. of Common Pleas Court Judgeships: 5
 (Franklin and Fulton combined)



2012 Adoptions		No. of Cases	
Cases Pending 1/1/2012		11	
New Cases Filed in 2012		49	
Cases Available for Processing		60	
Processed By:			
Contested before a Judge	Granted	0	
	Denied	0	
Uncontested	Granted	48	100.0%
	Denied	0	
Other		0	
Cases Processed		48	100.0%
Cases Pending 12/31/2012		12	

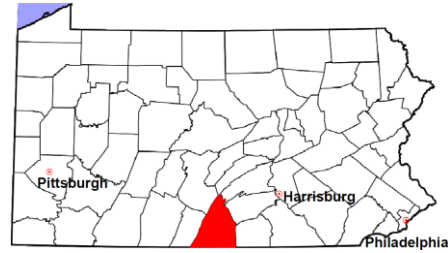
Adoptions New Cases Filed, 2008-2012



Note: Prior to 2008, each petition was counted as one new case, regardless of the number of children listed on the petition. Starting in 2008, each child listed on a petition is counted as a separate case. Therefore, statistics since 2008 should not be compared to statistics prior to 2008.

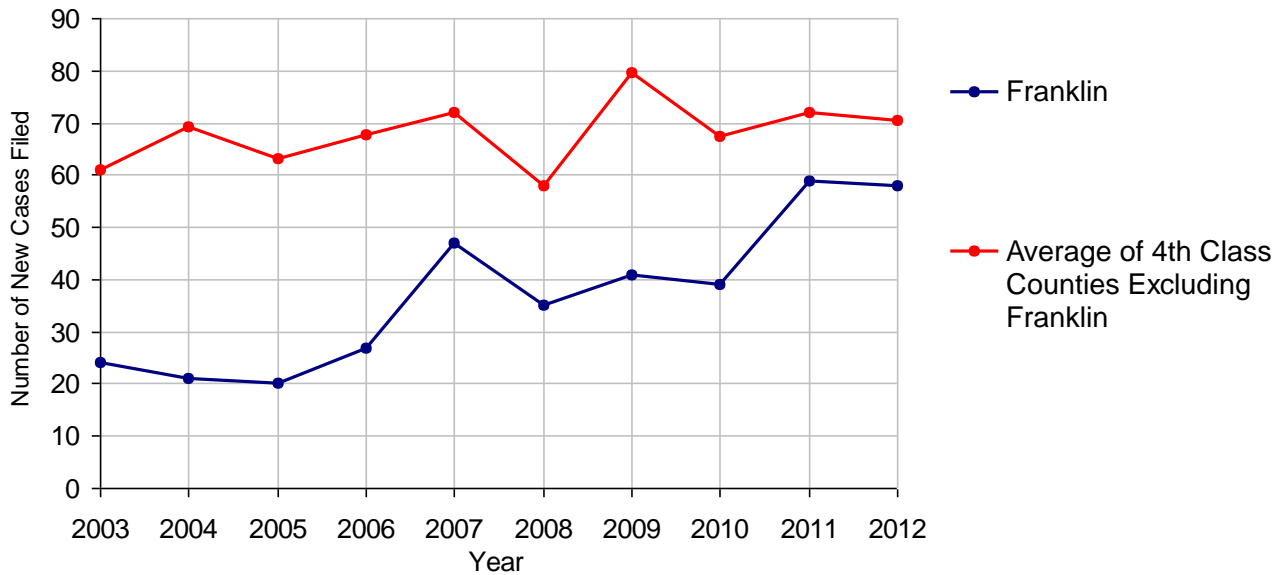
Franklin County

2012 Population Estimate: 151,275
 Class of County: 4th
 No. of Common Pleas Court Judgeships: 5
 (Franklin and Fulton combined)



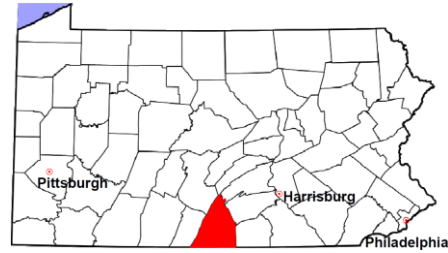
2012 Relinquishments/Terminations	No. of Cases
Cases Pending 1/1/2012	19
New Cases Filed in 2012	58
Cases Available for Processing	77
Processed By:	
Contested before a Judge	1 1.8%
Uncontested	45 81.8%
Other	9 16.4%
Cases Processed	55 100.0%
Cases Pending 12/31/2012	22

Relinquishments/Terminations New Cases Filed, 2003-2012



Franklin County

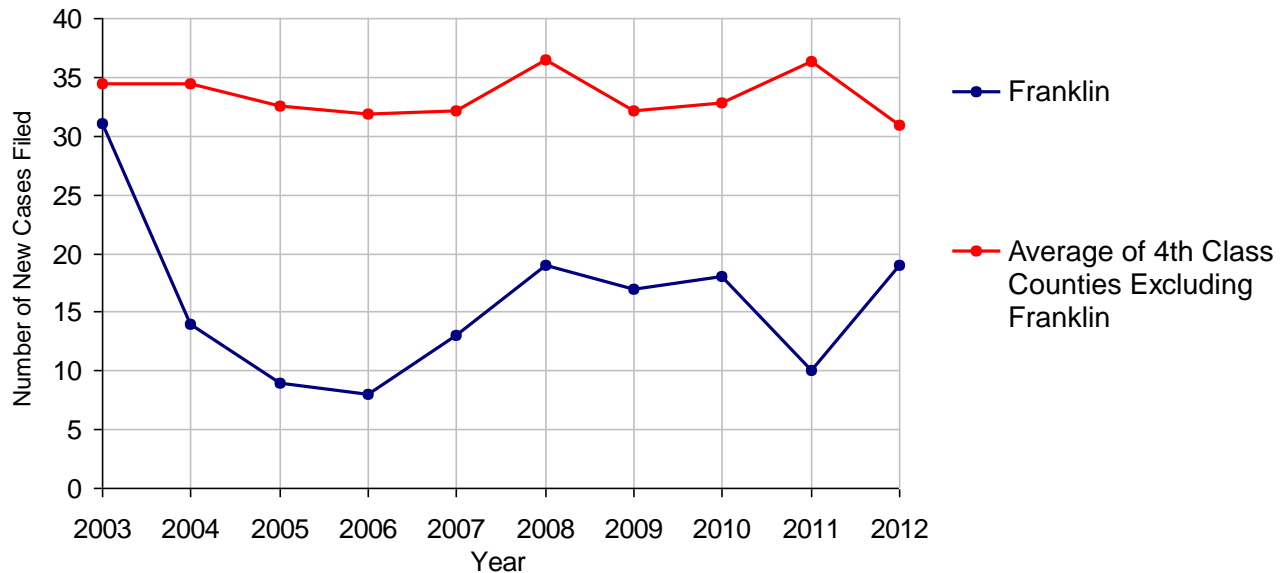
2012 Population Estimate: 151,275
 Class of County: 4th
 No. of Common Pleas Court Judgeships: 5
 (Franklin and Fulton combined)



2012 Appointment of Guardians	No. of Cases	
Cases Pending 1/1/2012	1 (R)	
New Cases Filed in 2012	19	
Cases Available for Processing	20	
Processed By:		
Contested before a Judge	0	
Uncontested	15	93.8%
Other	1	6.3%
Cases Processed	16	100.0%
Cases Pending 12/31/2012	4	

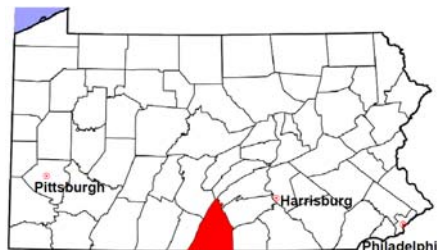
(R) - Revised

Appointment of Guardians New Cases Filed, 2003-2012



Franklin County

2012 Population Estimate: 151,275
 Class of County: 4th
 No. of Common Pleas Court Judgeships: 5
 (Franklin and Fulton combined)



2012 Jury Yield and Utilization

Jury Yield

Qualification Questionnaires/Summonses Mailed:	11,946	A		
Returned Undeliverable:	1,039	B	8.7%	Of Qualification Questionnaires/Summonses Mailed
Not Responded to:	226	C	1.9%	
the Number of Prospective Jurors:				
Disqualified:	920	D	7.7%	
Exempted:	237	E	2.0%	
Excused:	1,747	F	14.6%	
Deferred to New Term:	533	G	4.5%	
Deferred from Previous Term:	342	H	2.9%	
Total Number of Qualified Jurors Available for Service:	7,586	I	63.5%	

$I = A - B - C - D - E - F - G + H$

Jury Utilization

the Number of Jurors:				
Reporting for Service:	2,702		35.6%	Of Jurors Qualified and Available
Told Not to Report for Service:	90		1.2%	
Sent to Courtroom for Jury Selection (Voir Dire):	8,041		297.6%	Of Jurors Reporting for Service
Impanelled or Sworn (jurors/alternates):	966		35.8%	
Removed for Cause/Hardship:	152			
Removed by Peremptory Challenge:	924			

Jury Costs

Total Annual Budget for Juror Operations:	\$38,313.00	J
Average Cost Per Juror:	\$3.21	K

$K = J/A$

In mid-2011, AOPC began utilizing the National Center for State Courts' Jury Managers' Toolbox for collecting jury data. In 2012, the counties began providing additional jury data which included information about the summoning practices in the counties. With this additional data, we can now see not only how many citizens come to our courthouses every day in anticipation of serving on a jury, but the number of citizens actually summoned and the number of those summonsed who are exempt, excused or disqualified from service. With this wider view of the jury process, we can determine the efficiency with which our courts operate, and with the assistance of the Jury Managers' Toolbox find guidance in streamlining the jury summoning practices.