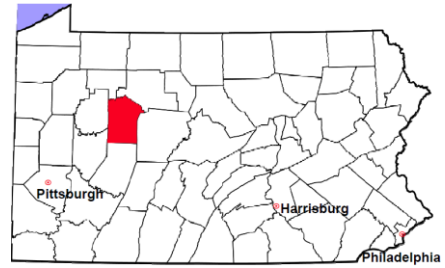


# Jefferson County

2012 Population Estimate: 44,764  
 Class of County: 6th  
 No. of Common Pleas Court Judgeships: 1

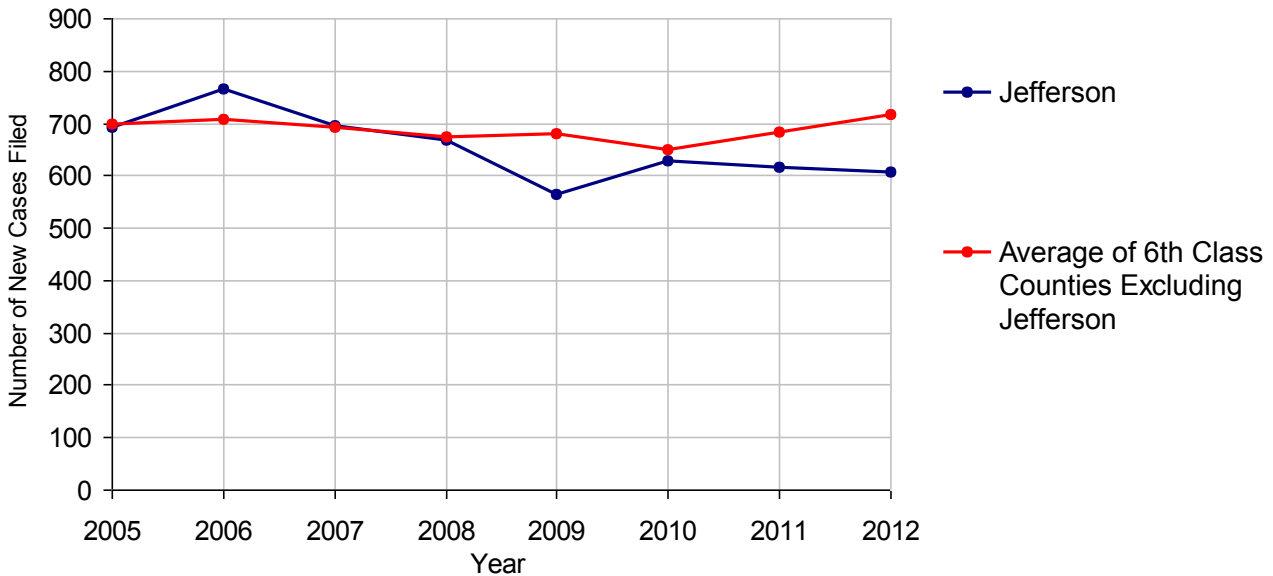


<b>2012 Criminal</b>	<b>No. of Cases</b>	
Cases Pending 1/1/2012	280	
New Cases Filed in 2012	606	
Reopened Cases	45	
<b>Cases Available for Disposition</b>	<b>931</b>	
<b>Disposed by:</b>		
Withdrawn/Dismissed	60	8.0%
ARD	143	19.0%
Guilty Plea	494	65.6%
Non-Jury Trial	2	0.3%
Jury Trial	13	1.7%
Inactive	15	2.0%
Other	26	3.5%
<b>Total Cases Disposed</b>	<b>753</b>	<b>100.0%</b>
<b>Cases Pending 12/31/2012</b>	<b>178</b>	
Cases Awaiting Sentencing	7	

<b>Age of Pending Cases as of 12/31/2012</b>		
0-60 Days	89	50.0%
61-120 Days	48	27.0%
121-180 Days	25	14.0%
181-240 Days	4	2.2%
241-300 Days	4	2.2%
301-360 Days	0	
Over 360 Days	8	4.5%
<b>Total</b>	<b>178</b>	<b>100.0%</b>

Data provided by CPCMS

**Criminal New Cases Filed, 2005-2012**

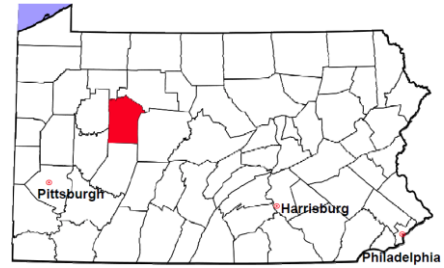


# Jefferson County

2012 Population Estimate: 44,764

Class of County: 6th

No. of Common Pleas Court Judgeships: 1



## 2012 Criminal - New Cases by Case Type



Case Type	Felony	Misdemeanor	Summary /Ungraded	Total
Person	28	58	0	86
Property	93	113	3	209
Drug	68	49	0	117
Weapon	3	1	0	4
Public Order	13	33	0	46
Motor Vehicle - DWI/DUI	0	141	0	141
Motor Vehicle - Other	0	3	0	3
Other	0	0	0	0
<b>Total</b>	<b>205</b>	<b>398</b>	<b>3</b>	<b>606</b>
	<b>33.8%</b>	<b>65.7%</b>	<b>0.5%</b>	<b>100.0%</b>

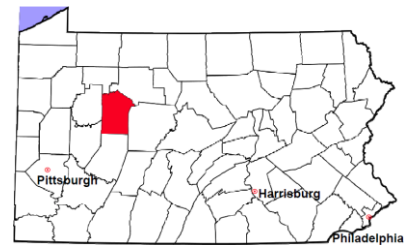
Data provided by CPCMS

# Jefferson County

2012 Population Estimate: 44,764

Class of County: 6th

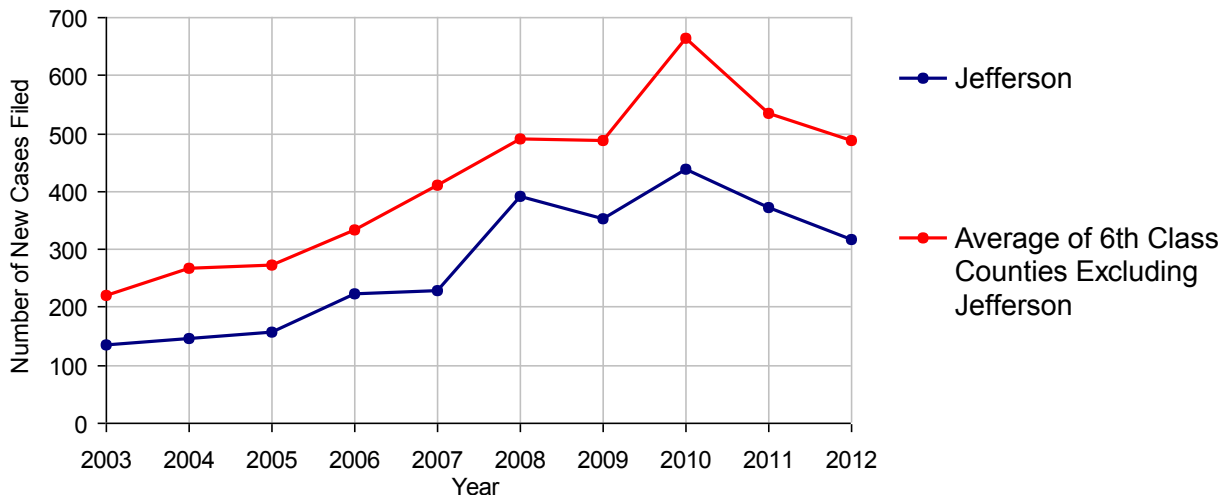
No. of Common Pleas Court Judgeships: 1



2012 Civil	Civil Action	Other	Total
Cases Pending 1/1/2012	162	179	341
Docketed Cases	173	143	316
Arbitration Appeals	0	0	0
Transferred In	0	0	0
Returned to Active	0	0	0
<b>Cases Available for Processing</b>	<b>335</b>	<b>322</b>	<b>657</b>
Disposed By:			
Default Judgments	79	48	127
Cases Decided by Arbitration Board	3	0	3
Dispositive Motions	1	8	9
Settlements	62	40	102
Moved to Inactive Status	0	0	0
Transferred/Withdrawn	0	0	0
Administrative Purge	0	5	5
Other	1	2	3
Jury Trial	0	0	0
Non-Jury Trial	0	2	2
<b>Total Cases Disposed</b>	<b>146</b>	<b>105</b>	<b>251</b>
<b>Cases Pending 12/31/2012</b>	<b>189</b>	<b>217</b>	<b>406</b>

Age of Pending Cases as of 12/31/2012 (Civil Action Only)		
0-6 months	49	25.9%
7-12 months	32	16.9%
13-18 months	38	20.1%
19-24 months	38	20.1%
25-30 months	30	15.9%
31-36 months	1	0.5%
37-42 months	0	
43-48 months	0	
49-54 months	0	
55-60 months	0	
61-66 months	0	
67-72 months	0	
Over 72 months	1	0.5%
<b>Total</b>	<b>189</b>	<b>100.0%</b>

Docketed Cases, 2003-2012



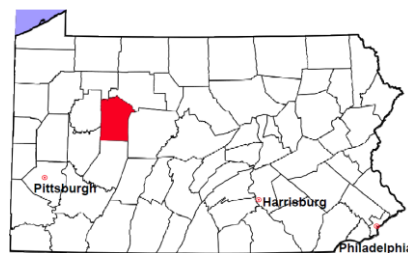
Note: Prior to June 2010, docketed cases under the "Other" category were not reported. The inclusion of these cases starting from June 2010 may contribute to an increase in docketed cases from 2009 to 2010.

# Jefferson County

2012 Population Estimate: 44,764

Class of County: 6th

No. of Common Pleas Court Judgeships: 1



## 2012 Civil - Docketed Cases Listed by Case Type

<b>TORT</b>	<b>29</b>	<b>9.2%</b>	<b>REAL PROPERTY</b>	<b>104</b>	<b>32.9%</b>
<i>(does not include mass tort)</i>					
Intentional	0		Ejectment*	7	
Malicious Prosecution	0		Eminent Domain/Condemnation	3	
Motor Vehicle	14		Ground Rent	0	
Nuisance	0		Landlord/Tenant Dispute	1	
Premise Liability	8		Mortgage Foreclosure:		
Product Liability	0		Residential*	56	
Slander/Libel/Defamation	0		Commercial*	26	
Other	7		Partition of Real Property*	0	
<b>MASS TORT</b>	<b>1</b>	<b>0.3%</b>	Quiet Title*	9	
Asbestos	1		Other*	2	
Tobacco	0		<b>CIVIL APPEALS</b>	<b>15</b>	<b>4.7%</b>
Toxic Tort - DES	0		<i>- Administrative Agencies</i>		
Toxic Tort - Implant	0		Board of Assessment*	3	
Toxic Waste	0		Board of Elections*	0	
Other	0		Dept. of Transportation*	10	
<b>PROFESSIONAL LIABILITY</b>	<b>2</b>	<b>0.6%</b>	Zoning Board*	0	
Dental	0		Statutory Appeal - Other*	0	
Legal	0		Other*	2	
Medical Malpractice	1		<b>MISCELLANEOUS</b>	<b>25</b>	<b>7.9%</b>
Other	1		Common Law/		
<b>CONTRACT</b>	<b>140</b>	<b>44.3%</b>	Statutory Arbitration*	0	
<i>(does not include judgments)</i>			Declaratory Judgment*	1	
Buyer Plaintiff	1		Mandamus*	0	
Debt Collection: Credit Card	64		Non-Domestic Relations		
Debt Collection: Other	57		Restraining Order*	0	
Employment Dispute:			Quo Warranto*	0	
Employment Dispute: Discriminatio	1		Replevin*	3	
Employment Dispute: Other	1		Other*	21	
Other	16		<b>TOTAL DOCKETED CASES:</b>	<b>316</b>	<b>100%</b>

### Of the Docketed Cases:

Pro Se Filings: 13 4.1%      Class Action Suits: 4 1.3%      MDJ Appeals: 27 8.5%

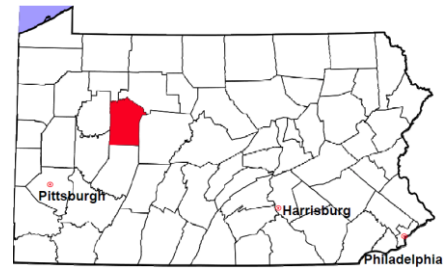
\* Civil Other

# Jefferson County

2012 Population Estimate: 44,764

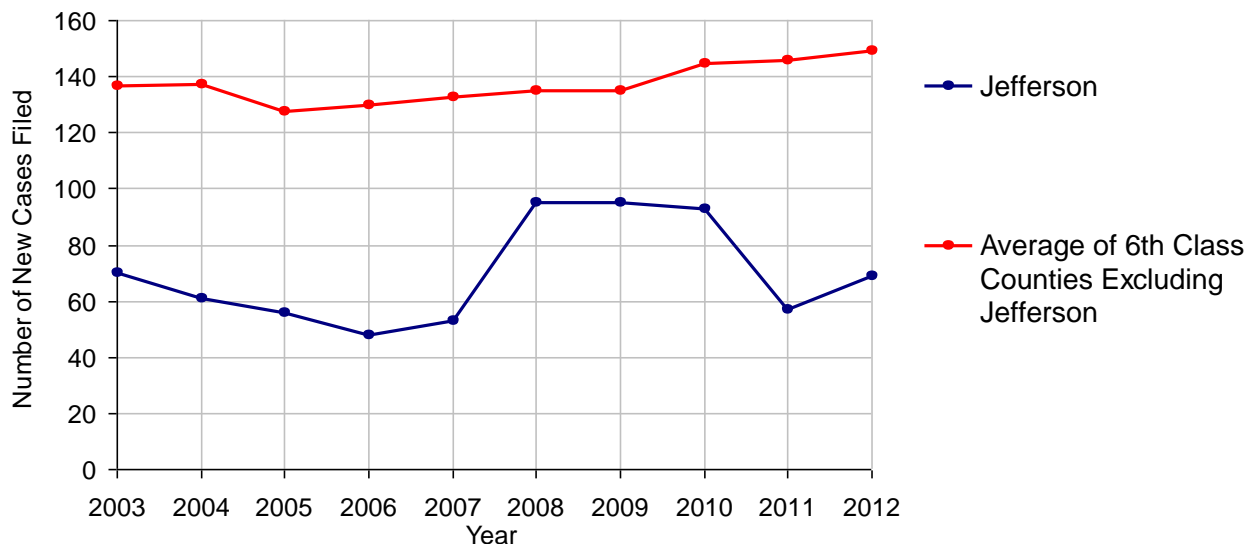
Class of County: 6th

No. of Common Pleas Court Judgeships: 1



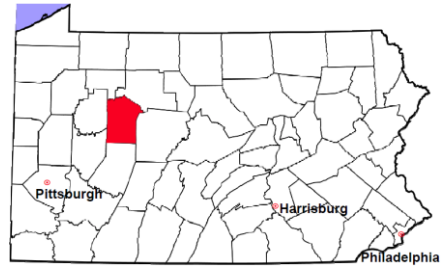
<b>2012 Protection From Abuse</b>	<b>No. of Petitions</b>
Cases Pending 1/1/2012	4
New Cases Filed in 2012	69
<i>Of these, Petitions Requesting Temporary Orders: 69 (100.0%)</i>	
<i>Temporary Orders DENIED: 9 (13.0%), Temporary Orders GRANTED: 60 (87.0%)</i>	
<b>Cases Available for Processing</b>	<b>73</b>
Processed By:	
Temporary Order DENIED After Ex Parte Hearing and No Evidentiary Hearing Scheduled	8 12.5%
Temporary Order DISMISSED After Evidentiary Hearing and No Final Order Entered	1 1.6%
Final Order DENIED After Evidentiary Hearing Before a Judge	1 1.6%
Final Order GRANTED After Evidentiary Hearing Before a Judge	7 10.9%
Plaintiff Did Not Appear For Evidentiary Hearing	0
Final Order by STIPULATION OR AGREEMENT Between the Parties	35 54.7%
Petition WITHDRAWN by Plaintiff	11 17.2%
TRANSFERRED to Another Jurisdiction	0
DECEASED Party	0
Other	1 1.6%
<b>Cases Processed</b>	<b>64 100.0%</b>
<b>Cases Pending 12/31/2012</b>	<b>9</b>

**PFA New Cases Filed, 2003-2012**



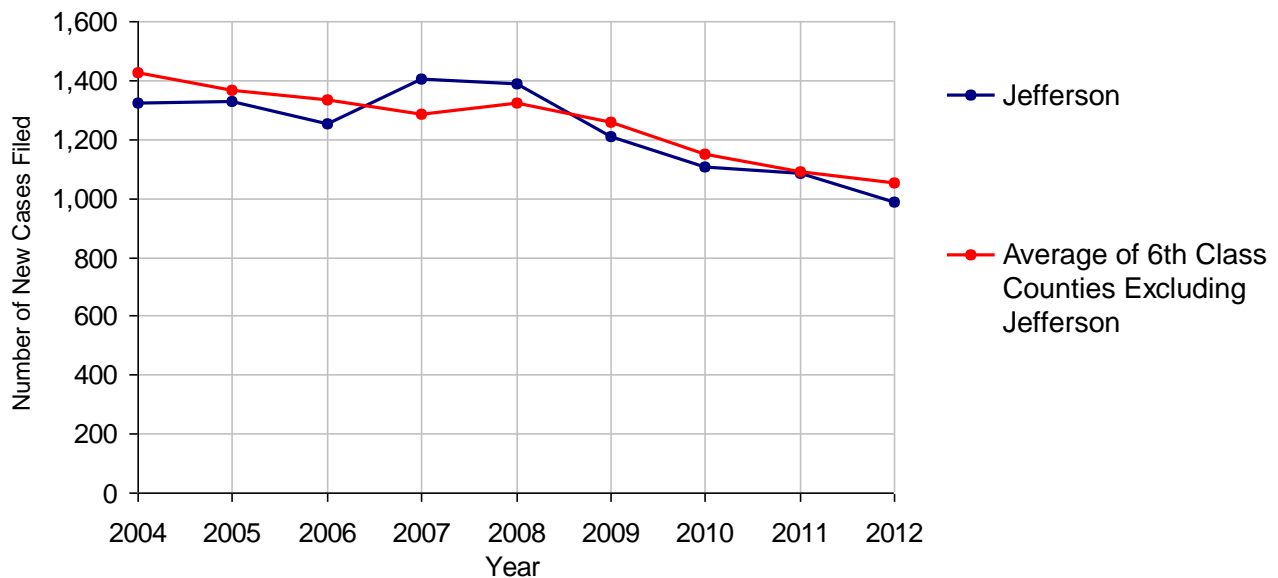
# Jefferson County

2012 Population Estimate: 44,764  
 Class of County: 6th  
 No. of Common Pleas Court Judgeships: 1



<b>2012 Spousal &amp; Child Support</b>	<b>No. of Petitions</b>	
Cases Pending 1/1/2012	111	
New Cases Filed in 2012	985	
Dockets Transferred In (+)	12	
Dockets Transferred Out (-)	20	
<b>Cases Available for Processing</b>	<b>1,088</b>	
Processed By:		
Judge	15	1.5%
Intake Officer	989	98.5%
Hearing Officer	0	
Other	0	
<b>Cases Processed</b>	<b>1,004</b>	<b>100.0%</b>
<b>Cases Pending 12/31/2012</b>	<b>84</b>	

**Spousal & Child Support New Cases Filed, 2004-2012**

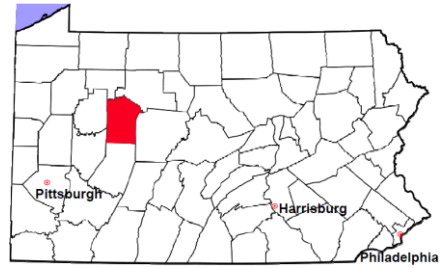


# Jefferson County

2012 Population Estimate: 44,764

Class of County: 6th

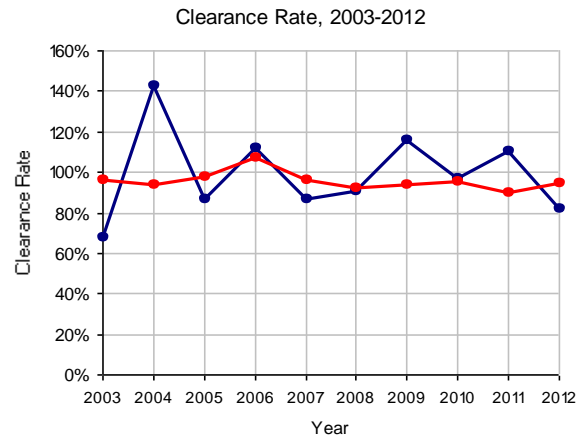
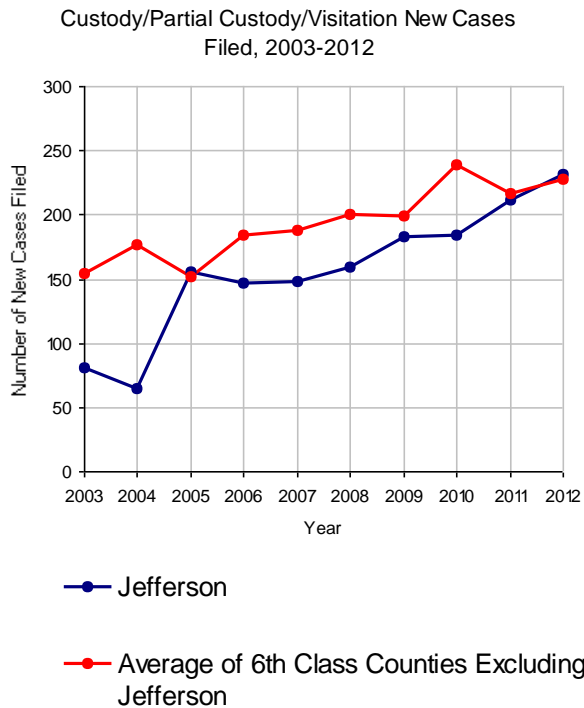
No. of Common Pleas Court Judgeships: 1



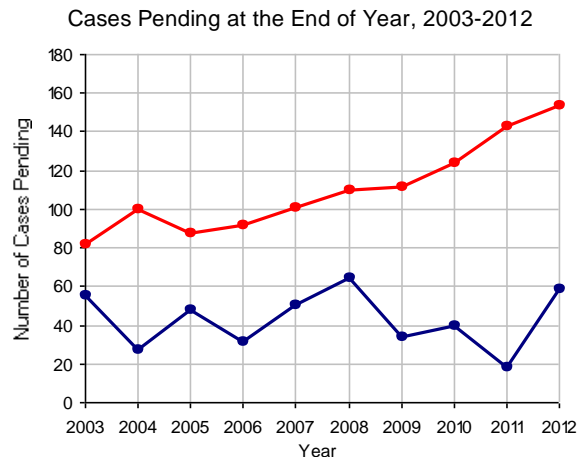
## 2012 Custody/Partial Custody/Visitation

No. of Petitions

Cases Pending 1/1/2012	18
New Cases Filed in 2012	232
<b>Cases Available for Processing</b>	<b>250</b>
Processed By:	
Judge	34 17.8%
Non-Judicial Officer	41 21.5%
Other	116 60.7%
<b>Cases Processed</b>	<b>191 100.0%</b>
<b>Cases Pending 12/31/2012</b>	<b>59</b>

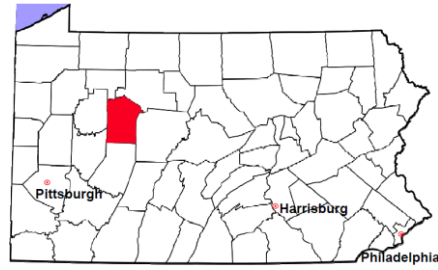


Note: Clearance Rate = Cases Processed / New Cases Filed



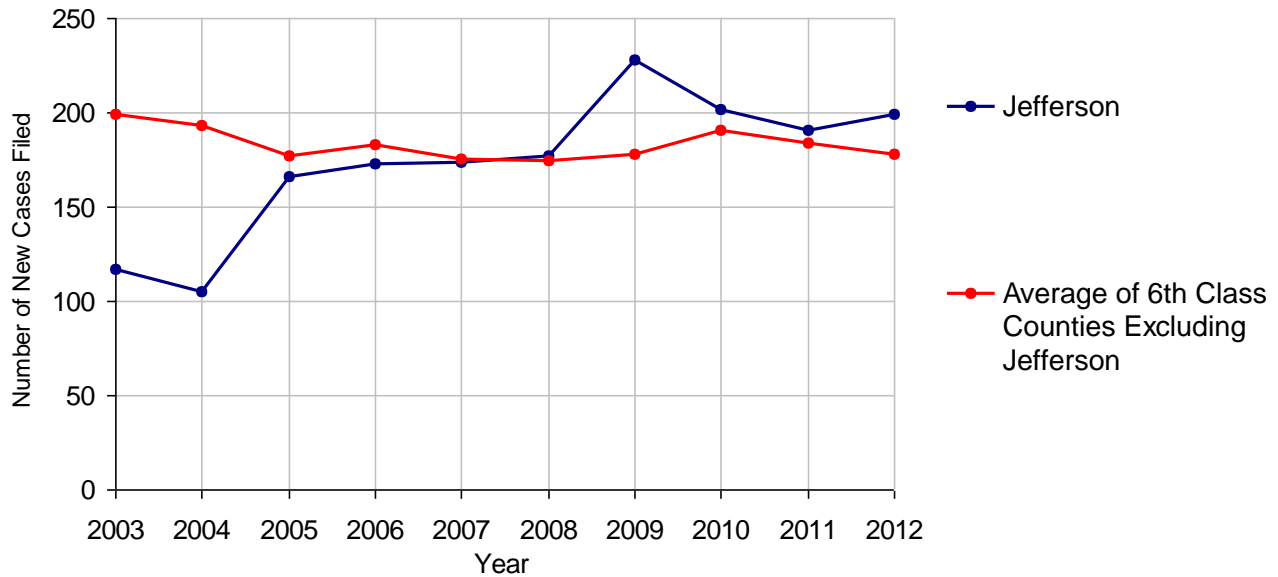
# Jefferson County

2012 Population Estimate: 44,764  
 Class of County: 6th  
 No. of Common Pleas Court Judgeships: 1



<b>2012 Divorce</b>	<b>No. of Petitions</b>	
Cases Pending 1/1/2012	137	
New Cases Filed in 2012	199	
<b>Cases Available for Processing</b>	<b>336</b>	
Processed By:		
Contested Before a Judge	8	4.7%
Contested Before a Master	15	8.7%
Uncontested	141	82.0%
Other	8	4.7%
<b>Cases Processed</b>	<b>172</b>	<b>100.0%</b>
<b>Cases Pending 12/31/2012</b>	<b>164</b>	

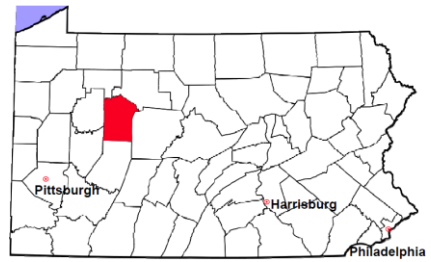
**Divorce New Cases Filed, 2003-2012**





# Jefferson County

2012 Population Estimate: 44,764  
 Class of County: 6th  
 No. of Common Pleas Court Judgeships: 1



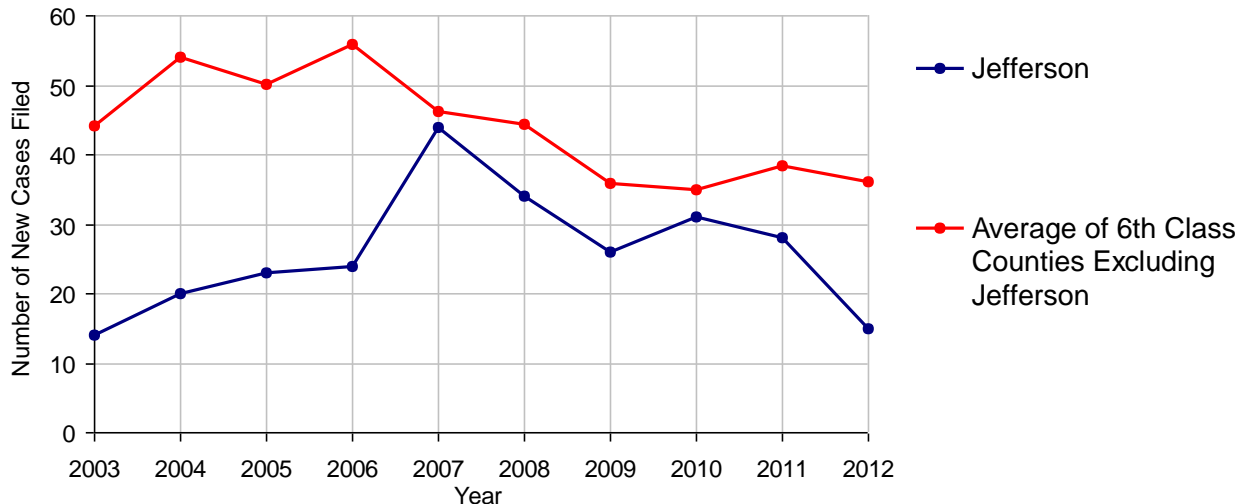
## 2012 Juvenile Dependency - Active Dependent Inventory



	Abuse/ Neglect	Status Offenses	Total
Cases Pending 1/1/2012	5	1	6
New Petitions Filed in 2012	13	2	15
Other	0	0	0
<b>Total Petitions Available for Processing</b>	<b>18</b>	<b>3</b>	<b>21</b>
Processed by:			
Adjudicated Dependent			
Judge	17	3	20
Master	0	0	0
Adjudicated NOT Dependent			
Judge	0	0	0
Master	0	0	0
Withdrawn/Dismissed/Inactive	0	0	0
Other	1	0	1
<b>Total Petitions Processed</b>	<b>18</b>	<b>3</b>	<b>21</b>
<b>Cases Pending 12/31/2012</b>	<b>0</b>	<b>0</b>	<b>0</b>

Data provided by CPCMS

Abuse/Neglect and Status Offenses New Cases Filed, 2003-2012



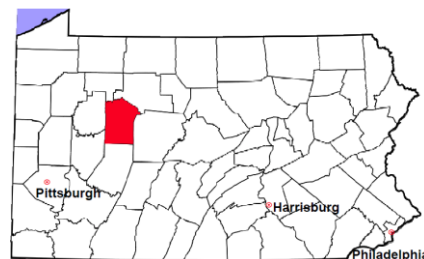
Note: Dependency data for 2002-2010 were collected manually. Dependency data for 2011 and 2012 were provided by CPCMS.

# Jefferson County

2012 Population Estimate: 44,764

Class of County: 6th

No. of Common Pleas Court Judgeships: 1



## 2012 Juvenile Dependency - Adjudicated Dependent Inventory

	Abuse/ Neglect		Status Offenses		Total	
Cases Pending 1/1/2012	33		9		42	
New Adjudicated Dependent Cases	17		3		20	
Other	0		0		0	
<b>Total Adjudicated Dependent Cases</b>	<b>50</b>		<b>12</b>		<b>62</b>	
<b><u>Court Supervision Terminated:</u></b>						
Family Reunification	1	3.4%	3	42.9%	4	11.1%
Adoption	9	31.0%	0		9	25.0%
Placement with a Relative/Guardian	16	55.2%	4	57.1%	20	55.6%
Aged Out	3	10.3%	0		3	8.3%
Other Permanency Outcomes*	0		0		0	
Other**	0		0		0	
<b>Total Adjudicated Dependent Cases Terminated</b>	<b>29</b>	<b>100.0%</b>	<b>7</b>	<b>100.0%</b>	<b>36</b>	<b>100.0%</b>
<b>Cases Pending 12/31/2012</b>	<b>21</b>		<b>5</b>		<b>26</b>	

Data provided by CPCMS

\* Other Permanency Outcomes include: adjudicated delinquent, death due to natural causes, death due to negligence, emancipation, permanent living arrangement, and parent has come forward.

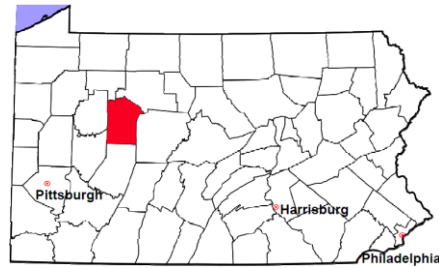
\*\* Other includes cases where court supervision is terminated due to transfer out of jurisdiction, withdrawal and administrative closure.

# Jefferson County

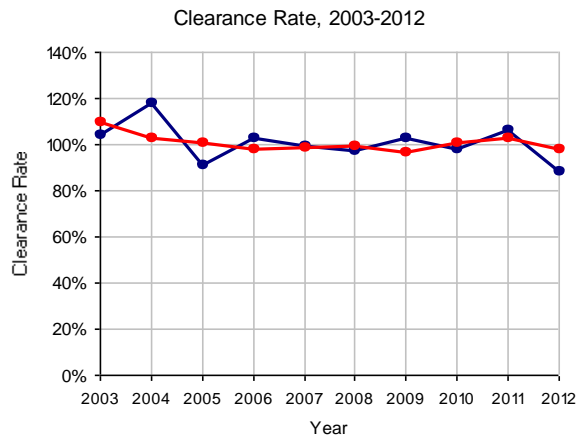
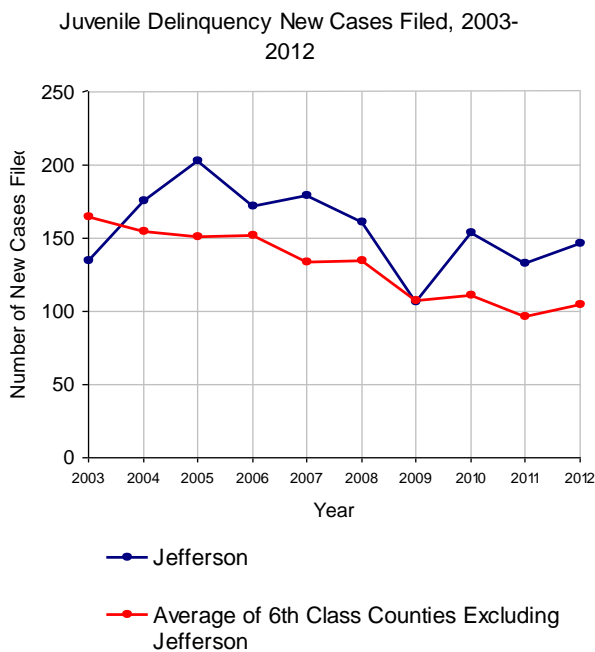
2012 Population Estimate: 44,764

Class of County: 6th

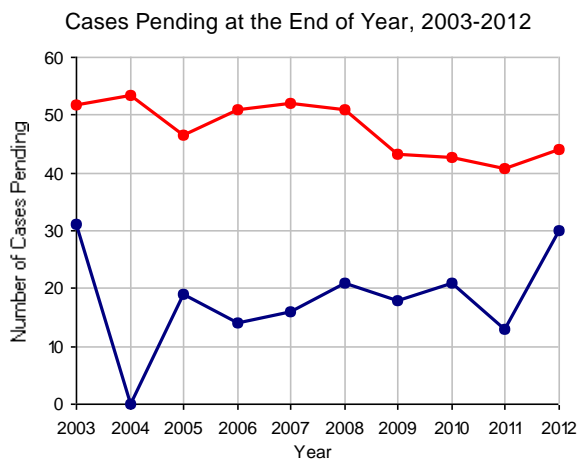
No. of Common Pleas Court Judgeships: 1



2012 Juvenile Delinquency	No. of Cases
Cases Pending 1/1/2012	13
New Cases Filed in 2012	146
<b>Cases Available for Processing</b>	<b>159</b>
Processed By:	
Judge	105 81.4%
Non-Judicial Officer	22 17.1%
Other	2 1.6%
<b>Cases Processed</b>	<b>129 100.0%</b>
<b>Cases Pending 12/31/2012</b>	<b>30</b>

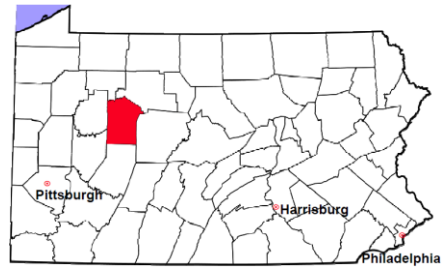


Note: Clearance Rate = Cases Processed / New Cases Filed



# Jefferson County

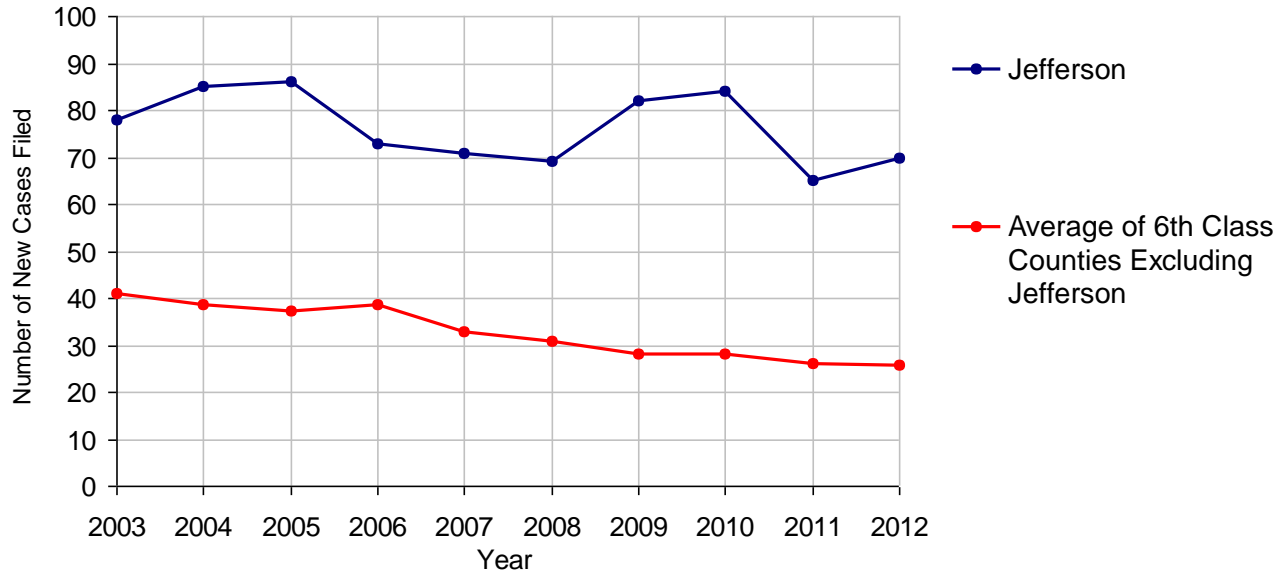
2012 Population Estimate: 44,764  
 Class of County: 6th  
 No. of Common Pleas Court Judgeships: 1



<b>2012 Accounts</b>	<b>No. of Cases</b>	
Cases Pending 1/1/2012	4 (R)	
New Cases Filed in 2012	70	
<b>Cases Available for Processing</b>	<b>74</b>	
Processed By:		
Contested before a Judge	0	
Contested before a Non-judicial Officer	0	
Uncontested	66	100.0%
Other	0	
<b>Cases Processed</b>	<b>66</b>	<b>100.0%</b>
<b>Cases Pending 12/31/2012</b>	<b>8</b>	

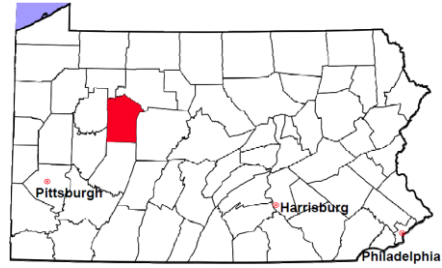
(R) - Revised

**Accounts New Cases Filed, 2003-2012**



# Jefferson County

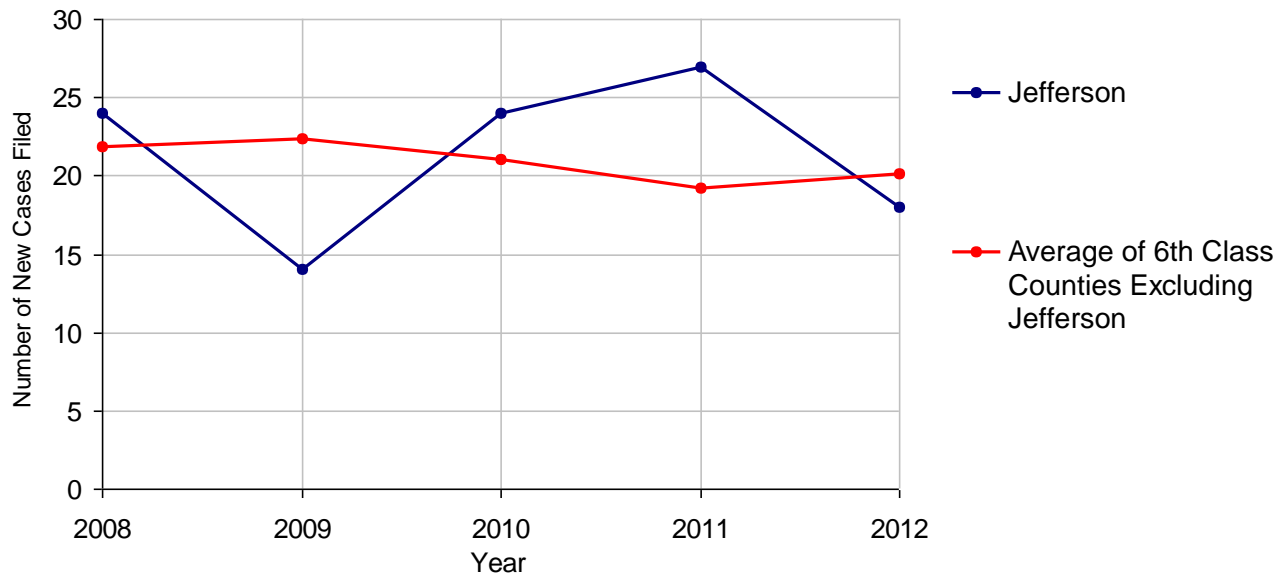
2012 Population Estimate: 44,764  
 Class of County: 6th  
 No. of Common Pleas Court Judgeships: 1



<b>2012 Adoptions</b>		<b>No. of Cases</b>	
Cases Pending 1/1/2012		3 (R)	
New Cases Filed in 2012		18	
<b>Cases Available for Processing</b>		<b>21</b>	
Processed By:			
Contested before a Judge	Granted	2	10.5%
	Denied	0	
Uncontested	Granted	17	89.5%
	Denied	0	
Other		0	
<b>Cases Processed</b>		<b>19</b>	<b>100.0%</b>
<b>Cases Pending 12/31/2012</b>		<b>2</b>	

(R) - Revised

**Adoptions New Cases Filed, 2008-2012**



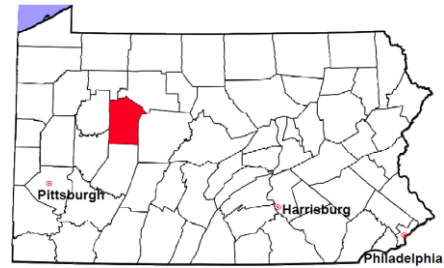
Note: Prior to 2008, each petition was counted as one new case, regardless of the number of children listed on the petition. Starting in 2008, each child listed on a petition is counted as a separate case. Therefore, statistics since 2008 should not be compared to statistics prior to 2008.

# Jefferson County

2012 Population Estimate: 44,764

Class of County: 6th

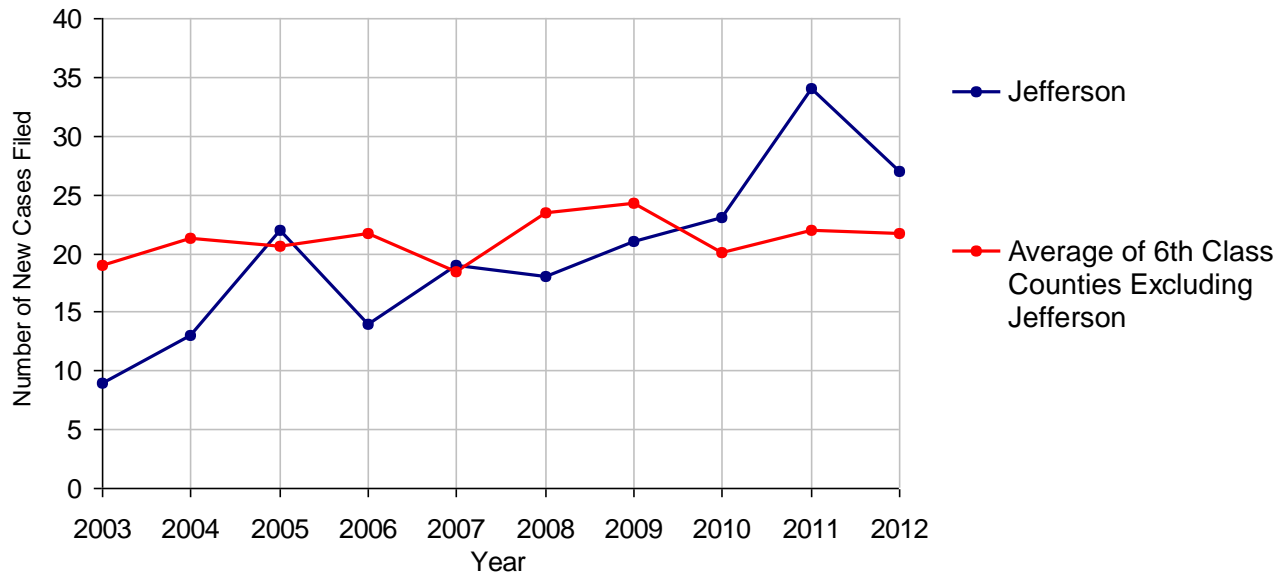
No. of Common Pleas Court Judgeships: 1



<b>2012 Relinquishments/Terminations</b>	<b>No. of Cases</b>	
Cases Pending 1/1/2012	8 (R)	
New Cases Filed in 2012	27	
<b>Cases Available for Processing</b>	<b>35</b>	
Processed By:		
Contested before a Judge	0	
Uncontested	30	96.8%
Other	1	3.2%
<b>Cases Processed</b>	<b>31</b>	<b>100.0%</b>
<b>Cases Pending 12/31/2012</b>	<b>4</b>	

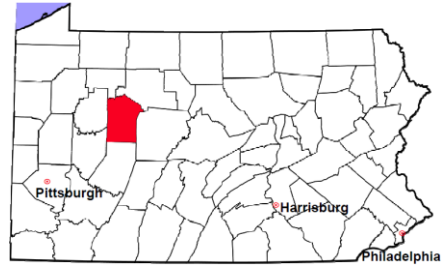
(R) - Revised

**Relinquishments/Terminations New Cases Filed, 2003-2012**



# Jefferson County

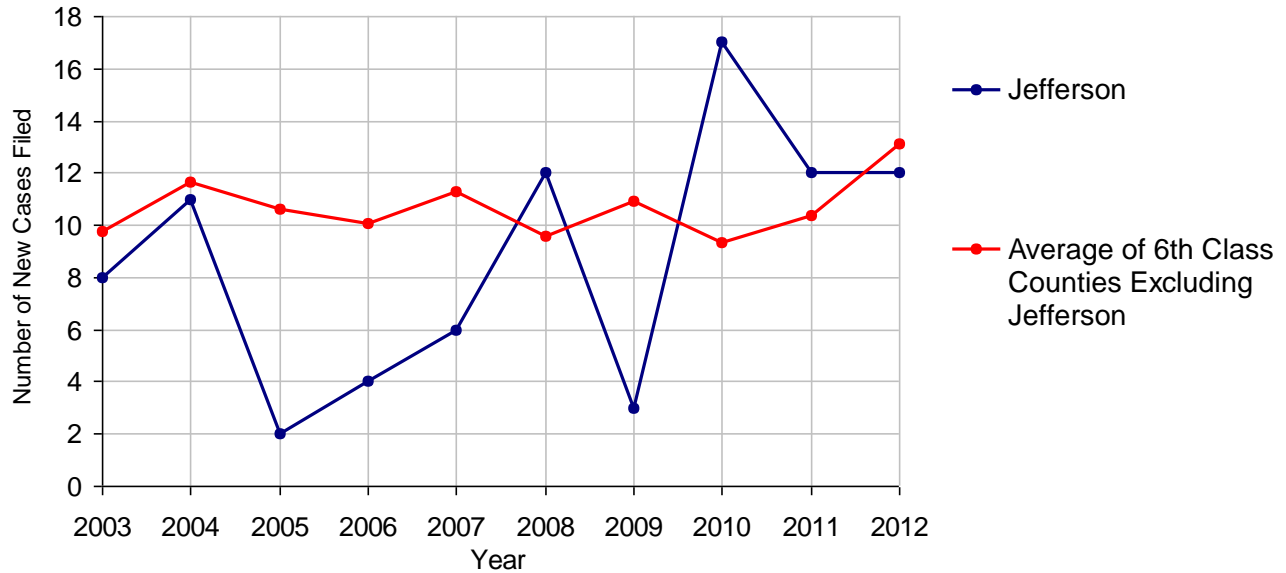
2012 Population Estimate: 44,764  
 Class of County: 6th  
 No. of Common Pleas Court Judgeships: 1



<b>2012 Appointment of Guardians</b>	<b>No. of Cases</b>
Cases Pending 1/1/2012	2 (R)
New Cases Filed in 2012	12
<b>Cases Available for Processing</b>	<b>14</b>
Processed By:	
Contested before a Judge	0
Uncontested	11 100.0%
Other	0
<b>Cases Processed</b>	<b>11 100.0%</b>
<b>Cases Pending 12/31/2012</b>	<b>3</b>

(R) - Revised

**Appointment of Guardians New Cases Filed, 2003-2012**



# Jefferson County

2012 Population Estimate: 44,764

Class of County: 6th

No. of Common Pleas Court Judgeships: 1



## 2012 Jury Yield and Utilization

### Jury Yield

Qualification Questionnaires/Summonses Mailed:	2,106	A		
Returned Undeliverable:	223	B	10.6%	Of Qualification Questionnaires/ Summonses Mailed
Not Responded to:	192	C	9.1%	
the Number of Prospective Jurors:				
Disqualified:	96	D	4.6%	
Exempted:	36	E	1.7%	
Excused:	647	F	30.7%	
Deferred to New Term:	0	G		
Deferred from Previous Term:	0	H		
<b>Total Number of Qualified Jurors Available for Service:</b>	<b>912</b>	<b>I</b>	<b>43.3%</b>	

$I = A - B - C - D - E - F - G + H$

### Jury Utilization

the Number of Jurors:			
Reporting for Service:	852	93.4%	Of Jurors Qualified and Available
Told Not to Report for Service:	0		
Sent to Courtroom for Jury Selection (Voir Dire):	772	90.6%	Of Jurors Reporting for Service
Impanelled or Sworn (jurors/alternates):	212	24.9%	
Removed for Cause/Hardship:	348		
Removed by Peremptory Challenge:	209		

### Jury Costs

<b>Total Annual Budget for Juror Operations:</b>	<b>\$55,022.00</b>	<b>J</b>
<b>Average Cost Per Juror:</b>	<b>\$26.13</b>	<b>K</b>

$K = J/A$

In mid-2011, AOPC began utilizing the National Center for State Courts' Jury Managers' Toolbox for collecting jury data. In 2012, the counties began providing additional jury data which included information about the summoning practices in the counties. With this additional data, we can now see not only how many citizens come to our courthouses every day in anticipation of serving on a jury, but the number of citizens actually summonsed and the number of those summonsed who are exempt, excused or disqualified from service. With this wider view of the jury process, we can determine the efficiency with which our courts operate, and with the assistance of the Jury Managers' Toolbox find guidance in streamlining the jury summonsing practices.