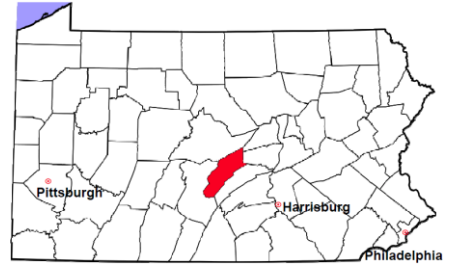


Mifflin County

2012 Population Estimate: 46,773

Class of County: 6th

No. of Common Pleas Court Judgeships: 2



2012 Criminal	No. of Cases
---------------	--------------

Cases Pending 1/1/2012	168
New Cases Filed in 2012	539
Reopened Cases	8
Cases Available for Disposition	715
Disposed by:	
Withdrawn/Dismissed	38 6.6%
ARD	162 28.3%
Guilty Plea	356 62.2%
Non-Jury Trial	4 0.7%
Jury Trial	0
Inactive	4 0.7%
Other	8 1.4%
Total Cases Disposed	572 100.0%
Cases Pending 12/31/2012	143
Cases Awaiting Sentencing	8

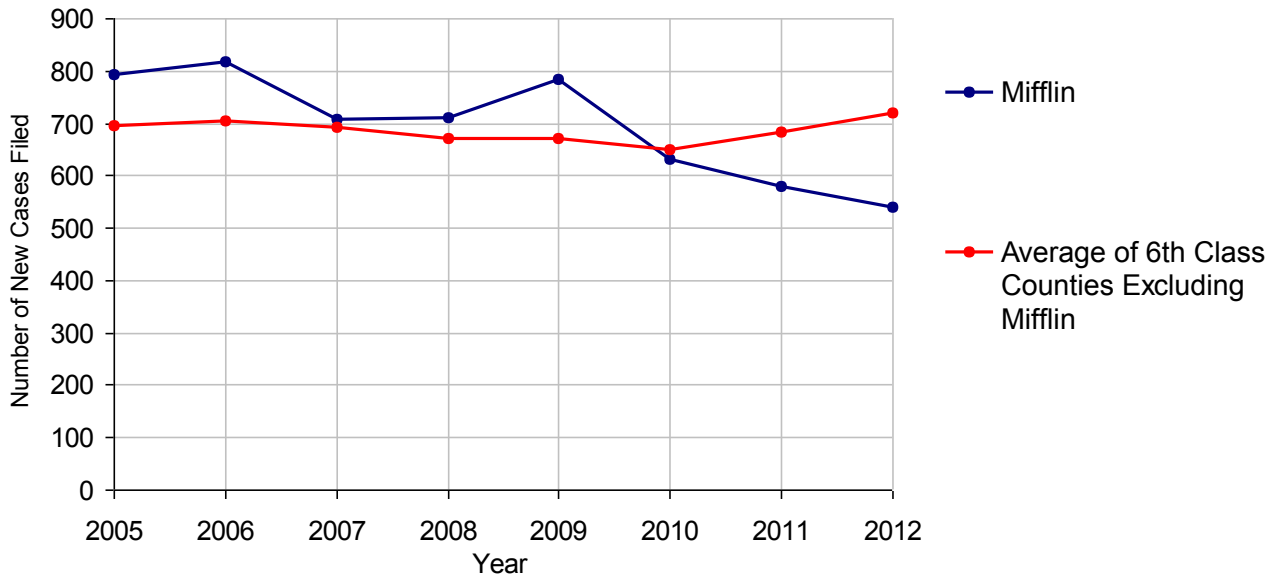


Age of Pending Cases as of 12/31/2012

0-60 Days	53	37.1%
61-120 Days	35	24.5%
121-180 Days	27	18.9%
181-240 Days	14	9.8%
241-300 Days	3	2.1%
301-360 Days	2	1.4%
Over 360 Days	9	6.3%
Total	143	100.0%

Data provided by CPCMS

Criminal New Cases Filed, 2005-2012

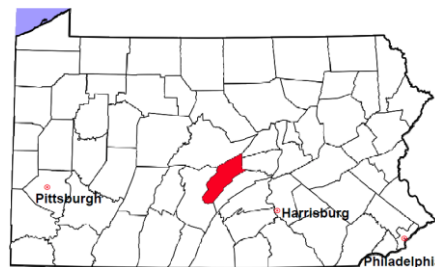


Mifflin County

2012 Population Estimate: 46,773

Class of County: 6th

No. of Common Pleas Court Judgeships: 2



2012 Criminal - New Cases by Case Type



Case Type	Felony	Misdemeanor	Summary /Ungraded	Total
Person	36	70	0	106
Property	65	89	0	154
Drug	26	53	0	79
Weapon	4	4	0	8
Public Order	15	29	0	44
Motor Vehicle - DWI/DUI	0	147	0	147
Motor Vehicle - Other	0	1	0	1
Other	0	0	0	0
Total	146	393	0	539
	27.1%	72.9%		100.0%

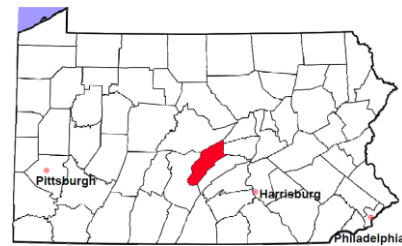
Data provided by CPCMS

Mifflin County

2012 Population Estimate: 46,773

Class of County: 6th

No. of Common Pleas Court Judgeships: 2

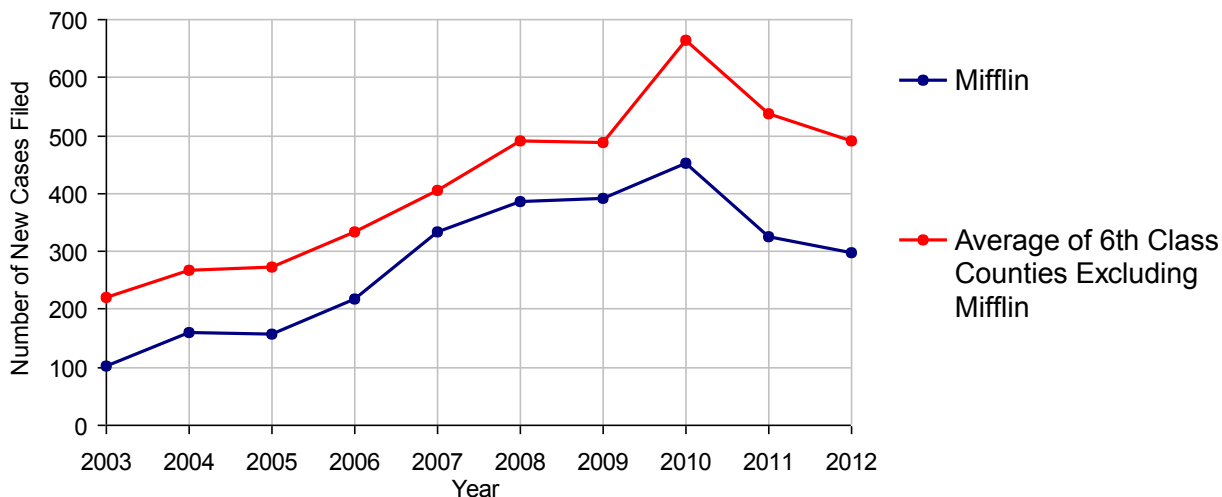


2012 Civil	Civil Action	Other	Total
Cases Pending 1/1/2012	170	99	269
Docketed Cases	151	146	297
Arbitration Appeals	0	0	0
Transferred In	0	0	0
Returned to Active	4	3	7
Cases Available for Processing	325	248	573
Disposed By:			
Default Judgments	27	46	73
Cases Decided by Arbitration Board	0	0	0
Dispositive Motions	0	0	0
Settlements	19	17	36
Moved to Inactive Status	1	3	4
Transferred/Withdrawn	3	0	3
Administrative Purge	0	0	0
Other	42	37	79
Jury Trial	1	0	1
Non-Jury Trial	1	0	1
Total Cases Disposed	94	103	197
Cases Pending 12/31/2012	231	145	376

Age of Pending Cases as of 12/31/2012 (Civil Action Only)

0-6 months	61	26.4%
7-12 months	37	16.0%
13-18 months	36	15.6%
19-24 months	43	18.6%
25-30 months	33	14.3%
31-36 months	12	5.2%
37-42 months	3	1.3%
43-48 months	2	0.9%
49-54 months	2	0.9%
55-60 months	0	
61-66 months	0	
67-72 months	0	
Over 72 months	2	0.9%
Total	231	100.0%

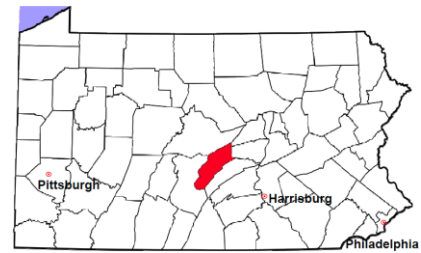
Docketed Cases, 2003-2012



Note: Prior to June 2010, docketed cases under the "Other" category were not reported. The inclusion of these cases starting from June 2010 may contribute to an increase in docketed cases from 2009 to 2010.

Mifflin County

2012 Population Estimate: 46,773
 Class of County: 6th
 No. of Common Pleas Court Judgeships: 2



2012 Civil - Docketed Cases Listed by Case Type

TORT	34	11.4%	REAL PROPERTY	128	43.1%
<i>(does not include mass tort)</i>			Ejectment*	10	
Intentional	0		Eminent Domain/Condemnation	1	
Malicious Prosecution	0		Ground Rent	0	
Motor Vehicle	23		Landlord/Tenant Dispute	3	
Nuisance	0		Mortgage Foreclosure:		
Premise Liability	4		Residential*	93	
Product Liability	1		Commercial*	9	
Slander/Libel/Defamation	0		Partition of Real Property*	1	
Other	6		Quiet Title*	6	
MASS TORT	0		Other*	5	
Asbestos	0		CIVIL APPEALS	6	2.0%
Tobacco	0		<i>- Administrative Agencies</i>		
Toxic Tort - DES	0		Board of Assessment*	2	
Toxic Tort - Implant	0		Board of Elections*	0	
Toxic Waste	0		Dept. of Transportation*	3	
Other	0		Zoning Board*	0	
PROFESSIONAL LIABILITY	3	1.0%	Statutory Appeal - Other*	0	
Dental	0		Other*	1	
Legal	0		MISCELLANEOUS	15	5.1%
Medical Malpractice	3		Common Law/		
Other	0		Statutory Arbitration*	0	
CONTRACT	111	37.4%	Declaratory Judgment*	1	
<i>(does not include judgments)</i>			Mandamus*	1	
Buyer Plaintiff	1		Non-Domestic Relations		
Debt Collection: Credit Card	74		Restraining Order*	0	
Debt Collection: Other	30		Quo Warranto*	0	
Employment Dispute:			Replevin*	2	
Employment Dispute: Discriminatio	0		Other*	11	
Employment Dispute: Other	0		TOTAL DOCKETED CASES:	297	100%
Other	6				

Of the Docketed Cases:

Pro Se Filings: 5 1.7% Class Action Suits: 1 0.3% MDJ Appeals: 7 2.4%

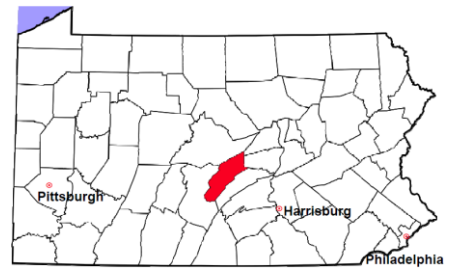
* Civil Other

Mifflin County

2012 Population Estimate: 46,773

Class of County: 6th

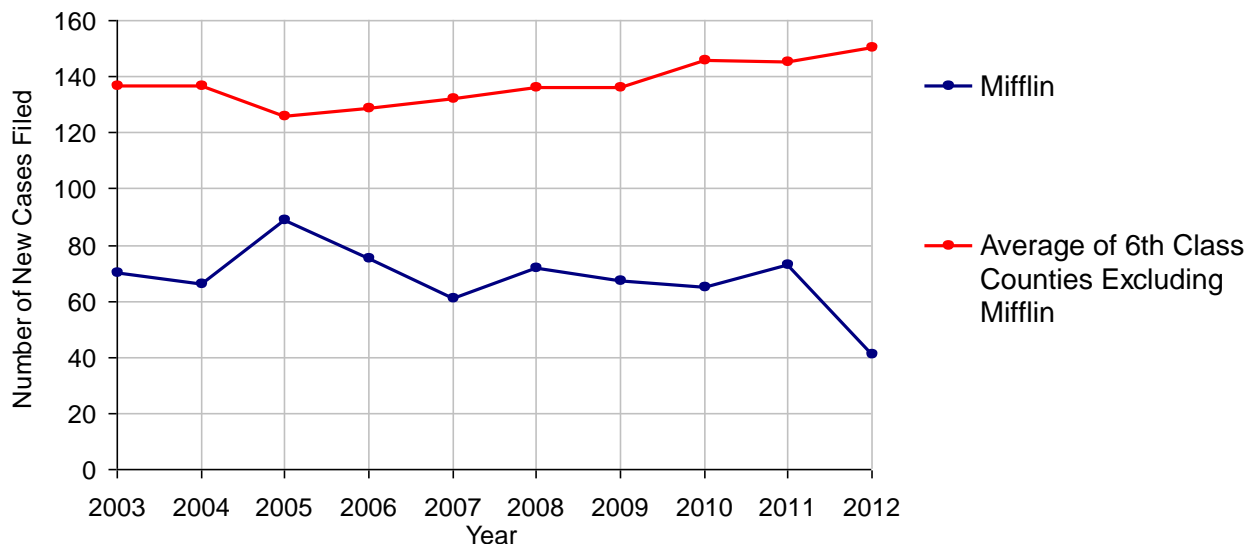
No. of Common Pleas Court Judgeships: 2



2012 Protection From Abuse

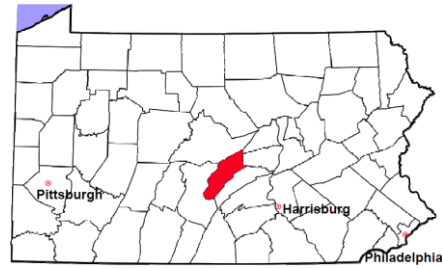
	No. of Petitions
Cases Pending 1/1/2012	7
New Cases Filed in 2012	41
<i>Of these, Petitions Requesting Temporary Orders: 41 (100.0%)</i>	
<i>Temporary Orders DENIED: 0 (0.0%), Temporary Orders GRANTED: 41 (100.0%)</i>	
Cases Available for Processing	48
Processed By:	
Temporary Order DENIED After Ex Parte Hearing and No Evidentiary Hearing Scheduled	1 2.1%
Temporary Order DISMISSED After Evidentiary Hearing and No Final Order Entered	0
Final Order DENIED After Evidentiary Hearing Before a Judge	1 2.1%
Final Order GRANTED After Evidentiary Hearing Before a Judge	10 21.3%
Plaintiff Did Not Appear For Evidentiary Hearing	3 6.4%
Final Order by STIPULATION OR AGREEMENT Between the Parties	15 31.9%
Petition WITHDRAWN by Plaintiff	17 36.2%
TRANSFERRED to Another Jurisdiction	0
DECEASED Party	0
Other	0
Cases Processed	47 100.0%
Cases Pending 12/31/2012	1

PFA New Cases Filed, 2003-2012



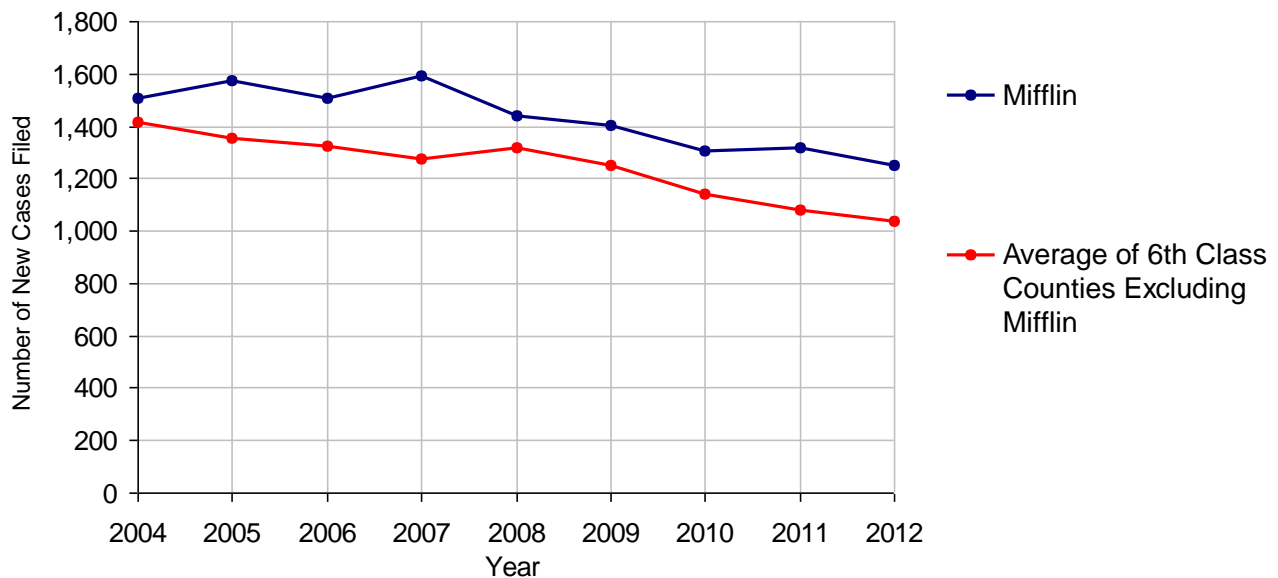
Mifflin County

2012 Population Estimate: 46,773
 Class of County: 6th
 No. of Common Pleas Court Judgeships: 2



2012 Spousal & Child Support	No. of Petitions	
Cases Pending 1/1/2012	151	
New Cases Filed in 2012	1,248	
Dockets Transferred In (+)	22	
Dockets Transferred Out (-)	22	
Cases Available for Processing	1,399	
Processed By:		
Judge	58	4.7%
Intake Officer	1,188	95.3%
Hearing Officer	0	
Other	0	
Cases Processed	1,246	100.0%
Cases Pending 12/31/2012	153	

Spousal & Child Support New Cases Filed, 2004-2012

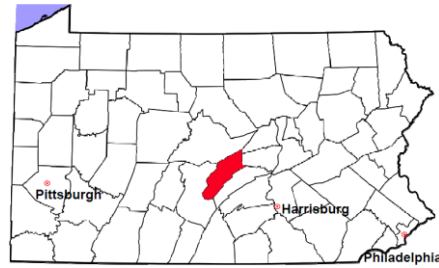


Mifflin County

2012 Population Estimate: 46,773

Class of County: 6th

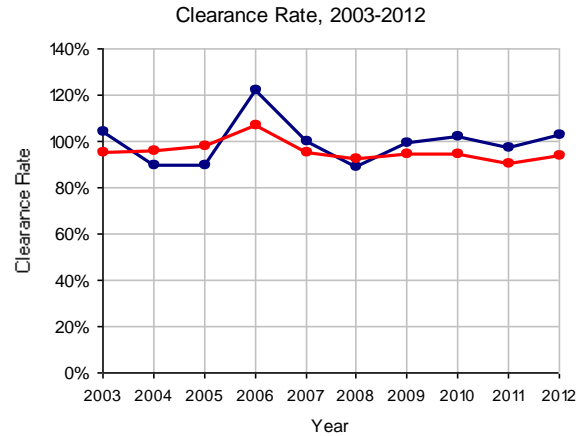
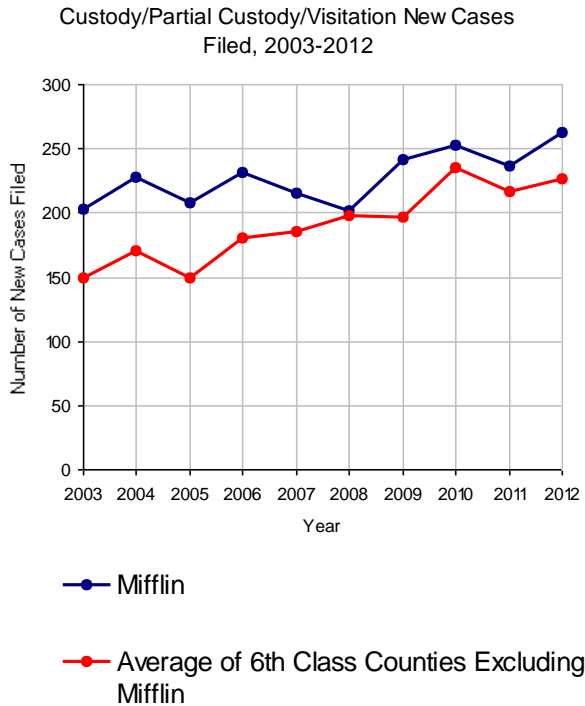
No. of Common Pleas Court Judgeships: 2



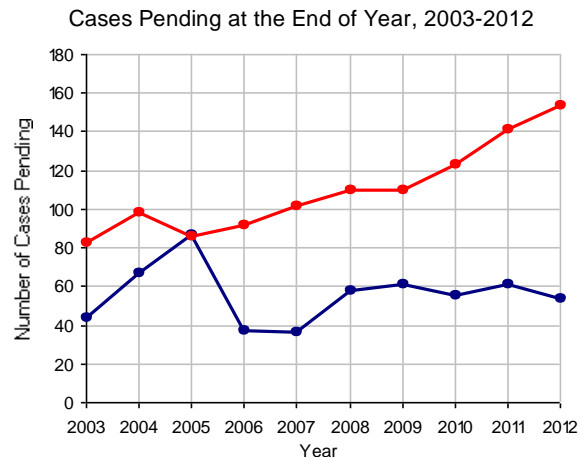
2012 Custody/Partial Custody/Visitation

No. of Petitions

Cases Pending 1/1/2012	61
New Cases Filed in 2012	263
Cases Available for Processing	324
Processed By:	
Judge	132 48.9%
Non-Judicial Officer	0
Other	138 51.1%
Cases Processed	270 100.0%
Cases Pending 12/31/2012	54

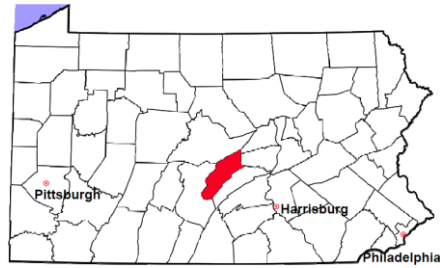


Note: Clearance Rate = Cases Processed / New Cases Filed



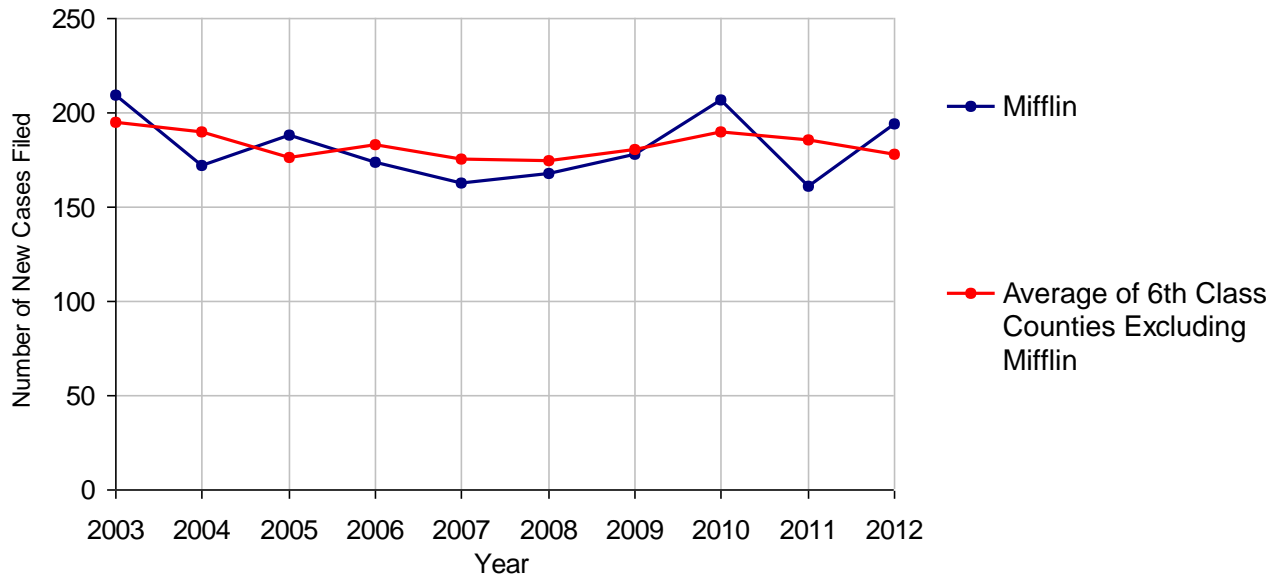
Mifflin County

2012 Population Estimate: 46,773
 Class of County: 6th
 No. of Common Pleas Court Judgeships: 2



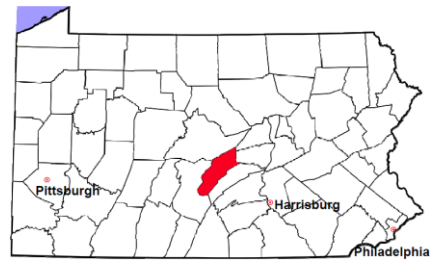
2012 Divorce	No. of Petitions	
Cases Pending 1/1/2012	228	
New Cases Filed in 2012	194	
Cases Available for Processing	422	
Processed By:		
Contested Before a Judge	0	
Contested Before a Master	0	
Uncontested	147	100.0%
Other	0	
Cases Processed	147	100.0%
Cases Pending 12/31/2012	275	

Divorce New Cases Filed, 2003-2012



Mifflin County

2012 Population Estimate: 46,773
 Class of County: 6th
 No. of Common Pleas Court Judgeships: 2



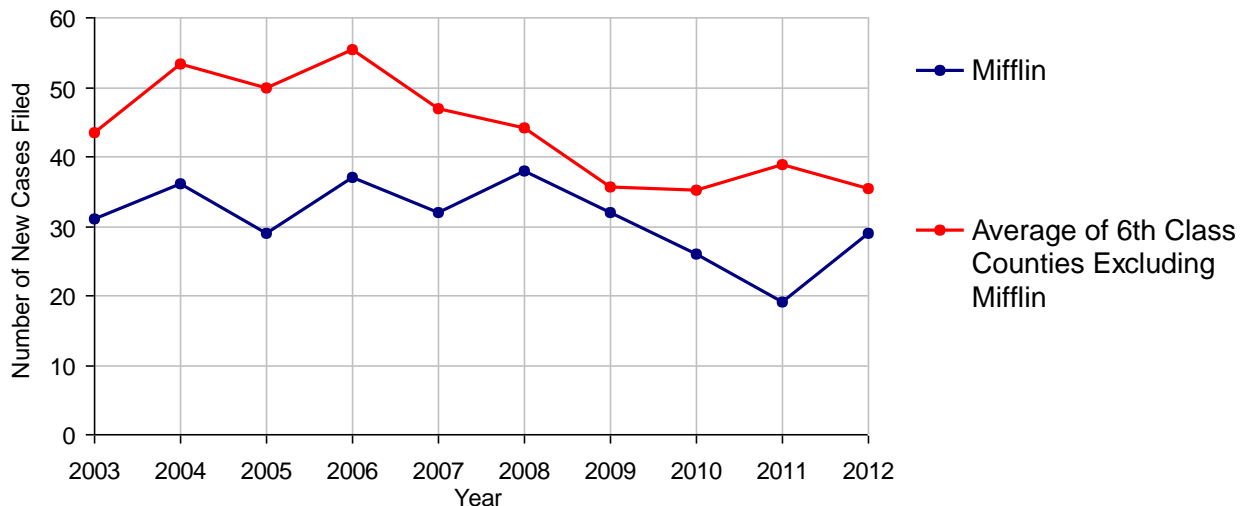
2012 Juvenile Dependency - Active Dependent Inventory



	Abuse/ Neglect	Status Offenses	Total
Cases Pending 1/1/2012	2	0	2
New Petitions Filed in 2012	29	0	29
Other	0	0	0
Total Petitions Available for Processing	31	0	31
Processed by:			
Adjudicated Dependent			
Judge	23	0	23
Master	0	0	0
Adjudicated NOT Dependent			
Judge	0	0	0
Master	0	0	0
Withdrawn/Dismissed/Inactive	1	0	1
Other	2	0	2
Total Petitions Processed	26	0	26
Cases Pending 12/31/2012	5	0	5

Data provided by CPCMS

Abuse/Neglect and Status Offenses New Cases Filed, 2003-2012



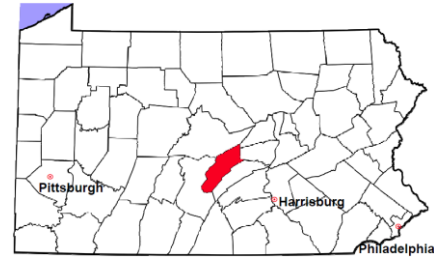
Note: Dependency data for 2002-2010 were collected manually. Dependency data for 2011 and 2012 were provided by CPCMS.

Mifflin County

2012 Population Estimate: 46,773

Class of County: 6th

No. of Common Pleas Court Judgeships: 2



2012 Juvenile Dependency - Adjudicated Dependent Inventory



	Abuse/ Neglect	Status Offenses	Total
Cases Pending 1/1/2012	48	0	48
New Adjudicated Dependent Cases	23	0	23
Other	1	0	1
Total Adjudicated Dependent Cases	72	0	72
<u>Court Supervision Terminated:</u>			
Family Reunification	5 19.2%	0	5 19.2%
Adoption	15 57.7%	0	15 57.7%
Placement with a Relative/Guardian	3 11.5%	0	3 11.5%
Aged Out	1 3.8%	0	1 3.8%
Other Permanency Outcomes*	2 7.7%	0	2 7.7%
Other**	0	0	0
Total Adjudicated Dependent Cases Terminated	26 100.0%	0 100.0%	26 100.0%
Cases Pending 12/31/2012	46	0	46

Data provided by CPCMS

* Other Permanency Outcomes include: adjudicated delinquent, death due to natural causes, death due to negligence, emancipation, permanent living arrangement, and parent has come forward.

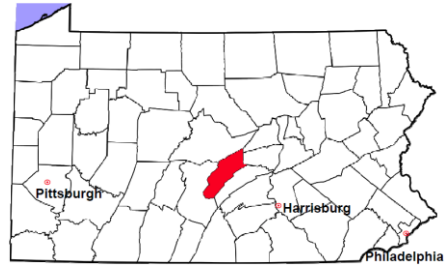
** Other includes cases where court supervision is terminated due to transfer out of jurisdiction, withdrawal and administrative closure.

Mifflin County

2012 Population Estimate: 46,773

Class of County: 6th

No. of Common Pleas Court Judgeships: 2



2012 Juvenile Delinquency

No. of Cases

Cases Pending 1/1/2012 **9**

New Cases Filed in 2012 **86**

Cases Available for Processing 95

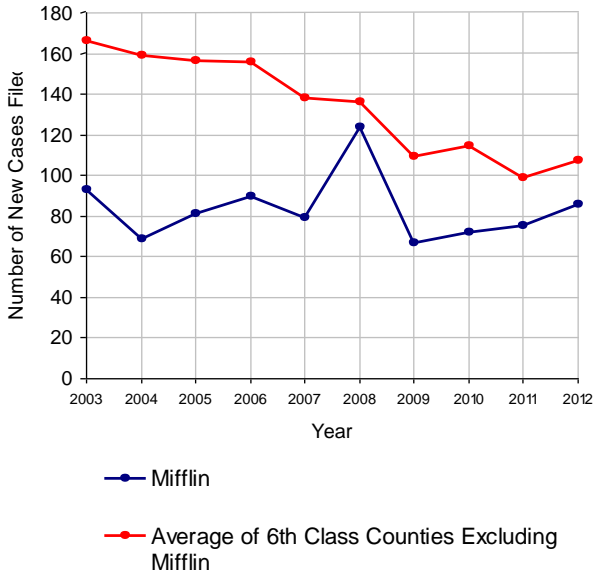
Processed By:

Judge	46	75.4%
Non-Judicial Officer	13	21.3%
Other	2	3.3%

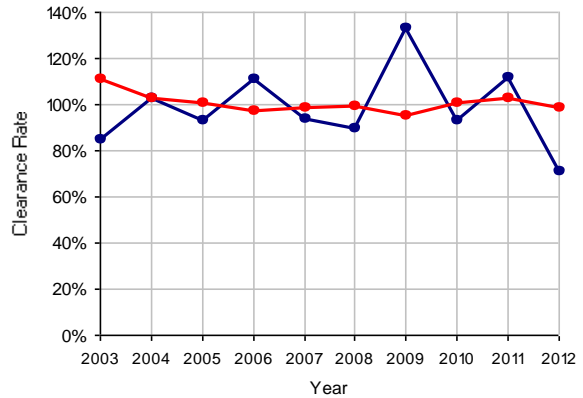
Cases Processed 61 100.0%

Cases Pending 12/31/2012 34

Juvenile Delinquency New Cases Filed, 2003-2012

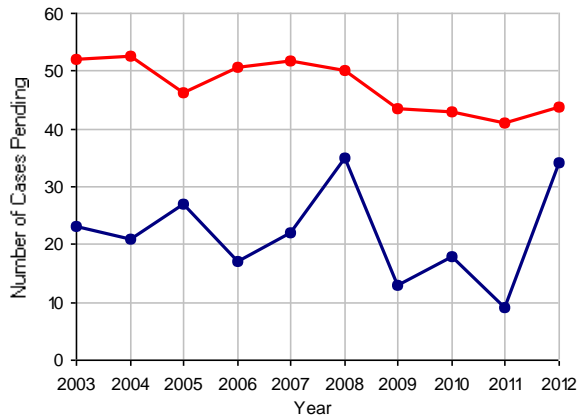


Clearance Rate, 2003-2012



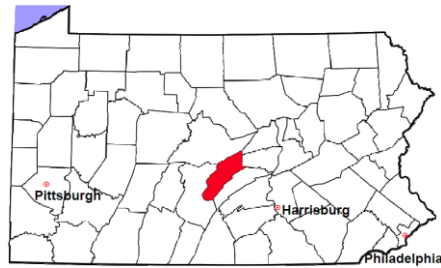
Note: Clearance Rate = Cases Processed / New Cases Filed

Cases Pending at the End of Year, 2003-2012



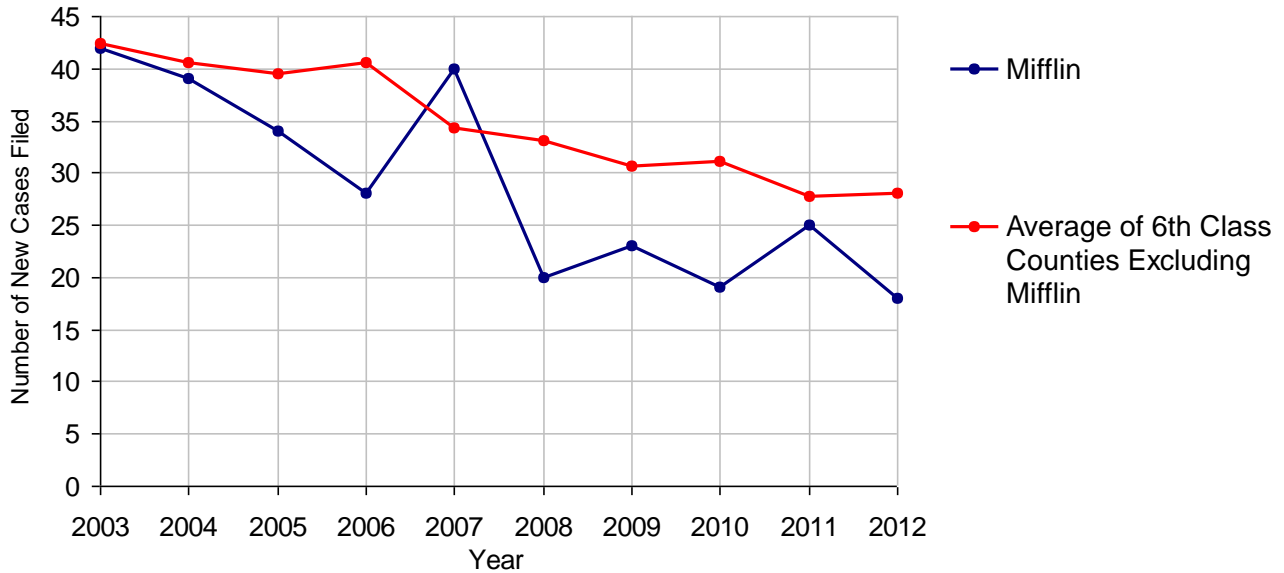
Mifflin County

2012 Population Estimate: 46,773
 Class of County: 6th
 No. of Common Pleas Court Judgeships: 2



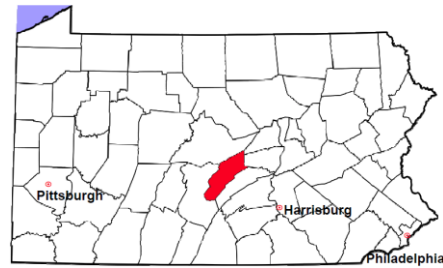
2012 Accounts	No. of Cases	
Cases Pending 1/1/2012	3	
New Cases Filed in 2012	18	
Cases Available for Processing	21	
Processed By:		
Contested before a Judge	0	
Contested before a Non-judicial Officer	0	
Uncontested	18	100.0%
Other	0	
Cases Processed	18	100.0%
Cases Pending 12/31/2012	3	

Accounts New Cases Filed, 2003-2012



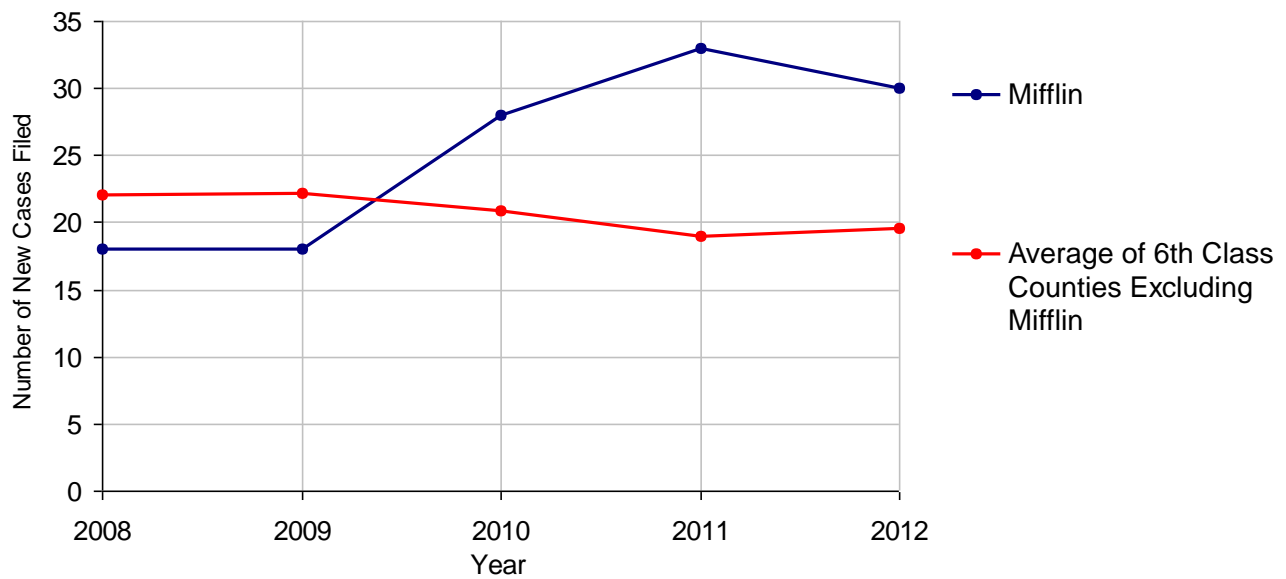
Mifflin County

2012 Population Estimate: 46,773
 Class of County: 6th
 No. of Common Pleas Court Judgeships: 2



2012 Adoptions		No. of Cases	
Cases Pending 1/1/2012		4	
New Cases Filed in 2012		30	
Cases Available for Processing		34	
Processed By:			
Contested before a Judge	Granted	0	
	Denied	0	
Uncontested	Granted	31	100.0%
	Denied	0	
Other		0	
Cases Processed		31	100.0%
Cases Pending 12/31/2012		3	

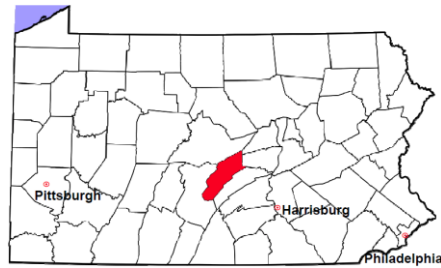
Adoptions New Cases Filed, 2008-2012



Note: Prior to 2008, each petition was counted as one new case, regardless of the number of children listed on the petition. Starting in 2008, each child listed on a petition is counted as a separate case. Therefore, statistics since 2008 should not be compared to statistics prior to 2008.

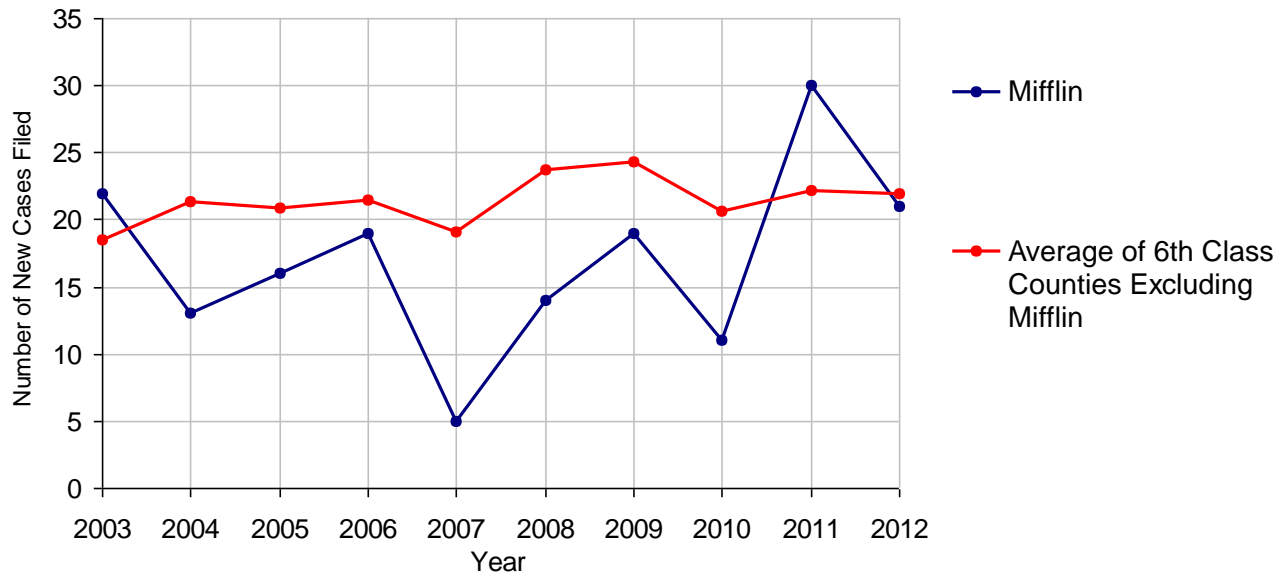
Mifflin County

2012 Population Estimate: 46,773
 Class of County: 6th
 No. of Common Pleas Court Judgeships: 2



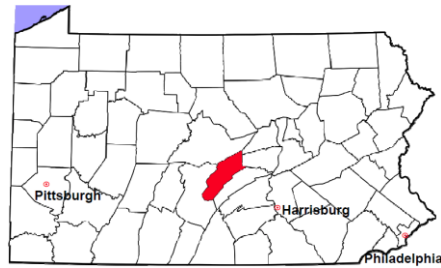
2012 Relinquishments/Terminations	No. of Cases	
Cases Pending 1/1/2012	4	
New Cases Filed in 2012	21	
Cases Available for Processing	25	
Processed By:		
Contested before a Judge	6	27.3%
Uncontested	16	72.7%
Other	0	
Cases Processed	22	100.0%
Cases Pending 12/31/2012	3	

Relinquishments/Terminations New Cases Filed, 2003-2012



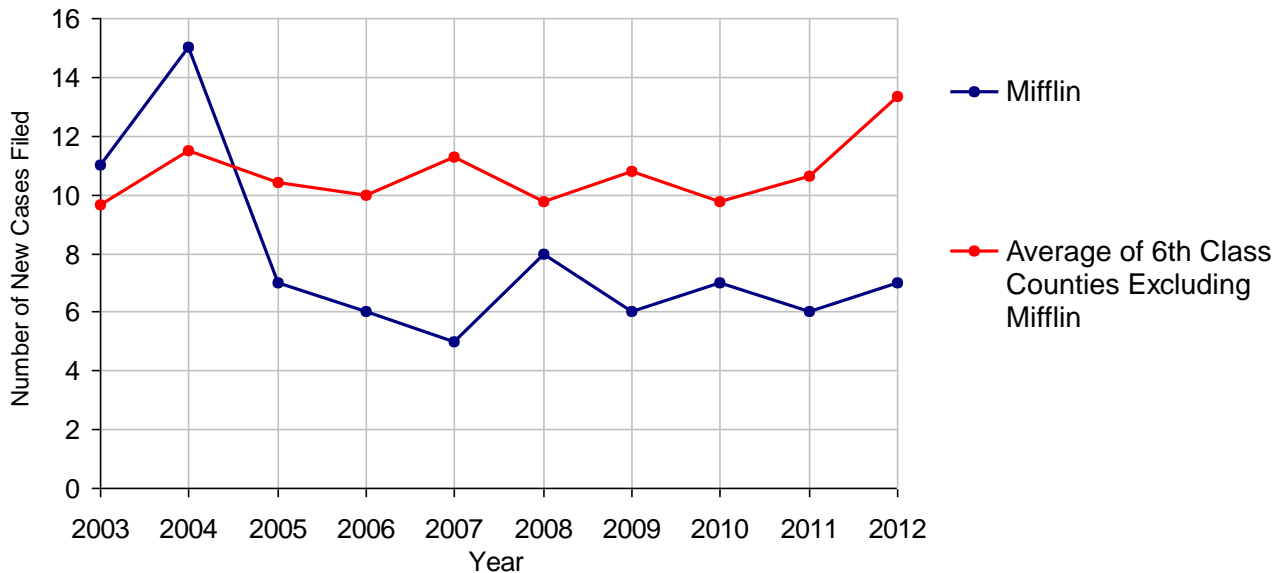
Mifflin County

2012 Population Estimate: 46,773
 Class of County: 6th
 No. of Common Pleas Court Judgeships: 2



2012 Appointment of Guardians	No. of Cases
Cases Pending 1/1/2012	3
New Cases Filed in 2012	7
Cases Available for Processing	10
Processed By:	
Contested before a Judge	1 12.5%
Uncontested	7 87.5%
Other	0
Cases Processed	8 100.0%
Cases Pending 12/31/2012	2

Appointment of Guardians New Cases Filed, 2003-2012



Mifflin County

2012 Population Estimate: 46,773
 Class of County: 6th
 No. of Common Pleas Court Judgeships: 2



2012 Jury Yield and Utilization

Jury Yield

Qualification Questionnaires/Summonses Mailed:	914	A		
Returned Undeliverable:	6	B	0.7%	Of Qualification Questionnaires/Summonses Mailed
Not Responded to:	34	C	3.7%	
the Number of Prospective Jurors:				
Disqualified:	25	D	2.7%	
Exempted:	7	E	0.8%	
Excused:	139	F	15.2%	
Deferred to New Term:	118	G	12.9%	
Deferred from Previous Term:	126	H	13.8%	
Total Number of Qualified Jurors Available for Service:	711	I	77.8%	

I=A-B-C-D-E-F-G+H

Jury Utilization

the Number of Jurors:				
Reporting for Service:	367		51.6%	Of Jurors Qualified and Available
Told Not to Report for Service:	234		32.9%	
Sent to Courtroom for Jury Selection (Voir Dire):	281		76.6%	Of Jurors Reporting for Service
Impanelled or Sworn (jurors/alternates):	110		30.0%	
Removed for Cause/Hardship:	55			
Removed by Peremptory Challenge:	112			

Jury Costs

Total Annual Budget for Juror Operations:	\$35,368.00	J
Average Cost Per Juror:	\$38.70	K

K=J/A

In mid-2011, AOPC began utilizing the National Center for State Courts' Jury Managers' Toolbox for collecting jury data. In 2012, the counties began providing additional jury data which included information about the summoning practices in the counties. With this additional data, we can now see not only how many citizens come to our courthouses every day in anticipation of serving on a jury, but the number of citizens actually summoned and the number of those summonsed who are exempt, excused or disqualified from service. With this wider view of the jury process, we can determine the efficiency with which our courts operate, and with the assistance of the Jury Managers' Toolbox find guidance in streamlining the jury summoning practices.