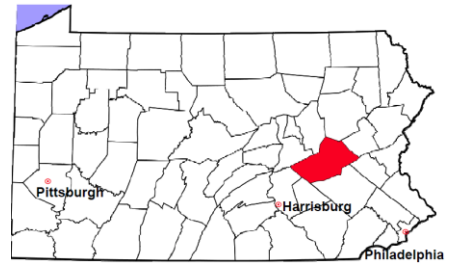


# Schuylkill County

2012 Population Estimate: 147,063  
 Class of County: 4th  
 No. of Common Pleas Court Judgeships: 6



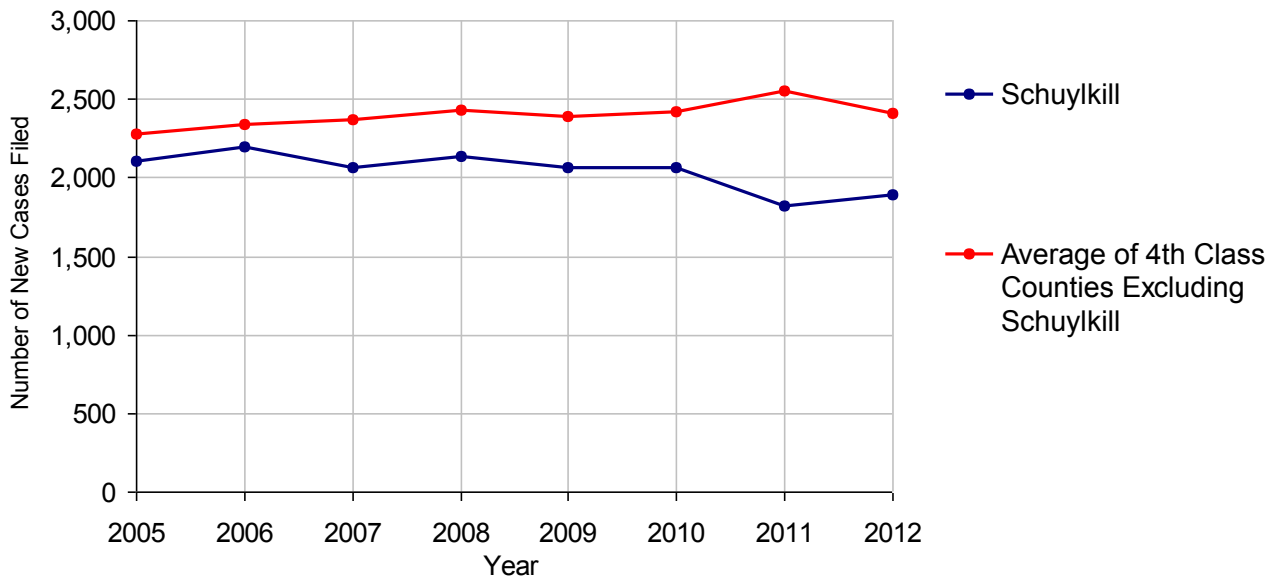
<b>2012 Criminal</b>	<b>No. of Cases</b>
Cases Pending 1/1/2012	1,086
New Cases Filed in 2012	1,888
Reopened Cases	95
<b>Cases Available for Disposition</b>	<b>3,069</b>
<b>Disposed by:</b>	
Withdrawn/Dismissed	192 9.8%
ARD	345 17.7%
Guilty Plea	1,270 65.1%
Non-Jury Trial	10 0.5%
Jury Trial	43 2.2%
Inactive	68 3.5%
Other	23 1.2%
<b>Total Cases Disposed</b>	<b>1,951 100.0%</b>
<b>Cases Pending 12/31/2012</b>	<b>1,118</b>
Cases Awaiting Sentencing	28



<b>Age of Pending Cases as of 12/31/2012</b>		
0-60 Days	300	26.8%
61-120 Days	305	27.3%
121-180 Days	222	19.9%
181-240 Days	136	12.2%
241-300 Days	62	5.5%
301-360 Days	36	3.2%
Over 360 Days	57	5.1%
<b>Total</b>	<b>1,118</b>	<b>100.0%</b>

Data provided by CPCMS

**Criminal New Cases Filed, 2005-2012**

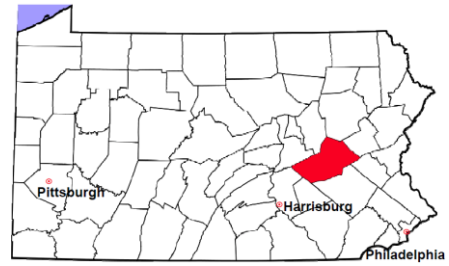


# Schuylkill County

2012 Population Estimate: 147,063

Class of County: 4th

No. of Common Pleas Court Judgeships: 6



## 2012 Criminal - New Cases by Case Type

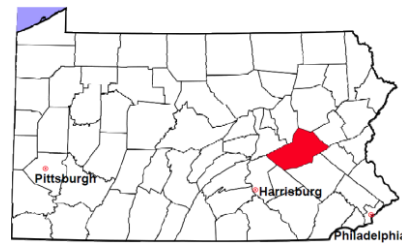


Case Type	Felony	Misdemeanor	Summary /Ungraded	Total
Person	108	198	0	306
Property	248	346	1	595
Drug	169	201	0	370
Weapon	7	7	0	14
Public Order	24	147	2	173
Motor Vehicle - DWI/DUI	0	425	0	425
Motor Vehicle - Other	0	5	0	5
Other	0	0	0	0
<b>Total</b>	<b>556</b>	<b>1,329</b>	<b>3</b>	<b>1,888</b>
	<b>29.4%</b>	<b>70.4%</b>	<b>0.2%</b>	<b>100.0%</b>

Data provided by CPCMS

# Schuylkill County

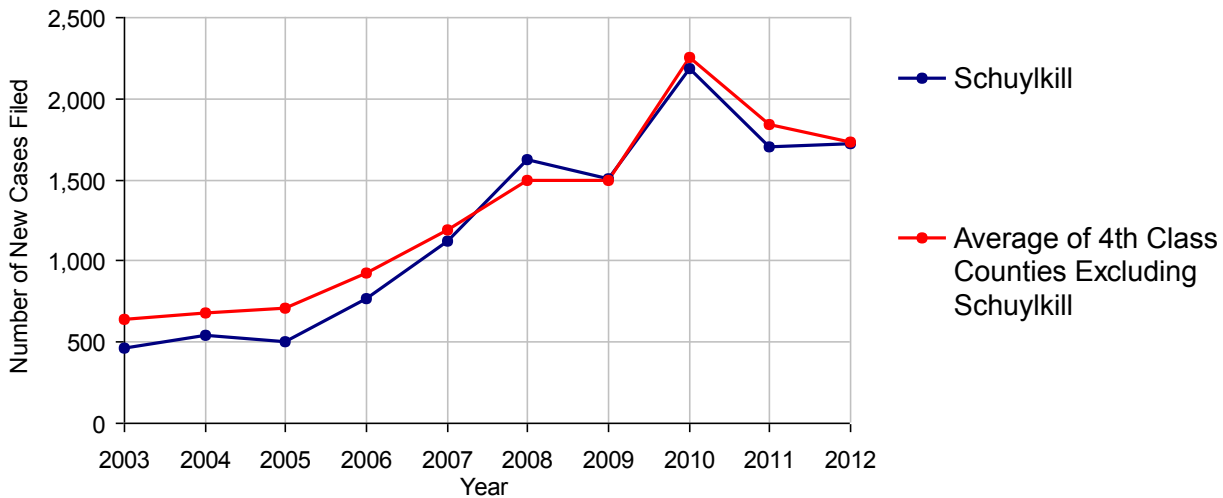
2012 Population Estimate: 147,063  
 Class of County: 4th  
 No. of Common Pleas Court Judgeships: 6



2012 Civil	Civil Action	Other	Total
Cases Pending 1/1/2012	2,914	1,986	4,900
Docketed Cases	1,039	680	1,719
Arbitration Appeals	0	0	0
Transferred In	1	0	1
Returned to Active	9	3	12
<b>Cases Available for Processing</b>	<b>3,963</b>	<b>2,669</b>	<b>6,632</b>
Disposed By:			
Default Judgments	862	309	1,171
Cases Decided by Arbitration Board	70	26	96
Dispositive Motions	96	158	254
Settlements	451	215	666
Moved to Inactive Status	261	144	405
Transferred/Withdrawn	79	17	96
Administrative Purge	179	81	260
Other	112	56	168
Jury Trial	7	0	7
Non-Jury Trial	1	9	10
<b>Total Cases Disposed</b>	<b>2,118</b>	<b>1,015</b>	<b>3,133</b>
<b>Cases Pending 12/31/2012</b>	<b>1,845</b>	<b>1,654</b>	<b>3,499</b>

Age of Pending Cases as of 12/31/2012 (Civil Action Only)		
0-6 months	347	18.8%
7-12 months	288	15.6%
13-18 months	229	12.4%
19-24 months	208	11.3%
25-30 months	167	9.1%
31-36 months	79	4.3%
37-42 months	61	3.3%
43-48 months	66	3.6%
49-54 months	66	3.6%
55-60 months	53	2.9%
61-66 months	33	1.8%
67-72 months	35	1.9%
Over 72 months	213	11.5%
<b>Total</b>	<b>1,845</b>	<b>100.0%</b>

Docketed Cases, 2003-2012



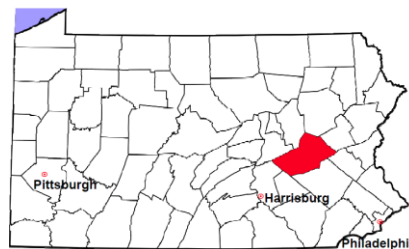
Note: Prior to June 2010, docketed cases under the "Other" category were not reported. The inclusion of these cases starting from June 2010 may contribute to an increase in docketed cases from 2009 to 2010.

# Schuykill County

2012 Population Estimate: 147,063

Class of County: 4th

No. of Common Pleas Court Judgeships: 6



## 2012 Civil - Docketed Cases Listed by Case Type

### TORT 303 17.6%

*(does not include mass tort)*

Intentional	11
Malicious Prosecution	2
Motor Vehicle	102
Nuisance	2
Premise Liability	28
Product Liability	7
Slander/Libel/Defamation	3
Other	148

### MASS TORT 2 0.1%

Asbestos	0
Tobacco	0
Toxic Tort - DES	0
Toxic Tort - Implant	0
Toxic Waste	0
Other	2

### PROFESSIONAL LIABILITY 24 1.4%

Dental	2
Legal	4
Medical Malpractice	14
Other	4

### CONTRACT 682 39.7%

*(does not include judgments)*

Buyer Plaintiff	14
Debt Collection: Credit Card	358
Debt Collection: Other	196
Employment Dispute:	
Employment Dispute: Discriminatio	0
Employment Dispute: Other	4
Other	110

### REAL PROPERTY 535 31.1%

Ejectment*	36
Eminent Domain/Condemnation	58
Ground Rent	0
Landlord/Tenant Dispute	28
Mortgage Foreclosure:	
Residential*	378
Commercial*	11
Partition of Real Property*	2
Quiet Title*	14
Other*	8

### CIVIL APPEALS 118 6.9%

*- Administrative Agencies*

Board of Assessment*	58
Board of Elections*	0
Dept. of Transportation*	42
Zoning Board*	6
Statutory Appeal - Other*	3
Other*	9

### MISCELLANEOUS 55 3.2%

Common Law/	
Statutory Arbitration*	1
Declaratory Judgment*	5
Mandamus*	3
Non-Domestic Relations	
Restraining Order*	1
Quo Warranto*	0
Replevin*	6
Other*	39

### TOTAL DOCKETED CASES: 1,719 100%

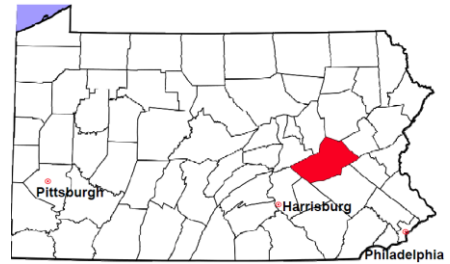
#### Of the Docketed Cases:

Pro Se Filings:	35	2.0%	Class Action Suits:	0	MDJ Appeals:	102	5.9%
-----------------	----	------	---------------------	---	--------------	-----	------

\* Civil Other

# Schuylkill County

2012 Population Estimate: 147,063  
 Class of County: 4th  
 No. of Common Pleas Court Judgeships: 6



## 2012 Protection From Abuse

**No. of  
Petitions**

Cases Pending 1/1/2012 27  
 New Cases Filed in 2012 486

*Of these, Petitions Requesting Temporary Orders: 486 (100.0%)  
 Temporary Orders DENIED: 51 (10.5%), Temporary Orders GRANTED: 435 (89.5%)*

**Cases Available for Processing 513**

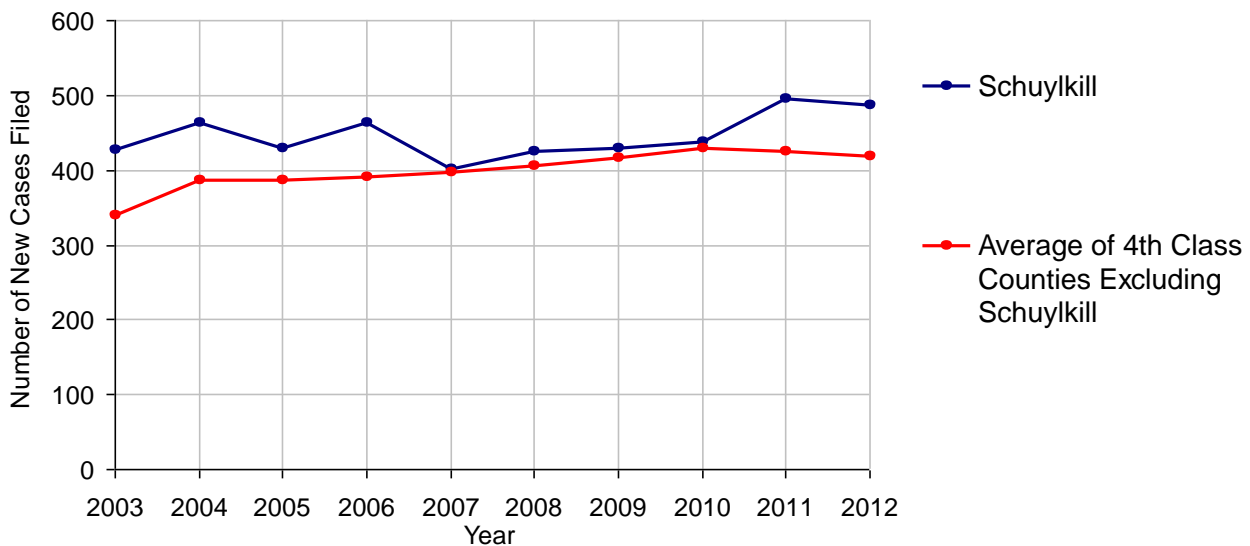
Processed By:

Temporary Order DENIED After Ex Parte Hearing and No Evidentiary Hearing Scheduled	35	7.3%
Temporary Order DISMISSED After Evidentiary Hearing and No Final Order Entered	35	7.3%
Final Order DENIED After Evidentiary Hearing Before a Judge	7	1.5%
Final Order GRANTED After Evidentiary Hearing Before a Judge	105	22.0%
Plaintiff Did Not Appear For Evidentiary Hearing	84	17.6%
Final Order by STIPULATION OR AGREEMENT Between the Parties	112	23.5%
Petition WITHDRAWN by Plaintiff	99	20.8%
TRANSFERRED to Another Jurisdiction	0	
DECEASED Party	0	
Other	0	

**Cases Processed 477 100.0%**

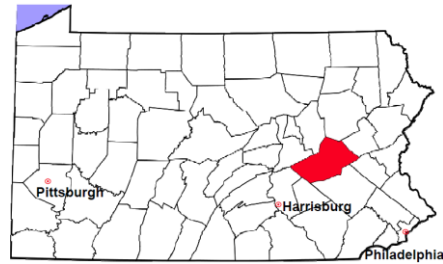
**Cases Pending 12/31/2012 36**

**PFA New Cases Filed, 2003-2012**



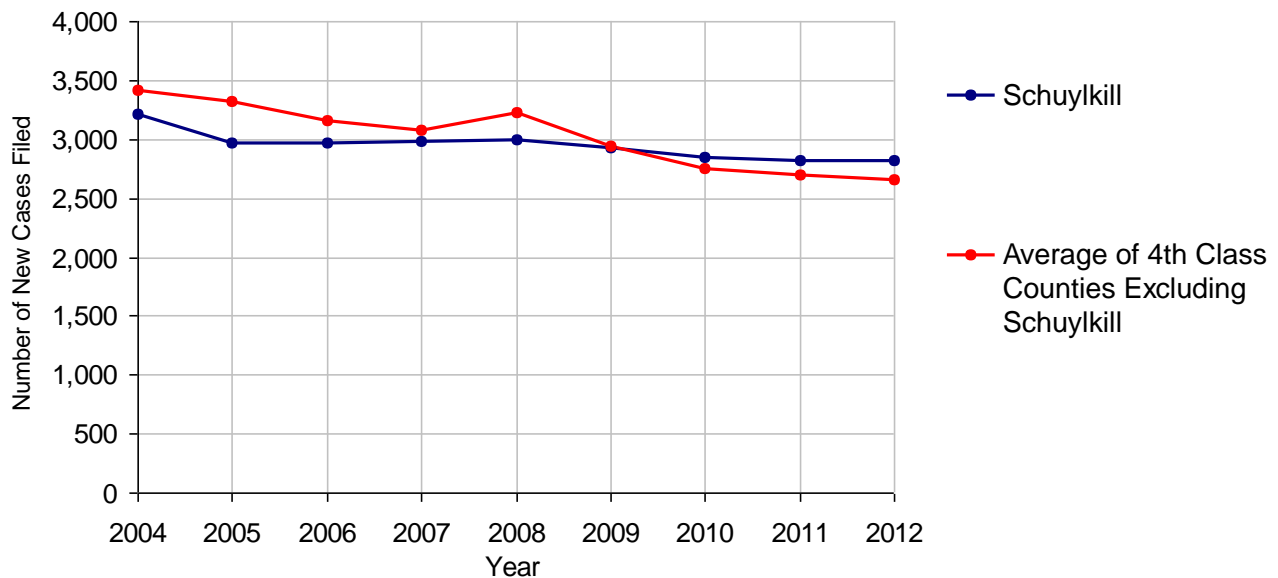
# Schuylkill County

2012 Population Estimate: 147,063  
 Class of County: 4th  
 No. of Common Pleas Court Judgeships: 6



<b>2012 Spousal &amp; Child Support</b>	<b>No. of Petitions</b>	
Cases Pending 1/1/2012	567	
New Cases Filed in 2012	2,814	
Dockets Transferred In (+)	48	
Dockets Transferred Out (-)	35	
<b>Cases Available for Processing</b>	<b>3,394</b>	
Processed By:		
Judge	0	
Intake Officer	2,984	97.5%
Hearing Officer	75	2.5%
Other	0	
<b>Cases Processed</b>	<b>3,059</b>	<b>100.0%</b>
<b>Cases Pending 12/31/2012</b>	<b>335</b>	

**Spousal & Child Support New Cases Filed, 2004-2012**

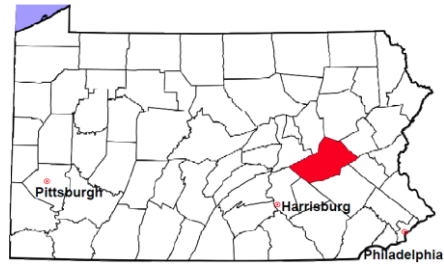


# Schuykill County

2012 Population Estimate: 147,063

Class of County: 4th

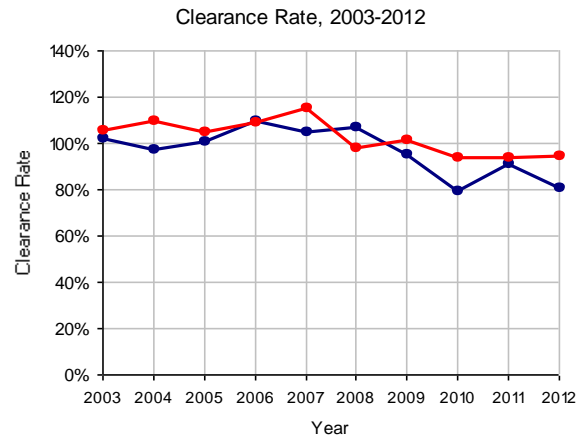
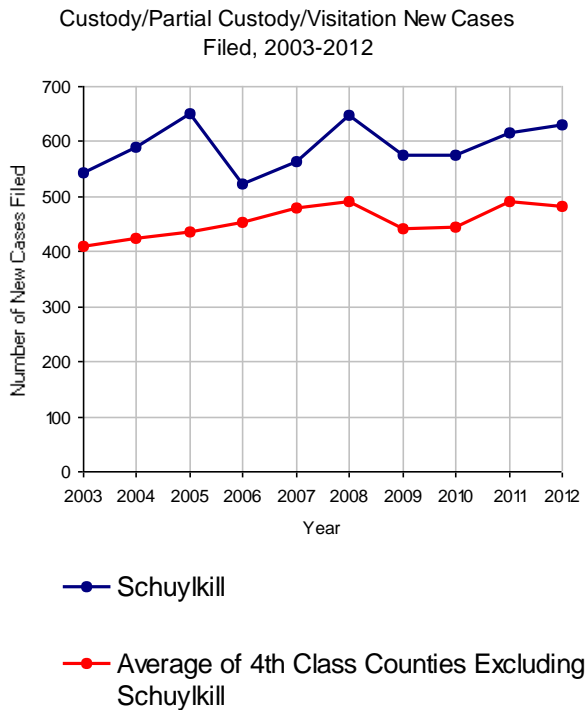
No. of Common Pleas Court Judgeships: 6



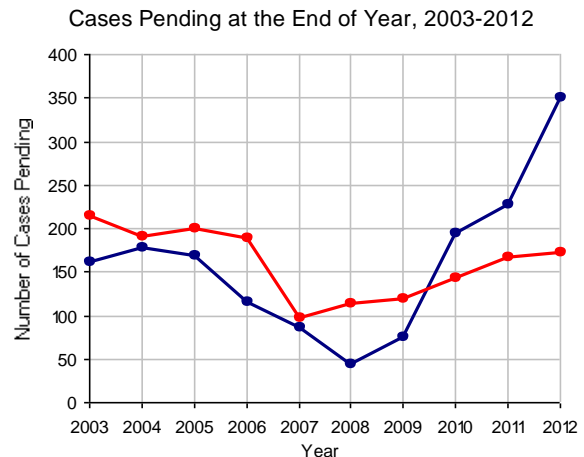
## 2012 Custody/Partial Custody/Visitation

No. of Petitions

Cases Pending 1/1/2012	228
New Cases Filed in 2012	630
<b>Cases Available for Processing</b>	<b>858</b>
Processed By:	
Judge	191 37.6%
Non-Judicial Officer	317 62.4%
Other	0
<b>Cases Processed</b>	<b>508 100.0%</b>
<b>Cases Pending 12/31/2012</b>	<b>350</b>

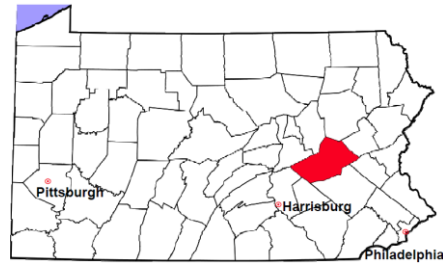


Note: Clearance Rate = Cases Processed / New Cases Filed



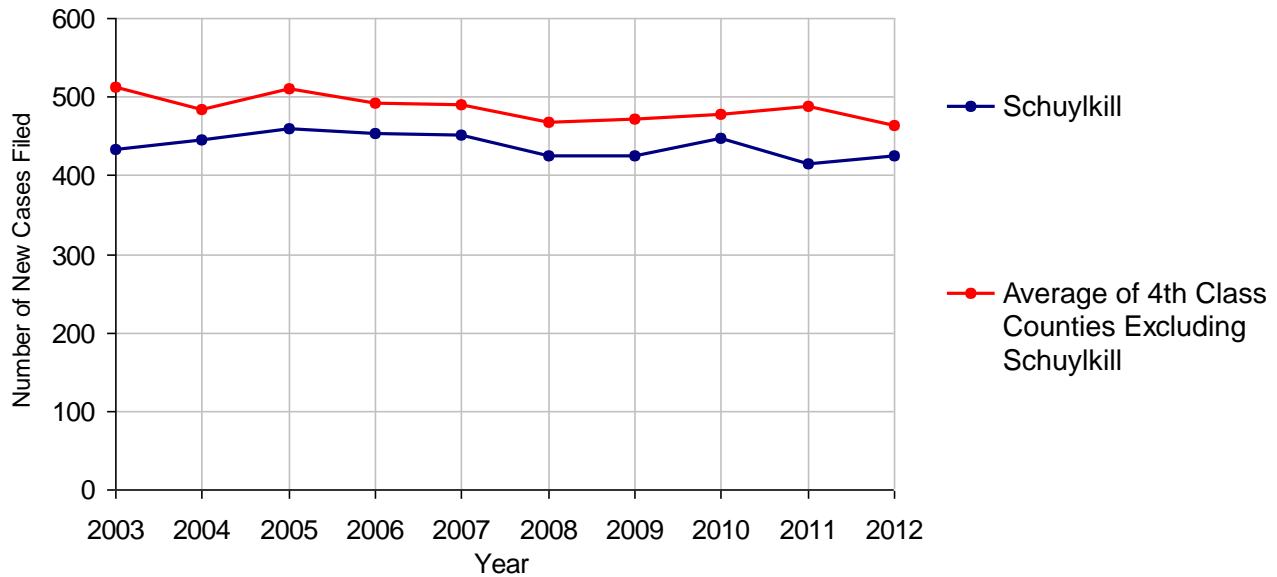
# Schuylkill County

2012 Population Estimate: 147,063  
 Class of County: 4th  
 No. of Common Pleas Court Judgeships: 6



<b>2012 Divorce</b>	<b>No. of Petitions</b>	
Cases Pending 1/1/2012	846	
New Cases Filed in 2012	425	
<b>Cases Available for Processing</b>	<b>1,271</b>	
Processed By:		
Contested Before a Judge	0	
Contested Before a Master	29	6.9%
Uncontested	337	79.9%
Other	56	13.3%
<b>Cases Processed</b>	<b>422</b>	<b>100.0%</b>
<b>Cases Pending 12/31/2012</b>	<b>849</b>	

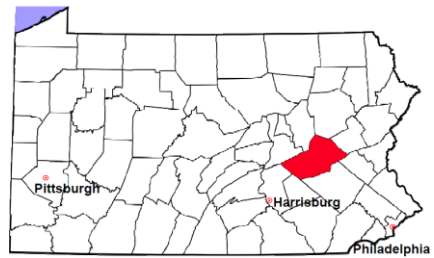
**Divorce New Cases Filed, 2003-2012**





# Schuylkill County

2012 Population Estimate: 147,063  
 Class of County: 4th  
 No. of Common Pleas Court Judgeships: 6



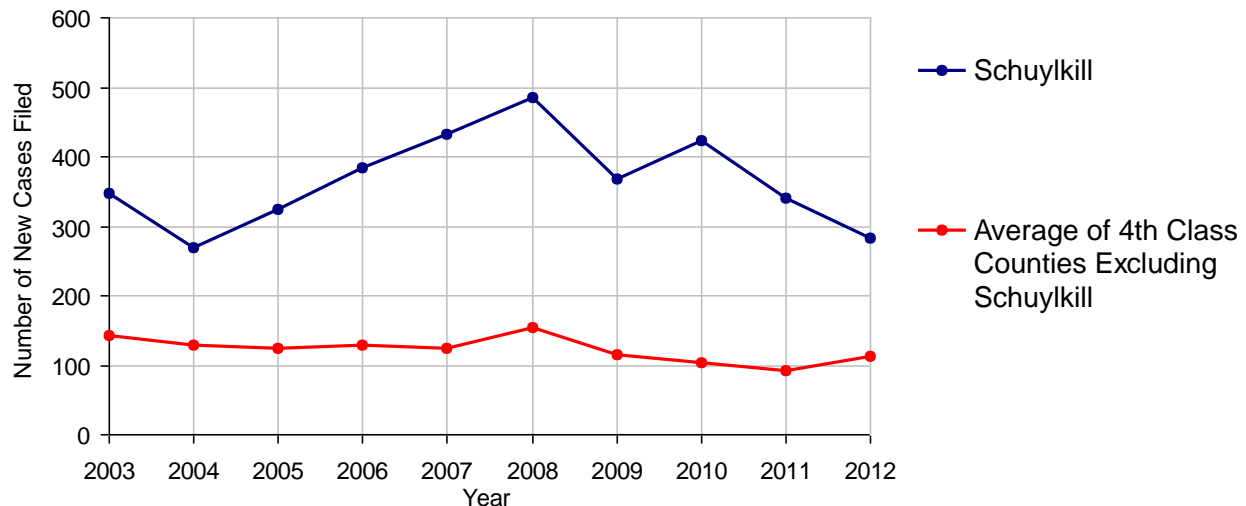
## 2012 Juvenile Dependency - Active Dependent Inventory



	Abuse/ Neglect	Status Offenses	Total
Cases Pending 1/1/2012	19	0	19
New Petitions Filed in 2012	270	13	283
Other	0	0	0
<b>Total Petitions Available for Processing</b>	<b>289</b>	<b>13</b>	<b>302</b>
Processed by:			
Adjudicated Dependent			
Judge	218	5	223
Master	0	0	0
Adjudicated NOT Dependent			
Judge	17	1	18
Master	0	0	0
Withdrawn/Dismissed/Inactive	44	1	45
Other	0	0	0
<b>Total Petitions Processed</b>	<b>279</b>	<b>7</b>	<b>286</b>
<b>Cases Pending 12/31/2012</b>	<b>10</b>	<b>6</b>	<b>16</b>

Data provided by CPCMS

Abuse/Neglect and Status Offenses New Cases Filed, 2003-2012



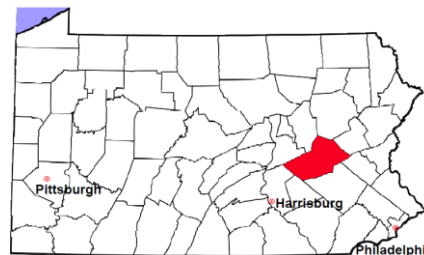
Note: Dependency data for 2002-2010 were collected manually. Dependency data for 2011 and 2012 were provided by CPCMS.

# Schuykill County

2012 Population Estimate: 147,063

Class of County: 4th

No. of Common Pleas Court Judgeships: 6



## 2012 Juvenile Dependency - Adjudicated Dependent Inventory



	Abuse/ Neglect	Status Offenses	Total
Cases Pending 1/1/2012	394	1	395
New Adjudicated Dependent Cases	218	5	223
Other	1	0	1
<b>Total Adjudicated Dependent Cases</b>	<b>613</b>	<b>6</b>	<b>619</b>

### Court Supervision Terminated:

Family Reunification	30	10.2%	0	30	10.1%
Adoption	34	11.5%	0	34	11.4%
Placement with a Relative/Guardian	196	66.4%	2	198	66.7%
Aged Out	16	5.4%	0	16	5.4%
Other Permanency Outcomes*	5	1.7%	0	5	1.7%
Other**	14	4.7%	0	14	4.7%
<b>Total Adjudicated Dependent Cases Terminated</b>	<b>295</b>	<b>100.0%</b>	<b>2</b>	<b>297</b>	<b>100.0%</b>
<b>Cases Pending 12/31/2012</b>	<b>318</b>		<b>4</b>	<b>322</b>	

Data provided by CPCMS

\* Other Permanency Outcomes include: adjudicated delinquent, death due to natural causes, death due to negligence, emancipation, permanent living arrangement, and parent has come forward.

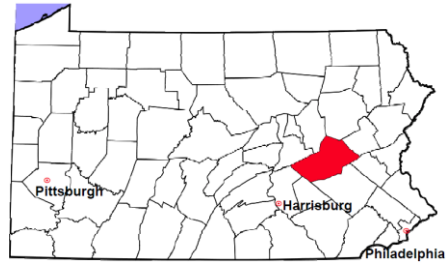
\*\* Other includes cases where court supervision is terminated due to transfer out of jurisdiction, withdrawal and administrative closure.

# Schuylkill County

2012 Population Estimate: 147,063

Class of County: 4th

No. of Common Pleas Court Judgeships: 6

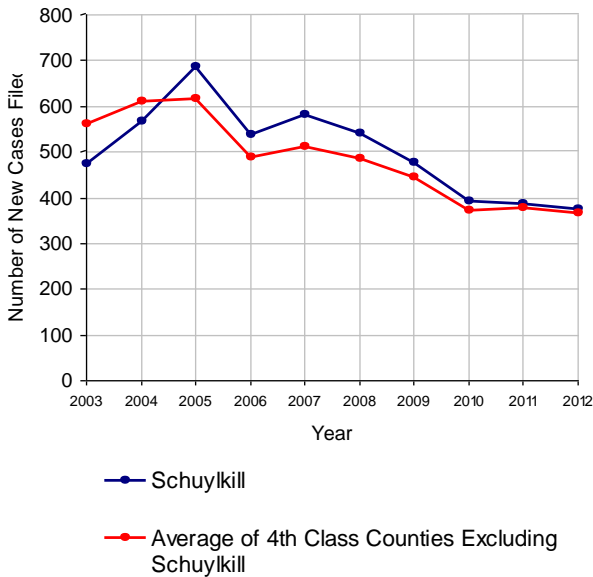


## 2012 Juvenile Delinquency

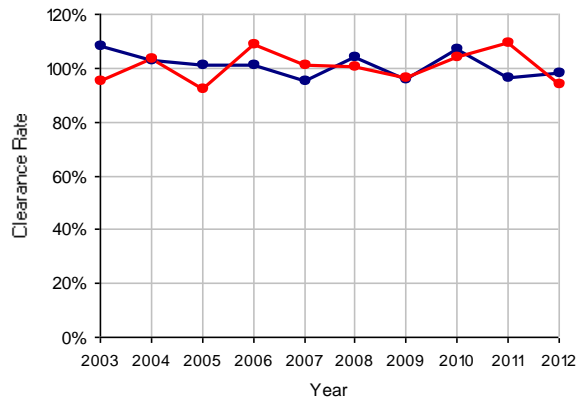
**No. of Cases**

Cases Pending 1/1/2012	50
New Cases Filed in 2012	376
<b>Cases Available for Processing</b>	<b>426</b>
Processed By:	
Judge	145 39.3%
Non-Judicial Officer	212 57.5%
Other	12 3.3%
<b>Cases Processed</b>	<b>369 100.0%</b>
<b>Cases Pending 12/31/2012</b>	<b>57</b>

Juvenile Delinquency New Cases Filed, 2003-2012

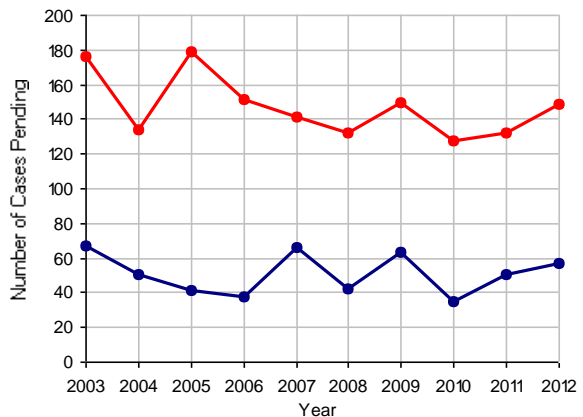


Clearance Rate, 2003-2012



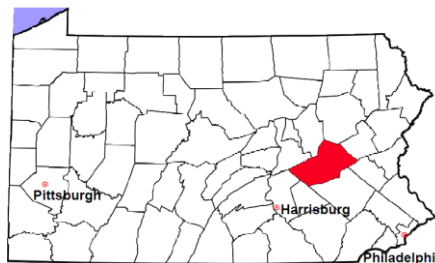
Note: Clearance Rate = Cases Processed / New Cases Filed

Cases Pending at the End of Year, 2003-2012



# Schuylkill County

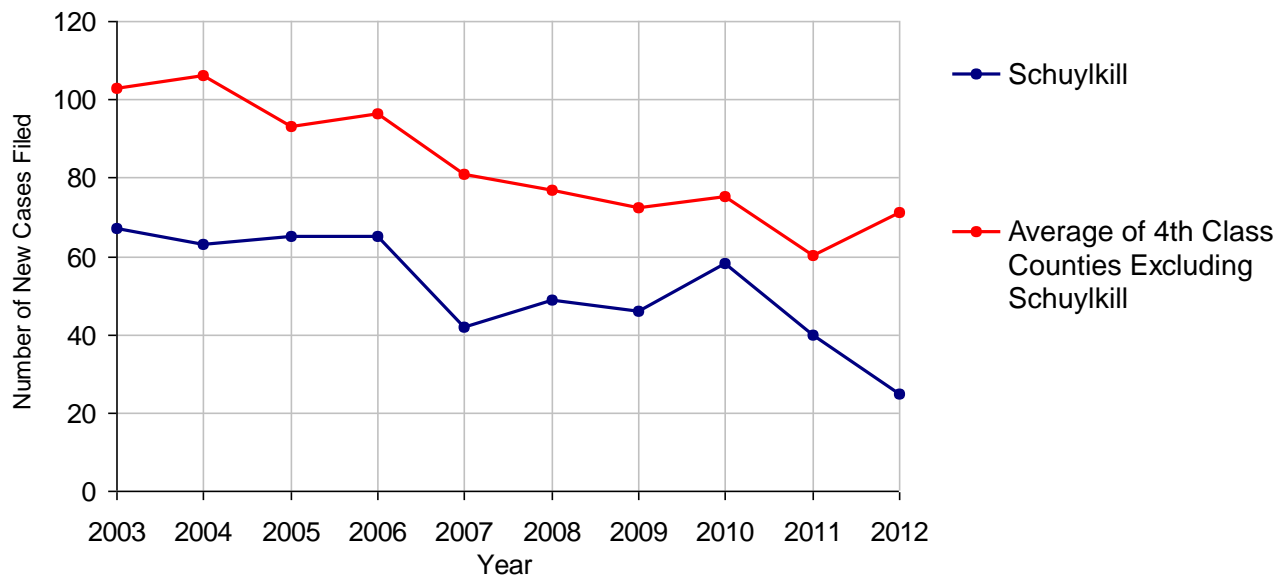
2012 Population Estimate: 147,063  
 Class of County: 4th  
 No. of Common Pleas Court Judgeships: 6



## 2012 Accounts

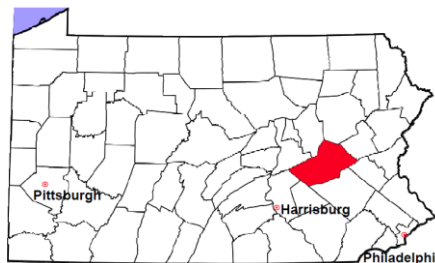
	No. of Cases	
Cases Pending 1/1/2012	6	
New Cases Filed in 2012	25	
<b>Cases Available for Processing</b>	<b>31</b>	
Processed By:		
Contested before a Judge	1	4.3%
Contested before a Non-judicial Officer	0	
Uncontested	16	69.6%
Other	6	26.1%
<b>Cases Processed</b>	<b>23</b>	<b>100.0%</b>
<b>Cases Pending 12/31/2012</b>	<b>8</b>	

Accounts New Cases Filed, 2003-2012



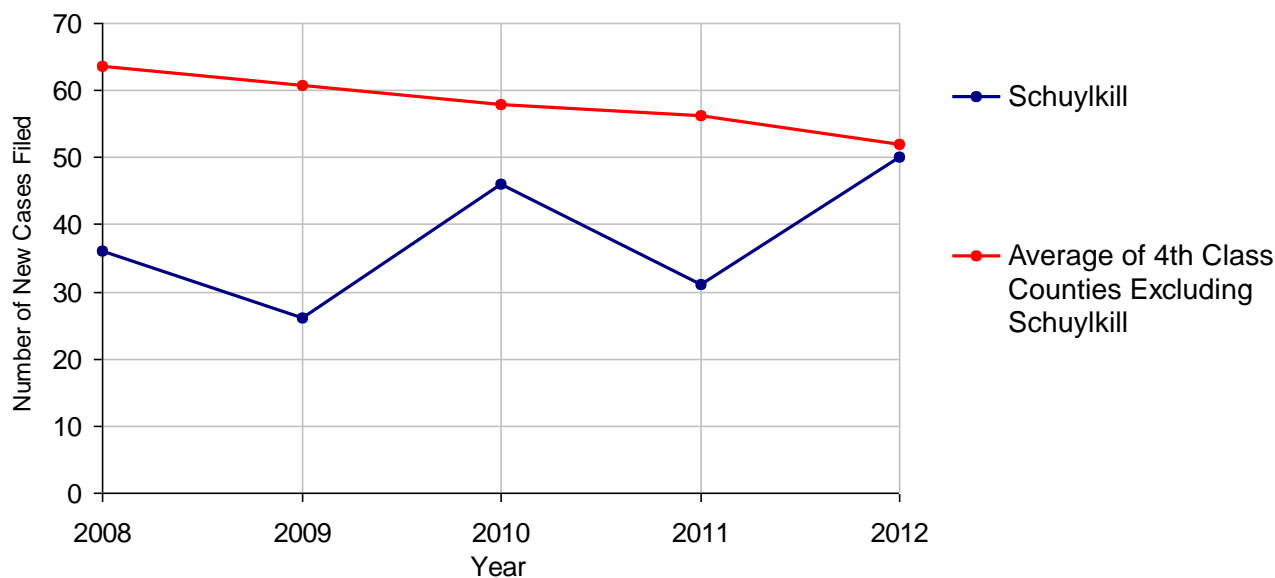
# Schuylkill County

2012 Population Estimate: 147,063  
 Class of County: 4th  
 No. of Common Pleas Court Judgeships: 6



<b>2012 Adoptions</b>		<b>No. of Cases</b>	
Cases Pending 1/1/2012		6	
New Cases Filed in 2012		50	
<b>Cases Available for Processing</b>		<b>56</b>	
Processed By:			
Contested before a Judge	Granted	0	
	Denied	0	
Uncontested	Granted	39	83.0%
	Denied	0	
Other		8	17.0%
<b>Cases Processed</b>		<b>47</b>	<b>100.0%</b>
<b>Cases Pending 12/31/2012</b>		<b>9</b>	

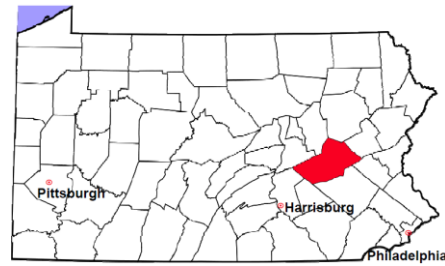
**Adoptions New Cases Filed, 2008-2012**



Note: Prior to 2008, each petition was counted as one new case, regardless of the number of children listed on the petition. Starting in 2008, each child listed on a petition is counted as a separate case. Therefore, statistics since 2008 should not be compared to statistics prior to 2008.

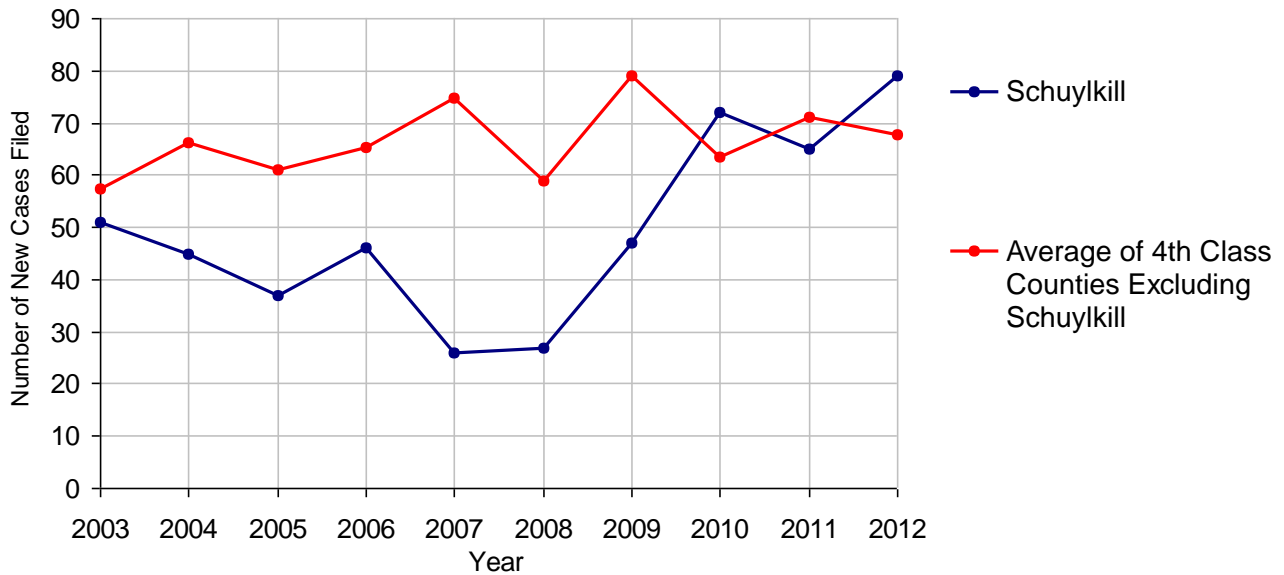
# Schuylkill County

2012 Population Estimate: 147,063  
 Class of County: 4th  
 No. of Common Pleas Court Judgeships: 6



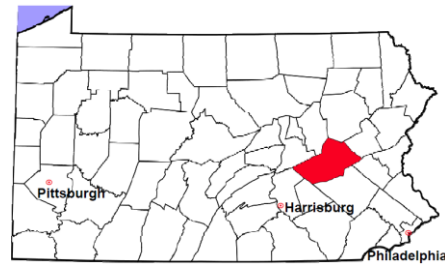
2012 Relinquishments/Terminations		No. of Cases
Cases Pending 1/1/2012		12
New Cases Filed in 2012		79
<b>Cases Available for Processing</b>		<b>91</b>
Processed By:		
Contested before a Judge	9	10.7%
Uncontested	69	82.1%
Other	6	7.1%
<b>Cases Processed</b>	<b>84</b>	<b>100.0%</b>
<b>Cases Pending 12/31/2012</b>		<b>7</b>

Relinquishments/Terminations New Cases Filed, 2003-2012



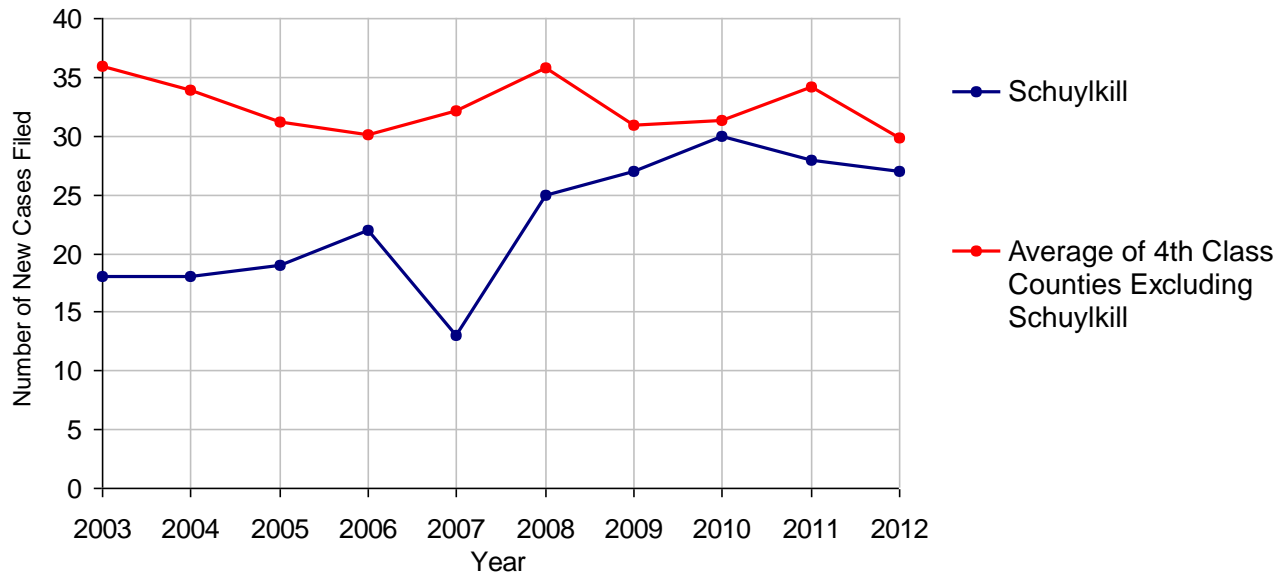
# Schuylkill County

2012 Population Estimate: 147,063  
 Class of County: 4th  
 No. of Common Pleas Court Judgeships: 6



<b>2012 Appointment of Guardians</b>		<b>No. of Cases</b>
Cases Pending 1/1/2012		5
New Cases Filed in 2012		27
<b>Cases Available for Processing</b>		<b>32</b>
Processed By:		
Contested before a Judge	3	13.0%
Uncontested	19	82.6%
Other	1	4.3%
<b>Cases Processed</b>	<b>23</b>	<b>100.0%</b>
<b>Cases Pending 12/31/2012</b>		<b>9</b>

**Appointment of Guardians New Cases Filed, 2003-2012**



# Schuykill County

2012 Population Estimate: 147,063  
 Class of County: 4th  
 No. of Common Pleas Court Judgeships: 6



## 2012 Jury Yield and Utilization

### Jury Yield

Qualification Questionnaires/Summonses Mailed:	12,679	A		
Returned Undeliverable:	1,808	B	14.3%	Of Qualification Questionnaires/Summonses Mailed
Not Responded to:	722	C	5.7%	
the Number of Prospective Jurors:				
Disqualified:	3,631	D	28.6%	
Exempted:	652	E	5.1%	
Excused:	2,711	F	21.4%	
Deferred to New Term:	430	G	3.4%	
Deferred from Previous Term:	184	H	1.5%	
<b>Total Number of Qualified Jurors Available for Service:</b>	<b>2,909</b>	<b>I</b>	<b>22.9%</b>	

*I=A-B-C-D-E-F-G+H*

### Jury Utilization

the Number of Jurors:				
Reporting for Service:	2,341		80.5%	Of Jurors Qualified and Available
Told Not to Report for Service:	454		15.6%	
Sent to Courtroom for Jury Selection (Voir Dire):	2,901		123.9%	Of Jurors Reporting for Service
Impanelled or Sworn (jurors/alternates):	882		37.7%	
Removed for Cause/Hardship:	38			
Removed by Peremptory Challenge:	37			

### Jury Costs

Total Annual Budget for Juror Operations:	\$66,721.00	J
Average Cost Per Juror:	\$5.26	K

*K=J/A*

In mid-2011, AOPC began utilizing the National Center for State Courts' Jury Managers' Toolbox for collecting jury data. In 2012, the counties began providing additional jury data which included information about the summoning practices in the counties. With this additional data, we can now see not only how many citizens come to our courthouses every day in anticipation of serving on a jury, but the number of citizens actually summonsed and the number of those summonsed who are exempt, excused or disqualified from service. With this wider view of the jury process, we can determine the efficiency with which our courts operate, and with the assistance of the Jury Managers' Toolbox find guidance in streamlining the jury summoning practices.