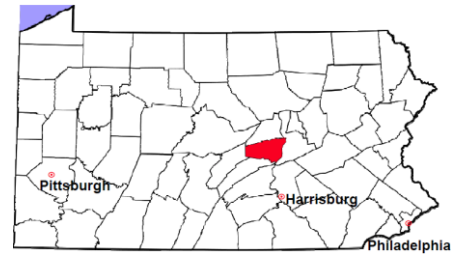


Snyder County

2011 Population Estimate: 39,819
 Class of County: 7th
 No. of Common Pleas Court Judgeships: 2
 (Snyder and Union combined)



2011 Criminal No. of Cases

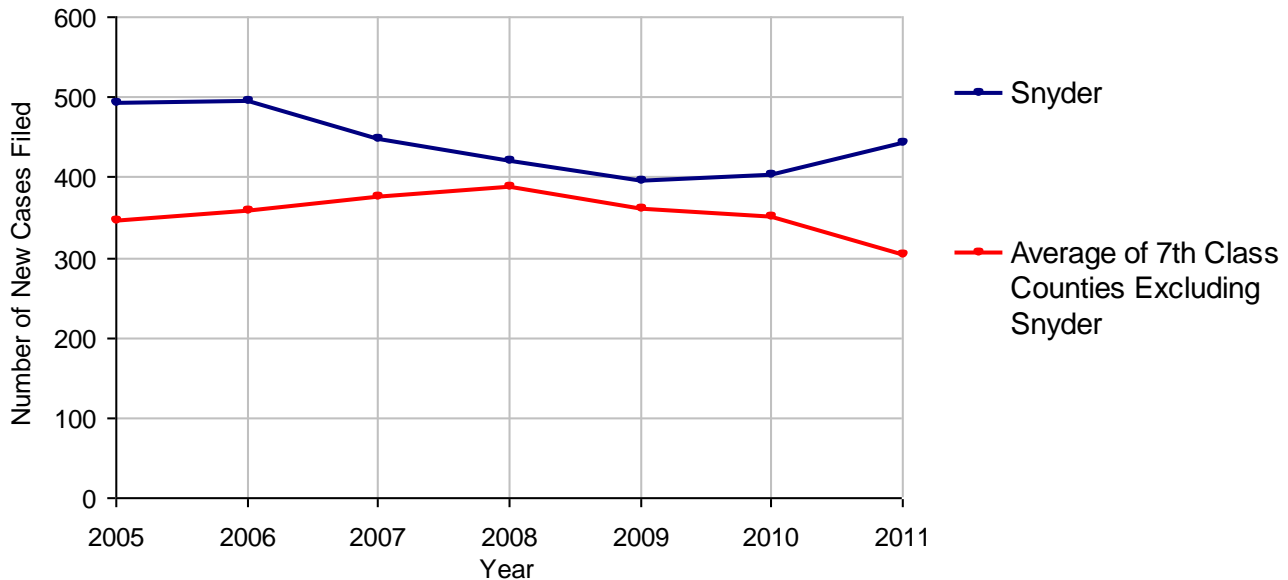
Cases Pending 1/1/2011	236	
New Cases Filed in 2011	444	
Reopened Cases	21	
Cases Available for Disposition	701	
Disposed by:		
Withdrawn/Dismissed	19	4.5%
ARD	90	21.3%
Guilty Plea	274	64.8%
Non-Jury Trial	3	0.7%
Jury Trial	7	1.7%
Inactive	14	3.3%
Other	16	3.8%
Total Cases Disposed	423	100.0%
Cases Pending 12/31/2011	278	
Cases Awaiting Sentencing	12	



Age of Pending Cases as of 12/31/2011		
0-60 Days	92	33.1%
61-120 Days	80	28.8%
121-180 Days	52	18.7%
181-240 Days	10	3.6%
241-300 Days	25	9.0%
301-360 Days	3	1.1%
Over 360 Days	16	5.8%
Total	278	100.0%

Data provided by CPCMS

Criminal New Cases Filed, 2005-2011

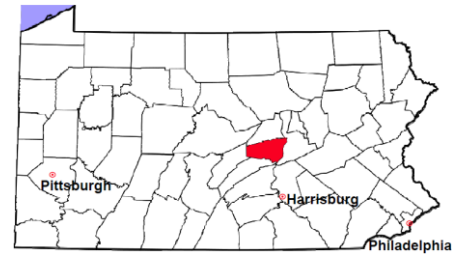


Snyder County

2011 Population Estimate: 39,819

Class of County: 7th

No. of Common Pleas Court Judgeships: 2
(Snyder and Union combined)



2011 Criminal - New Cases by Case Type

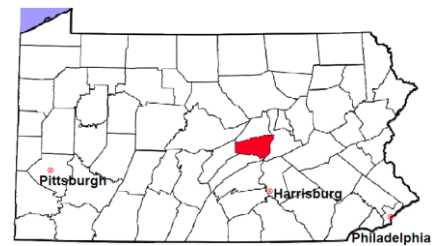


Case Type	Felony	Misdemeanor	Summary /Ungraded	Total
Person	17	34	0	51
Property	65	82	0	147
Drug	21	39	0	60
Weapon	0	1	0	1
Public Order	9	37	0	46
Motor Vehicle - DWI/DUI	0	133	0	133
Motor Vehicle - Other	1	4	1	6
Other	0	0	0	0
Total	113	330	1	444
	25.5%	74.3%	0.2%	100.0%

Data provided by CPCMS

Snyder County

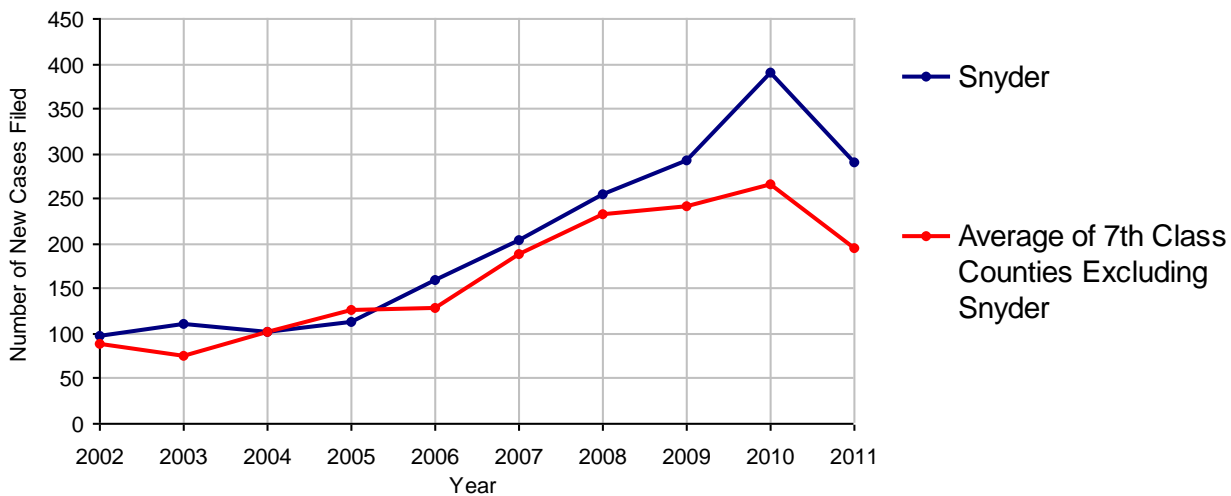
2011 Population Estimate: 39,819
 Class of County: 7th
 No. of Common Pleas Court Judgeships: 2
 (Snyder and Union combined)



2011 Civil	Civil Action	Other	Total
Cases Pending 1/1/2011	98	38	136
Docketed Cases	220	70	290
Arbitration Appeals	1	0	1
Transferred In	1	0	1
Returned to Active	0	1	1
Cases Available for Processing	320	109	429
Disposed By:			
Default Judgments	95	26	121
Cases Decided by Arbitration Board	6	0	6
Dispositive Motions	4	1	5
Settlements	67	20	87
Moved to Inactive Status	5	1	6
Transferred/Withdrawn	9	5	14
Pa.R.J.A. 1901 Administrative Purge	0	0	0
Other	5	6	11
Jury Trial	0	0	0
Non-Jury Trial	0	0	0
Total Cases Disposed	191	59	250
Cases Pending 12/31/2011	129	50	179

Age of Pending Cases as of 12/31/2011 (Civil Action Only)		
0-6 months	78	60.5%
7-12 months	32	24.8%
13-18 months	17	13.2%
19-24 months	1	0.8%
25-30 months	0	
31-36 months	0	
37-42 months	1	0.8%
43-48 months	0	
49-54 months	0	
55-60 months	0	
61-66 months	0	
67-72 months	0	
Over 72 months	0	
Total	129	100.0%

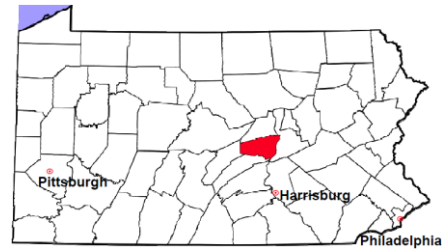
Docketed Cases, 2002-2011



Note: Prior to June 2010, docketed cases under the "Other" category were not reported. The reporting of these cases starting from June 2010 may contribute to an increase in docketed cases from 2009 to 2010.

Snyder County

2011 Population Estimate: 39,819
 Class of County: 7th
 No. of Common Pleas Court Judgeships: 2
 (Snyder and Union combined)



2011 Civil - Docketed Cases Listed by Case Type

TORT (does not include mass tort)

Intentional	0
Malicious Prosecution	0
Motor Vehicle	22
Nuisance	0
Premise Liability	8
Product Liability	0
Slander/Libel/Defamation	0
Other	3

MASS TORT

Asbestos	0
Tobacco	0
Toxic Tort - DES	0
Toxic Tort - Implant	0
Toxic Waste	0
Other	0

PROFESSIONAL LIABILITY

Dental	0
Legal	0
Medical Malpractice	0
Other	0

CONTRACT

(does not include judgments)

Buyer Plaintiff	3
Debt Collection:	
Credit Card	106
Debt Collection: Other	67
Employment Dispute:	
Discrimination	0
Employment Dispute: Other	0
Other	10

REAL PROPERTY

Ejectment*	1
Eminent Domain/ Condemnation*	1
Ground Rent	0
Landlord/Tenant Dispute	1
Mortgage Forclosures:	
Residential*	37
Commercial*	1
Partition of Real Property*	3
Quiet Title*	3
Other*	0

CIVIL APPEALS

Administrative Agencies

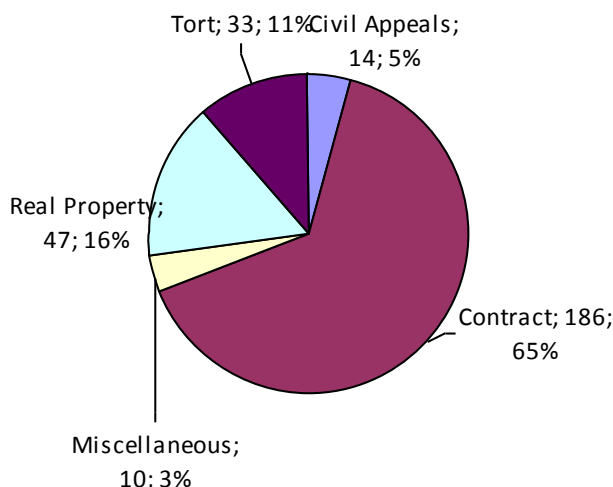
Board of Assessment*	3
Board of Elections*	0
Dept. of Transportation*	11
Zoning Board*	0
Statutory Appeal - Other*	0
Other*	0

MISCELLANEOUS

Common Law/ Statutory Arbitration*	0
Declaratory Judgment*	3
Mandamus*	0
Non-Domestic Relations Restraining Order*	0
Quo Warranto*	0
Replevin*	5
Other*	2

TOTAL DOCKETED CASES: 290

* Civil Other



Of the Docketed Cases:

Pro Se Filings:	8	2.8%
Class Action Suits:	0	
MDJ Appeals:	18	6.2%

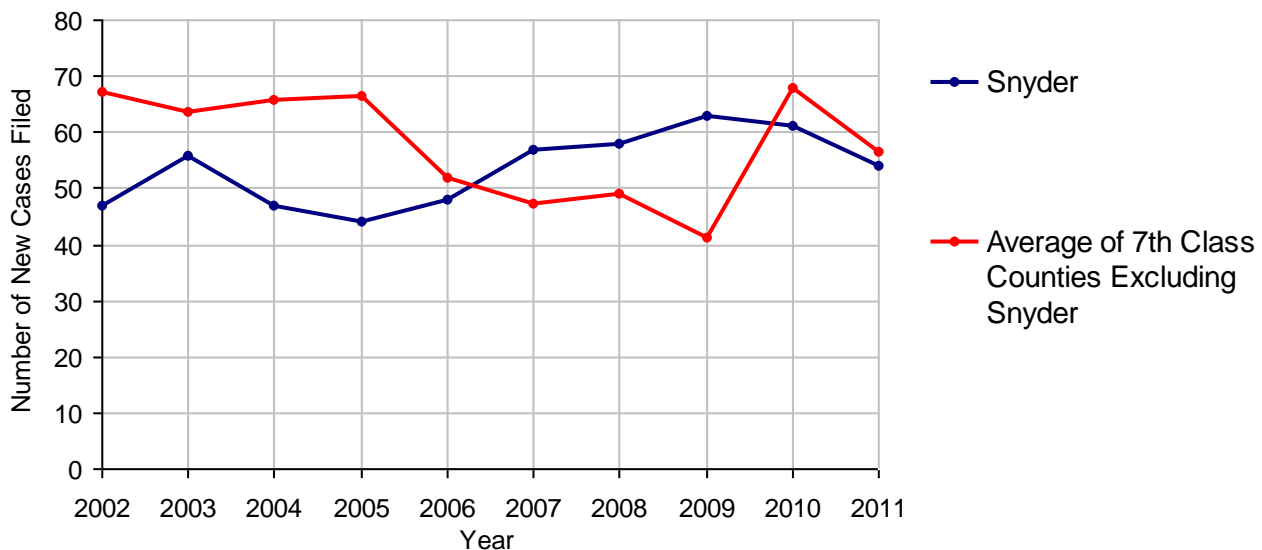
Snyder County

2011 Population Estimate: 39,819
 Class of County: 7th
 No. of Common Pleas Court Judgeships: 2
 (Snyder and Union combined)



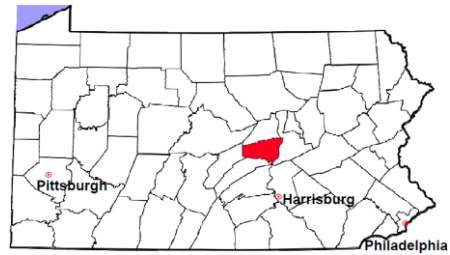
2011 Protection From Abuse	No. of Petitions
Cases Pending 1/1/2011	6
New Cases Filed in 2011	54
<i>Of these, Petitions Requesting Temporary Orders: 54 (100.0%)</i>	
<i>Temporary Orders DENIED: 9 (16.7%), Temporary Orders GRANTED: 45 (83.3%)</i>	
Cases Available for Processing	60
Processed By:	
Temporary Order DENIED After Ex Parte Hearing and No Evidentiary Hearing Scheduled	0
Temporary Order DISMISSED After Evidentiary Hearing and No Final Order Entered	8 13.8%
Final Order DENIED After Evidentiary Hearing Before a Judge	3 5.2%
Final Order GRANTED After Evidentiary Hearing Before a Judge	13 22.4%
Plaintiff Did Not Appear For Evidentiary Hearing	5 8.6%
Final Order by STIPULATION OR AGREEMENT Between the Parties	18 31.0%
Petition WITHDRAWN by Plaintiff	11 19.0%
TRANSFERRED to Another Jurisdiction	0
DECEASED Party	0
Other	0
Cases Processed	58 100.0%
Cases Pending 12/31/2011	2

PFA New Cases Filed, 2002-2011

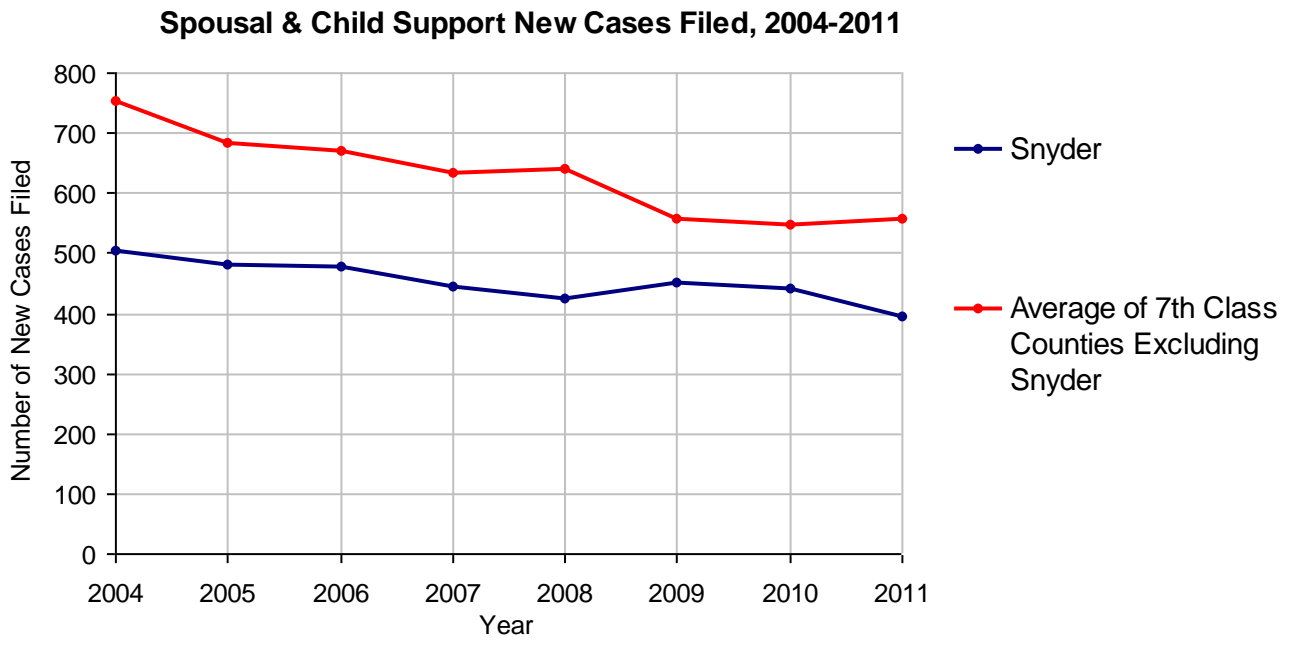


Snyder County

2011 Population Estimate: 39,819
 Class of County: 7th
 No. of Common Pleas Court Judgeships: 2
 (Snyder and Union combined)



2011 Spousal & Child Support	No. of Petitions	
Cases Pending 1/1/2011	167	
New Cases Filed in 2011	396	
Dockets Transferred In (+)	15	
Dockets Transferred Out (-)	8	
Cases Available for Processing	570	
Processed By:		
Judge	42	8.6%
Intake Officer	449	91.4%
Hearing Officer	0	
Other	0	
Cases Processed	491	100.0%
Cases Pending 12/31/2011	79	

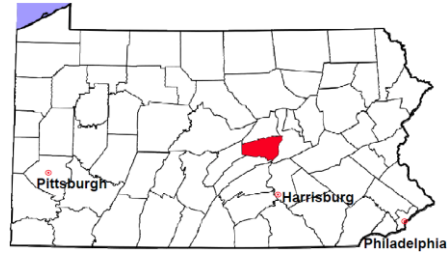


Snyder County

2011 Population Estimate: 39,819

Class of County: 7th

No. of Common Pleas Court Judgeships: 2
(Snyder and Union combined)



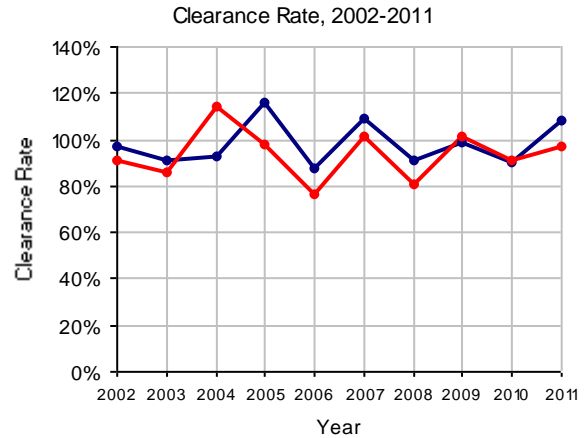
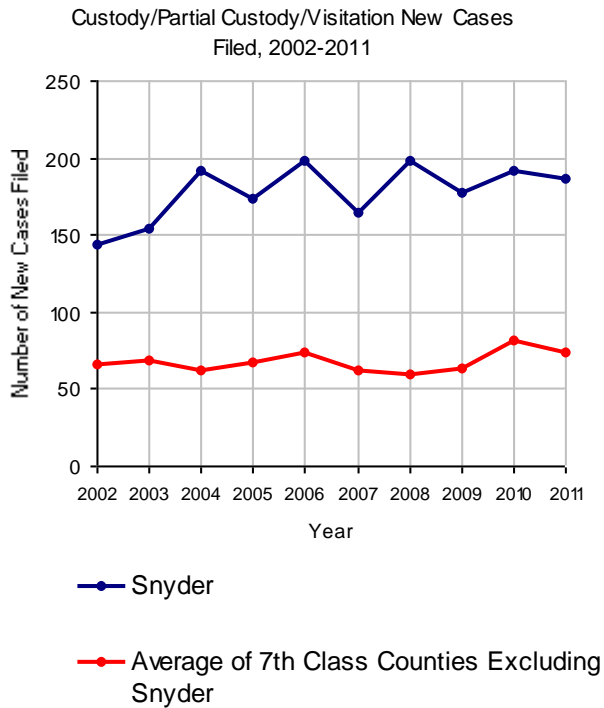
2011 Custody/Partial Custody/Visitation

No. of
Petitions

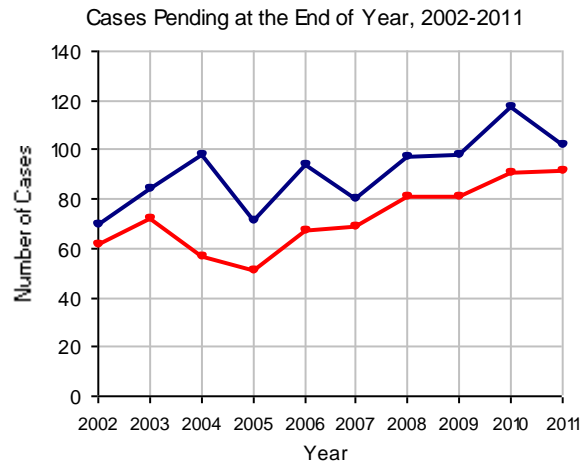
Cases Pending 1/1/2011	117
New Cases Filed in 2011	187
Cases Available for Processing	304

Processed By:

Judge	62	30.7%
Non-Judicial Officer	32	15.8%
Other	108	53.5%
Cases Processed	202	100.0%
Cases Pending 12/31/2011	102	

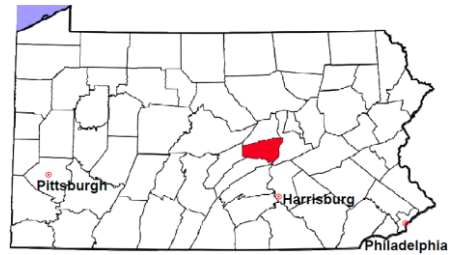


Note: Clearance Rate = Cases Processed / New Cases Filed



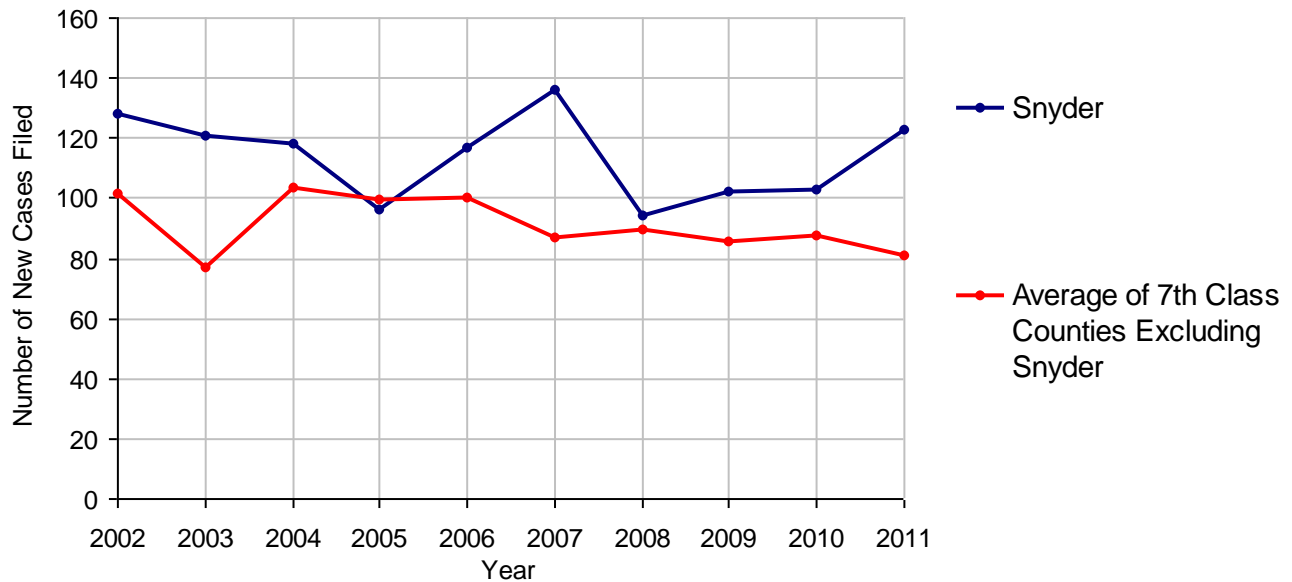
Snyder County

2011 Population Estimate: 39,819
 Class of County: 7th
 No. of Common Pleas Court Judgeships: 2
 (Snyder and Union combined)



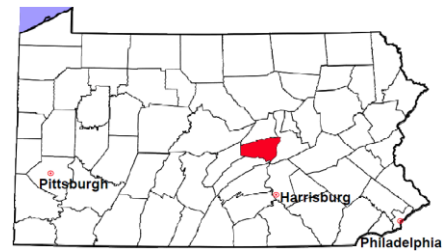
2011 Divorce	No. of Petitions	
Cases Pending 1/1/2011	132	
New Cases Filed in 2011	123	
Cases Available for Processing	255	
Processed By:		
Contested Before a Judge	0	
Contested Before a Master	6	5.3%
Uncontested	97	85.8%
Other	10	8.8%
Cases Processed	113	100.0%
Cases Pending 12/31/2011	142	

Divorce New Cases Filed, 2002-2011



Snyder County

2011 Population Estimate: 39,819
 Class of County: 7th
 No. of Common Pleas Court Judgeships: 2
 (Snyder and Union combined)



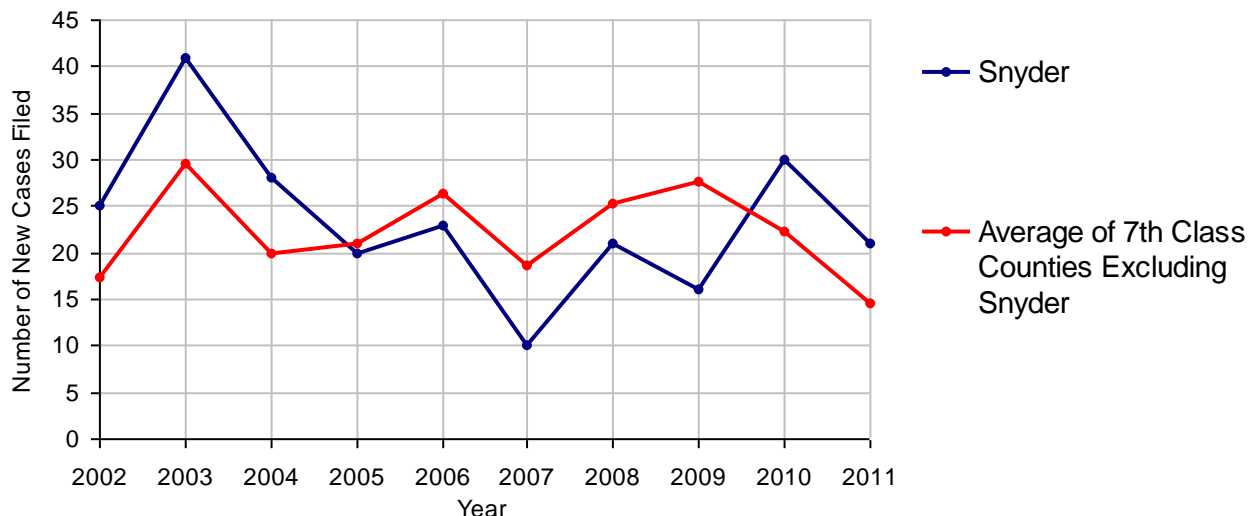
2011 Juvenile Dependency - Active Dependent Inventory



	Abuse/ Neglect	Status Offenses	Total
Cases Pending 1/1/2011	0	1	1
New Petitions Filed in 2011	21	0	21
Other	0	0	0
Total Petitions Available for Processing	21	1	22
Processed by:			
Adjudicated Dependent			
Judge	15	0	15
Master	0	0	0
Adjudicated NOT Dependent			
Judge	0	0	0
Master	0	0	0
Withdrawn/Dismissed/Inactive	1	0	1
Other	0	0	0
Total Petitions Processed	16	0	16
Cases Pending 12/31/2011	5	1	6

Data provided by CPCMS

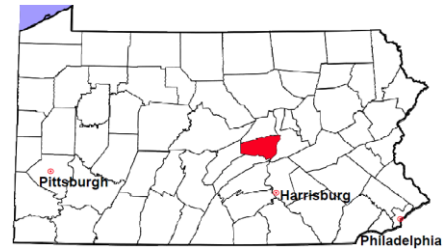
Abuse/Neglect and Status Offenses New Cases Filed, 2002-2011



Note: Dependency data for 2002-2010 were collected manually. Dependency data for 2011 were provided by CPCMS.

Snyder County

2011 Population Estimate: 39,819
 Class of County: 7th
 No. of Common Pleas Court Judgeships: 2
 (Snyder and Union combined)



2011 Juvenile Dependency - Adjudicated Dependent Inventory

	Abuse/ Neglect	Status Offenses	Total	
Cases Pending 1/1/2011	22	0	22	
New Adjudicated Dependent Cases	15	0	15	
Other	1	0	1	
Total Adjudicated Dependent Cases	38	0	38	
<u>Court Supervision Terminated:</u>				
Family Reunification	12	0	12	63.2%
Adoption	3	0	3	15.8%
Placement with a Relative/Guardian	2	0	2	10.5%
Aged Out	1	0	1	5.3%
Other Permanency Outcomes*	0	0	0	
Other**	1	0	1	5.3%
Total Adjudicated Dependent Cases Terminated	19	0	19	100.0%
Cases Pending 12/31/2011	19	0	19	

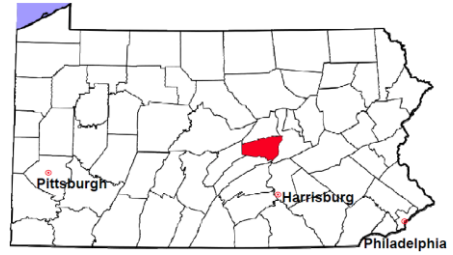
Data provided by CPCMS

* Other Permanency Outcomes include: adjudicated delinquent, death due to natural causes, emancipation, permanent living arrangement, and parent has come forward.

** Other includes cases where Court Supervision is terminated due to transfer out of jurisdiction, withdrawal and administrative closures.

Snyder County

2011 Population Estimate: 39,819
 Class of County: 7th
 No. of Common Pleas Court Judgeships: 2
 (Snyder and Union combined)

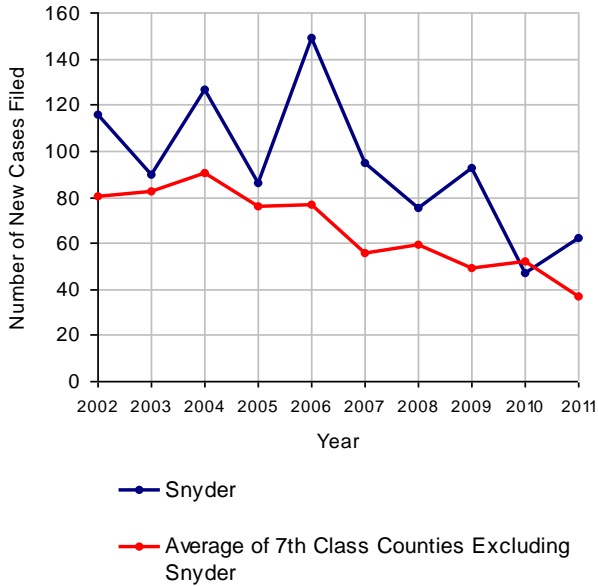


2011 Juvenile Delinquency

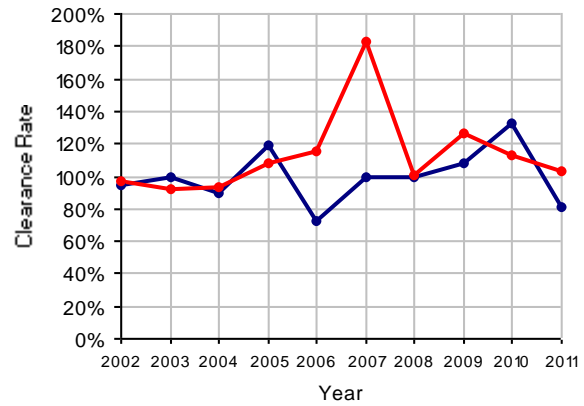
No. of Cases

Cases Pending 1/1/2011	56
New Cases Filed in 2011	62
Cases Available for Processing	118
Processed By:	
Judge	12 24.0%
Non-Judicial Officer	13 26.0%
Other	25 50.0%
Cases Processed	50 100.0%
Cases Pending 12/31/2011	68

Juvenile Delinquency New Cases Filed, 2002-2011

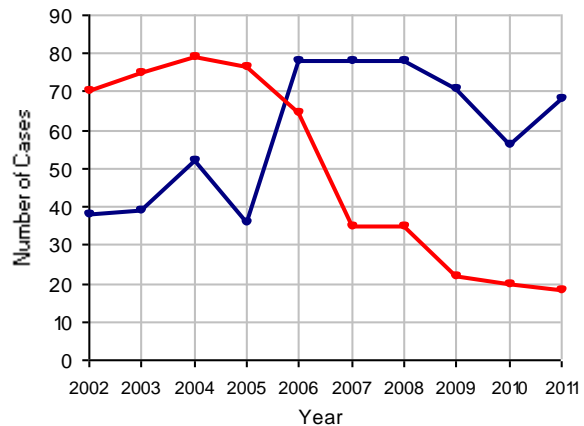


Clearance Rate, 2002-2011



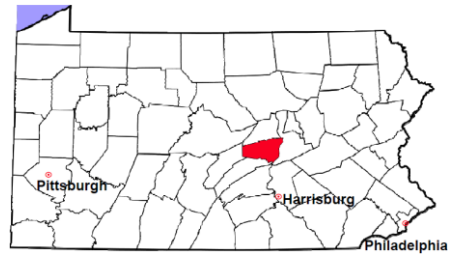
Note: Clearance Rate = Cases Processed / New Cases Filed

Cases Pending at the End of Year, 2002-2011



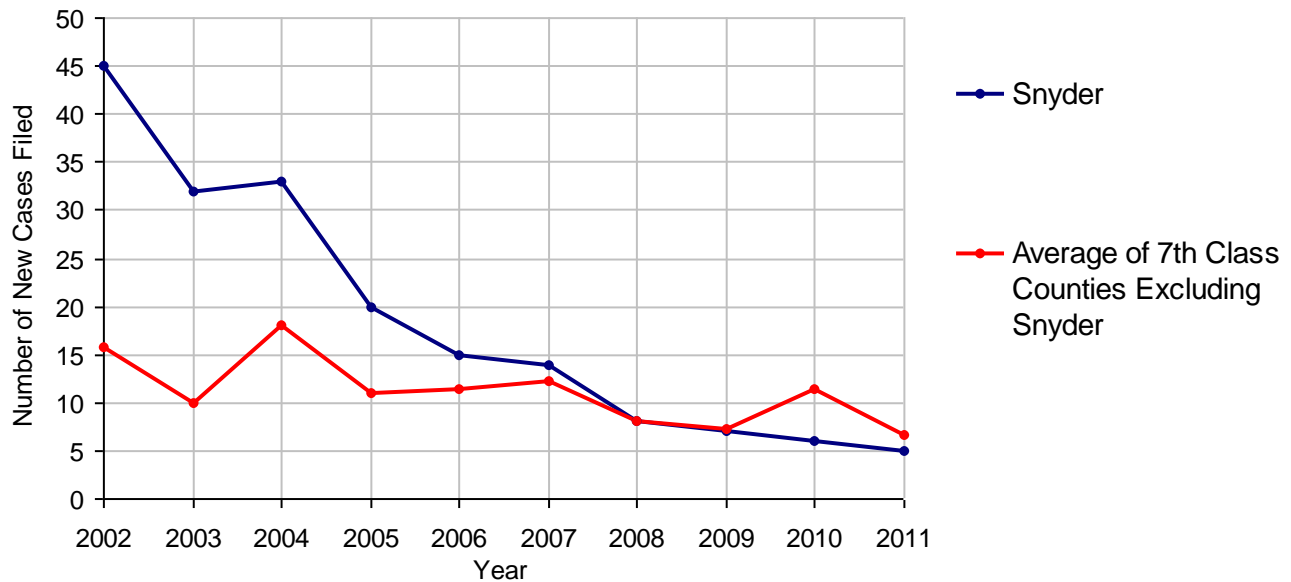
Snyder County

2011 Population Estimate: 39,819
 Class of County: 7th
 No. of Common Pleas Court Judgeships: 2
 (Snyder and Union combined)



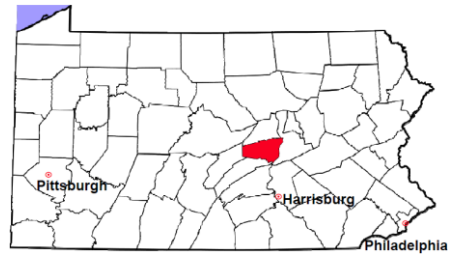
2011 Accounts	No. of Cases
Cases Pending 1/1/2011	3
New Cases Filed in 2011	5
Cases Available for Processing	8
Processed By:	
Contested before a Judge	0
Contested before a Non-judicial Officer	0
Uncontested	6 100.0%
Other	0
Cases Processed	6 100.0%
Cases Pending 12/31/2011	2

Accounts New Cases Filed, 2002-2011



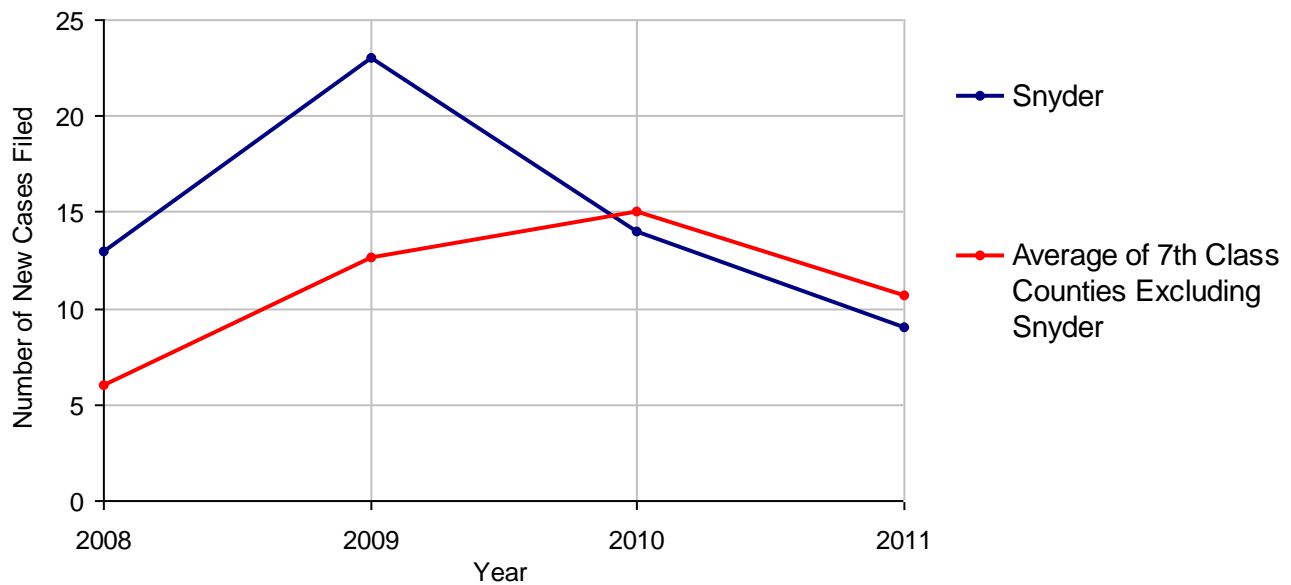
Snyder County

2011 Population Estimate: 39,819
 Class of County: 7th
 No. of Common Pleas Court Judgeships: 2
 (Snyder and Union combined)



2011 Adoptions		No. of Cases	
Cases Pending 1/1/2011		9	
New Cases Filed in 2011		9	
Cases Available for Processing		18	
Processed By:			
Contested before a Judge	Granted	0	
	Denied	0	
Uncontested	Granted	13	100.0%
	Denied	0	
Other		0	
Cases Processed		13	100.0%
Cases Pending 12/31/2011		5	

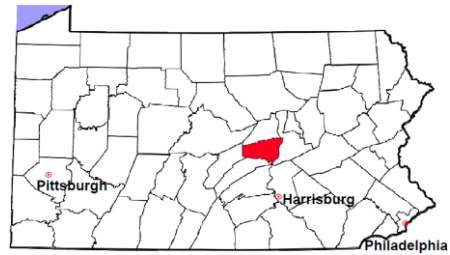
Adoptions New Cases Filed, 2008-2011



Note: Prior to 2008, each petition was counted as one new case, regardless of the number of children listed on the petition. Starting in 2008, each child listed on a petition is counted as a separate case. Therefore, statistics for the years since 2008 should not be compared to those for the years prior to 2008.

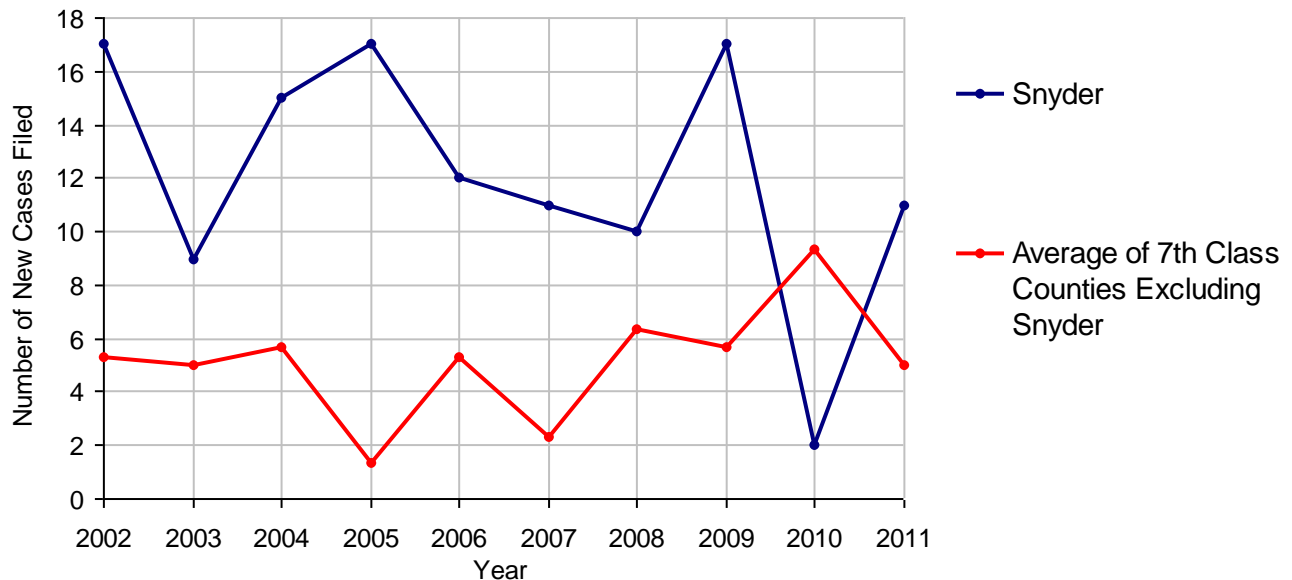
Snyder County

2011 Population Estimate: 39,819
 Class of County: 7th
 No. of Common Pleas Court Judgeships: 2
 (Snyder and Union combined)



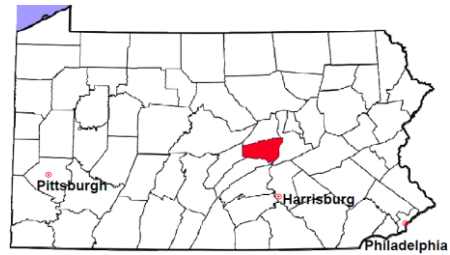
2011 Relinquishments/Terminations	No. of Cases
Cases Pending 1/1/2011	4
New Cases Filed in 2011	11
Cases Available for Processing	15
Processed By:	
Contested before a Judge	0
Uncontested	7 100.0%
Other	0
Cases Processed	7 100.0%
Cases Pending 12/31/2011	8

Relinquishments/Terminations New Cases Filed, 2002-2011



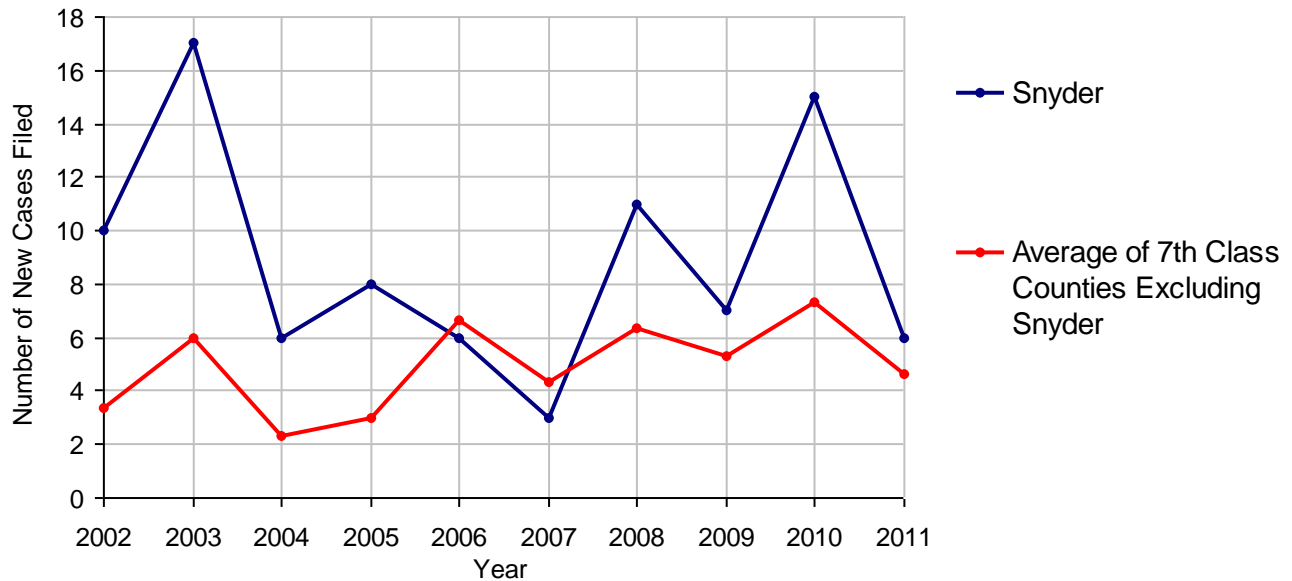
Snyder County

2011 Population Estimate: 39,819
 Class of County: 7th
 No. of Common Pleas Court Judgeships: 2
 (Snyder and Union combined)



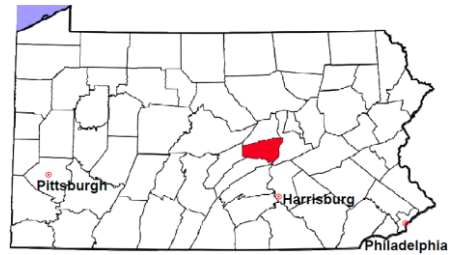
2011 Appointment of Guardians	No. of Cases
Cases Pending 1/1/2011	8
New Cases Filed in 2011	6
Cases Available for Processing	14
Processed By:	
Contested before a Judge	0
Uncontested	11 100.0%
Other	0
Cases Processed	11 100.0%
Cases Pending 12/31/2011	3

Appointment of Guardians New Cases Filed, 2002-2011



Snyder County

2011 Population Estimate: 39,819
Class of County: 7th
No. of Common Pleas Court Judgeships: 2
(Snyder and Union combined)



2011 Jury Activity and Performance Measures

A. Juror Days	376
B. Number Sent to Voir Dire	342
Voir Dire Attendance Rate (B/A * 100)	91.0%
C. Number of Jurors Selected	140
Juror Selection Rate (C/B * 100)	40.9%

Note: In mid-2011, AOPC began utilizing the National Center for State Courts' Jury Managers' Toolbox for collecting jury data. This has resulted in limited jury performance measures being reported for 2011. Additional data will be available in 2012.