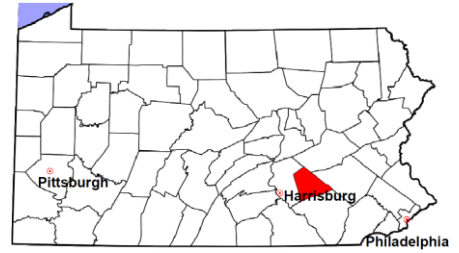


Lebanon County

2011 Population Estimate: 134,311
 Class of County: 5th
 No. of Common Pleas Court Judgeships: 4



2011 Criminal No. of Cases

Cases Pending 1/1/2011	717
New Cases Filed in 2011	1,891
Reopened Cases	100
Cases Available for Disposition	2,708

Disposed by:

Withdrawn/Dismissed	69	3.5%
ARD	285	14.3%
Guilty Plea	1,436	72.3%
Non-Jury Trial	28	1.4%
Jury Trial	62	3.1%
Inactive	81	4.1%
Other	26	1.3%
Total Cases Disposed	1,987	100.0%

Cases Pending 12/31/2011 **721**

Cases Awaiting Sentencing 173

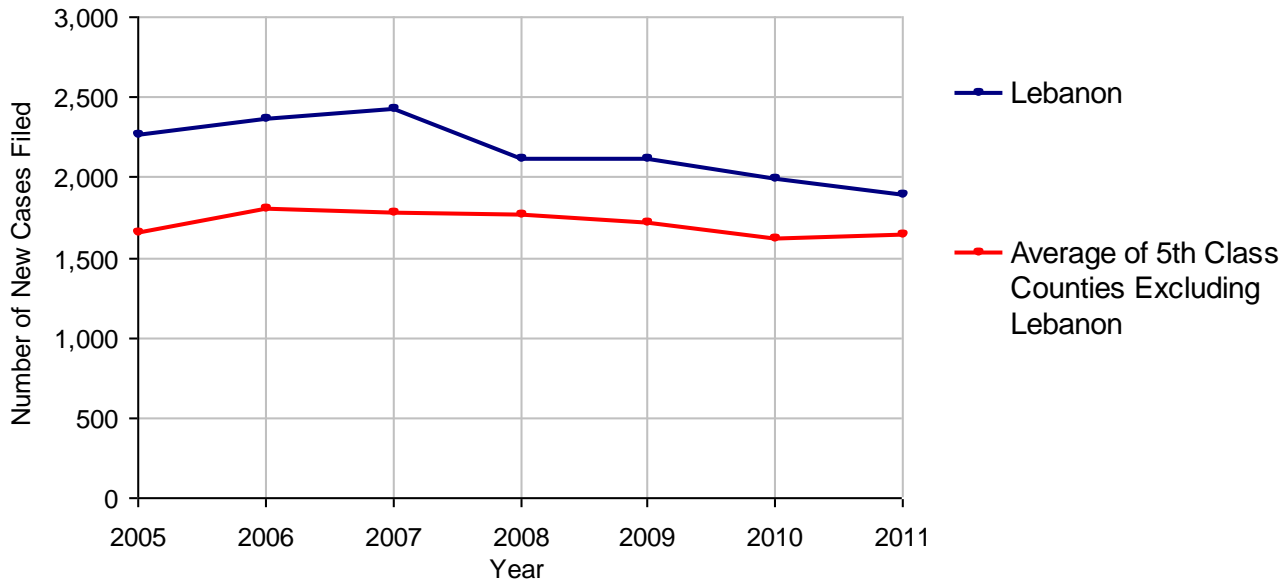
Data provided by CPCMS



Age of Pending Cases as of 12/31/2011

0-60 Days	360	49.9%
61-120 Days	165	22.9%
121-180 Days	75	10.4%
181-240 Days	29	4.0%
241-300 Days	14	1.9%
301-360 Days	13	1.8%
Over 360 Days	65	9.0%
Total	721	100.0%

Criminal New Cases Filed, 2005-2011

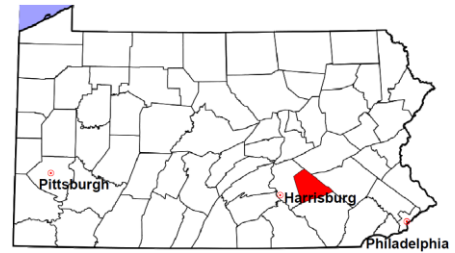


Lebanon County

2011 Population Estimate: 134,311

Class of County: 5th

No. of Common Pleas Court Judgeships: 4



2011 Criminal - New Cases by Case Type

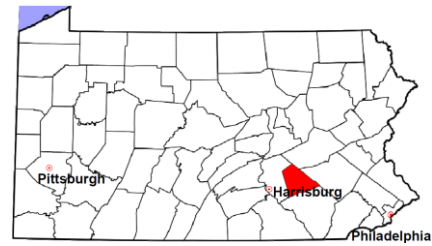


Case Type	Felony	Misdemeanor	Summary /Ungraded	Total
Person	119	224	0	343
Property	255	300	0	555
Drug	77	190	0	267
Weapon	19	13	0	32
Public Order	124	152	0	276
Motor Vehicle - DWI/DUI	0	403	0	403
Motor Vehicle - Other	0	15	0	15
Other	0	0	0	0
Total	594	1,297	0	1,891
	31.4%	68.6%		100.0%

Data provided by CPCMS

Lebanon County

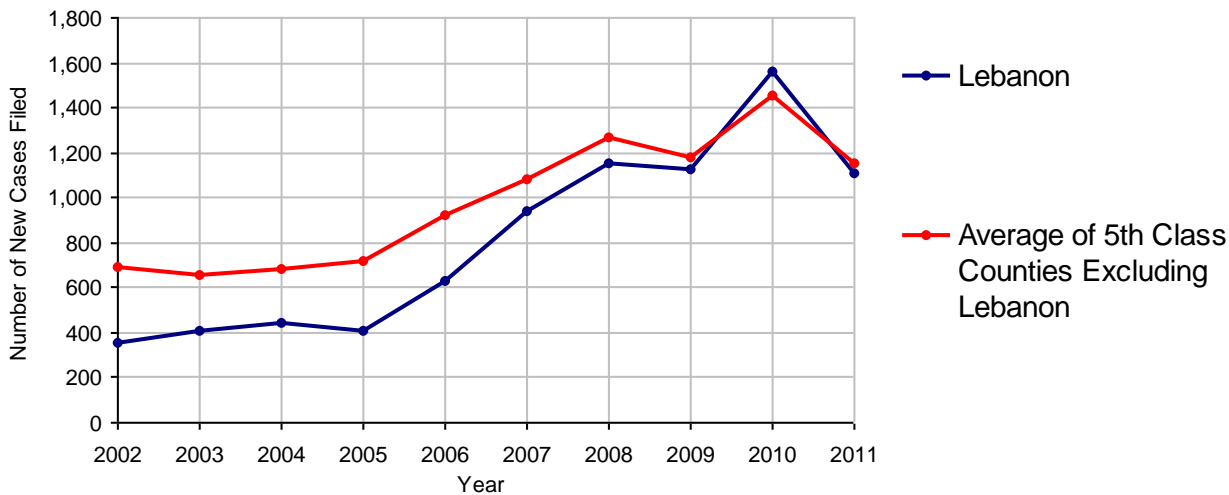
2011 Population Estimate: 134,311
 Class of County: 5th
 No. of Common Pleas Court Judgeships: 4



2011 Civil	Civil Action	Other	Total
Cases Pending 1/1/2011	452	229	681
Docketed Cases	735	372	1,107
Arbitration Appeals	0	0	0
Transferred In	3	0	3
Returned to Active	1	2	3
Cases Available for Processing	1,191	603	1,794
Disposed By:			
Default Judgments	348	170	518
Cases Decided by Arbitration Board	10	7	17
Dispositive Motions	12	25	37
Settlements	65	22	87
Moved to Inactive Status	17	3	20
Transferred/Withdrawn	27	25	52
Pa.R.J.A. 1901 Administrative Purge	0	0	0
Other	175	35	210
Jury Trial	0	2	2
Non-Jury Trial	1	0	1
Total Cases Disposed	655	289	944
Cases Pending 12/31/2011	536	314	850

Age of Pending Cases as of 12/31/2011 (Civil Action Only)		
0-6 months	250	46.6%
7-12 months	149	27.8%
13-18 months	137	25.6%
19-24 months	0	
25-30 months	0	
31-36 months	0	
37-42 months	0	
43-48 months	0	
49-54 months	0	
55-60 months	0	
61-66 months	0	
67-72 months	0	
Over 72 months	0	
Total	536	100.0%

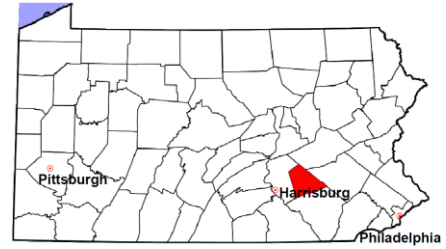
Docketed Cases, 2002-2011



Note: Prior to June 2010, docketed cases under the "Other" category were not reported. The reporting of these cases starting from June 2010 may contribute to an increase in docketed cases from 2009 to 2010.

Lebanon County

2011 Population Estimate: 134,311
 Class of County: 5th
 No. of Common Pleas Court Judgeships: 4



2011 Civil - Docketed Cases Listed by Case Type

TORT (does not include mass tort)

Intentional	11
Malicious Prosecution	1
Motor Vehicle	67
Nuisance	1
Premise Liability	16
Product Liability	2
Slander/Libel/Defamation	0
Other	28

MASS TORT

Asbestos	0
Tobacco	0
Toxic Tort - DES	0
Toxic Tort - Implant	0
Toxic Waste	0
Other	0

PROFESSIONAL LIABILITY

Dental	0
Legal	0
Medical Malpractice	11
Other	0

CONTRACT

(does not include judgments)

Buyer Plaintiff	6
Debt Collection:	
Credit Card	390
Debt Collection: Other	134
Employment Dispute:	
Discrimination	1
Employment Dispute: Other	1
Other	40

REAL PROPERTY

Ejectment*	42
Eminent Domain/ Condemnation*	3
Ground Rent	0
Landlord/Tenant Dispute	26
Mortgage Forclosures:	
Residential*	238
Commercial*	5
Partition of Real Property*	0
Quiet Title*	2
Other*	9

CIVIL APPEALS

Administrative Agencies

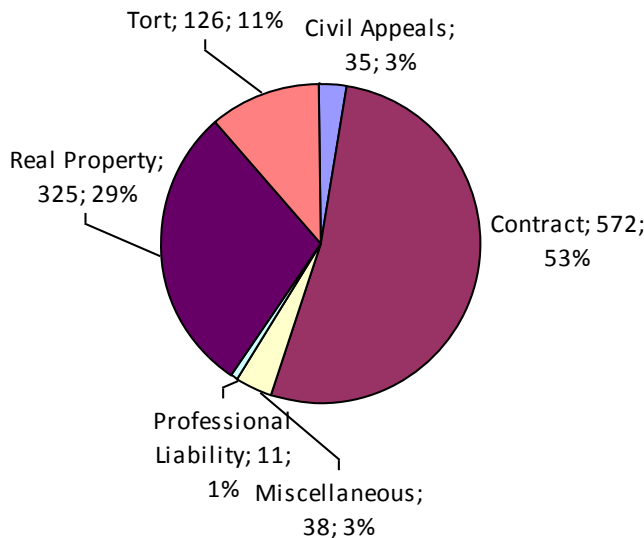
Board of Assessment*	12
Board of Elections*	0
Dept. of Transportation*	12
Zoning Board*	4
Statutory Appeal - Other*	1
Other*	6

MISCELLANEOUS

Common Law/ Statutory Arbitration*	0
Declaratory Judgment*	10
Mandamus*	0
Non-Domestic Relations Restraining Order*	0
Quo Warranto*	0
Replevin*	3
Other*	25

TOTAL DOCKETED CASES:
1,107

* Civil Other



Of the Docketed Cases:

Pro Se Filings:	71	6.4%
Class Action Suits:	0	
MDJ Appeals:	75	6.8%

Lebanon County

2011 Population Estimate: 134,311
 Class of County: 5th
 No. of Common Pleas Court Judgeships: 4



2011 Protection From Abuse

**No. of
Petitions**

Cases Pending 1/1/2011 72 (R)

New Cases Filed in 2011 413

Of these, Petitions Requesting Temporary Orders: 413 (100.0%)

Temporary Orders DENIED: 47 (11.4%), Temporary Orders GRANTED: 366 (88.6%)

Cases Available for Processing 485

Processed By:

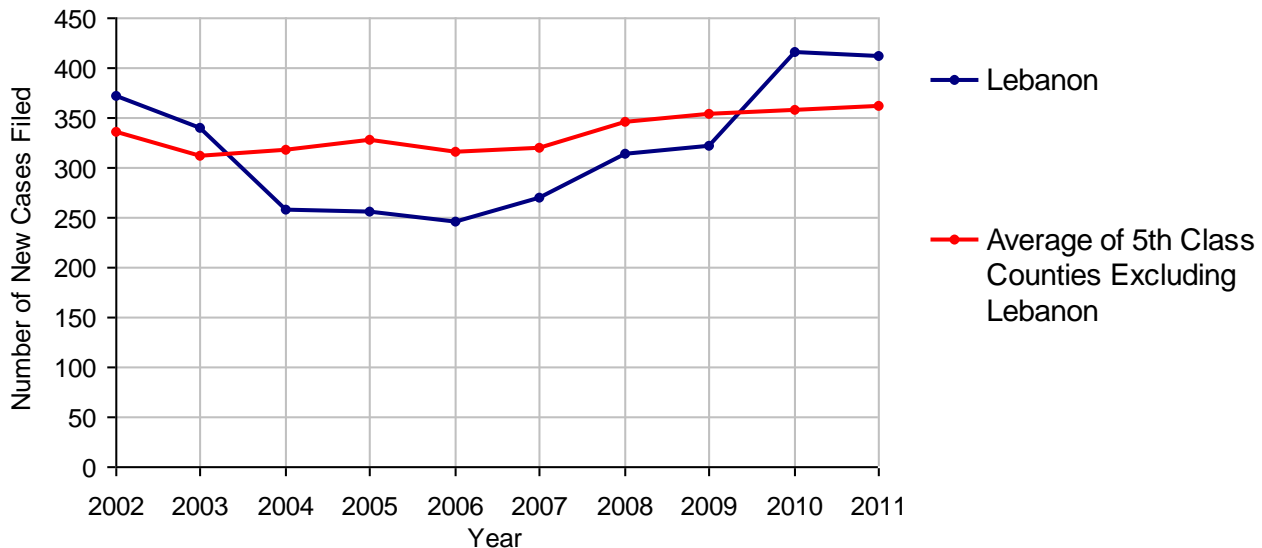
Temporary Order DENIED After Ex Parte Hearing and No Evidentiary Hearing Scheduled	37	9.3%
Temporary Order DISMISSED After Evidentiary Hearing and No Final Order Entered	2	0.5%
Final Order DENIED After Evidentiary Hearing Before a Judge	10	2.5%
Final Order GRANTED After Evidentiary Hearing Before a Judge	54	13.5%
Plaintiff Did Not Appear For Evidentiary Hearing	46	11.5%
Final Order by STIPULATION OR AGREEMENT Between the Parties	138	34.6%
Petition WITHDRAWN by Plaintiff	112	28.1%
TRANSFERRED to Another Jurisdiction	0	
DECEASED Party	0	
Other	0	

Cases Processed 399 100.0%

Cases Pending 12/31/2011 86

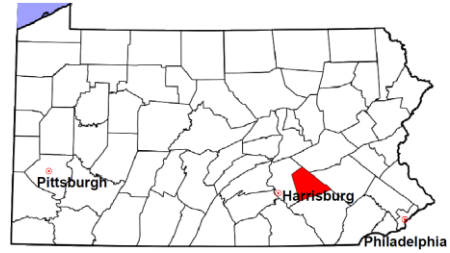
(R) - Revised

PFA New Cases Filed, 2002-2011

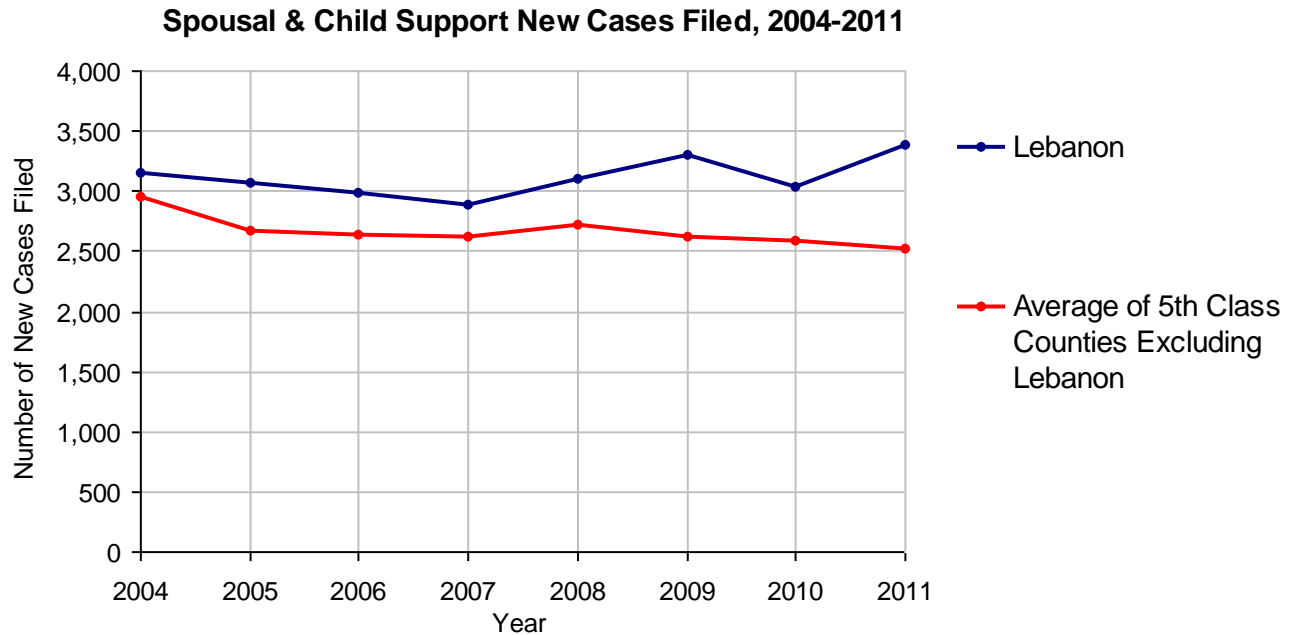


Lebanon County

2011 Population Estimate: 134,311
 Class of County: 5th
 No. of Common Pleas Court Judgeships: 4



2011 Spousal & Child Support	No. of Petitions	
Cases Pending 1/1/2011	639	
New Cases Filed in 2011	3,386	
Dockets Transferred In (+)	47	
Dockets Transferred Out (-)	48	
Cases Available for Processing	4,024	
Processed By:		
Judge	80	2.5%
Intake Officer	2,593	79.8%
Hearing Officer	577	17.8%
Other	0	
Cases Processed	3,250	100.0%
Cases Pending 12/31/2011	774	

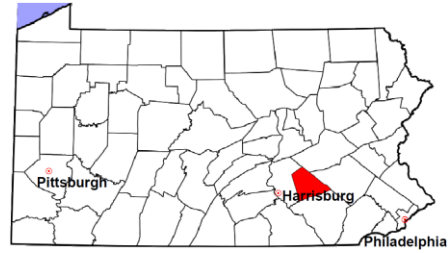


Lebanon County

2011 Population Estimate: 134,311

Class of County: 5th

No. of Common Pleas Court Judgeships: 4



2011 Custody/Partial Custody/Visitation

No. of
Petitions

Cases Pending 1/1/2011 626

New Cases Filed in 2011 308

Cases Available for Processing 934

Processed By:

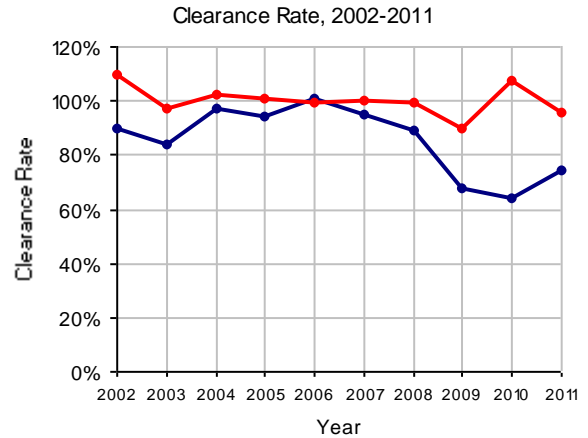
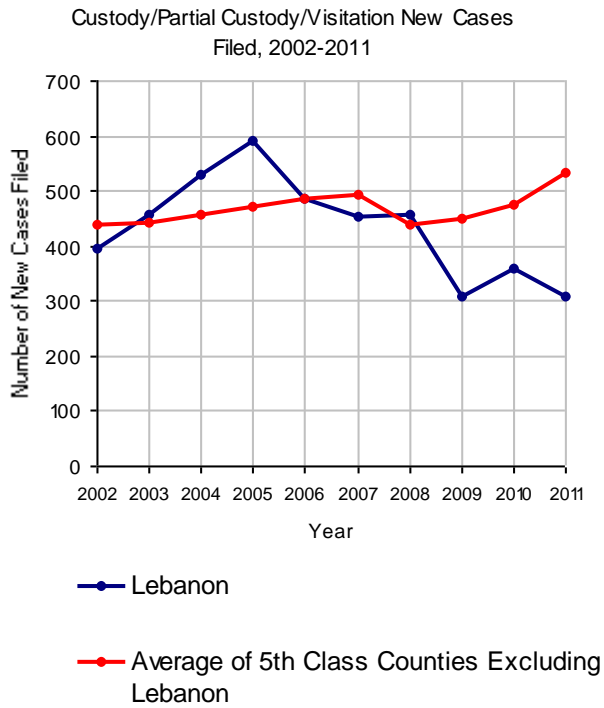
Judge 10 4.3%

Non-Judicial Officer 104 45.2%

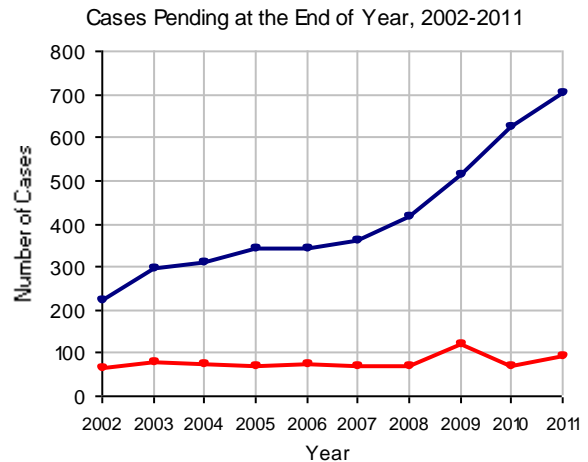
Other 116 50.4%

Cases Processed 230 100.0%

Cases Pending 12/31/2011 704

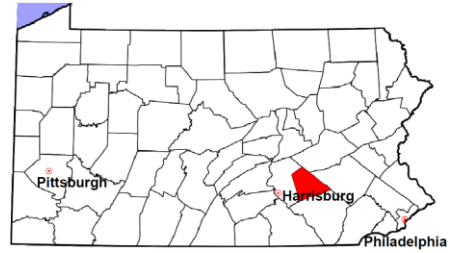


Note: Clearance Rate = Cases Processed / New Cases Filed



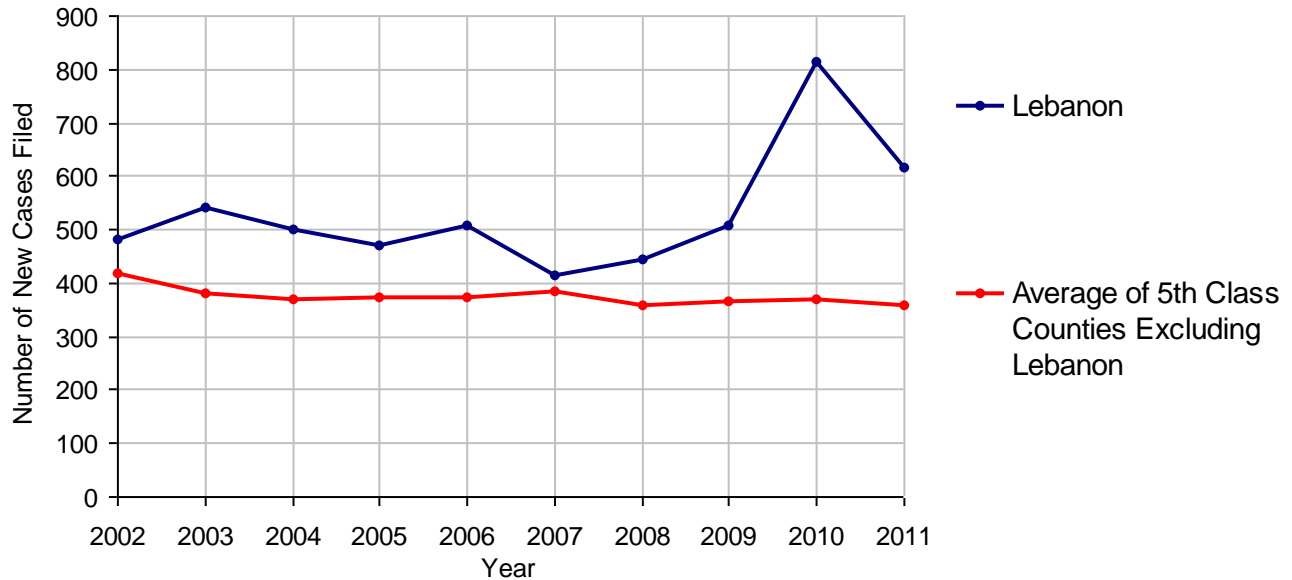
Lebanon County

2011 Population Estimate: 134,311
 Class of County: 5th
 No. of Common Pleas Court Judgeships: 4



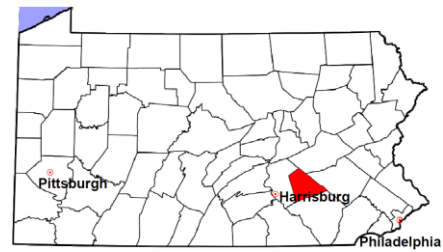
2011 Divorce	No. of Petitions	
Cases Pending 1/1/2011	1,510	
New Cases Filed in 2011	616	
Cases Available for Processing	2,126	
Processed By:		
Contested Before a Judge	7	1.5%
Contested Before a Master	39	8.6%
Uncontested	409	89.9%
Other	0	
Cases Processed	455	100.0%
Cases Pending 12/31/2011	1,671	

Divorce New Cases Filed, 2002-2011



Lebanon County

2011 Population Estimate: 134,311
 Class of County: 5th
 No. of Common Pleas Court Judgeships: 4



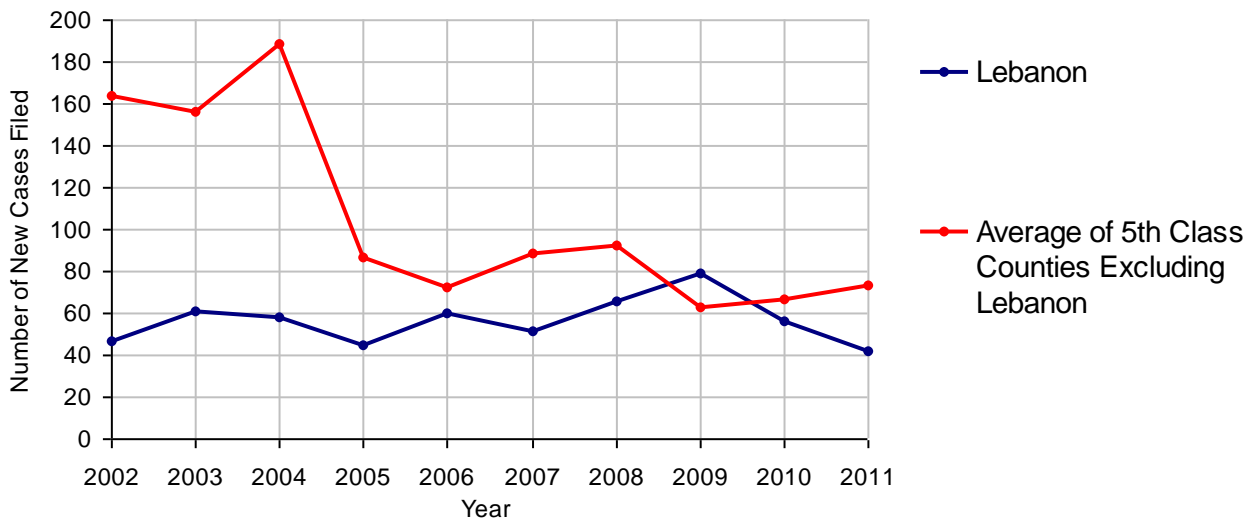
2011 Juvenile Dependency - Active Dependent Inventory



	Abuse/ Neglect	Status Offenses	Total
Cases Pending 1/1/2011	1	1	2
New Petitions Filed in 2011	18	24	42
Other	0	0	0
Total Petitions Available for Processing	19	25	44
Processed by:			
Adjudicated Dependent			
Judge	18	21	39
Master	0	0	0
Adjudicated NOT Dependent			
Judge	0	0	0
Master	0	0	0
Withdrawn/Dismissed/Inactive	0	2	2
Other	0	0	0
Total Petitions Processed	18	23	41
Cases Pending 12/31/2011	1	2	3

Data provided by CPCMS

Abuse/Neglect and Status Offenses New Cases Filed, 2002-2011



Note: Dependency data for 2002-2010 were collected manually. Dependency data for 2011 were provided by CPCMS.

Lebanon County

2011 Population Estimate: 134,311
 Class of County: 5th
 No. of Common Pleas Court Judgeships: 4



2011 Juvenile Dependency - Adjudicated Dependent Inventory

	Abuse/ Neglect	Status Offenses	Total	
Cases Pending 1/1/2011	99	19	118	
New Adjudicated Dependent Cases	18	21	39	
Other	0	0	0	
Total Adjudicated Dependent Cases	117	40	157	
<u>Court Supervision Terminated:</u>				
Family Reunification	8	4	12	42.9%
Adoption	0	0	0	
Placement with a Relative/Guardian	3	4	7	25.0%
Aged Out	6	1	7	25.0%
Other Permanency Outcomes*	1	0	1	3.6%
Other**	1	0	1	3.6%
Total Adjudicated Dependent Cases Terminated	19	9	28	100.0%
Cases Pending 12/31/2011	98	31	129	

Data provided by CPCMS

* Other Permanency Outcomes include: adjudicated delinquent, death due to natural causes, emancipation, permanent living arrangement, and parent has come forward.

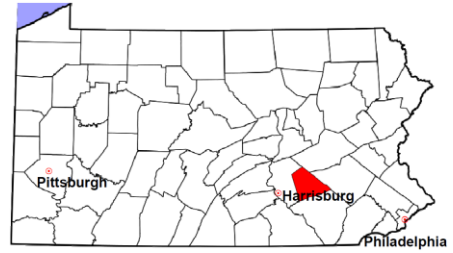
** Other includes cases where Court Supervision is terminated due to transfer out of jurisdiction, withdrawal and administrative closures.

Lebanon County

2011 Population Estimate: 134,311

Class of County: 5th

No. of Common Pleas Court Judgeships: 4

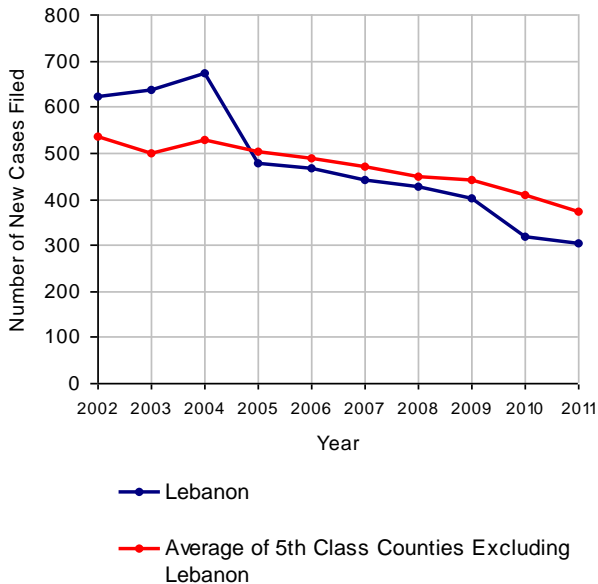


2011 Juvenile Delinquency

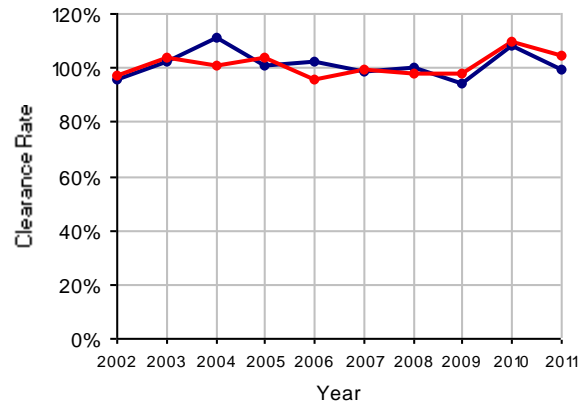
No. of Cases

Cases Pending 1/1/2011	32
New Cases Filed in 2011	305
Cases Available for Processing	337
Processed By:	
Judge	223 73.4%
Non-Judicial Officer	59 19.4%
Other	22 7.2%
Cases Processed	304 100.0%
Cases Pending 12/31/2011	33

Juvenile Delinquency New Cases Filed, 2002-2011

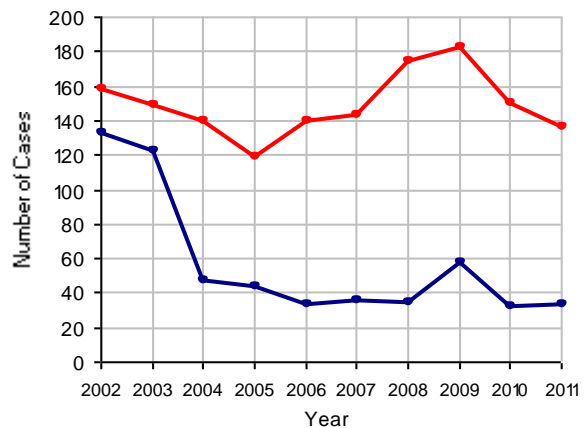


Clearance Rate, 2002-2011



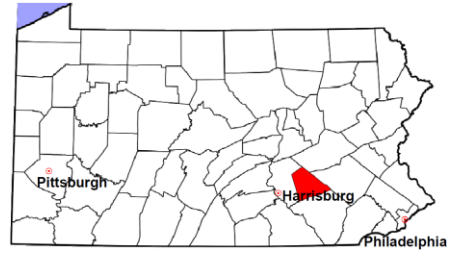
Note: Clearance Rate = Cases Processed / New Cases Filed

Cases Pending at the End of Year, 2002-2011



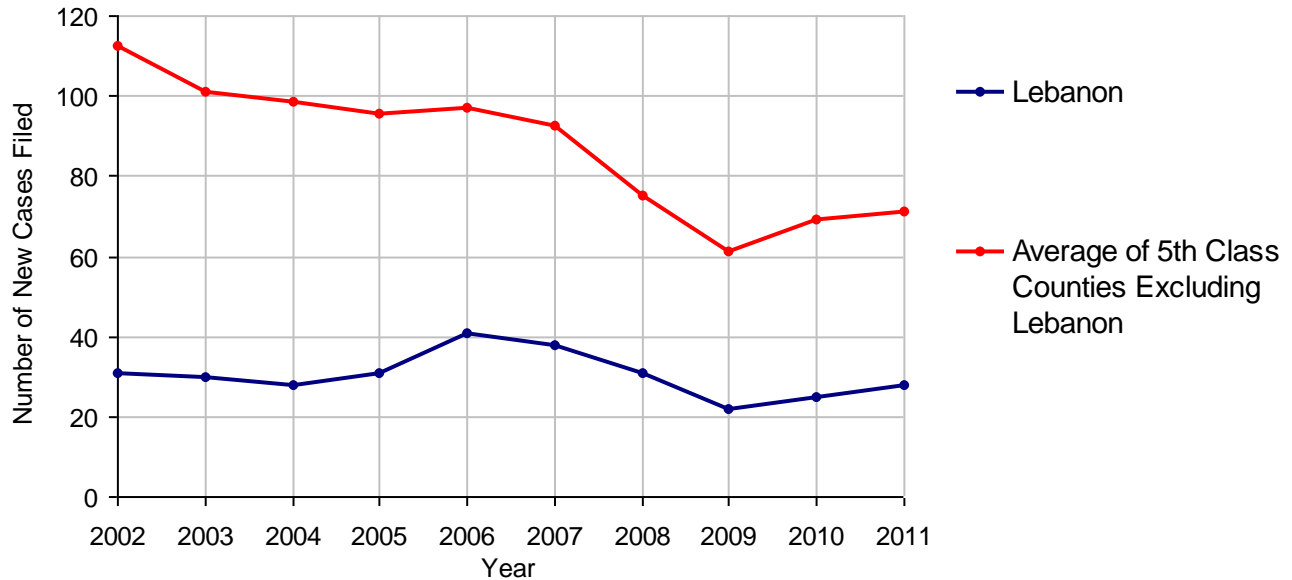
Lebanon County

2011 Population Estimate: 134,311
 Class of County: 5th
 No. of Common Pleas Court Judgeships: 4



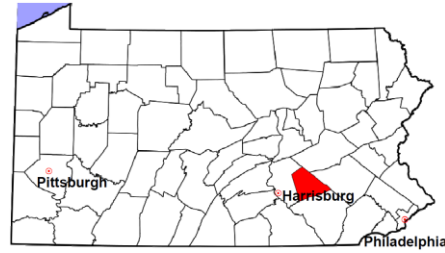
2011 Accounts	No. of Cases	
Cases Pending 1/1/2011	16	
New Cases Filed in 2011	28	
Cases Available for Processing	44	
Processed By:		
Contested before a Judge	0	
Contested before a Non-judicial Officer	0	
Uncontested	28	100.0%
Other	0	
Cases Processed	28	100.0%
Cases Pending 12/31/2011	16	

Accounts New Cases Filed, 2002-2011



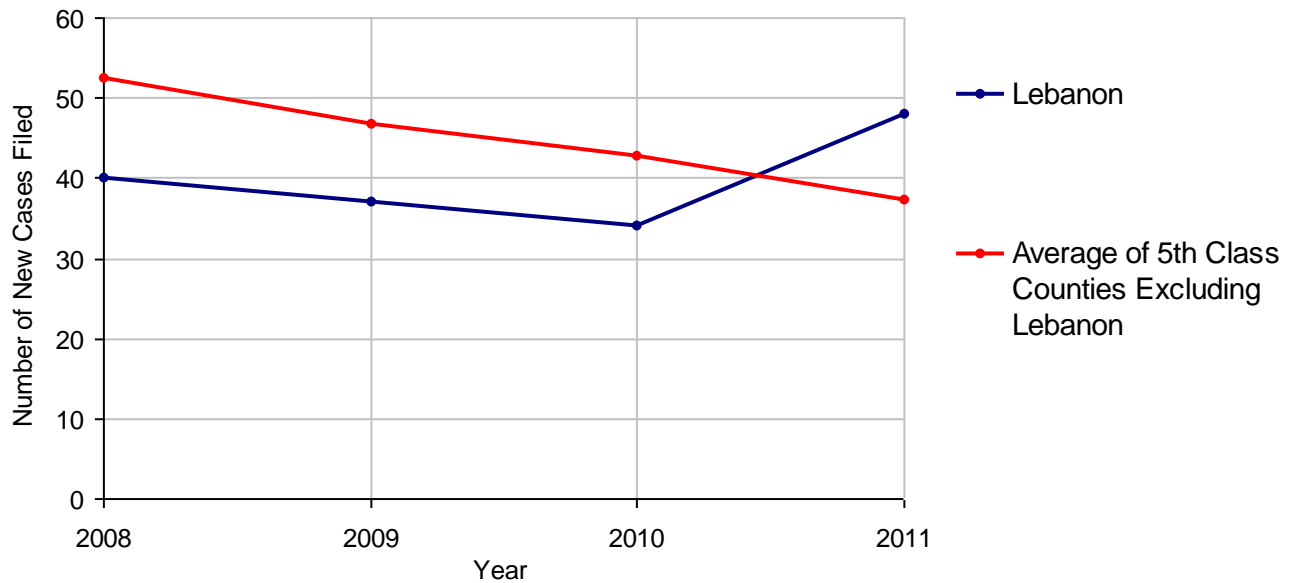
Lebanon County

2011 Population Estimate: 134,311
 Class of County: 5th
 No. of Common Pleas Court Judgeships: 4



2011 Adoptions		No. of Cases	
Cases Pending 1/1/2011		4	
New Cases Filed in 2011		48	
Cases Available for Processing		52	
Processed By:			
Contested before a Judge	Granted	0	
	Denied	0	
Uncontested	Granted	49	100.0%
	Denied	0	
Other		0	
Cases Processed		49	100.0%
Cases Pending 12/31/2011		3	

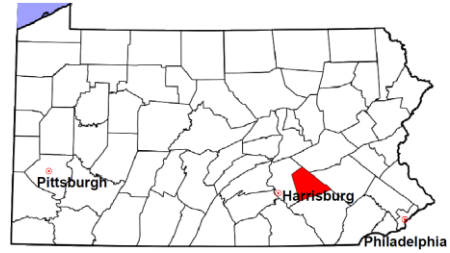
Adoptions New Cases Filed, 2008-2011



Note: Prior to 2008, each petition was counted as one new case, regardless of the number of children listed on the petition. Starting in 2008, each child listed on a petition is counted as a separate case. Therefore, statistics for the years since 2008 should not be compared to those for the years prior to 2008.

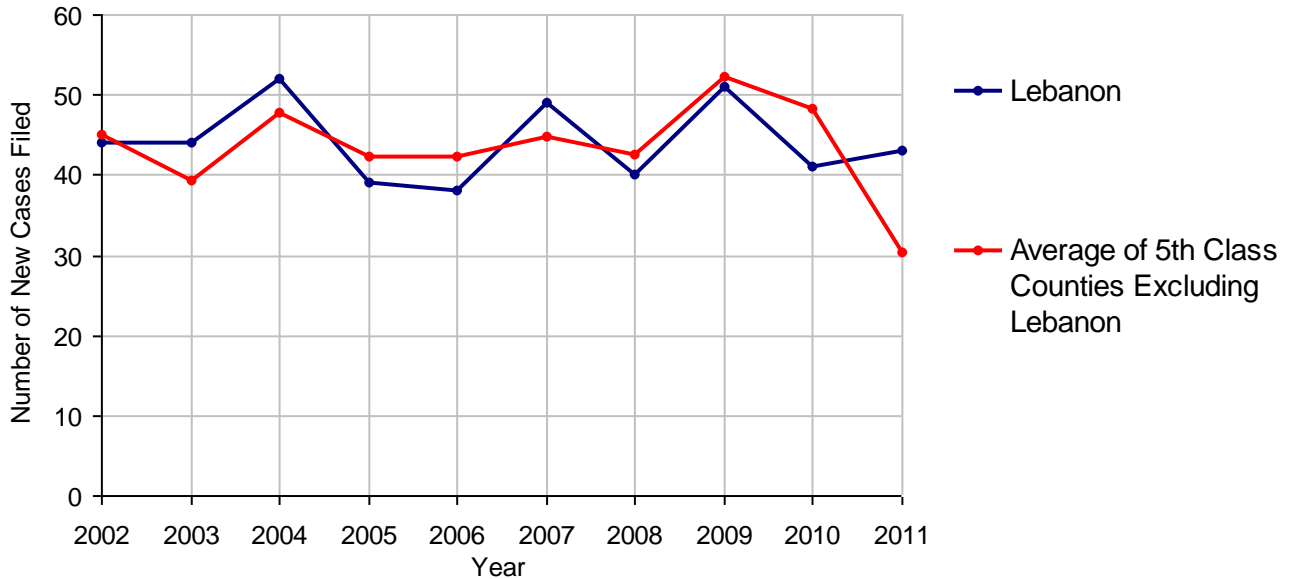
Lebanon County

2011 Population Estimate: 134,311
 Class of County: 5th
 No. of Common Pleas Court Judgeships: 4



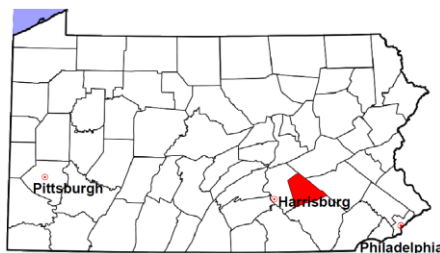
2011 Relinquishments/Terminations	No. of Cases	
Cases Pending 1/1/2011	11	
New Cases Filed in 2011	43	
Cases Available for Processing	54	
Processed By:		
Contested before a Judge	0	
Uncontested	52	100.0%
Other	0	
Cases Processed	52	100.0%
Cases Pending 12/31/2011	2	

Relinquishments/Terminations New Cases Filed, 2002-2011



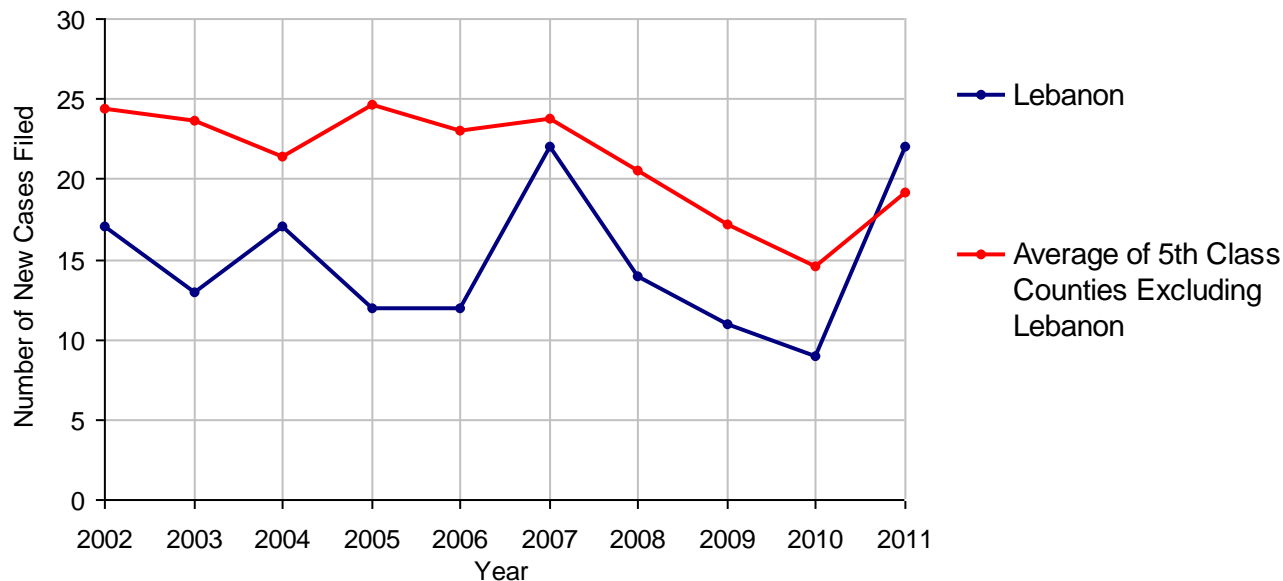
Lebanon County

2011 Population Estimate: 134,311
 Class of County: 5th
 No. of Common Pleas Court Judgeships: 4



2011 Appointment of Guardians		No. of Cases
Cases Pending 1/1/2011		1
New Cases Filed in 2011		22
Cases Available for Processing		23
Processed By:		
Contested before a Judge		0
Uncontested	17	85.0%
Other	3	15.0%
Cases Processed	20	100.0%
Cases Pending 12/31/2011		3

Appointment of Guardians New Cases Filed, 2002-2011

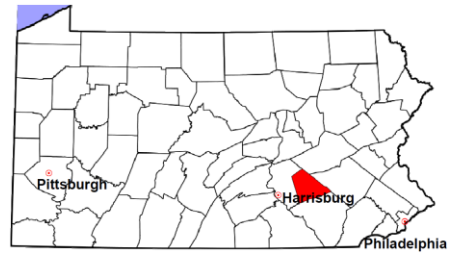


Lebanon County

2011 Population Estimate: 134,311

Class of County: 5th

No. of Common Pleas Court Judgeships: 4



2011 Jury Activity and Performance Measures

A. Juror Days	2,365	
B. Number Sent to Voir Dire	3,122	
Voir Dire Attendance Rate (B/A * 100)		132.0%
C. Number of Jurors Selected	1,414	
Juror Selection Rate (C/B * 100)		45.3%

Note: In mid-2011, AOPC began utilizing the National Center for State Courts' Jury Managers' Toolbox for collecting jury data. This has resulted in limited jury performance measures being reported for 2011. Additional data will be available in 2012.