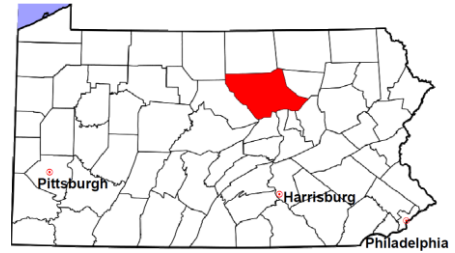


Lycoming County

2011 Population Estimate: 116,747
 Class of County: 5th
 No. of Common Pleas Court Judgeships: 5



2011 Criminal	No. of Cases
---------------	--------------

Cases Pending 1/1/2011	496
New Cases Filed in 2011	1,747
Reopened Cases	37
Cases Available for Disposition	2,280

Disposed by:

Withdrawn/Dismissed	67	3.8%
ARD	60	3.4%
Guilty Plea	1,367	76.9%
Non-Jury Trial	22	1.2%
Jury Trial	31	1.7%
Inactive	43	2.4%
Other	188	10.6%
Total Cases Disposed	1,778	100.0%

Cases Pending 12/31/2011	502
Cases Awaiting Sentencing	193

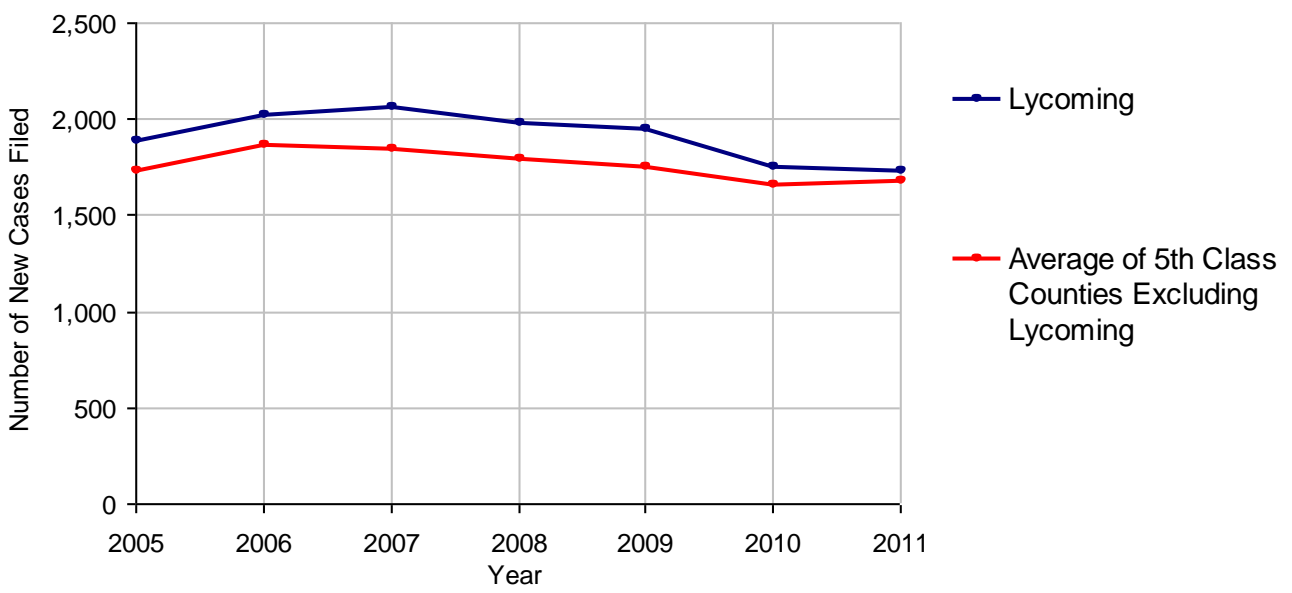
Data provided by CPCMS



Age of Pending Cases as of 12/31/2011

0-60 Days	214	42.6%
61-120 Days	100	19.9%
121-180 Days	57	11.4%
181-240 Days	37	7.4%
241-300 Days	31	6.2%
301-360 Days	23	4.6%
Over 360 Days	40	8.0%
Total	502	100.0%

Criminal New Cases Filed, 2005-2011

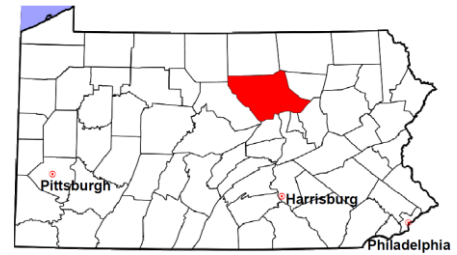


Lycoming County

2011 Population Estimate: 116,747

Class of County: 5th

No. of Common Pleas Court Judgeships: 5



2011 Criminal - New Cases by Case Type

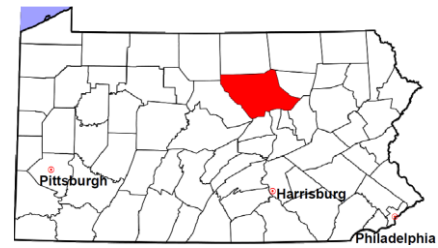


Case Type	Felony	Misdemeanor	Summary /Ungraded	Total
Person	100	134	3	237
Property	232	214	2	448
Drug	64	200	2	266
Weapon	21	6	0	27
Public Order	86	129	0	215
Motor Vehicle - DWI/DUI	0	540	2	542
Motor Vehicle - Other	1	8	2	11
Other	1	0	0	1
Total	505	1,231	11	1,747
	28.9%	70.5%	0.6%	100.0%

Data provided by CPCMS

Lycoming County

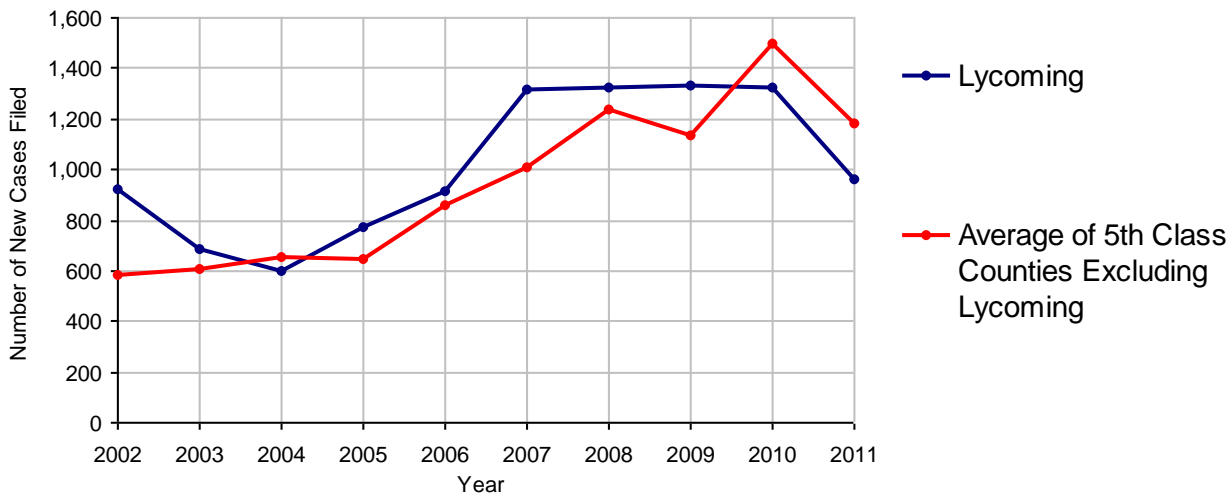
2011 Population Estimate: 116,747
 Class of County: 5th
 No. of Common Pleas Court Judgeships: 5



2011 Civil	Civil Action	Other	Total
Cases Pending 1/1/2011	607	68	675
Docketed Cases	614	349	963
Arbitration Appeals	0	0	0
Transferred In	0	0	0
Returned to Active	0	0	0
Cases Available for Processing	1,221	417	1,638
Disposed By:			
Default Judgments	705	236	941
Cases Decided by Arbitration Board	110	24	134
Dispositive Motions	0	3	3
Settlements	24	28	52
Moved to Inactive Status	0	1	1
Transferred/Withdrawn	2	0	2
Pa.R.J.A. 1901 Administrative Purge	0	0	0
Other	166	44	210
Jury Trial	5	0	5
Non-Jury Trial	8	0	8
Total Cases Disposed	1,020	336	1,356
Cases Pending 12/31/2011	201	81	282

Age of Pending Cases as of 12/31/2011 (Civil Action Only)		
0-6 months	156	77.6%
7-12 months	20	10.0%
13-18 months	13	6.5%
19-24 months	4	2.0%
25-30 months	2	1.0%
31-36 months	0	
37-42 months	2	1.0%
43-48 months	2	1.0%
49-54 months	1	0.5%
55-60 months	0	
61-66 months	0	
67-72 months	1	0.5%
Over 72 months	0	
Total	201	100.0%

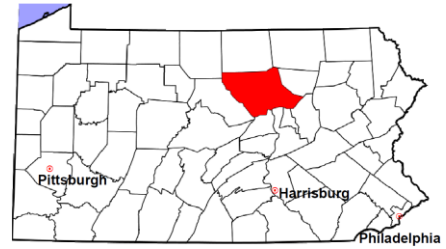
Docketed Cases, 2002-2011



Note: Prior to June 2010, docketed cases under the "Other" category were not reported. The reporting of these cases starting from June 2010 may contribute to an increase in docketed cases from 2009 to 2010.

Lycoming County

2011 Population Estimate: 116,747
 Class of County: 5th
 No. of Common Pleas Court Judgeships: 5



2011 Civil - Docketed Cases Listed by Case Type

TORT (does not include mass tort)

Intentional	3
Malicious Prosecution	0
Motor Vehicle	70
Nuisance	1
Premise Liability	13
Product Liability	3
Slander/Libel/Defamation	0
Other	16

MASS TORT

Asbestos	0
Tobacco	0
Toxic Tort - DES	0
Toxic Tort - Implant	0
Toxic Waste	0
Other	0

PROFESSIONAL LIABILITY

Dental	0
Legal	1
Medical Malpractice	9
Other	1

CONTRACT

(does not include judgments)

Buyer Plaintiff	3
Debt Collection:	
Credit Card	298
Other	148
Employment Dispute:	
Discrimination	0
Other	4
Other	34

REAL PROPERTY

Ejectment*	21
Eminent Domain/ Condemnation*	16
Ground Rent	0
Landlord/Tenant Dispute	10
Mortgage Forclosure:	
Residential*	161
Commercial*	2
Partition of Real Property*	6
Quiet Title*	9
Other*	12

CIVIL APPEALS

Administrative Agencies

Board of Assessment*	0
Board of Elections*	0
Dept. of Transportation*	13
Zoning Board*	1
Statutory Appeal - Other*	4
Other*	6

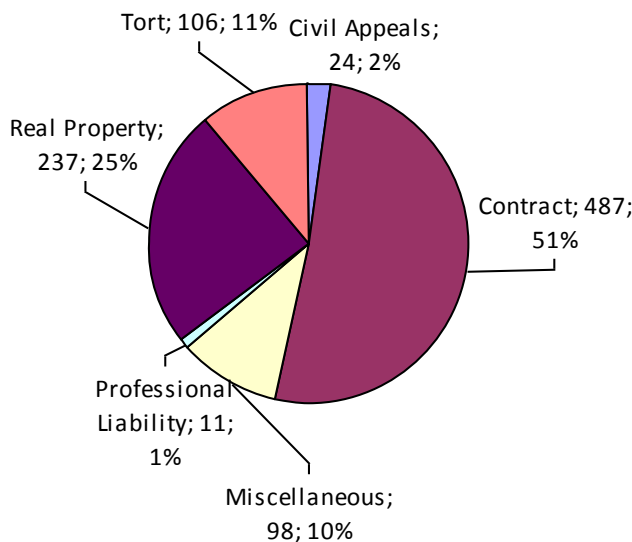
MISCELLANEOUS

Common Law/ Statutory Arbitration*	0
Declaratory Judgment*	8
Mandamus*	0
Non-Domestic Relations Restraining Order*	0
Quo Warranto*	0
Replevin*	5
Other*	85

TOTAL DOCKETED CASES:

963

* Civil Other

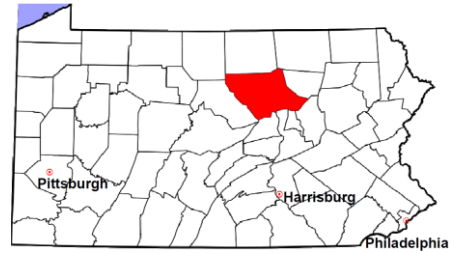


Of the Docketed Cases:

Pro Se Filings:	16	1.7%
Class Action Suits:	2	0.2%
MDJ Appeals:	14	1.5%

Lycoming County

2011 Population Estimate: 116,747
 Class of County: 5th
 No. of Common Pleas Court Judgeships: 5



2011 Protection From Abuse

**No. of
Petitions**

Cases Pending 1/1/2011	22
New Cases Filed in 2011	225

*Of these, Petitions Requesting Temporary Orders: 225 (100.0%)
 Temporary Orders DENIED: 5 (2.2%), Temporary Orders GRANTED: 220 (97.8%)*

Cases Available for Processing 247

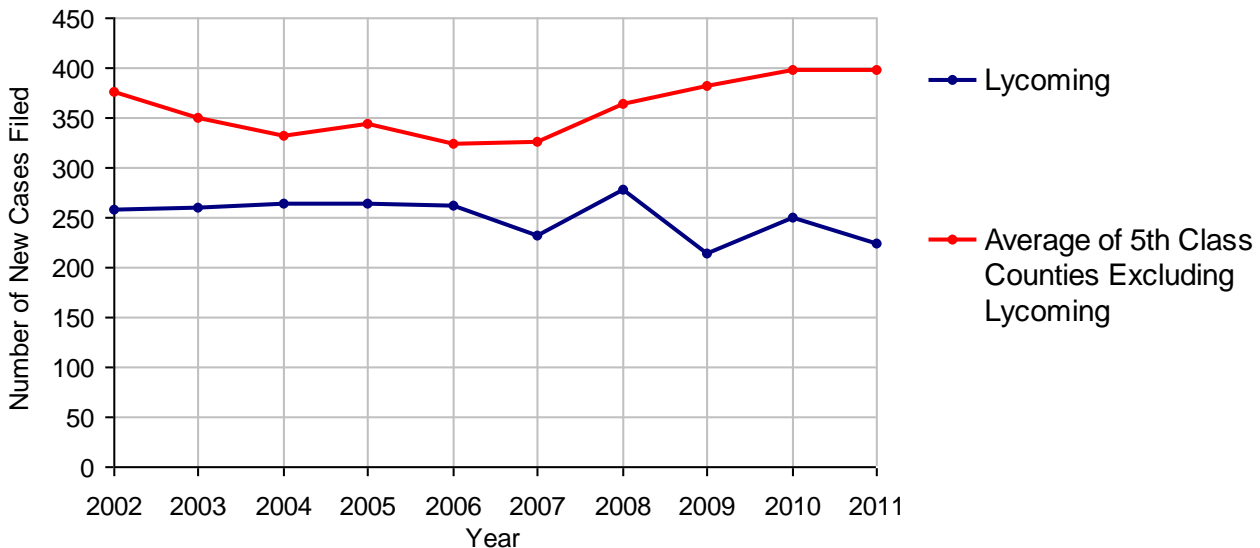
Processed By:

Temporary Order DENIED After Ex Parte Hearing and No Evidentiary Hearing Scheduled	5	2.4%
Temporary Order DISMISSED After Evidentiary Hearing and Final Order Entered	0	
Final Order DENIED After Evidentiary Hearing Before a Judge	17	8.0%
Final Order GRANTED After Evidentiary Hearing Before a Judge	27	12.7%
Plaintiff Did Not Appear For Evidentiary Hearing	30	14.2%
Final Order by STIPULATION OR AGREEMENT Between the Parties	94	44.3%
Petition WITHDRAWN by Plaintiff	39	18.4%
TRANSFERRED to Another Jurisdiction	0	
DECEASED Party	0	
Other	0	

Cases Processed 212 100.0%

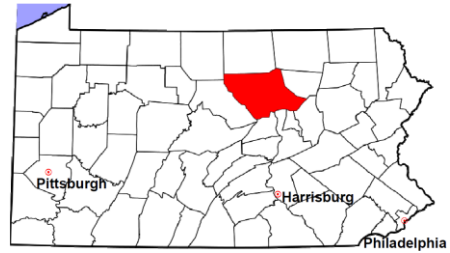
Cases Pending 12/31/2011 35

PFA New Cases Filed, 2002-2011

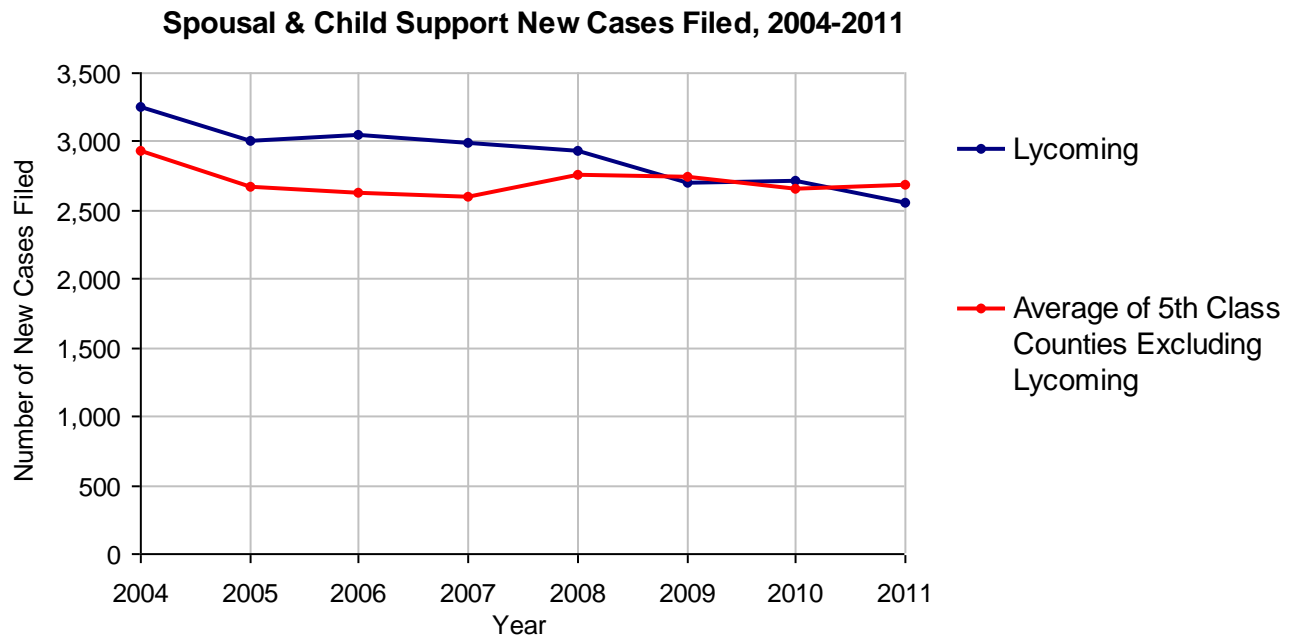


Lycoming County

2011 Population Estimate: 116,747
 Class of County: 5th
 No. of Common Pleas Court Judgeships: 5



2011 Spousal & Child Support	No. of Petitions	
Cases Pending 1/1/2011	197	
New Cases Filed in 2011	2,556	
Dockets Transferred In (+)	28	
Dockets Transferred Out (-)	30	
Cases Available for Processing	2,751	
Processed By:		
Judge	14	0.5%
Intake Officer	2,265	87.6%
Hearing Officer	306	11.8%
Other	0	
Cases Processed	2,585	100.0%
Cases Pending 12/31/2011	166	

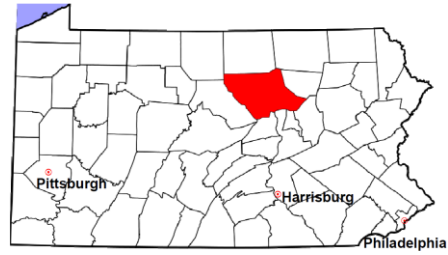


Lycoming County

2011 Population Estimate: 116,747

Class of County: 5th

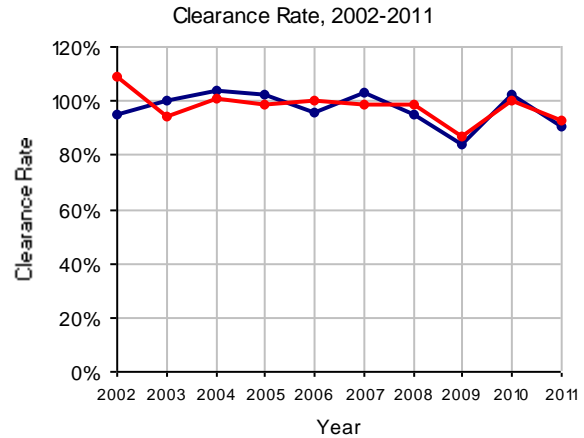
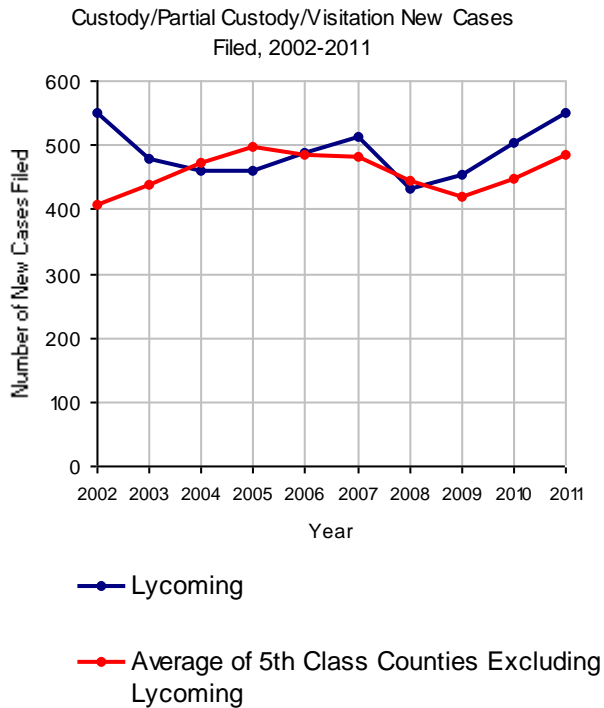
No. of Common Pleas Court Judgeships: 5



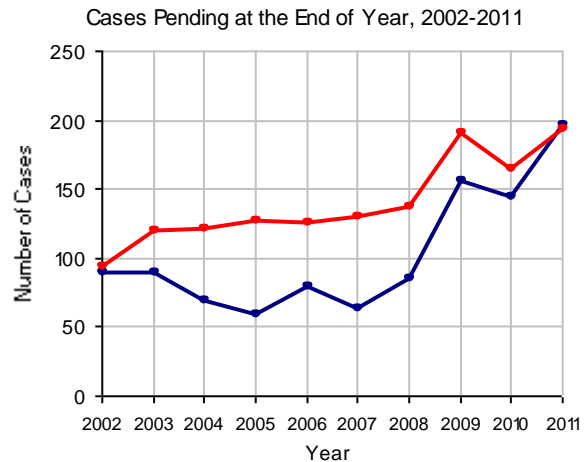
2011 Custody/Partial Custody/Visitation

No. of
Petitions

Cases Pending 1/1/2011	145
New Cases Filed in 2011	549
Cases Available for Processing	694
Processed By:	
Judge	73 14.7%
Non-Judicial Officer	353 70.9%
Other	72 14.5%
Cases Processed	498 100.0%
Cases Pending 12/31/2011	196

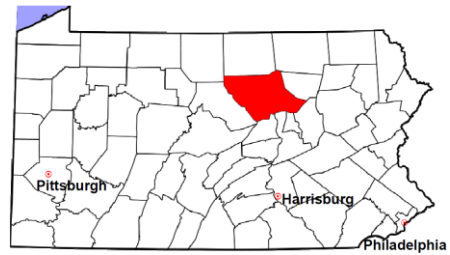


Note: Clearance Rate = Cases Processed / New Cases Filed



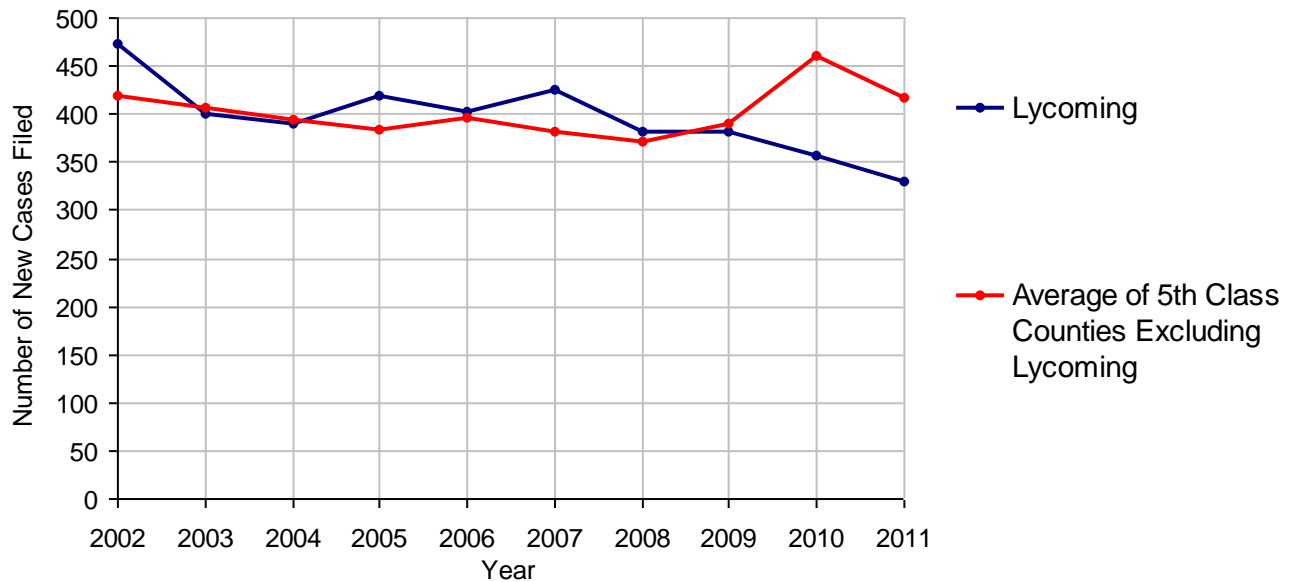
Lycoming County

2011 Population Estimate: 116,747
 Class of County: 5th
 No. of Common Pleas Court Judgeships: 5



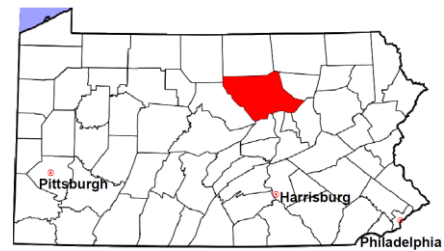
2011 Divorce	No. of Petitions	
Cases Pending 1/1/2011	1,404	
New Cases Filed in 2011	329	
Cases Available for Processing	1,733	
Processed By:		
Contested Before a Judge	15	4.5%
Contested Before a Master	0	
Uncontested	290	86.8%
Other	29	8.7%
Cases Processed	334	100.0%
Cases Pending 12/31/2011	1,399	

Divorce New Cases Filed, 2002-2011



Lycoming County

2011 Population Estimate: 116,747
 Class of County: 5th
 No. of Common Pleas Court Judgeships: 5



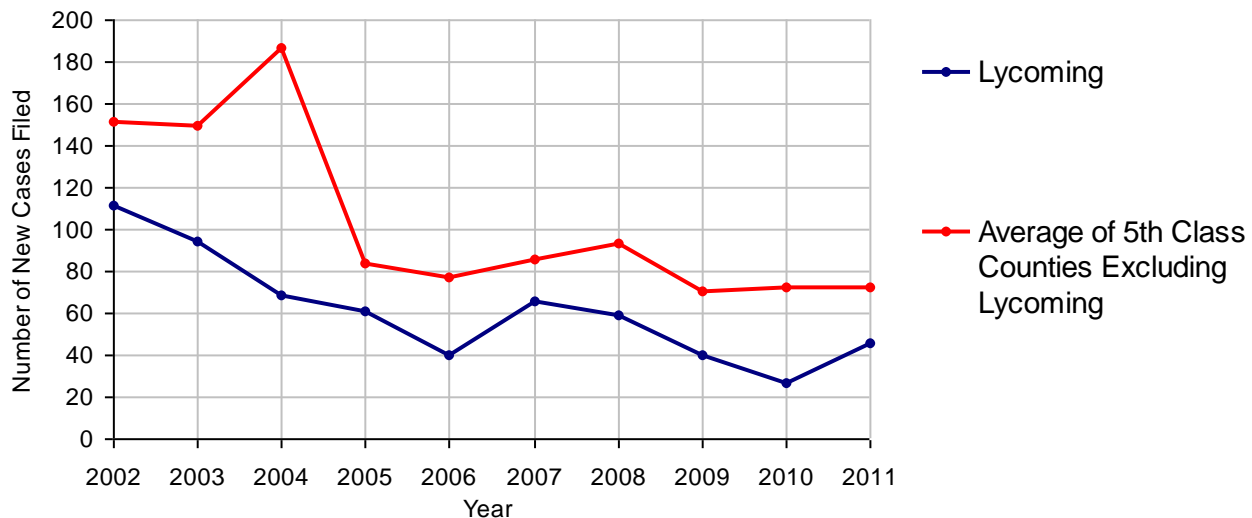
2011 Juvenile Dependency - Active Dependent Inventory



	Abuse/ Neglect	Status Offenses	Total
Cases Pending 1/1/2011	25	0	25
New Petitions Filed in 2011	46	0	46
Other	1	0	1
Total Petitions Available for Processing	72	0	72
Processed by:			
Adjudicated Dependent			
Judge	24	0	24
Master	12	0	12
Adjudicated NOT Dependent			
Judge	0	0	0
Master	0	0	0
Withdrawn/Dismissed/Inactive	0	0	0
Other	12	0	12
Total Petitions Processed	48	0	48
Cases Pending 12/31/2011	24	0	24

Data provided by CPCMS

Abuse/Neglect and Status Offenses New Cases Filed, 2002-2011



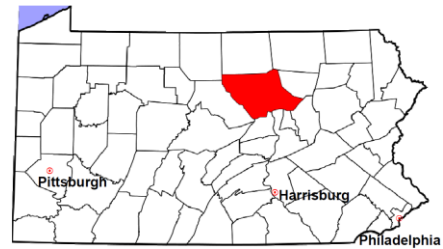
Note: Dependency data for 2002-2010 were collected manually. Dependency data for 2011 were provided by CPCMS.

Lycoming County

2011 Population Estimate: 116,747

Class of County: 5th

No. of Common Pleas Court Judgeships: 5



2011 Juvenile Dependency - Adjudicated Dependent Inventory

	Abuse/ Neglect	Status Offenses	Total	
Cases Pending 1/1/2011	91	4	95	
New Adjudicated Dependent Cases	36	0	36	
Other	8	0	8	
Total Adjudicated Dependent Cases	135	4	139	
<u>Court Supervision Terminated:</u>				
Family Reunification	1	0	1	2.5%
Adoption	20	0	20	50.0%
Placement with a Relative/Guardian	12	1	13	32.5%
Aged Out	3	0	3	7.5%
Other Permanency Outcomes*	0	0	0	
Other**	3	0	3	7.5%
Total Adjudicated Dependent Cases Terminated	39	1	40	100.0%
Cases Pending 12/31/2011	96	3	99	

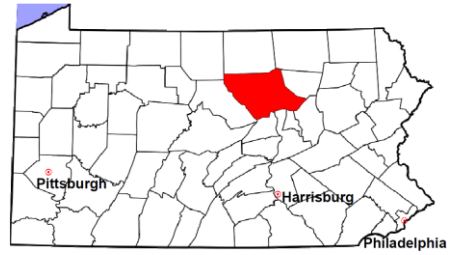
Data provided by CPCMS

* Other Permanency Outcomes include: adjudicated delinquent, death due to natural causes, emancipation, permanent living arrangement, and parent has come forward.

** Other includes cases where Court Supervision is terminated due to transfer out of jurisdiction, withdrawal and administrative closures.

Lycoming County

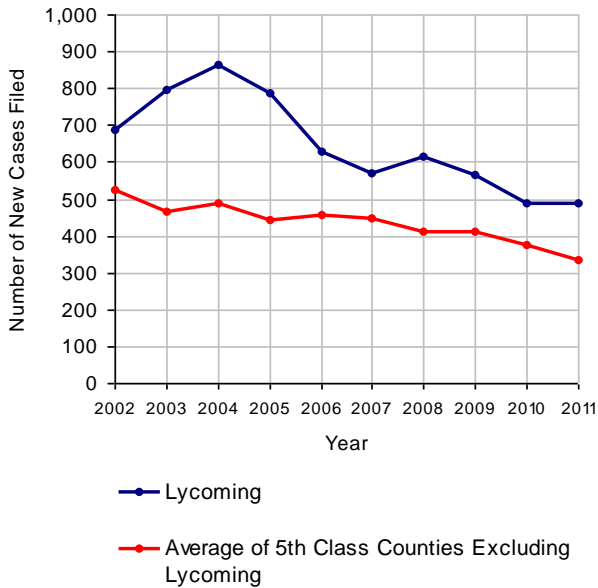
2011 Population Estimate: 116,747
 Class of County: 5th
 No. of Common Pleas Court Judgeships: 5



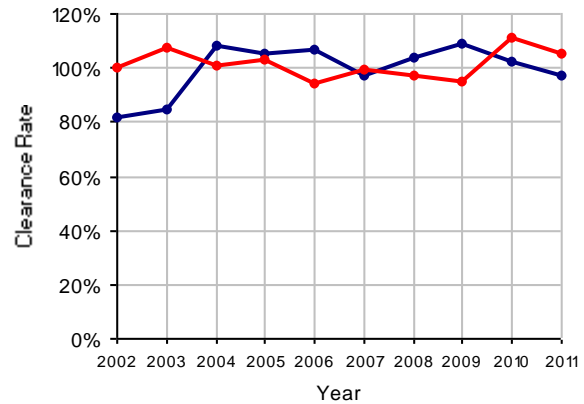
2011 Juvenile Delinquency

	No. of Cases
Cases Pending 1/1/2011	35
New Cases Filed in 2011	489
Cases Available for Processing	524
Processed By:	
Judge	345 72.3%
Non-Judicial Officer	132 27.7%
Other	0
Cases Processed	477 100.0%
Cases Pending 12/31/2011	47

Juvenile Delinquency New Cases Filed, 2002-2011

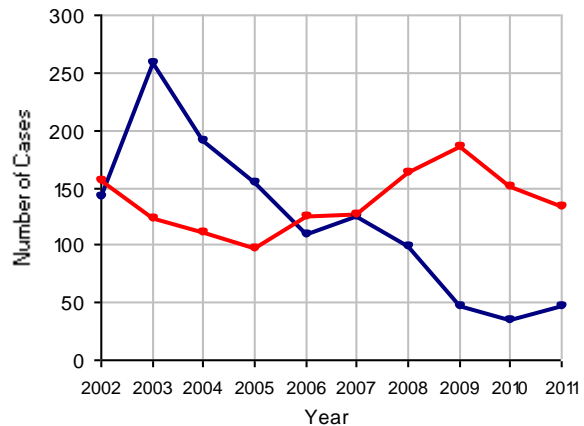


Clearance Rate, 2002-2011



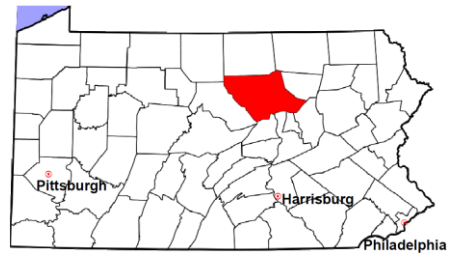
Note: Clearance Rate = Cases Processed / New Cases Filed

Cases Pending at the End of Year, 2002-2011



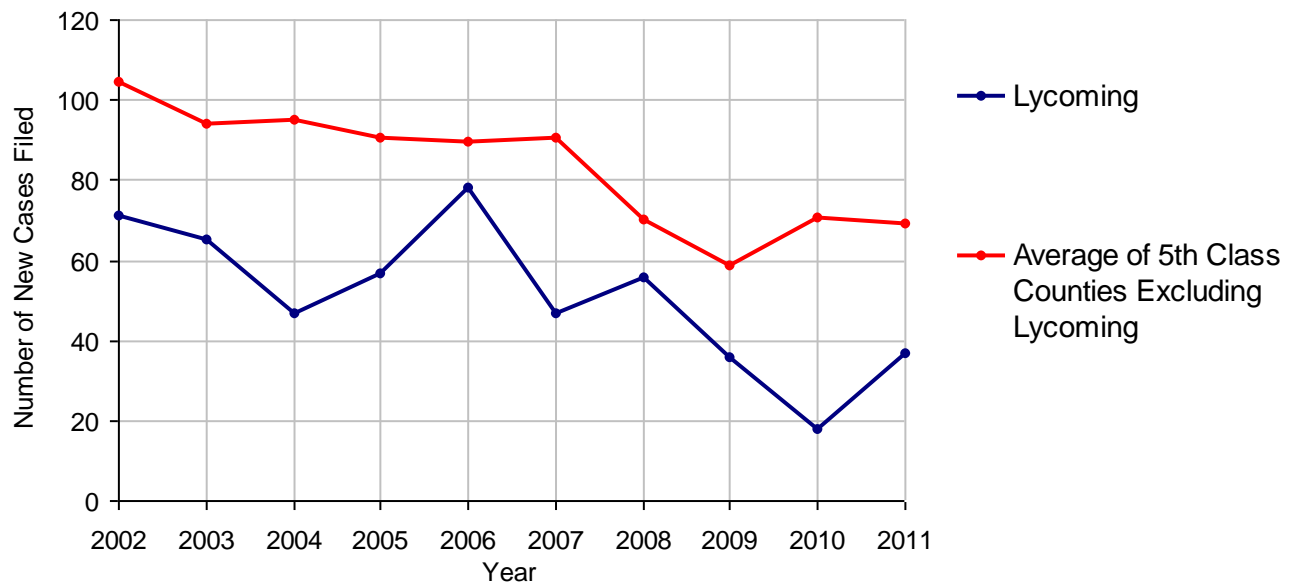
Lycoming County

2011 Population Estimate: 116,747
 Class of County: 5th
 No. of Common Pleas Court Judgeships: 5



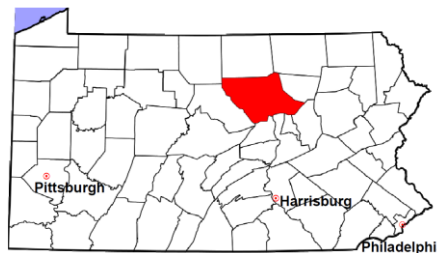
2011 Accounts	No. of Cases	
Cases Pending 1/1/2011	1	
New Cases Filed in 2011	37	
Cases Available for Processing	38	
Processed By:		
Contested before a Judge	0	
Contested before a Non-judicial Officer	0	
Uncontested	32	100.0%
Other	0	
Cases Processed	32	100.0%
Cases Pending 12/31/2011	6	

Accounts New Cases Filed, 2002-2011



Lycoming County

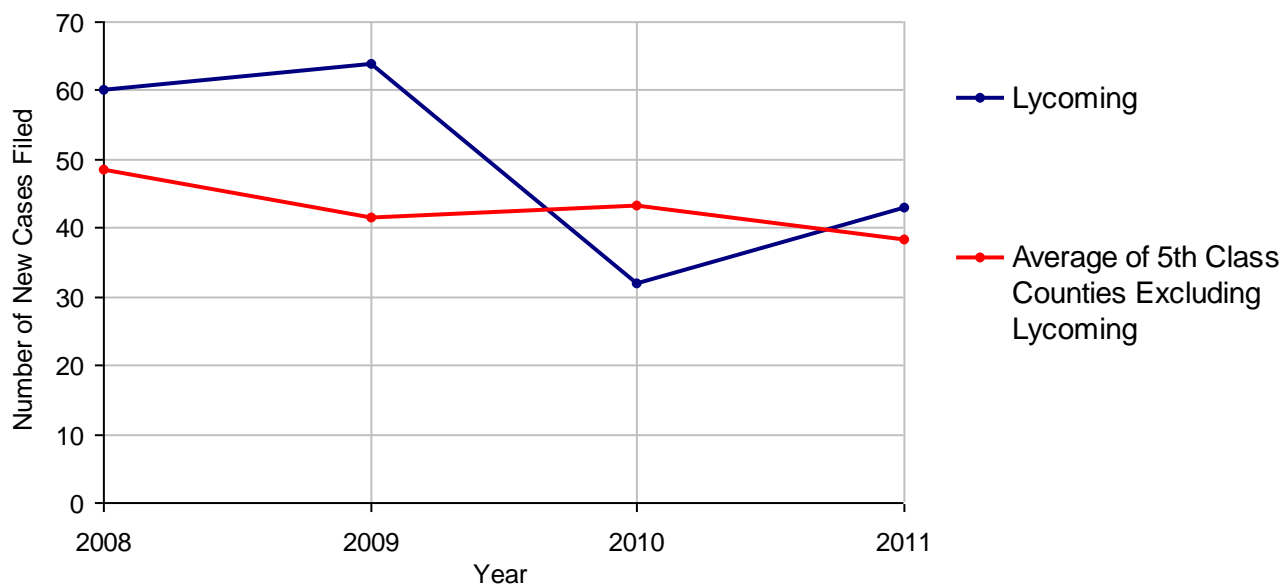
2011 Population Estimate: 116,747
 Class of County: 5th
 No. of Common Pleas Court Judgeships: 5



2011 Adoptions		No. of Cases	
Cases Pending 1/1/2011		26 (R)	
New Cases Filed in 2011		43	
Cases Available for Processing		69	
Processed By:			
Contested before a Judge	Granted	0	
	Denied	0	
Uncontested	Granted	38	100.0%
	Denied	0	
Other		0	
Cases Processed		38	100.0%
Cases Pending 12/31/2011		31	

(R) - Revised

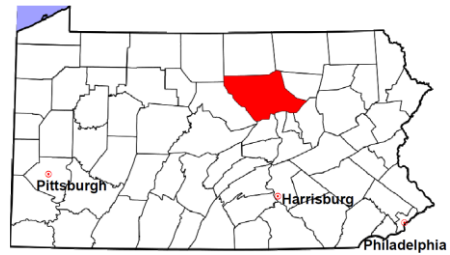
Adoptions New Cases Filed, 2008-2011



Note: Prior to 2008, each petition was counted as one new case, regardless of the number of children listed on the petition. Starting in 2008, each child listed on a petition is counted as a separate case. Therefore, statistics for the years since 2008 should not be compared to those for the years prior to 2008.

Lycoming County

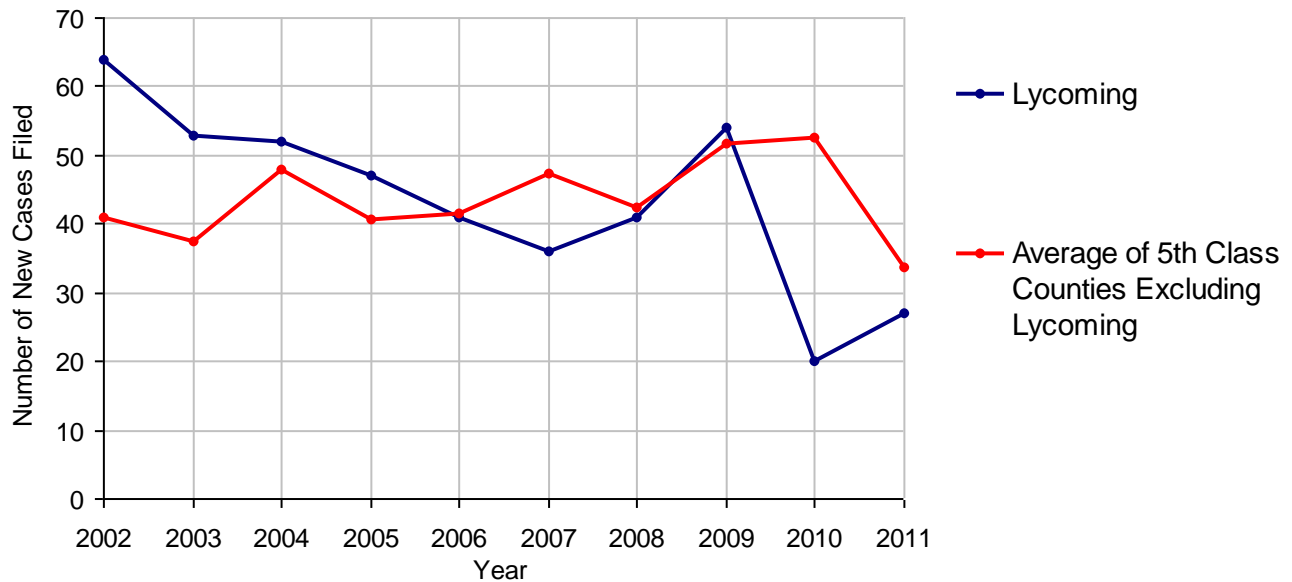
2011 Population Estimate: 116,747
 Class of County: 5th
 No. of Common Pleas Court Judgeships: 5



2011 Relinquishments/Terminations	No. of Cases
Cases Pending 1/1/2011	90 (R)
New Cases Filed in 2011	27
Cases Available for Processing	117
Processed By:	
Contested before a Judge	0
Uncontested	29 100.0%
Other	0
Cases Processed	29 100.0%
Cases Pending 12/31/2011	88

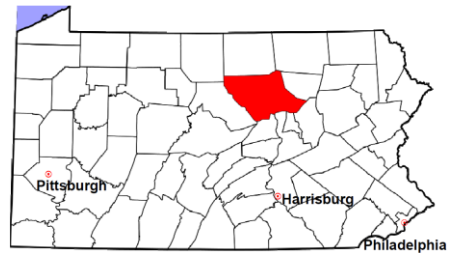
(R) - Revised

Relinquishments/Terminations New Cases Filed, 2002-2011



Lycoming County

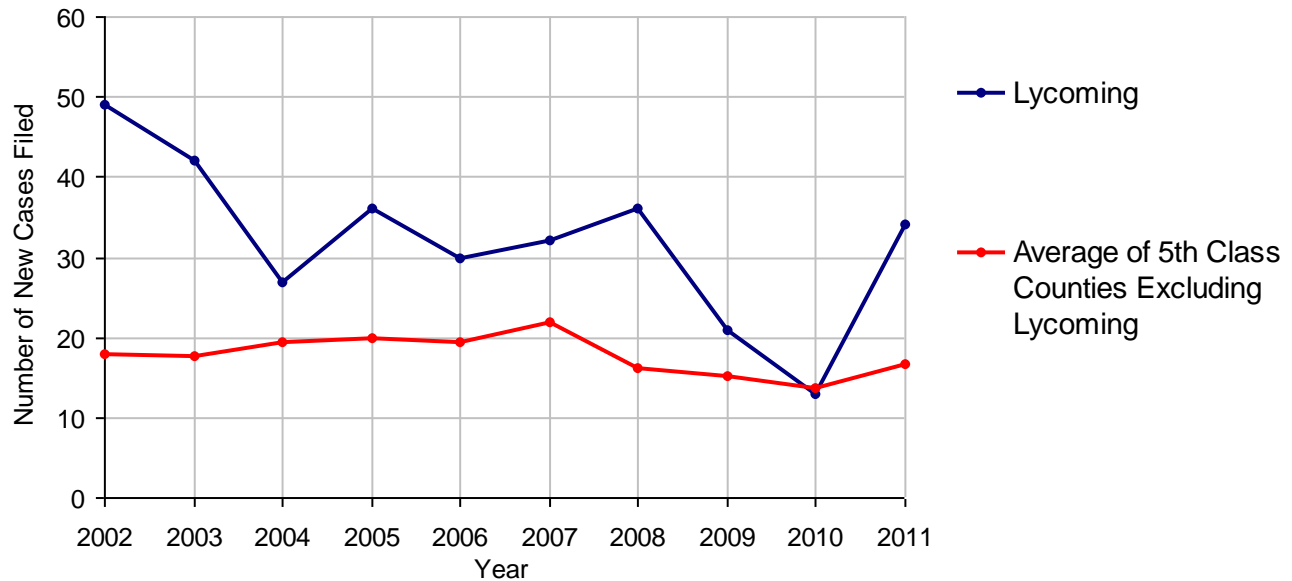
2011 Population Estimate: 116,747
 Class of County: 5th
 No. of Common Pleas Court Judgeships: 5



2011 Appointment of Guardians

	No. of Cases
Cases Pending 1/1/2011	3
New Cases Filed in 2011	34
Cases Available for Processing	37
Processed By:	
Contested before a Judge	0
Uncontested	19 100.0%
Other	0
Cases Processed	19 100.0%
Cases Pending 12/31/2011	18

Appointment of Guardians New Cases Filed, 2002-2011

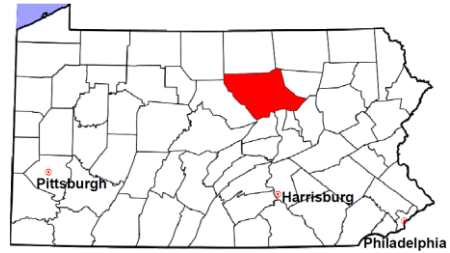


Lycoming County

2011 Population Estimate: 116,747

Class of County: 5th

No. of Common Pleas Court Judgeships: 5



2011 Jury Activity and Performance Measures

A. Juror Days	3,180	
B. Number Sent to Voir Dire	3,375	
Voir Dire Attendance Rate (B/A * 100)		106.1%
C. Number of Jurors Selected	1,076	
Juror Selection Rate (C/B * 100)		31.9%

Note: In mid-2011, AOPC began utilizing the National Center for State Courts' Jury Managers' Toolbox for collecting jury data. This has resulted in limited jury performance measures being reported for 2011. Additional data will be available in 2012.