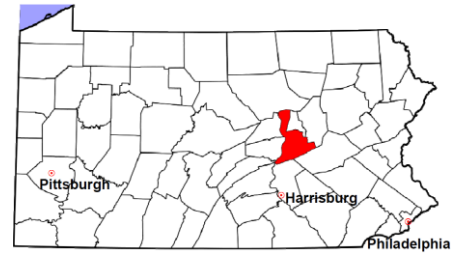


Northumberland County

2011 Population Estimate: 94,558

Class of County: 5th

No. of Common Pleas Court Judgeships: 3



2011 Criminal	No. of Cases
----------------------	---------------------

Cases Pending 1/1/2011	591
New Cases Filed in 2011	1,424
Reopened Cases	54
Cases Available for Disposition	2,069

Disposed by:

Withdrawn/Dismissed	56	4.0%
ARD	293	20.9%
Guilty Plea	901	64.3%
Non-Jury Trial	4	0.3%
Jury Trial	5	0.4%
Inactive	63	4.5%
Other	79	5.6%
Total Cases Disposed	1,401	100.0%

Cases Pending 12/31/2011 **668**

Cases Awaiting Sentencing 69

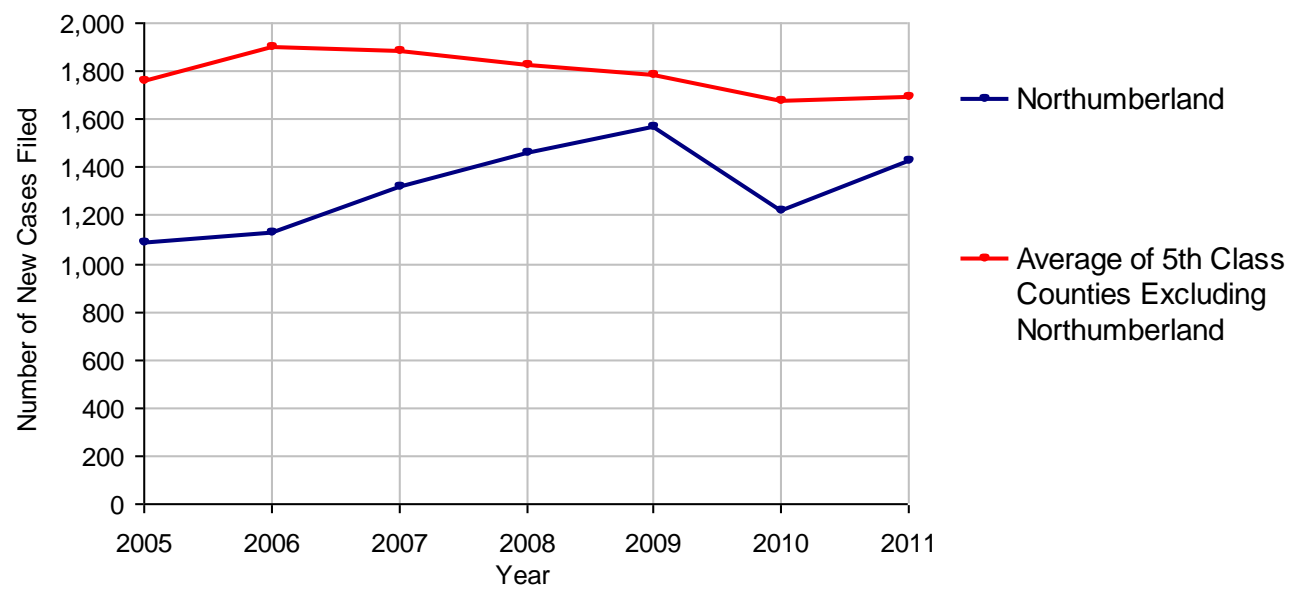
Data provided by CPCMS



Age of Pending Cases as of 12/31/2011

0-60 Days	250	37.4%
61-120 Days	186	27.8%
121-180 Days	82	12.3%
181-240 Days	29	4.3%
241-300 Days	33	4.9%
301-360 Days	17	2.5%
Over 360 Days	71	10.6%
Total	668	100.0%

Criminal New Cases Filed, 2005-2011

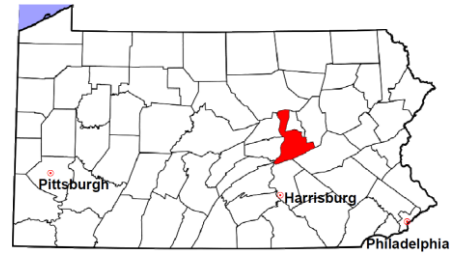


Northumberland County

2011 Population Estimate: 94,558

Class of County: 5th

No. of Common Pleas Court Judgeships: 3



2011 Criminal - New Cases by Case Type



Case Type	Felony	Misdemeanor	Summary /Ungraded	Total
Person	95	171	0	266
Property	147	172	0	319
Drug	66	118	0	184
Weapon	4	5	0	9
Public Order	126	150	0	276
Motor Vehicle - DWI/DUI	0	360	0	360
Motor Vehicle - Other	1	9	0	10
Other	0	0	0	0
Total	439	985	0	1,424
	30.8%	69.2%		100.0%

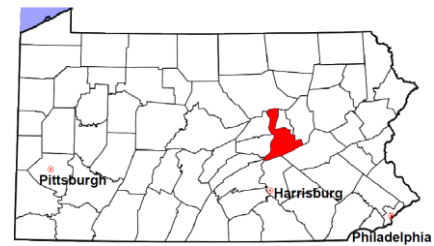
Data provided by CPCMS

Northumberland County

2011 Population Estimate: 94,558

Class of County: 5th

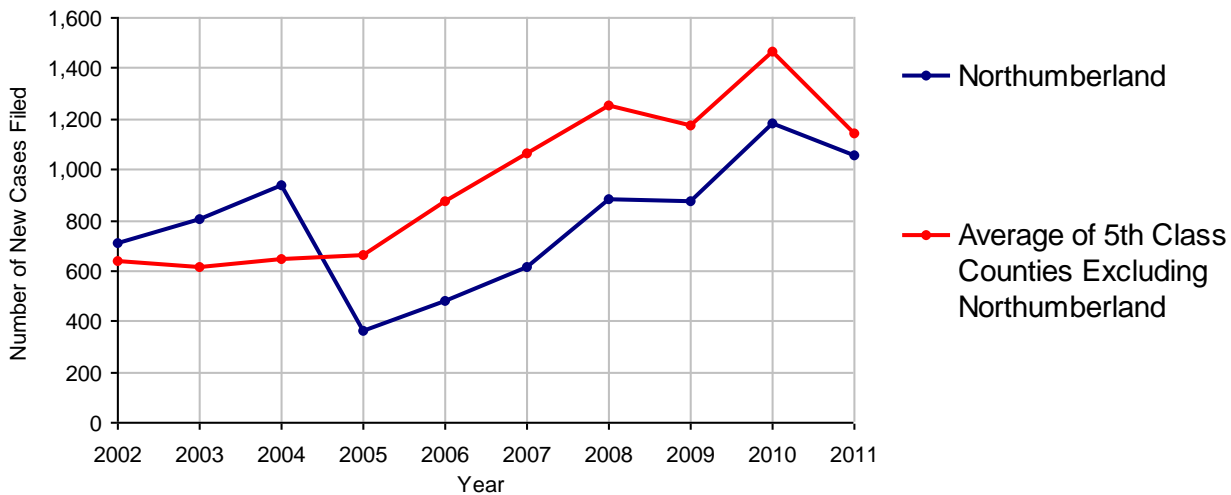
No. of Common Pleas Court Judgeships: 3



2011 Civil	Civil Action	Other	Total
Cases Pending 1/1/2011	546	296	842
Docketed Cases	711	346	1,057
Arbitration Appeals	0	1	1
Transferred In	0	1	1
Returned to Active	0	0	0
Cases Available for Processing	1,257	644	1,901
Disposed By:			
Default Judgments	359	172	531
Cases Decided by Arbitration Board	14	4	18
Dispositive Motions	3	0	3
Settlements	227	80	307
Moved to Inactive Status	3	1	4
Transferred/Withdrawn	0	1	1
Pa.R.J.A. 1901 Administrative Purge	0	0	0
Other	2	0	2
Jury Trial	1	0	1
Non-Jury Trial	2	0	2
Total Cases Disposed	611	258	869
Cases Pending 12/31/2011	646	386	1,032

Age of Pending Cases as of 12/31/2011 (Civil Action Only)		
0-6 months	269	41.6%
7-12 months	168	26.0%
13-18 months	71	11.0%
19-24 months	56	8.7%
25-30 months	44	6.8%
31-36 months	5	0.8%
37-42 months	2	0.3%
43-48 months	15	2.3%
49-54 months	9	1.4%
55-60 months	6	0.9%
61-66 months	1	0.2%
67-72 months	0	
Over 72 months	0	
Total	646	100.0%

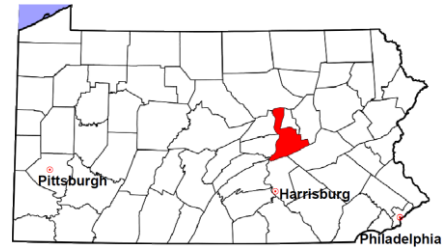
Docketed Cases, 2002-2011



Note: Prior to June 2010, docketed cases under the "Other" category were not reported. The inclusion of these cases starting from June 2010 may contribute to an increase in docketed cases from 2009 to 2010.

Northumberland County

2011 Population Estimate: 94,558
 Class of County: 5th
 No. of Common Pleas Court Judgeships: 3



2011 Civil - Docketed Cases Listed by Case Type

TORT (does not include mass tort)

Intentional	9
Malicious Prosecution	0
Motor Vehicle	72
Nuisance	6
Premise Liability	23
Product Liability	2
Slander/Libel/Defamation	0
Other	33

MASS TORT

Asbestos	0
Tobacco	0
Toxic Tort - DES	0
Toxic Tort - Implant	0
Toxic Waste	0
Other	0

PROFESSIONAL LIABILITY

Dental	1
Legal	0
Medical Malpractice	7
Other	0

CONTRACT

(does not include judgments)

Buyer Plaintiff	5
Debt Collection:	
Credit Card	375
Other	138
Employment Dispute:	
Discrimination	0
Other	5
Other	29

REAL PROPERTY

Ejectment*	29
Eminent Domain/ Condemnation*	1
Ground Rent	3
Landlord/Tenant Dispute	3
Mortgage Forclosures:	
Residential*	181
Commercial*	12
Partition of Real Property*	2
Quiet Title*	11
Other*	9

CIVIL APPEALS

Administrative Agencies

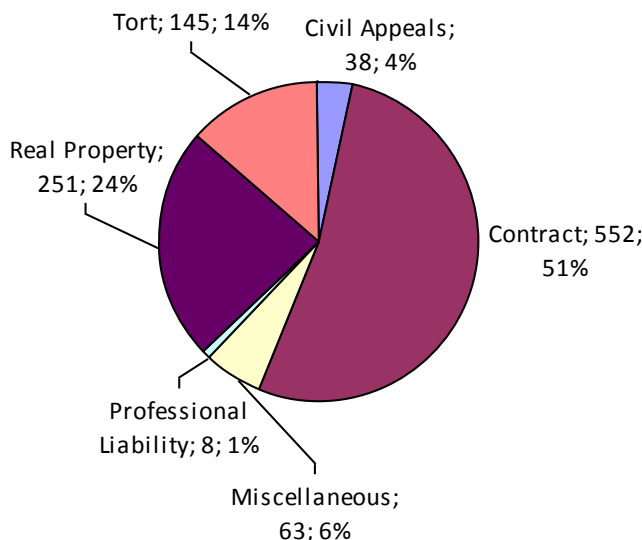
Board of Assessment*	0
Board of Elections*	3
Dept. of Transportation*	24
Zoning Board*	1
Statutory Appeal - Other*	4
Other*	6

MISCELLANEOUS

Common Law/ Statutory Arbitration*	0
Declaratory Judgment*	3
Mandamus*	0
Non-Domestic Relations Restraining Order*	0
Quo Warranto*	0
Replevin*	2
Other*	58

TOTAL DOCKETED CASES:
1,057

* Civil Other



Of the Docketed Cases:

Pro Se Filings:	76	7.2%
Class Action Suits:	0	
MDJ Appeals:	46	4.4%

Northumberland County

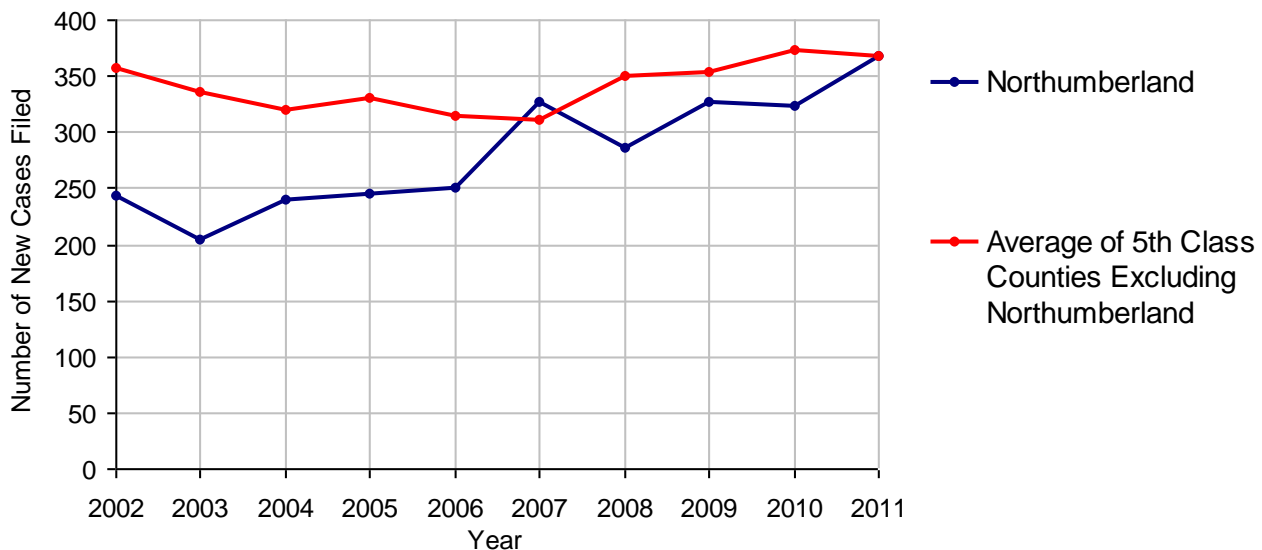
2011 Population Estimate: 94,558
 Class of County: 5th
 No. of Common Pleas Court Judgeships: 3



2011 Protection From Abuse

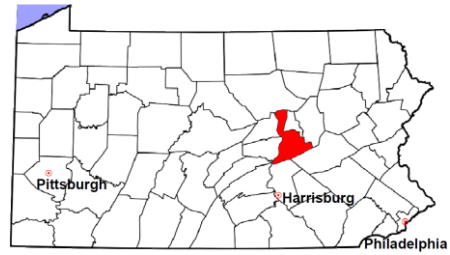
	No. of Petitions
Cases Pending 1/1/2011	6
New Cases Filed in 2011	368
<i>Of these, Petitions Requesting Temporary Orders: 367 (99.7%)</i>	
<i>Temporary Orders DENIED: 72 (19.6%), Temporary Orders GRANTED: 295 (80.4%)</i>	
Cases Available for Processing	374
Processed By:	
Temporary Order DENIED After Ex Parte Hearing and No Evidentiary Hearing Scheduled	72 19.7%
Temporary Order DISMISSED After Evidentiary Hearing and No Final Order Entered	3 0.8%
Final Order DENIED After Evidentiary Hearing Before a Judge	20 5.5%
Final Order GRANTED After Evidentiary Hearing Before a Judge	47 12.8%
Plaintiff Did Not Appear For Evidentiary Hearing	37 10.1%
Final Order by STIPULATION OR AGREEMENT Between the Parties	102 27.9%
Petition WITHDRAWN by Plaintiff	85 23.2%
TRANSFERRED to Another Jurisdiction	0
DECEASED Party	0
Other	0
Cases Processed	366 100.0%
Cases Pending 12/31/2011	8

PFA New Cases Filed, 2002-2011

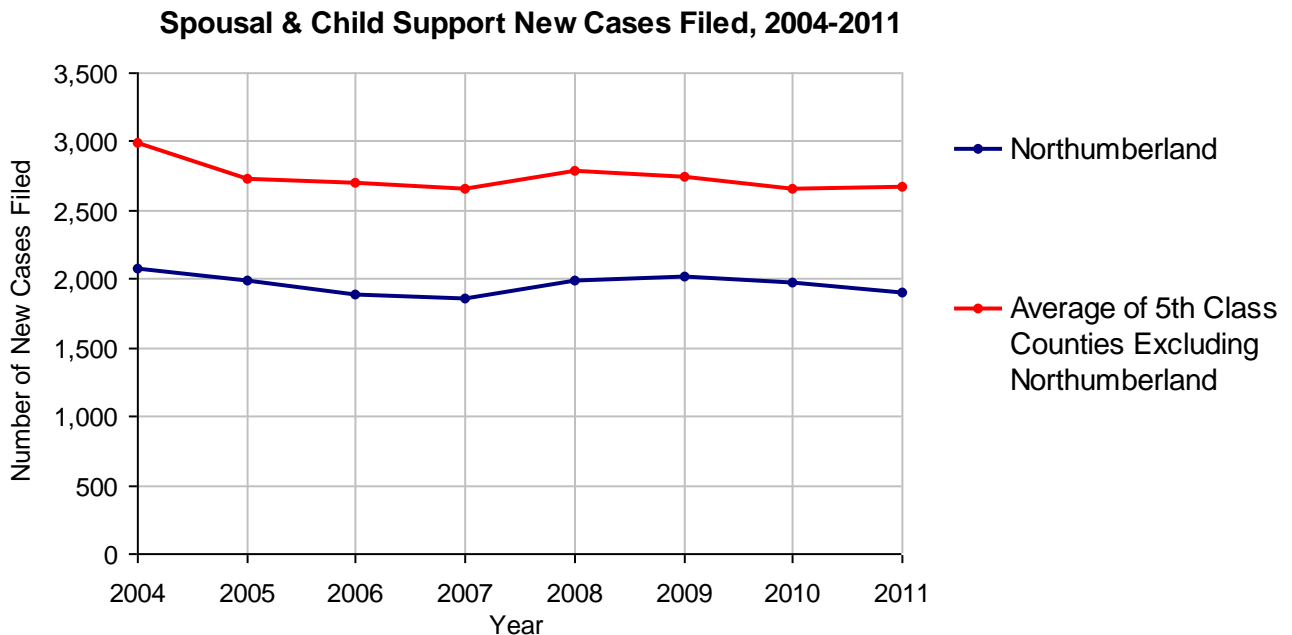


Northumberland County

2011 Population Estimate: 94,558
 Class of County: 5th
 No. of Common Pleas Court Judgeships: 3



2011 Spousal & Child Support	No. of Petitions	
Cases Pending 1/1/2011	274	
New Cases Filed in 2011	1,897	
Dockets Transferred In (+)	37	
Dockets Transferred Out (-)	25	
Cases Available for Processing	2,183	
Processed By:		
Judge	66	3.5%
Intake Officer	1,773	93.6%
Hearing Officer	56	3.0%
Other	0	
Cases Processed	1,895	100.0%
Cases Pending 12/31/2011	288	

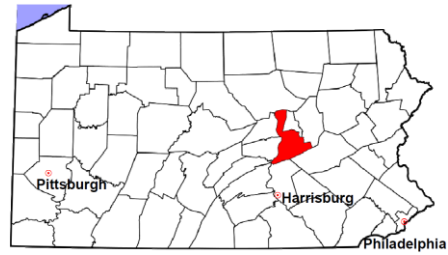


Northumberland County

2011 Population Estimate: 94,558

Class of County: 5th

No. of Common Pleas Court Judgeships: 3



2011 Custody/Partial Custody/Visitation

No. of
Petitions

Cases Pending 1/1/2011

101

New Cases Filed in 2011

542

Cases Available for Processing

643

Processed By:

Judge

31

6.1%

Non-Judicial Officer

409

80.7%

Other

67

13.2%

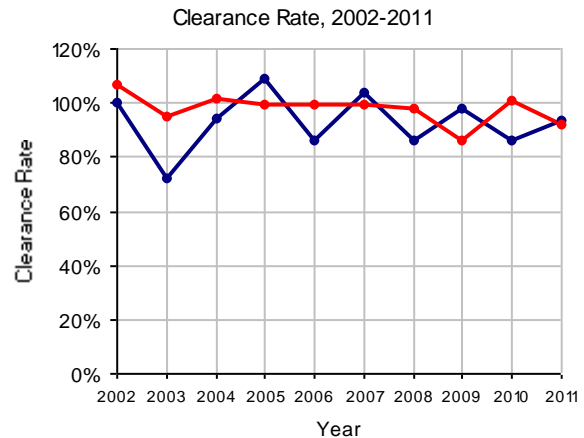
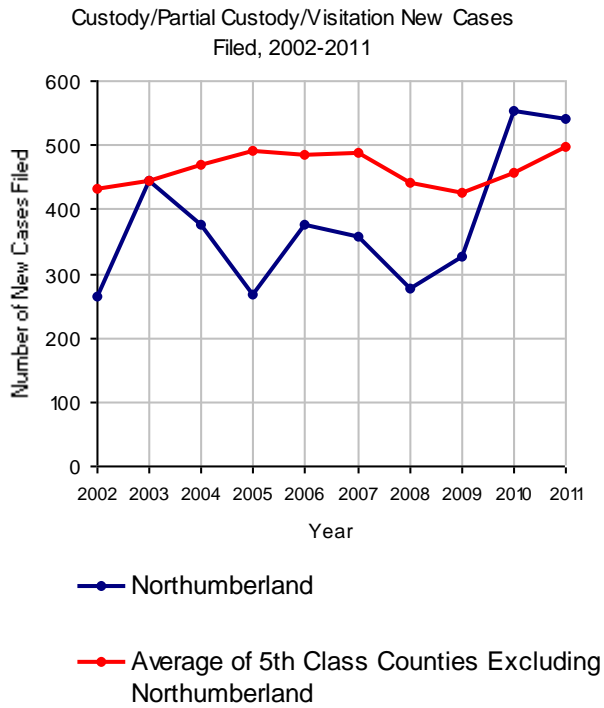
Cases Processed

507

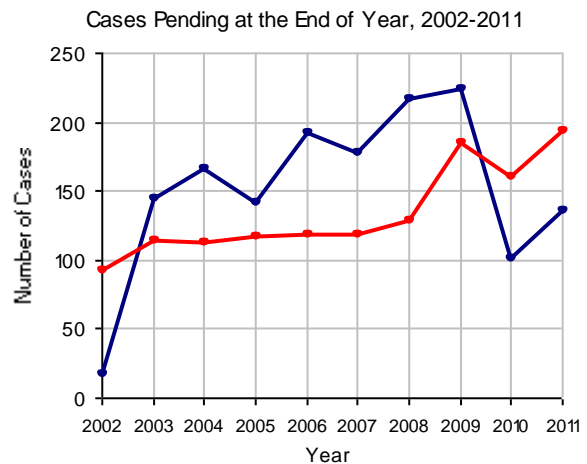
100.0%

Cases Pending 12/31/2011

136

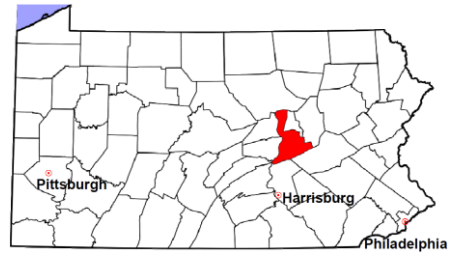


Note: Clearance Rate = Cases Processed / New Cases Filed



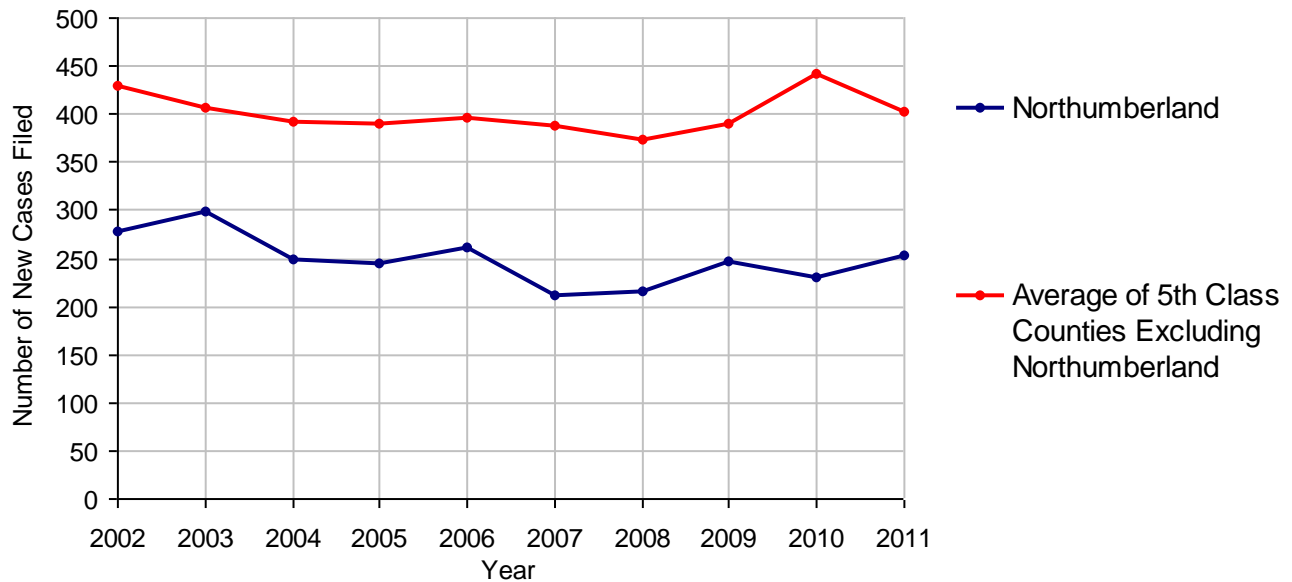
Northumberland County

2011 Population Estimate: 94,558
 Class of County: 5th
 No. of Common Pleas Court Judgeships: 3



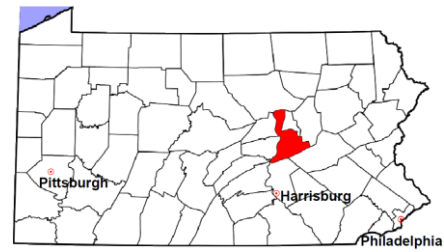
2011 Divorce	No. of Petitions	
Cases Pending 1/1/2011	818	
New Cases Filed in 2011	254	
Cases Available for Processing	1,072	
Processed By:		
Contested Before a Judge	15	8.5%
Contested Before a Master	148	84.1%
Uncontested	9	5.1%
Other	4	2.3%
Cases Processed	176	100.0%
Cases Pending 12/31/2011	896	

Divorce New Cases Filed, 2002-2011



Northumberland County

2011 Population Estimate: 94,558
 Class of County: 5th
 No. of Common Pleas Court Judgeships: 3



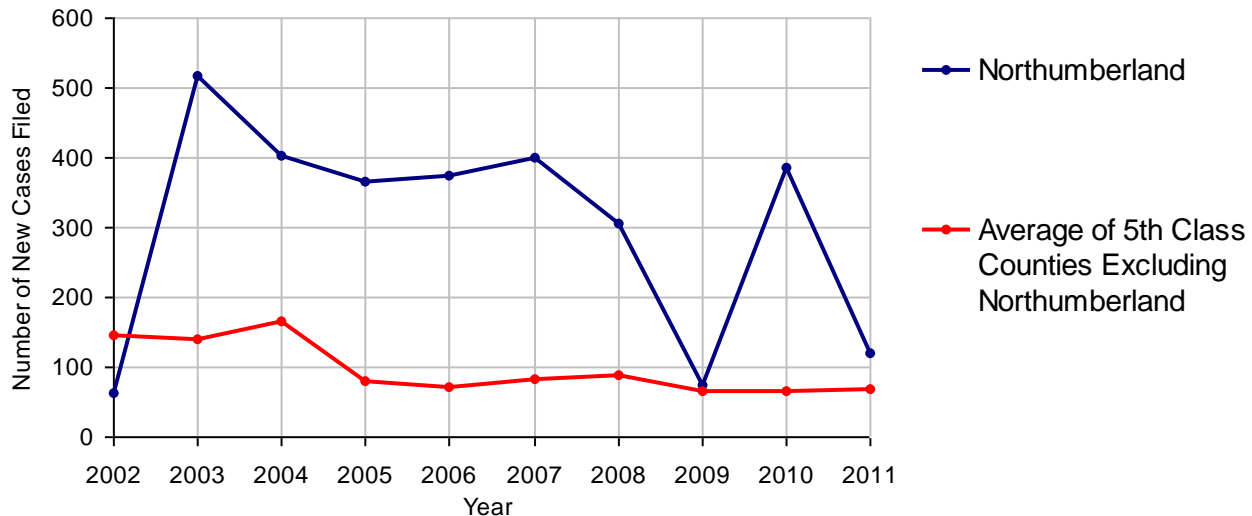
2011 Juvenile Dependency - Active Dependent Inventory



	Abuse/ Neglect	Status Offenses	Total
Cases Pending 1/1/2011	5	0	5
New Petitions Filed in 2011	120	0	120
Other	5	0	5
Total Petitions Available for Processing	130	0	130
Processed by:			
Adjudicated Dependent			
Judge	108	0	108
Master	0	0	0
Adjudicated NOT Dependent			
Judge	4	0	4
Master	0	0	0
Withdrawn/Dismissed/Inactive	0	0	0
Other	10	0	10
Total Petitions Processed	122	0	122
Cases Pending 12/31/2011	8	0	8

Data provided by CPCMS

Abuse/Neglect and Status Offenses New Cases Filed, 2002-2011



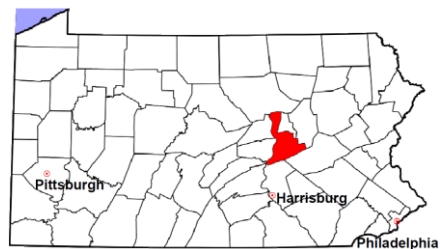
Note: (1) Dependency data for 2002-2010 were collected manually. Dependency data for 2011 were provided by CPCMS. (2) A sharp increase or decrease may reflect changes in practice or counting methods.

Northumberland County

2011 Population Estimate: 94,558

Class of County: 5th

No. of Common Pleas Court Judgeships: 3



2011 Juvenile Dependency - Adjudicated Dependent Inventory



	Abuse/ Neglect	Status Offenses	Total	
Cases Pending 1/1/2011	232	2	234	
New Adjudicated Dependent Cases	108	0	108	
Other	19	0	19	
Total Adjudicated Dependent Cases	359	2	361	
<u>Court Supervision Terminated:</u>				
Family Reunification	24	0	24	30.0%
Adoption	16	0	16	20.0%
Placement with a Relative/Guardian	21	0	21	26.3%
Aged Out	7	0	7	8.8%
Other Permanency Outcomes*	0	0	0	
Other**	12	0	12	15.0%
Total Adjudicated Dependent Cases Terminated	80	0	80	100.0%
Cases Pending 12/31/2011	279	2	281	

Data provided by CPCMS

* Other Permanency Outcomes include: adjudicated delinquent, death due to natural causes, emancipation, permanent living arrangement, and parent has come forward.

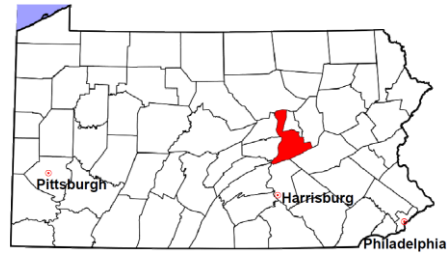
** Other includes cases where Court Supervision is terminated due to transfer out of jurisdiction, withdrawal and administrative closures.

Northumberland County

2011 Population Estimate: 94,558

Class of County: 5th

No. of Common Pleas Court Judgeships: 3

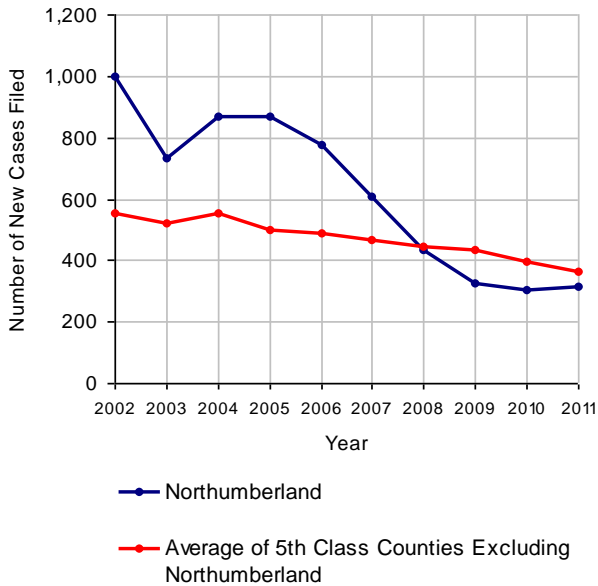


2011 Juvenile Delinquency

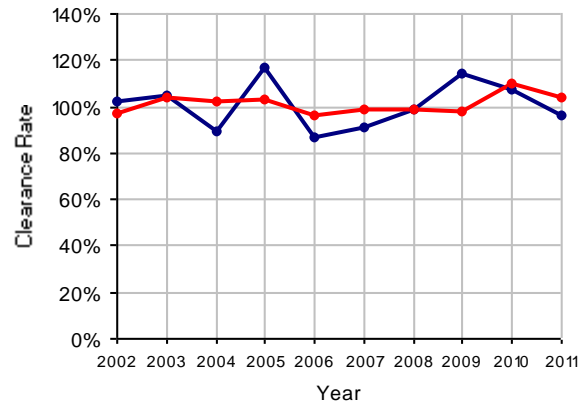
No. of Cases

Cases Pending 1/1/2011	70
New Cases Filed in 2011	314
Cases Available for Processing	384
Processed By:	
Judge	93 30.7%
Non-Judicial Officer	202 66.7%
Other	8 2.6%
Cases Processed	303 100.0%
Cases Pending 12/31/2011	81

Juvenile Delinquency New Cases Filed, 2002-2011

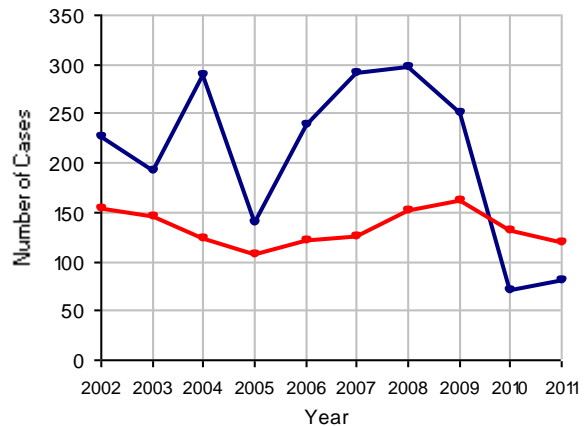


Clearance Rate, 2002-2011



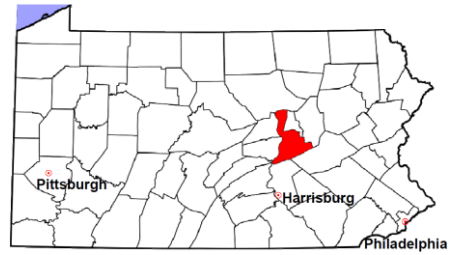
Note: Clearance Rate = Cases Processed / New Cases Filed

Cases Pending at the End of Year, 2002-2011



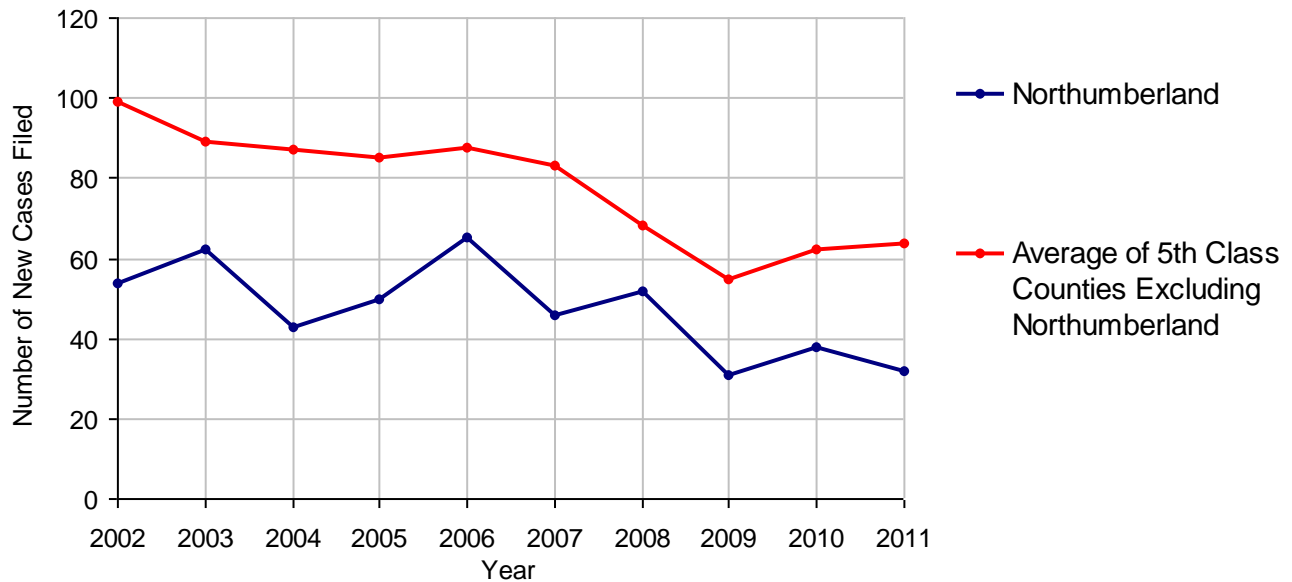
Northumberland County

2011 Population Estimate: 94,558
 Class of County: 5th
 No. of Common Pleas Court Judgeships: 3



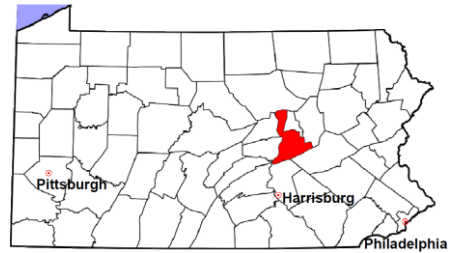
2011 Accounts	No. of Cases	
Cases Pending 1/1/2011	2	
New Cases Filed in 2011	32	
Cases Available for Processing	34	
Processed By:		
Contested before a Judge	1	3.0%
Contested before a Non-judicial Officer	0	
Uncontested	27	81.8%
Other	5	15.2%
Cases Processed	33	100.0%
Cases Pending 12/31/2011	1	

Accounts New Cases Filed, 2002-2011



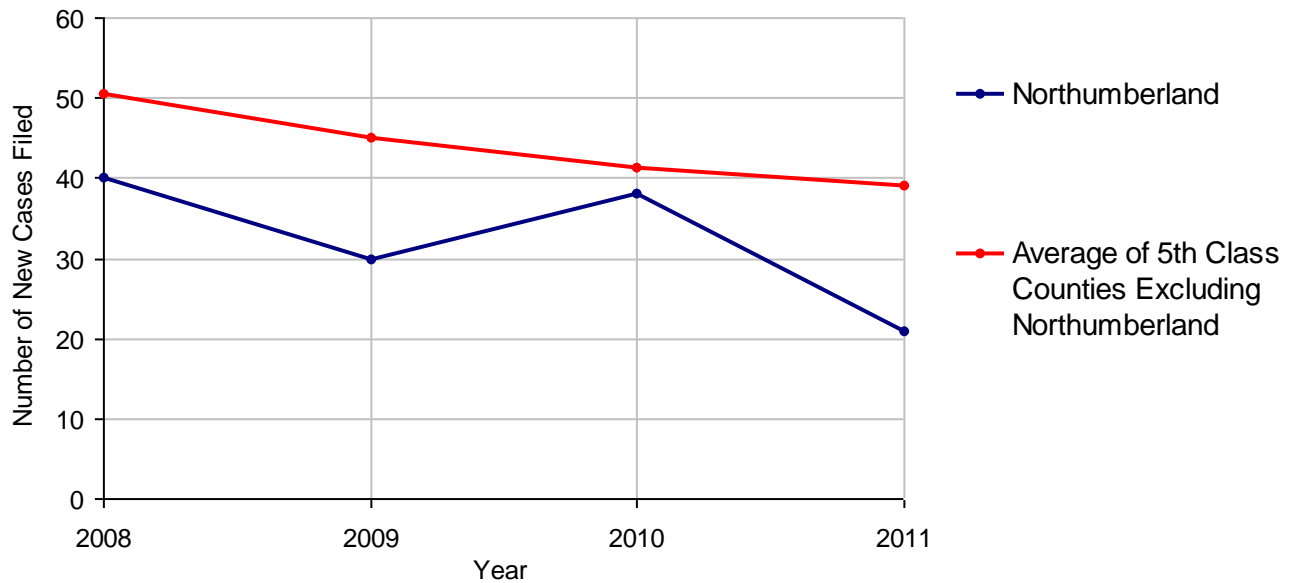
Northumberland County

2011 Population Estimate: 94,558
 Class of County: 5th
 No. of Common Pleas Court Judgeships: 3



2011 Adoptions		No. of Cases	
Cases Pending 1/1/2011		4	
New Cases Filed in 2011		21	
Cases Available for Processing		25	
Processed By:			
Contested before a Judge	Granted	0	
	Denied	0	
Uncontested	Granted	23	100.0%
	Denied	0	
Other		0	
Cases Processed		23	100.0%
Cases Pending 12/31/2011		2	

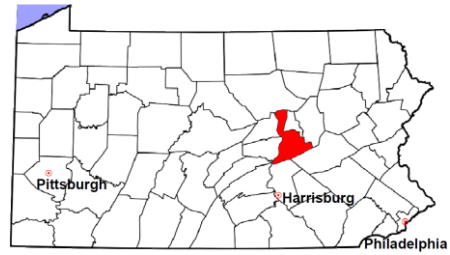
Adoptions New Cases Filed, 2008-2011



Note: Prior to 2008, each petition was counted as one new case, regardless of the number of children listed on the petition. Starting in 2008, each child listed on a petition is counted as a separate case. Therefore, statistics for the years since 2008 should not be compared to those for the years prior to 2008.

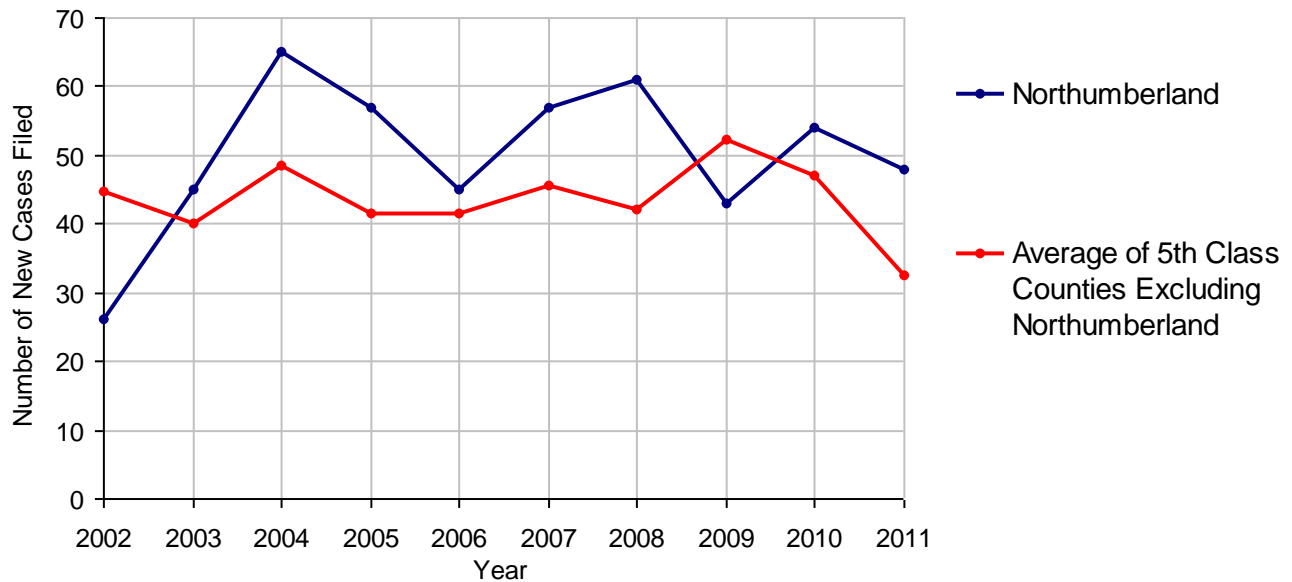
Northumberland County

2011 Population Estimate: 94,558
 Class of County: 5th
 No. of Common Pleas Court Judgeships: 3



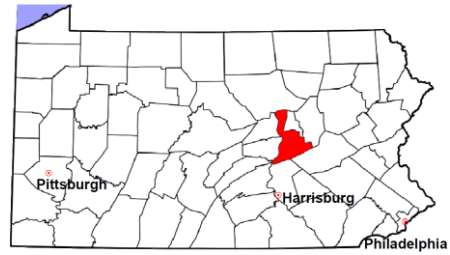
2011 Relinquishments/Terminations	No. of Cases	
Cases Pending 1/1/2011	8	
New Cases Filed in 2011	48	
Cases Available for Processing	56	
Processed By:		
Contested before a Judge	0	
Uncontested	46	88.5%
Other	6	11.5%
Cases Processed	52	100.0%
Cases Pending 12/31/2011	4	

Relinquishments/Terminations New Cases Filed, 2002-2011



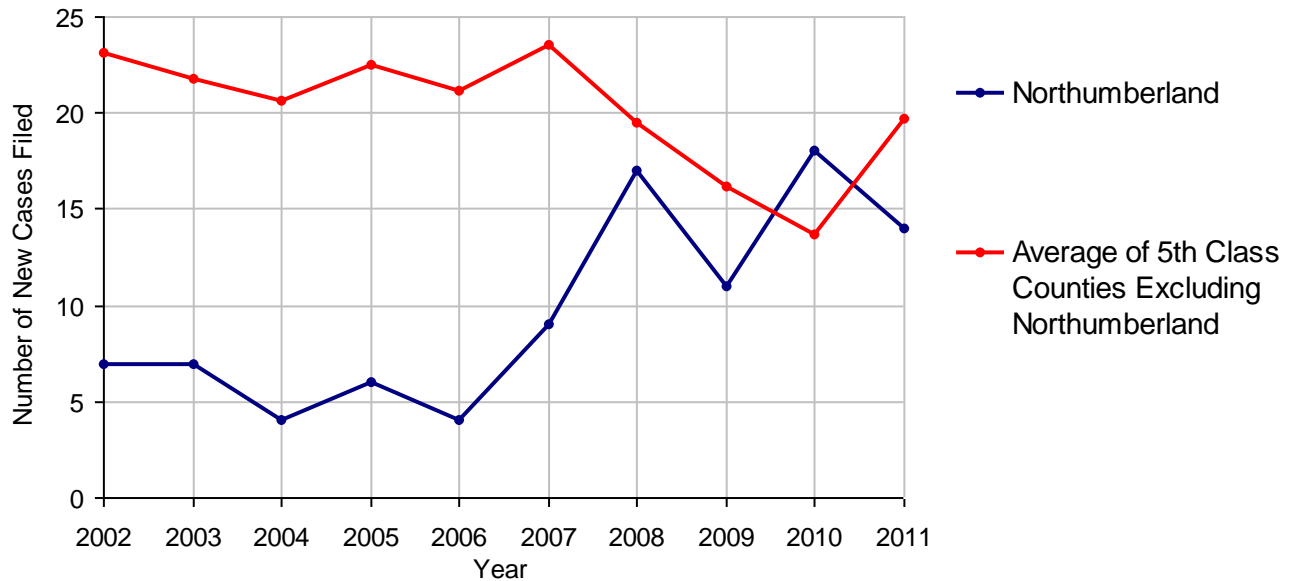
Northumberland County

2011 Population Estimate: 94,558
 Class of County: 5th
 No. of Common Pleas Court Judgeships: 3



2011 Appointment of Guardians		No. of Cases
Cases Pending 1/1/2011		6
New Cases Filed in 2011		14
Cases Available for Processing		20
Processed By:		
Contested before a Judge		0
Uncontested	12	85.7%
Other	2	14.3%
Cases Processed	14	100.0%
Cases Pending 12/31/2011		6

Appointment of Guardians New Cases Filed, 2002-2011

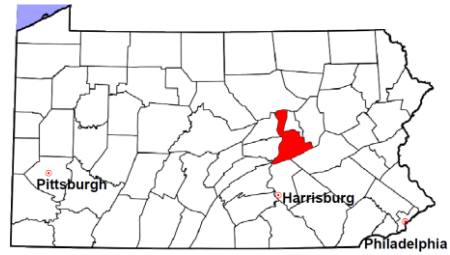


Northumberland County

2011 Population Estimate: 94,558

Class of County: 5th

No. of Common Pleas Court Judgeships: 3



2011 Jury Activity & Performance Measures

A. Juror Days	1,153
B. Number Sent to Voir Dire	1,148
Voir Dire Attendance Rate (B/A * 100)	99.6%
C. Number of Jurors Selected	306
Juror Selection Rate (C/B * 100)	26.7%

Note: In mid-2011, AOPC began utilizing the National Center for State Courts' Jury Managers' Toolbox for collecting jury data. This has resulted in limited jury performance measures being reported for 2011. Additional data will be available in 2012.