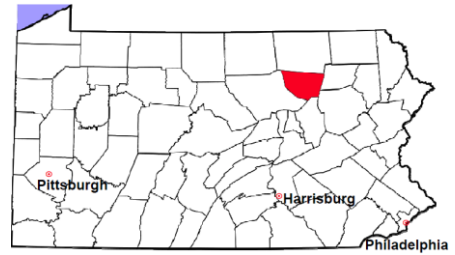


Sullivan County

2011 Population Estimate: 6,479
 Class of County: 8th
 No. of Common Pleas Court Judgeships: 1
 (Sullivan and Wyoming combined)



2011 Criminal No. of Cases

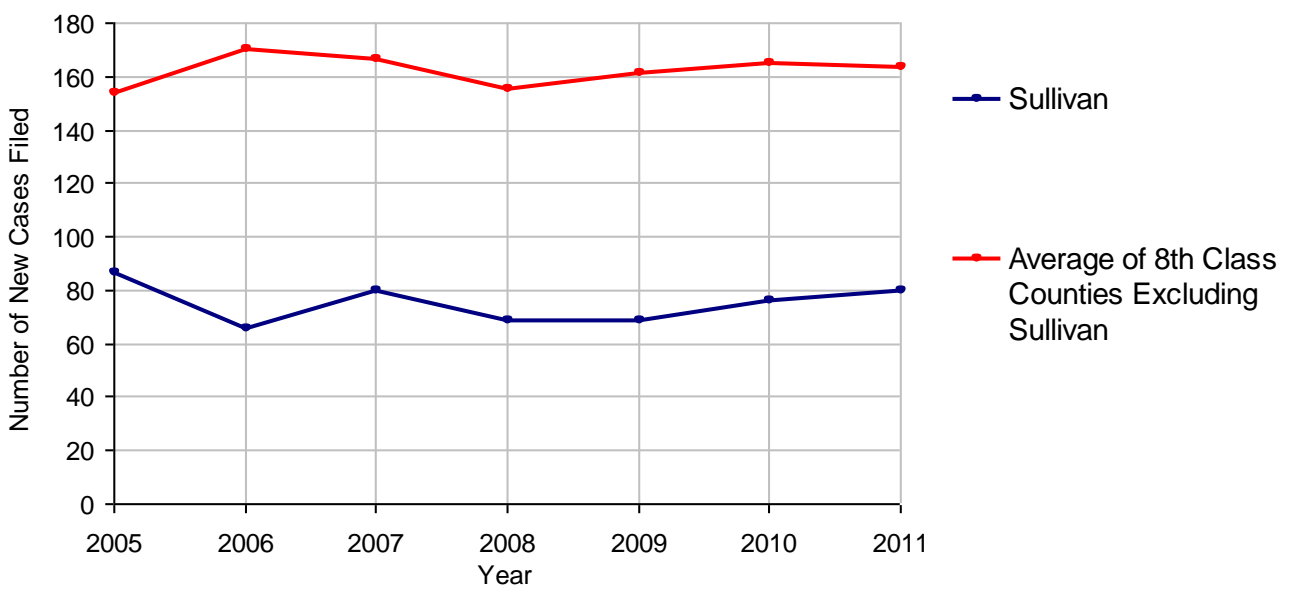
Cases Pending 1/1/2011	38
New Cases Filed in 2011	80
Reopened Cases	0
Cases Available for Disposition	118
Disposed by:	
Withdrawn/Dismissed	1 1.5%
ARD	11 16.9%
Guilty Plea	38 58.5%
Non-Jury Trial	0
Jury Trial	0
Inactive	3 4.6%
Other	12 18.5%
Total Cases Disposed	65 100.0%
Cases Pending 12/31/2011	53
Cases Awaiting Sentencing	8



Age of Pending Cases as of 12/31/2011		
0-60 Days	19	35.8%
61-120 Days	10	18.9%
121-180 Days	6	11.3%
181-240 Days	1	1.9%
241-300 Days	0	
301-360 Days	3	5.7%
Over 360 Days	14	26.4%
Total	53	100.0%

Data provided by CPCMS

Criminal New Cases Filed, 2005-2011

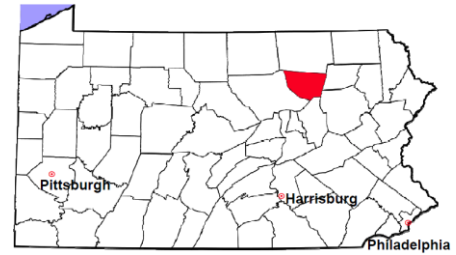


Sullivan County

2011 Population Estimate: 6,479

Class of County: 8th

No. of Common Pleas Court Judgeships: 1
(Sullivan and Wyoming combined)



2011 Criminal - New Cases by Case Type



Case Type	Felony	Misdemeanor	Summary /Ungraded	Total
Person	4	7	0	11
Property	21	6	0	27
Drug	0	5	0	5
Weapon	1	0	0	1
Public Order	2	3	0	5
Motor Vehicle - DWI/DUI	0	30	0	30
Motor Vehicle - Other	0	1	0	1
Other	0	0	0	0
Total	28	52	0	80
	35.0%	65.0%		100.0%

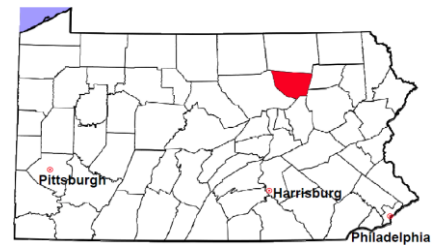
Data provided by CPCMS

Sullivan County

2011 Population Estimate: 6,479

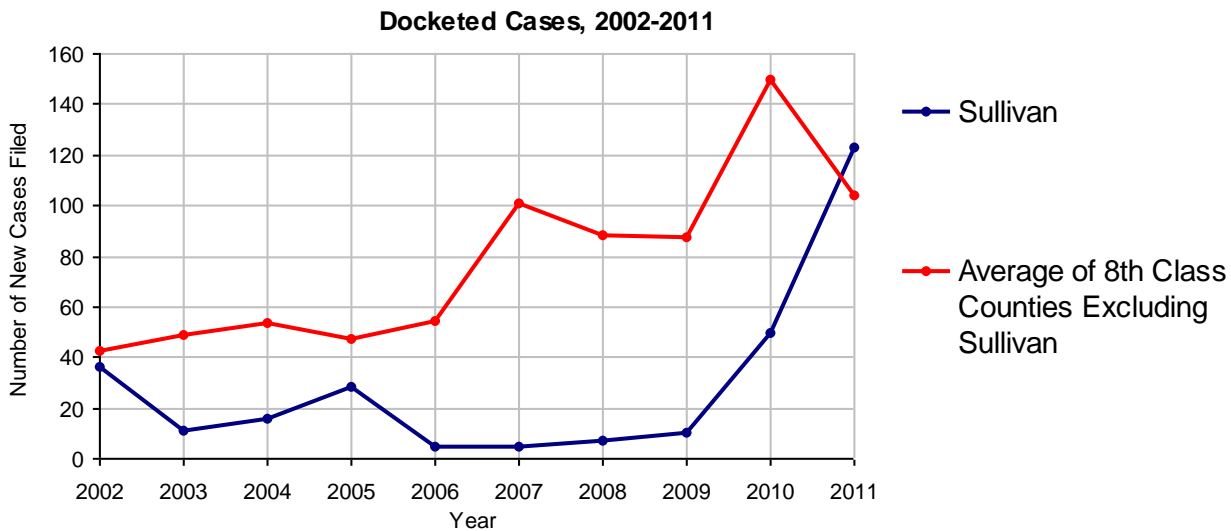
Class of County: 8th

No. of Common Pleas Court Judgeships: 1
(Sullivan and Wyoming combined)



2011 Civil	Civil Action	Other	Total
Cases Pending 1/1/2011	26	20	46
Docketed Cases	34	89	123
Arbitration Appeals	0	0	0
Transferred In	0	0	0
Returned to Active	0	0	0
Cases Available for Processing	60	109	169
Disposed By:			
Default Judgments	0	4	4
Cases Decided by Arbitration Board	0	0	0
Dispositive Motions	10	18	28
Settlements	5	4	9
Moved to Inactive Status	0	0	0
Transferred/Withdrawn	0	0	0
Pa.R.J.A. 1901 Administrative Purge	0	0	0
Other	0	0	0
Jury Trial	0	0	0
Non-Jury Trial	0	0	0
Total Cases Disposed	15	26	41
Cases Pending 12/31/2011	45	83	128

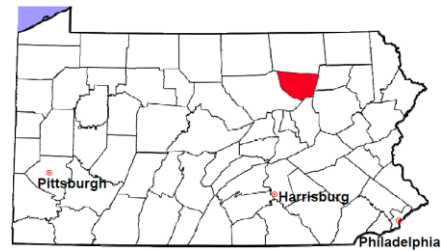
Age of Pending Cases as of 12/31/2011 (Civil Action Only)		
0-6 months	15	33.3%
7-12 months	14	31.1%
13-18 months	13	28.9%
19-24 months	2	4.4%
25-30 months	1	2.2%
31-36 months	0	
37-42 months	0	
43-48 months	0	
49-54 months	0	
55-60 months	0	
61-66 months	0	
67-72 months	0	
Over 72 months	0	
Total	45	100.0%



Note: Prior to June 2010, docketed cases under the "Other" category were not reported. The reporting of these cases starting from June 2010 may contribute to an increase in docketed cases from 2009 to 2010.

Sullivan County

2011 Population Estimate: 6,479
 Class of County: 8th
 No. of Common Pleas Court Judgeships: 1
 (Sullivan and Wyoming combined)



2011 Civil - Docketed Cases Listed by Case Type

TORT (does not include mass tort)

Intentional	1
Malicious Prosecution	0
Motor Vehicle	5
Nuisance	0
Premise Liability	2
Product Liability	1
Slander/Libel/Defamation	0
Other	0

MASS TORT

Asbestos	0
Tobacco	0
Toxic Tort - DES	0
Toxic Tort - Implant	0
Toxic Waste	0
Other	0

PROFESSIONAL LIABILITY

Dental	0
Legal	0
Medical Malpractice	0
Other	0

CONTRACT

(does not include judgments)

Buyer Plaintiff	1
Debt Collection:	
Credit Card	20
Debt Collection: Other	0
Employment Dispute:	
Discrimination	0
Employment Dispute: Other	0
Other	3

REAL PROPERTY

Ejectment*	3
Eminent Domain/ Condemnation*	50
Ground Rent	0
Landlord/Tenant Dispute	1
Mortgage Forclosures:	
Residential*	17
Commercial*	0
Partition of Real Property*	1
Quiet Title*	14
Other*	1

CIVIL APPEALS

Administrative Agencies

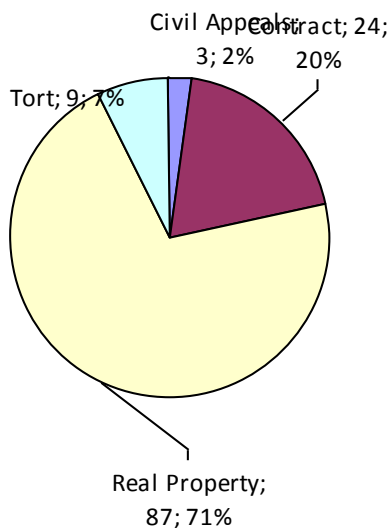
Board of Assessment*	1
Board of Elections*	0
Dept. of Transportation*	2
Zoning Board*	0
Statutory Appeal - Other*	0
Other*	0

MISCELLANEOUS

Common Law/ Statutory Arbitration*	0
Declaratory Judgment*	0
Mandamus*	0
Non-Domestic Relations Restraining Order*	0
Quo Warranto*	0
Replevin*	0
Other*	0

TOTAL DOCKETED CASES: 123

* Civil Other



Of the Docketed Cases:

Pro Se Filings:	0
Class Action Suits:	0
MDJ Appeals:	0

Sullivan County



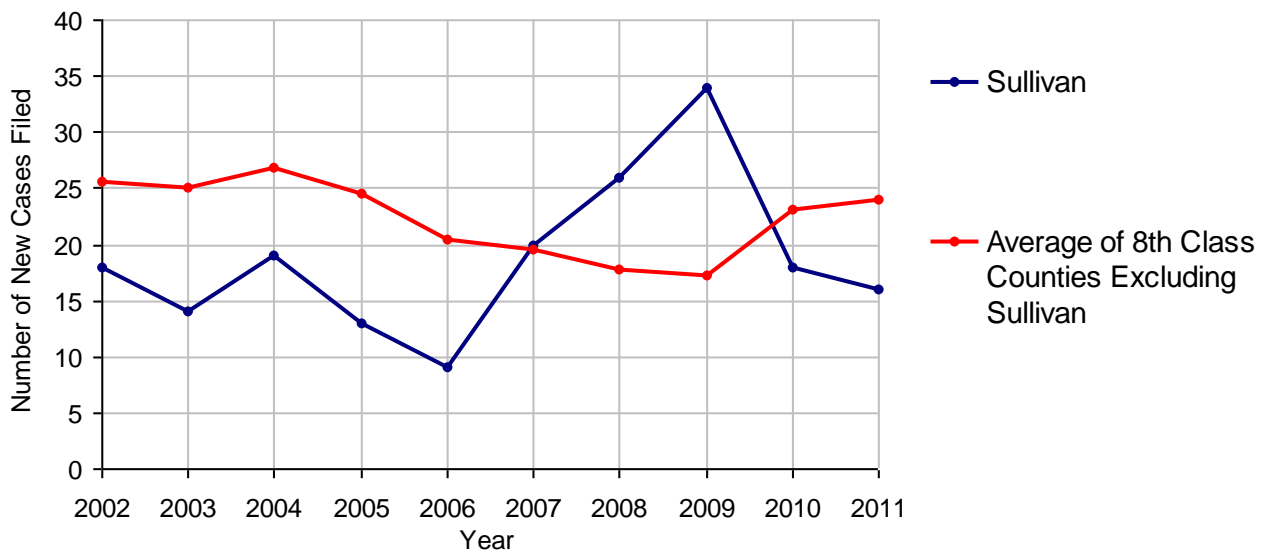
2011 Population Estimate: 6,479
 Class of County: 8th
 No. of Common Pleas Court Judgeships: 1
 (Sullivan and Wyoming combined)

2011 Protection From Abuse

**No. of
Petitions**

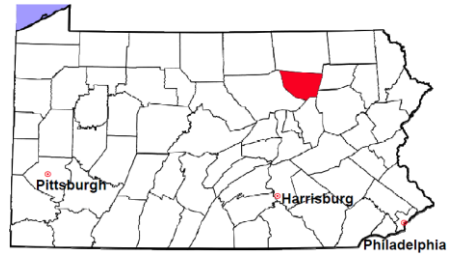
Cases Pending 1/1/2011	2
New Cases Filed in 2011	16
<i>Of these, Petitions Requesting Temporary Orders: 16 (100.0%)</i>	
<i>Temporary Orders DENIED: 0 (0.0%), Temporary Orders GRANTED: 16 (100.0%)</i>	
Cases Available for Processing	18
Processed By:	
Temporary Order DENIED After Ex Parte Hearing and No Evidentiary Hearing Scheduled	3 17.6%
Temporary Order DISMISSED After Evidentiary Hearing and No Final Order Entered	0
Final Order DENIED After Evidentiary Hearing Before a Judge	0
Final Order GRANTED After Evidentiary Hearing Before a Judge	0
Plaintiff Did Not Appear For Evidentiary Hearing	1 5.9%
Final Order by STIPULATION OR AGREEMENT Between the Parties	8 47.1%
Petition WITHDRAWN by Plaintiff	5 29.4%
TRANSFERRED to Another Jurisdiction	0
DECEASED Party	0
Other	0
Cases Processed	17 100.0%
Cases Pending 12/31/2011	1

PFA New Cases Filed, 2002-2011

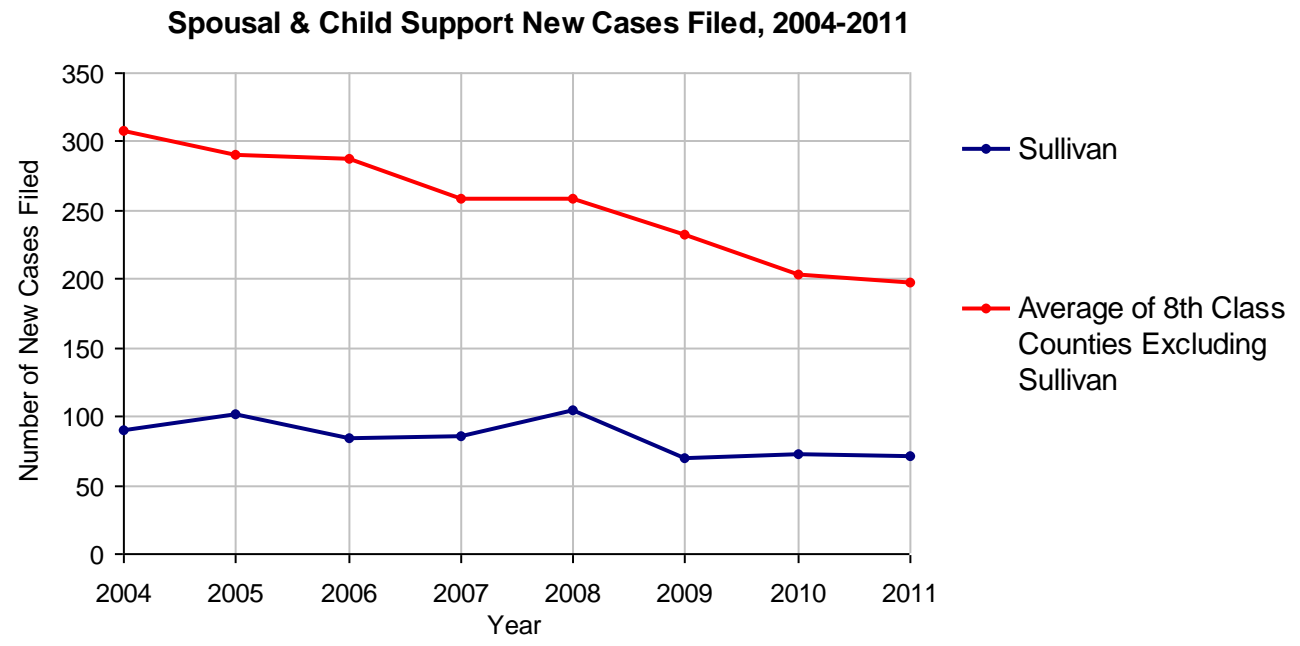


Sullivan County

2011 Population Estimate: 6,479
 Class of County: 8th
 No. of Common Pleas Court Judgeships: 1
 (Sullivan and Wyoming combined)

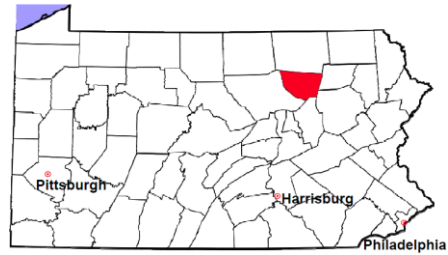


2011 Spousal & Child Support	No. of Petitions	
Cases Pending 1/1/2011	12	
New Cases Filed in 2011	71	
Dockets Transferred In (+)	7	
Dockets Transferred Out (-)	7	
Cases Available for Processing	83	
Processed By:		
Judge	3	4.3%
Intake Officer	67	95.7%
Hearing Officer	0	
Other	0	
Cases Processed	70	100.0%
Cases Pending 12/31/2011	13	



Sullivan County

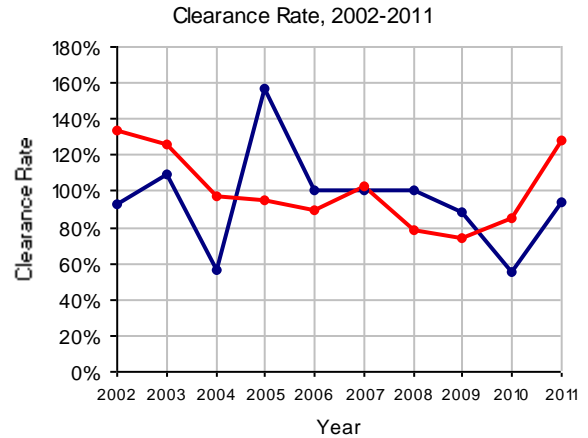
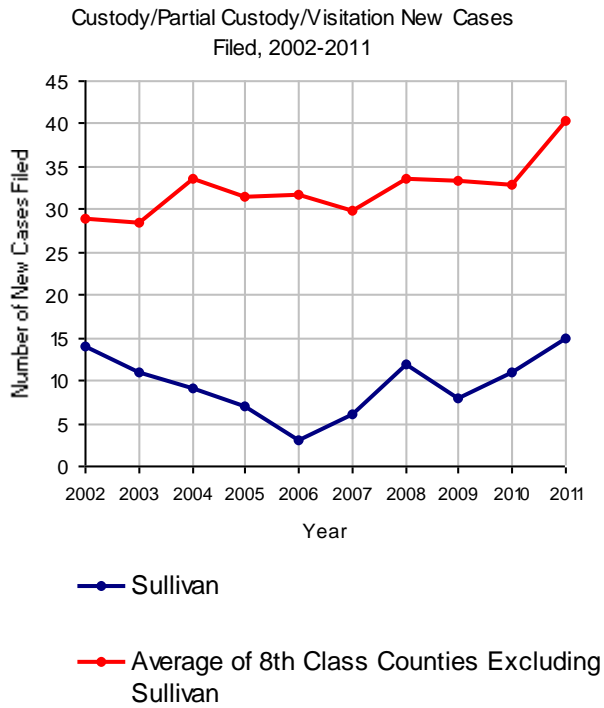
2011 Population Estimate: 6,479
 Class of County: 8th
 No. of Common Pleas Court Judgeships: 1
 (Sullivan and Wyoming combined)



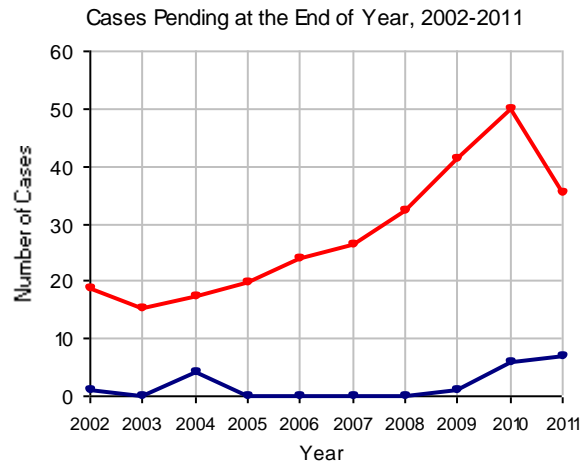
2011 Custody/Partial Custody/Visitation

No. of Petitions

Cases Pending 1/1/2011	6
New Cases Filed in 2011	15
Cases Available for Processing	21
Processed By:	
Judge	14 100.0%
Non-Judicial Officer	0
Other	0
Cases Processed	14 100.0%
Cases Pending 12/31/2011	7

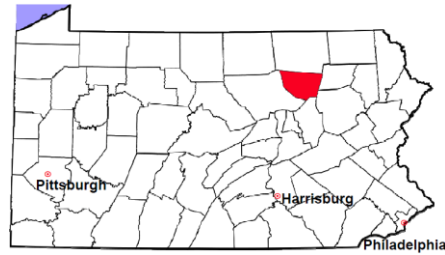


Note: Clearance Rate = Cases Processed / New Cases Filed



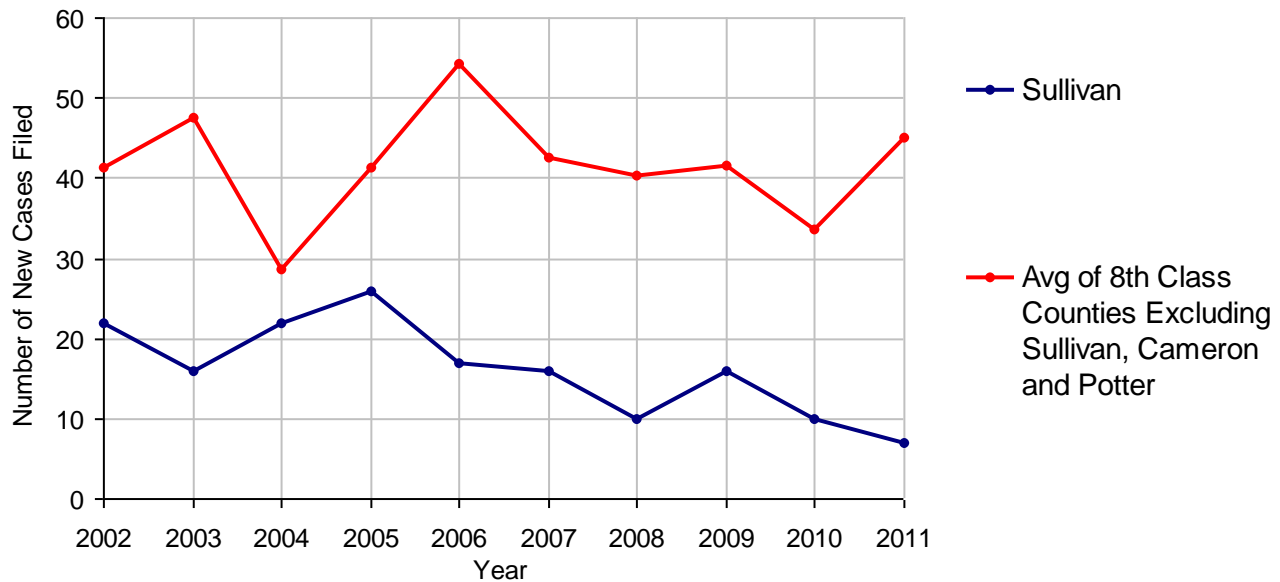
Sullivan County

2011 Population Estimate: 6,479
 Class of County: 8th
 No. of Common Pleas Court Judgeships: 1
 (Sullivan and Wyoming combined)



2011 Divorce	No. of Petitions	
Cases Pending 1/1/2011	40	
New Cases Filed in 2011	7	
Cases Available for Processing	47	
Processed By:		
Contested Before a Judge	0	
Contested Before a Master	3	21.4%
Uncontested	11	78.6%
Other	0	
Cases Processed	14	100.0%
Cases Pending 12/31/2011	33	

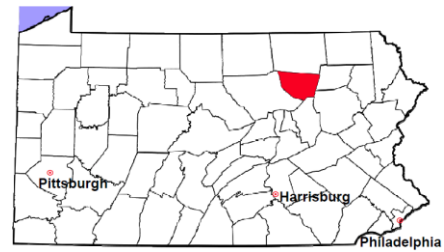
Divorce New Cases Filed, 2002-2011



Note. Due to a high number of out-of-district petitions, Cameron and Potter Counties have a larger inventories than other 8th class counties. Therefore, it is not meaningful to compare Cameron and Potter Counties with other 8th class counties.

Sullivan County

2011 Population Estimate: 6,479
 Class of County: 8th
 No. of Common Pleas Court Judgeships: 1
 (Sullivan and Wyoming combined)



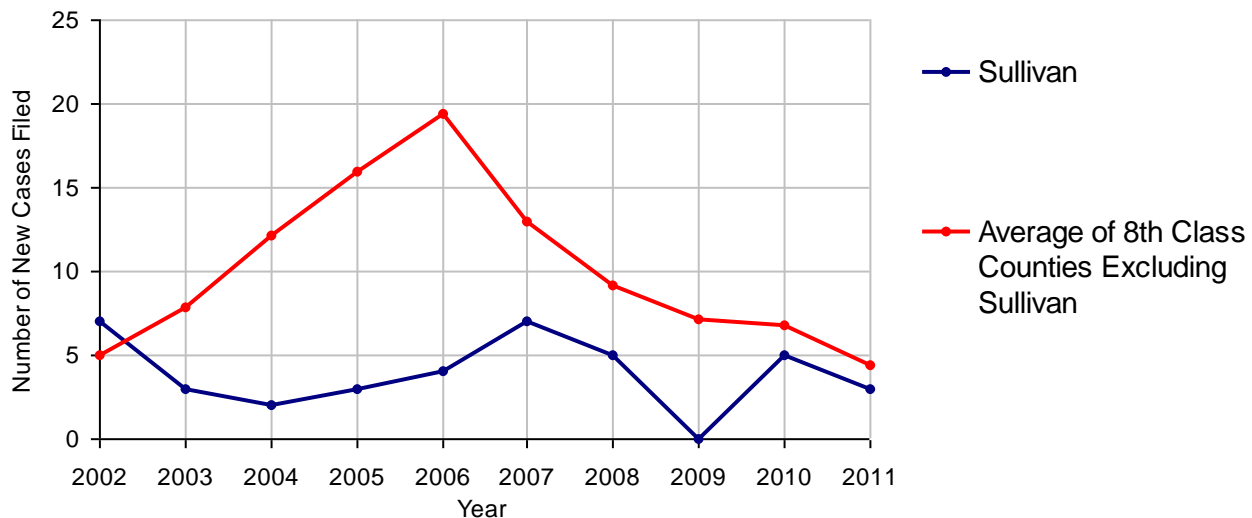
2011 Juvenile Dependency - Active Dependent Inventory



	Abuse/ Neglect	Status Offenses	Total
Cases Pending 1/1/2011	3	0	3
New Petitions Filed in 2011	3	0	3
Other	0	0	0
Total Petitions Available for Processing	6	0	6
Processed by:			
Adjudicated Dependent			
Judge	2	0	2
Master	0	0	0
Adjudicated NOT Dependent			
Judge	0	0	0
Master	0	0	0
Withdrawn/Dismissed/Inactive	0	0	0
Other	3	0	3
Total Petitions Processed	5	0	5
Cases Pending 12/31/2011	1	0	1

Data provided by CPCMS

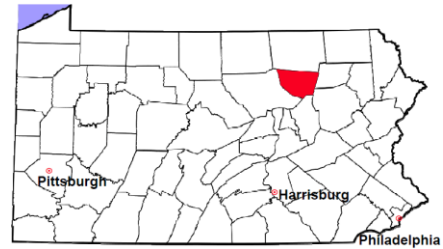
Abuse/Neglect and Status Offenses New Cases Filed, 2002-2011



Note: Dependency data for 2002-2010 were collected manually. Dependency data for 2011 were provided by CPCMS.

Sullivan County

2011 Population Estimate: 6,479
 Class of County: 8th
 No. of Common Pleas Court Judgeships: 1
 (Sullivan and Wyoming combined)



2011 Juvenile Dependency - Adjudicated Dependent Inventory

	Abuse/ Neglect	Status Offenses	Total	
Cases Pending 1/1/2011	8	0	8	
New Adjudicated Dependent Cases	2	0	2	
Other	1	0	1	
Total Adjudicated Dependent Cases	11	0	11	
<u>Court Supervision Terminated:</u>				
Family Reunification	0	0	0	
Adoption	0	0	0	
Placement with a Relative/Guardian	0	0	0	
Aged Out	0	0	0	
Other Permanency Outcomes*	0	0	0	
Other**	1	0	1	100.0%
Total Adjudicated Dependent Cases Terminated	1	0	1	100.0%
Cases Pending 12/31/2011	10	0	10	

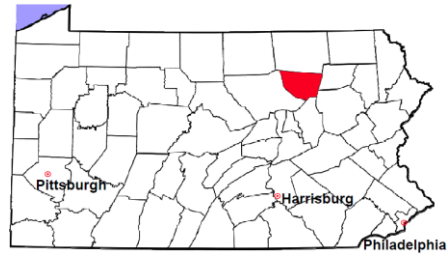
Data provided by CPCMS

* Other Permanency Outcomes include: adjudicated delinquent, death due to natural causes, emancipation, permanent living arrangement, and parent has come forward.

** Other includes cases where Court Supervision is terminated due to transfer out of jurisdiction, withdrawal and administrative closures.

Sullivan County

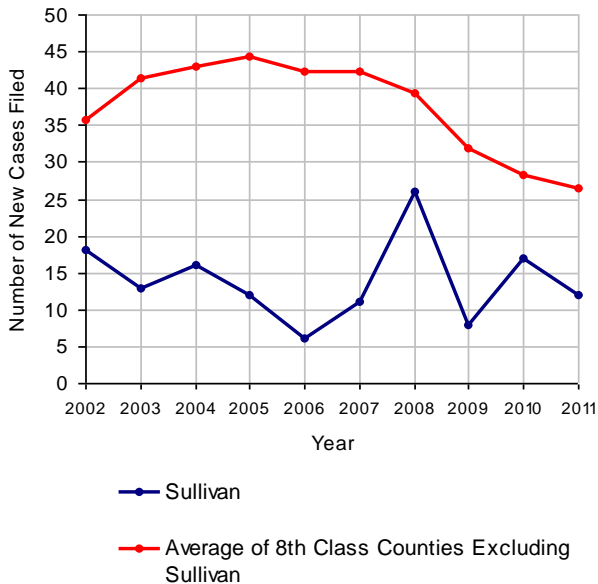
2011 Population Estimate: 6,479
 Class of County: 8th
 No. of Common Pleas Court Judgeships: 1
 (Sullivan and Wyoming combined)



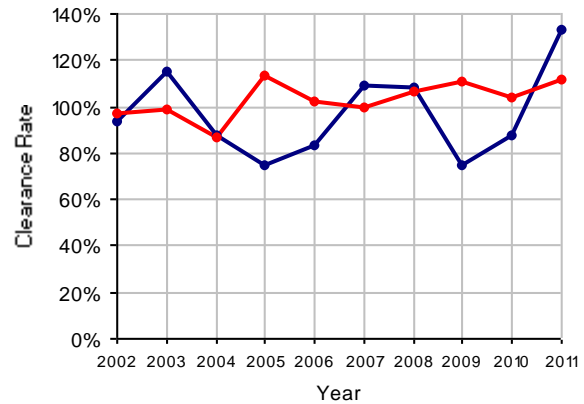
2011 Juvenile Delinquency

	No. of Cases
Cases Pending 1/1/2011	7
New Cases Filed in 2011	12
Cases Available for Processing	19
Processed By:	
Judge	11 68.8%
Non-Judicial Officer	3 18.8%
Other	2 12.5%
Cases Processed	16 100.0%
Cases Pending 12/31/2011	3

Juvenile Delinquency New Cases Filed, 2002-2011

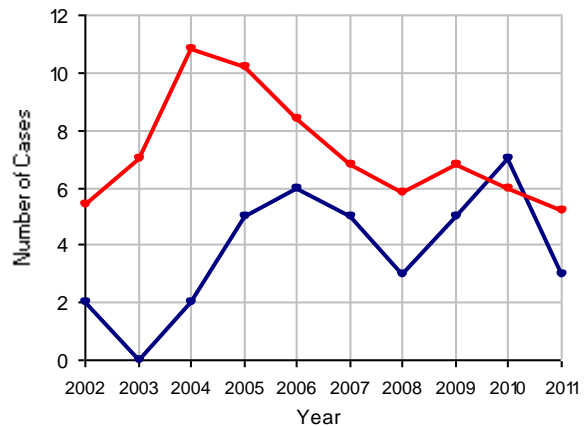


Clearance Rate, 2002-2011



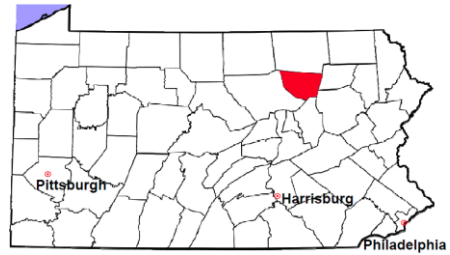
Note: Clearance Rate = Cases Processed / New Cases Filed

Cases Pending at the End of Year, 2002-2011



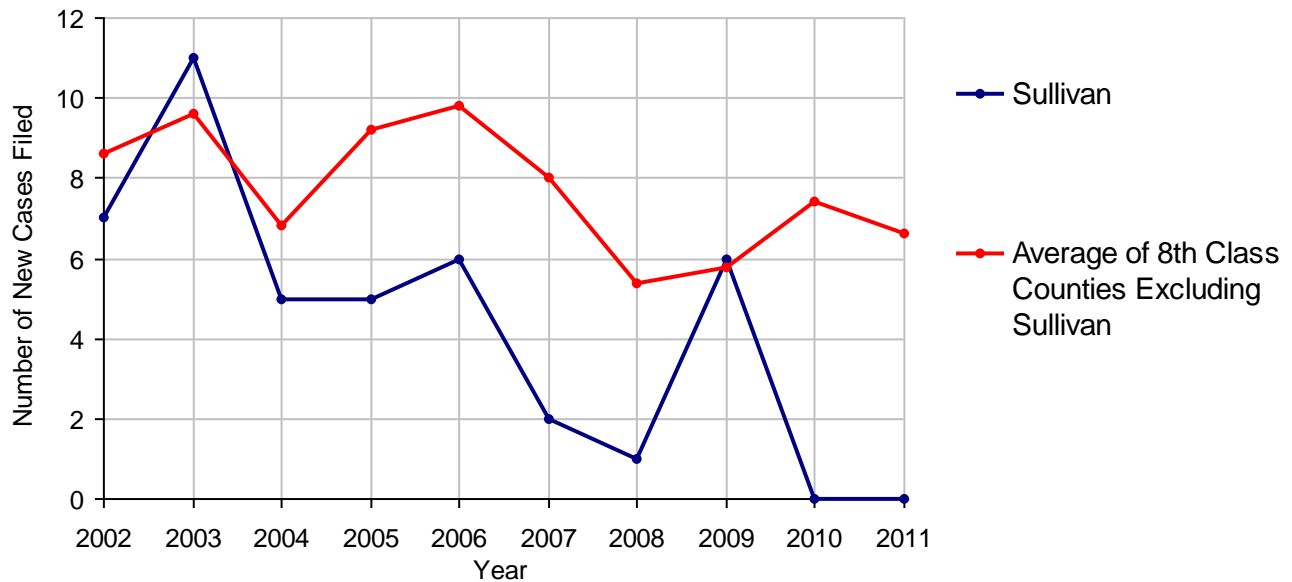
Sullivan County

2011 Population Estimate: 6,479
 Class of County: 8th
 No. of Common Pleas Court Judgeships: 1
 (Sullivan and Wyoming combined)



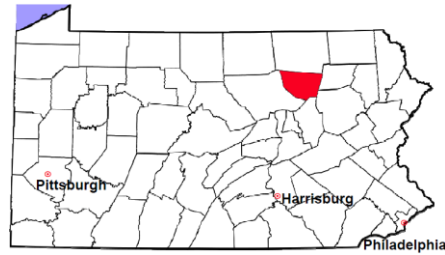
2011 Accounts	No. of Cases
Cases Pending 1/1/2011	0
New Cases Filed in 2011	0
Cases Available for Processing	0
Processed By:	
Contested before a Judge	0
Contested before a Non-judicial Officer	0
Uncontested	0
Other	0
Cases Processed	0
Cases Pending 12/31/2011	0

Accounts New Cases Filed, 2002-2011



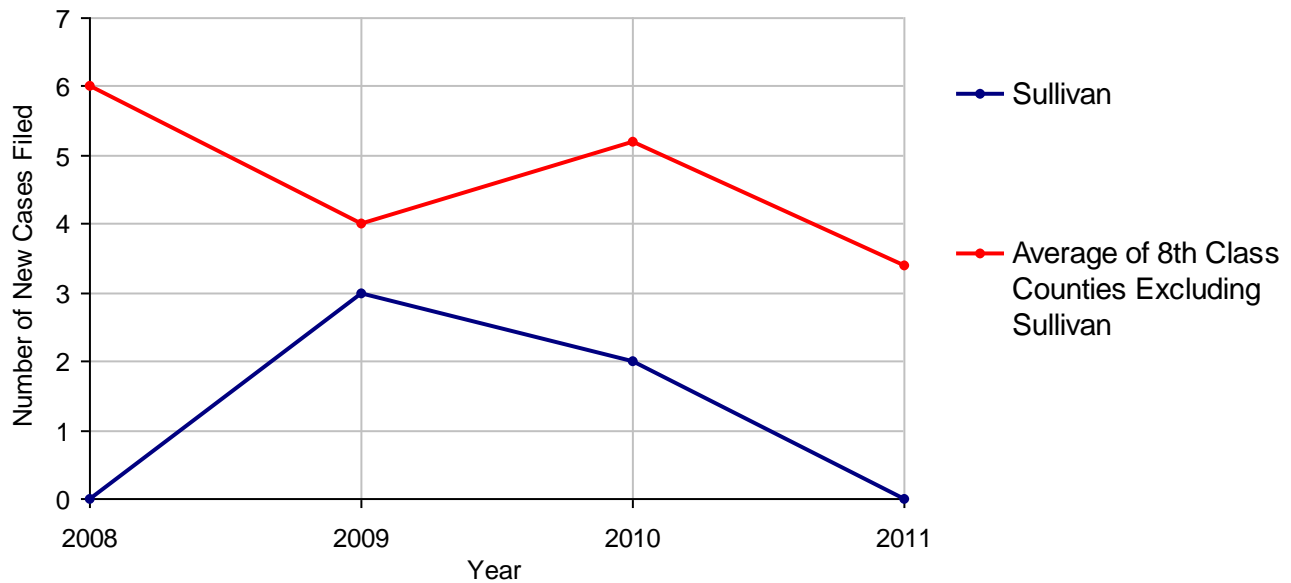
Sullivan County

2011 Population Estimate: 6,479
 Class of County: 8th
 No. of Common Pleas Court Judgeships: 1
 (Sullivan and Wyoming combined)



2011 Adoptions		No. of Cases	
Cases Pending 1/1/2011		1	
New Cases Filed in 2011		0	
Cases Available for Processing		1	
Processed By:			
Contested before a Judge	Granted	0	
	Denied	0	
Uncontested	Granted	1	100.0%
	Denied	0	
Other		0	
Cases Processed		1	100.0%
Cases Pending 12/31/2011		0	

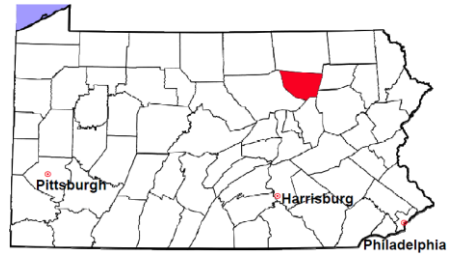
Adoptions New Cases Filed, 2008-2011



Note: Prior to 2008, each petition was counted as one new case, regardless of the number of children listed on the petition. Starting in 2008, each child listed on a petition is counted as a separate case. Therefore, statistics for the years since 2008 should not be compared to those for the years prior to 2008.

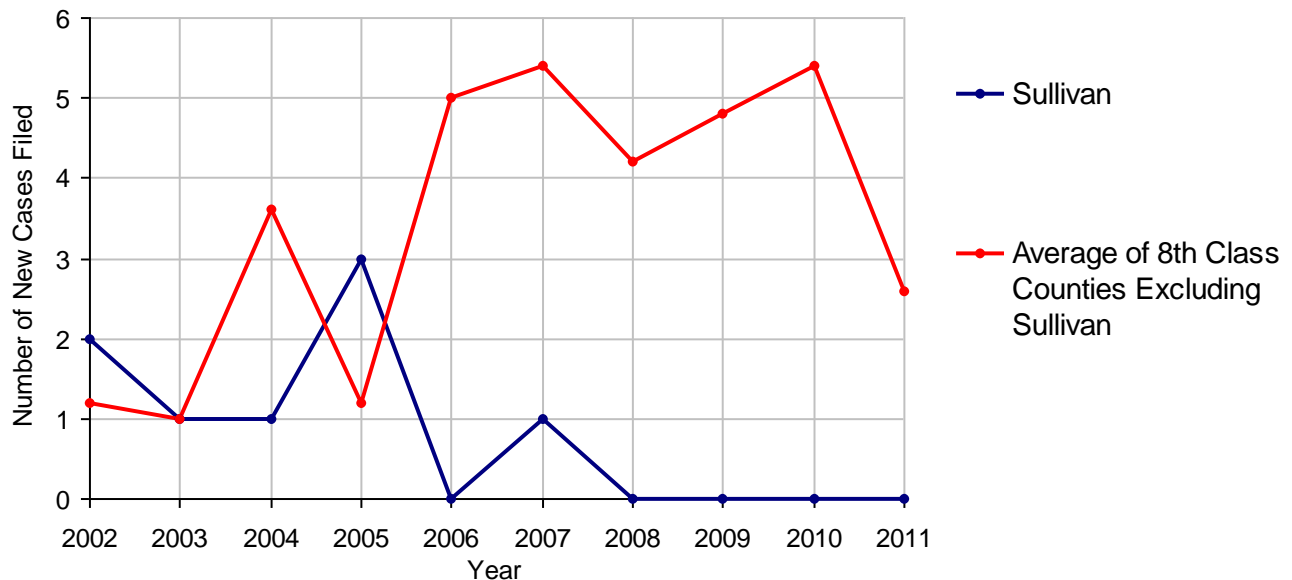
Sullivan County

2011 Population Estimate: 6,479
 Class of County: 8th
 No. of Common Pleas Court Judgeships: 1
 (Sullivan and Wyoming combined)



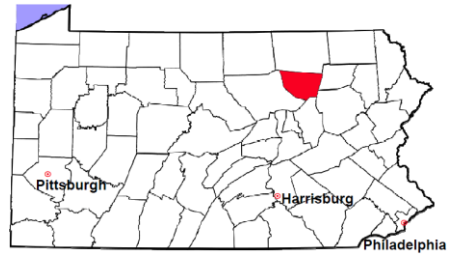
2011 Relinquishments/Terminations	No. of Cases
Cases Pending 1/1/2011	0
New Cases Filed in 2011	0
Cases Available for Processing	0
Processed By:	
Contested before a Judge	0
Uncontested	0
Other	0
Cases Processed	0
Cases Pending 12/31/2011	0

Relinquishments/Terminations New Cases Filed, 2002-2011



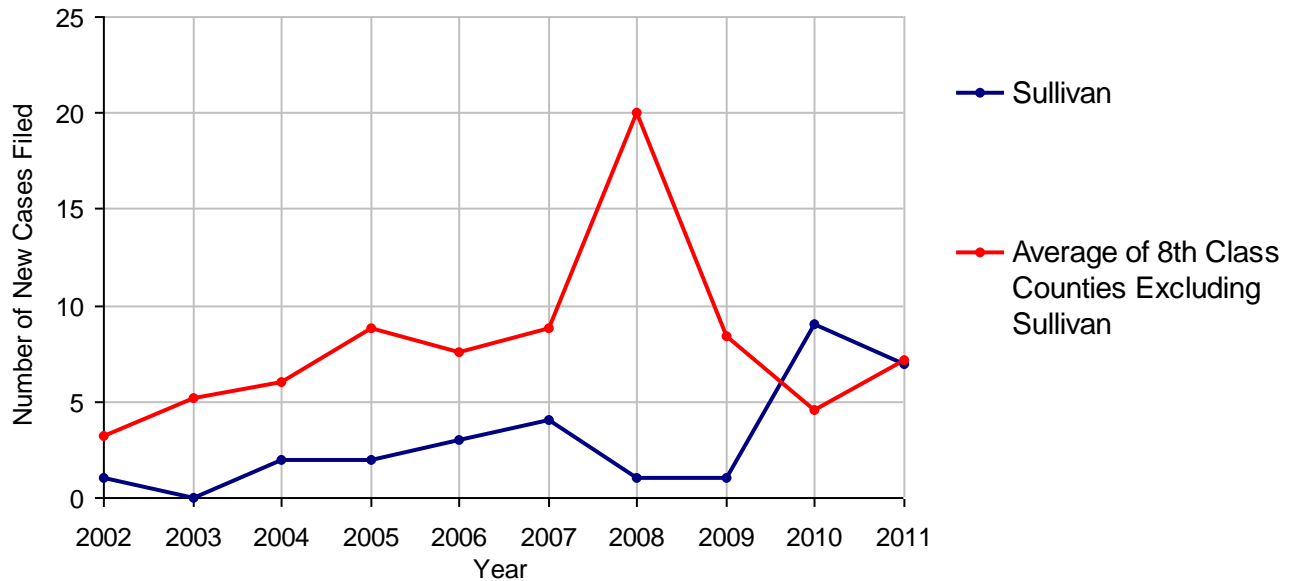
Sullivan County

2011 Population Estimate: 6,479
 Class of County: 8th
 No. of Common Pleas Court Judgeships: 1
 (Sullivan and Wyoming combined)



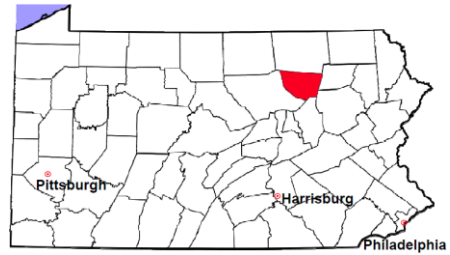
2011 Appointment of Guardians	No. of Cases
Cases Pending 1/1/2011	1
New Cases Filed in 2011	7
Cases Available for Processing	8
Processed By:	
Contested before a Judge	0
Uncontested	4 100.0%
Other	0
Cases Processed	4 100.0%
Cases Pending 12/31/2011	4

Appointment of Guardians New Cases Filed, 2002-2011



Sullivan County

2011 Population Estimate: 6,479
Class of County: 8th
No. of Common Pleas Court Judgeships: 1
(Sullivan and Wyoming combined)



2011 Jury Activity and Performance Measures

A. Juror Days	0
B. Number Sent to Voir Dire	0
Voir Dire Attendance Rate (B/A * 100)	
C. Number of Jurors Selected	0
Juror Selection Rate (C/B * 100)	

Note: In mid-2011, AOPC began utilizing the National Center for State Courts' Jury Managers' Toolbox for collecting jury data. This has resulted in limited jury performance measures being reported for 2011. Additional data will be available in 2012.