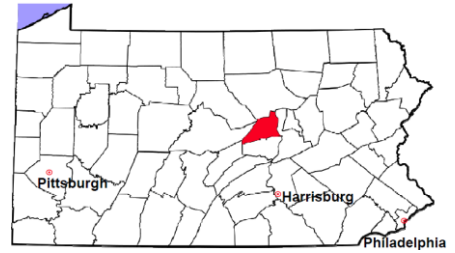


# Union County

2011 Population Estimate: 44,847  
 Class of County: 7th  
 No. of Common Pleas Court Judgeships: 2  
 (Union and Snyder combined)



2011 Criminal	No. of Cases
---------------	--------------

Cases Pending 1/1/2011	141
New Cases Filed in 2011	347
Reopened Cases	27
<b>Cases Available for Disposition</b>	<b>515</b>

**Disposed by:**

Withdrawn/Dismissed	12	3.4%
ARD	88	24.9%
Guilty Plea	221	62.4%
Non-Jury Trial	3	0.8%
Jury Trial	4	1.1%
Inactive	9	2.5%
Other	17	4.8%
<b>Total Cases Disposed</b>	<b>354</b>	<b>100.0%</b>

**Cases Pending 12/31/2011** **161**

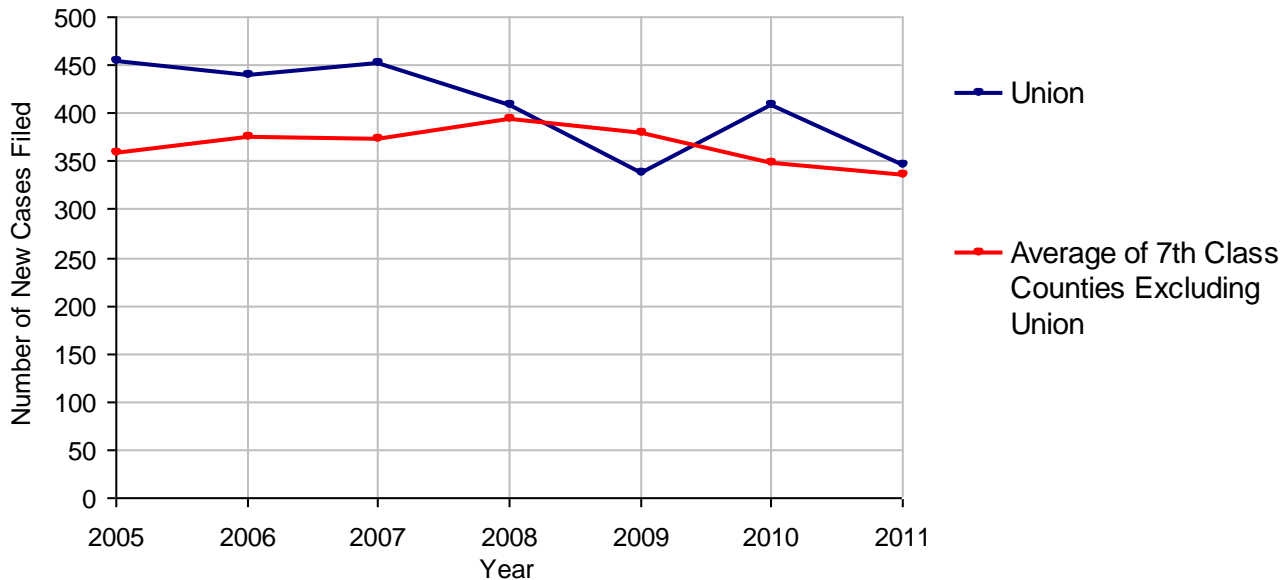
Cases Awaiting Sentencing 17

Data provided by CPCMS

Age of Pending Cases as of 12/31/2011		
---------------------------------------	--	--

0-60 Days	72	44.7%
61-120 Days	35	21.7%
121-180 Days	23	14.3%
181-240 Days	14	8.7%
241-300 Days	11	6.8%
301-360 Days	3	1.9%
Over 360 Days	3	1.9%
<b>Total</b>	<b>161</b>	<b>100.0%</b>

**Criminal New Cases Filed, 2005-2011**

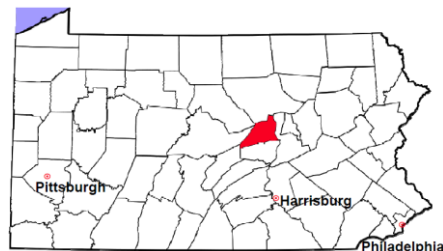


# Union County

2011 Population Estimate: 44,847

Class of County: 7th

No. of Common Pleas Court Judgeships: 2  
(Union and Snyder combined)



## 2011 Criminal - New Cases by Case Type

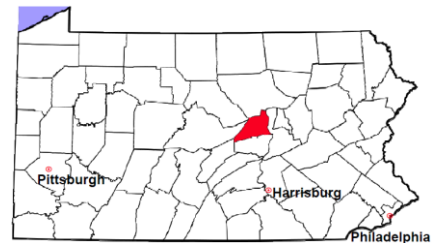


Case Type	Felony	Misdemeanor	Summary /Ungraded	Total
Person	25	34	0	59
Property	55	59	0	114
Drug	4	23	0	27
Weapon	2	0	0	2
Public Order	5	17	0	22
Motor Vehicle - DWI/DUI	0	122	0	122
Motor Vehicle - Other	1	0	0	1
Other	0	0	0	0
<b>Total</b>	<b>92</b>	<b>255</b>	<b>0</b>	<b>347</b>
	<b>26.5%</b>	<b>73.5%</b>		<b>100.0%</b>

Data provided by CPCMS

# Union County

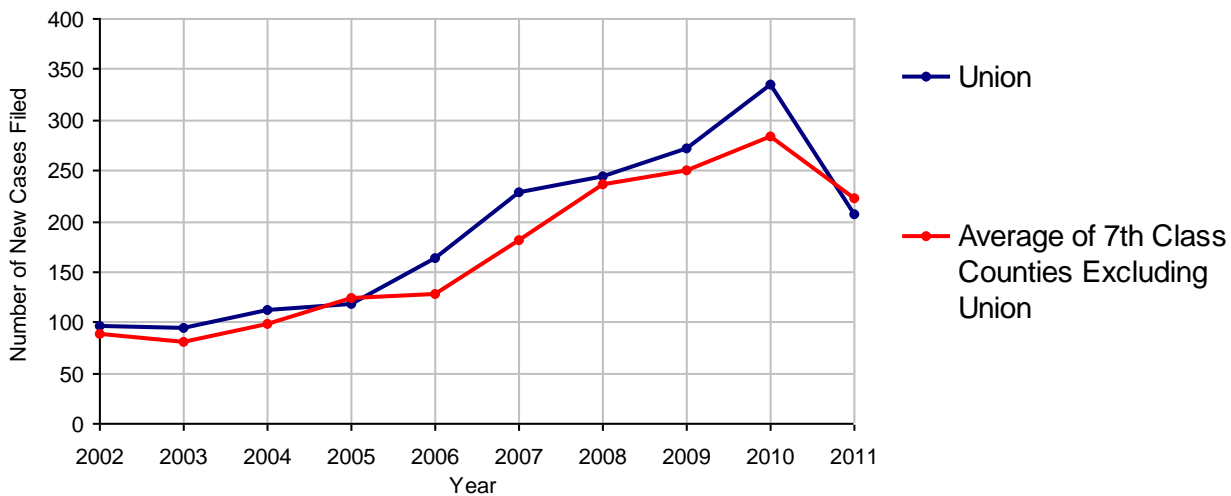
2011 Population Estimate: 44,847  
 Class of County: 7th  
 No. of Common Pleas Court Judgeships: 2  
 (Union and Snyder combined)



2011 Civil	Civil Action	Other	Total
Cases Pending 1/1/2011	38	40	78
Docketed Cases	145	62	207
Arbitration Appeals	0	0	0
Transferred In	0	0	0
Returned to Active	11	0	11
<b>Cases Available for Processing</b>	<b>194</b>	<b>102</b>	<b>296</b>
Disposed By:			
Default Judgments	73	44	117
Cases Decided by Arbitration Board	5	0	5
Dispositive Motions	49	16	65
Settlements	8	4	12
Moved to Inactive Status	4	3	7
Transferred/Withdrawn	0	0	0
Pa.R.J.A. 1901 Administrative Purge	0	0	0
Other	0	0	0
Jury Trial	0	0	0
Non-Jury Trial	0	0	0
<b>Total Cases Disposed</b>	<b>139</b>	<b>67</b>	<b>206</b>
<b>Cases Pending 12/31/2011</b>	<b>55</b>	<b>35</b>	<b>90</b>

Age of Pending Cases as of 12/31/2011 (Civil Action Only)		
0-6 months	41	74.5%
7-12 months	9	16.4%
13-18 months	4	7.3%
19-24 months	0	
25-30 months	0	
31-36 months	0	
37-42 months	1	1.8%
43-48 months	0	
49-54 months	0	
55-60 months	0	
61-66 months	0	
67-72 months	0	
Over 72 months	0	
<b>Total</b>	<b>55</b>	<b>100.0%</b>

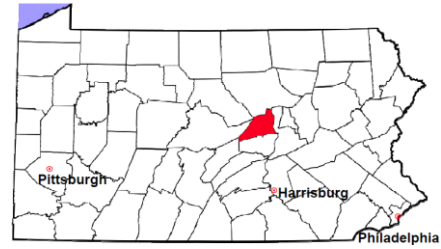
Docketed Cases, 2002-2011



Note: Prior to June 2010, docketed cases under the "Other" category were not reported. The reporting of these cases starting from June 2010 may contribute to an increase in docketed cases from 2009 to 2010.

# Union County

2011 Population Estimate: 44,847  
 Class of County: 7th  
 No. of Common Pleas Court Judgeships: 2  
 (Union and Snyder combined)



## 2011 Civil - Docketed Cases Listed by Case Type

### TORT (does not include mass tort)

Intentional	1
Malicious Prosecution	0
Motor Vehicle	5
Nuisance	1
Premise Liability	1
Product Liability	1
Slander/Libel/Defamation	0
Other	1

### MASS TORT

Asbestos	0
Tobacco	0
Toxic Tort - DES	0
Toxic Tort - Implant	0
Toxic Waste	0
Other	0

### PROFESSIONAL LIABILITY

Dental	0
Legal	0
Medical Malpractice	1
Other	0

### CONTRACT

(does not include judgments)

Buyer Plaintiff	1
Debt Collection:	
Credit Card	90
Other	35
Employment Dispute:	
Discrimination	0
Other	8

### REAL PROPERTY

Ejectment*	3
Eminent Domain/ Condemnation*	0
Ground Rent	0
Landlord/Tenant Dispute	0
Mortgage Forclosures:	
Residential*	44
Commercial*	3
Partition of Real Property*	0
Quiet Title*	2
Other*	0

### CIVIL APPEALS

*Administrative Agencies*

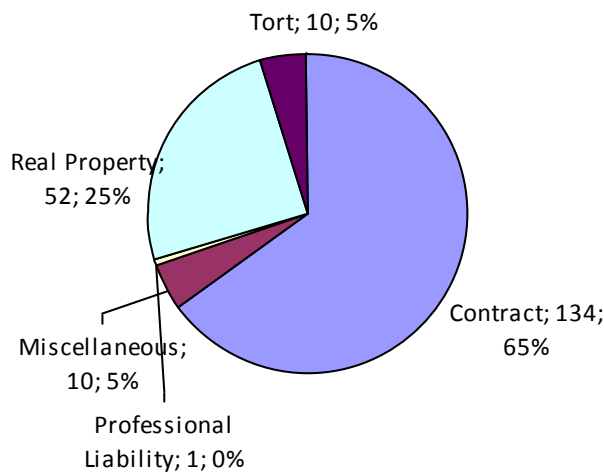
Board of Assessment*	0
Board of Elections*	0
Dept. of Transportation*	0
Zoning Board*	0
Statutory Appeal - Other*	0
Other*	0

### MISCELLANEOUS

Common Law/ Statutory Arbitration*	0
Declaratory Judgment*	2
Mandamus*	0
Non-Domestic Relations Restraining Order*	0
Quo Warranto*	0
Replevin*	2
Other*	6

**TOTAL DOCKETED CASES:** 207

\* Civil Other



### Of the Docketed Cases:

Pro Se Filings:	3	1.4%
Class Action Suits:	1	0.5%
MDJ Appeals:	2	1.0%

# Union County

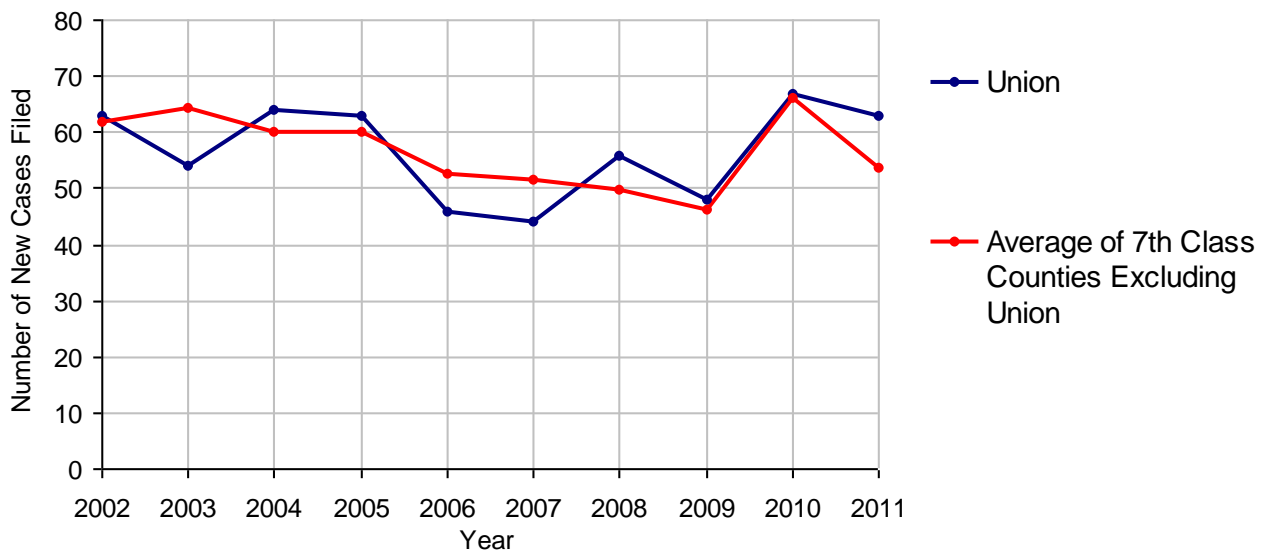
2011 Population Estimate: 44,847  
 Class of County: 7th  
 No. of Common Pleas Court Judgeships: 2  
 (Union and Snyder combined)



## 2011 Protection From Abuse

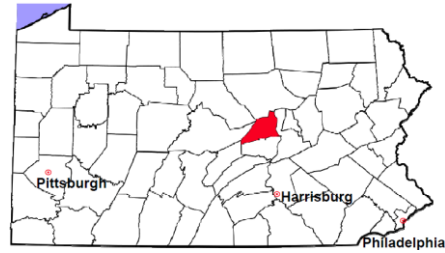
	No. of Petitions
Cases Pending 1/1/2011	8
New Cases Filed in 2011	63
<i>Of these, Petitions Requesting Temporary Orders: 63 (100.0%)</i>	
<i>Temporary Orders DENIED: 13 (20.6%), Temporary Orders GRANTED: 50 (79.4%)</i>	
<b>Cases Available for Processing</b>	<b>71</b>
Processed By:	
Temporary Order DENIED After Ex Parte Hearing and No Evidentiary Hearing Scheduled	0
Temporary Order DISMISSED After Evidentiary Hearing and No Final Order Entered	5 7.7%
Final Order DENIED After Evidentiary Hearing Before a Judge	1 1.5%
Final Order GRANTED After Evidentiary Hearing Before a Judge	31 47.7%
Plaintiff Did Not Appear For Evidentiary Hearing	4 6.2%
Final Order by STIPULATION OR AGREEMENT Between the Parties	9 13.8%
Petition WITHDRAWN by Plaintiff	15 23.1%
TRANSFERRED to Another Jurisdiction	0
DECEASED Party	0
Other	0
<b>Cases Processed</b>	<b>65 100.0%</b>
<b>Cases Pending 12/31/2011</b>	<b>6</b>

**PFA New Cases Filed, 2002-2011**

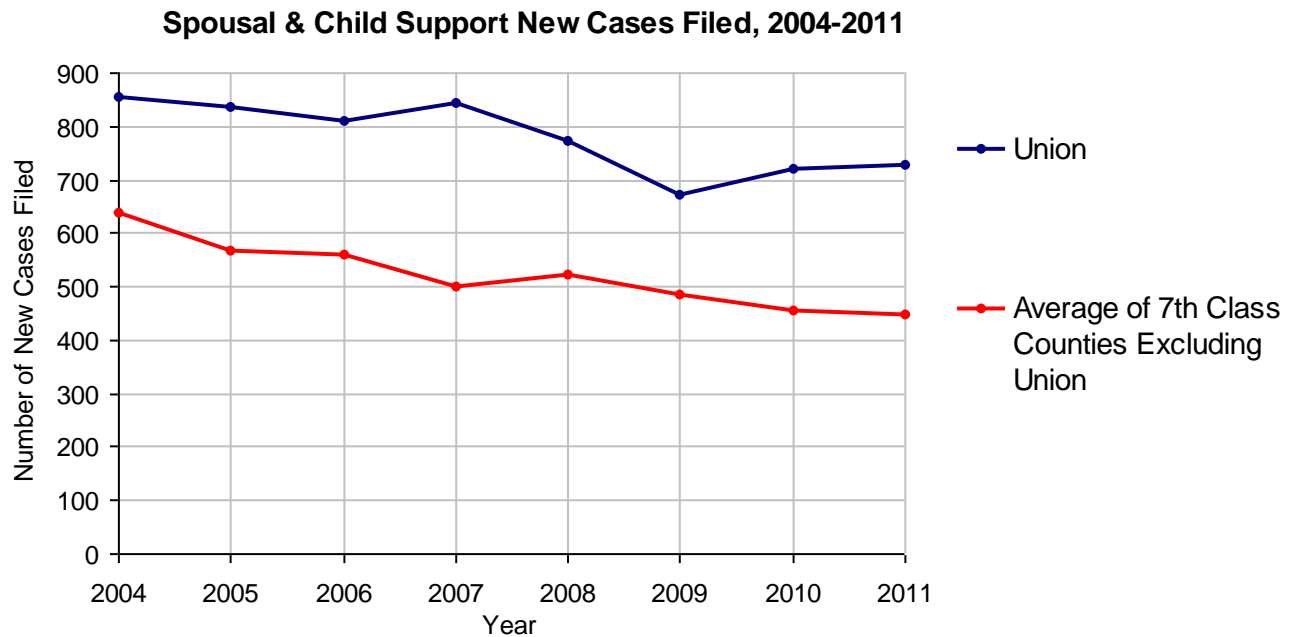


# Union County

2011 Population Estimate: 44,847  
 Class of County: 7th  
 No. of Common Pleas Court Judgeships: 2  
 (Union and Snyder combined)



<b>2011 Spousal &amp; Child Support</b>	<b>No. of Petitions</b>	
Cases Pending 1/1/2011	114	
New Cases Filed in 2011	729	
Dockets Transferred In (+)	10	
Dockets Transferred Out (-)	11	
<b>Cases Available for Processing</b>	<b>842</b>	
Processed By:		
Judge	31	4.3%
Intake Officer	690	95.4%
Hearing Officer	0	
Other	2	0.3%
<b>Cases Processed</b>	<b>723</b>	<b>100.0%</b>
<b>Cases Pending 12/31/2011</b>	<b>119</b>	

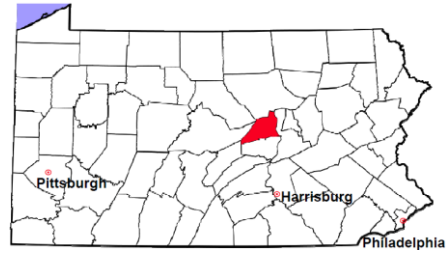


# Union County

2011 Population Estimate: 44,847

Class of County: 7th

No. of Common Pleas Court Judgeships: 2  
(Union and Snyder combined)



## 2011 Custody/Partial Custody/Visitation

No. of  
Petitions

Cases Pending 1/1/2011

116

New Cases Filed in 2011

97

**Cases Available for Processing**

**213**

Processed By:

Judge

100

95.2%

Non-Judicial Officer

0

Other

5

4.8%

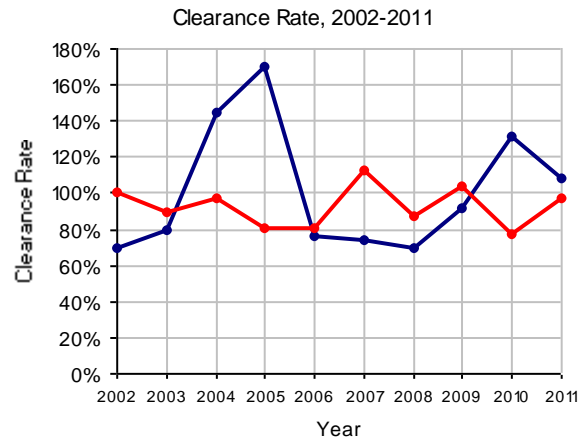
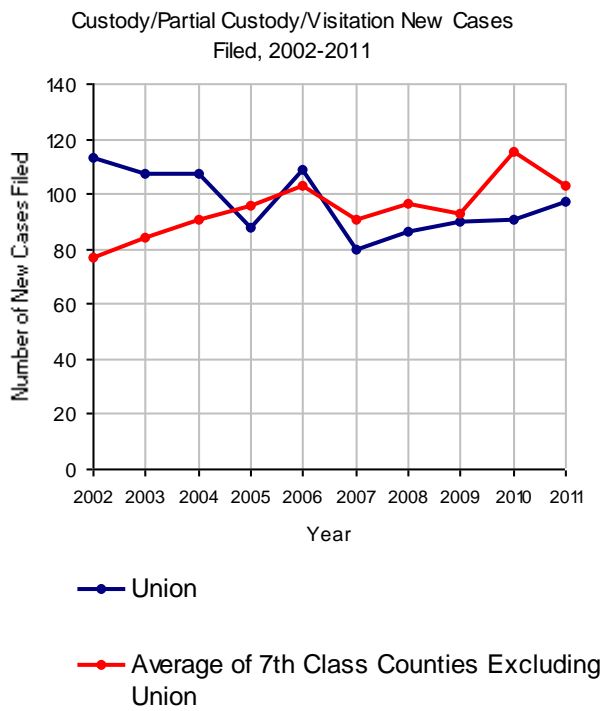
**Cases Processed**

**105**

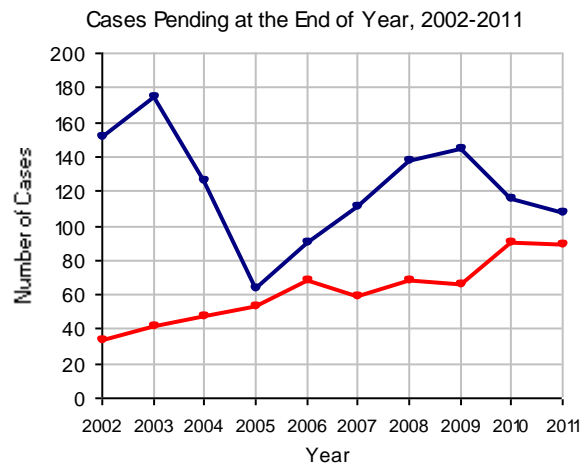
**100.0%**

**Cases Pending 12/31/2011**

**108**

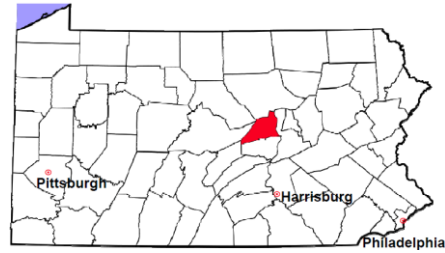


Note: Clearance Rate = Cases Processed / New Cases Filed



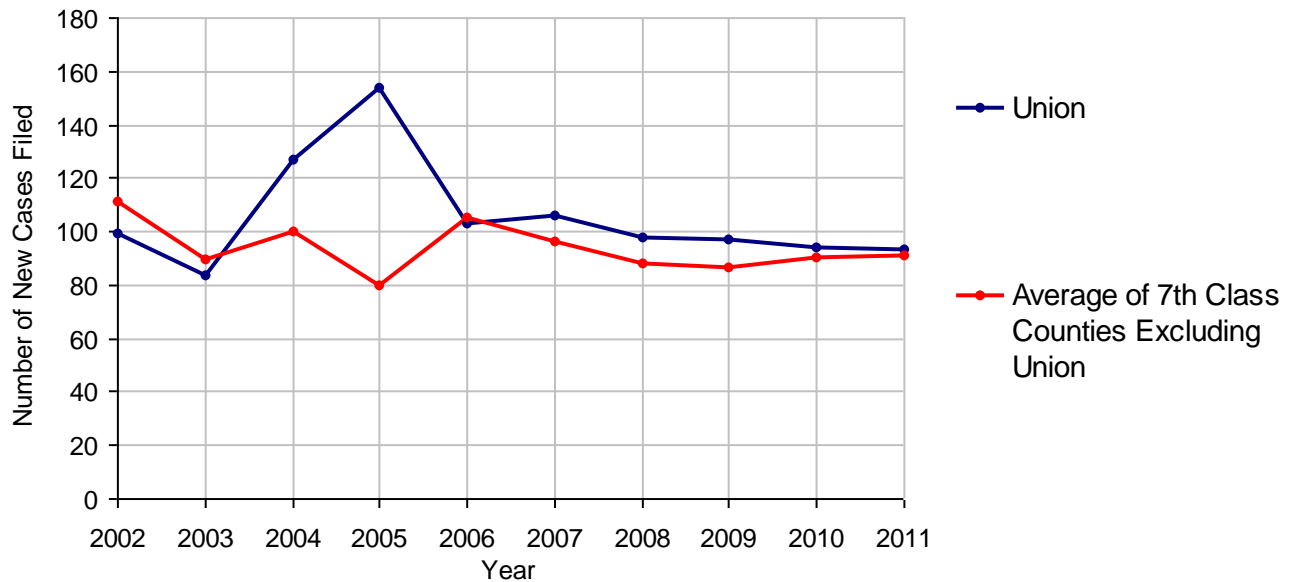
# Union County

2011 Population Estimate: 44,847  
 Class of County: 7th  
 No. of Common Pleas Court Judgeships: 2  
 (Union and Snyder combined)



<b>2011 Divorce</b>	<b>No. of Petitions</b>	
Cases Pending 1/1/2011	127	
New Cases Filed in 2011	93	
<b>Cases Available for Processing</b>	<b>220</b>	
Processed By:		
Contested Before a Judge	0	
Contested Before a Master	0	
Uncontested	90	93.8%
Other	6	6.3%
<b>Cases Processed</b>	<b>96</b>	<b>100.0%</b>
<b>Cases Pending 12/31/2011</b>	<b>124</b>	

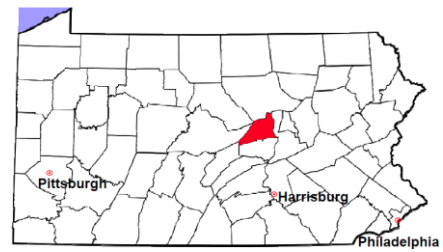
**Divorce New Cases Filed, 2002-2011**





# Union County

2011 Population Estimate: 44,847  
 Class of County: 7th  
 No. of Common Pleas Court Judgeships: 2  
 (Union and Snyder combined)



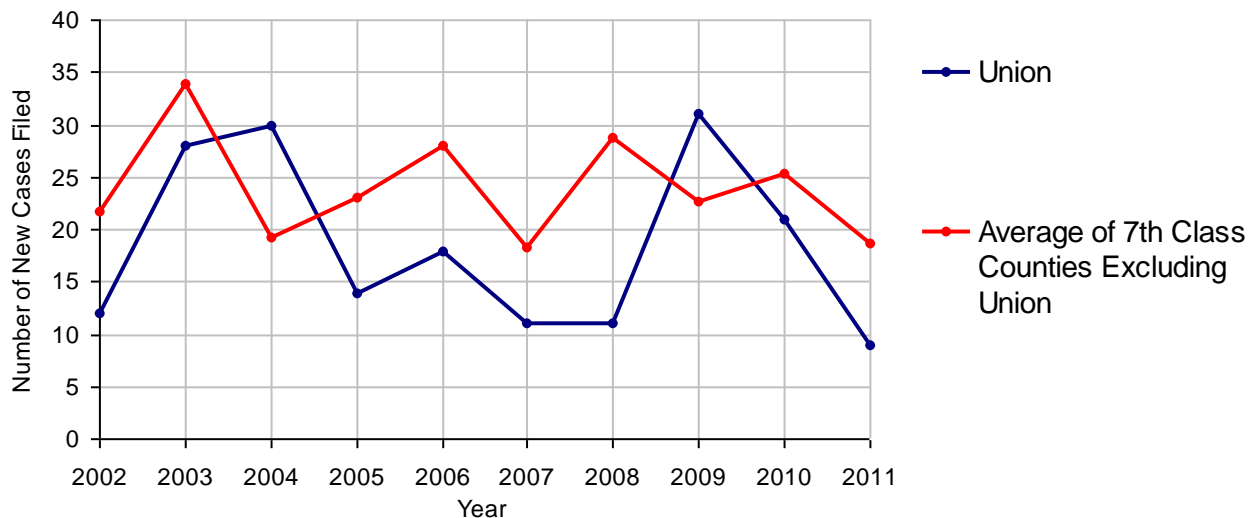
## 2011 Juvenile Dependency - Active Dependent Inventory



	Abuse/ Neglect	Status Offenses	Total
Cases Pending 1/1/2011	4	0	4
New Petitions Filed in 2011	7	2	9
Other	0	0	0
<b>Total Petitions Available for Processing</b>	<b>11</b>	<b>2</b>	<b>13</b>
Processed by:			
Adjudicated Dependent			
Judge	10	2	12
Master	0	0	0
Adjudicated NOT Dependent			
Judge	0	0	0
Master	0	0	0
Withdrawn/Dismissed/Inactive	1	0	1
Other	0	0	0
<b>Total Petitions Processed</b>	<b>11</b>	<b>2</b>	<b>13</b>
<b>Cases Pending 12/31/2011</b>	<b>0</b>	<b>0</b>	<b>0</b>

Data provided by CPCMS

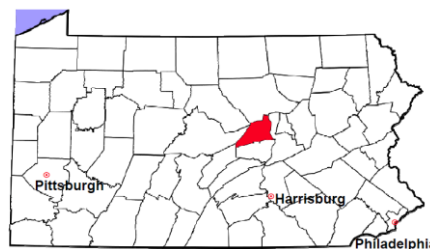
Abuse/Neglect and Status Offenses New Cases Filed, 2002-2011



Note: Dependency data for 2002-2010 were collected manually. Dependency data for 2011 were provided by CPCMS.

# Union County

2011 Population Estimate: 44,847  
 Class of County: 7th  
 No. of Common Pleas Court Judgeships: 2  
 (Union and Snyder combined)



## 2011 Juvenile Dependency - Adjudicated Dependent Inventory



	Abuse/ Neglect	Status Offenses	Total	
Cases Pending 1/1/2011	22	1	23	
New Adjudicated Dependent Cases	10	2	12	
Other	0	0	0	
<b>Total Adjudicated Dependent Cases</b>	<b>32</b>	<b>3</b>	<b>35</b>	
<b><u>Court Supervision Terminated:</u></b>				
Family Reunification	2	0	2	22.2%
Adoption	3	0	3	33.3%
Placement with a Relative/Guardian	3	0	3	33.3%
Aged Out	0	0	0	
Other Permanency Outcomes*	1	0	1	11.1%
Other**	0	0	0	
<b>Total Adjudicated Dependent Cases Terminated</b>	<b>9</b>	<b>0</b>	<b>9</b>	<b>100.0%</b>
<b>Cases Pending 12/31/2011</b>	<b>23</b>	<b>3</b>	<b>26</b>	

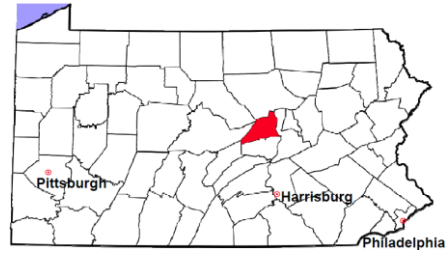
Data provided by CPCMS

\* Other Permanency Outcomes include: adjudicated delinquent, death due to natural causes, emancipation, permanent living arrangement, and parent has come forward.

\*\* Other includes cases where Court Supervision is terminated due to transfer out of jurisdiction, withdrawal and administrative closures.

# Union County

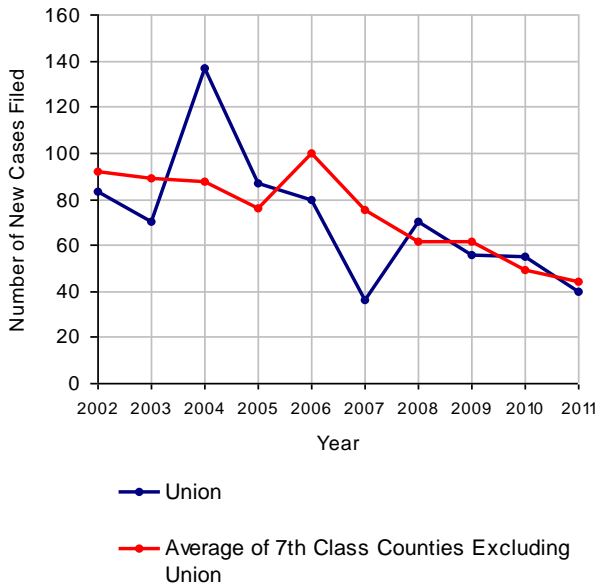
2011 Population Estimate: 44,847  
 Class of County: 7th  
 No. of Common Pleas Court Judgeships: 2  
 (Union and Snyder combined)



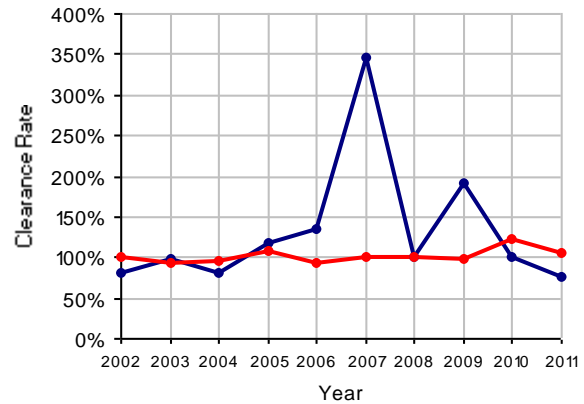
## 2011 Juvenile Delinquency

	No. of Cases
Cases Pending 1/1/2011	28
New Cases Filed in 2011	40
<b>Cases Available for Processing</b>	<b>68</b>
Processed By:	
Judge	17 56.7%
<b>Non-Judicial Officer</b>	<b>11 36.7%</b>
Other	2 6.7%
<b>Cases Processed</b>	<b>30 100.0%</b>
<b>Cases Pending 12/31/2011</b>	<b>38</b>

Juvenile Delinquency New Cases Filed, 2002-2011

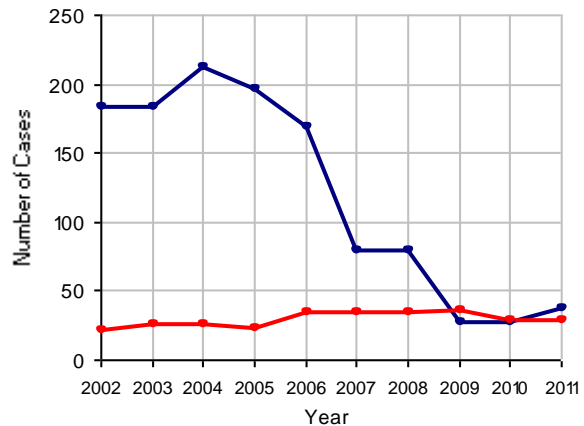


Clearance Rate, 2002-2011



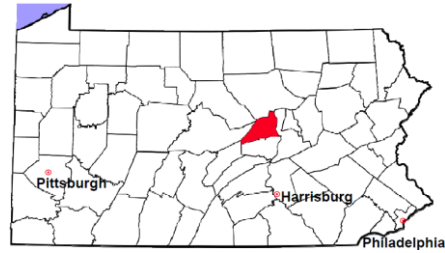
Note: Clearance Rate = Cases Processed / New Cases Filed

Cases Pending at the End of Year, 2002-2011



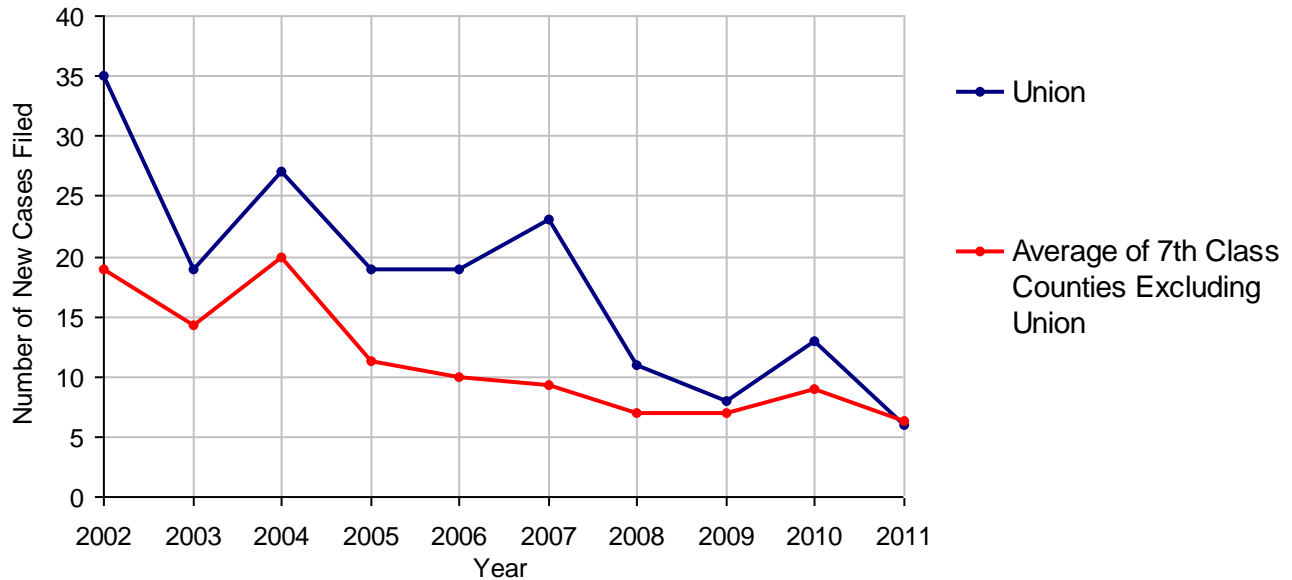
# Union County

2011 Population Estimate: 44,847  
 Class of County: 7th  
 No. of Common Pleas Court Judgeships: 2  
 (Union and Snyder combined)



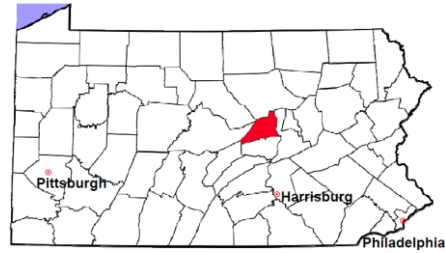
<b>2011 Accounts</b>	<b>No. of Cases</b>
Cases Pending 1/1/2011	2
New Cases Filed in 2011	6
<b>Cases Available for Processing</b>	<b>8</b>
Processed By:	
Contested before a Judge	0
Contested before a Non-judicial Officer	0
Uncontested	7    100.0%
Other	0
<b>Cases Processed</b>	<b>7    100.0%</b>
<b>Cases Pending 12/31/2011</b>	<b>1</b>

**Accounts New Cases Filed, 2002-2011**



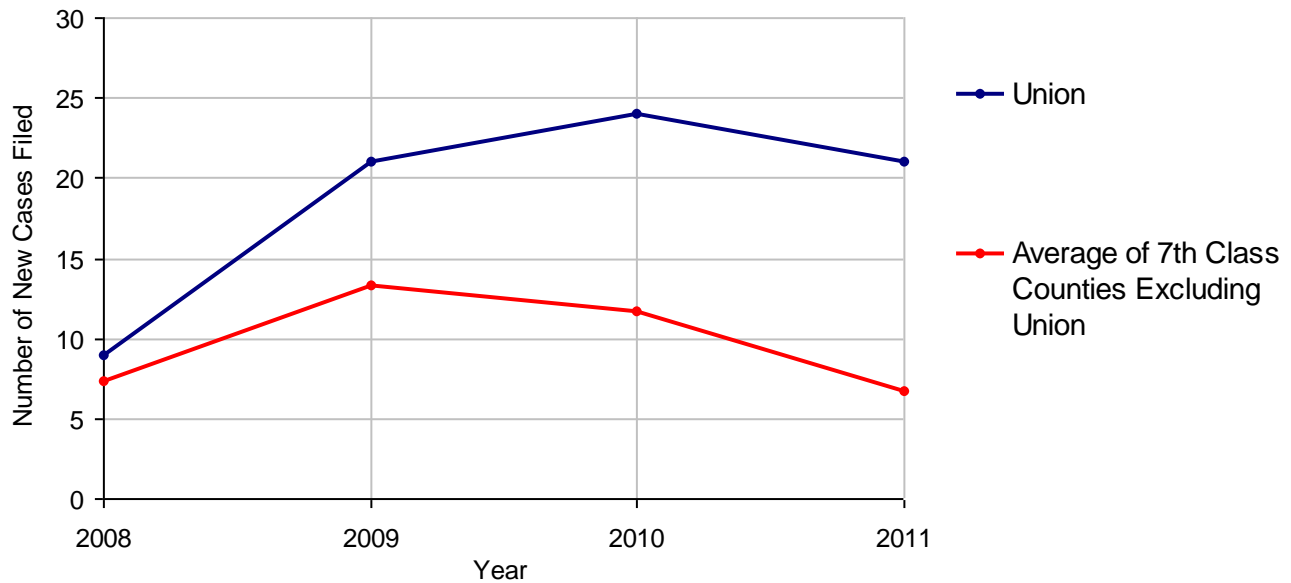
# Union County

2011 Population Estimate: 44,847  
 Class of County: 7th  
 No. of Common Pleas Court Judgeships: 2  
 (Union and Snyder combined)



<b>2011 Adoptions</b>		<b>No. of Cases</b>	
Cases Pending 1/1/2011		8	
New Cases Filed in 2011		21	
<b>Cases Available for Processing</b>		<b>29</b>	
Processed By:			
Contested before a Judge	Granted	5	25.0%
	Denied	0	
Uncontested	Granted	15	75.0%
	Denied	0	
Other		0	
<b>Cases Processed</b>		<b>20</b>	<b>100.0%</b>
<b>Cases Pending 12/31/2011</b>		<b>9</b>	

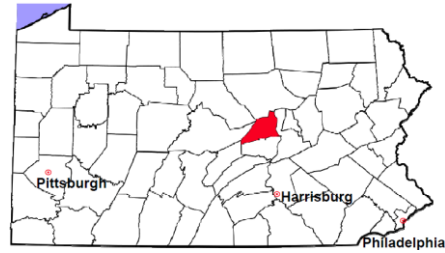
**Adoptions New Cases Filed, 2008-2011**



Note: Prior to 2008, each petition was counted as one new case, regardless of the number of children listed on the petition. Starting in 2008, each child listed on a petition is counted as a separate case. Therefore, statistics for the years since 2008 should not be compared to those for the years prior to 2008.

# Union County

2011 Population Estimate: 44,847  
 Class of County: 7th  
 No. of Common Pleas Court Judgeships: 2  
 (Union and Snyder combined)



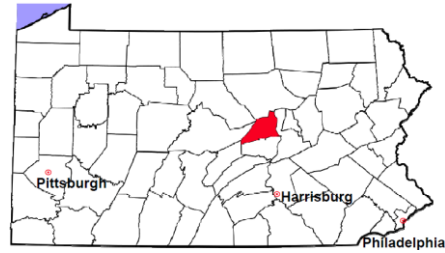
2011 Relinquishments/Terminations		No. of Cases
Cases Pending 1/1/2011		2
New Cases Filed in 2011		3
<b>Cases Available for Processing</b>		<b>5</b>
Processed By:		
Contested before a Judge	1	20.0%
Uncontested	4	80.0%
Other	0	
<b>Cases Processed</b>	<b>5</b>	<b>100.0%</b>
<b>Cases Pending 12/31/2011</b>		<b>0</b>

Relinquishments/Terminations New Cases Filed, 2002-2011



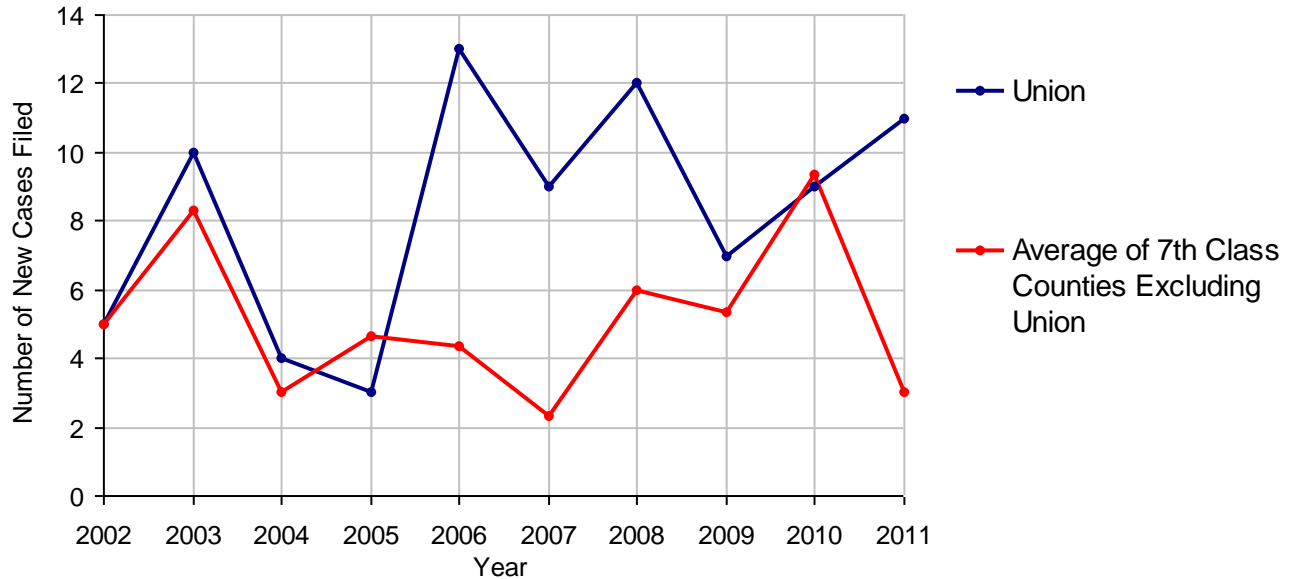
# Union County

2011 Population Estimate: 44,847  
 Class of County: 7th  
 No. of Common Pleas Court Judgeships: 2  
 (Union and Snyder combined)



<b>2011 Appointment of Guardians</b>		<b>No. of Cases</b>
Cases Pending 1/1/2011		1
New Cases Filed in 2011		11
<b>Cases Available for Processing</b>		<b>12</b>
Processed By:		
Contested before a Judge	1	11.1%
Uncontested	8	88.9%
Other	0	
<b>Cases Processed</b>	<b>9</b>	<b>100.0%</b>
<b>Cases Pending 12/31/2011</b>		<b>3</b>

**Appointment of Guardians New Cases Filed, 2002-2011**

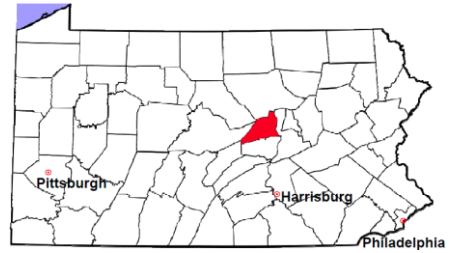


# Union County

2011 Population Estimate: 44,847

Class of County: 7th

No. of Common Pleas Court Judgeships: 2  
(Union and Snyder combined)



---

## 2011 Jury Activity and Performance Measures

---

A. Juror Days	239
B. Number Sent to Voir Dire	217
Voir Dire Attendance Rate (B/A * 100)	90.8%
C. Number of Jurors Selected	98
Juror Selection Rate (C/B * 100)	45.2%

---

Note: In mid-2011, AOPC began utilizing the National Center for State Courts' Jury Managers' Toolbox for collecting jury data. This has resulted in limited jury performance measures being reported for 2011. Additional data will be available in 2012.