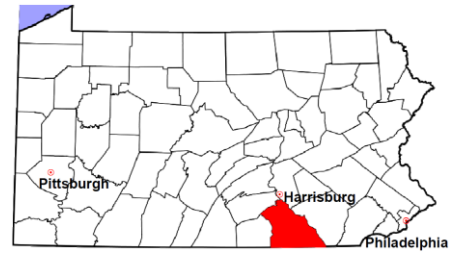


York County

2011 Population Estimate: 436,770

Class of County: 3rd

No. of Common Pleas Court Judgeships: 15



2011 Criminal - New Cases by Case Type



Case Type	Felony	Misdemeanor	Summary /Ungraded	Total
Person	433	479	4	916
Property	862	1,090	21	1,973
Drug	589	974	3	1,566
Weapon	96	46	0	142
Public Order	147	508	1	656
Motor Vehicle - DWI/DUI	0	2,340	0	2,340
Motor Vehicle - Other	4	30	1	35
Other	1	0	1	2
Total	2,132	5,467	31	7,630
	27.9%	71.7%	0.4%	100.0%

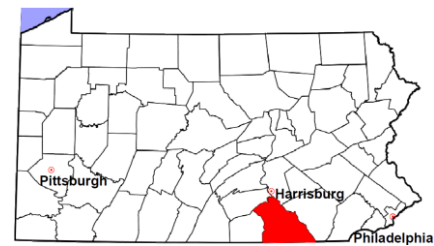
Data provided by CPCMS

York County

2011 Population Estimate: 436,770

Class of County: 3rd

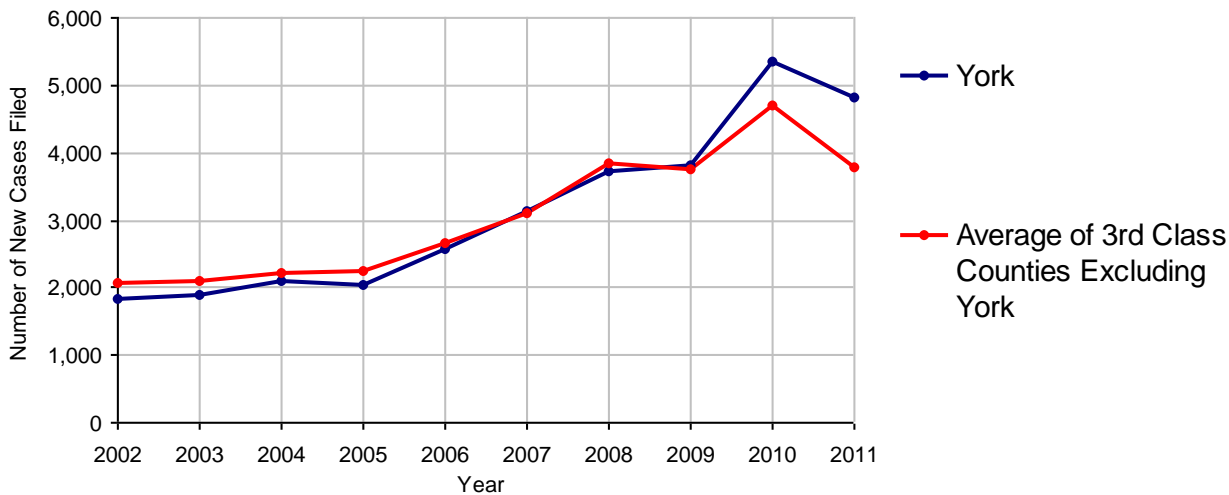
No. of Common Pleas Court Judgeships: 15



2011 Civil	Civil Action	Other	Total
Cases Pending 1/1/2011	16,182	14,547	30,729
Docketed Cases	2,803	2,009	4,812
Arbitration Appeals	17	3	20
Transferred In	6	1	7
Returned to Active	0	0	0
Cases Available for Processing	19,008	16,560	35,568
Disposed By:			
Default Judgments	0	1	1
Cases Decided by Arbitration Board	107	20	127
Dispositive Motions	9	7	16
Settlements	2	9	11
Moved to Inactive Status	0	1	1
Transferred/Withdrawn	3	10	13
Pa.R.J.A. 1901 Administrative Purge	1,164	452	1,616
Other	2,217	1,329	3,546
Jury Trial	7	2	9
Non-Jury Trial	2	6	8
Total Cases Disposed	3,511	1,837	5,348
Cases Pending 12/31/2011	15,497	14,723	30,220

Age of Pending Cases as of 12/31/2011 (Civil Action Only)		
0-6 months	1,007	6.5%
7-12 months	1,197	7.7%
13-18 months	1,135	7.3%
19-24 months	1,175	7.6%
25-30 months	1,294	8.4%
31-36 months	1,077	6.9%
37-42 months	987	6.4%
43-48 months	658	4.2%
49-54 months	681	4.4%
55-60 months	462	3.0%
61-66 months	406	2.6%
67-72 months	288	1.9%
Over 72 months	5,130	33.1%
Total	15,497	100.0%

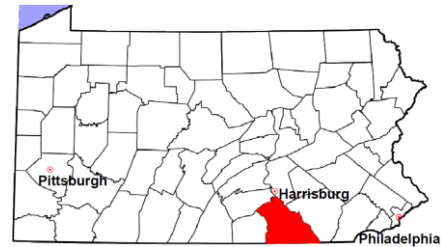
Docketed Cases, 2002-2011



Note: Prior to June 2010, docketed cases under the "Other" category were not reported. The reporting of these cases starting from June 2010 may contribute to an increase in docketed cases from 2009 to 2010.

York County

2011 Population Estimate: 436,770
 Class of County: 3rd
 No. of Common Pleas Court Judgeships: 15



2011 Civil - Docketed Cases Listed by Case Type

TORT (does not include mass tort)

Intentional	11
Malicious Prosecution	0
Motor Vehicle	316
Nuisance	1
Premise Liability	60
Product Liability	17
Slander/Libel/Defamation	3
Other	56

MASS TORT

Asbestos	0
Tobacco	0
Toxic Tort - DES	0
Toxic Tort - Implant	0
Toxic Waste	0
Other	1

PROFESSIONAL LIABILITY

Dental	1
Legal	8
Medical Malpractice	16
Other	10

CONTRACT

(does not include judgments)

Buyer Plaintiff	34
Debt Collection:	
Credit Card	1,513
Other	578
Employment Dispute:	
Discrimination	5
Other	12
Employment Dispute: Other	12
Other	110

REAL PROPERTY

Ejectment*	161
Eminent Domain/ Condemnation*	36
Ground Rent	12
Landlord/Tenant Dispute	39
Mortgage Forclosures:	
Residential*	1,227
Commercial*	12
Partition of Real Property*	6
Quiet Title*	46
Other*	23

CIVIL APPEALS

Administrative Agencies

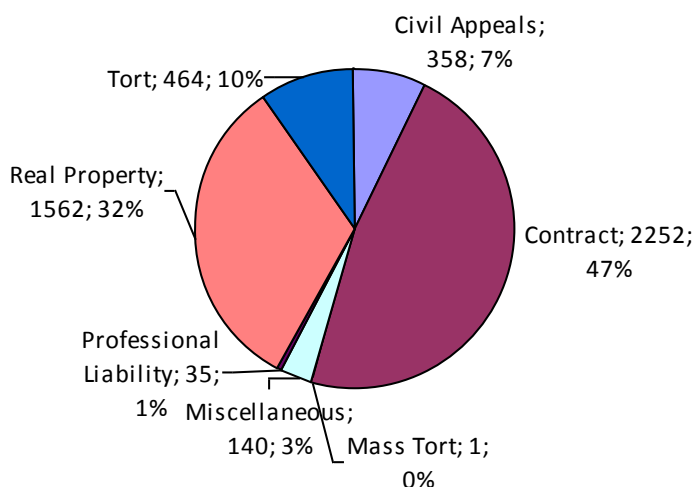
Board of Assessment*	89
Board of Elections*	9
Dept. of Transportation*	138
Zoning Board*	8
Statutory Appeal - Other*	10
Other*	104

MISCELLANEOUS

Common Law/ Statutory Arbitration*	2
Declaratory Judgment*	21
Mandamus*	4
Non-Domestic Relations Restraining Order*	0
Quo Warranto*	1
Replevin*	31
Other*	81

TOTAL DOCKETED CASES:
4,812

* Civil Other



Of the Docketed Cases:

Pro Se Filings:	215	4.5%
Class Action Suits:	4	0.1%
MDJ Appeals:	211	4.4%

York County

2011 Population Estimate: 436,770
 Class of County: 3rd
 No. of Common Pleas Court Judgeships: 15

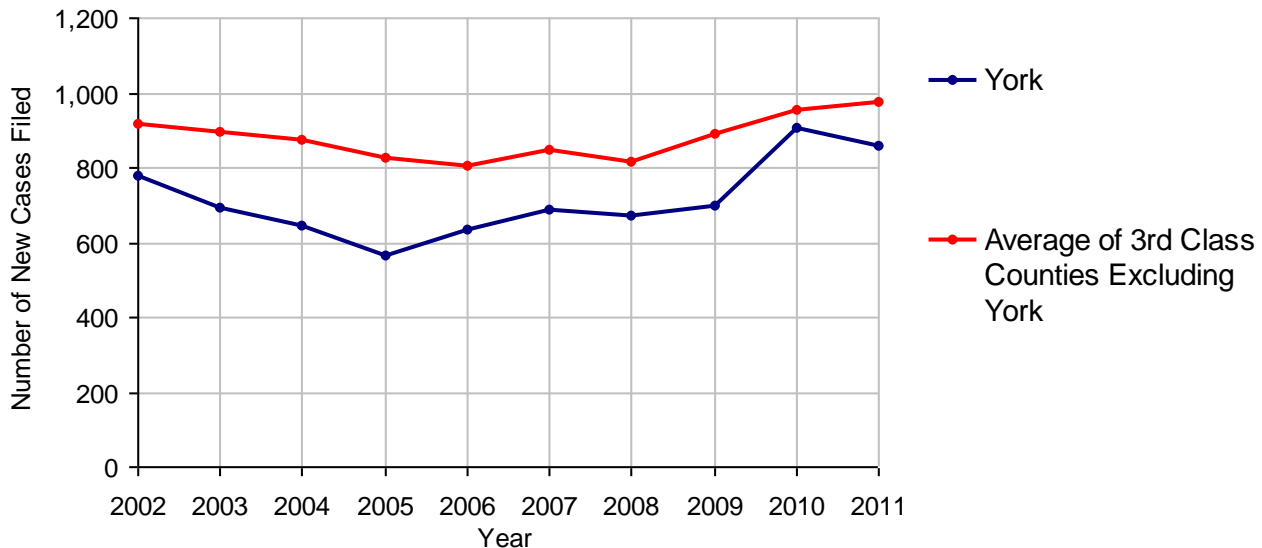


2011 Protection From Abuse

**No. of
Petitions**

Cases Pending 1/1/2011	22
New Cases Filed in 2011	859
<i>Of these, Petitions Requesting Temporary Orders: 859 (100.0%)</i>	
<i>Temporary Orders DENIED: 392 (45.6%), Temporary Orders GRANTED: 467 (54.4%)</i>	
Cases Available for Processing	881
Processed By:	
Temporary Order DENIED After Ex Parte Hearing and No Evidentiary Hearing Scheduled	0
Temporary Order DISMISSED After Evidentiary Hearing and No Final Order Entered	0
Final Order DENIED After Evidentiary Hearing Before a Judge	52 6.1%
Final Order GRANTED After Evidentiary Hearing Before a Judge	78 9.2%
Plaintiff Did Not Appear For Evidentiary Hearing	217 25.6%
Final Order by STIPULATION OR AGREEMENT Between the Parties	229 27.0%
Petition WITHDRAWN by Plaintiff	272 32.0%
TRANSFERRED to Another Jurisdiction	0
DECEASED Party	0
Other	1 0.1%
Cases Processed	849 100.0%
Cases Pending 12/31/2011	32

PFA New Cases Filed, 2002-2011

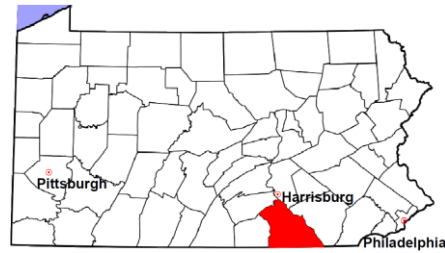


York County

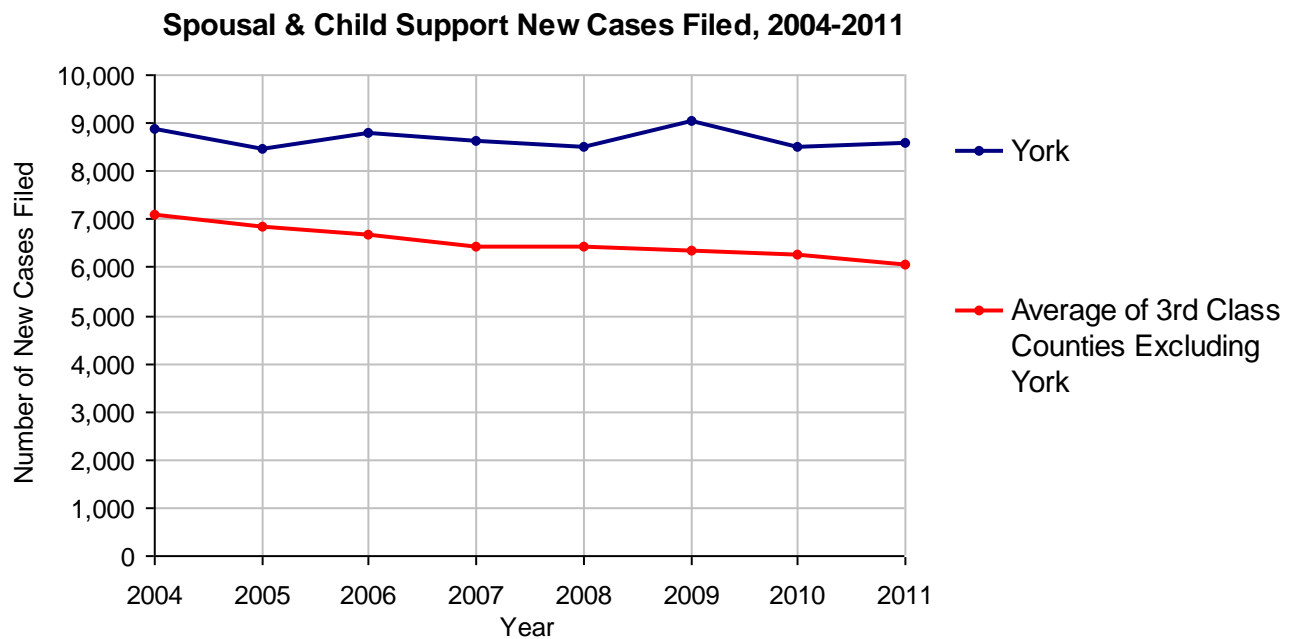
2011 Population Estimate: 436,770

Class of County: 3rd

No. of Common Pleas Court Judgeships: 15



2011 Spousal & Child Support	No. of Petitions	
Cases Pending 1/1/2011	1,372	
New Cases Filed in 2011	8,580	
Dockets Transferred In (+)	81	
Dockets Transferred Out (-)	65	
Cases Available for Processing	9,968	
Processed By:		
Judge	340	4.1%
Intake Officer	8,005	95.9%
Hearing Officer	0	
Other	0	
Cases Processed	8,345	100.0%
Cases Pending 12/31/2011	1,623	

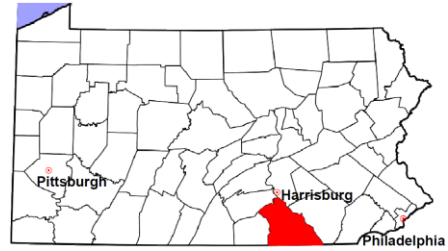


York County

2011 Population Estimate: 436,770

Class of County: 3rd

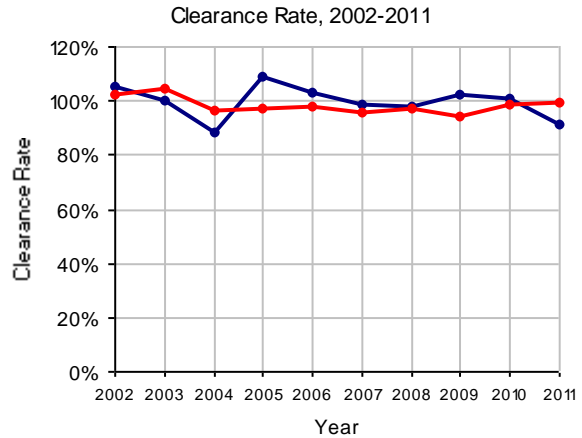
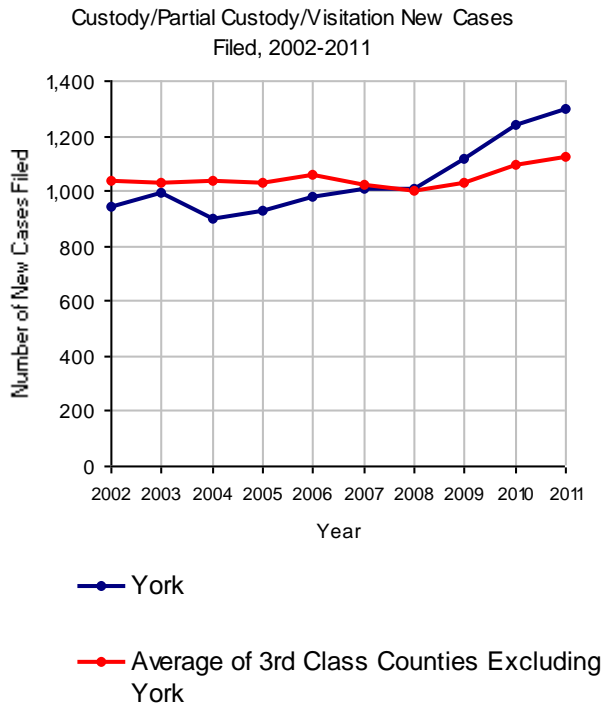
No. of Common Pleas Court Judgeships: 15



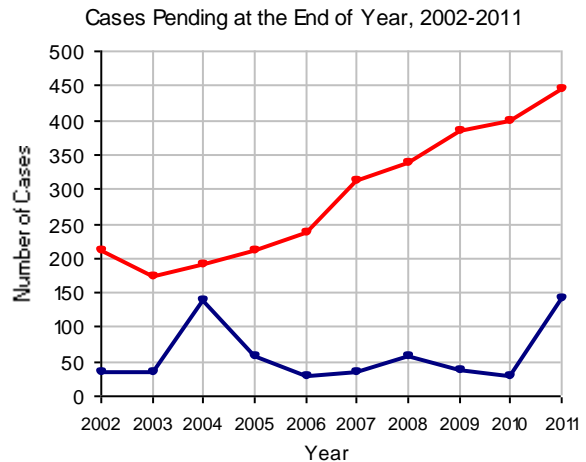
2011 Custody/Partial Custody/Visitation

No. of
Petitions

Cases Pending 1/1/2011	30
New Cases Filed in 2011	1,299
Cases Available for Processing	1,329
Processed By:	
Judge	169 14.2%
Non-Judicial Officer	954 80.3%
Other	65 5.5%
Cases Processed	1,188 100.0%
Cases Pending 12/31/2011	141

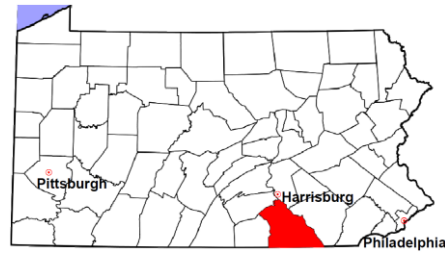


Note: Clearance Rate = Cases Processed / New Cases Filed



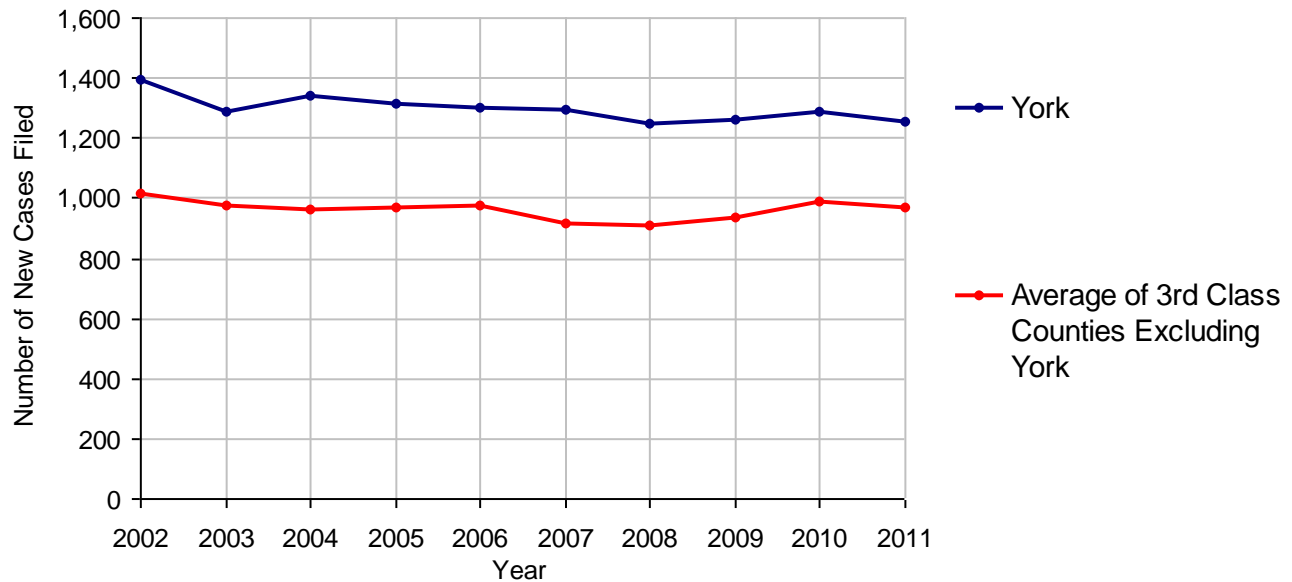
York County

2011 Population Estimate: 436,770
 Class of County: 3rd
 No. of Common Pleas Court Judgeships: 15



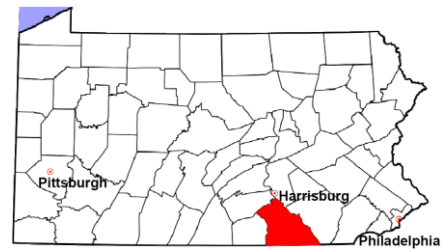
2011 Divorce	No. of Petitions	
Cases Pending 1/1/2011	2,925	
New Cases Filed in 2011	1,254	
Cases Available for Processing	4,179	
Processed By:		
Contested Before a Judge	117	9.8%
Contested Before a Master	21	1.8%
Uncontested	1,049	87.8%
Other	8	0.7%
Cases Processed	1,195	100.0%
Cases Pending 12/31/2011	2,984	

Divorce New Cases Filed, 2002-2011



York County

2011 Population Estimate: 436,770
 Class of County: 3rd
 No. of Common Pleas Court Judgeships: 15



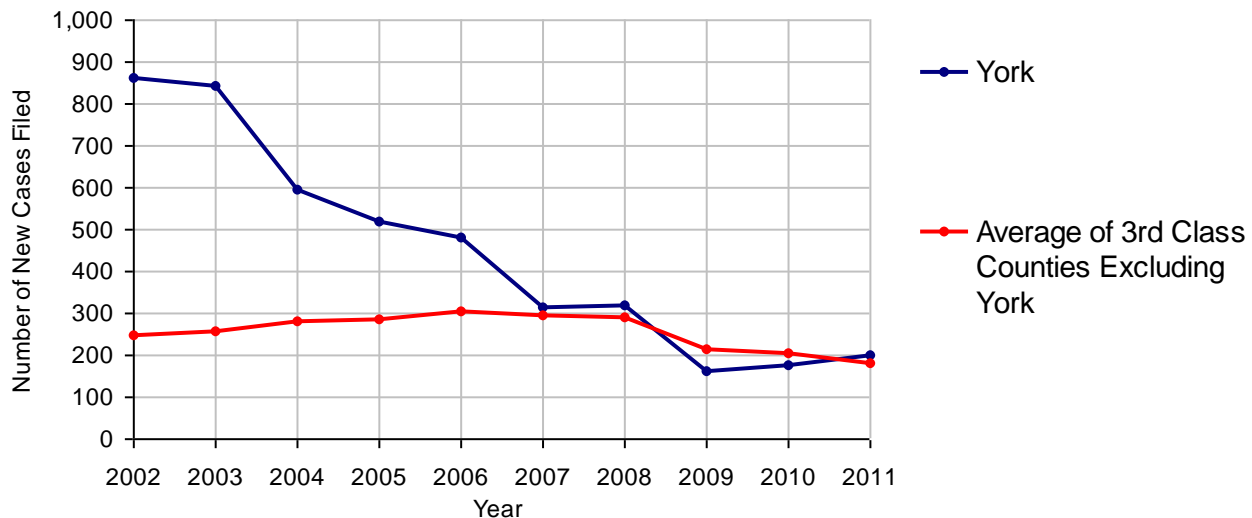
2011 Juvenile Dependency - Active Dependent Inventory



	Abuse/ Neglect	Status Offenses	Total
Cases Pending 1/1/2011	32	0	32
New Petitions Filed in 2011	200	0	200
Other	3	0	3
Total Petitions Available for Processing	235	0	235
Processed by:			
Adjudicated Dependent			
Judge	153	0	153
Master	0	0	0
Adjudicated NOT Dependent			
Judge	4	0	4
Master	0	0	0
Withdrawn/Dismissed/Inactive	35	0	35
Other	3	0	3
Total Petitions Processed	195	0	195
Cases Pending 12/31/2011	40	0	40

Data provided by CPCMS

Abuse/Neglect and Status Offenses New Cases Filed, 2002-2011



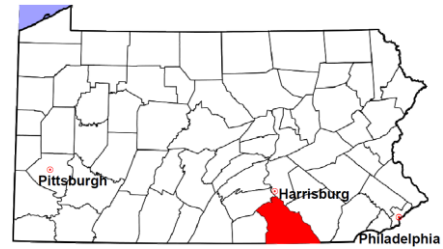
Note: Dependency data for 2002-2010 were collected manually. Dependency data for 2011 were provided by CPCMS.

York County

2011 Population Estimate: 436,770

Class of County: 3rd

No. of Common Pleas Court Judgeships: 15



2011 Juvenile Dependency - Adjudicated Dependent Inventory

	Abuse/ Neglect	Status Offenses	Total	
Cases Pending 1/1/2011	304	0	304	
New Adjudicated Dependent Cases	153	0	153	
Other	5	0	5	
Total Adjudicated Dependent Cases	462	0	462	
<u>Court Supervision Terminated:</u>				
Family Reunification	30	0	30	25.4%
Adoption	17	0	17	14.4%
Placement with a Relative/Guardian	24	0	24	20.3%
Aged Out	31	0	31	26.3%
Other Permanency Outcomes*	9	0	9	7.6%
Other**	7	0	7	5.9%
Total Adjudicated Dependent Cases Terminated	118	0	118	100.0%
Cases Pending 12/31/2011	344	0	344	

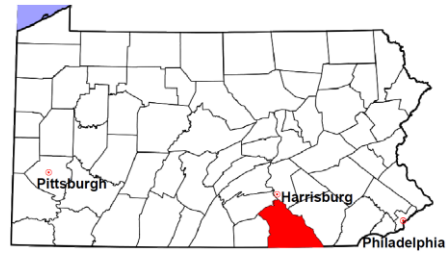
Data provided by CPCMS

* Other Permanency Outcomes include: adjudicated delinquent, death due to natural causes, emancipation, permanent living arrangement, and parent has come forward.

** Other includes cases where Court Supervision is terminated due to transfer out of jurisdiction, withdrawal and administrative closures.

York County

2011 Population Estimate: 436,770
 Class of County: 3rd
 No. of Common Pleas Court Judgeships: 15

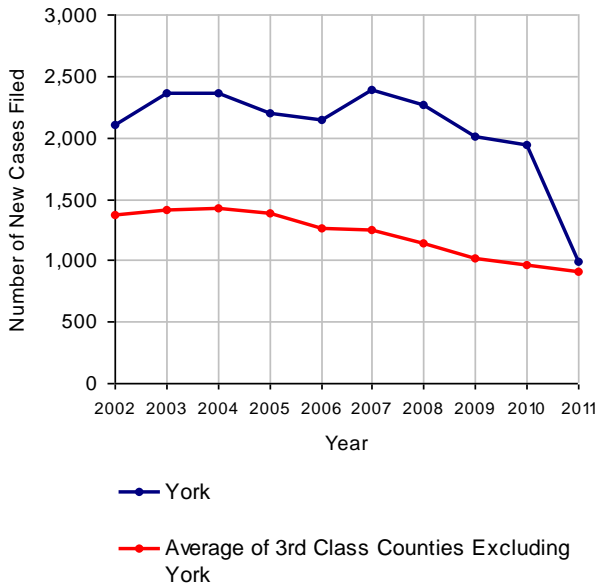


2011 Juvenile Delinquency

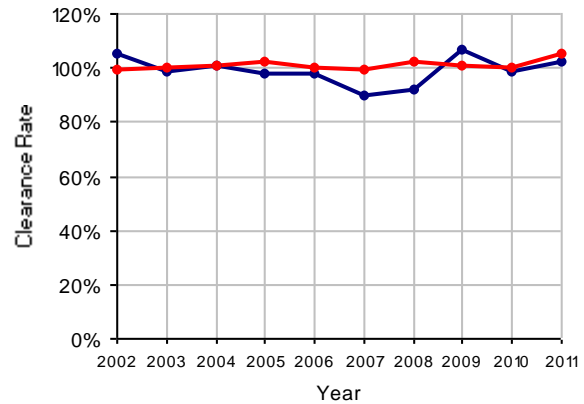
	No. of Cases
Cases Pending 1/1/2011	336 ^(R)
New Cases Filed in 2011	991
Cases Available for Processing	1,327
Processed By:	
Judge	458 45.3%
Non-Judicial Officer	492 48.7%
Other	61 6.0%
Cases Processed	1,011 100.0%
Cases Pending 12/31/2011	316

(R) - Revised

Juvenile Delinquency New Cases Filed, 2002-2011

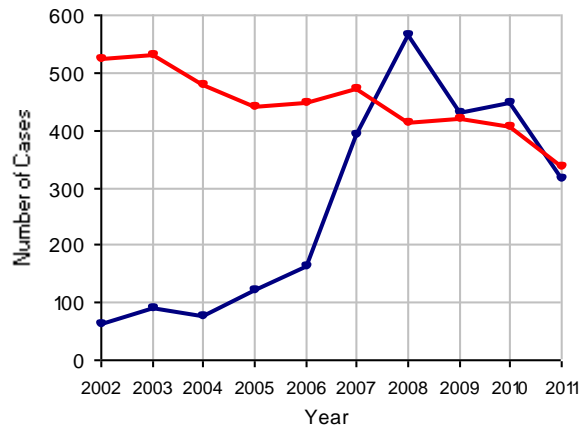


Clearance Rate, 2002-2011



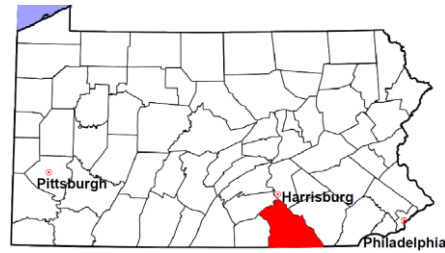
Note: Clearance Rate = Cases Processed / New Cases Filed

Cases Pending at the End of Year, 2002-2011



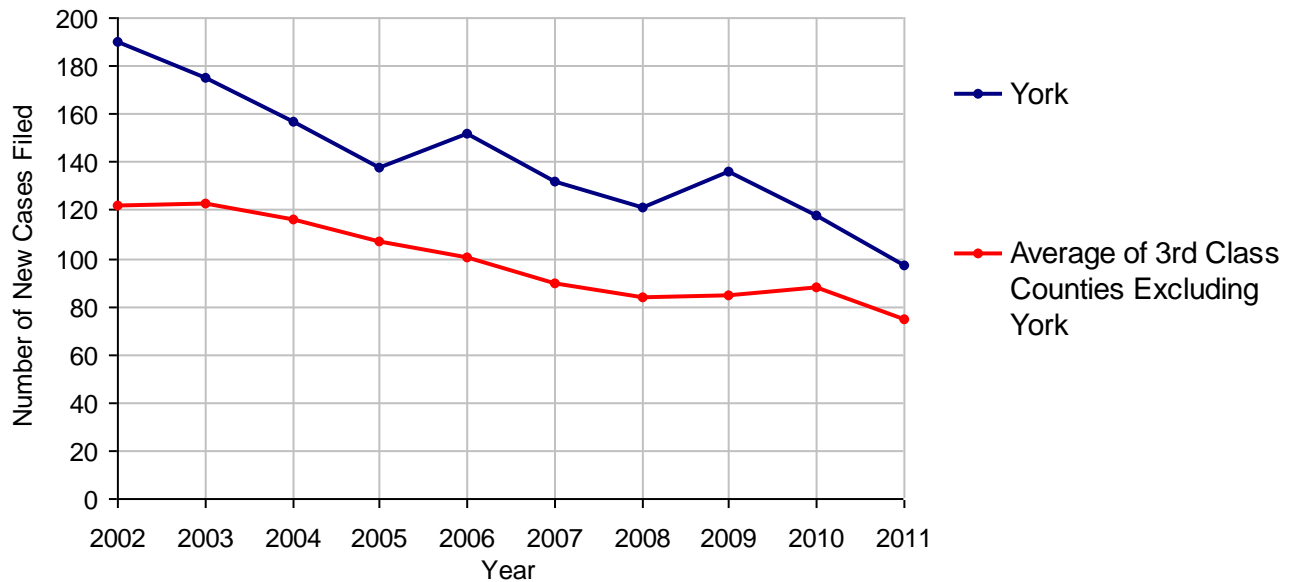
York County

2011 Population Estimate: 436,770
 Class of County: 3rd
 No. of Common Pleas Court Judgeships: 15



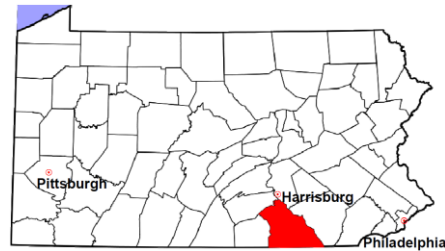
2011 Accounts	No. of Cases	
Cases Pending 1/1/2011	33	
New Cases Filed in 2011	97	
Cases Available for Processing	130	
Processed By:		
Contested before a Judge	15	14.7%
Contested before a Non-judicial Officer	0	
Uncontested	85	83.3%
Other	2	2.0%
Cases Processed	102	100.0%
Cases Pending 12/31/2011	28	

Accounts New Cases Filed, 2002-2011



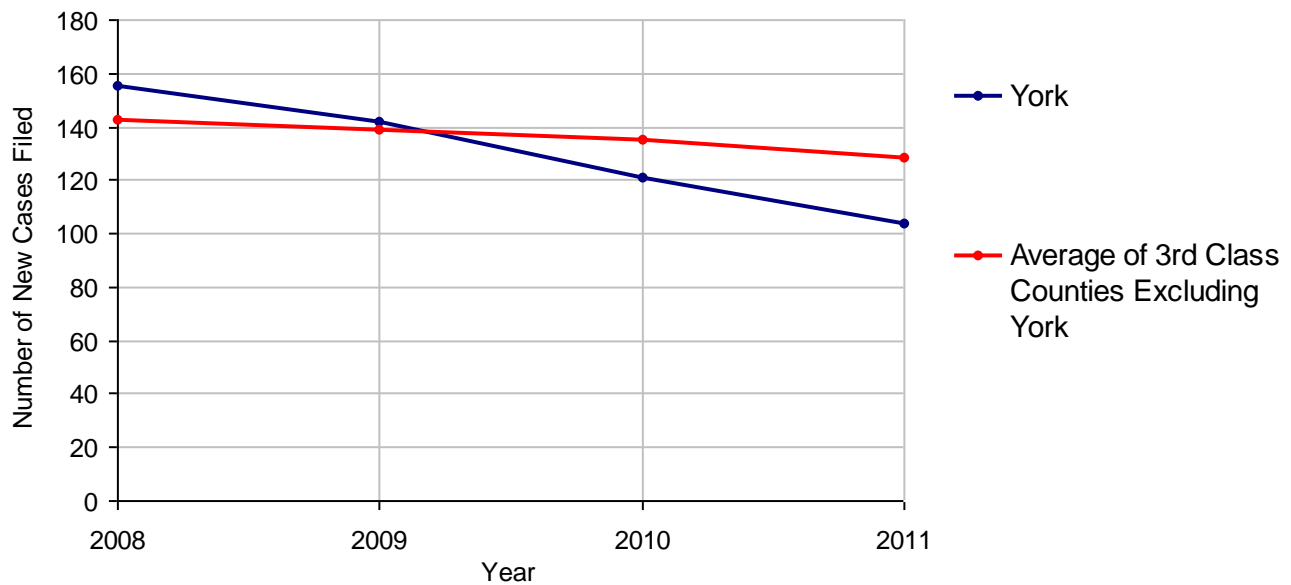
York County

2011 Population Estimate: 436,770
 Class of County: 3rd
 No. of Common Pleas Court Judgeships: 15



2011 Adoptions		No. of Cases	
Cases Pending 1/1/2011		37	
New Cases Filed in 2011		104	
Cases Available for Processing		141	
Processed By:			
Contested before a Judge	Granted	1	1.0%
	Denied	1	1.0%
Uncontested	Granted	93	96.9%
	Denied	0	
Other		1	1.0%
Cases Processed		96	100.0%
Cases Pending 12/31/2011		45	

Adoptions New Cases Filed, 2008-2011



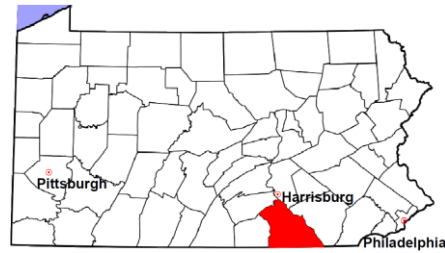
Note: Prior to 2008, each petition was counted as one new case, regardless of the number of children listed on the petition. Starting in 2008, each child listed on a petition is counted as a separate case. Therefore, statistics for the years since 2008 should not be compared to those for the years prior to 2008.

York County

2011 Population Estimate: 436,770

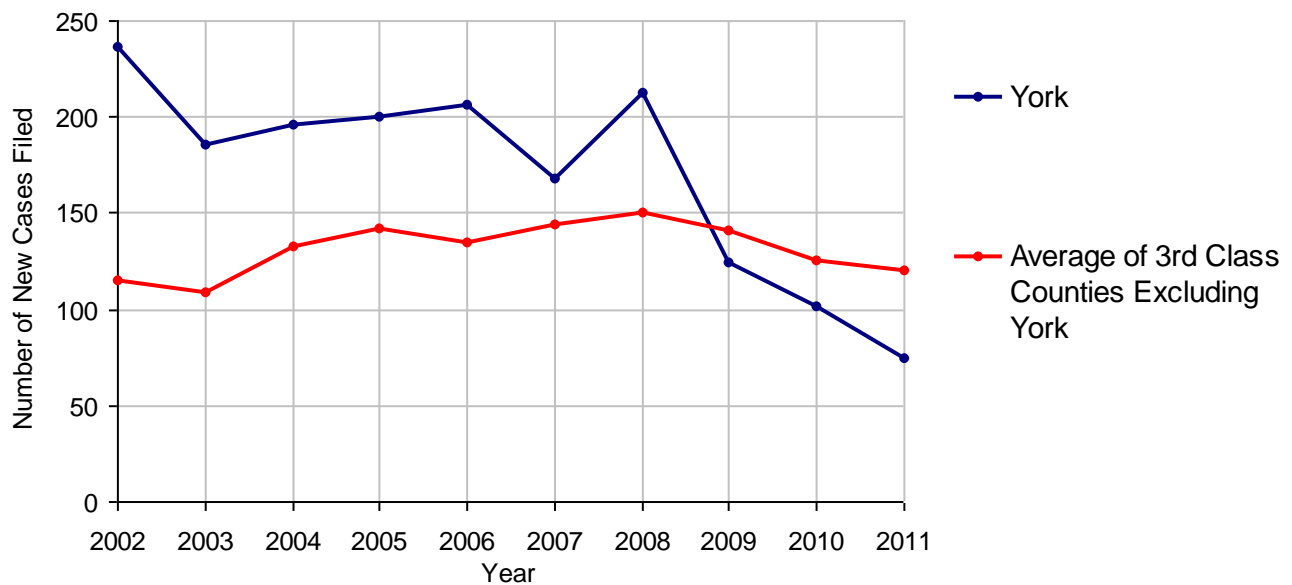
Class of County: 3rd

No. of Common Pleas Court Judgeships: 15



2011 Relinquishments/Terminations	No. of Cases
Cases Pending 1/1/2011	40
New Cases Filed in 2011	75
Cases Available for Processing	115
Processed By:	
Contested before a Judge	22 28.2%
Uncontested	54 69.2%
Other	2 2.6%
Cases Processed	78 100.0%
Cases Pending 12/31/2011	37

Relinquishments/Terminations New Cases Filed, 2002-2011

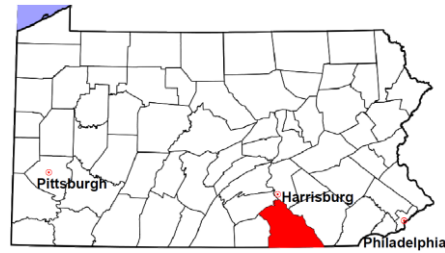


York County

2011 Population Estimate: 436,770

Class of County: 3rd

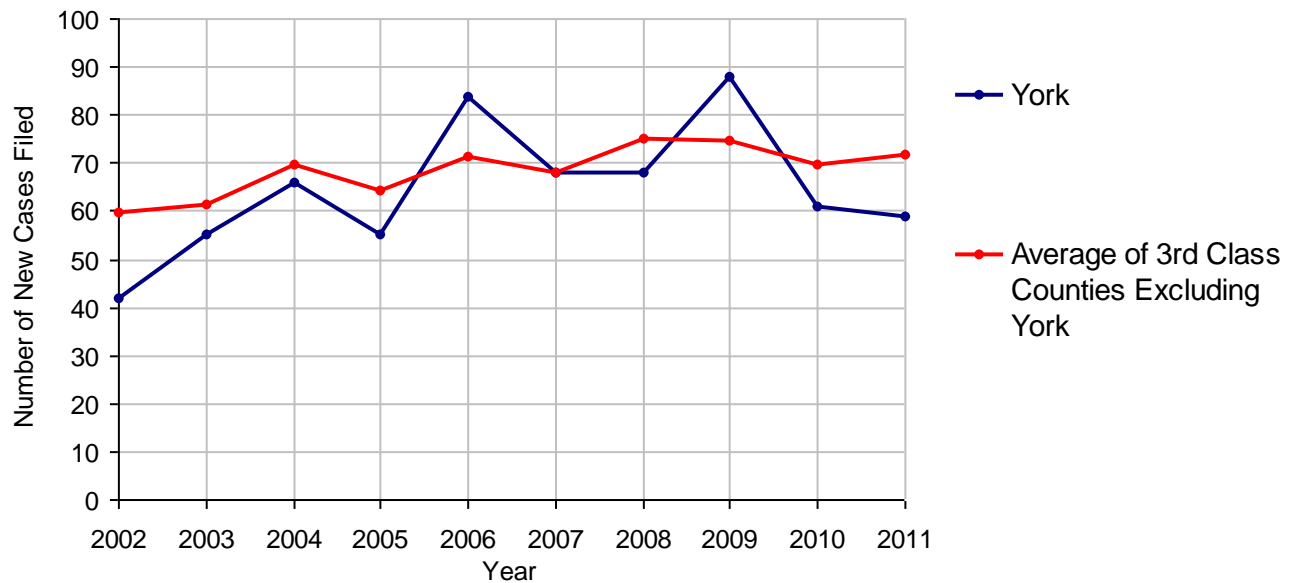
No. of Common Pleas Court Judgeships: 15



2011 Appointment of Guardians

	No. of Cases
Cases Pending 1/1/2011	12
New Cases Filed in 2011	59
Cases Available for Processing	71
Processed By:	
Contested before a Judge	4 6.6%
Uncontested	48 78.7%
Other	9 14.8%
Cases Processed	61 100.0%
Cases Pending 12/31/2011	10

Appointment of Guardians New Cases Filed, 2002-2011

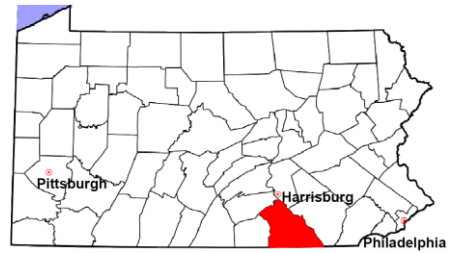


York County

2011 Population Estimate: 436,770

Class of County: 3rd

No. of Common Pleas Court Judgeships: 15



2011 Jury Activity and Performance Measures

A. Juror Days	8,493
B. Number Sent to Voir Dire	4,013
Voir Dire Attendance Rate (B/A * 100)	47.3%
C. Number of Jurors Selected	1,605
Juror Selection Rate (C/B * 100)	40.0%

Note: In mid-2011, AOPC began utilizing the National Center for State Courts' Jury Managers' Toolbox for collecting jury data. This has resulted in limited jury performance measures being reported for 2011. Additional data will be available in 2012.