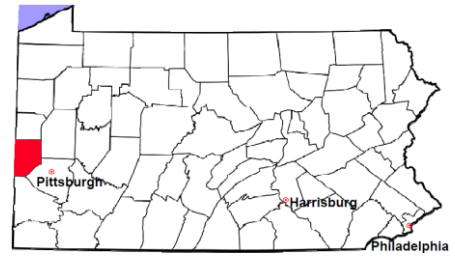


# Beaver County

2011 Population Estimate: 170,414  
 Class of County: 4th  
 No. of Common Pleas Court Judgeships: 7



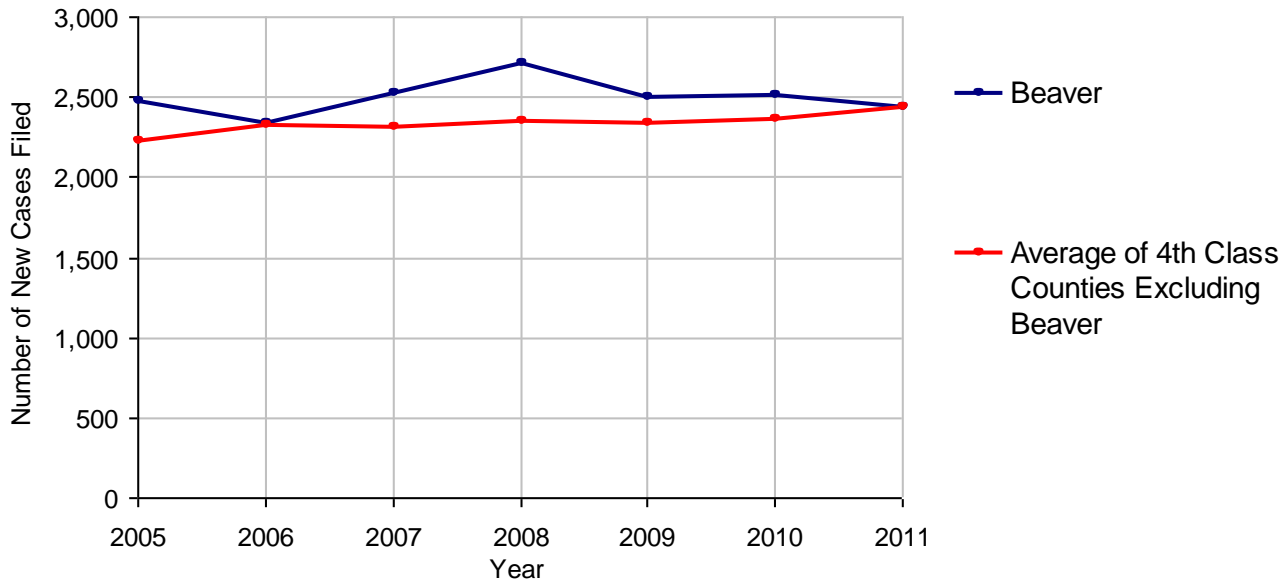
2011 Criminal	No. of Cases
Cases Pending 1/1/2011	889
New Cases Filed in 2011	2,431
Reopened Cases	218
<b>Cases Available for Disposition</b>	<b>3,538</b>
<b>Disposed by:</b>	
Withdrawn/Dismissed	245 9.2%
ARD	583 21.9%
Guilty Plea	1,634 61.5%
Non-Jury Trial	19 0.7%
Jury Trial	28 1.1%
Inactive	71 2.7%
Other	77 2.9%
<b>Total Cases Disposed</b>	<b>2,657 100.0%</b>
<b>Cases Pending 12/31/2011</b>	<b>881</b>
Cases Awaiting Sentencing	39



Age of Pending Cases as of 12/31/2011		
0-60 Days	329	37.3%
61-120 Days	194	22.0%
121-180 Days	144	16.3%
181-240 Days	70	7.9%
241-300 Days	55	6.2%
301-360 Days	18	2.0%
Over 360 Days	71	8.1%
<b>Total</b>	<b>881</b>	<b>100.0%</b>

Data provided by CPCMS

**Criminal New Cases Filed, 2005-2011**

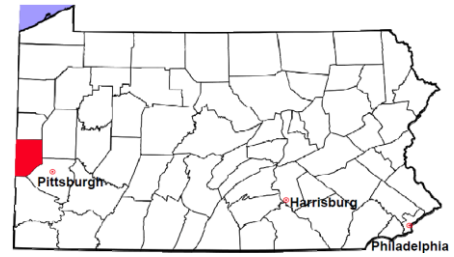


# Beaver County

2011 Population Estimate: 170,414

Class of County: 4th

No. of Common Pleas Court Judgeships: 7



## 2011 Criminal - New Cases by Case Type

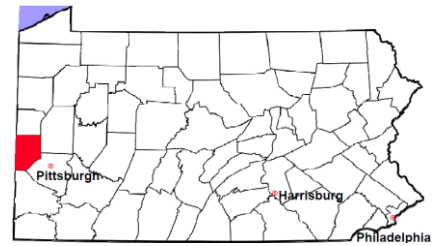


Case Type	Felony	Misdemeanor	Summary /Ungraded	Total
Person	191	229	0	420
Property	438	432	3	873
Drug	165	157	0	322
Weapon	31	10	0	41
Public Order	69	165	1	235
Motor Vehicle - DWI/DUI	0	524	0	524
Motor Vehicle - Other	0	13	0	13
Other	2	1	0	3
<b>Total</b>	<b>896</b>	<b>1,531</b>	<b>4</b>	<b>2,431</b>
	<b>36.9%</b>	<b>63.0%</b>	<b>0.2%</b>	<b>100.0%</b>

Data provided by CPCMS

# Beaver County

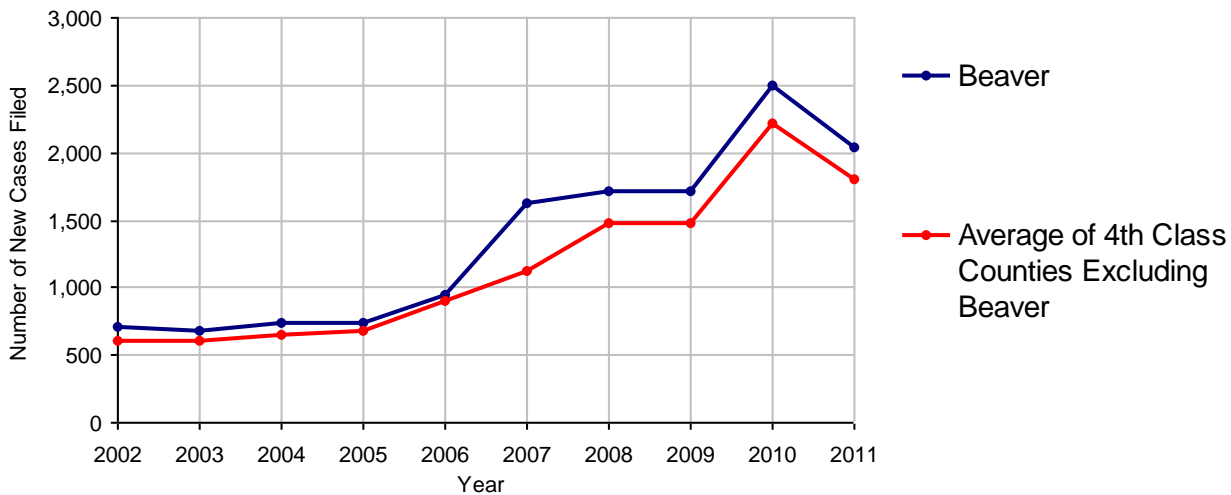
2011 Population Estimate: 170,414  
 Class of County: 4th  
 No. of Common Pleas Court Judgeships: 7



2011 Civil	Civil Action	Other	Total
Cases Pending 1/1/2011	5,700	3,812	9,512
Docketed Cases	1,094	952	2,046
Arbitration Appeals	2	0	2
Transferred In	0	0	0
Returned to Active	0	0	0
<b>Cases Available for Processing</b>	<b>6,796</b>	<b>4,764</b>	<b>11,560</b>
Disposed By:			
Default Judgments	516	322	838
Cases Decided by Arbitration Board	55	18	73
Dispositive Motions	49	0	49
Settlements	823	41	864
Moved to Inactive Status	0	0	0
Transferred/Withdrawn	1	1	2
Pa.R.J.A. 1901 Administrative Purge	469	814	1,283
Other	671	783	1,454
Jury Trial	11	0	11
Non-Jury Trial	3	3	6
<b>Total Cases Disposed</b>	<b>2,598</b>	<b>1,982</b>	<b>4,580</b>
<b>Cases Pending 12/31/2011</b>	<b>4,198</b>	<b>2,782</b>	<b>6,980</b>

Age of Pending Cases as of 12/31/2011 (Civil Action Only)		
0-6 months	343	8.2%
7-12 months	248	5.9%
13-18 months	230	5.5%
19-24 months	324	7.7%
25-30 months	585	13.9%
31-36 months	558	13.3%
37-42 months	429	10.2%
43-48 months	417	9.9%
49-54 months	280	6.7%
55-60 months	182	4.3%
61-66 months	184	4.4%
67-72 months	172	4.1%
Over 72 months	246	5.9%
<b>Total</b>	<b>4,198</b>	<b>100.0%</b>

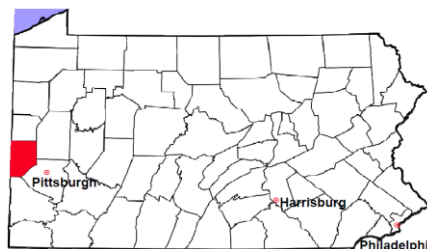
Docketed Cases, 2002-2011



Note: Prior to June 2010, docketed cases under the "Other" category were not reported. The reporting of these cases starting from June 2010 may contribute to an increase in docketed cases from 2009 to 2010.

# Beaver County

2011 Population Estimate: 170,414  
 Class of County: 4th  
 No. of Common Pleas Court Judgeships: 7



## 2011 Civil - Docketed Cases Listed by Case Type

### TORT (does not include mass tort)

Intentional	8
Malicious Prosecution	0
Motor Vehicle	147
Nuisance	0
Premise Liability	37
Product Liability	6
Slander/Libel/Defamation	2
Other	41

### MASS TORT

Asbestos	2
Tobacco	0
Toxic Tort - DES	0
Toxic Tort - Implant	0
Toxic Waste	0
Other	1

### PROFESSIONAL LIABILITY

Dental	0
Legal	2
Medical Malpractice	14
Other	3

### CONTRACT

(does not include judgments)

Buyer Plaintiff	16
Debt Collection:	
Credit Card	563
Debt Collection: Other	189
Employment Dispute:	
Discrimination	0
Employment Dispute: Other	4
Other	53

### REAL PROPERTY

Ejectment*	75
Eminent Domain/ Condemnation*	4
Ground Rent	0
Landlord/Tenant Dispute	6
Mortgage Forclosures:	
Residential*	323
Commercial*	13
Partition of Real Property*	4
Quiet Title*	28
Other*	28

### CIVIL APPEALS

#### *Administrative Agencies*

Board of Assessment*	12
Board of Elections*	2
Dept. of Transportation*	66
Zoning Board*	4
Statutory Appeal - Other*	18
Other*	195

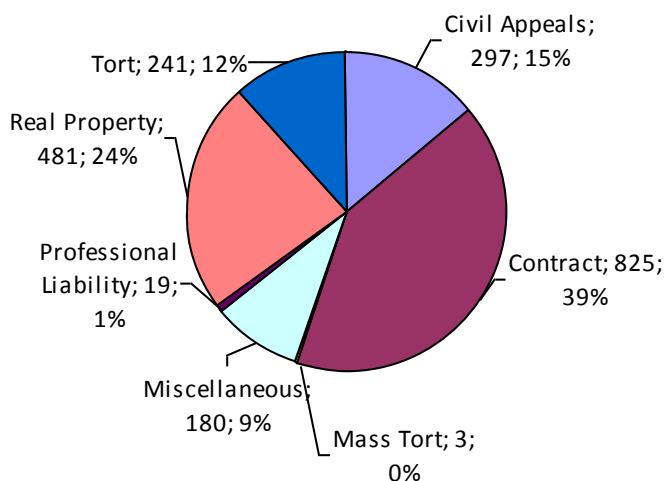
### MISCELLANEOUS

Common Law/ Statutory Arbitration*	0
Declaratory Judgment*	9
Mandamus*	0
Non-Domestic Relations Restraining Order*	0
Quo Warranto*	0
Replevin*	15
Other*	156

### **TOTAL DOCKETED CASES:**

**2,046**

\* Civil Other



### **Of the Docketed Cases:**

Pro Se Filings:	143	7.0%
Class Action Suits:	2	0.1%
MDJ Appeals:	206	10.1%

# Beaver County

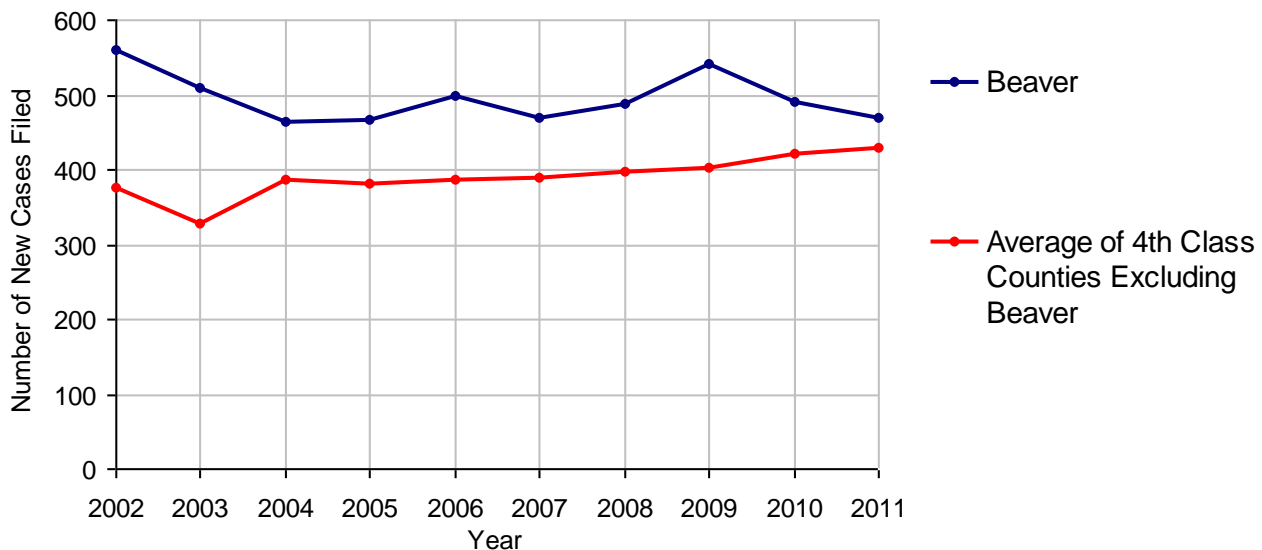
2011 Population Estimate: 170,414  
 Class of County: 4th  
 No. of Common Pleas Court Judgeships: 7



## 2011 Protection From Abuse

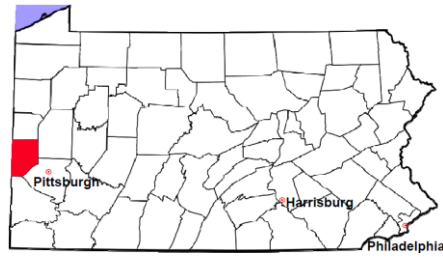
	No. of Petitions
Cases Pending 1/1/2011	77
New Cases Filed in 2011	469
<i>Of these, Petitions Requesting Temporary Orders: 469 (100.0%)</i>	
<i>Temporary Orders DENIED: 35 (7.5%), Temporary Orders GRANTED: 434 (92.5%)</i>	
<b>Cases Available for Processing</b>	<b>546</b>
Processed By:	
Temporary Order DENIED After Ex Parte Hearing and No Evidentiary Hearing Scheduled	28 6.0%
Temporary Order DISMISSED After Evidentiary Hearing and No Final Order Entered	85 18.1%
Final Order DENIED After Evidentiary Hearing Before a Judge	8 1.7%
Final Order GRANTED After Evidentiary Hearing Before a Judge	73 15.6%
Plaintiff Did Not Appear For Evidentiary Hearing	82 17.5%
Final Order by STIPULATION OR AGREEMENT Between the Parties	99 21.1%
Petition WITHDRAWN by Plaintiff	93 19.8%
TRANSFERRED to Another Jurisdiction	1 0.2%
DECEASED Party	0
Other	0
<b>Cases Processed</b>	<b>469 100.0%</b>
<b>Cases Pending 12/31/2011</b>	<b>77</b>

**PFA New Cases Filed, 2002-2011**

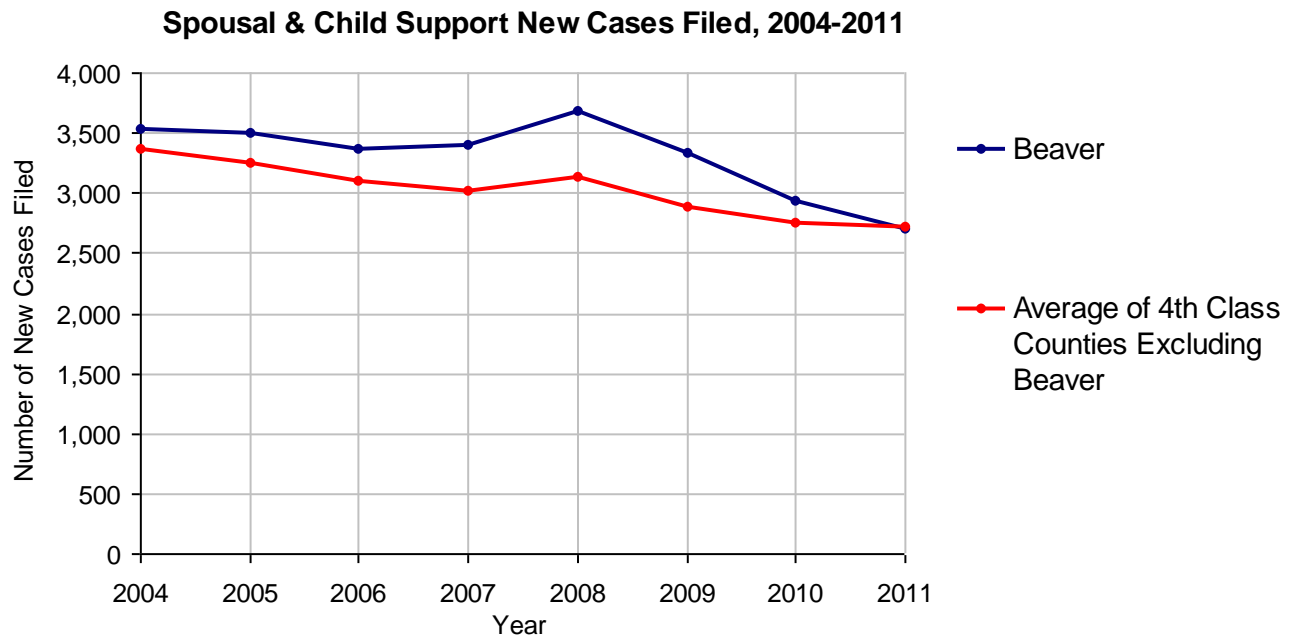


# Beaver County

2011 Population Estimate: 170,414  
 Class of County: 4th  
 No. of Common Pleas Court Judgeships: 7

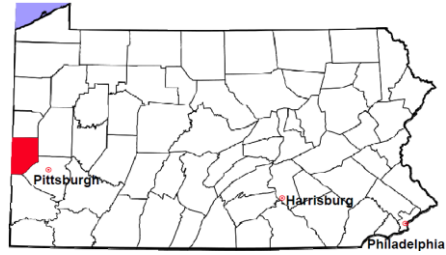


<b>2011 Spousal &amp; Child Support</b>	<b>No. of Petitions</b>	
Cases Pending 1/1/2011	410	
New Cases Filed in 2011	2,703	
Dockets Transferred In (+)	28	
Dockets Transferred Out (-)	23	
<b>Cases Available for Processing</b>	<b>3,118</b>	
Processed By:		
Judge	158	5.8%
Intake Officer	2,567	94.2%
Hearing Officer	0	
Other	1	<0.1%
<b>Cases Processed</b>	<b>2,726</b>	<b>100.0%</b>
<b>Cases Pending 12/31/2011</b>	<b>392</b>	



# Beaver County

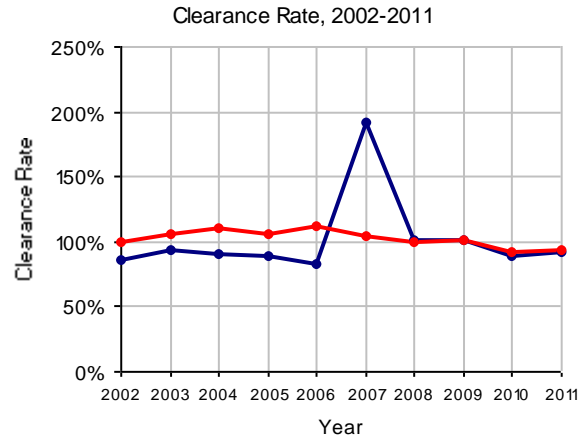
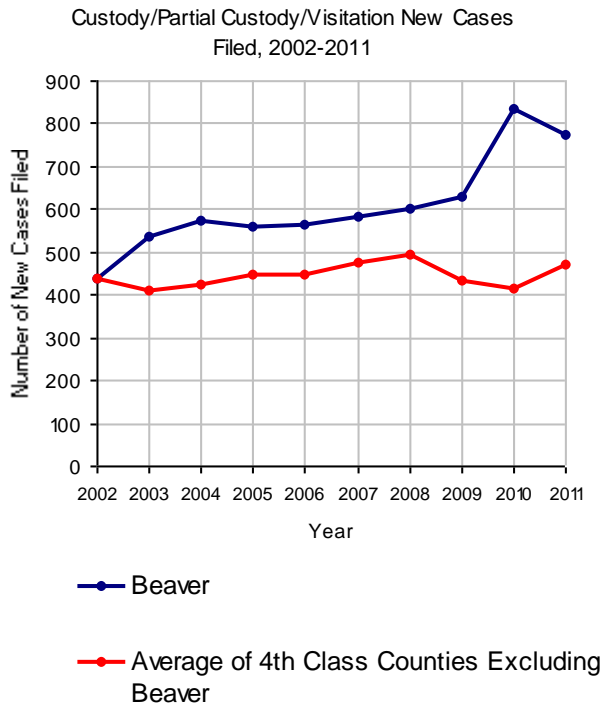
2011 Population Estimate: 170,414  
 Class of County: 4th  
 No. of Common Pleas Court Judgeships: 7



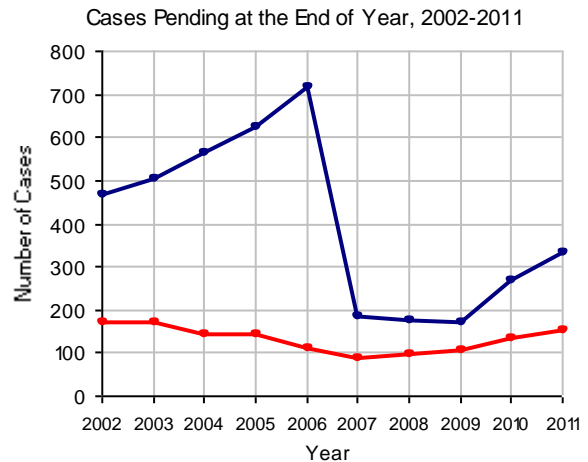
## 2011 Custody/Partial Custody/Visitation

No. of Petitions

Cases Pending 1/1/2011	266
New Cases Filed in 2011	775
<b>Cases Available for Processing</b>	<b>1,041</b>
Processed By:	
Judge	235 33.2%
Non-Judicial Officer	411 58.1%
Other	62 8.8%
<b>Cases Processed</b>	<b>708 100.0%</b>
<b>Cases Pending 12/31/2011</b>	<b>333</b>

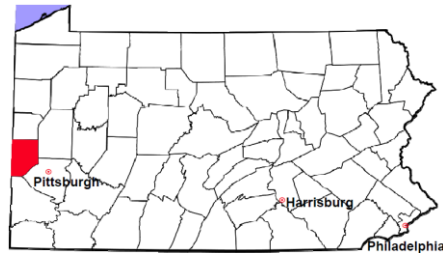


Note: Clearance Rate = Cases Processed / New Cases Filed



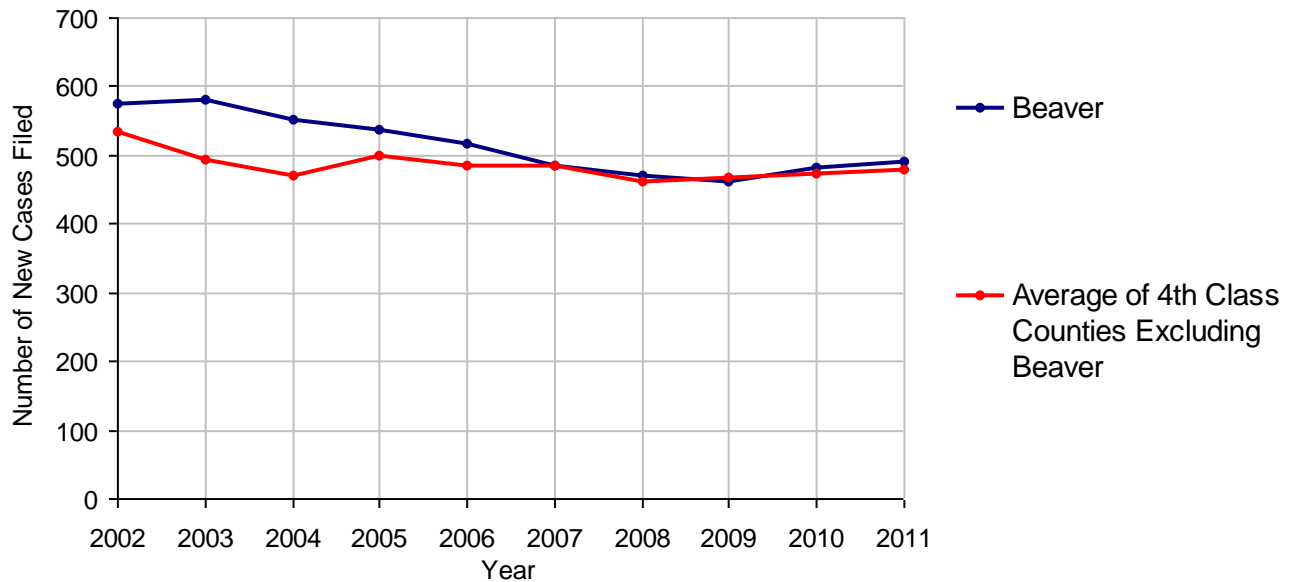
# Beaver County

2011 Population Estimate: 170,414  
 Class of County: 4th  
 No. of Common Pleas Court Judgeships: 7



<b>2011 Divorce</b>	<b>No. of Petitions</b>	
Cases Pending 1/1/2011	714	
New Cases Filed in 2011	490	
<b>Cases Available for Processing</b>	<b>1,204</b>	
Processed By:		
Contested Before a Judge	15	3.4%
Contested Before a Master	0	
Uncontested	404	91.8%
Other	21	4.8%
<b>Cases Processed</b>	<b>440</b>	<b>100.0%</b>
<b>Cases Pending 12/31/2011</b>	<b>764</b>	

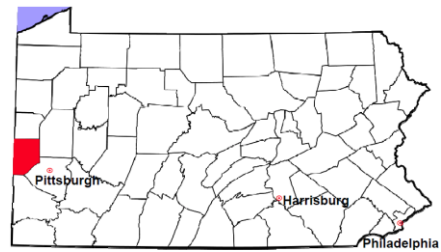
**Divorce New Cases Filed, 2002-2011**





# Beaver County

2011 Population Estimate: 170,414  
 Class of County: 4th  
 No. of Common Pleas Court Judgeships: 7



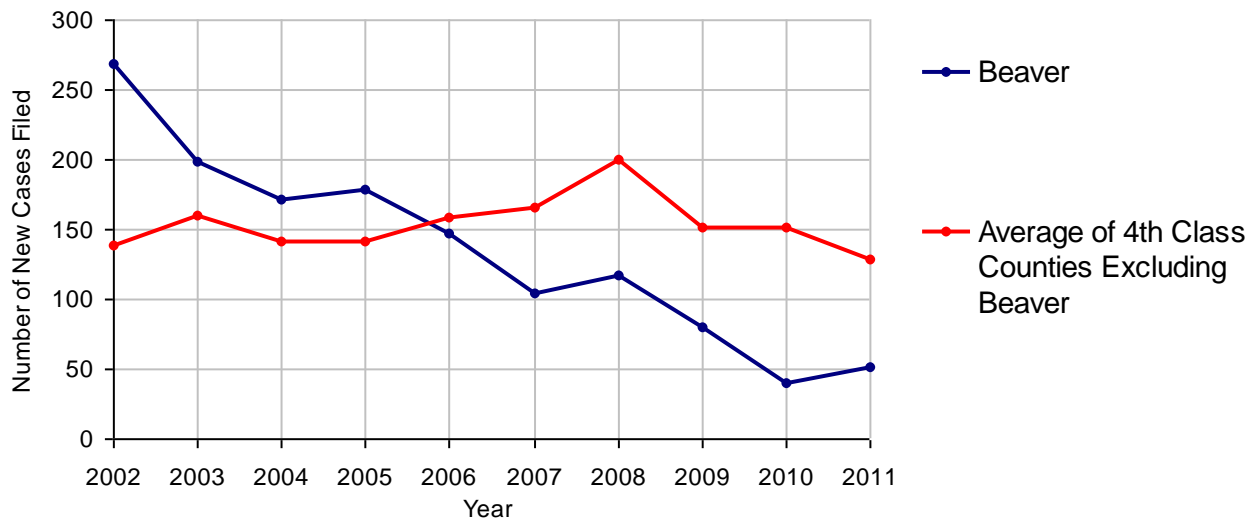
## 2011 Juvenile Dependency - Active Dependent Inventory



	Abuse/ Neglect	Status Offenses	Total
Cases Pending 1/1/2011	7	1	8
New Petitions Filed in 2011	44	8	52
Other	2	0	2
<b>Total Petitions Available for Processing</b>	<b>53</b>	<b>9</b>	<b>62</b>
Processed by:			
Adjudicated Dependent			
Judge	2	1	3
Master	26	5	31
Adjudicated NOT Dependent			
Judge	2	0	2
Master	0	0	0
Withdrawn/Dismissed/Inactive	8	2	10
Other	6	1	7
<b>Total Petitions Processed</b>	<b>44</b>	<b>9</b>	<b>53</b>
<b>Cases Pending 12/31/2011</b>	<b>9</b>	<b>0</b>	<b>9</b>

Data provided by CPCMS

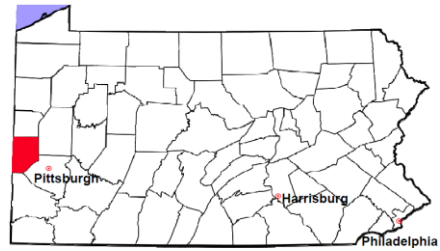
**Abuse/Neglect and Status Offenses New Cases Filed, 2002-2011**



Note: Dependency data for 2002-2010 were collected manually. Dependency data for 2011 were provided by CPCMS.

# Beaver County

2011 Population Estimate: 170,414  
 Class of County: 4th  
 No. of Common Pleas Court Judgeships: 7



## 2011 Juvenile Dependency - Adjudicated Dependent Inventory

	Abuse/ Neglect	Status Offenses	Total	
Cases Pending 1/1/2011	48	8	56	
New Adjudicated Dependent Cases	28	6	34	
Other	8	0	8	
<b>Total Adjudicated Dependent Cases</b>	<b>84</b>	<b>14</b>	<b>98</b>	
<b><u>Court Supervision Terminated:</u></b>				
Family Reunification	7	4	11	29.7%
Adoption	2	0	2	5.4%
Placement with a Relative/Guardian	1	0	1	2.7%
Aged Out	5	3	8	21.6%
Other Permanency Outcomes*	2	1	3	8.1%
Other**	10	2	12	32.4%
<b>Total Adjudicated Dependent Cases Terminated</b>	<b>27</b>	<b>10</b>	<b>37</b>	<b>100.0%</b>
<b>Cases Pending 12/31/2011</b>	<b>57</b>	<b>4</b>	<b>61</b>	

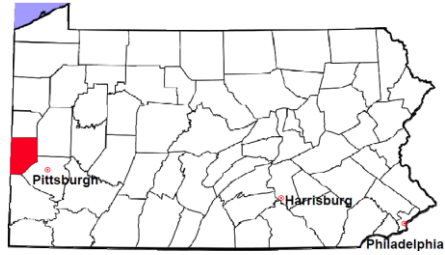
Data provided by CPCMS

\* Other Permanency Outcomes include: adjudicated delinquent, death due to natural causes, emancipation, permanent living arrangement, and parent has come forward.

\*\* Other includes cases where Court Supervision is terminated due to transfer out of jurisdiction, withdrawal and administrative closures.

# Beaver County

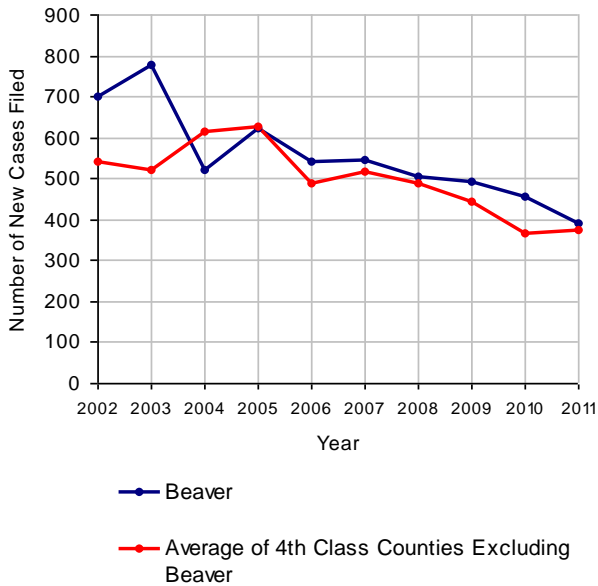
2011 Population Estimate: 170,414  
 Class of County: 4th  
 No. of Common Pleas Court Judgeships: 7



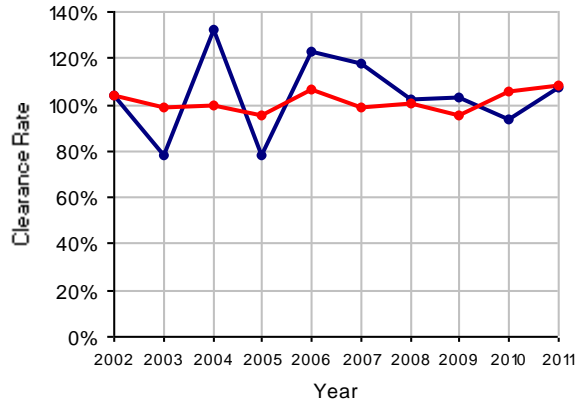
## 2011 Juvenile Delinquency

	No. of Cases
Cases Pending 1/1/2011	61
New Cases Filed in 2011	392
<b>Cases Available for Processing</b>	<b>453</b>
Processed By:	
Judge	30 7.1%
<b>Non-Judicial Officer</b>	<b>310 73.8%</b>
Other	80 19.0%
<b>Cases Processed</b>	<b>420 100.0%</b>
<b>Cases Pending 12/31/2011</b>	<b>33</b>

Juvenile Delinquency New Cases Filed, 2002-2011

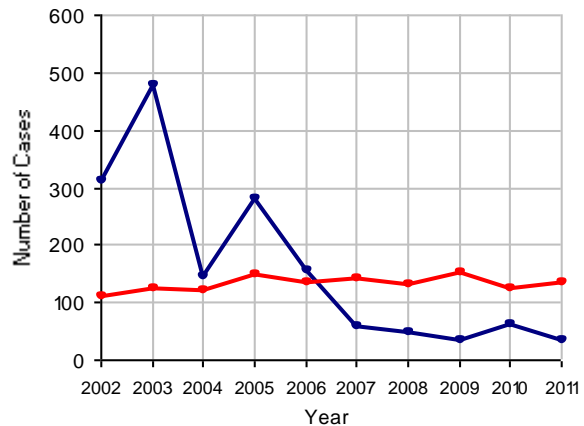


Clearance Rate, 2002-2011



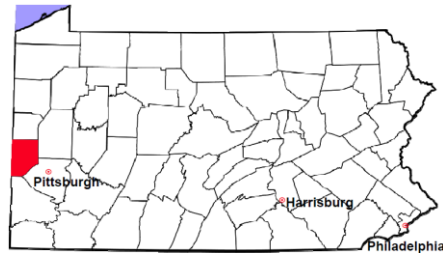
Note: Clearance Rate = Cases Processed / New Cases Filed

Cases Pending at the End of Year, 2002-2011



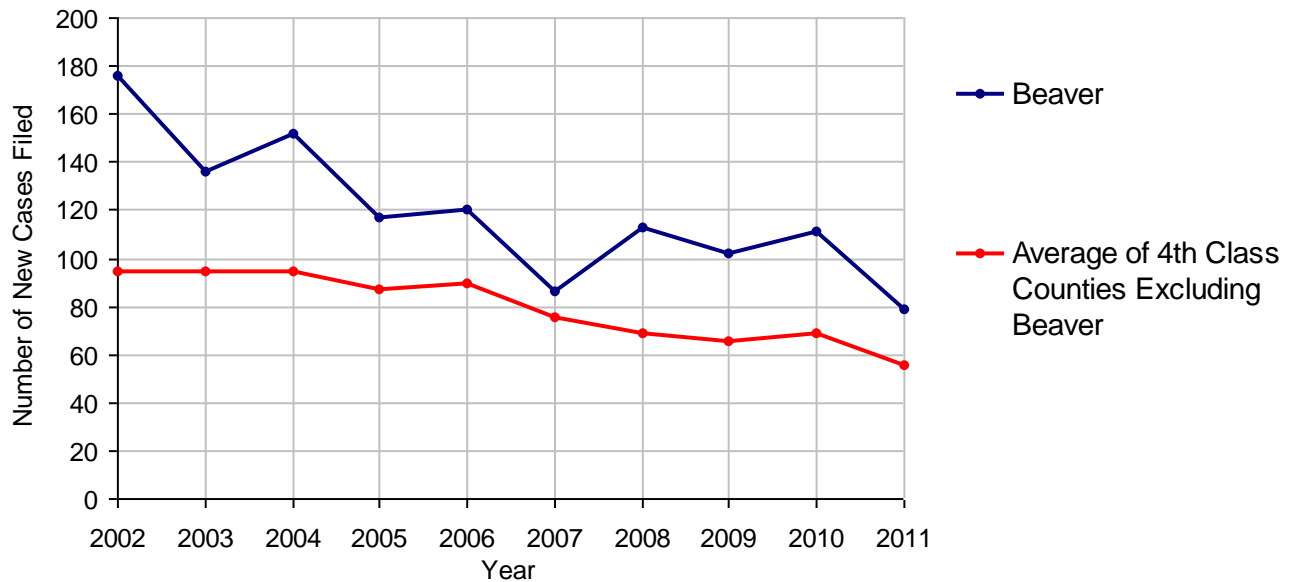
# Beaver County

2011 Population Estimate: 170,414  
 Class of County: 4th  
 No. of Common Pleas Court Judgeships: 7



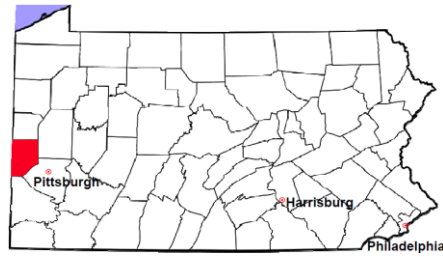
<b>2011 Accounts</b>	<b>No. of Cases</b>
Cases Pending 1/1/2011	11
New Cases Filed in 2011	79
<b>Cases Available for Processing</b>	<b>90</b>
Processed By:	
Contested before a Judge	1    1.3%
Contested before a Non-judicial Officer	1    1.3%
Uncontested	73    96.1%
Other	1    1.3%
<b>Cases Processed</b>	<b>76    100.0%</b>
<b>Cases Pending 12/31/2011</b>	<b>14</b>

**Accounts New Cases Filed, 2002-2011**



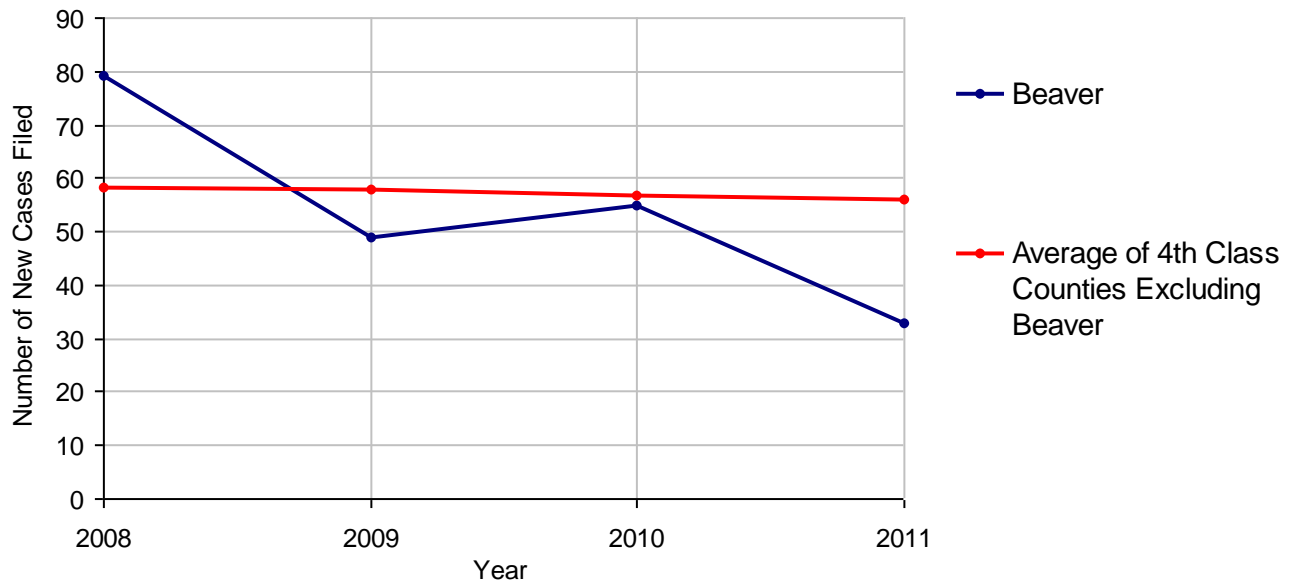
# Beaver County

2011 Population Estimate: 170,414  
 Class of County: 4th  
 No. of Common Pleas Court Judgeships: 7



2011 Adoptions		No. of Cases	
Cases Pending 1/1/2011		6	
New Cases Filed in 2011		33	
<b>Cases Available for Processing</b>		<b>39</b>	
Processed By:			
Contested before a Judge	Granted	0	
	Denied	0	
Uncontested	Granted	35	97.2%
	Denied	0	
Other		1	2.8%
<b>Cases Processed</b>		<b>36</b>	<b>100.0%</b>
<b>Cases Pending 12/31/2011</b>		<b>3</b>	

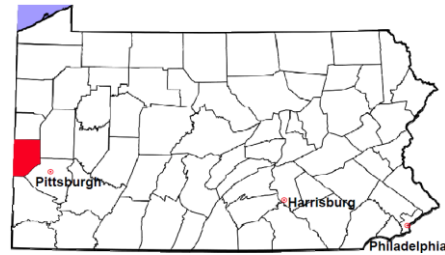
Adoptions New Cases Filed, 2008-2011



Note: Prior to 2008, each petition was counted as one new case, regardless of the number of children listed on the petition. Starting in 2008, each child listed on a petition is counted as a separate case. Therefore, statistics for the years since 2008 should not be compared to those for the years prior to 2008.

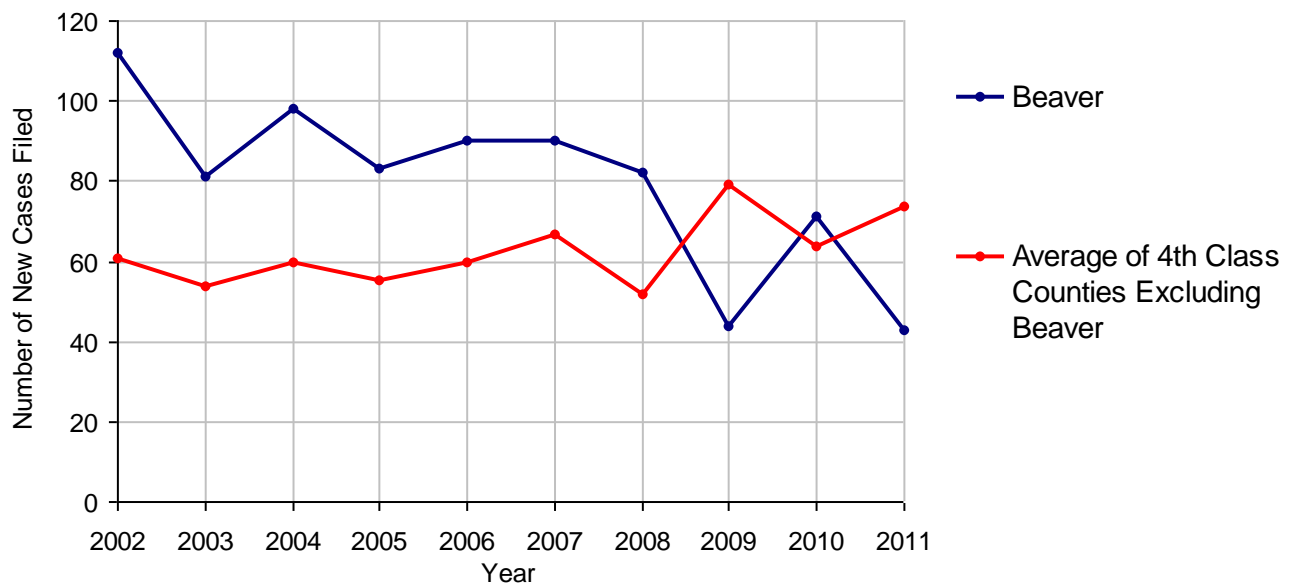
# Beaver County

2011 Population Estimate: 170,414  
 Class of County: 4th  
 No. of Common Pleas Court Judgeships: 7



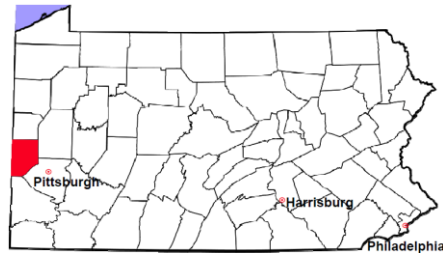
2011 Relinquishments/Terminations		No. of Cases
Cases Pending 1/1/2011		12
New Cases Filed in 2011		43
<b>Cases Available for Processing</b>		<b>55</b>
Processed By:		
Contested before a Judge	24	51.1%
Uncontested	16	34.0%
Other	7	14.9%
<b>Cases Processed</b>	<b>47</b>	<b>100.0%</b>
<b>Cases Pending 12/31/2011</b>		<b>8</b>

Relinquishments/Terminations New Cases Filed, 2002-2011



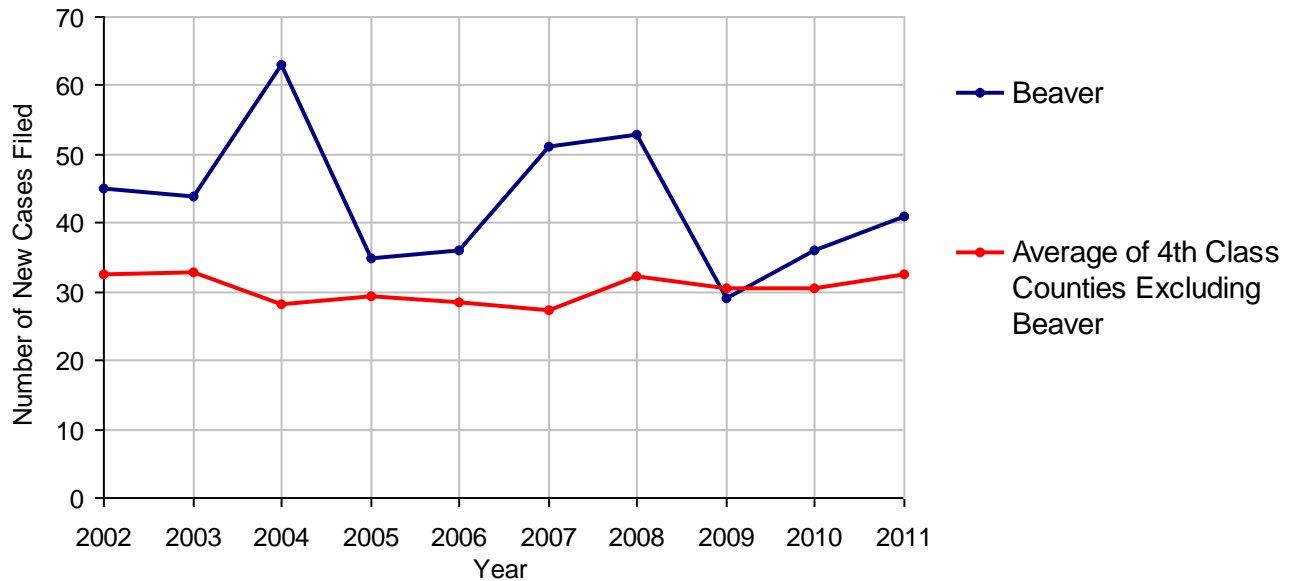
# Beaver County

2011 Population Estimate: 170,414  
 Class of County: 4th  
 No. of Common Pleas Court Judgeships: 7



<b>2011 Appointment of Guardians</b>		<b>No. of Cases</b>
Cases Pending 1/1/2011		10
New Cases Filed in 2011		41
<b>Cases Available for Processing</b>		<b>51</b>
Processed By:		
Contested before a Judge	8	19.0%
Uncontested	23	54.8%
Other	11	26.2%
<b>Cases Processed</b>	<b>42</b>	<b>100.0%</b>
<b>Cases Pending 12/31/2011</b>		<b>9</b>

**Appointment of Guardians New Cases Filed, 2002-2011**

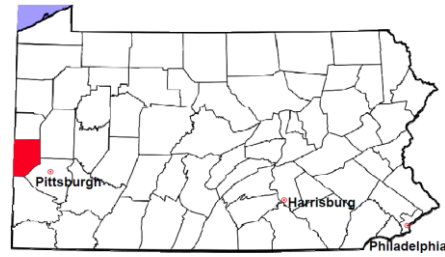


# Beaver County

2011 Population Estimate: 170,414

Class of County: 4th

No. of Common Pleas Court Judgeships: 7



---

## 2011 Jury Activity and Performance Measures

---

A. Juror Days	2,887	
B. Number Sent to Voir Dire	3,727	
Voir Dire Attendance Rate (B/A * 100)		129.1%
C. Number of Jurors Selected	598	
Juror Selection Rate (C/B * 100)		16.0%

---

Note: In mid-2011, AOPC began utilizing the National Center for State Courts' Jury Managers' Toolbox for collecting jury data. This has resulted in limited jury performance measures being reported for 2011. Additional data will be available in 2012.