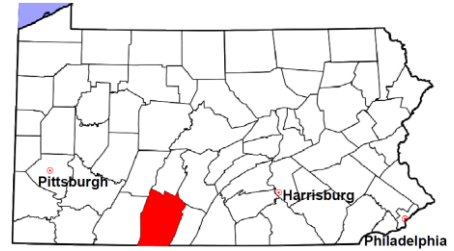


Bedford County

2011 Population Estimate: 49,739

Class of County: 6th

No. of Common Pleas Court Judgeships: 2



2011 Criminal	No. of Cases
---------------	--------------

Cases Pending 1/1/2011	179
New Cases Filed in 2011	467
Reopened Cases	9
Cases Available for Disposition	655

Disposed by:

Withdrawn/Dismissed	15	3.4%
ARD	74	16.7%
Guilty Plea	322	72.9%
Non-Jury Trial	6	1.4%
Jury Trial	7	1.6%
Inactive	5	1.1%
Other	13	2.9%
Total Cases Disposed	442	100.0%

Cases Pending 12/31/2011 **213**

Cases Awaiting Sentencing 37

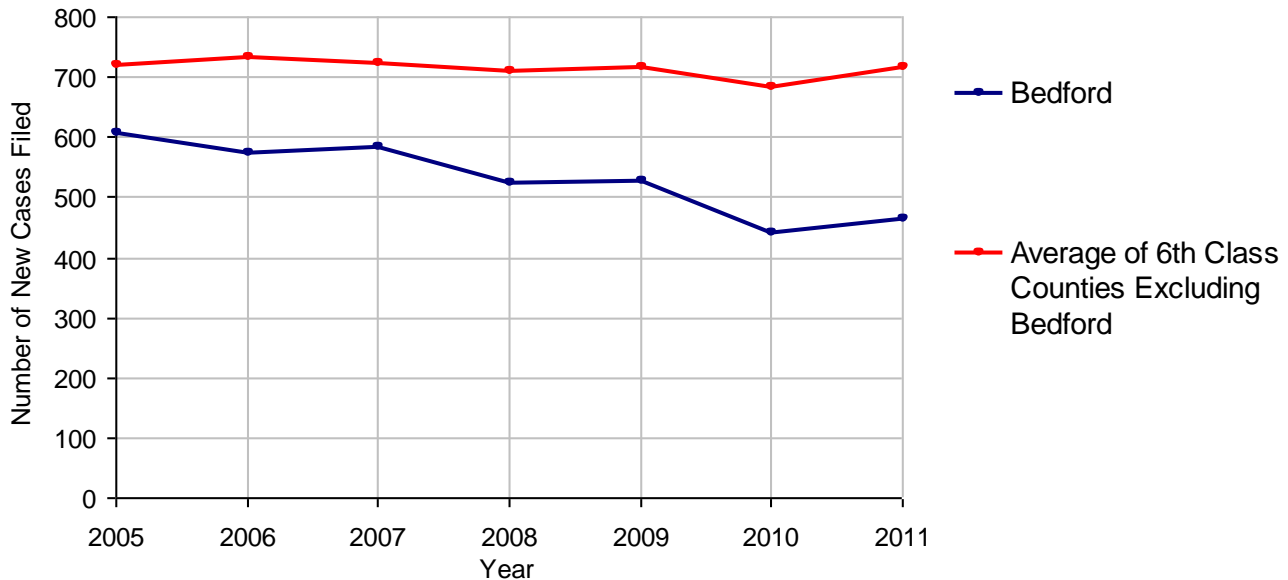
Data provided by CPCMS



Age of Pending Cases as of 12/31/2011

0-60 Days	86	40.4%
61-120 Days	69	32.4%
121-180 Days	24	11.3%
181-240 Days	10	4.7%
241-300 Days	4	1.9%
301-360 Days	5	2.3%
Over 360 Days	15	7.0%
Total	213	100.0%

Criminal New Cases Filed, 2005-2011

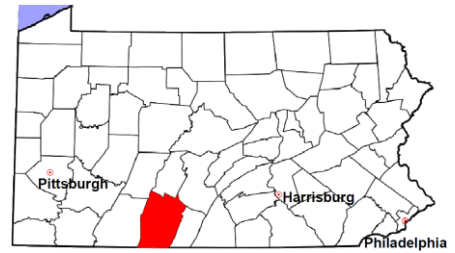


Bedford County

2011 Population Estimate: 49,739

Class of County: 6th

No. of Common Pleas Court Judgeships: 2



2011 Criminal - New Cases by Case Type



Case Type	Felony	Misdemeanor	Summary /Ungraded	Total
Person	39	29	0	68
Property	77	70	0	147
Drug	57	24	0	81
Weapon	5	2	0	7
Public Order	10	29	1	40
Motor Vehicle - DWI/DUI	0	122	0	122
Motor Vehicle - Other	0	2	0	2
Other	0	0	0	0
Total	188	278	1	467
	40.3%	59.5%	0.2%	100.0%

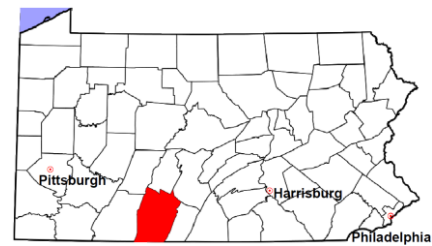
Data provided by CPCMS

Bedford County

2011 Population Estimate: 49,739

Class of County: 6th

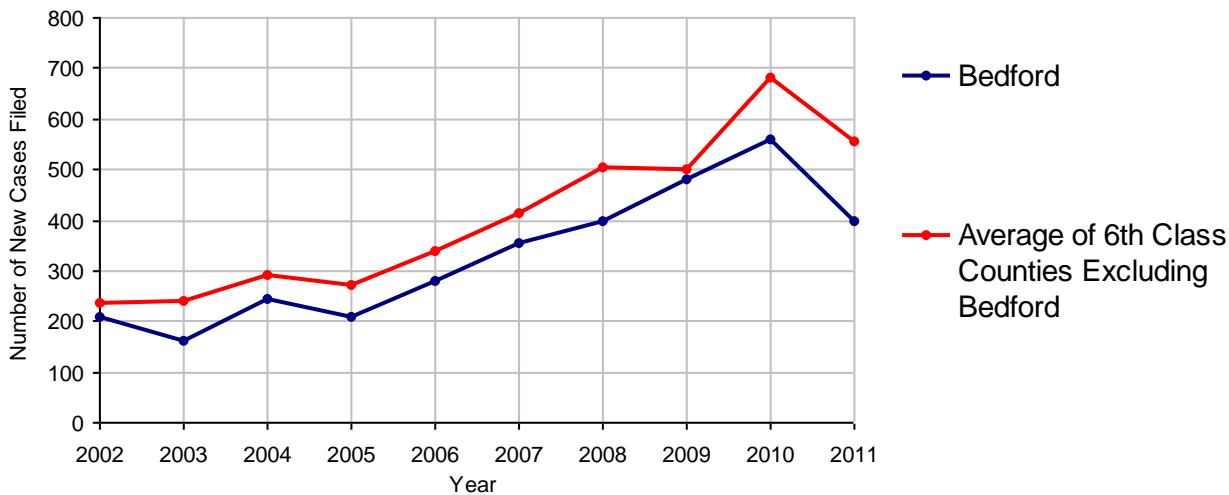
No. of Common Pleas Court Judgeships: 2



2011 Civil	Civil Action	Other	Total
Cases Pending 1/1/2011	366	330	696
Docketed Cases	276	124	400
Arbitration Appeals	1	0	1
Transferred In	2	0	2
Returned to Active	0	0	0
Cases Available for Processing	645	454	1,099
Disposed By:			
Default Judgments	118	41	159
Cases Decided by Arbitration Board	11	0	11
Dispositive Motions	12	13	25
Settlements	22	8	30
Moved to Inactive Status	0	0	0
Transferred/Withdrawn	4	1	5
Pa.R.J.A. 1901 Administrative Purge	41	72	113
Other	122	42	164
Jury Trial	0	0	0
Non-Jury Trial	2	2	4
Total Cases Disposed	332	179	511
Cases Pending 12/31/2011	313	275	588

Age of Pending Cases as of 12/31/2011 (Civil Action Only)		
0-6 months	103	32.9%
7-12 months	53	16.9%
13-18 months	67	21.4%
19-24 months	31	9.9%
25-30 months	27	8.6%
31-36 months	13	4.2%
37-42 months	4	1.3%
43-48 months	6	1.9%
49-54 months	4	1.3%
55-60 months	2	0.6%
61-66 months	1	0.3%
67-72 months	0	
Over 72 months	2	0.6%
Total	313	100.0%

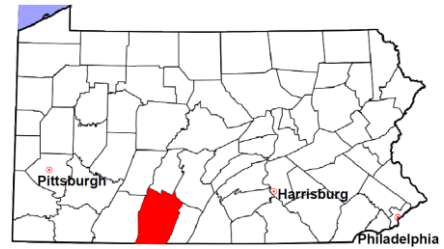
Docketed Cases, 2002-2011



Note: Prior to June 2010, docketed cases under the "Other" category were not reported. The reporting of these cases starting from June 2010 may contribute to an increase in docketed cases from 2009 to 2010.

Bedford County

2011 Population Estimate: 49,739
 Class of County: 6th
 No. of Common Pleas Court Judgeships: 2



2011 Civil - Docketed Cases Listed by Case Type

TORT (does not include mass tort)

Intentional	2
Malicious Prosecution	0
Motor Vehicle	23
Nuisance	0
Premise Liability	4
Product Liability	0
Slander/Libel/Defamation	0
Other	7

MASS TORT

Asbestos	0
Tobacco	0
Toxic Tort - DES	0
Toxic Tort - Implant	0
Toxic Waste	0
Other	0

PROFESSIONAL LIABILITY

Dental	0
Legal	2
Medical Malpractice	4
Other	0

CONTRACT

(does not include judgments)

Buyer Plaintiff	2
Debt Collection:	
Credit Card	171
Debt Collection: Other	51
Employment Dispute:	
Discrimination	0
Employment Dispute: Other	0
Other	8

REAL PROPERTY

Ejectment*	7
Eminent Domain/ Condemnation*	7
Ground Rent	0
Landlord/Tenant Dispute	2
Mortgage Forclosures:	
Residential*	55
Commercial*	3
Partition of Real Property*	3
Quiet Title*	2
Other*	3

CIVIL APPEALS

Administrative Agencies

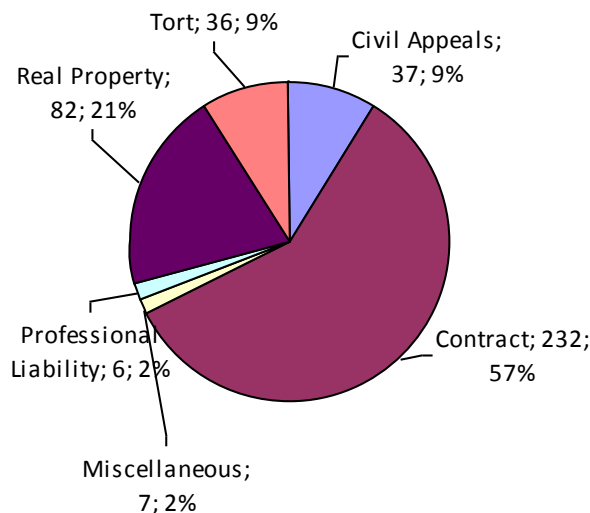
Board of Assessment*	9
Board of Elections*	0
Dept. of Transportation*	19
Zoning Board*	0
Statutory Appeal - Other*	1
Other*	8

MISCELLANEOUS

Common Law/ Statutory Arbitration*	0
Declaratory Judgment*	2
Mandamus*	0
Non-Domestic Relations Restraining Order*	0
Quo Warranto*	0
Replevin*	2
Other*	3

TOTAL DOCKETED CASES: 400

* Civil Other



Of the Docketed Cases:

Pro Se Filings:	18	4.5%
Class Action Suits:	0	
MDJ Appeals:	27	6.8%

Bedford County

2011 Population Estimate: 49,739

Class of County: 6th

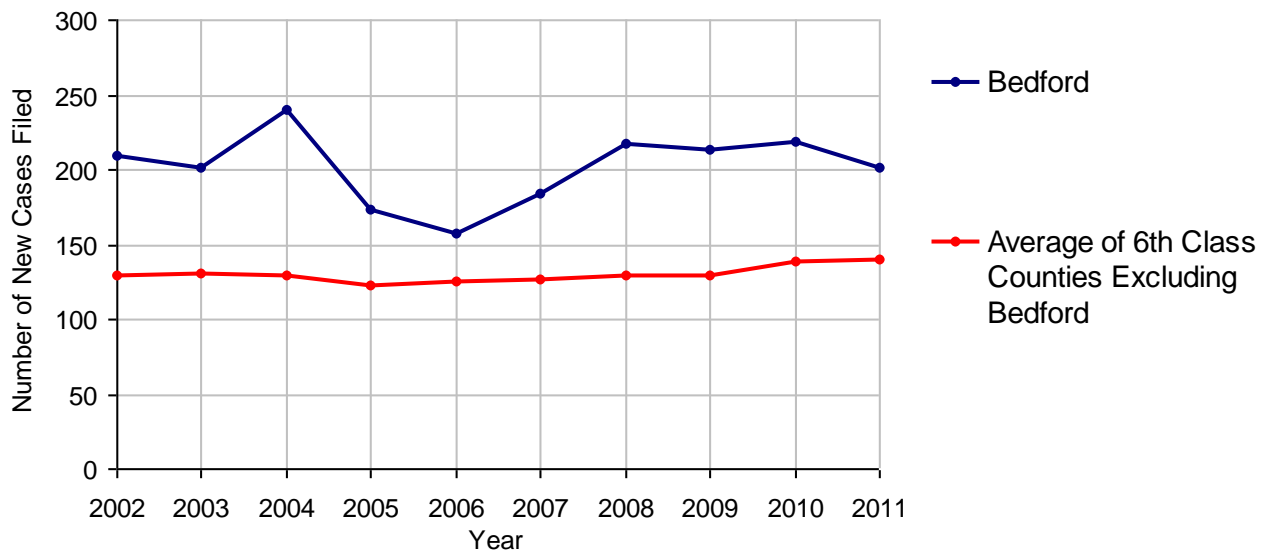
No. of Common Pleas Court Judgeships: 2



2011 Protection From Abuse

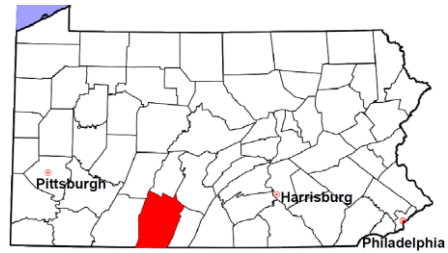
	No. of Petitions
Cases Pending 1/1/2011	11
New Cases Filed in 2011	201
<i>Of these, Petitions Requesting Temporary Orders: 194 (96.5%)</i>	
<i>Temporary Orders DENIED: 18 (9.3%), Temporary Orders GRANTED: 176 (90.7%)</i>	
Cases Available for Processing	212
Processed By:	
Temporary Order DENIED After Ex Parte Hearing and No Evidentiary Hearing Scheduled	3 1.4%
Temporary Order DISMISSED After Evidentiary Hearing and No Final Order Entered	14 6.7%
Final Order DENIED After Evidentiary Hearing Before a Judge	2 1.0%
Final Order GRANTED After Evidentiary Hearing Before a Judge	17 8.2%
Plaintiff Did Not Appear For Evidentiary Hearing	11 5.3%
Final Order by STIPULATION OR AGREEMENT Between the Parties	108 51.9%
Petition WITHDRAWN by Plaintiff	52 25.0%
TRANSFERRED to Another Jurisdiction	0
DECEASED Party	0
Other	1 0.5%
Cases Processed	208 100.0%
Cases Pending 12/31/2011	4

PFA New Cases Filed, 2002-2011

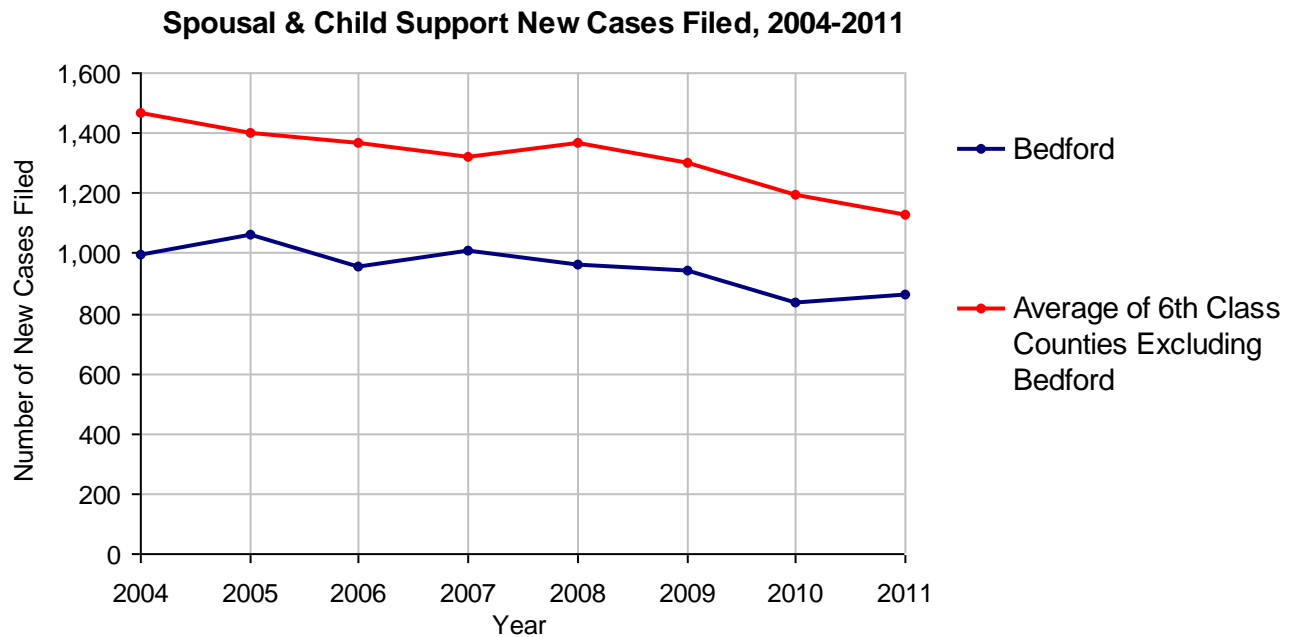


Bedford County

2011 Population Estimate: 49,739
 Class of County: 6th
 No. of Common Pleas Court Judgeships: 2



2011 Spousal & Child Support	No. of Petitions	
Cases Pending 1/1/2011	205	
New Cases Filed in 2011	862	
Dockets Transferred In (+)	42	
Dockets Transferred Out (-)	8	
Cases Available for Processing	1,101	
Processed By:		
Judge	120	13.1%
Intake Officer	797	86.7%
Hearing Officer	0	
Other	2	0.2%
Cases Processed	919	100.0%
Cases Pending 12/31/2011	182	

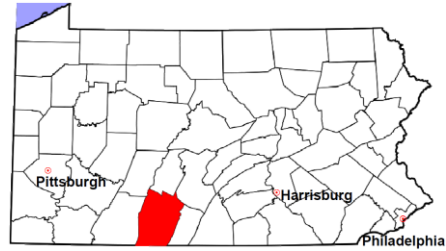


Bedford County

2011 Population Estimate: 49,739

Class of County: 6th

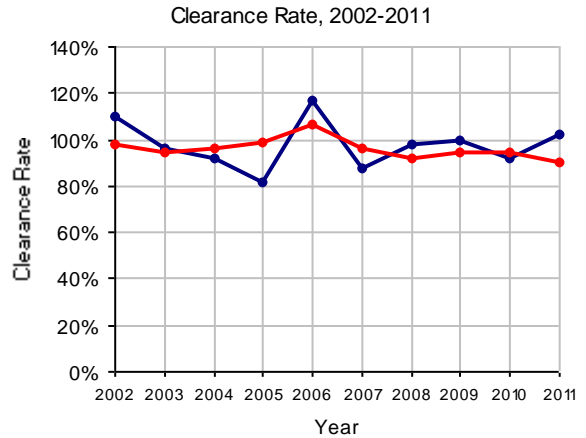
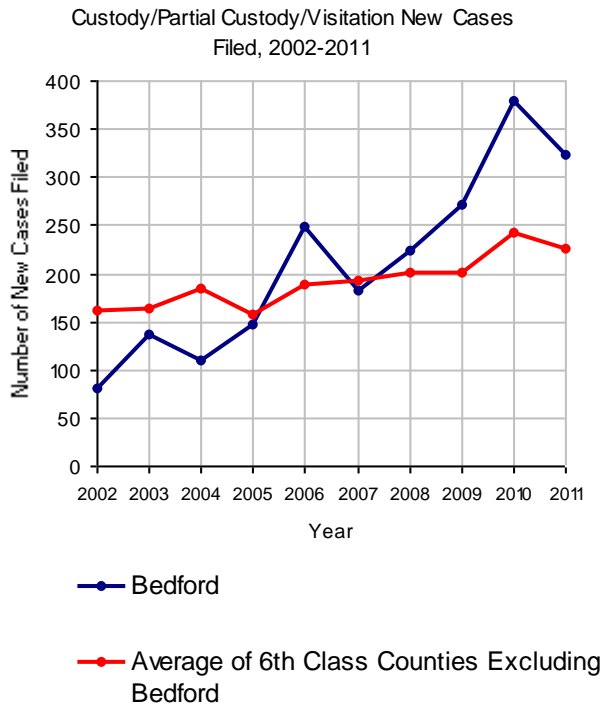
No. of Common Pleas Court Judgeships: 2



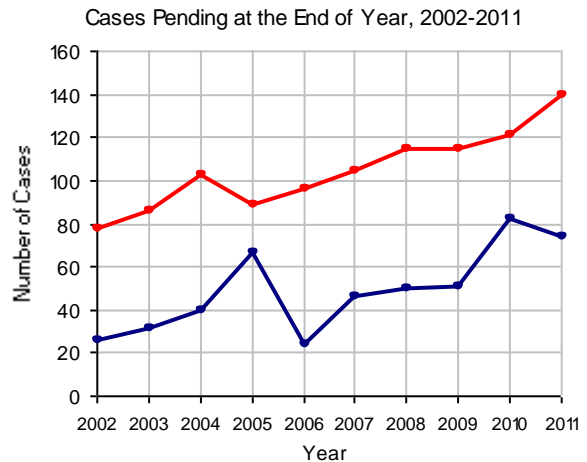
2011 Custody/Partial Custody/Visitation

No. of
Petitions

Cases Pending 1/1/2011	82	
New Cases Filed in 2011	324	
Cases Available for Processing	406	
Processed By:		
Judge	326	98.2%
Non-Judicial Officer	0	
Other	6	1.8%
Cases Processed	332	100.0%
Cases Pending 12/31/2011	74	

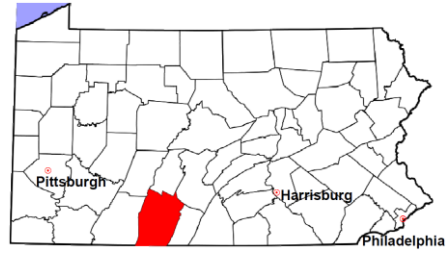


Note: Clearance Rate = Cases Processed / New Cases Filed



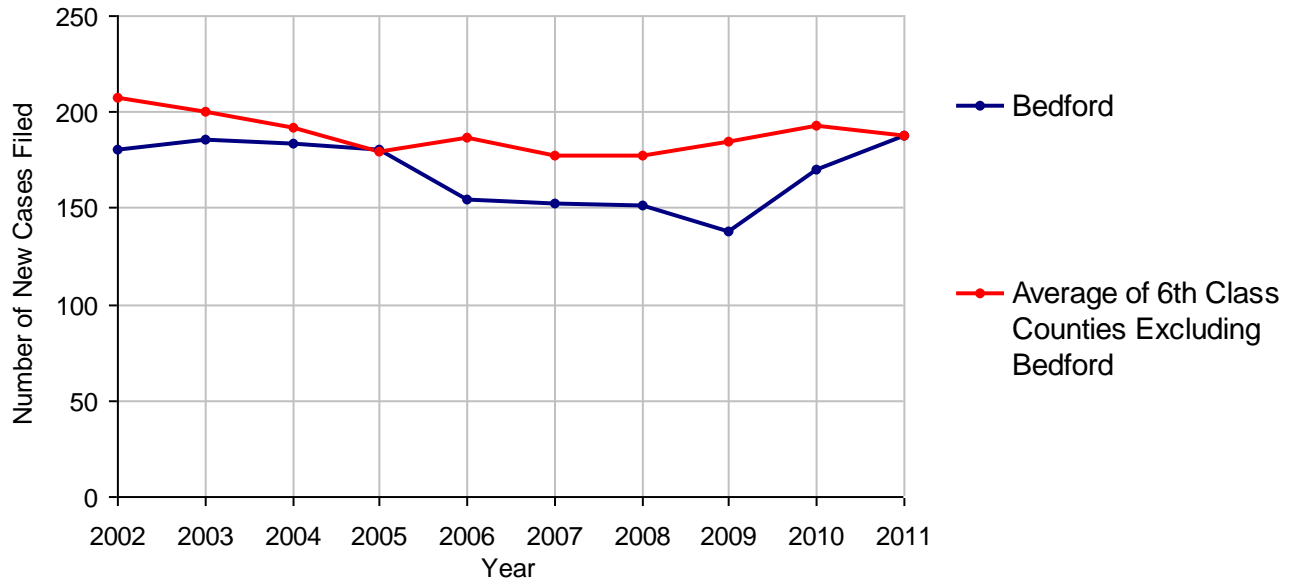
Bedford County

2011 Population Estimate: 49,739
 Class of County: 6th
 No. of Common Pleas Court Judgeships: 2



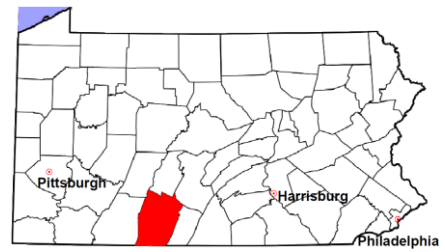
2011 Divorce	No. of Petitions	
Cases Pending 1/1/2011	314	
New Cases Filed in 2011	188	
Cases Available for Processing	502	
Processed By:		
Contested Before a Judge	2	1.0%
Contested Before a Master	0	
Uncontested	128	62.1%
Other	76	36.9%
Cases Processed	206	100.0%
Cases Pending 12/31/2011	296	

Divorce New Cases Filed, 2002-2011



Bedford County

2011 Population Estimate: 49,739
 Class of County: 6th
 No. of Common Pleas Court Judgeships: 2



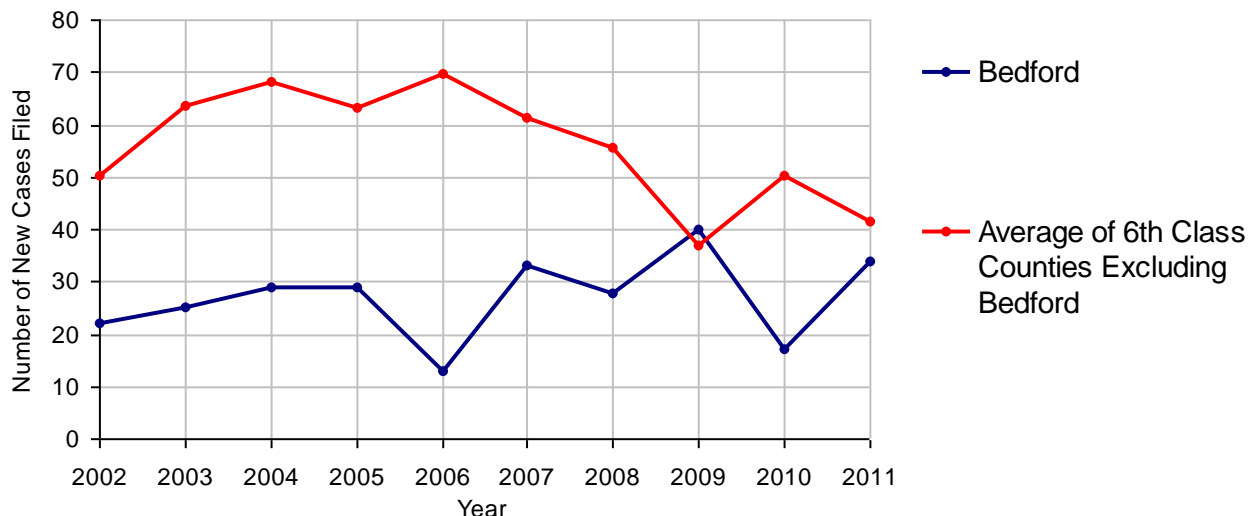
2011 Juvenile Dependency - Active Dependent Inventory



	Abuse/ Neglect	Status Offenses	Total
Cases Pending 1/1/2011	0	0	0
New Petitions Filed in 2011	34	0	34
Other	1	0	1
Total Petitions Available for Processing	35	0	35
Processed by:			
Adjudicated Dependent			
Judge	25	0	25
Master	0	0	0
Adjudicated NOT Dependent			
Judge	0	0	0
Master	0	0	0
Withdrawn/Dismissed/Inactive	1	0	1
Other	4	0	4
Total Petitions Processed	30	0	30
Cases Pending 12/31/2011	5	0	5

Data provided by CPCMS

Abuse/Neglect and Status Offenses New Cases Filed, 2002-2011



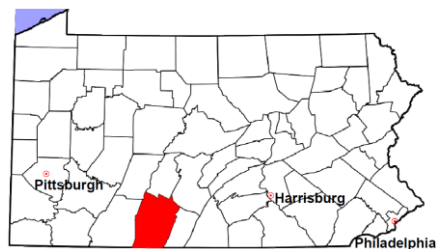
Note: Dependency data for 2002-2010 were collected manually. Dependency data for 2011 were provided by CPCMS.

Bedford County

2011 Population Estimate: 49,739

Class of County: 6th

No. of Common Pleas Court Judgeships: 2



2011 Juvenile Dependency - Adjudicated Dependent Inventory



	Abuse/ Neglect	Status Offenses	Total	
Cases Pending 1/1/2011	49	1	50	
New Adjudicated Dependent Cases	25	0	25	
Other	1	0	1	
Total Adjudicated Dependent Cases	75	1	76	
<u>Court Supervision Terminated:</u>				
Family Reunification	10	0	10	23.3%
Adoption	11	0	11	25.6%
Placement with a Relative/Guardian	16	0	16	37.2%
Aged Out	5	0	5	11.6%
Other Permanency Outcomes*	0	0	0	
Other**	1	0	1	2.3%
Total Adjudicated Dependent Cases Terminated	43	0	43	100.0%
Cases Pending 12/31/2011	32	1	33	

Data provided by CPCMS

* Other Permanency Outcomes include: adjudicated delinquent, death due to natural causes, emancipation, permanent living arrangement, and parent has come forward.

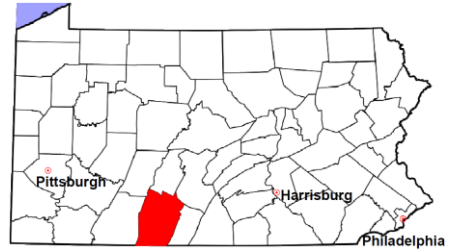
** Other includes cases where Court Supervision is terminated due to transfer out of jurisdiction, withdrawal and administrative closures.

Bedford County

2011 Population Estimate: 49,739

Class of County: 6th

No. of Common Pleas Court Judgeships: 2

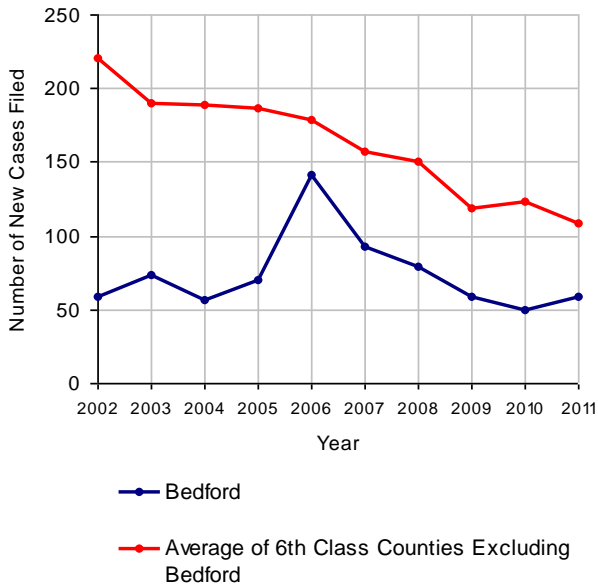


2011 Juvenile Delinquency

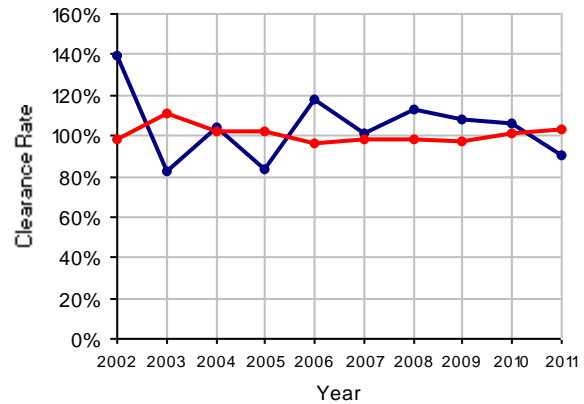
No. of Cases

Cases Pending 1/1/2011	9
New Cases Filed in 2011	59
Cases Available for Processing	68
Processed By:	
Judge	37 69.8%
Non-Judicial Officer	13 24.5%
Other	3 5.7%
Cases Processed	53 100.0%
Cases Pending 12/31/2011	15

Juvenile Delinquency New Cases Filed, 2002-2011

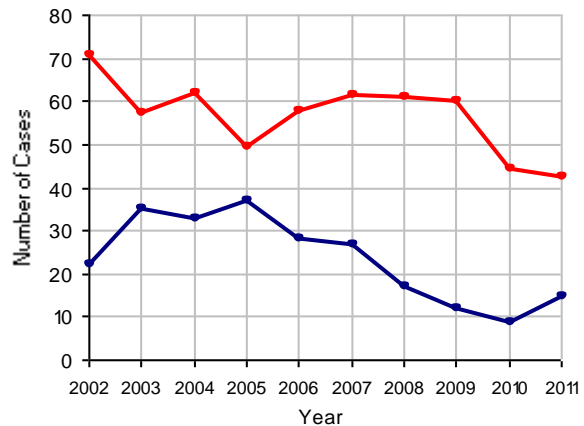


Clearance Rate, 2002-2011



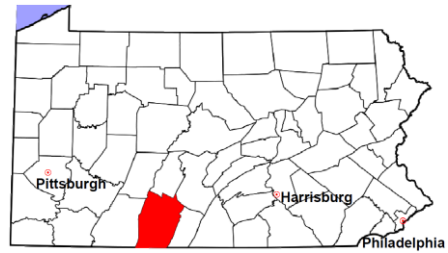
Note: Clearance Rate = Cases Processed / New Cases Filed

Cases Pending at the End of Year, 2002-2011



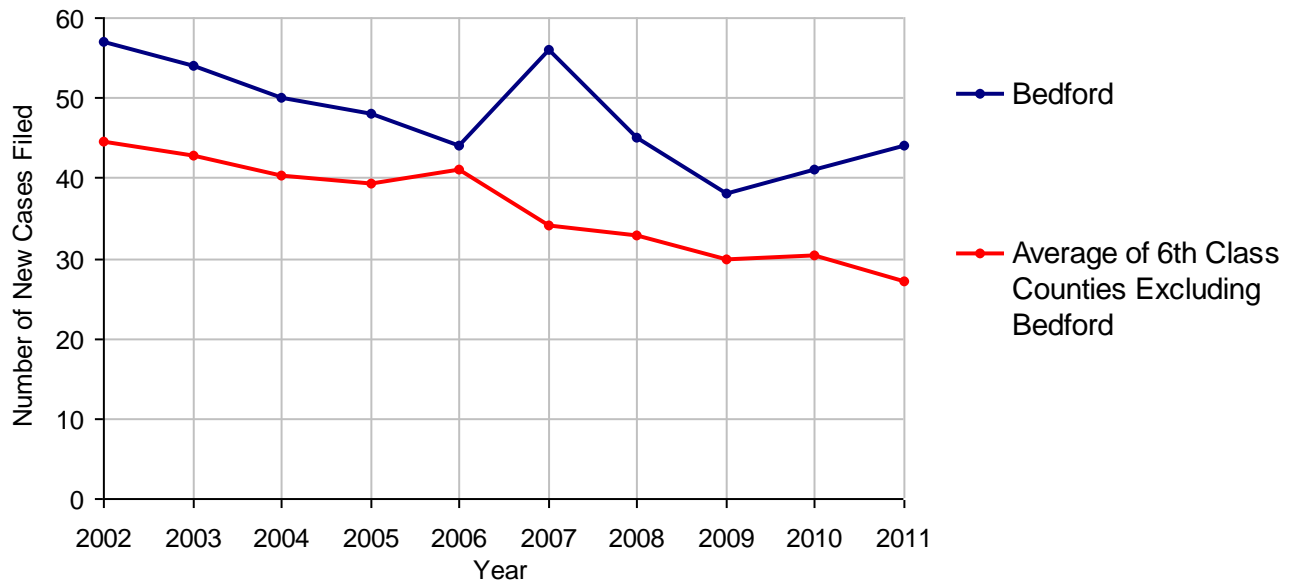
Bedford County

2011 Population Estimate: 49,739
 Class of County: 6th
 No. of Common Pleas Court Judgeships: 2



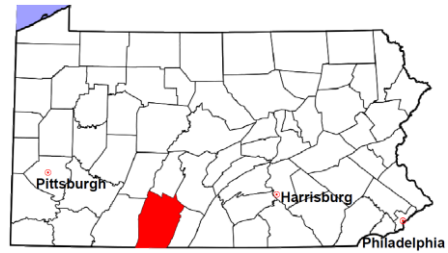
2011 Accounts	No. of Cases	
Cases Pending 1/1/2011	14	
New Cases Filed in 2011	44	
Cases Available for Processing	58	
Processed By:		
Contested before a Judge	2	3.9%
Contested before a Non-judicial Officer	0	
Uncontested	49	96.1%
Other	0	
Cases Processed	51	100.0%
Cases Pending 12/31/2011	7	

Accounts New Cases Filed, 2002-2011



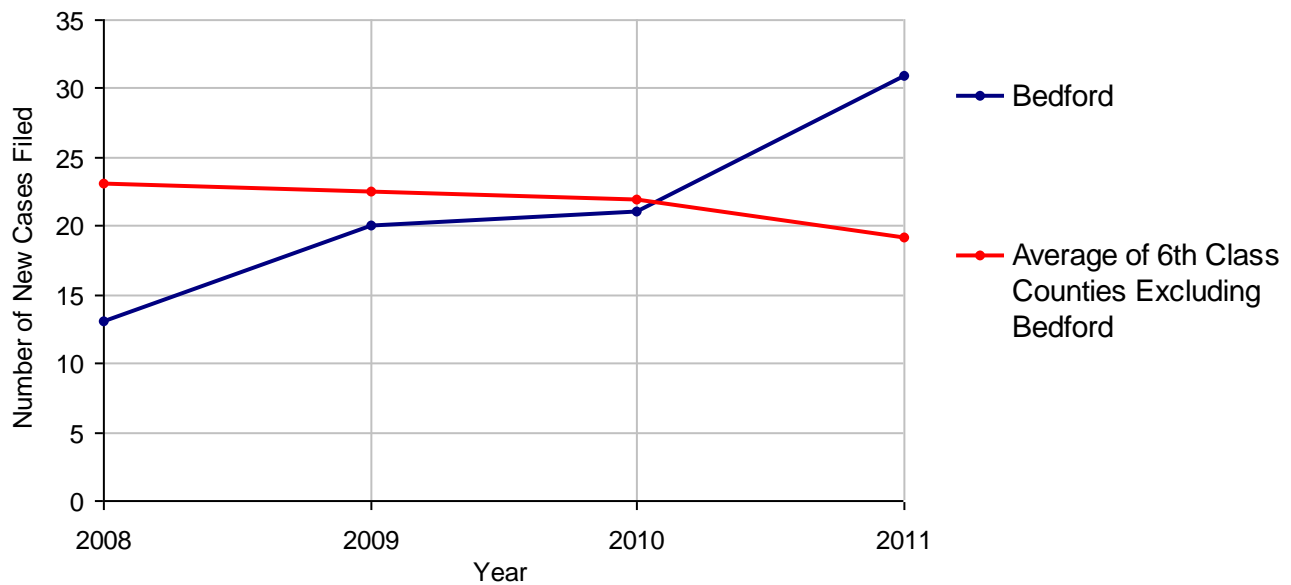
Bedford County

2011 Population Estimate: 49,739
 Class of County: 6th
 No. of Common Pleas Court Judgeships: 2



2011 Adoptions		No. of Cases	
Cases Pending 1/1/2011		8	
New Cases Filed in 2011		31	
Cases Available for Processing		39	
Processed By:			
Contested before a Judge	Granted	2	5.7%
	Denied	0	
Uncontested	Granted	30	85.7%
	Denied	0	
Other		3	8.6%
Cases Processed		35	100.0%
Cases Pending 12/31/2011		4	

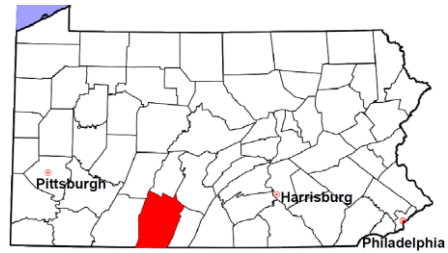
Adoptions New Cases Filed, 2008-2011



Note: Prior to 2008, each petition was counted as one new case, regardless of the number of children listed on the petition. Starting in 2008, each child listed on a petition is counted as a separate case. Therefore, statistics for the years since 2008 should not be compared to those for the years prior to 2008.

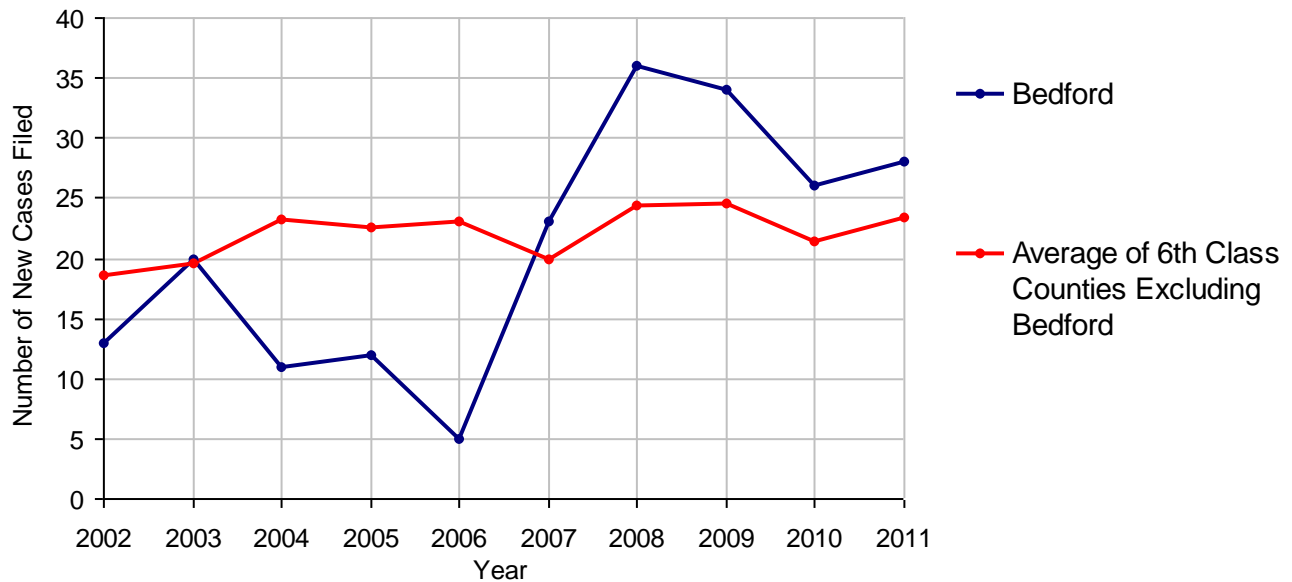
Bedford County

2011 Population Estimate: 49,739
 Class of County: 6th
 No. of Common Pleas Court Judgeships: 2



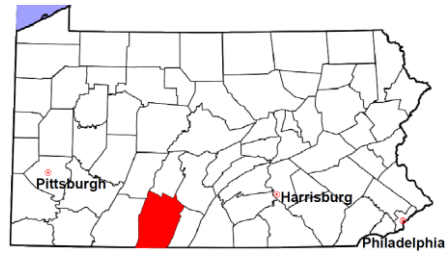
2011 Relinquishments/Terminations	No. of Cases
Cases Pending 1/1/2011	18
New Cases Filed in 2011	28
Cases Available for Processing	46
Processed By:	
Contested before a Judge	9 20.5%
Uncontested	30 68.2%
Other	5 11.4%
Cases Processed	44 100.0%
Cases Pending 12/31/2011	2

Relinquishments/Terminations New Cases Filed, 2002-2011



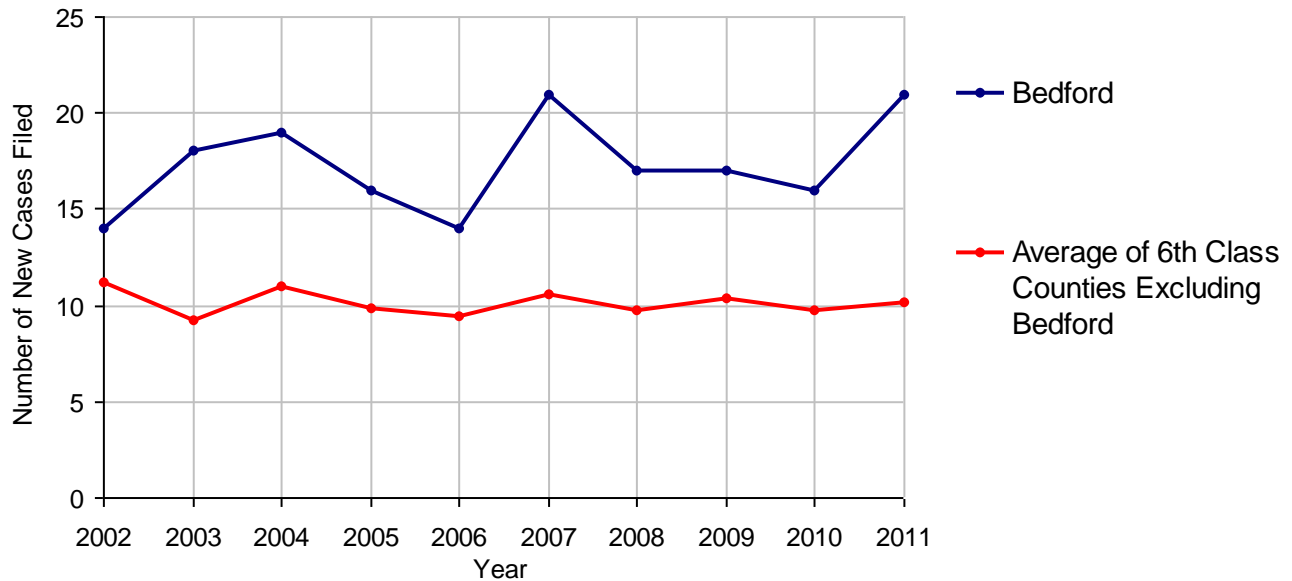
Bedford County

2011 Population Estimate: 49,739
 Class of County: 6th
 No. of Common Pleas Court Judgeships: 2



2011 Appointment of Guardians		No. of Cases
Cases Pending 1/1/2011		3
New Cases Filed in 2011		21
Cases Available for Processing		24
Processed By:		
Contested before a Judge		0
Uncontested		20 90.9%
Other		2 9.1%
Cases Processed		22 100.0%
Cases Pending 12/31/2011		2

Appointment of Guardians New Cases Filed, 2002-2011

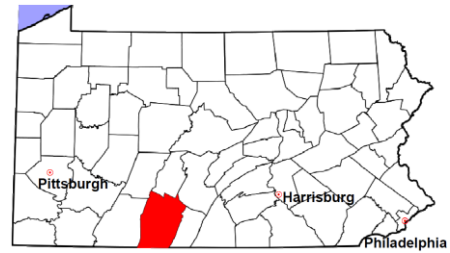


Bedford County

2011 Population Estimate: 49,739

Class of County: 6th

No. of Common Pleas Court Judgeships: 2



2011 Jury Activity and Performance Measures

A. Juror Days	770
B. Number Sent to Voir Dire	400
Voir Dire Attendance Rate (B/A * 100)	51.9%
C. Number of Jurors Selected	138
Juror Selection Rate (C/B * 100)	34.5%

Note: In mid-2011, AOPC began utilizing the National Center for State Courts' Jury Managers' Toolbox for collecting jury data. This has resulted in limited jury performance measures being reported for 2011. Additional data will be available in 2012.