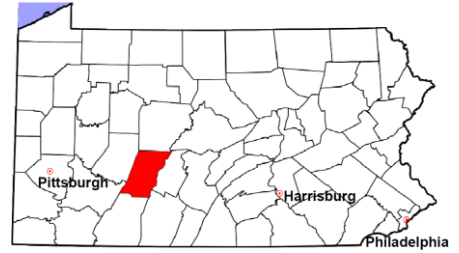


Cambria County

2011 Population Estimate: 143,728
 Class of County: 4th
 No. of Common Pleas Court Judgeships: 5



2011 Criminal	No. of Cases
---------------	--------------

Cases Pending 1/1/2011	1,169
New Cases Filed in 2011	2,513
Reopened Cases	195
Cases Available for Disposition	3,877

Disposed by:

Withdrawn/Dismissed	152	6.0%
ARD	494	19.6%
Guilty Plea	1,654	65.6%
Non-Jury Trial	5	0.2%
Jury Trial	10	0.4%
Inactive	140	5.5%
Other	68	2.7%
Total Cases Disposed	2,523	100.0%

Cases Pending 12/31/2011 **1,354**

Cases Awaiting Sentencing 280

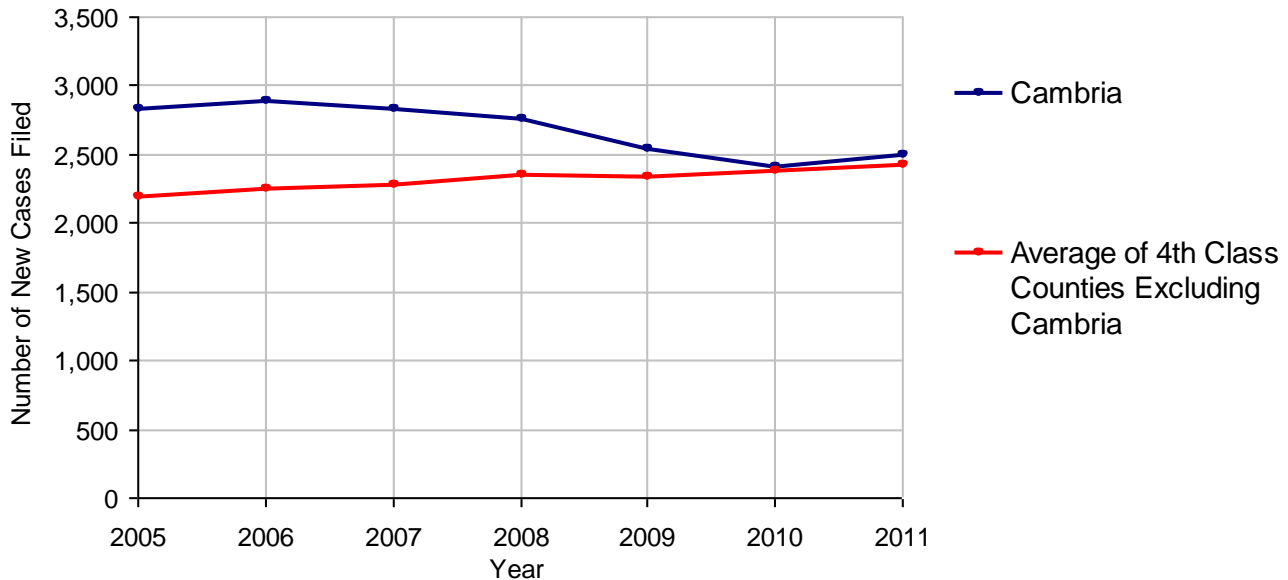
Data provided by CPCMS



Age of Pending Cases as of 12/31/2011

0-60 Days	405	29.9%
61-120 Days	322	23.8%
121-180 Days	190	14.0%
181-240 Days	143	10.6%
241-300 Days	93	6.9%
301-360 Days	57	4.2%
Over 360 Days	144	10.6%
Total	1,354	100.0%

Criminal New Cases Filed, 2005-2011

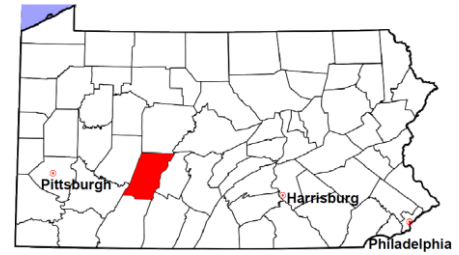


Cambria County

2011 Population Estimate: 143,728

Class of County: 4th

No. of Common Pleas Court Judgeships: 5



2011 Criminal - New Cases by Case Type



Case Type	Felony	Misdemeanor	Summary /Ungraded	Total
Person	188	214	2	404
Property	405	412	4	821
Drug	201	155	1	357
Weapon	18	16	0	34
Public Order	112	180	1	293
Motor Vehicle - DWI/DUI	0	587	0	587
Motor Vehicle - Other	2	15	0	17
Other	0	0	0	0
Total	926	1,579	8	2,513
	36.8%	62.8%	0.3%	100.0%

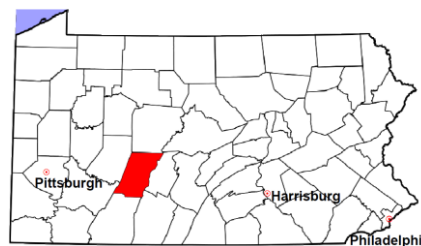
Data provided by CPCMS

Cambria County

2011 Population Estimate: 143,728

Class of County: 4th

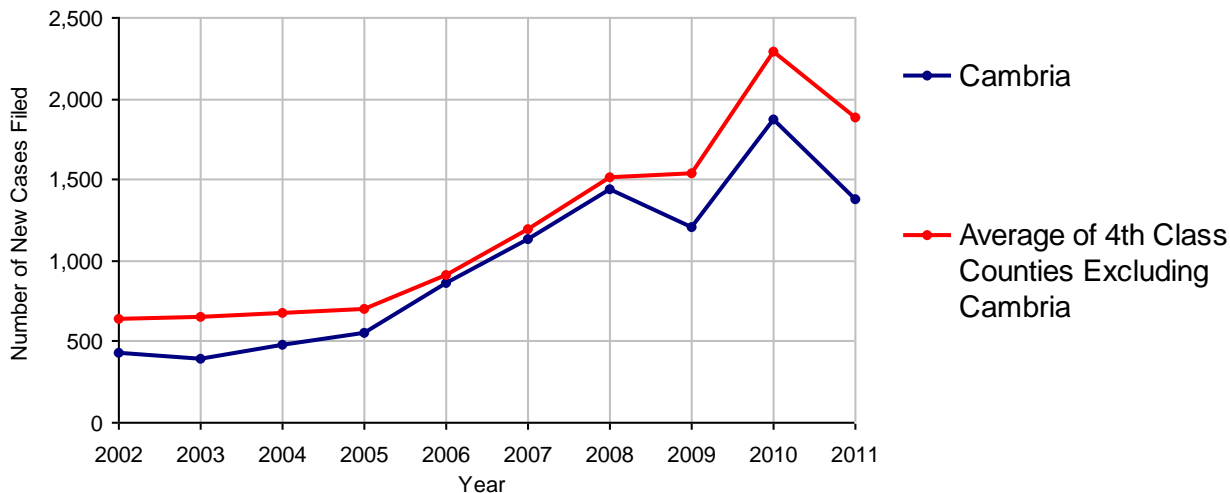
No. of Common Pleas Court Judgeships: 5



2011 Civil	Civil Action	Other	Total
Cases Pending 1/1/2011	1,683	997	2,680
Docketed Cases	826	557	1,383
Arbitration Appeals	0	0	0
Transferred In	0	0	0
Returned to Active	0	0	0
Cases Available for Processing	2,509	1,554	4,063
Disposed By:			
Default Judgments	331	163	494
Cases Decided by Arbitration Board	37	0	37
Dispositive Motions	0	0	0
Settlements	379	105	484
Moved to Inactive Status	0	0	0
Transferred/Withdrawn	4	1	5
Pa.R.J.A. 1901 Administrative Purge	0	0	0
Other	64	14	78
Jury Trial	8	0	8
Non-Jury Trial	8	0	8
Total Cases Disposed	831	283	1,114
Cases Pending 12/31/2011	1,678	1,271	2,949

Age of Pending Cases as of 12/31/2011 (Civil Action Only)		
0-6 months	358	21.3%
7-12 months	216	12.9%
13-18 months	289	17.2%
19-24 months	228	13.6%
25-30 months	367	21.9%
31-36 months	188	11.2%
37-42 months	2	0.1%
43-48 months	0	
49-54 months	1	0.1%
55-60 months	1	0.1%
61-66 months	25	1.5%
67-72 months	2	0.1%
Over 72 months	1	0.1%
Total	1,678	100.0%

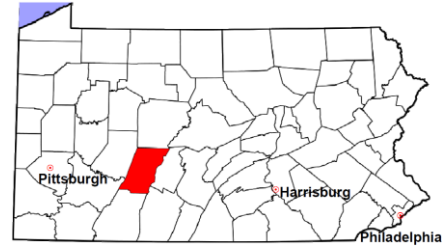
Docketed Cases, 2002-2011



Note: Prior to June 2010, docketed cases under the "Other" category were not reported. The reporting of these cases starting from June 2010 may contribute to an increase in docketed cases from 2009 to 2010.

Cambria County

2011 Population Estimate: 143,728
 Class of County: 4th
 No. of Common Pleas Court Judgeships: 5



2011 Civil - Docketed Cases Listed by Case Type

TORT (does not include mass tort)

Intentional	10
Malicious Prosecution	1
Motor Vehicle	81
Nuisance	3
Premise Liability	24
Product Liability	5
Slander/Libel/Defamation	0
Other	26

MASS TORT

Asbestos	21
Tobacco	0
Toxic Tort - DES	0
Toxic Tort - Implant	0
Toxic Waste	0
Other	0

PROFESSIONAL LIABILITY

Dental	0
Legal	5
Medical Malpractice	22
Other	1

CONTRACT

(does not include judgments)

Buyer Plaintiff	10
Debt Collection:	
Credit Card	386
Debt Collection: Other	174
Employment Dispute:	
Discrimination	0
Employment Dispute: Other	2
Other	33

REAL PROPERTY

Ejectment*	15
Eminent Domain/ Condemnation*	11
Ground Rent	2
Landlord/Tenant Dispute	20
Mortgage Forclosures:	
Residential*	229
Commercial*	80
Partition of Real Property*	9
Quiet Title*	27
Other*	21

CIVIL APPEALS

Administrative Agencies

Board of Assessment*	6
Board of Elections*	0
Dept. of Transportation*	49
Zoning Board*	6
Statutory Appeal - Other*	12
Other*	31

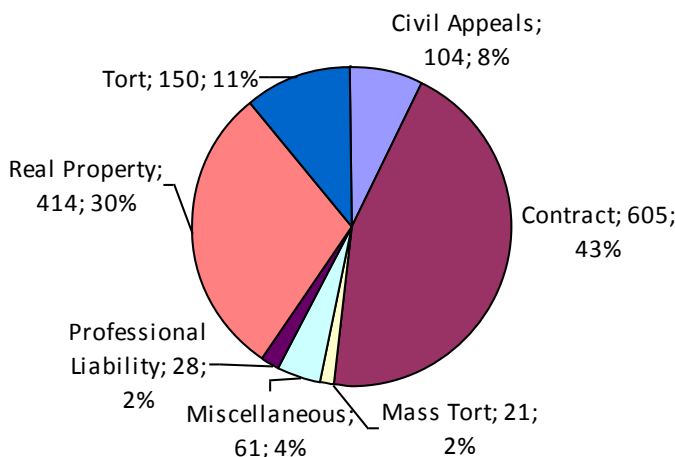
MISCELLANEOUS

Common Law/ Statutory Arbitration*	0
Declaratory Judgment*	4
Mandamus*	1
Non-Domestic Relations Restraining Order*	0
Quo Warranto*	0
Replevin*	6
Other*	50

TOTAL DOCKETED CASES:

1,383

* Civil Other



Of the Docketed Cases:

Pro Se Filings:	19	1.4%
Class Action Suits:	2	0.1%
MDJ Appeals:	125	9.0%

Cambria County

2011 Population Estimate: 143,728
 Class of County: 4th
 No. of Common Pleas Court Judgeships: 5

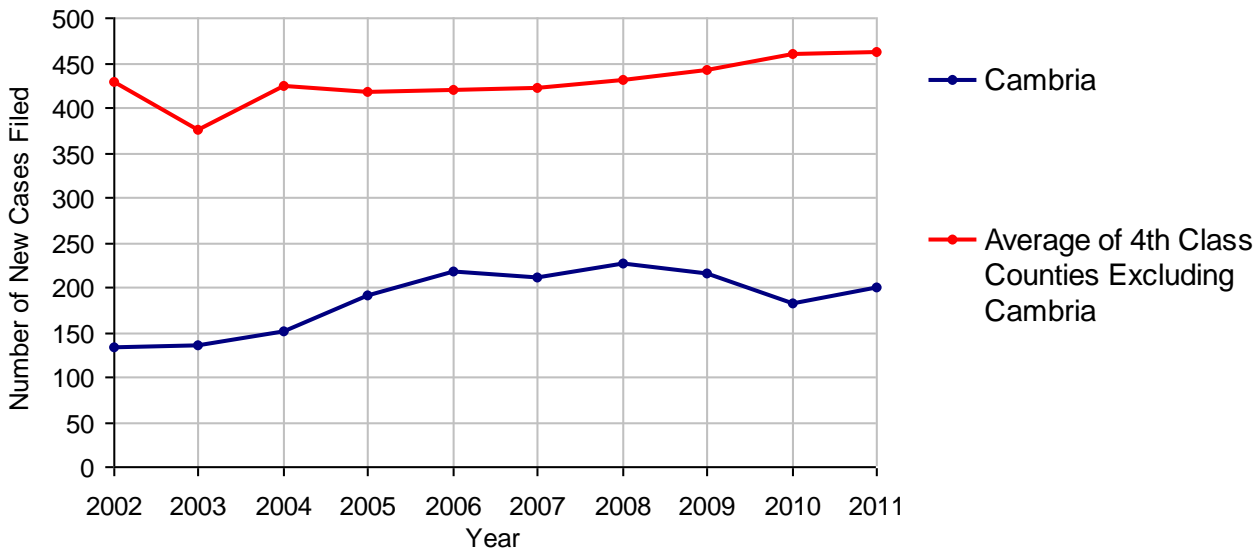


2011 Protection From Abuse

**No. of
Petitions**

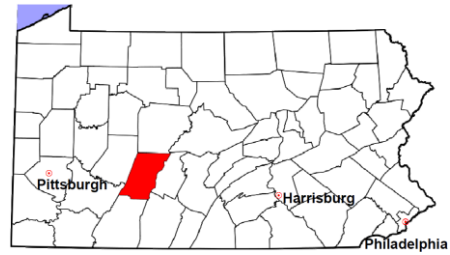
Cases Pending 1/1/2011	0
New Cases Filed in 2011	199
<i>Of these, Petitions Requesting Temporary Orders: 199 (100.0%)</i>	
<i>Temporary Orders DENIED: 40 (20.1%), Temporary Orders GRANTED: 159 (79.9%)</i>	
Cases Available for Processing	199
Processed By:	
Temporary Order DENIED After Ex Parte Hearing and No Evidentiary Hearing Scheduled	5 3.3%
Temporary Order DISMISSED After Evidentiary Hearing and No Final Order Entered	0
Final Order DENIED After Evidentiary Hearing Before a Judge	0
Final Order GRANTED After Evidentiary Hearing Before a Judge	76 50.3%
Plaintiff Did Not Appear For Evidentiary Hearing	0
Final Order by STIPULATION OR AGREEMENT Between the Parties	69 45.7%
Petition WITHDRAWN by Plaintiff	1 0.7%
TRANSFERRED to Another Jurisdiction	0
DECEASED Party	0
Other	0
Cases Processed	151 100.0%
Cases Pending 12/31/2011	48

PFA New Cases Filed, 2002-2011

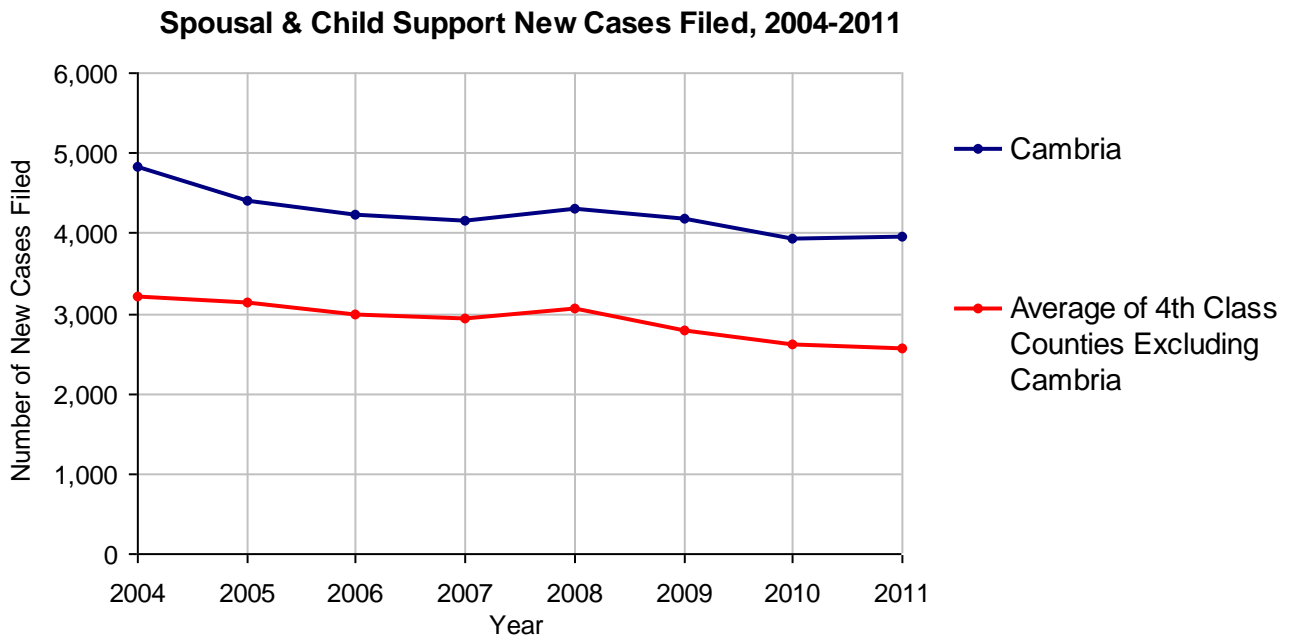


Cambria County

2011 Population Estimate: 143,728
 Class of County: 4th
 No. of Common Pleas Court Judgeships: 5



2011 Spousal & Child Support	No. of Petitions	
Cases Pending 1/1/2011	709	
New Cases Filed in 2011	3,963	
Dockets Transferred In (+)	100	
Dockets Transferred Out (-)	50	
Cases Available for Processing	4,722	
Processed By:		
Judge	27	0.7%
Intake Officer	3,816	94.2%
Hearing Officer	207	5.1%
Other	0	
Cases Processed	4,050	100.0%
Cases Pending 12/31/2011	672	

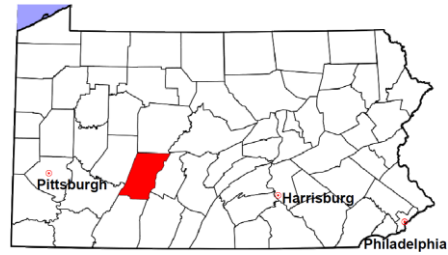


Cambria County

2011 Population Estimate: 143,728

Class of County: 4th

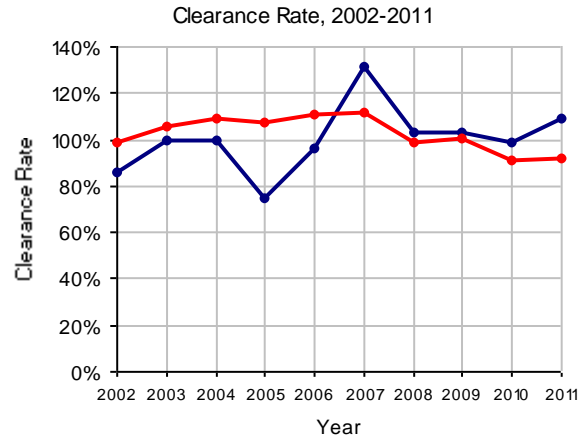
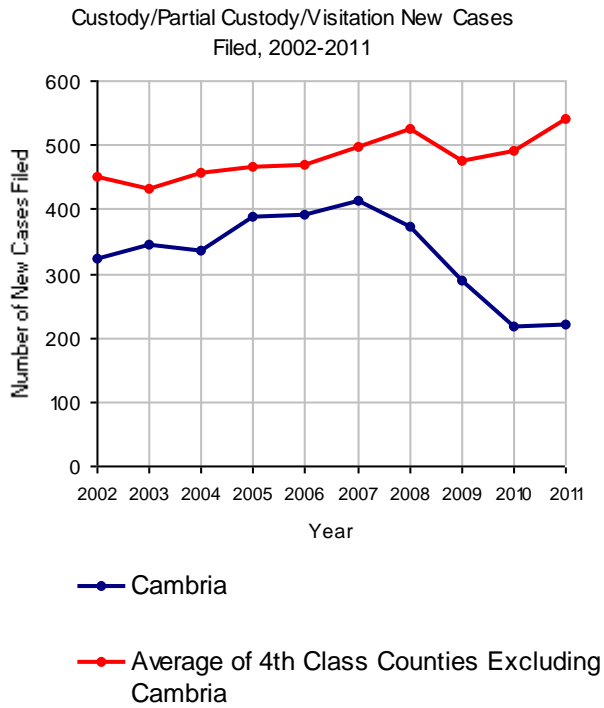
No. of Common Pleas Court Judgeships: 5



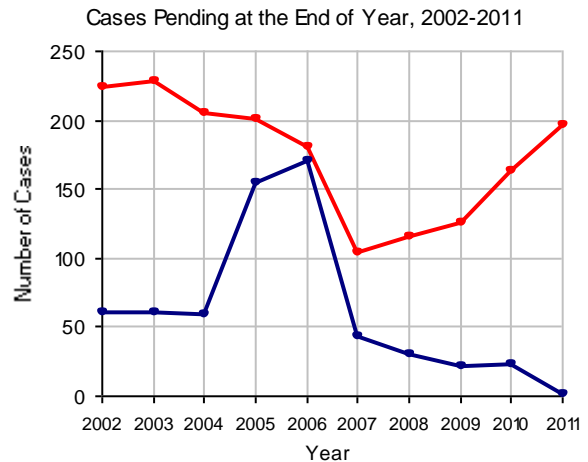
2011 Custody/Partial Custody/Visitation

No. of
Petitions

Cases Pending 1/1/2011	23
New Cases Filed in 2011	222
Cases Available for Processing	245
Processed By:	
Judge	3 1.2%
Non-Judicial Officer	225 92.6%
Other	15 6.2%
Cases Processed	243 100.0%
Cases Pending 12/31/2011	2

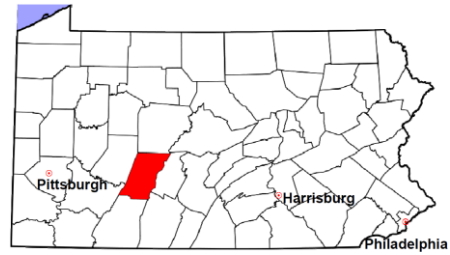


Note: Clearance Rate = Cases Processed / New Cases Filed



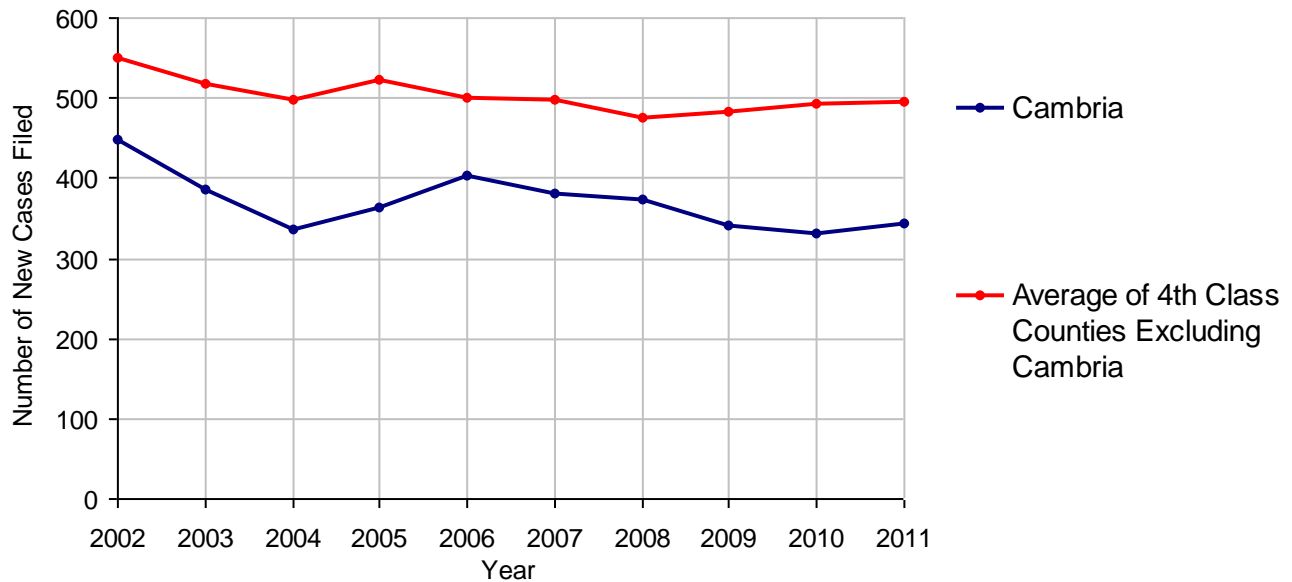
Cambria County

2011 Population Estimate: 143,728
 Class of County: 4th
 No. of Common Pleas Court Judgeships: 5



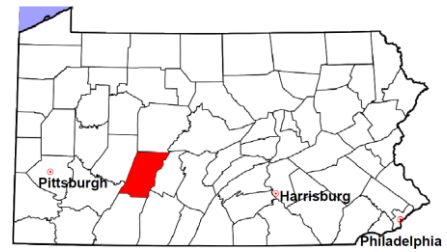
2011 Divorce	No. of Petitions	
Cases Pending 1/1/2011	5	
New Cases Filed in 2011	344	
Cases Available for Processing	349	
Processed By:		
Contested Before a Judge	18	5.6%
Contested Before a Master	0	
Uncontested	301	93.5%
Other	3	0.9%
Cases Processed	322	100.0%
Cases Pending 12/31/2011	27	

Divorce New Cases Filed, 2002-2011



Cambria County

2011 Population Estimate: 143,728
 Class of County: 4th
 No. of Common Pleas Court Judgeships: 5



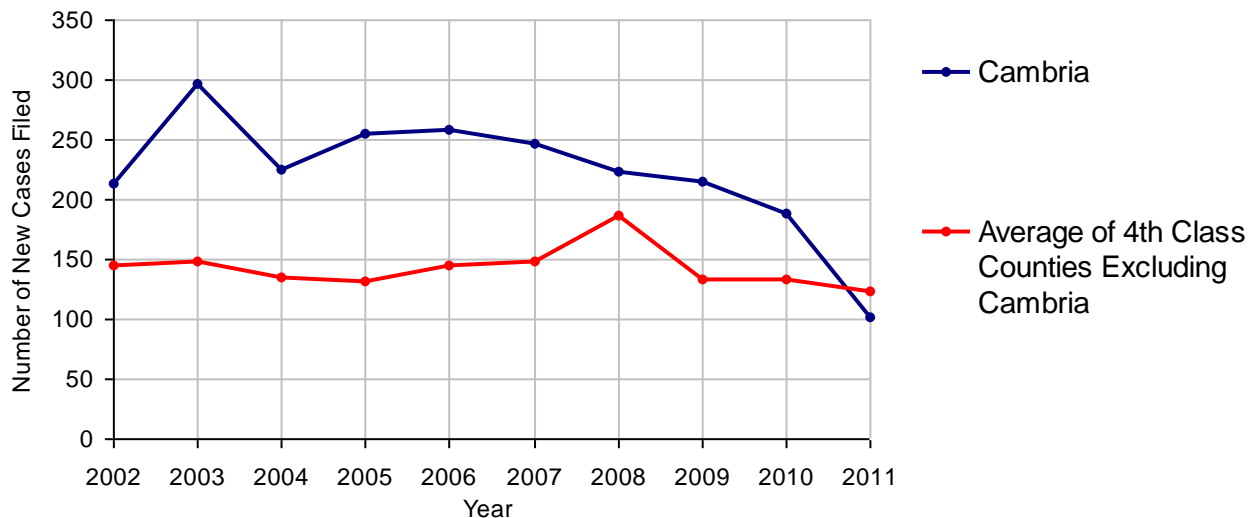
2011 Juvenile Dependency - Active Dependent Inventory



	Abuse/ Neglect	Status Offenses	Total
Cases Pending 1/1/2011	2	0	2
New Petitions Filed in 2011	102	0	102
Other	1	1	2
Total Petitions Available for Processing	105	1	106
Processed by:			
Adjudicated Dependent			
Judge	85	1	86
Master	0	0	0
Adjudicated NOT Dependent			
Judge	8	0	8
Master	0	0	0
Withdrawn/Dismissed/Inactive	0	0	0
Other	11	0	11
Total Petitions Processed	104	1	105
Cases Pending 12/31/2011	1	0	1

Data provided by CPCMS

Abuse/Neglect and Status Offenses New Cases Filed, 2002-2011



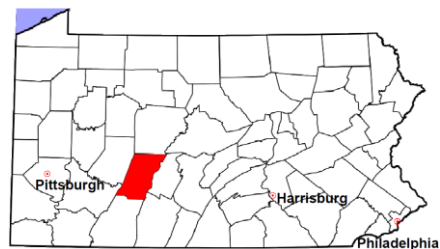
Note: Dependency data for 2002-2010 were collected manually. Dependency data for 2011 were provided by CPCMS.

Cambria County

2011 Population Estimate: 143,728

Class of County: 4th

No. of Common Pleas Court Judgeships: 5



2011 Juvenile Dependency - Adjudicated Dependent Inventory



	Abuse/ Neglect	Status Offenses	Total	
Cases Pending 1/1/2011	105	0	105	
New Adjudicated Dependent Cases	85	1	86	
Other	6	0	6	
Total Adjudicated Dependent Cases	196	1	197	
<u>Court Supervision Terminated:</u>				
Family Reunification	24	0	24	47.1%
Adoption	0	0	0	
Placement with a Relative/Guardian	3	0	3	5.9%
Aged Out	8	0	8	15.7%
Other Permanency Outcomes*	1	0	1	2.0%
Other**	15	0	15	29.4%
Total Adjudicated Dependent Cases Terminated	51	0	51	100.0%
Cases Pending 12/31/2011	145	1	146	

Data provided by CPCMS

* Other Permanency Outcomes include: adjudicated delinquent, death due to natural causes, emancipation, permanent living arrangement, and parent has come forward.

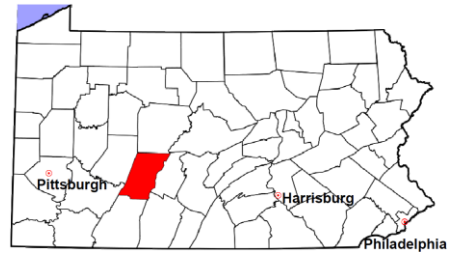
** Other includes cases where Court Supervision is terminated due to transfer out of jurisdiction, withdrawal and administrative closures.

Cambria County

2011 Population Estimate: 143,728

Class of County: 4th

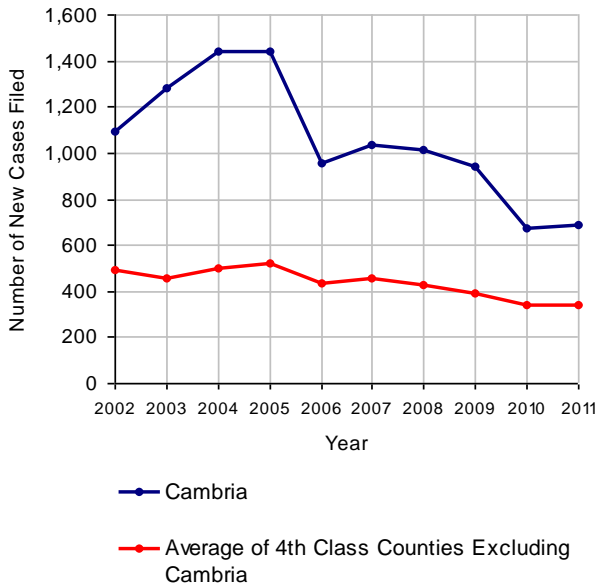
No. of Common Pleas Court Judgeships: 5



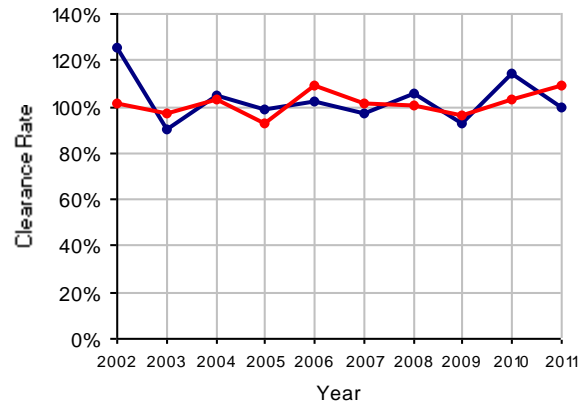
2011 Juvenile Delinquency

	No. of Cases
Cases Pending 1/1/2011	143
New Cases Filed in 2011	689
Cases Available for Processing	832
Processed By:	
Judge	247 35.9%
Non-Judicial Officer	441 64.1%
Other	0
Cases Processed	688 100.0%
Cases Pending 12/31/2011	144

Juvenile Delinquency New Cases Filed, 2002-2011

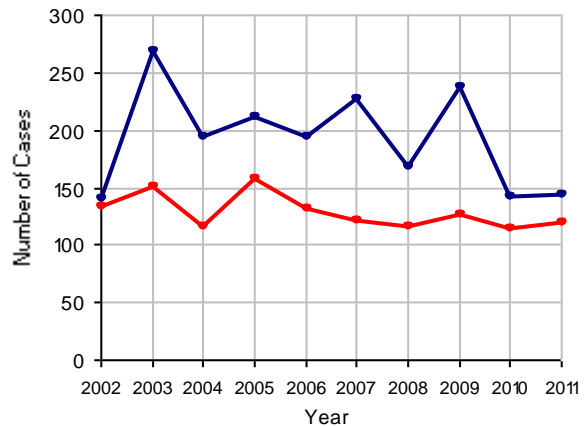


Clearance Rate, 2002-2011



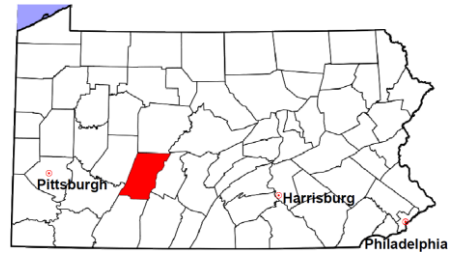
Note: Clearance Rate = Cases Processed / New Cases Filed

Cases Pending at the End of Year, 2002-2011



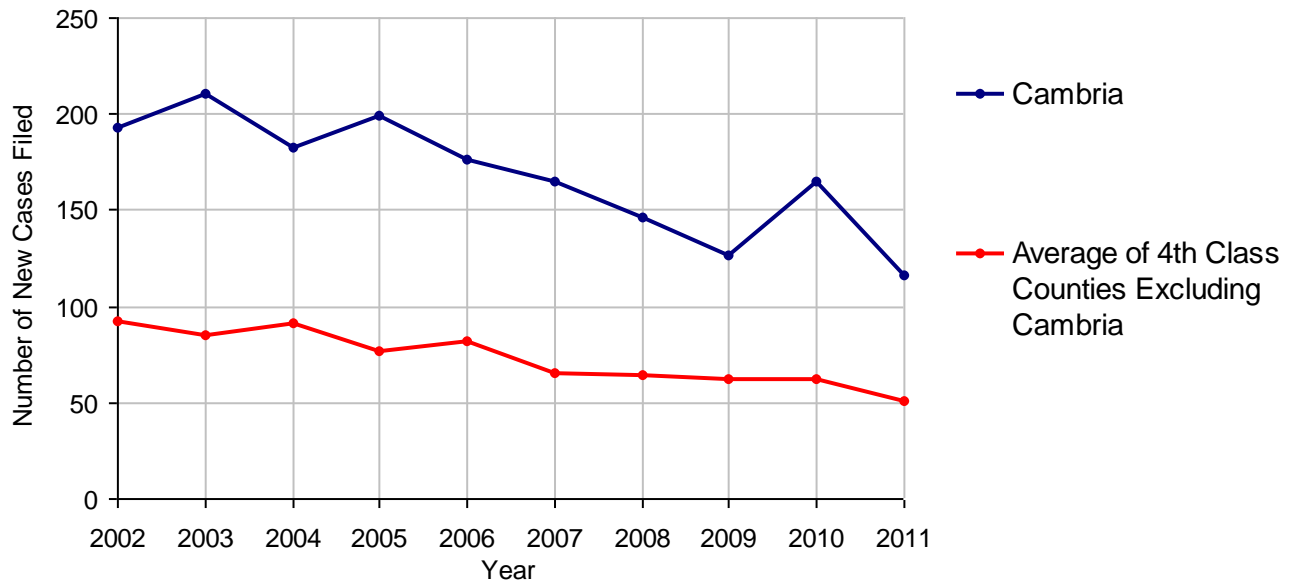
Cambria County

2011 Population Estimate: 143,728
 Class of County: 4th
 No. of Common Pleas Court Judgeships: 5



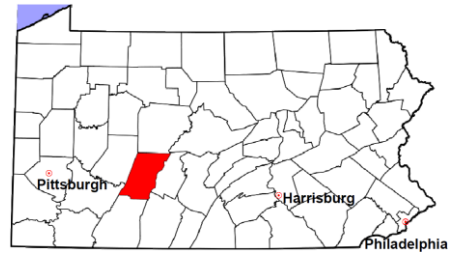
2011 Accounts	No. of Cases	
Cases Pending 1/1/2011	25	
New Cases Filed in 2011	116	
Cases Available for Processing	141	
Processed By:		
Contested before a Judge	8	6.7%
Contested before a Non-judicial Officer	0	
Uncontested	110	91.7%
Other	2	1.7%
Cases Processed	120	100.0%
Cases Pending 12/31/2011	21	

Accounts New Cases Filed, 2002-2011



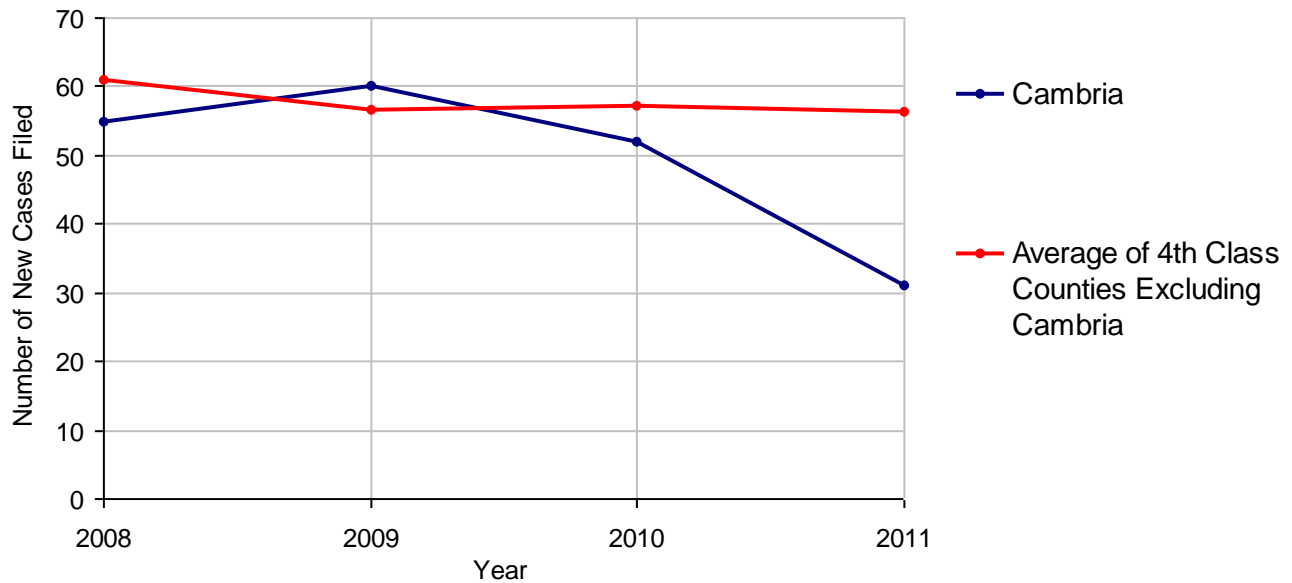
Cambria County

2011 Population Estimate: 143,728
 Class of County: 4th
 No. of Common Pleas Court Judgeships: 5



2011 Adoptions		No. of Cases	
Cases Pending 1/1/2011		6	
New Cases Filed in 2011		31	
Cases Available for Processing		37	
Processed By:			
Contested before a Judge	Granted	0	
	Denied	0	
Uncontested	Granted	35	94.6%
	Denied	0	
Other		2	5.4%
Cases Processed		37	100.0%
Cases Pending 12/31/2011		0	

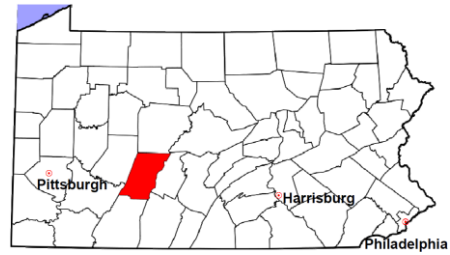
Adoptions New Cases Filed, 2008-2011



Note: Prior to 2008, each petition was counted as one new case, regardless of the number of children listed on the petition. Starting in 2008, each child listed on a petition is counted as a separate case. Therefore, statistics for the years since 2008 should not be compared to those for the years prior to 2008.

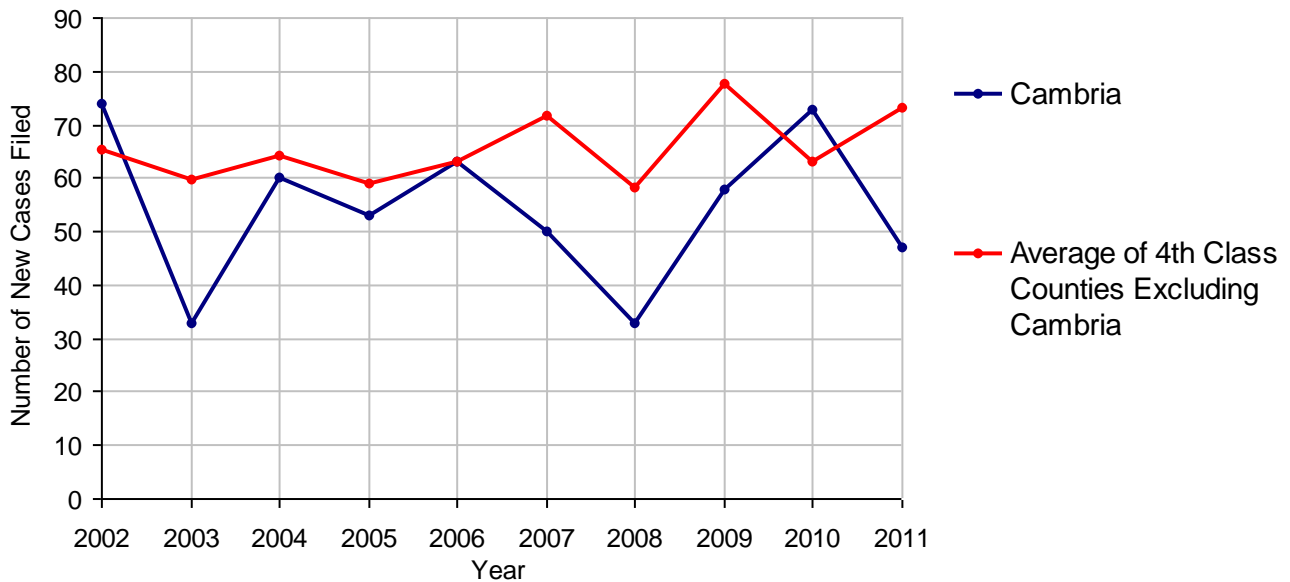
Cambria County

2011 Population Estimate: 143,728
 Class of County: 4th
 No. of Common Pleas Court Judgeships: 5



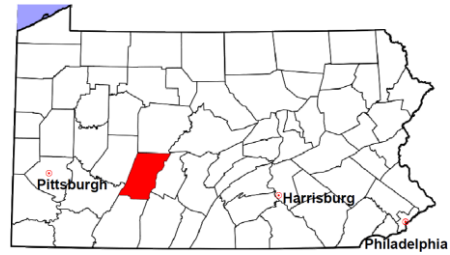
2011 Relinquishments/Terminations		No. of Cases
Cases Pending 1/1/2011		30
New Cases Filed in 2011		47
Cases Available for Processing		77
Processed By:		
Contested before a Judge	13	29.5%
Uncontested	24	54.5%
Other	7	15.9%
Cases Processed	44	100.0%
Cases Pending 12/31/2011		33

Relinquishments/Terminations New Cases Filed, 2002-2011



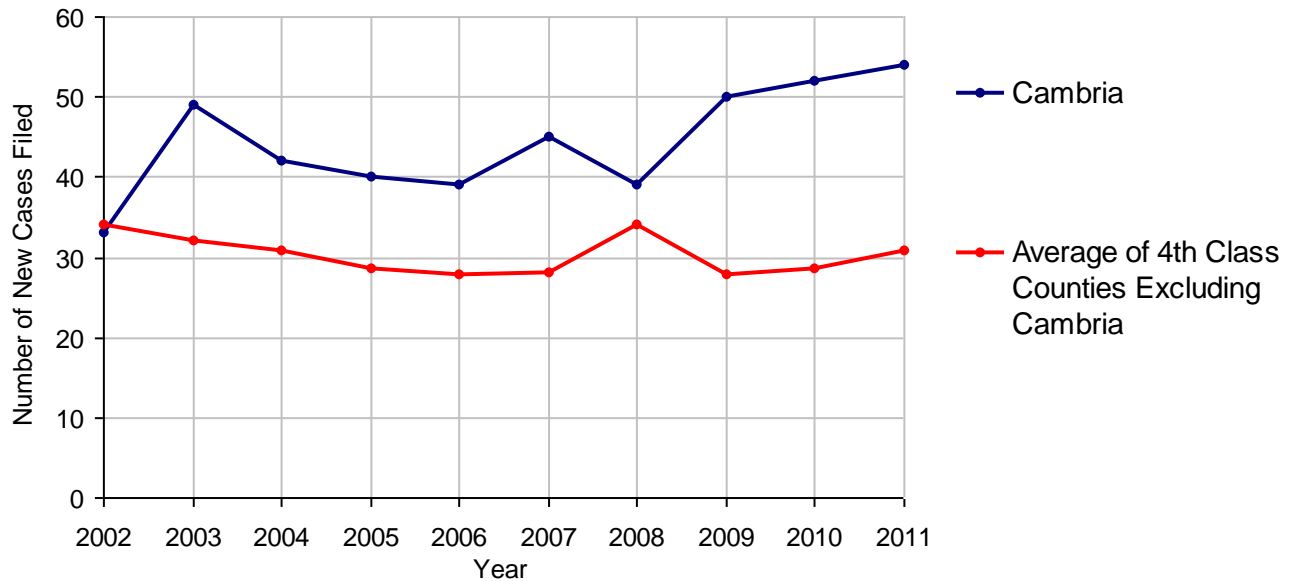
Cambria County

2011 Population Estimate: 143,728
 Class of County: 4th
 No. of Common Pleas Court Judgeships: 5



2011 Appointment of Guardians	No. of Cases	
Cases Pending 1/1/2011	32	
New Cases Filed in 2011	54	
Cases Available for Processing	86	
Processed By:		
Contested before a Judge	0	
Uncontested	45	77.6%
Other	13	22.4%
Cases Processed	58	100.0%
Cases Pending 12/31/2011	28	

Appointment of Guardians New Cases Filed, 2002-2011

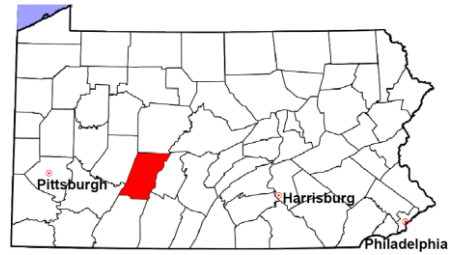


Cambria County

2011 Population Estimate: 143,728

Class of County: 4th

No. of Common Pleas Court Judgeships: 5



2011 Jury Activity and Performance Measures

A. Juror Days	1,386
B. Number Sent to Voir Dire	848
Voir Dire Attendance Rate (B/A * 100)	61.2%
C. Number of Jurors Selected	300
Juror Selection Rate (C/B * 100)	35.4%

Note: In mid-2011, AOPC began utilizing the National Center for State Courts' Jury Managers' Toolbox for collecting jury data. This has resulted in limited jury performance measures being reported for 2011. Additional data will be available in 2012.