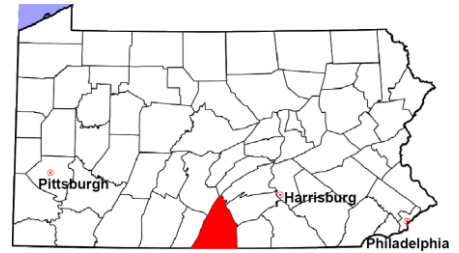


Franklin County

2011 Population Estimate: 150,811
 Class of County: 4th
 No. of Common Pleas Court Judgeships: 5
 (Franklin and Fulton combined)



2011 Criminal No. of Cases

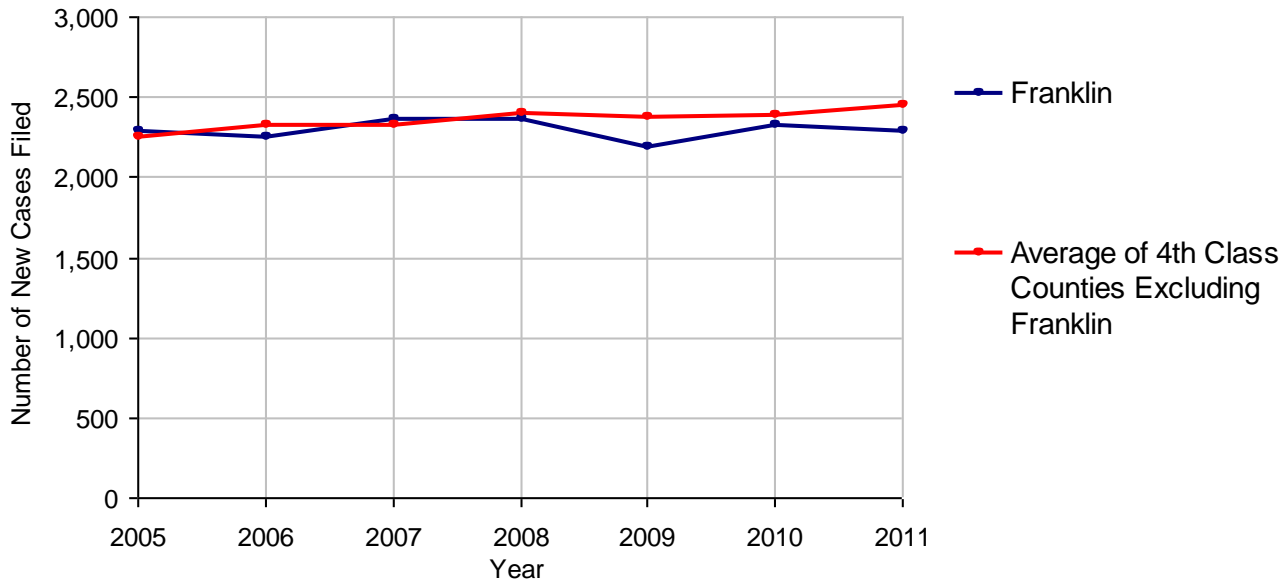
Cases Pending 1/1/2011	718	
New Cases Filed in 2011	2,293	
Reopened Cases	128	
Cases Available for Disposition	3,139	
Disposed by:		
Withdrawn/Dismissed	204	8.6%
ARD	457	19.3%
Guilty Plea	1,517	64.0%
Non-Jury Trial	19	0.8%
Jury Trial	73	3.1%
Inactive	54	2.3%
Other	46	1.9%
Total Cases Disposed	2,370	100.0%
Cases Pending 12/31/2011	769	
Cases Awaiting Sentencing	173	



Age of Pending Cases as of 12/31/2011		
0-60 Days	261	33.9%
61-120 Days	142	18.5%
121-180 Days	101	13.1%
181-240 Days	60	7.8%
241-300 Days	51	6.6%
301-360 Days	35	4.6%
Over 360 Days	119	15.5%
Total	769	100.0%

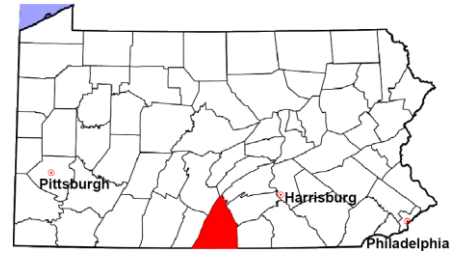
Data provided by CPCMS

Criminal New Cases Filed, 2005-2011



Franklin County

2011 Population Estimate: 150,811
Class of County: 4th
No. of Common Pleas Court Judgeships: 5
(Franklin and Fulton combined)



2011 Criminal - New Cases by Case Type

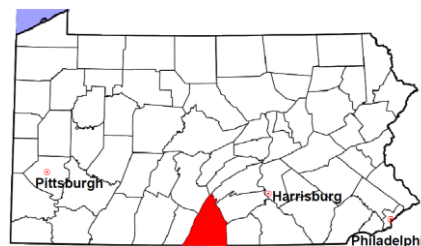


Case Type	Felony	Misdemeanor	Summary /Ungraded	Total
Person	141	183	0	324
Property	245	322	5	572
Drug	135	211	1	347
Weapon	21	7	0	28
Public Order	92	139	0	231
Motor Vehicle - DWI/DUI	0	781	0	781
Motor Vehicle - Other	1	8	0	9
Other	1	0	0	1
Total	636	1,651	6	2,293
	27.7%	72.0%	0.3%	100.0%

Data provided by CPCMS

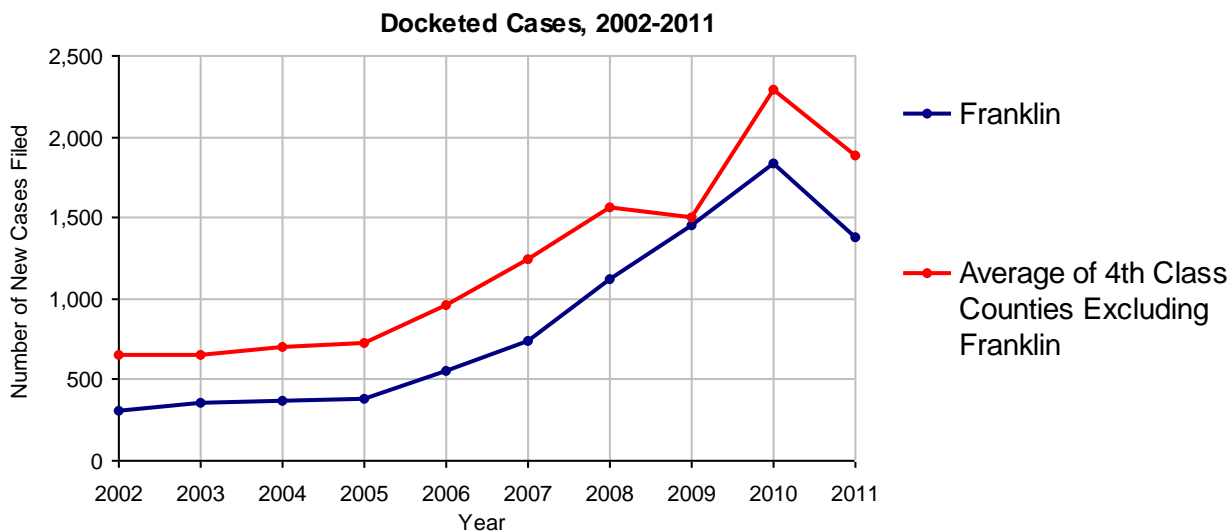
Franklin County

2011 Population Estimate: 150,811
 Class of County: 4th
 No. of Common Pleas Court Judgeships: 5
 (Franklin and Fulton combined)



2011 Civil	Civil Action	Other	Total
Cases Pending 1/1/2011	658	398	1,056
Docketed Cases	790	584	1,374
Arbitration Appeals	0	0	0
Transferred In	0	0	0
Returned to Active	0	0	0
Cases Available for Processing	1,448	982	2,430
Disposed By:			
Default Judgments	0	0	0
Cases Decided by Arbitration Board	72	0	72
Dispositive Motions	0	0	0
Settlements	205	181	386
Moved to Inactive Status	0	2	2
Transferred/Withdrawn	18	13	31
Pa.R.J.A. 1901 Administrative Purge	191	0	191
Other	4	5	9
Jury Trial	2	0	2
Non-Jury Trial	0	0	0
Total Cases Disposed	492	201	693
Cases Pending 12/31/2011	956	781	1,737

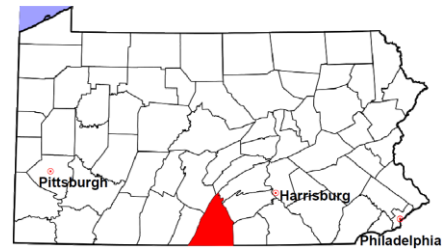
Age of Pending Cases as of 12/31/2011 (Civil Action Only)		
0-6 months	436	45.6%
7-12 months	333	34.8%
13-18 months	161	16.8%
19-24 months	26	2.7%
25-30 months	0	
31-36 months	0	
37-42 months	0	
43-48 months	0	
49-54 months	0	
55-60 months	0	
61-66 months	0	
67-72 months	0	
Over 72 months	0	
Total	956	100.0%



Note: Prior to June 2010, docketed cases under the "Other" category were not reported. The reporting of these cases starting from June 2010 may contribute to an increase in docketed cases from 2009 to 2010.

Franklin County

2011 Population Estimate: 150,811
 Class of County: 4th
 No. of Common Pleas Court Judgeships: 5
 (Franklin and Fulton combined)



2011 Civil - Docketed Cases Listed by Case Type

TORT (does not include mass tort)

Intentional	3
Malicious Prosecution	0
Motor Vehicle	77
Nuisance	0
Premise Liability	12
Product Liability	3
Slander/Libel/Defamation	1
Other	21

MASS TORT

Asbestos	0
Tobacco	0
Toxic Tort - DES	0
Toxic Tort - Implant	0
Toxic Waste	0
Other	0

PROFESSIONAL LIABILITY

Dental	0
Legal	0
Medical Malpractice	12
Other	0

CONTRACT

(does not include judgments)

Buyer Plaintiff	6
Debt Collection:	
Credit Card	405
Other	191
Employment Dispute:	
Discrimination	1
Other	8
Other	35

REAL PROPERTY

Ejectment*	39
Eminent Domain/ Condemnation*	1
Ground Rent	0
Landlord/Tenant Dispute	15
Mortgage Forclosures:	
Residential*	359
Commercial*	20
Partition of Real Property*	0
Quiet Title*	9
Other*	7

CIVIL APPEALS

Administrative Agencies

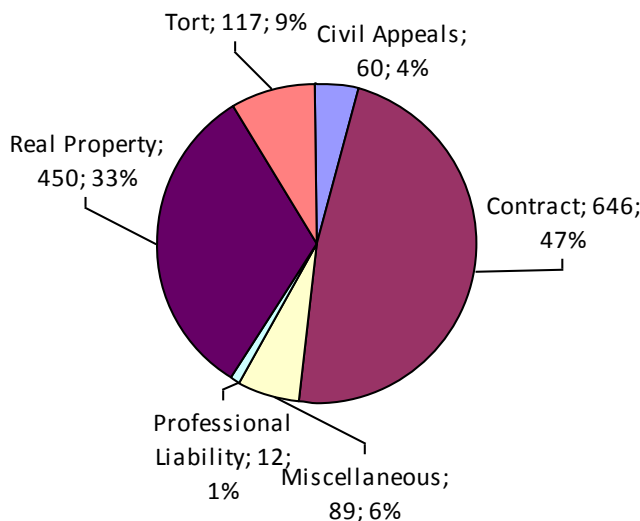
Board of Assessment*	0
Board of Elections*	8
Dept. of Transportation*	26
Zoning Board*	0
Statutory Appeal - Other*	11
Other*	15

MISCELLANEOUS

Common Law/ Statutory Arbitration*	0
Declaratory Judgment*	5
Mandamus*	1
Non-Domestic Relations Restraining Order*	0
Quo Warranto*	0
Replevin*	10
Other*	73

TOTAL DOCKETED CASES:
1,374

* Civil Other



Of the Docketed Cases:

Pro Se Filings:	37	2.7%
Class Action Suits:	6	0.4%
MDJ Appeals:	51	3.7%

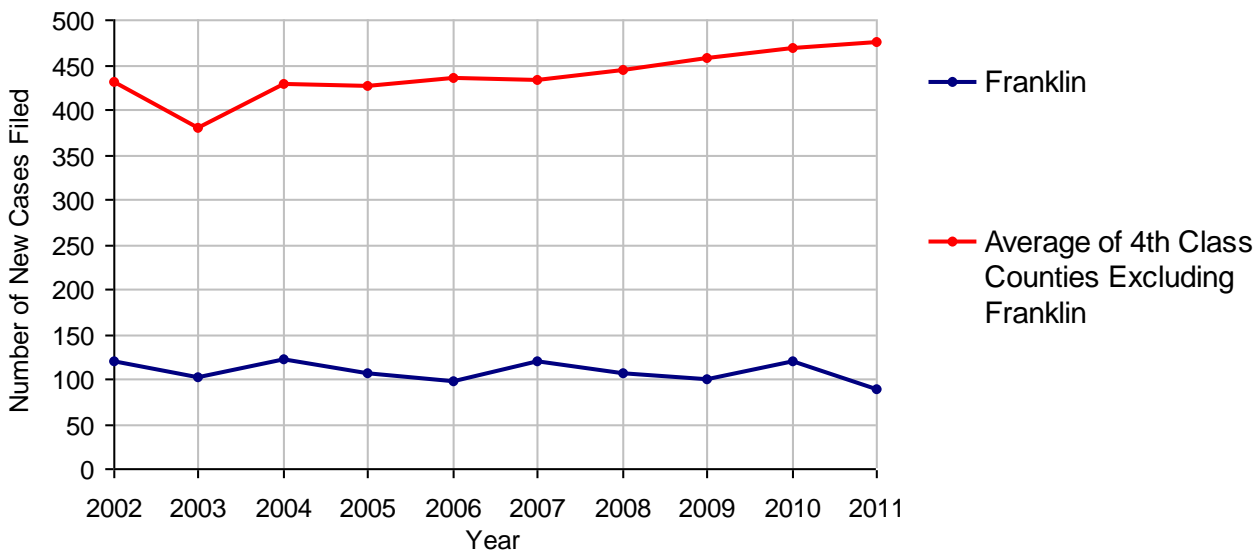
Franklin County

2011 Population Estimate: 150,811
 Class of County: 4th
 No. of Common Pleas Court Judgeships: 5
 (Franklin and Fulton combined)



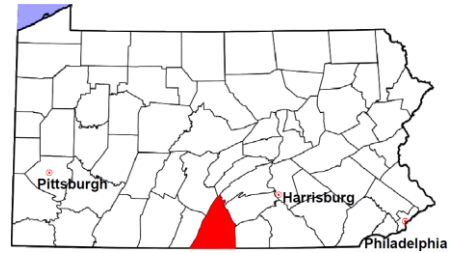
2011 Protection From Abuse	No. of Petitions
Cases Pending 1/1/2011	199
New Cases Filed in 2011	90
<i>Of these, Petitions Requesting Temporary Orders: 88 (97.8%)</i>	
<i>Temporary Orders DENIED: 1 (1.1%), Temporary Orders GRANTED: 87 (98.9%)</i>	
Cases Available for Processing	289
Processed By:	
Temporary Order DENIED After Ex Parte Hearing and No Evidentiary Hearing Scheduled	0
Temporary Order DISMISSED After Evidentiary Hearing and No Final Order Entered	4 4.9%
Final Order DENIED After Evidentiary Hearing Before a Judge	0
Final Order GRANTED After Evidentiary Hearing Before a Judge	11 13.4%
Plaintiff Did Not Appear For Evidentiary Hearing	0
Final Order by STIPULATION OR AGREEMENT Between the Parties	52 63.4%
Petition WITHDRAWN by Plaintiff	11 13.4%
TRANSFERRED to Another Jurisdiction	0
DECEASED Party	0
Other	4 4.9%
Cases Processed	82 100.0%
Cases Pending 12/31/2011	207

PFA New Cases Filed, 2002-2011

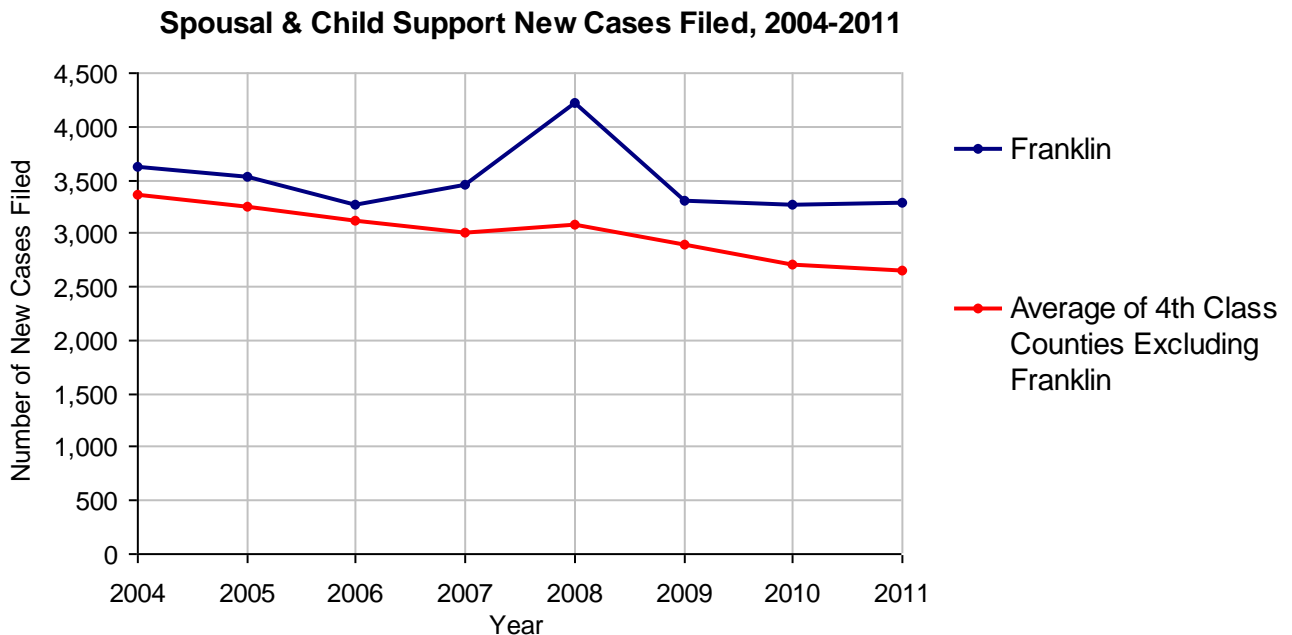


Franklin County

2011 Population Estimate: 150,811
 Class of County: 4th
 No. of Common Pleas Court Judgeships: 5
 (Franklin and Fulton combined)



2011 Spousal & Child Support	No. of Petitions	
Cases Pending 1/1/2011	791	
New Cases Filed in 2011	3,279	
Dockets Transferred In (+)	38	
Dockets Transferred Out (-)	36	
Cases Available for Processing	4,072	
Processed By:		
Judge	56	1.6%
Intake Officer	3,417	98.4%
Hearing Officer	0	
Other	0	
Cases Processed	3,473	100.0%
Cases Pending 12/31/2011	599	

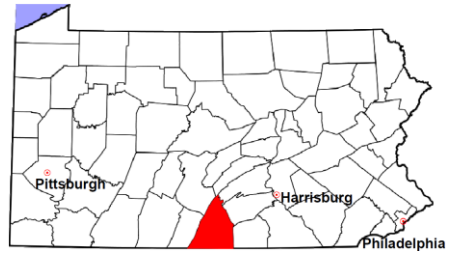


Franklin County

2011 Population Estimate: 150,811

Class of County: 4th

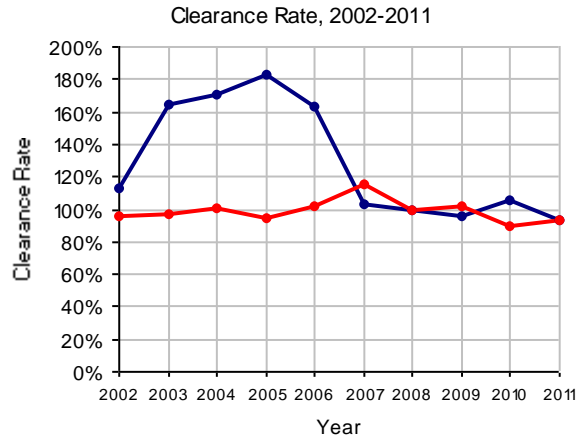
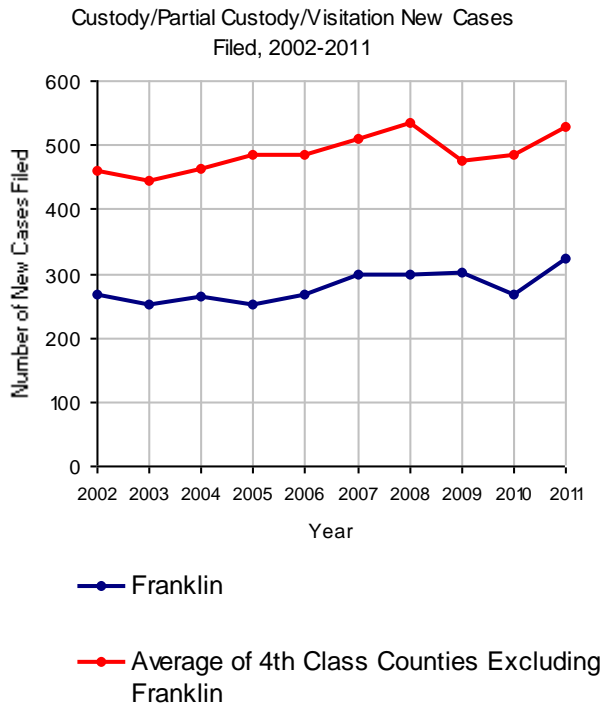
No. of Common Pleas Court Judgeships: 5
(Franklin and Fulton combined)



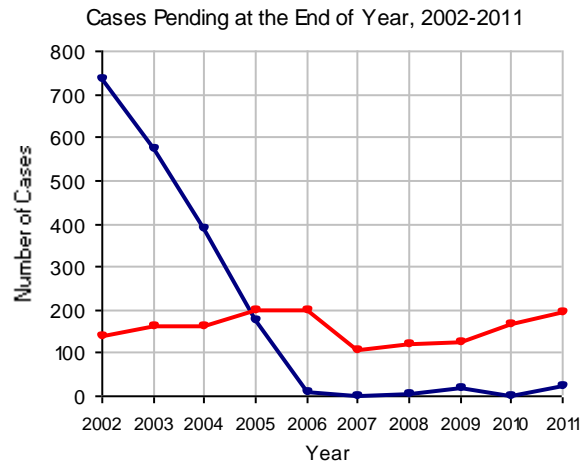
2011 Custody/Partial Custody/Visitation

No. of
Petitions

Cases Pending 1/1/2011	1	
New Cases Filed in 2011	322	
Cases Available for Processing	323	
Processed By:		
Judge	0	
Non-Judicial Officer	285	95.0%
Other	15	5.0%
Cases Processed	300	100.0%
Cases Pending 12/31/2011	23	

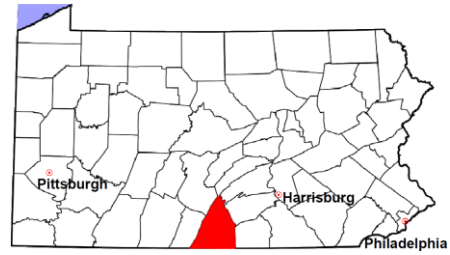


Note: Clearance Rate = Cases Processed / New Cases Filed



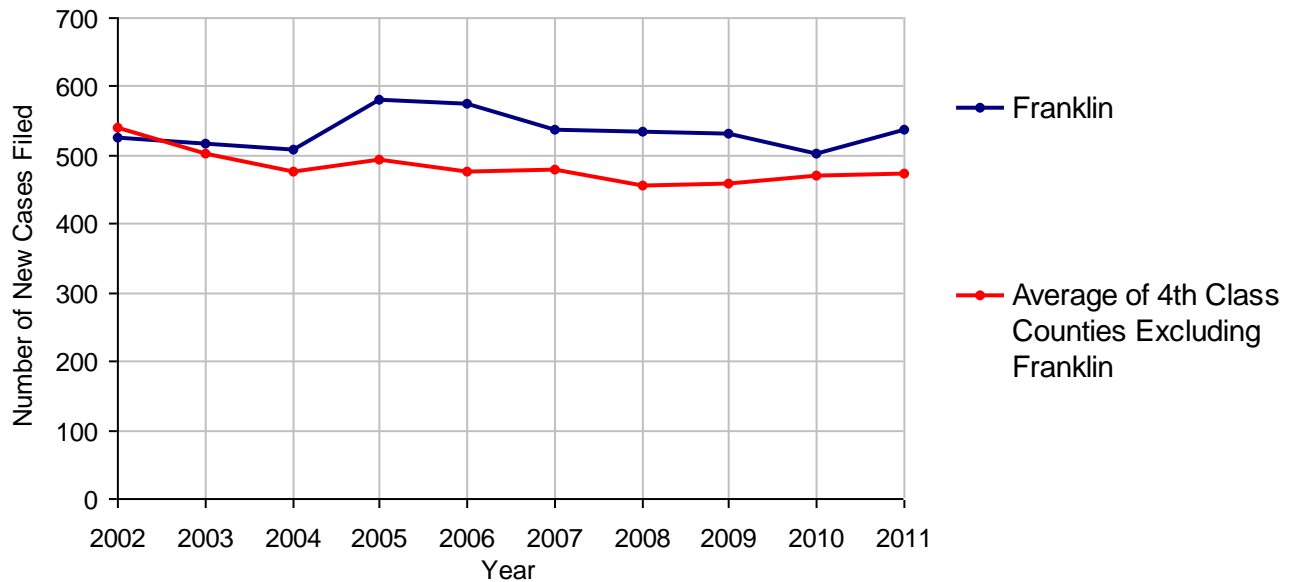
Franklin County

2011 Population Estimate: 150,811
 Class of County: 4th
 No. of Common Pleas Court Judgeships: 5
 (Franklin and Fulton combined)



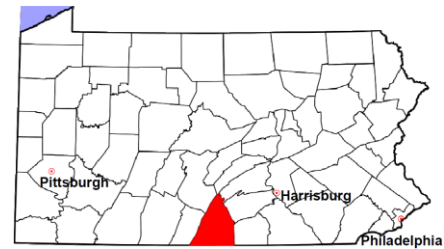
2011 Divorce	No. of Petitions	
Cases Pending 1/1/2011	655	
New Cases Filed in 2011	537	
Cases Available for Processing	1,192	
Processed By:		
Contested Before a Judge	0	
Contested Before a Master	14	2.6%
Uncontested	479	89.0%
Other	45	8.4%
Cases Processed	538	100.0%
Cases Pending 12/31/2011	654	

Divorce New Cases Filed, 2002-2011



Franklin County

2011 Population Estimate: 150,811
 Class of County: 4th
 No. of Common Pleas Court Judgeships: 5
 (Franklin and Fulton combined)



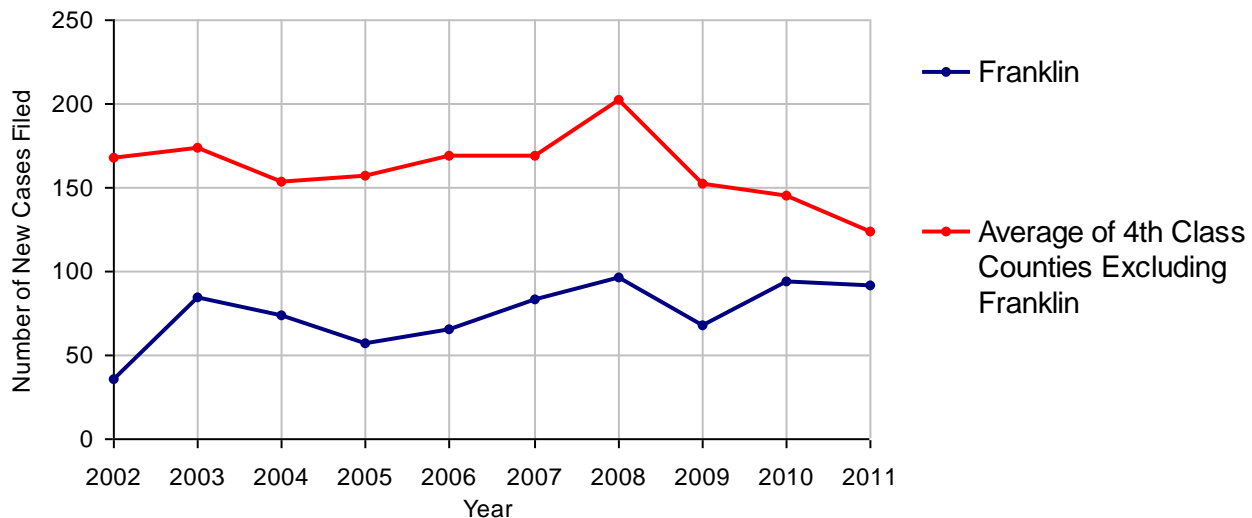
2011 Juvenile Dependency - Active Dependent Inventory



	Abuse/ Neglect	Status Offenses	Total
Cases Pending 1/1/2011	4	0	4
New Petitions Filed in 2011	63	29	92
Other	0	1	1
Total Petitions Available for Processing	67	30	97
Processed by:			
Adjudicated Dependent			
Judge	9	0	9
Master	36	22	58
Adjudicated NOT Dependent			
Judge	1	0	1
Master	1	0	1
Withdrawn/Dismissed/Inactive	13	5	18
Other	2	2	4
Total Petitions Processed	62	29	91
Cases Pending 12/31/2011	5	1	6

Data provided by CPCMS

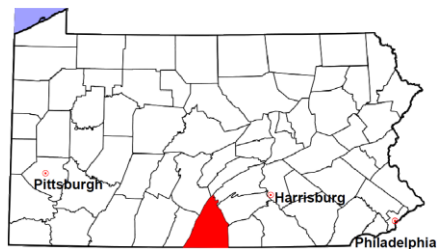
Abuse/Neglect and Status Offenses New Cases Filed, 2002-2011



Note: Dependency data for 2002-2010 were collected manually. Dependency data for 2011 were provided by CPCMS.

Franklin County

2011 Population Estimate: 150,811
 Class of County: 4th
 No. of Common Pleas Court Judgeships: 5
 (Franklin and Fulton combined)



2011 Juvenile Dependency - Adjudicated Dependent Inventory



	Abuse/ Neglect	Status Offenses	Total	
Cases Pending 1/1/2011	56	11	67	
New Adjudicated Dependent Cases	45	22	67	
Other	1	1	2	
Total Adjudicated Dependent Cases	102	34	136	
<u>Court Supervision Terminated:</u>				
Family Reunification	20	11	31	51.7%
Adoption	7	0	7	11.7%
Placement with a Relative/Guardian	5	0	5	8.3%
Aged Out	10	1	11	18.3%
Other Permanency Outcomes*	1	3	4	6.7%
Other**	1	1	2	3.3%
Total Adjudicated Dependent Cases Terminated	44	16	60	100.0%
Cases Pending 12/31/2011	58	18	76	

Data provided by CPCMS

* Other Permanency Outcomes include: adjudicated delinquent, death due to natural causes, emancipation, permanent living arrangement, and parent has come forward.

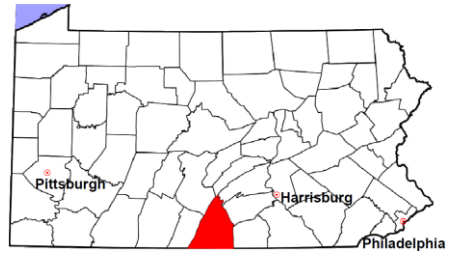
** Other includes cases where Court Supervision is terminated due to transfer out of jurisdiction, withdrawal and administrative closures.

Franklin County

2011 Population Estimate: 150,811

Class of County: 4th

No. of Common Pleas Court Judgeships: 5
(Franklin and Fulton combined)

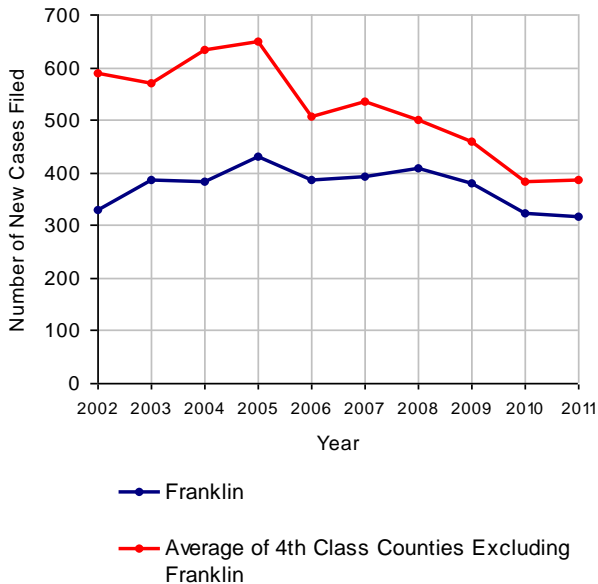


2011 Juvenile Delinquency

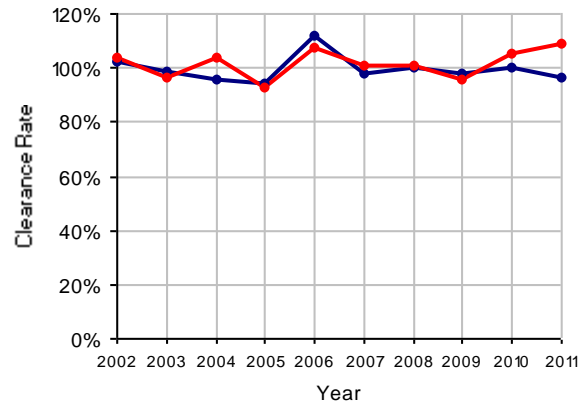
No. of Cases

Cases Pending 1/1/2011	24
New Cases Filed in 2011	318
Cases Available for Processing	342
Processed By:	
Judge	167 54.6%
Non-Judicial Officer	101 33.0%
Other	38 12.4%
Cases Processed	306 100.0%
Cases Pending 12/31/2011	36

Juvenile Delinquency New Cases Filed, 2002-2011

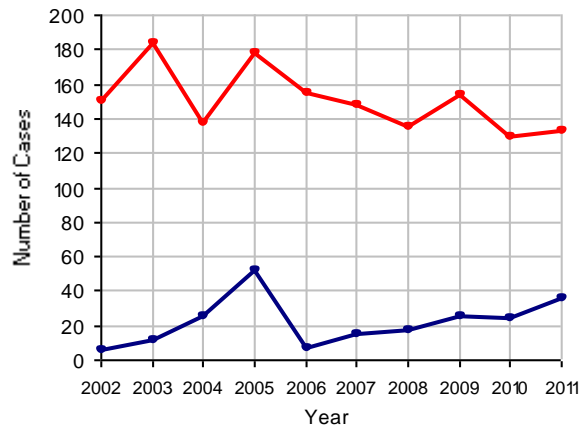


Clearance Rate, 2002-2011



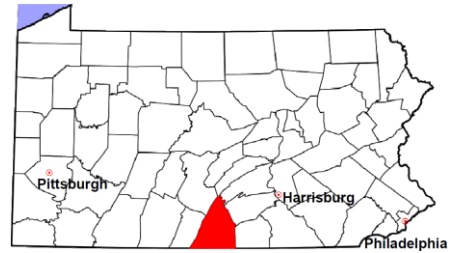
Note: Clearance Rate = Cases Processed / New Cases Filed

Cases Pending at the End of Year, 2002-2011



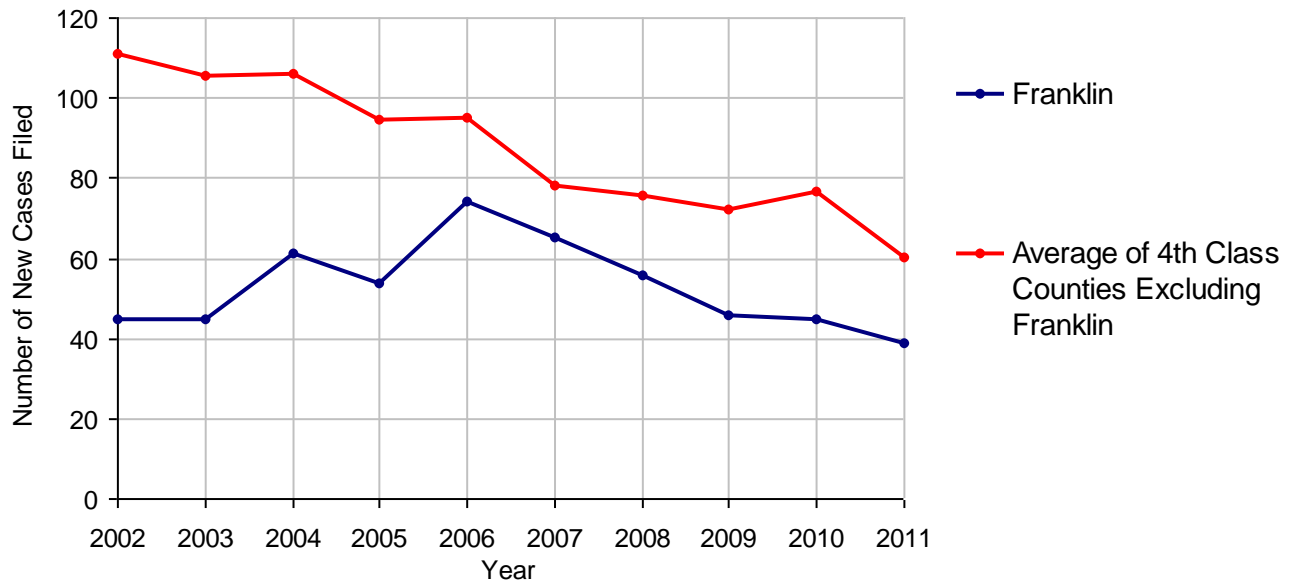
Franklin County

2011 Population Estimate: 150,811
 Class of County: 4th
 No. of Common Pleas Court Judgeships: 5
 (Franklin and Fulton combined)



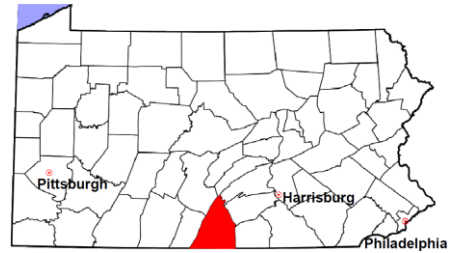
2011 Accounts	No. of Cases
Cases Pending 1/1/2011	23
New Cases Filed in 2011	39
Cases Available for Processing	62
Processed By:	
Contested before a Judge	4 8.7%
Contested before a Non-judicial Officer	0
Uncontested	41 89.1%
Other	1 2.2%
Cases Processed	46 100.0%
Cases Pending 12/31/2011	16

Accounts New Cases Filed, 2002-2011



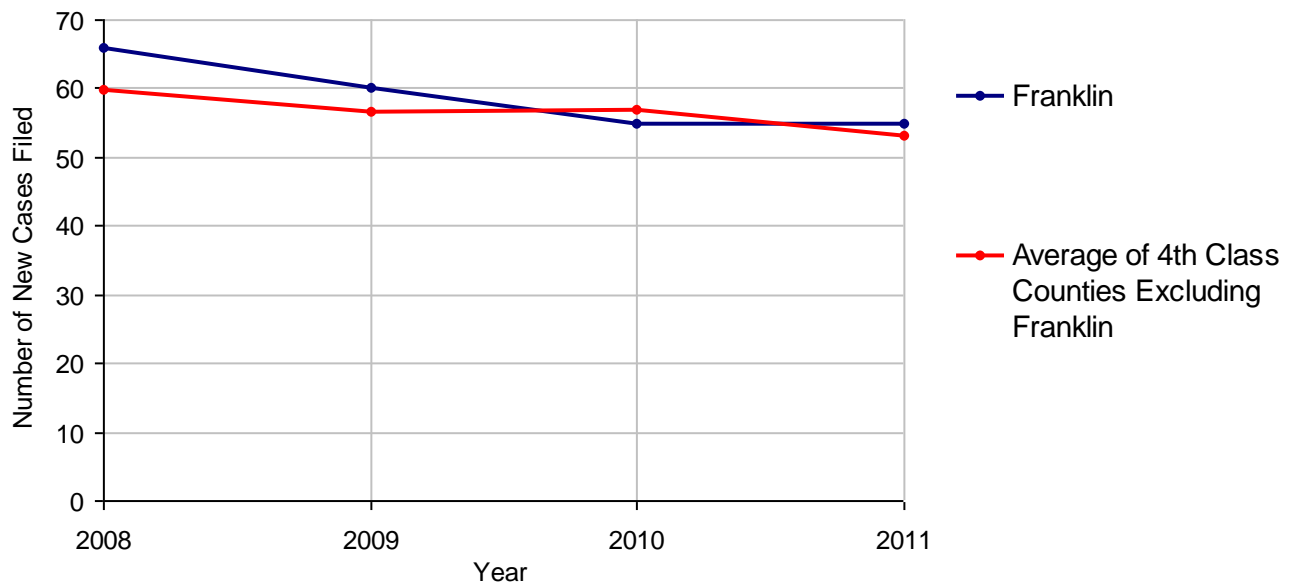
Franklin County

2011 Population Estimate: 150,811
 Class of County: 4th
 No. of Common Pleas Court Judgeships: 5
 (Franklin and Fulton combined)



2011 Adoptions		No. of Cases	
Cases Pending 1/1/2011		7	
New Cases Filed in 2011		55	
Cases Available for Processing		62	
Processed By:			
Contested before a Judge	Granted	0	
	Denied	0	
Uncontested	Granted	50	98.0%
	Denied	0	
Other		1	2.0%
Cases Processed		51	100.0%
Cases Pending 12/31/2011		11	

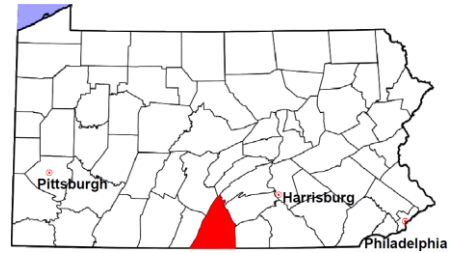
Adoptions New Cases Filed, 2008-2011



Note: Prior to 2008, each petition was counted as one new case, regardless of the number of children listed on the petition. Starting in 2008, each child listed on a petition is counted as a separate case. Therefore, statistics for the years since 2008 should not be compared to those for the years prior to 2008.

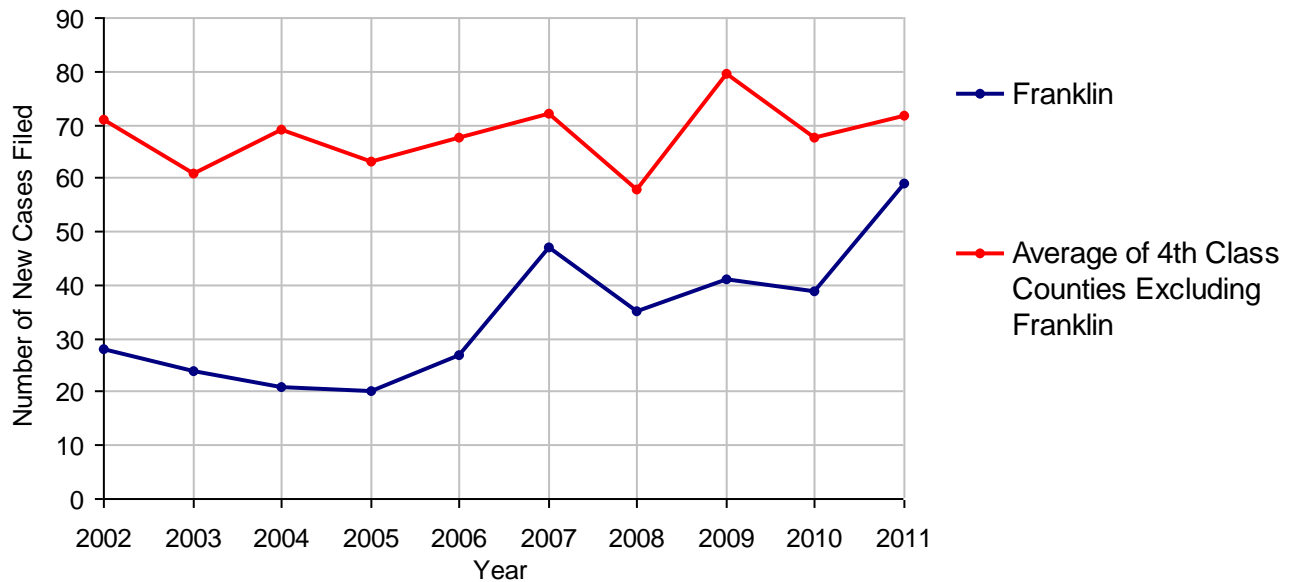
Franklin County

2011 Population Estimate: 150,811
 Class of County: 4th
 No. of Common Pleas Court Judgeships: 5
 (Franklin and Fulton combined)



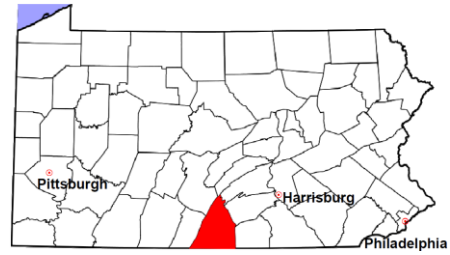
2011 Relinquishments/Terminations	No. of Cases	
Cases Pending 1/1/2011	13	
New Cases Filed in 2011	59	
Cases Available for Processing	72	
Processed By:		
Contested before a Judge	5	9.4%
Uncontested	45	84.9%
Other	3	5.7%
Cases Processed	53	100.0%
Cases Pending 12/31/2011	19	

Relinquishments/Terminations New Cases Filed, 2002-2011



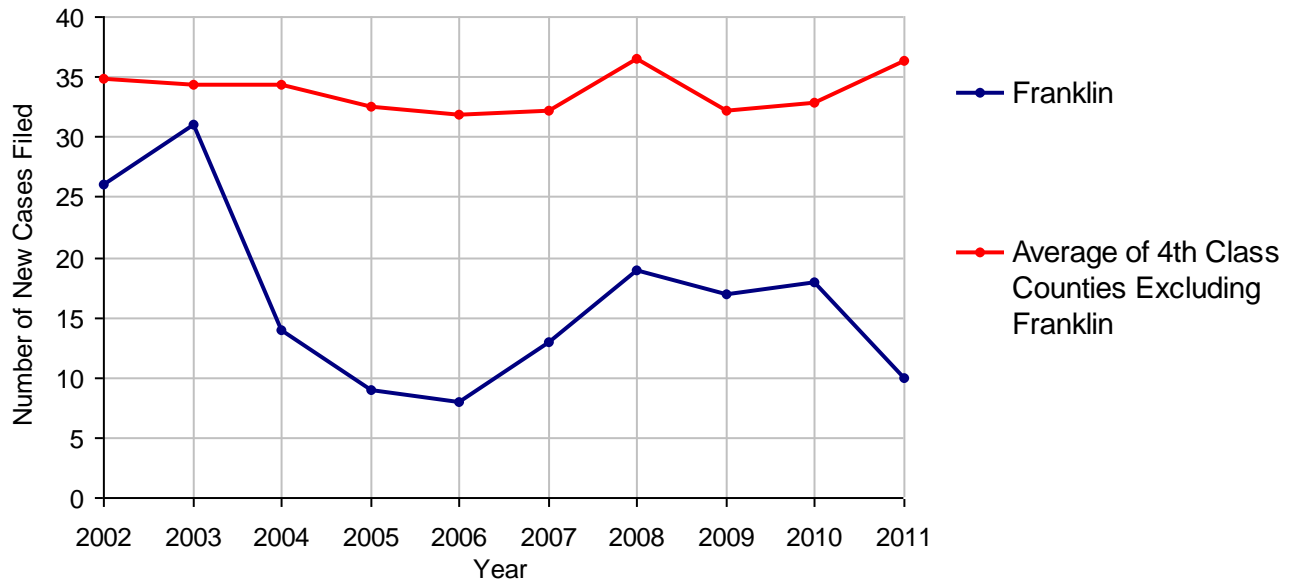
Franklin County

2011 Population Estimate: 150,811
 Class of County: 4th
 No. of Common Pleas Court Judgeships: 5
 (Franklin and Fulton combined)



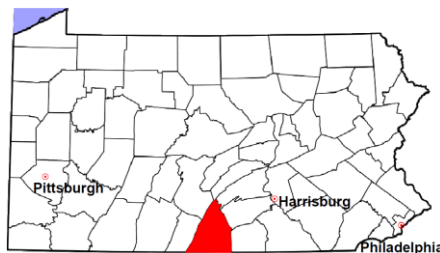
2011 Appointment of Guardians		No. of Cases
Cases Pending 1/1/2011		2
New Cases Filed in 2011		10
Cases Available for Processing		12
Processed By:		
Contested before a Judge	1	10.0%
Uncontested	7	70.0%
Other	2	20.0%
Cases Processed	10	100.0%
Cases Pending 12/31/2011		2

Appointment of Guardians New Cases Filed, 2002-2011



Franklin County

2011 Population Estimate: 150,811
Class of County: 4th
No. of Common Pleas Court Judgeships: 5
(Franklin and Fulton combined)



2011 Jury Activity and Performance Measures

A. Juror Days	1,786	
B. Number Sent to Voir Dire	4,251	
Voir Dire Attendance Rate (B/A * 100)		238.0%
C. Number of Jurors Selected	896	
Juror Selection Rate (C/B * 100)		21.1%

Note: In mid-2011, AOPC began utilizing the National Center for State Courts' Jury Managers' Toolbox for collecting jury data. This has resulted in limited jury performance measures being reported for 2011. Additional data will be available in 2012.