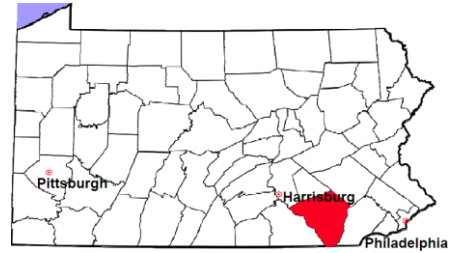


Lancaster County

2011 Population Estimate: 523,594
 Class of County: 3rd
 No. of Common Pleas Court Judgeships: 15



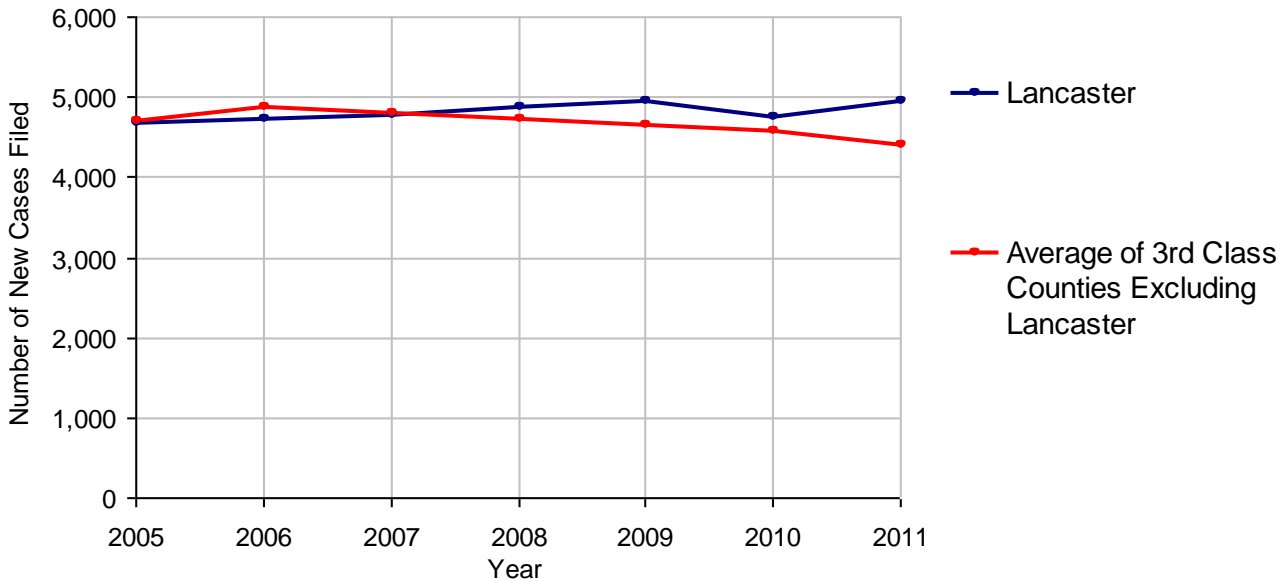
2011 Criminal	No. of Cases
Cases Pending 1/1/2011	4,086
New Cases Filed in 2011	4,950
Reopened Cases	269
Cases Available for Disposition	9,305
Disposed by:	
Withdrawn/Dismissed	208 4.1%
ARD	934 18.2%
Guilty Plea	3,675 71.8%
Non-Jury Trial	27 0.5%
Jury Trial	52 1.0%
Inactive	176 3.4%
Other	46 0.9%
Total Cases Disposed	5,118 100.0%
Cases Pending 12/31/2011	4,187
Cases Awaiting Sentencing	49



Age of Pending Cases as of 12/31/2011		
0-60 Days	1,045	25.0%
61-120 Days	596	14.2%
121-180 Days	612	14.6%
181-240 Days	416	9.9%
241-300 Days	311	7.4%
301-360 Days	286	6.8%
Over 360 Days	921	22.0%
Total	4,187	100.0%

Data provided by CPCMS

Criminal New Cases Filed, 2005-2011

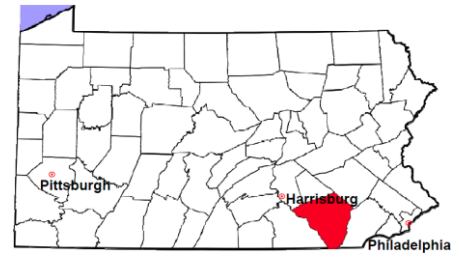


Lancaster County

2011 Population Estimate: 523,594

Class of County: 3rd

No. of Common Pleas Court Judgeships: 15



2011 Criminal - New Cases by Case Type



Case Type	Felony	Misdemeanor	Summary /Ungraded	Total
Person	302	382	1	685
Property	794	817	2	1,613
Drug	327	132	0	459
Weapon	72	25	0	97
Public Order	155	268	1	424
Motor Vehicle - DWI/DUI	0	1,646	0	1,646
Motor Vehicle - Other	7	18	0	25
Other	0	1	0	1
Total	1,657	3,289	4	4,950
	33.5%	66.4%	0.1%	100.0%

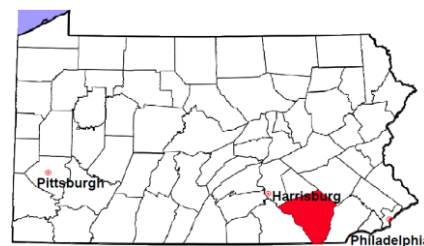
Data provided by CPCMS

Lancaster County

2011 Population Estimate: 523,594

Class of County: 3rd

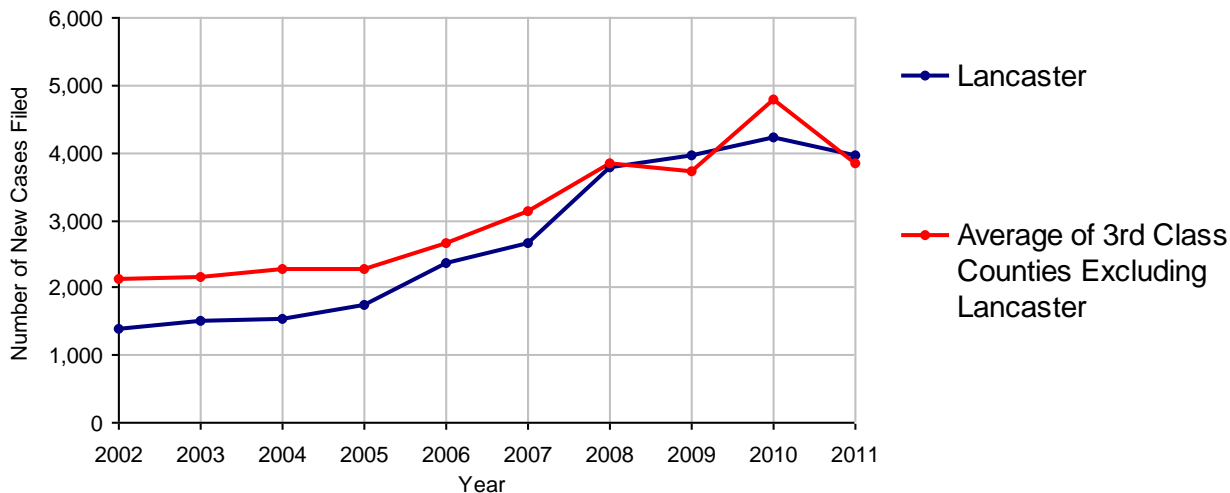
No. of Common Pleas Court Judgeships: 15



2011 Civil	Civil Action	Other	Total
Cases Pending 1/1/2011	1,438	642	2,080
Docketed Cases	2,610	1,347	3,957
Arbitration Appeals	10	2	12
Transferred In	0	0	0
Returned to Active	0	0	0
Cases Available for Processing	4,058	1,991	6,049
Disposed By:			
Default Judgments	863	332	1,195
Cases Decided by Arbitration Board	24	6	30
Dispositive Motions	10	9	19
Settlements	5	4	9
Moved to Inactive Status	58	286	344
Transferred/Withdrawn	2	0	2
Pa.R.J.A. 1901 Administrative Purge	0	0	0
Other	14	1	15
Jury Trial	8	0	8
Non-Jury Trial	2	1	3
Total Cases Disposed	986	639	1,625
Cases Pending 12/31/2011	3,072	1,352	4,424

Age of Pending Cases as of 12/31/2011 (Civil Action Only)		
0-6 months	1,215	39.6%
7-12 months	1,028	33.5%
13-18 months	829	27.0%
19-24 months	0	
25-30 months	0	
31-36 months	0	
37-42 months	0	
43-48 months	0	
49-54 months	0	
55-60 months	0	
61-66 months	0	
67-72 months	0	
Over 72 months	0	
Total	3,072	100.0%

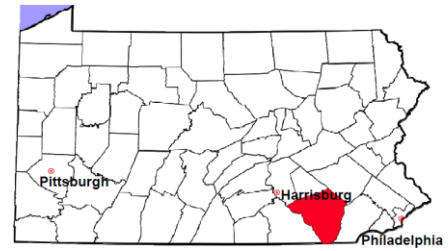
Docketed Cases, 2002-2011



Note: Prior to June 2010, docketed cases under the "Other" category were not reported. The reporting of these cases starting from June 2010 may contribute to an increase in docketed cases from 2009 to 2010.

Lancaster County

2011 Population Estimate: 523,594
 Class of County: 3rd
 No. of Common Pleas Court Judgeships: 15



2011 Civil - Docketed Cases Listed by Case Type

TORT (does not include mass tort)

Intentional	11
Malicious Prosecution	0
Motor Vehicle	361
Nuisance	0
Premise Liability	81
Product Liability	11
Slander/Libel/Defamation	0
Other	59

MASS TORT

Asbestos	1
Tobacco	0
Toxic Tort - DES	0
Toxic Tort - Implant	0
Toxic Waste	0
Other	1

PROFESSIONAL LIABILITY

Dental	2
Legal	4
Medical Malpractice	26
Other	14

CONTRACT

(does not include judgments)

Buyer Plaintiff	22
Debt Collection:	
Credit Card	1,184
Debt Collection: Other	659
Employment Dispute:	
Discrimination	2
Employment Dispute: Other	11
Other	126

REAL PROPERTY

Ejectment*	103
Eminent Domain/ Condemnation*	31
Ground Rent	2
Landlord/Tenant Dispute	33
Mortgage Forclosures:	
Residential*	743
Commercial*	4
Partition of Real Property*	5
Quiet Title*	15
Other*	92

CIVIL APPEALS

Administrative Agencies

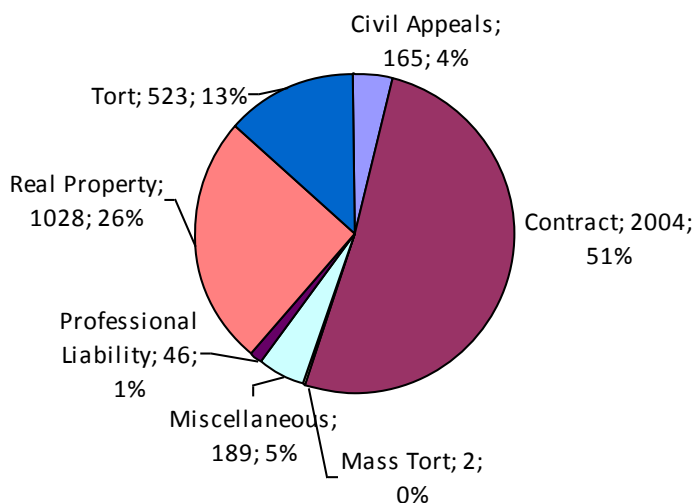
Board of Assessment*	24
Board of Elections*	0
Dept. of Transportation*	72
Zoning Board*	4
Statutory Appeal - Other*	7
Other*	58

MISCELLANEOUS

Common Law/ Statutory Arbitration*	2
Declaratory Judgment*	8
Mandamus*	1
Non-Domestic Relations Restraining Order*	1
Quo Warranto*	1
Replevin*	27
Other*	149

TOTAL DOCKETED CASES:
3,957

* Civil Other



Of the Docketed Cases:

Pro Se Filings:	35	0.9%
Class Action Suits:	0	
MDJ Appeals:	85	2.1%

Lancaster County

2011 Population Estimate: 523,594
 Class of County: 3rd
 No. of Common Pleas Court Judgeships: 15



2011 Protection From Abuse

**No. of
Petitions**

Cases Pending 1/1/2011 228

New Cases Filed in 2011 1,148

Of these, Petitions Requesting Temporary Orders: 1,148 (100.0%)

Temporary Orders DENIED: 221 (19.3%), Temporary Orders GRANTED: 927 (80.7%)

Cases Available for Processing 1,376

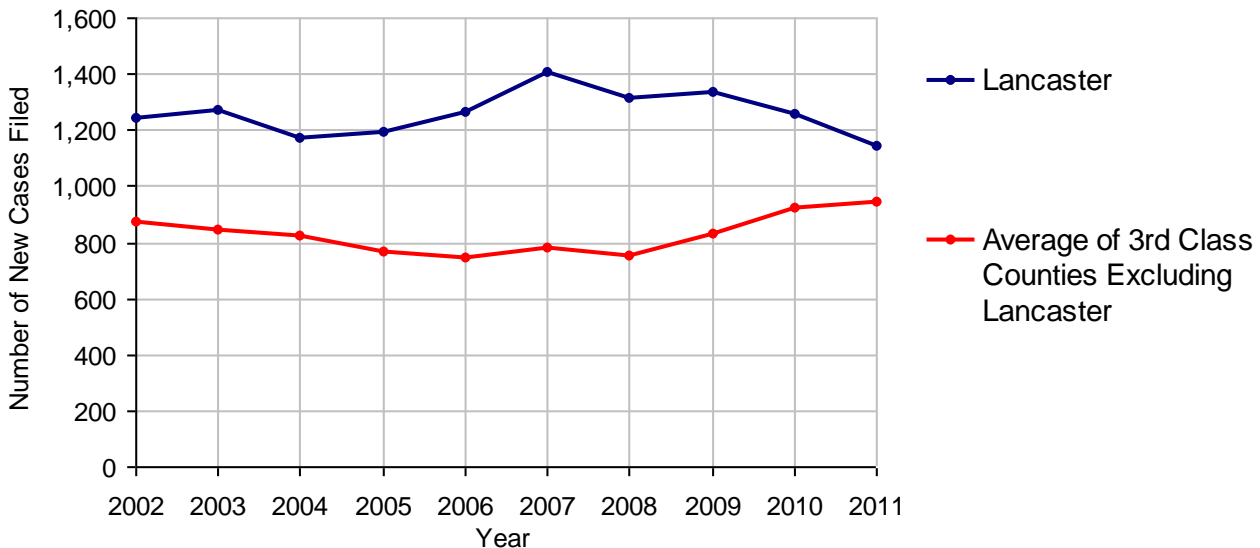
Processed By:

Temporary Order DENIED After Ex Parte Hearing and No Evidentiary Hearing Scheduled	0	
Temporary Order DISMISSED After Evidentiary Hearing and No Final Order Entered	0	
Final Order DENIED After Evidentiary Hearing Before a Judge	40	3.5%
Final Order GRANTED After Evidentiary Hearing Before a Judge	55	4.8%
Plaintiff Did Not Appear For Evidentiary Hearing	204	17.7%
Final Order by STIPULATION OR AGREEMENT Between the Parties	236	20.5%
Petition WITHDRAWN by Plaintiff	618	53.6%
TRANSFERRED to Another Jurisdiction	0	
DECEASED Party	1	0.1%
Other	0	

Cases Processed 1,154 100.0%

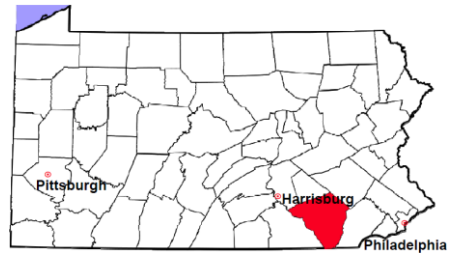
Cases Pending 12/31/2011 222

PFA New Cases Filed, 2002-2011

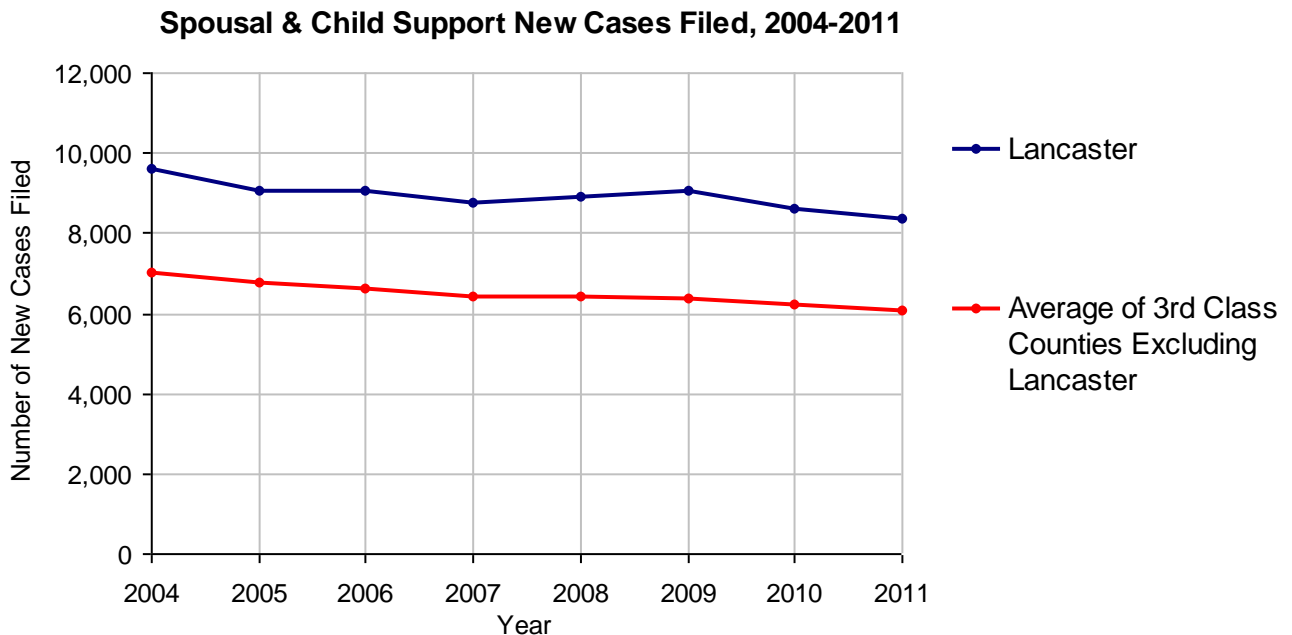


Lancaster County

2011 Population Estimate: 523,594
 Class of County: 3rd
 No. of Common Pleas Court Judgeships: 15



2011 Spousal & Child Support	No. of Petitions	
Cases Pending 1/1/2011	1,916	
New Cases Filed in 2011	8,385	
Dockets Transferred In (+)	117	
Dockets Transferred Out (-)	156	
Cases Available for Processing	10,262	
Processed By:		
Judge	714	8.5%
Intake Officer	7,690	91.5%
Hearing Officer	0	
Other	0	
Cases Processed	8,404	100.0%
Cases Pending 12/31/2011	1,858	

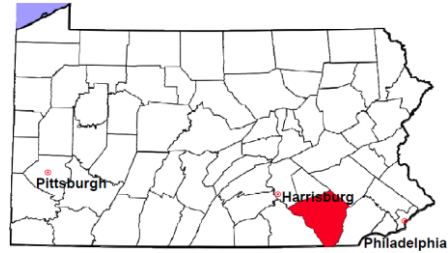


Lancaster County

2011 Population Estimate: 523,594

Class of County: 3rd

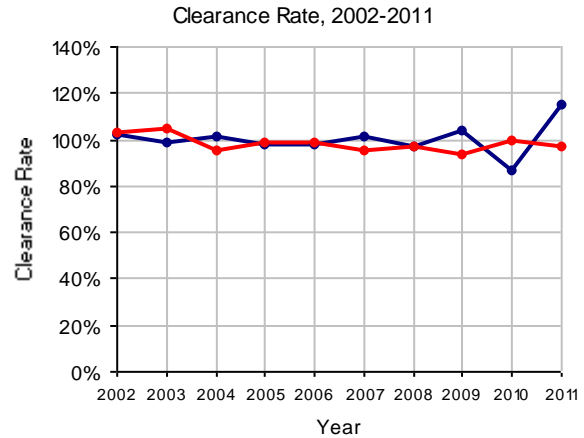
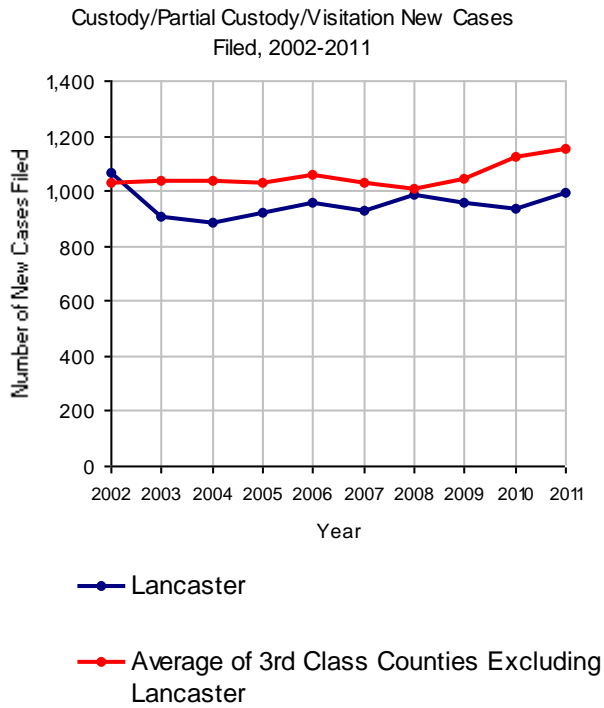
No. of Common Pleas Court Judgeships: 15



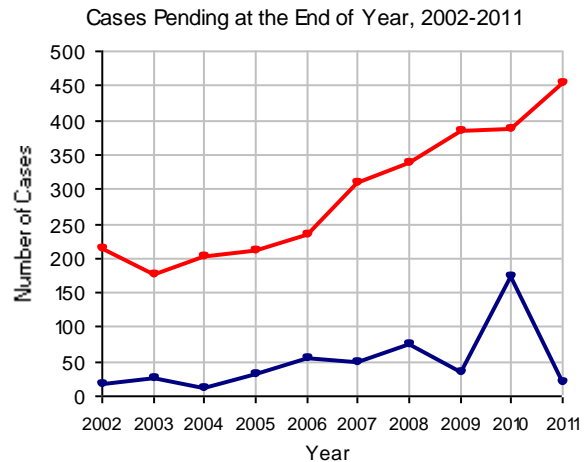
2011 Custody/Partial Custody/Visitation

No. of
Petitions

Cases Pending 1/1/2011	172
New Cases Filed in 2011	992
Cases Available for Processing	1,164
Processed By:	
Judge	233 20.4%
Non-Judicial Officer	769 67.3%
Other	141 12.3%
Cases Processed	1,143 100.0%
Cases Pending 12/31/2011	21

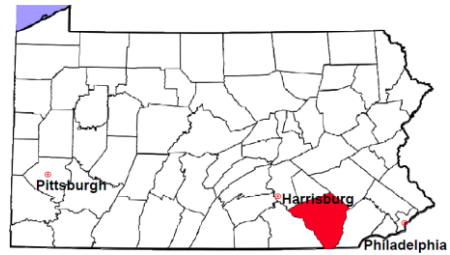


Note: Clearance Rate = Cases Processed / New Cases Filed



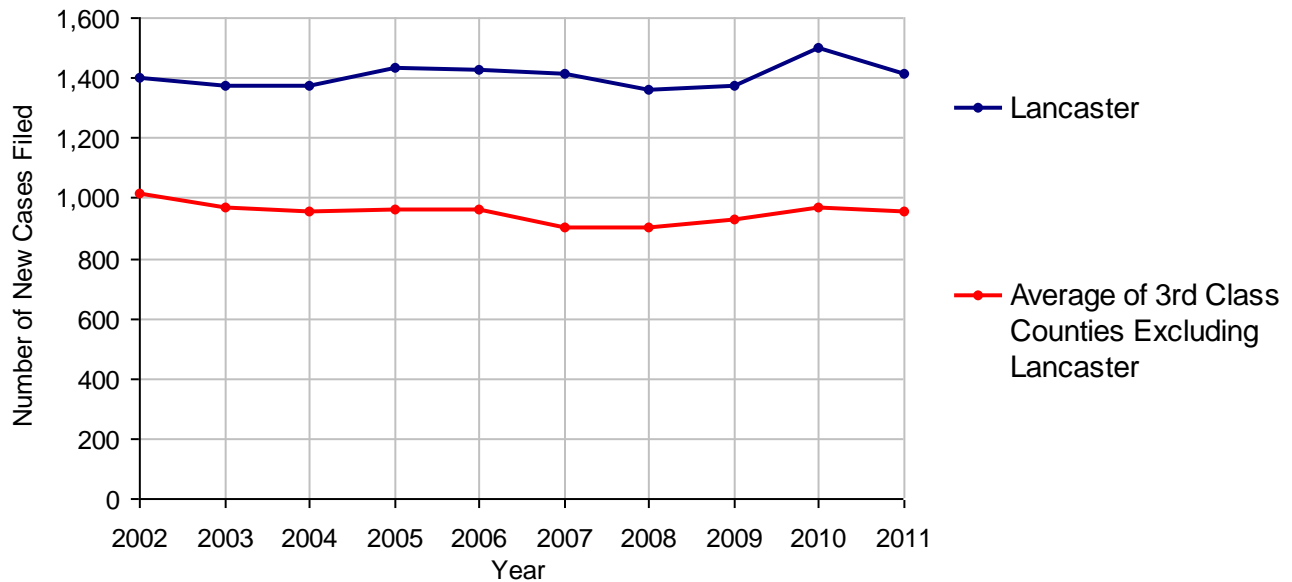
Lancaster County

2011 Population Estimate: 523,594
 Class of County: 3rd
 No. of Common Pleas Court Judgeships: 15



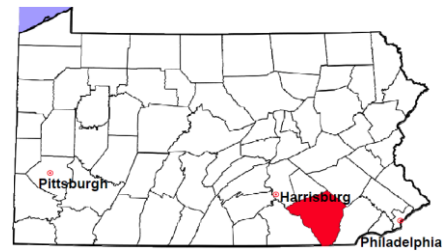
2011 Divorce	No. of Petitions	
Cases Pending 1/1/2011	3,229	
New Cases Filed in 2011	1,411	
Cases Available for Processing	4,640	
Processed By:		
Contested Before a Judge	0	
Contested Before a Master	6	0.4%
Uncontested	1,313	87.7%
Other	178	11.9%
Cases Processed	1,497	100.0%
Cases Pending 12/31/2011	3,143	

Divorce New Cases Filed, 2002-2011



Lancaster County

2011 Population Estimate: 523,594
 Class of County: 3rd
 No. of Common Pleas Court Judgeships: 15



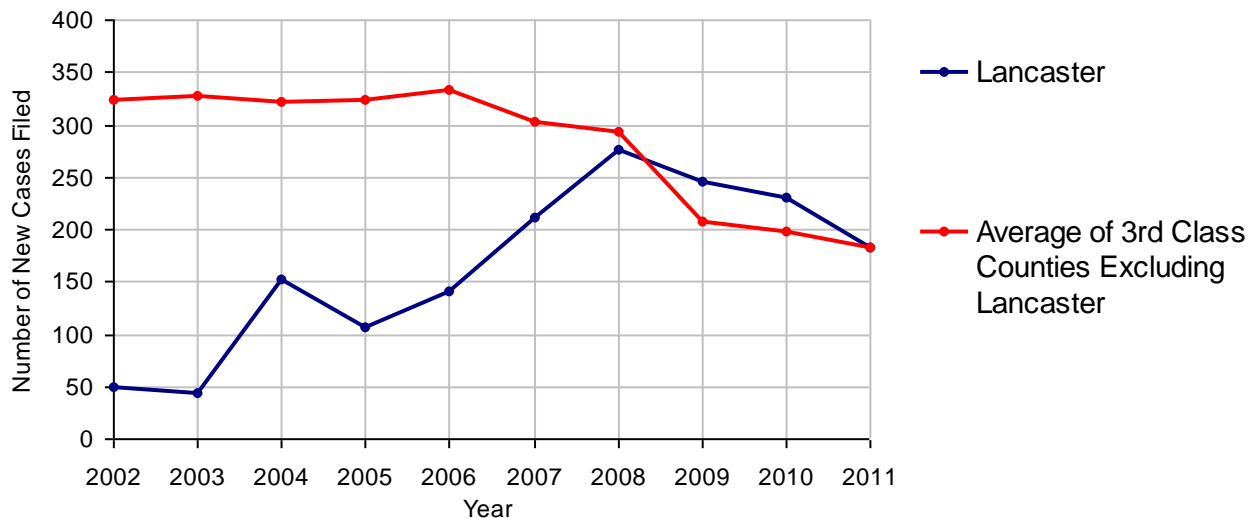
2011 Juvenile Dependency - Active Dependent Inventory



	Abuse/ Neglect	Status Offenses	Total
Cases Pending 1/1/2011	49	0	49
New Petitions Filed in 2011	181	2	183
Other	4	0	4
Total Petitions Available for Processing	234	2	236
Processed by:			
Adjudicated Dependent			
Judge	168	2	170
Master	0	0	0
Adjudicated NOT Dependent			
Judge	13	0	13
Master	0	0	0
Withdrawn/Dismissed/Inactive	2	0	2
Other	10	0	10
Total Petitions Processed	193	2	195
Cases Pending 12/31/2011	41	0	41

Data provided by CPCMS

Abuse/Neglect and Status Offenses New Cases Filed, 2002-2011



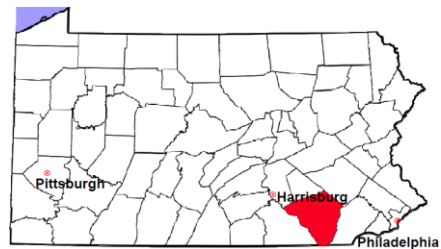
Note: Dependency data for 2002-2010 were collected manually. Dependency data for 2011 were provided by CPCMS.

Lancaster County

2011 Population Estimate: 523,594

Class of County: 3rd

No. of Common Pleas Court Judgeships: 15



2011 Juvenile Dependency - Adjudicated Dependent Inventory

	Abuse/ Neglect	Status Offenses	Total	
Cases Pending 1/1/2011	529	0	529	
New Adjudicated Dependent Cases	168	2	170	
Other	19	0	19	
Total Adjudicated Dependent Cases	716	2	718	
<u>Court Supervision Terminated:</u>				
Family Reunification	28	0	28	12.5%
Adoption	82	0	82	36.6%
Placement with a Relative/Guardian	52	0	52	23.2%
Aged Out	34	0	34	15.2%
Other Permanency Outcomes*	5	0	5	2.2%
Other**	23	0	23	10.3%
Total Adjudicated Dependent Cases Terminated	224	0	224	100.0%
Cases Pending 12/31/2011	492	2	494	

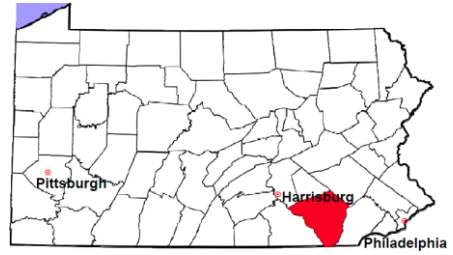
Data provided by CPCMS

* Other Permanency Outcomes include: adjudicated delinquent, death due to natural causes, emancipation, permanent living arrangement, and parent has come forward.

** Other includes cases where Court Supervision is terminated due to transfer out of jurisdiction, withdrawal and administrative closures.

Lancaster County

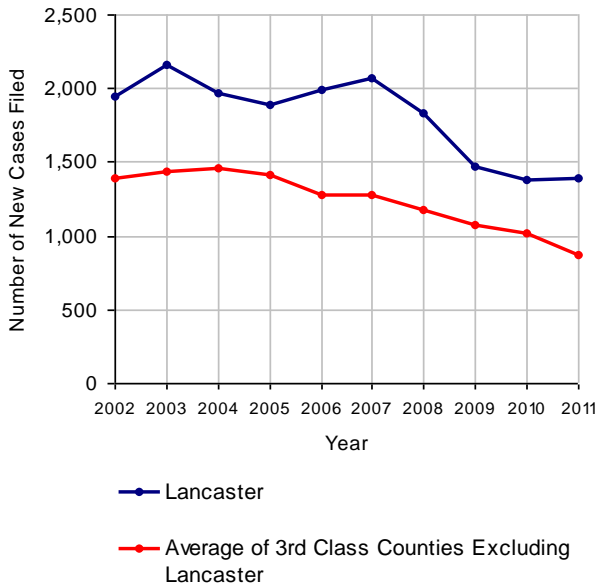
2011 Population Estimate: 523,594
 Class of County: 3rd
 No. of Common Pleas Court Judgeships: 15



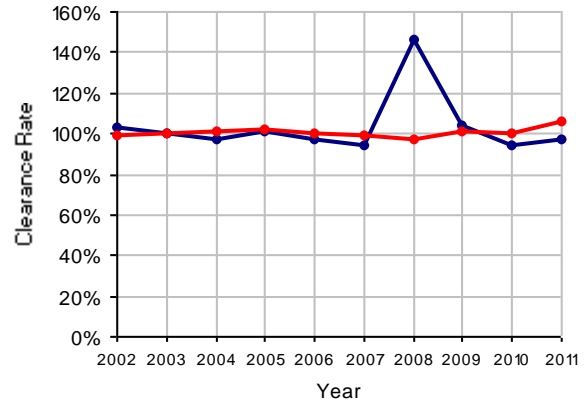
2011 Juvenile Delinquency

	No. of Cases
Cases Pending 1/1/2011	374
New Cases Filed in 2011	1,394
Cases Available for Processing	1,768
Processed By:	
Judge	848 62.9%
Non-Judicial Officer	490 36.3%
Other	11 0.8%
Cases Processed	1,349 100.0%
Cases Pending 12/31/2011	419

Juvenile Delinquency New Cases Filed, 2002-2011

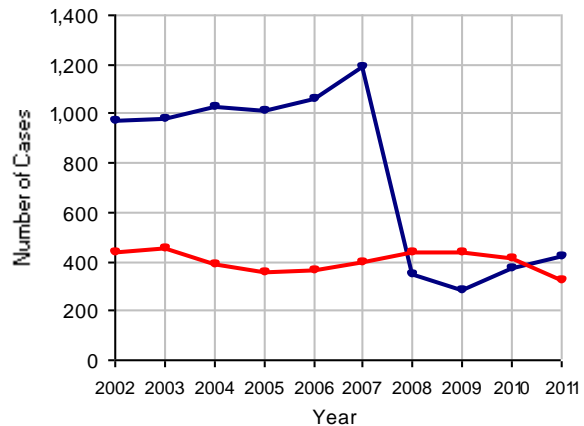


Clearance Rate, 2002-2011



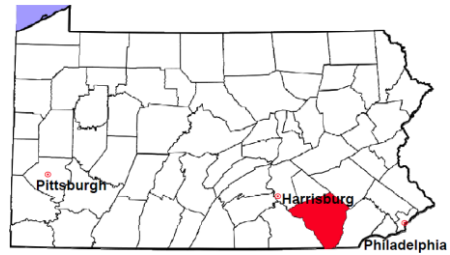
Note: Clearance Rate = Cases Processed / New Cases Filed

Cases Pending at the End of Year, 2002-2011



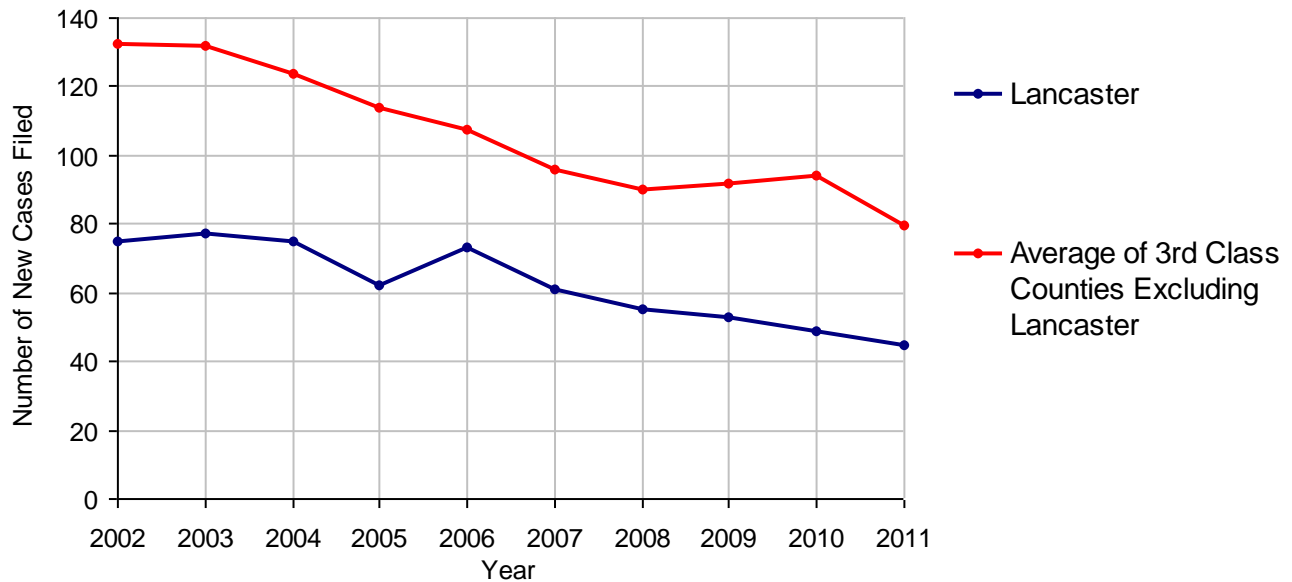
Lancaster County

2011 Population Estimate: 523,594
 Class of County: 3rd
 No. of Common Pleas Court Judgeships: 15



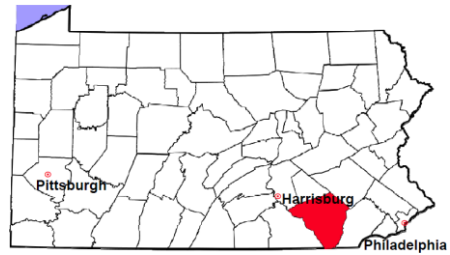
2011 Accounts	No. of Cases
Cases Pending 1/1/2011	66
New Cases Filed in 2011	45
Cases Available for Processing	111
Processed By:	
Contested before a Judge	5 9.8%
Contested before a Non-judicial Officer	0
Uncontested	35 68.6%
Other	11 21.6%
Cases Processed	51 100.0%
Cases Pending 12/31/2011	60

Accounts New Cases Filed, 2002-2011



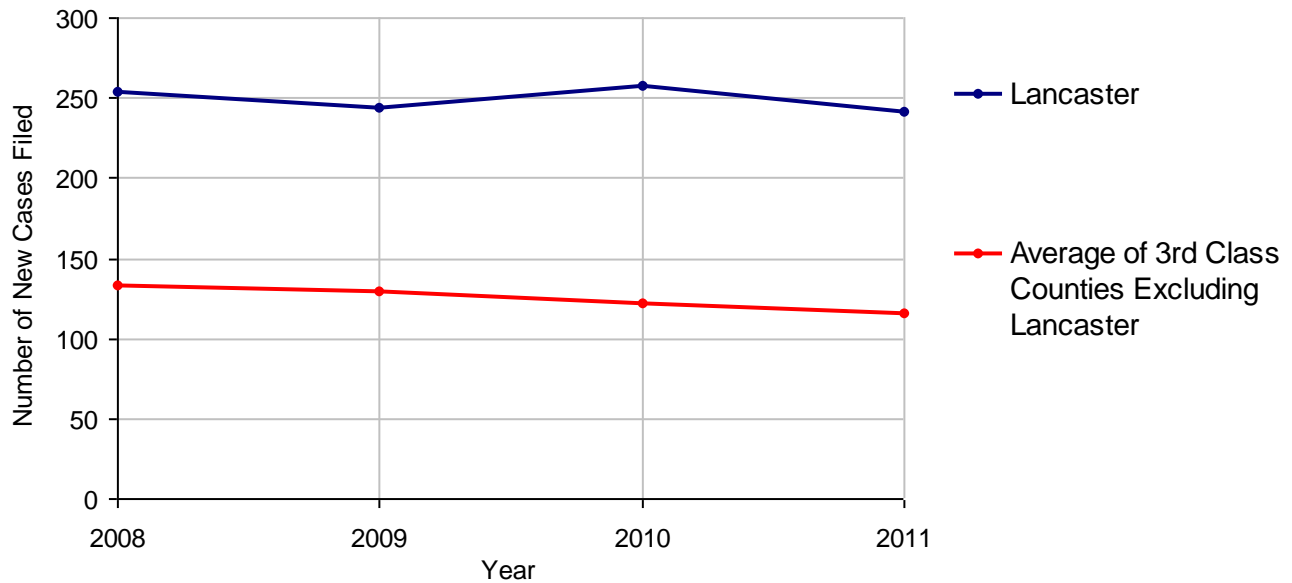
Lancaster County

2011 Population Estimate: 523,594
 Class of County: 3rd
 No. of Common Pleas Court Judgeships: 15



2011 Adoptions		No. of Cases	
Cases Pending 1/1/2011		68	
New Cases Filed in 2011		242	
Cases Available for Processing		310	
Processed By:			
Contested before a Judge	Granted	5	2.0%
	Denied	0	
Uncontested	Granted	235	96.3%
	Denied	0	
Other		4	1.6%
Cases Processed		244	100.0%
Cases Pending 12/31/2011		66	

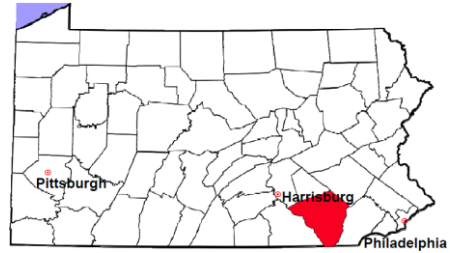
Adoptions New Cases Filed, 2008-2011



Note: Prior to 2008, each petition was counted as one new case, regardless of the number of children listed on the petition. Starting in 2008, each child listed on a petition is counted as a separate case. Therefore, statistics for the years since 2008 should not be compared to those for the years prior to 2008.

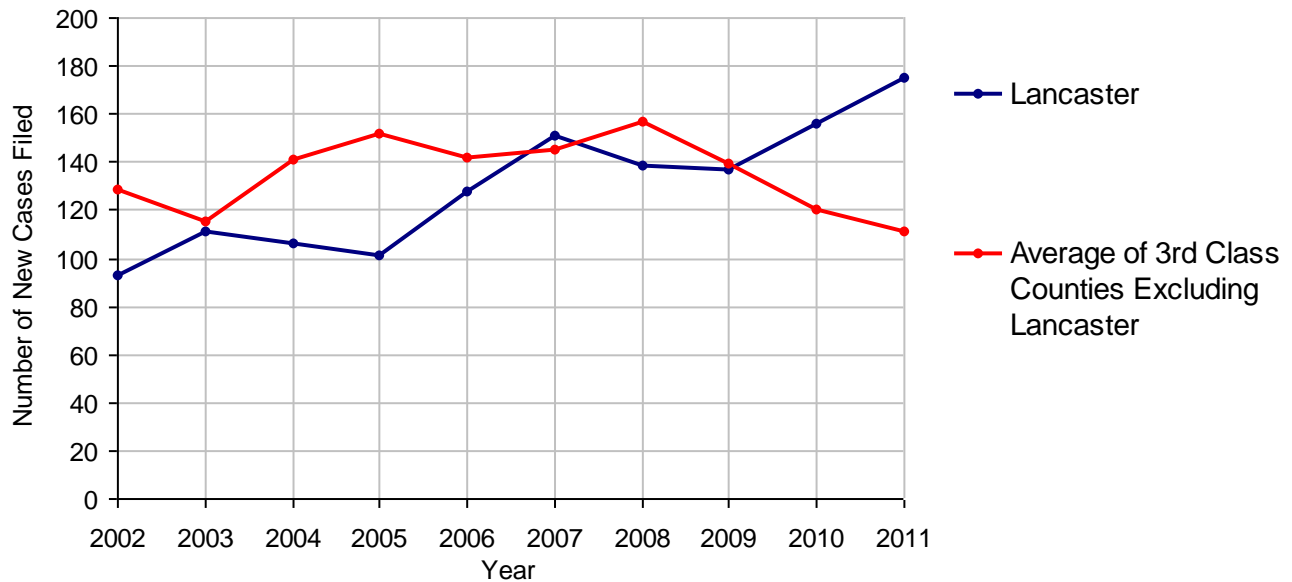
Lancaster County

2011 Population Estimate: 523,594
 Class of County: 3rd
 No. of Common Pleas Court Judgeships: 15



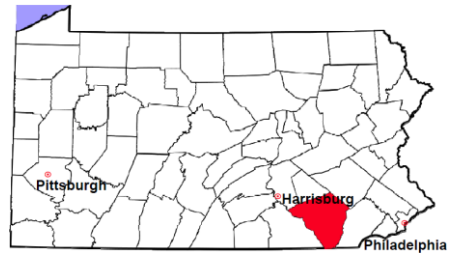
2011 Relinquishments/Terminations	No. of Cases
Cases Pending 1/1/2011	84
New Cases Filed in 2011	175
Cases Available for Processing	259
Processed By:	
Contested before a Judge	43 25.3%
Uncontested	123 72.4%
Other	4 2.4%
Cases Processed	170 100.0%
Cases Pending 12/31/2011	89

Relinquishments/Terminations New Cases Filed, 2002-2011



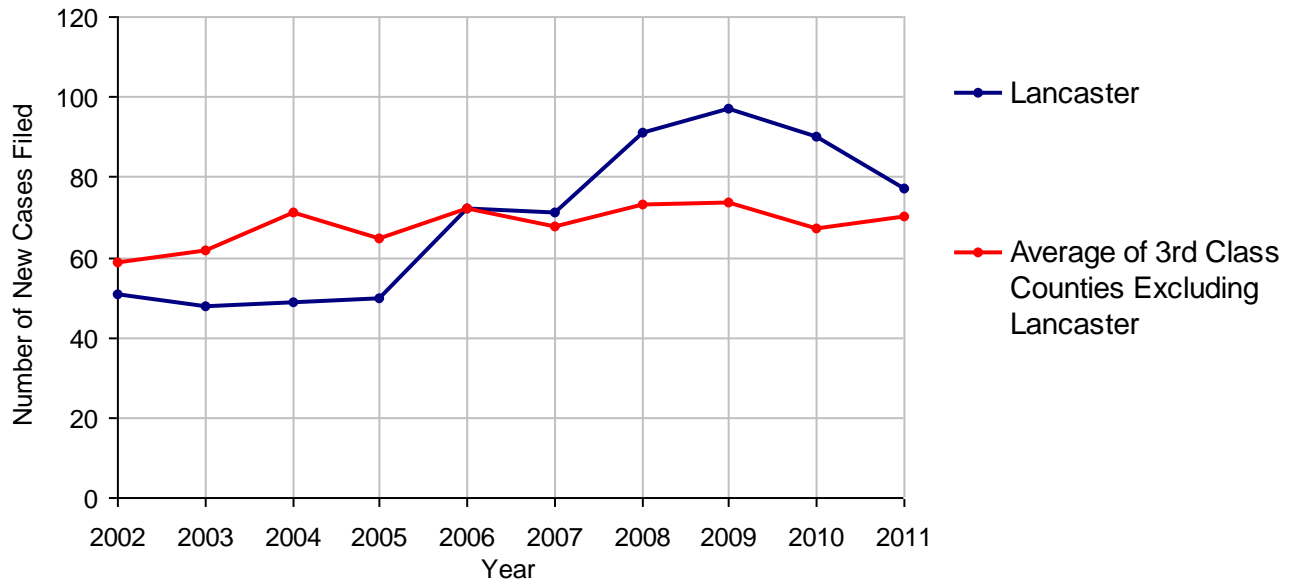
Lancaster County

2011 Population Estimate: 523,594
 Class of County: 3rd
 No. of Common Pleas Court Judgeships: 15



2011 Appointment of Guardians	No. of Cases
Cases Pending 1/1/2011	18
New Cases Filed in 2011	77
Cases Available for Processing	95
Processed By:	
Contested before a Judge	22 32.8%
Uncontested	39 58.2%
Other	6 9.0%
Cases Processed	67 100.0%
Cases Pending 12/31/2011	28

Appointment of Guardians New Cases Filed, 2002-2011

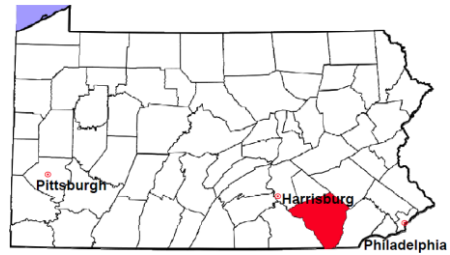


Lancaster County

2011 Population Estimate: 523,594

Class of County: 3rd

No. of Common Pleas Court Judgeships: 15



2011 Jury Activity and Performance Measures

A. Juror Days	7,822
B. Number Sent to Voir Dire	2,981
Voir Dire Attendance Rate (B/A * 100)	38.1%
C. Number of Jurors Selected	816
Juror Selection Rate (C/B * 100)	27.4%

Note: In mid-2011, AOPC began utilizing the National Center for State Courts' Jury Managers' Toolbox for collecting jury data. This has resulted in limited jury performance measures being reported for 2011. Additional data will be available in 2012.