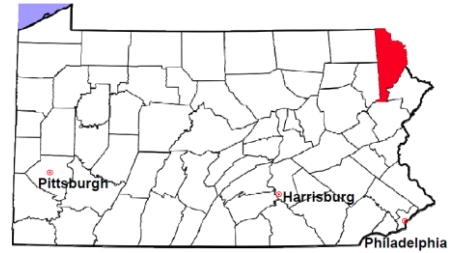


Wayne County

2011 Population Estimate: 53,004

Class of County: 6th

No. of Common Pleas Court Judgeships: 1



2011 Criminal	No. of Cases
---------------	--------------

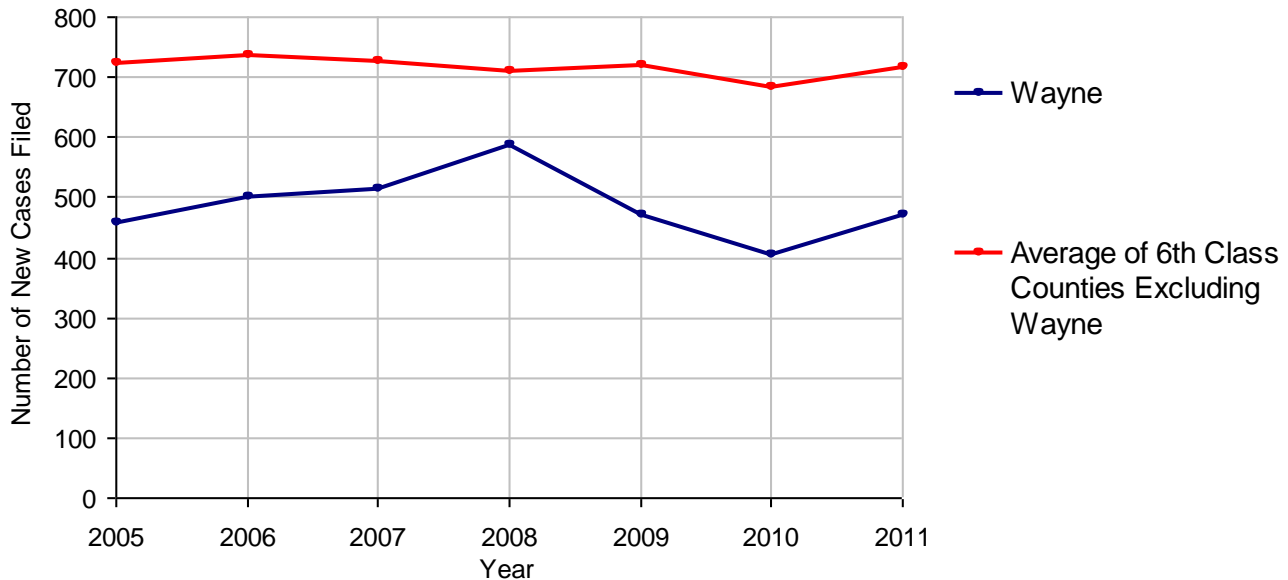
Cases Pending 1/1/2011	146
New Cases Filed in 2011	470
Reopened Cases	16
Cases Available for Disposition	632
Disposed by:	
Withdrawn/Dismissed	22 4.8%
ARD	63 13.8%
Guilty Plea	310 67.7%
Non-Jury Trial	6 1.3%
Jury Trial	11 2.4%
Inactive	7 1.5%
Other	39 8.5%
Total Cases Disposed	458 100.0%
Cases Pending 12/31/2011	174
Cases Awaiting Sentencing	28

Data provided by CPCMS



Age of Pending Cases as of 12/31/2011		
0-60 Days	60	34.5%
61-120 Days	63	36.2%
121-180 Days	12	6.9%
181-240 Days	18	10.3%
241-300 Days	5	2.9%
301-360 Days	2	1.1%
Over 360 Days	14	8.0%
Total	174	100.0%

Criminal New Cases Filed, 2005-2011

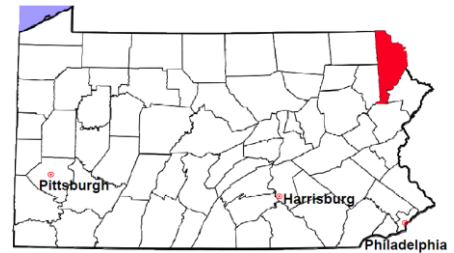


Wayne County

2011 Population Estimate: 53,004

Class of County: 6th

No. of Common Pleas Court Judgeships: 1



2011 Criminal - New Cases by Case Type



Case Type	Felony	Misdemeanor	Summary /Ungraded	Total
Person	37	42	0	79
Property	56	66	0	122
Drug	25	44	0	69
Weapon	5	5	0	10
Public Order	12	23	0	35
Motor Vehicle - DWI/DUI	0	153	0	153
Motor Vehicle - Other	0	1	1	2
Other	0	0	0	0
Total	135	334	1	470
	28.7%	71.1%	0.2%	100.0%

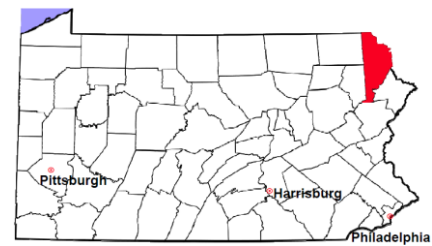
Data provided by CPCMS

Wayne County

2011 Population Estimate: 53,004

Class of County: 6th

No. of Common Pleas Court Judgeships: 1

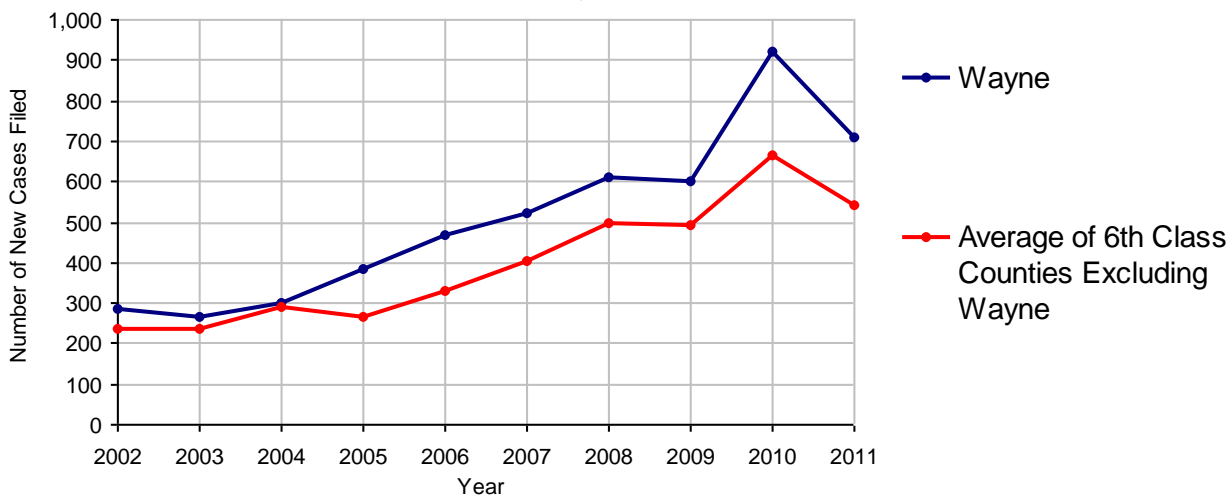


2011 Civil	Civil Action	Other	Total
Cases Pending 1/1/2011	443	289	732
Docketed Cases	436	275	711
Arbitration Appeals	4	4	8
Transferred In	5	1	6
Returned to Active	50	42	92
Cases Available for Processing	938	611	1,549
Disposed By:			
Default Judgments	214	155	369
Cases Decided by Arbitration Board	20	20	40
Dispositive Motions	26	42	68
Settlements	109	54	163
Moved to Inactive Status	12	7	19
Transferred/Withdrawn	108	36	144
Pa.R.J.A. 1901 Administrative Purge	0	0	0
Other	185	111	296
Jury Trial	3	0	3
Non-Jury Trial	8	12	20
Total Cases Disposed	685	437	1,122
Cases Pending 12/31/2011	253	174	427

Age of Pending Cases as of 12/31/2011 (Civil Action Only)

0-6 months	156	61.7%
7-12 months	52	20.6%
13-18 months	27	10.7%
19-24 months	8	3.2%
25-30 months	5	2.0%
31-36 months	3	1.2%
37-42 months	1	0.4%
43-48 months	0	
49-54 months	0	
55-60 months	0	
61-66 months	0	
67-72 months	0	
Over 72 months	1	0.4%
Total	253	100.0%

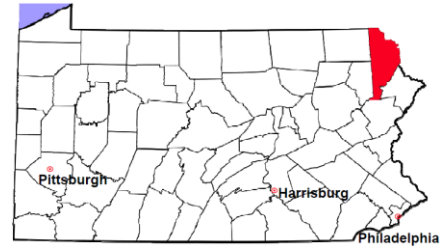
Docketed Cases, 2002-2011



Note: Prior to June 2010, docketed cases under the "Other" category were not reported. The reporting of these cases starting from June 2010 may contribute to an increase in docketed cases from 2009 to 2010.

Wayne County

2011 Population Estimate: 53,004
 Class of County: 6th
 No. of Common Pleas Court Judgeships: 1



2011 Civil - Docketed Cases Listed by Case Type

TORT (does not include mass tort)

Intentional	5
Malicious Prosecution	0
Motor Vehicle	48
Nuisance	0
Premise Liability	16
Product Liability	3
Slander/Libel/Defamation	0
Other	13

MASS TORT

Asbestos	0
Tobacco	0
Toxic Tort - DES	0
Toxic Tort - Implant	0
Toxic Waste	0
Other	0

PROFESSIONAL LIABILITY

Dental	0
Legal	0
Medical Malpractice	6
Other	1

CONTRACT

(does not include judgments)

Buyer Plaintiff	4
Debt Collection:	
Credit Card	265
Debt Collection: Other	30
Employment Dispute:	
Discrimination	0
Employment Dispute: Other	0
Other	39

REAL PROPERTY

Ejectment*	28
Eminent Domain/ Condemnation*	3
Ground Rent	0
Landlord/Tenant Dispute	6
Mortgage Forclosures:	
Residential*	165
Commercial*	1
Partition of Real Property*	3
Quiet Title*	19
Other*	8

CIVIL APPEALS

Administrative Agencies

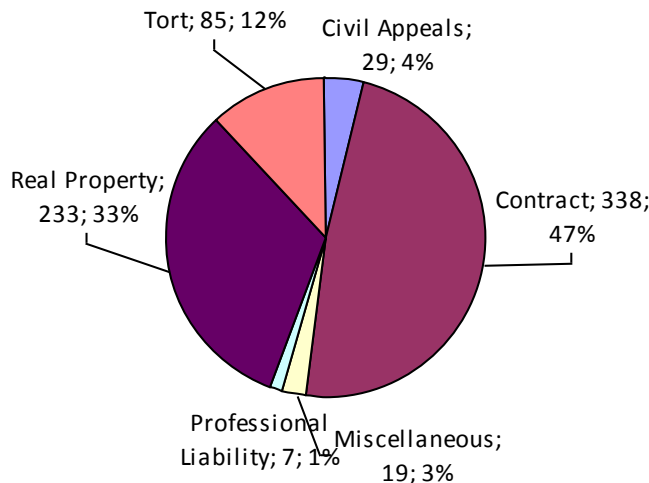
Board of Assessment*	3
Board of Elections*	0
Dept. of Transportation*	22
Zoning Board*	0
Statutory Appeal - Other*	0
Other*	4

MISCELLANEOUS

Common Law/ Statutory Arbitration*	0
Declaratory Judgment*	3
Mandamus*	2
Non-Domestic Relations Restraining Order*	0
Quo Warranto*	0
Replevin*	3
Other*	11

TOTAL DOCKETED CASES: 711

* Civil Other



Of the Docketed Cases:

Pro Se Filings:	26	3.7%
Class Action Suits:	3	0.4%
MDJ Appeals:	42	5.9%

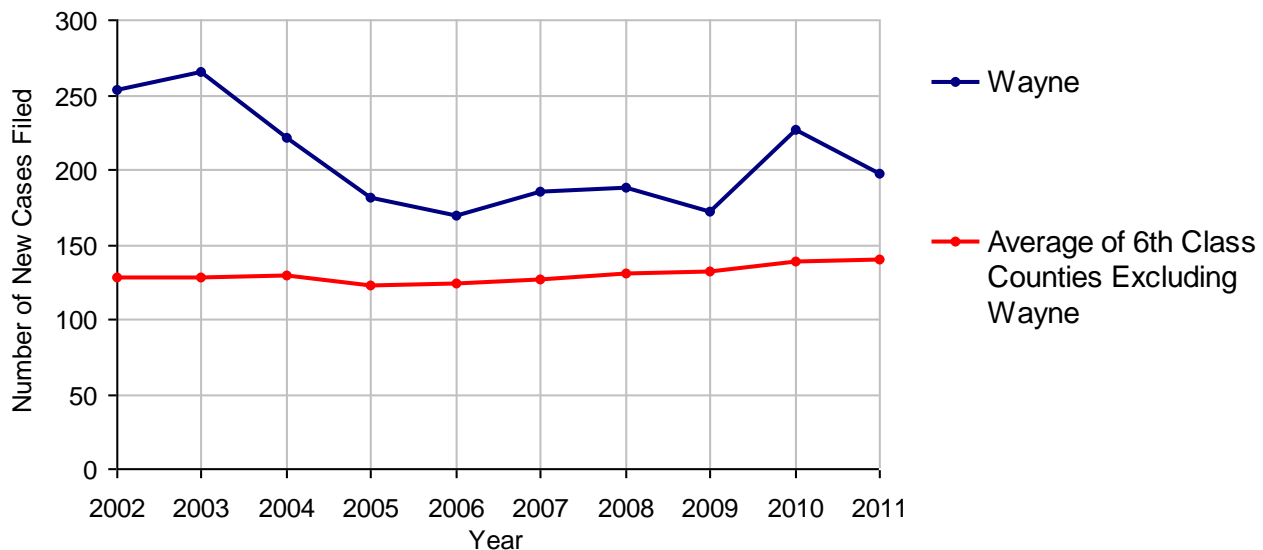
Wayne County

2011 Population Estimate: 53,004
 Class of County: 6th
 No. of Common Pleas Court Judgeships: 1



2011 Protection From Abuse	No. of Petitions
Cases Pending 1/1/2011	29
New Cases Filed in 2011	197
<i>Of these, Petitions Requesting Temporary Orders: 191 (97.0%)</i>	
<i>Temporary Orders DENIED: 10 (5.2%), Temporary Orders GRANTED: 181 (94.8%)</i>	
Cases Available for Processing	226
Processed By:	
Temporary Order DENIED After Ex Parte Hearing and No Evidentiary Hearing Scheduled	4 1.9%
Temporary Order DISMISSED After Evidentiary Hearing and No Final Order Entered	1 0.5%
Final Order DENIED After Evidentiary Hearing Before a Judge	14 6.6%
Final Order GRANTED After Evidentiary Hearing Before a Judge	40 18.9%
Plaintiff Did Not Appear For Evidentiary Hearing	23 10.8%
Final Order by STIPULATION OR AGREEMENT Between the Parties	60 28.3%
Petition WITHDRAWN by Plaintiff	62 29.2%
TRANSFERRED to Another Jurisdiction	1 0.5%
DECEASED Party	0
Other	7 3.3%
Cases Processed	212 100.0%
Cases Pending 12/31/2011	14

PFA New Cases Filed, 2002-2011

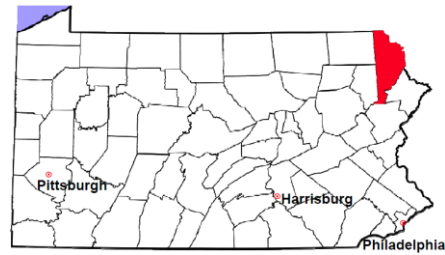


Wayne County

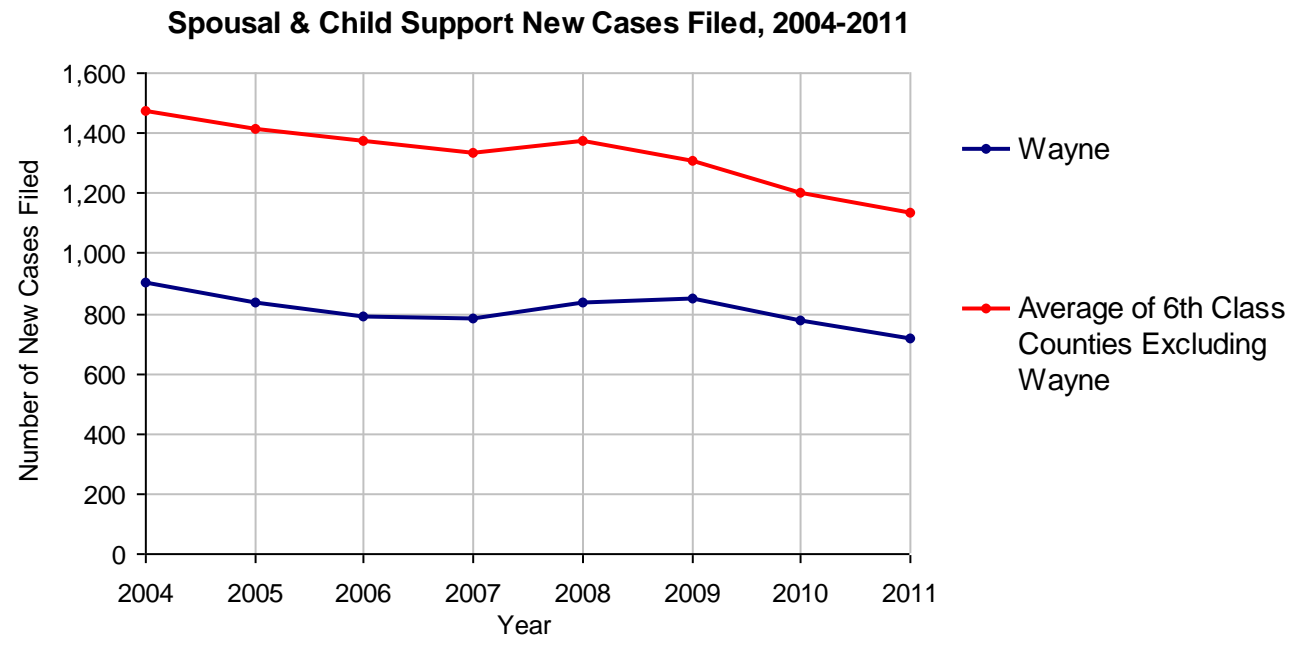
2011 Population Estimate: 53,004

Class of County: 6th

No. of Common Pleas Court Judgeships: 1



2011 Spousal & Child Support	No. of Petitions	
Cases Pending 1/1/2011	86	
New Cases Filed in 2011	718	
Dockets Transferred In (+)	6	
Dockets Transferred Out (-)	13	
Cases Available for Processing	797	
Processed By:		
Judge	15	2.1%
Intake Officer	693	97.9%
Hearing Officer	0	
Other	0	
Cases Processed	708	100.0%
Cases Pending 12/31/2011	89	

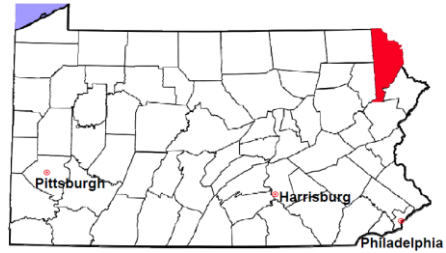


Wayne County

2011 Population Estimate: 53,004

Class of County: 6th

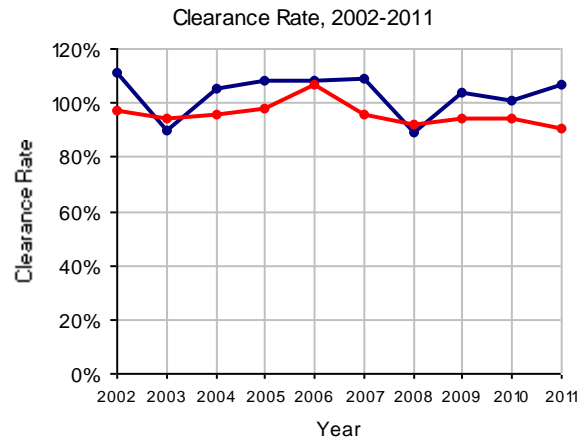
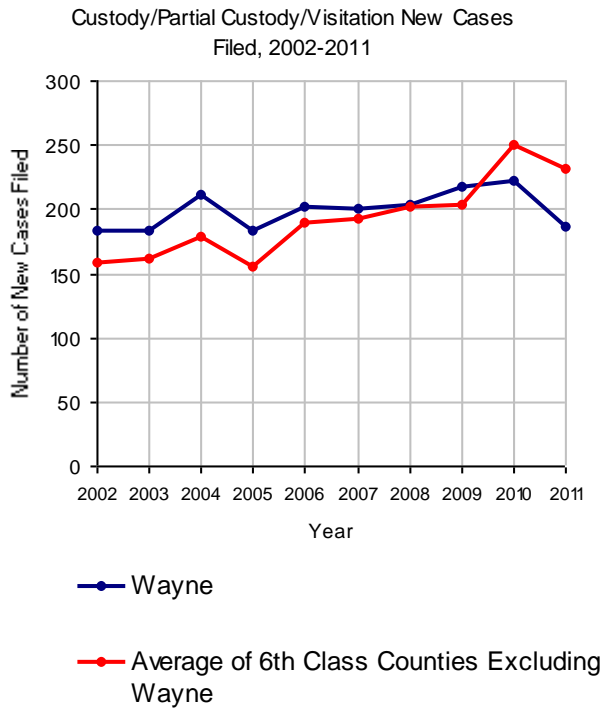
No. of Common Pleas Court Judgeships: 1



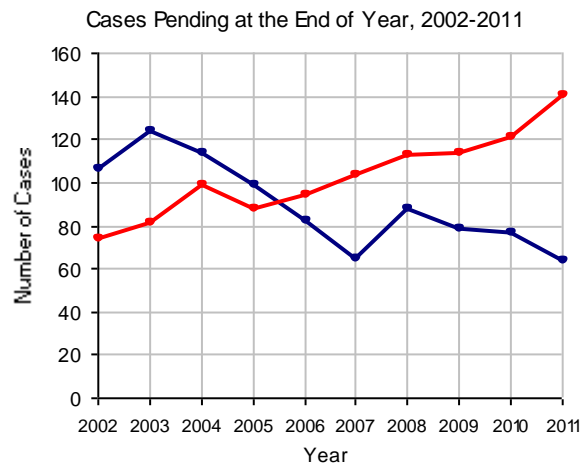
2011 Custody/Partial Custody/Visitation

No. of
Petitions

Cases Pending 1/1/2011	77
New Cases Filed in 2011	186
Cases Available for Processing	263
Processed By:	
Judge	20 10.1%
Non-Judicial Officer	116 58.3%
Other	63 31.7%
Cases Processed	199 100.0%
Cases Pending 12/31/2011	64



Note: Clearance Rate = Cases Processed / New Cases Filed

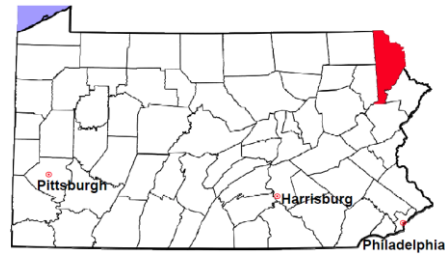


Wayne County

2011 Population Estimate: 53,004

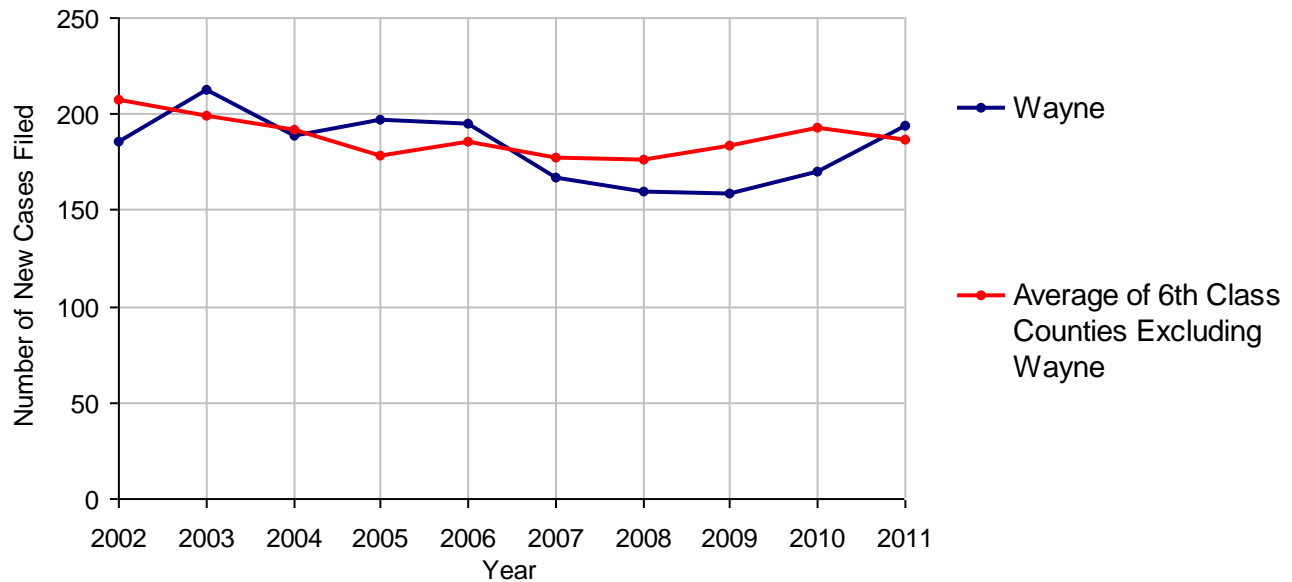
Class of County: 6th

No. of Common Pleas Court Judgeships: 1



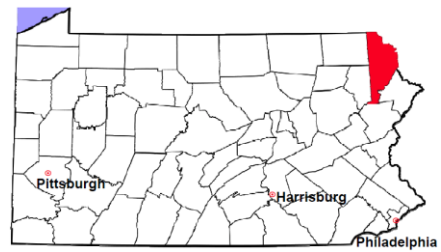
2011 Divorce	No. of Petitions	
Cases Pending 1/1/2011	186	
New Cases Filed in 2011	194	
Cases Available for Processing	380	
Processed By:		
Contested Before a Judge	8	4.6%
Contested Before a Master	16	9.2%
Uncontested	130	74.7%
Other	20	11.5%
Cases Processed	174	100.0%
Cases Pending 12/31/2011	206	

Divorce New Cases Filed, 2002-2011



Wayne County

2011 Population Estimate: 53,004
 Class of County: 6th
 No. of Common Pleas Court Judgeships: 1



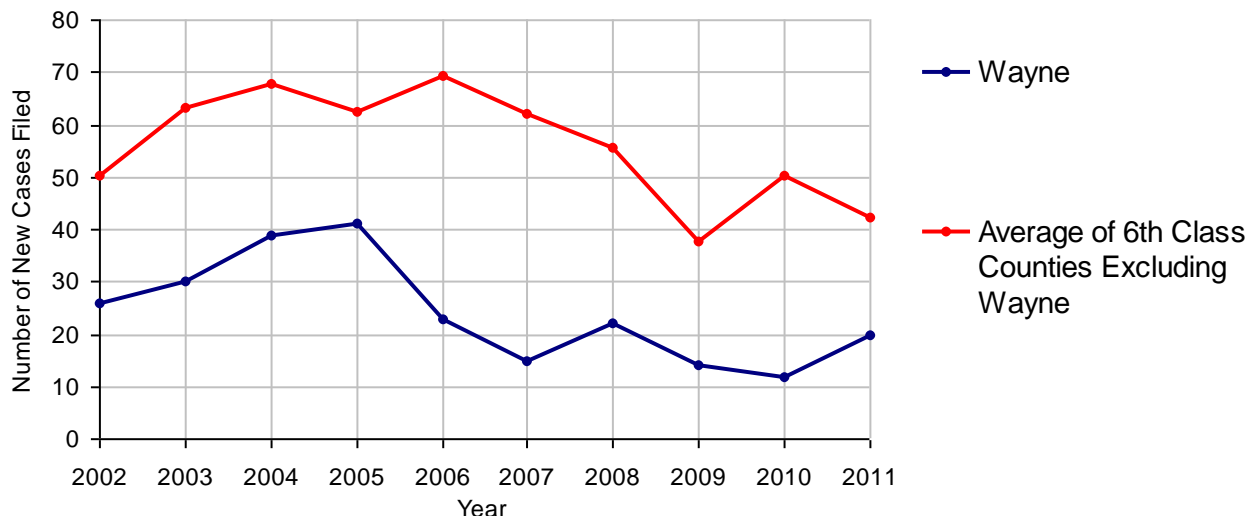
2011 Juvenile Dependency - Active Dependent Inventory



	Abuse/ Neglect	Status Offenses	Total
Cases Pending 1/1/2011	0	0	0
New Petitions Filed in 2011	19	1	20
Other	0	0	0
Total Petitions Available for Processing	19	1	20
Processed by:			
Adjudicated Dependent			
Judge	14	1	15
Master	0	0	0
Adjudicated NOT Dependent			
Judge	0	0	0
Master	0	0	0
Withdrawn/Dismissed/Inactive	0	0	0
Other	1	0	1
Total Petitions Processed	15	1	16
Cases Pending 12/31/2011	4	0	4

Data provided by CPCMS

Abuse/Neglect and Status Offenses New Cases Filed, 2002-2011



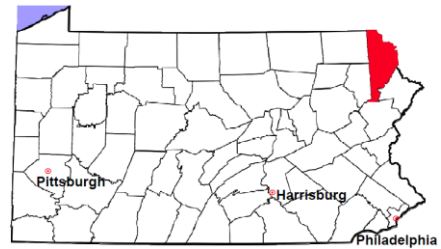
Note: Dependency data for 2002-2010 were collected manually. Dependency data for 2011 were provided by CPCMS.

Wayne County

2011 Population Estimate: 53,004

Class of County: 6th

No. of Common Pleas Court Judgeships: 1



2011 Juvenile Dependency - Adjudicated Dependent Inventory

	Abuse/ Neglect	Status Offenses	Total	
Cases Pending 1/1/2011	35	4	39	
New Adjudicated Dependent Cases	14	1	15	
Other	0	0	0	
Total Adjudicated Dependent Cases	49	5	54	
<u>Court Supervision Terminated:</u>				
Family Reunification	1	1	2	16.7%
Adoption	1	0	1	8.3%
Placement with a Relative/Guardian	1	0	1	8.3%
Aged Out	6	1	7	58.3%
Other Permanency Outcomes*	0	0	0	
Other**	1	0	1	8.3%
Total Adjudicated Dependent Cases Terminated	10	2	12	100.0%
Cases Pending 12/31/2011	39	3	42	

Data provided by CPCMS

* Other Permanency Outcomes include: adjudicated delinquent, death due to natural causes, emancipation, permanent living arrangement, and parent has come forward.

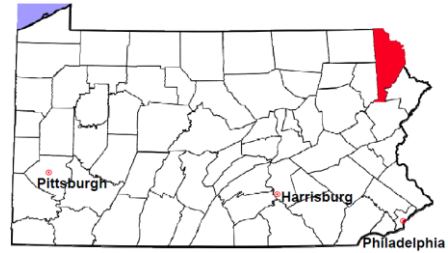
** Other includes cases where Court Supervision is terminated due to transfer out of jurisdiction, withdrawal and administrative closures.

Wayne County

2011 Population Estimate: 53,004

Class of County: 6th

No. of Common Pleas Court Judgeships: 1

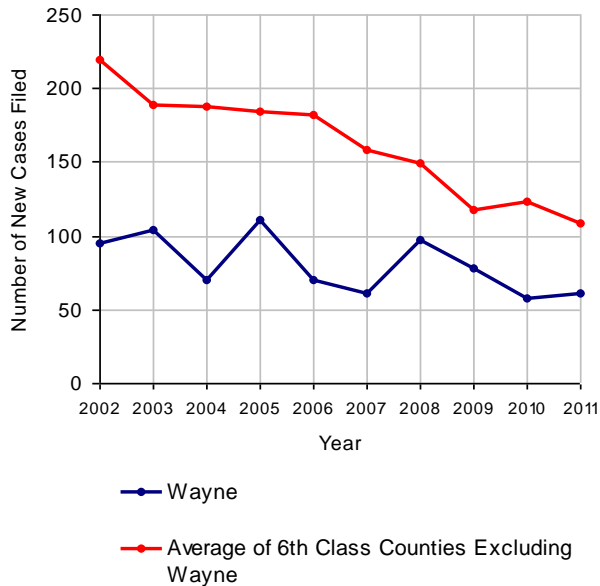


2011 Juvenile Delinquency

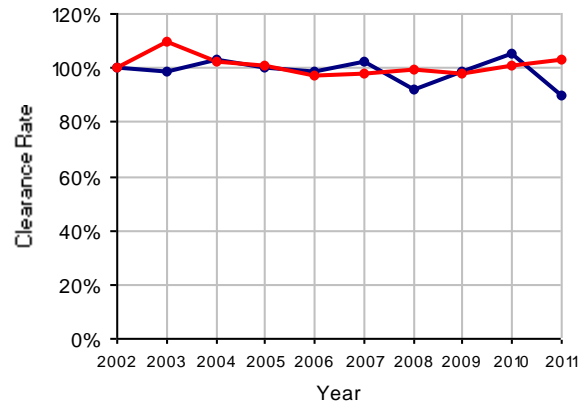
No. of Cases

Cases Pending 1/1/2011	6
New Cases Filed in 2011	61
Cases Available for Processing	67
Processed By:	
Judge	32 58.2%
Non-Judicial Officer	20 36.4%
Other	3 5.5%
Cases Processed	55 100.0%
Cases Pending 12/31/2011	12

Juvenile Delinquency New Cases Filed, 2002-2011

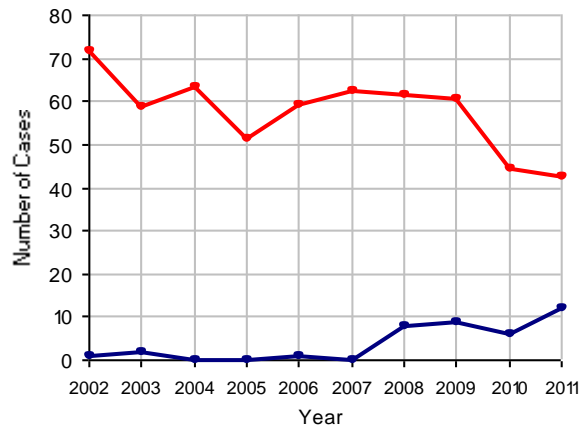


Clearance Rate, 2002-2011



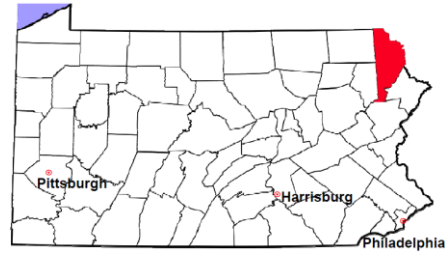
Note: Clearance Rate = Cases Processed / New Cases Filed

Cases Pending at the End of Year, 2002-2011



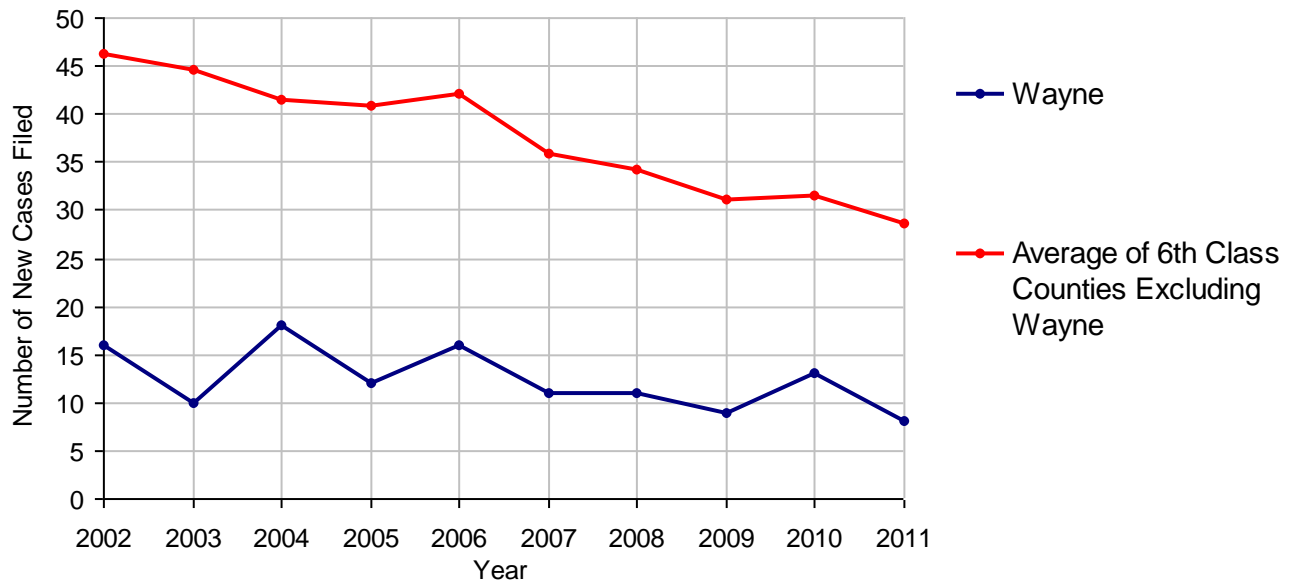
Wayne County

2011 Population Estimate: 53,004
 Class of County: 6th
 No. of Common Pleas Court Judgeships: 1



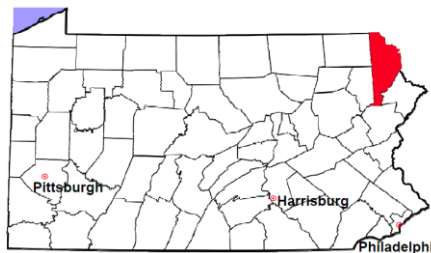
2011 Accounts	No. of Cases	
Cases Pending 1/1/2011	4	
New Cases Filed in 2011	8	
Cases Available for Processing	12	
Processed By:		
Contested before a Judge	0	
Contested before a Non-judicial Officer	1	10.0%
Uncontested	9	90.0%
Other	0	
Cases Processed	10	100.0%
Cases Pending 12/31/2011	2	

Accounts New Cases Filed, 2002-2011



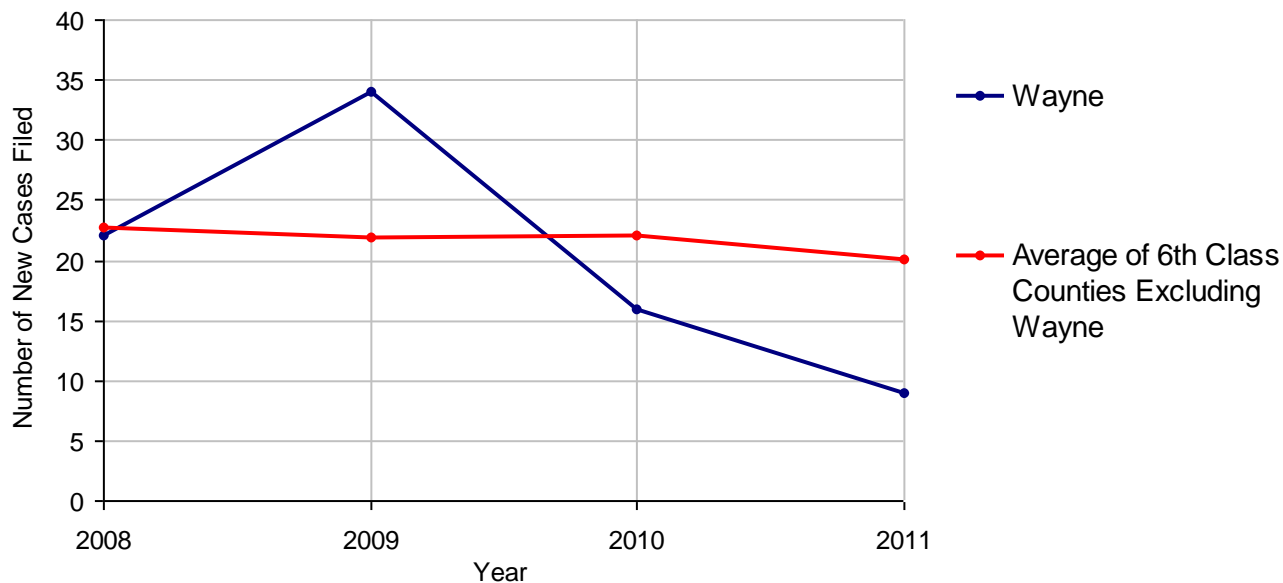
Wayne County

2011 Population Estimate: 53,004
 Class of County: 6th
 No. of Common Pleas Court Judgeships: 1



2011 Adoptions		No. of Cases	
Cases Pending 1/1/2011		5	
New Cases Filed in 2011		9	
Cases Available for Processing		14	
Processed By:			
Contested before a Judge	Granted	1	12.5%
	Denied	0	
Uncontested	Granted	7	87.5%
	Denied	0	
Other		0	
Cases Processed		8 100.0%	
Cases Pending 12/31/2011		6	

Adoptions New Cases Filed, 2008-2011



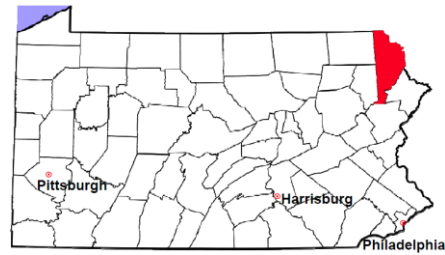
Note: Prior to 2008, each petition was counted as one new case, regardless of the number of children listed on the petition. Starting in 2008, each child listed on a petition is counted as a separate case. Therefore, statistics for the years since 2008 should not be compared to those for the years prior to 2008.

Wayne County

2011 Population Estimate: 53,004

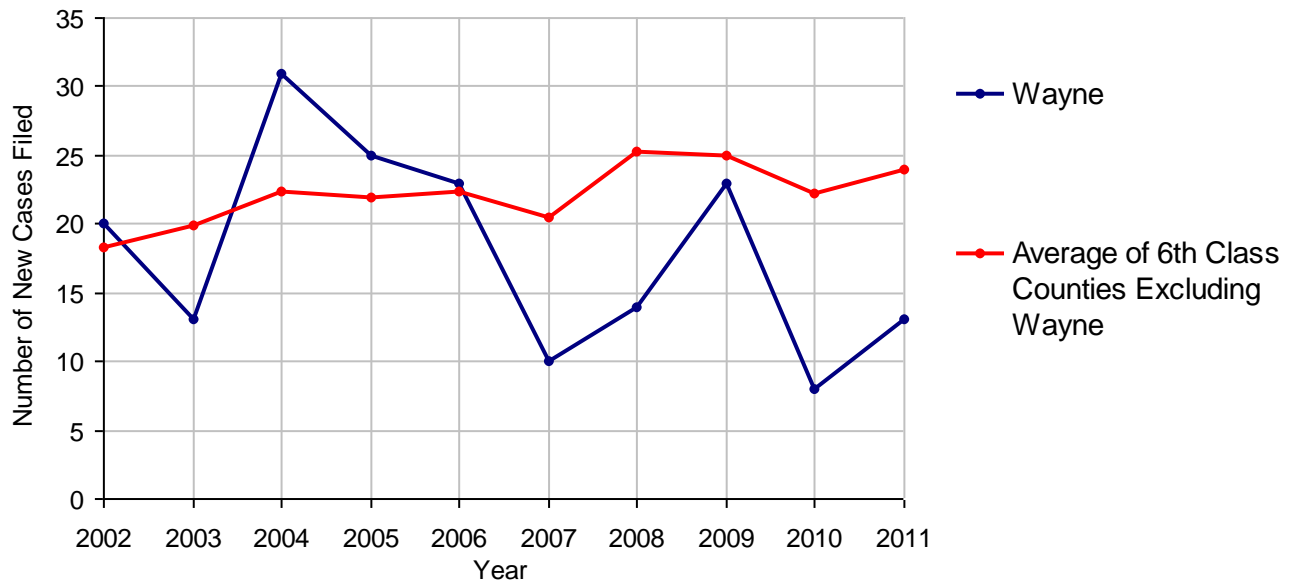
Class of County: 6th

No. of Common Pleas Court Judgeships: 1



2011 Relinquishments/Terminations		No. of Cases
Cases Pending 1/1/2011		5
New Cases Filed in 2011		13
Cases Available for Processing		18
Processed By:		
Contested before a Judge	1	11.1%
Uncontested	8	88.9%
Other	0	
Cases Processed	9	100.0%
Cases Pending 12/31/2011		9

Relinquishments/Terminations New Cases Filed, 2002-2011

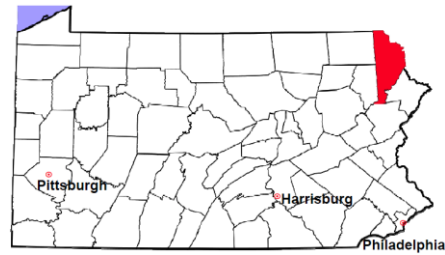


Wayne County

2011 Population Estimate: 53,004

Class of County: 6th

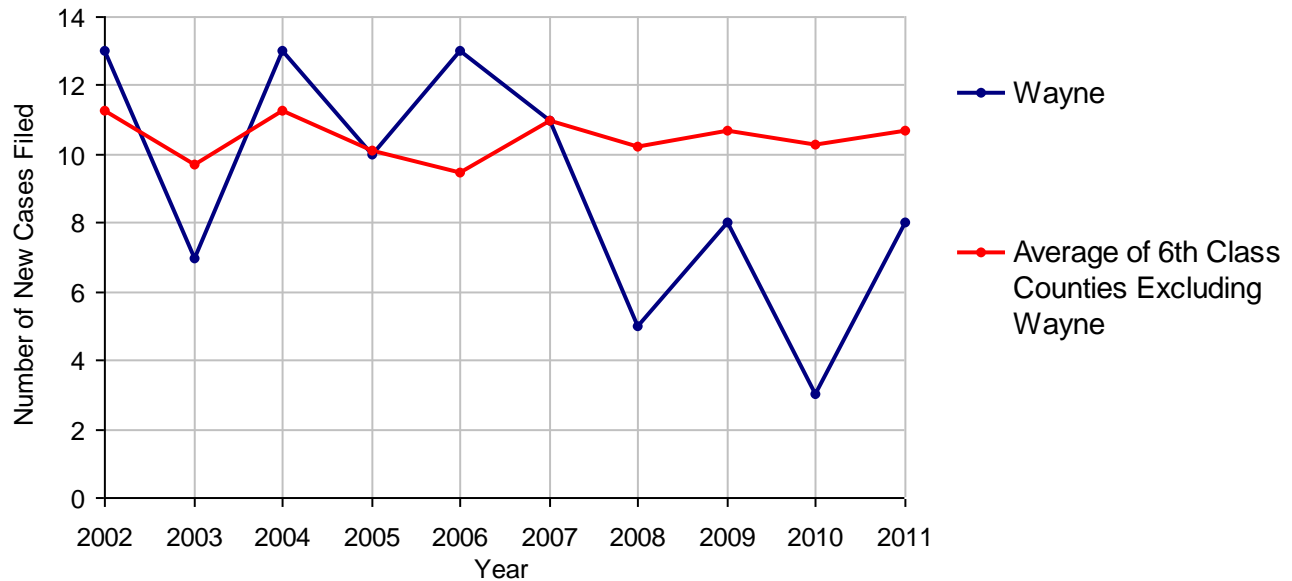
No. of Common Pleas Court Judgeships: 1



2011 Appointment of Guardians

	No. of Cases
Cases Pending 1/1/2011	2
New Cases Filed in 2011	8
Cases Available for Processing	10
Processed By:	
Contested before a Judge	0
Uncontested	7 77.8%
Other	2 22.2%
Cases Processed	9 100.0%
Cases Pending 12/31/2011	1

Appointment of Guardians New Cases Filed, 2002-2011

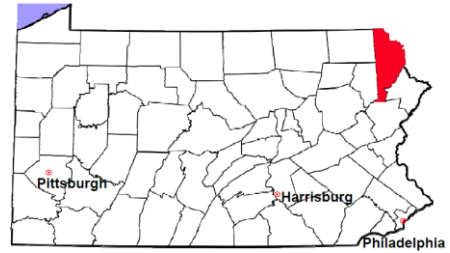


Wayne County

2011 Population Estimate: 53,004

Class of County: 6th

No. of Common Pleas Court Judgeships: 1



2011 Jury Activity and Performance Measures

A. Juror Days	771
B. Number Sent to Voir Dire	650
Voir Dire Attendance Rate (B/A * 100)	84.3%
C. Number of Jurors Selected	296
Juror Selection Rate (C/B * 100)	45.5%

Note: In mid-2011, AOPC began utilizing the National Center for State Courts' Jury Managers' Toolbox for collecting jury data. This has resulted in limited jury performance measures being reported for 2011. Additional data will be available in 2012.