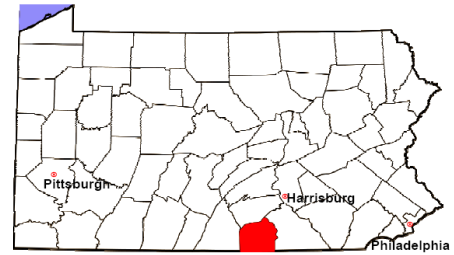


Adams County

2011 Population Estimate: 101,434
 Class of County: 5th
 No. of Common Pleas Court Judgeships: 4



2011 Criminal No. of Cases

Cases Pending 1/1/2011	386
New Cases Filed in 2011	1,212
Reopened Cases	53
Cases Available for Disposition	1,651

Disposed by:

Withdrawn/Dismissed	65	5.4%
ARD	191	15.9%
Guilty Plea	815	67.6%
Non-Jury Trial	10	0.8%
Jury Trial	13	1.1%
Inactive	32	2.7%
Other	79	6.6%
Total Cases Disposed	1,205	100.0%

Cases Pending 12/31/2011 **446**

Cases Awaiting Sentencing 37

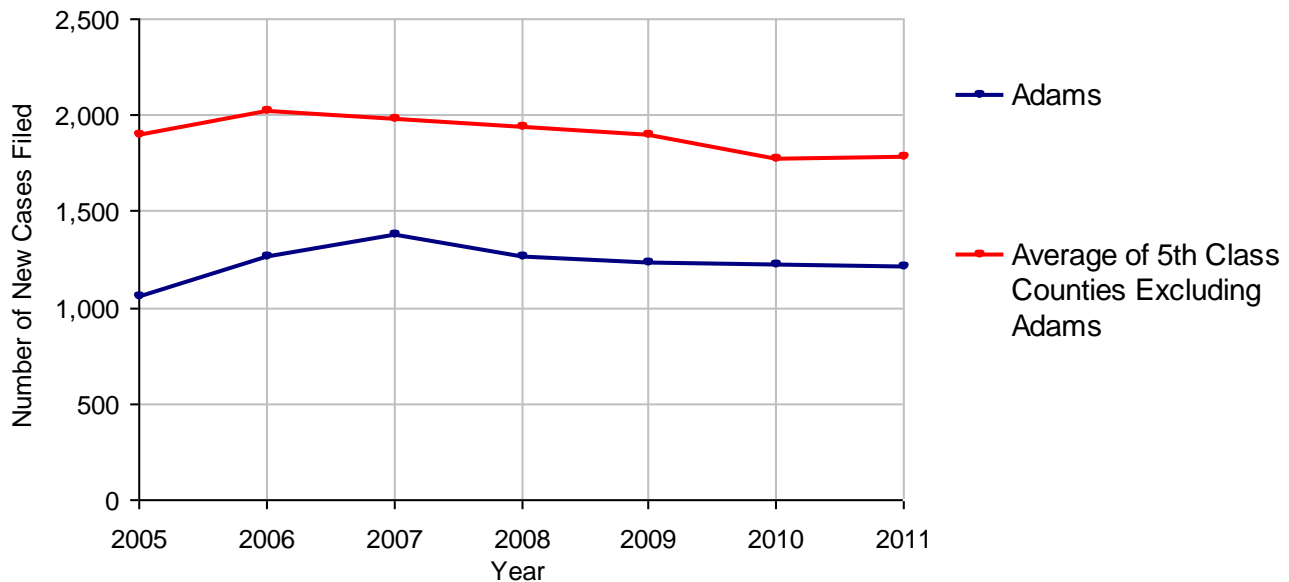
Data provided by CPCMS



Age of Pending Cases as of 12/31/2011

0-60 Days	223	50.0%
61-120 Days	155	34.8%
121-180 Days	33	7.4%
181-240 Days	13	2.9%
241-300 Days	11	2.5%
301-360 Days	4	0.9%
Over 360 Days	7	1.6%
Total	446	100.0%

Criminal New Cases Filed, 2005-2011

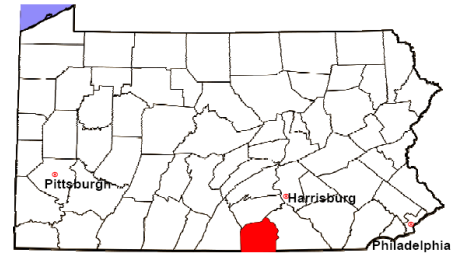


Adams County

2011 Population Estimate: 101,434

Class of County: 5th

No. of Common Pleas Court Judgeships: 4



2011 Criminal - New Cases by Case Type

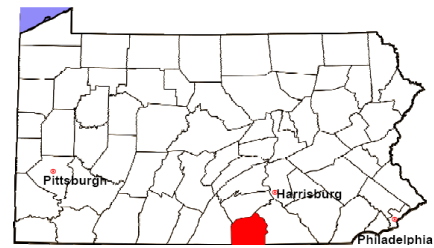


Case Type	Felony	Misdemeanor	Summary /Ungraded	Total
Person	60	133	0	193
Property	110	157	0	267
Drug	41	89	1	131
Weapon	12	5	0	17
Public Order	53	111	0	164
Motor Vehicle - DWI/DUI	0	431	0	431
Motor Vehicle - Other	0	7	2	9
Other	0	0	0	0
Total	276	933	3	1,212
	22.8%	77.0%	0.2%	100.0%

Data provided by CPCMS

Adams County

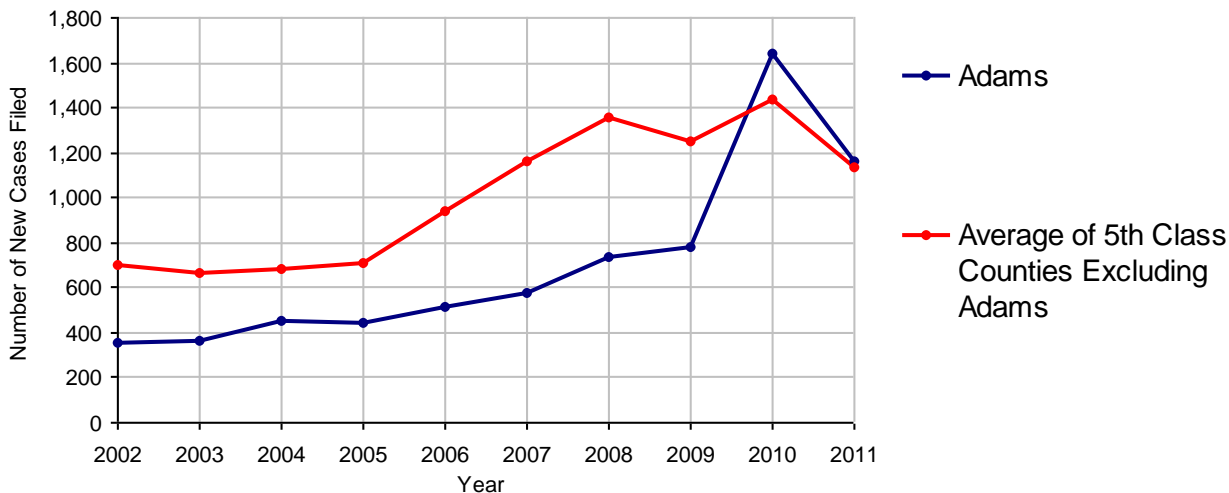
2011 Population Estimate: 101,434
 Class of County: 5th
 No. of Common Pleas Court Judgeships: 4



2011 Civil	Civil Action	Other	Total
Cases Pending 1/1/2011	664	1,100	1,764
Docketed Cases	574	586	1,160
Arbitration Appeals	1	4	5
Transferred In	2	0	2
Returned to Active	4	1	5
Cases Available for Processing	1,245	1,691	2,936
Disposed By:			
Default Judgments	308	235	543
Cases Decided by Arbitration Board	13	7	20
Dispositive Motions	17	15	32
Settlements	77	410	487
Moved to Inactive Status	12	2	14
Transferred/Withdrawn	22	30	52
Pa.R.J.A. 1901 Administrative Purge	48	49	97
Other	112	94	206
Jury Trial	3	0	3
Non-Jury Trial	2	6	8
Total Cases Disposed	614	848	1,462
Cases Pending 12/31/2011	631	843	1,474

Age of Pending Cases as of 12/31/2011 (Civil Action Only)		
0-6 months	197	31.2%
7-12 months	92	14.6%
13-18 months	82	13.0%
19-24 months	47	7.4%
25-30 months	74	11.7%
31-36 months	50	7.9%
37-42 months	47	7.4%
43-48 months	26	4.1%
49-54 months	6	1.0%
55-60 months	3	0.5%
61-66 months	4	0.6%
67-72 months	1	0.2%
Over 72 months	2	0.3%
Total	631	100.0%

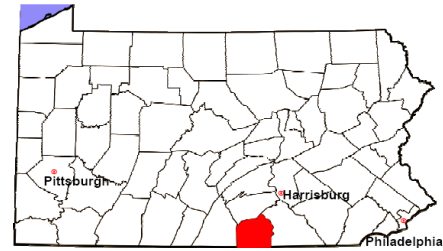
Docketed Cases, 2002-2011



Note: Prior to June 2010, docketed cases under the "Other" category were not reported. The reporting of these cases starting from June 2010 may contribute to an increase in docketed cases from 2009 to 2010.

Adams County

2011 Population Estimate: 101,434
 Class of County: 5th
 No. of Common Pleas Court Judgeships: 4



2011 Civil - Docketed Cases Listed by Case Type

TORT (does not include mass tort)

Intentional	3
Malicious Prosecution	0
Motor Vehicle	43
Nuisance	0
Premise Liability	15
Product Liability	2
Slander/Libel/Defamation	2
Other	18

MASS TORT

Asbestos	0
Tobacco	0
Toxic Tort - DES	0
Toxic Tort - Implant	0
Toxic Waste	0
Other	1

PROFESSIONAL LIABILITY

Dental	0
Legal	0
Medical Malpractice	1
Other	0

CONTRACT

(does not include judgments)

Buyer Plaintiff	7
Debt Collection:	
Credit Card	327
Debt Collection: Other	118
Employment Dispute:	
Discrimination	1
Employment Dispute: Other	4
Other	26

REAL PROPERTY

Ejectment*	35
Eminent Domain/ Condemnation*	2
Ground Rent	0
Landlord/Tenant Dispute	6
Mortgage Forclosures:	
Residential*	296
Commercial*	22
Partition of Real Property*	5
Quiet Title*	8
Other*	12

CIVIL APPEALS

Administrative Agencies

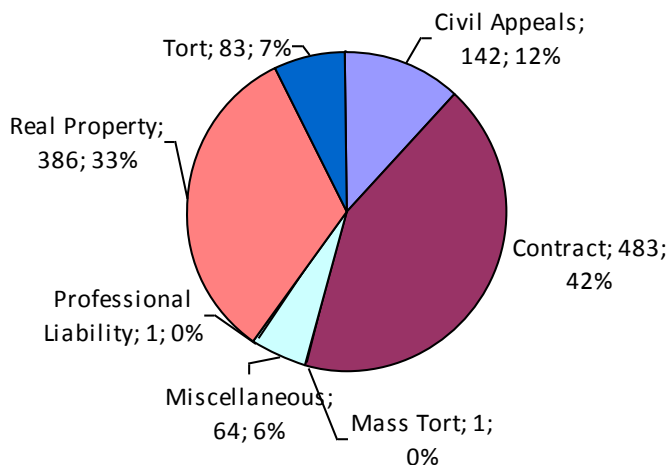
Board of Assessment*	22
Board of Elections*	105
Dept. of Transportation*	6
Zoning Board*	4
Statutory Appeal - Other*	3
Other*	2

MISCELLANEOUS

Common Law/ Statutory Arbitration*	0
Declaratory Judgment*	5
Mandamus*	0
Non-Domestic Relations Restraining Order*	0
Quo Warranto*	1
Replevin*	9
Other*	49

TOTAL DOCKETED CASES:
1,160

* Civil Other



Of the Docketed Cases:

Pro Se Filings:	75	6.5%
Class Action Suits:	0	
MDJ Appeals:	44	3.8%

Adams County

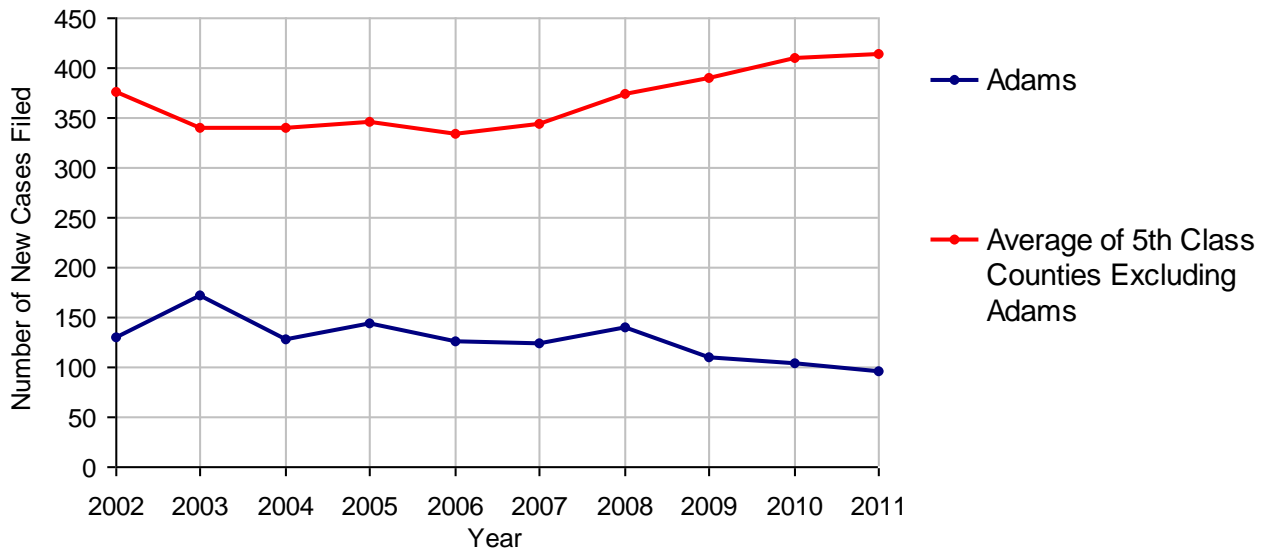
2011 Population Estimate: 101,434
 Class of County: 5th
 No. of Common Pleas Court Judgeships: 4



2011 Protection From Abuse

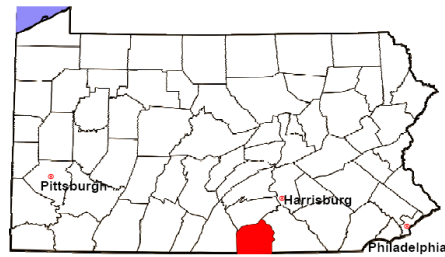
	No. of Petitions
Cases Pending 1/1/2011	7
New Cases Filed in 2011	96
<i>Of these, Petitions Requesting Temporary Orders: 96 (100.0%)</i>	
<i>Temporary Orders DENIED: 4 (4.2%), Temporary Orders GRANTED: 92 (95.8%)</i>	
Cases Available for Processing	103
Processed By:	
Temporary Order DENIED After Ex Parte Hearing and No Evidentiary Hearing Scheduled	2 2.0%
Temporary Order DISMISSED After Evidentiary Hearing and No Final Order Entered	0
Final Order DENIED After Evidentiary Hearing Before a Judge	9 9.0%
Final Order GRANTED After Evidentiary Hearing Before a Judge	10 10.0%
Plaintiff Did Not Appear For Evidentiary Hearing	7 7.0%
Final Order by STIPULATION OR AGREEMENT Between the Parties	51 51.0%
Petition WITHDRAWN by Plaintiff	21 21.0%
TRANSFERRED to Another Jurisdiction	0
DECEASED Party	0
Other	0
Cases Processed	100 100.0%
Cases Pending 12/31/2011	3

PFA New Cases Filed, 2002-2011

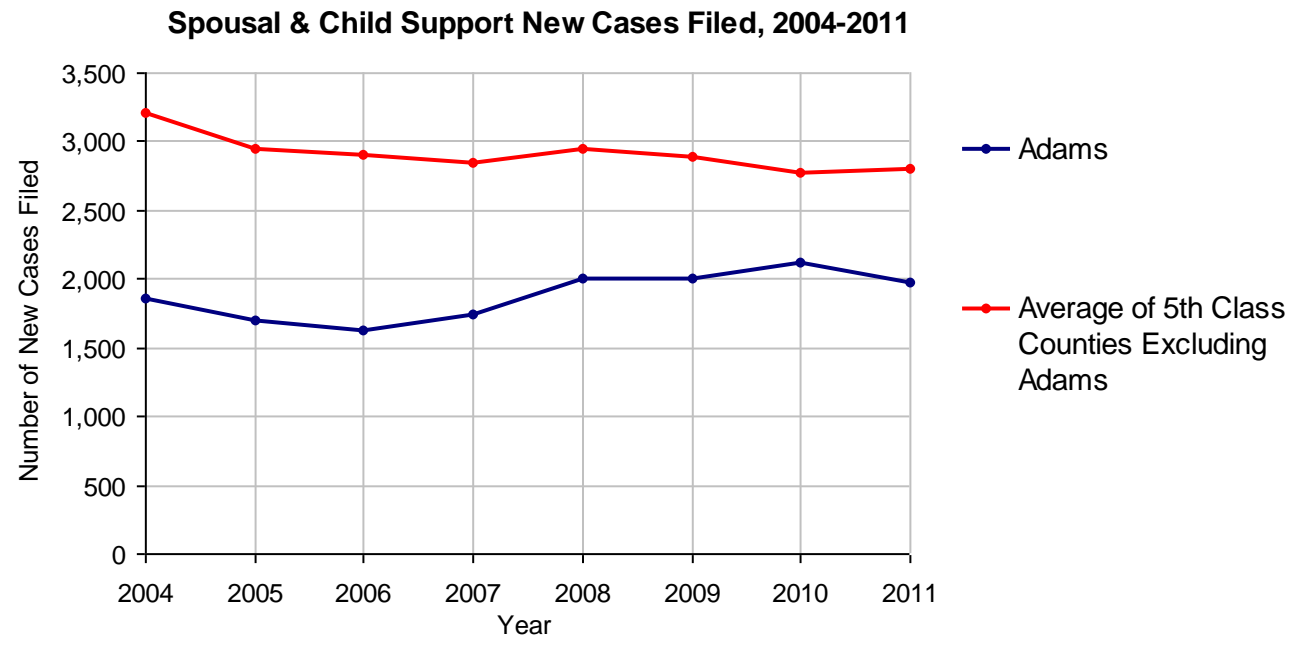


Adams County

2011 Population Estimate: 101,434
 Class of County: 5th
 No. of Common Pleas Court Judgeships: 4

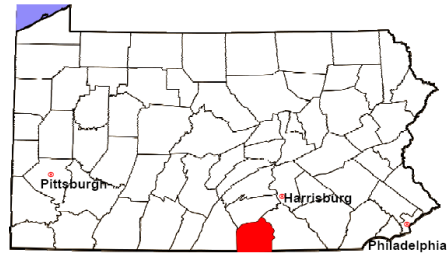


2011 Spousal & Child Support	No. of Petitions	
Cases Pending 1/1/2011	262	
New Cases Filed in 2011	1,969	
Dockets Transferred In (+)	22	
Dockets Transferred Out (-)	22	
Cases Available for Processing	2,231	
Processed By:		
Judge	144	7.2%
Intake Officer	1,851	92.8%
Hearing Officer	0	
Other	0	
Cases Processed	1,995	100.0%
Cases Pending 12/31/2011	236	



Adams County

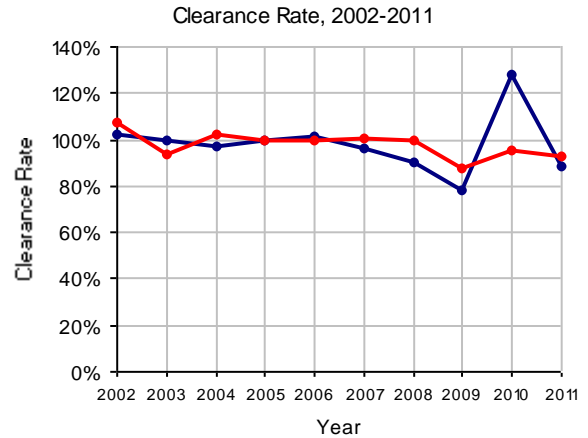
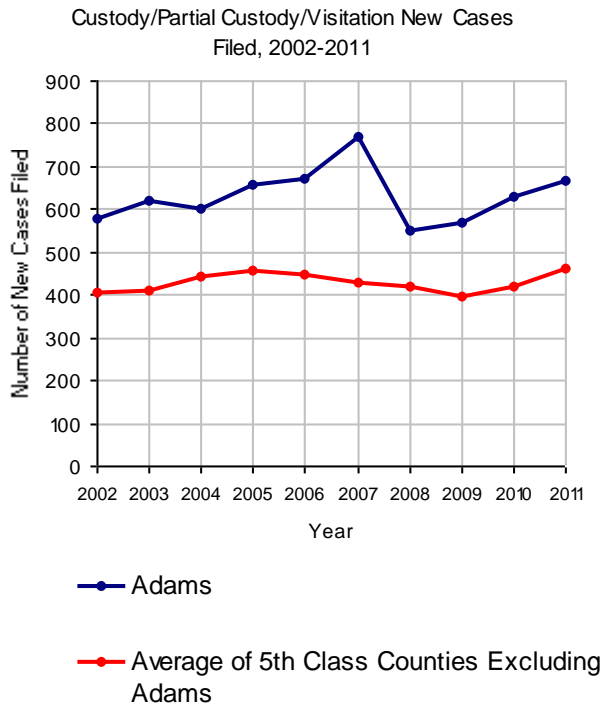
2011 Population Estimate: 101,434
 Class of County: 5th
 No. of Common Pleas Court Judgeships: 4



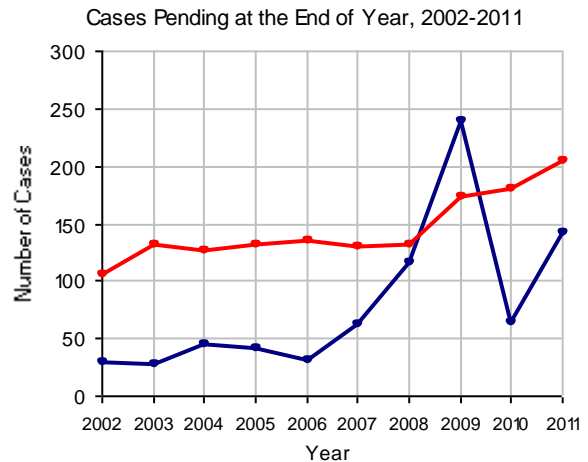
2011 Custody/Partial Custody/Visitation

No. of
Petitions

Cases Pending 1/1/2011	64
New Cases Filed in 2011	669
Cases Available for Processing	733
Processed By:	
Judge	574 97.3%
Non-Judicial Officer	0
Other	16 2.7%
Cases Processed	590 100.0%
Cases Pending 12/31/2011	143

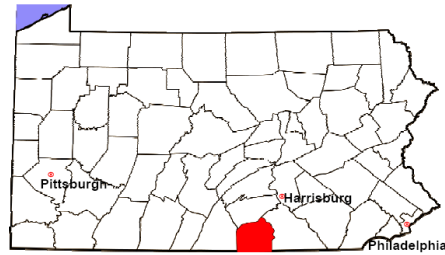


Note: Clearance Rate = Cases Processed / New Cases Filed



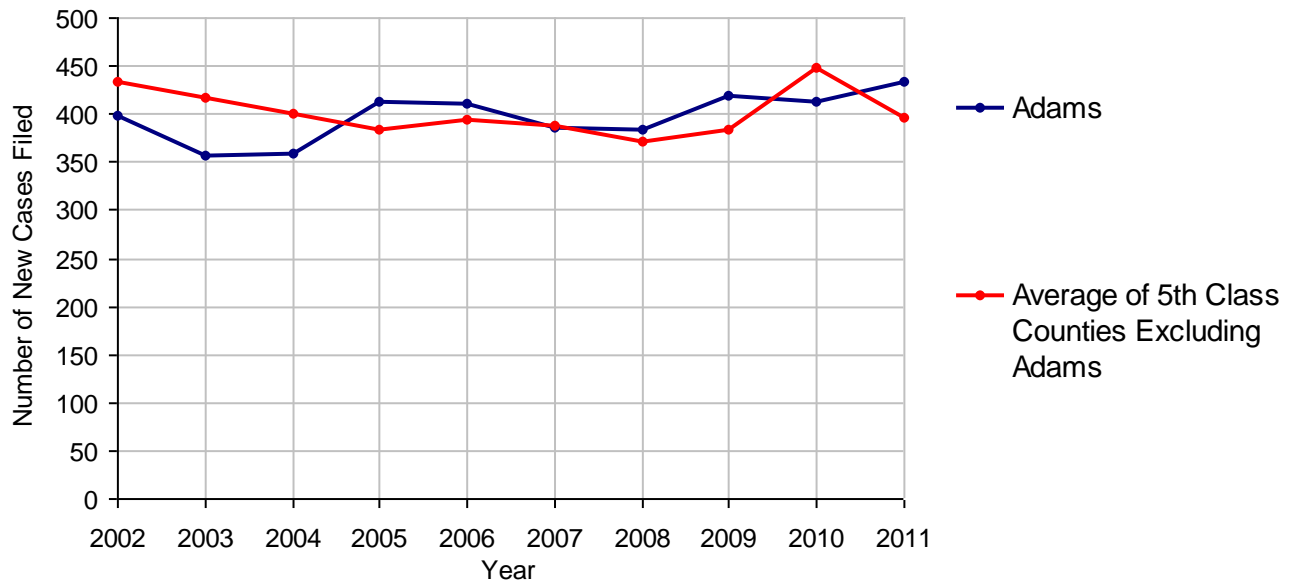
Adams County

2011 Population Estimate: 101,434
 Class of County: 5th
 No. of Common Pleas Court Judgeships: 4



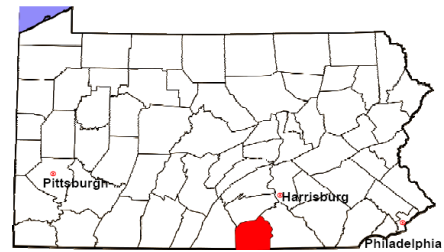
2011 Divorce	No. of Petitions
Cases Pending 1/1/2011	712
New Cases Filed in 2011	433
Cases Available for Processing	1,145
Processed By:	
Contested Before a Judge	4 0.9%
Contested Before a Master	17 3.9%
Uncontested	359 82.9%
Other	53 12.2%
Cases Processed	433 100.0%
Cases Pending 12/31/2011	712

Divorce New Cases Filed, 2002-2011



Adams County

2011 Population Estimate: 101,434
 Class of County: 5th
 No. of Common Pleas Court Judgeships: 4



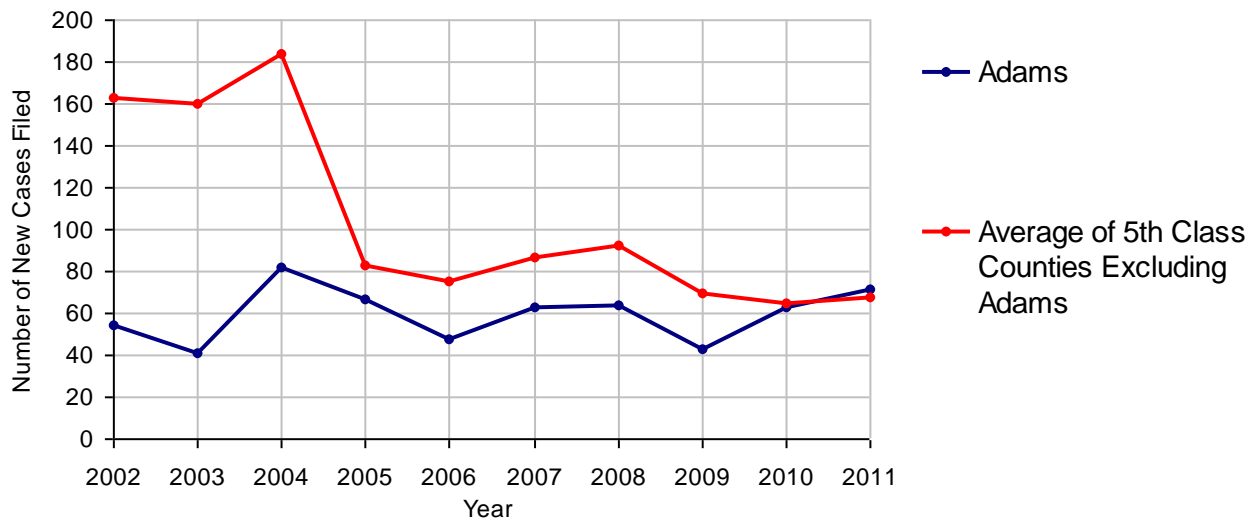
2011 Juvenile Dependency - Active Dependent Inventory



	Abuse/ Neglect	Status Offenses	Total
Cases Pending 1/1/2011	7	4	11
New Petitions Filed in 2011	38	33	71
Other	0	0	0
Total Petitions Available for Processing	45	37	82
Processed by:			
Adjudicated Dependent			
Judge	36	30	66
Master	0	0	0
Adjudicated NOT Dependent			
Judge	0	0	0
Master	0	0	0
Withdrawn/Dismissed/Inactive	4	5	9
Other	1	1	2
Total Petitions Processed	41	36	77
Cases Pending 12/31/2011	4	1	5

Data provided by CPCMS

Abuse/Neglect and Status Offenses New Cases Filed, 2002-2011



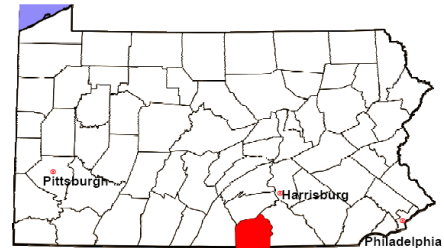
Note: Dependency data for 2002-2010 were collected manually. Dependency data for 2011 were provided by CPCMS.

Adams County

2011 Population Estimate: 101,434

Class of County: 5th

No. of Common Pleas Court Judgeships: 4



2011 Juvenile Dependency - Adjudicated Dependent Inventory

	Abuse/ Neglect	Status Offenses	Total	
Cases Pending 1/1/2011	70	23	93	
New Adjudicated Dependent Cases	36	30	66	
Other	1	0	1	
Total Adjudicated Dependent Cases	107	53	160	
<u>Court Supervision Terminated:</u>				
Family Reunification	15	20	35	64.8%
Adoption	8	0	8	14.8%
Placement with a Relative/Guardian	5	2	7	13.0%
Aged Out	0	0	0	
Other Permanency Outcomes*	1	0	1	1.9%
Other**	3	0	3	5.6%
Total Adjudicated Dependent Cases Terminated	32	22	54	100.0%
Cases Pending 12/31/2011	75	31	106	

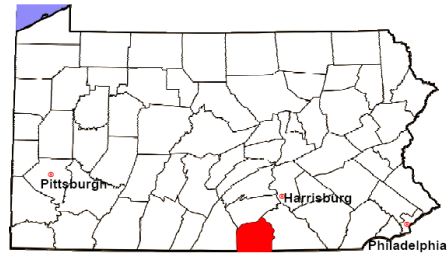
Data provided by CPCMS

* Other Permanency Outcomes include: adjudicated delinquent, death due to natural causes, emancipation, permanent living arrangement, and parent has come forward.

** Other includes cases where Court Supervision is terminated due to transfer out of jurisdiction, withdrawal and administrative closures.

Adams County

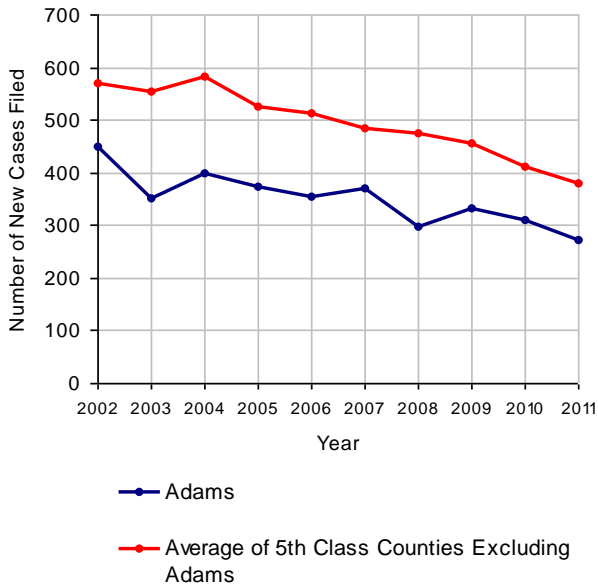
2011 Population Estimate: 101,434
 Class of County: 5th
 No. of Common Pleas Court Judgeships: 4



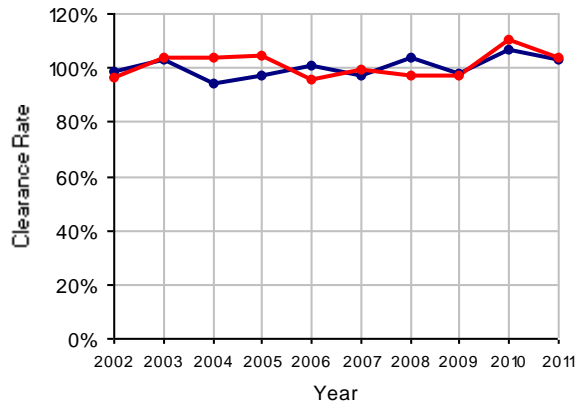
2011 Juvenile Delinquency

	No. of Cases
Cases Pending 1/1/2011	133
New Cases Filed in 2011	272
Cases Available for Processing	405
Processed By:	
Judge	80 28.6%
Non-Judicial Officer	154 55.0%
Other	46 16.4%
Cases Processed	280 100.0%
Cases Pending 12/31/2011	125

Juvenile Delinquency New Cases Filed, 2002-2011

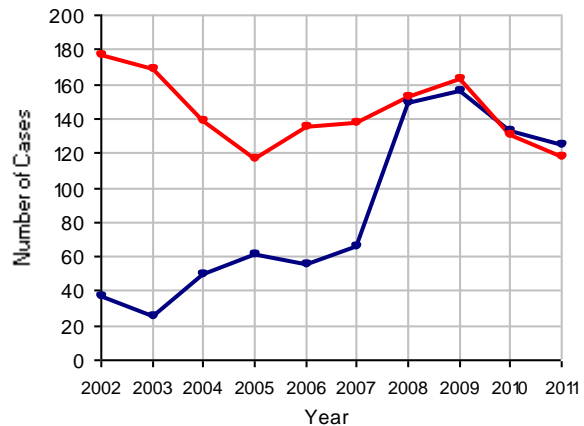


Clearance Rate, 2002-2011



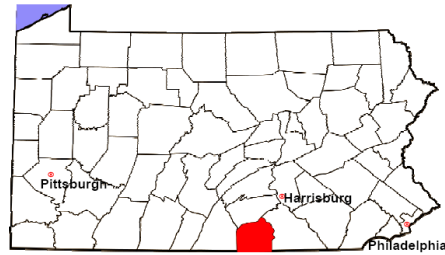
Note: Clearance Rate = Cases Processed / New Cases Filed

Cases Pending at the End of Year, 2002-2011



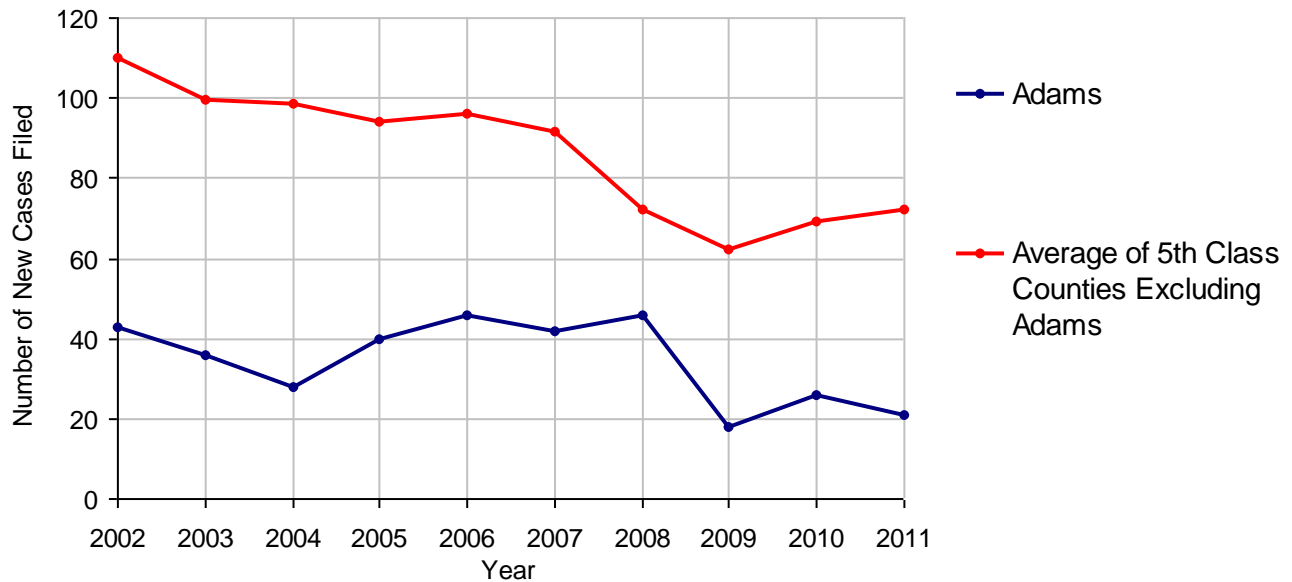
Adams County

2011 Population Estimate: 101,434
 Class of County: 5th
 No. of Common Pleas Court Judgeships: 4



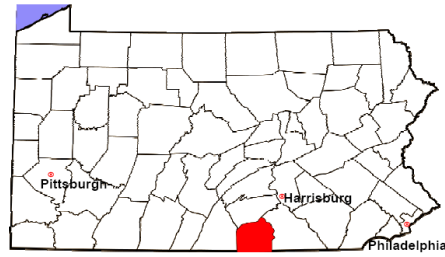
2011 Accounts	No. of Cases	
Cases Pending 1/1/2011	6	
New Cases Filed in 2011	21	
Cases Available for Processing	27	
Processed By:		
Contested before a Judge	0	
Contested before a Non-judicial Officer	0	
Uncontested	24	100.0%
Other	0	
Cases Processed	24	100.0%
Cases Pending 12/31/2011	3	

Accounts New Cases Filed, 2002-2011



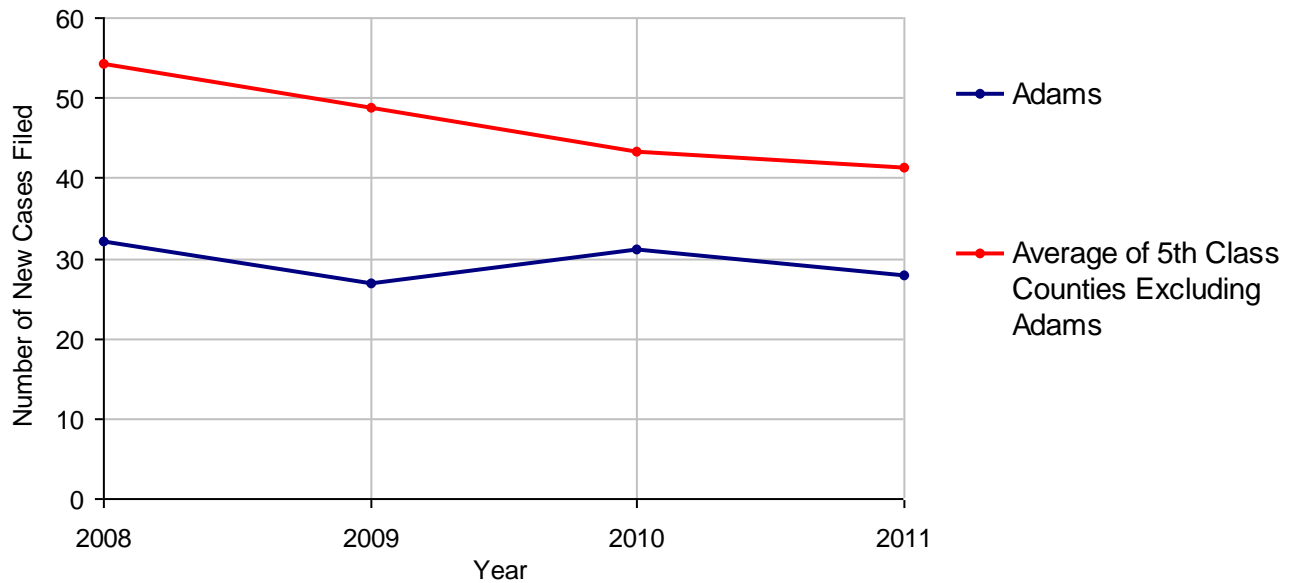
Adams County

2011 Population Estimate: 101,434
 Class of County: 5th
 No. of Common Pleas Court Judgeships: 4



2011 Adoptions		No. of Cases	
Cases Pending 1/1/2011		11	
New Cases Filed in 2011		28	
Cases Available for Processing		39	
Processed By:			
Contested before a Judge	Granted	0	
	Denied	0	
Uncontested	Granted	30	100.0%
	Denied	0	
Other		0	
Cases Processed		30	100.0%
Cases Pending 12/31/2011		9	

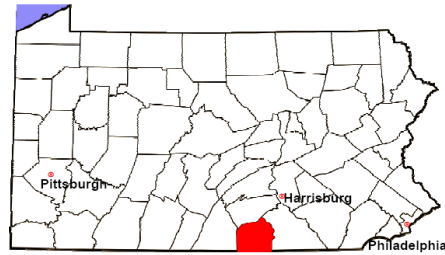
Adoptions New Cases Filed, 2008-2011



Note: Prior to 2008, each petition was counted as one new case, regardless of the number of children listed on the petition. Starting in 2008, each child listed on a petition is counted as a separate case. Therefore, statistics for the years since 2008 should not be compared to those for the years prior to 2008.

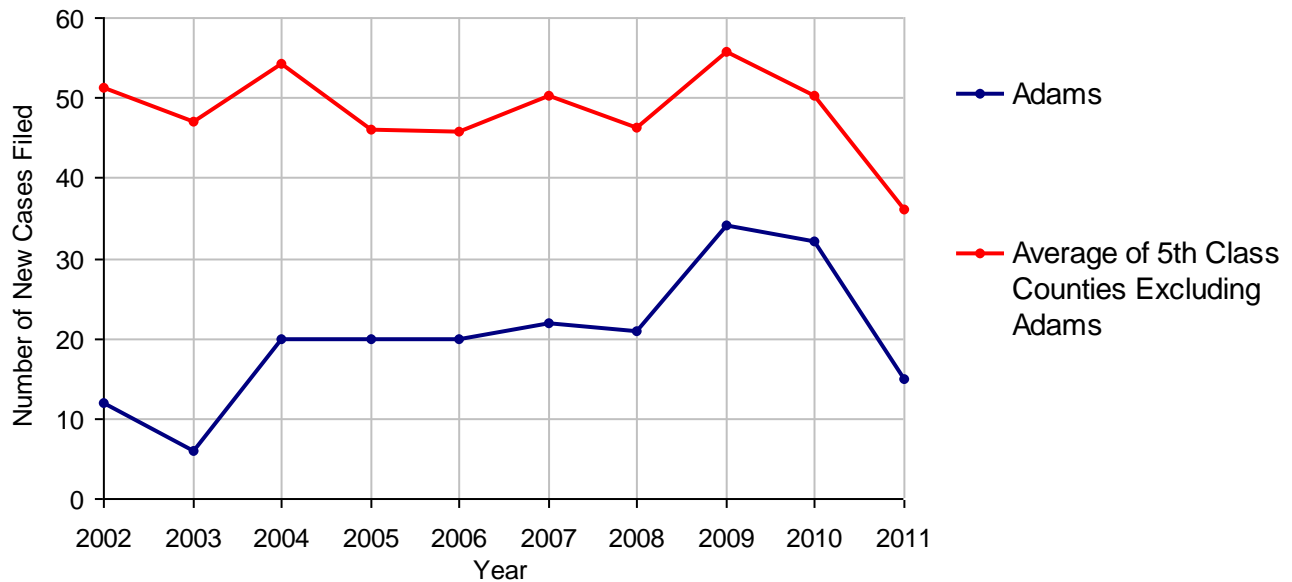
Adams County

2011 Population Estimate: 101,434
 Class of County: 5th
 No. of Common Pleas Court Judgeships: 4



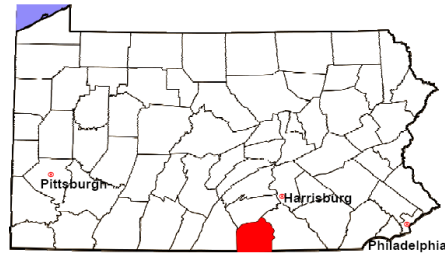
2011 Relinquishments/Terminations	No. of Cases
Cases Pending 1/1/2011	11
New Cases Filed in 2011	15
Cases Available for Processing	26
Processed By:	
Contested before a Judge	0
Uncontested	24 100.0%
Other	0
Cases Processed	24 100.0%
Cases Pending 12/31/2011	2

Relinquishments/Terminations New Cases Filed, 2002-2011



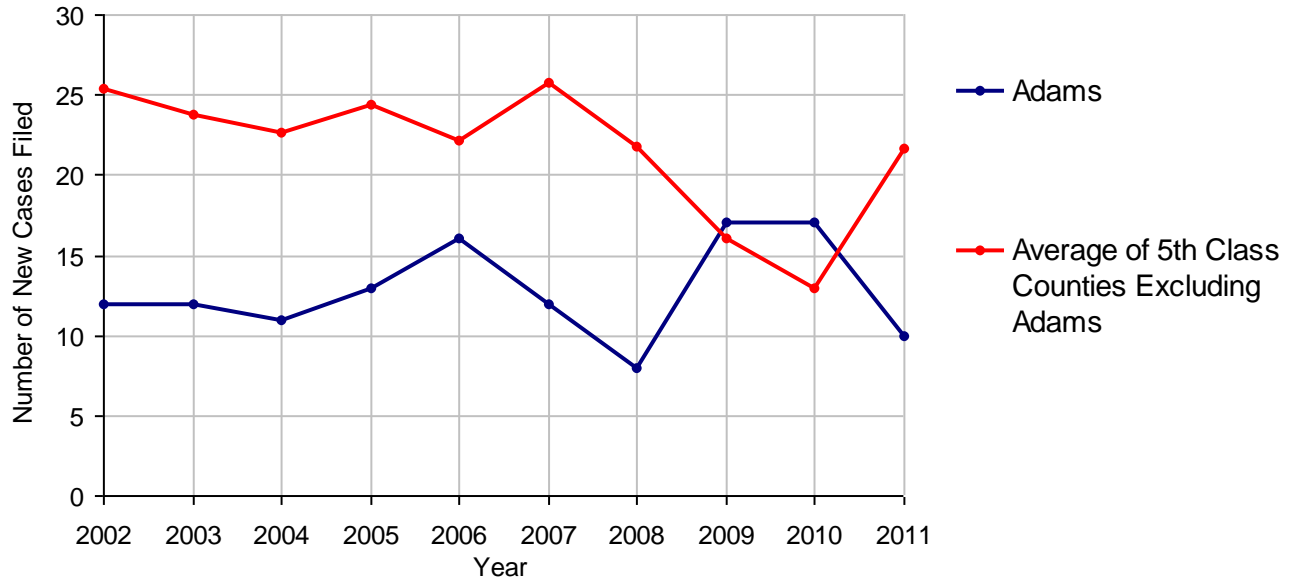
Adams County

2011 Population Estimate: 101,434
 Class of County: 5th
 No. of Common Pleas Court Judgeships: 4



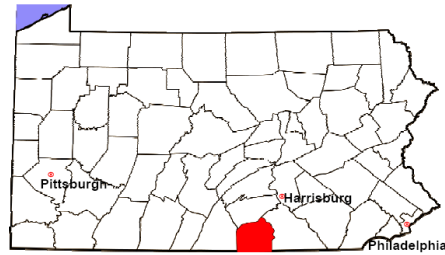
2011 Appointment of Guardians		No. of Cases
Cases Pending 1/1/2011		2
New Cases Filed in 2011		10
Cases Available for Processing		12
Processed By:		
Contested before a Judge		0
Uncontested		10 100.0%
Other		0
Cases Processed		10 100.0%
Cases Pending 12/31/2011		2

Appointment of Guardians New Cases Filed, 2002-2011



Adams County

2011 Population Estimate: 101,434
Class of County: 5th
No. of Common Pleas Court Judgeships: 4



2011 Jury Activity and Performance Measures

A. Juror Days	661
B. Number Sent to Voir Dire	939
Voir Dire Attendance Rate (B/A * 100)	142.1%
C. Number of Jurors Selected	337
Juror Selection Rate (C/B * 100)	35.9%

Note: In mid-2011, AOPC began utilizing the National Center for State Courts' Jury Managers' Toolbox for collecting jury data. This has resulted in limited jury performance measures being reported for 2011. Additional data will be available in 2012.