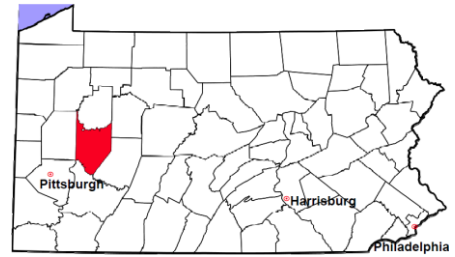


Armstrong County

2011 Population Estimate: 68,568
 Class of County: 6th
 No. of Common Pleas Court Judgeships: 2



2011 Criminal No. of Cases

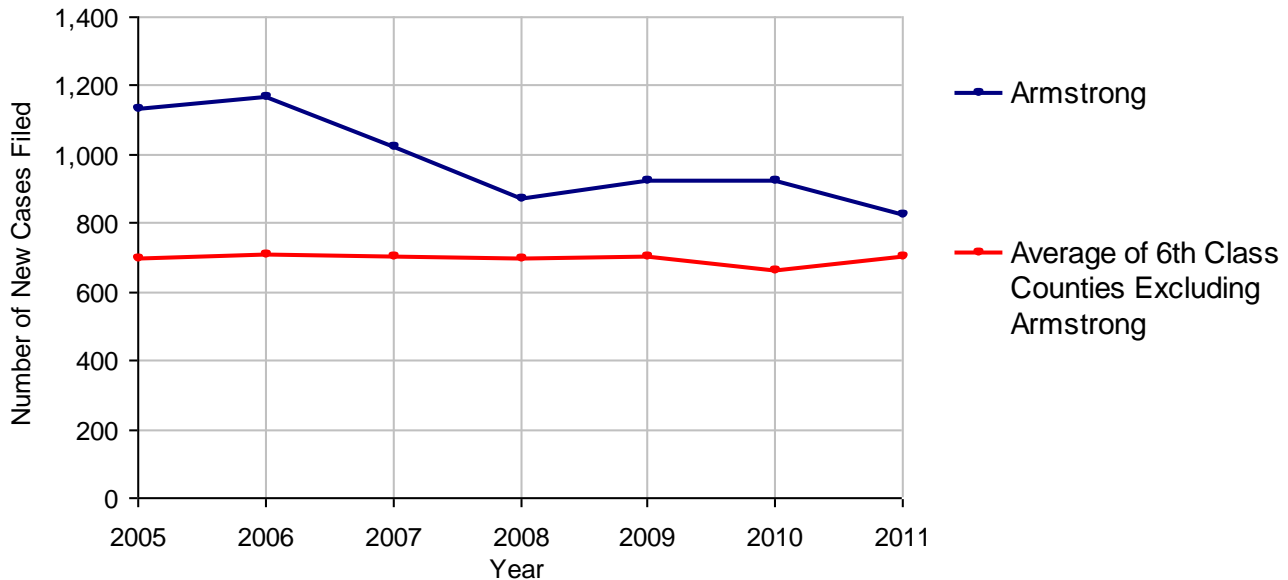
Cases Pending 1/1/2011	355	
New Cases Filed in 2011	830	
Reopened Cases	56	
Cases Available for Disposition	1,241	
Disposed by:		
Withdrawn/Dismissed	105	12.4%
ARD	227	26.9%
Guilty Plea	474	56.2%
Non-Jury Trial	6	0.7%
Jury Trial	2	0.2%
Inactive	16	1.9%
Other	14	1.7%
Total Cases Disposed	844	100.0%
Cases Pending 12/31/2011	397	
Cases Awaiting Sentencing	80	



Age of Pending Cases as of 12/31/2011		
0-60 Days	136	34.3%
61-120 Days	115	29.0%
121-180 Days	61	15.4%
181-240 Days	25	6.3%
241-300 Days	17	4.3%
301-360 Days	8	2.0%
Over 360 Days	35	8.8%
Total	397	100.0%

Data provided by CPCMS

Criminal New Cases Filed, 2005-2011

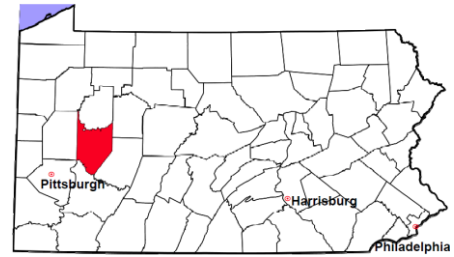


Armstrong County

2011 Population Estimate: 68,568

Class of County: 6th

No. of Common Pleas Court Judgeships: 2



2011 Criminal - New Cases by Case Type

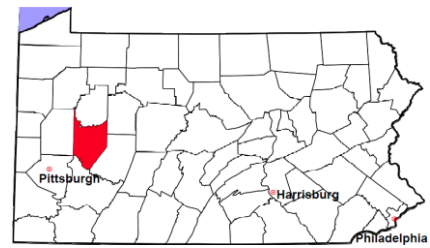


Case Type	Felony	Misdemeanor	Summary /Ungraded	Total
Person	37	76	0	113
Property	169	99	0	268
Drug	51	72	1	124
Weapon	9	1	0	10
Public Order	26	56	2	84
Motor Vehicle - DWI/DUI	0	221	1	222
Motor Vehicle - Other	0	8	0	8
Other	1	0	0	1
Total	293	533	4	830
	35.3%	64.2%	0.5%	100.0%

Data provided by CPCMS

Armstrong County

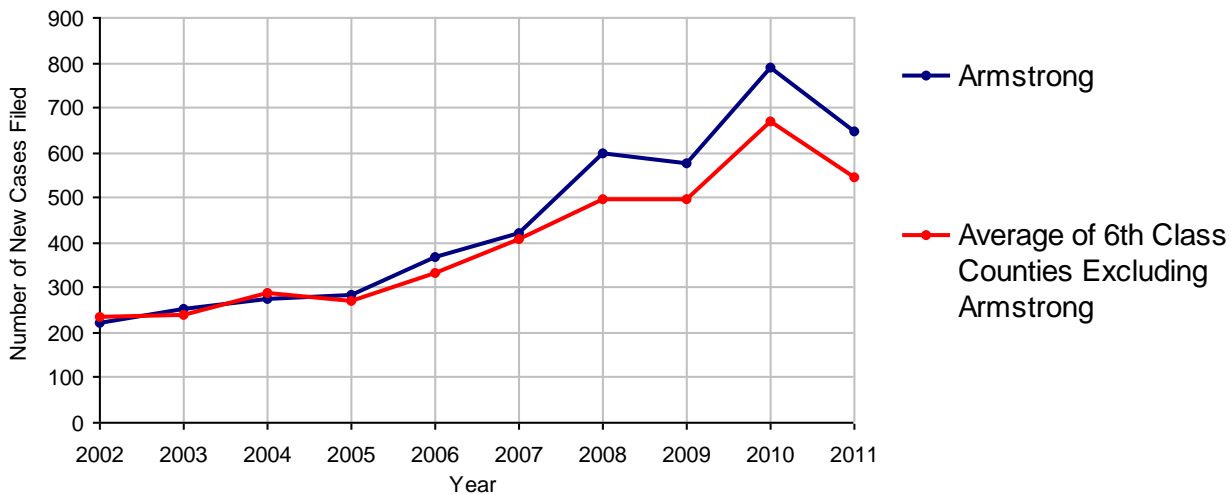
2011 Population Estimate: 68,568
 Class of County: 6th
 No. of Common Pleas Court Judgeships: 2



2011 Civil	Civil Action	Other	Total
Cases Pending 1/1/2011	485	361	846
Docketed Cases	405	244	649
Arbitration Appeals	0	0	0
Transferred In	0	0	0
Returned to Active	0	0	0
Cases Available for Processing	890	605	1,495
Disposed By:			
Default Judgments	201	96	297
Cases Decided by Arbitration Board	14	6	20
Dispositive Motions	5	6	11
Settlements	21	8	29
Moved to Inactive Status	0	0	0
Transferred/Withdrawn	0	6	6
Pa.R.J.A. 1901 Administrative Purge	0	0	0
Other	156	73	229
Jury Trial	2	0	2
Non-Jury Trial	0	0	0
Total Cases Disposed	399	195	594
Cases Pending 12/31/2011	491	410	901

Age of Pending Cases as of 12/31/2011 (Civil Action Only)		
0-6 months	125	25.5%
7-12 months	88	17.9%
13-18 months	71	14.5%
19-24 months	46	9.4%
25-30 months	51	10.4%
31-36 months	35	7.1%
37-42 months	20	4.1%
43-48 months	25	5.1%
49-54 months	4	0.8%
55-60 months	5	1.0%
61-66 months	7	1.4%
67-72 months	3	0.6%
Over 72 months	11	2.2%
Total	491	100.0%

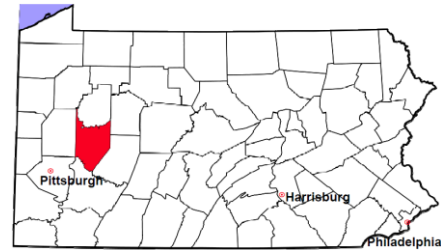
Docketed Cases, 2002-2011



Note: Prior to June 2010, docketed cases under the "Other" category were not reported. The reporting of these cases starting from June 2010 may contribute to an increase in docketed cases from 2009 to 2010.

Armstrong County

2011 Population Estimate: 68,568
 Class of County: 6th
 No. of Common Pleas Court Judgeships: 2



2011 Civil - Docketed Cases Listed by Case Type

TORT (does not include mass tort)

Intentional	3
Malicious Prosecution	0
Motor Vehicle	32
Nuisance	0
Premise Liability	8
Product Liability	2
Slander/Libel/Defamation	0
Other	22

MASS TORT

Asbestos	0
Tobacco	0
Toxic Tort - DES	0
Toxic Tort - Implant	0
Toxic Waste	0
Other	0

PROFESSIONAL LIABILITY

Dental	0
Legal	1
Medical Malpractice	2
Other	1

CONTRACT

(does not include judgments)

Buyer Plaintiff	7
Debt Collection:	
Credit Card	221
Debt Collection: Other	76
Employment Dispute:	
Discrimination	0
Employment Dispute: Other	1
Other	17

REAL PROPERTY

Ejectment*	20
Eminent Domain/ Condemnation*	2
Ground Rent	2
Landlord/Tenant Dispute	10
Mortgage Forclosures:	
Residential*	106
Commercial*	8
Partition of Real Property*	5
Quiet Title*	18
Other*	6

CIVIL APPEALS

Administrative Agencies

Board of Assessment*	2
Board of Elections*	2
Dept. of Transportation*	19
Zoning Board*	1
Statutory Appeal - Other*	3
Other*	9

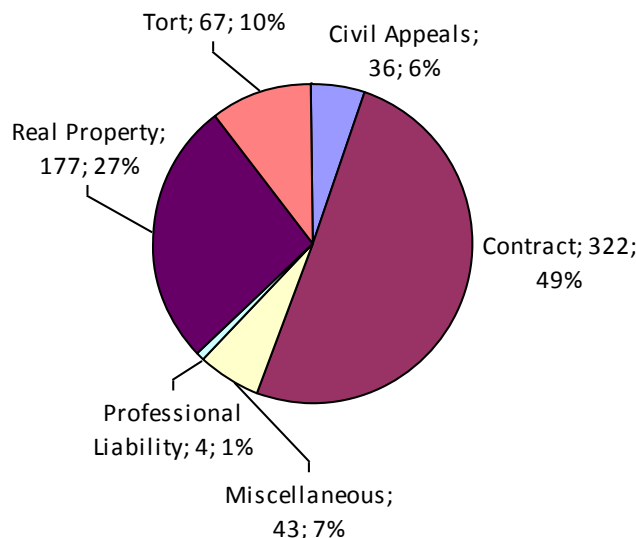
MISCELLANEOUS

Common Law/ Statutory Arbitration*	0
Declaratory Judgment*	6
Mandamus*	0
Non-Domestic Relations Restraining Order*	0
Quo Warranto*	1
Replevin*	9
Other*	27

TOTAL DOCKETED CASES:

649

* Civil Other



Of the Docketed Cases:

Pro Se Filings:	13	2.0%
Class Action Suits:	3	0.5%
MDJ Appeals:	42	6.5%

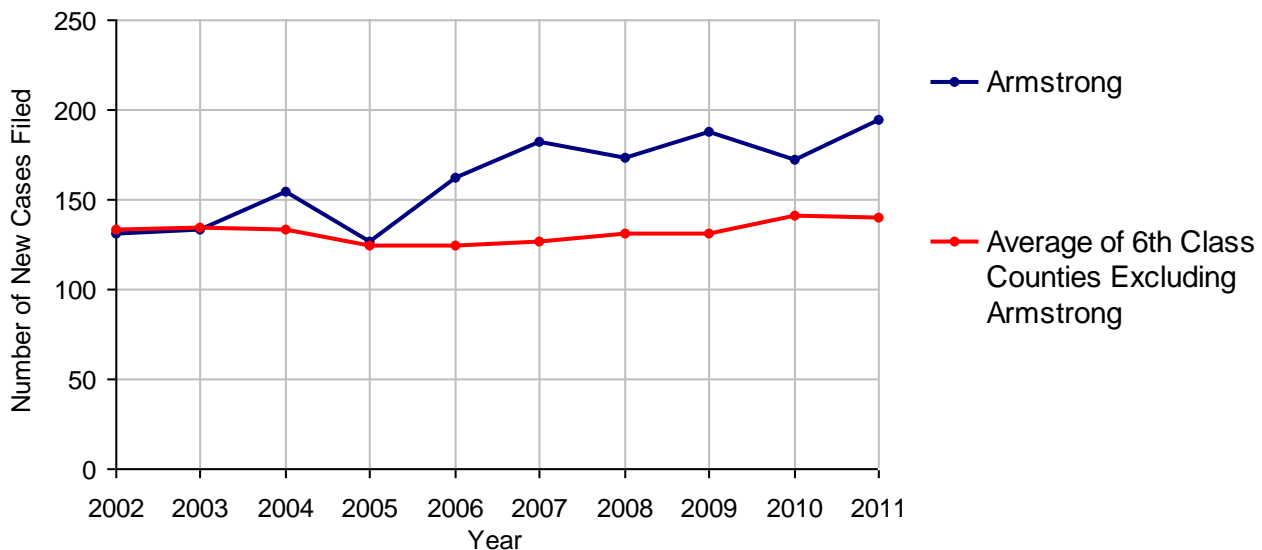
Armstrong County

2011 Population Estimate: 68,568
 Class of County: 6th
 No. of Common Pleas Court Judgeships: 2



2011 Protection From Abuse	No. of Petitions
Cases Pending 1/1/2011	12
New Cases Filed in 2011	195
<i>Of these, Petitions Requesting Temporary Orders: 195 (100.0%)</i>	
<i>Temporary Orders DENIED: 0 (0.0%), Temporary Orders GRANTED: 195 (100.0%)</i>	
Cases Available for Processing	207
Processed By:	
Temporary Order DENIED After Ex Parte Hearing and No Evidentiary Hearing Scheduled	0
Temporary Order DISMISSED After Evidentiary Hearing and No Final Order Entered	8 4.0%
Final Order DENIED After Evidentiary Hearing Before a Judge	4 2.0%
Final Order GRANTED After Evidentiary Hearing Before a Judge	16 8.1%
Plaintiff Did Not Appear For Evidentiary Hearing	15 7.6%
Final Order by STIPULATION OR AGREEMENT Between the Parties	70 35.4%
Petition WITHDRAWN by Plaintiff	50 25.3%
TRANSFERRED to Another Jurisdiction	0
DECEASED Party	0
Other	35 17.7%
Cases Processed	198 100.0%
Cases Pending 12/31/2011	9

PFA New Cases Filed, 2002-2011

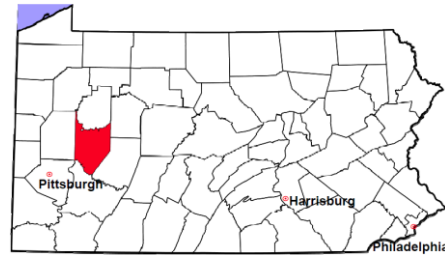


Armstrong County

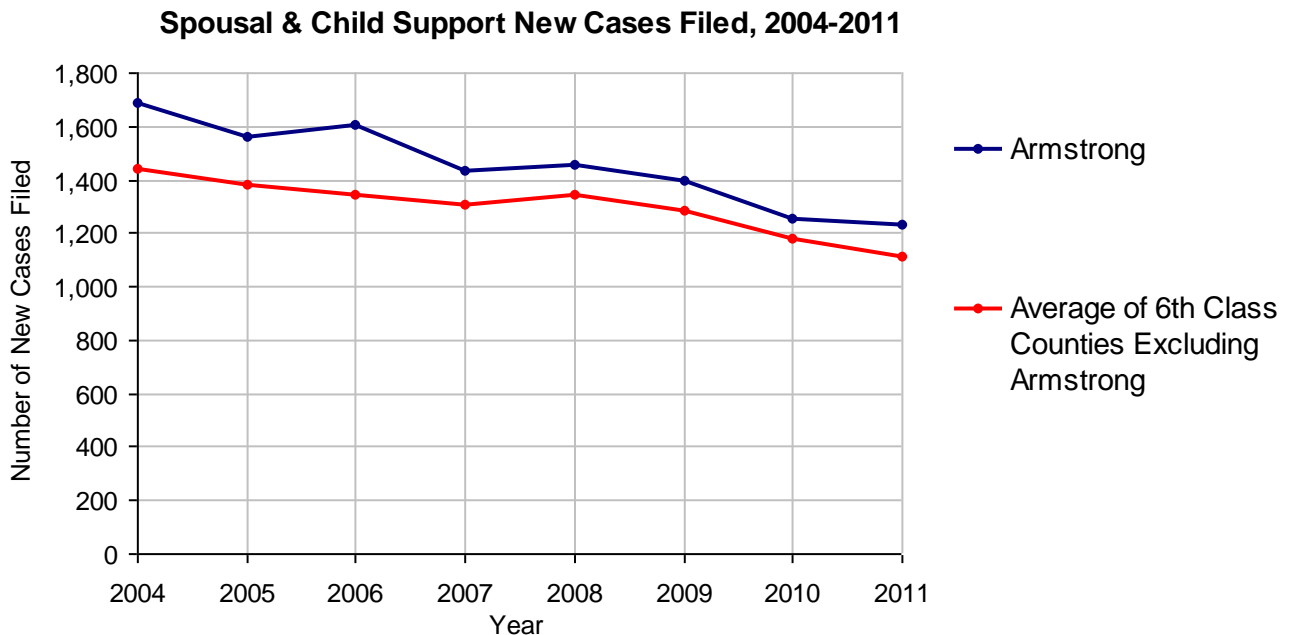
2011 Population Estimate: 68,568

Class of County: 6th

No. of Common Pleas Court Judgeships: 2



2011 Spousal & Child Support	No. of Petitions	
Cases Pending 1/1/2011	127	
New Cases Filed in 2011	1,230	
Dockets Transferred In (+)	9	
Dockets Transferred Out (-)	9	
Cases Available for Processing	1,357	
Processed By:		
Judge	13	1.0%
Intake Officer	1,131	91.1%
Hearing Officer	98	7.9%
Other	0	
Cases Processed	1,242	100.0%
Cases Pending 12/31/2011	115	

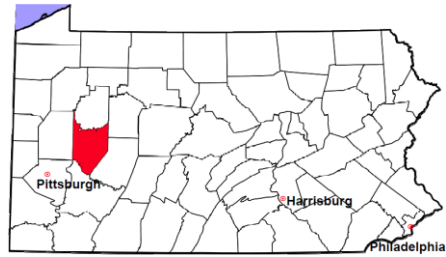


Armstrong County

2011 Population Estimate: 68,568

Class of County: 6th

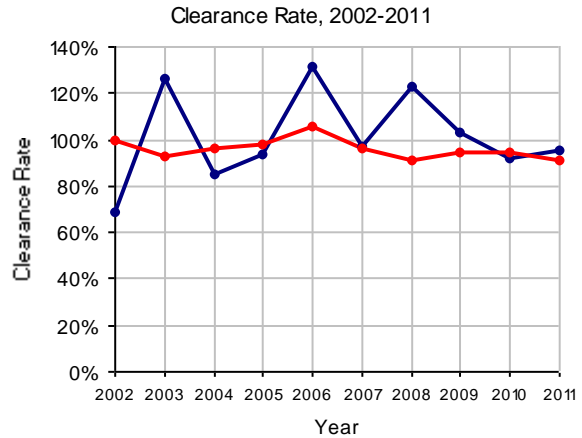
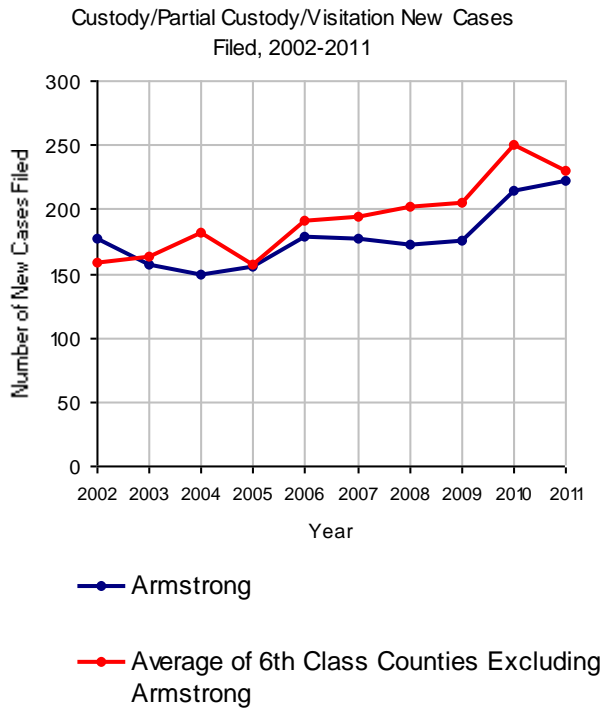
No. of Common Pleas Court Judgeships: 2



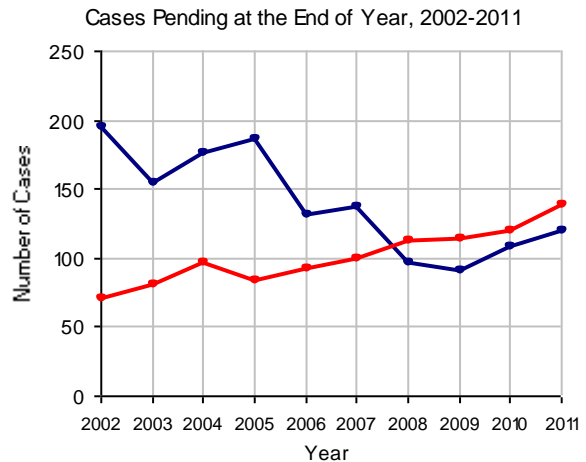
2011 Custody/Partial Custody/Visitation

No. of
Petitions

Cases Pending 1/1/2011	109
New Cases Filed in 2011	223
Cases Available for Processing	332
Processed By:	
Judge	45 21.2%
Non-Judicial Officer	0
Other	167 78.8%
Cases Processed	212 100.0%
Cases Pending 12/31/2011	120

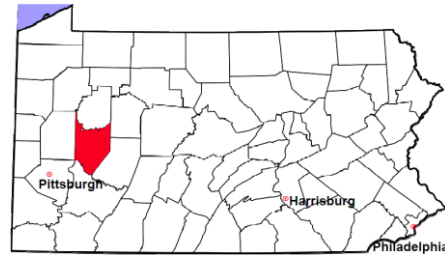


Note: Clearance Rate = Cases Processed / New Cases Filed



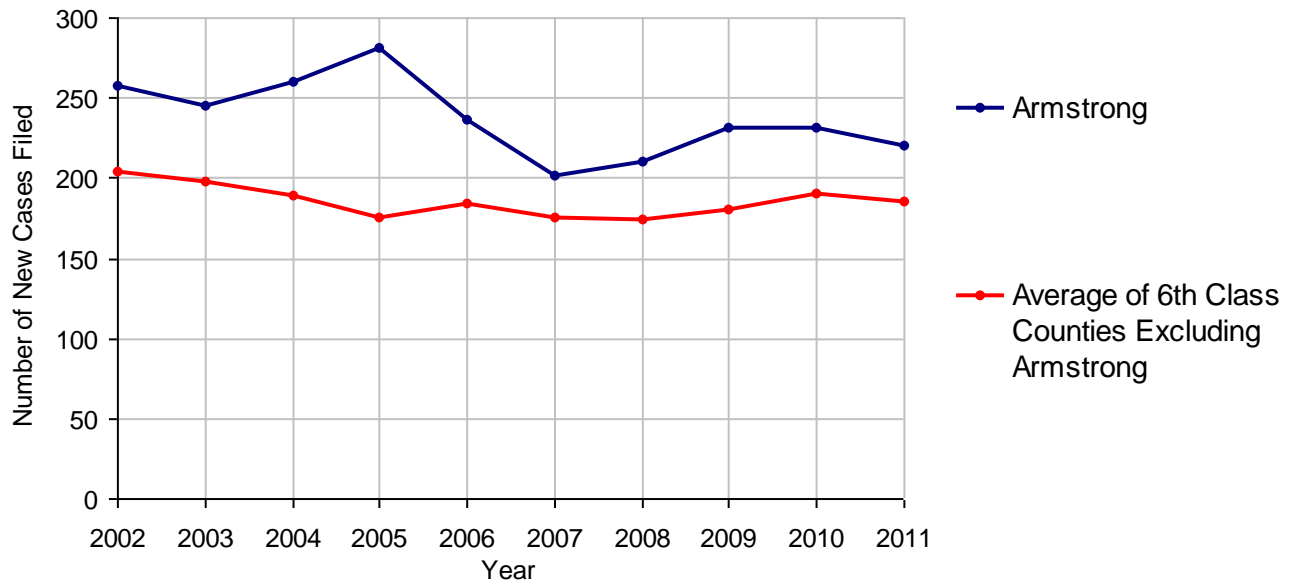
Armstrong County

2011 Population Estimate: 68,568
 Class of County: 6th
 No. of Common Pleas Court Judgeships: 2



2011 Divorce	No. of Petitions	
Cases Pending 1/1/2011	94	
New Cases Filed in 2011	220	
Cases Available for Processing	314	
Processed By:		
Contested Before a Judge	0	
Contested Before a Master	21	10.4%
Uncontested	155	76.7%
Other	26	12.9%
Cases Processed	202	100.0%
Cases Pending 12/31/2011	112	

Divorce New Cases Filed, 2002-2011

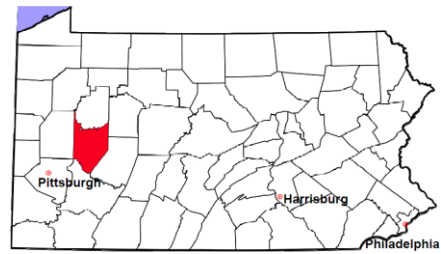


Armstrong County

2011 Population Estimate: 68,568

Class of County: 6th

No. of Common Pleas Court Judgeships: 2



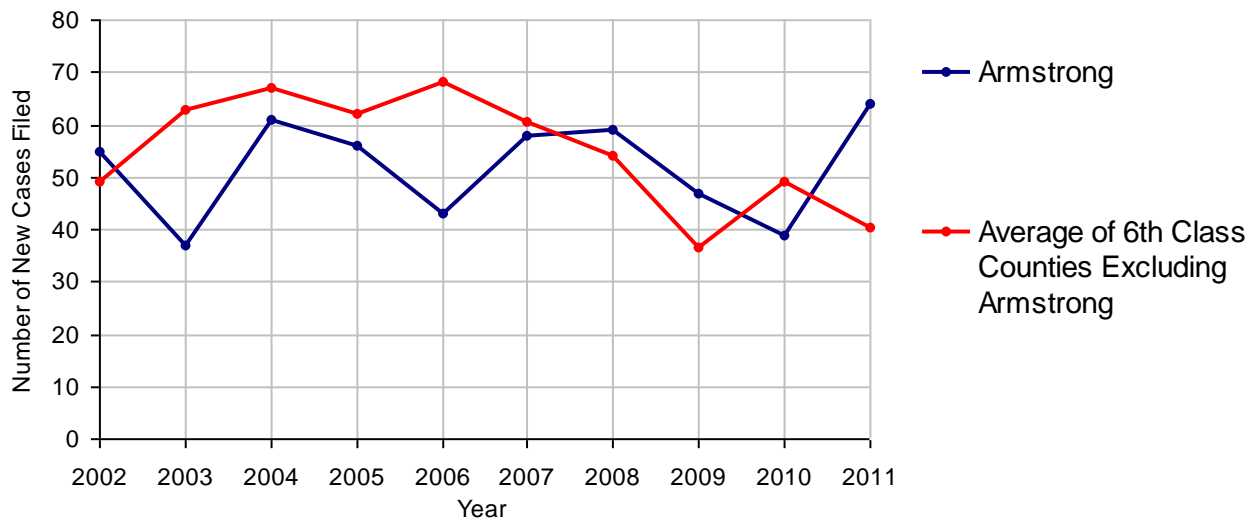
2011 Juvenile Dependency - Active Dependent Inventory



	Abuse/ Neglect	Status Offenses	Total
Cases Pending 1/1/2011	8	2	10
New Petitions Filed in 2011	42	22	64
Other	5	0	5
Total Petitions Available for Processing	55	24	79
Processed by:			
Adjudicated Dependent			
Judge	34	22	56
Master	0	0	0
Adjudicated NOT Dependent			
Judge	0	0	0
Master	0	0	0
Withdrawn/Dismissed/Inactive	1	0	1
Other	11	1	12
Total Petitions Processed	46	23	69
Cases Pending 12/31/2011	9	1	10

Data provided by CPCMS

Abuse/Neglect and Status Offenses New Cases Filed, 2002-2011



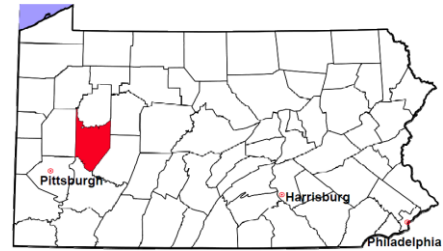
Note: Dependency data for 2002-2010 were collected manually. Dependency data for 2011 were provided by CPCMS.

Armstrong County

2011 Population Estimate: 68,568

Class of County: 6th

No. of Common Pleas Court Judgeships: 2



2011 Juvenile Dependency - Adjudicated Dependent Inventory

	Abuse/ Neglect	Status Offenses	Total	
Cases Pending 1/1/2011	75	13	88	
New Adjudicated Dependent Cases	34	22	56	
Other	3	2	5	
Total Adjudicated Dependent Cases	112	37	149	
<u>Court Supervision Terminated:</u>				
Family Reunification	8	3	11	19.3%
Adoption	11	0	11	19.3%
Placement with a Relative/Guardian	11	8	19	33.3%
Aged Out	4	1	5	8.8%
Other Permanency Outcomes*	1	0	1	1.8%
Other**	9	1	10	17.5%
Total Adjudicated Dependent Cases Terminated	44	13	57	100.0%
Cases Pending 12/31/2011	68	24	92	

Data provided by CPCMS

* Other Permanency Outcomes include: adjudicated delinquent, death due to natural causes, emancipation, permanent living arrangement, and parent has come forward.

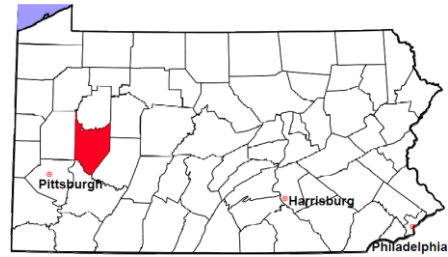
** Other includes cases where Court Supervision is terminated due to transfer out of jurisdiction, withdrawal and administrative closures.

Armstrong County

2011 Population Estimate: 68,568

Class of County: 6th

No. of Common Pleas Court Judgeships: 2

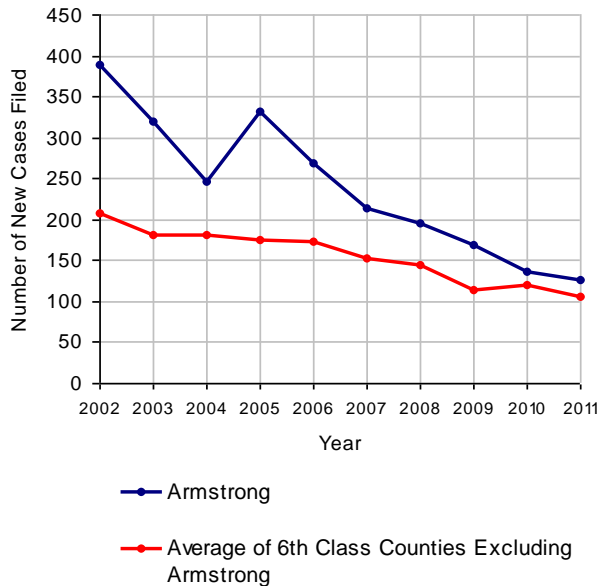


2011 Juvenile Delinquency

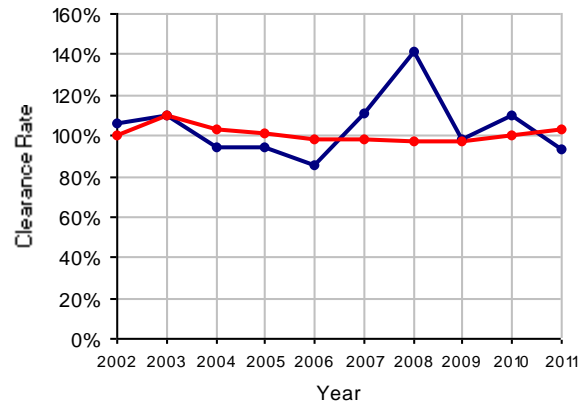
No. of Cases

Cases Pending 1/1/2011	25
New Cases Filed in 2011	126
Cases Available for Processing	151
Processed By:	
Judge	54 46.2%
Non-Judicial Officer	62 53.0%
Other	1 0.9%
Cases Processed	117 100.0%
Cases Pending 12/31/2011	34

Juvenile Delinquency New Cases Filed, 2002-2011

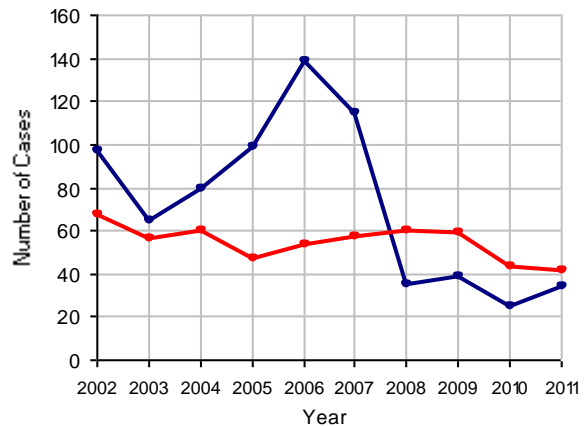


Clearance Rate, 2002-2011



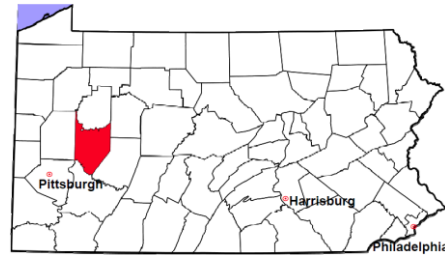
Note: Clearance Rate = Cases Processed / New Cases Filed

Cases Pending at the End of Year, 2002-2011



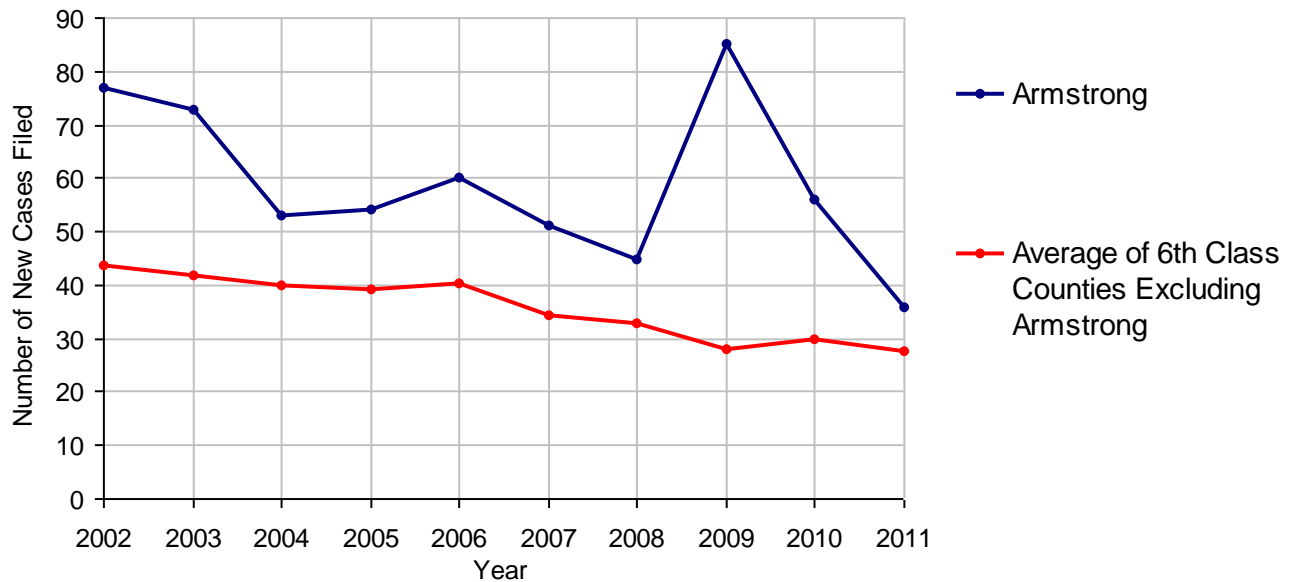
Armstrong County

2011 Population Estimate: 68,568
 Class of County: 6th
 No. of Common Pleas Court Judgeships: 2



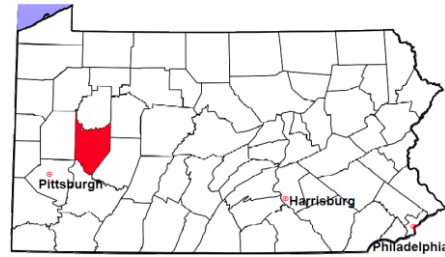
2011 Accounts	No. of Cases	
Cases Pending 1/1/2011	14	
New Cases Filed in 2011	36	
Cases Available for Processing	50	
Processed By:		
Contested before a Judge	0	
Contested before a Non-judicial Officer	0	
Uncontested	36	100.0%
Other	0	
Cases Processed	36	100.0%
Cases Pending 12/31/2011	14	

Accounts New Cases Filed, 2002-2011



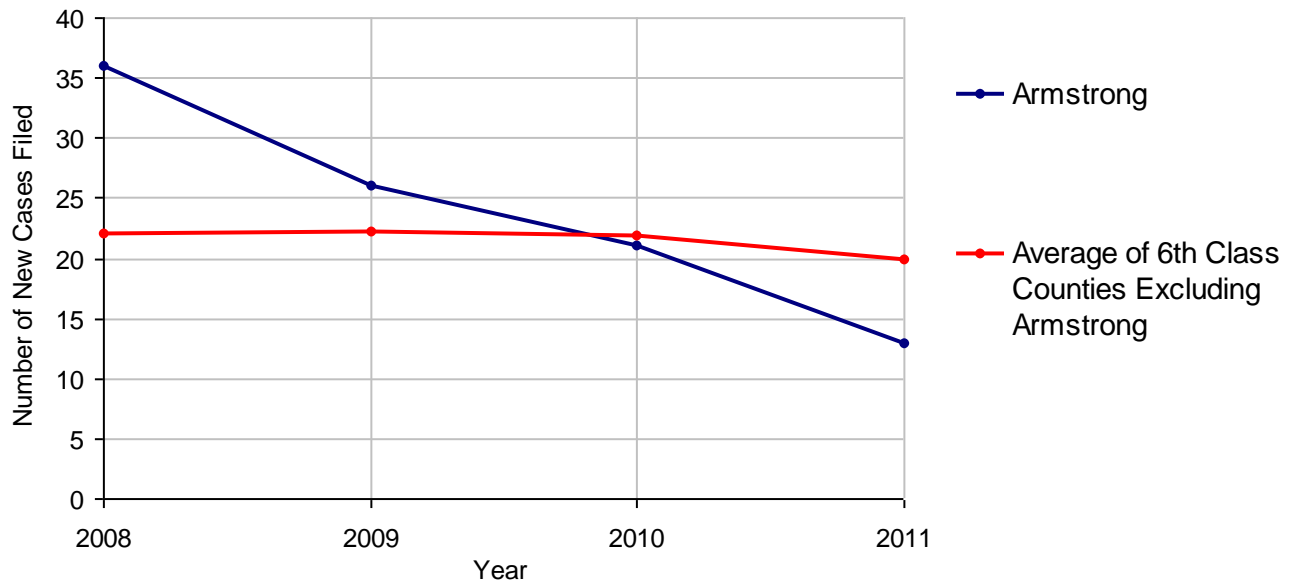
Armstrong County

2011 Population Estimate: 68,568
 Class of County: 6th
 No. of Common Pleas Court Judgeships: 2



2011 Adoptions		No. of Cases	
Cases Pending 1/1/2011		11	
New Cases Filed in 2011		13	
Cases Available for Processing		24	
Processed By:			
Contested before a Judge	Granted	0	
	Denied	0	
Uncontested	Granted	15	100.0%
	Denied	0	
Other		0	
Cases Processed		15	100.0%
Cases Pending 12/31/2011		9	

Adoptions New Cases Filed, 2008-2011



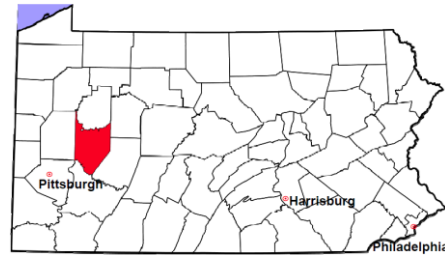
Note: Prior to 2008, each petition was counted as one new case, regardless of the number of children listed on the petition. Starting in 2008, each child listed on a petition is counted as a separate case. Therefore, statistics for the years since 2008 should not be compared to those for the years prior to 2008.

Armstrong County

2011 Population Estimate: 68,568

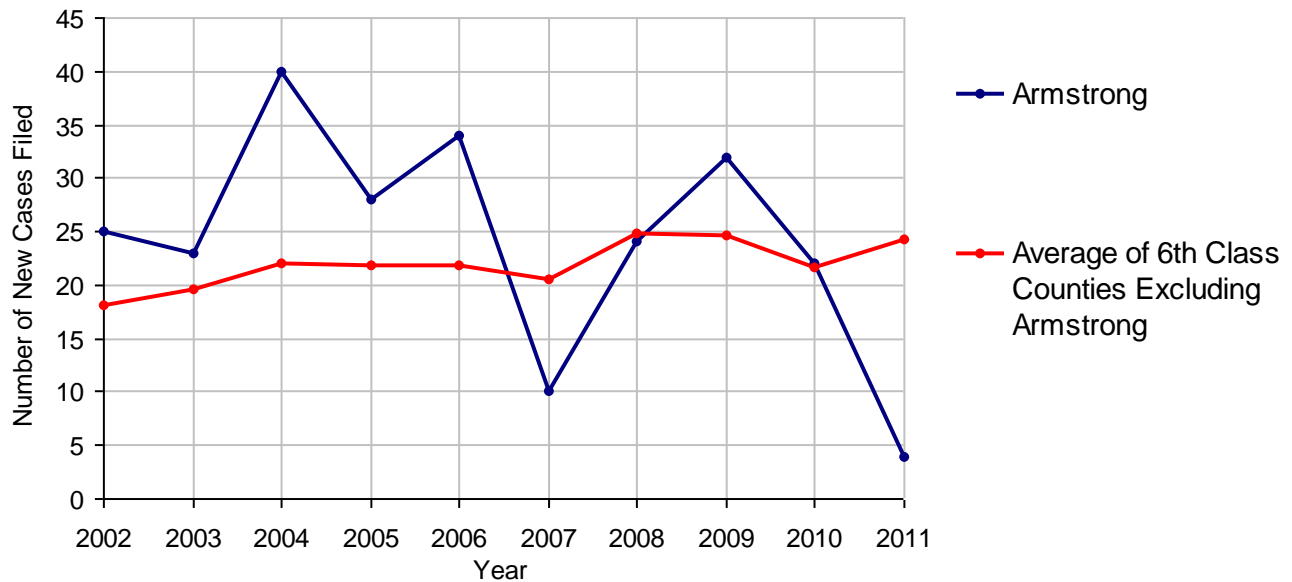
Class of County: 6th

No. of Common Pleas Court Judgeships: 2



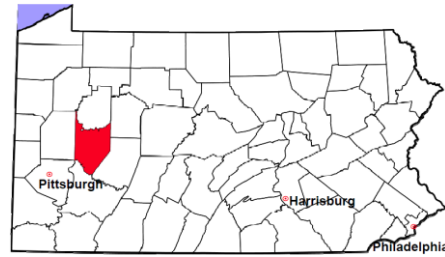
2011 Relinquishments/Terminations		No. of Cases	
Cases Pending 1/1/2011		26	
New Cases Filed in 2011		4	
Cases Available for Processing		30	
Processed By:			
Contested before a Judge		0	
Uncontested		10	47.6%
Other		11	52.4%
Cases Processed		21	100.0%
Cases Pending 12/31/2011		9	

Relinquishments/Terminations New Cases Filed, 2002-2011



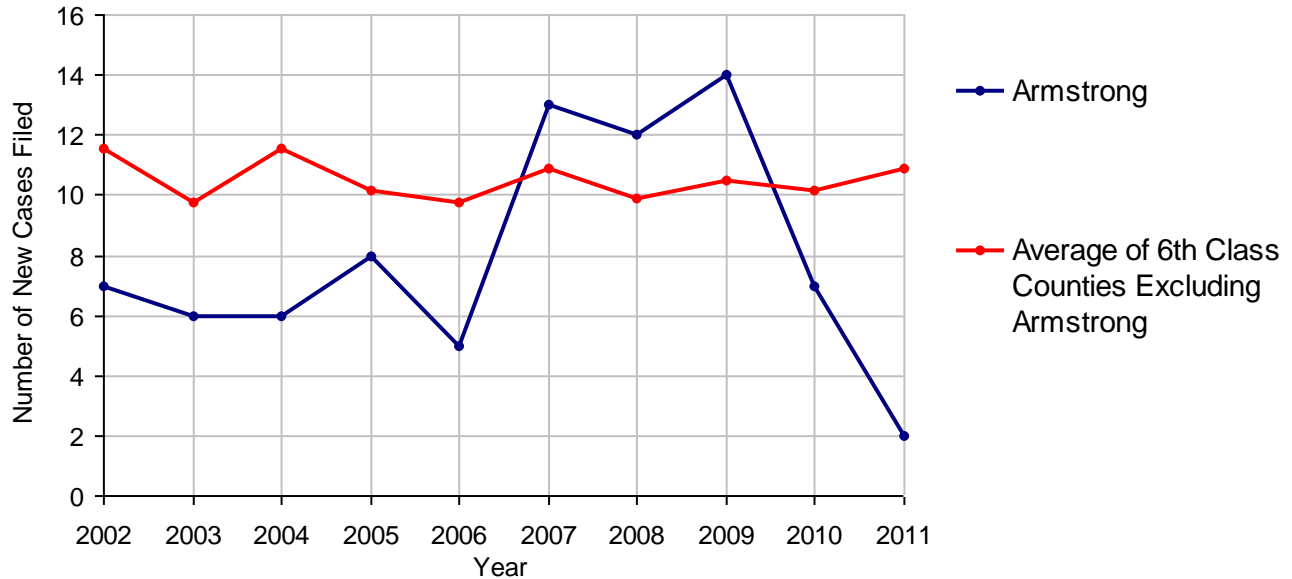
Armstrong County

2011 Population Estimate: 68,568
 Class of County: 6th
 No. of Common Pleas Court Judgeships: 2



2011 Appointment of Guardians	No. of Cases
Cases Pending 1/1/2011	7
New Cases Filed in 2011	2
Cases Available for Processing	9
Processed By:	
Contested before a Judge	0
Uncontested	5 100.0%
Other	0
Cases Processed	5 100.0%
Cases Pending 12/31/2011	4

Appointment of Guardians New Cases Filed, 2002-2011

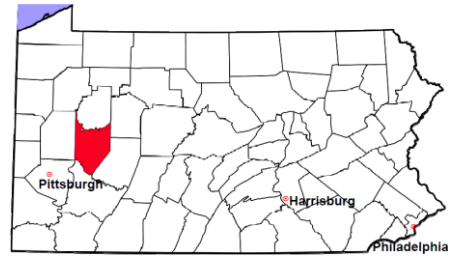


Armstrong County

2011 Population Estimate: 68,568

Class of County: 6th

No. of Common Pleas Court Judgeships: 2



2011 Jury Activity and Performance Measures

A. Juror Days	922
B. Number Sent to Voir Dire	435
Voir Dire Attendance Rate (B/A * 100)	47.2%
C. Number of Jurors Selected	126
Juror Selection Rate (C/B * 100)	29.0%

Note: In mid-2011, AOPC began utilizing the National Center for State Courts' Jury Managers' Toolbox for collecting jury data. This has resulted in limited jury performance measures being reported for 2011. Additional data will be available in 2012.