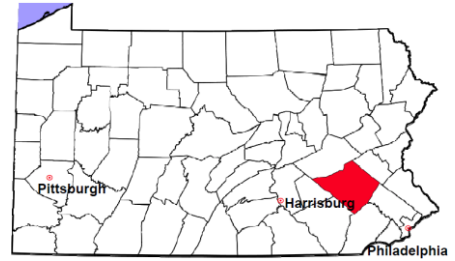


Berks County

2011 Population Estimate: 412,778
 Class of County: 3rd
 No. of Common Pleas Court Judgeships: 13

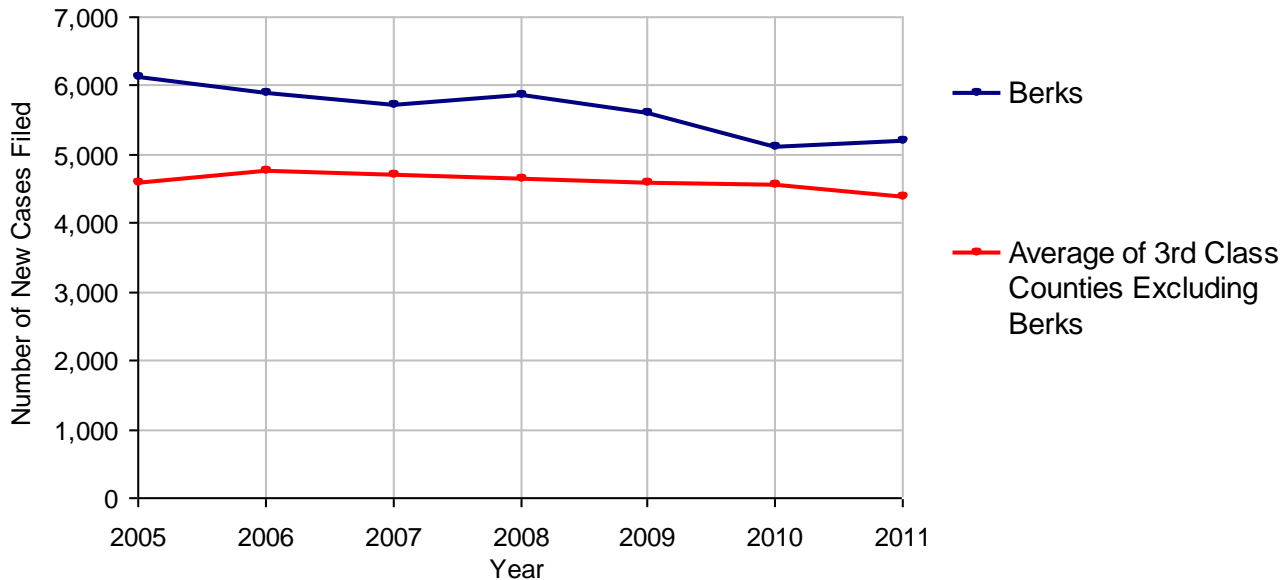


2011 Criminal	No. of Cases
Cases Pending 1/1/2011	2,203
New Cases Filed in 2011	5,249
Reopened Cases	475
Cases Available for Disposition	7,927
Disposed by:	
Withdrawn/Dismissed	357 6.3%
ARD	1,537 27.1%
Guilty Plea	3,371 59.5%
Non-Jury Trial	90 1.6%
Jury Trial	42 0.7%
Inactive	134 2.4%
Other	131 2.3%
Total Cases Disposed	5,662 100.0%
Cases Pending 12/31/2011	2,265
Cases Awaiting Sentencing	26



Age of Pending Cases as of 12/31/2011		
0-60 Days	882	38.9%
61-120 Days	510	22.5%
121-180 Days	232	10.2%
181-240 Days	158	7.0%
241-300 Days	143	6.3%
301-360 Days	93	4.1%
Over 360 Days	247	10.9%
Total	2,265	100.0%

Criminal New Cases Filed, 2005-2011

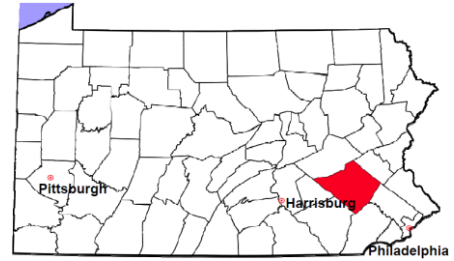


Berks County

2011 Population Estimate: 412,778

Class of County: 3rd

No. of Common Pleas Court Judgeships: 13



2011 Criminal - New Cases by Case Type



Case Type	Felony	Misdemeanor	Summary /Ungraded	Total
Person	313	489	0	802
Property	659	803	1	1,463
Drug	408	741	0	1,149
Weapon	80	36	0	116
Public Order	123	394	0	517
Motor Vehicle - DWI/DUI	0	1,179	1	1,180
Motor Vehicle - Other	0	20	1	21
Other	0	0	1	1
Total	1,583	3,662	4	5,249
	30.2%	69.8%	0.1%	100.0%

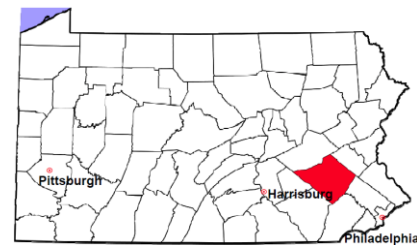
Data provided by CPCMS

Berks County

2011 Population Estimate: 412,778

Class of County: 3rd

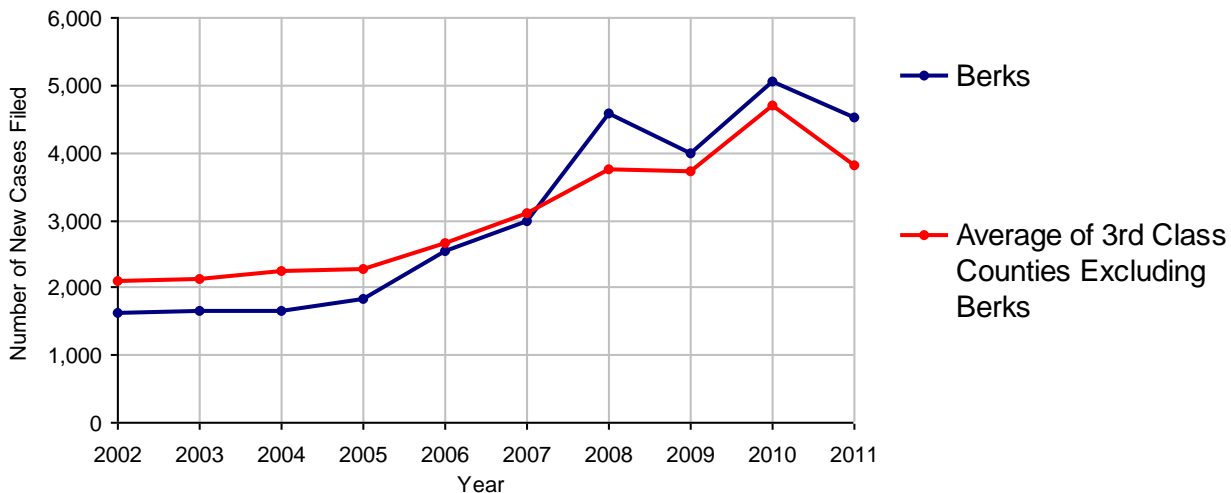
No. of Common Pleas Court Judgeships: 13



2011 Civil	Civil Action	Other	Total
Cases Pending 1/1/2011	3,967	3,272	7,239
Docketed Cases	2,777	1,740	4,517
Arbitration Appeals	21	8	29
Transferred In	9	1	10
Returned to Active	25	38	63
Cases Available for Processing	6,799	5,059	11,858
Disposed By:			
Default Judgments	1,012	712	1,724
Cases Decided by Arbitration Board	149	25	174
Dispositive Motions	122	304	426
Settlements	1,236	493	1,729
Moved to Inactive Status	103	42	145
Transferred/Withdrawn	144	211	355
Pa.R.J.A. 1901 Administrative Purge	557	344	901
Other	85	149	234
Jury Trial	14	5	19
Non-Jury Trial	14	4	18
Total Cases Disposed	3,436	2,289	5,725
Cases Pending 12/31/2011	3,363	2,770	6,133

Age of Pending Cases as of 12/31/2011 (Civil Action Only)		
0-6 months	1,052	31.3%
7-12 months	537	16.0%
13-18 months	496	14.7%
19-24 months	404	12.0%
25-30 months	244	7.3%
31-36 months	124	3.7%
37-42 months	125	3.7%
43-48 months	105	3.1%
49-54 months	53	1.6%
55-60 months	34	1.0%
61-66 months	32	1.0%
67-72 months	26	0.8%
Over 72 months	131	3.9%
Total	3,363	100.0%

Docketed Cases, 2002-2011



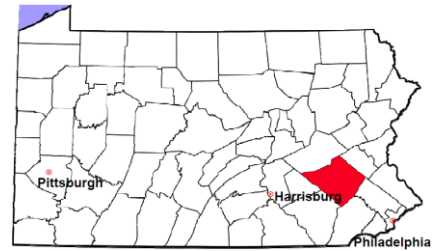
Note: Prior to June 2010, docketed cases under the "Other" category were not reported. The reporting of these cases starting from June 2010 may contribute to an increase in docketed cases from 2009 to 2010.

Berks County

2011 Population Estimate: 412,778

Class of County: 3rd

No. of Common Pleas Court Judgeships: 13



2011 Civil - Docketed Cases Listed by Case Type

TORT (does not include mass tort)

Intentional	12
Malicious Prosecution	0
Motor Vehicle	341
Nuisance	0
Premise Liability	121
Product Liability	5
Slander/Libel/Defamation	7
Other	89

MASS TORT

Asbestos	1
Tobacco	0
Toxic Tort - DES	0
Toxic Tort - Implant	0
Toxic Waste	0
Other	0

PROFESSIONAL LIABILITY

Dental	0
Legal	10
Medical Malpractice	22
Other	6

CONTRACT

(does not include judgments)

Buyer Plaintiff	32
Debt Collection:	
Credit Card	1,229
Other	645
Employment Dispute:	
Discrimination	2
Other	6
Other	178

REAL PROPERTY

Ejectment*	136
Eminent Domain/ Condemnation*	13
Ground Rent	1
Landlord/Tenant Dispute	70
Mortgage Forclosures:	
Residential*	960
Commercial*	23
Partition of Real Property*	7
Quiet Title*	19
Other*	36

CIVIL APPEALS

Administrative Agencies

Board of Assessment*	54
Board of Elections*	0
Dept. of Transportation*	106
Zoning Board*	12
Statutory Appeal - Other*	8
Other*	85

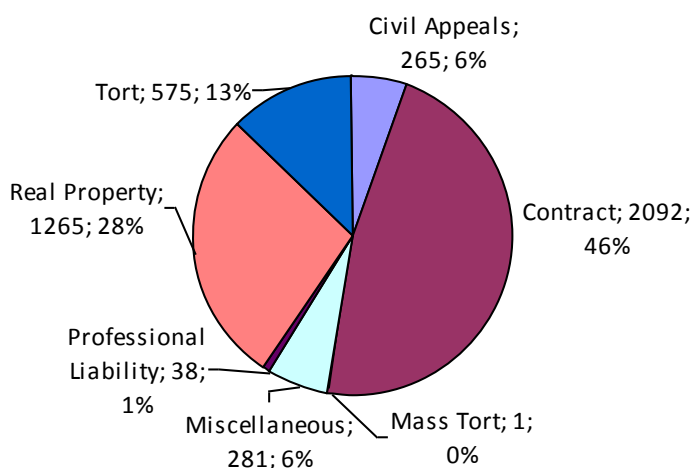
MISCELLANEOUS

Common Law/ Statutory Arbitration*	2
Declaratory Judgment*	14
Mandamus*	6
Non-Domestic Relations Restraining Order*	1
Quo Warranto*	0
Replevin*	27
Other*	231

TOTAL DOCKETED CASES:

4,517

* Civil Other



Of the Docketed Cases:

Pro Se Filings:	160	3.5%
Class Action Suits:	1	<0.1%
MDJ Appeals:	246	5.4%

Berks County

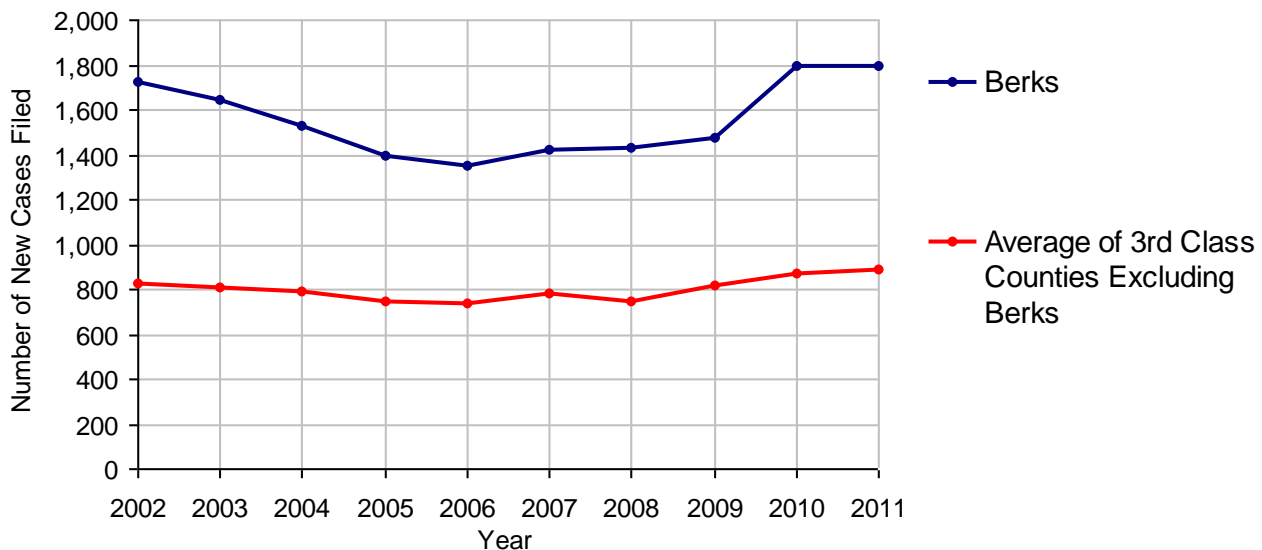
2011 Population Estimate: 412,778
 Class of County: 3rd
 No. of Common Pleas Court Judgeships: 13



2011 Protection From Abuse

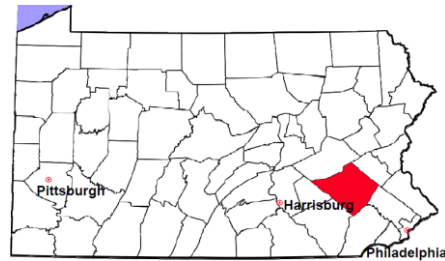
	No. of Petitions
Cases Pending 1/1/2011	168
New Cases Filed in 2011	1,796
<i>Of these, Petitions Requesting Temporary Orders: 1,796 (100.0%)</i>	
<i>Temporary Orders DENIED: 263 (14.6%), Temporary Orders GRANTED: 1,533 (85.4%)</i>	
Cases Available for Processing	1,964
Processed By:	
Temporary Order DENIED After Ex Parte Hearing and No Evidentiary Hearing Scheduled	0
Temporary Order DISMISSED After Evidentiary Hearing and No Final Order Entered	208 11.6%
Final Order DENIED After Evidentiary Hearing Before a Judge	105 5.9%
Final Order GRANTED After Evidentiary Hearing Before a Judge	202 11.3%
Plaintiff Did Not Appear For Evidentiary Hearing	356 19.9%
Final Order by STIPULATION OR AGREEMENT Between the Parties	399 22.3%
Petition WITHDRAWN by Plaintiff	510 28.5%
TRANSFERRED to Another Jurisdiction	0
DECEASED Party	0
Other	10 0.6%
Cases Processed	1,790 100.0%
Cases Pending 12/31/2011	174

PFA New Cases Filed, 2002-2011

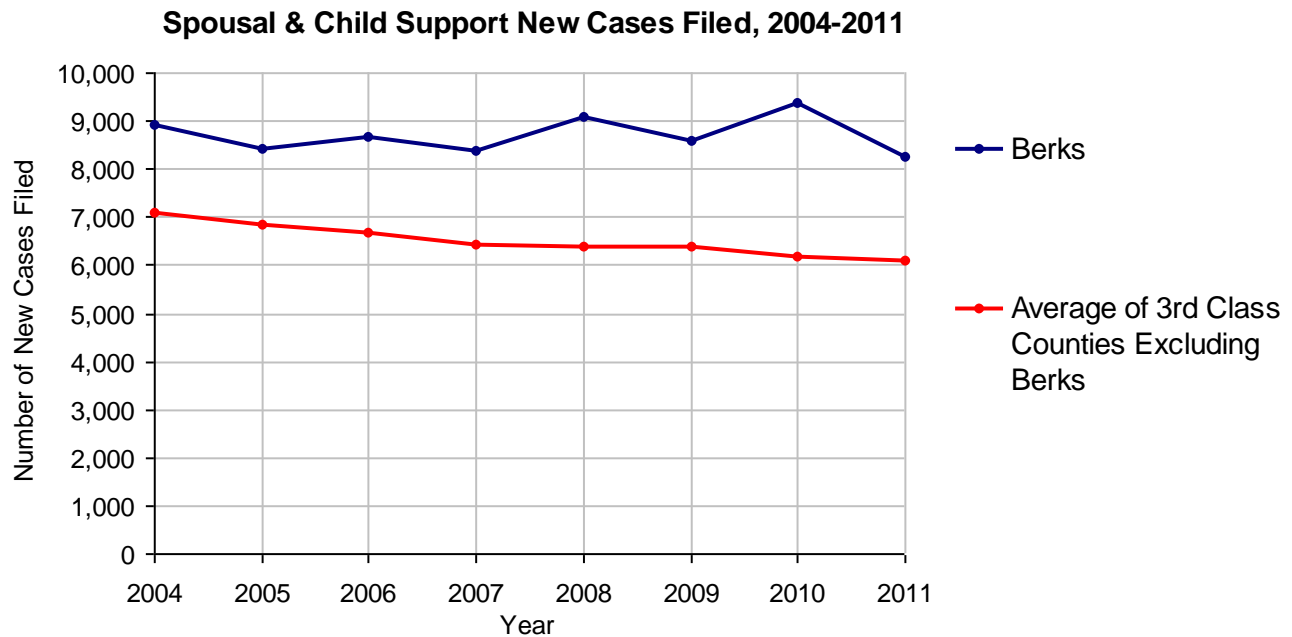


Berks County

2011 Population Estimate: 412,778
 Class of County: 3rd
 No. of Common Pleas Court Judgeships: 13



2011 Spousal & Child Support	No. of Petitions	
Cases Pending 1/1/2011	2,861	
New Cases Filed in 2011	8,269	
Dockets Transferred In (+)	97	
Dockets Transferred Out (-)	151	
Cases Available for Processing	11,076	
Processed By:		
Judge	160	1.9%
Intake Officer	7,616	88.1%
Hearing Officer	865	10.0%
Other	3	<0.1%
Cases Processed	8,644	100.0%
Cases Pending 12/31/2011	2,432	

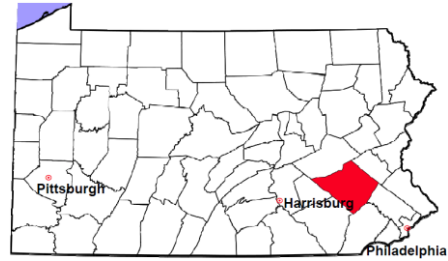


Berks County

2011 Population Estimate: 412,778

Class of County: 3rd

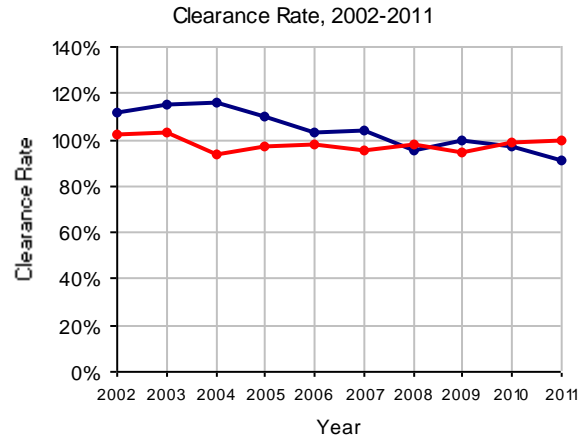
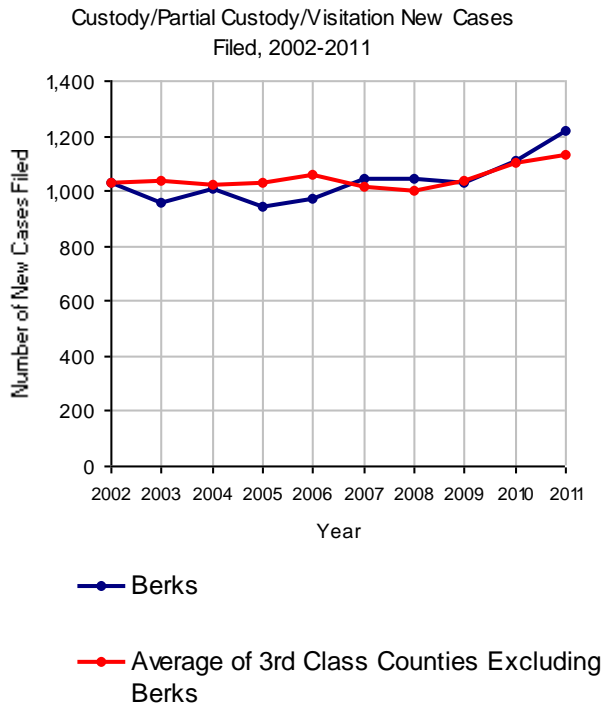
No. of Common Pleas Court Judgeships: 13



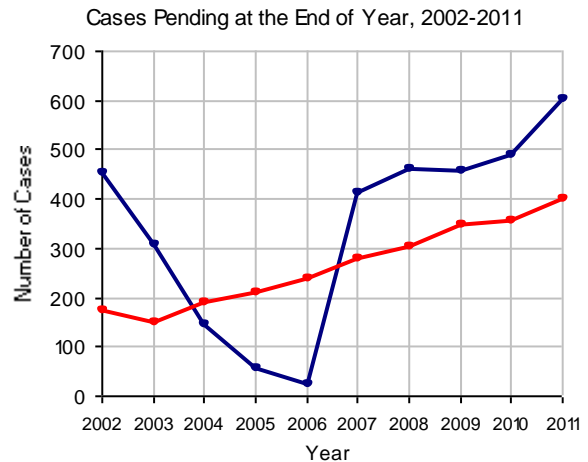
2011 Custody/Partial Custody/Visitation

No. of
Petitions

Cases Pending 1/1/2011	490
New Cases Filed in 2011	1,216
Cases Available for Processing	1,706
Processed By:	
Judge	639 57.9%
Non-Judicial Officer	320 29.0%
Other	145 13.1%
Cases Processed	1,104 100.0%
Cases Pending 12/31/2011	602

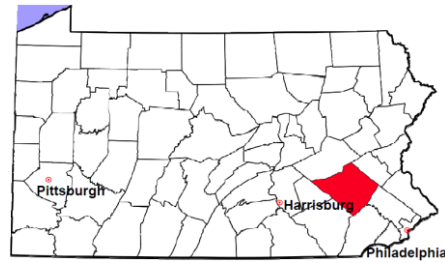


Note: Clearance Rate = Cases Processed / New Cases Filed



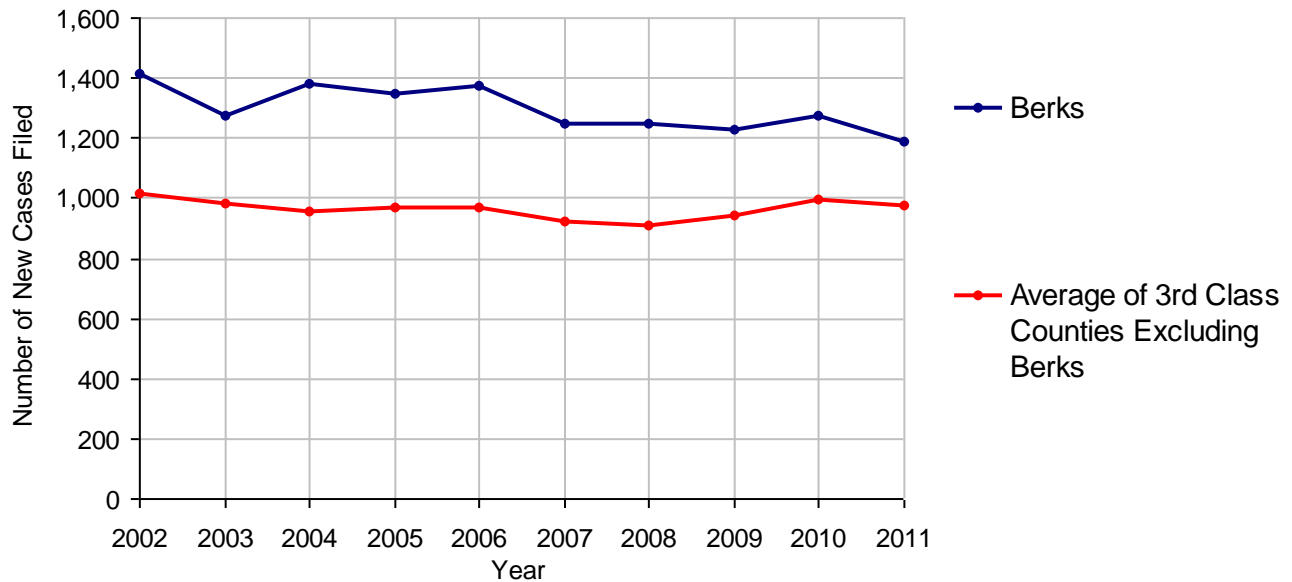
Berks County

2011 Population Estimate: 412,778
 Class of County: 3rd
 No. of Common Pleas Court Judgeships: 13



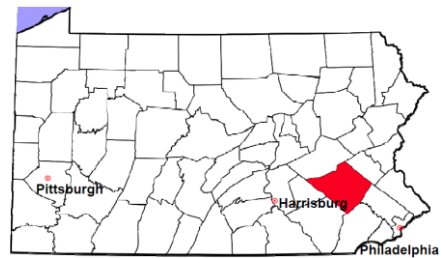
2011 Divorce	No. of Petitions	
Cases Pending 1/1/2011	2,570	
New Cases Filed in 2011	1,188	
Cases Available for Processing	3,758	
Processed By:		
Contested Before a Judge	28	2.3%
Contested Before a Master	80	6.6%
Uncontested	929	76.3%
Other	181	14.9%
Cases Processed	1,218	100.0%
Cases Pending 12/31/2011	2,540	

Divorce New Cases Filed, 2002-2011



Berks County

2011 Population Estimate: 412,778
 Class of County: 3rd
 No. of Common Pleas Court Judgeships: 13



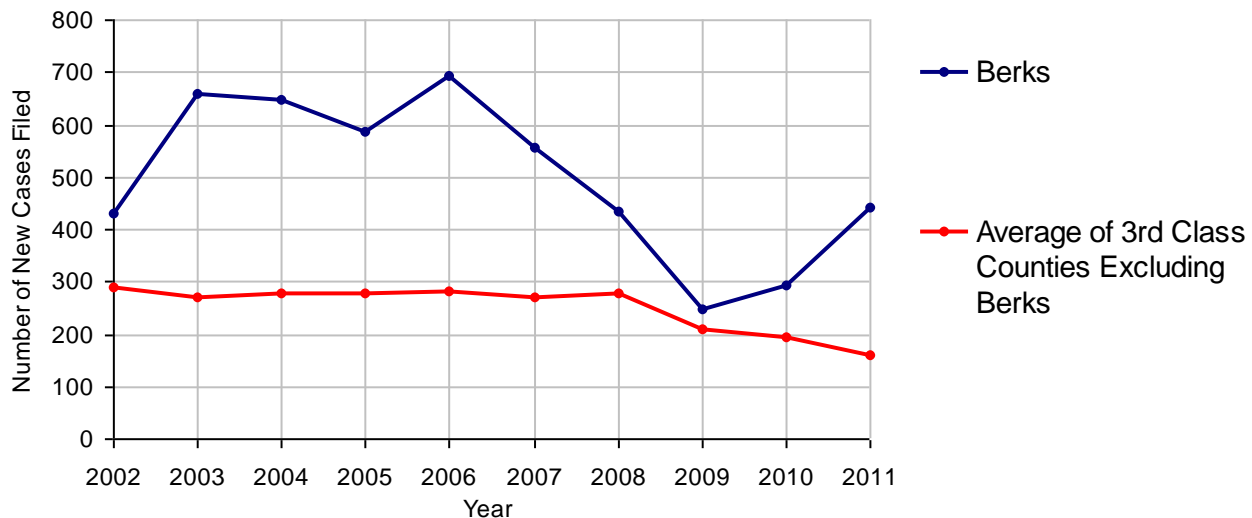
2011 Juvenile Dependency - Active Dependent Inventory



	Abuse/ Neglect	Status Offenses	Total
Cases Pending 1/1/2011	22	0	22
New Petitions Filed in 2011	441	1	442
Other	0	0	0
Total Petitions Available for Processing	463	1	464
Processed by:			
Adjudicated Dependent			
Judge	373	1	374
Master	0	0	0
Adjudicated NOT Dependent			
Judge	5	0	5
Master	0	0	0
Withdrawn/Dismissed/Inactive	32	0	32
Other	2	0	2
Total Petitions Processed	412	1	413
Cases Pending 12/31/2011	51	0	51

Data provided by CPCMS

Abuse/Neglect and Status Offenses New Cases Filed, 2002-2011



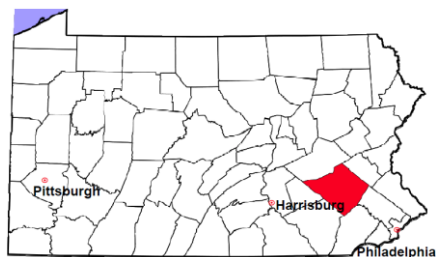
Note: Dependency data for 2002-2010 were collected manually. Dependency data for 2011 were provided by CPCMS.

Berks County

2011 Population Estimate: 412,778

Class of County: 3rd

No. of Common Pleas Court Judgeships: 13



2011 Juvenile Dependency - Adjudicated Dependent Inventory



	Abuse/ Neglect	Status Offenses	Total	
Cases Pending 1/1/2011	563	26	589	
New Adjudicated Dependent Cases	373	1	374	
Other	1	0	1	
Total Adjudicated Dependent Cases	937	27	964	
<u>Court Supervision Terminated:</u>				
Family Reunification	7	1	8	3.0%
Adoption	97	1	98	36.7%
Placement with a Relative/Guardian	100	3	103	38.6%
Aged Out	39	6	45	16.9%
Other Permanency Outcomes*	5	0	5	1.9%
Other**	8	0	8	3.0%
Total Adjudicated Dependent Cases Terminated	256	11	267	100.0%
Cases Pending 12/31/2011	681	16	697	

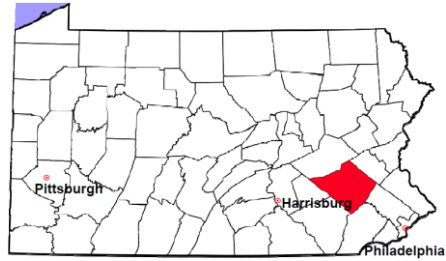
Data provided by CPCMS

* Other Permanency Outcomes include: adjudicated delinquent, death due to natural causes, emancipation, permanent living arrangement, and parent has come forward.

** Other includes cases where Court Supervision is terminated due to transfer out of jurisdiction, withdrawal and administrative closures.

Berks County

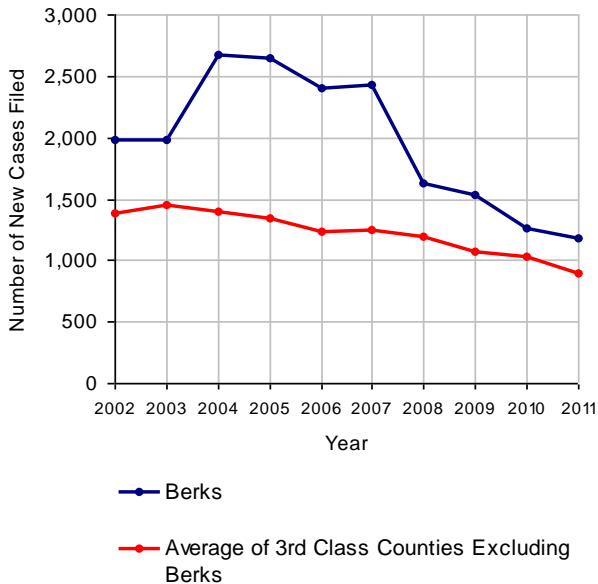
2011 Population Estimate: 412,778
 Class of County: 3rd
 No. of Common Pleas Court Judgeships: 13



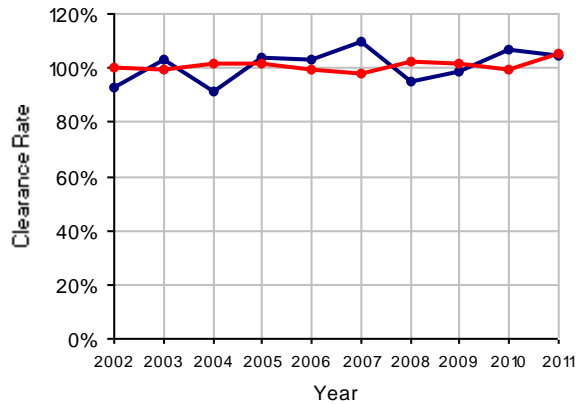
2011 Juvenile Delinquency

	No. of Cases
Cases Pending 1/1/2011	378
New Cases Filed in 2011	1,175
Cases Available for Processing	1,553
Processed By:	
Judge	714 58.1%
Non-Judicial Officer	385 31.4%
Other	129 10.5%
Cases Processed	1,228 100.0%
Cases Pending 12/31/2011	325

Juvenile Delinquency New Cases Filed, 2002-2011

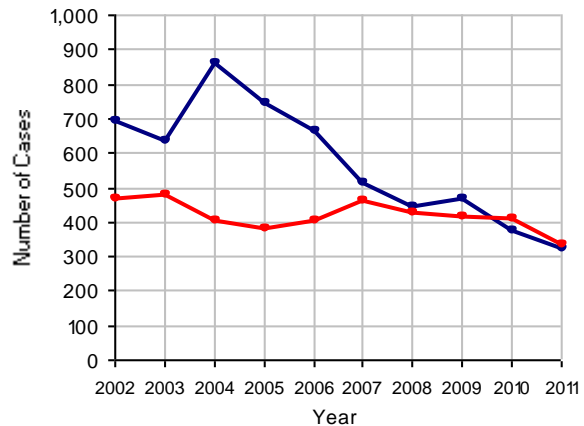


Clearance Rate, 2002-2011



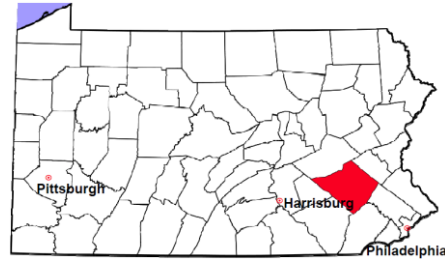
Note: Clearance Rate = Cases Processed / New Cases Filed

Cases Pending at the End of Year, 2002-2011



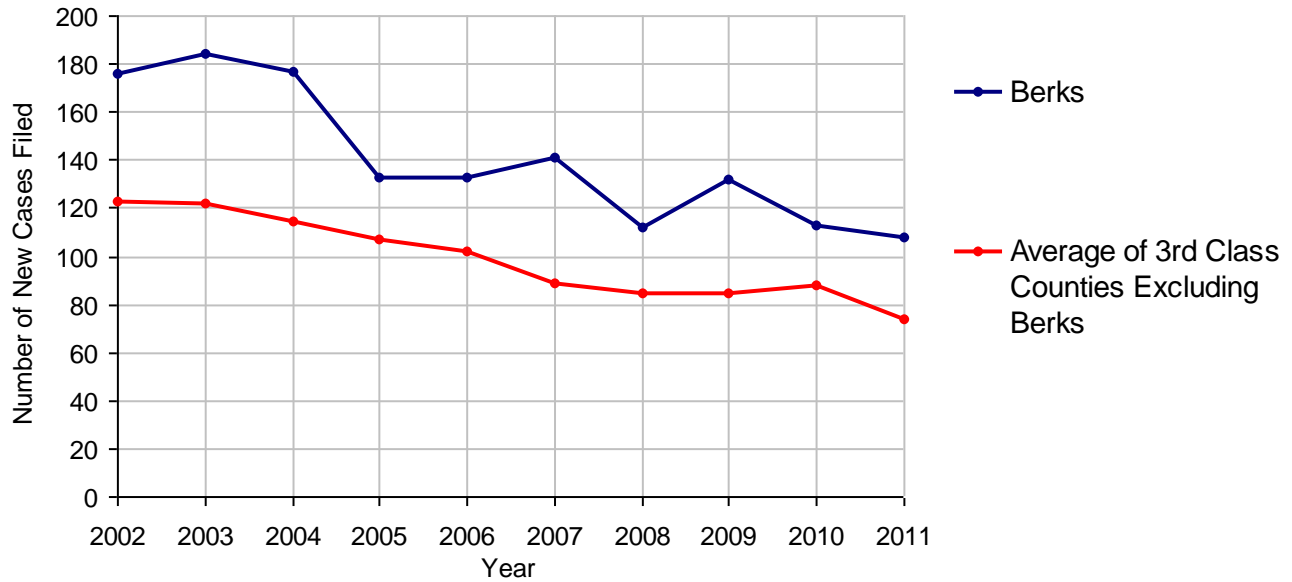
Berks County

2011 Population Estimate: 412,778
 Class of County: 3rd
 No. of Common Pleas Court Judgeships: 13



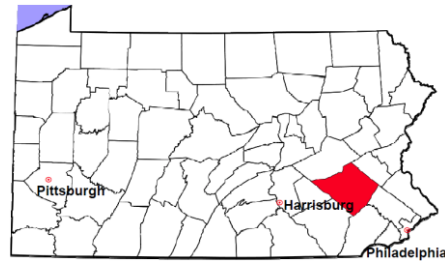
2011 Accounts	No. of Cases
Cases Pending 1/1/2011	41
New Cases Filed in 2011	108
Cases Available for Processing	149
Processed By:	
Contested before a Judge	3 2.7%
Contested before a Non-judicial Officer	0
Uncontested	109 97.3%
Other	0
Cases Processed	112 100.0%
Cases Pending 12/31/2011	37

Accounts New Cases Filed, 2002-2011



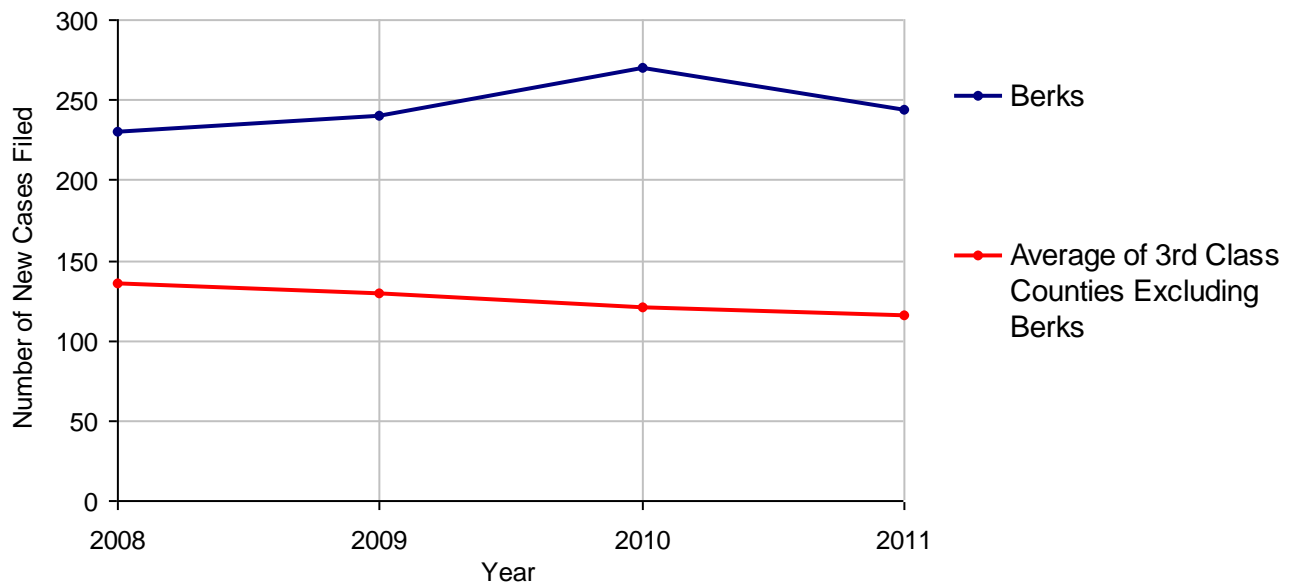
Berks County

2011 Population Estimate: 412,778
 Class of County: 3rd
 No. of Common Pleas Court Judgeships: 13



2011 Adoptions		No. of Cases	
Cases Pending 1/1/2011		18	
New Cases Filed in 2011		244	
Cases Available for Processing		262	
Processed By:			
Contested before a Judge	Granted	1	0.4%
	Denied	1	0.4%
Uncontested	Granted	236	98.3%
	Denied	0	
Other		2	0.8%
Cases Processed		240	100.0%
Cases Pending 12/31/2011		22	

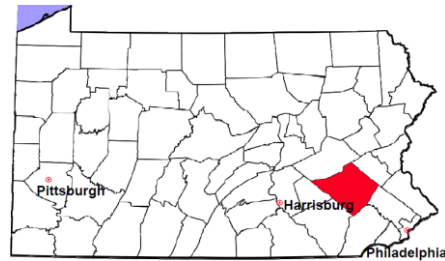
Adoptions New Cases Filed, 2008-2011



Note: Prior to 2008, each petition was counted as one new case, regardless of the number of children listed on the petition. Starting in 2008, each child listed on a petition is counted as a separate case. Therefore, statistics for the years since 2008 should not be compared to those for the years prior to 2008.

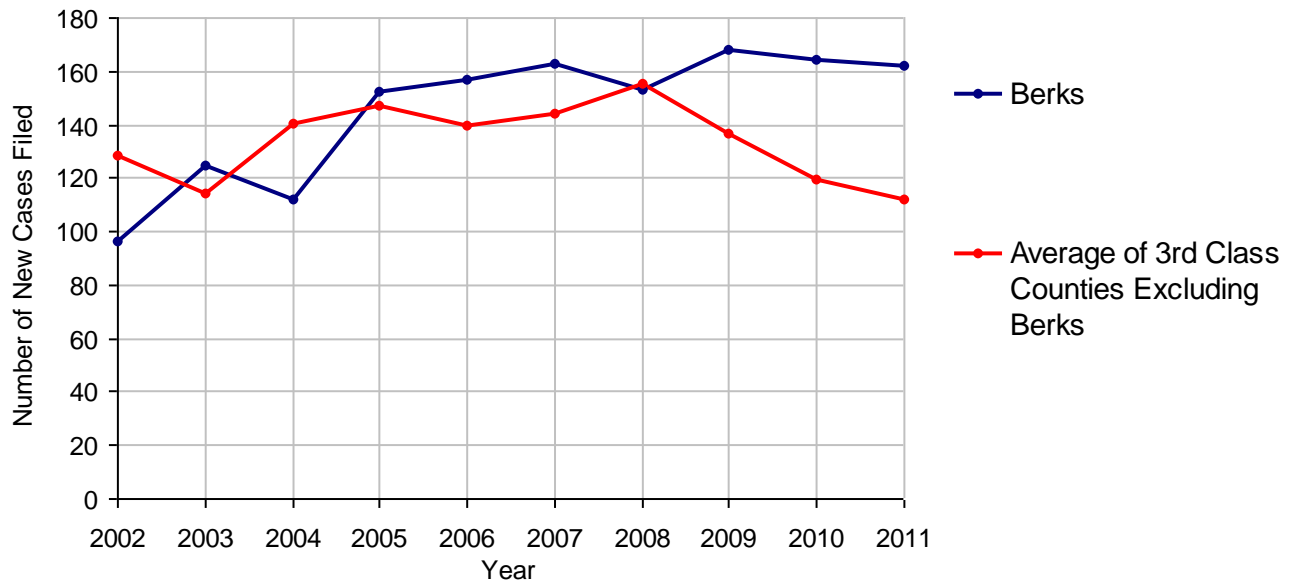
Berks County

2011 Population Estimate: 412,778
 Class of County: 3rd
 No. of Common Pleas Court Judgeships: 13



2011 Relinquishments/Terminations	No. of Cases
Cases Pending 1/1/2011	31
New Cases Filed in 2011	162
Cases Available for Processing	193
Processed By:	
Contested before a Judge	37 23.1%
Uncontested	123 76.9%
Other	0
Cases Processed	160 100.0%
Cases Pending 12/31/2011	33

Relinquishments/Terminations New Cases Filed, 2002-2011



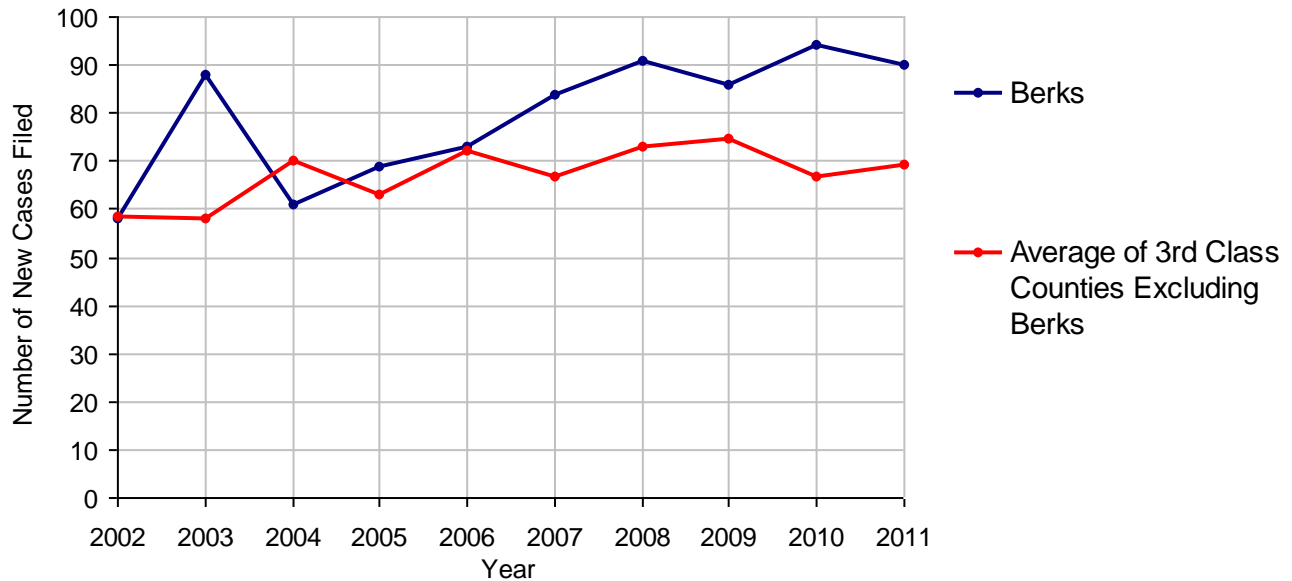
Berks County

2011 Population Estimate: 412,778
 Class of County: 3rd
 No. of Common Pleas Court Judgeships: 13



2011 Appointment of Guardians		No. of Cases
Cases Pending 1/1/2011		25
New Cases Filed in 2011		90
Cases Available for Processing		115
Processed By:		
Contested before a Judge	4	3.6%
Uncontested	99	89.2%
Other	8	7.2%
Cases Processed	111	100.0%
Cases Pending 12/31/2011		4

Appointment of Guardians New Cases Filed, 2002-2011

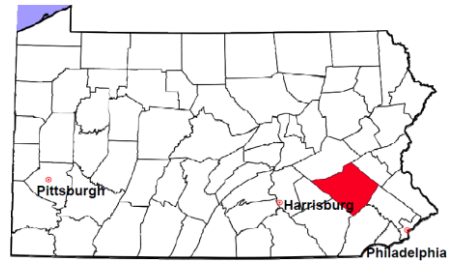


Berks County

2011 Population Estimate: 412,778

Class of County: 3rd

No. of Common Pleas Court Judgeships: 13



2011 Jury Activity and Performance Measures

A. Juror Days	4,696
B. Number Sent to Voir Dire	4,000
Voir Dire Attendance Rate (B/A * 100)	85.2%
C. Number of Jurors Selected	1,188
Juror Selection Rate (C/B * 100)	29.7%

Note: In mid-2011, AOPC began utilizing the National Center for State Courts' Jury Managers' Toolbox for collecting jury data. This has resulted in limited jury performance measures being reported for 2011. Additional data will be available in 2012.