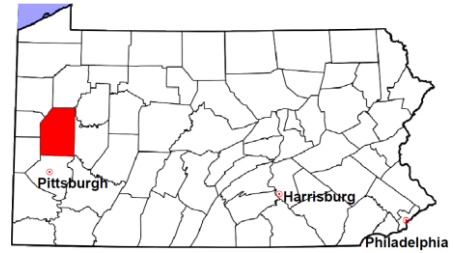


Butler County

2011 Population Estimate: 184,848
 Class of County: 4th
 No. of Common Pleas Court Judgeships: 6



2011 Criminal	No. of Cases
---------------	--------------

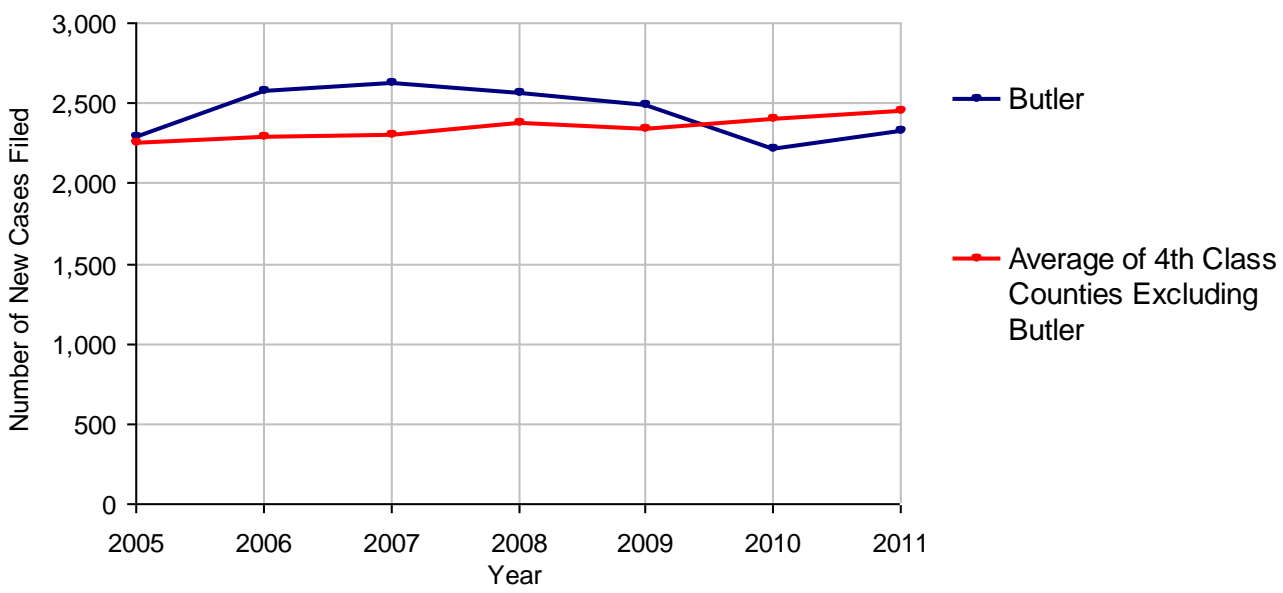
Cases Pending 1/1/2011	834
New Cases Filed in 2011	2,338
Reopened Cases	156
Cases Available for Disposition	3,328
Disposed by:	
Withdrawn/Dismissed	166 7.3%
ARD	549 24.3%
Guilty Plea	1,409 62.3%
Non-Jury Trial	16 0.7%
Jury Trial	9 0.4%
Inactive	64 2.8%
Other	50 2.2%
Total Cases Disposed	2,263 100.0%
Cases Pending 12/31/2011	1,065
Cases Awaiting Sentencing	140



Age of Pending Cases as of 12/31/2011		
0-60 Days	438	41.1%
61-120 Days	278	26.1%
121-180 Days	149	14.0%
181-240 Days	85	8.0%
241-300 Days	50	4.7%
301-360 Days	25	2.3%
Over 360 Days	40	3.8%
Total	1,065	100.0%

Data provided by CPCMS

Criminal New Cases Filed, 2005-2011

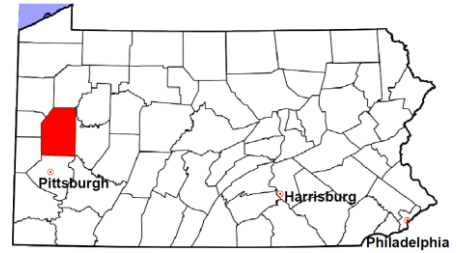


Butler County

2011 Population Estimate: 184,848

Class of County: 4th

No. of Common Pleas Court Judgeships: 6



2011 Criminal - New Cases by Case Type

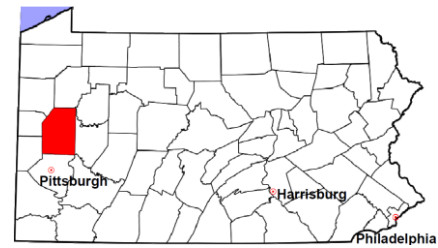


Case Type	Felony	Misdemeanor	Summary /Ungraded	Total
Person	112	203	0	315
Property	318	326	0	644
Drug	146	206	0	352
Weapon	11	10	0	21
Public Order	71	107	0	178
Motor Vehicle - DWI/DUI	0	819	0	819
Motor Vehicle - Other	2	7	0	9
Other	0	0	0	0
Total	660	1,678	0	2,338
	28.2%	71.8%		100.0%

Data provided by CPCMS

Butler County

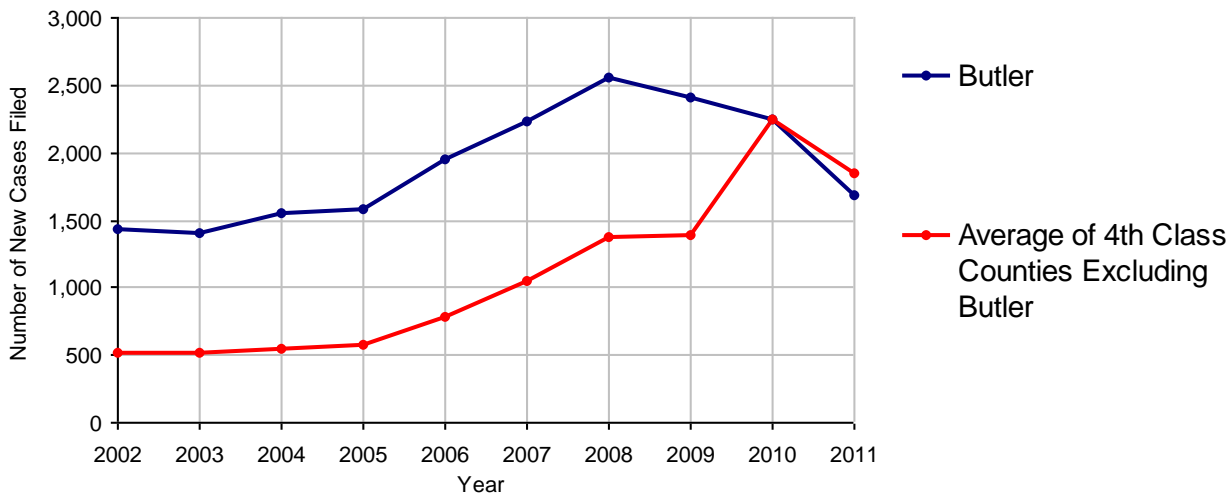
2011 Population Estimate: 184,848
 Class of County: 4th
 No. of Common Pleas Court Judgeships: 6



2011 Civil	Civil Action	Other	Total
Cases Pending 1/1/2011	1,023	1,328	2,351
Docketed Cases	1,136	546	1,682
Arbitration Appeals	3	0	3
Transferred In	3	1	4
Returned to Active	0	0	0
Cases Available for Processing	2,165	1,875	4,040
Disposed By:			
Default Judgments	428	214	642
Cases Decided by Arbitration Board	5	8	13
Dispositive Motions	4	0	4
Settlements	560	225	785
Moved to Inactive Status	17	5	22
Transferred/Withdrawn	3	1	4
Pa.R.J.A. 1901 Administrative Purge	2	46	48
Other	14	13	27
Jury Trial	25	2	27
Non-Jury Trial	2	4	6
Total Cases Disposed	1,060	518	1,578
Cases Pending 12/31/2011	1,105	1,357	2,462

Age of Pending Cases as of 12/31/2011 (Civil Action Only)		
0-6 months	442	40.0%
7-12 months	253	22.9%
13-18 months	278	25.2%
19-24 months	49	4.4%
25-30 months	75	6.8%
31-36 months	0	
37-42 months	0	
43-48 months	1	0.1%
49-54 months	2	0.2%
55-60 months	0	
61-66 months	1	0.1%
67-72 months	0	
Over 72 months	4	0.4%
Total	1,105	100.0%

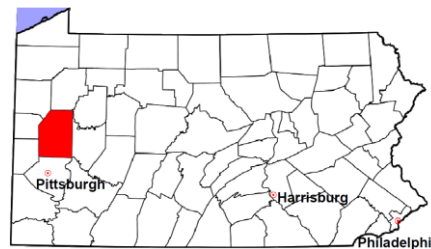
Docketed Cases, 2002-2011



Note: Prior to June 2010, docketed cases under the "Other" category were not reported. The reporting of these cases starting from June 2010 may contribute to an increase in docketed cases from 2009 to 2010.

Butler County

2011 Population Estimate: 184,848
 Class of County: 4th
 No. of Common Pleas Court Judgeships: 6



2011 Civil - Docketed Cases Listed by Case Type

TORT (does not include mass tort)

Intentional	7
Malicious Prosecution	0
Motor Vehicle	132
Nuisance	0
Premise Liability	28
Product Liability	10
Slander/Libel/Defamation	2
Other	30

MASS TORT

Asbestos	0
Tobacco	0
Toxic Tort - DES	0
Toxic Tort - Implant	0
Toxic Waste	0
Other	1

PROFESSIONAL LIABILITY

Dental	2
Legal	1
Medical Malpractice	16
Other	1

CONTRACT

(does not include judgments)

Buyer Plaintiff	13
Debt Collection:	
Credit Card	593
Debt Collection: Other	154
Employment Dispute:	
Discrimination	2
Employment Dispute: Other	4
Other	112

REAL PROPERTY

Ejectment*	39
Eminent Domain/ Condemnation*	26
Ground Rent	0
Landlord/Tenant Dispute	28
Mortgage Forclosures:	
Residential*	256
Commercial*	16
Partition of Real Property*	3
Quiet Title*	22
Other*	28

CIVIL APPEALS

Administrative Agencies

Board of Assessment*	3
Board of Elections*	0
Dept. of Transportation*	51
Zoning Board*	5
Statutory Appeal - Other*	3
Other*	15

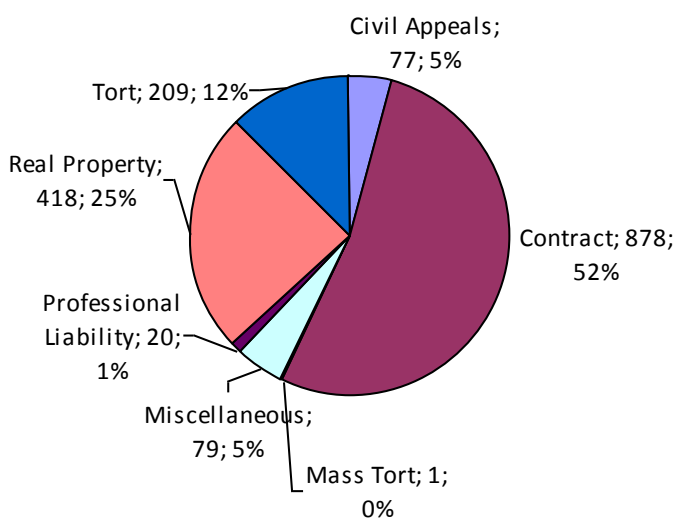
MISCELLANEOUS

Common Law/ Statutory Arbitration*	1
Declaratory Judgment*	9
Mandamus*	0
Non-Domestic Relations Restraining Order*	0
Quo Warranto*	0
Replevin*	16
Other*	53

TOTAL DOCKETED CASES:

1,682

* Civil Other



Of the Docketed Cases:

Pro Se Filings:	40	2.4%
Class Action Suits:	3	0.2%
MDJ Appeals:	140	8.3%

Butler County

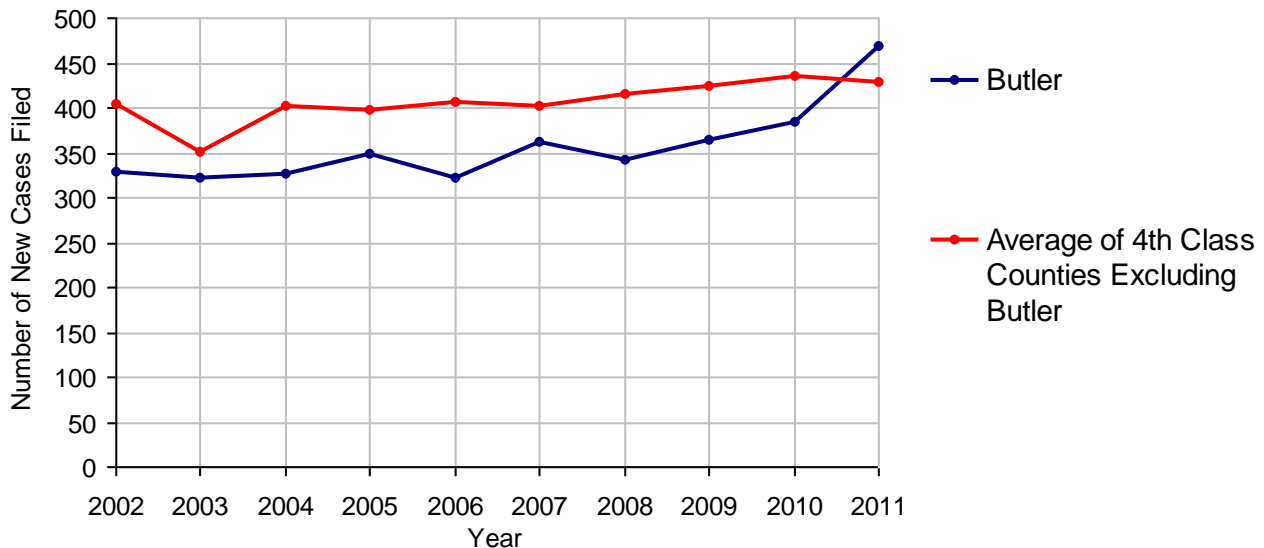
2011 Population Estimate: 184,848
 Class of County: 4th
 No. of Common Pleas Court Judgeships: 6



2011 Protection From Abuse

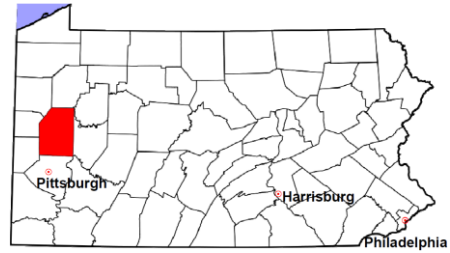
	No. of Petitions
Cases Pending 1/1/2011	47
New Cases Filed in 2011	469
<i>Of these, Petitions Requesting Temporary Orders: 469 (100.0%)</i>	
<i>Temporary Orders DENIED: 42 (9.0%), Temporary Orders GRANTED: 427 (91.0%)</i>	
Cases Available for Processing	516
Processed By:	
Temporary Order DENIED After Ex Parte Hearing and No Evidentiary Hearing Scheduled	38 8.7%
Temporary Order DISMISSED After Evidentiary Hearing and No Final Order Entered	114 26.1%
Final Order DENIED After Evidentiary Hearing Before a Judge	12 2.7%
Final Order GRANTED After Evidentiary Hearing Before a Judge	41 9.4%
Plaintiff Did Not Appear For Evidentiary Hearing	37 8.5%
Final Order by STIPULATION OR AGREEMENT Between the Parties	105 24.0%
Petition WITHDRAWN by Plaintiff	86 19.7%
TRANSFERRED to Another Jurisdiction	0
DECEASED Party	0
Other	4 0.9%
Cases Processed	437 100.0%
Cases Pending 12/31/2011	79

PFA New Cases Filed, 2002-2011

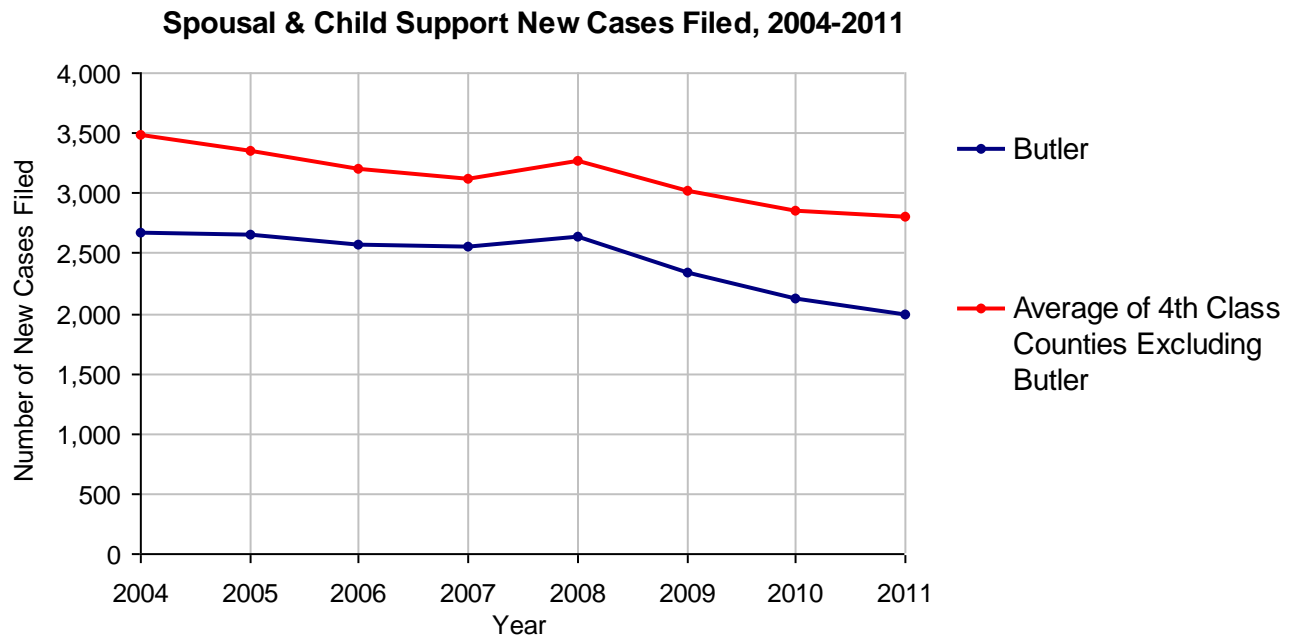


Butler County

2011 Population Estimate: 184,848
 Class of County: 4th
 No. of Common Pleas Court Judgeships: 6



2011 Spousal & Child Support	No. of Petitions	
Cases Pending 1/1/2011	433	
New Cases Filed in 2011	1,995	
Dockets Transferred In (+)	15	
Dockets Transferred Out (-)	26	
Cases Available for Processing	2,417	
Processed By:		
Judge	217	11.0%
Intake Officer	1,749	88.9%
Hearing Officer	0	
Other	1	0.1%
Cases Processed	1,967	100.0%
Cases Pending 12/31/2011	450	

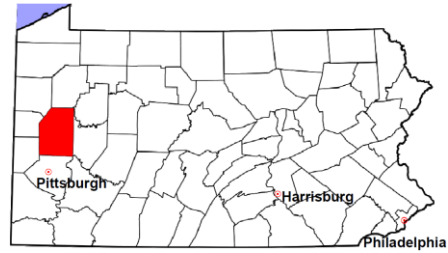


Butler County

2011 Population Estimate: 184,848

Class of County: 4th

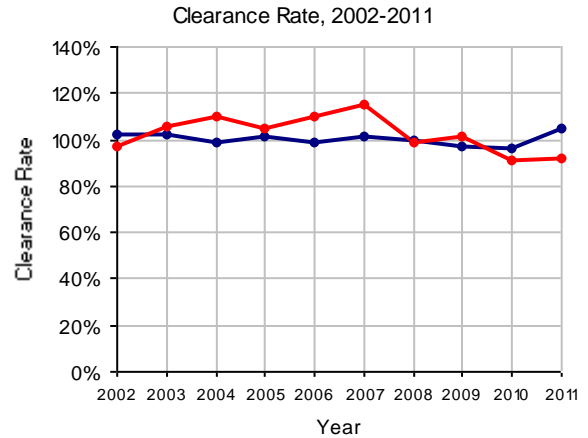
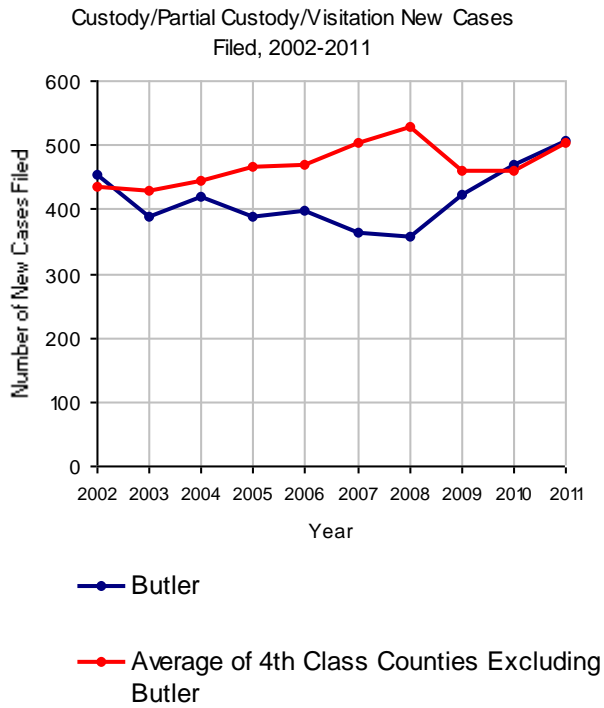
No. of Common Pleas Court Judgeships: 6



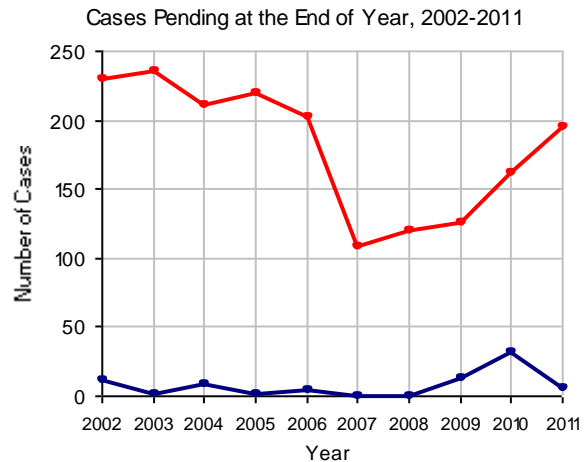
2011 Custody/Partial Custody/Visitation

No. of
Petitions

Cases Pending 1/1/2011	32
New Cases Filed in 2011	506
Cases Available for Processing	538
Processed By:	
Judge	26 4.9%
Non-Judicial Officer	445 83.6%
Other	61 11.5%
Cases Processed	532 100.0%
Cases Pending 12/31/2011	6

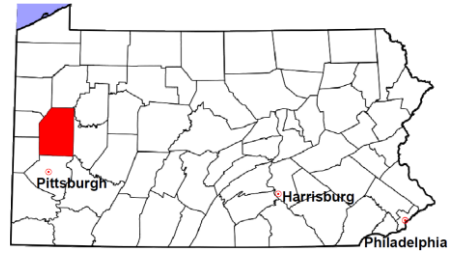


Note: Clearance Rate = Cases Processed / New Cases Filed



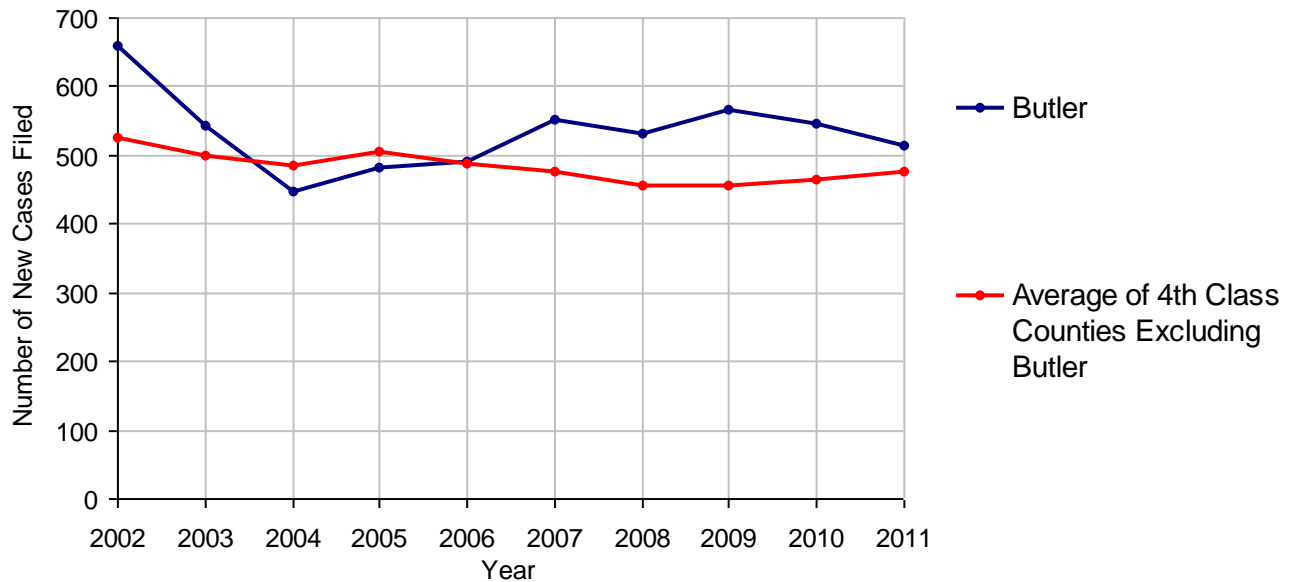
Butler County

2011 Population Estimate: 184,848
 Class of County: 4th
 No. of Common Pleas Court Judgeships: 6



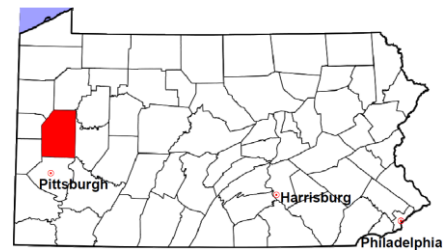
2011 Divorce	No. of Petitions
Cases Pending 1/1/2011	1,925
New Cases Filed in 2011	514
Cases Available for Processing	2,439
Processed By:	
Contested Before a Judge	7 1.4%
Contested Before a Master	0
Uncontested	442 88.2%
Other	52 10.4%
Cases Processed	501 100.0%
Cases Pending 12/31/2011	1,938

Divorce New Cases Filed, 2002-2011



Butler County

2011 Population Estimate: 184,848
 Class of County: 4th
 No. of Common Pleas Court Judgeships: 6



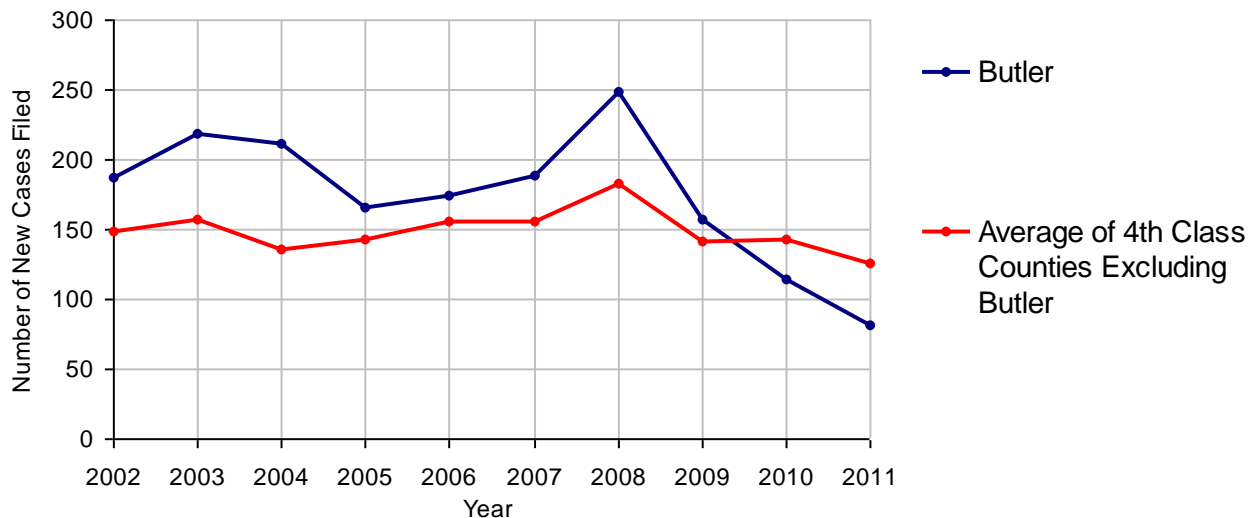
2011 Juvenile Dependency - Active Dependent Inventory



	Abuse/ Neglect	Status Offenses	Total
Cases Pending 1/1/2011	6	7	13
New Petitions Filed in 2011	79	2	81
Other	2	0	2
Total Petitions Available for Processing	87	9	96
Processed by:			
Adjudicated Dependent			
Judge	7	0	7
Master	48	5	53
Adjudicated NOT Dependent			
Judge	3	0	3
Master	2	0	2
Withdrawn/Dismissed/Inactive	4	0	4
Other	16	3	19
Total Petitions Processed	80	8	88
Cases Pending 12/31/2011	7	1	8

Data provided by CPCMS

Abuse/Neglect and Status Offenses New Cases Filed, 2002-2011



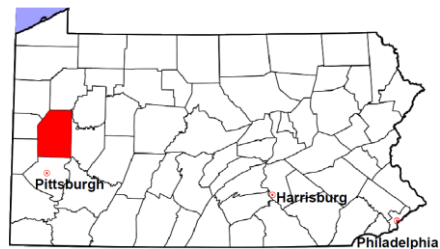
Note: Dependency data for 2002-2010 were collected manually. Dependency data for 2011 were provided by CPCMS.

Butler County

2011 Population Estimate: 184,848

Class of County: 4th

No. of Common Pleas Court Judgeships: 6



2011 Juvenile Dependency - Adjudicated Dependent Inventory



	Abuse/ Neglect	Status Offenses	Total	
Cases Pending 1/1/2011	118	10	128	
New Adjudicated Dependent Cases	55	5	60	
Other	9	0	9	
Total Adjudicated Dependent Cases	182	15	197	
<u>Court Supervision Terminated:</u>				
Family Reunification	15	3	18	23.1%
Adoption	22	0	22	28.2%
Placement with a Relative/Guardian	23	4	27	34.6%
Aged Out	3	0	3	3.8%
Other Permanency Outcomes*	3	1	4	5.1%
Other**	4	0	4	5.1%
Total Adjudicated Dependent Cases Terminated	70	8	78	100.0%
Cases Pending 12/31/2011	112	7	119	

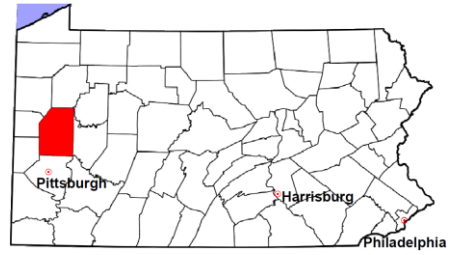
Data provided by CPCMS

* Other Permanency Outcomes include: adjudicated delinquent, death due to natural causes, emancipation, permanent living arrangement, and parent has come forward.

** Other includes cases where Court Supervision is terminated due to transfer out of jurisdiction, withdrawal and administrative closures.

Butler County

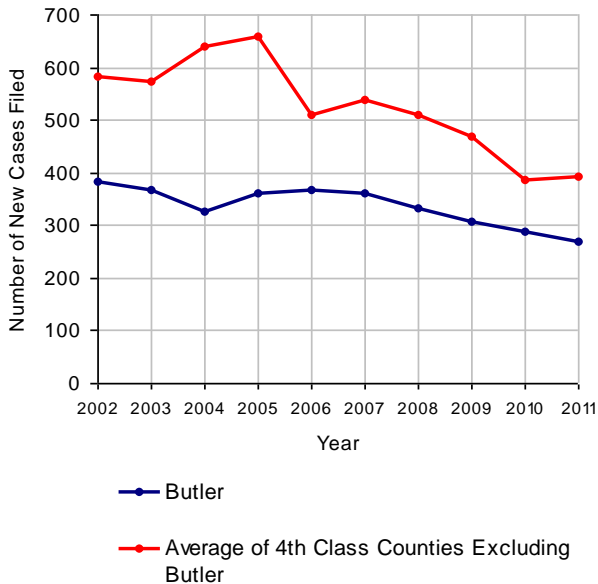
2011 Population Estimate: 184,848
 Class of County: 4th
 No. of Common Pleas Court Judgeships: 6



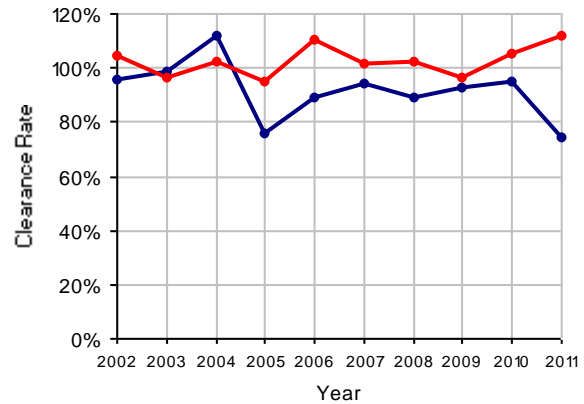
2011 Juvenile Delinquency

	No. of Cases	
Cases Pending 1/1/2011	327	
New Cases Filed in 2011	269	
Cases Available for Processing	596	
Processed By:		
Judge	71	35.3%
Non-Judicial Officer	130	64.7%
Other	0	
Cases Processed	201	100.0%
Cases Pending 12/31/2011	395	

Juvenile Delinquency New Cases Filed, 2002-2011

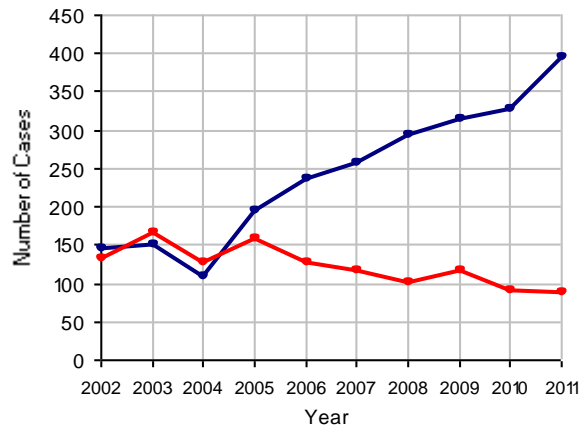


Clearance Rate, 2002-2011



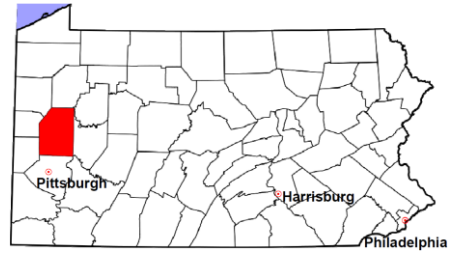
Note: Clearance Rate = Cases Processed / New Cases Filed

Cases Pending at the End of Year, 2002-2011



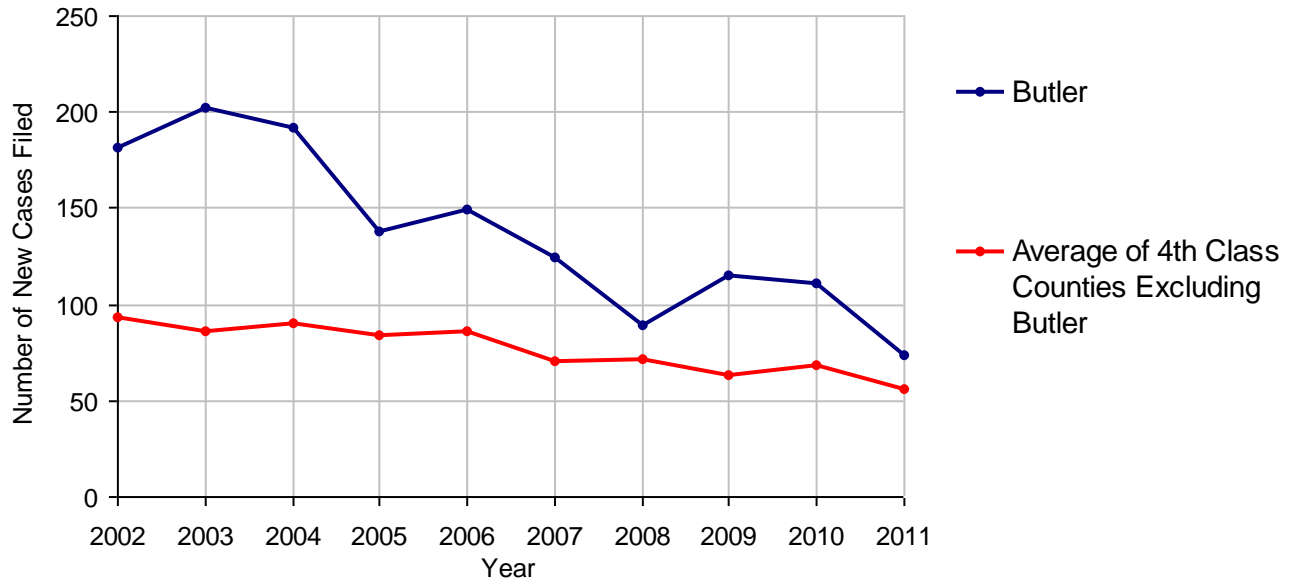
Butler County

2011 Population Estimate: 184,848
 Class of County: 4th
 No. of Common Pleas Court Judgeships: 6



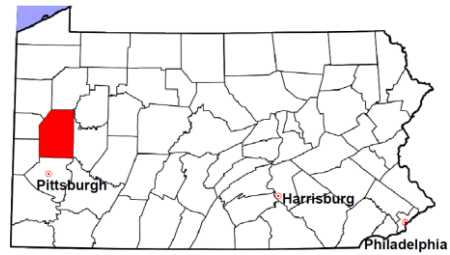
2011 Accounts	No. of Cases
Cases Pending 1/1/2011	100
New Cases Filed in 2011	74
Cases Available for Processing	174
Processed By:	
Contested before a Judge	2 1.3%
Contested before a Non-judicial Officer	0
Uncontested	131 86.8%
Other	18 11.9%
Cases Processed	151 100.0%
Cases Pending 12/31/2011	23

Accounts New Cases Filed, 2002-2011



Butler County

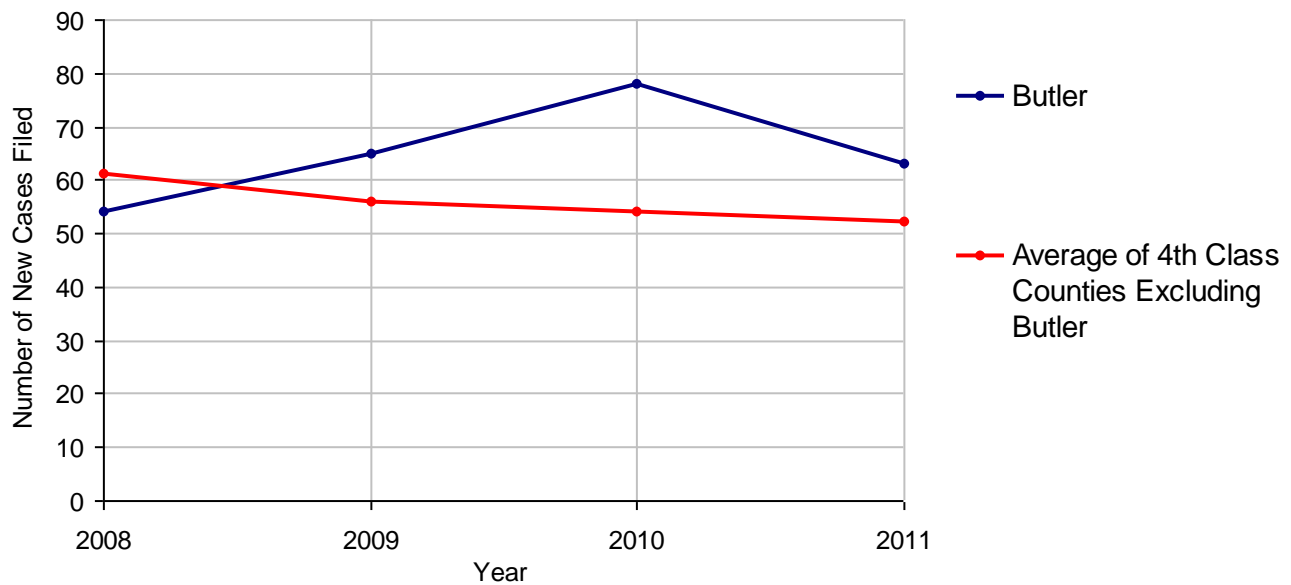
2011 Population Estimate: 184,848
 Class of County: 4th
 No. of Common Pleas Court Judgeships: 6



2011 Adoptions

		No. of Cases	
Cases Pending 1/1/2011		27	
New Cases Filed in 2011		63	
Cases Available for Processing		90	
Processed By:			
Contested before a Judge	Granted	0	
	Denied	0	
Uncontested	Granted	45	69.2%
	Denied	0	
Other		20	30.8%
Cases Processed		65	100.0%
Cases Pending 12/31/2011		25	

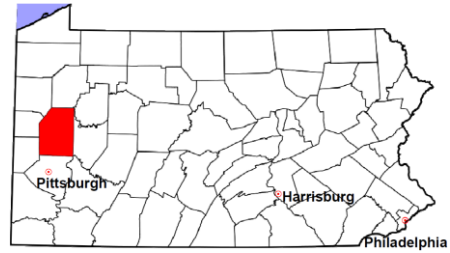
Adoptions New Cases Filed, 2008-2011



Note: Prior to 2008, each petition was counted as one new case, regardless of the number of children listed on the petition. Starting in 2008, each child listed on a petition is counted as a separate case. Therefore, statistics for the years since 2008 should not be compared to those for the years prior to 2008.

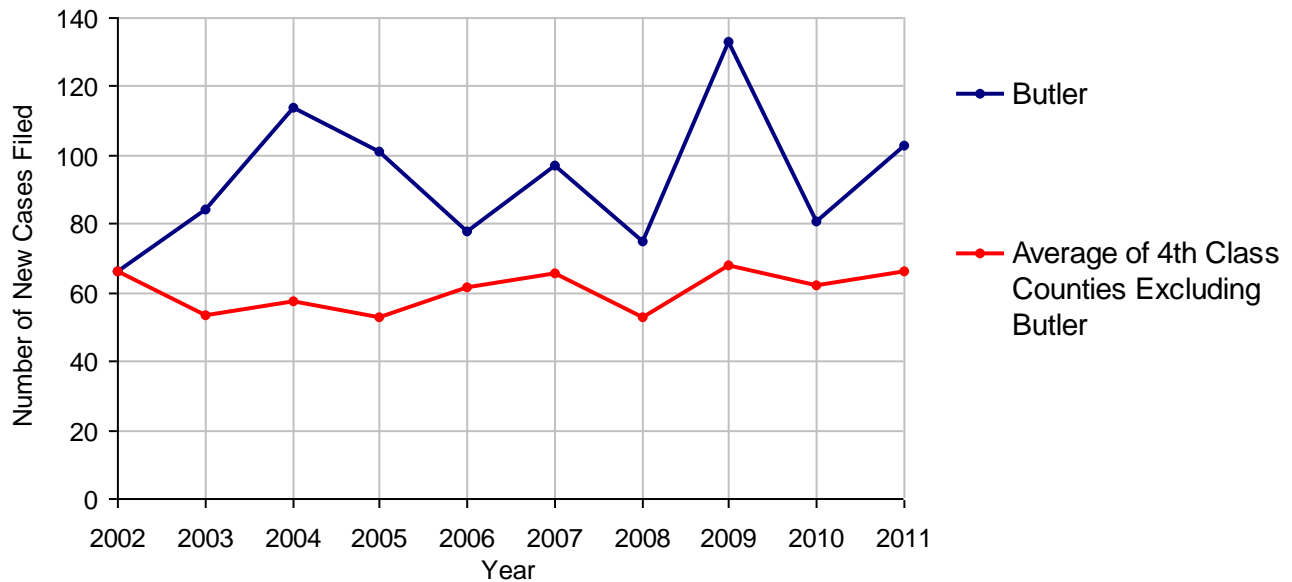
Butler County

2011 Population Estimate: 184,848
 Class of County: 4th
 No. of Common Pleas Court Judgeships: 6



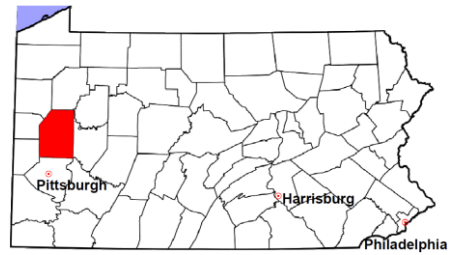
2011 Relinquishments/Terminations		No. of Cases	
Cases Pending 1/1/2011		36	
New Cases Filed in 2011		103	
Cases Available for Processing		139	
Processed By:			
Contested before a Judge		0	
Uncontested		70	82.4%
Other		15	17.6%
Cases Processed		85	100.0%
Cases Pending 12/31/2011		54	

Relinquishments/Terminations New Cases Filed, 2002-2011



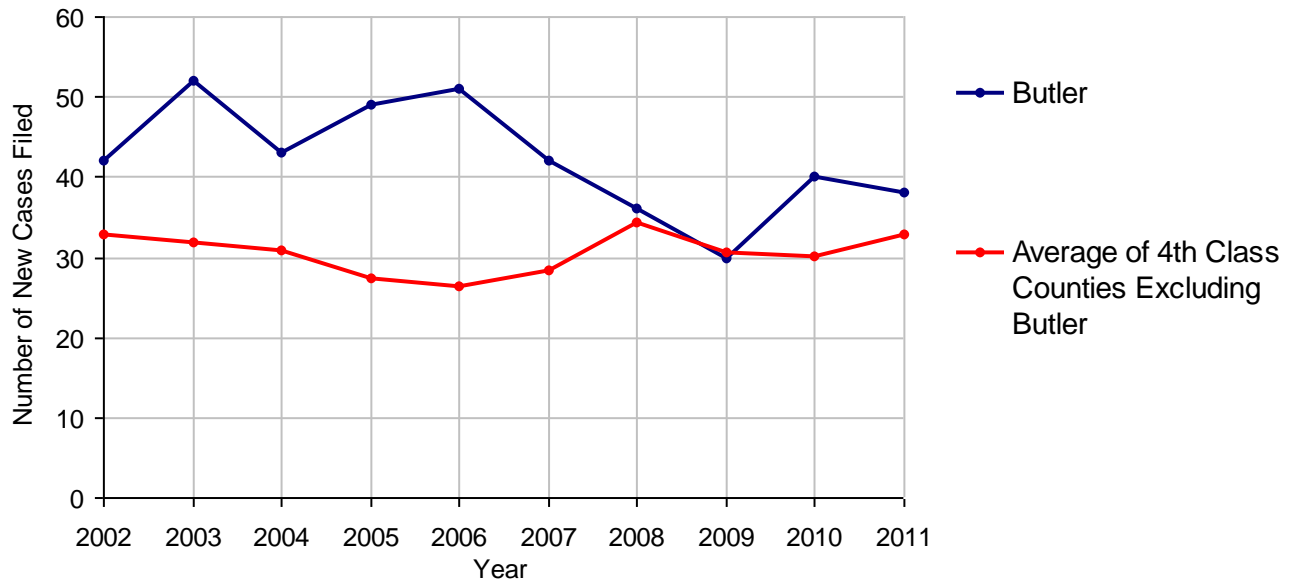
Butler County

2011 Population Estimate: 184,848
 Class of County: 4th
 No. of Common Pleas Court Judgeships: 6



2011 Appointment of Guardians	No. of Cases
Cases Pending 1/1/2011	14
New Cases Filed in 2011	38
Cases Available for Processing	52
Processed By:	
Contested before a Judge	0
Uncontested	23 74.2%
Other	8 25.8%
Cases Processed	31 100.0%
Cases Pending 12/31/2011	21

Appointment of Guardians New Cases Filed, 2002-2011

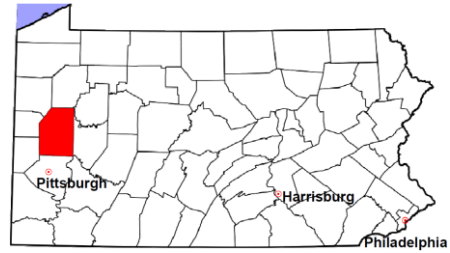


Butler County

2011 Population Estimate: 184,848

Class of County: 4th

No. of Common Pleas Court Judgeships: 6



2011 Jury Activity and Performance Measures

A. Juror Days	2,406
B. Number Sent to Voir Dire	1,230
Voir Dire Attendance Rate (B/A * 100)	51.1%
C. Number of Jurors Selected	382
Juror Selection Rate (C/B * 100)	31.1%

Note: In mid-2011, AOPC began utilizing the National Center for State Courts' Jury Managers' Toolbox for collecting jury data. This has resulted in limited jury performance measures being reported for 2011. Additional data will be available in 2012.