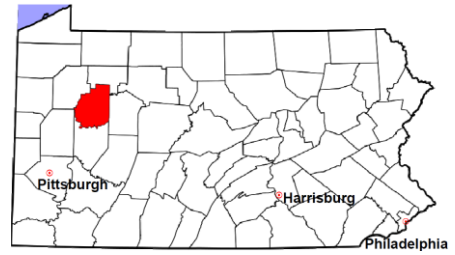


# Clarion County

2011 Population Estimate: 40,013

Class of County: 6th

No. of Common Pleas Court Judgeships: 1



2011 Criminal	No. of Cases
---------------	--------------

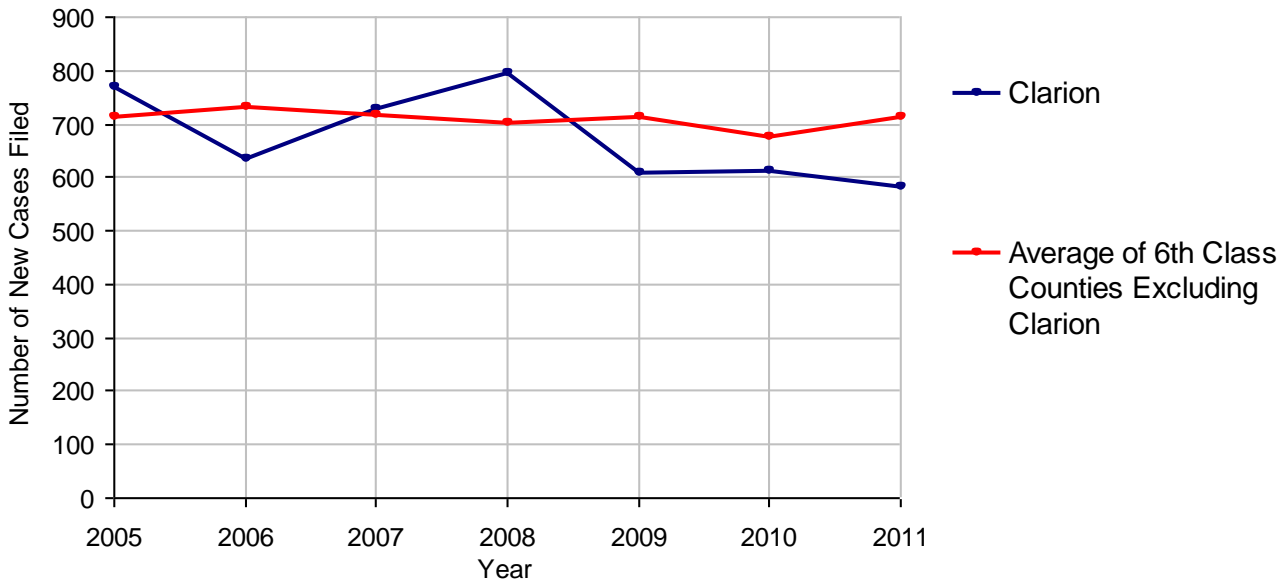
Cases Pending 1/1/2011	203
New Cases Filed in 2011	584
Reopened Cases	10
<b>Cases Available for Disposition</b>	<b>797</b>
<b>Disposed by:</b>	
Withdrawn/Dismissed	68 12.2%
ARD	198 35.6%
Guilty Plea	256 46.0%
Non-Jury Trial	3 0.5%
Jury Trial	7 1.3%
Inactive	10 1.8%
Other	14 2.5%
<b>Total Cases Disposed</b>	<b>556 100.0%</b>
<b>Cases Pending 12/31/2011</b>	<b>241</b>
Cases Awaiting Sentencing	27



Age of Pending Cases as of 12/31/2011		
0-60 Days	99	41.1%
61-120 Days	70	29.0%
121-180 Days	37	15.4%
181-240 Days	24	10.0%
241-300 Days	3	1.2%
301-360 Days	2	0.8%
Over 360 Days	6	2.5%
<b>Total</b>	<b>241</b>	<b>100.0%</b>

Data provided by CPCMS

**Criminal New Cases Filed, 2005-2011**

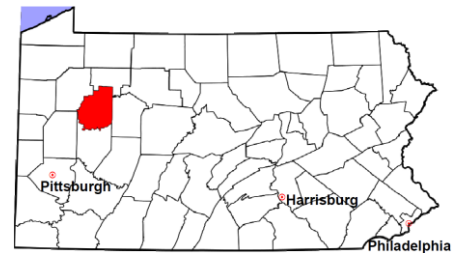


# Clarion County

2011 Population Estimate: 40,013

Class of County: 6th

No. of Common Pleas Court Judgeships: 1



## 2011 Criminal - New Cases by Case Type



Case Type	Felony	Misdemeanor	Summary /Ungraded	Total
Person	21	46	0	67
Property	64	75	0	139
Drug	43	47	0	90
Weapon	5	1	0	6
Public Order	55	41	0	96
Motor Vehicle - DWI/DUI	0	180	0	180
Motor Vehicle - Other	0	4	0	4
Other	2	0	0	2
<b>Total</b>	<b>190</b>	<b>394</b>	<b>0</b>	<b>584</b>
	<b>32.5%</b>	<b>67.5%</b>		<b>100.0%</b>

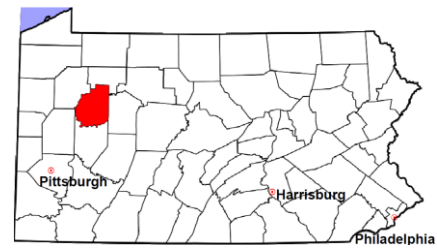
Data provided by CPCMS

# Clarion County

2011 Population Estimate: 40,013

Class of County: 6th

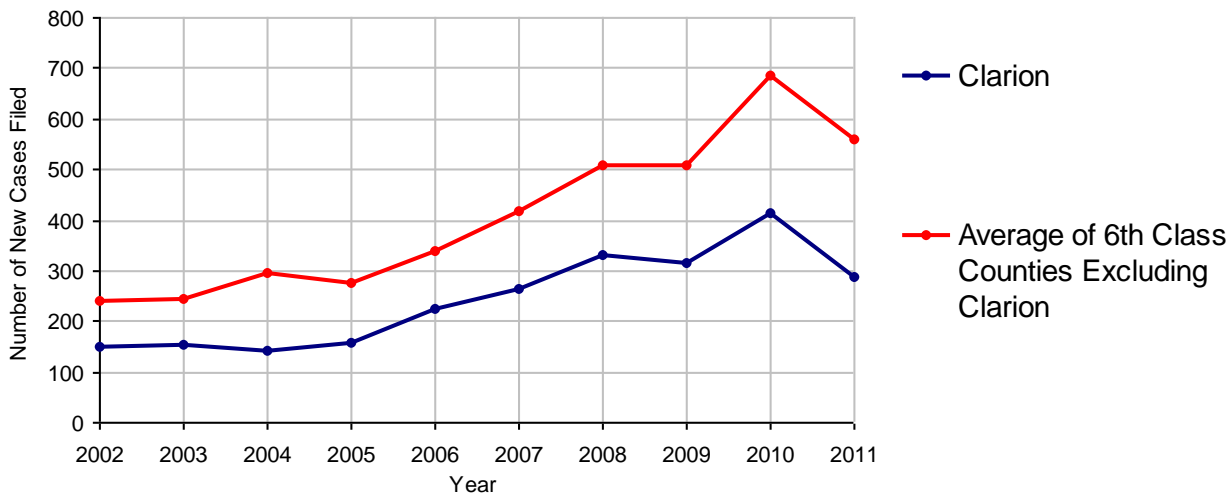
No. of Common Pleas Court Judgeships: 1



<b>2011 Civil</b>	<b>Civil Action</b>	<b>Other</b>	<b>Total</b>
Cases Pending 1/1/2011	202	692	894
Docketed Cases	159	128	287
Arbitration Appeals	1	4	5
Transferred In	0	0	0
Returned to Active	0	0	0
<b>Cases Available for Processing</b>	<b>362</b>	<b>824</b>	<b>1,186</b>
Disposed By:			
Default Judgments	74	23	97
Cases Decided by Arbitration Board	3	0	3
Dispositive Motions	11	29	40
Settlements	65	41	106
Moved to Inactive Status	1	3	4
Transferred/Withdrawn	6	5	11
Pa.R.J.A. 1901 Administrative Purge	0	1	1
Other	82	583	665
Jury Trial	1	0	1
Non-Jury Trial	5	0	5
<b>Total Cases Disposed</b>	<b>248</b>	<b>685</b>	<b>933</b>
<b>Cases Pending 12/31/2011</b>	<b>114</b>	<b>139</b>	<b>253</b>

Age of Pending Cases as of 12/31/2011 (Civil Action Only)		
0-6 months	47	41.2%
7-12 months	27	23.7%
13-18 months	34	29.8%
19-24 months	2	1.8%
25-30 months	0	
31-36 months	0	
37-42 months	1	0.9%
43-48 months	1	0.9%
49-54 months	0	
55-60 months	1	0.9%
61-66 months	0	
67-72 months	0	
Over 72 months	1	0.9%
<b>Total</b>	<b>114</b>	<b>100.0%</b>

**Docketed Cases, 2002-2011**



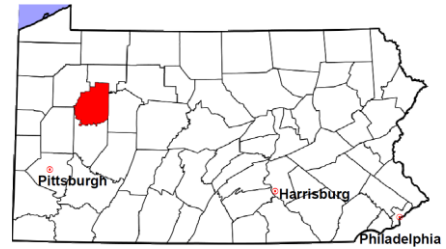
Note: Prior to June 2010, docketed cases under the "Other" category were not reported. The reporting of these cases starting from June 2010 may contribute to an increase in docketed cases from 2009 to 2010.

# Clarion County

2011 Population Estimate: 40,013

Class of County: 6th

No. of Common Pleas Court Judgeships: 1



## 2011 Civil - Docketed Cases Listed by Case Type

### TORT (does not include mass tort)

Intentional	3
Malicious Prosecution	0
Motor Vehicle	9
Nuisance	0
Premise Liability	4
Product Liability	2
Slander/Libel/Defamation	2
Other	2

### MASS TORT

Asbestos	0
Tobacco	0
Toxic Tort - DES	0
Toxic Tort - Implant	0
Toxic Waste	0
Other	0

### PROFESSIONAL LIABILITY

Dental	0
Legal	1
Medical Malpractice	0
Other	1

### CONTRACT

(does not include judgments)

Buyer Plaintiff	4
Debt Collection:	
Credit Card	74
Other	35
Employment Dispute:	
Discrimination	0
Other	1
Other	19

### REAL PROPERTY

Ejectment*	12
Eminent Domain/ Condemnation*	5
Ground Rent	1
Landlord/Tenant Dispute	1
Mortgage Forclosures:	
Residential*	34
Commercial*	12
Partition of Real Property*	2
Quiet Title*	13
Other*	2

### CIVIL APPEALS

*Administrative Agencies*

Board of Assessment*	4
Board of Elections*	0
Dept. of Transportation*	12
Zoning Board*	2
Statutory Appeal - Other*	0
Other*	2

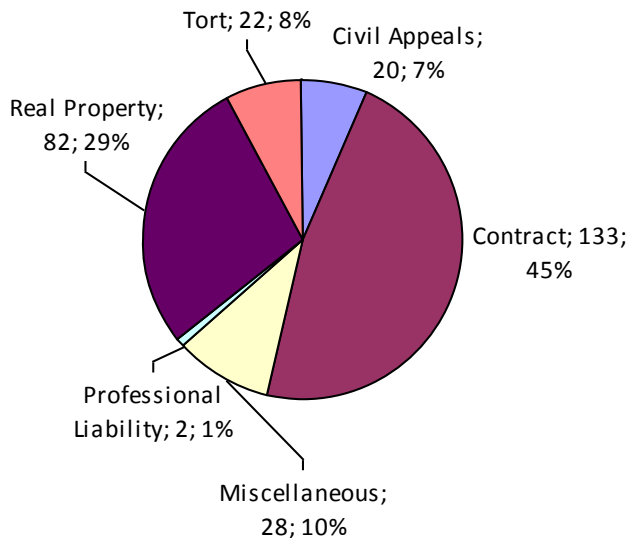
### MISCELLANEOUS

Common Law/ Statutory Arbitration*	0
Declaratory Judgment*	1
Mandamus*	0
Non-Domestic Relations Restraining Order*	0
Quo Warranto*	0
Replevin*	3
Other*	24

### **TOTAL DOCKETED CASES:**

**287**

\* Civil Other



### **Of the Docketed Cases:**

Pro Se Filings:	11	3.8%
Class Action Suits:	0	
MDJ Appeals:	16	5.6%

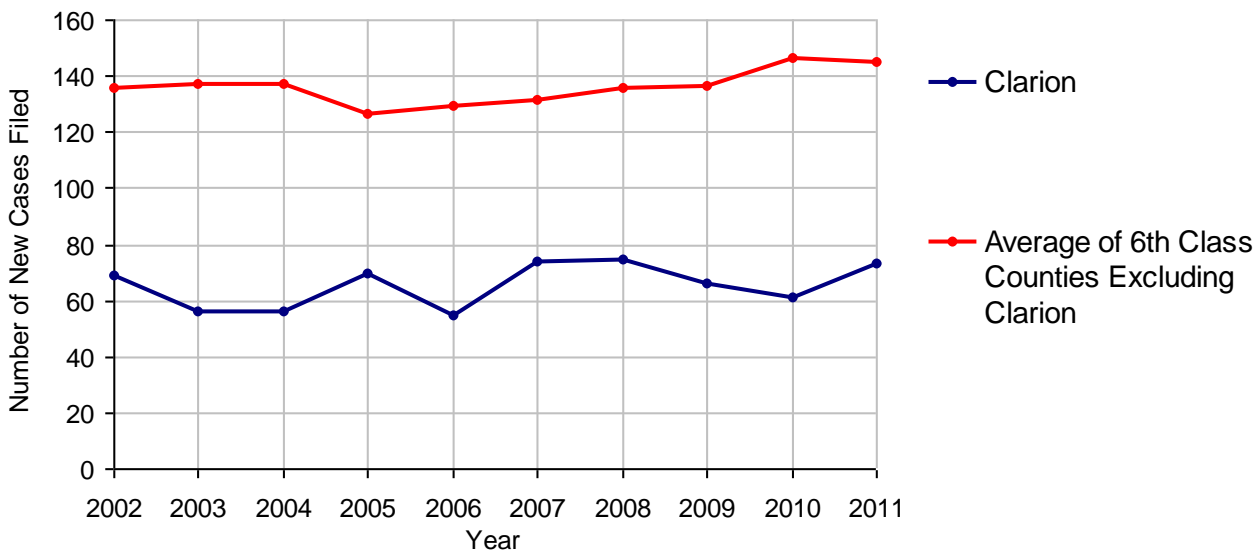
# Clarion County

2011 Population Estimate: 40,013  
 Class of County: 6th  
 No. of Common Pleas Court Judgeships: 1



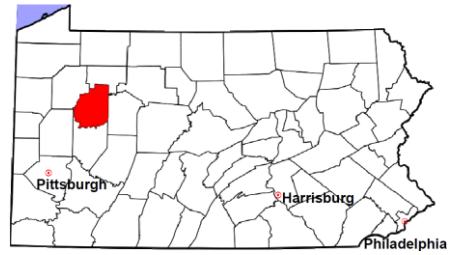
<b>2011 Protection From Abuse</b>	<b>No. of Petitions</b>
Cases Pending 1/1/2011	1
New Cases Filed in 2011	73
<i>Of these, Petitions Requesting Temporary Orders: 73 (100.0%)</i>	
<i>Temporary Orders DENIED: 0 (0.0%), Temporary Orders GRANTED: 73 (100.0%)</i>	
<b>Cases Available for Processing</b>	<b>74</b>
Processed By:	
Temporary Order DENIED After Ex Parte Hearing and No Evidentiary Hearing Scheduled	2 2.8%
Temporary Order DISMISSED After Evidentiary Hearing and No Final Order Entered	1 1.4%
Final Order DENIED After Evidentiary Hearing Before a Judge	5 6.9%
Final Order GRANTED After Evidentiary Hearing Before a Judge	14 19.4%
Plaintiff Did Not Appear For Evidentiary Hearing	3 4.2%
Final Order by STIPULATION OR AGREEMENT Between the Parties	30 41.7%
Petition WITHDRAWN by Plaintiff	13 18.1%
TRANSFERRED to Another Jurisdiction	0
DECEASED Party	0
Other	4 5.6%
<b>Cases Processed</b>	<b>72 100.0%</b>
<b>Cases Pending 12/31/2011</b>	<b>2</b>

**PFA New Cases Filed, 2002-2011**

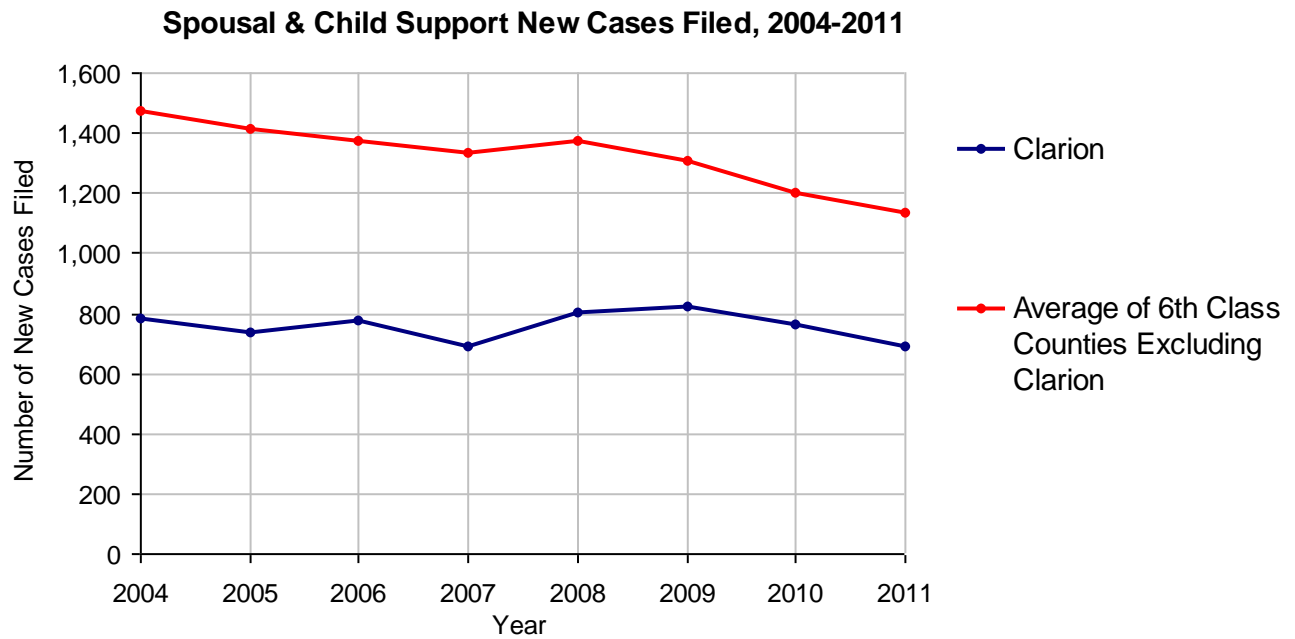


# Clarion County

2011 Population Estimate: 40,013  
 Class of County: 6th  
 No. of Common Pleas Court Judgeships: 1



<b>2011 Spousal &amp; Child Support</b>	<b>No. of Petitions</b>	
Cases Pending 1/1/2011	42	
New Cases Filed in 2011	688	
Dockets Transferred In (+)	14	
Dockets Transferred Out (-)	10	
<b>Cases Available for Processing</b>	<b>734</b>	
Processed By:		
Judge	0	
Intake Officer	673	97.0%
Hearing Officer	21	3.0%
Other	0	
<b>Cases Processed</b>	<b>694</b>	<b>100.0%</b>
<b>Cases Pending 12/31/2011</b>	<b>40</b>	

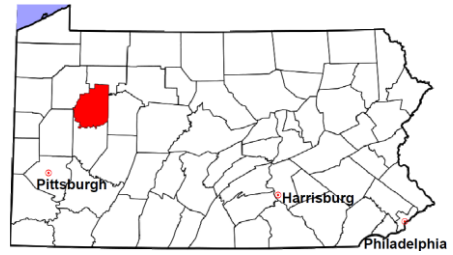


# Clarion County

2011 Population Estimate: 40,013

Class of County: 6th

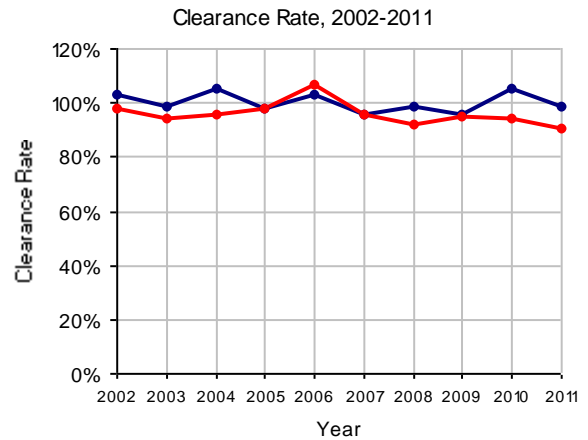
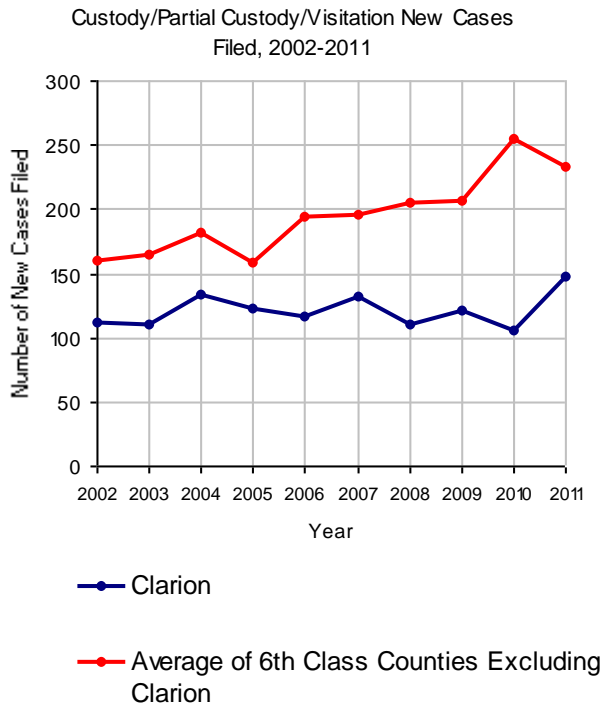
No. of Common Pleas Court Judgeships: 1



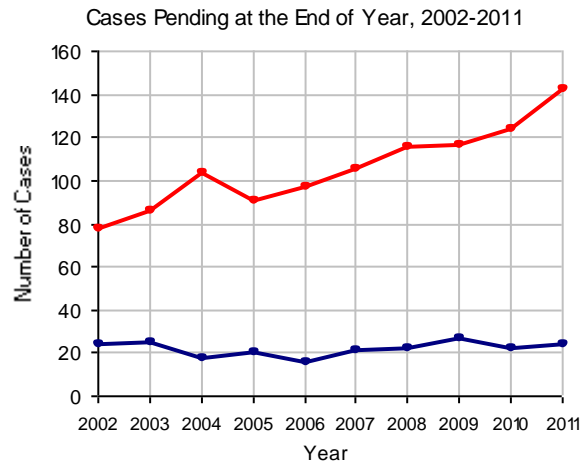
## 2011 Custody/Partial Custody/Visitation

No. of  
Petitions

Cases Pending 1/1/2011	22
New Cases Filed in 2011	147
<b>Cases Available for Processing</b>	<b>169</b>
Processed By:	
Judge	24 16.6%
Non-Judicial Officer	41 28.3%
Other	80 55.2%
<b>Cases Processed</b>	<b>145 100.0%</b>
<b>Cases Pending 12/31/2011</b>	<b>24</b>

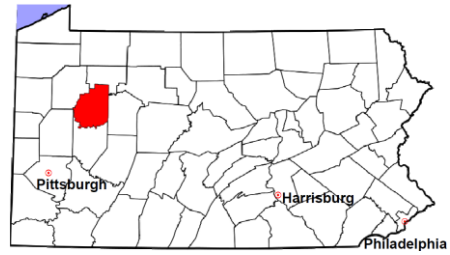


Note: Clearance Rate = Cases Processed / New Cases Filed



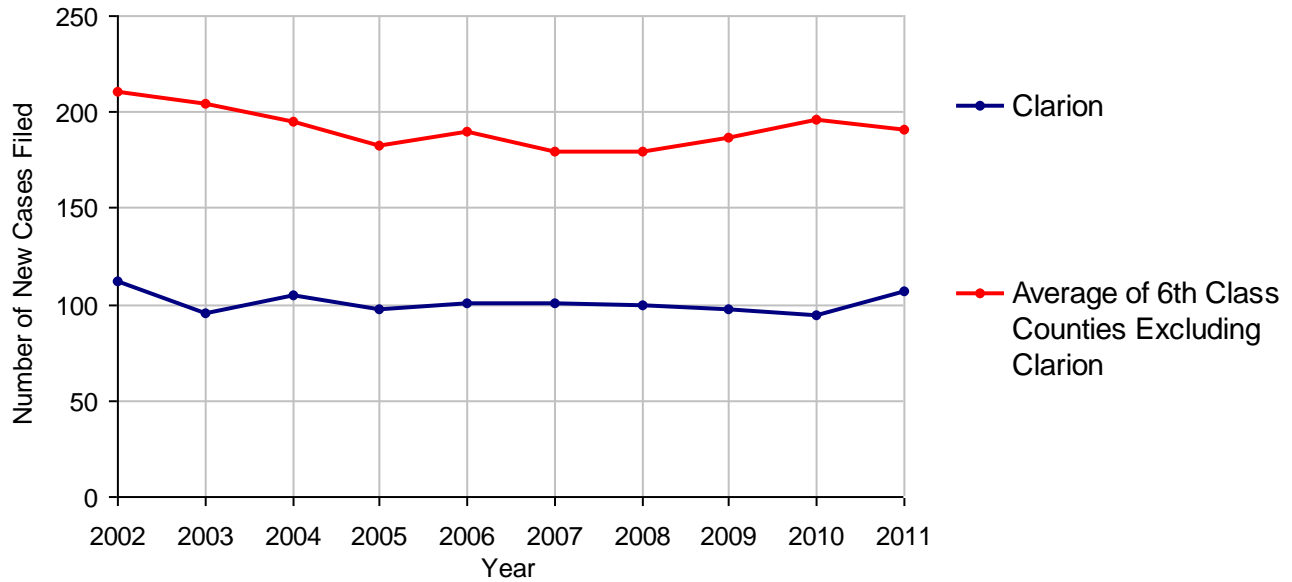
# Clarion County

2011 Population Estimate: 40,013  
 Class of County: 6th  
 No. of Common Pleas Court Judgeships: 1



<b>2011 Divorce</b>	<b>No. of Petitions</b>	
Cases Pending 1/1/2011	39	
New Cases Filed in 2011	107	
<b>Cases Available for Processing</b>	<b>146</b>	
Processed By:		
Contested Before a Judge	11	10.2%
Contested Before a Master	8	7.4%
Uncontested	83	76.9%
Other	6	5.6%
<b>Cases Processed</b>	<b>108</b>	<b>100.0%</b>
<b>Cases Pending 12/31/2011</b>	<b>38</b>	

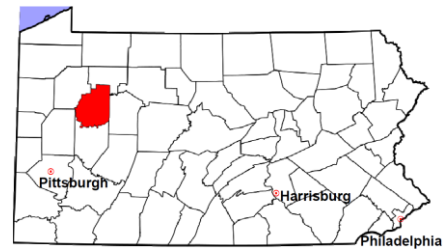
**Divorce New Cases Filed, 2002-2011**





# Clarion County

2011 Population Estimate: 40,013  
 Class of County: 6th  
 No. of Common Pleas Court Judgeships: 1



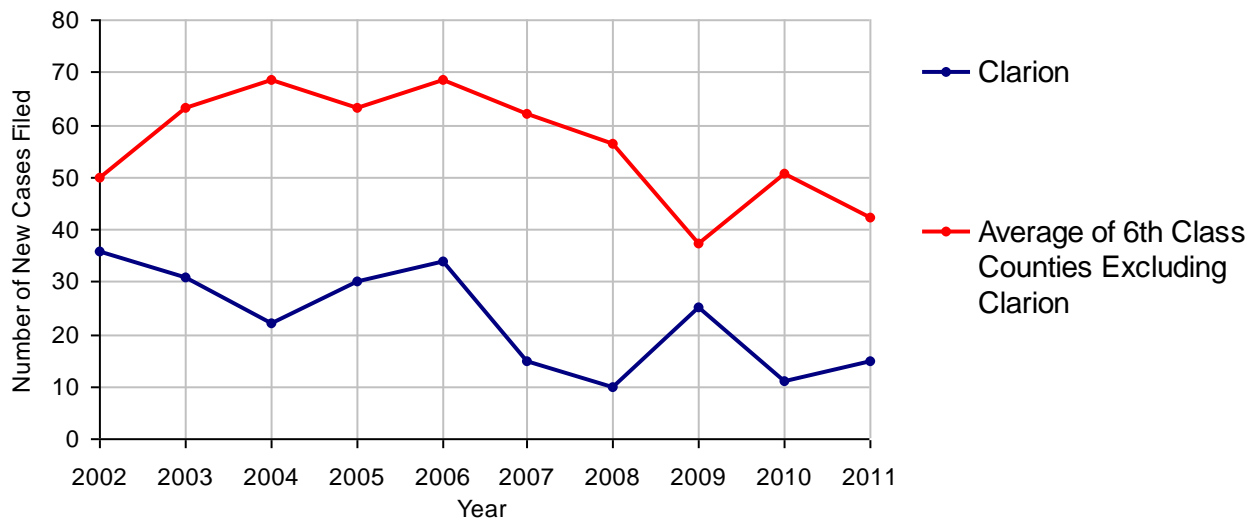
## 2011 Juvenile Dependency - Active Dependent Inventory



	Abuse/ Neglect	Status Offenses	Total
Cases Pending 1/1/2011	5	0	5
New Petitions Filed in 2011	13	2	15
Other	0	1	1
<b>Total Petitions Available for Processing</b>	<b>18</b>	<b>3</b>	<b>21</b>
Processed by:			
Adjudicated Dependent			
Judge	12	2	14
Master	0	0	0
Adjudicated NOT Dependent			
Judge	1	0	1
Master	0	0	0
Withdrawn/Dismissed/Inactive	0	0	0
Other	0	1	1
<b>Total Petitions Processed</b>	<b>13</b>	<b>3</b>	<b>16</b>
<b>Cases Pending 12/31/2011</b>	<b>5</b>	<b>0</b>	<b>5</b>

Data provided by CPCMS

Abuse/Neglect and Status Offenses New Cases Filed, 2002-2011



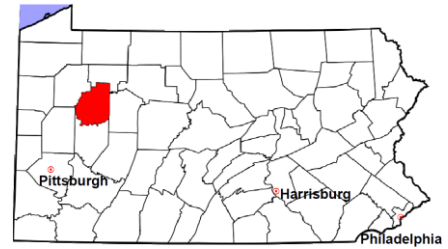
Note: Dependency data for 2002-2010 were collected manually. Dependency data for 2011 were provided by CPCMS.

# Clarion County

2011 Population Estimate: 40,013

Class of County: 6th

No. of Common Pleas Court Judgeships: 1



## 2011 Juvenile Dependency - Adjudicated Dependent Inventory

	Abuse/ Neglect	Status Offenses	Total	
Cases Pending 1/1/2011	30	2	32	
New Adjudicated Dependent Cases	12	2	14	
Other	1	1	2	
<b>Total Adjudicated Dependent Cases</b>	<b>43</b>	<b>5</b>	<b>48</b>	
<b><u>Court Supervision Terminated:</u></b>				
Family Reunification	1	0	1	7.1%
Adoption	0	0	0	
Placement with a Relative/Guardian	5	1	6	42.9%
Aged Out	1	0	1	7.1%
Other Permanency Outcomes*	1	1	2	14.3%
Other**	3	1	4	28.6%
<b>Total Adjudicated Dependent Cases Terminated</b>	<b>11</b>	<b>3</b>	<b>14</b>	<b>100.0%</b>
<b>Cases Pending 12/31/2011</b>	<b>32</b>	<b>2</b>	<b>34</b>	

Data provided by CPCMS

\* Other Permanency Outcomes include: adjudicated delinquent, death due to natural causes, emancipation, permanent living arrangement, and parent has come forward.

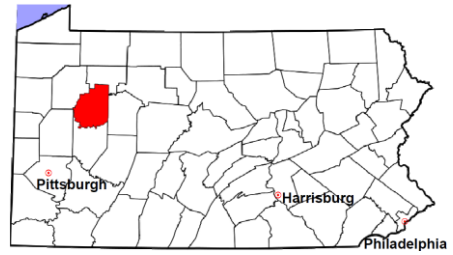
\*\* Other includes cases where Court Supervision is terminated due to transfer out of jurisdiction, withdrawal and administrative closures.

# Clarion County

2011 Population Estimate: 40,013

Class of County: 6th

No. of Common Pleas Court Judgeships: 1

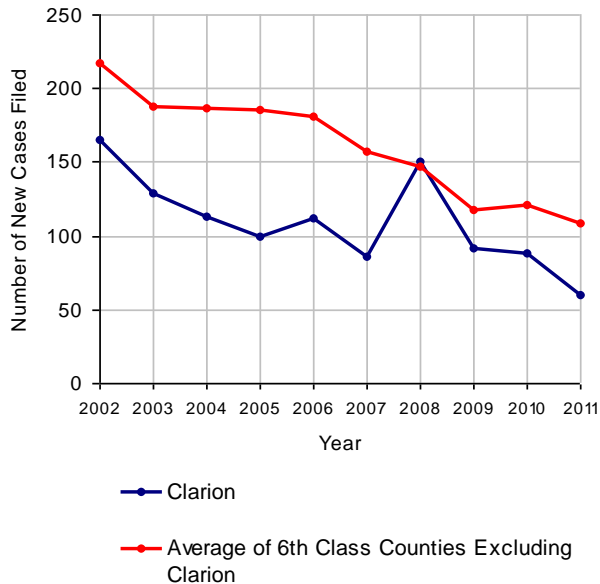


## 2011 Juvenile Delinquency

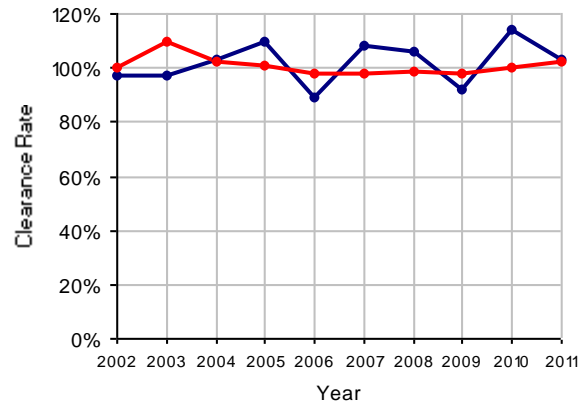
**No. of Cases**

Cases Pending 1/1/2011	11
New Cases Filed in 2011	60
<b>Cases Available for Processing</b>	<b>71</b>
Processed By:	
Judge	23 37.1%
<b>Non-Judicial Officer</b>	<b>20 32.3%</b>
Other	19 30.6%
<b>Cases Processed</b>	<b>62 100.0%</b>
<b>Cases Pending 12/31/2011</b>	<b>9</b>

Juvenile Delinquency New Cases Filed, 2002-2011

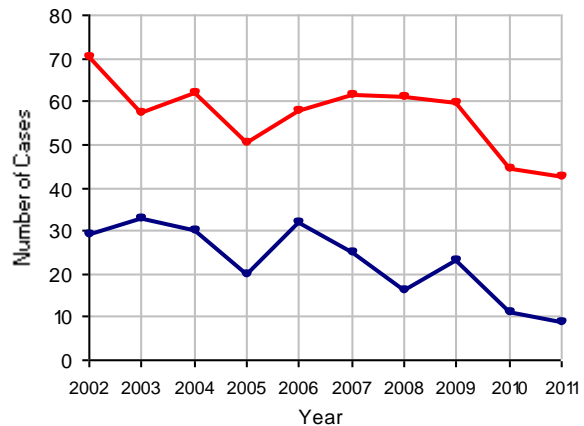


Clearance Rate, 2002-2011



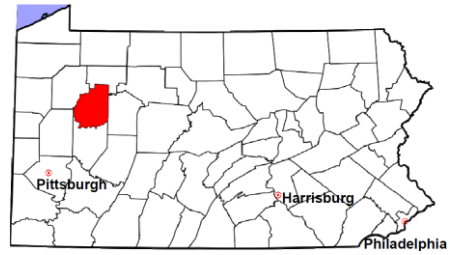
Note: Clearance Rate = Cases Processed / New Cases Filed

Cases Pending at the End of Year, 2002-2011



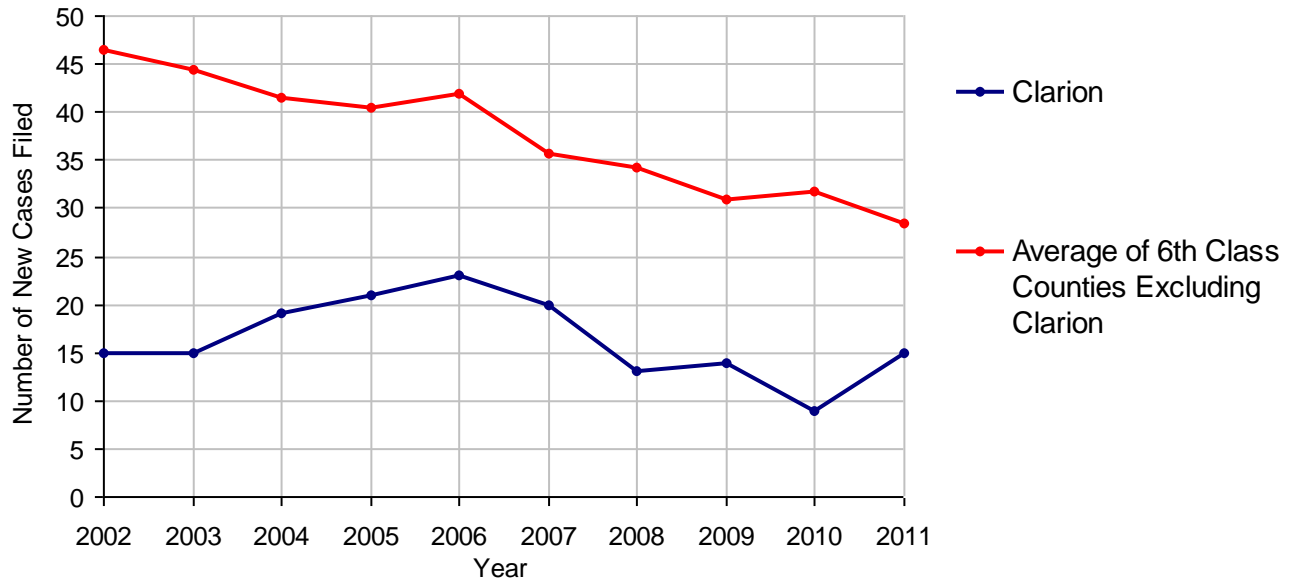
# Clarion County

2011 Population Estimate: 40,013  
 Class of County: 6th  
 No. of Common Pleas Court Judgeships: 1



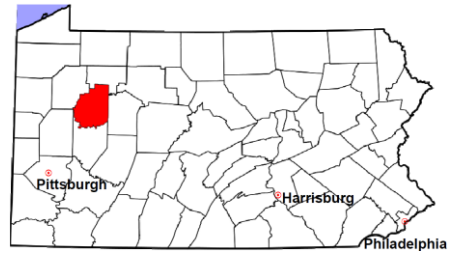
<b>2011 Accounts</b>	<b>No. of Cases</b>	
Cases Pending 1/1/2011	0	
New Cases Filed in 2011	15	
<b>Cases Available for Processing</b>	<b>15</b>	
Processed By:		
Contested before a Judge	0	
Contested before a Non-judicial Officer	0	
Uncontested	15	100.0%
Other	0	
<b>Cases Processed</b>	<b>15</b>	<b>100.0%</b>
<b>Cases Pending 12/31/2011</b>	<b>0</b>	

**Accounts New Cases Filed, 2002-2011**



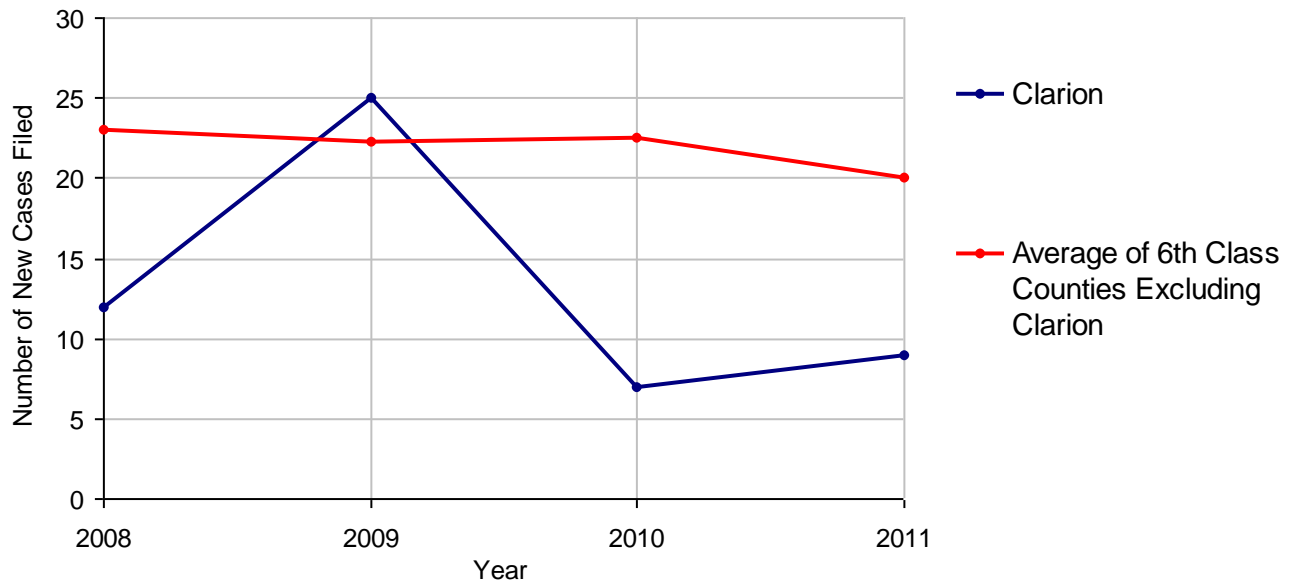
# Clarion County

2011 Population Estimate: 40,013  
 Class of County: 6th  
 No. of Common Pleas Court Judgeships: 1



2011 Adoptions		No. of Cases	
Cases Pending 1/1/2011		3	
New Cases Filed in 2011		9	
<b>Cases Available for Processing</b>		<b>12</b>	
Processed By:			
Contested before a Judge	Granted	0	
	Denied	0	
Uncontested	Granted	7	63.6%
	Denied	0	
Other		4	36.4%
<b>Cases Processed</b>		<b>11</b>	<b>100.0%</b>
<b>Cases Pending 12/31/2011</b>		<b>1</b>	

Adoptions New Cases Filed, 2008-2011



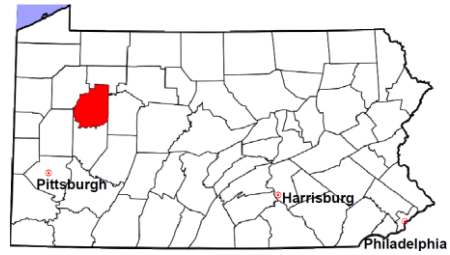
Note: Prior to 2008, each petition was counted as one new case, regardless of the number of children listed on the petition. Starting in 2008, each child listed on a petition is counted as a separate case. Therefore, statistics for the years since 2008 should not be compared to those for the years prior to 2008.

# Clarion County

2011 Population Estimate: 40,013

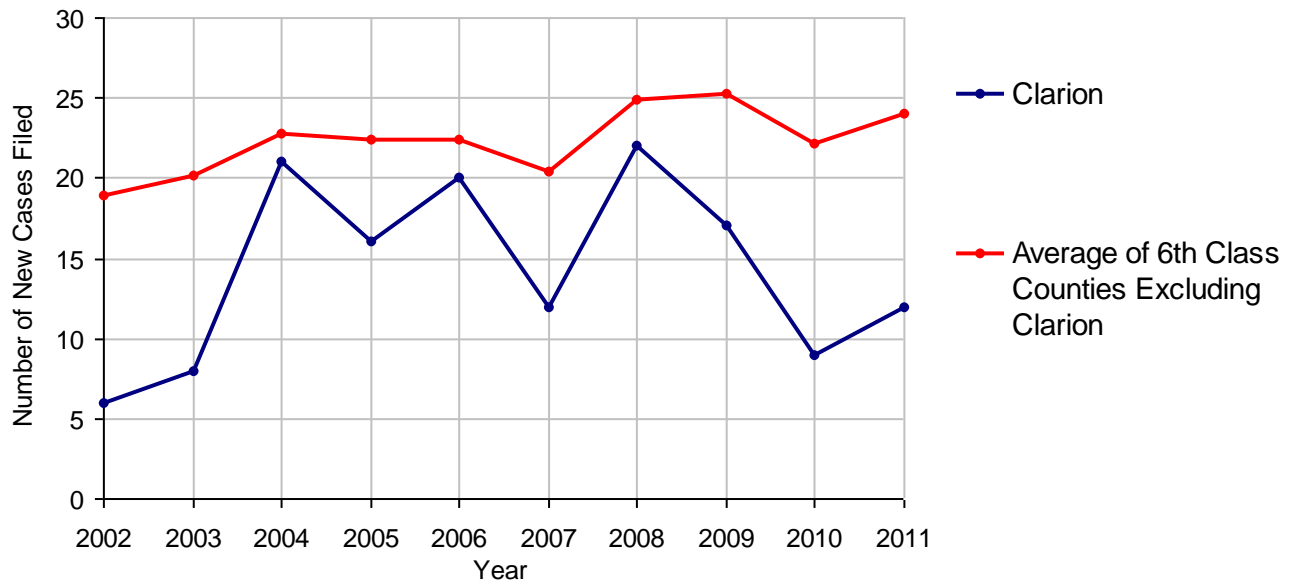
Class of County: 6th

No. of Common Pleas Court Judgeships: 1



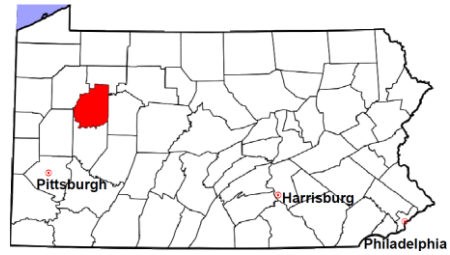
<b>2011 Relinquishments/Terminations</b>		<b>No. of Cases</b>
Cases Pending 1/1/2011		2
New Cases Filed in 2011		12
<b>Cases Available for Processing</b>		<b>14</b>
Processed By:		
Contested before a Judge		0
Uncontested	11	84.6%
Other	2	15.4%
<b>Cases Processed</b>	<b>13</b>	<b>100.0%</b>
<b>Cases Pending 12/31/2011</b>		<b>1</b>

**Relinquishments/Terminations New Cases Filed, 2002-2011**



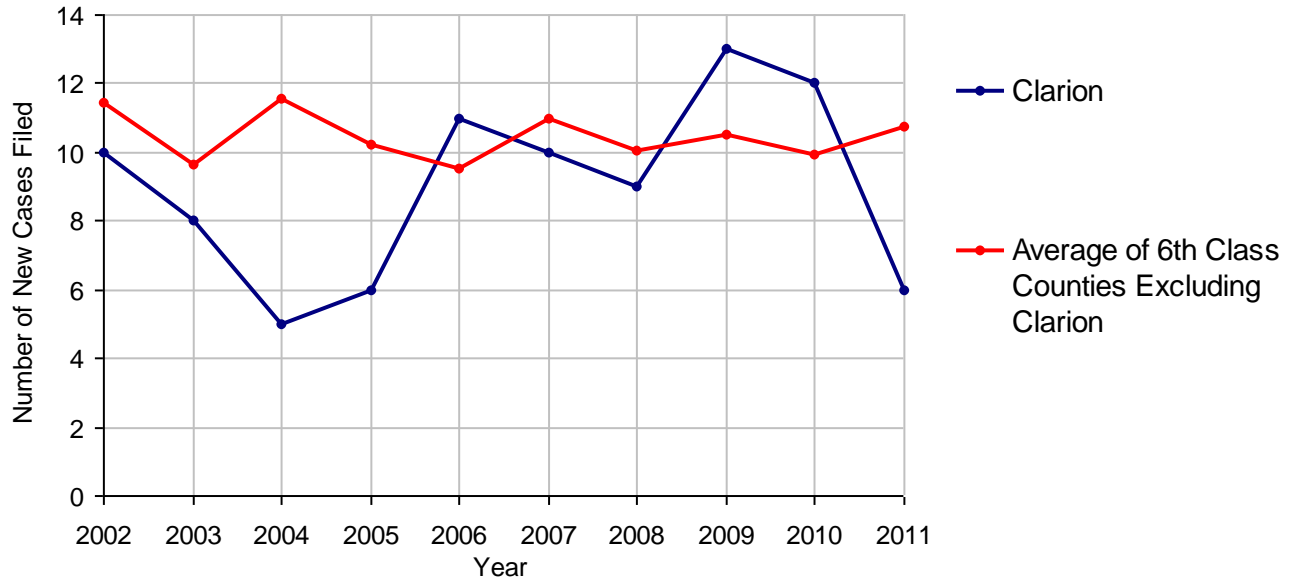
# Clarion County

2011 Population Estimate: 40,013  
 Class of County: 6th  
 No. of Common Pleas Court Judgeships: 1



<b>2011 Appointment of Guardians</b>		<b>No. of Cases</b>
Cases Pending 1/1/2011		3
New Cases Filed in 2011		6
<b>Cases Available for Processing</b>		<b>9</b>
Processed By:		
Contested before a Judge		0
Uncontested	4	80.0%
Other	1	20.0%
<b>Cases Processed</b>	<b>5</b>	<b>100.0%</b>
<b>Cases Pending 12/31/2011</b>		<b>4</b>

**Appointment of Guardians New Cases Filed, 2002-2011**

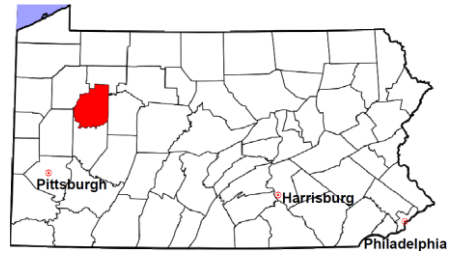


# Clarion County

2011 Population Estimate: 40,013

Class of County: 6th

No. of Common Pleas Court Judgeships: 1



---

## 2011 Jury Activity and Performance Measures

---

A. Juror Days	710
B. Number Sent to Voir Dire	529
Voir Dire Attendance Rate (B/A * 100)	74.5%
C. Number of Jurors Selected	172
Juror Selection Rate (C/B * 100)	32.5%

---

Note: In mid-2011, AOPC began utilizing the National Center for State Courts' Jury Managers' Toolbox for collecting jury data. This has resulted in limited jury performance measures being reported for 2011. Additional data will be available in 2012.