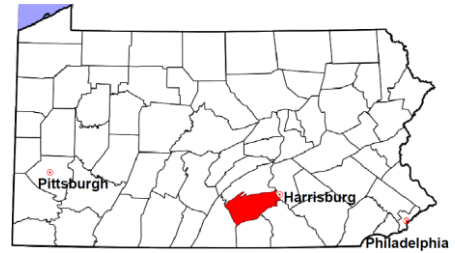


Cumberland County

2011 Population Estimate: 237,892
 Class of County: 3rd
 No. of Common Pleas Court Judgeships: 5



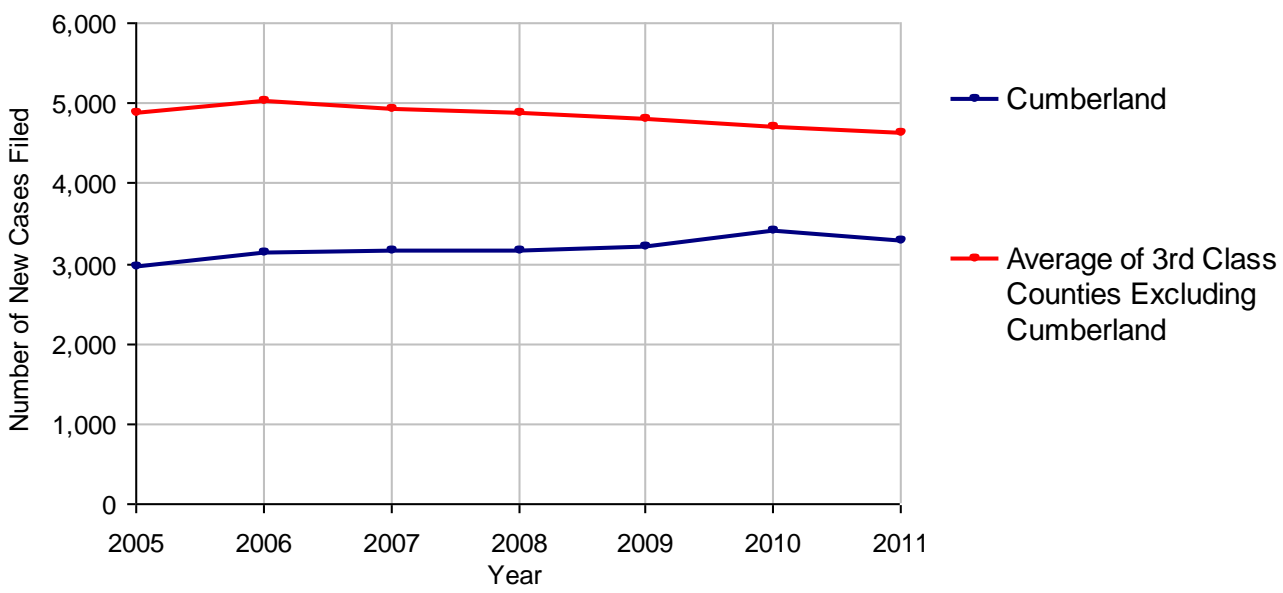
2011 Criminal	No. of Cases
Cases Pending 1/1/2011	1,972
New Cases Filed in 2011	3,277
Reopened Cases	143
Cases Available for Disposition	5,392
Disposed by:	
Withdrawn/Dismissed	152 4.3%
ARD	943 26.9%
Guilty Plea	2,150 61.2%
Non-Jury Trial	41 1.2%
Jury Trial	34 1.0%
Inactive	98 2.8%
Other	94 2.7%
Total Cases Disposed	3,512 100.0%
Cases Pending 12/31/2011	1,880
Cases Awaiting Sentencing	206



Age of Pending Cases as of 12/31/2011		
0-60 Days	479	25.5%
61-120 Days	384	20.4%
121-180 Days	438	23.3%
181-240 Days	234	12.4%
241-300 Days	128	6.8%
301-360 Days	91	4.8%
Over 360 Days	126	6.7%
Total	1,880	100.0%

Data provided by CPCMS

Criminal New Cases Filed, 2005-2011

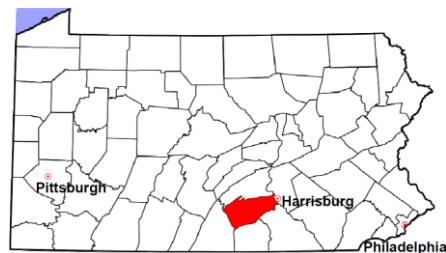


Cumberland County

2011 Population Estimate: 237,892

Class of County: 3rd

No. of Common Pleas Court Judgeships: 5



2011 Criminal - New Cases by Case Type



Case Type	Felony	Misdemeanor	Summary /Ungraded	Total
Person	125	269	1	395
Property	387	390	8	785
Drug	153	232	4	389
Weapon	16	11	0	27
Public Order	88	170	5	263
Motor Vehicle - DWI/DUI	0	1,400	6	1,406
Motor Vehicle - Other	0	12	0	12
Other	0	0	0	0
Total	769	2,484	24	3,277
	23.5%	75.8%	0.7%	100.0%

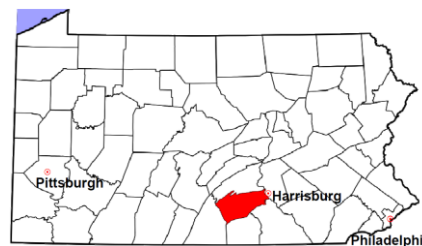
Data provided by CPCMS

Cumberland County

2011 Population Estimate: 237,892

Class of County: 3rd

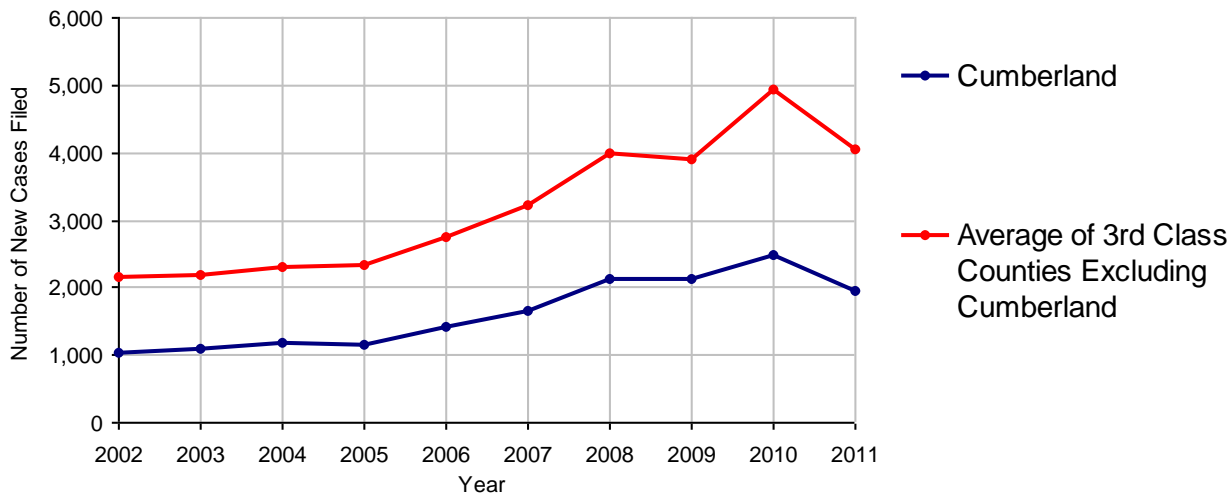
No. of Common Pleas Court Judgeships: 5



2011 Civil	Civil Action	Other	Total
Cases Pending 1/1/2011	1,052	1,072	2,124
Docketed Cases	1,329	626	1,955
Arbitration Appeals	1	12	13
Transferred In	5	6	11
Returned to Active	0	0	0
Cases Available for Processing	2,387	1,716	4,103
Disposed By:			
Default Judgments	4	841	845
Cases Decided by Arbitration Board	7	49	56
Dispositive Motions	0	78	78
Settlements	384	187	571
Moved to Inactive Status	0	0	0
Transferred/Withdrawn	26	12	38
Pa.R.J.A. 1901 Administrative Purge	0	0	0
Other	4	2	6
Jury Trial	15	3	18
Non-Jury Trial	8	2	10
Total Cases Disposed	448	1,174	1,622
Cases Pending 12/31/2011	1,939	542	2,481

Age of Pending Cases as of 12/31/2011 (Civil Action Only)		
0-6 months	677	34.9%
7-12 months	494	25.5%
13-18 months	766	39.5%
19-24 months	0	
25-30 months	2	0.1%
31-36 months	0	
37-42 months	0	
43-48 months	0	
49-54 months	0	
55-60 months	0	
61-66 months	0	
67-72 months	0	
Over 72 months	0	
Total	1,939	100.0%

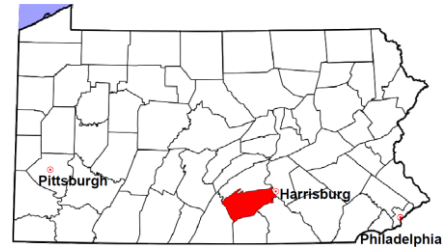
Docketed Cases, 2002-2011



Note: Prior to June 2010, docketed cases under the "Other" category were not reported. The reporting of these cases starting from June 2010 may contribute to an increase in docketed cases from 2009 to 2010.

Cumberland County

2011 Population Estimate: 237,892
 Class of County: 3rd
 No. of Common Pleas Court Judgeships: 5



2011 Civil - Docketed Cases Listed by Case Type

TORT (does not include mass tort)

Intentional	7
Malicious Prosecution	2
Motor Vehicle	153
Nuisance	0
Premise Liability	32
Product Liability	3
Slander/Libel/Defamation	2
Other	27

MASS TORT

Asbestos	0
Tobacco	0
Toxic Tort - DES	0
Toxic Tort - Implant	0
Toxic Waste	0
Other	0

PROFESSIONAL LIABILITY

Dental	1
Legal	2
Medical Malpractice	27
Other	5

CONTRACT

(does not include judgments)

Buyer Plaintiff	21
Debt Collection:	
Credit Card	583
Other	342
Employment Dispute:	
Discrimination	0
Other	11
Other	78

REAL PROPERTY

Ejectment*	42
Eminent Domain/ Condemnation*	8
Ground Rent	0
Landlord/Tenant Dispute	33
Mortgage Forclosures:	
Residential*	333
Commercial*	35
Partition of Real Property*	2
Quiet Title*	7
Other*	15

CIVIL APPEALS

Administrative Agencies

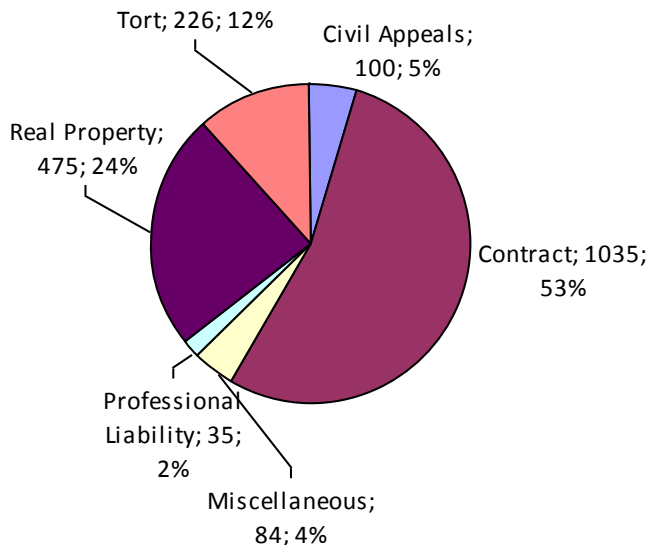
Board of Assessment*	18
Board of Elections*	0
Dept. of Transportation*	54
Zoning Board*	2
Statutory Appeal - Other*	10
Other*	16

MISCELLANEOUS

Common Law/ Statutory Arbitration*	0
Declaratory Judgment*	13
Mandamus*	1
Non-Domestic Relations Restraining Order*	0
Quo Warranto*	0
Replevin*	10
Other*	60

TOTAL DOCKETED CASES:
1,955

* Civil Other



Of the Docketed Cases:

Pro Se Filings:	60	3.1%
Class Action Suits:	6	0.3%
MDJ Appeals:	112	5.7%

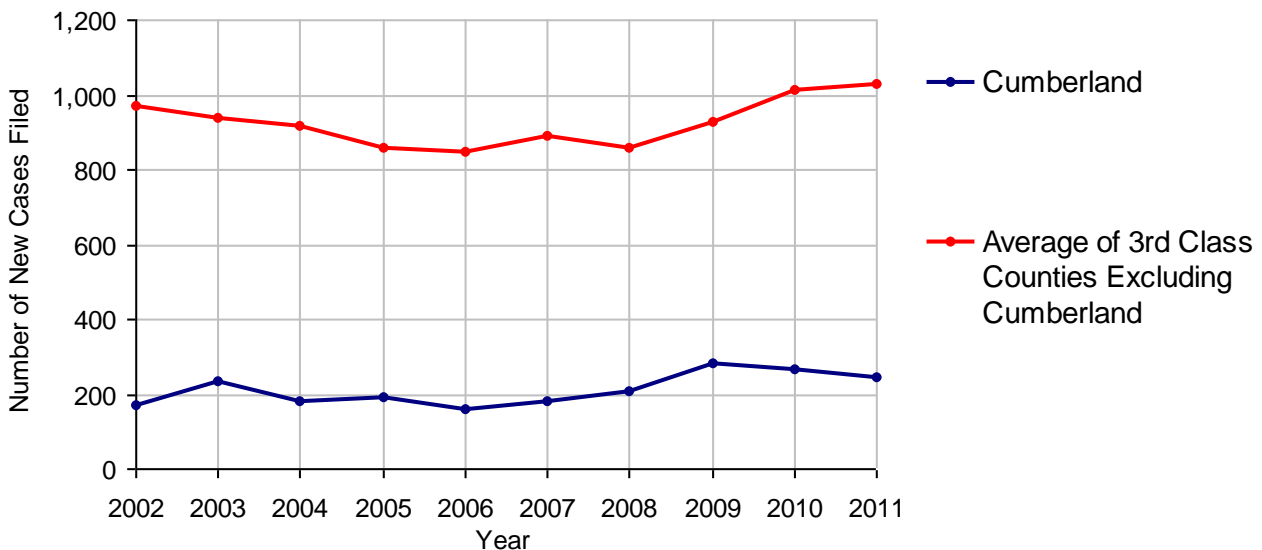
Cumberland County

2011 Population Estimate: 237,892
 Class of County: 3rd
 No. of Common Pleas Court Judgeships: 5



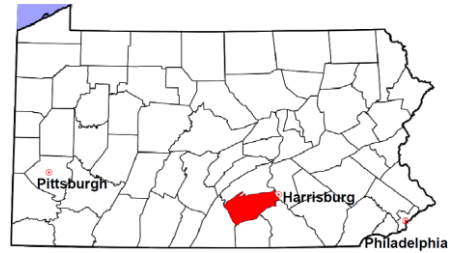
2011 Protection From Abuse	No. of Petitions
Cases Pending 1/1/2011	45
New Cases Filed in 2011	247
<i>Of these, Petitions Requesting Temporary Orders: 247 (100.0%)</i>	
<i>Temporary Orders DENIED: 6 (2.4%), Temporary Orders GRANTED: 241 (97.6%)</i>	
Cases Available for Processing	292
Processed By:	
Temporary Order DENIED After Ex Parte Hearing and No Evidentiary Hearing Scheduled	6 2.9%
Temporary Order DISMISSED After Evidentiary Hearing and No Final Order Entered	5 2.4%
Final Order DENIED After Evidentiary Hearing Before a Judge	3 1.4%
Final Order GRANTED After Evidentiary Hearing Before a Judge	79 38.2%
Plaintiff Did Not Appear For Evidentiary Hearing	3 1.4%
Final Order by STIPULATION OR AGREEMENT Between the Parties	74 35.7%
Petition WITHDRAWN by Plaintiff	34 16.4%
TRANSFERRED to Another Jurisdiction	0
DECEASED Party	0
Other	3 1.4%
Cases Processed	207 100.0%
Cases Pending 12/31/2011	85

PFA New Cases Filed, 2002-2011

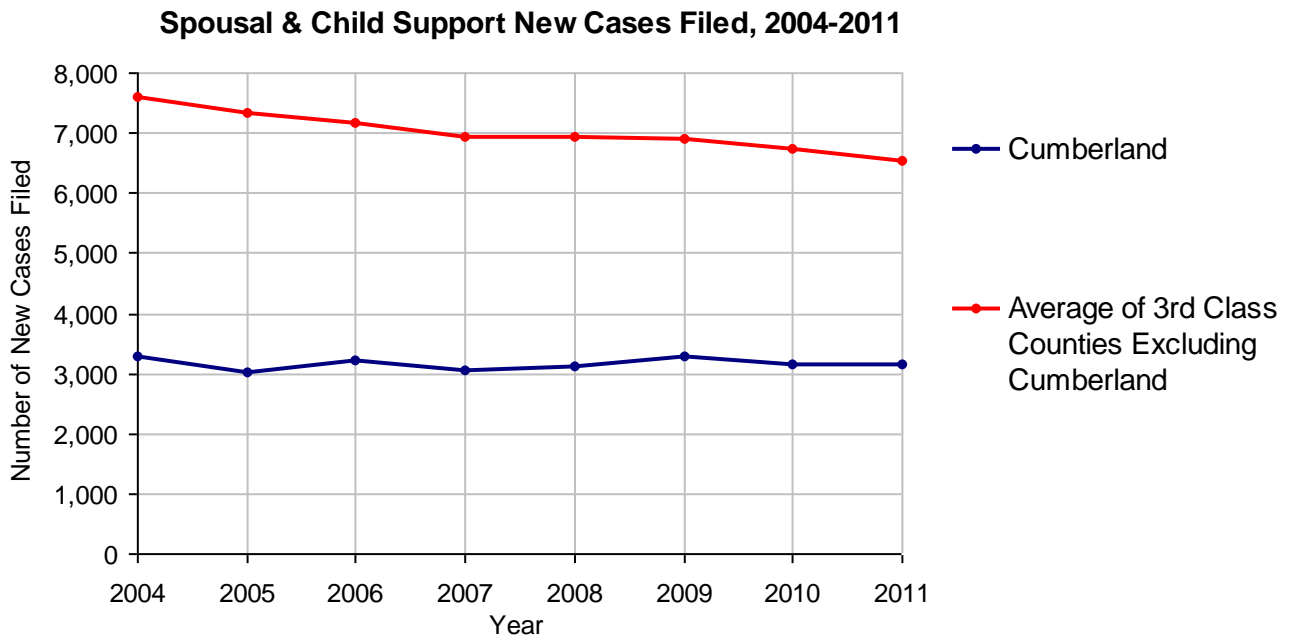


Cumberland County

2011 Population Estimate: 237,892
 Class of County: 3rd
 No. of Common Pleas Court Judgeships: 5



2011 Spousal & Child Support	No. of Petitions	
Cases Pending 1/1/2011	405	
New Cases Filed in 2011	3,156	
Dockets Transferred In (+)	73	
Dockets Transferred Out (-)	44	
Cases Available for Processing	3,590	
Processed By:		
Judge	42	1.3%
Intake Officer	2,964	92.2%
Hearing Officer	209	6.5%
Other	0	
Cases Processed	3,215	100.0%
Cases Pending 12/31/2011	375	

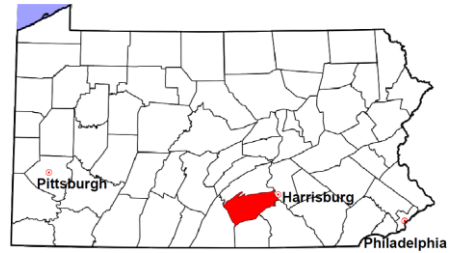


Cumberland County

2011 Population Estimate: 237,892

Class of County: 3rd

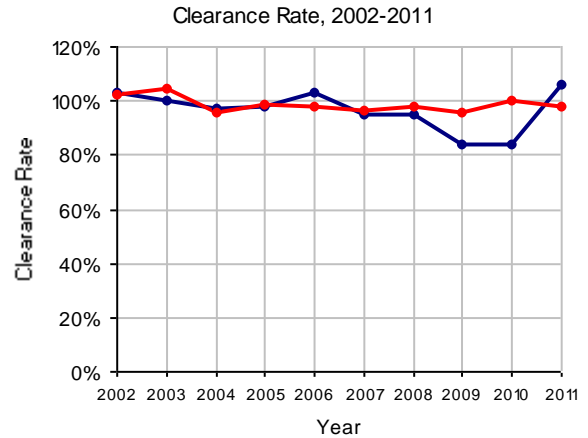
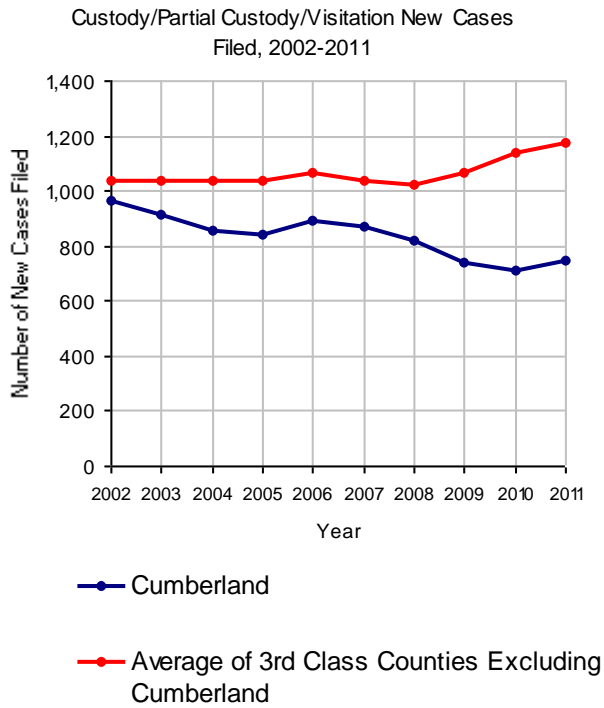
No. of Common Pleas Court Judgeships: 5



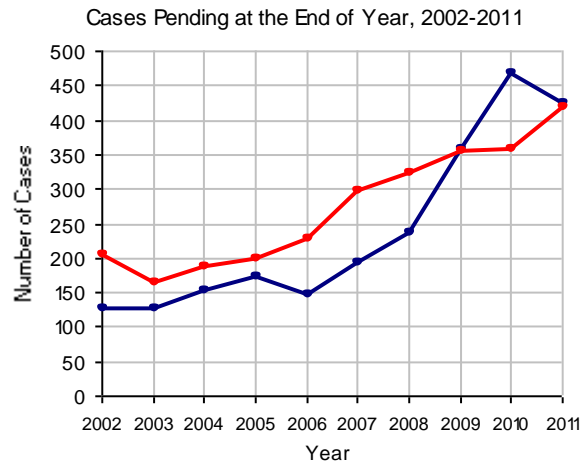
2011 Custody/Partial Custody/Visitation

No. of
Petitions

Cases Pending 1/1/2011	469
New Cases Filed in 2011	744
Cases Available for Processing	1,213
Processed By:	
Judge	81 10.3%
Non-Judicial Officer	480 61.0%
Other	226 28.7%
Cases Processed	787 100.0%
Cases Pending 12/31/2011	426

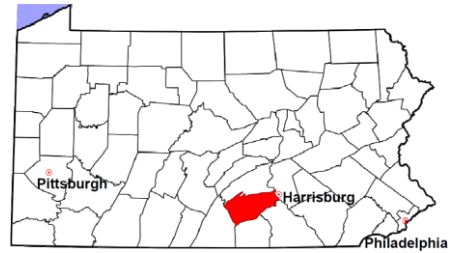


Note: Clearance Rate = Cases Processed / New Cases Filed



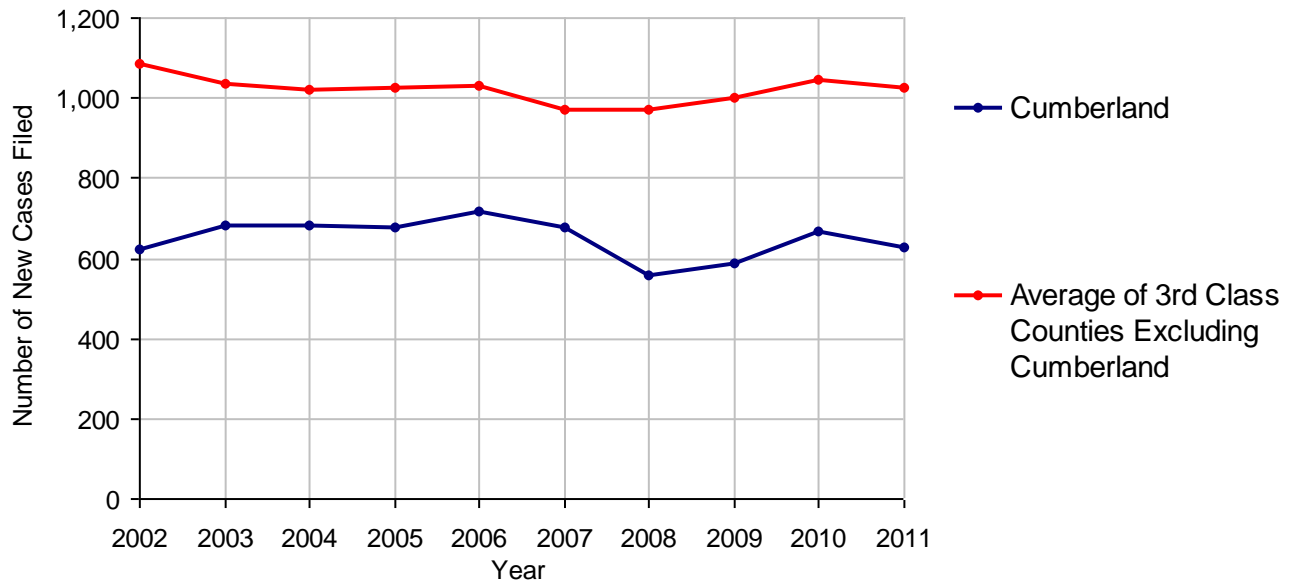
Cumberland County

2011 Population Estimate: 237,892
 Class of County: 3rd
 No. of Common Pleas Court Judgeships: 5



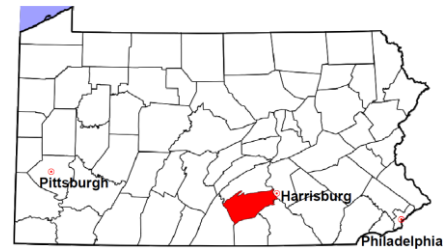
2011 Divorce	No. of Petitions	
Cases Pending 1/1/2011	1,088	
New Cases Filed in 2011	627	
Cases Available for Processing	1,715	
Processed By:		
Contested Before a Judge	0	
Contested Before a Master	8	1.1%
Uncontested	550	78.6%
Other	142	20.3%
Cases Processed	700	100.0%
Cases Pending 12/31/2011	1,015	

Divorce New Cases Filed, 2002-2011



Cumberland County

2011 Population Estimate: 237,892
 Class of County: 3rd
 No. of Common Pleas Court Judgeships: 5



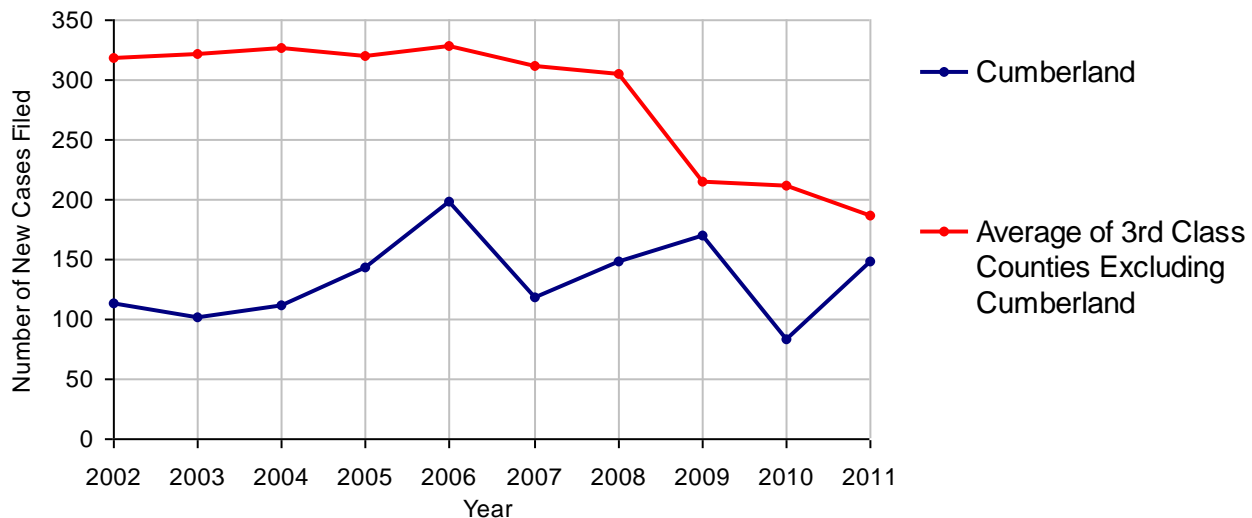
2011 Juvenile Dependency - Active Dependent Inventory



	Abuse/ Neglect	Status Offenses	Total
Cases Pending 1/1/2011	8	1	9
New Petitions Filed in 2011	140	9	149
Other	1	0	1
Total Petitions Available for Processing	149	10	159
Processed by:			
Adjudicated Dependent			
Judge	1	0	1
Master	83	8	91
Adjudicated NOT Dependent			
Judge	4	0	4
Master	45	0	45
Withdrawn/Dismissed/Inactive	1	0	1
Other	1	0	1
Total Petitions Processed	135	8	143
Cases Pending 12/31/2011	14	2	16

Data provided by CPCMS

Abuse/Neglect and Status Offenses New Cases Filed, 2002-2011



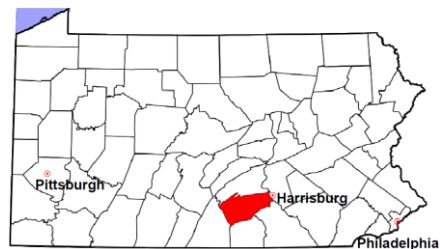
Note: Dependency data for 2002-2010 were collected manually. Dependency data for 2011 were provided by CPCMS.

Cumberland County

2011 Population Estimate: 237,892

Class of County: 3rd

No. of Common Pleas Court Judgeships: 5



2011 Juvenile Dependency - Adjudicated Dependent Inventory



	Abuse/ Neglect	Status Offenses	Total	
Cases Pending 1/1/2011	178	12	190	
New Adjudicated Dependent Cases	84	8	92	
Other	6	0	6	
Total Adjudicated Dependent Cases	268	20	288	
<u>Court Supervision Terminated:</u>				
Family Reunification	15	0	15	12.6%
Adoption	39	0	39	32.8%
Placement with a Relative/Guardian	39	5	44	37.0%
Aged Out	11	1	12	10.1%
Other Permanency Outcomes*	5	0	5	4.2%
Other**	2	2	4	3.4%
Total Adjudicated Dependent Cases Terminated	111	8	119	100.0%
Cases Pending 12/31/2011	157	12	169	

Data provided by CPCMS

* Other Permanency Outcomes include: adjudicated delinquent, death due to natural causes, emancipation, permanent living arrangement, and parent has come forward.

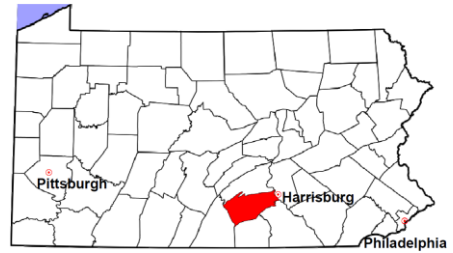
** Other includes cases where Court Supervision is terminated due to transfer out of jurisdiction, withdrawal and administrative closures.

Cumberland County

2011 Population Estimate: 237,892

Class of County: 3rd

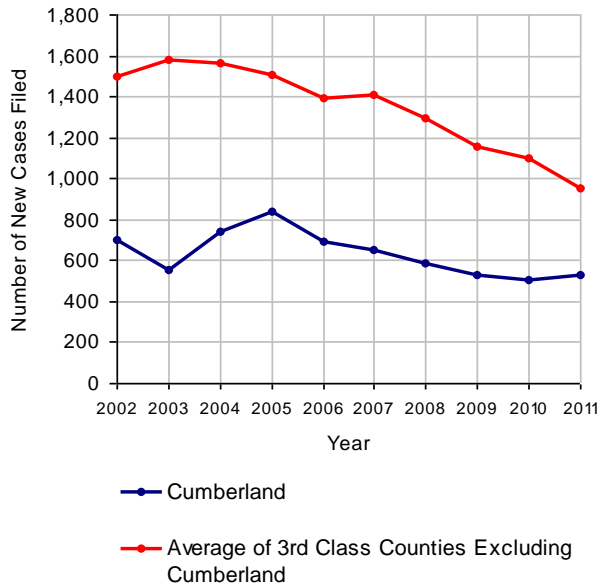
No. of Common Pleas Court Judgeships: 5



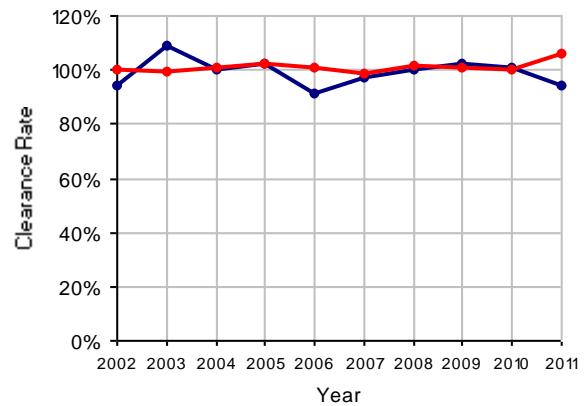
2011 Juvenile Delinquency

	No. of Cases
Cases Pending 1/1/2011	98
New Cases Filed in 2011	531
Cases Available for Processing	629
Processed By:	
Judge	129 25.7%
Non-Judicial Officer	329 65.5%
Other	44 8.8%
Cases Processed	502 100.0%
Cases Pending 12/31/2011	127

Juvenile Delinquency New Cases Filed, 2002-2011

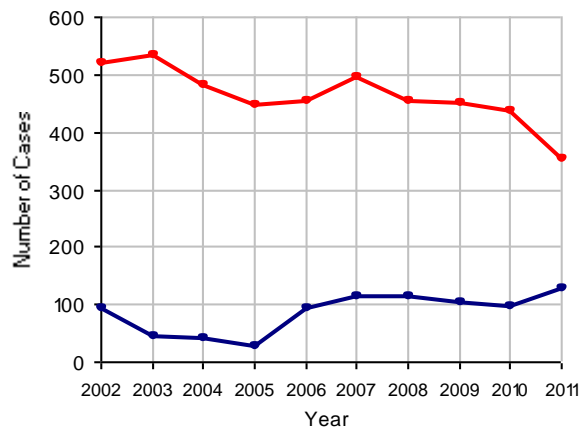


Clearance Rate, 2002-2011



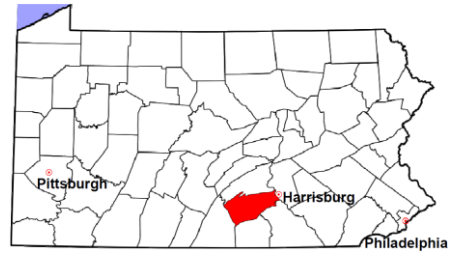
Note: Clearance Rate = Cases Processed / New Cases Filed

Cases Pending at the End of Year, 2002-2011



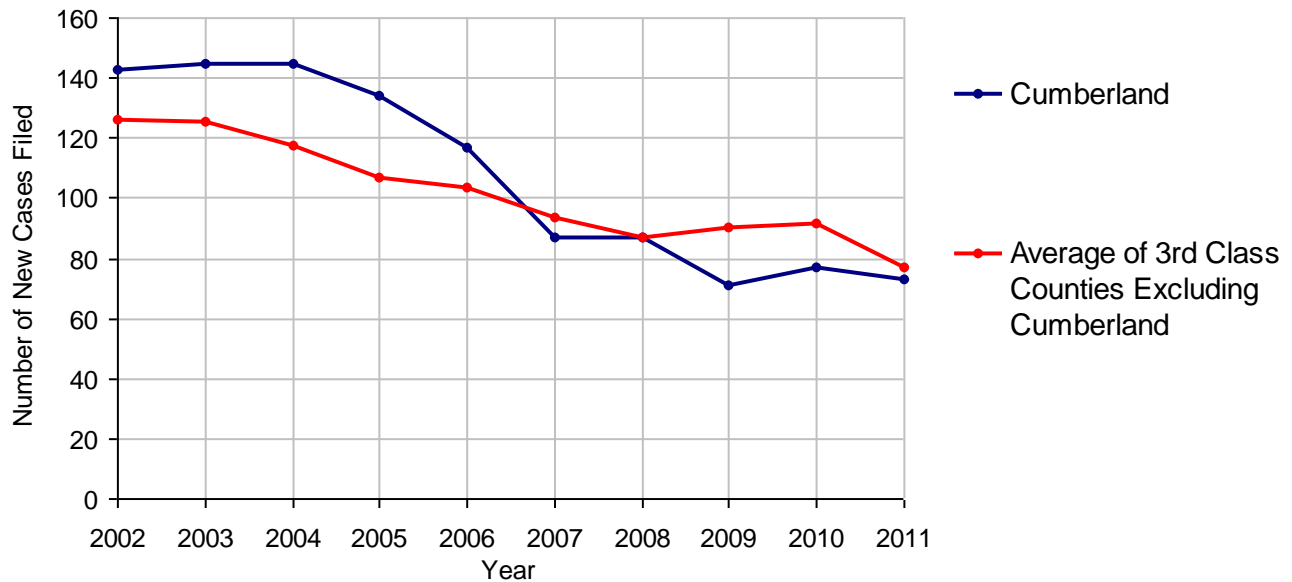
Cumberland County

2011 Population Estimate: 237,892
 Class of County: 3rd
 No. of Common Pleas Court Judgeships: 5



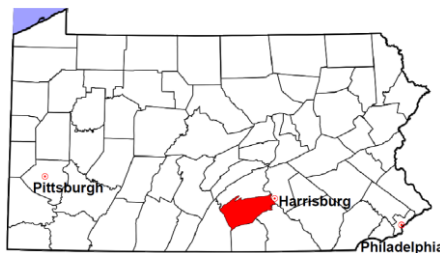
2011 Accounts	No. of Cases	
Cases Pending 1/1/2011	15	
New Cases Filed in 2011	73	
Cases Available for Processing	88	
Processed By:		
Contested before a Judge	1	1.5%
Contested before a Non-judicial Officer	0	
Uncontested	63	96.9%
Other	1	1.5%
Cases Processed	65	100.0%
Cases Pending 12/31/2011	23	

Accounts New Cases Filed, 2002-2011



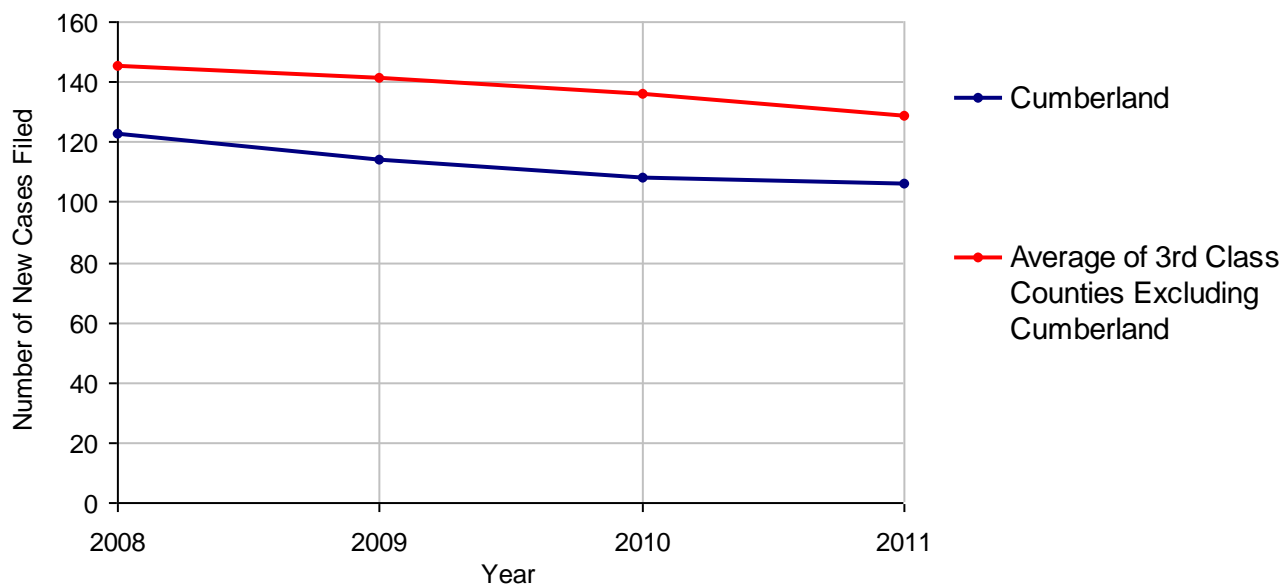
Cumberland County

2011 Population Estimate: 237,892
 Class of County: 3rd
 No. of Common Pleas Court Judgeships: 5



2011 Adoptions		No. of Cases	
Cases Pending 1/1/2011		22	
New Cases Filed in 2011		106	
Cases Available for Processing		128	
Processed By:			
Contested before a Judge	Granted	0	
	Denied	0	
Uncontested	Granted	98	96.1%
	Denied	0	
Other		4	3.9%
Cases Processed		102	100.0%
Cases Pending 12/31/2011		26	

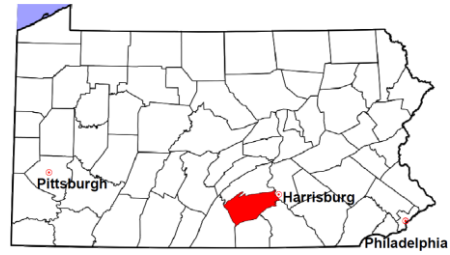
Adoptions New Cases Filed, 2008-2011



Note: Prior to 2008, each petition was counted as one new case, regardless of the number of children listed on the petition. Starting in 2008, each child listed on a petition is counted as a separate case. Therefore, statistics for the years since 2008 should not be compared to those for the years prior to 2008.

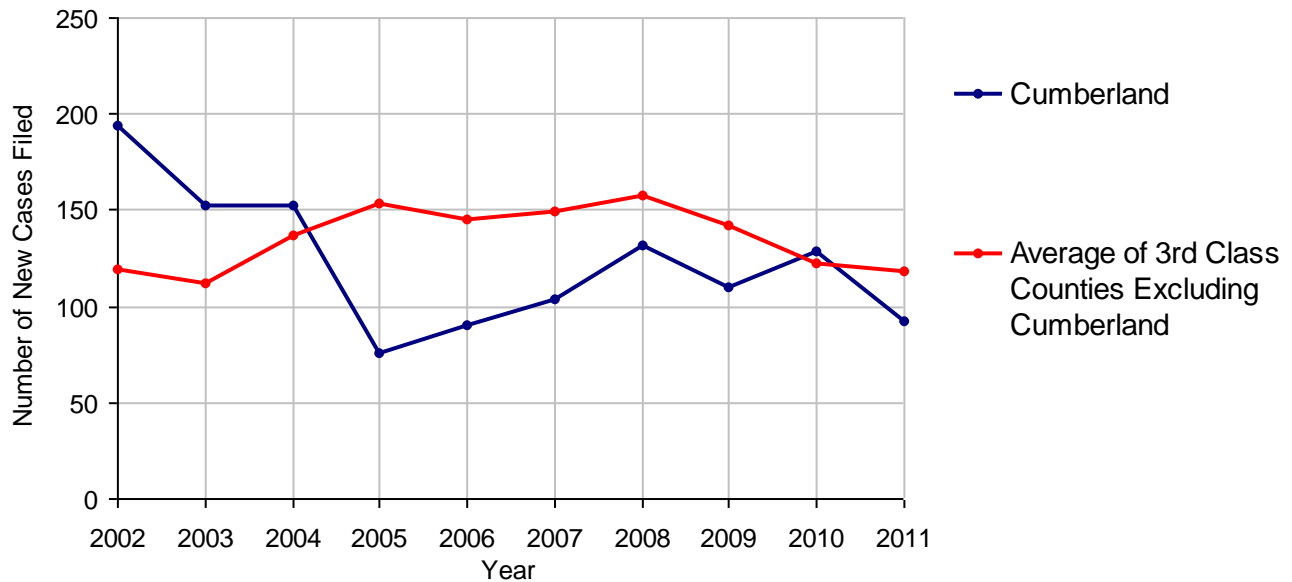
Cumberland County

2011 Population Estimate: 237,892
 Class of County: 3rd
 No. of Common Pleas Court Judgeships: 5



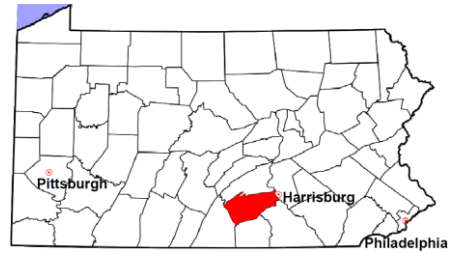
2011 Relinquishments/Terminations		No. of Cases
Cases Pending 1/1/2011		31
New Cases Filed in 2011		92
Cases Available for Processing		123
Processed By:		
Contested before a Judge	26	23.9%
Uncontested	79	72.5%
Other	4	3.7%
Cases Processed	109	100.0%
Cases Pending 12/31/2011		14

Relinquishments/Terminations New Cases Filed, 2002-2011



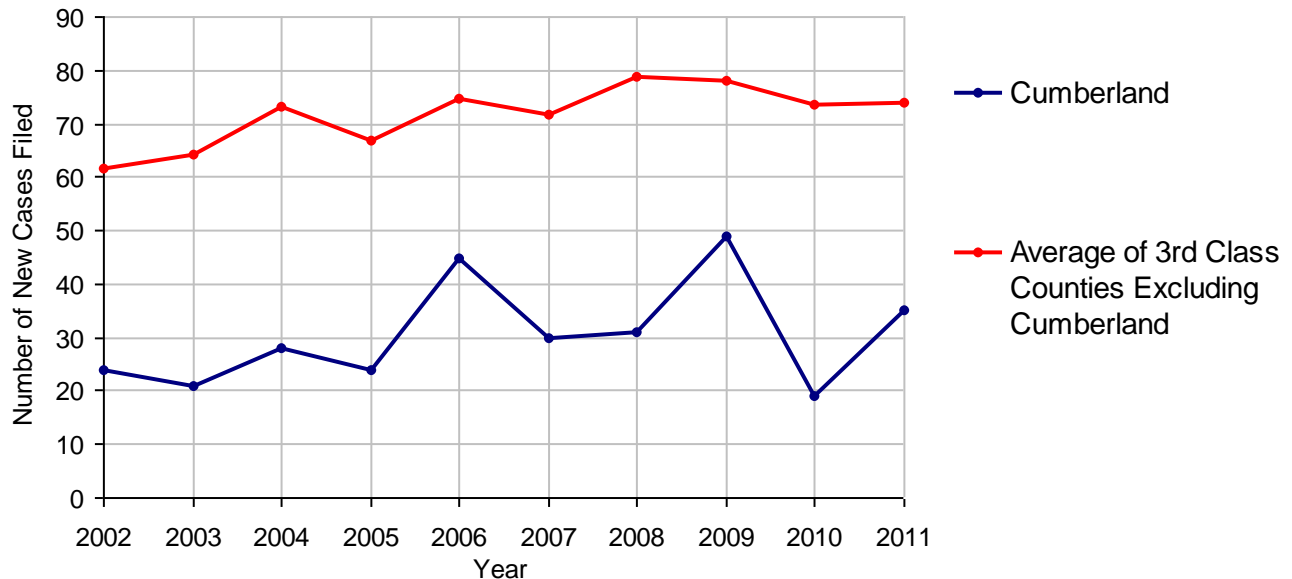
Cumberland County

2011 Population Estimate: 237,892
 Class of County: 3rd
 No. of Common Pleas Court Judgeships: 5



2011 Appointment of Guardians		No. of Cases
Cases Pending 1/1/2011		1
New Cases Filed in 2011		35
Cases Available for Processing		36
Processed By:		
Contested before a Judge	7	22.6%
Uncontested	20	64.5%
Other	4	12.9%
Cases Processed	31	100.0%
Cases Pending 12/31/2011		5

Appointment of Guardians New Cases Filed, 2002-2011

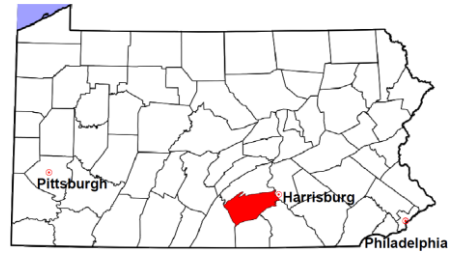


Cumberland County

2011 Population Estimate: 237,892

Class of County: 3rd

No. of Common Pleas Court Judgeships: 5



2011 Jury Activity and Performance Measures

A. Juror Days	1,936	
B. Number Sent to Voir Dire	2,152	
Voir Dire Attendance Rate (B/A * 100)		111.2%
C. Number of Jurors Selected	774	
Juror Selection Rate (C/B * 100)		36.0%

Note: In mid-2011, AOPC began utilizing the National Center for State Courts' Jury Managers' Toolbox for collecting jury data. This has resulted in limited jury performance measures being reported for 2011. Additional data will be available in 2012.