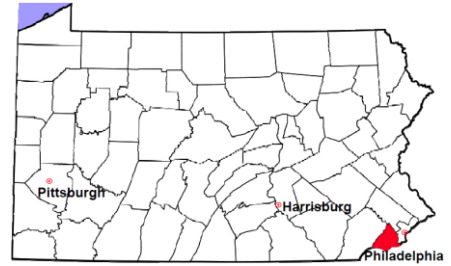


# Delaware County

2011 Population Estimate: 559,494  
 Class of County: 2A  
 No. of Common Pleas Court Judgeships: 20



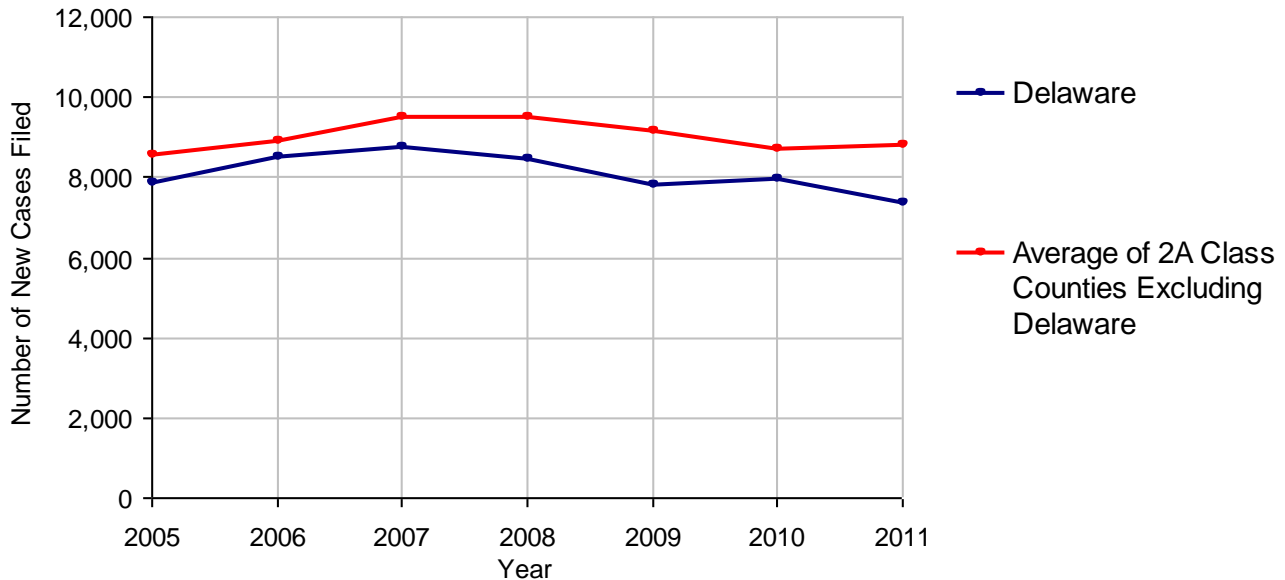
<b>2011 Criminal</b>	<b>No. of Cases</b>
Cases Pending 1/1/2011	2,124
New Cases Filed in 2011	7,400
Reopened Cases	471
<b>Cases Available for Disposition</b>	<b>9,995</b>
<b>Disposed by:</b>	
Withdrawn/Dismissed	127 1.6%
ARD	1,162 15.0%
Guilty Plea	5,868 75.6%
Non-Jury Trial	113 1.5%
Jury Trial	72 0.9%
Inactive	308 4.0%
Other	107 1.4%
<b>Total Cases Disposed</b>	<b>7,757 100.0%</b>
<b>Cases Pending 12/31/2011</b>	<b>2,238</b>
Cases Awaiting Sentencing	124



<b>Age of Pending Cases as of 12/31/2011</b>		
0-60 Days	1,102	49.2%
61-120 Days	565	25.2%
121-180 Days	232	10.4%
181-240 Days	103	4.6%
241-300 Days	81	3.6%
301-360 Days	33	1.5%
Over 360 Days	122	5.5%
<b>Total</b>	<b>2,238</b>	<b>100.0%</b>

Data provided by CPCMS

**Criminal New Cases Filed, 2005-2011**

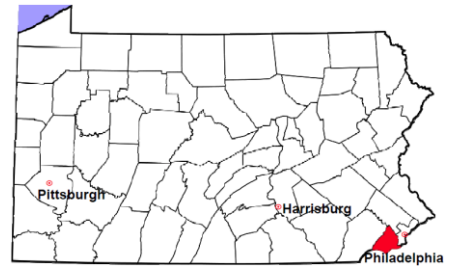


# Delaware County

2011 Population Estimate: 559,494

Class of County: 2A

No. of Common Pleas Court Judgeships: 20



## 2011 Criminal - New Cases by Case Type



Case Type	Felony	Misdemeanor	Summary /Ungraded	Total
Person	652	492	0	1,144
Property	1,117	782	18	1,917
Drug	679	1,152	4	1,835
Weapon	92	30	0	122
Public Order	233	510	6	749
Motor Vehicle - DWI/DUI	0	1,601	0	1,601
Motor Vehicle - Other	1	27	0	28
Other	3	1	0	4
<b>Total</b>	<b>2,777</b>	<b>4,595</b>	<b>28</b>	<b>7,400</b>
	<b>37.5%</b>	<b>62.1%</b>	<b>0.4%</b>	<b>100.0%</b>

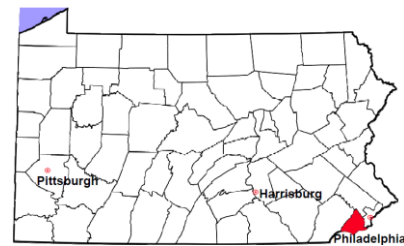
Data provided by CPCMS

# Delaware County

2011 Population Estimate: 559,494

Class of County: 2A

No. of Common Pleas Court Judgeships: 20

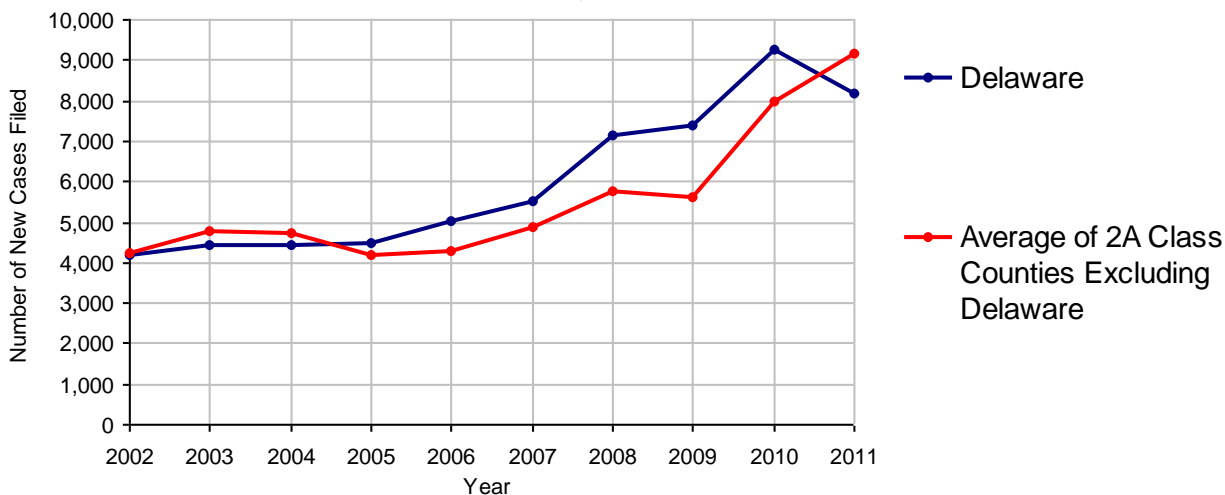


<b>2011 Civil</b>	<b>Civil Action</b>	<b>Other</b>	<b>Total</b>
Cases Pending 1/1/2011	3,108	2,738	5,846
Docketed Cases	5,247	2,912	8,159
Arbitration Appeals	212	0	212
Transferred In	32	0	32
Returned to Active	51	10	61
<b>Cases Available for Processing</b>	<b>8,650</b>	<b>5,660</b>	<b>14,310</b>
Disposed By:			
Default Judgments	208	1,126	1,334
Cases Decided by Arbitration Board	726	10	736
Dispositive Motions	166	133	299
Settlements	2,639	578	3,217
Moved to Inactive Status	435	575	1,010
Transferred/Withdrawn	339	106	445
Pa.R.J.A. 1901 Administrative Purge	0	0	0
Other	175	58	233
Jury Trial	71	1	72
Non-Jury Trial	249	21	270
<b>Total Cases Disposed</b>	<b>5,008</b>	<b>2,608</b>	<b>7,616</b>
<b>Cases Pending 12/31/2011</b>	<b>3,642</b>	<b>3,052</b>	<b>6,694</b>

## Age of Pending Cases as of 12/31/2011 (Civil Action Only)

0-6 months	1,440	39.5%
7-12 months	1,038	28.5%
13-18 months	645	17.7%
19-24 months	340	9.3%
25-30 months	44	1.2%
31-36 months	29	0.8%
37-42 months	19	0.5%
43-48 months	6	0.2%
49-54 months	5	0.1%
55-60 months	8	0.2%
61-66 months	3	0.1%
67-72 months	3	0.1%
Over 72 months	62	1.7%
<b>Total</b>	<b>3,642</b>	<b>100.0%</b>

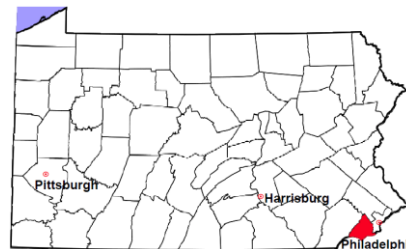
Docketed Cases, 2002-2011



Note: Prior to June 2010, docketed cases under the "Other" category were not reported. The reporting of these cases starting from June 2010 may contribute to an increase in docketed cases from 2009 to 2010.

# Delaware County

2011 Population Estimate: 559,494  
 Class of County: 2A  
 No. of Common Pleas Court Judgeships: 20



## 2011 Civil - Docketed Cases Listed by Case Type

### TORT (does not include mass tort)

Intentional	31
Malicious Prosecution	4
Motor Vehicle	1,130
Nuisance	4
Premise Liability	303
Product Liability	14
Slander/Libel/Defamation	10
Other	140

### MASS TORT

Asbestos	0
Tobacco	0
Toxic Tort - DES	0
Toxic Tort - Implant	0
Toxic Waste	0
Other	1

### PROFESSIONAL LIABILITY

Dental	9
Legal	9
Medical Malpractice	59
Other	7

### CONTRACT

(does not include judgments)

Buyer Plaintiff	50
Debt Collection:	
Credit Card	2,333
Debt Collection: Other	630
Employment Dispute:	
Discrimination	6
Employment Dispute: Other	37
Other	287

### REAL PROPERTY

Ejectment*	251
Eminent Domain/ Condemnation*	9
Ground Rent	2
Landlord/Tenant Dispute	181
Mortgage Forclosures:	
Residential*	1,508
Commercial*	12
Partition of Real Property*	11
Quiet Title*	64
Other*	93

### CIVIL APPEALS

*Administrative Agencies*

Board of Assessment*	210
Board of Elections*	0
Dept. of Transportation*	278
Zoning Board*	48
Statutory Appeal - Other*	8
Other*	16

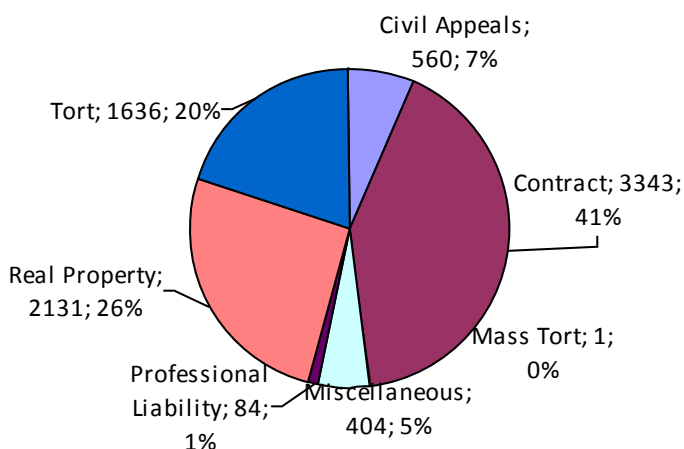
### MISCELLANEOUS

Common Law/ Statutory Arbitration*	4
Declaratory Judgment*	23
Mandamus*	5
Non-Domestic Relations Restraining Order*	62
Quo Warranto*	0
Replevin*	51
Other*	259

### **TOTAL DOCKETED CASES:**

**8,159**

\* Civil Other



### **Of the Docketed Cases:**

Pro Se Filings:	121	1.5%
Class Action Suits:	1	<0.1%
MDJ Appeals:	351	4.3%

# Delaware County

2011 Population Estimate: 559,494  
 Class of County: 2A  
 No. of Common Pleas Court Judgeships: 20



## 2011 Protection From Abuse

**No. of  
Petitions**

Cases Pending 1/1/2011	246
New Cases Filed in 2011	2,003

*Of these, Petitions Requesting Temporary Orders: 2,003 (100.0%)  
 Temporary Orders DENIED: 311 (15.5%), Temporary Orders GRANTED: 1,692 (84.5%)*

**Cases Available for Processing 2,249**

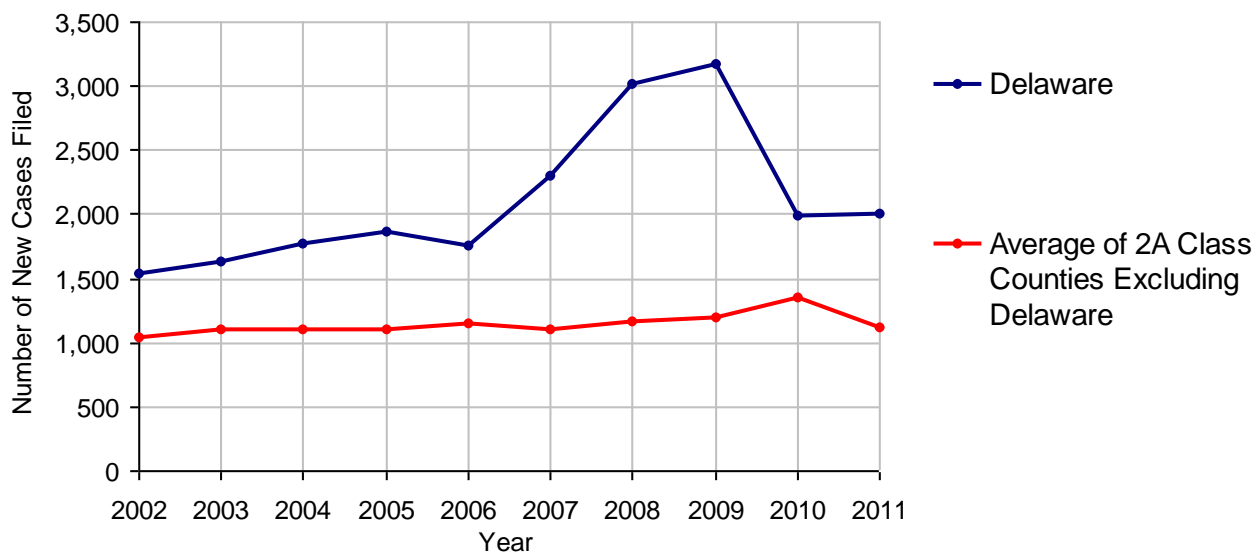
Processed By:

Temporary Order DENIED After Ex Parte Hearing and No Evidentiary Hearing Scheduled	41	2.0%
Temporary Order DISMISSED After Evidentiary Hearing and No Final Order Entered	253	12.6%
Final Order DENIED After Evidentiary Hearing Before a Judge	74	3.7%
Final Order GRANTED After Evidentiary Hearing Before a Judge	364	18.1%
Plaintiff Did Not Appear For Evidentiary Hearing	476	23.6%
Final Order by STIPULATION OR AGREEMENT Between the Parties	284	14.1%
Petition WITHDRAWN by Plaintiff	518	25.7%
TRANSFERRED to Another Jurisdiction	0	
DECEASED Party	4	0.2%
Other	0	

**Cases Processed 2,014 100.0%**

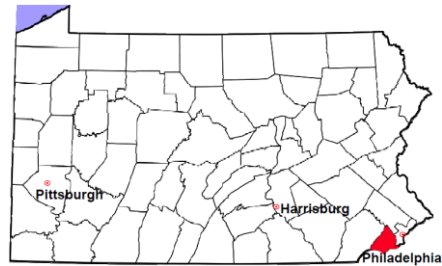
**Cases Pending 12/31/2011 235**

**PFA New Cases Filed, 2002-2011**

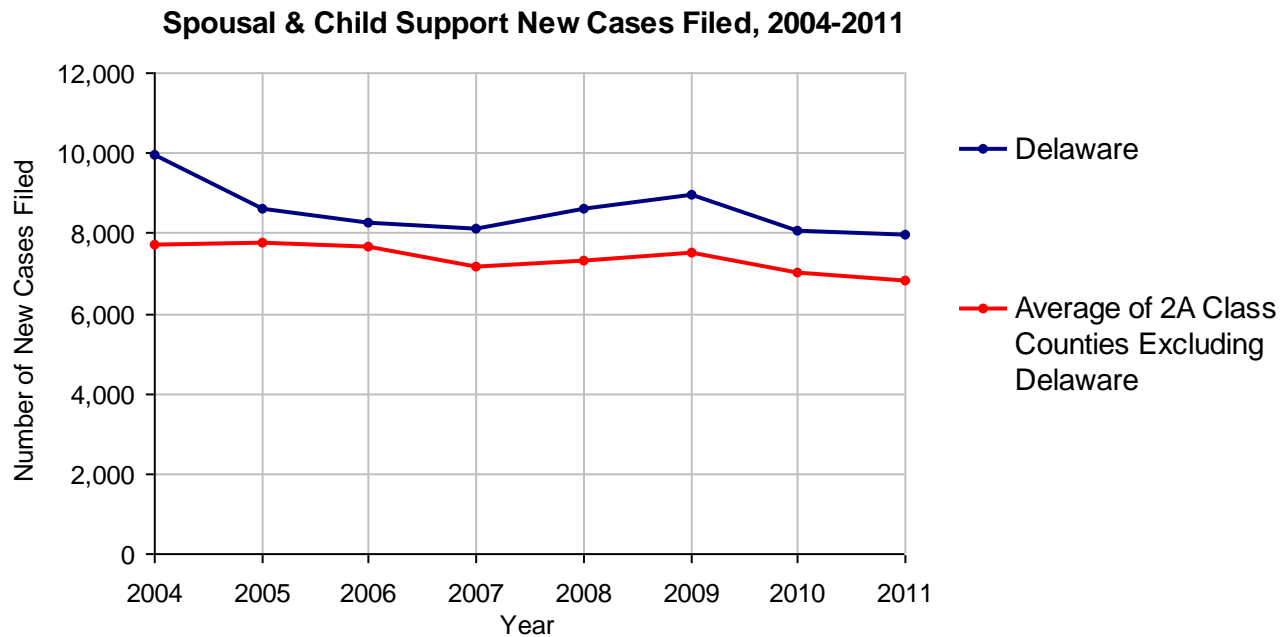


# Delaware County

2011 Population Estimate: 559,494  
 Class of County: 2A  
 No. of Common Pleas Court Judgeships: 20



<b>2011 Spousal &amp; Child Support</b>	<b>No. of Petitions</b>	
Cases Pending 1/1/2011	2,157	
New Cases Filed in 2011	7,959	
Dockets Transferred In (+)	136	
Dockets Transferred Out (-)	152	
<b>Cases Available for Processing</b>	<b>10,100</b>	
Processed By:		
Judge	785	10.1%
Intake Officer	4,597	59.2%
Hearing Officer	2,384	30.7%
Other	3	<0.1%
<b>Cases Processed</b>	<b>7,769</b>	<b>100.0%</b>
<b>Cases Pending 12/31/2011</b>	<b>2,331</b>	

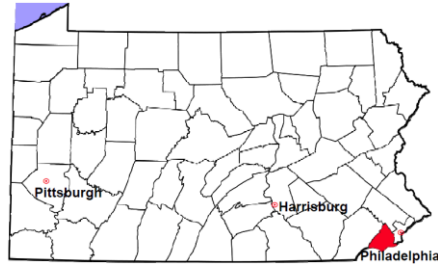


# Delaware County

2011 Population Estimate: 559,494

Class of County: 2A

No. of Common Pleas Court Judgeships: 20



## 2011 Custody/Partial Custody/Visitation

No. of  
Petitions

Cases Pending 1/1/2011

327

New Cases Filed in 2011

2,299

**Cases Available for Processing**

**2,626**

Processed By:

Judge

193

8.9%

Non-Judicial Officer

1,796

82.6%

Other

185

8.5%

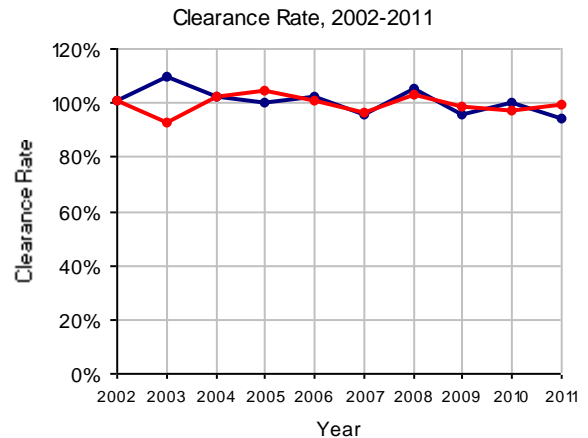
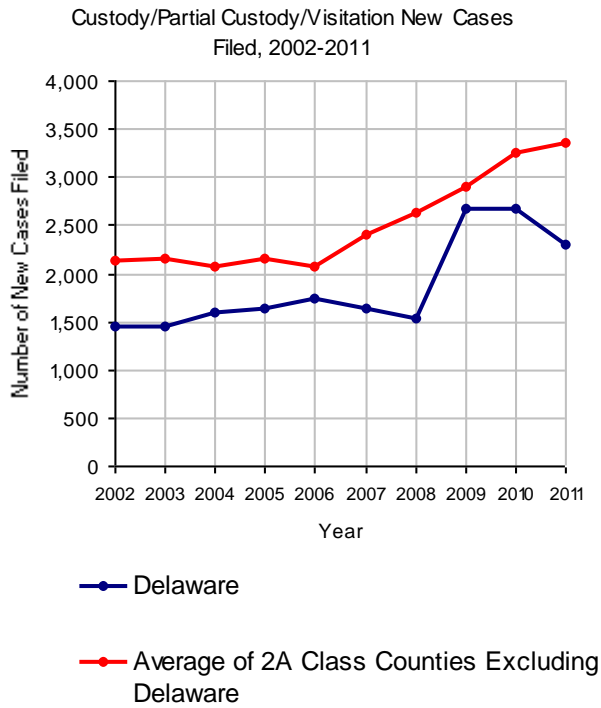
**Cases Processed**

**2,174**

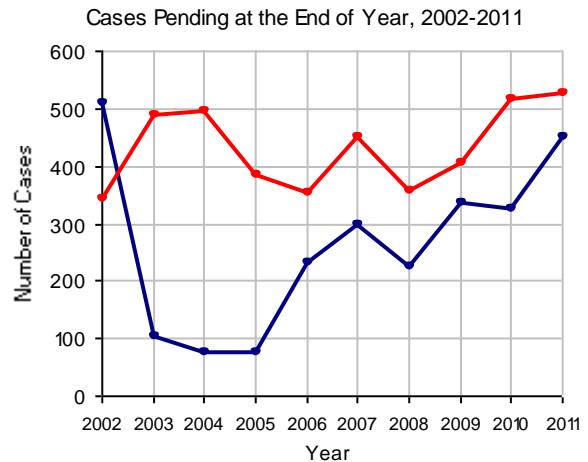
**100.0%**

**Cases Pending 12/31/2011**

**452**

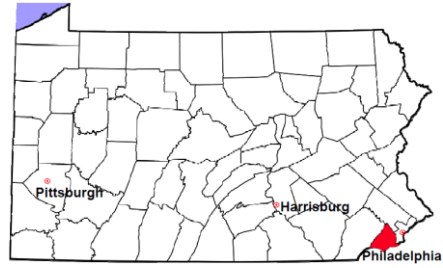


Note: Clearance Rate = Cases Processed / New Cases Filed



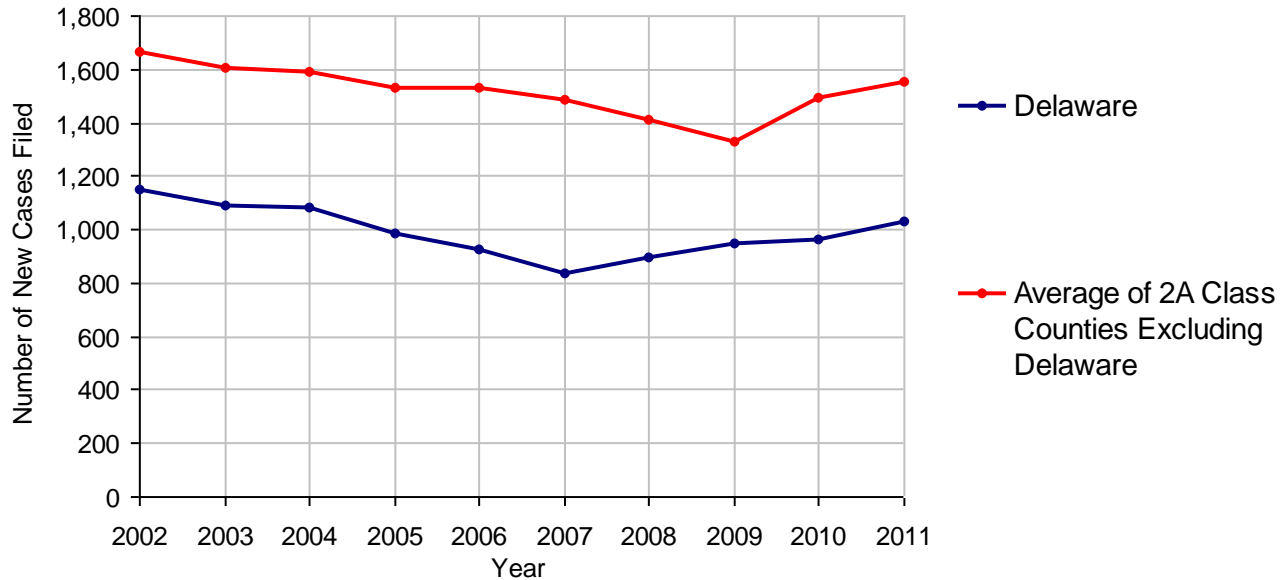
# Delaware County

2011 Population Estimate: 559,494  
 Class of County: 2A  
 No. of Common Pleas Court Judgeships: 20



<b>2011 Divorce</b>	<b>No. of Petitions</b>	
Cases Pending 1/1/2011	2,918	
New Cases Filed in 2011	1,029	
<b>Cases Available for Processing</b>	<b>3,947</b>	
Processed By:		
Contested Before a Judge	0	
Contested Before a Master	0	
Uncontested	783	99.0%
Other	8	1.0%
<b>Cases Processed</b>	<b>791</b>	<b>100.0%</b>
<b>Cases Pending 12/31/2011</b>	<b>3,156</b>	

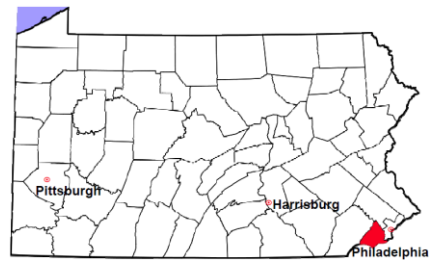
**Divorce New Cases Filed, 2002-2011**





# Delaware County

2011 Population Estimate: 559,494  
 Class of County: 2A  
 No. of Common Pleas Court Judgeships: 20



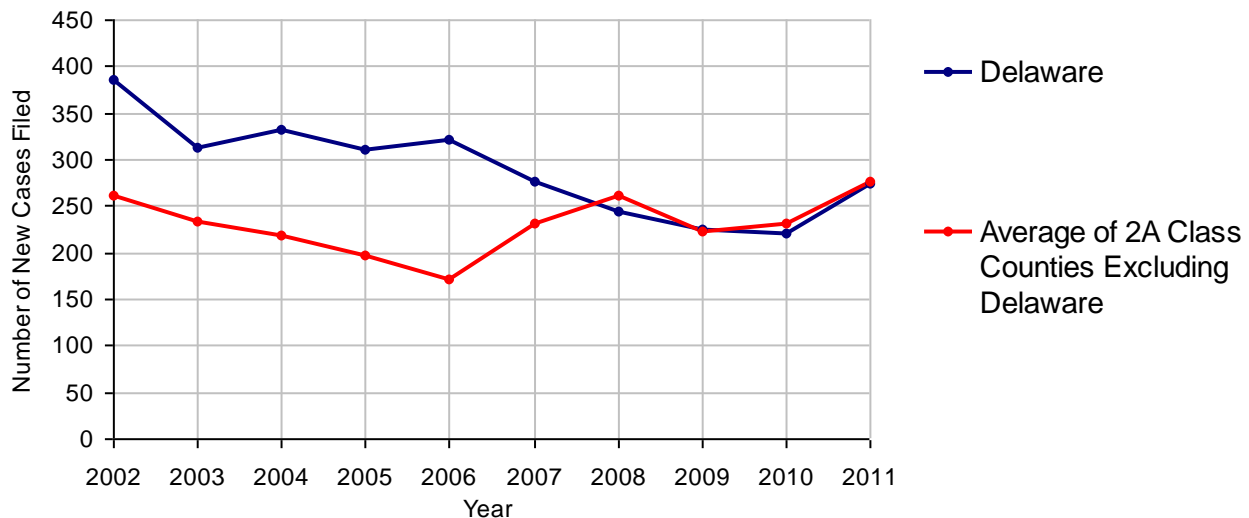
## 2011 Juvenile Dependency - Active Dependent Inventory



	Abuse/ Neglect	Status Offenses	Total
Cases Pending 1/1/2011	17	0	17
New Petitions Filed in 2011	274	0	274
Other	9	0	9
<b>Total Petitions Available for Processing</b>	<b>300</b>	<b>0</b>	<b>300</b>
Processed by:			
Adjudicated Dependent			
Judge	7	0	7
Master	194	0	194
Adjudicated NOT Dependent			
Judge	1	0	1
Master	8	0	8
Withdrawn/Dismissed/Inactive	2	0	2
Other	57	0	57
<b>Total Petitions Processed</b>	<b>269</b>	<b>0</b>	<b>269</b>
<b>Cases Pending 12/31/2011</b>	<b>31</b>	<b>0</b>	<b>31</b>

Data provided by CPCMS

**Abuse/Neglect and Status Offenses New Cases Filed, 2002-2011**



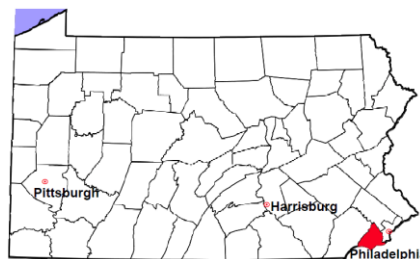
Note: Dependency data for 2002-2010 were collected manually. Dependency data for 2011 were provided by CPCMS.

# Delaware County

2011 Population Estimate: 559,494

Class of County: 2A

No. of Common Pleas Court Judgeships: 20



## 2011 Juvenile Dependency - Adjudicated Dependent Inventory



	Abuse/ Neglect	Status Offenses	Total	
Cases Pending 1/1/2011	597	2	599	
New Adjudicated Dependent Cases	201	0	201	
Other	13	0	13	
<b>Total Adjudicated Dependent Cases</b>	<b>811</b>	<b>2</b>	<b>813</b>	
<b><u>Court Supervision Terminated:</u></b>				
Family Reunification	19	1	20	9.0%
Adoption	73	0	73	32.7%
Placement with a Relative/Guardian	72	1	73	32.7%
Aged Out	26	0	26	11.7%
Other Permanency Outcomes*	11	0	11	4.9%
Other**	20	0	20	9.0%
<b>Total Adjudicated Dependent Cases Terminated</b>	<b>221</b>	<b>2</b>	<b>223</b>	<b>100.0%</b>
<b>Cases Pending 12/31/2011</b>	<b>590</b>	<b>0</b>	<b>590</b>	

Data provided by CPCMS

\* Other Permanency Outcomes include: adjudicated delinquent, death due to natural causes, emancipation, permanent living arrangement, and parent has come forward.

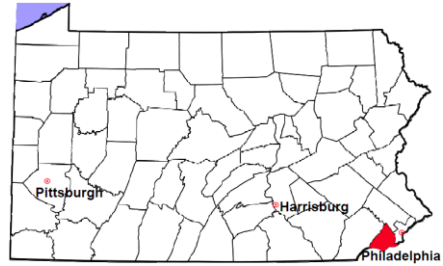
\*\* Other includes cases where Court Supervision is terminated due to transfer out of jurisdiction, withdrawal and administrative closures.

# Delaware County

2011 Population Estimate: 559,494

Class of County: 2A

No. of Common Pleas Court Judgeships: 20



## 2011 Juvenile Delinquency

**No. of Cases**

Cases Pending 1/1/2011 972

New Cases Filed in 2011 1,410

**Cases Available for Processing 2,382**

Processed By:

Judge 681 45.9%

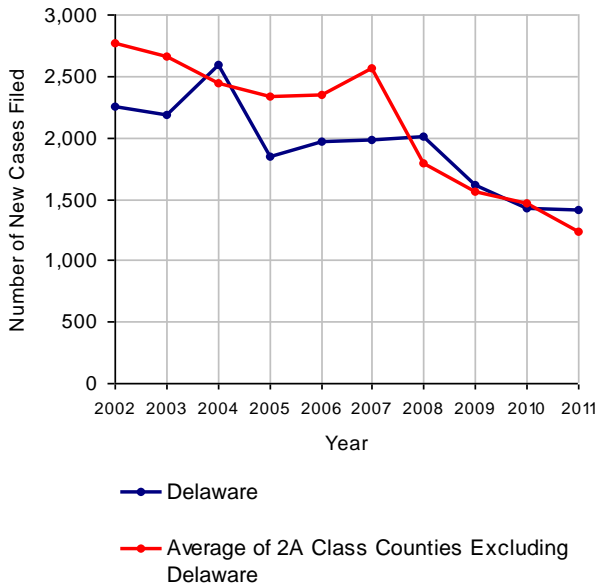
**Non-Judicial Officer 576 38.8%**

Other 228 15.4%

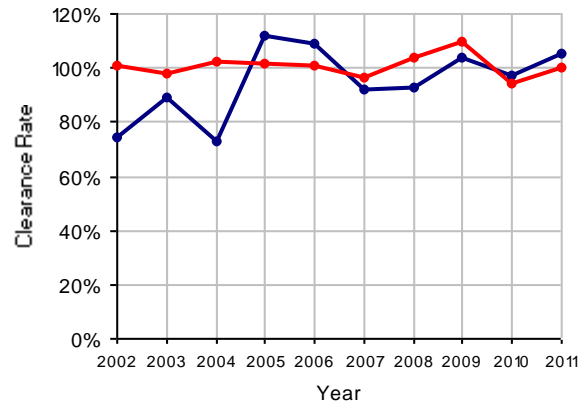
**Cases Processed 1,485 100.0%**

**Cases Pending 12/31/2011 897**

Juvenile Delinquency New Cases Filed, 2002-2011

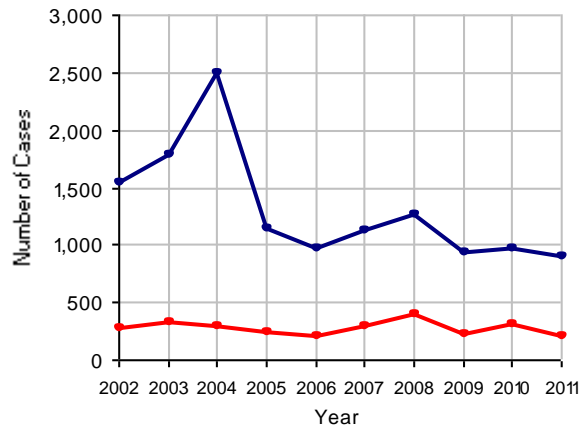


Clearance Rate, 2002-2011



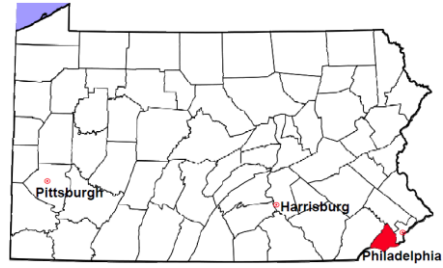
Note: Clearance Rate = Cases Processed / New Cases Filed

Cases Pending at the End of Year, 2002-2011



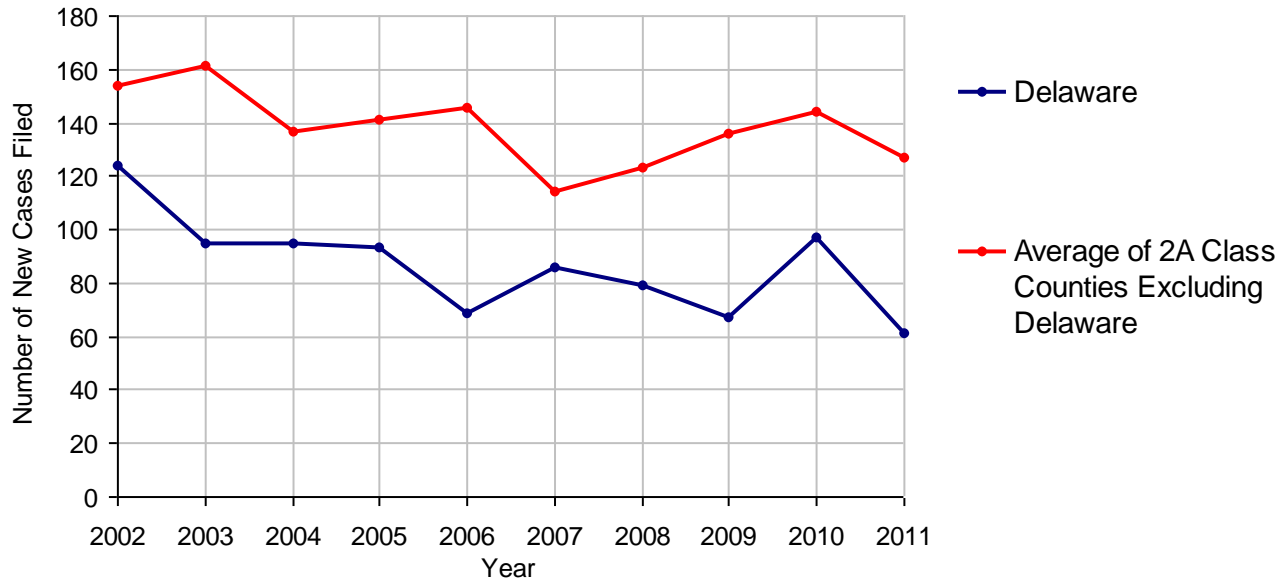
# Delaware County

2011 Population Estimate: 559,494  
 Class of County: 2A  
 No. of Common Pleas Court Judgeships: 20



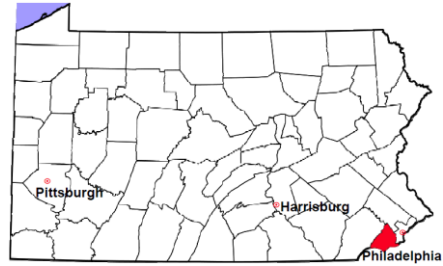
<b>2011 Accounts</b>	<b>No. of Cases</b>
Cases Pending 1/1/2011	196
New Cases Filed in 2011	61
<b>Cases Available for Processing</b>	<b>257</b>
Processed By:	
Contested before a Judge	5      8.1%
Contested before a Non-judicial Officer	0
Uncontested	51      82.3%
Other	6      9.7%
<b>Cases Processed</b>	<b>62      100.0%</b>
<b>Cases Pending 12/31/2011</b>	<b>195</b>

**Accounts New Cases Filed, 2002-2011**



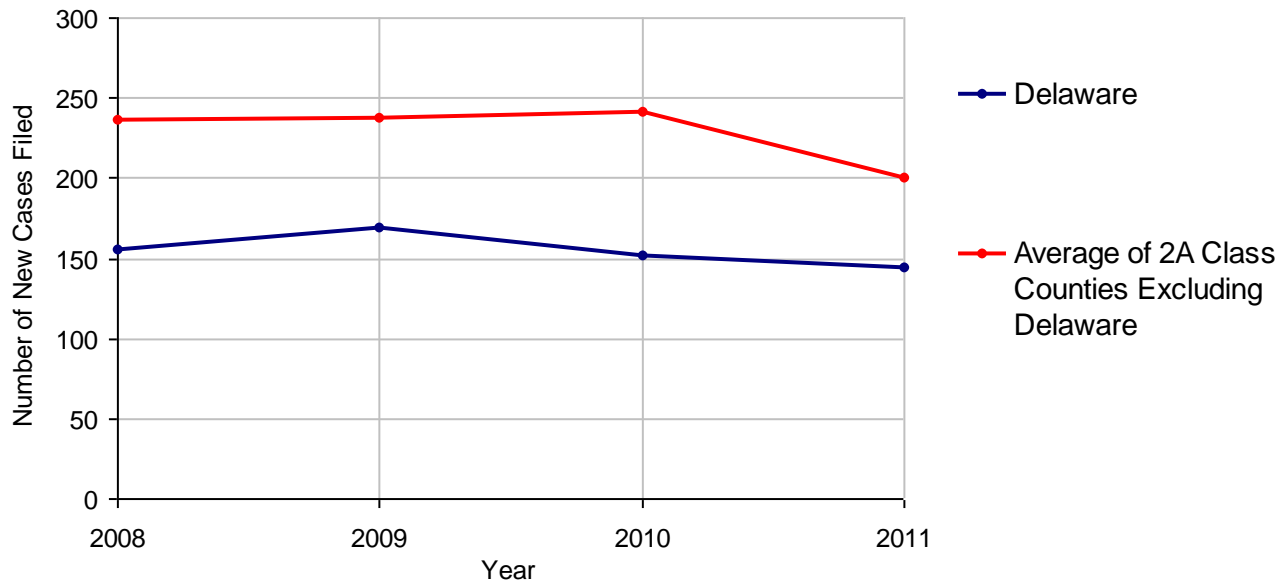
# Delaware County

2011 Population Estimate: 559,494  
 Class of County: 2A  
 No. of Common Pleas Court Judgeships: 20



<b>2011 Adoptions</b>		<b>No. of Cases</b>	
Cases Pending 1/1/2011		60	
New Cases Filed in 2011		144	
<b>Cases Available for Processing</b>		<b>204</b>	
Processed By:			
Contested before a Judge	Granted	0	
	Denied	0	
Uncontested	Granted	149	99.3%
	Denied	0	
Other		1	0.7%
<b>Cases Processed</b>		<b>150</b>	<b>100.0%</b>
<b>Cases Pending 12/31/2011</b>		<b>54</b>	

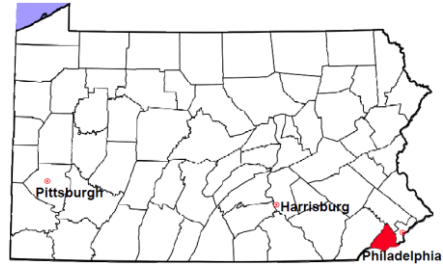
**Adoptions New Cases Filed, 2008-2011**



Note: Prior to 2008, each petition was counted as one new case, regardless of the number of children listed on the petition. Starting in 2008, each child listed on a petition is counted as a separate case. Therefore, statistics for the years since 2008 should not be compared to those for the years prior to 2008.

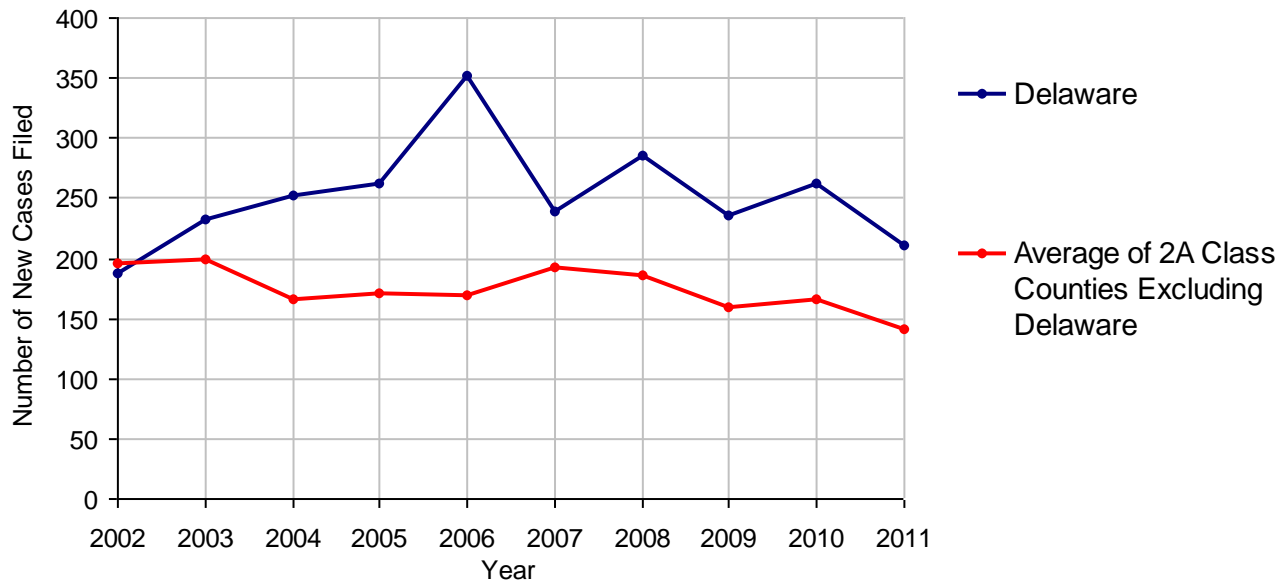
# Delaware County

2011 Population Estimate: 559,494  
 Class of County: 2A  
 No. of Common Pleas Court Judgeships: 20



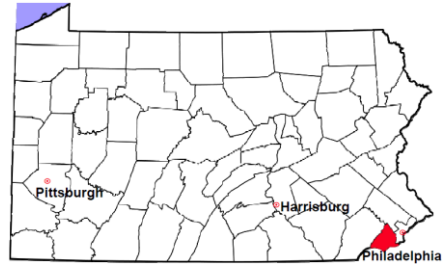
<b>2011 Relinquishments/Terminations</b>	<b>No. of Cases</b>	
Cases Pending 1/1/2011	304	
New Cases Filed in 2011	211	
<b>Cases Available for Processing</b>	<b>515</b>	
Processed By:		
Contested before a Judge	48	25.8%
Uncontested	126	67.7%
Other	12	6.5%
<b>Cases Processed</b>	<b>186</b>	<b>100.0%</b>
<b>Cases Pending 12/31/2011</b>	<b>329</b>	

**Relinquishments/Terminations New Cases Filed, 2002-2011**



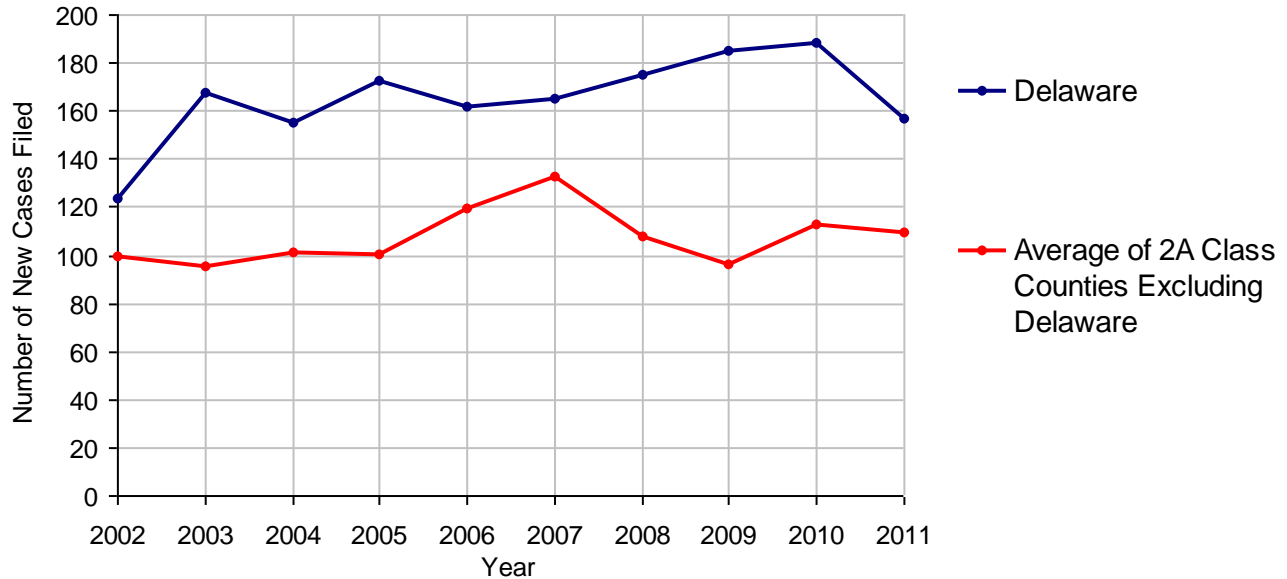
# Delaware County

2011 Population Estimate: 559,494  
 Class of County: 2A  
 No. of Common Pleas Court Judgeships: 20



<b>2011 Appointment of Guardians</b>	<b>No. of Cases</b>
Cases Pending 1/1/2011	109
New Cases Filed in 2011	157
<b>Cases Available for Processing</b>	<b>266</b>
Processed By:	
Contested before a Judge	13      7.8%
Uncontested	135      81.3%
Other	18      10.8%
<b>Cases Processed</b>	<b>166      100.0%</b>
<b>Cases Pending 12/31/2011</b>	<b>100</b>

**Appointment of Guardians New Cases Filed, 2002-2011**

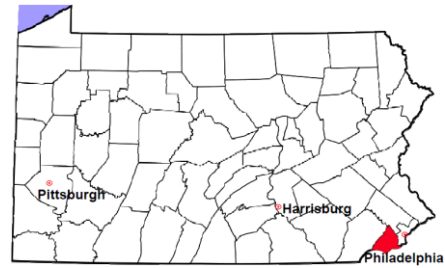


# Delaware County

2011 Population Estimate: 559,494

Class of County: 2A

No. of Common Pleas Court Judgeships: 20



---

## 2011 Jury Activity and Performance Measures

---

A. Juror Days	14,296
B. Number Sent to Voir Dire	8,309
Voir Dire Attendance Rate (B/A * 100)	58.1%
C. Number of Jurors Selected	1,843
Juror Selection Rate (C/B * 100)	22.2%

---

Note: In mid-2011, AOPC began utilizing the National Center for State Courts' Jury Managers' Toolbox for collecting jury data. This has resulted in limited jury performance measures being reported for 2011. Additional data will be available in 2012.