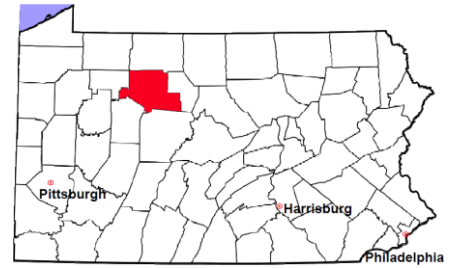


Elk County

2011 Population Estimate: 31,751

Class of County: 6th

No. of Common Pleas Court Judgeships: 1
(Elk and Cameron combined)



2011 Criminal No. of Cases

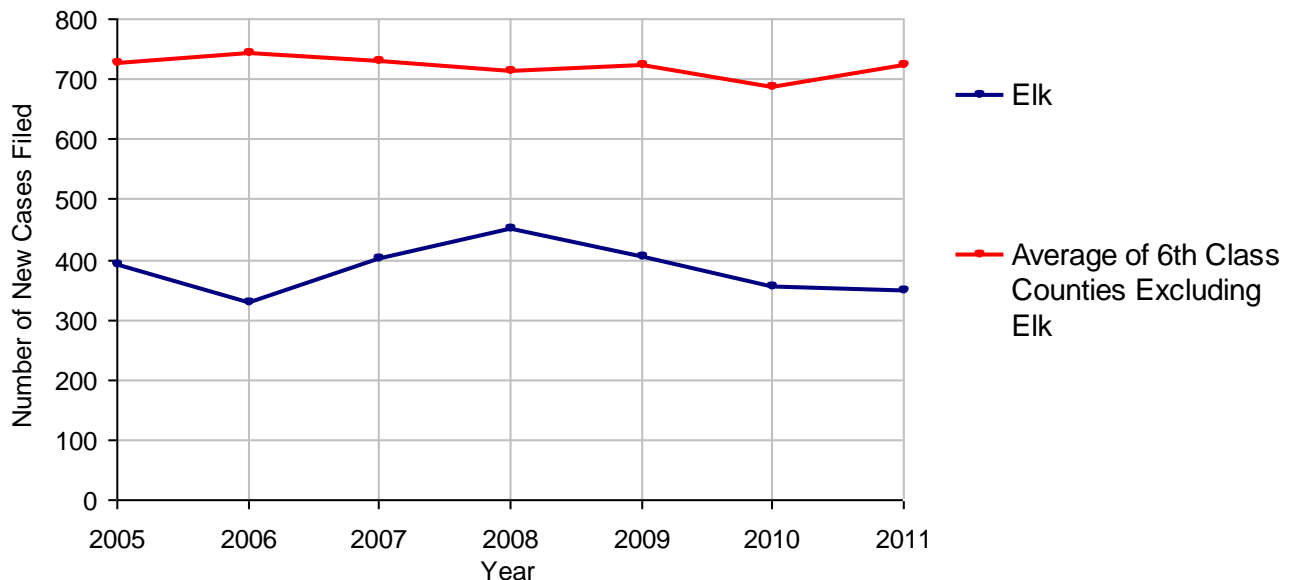
Cases Pending 1/1/2011	162	
New Cases Filed in 2011	351	
Reopened Cases	4	
Cases Available for Disposition	517	
Disposed by:		
Withdrawn/Dismissed	20	5.4%
ARD	77	20.8%
Guilty Plea	264	71.4%
Non-Jury Trial	1	0.3%
Jury Trial	3	0.8%
Inactive	3	0.8%
Other	2	0.5%
Total Cases Disposed	370	100.0%
Cases Pending 12/31/2011	147	
Cases Awaiting Sentencing	5	



Age of Pending Cases as of 12/31/2011		
0-60 Days	61	41.5%
61-120 Days	35	23.8%
121-180 Days	19	12.9%
181-240 Days	14	9.5%
241-300 Days	6	4.1%
301-360 Days	2	1.4%
Over 360 Days	10	6.8%
Total	147	100.0%

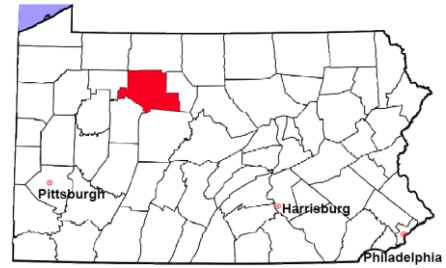
Data provided by CPCMS

Criminal New Cases Filed, 2005-2011



Elk County

2011 Population Estimate: 31,751
Class of County: 6th
No. of Common Pleas Court Judgeships: 1
(Elk and Cameron combined)



2011 Criminal - New Cases by Case Type

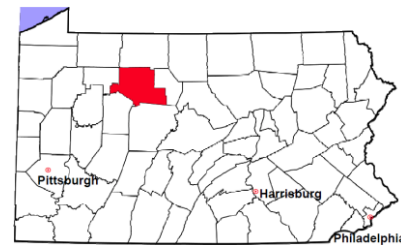


Case Type	Felony	Misdemeanor	Summary /Ungraded	Total
Person	18	21	1	40
Property	64	54	1	119
Drug	12	37	0	49
Weapon	2	2	0	4
Public Order	4	29	0	33
Motor Vehicle - DWI/DUI	0	104	0	104
Motor Vehicle - Other	0	2	0	2
Other	0	0	0	0
Total	100	249	2	351
	28.5%	70.9%	0.6%	100.0%

Data provided by CPCMS

Elk County

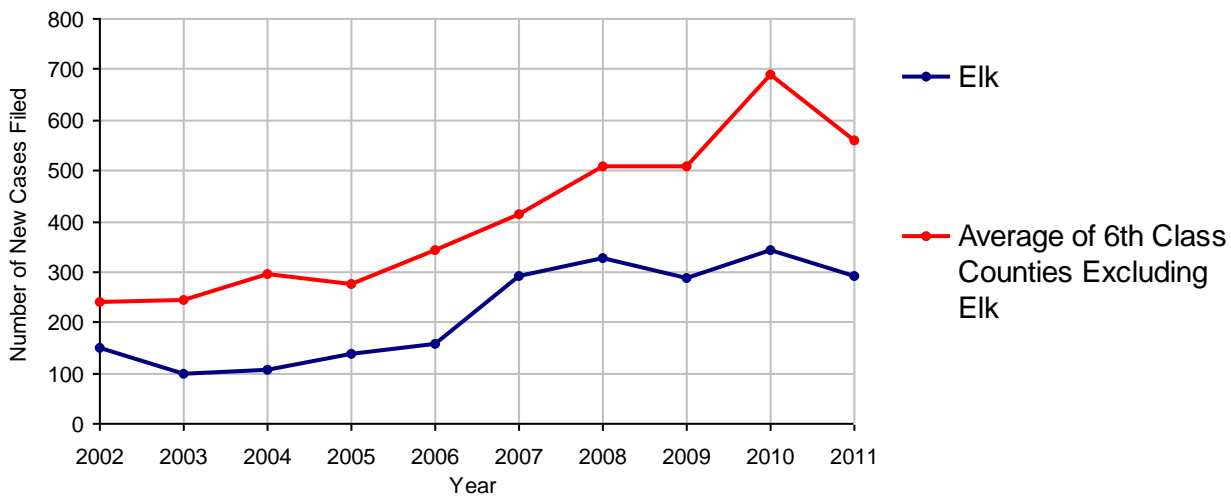
2011 Population Estimate: 31,751
 Class of County: 6th
 No. of Common Pleas Court Judgeships: 1
 (Elk and Cameron combined)



2011 Civil	Civil Action	Other	Total
Cases Pending 1/1/2011	212	131	343
Docketed Cases	158	135	293
Arbitration Appeals	0	0	0
Transferred In	0	0	0
Returned to Active	0	0	0
Cases Available for Processing	370	266	636
Disposed By:			
Default Judgments	68	31	99
Cases Decided by Arbitration Board	13	2	15
Dispositive Motions	4	2	6
Settlements	19	15	34
Moved to Inactive Status	0	0	0
Transferred/Withdrawn	1	3	4
Pa.R.J.A. 1901 Administrative Purge	23	15	38
Other	46	22	68
Jury Trial	0	0	0
Non-Jury Trial	0	2	2
Total Cases Disposed	174	92	266
Cases Pending 12/31/2011	196	174	370

Age of Pending Cases as of 12/31/2011 (Civil Action Only)		
0-6 months	52	26.5%
7-12 months	42	21.4%
13-18 months	30	15.3%
19-24 months	20	10.2%
25-30 months	19	9.7%
31-36 months	5	2.6%
37-42 months	10	5.1%
43-48 months	8	4.1%
49-54 months	3	1.5%
55-60 months	2	1.0%
61-66 months	2	1.0%
67-72 months	2	1.0%
Over 72 months	1	0.5%
Total	196	100.0%

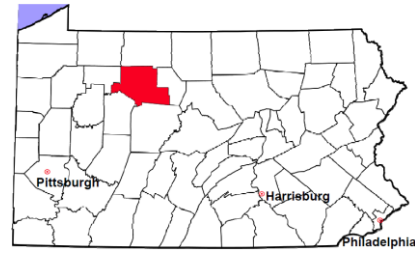
Docketed Cases, 2002-2011



Note: Prior to June 2010, docketed cases under the "Other" category were not reported. The reporting of these cases starting from June 2010 may contribute to an increase in docketed cases from 2009 to 2010.

Elk County

2011 Population Estimate: 31,751
 Class of County: 6th
 No. of Common Pleas Court Judgeships: 1
 (Elk and Cameron combined)



2011 Civil - Docketed Cases Listed by Case Type

TORT (does not include mass tort)

Intentional	0
Malicious Prosecution	0
Motor Vehicle	9
Nuisance	0
Premise Liability	1
Product Liability	3
Slander/Libel/Defamation	0
Other	6

MASS TORT

Asbestos	0
Tobacco	0
Toxic Tort - DES	0
Toxic Tort - Implant	0
Toxic Waste	0
Other	0

PROFESSIONAL LIABILITY

Dental	0
Legal	0
Medical Malpractice	2
Other	0

CONTRACT

(does not include judgments)

Buyer Plaintiff	1
Debt Collection:	
Credit Card	97
Other	31
Employment Dispute:	
Discrimination	0
Other	2
Other	6

REAL PROPERTY

Ejectment*	7
Eminent Domain/ Condemnation*	2
Ground Rent	0
Landlord/Tenant Dispute	0
Mortgage Forclosures:	
Residential*	39
Commercial*	10
Partition of Real Property*	5
Quiet Title*	10
Other*	5

CIVIL APPEALS

Administrative Agencies

Board of Assessment*	15
Board of Elections*	0
Dept. of Transportation*	8
Zoning Board*	0
Statutory Appeal - Other*	0
Other*	4

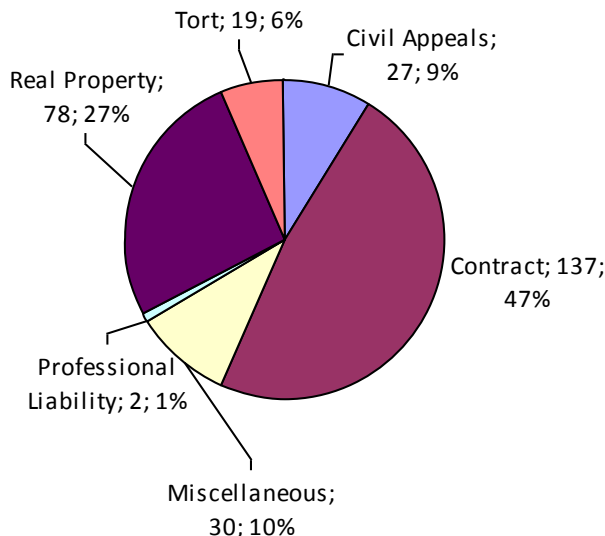
MISCELLANEOUS

Common Law/ Statutory Arbitration*	0
Declaratory Judgment*	4
Mandamus*	0
Non-Domestic Relations Restraining Order*	0
Quo Warranto*	0
Replevin*	1
Other*	25

TOTAL DOCKETED CASES:

293

* Civil Other



Of the Docketed Cases:

Pro Se Filings:	0	
Class Action Suits:	1	0.3%
MDJ Appeals:	5	1.7%

Elk County

2011 Population Estimate: 31,751
 Class of County: 6th
 No. of Common Pleas Court Judgeships: 1
 (Elk and Cameron combined)

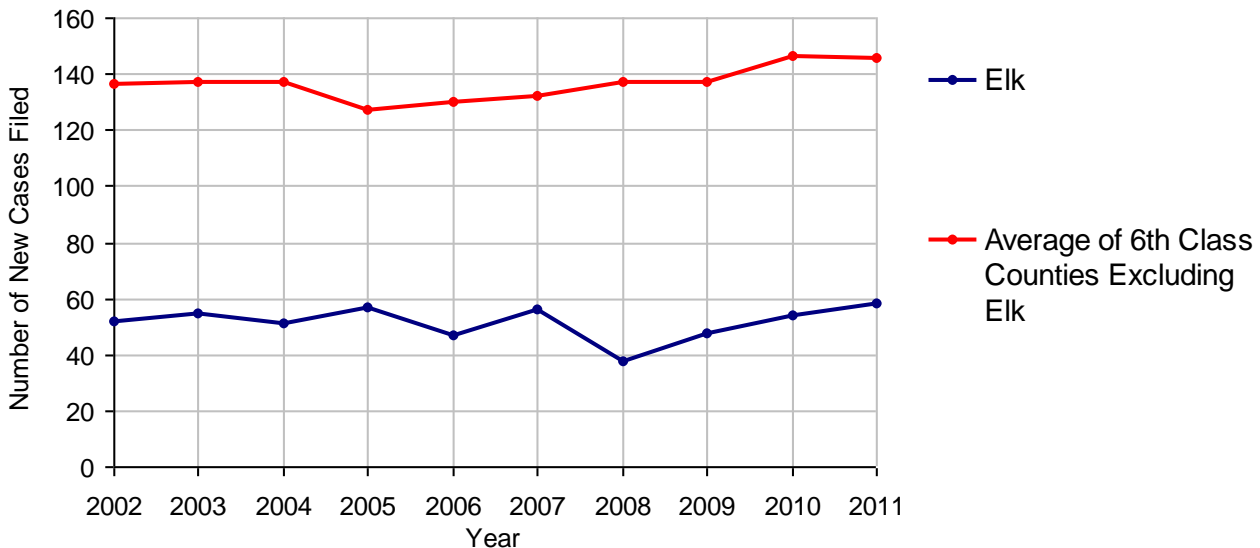


2011 Protection From Abuse

**No. of
Petitions**

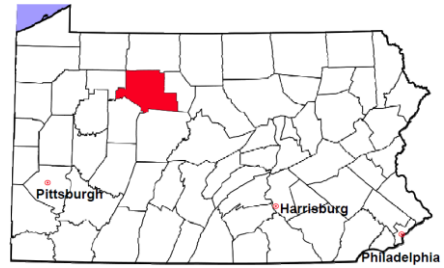
Cases Pending 1/1/2011	5
New Cases Filed in 2011	58
<i>Of these, Petitions Requesting Temporary Orders: 58 (100.0%)</i>	
<i>Temporary Orders DENIED: 15 (25.9%), Temporary Orders GRANTED: 43 (74.1%)</i>	
Cases Available for Processing	63
Processed By:	
Temporary Order DENIED After Ex Parte Hearing and No Evidentiary Hearing Scheduled	15 25.4%
Temporary Order DISMISSED After Evidentiary Hearing and No Final Order Entered	0
Final Order DENIED After Evidentiary Hearing Before a Judge	9 15.3%
Final Order GRANTED After Evidentiary Hearing Before a Judge	12 20.3%
Plaintiff Did Not Appear For Evidentiary Hearing	2 3.4%
Final Order by STIPULATION OR AGREEMENT Between the Parties	8 13.6%
Petition WITHDRAWN by Plaintiff	13 22.0%
TRANSFERRED to Another Jurisdiction	0
DECEASED Party	0
Other	0
Cases Processed	59 100.0%
Cases Pending 12/31/2011	4

PFA New Cases Filed, 2002-2011

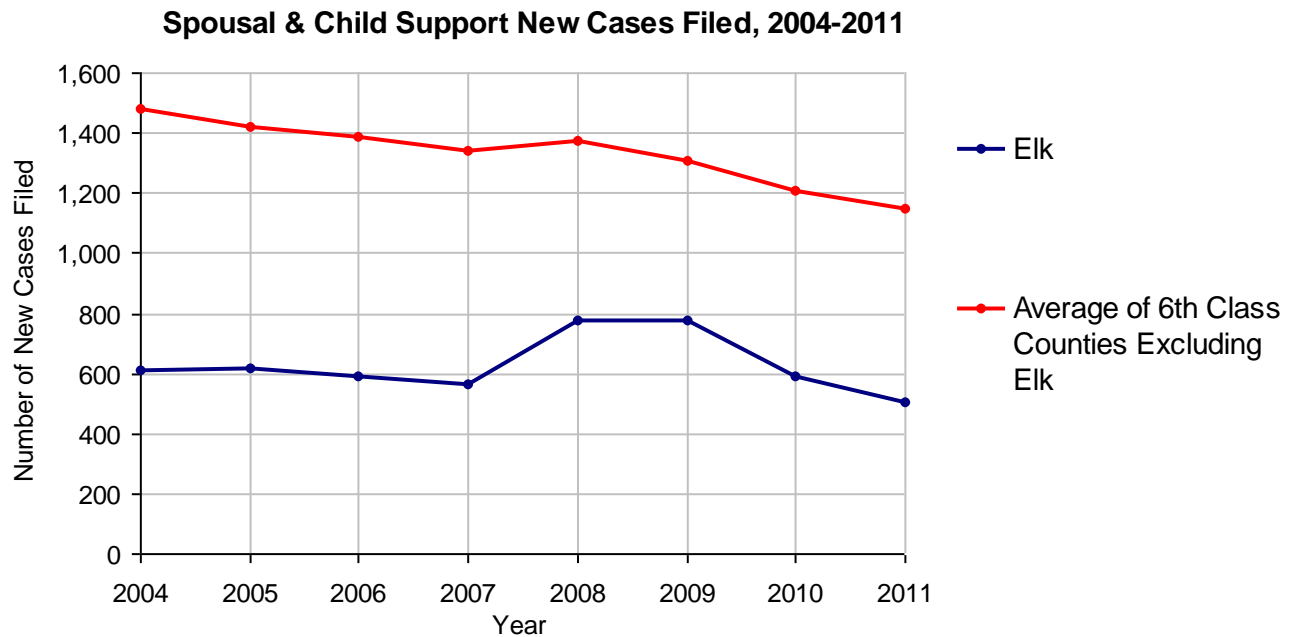


Elk County

2011 Population Estimate: 31,751
 Class of County: 6th
 No. of Common Pleas Court Judgeships: 1
 (Elk and Cameron combined)



2011 Spousal & Child Support	No. of Petitions	
Cases Pending 1/1/2011	43	
New Cases Filed in 2011	504	
Dockets Transferred In (+)	3	
Dockets Transferred Out (-)	4	
Cases Available for Processing	546	
Processed By:		
Judge	4	0.8%
Intake Officer	458	91.1%
Hearing Officer	41	8.2%
Other	0	
Cases Processed	503	100.0%
Cases Pending 12/31/2011	43	

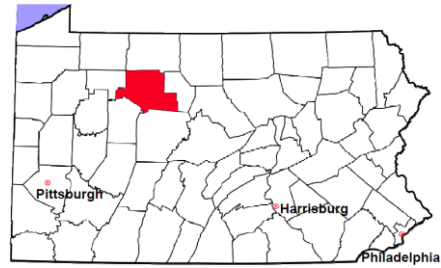


Elk County

2011 Population Estimate: 31,751

Class of County: 6th

No. of Common Pleas Court Judgeships: 1
(Elk and Cameron combined)



2011 Custody/Partial Custody/Visitation

No. of
Petitions

Cases Pending 1/1/2011 28

New Cases Filed in 2011 98

Cases Available for Processing 126

Processed By:

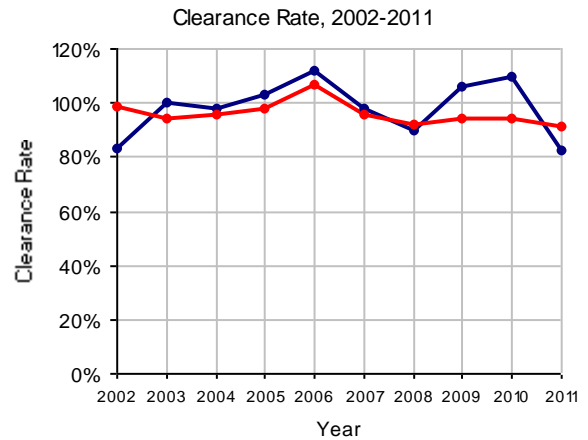
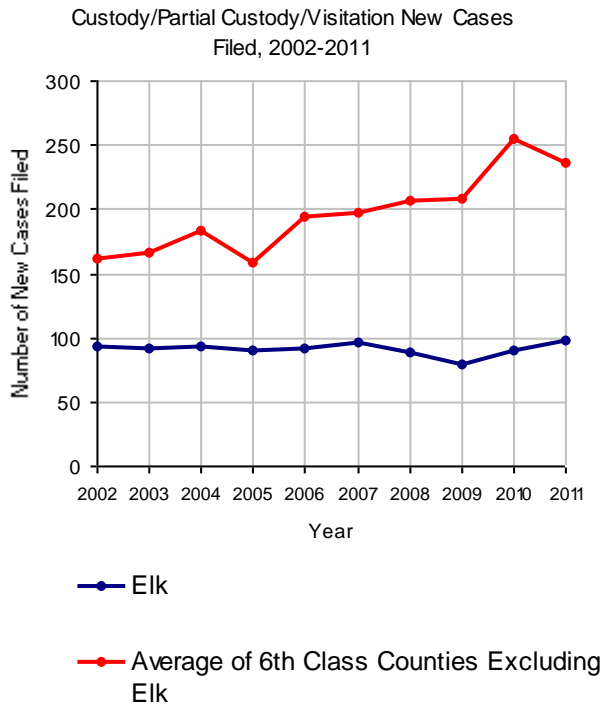
Judge 13 16.0%

Non-Judicial Officer 51 63.0%

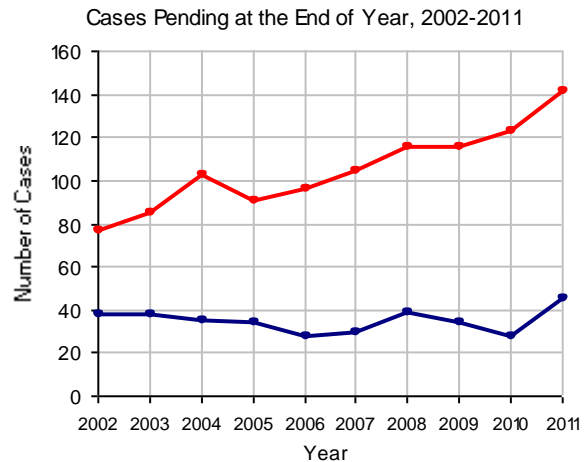
Other 17 21.0%

Cases Processed 81 100.0%

Cases Pending 12/31/2011 45

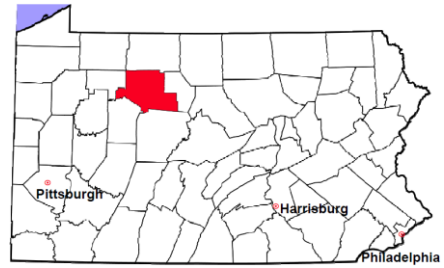


Note: Clearance Rate = Cases Processed / New Cases Filed



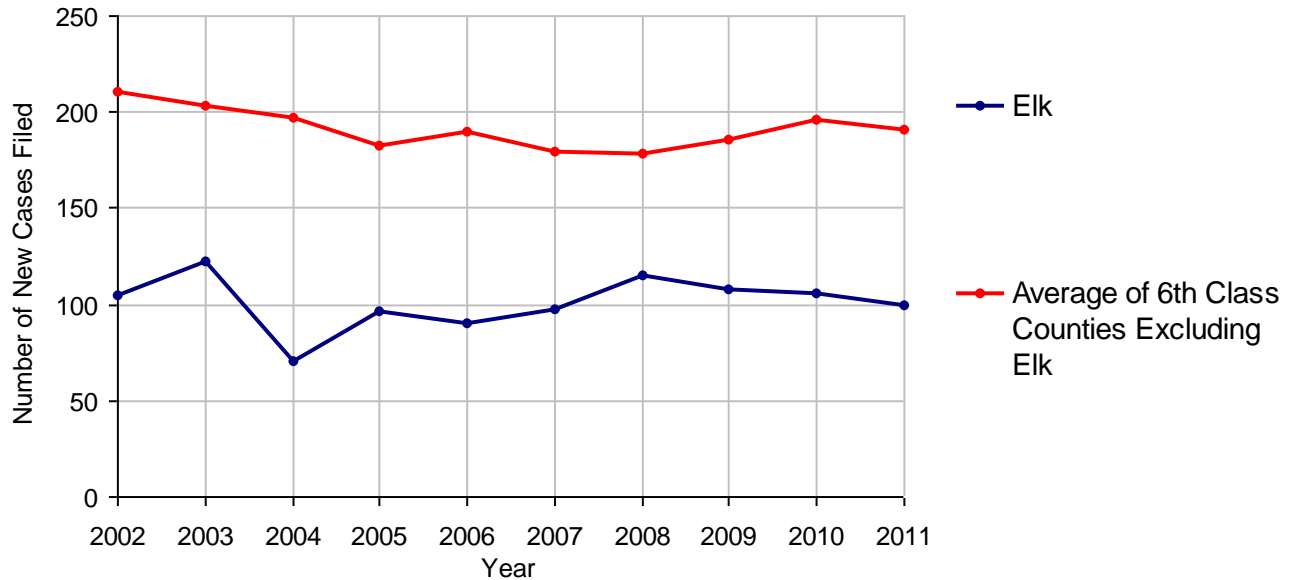
Elk County

2011 Population Estimate: 31,751
 Class of County: 6th
 No. of Common Pleas Court Judgeships: 1
 (Elk and Cameron combined)



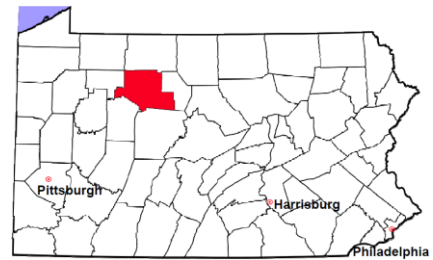
2011 Divorce	No. of Petitions	
Cases Pending 1/1/2011	167	
New Cases Filed in 2011	100	
Cases Available for Processing	267	
Processed By:		
Contested Before a Judge	0	
Contested Before a Master	0	
Uncontested	75	82.4%
Other	16	17.6%
Cases Processed	91	100.0%
Cases Pending 12/31/2011	176	

Divorce New Cases Filed, 2002-2011



Elk County

2011 Population Estimate: 31,751
 Class of County: 6th
 No. of Common Pleas Court Judgeships: 1
 (Elk and Cameron combined)



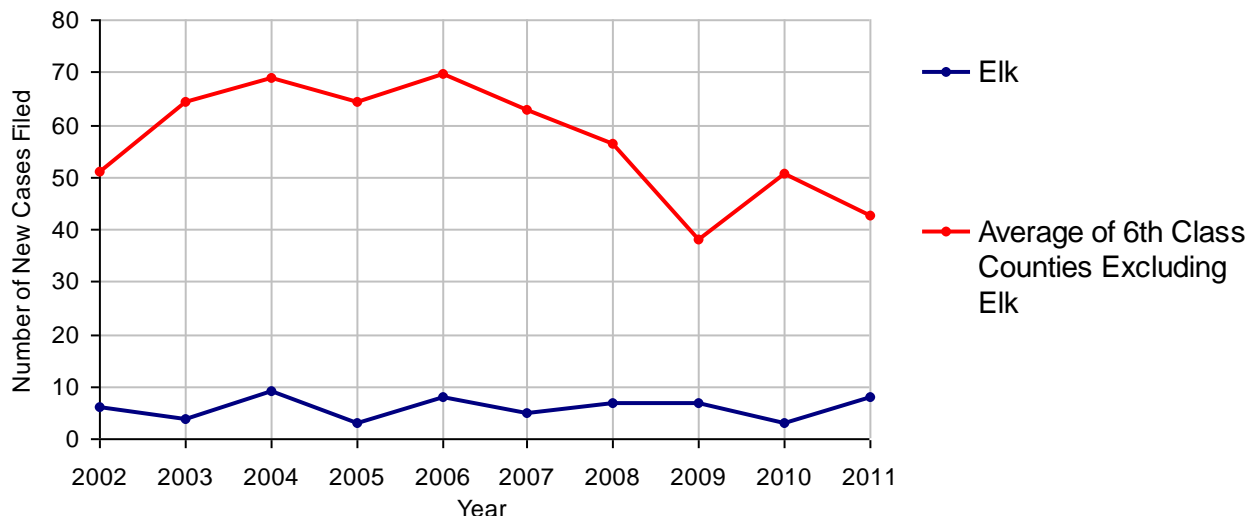
2011 Juvenile Dependency - Active Dependent Inventory



	Abuse/ Neglect	Status Offenses	Total
Cases Pending 1/1/2011	0	0	0
New Petitions Filed in 2011	5	3	8
Other	0	1	1
Total Petitions Available for Processing	5	4	9
Processed by:			
Adjudicated Dependent			
Judge	2	3	5
Master	0	0	0
Adjudicated NOT Dependent			
Judge	1	0	1
Master	0	0	0
Withdrawn/Dismissed/Inactive	0	0	0
Other	1	0	1
Total Petitions Processed	4	3	7
Cases Pending 12/31/2011	1	1	2

Data provided by CPCMS

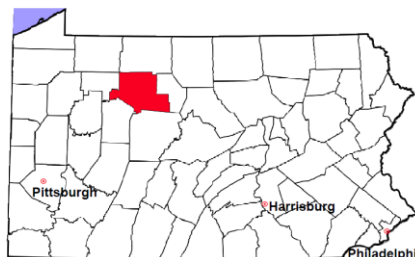
Abuse/Neglect and Status Offenses New Cases Filed, 2002-2011



Note: Dependency data for 2002-2010 were collected manually. Dependency data for 2011 were provided by CPCMS.

Elk County

2011 Population Estimate: 31,751
 Class of County: 6th
 No. of Common Pleas Court Judgeships: 1
 (Elk and Cameron combined)



2011 Juvenile Dependency - Adjudicated Dependent Inventory

	Abuse/ Neglect	Status Offenses	Total	
Cases Pending 1/1/2011	2	3	5	
New Adjudicated Dependent Cases	2	3	5	
Other	0	0	0	
Total Adjudicated Dependent Cases	4	6	10	
<u>Court Supervision Terminated:</u>				
Family Reunification	0	0	0	
Adoption	0	0	0	
Placement with a Relative/Guardian	0	0	0	
Aged Out	0	0	0	
Other Permanency Outcomes*	0	0	0	
Other**	0	1	1	100.0%
Total Adjudicated Dependent Cases Terminated	0	1	1	100.0%
Cases Pending 12/31/2011	4	5	9	

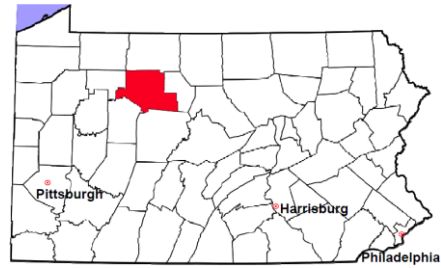
Data provided by CPCMS

* Other Permanency Outcomes include: adjudicated delinquent, death due to natural causes, emancipation, permanent living arrangement, and parent has come forward.

** Other includes cases where Court Supervision is terminated due to transfer out of jurisdiction, withdrawal and administrative closures.

Elk County

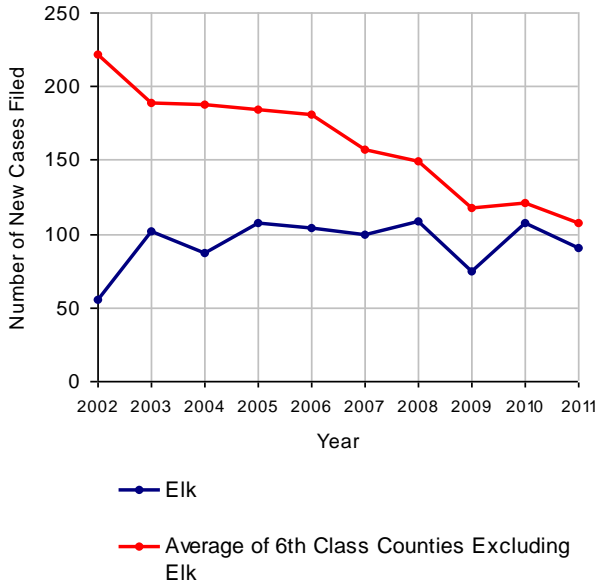
2011 Population Estimate: 31,751
 Class of County: 6th
 No. of Common Pleas Court Judgeships: 1
 (Elk and Cameron combined)



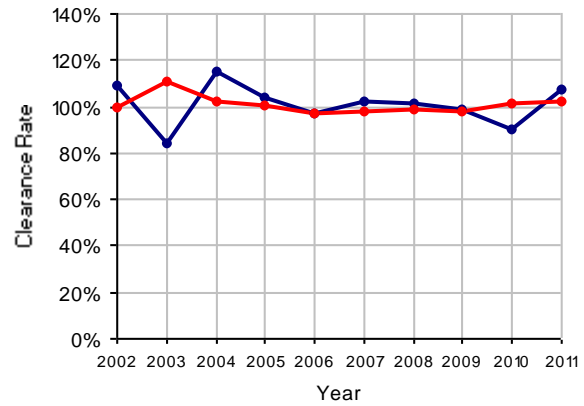
2011 Juvenile Delinquency

	No. of Cases
Cases Pending 1/1/2011	22
New Cases Filed in 2011	90
Cases Available for Processing	112
Processed By:	
Judge	14 14.4%
Non-Judicial Officer	68 70.1%
Other	15 15.5%
Cases Processed	97 100.0%
Cases Pending 12/31/2011	15

Juvenile Delinquency New Cases Filed, 2002-2011

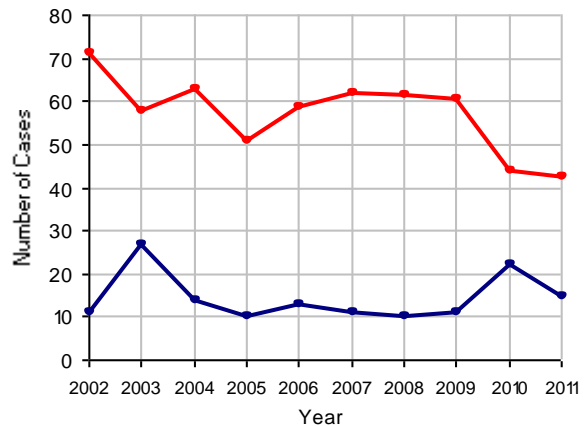


Clearance Rate, 2002-2011



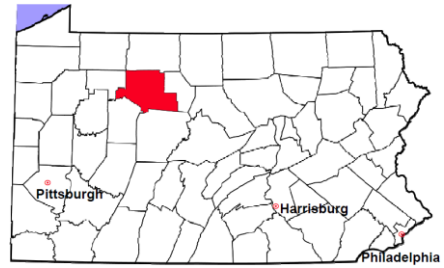
Note: Clearance Rate = Cases Processed / New Cases Filed

Cases Pending at the End of Year, 2002-2011



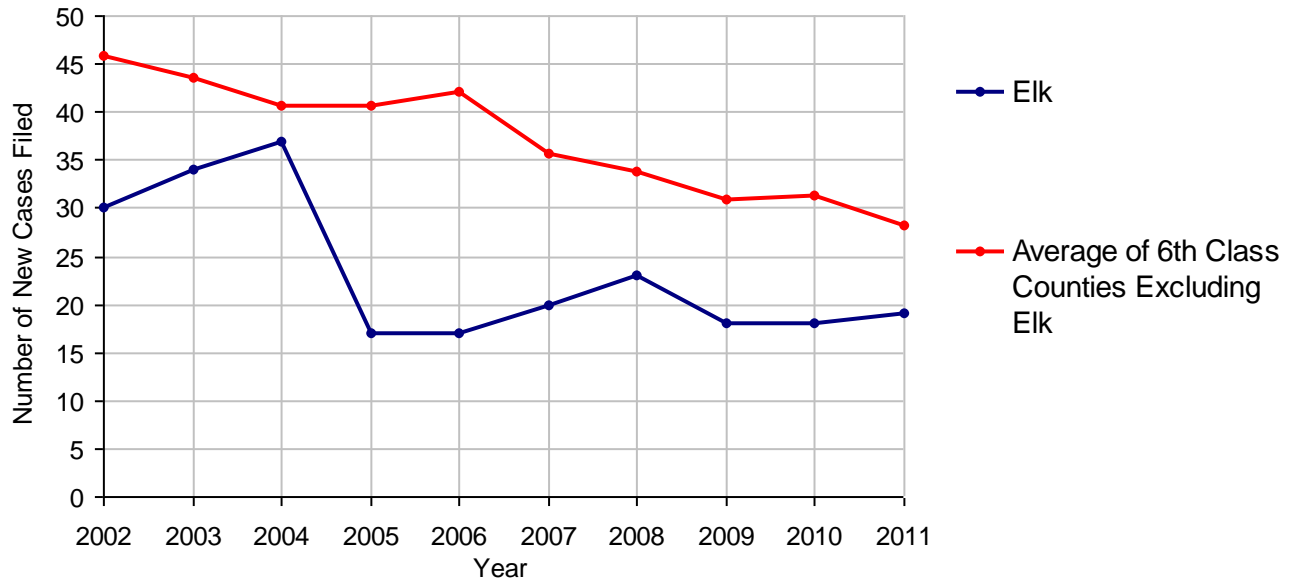
Elk County

2011 Population Estimate: 31,751
 Class of County: 6th
 No. of Common Pleas Court Judgeships: 1
 (Elk and Cameron combined)



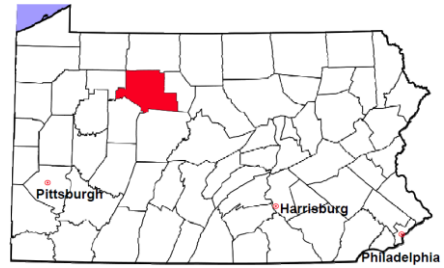
2011 Accounts	No. of Cases	
Cases Pending 1/1/2011	7	
New Cases Filed in 2011	19	
Cases Available for Processing	26	
Processed By:		
Contested before a Judge	0	
Contested before a Non-judicial Officer	0	
Uncontested	17	100.0%
Other	0	
Cases Processed	17	100.0%
Cases Pending 12/31/2011	9	

Accounts New Cases Filed, 2002-2011



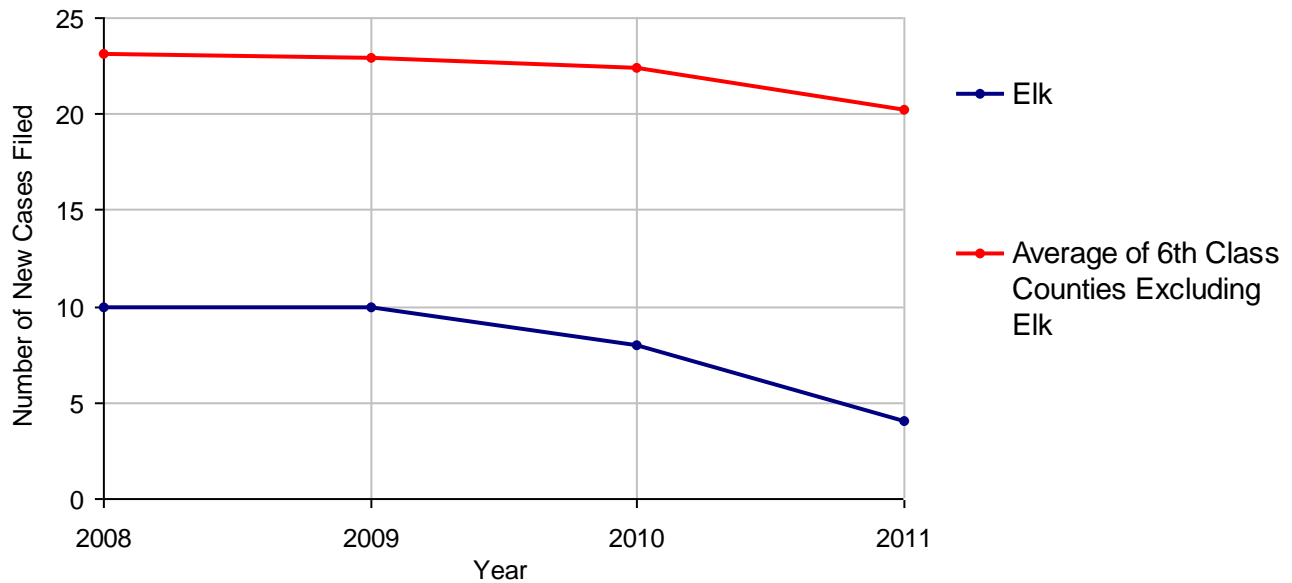
Elk County

2011 Population Estimate: 31,751
 Class of County: 6th
 No. of Common Pleas Court Judgeships: 1
 (Elk and Cameron combined)



2011 Adoptions		No. of Cases	
Cases Pending 1/1/2011		2	
New Cases Filed in 2011		4	
Cases Available for Processing		6	
Processed By:			
Contested before a Judge	Granted	0	
	Denied	0	
Uncontested	Granted	3	100.0%
	Denied	0	
Other		0	
Cases Processed		3	100.0%
Cases Pending 12/31/2011		3	

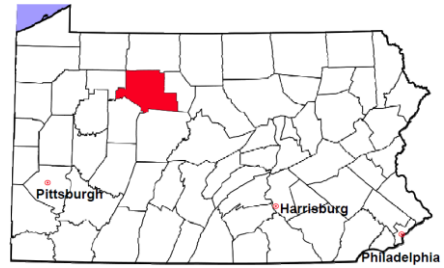
Adoptions New Cases Filed, 2008-2011



Note: Prior to 2008, each petition was counted as one new case, regardless of the number of children listed on the petition. Starting in 2008, each child listed on a petition is counted as a separate case. Therefore, statistics for the years since 2008 should not be compared to those for the years prior to 2008.

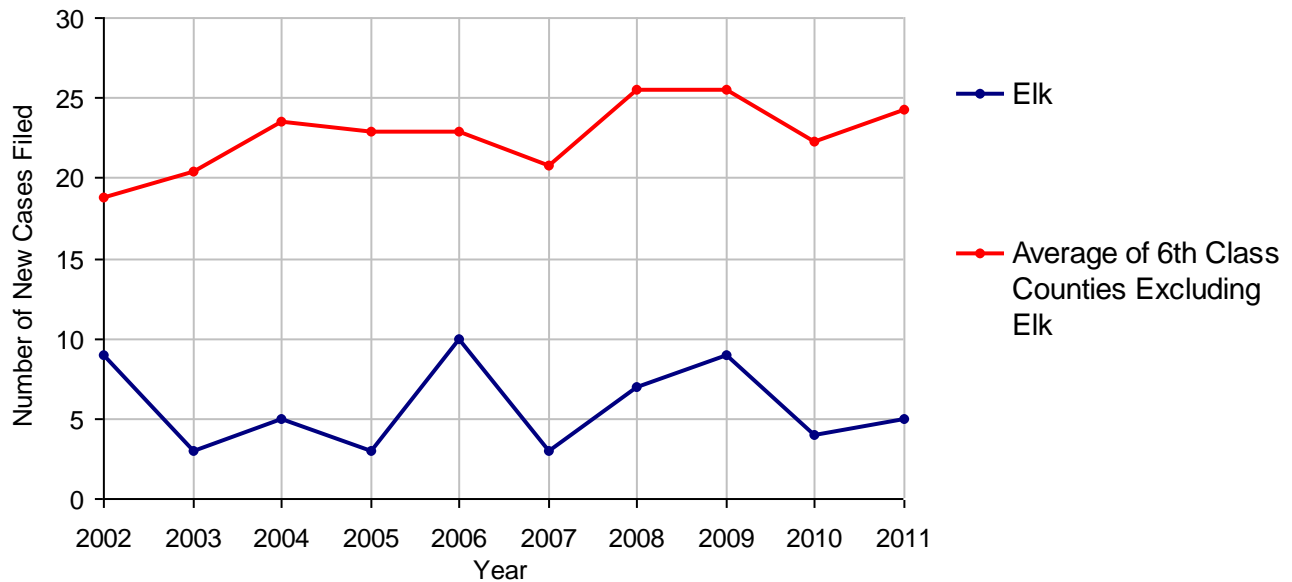
Elk County

2011 Population Estimate: 31,751
 Class of County: 6th
 No. of Common Pleas Court Judgeships: 1
 (Elk and Cameron combined)



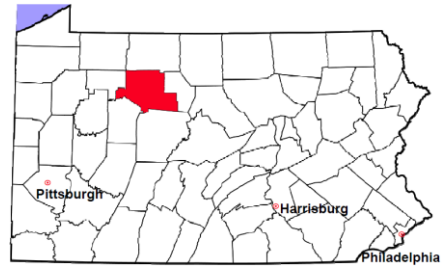
2011 Relinquishments/Terminations	No. of Cases
Cases Pending 1/1/2011	3
New Cases Filed in 2011	5
Cases Available for Processing	8
Processed By:	
Contested before a Judge	0
Uncontested	3 100.0%
Other	0
Cases Processed	3 100.0%
Cases Pending 12/31/2011	5

Relinquishments/Terminations New Cases Filed, 2002-2011



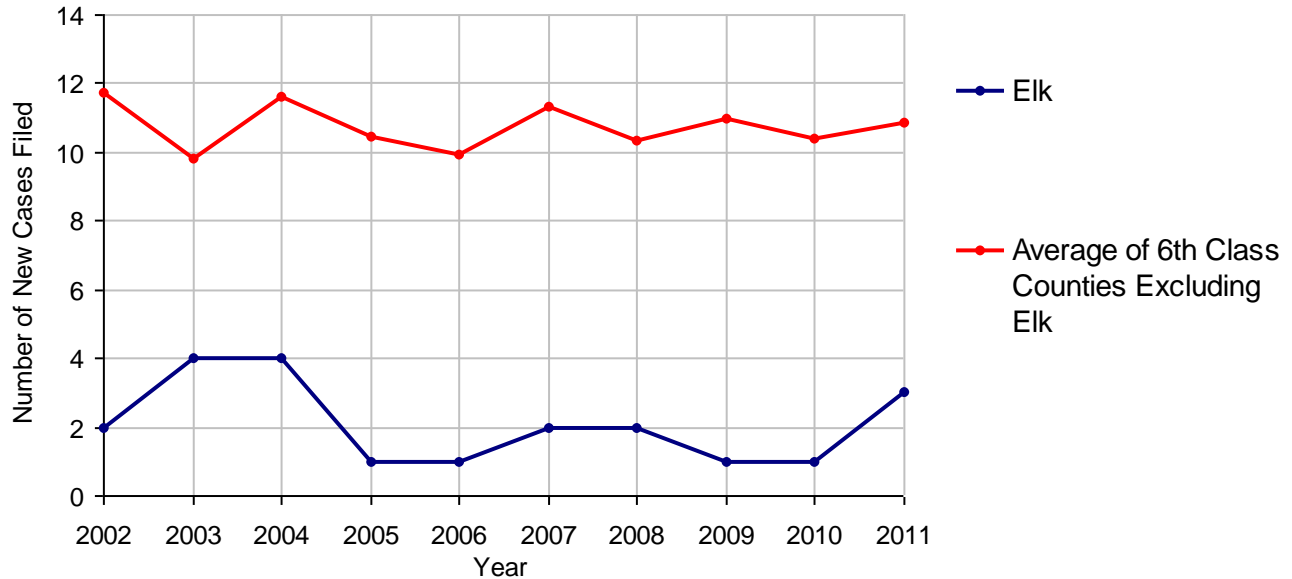
Elk County

2011 Population Estimate: 31,751
 Class of County: 6th
 No. of Common Pleas Court Judgeships: 1
 (Elk and Cameron combined)



2011 Appointment of Guardians		No. of Cases
Cases Pending 1/1/2011		0
New Cases Filed in 2011		3
Cases Available for Processing		3
Processed By:		
Contested before a Judge		0
Uncontested		2 100.0%
Other		0
Cases Processed		2 100.0%
Cases Pending 12/31/2011		1

Appointment of Guardians New Cases Filed, 2002-2011

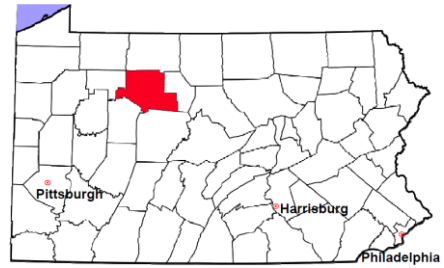


Elk County

2011 Population Estimate: 31,751

Class of County: 6th

No. of Common Pleas Court Judgeships: 1
(Elk and Cameron combined)



2011 Jury Activity and Performance Measures

A. Juror Days	340
B. Number Sent to Voir Dire	354
Voir Dire Attendance Rate (B/A * 100)	104.1%
C. Number of Jurors Selected	87
Juror Selection Rate (C/B * 100)	24.6%

Note: In mid-2011, AOPC began utilizing the National Center for State Courts' Jury Managers' Toolbox for collecting jury data. This has resulted in limited jury performance measures being reported for 2011. Additional data will be available in 2012.