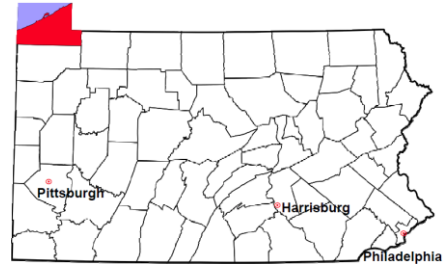


Erie County

2011 Population Estimate: 280,985
 Class of County: 3rd
 No. of Common Pleas Court Judgeships: 9



2011 Criminal	No. of Cases
---------------	--------------

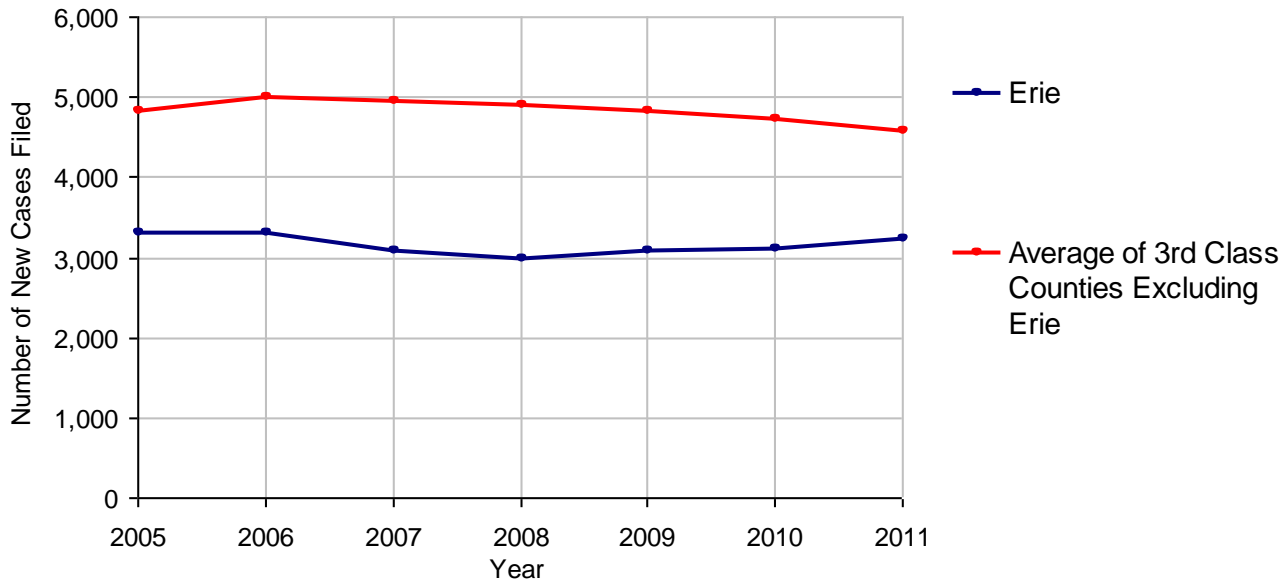
Cases Pending 1/1/2011	1,364
New Cases Filed in 2011	3,243
Reopened Cases	143
Cases Available for Disposition	4,750
Disposed by:	
Withdrawn/Dismissed	246 9.2%
ARD	0
Guilty Plea	2,015 75.4%
Non-Jury Trial	25 0.9%
Jury Trial	100 3.7%
Inactive	110 4.1%
Other	175 6.6%
Total Cases Disposed	2,671 100.0%
Cases Pending 12/31/2011	2,079
Cases Awaiting Sentencing	122



Age of Pending Cases as of 12/31/2011

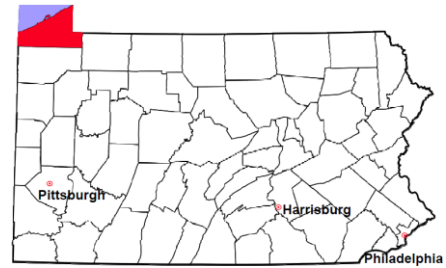
0-60 Days	658	31.6%
61-120 Days	711	34.2%
121-180 Days	396	19.0%
181-240 Days	152	7.3%
241-300 Days	73	3.5%
301-360 Days	22	1.1%
Over 360 Days	67	3.2%
Total	2,079	100.0%

Criminal New Cases Filed, 2005-2011



Erie County

2011 Population Estimate: 280,985
Class of County: 3rd
No. of Common Pleas Court Judgeships: 9



2011 Criminal - New Cases by Case Type

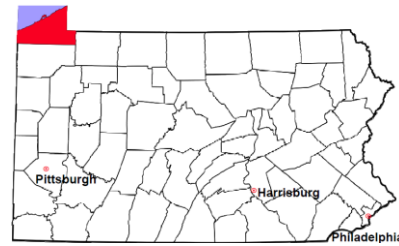


Case Type	Felony	Misdemeanor	Summary /Ungraded	Total
Person	308	239	3	550
Property	477	522	28	1,027
Drug	145	232	0	377
Weapon	49	13	0	62
Public Order	76	261	3	340
Motor Vehicle - DWI/DUI	0	880	0	880
Motor Vehicle - Other	2	5	0	7
Other	0	0	0	0
Total	1,057	2,152	34	3,243
	32.6%	66.4%	1.0%	100.0%

Data provided by CPCMS

Erie County

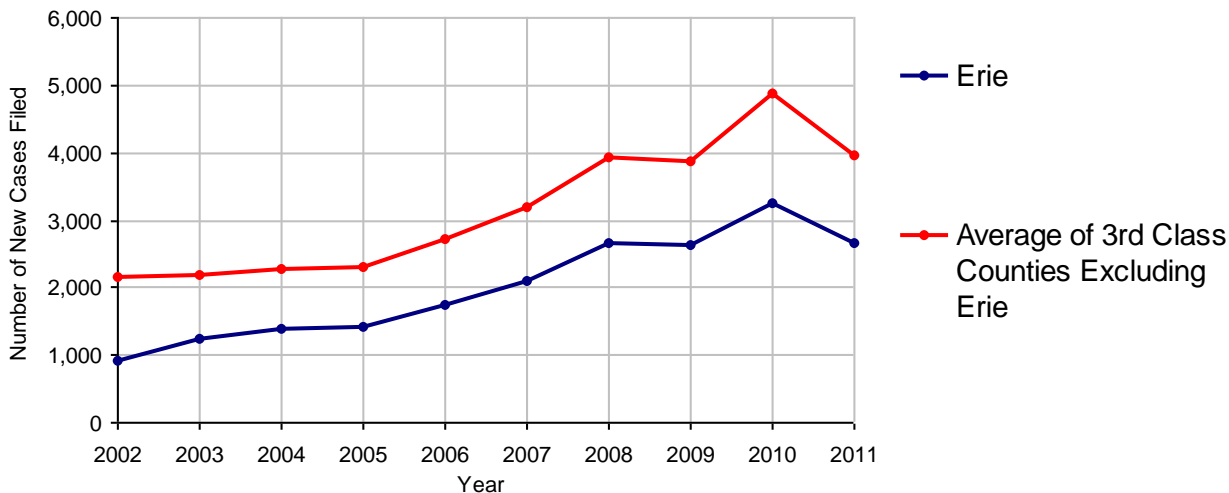
2011 Population Estimate: 280,985
 Class of County: 3rd
 No. of Common Pleas Court Judgeships: 9



2011 Civil	Civil Action	Other	Total
Cases Pending 1/1/2011	1,135	1,807	2,942
Docketed Cases	1,937	735	2,672
Arbitration Appeals	0	0	0
Transferred In	0	0	0
Returned to Active	13	0	13
Cases Available for Processing	3,085	2,542	5,627
Disposed By:			
Default Judgments	850	324	1,174
Cases Decided by Arbitration Board	64	6	70
Dispositive Motions	10	23	33
Settlements	529	239	768
Moved to Inactive Status	0	0	0
Transferred/Withdrawn	0	0	0
Pa.R.J.A. 1901 Administrative Purge	0	0	0
Other	1	0	1
Jury Trial	10	0	10
Non-Jury Trial	2	0	2
Total Cases Disposed	1,466	592	2,058
Cases Pending 12/31/2011	1,619	1,950	3,569

Age of Pending Cases as of 12/31/2011 (Civil Action Only)		
0-6 months	784	48.4%
7-12 months	412	25.4%
13-18 months	410	25.3%
19-24 months	13	0.8%
25-30 months	0	
31-36 months	0	
37-42 months	0	
43-48 months	0	
49-54 months	0	
55-60 months	0	
61-66 months	0	
67-72 months	0	
Over 72 months	0	
Total	1,619	100.0%

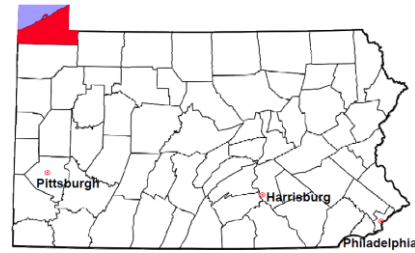
Docketed Cases, 2002-2011



Note: Prior to June 2010, docketed cases under the "Other" category were not reported. The reporting of these cases starting from June 2010 may contribute to an increase in docketed cases from 2009 to 2010.

Erie County

2011 Population Estimate: 280,985
 Class of County: 3rd
 No. of Common Pleas Court Judgeships: 9



2011 Civil - Docketed Cases Listed by Case Type

TORT (does not include mass tort)

Intentional	16
Malicious Prosecution	0
Motor Vehicle	277
Nuisance	0
Premise Liability	81
Product Liability	5
Slander/Libel/Defamation	5
Other	76

MASS TORT

Asbestos	1
Tobacco	0
Toxic Tort - DES	0
Toxic Tort - Implant	0
Toxic Waste	0
Other	0

PROFESSIONAL LIABILITY

Dental	1
Legal	4
Medical Malpractice	37
Other	6

CONTRACT

(does not include judgments)

Buyer Plaintiff	29
Debt Collection:	
Credit Card	827
Debt Collection: Other	442
Employment Dispute:	
Discrimination	2
Employment Dispute: Other	8
Other	77

REAL PROPERTY

Ejectment*	57
Eminent Domain/ Condemnation*	12
Ground Rent	0
Landlord/Tenant Dispute	43
Mortgage Forclosures:	
Residential*	414
Commercial*	14
Partition of Real Property*	3
Quiet Title*	22
Other*	10

CIVIL APPEALS

Administrative Agencies

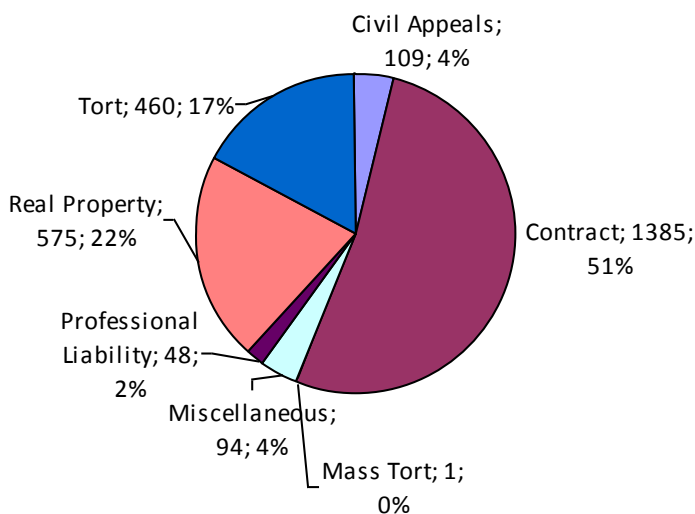
Board of Assessment*	11
Board of Elections*	7
Dept. of Transportation*	77
Zoning Board*	4
Statutory Appeal - Other*	6
Other*	4

MISCELLANEOUS

Common Law/ Statutory Arbitration*	3
Declaratory Judgment*	18
Mandamus*	1
Non-Domestic Relations Restraining Order*	1
Quo Warranto*	0
Replevin*	21
Other*	50

TOTAL DOCKETED CASES:
2,672

* Civil Other



Of the Docketed Cases:

Pro Se Filings:	87	3.3%
Class Action Suits:	7	0.3%
MDJ Appeals:	242	9.1%

Erie County

2011 Population Estimate: 280,985
 Class of County: 3rd
 No. of Common Pleas Court Judgeships: 9



2011 Protection From Abuse

**No. of
Petitions**

Cases Pending 1/1/2011	23
New Cases Filed in 2011	854

*Of these, Petitions Requesting Temporary Orders: 854 (100.0%)
 Temporary Orders DENIED: 153 (17.9%), Temporary Orders GRANTED: 701 (82.1%)*

Cases Available for Processing 877

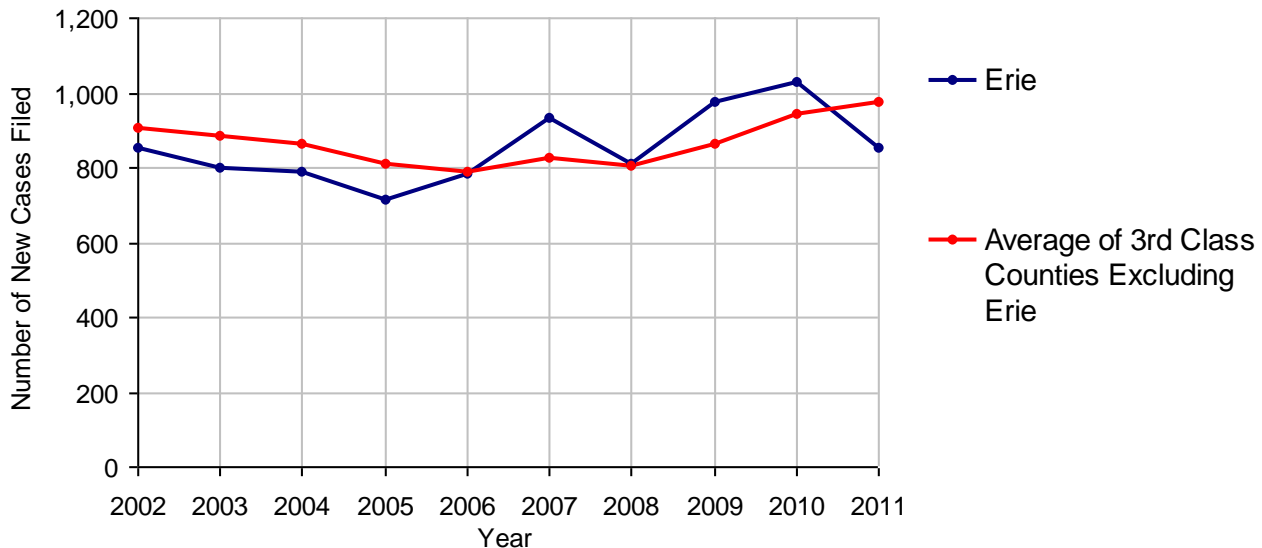
Processed By:

Temporary Order DENIED After Ex Parte Hearing and No Evidentiary Hearing Scheduled	139	16.0%
Temporary Order DISMISSED After Evidentiary Hearing and No Final Order Entered	7	0.8%
Final Order DENIED After Evidentiary Hearing Before a Judge	64	7.4%
Final Order GRANTED After Evidentiary Hearing Before a Judge	181	20.8%
Plaintiff Did Not Appear For Evidentiary Hearing	62	7.1%
Final Order by STIPULATION OR AGREEMENT Between the Parties	310	35.7%
Petition WITHDRAWN by Plaintiff	106	12.2%
TRANSFERRED to Another Jurisdiction	0	
DECEASED Party	0	
Other	0	

Cases Processed 869 100.0%

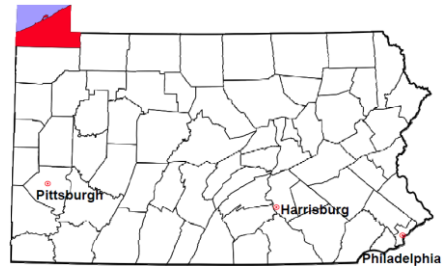
Cases Pending 12/31/2011 8

PFA New Cases Filed, 2002-2011

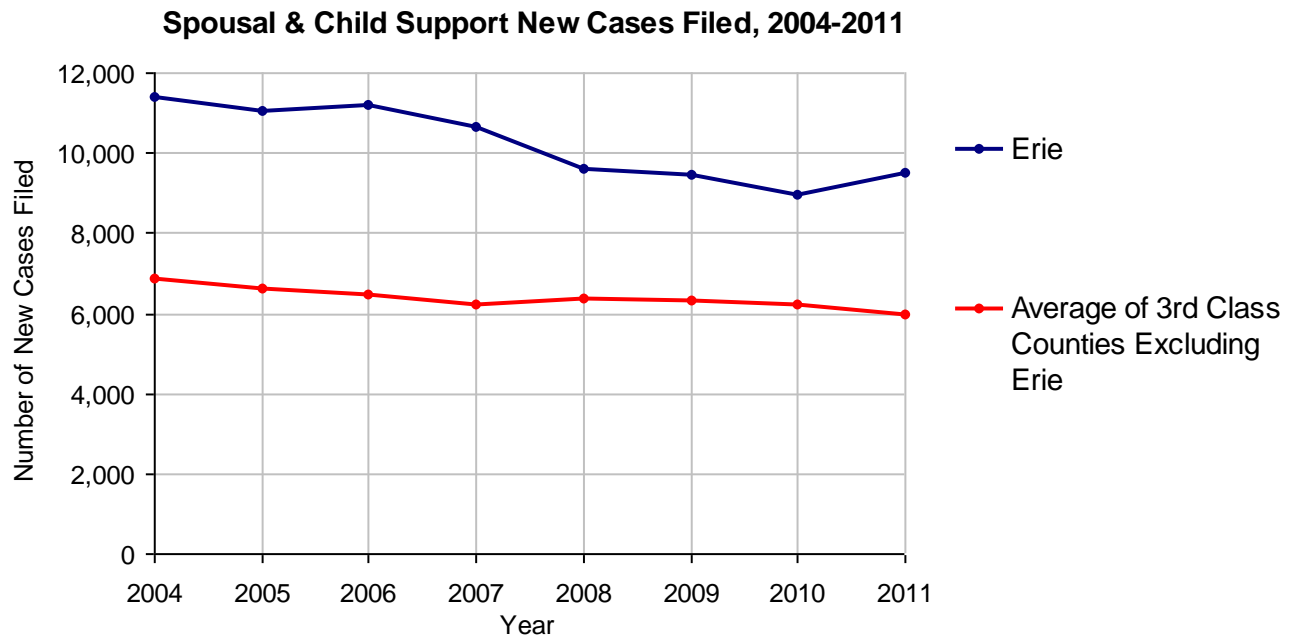


Erie County

2011 Population Estimate: 280,985
 Class of County: 3rd
 No. of Common Pleas Court Judgeships: 9



2011 Spousal & Child Support	No. of Petitions	
Cases Pending 1/1/2011	1,104	
New Cases Filed in 2011	9,529	
Dockets Transferred In (+)	45	
Dockets Transferred Out (-)	48	
Cases Available for Processing	10,630	
Processed By:		
Judge	339	3.7%
Intake Officer	8,754	96.3%
Hearing Officer	0	
Other	2	<0.1%
Cases Processed	9,095	100.0%
Cases Pending 12/31/2011	1,535	

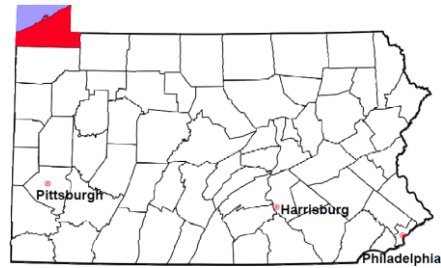


Erie County

2011 Population Estimate: 280,985

Class of County: 3rd

No. of Common Pleas Court Judgeships: 9



2011 Custody/Partial Custody/Visitation

No. of
Petitions

Cases Pending 1/1/2011

276

New Cases Filed in 2011

1,206

Cases Available for Processing

1,482

Processed By:

Judge

141

12.1%

Non-Judicial Officer

965

82.8%

Other

60

5.1%

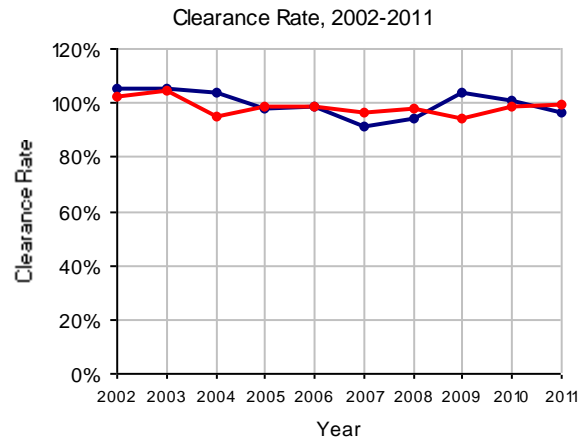
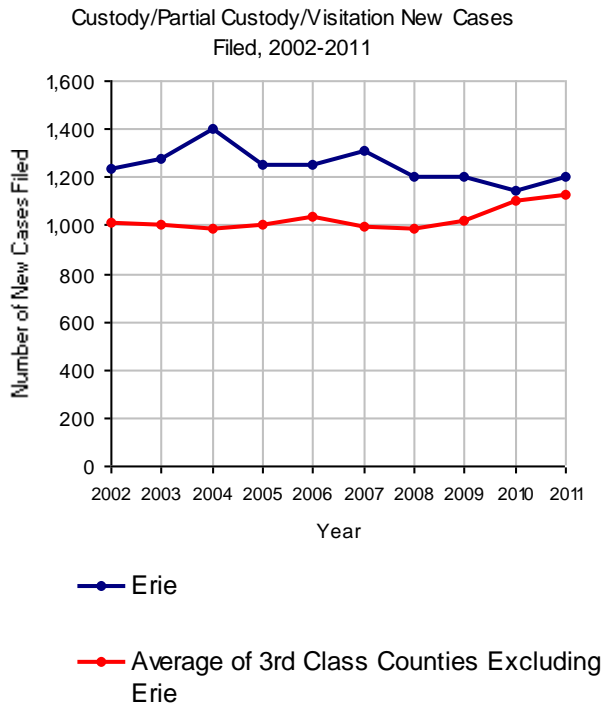
Cases Processed

1,166

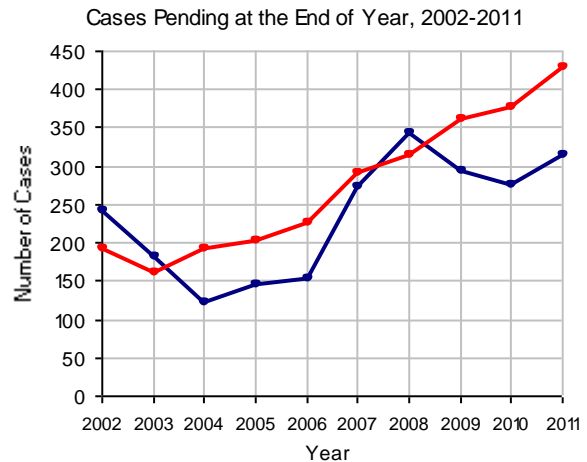
100.0%

Cases Pending 12/31/2011

316

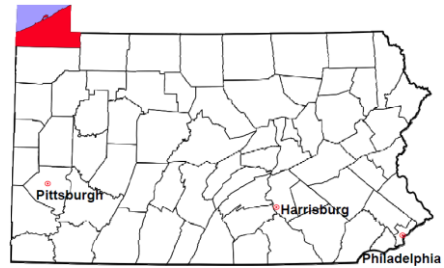


Note: Clearance Rate = Cases Processed / New Cases Filed



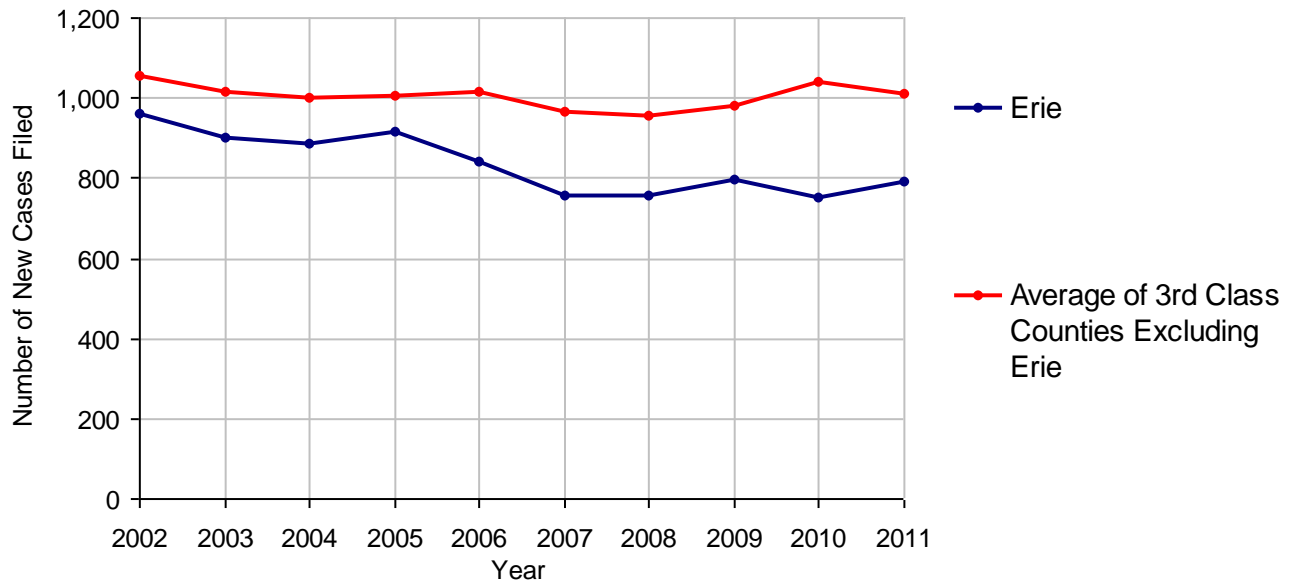
Erie County

2011 Population Estimate: 280,985
 Class of County: 3rd
 No. of Common Pleas Court Judgeships: 9



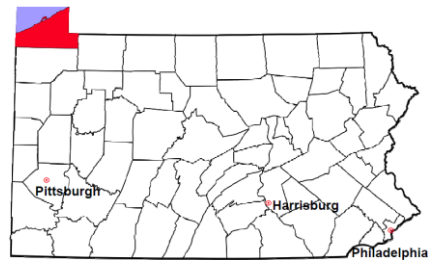
2011 Divorce	No. of Petitions	
Cases Pending 1/1/2011	167	
New Cases Filed in 2011	794	
Cases Available for Processing	961	
Processed By:		
Contested Before a Judge	0	
Contested Before a Master	42	5.4%
Uncontested	732	93.4%
Other	10	1.3%
Cases Processed	784	100.0%
Cases Pending 12/31/2011	177	

Divorce New Cases Filed, 2002-2011



Erie County

2011 Population Estimate: 280,985
 Class of County: 3rd
 No. of Common Pleas Court Judgeships: 9



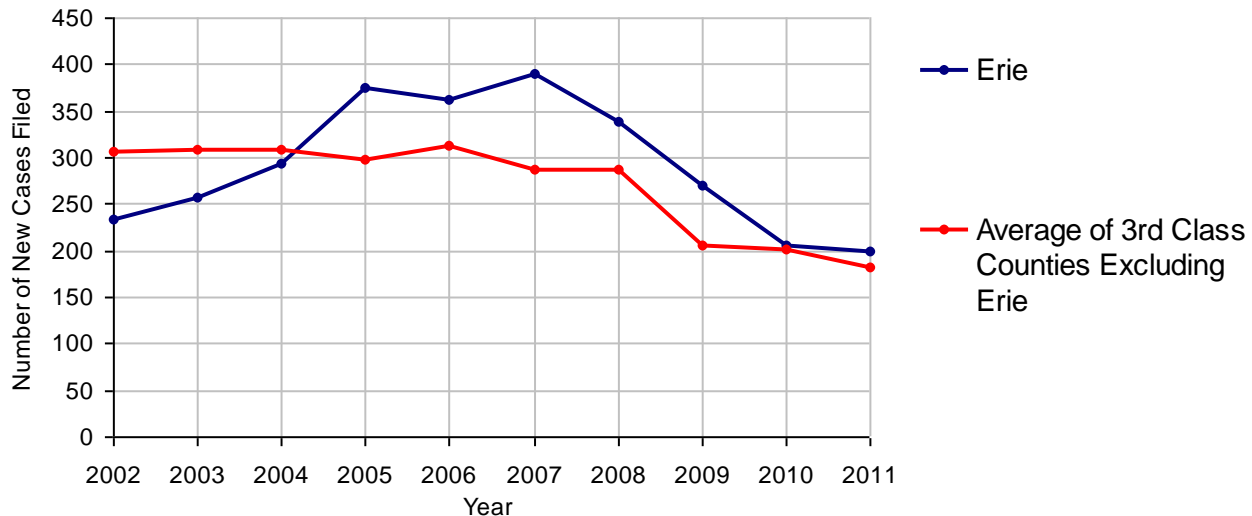
2011 Juvenile Dependency - Active Dependent Inventory



	Abuse/ Neglect	Status Offenses	Total
Cases Pending 1/1/2011	12	1	13
New Petitions Filed in 2011	194	6	200
Other	6	0	6
Total Petitions Available for Processing	212	7	219
Processed by:			
Adjudicated Dependent			
Judge	32	1	33
Master	153	5	158
Adjudicated NOT Dependent			
Judge	2	0	2
Master	3	0	3
Withdrawn/Dismissed/Inactive	0	0	0
Other	15	0	15
Total Petitions Processed	205	6	211
Cases Pending 12/31/2011	7	1	8

Data provided by CPCMS

Abuse/Neglect and Status Offenses New Cases Filed, 2002-2011



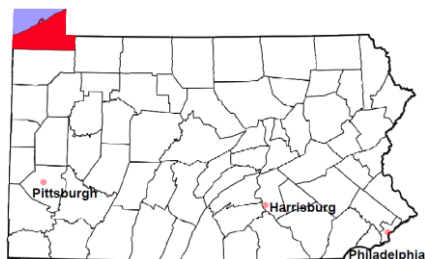
Note: Dependency data for 2002-2010 were collected manually. Dependency data for 2011 were provided by CPCMS.

Erie County

2011 Population Estimate: 280,985

Class of County: 3rd

No. of Common Pleas Court Judgeships: 9



2011 Juvenile Dependency - Adjudicated Dependent Inventory



	Abuse/ Neglect	Status Offenses	Total	
Cases Pending 1/1/2011	370	3	373	
New Adjudicated Dependent Cases	185	6	191	
Other	14	0	14	
Total Adjudicated Dependent Cases	569	9	578	
<u>Court Supervision Terminated:</u>				
Family Reunification	100	2	102	39.5%
Adoption	71	0	71	27.5%
Placement with a Relative/Guardian	58	0	58	22.5%
Aged Out	13	0	13	5.0%
Other Permanency Outcomes*	2	0	2	0.8%
Other**	12	0	12	4.7%
Total Adjudicated Dependent Cases Terminated	256	2	258	100.0%
Cases Pending 12/31/2011	313	7	320	

Data provided by CPCMS

* Other Permanency Outcomes include: adjudicated delinquent, death due to natural causes, emancipation, permanent living arrangement, and parent has come forward.

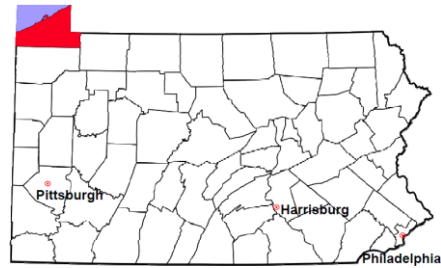
** Other includes cases where Court Supervision is terminated due to transfer out of jurisdiction, withdrawal and administrative closures.

Erie County

2011 Population Estimate: 280,985

Class of County: 3rd

No. of Common Pleas Court Judgeships: 9



2011 Juvenile Delinquency

No. of Cases

Cases Pending 1/1/2011 1,050

New Cases Filed in 2011 1,252

Cases Available for Processing 2,302

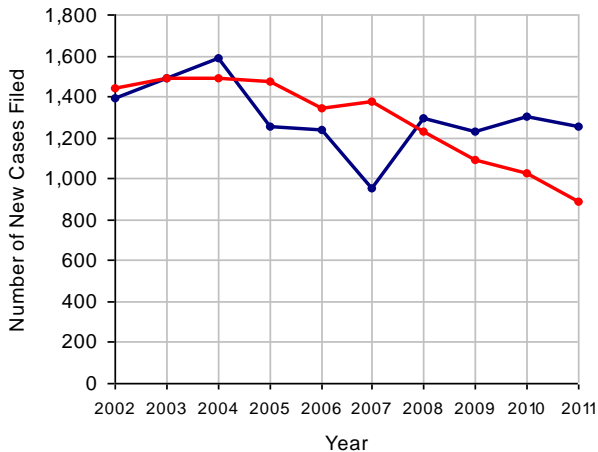
Processed By:

Judge	446	23.4%
Non-Judicial Officer	307	16.1%
Other	1,152	60.5%

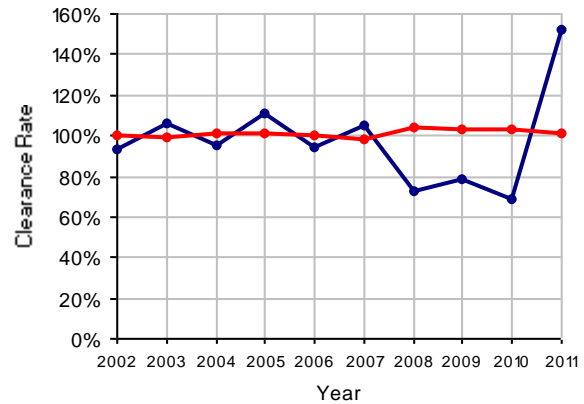
Cases Processed 1,905 100.0%

Cases Pending 12/31/2011 397

Juvenile Delinquency New Cases Filed, 2002-2011

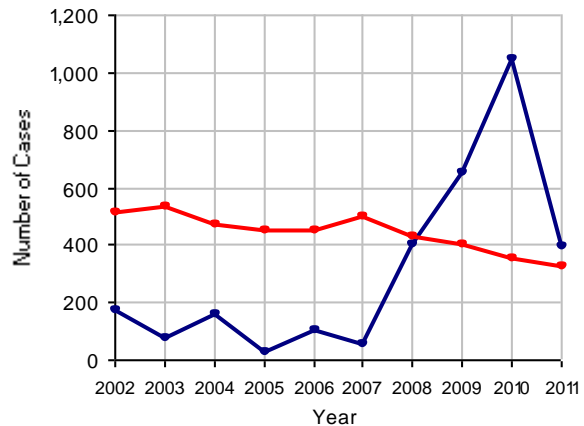


Clearance Rate, 2002-2011



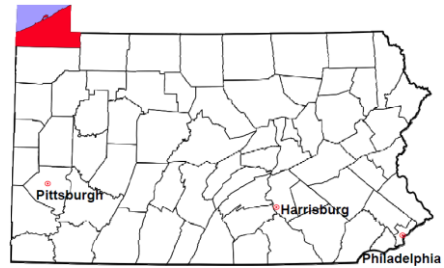
Note: Clearance Rate = Cases Processed / New Cases Filed

Cases Pending at the End of Year, 2002-2011



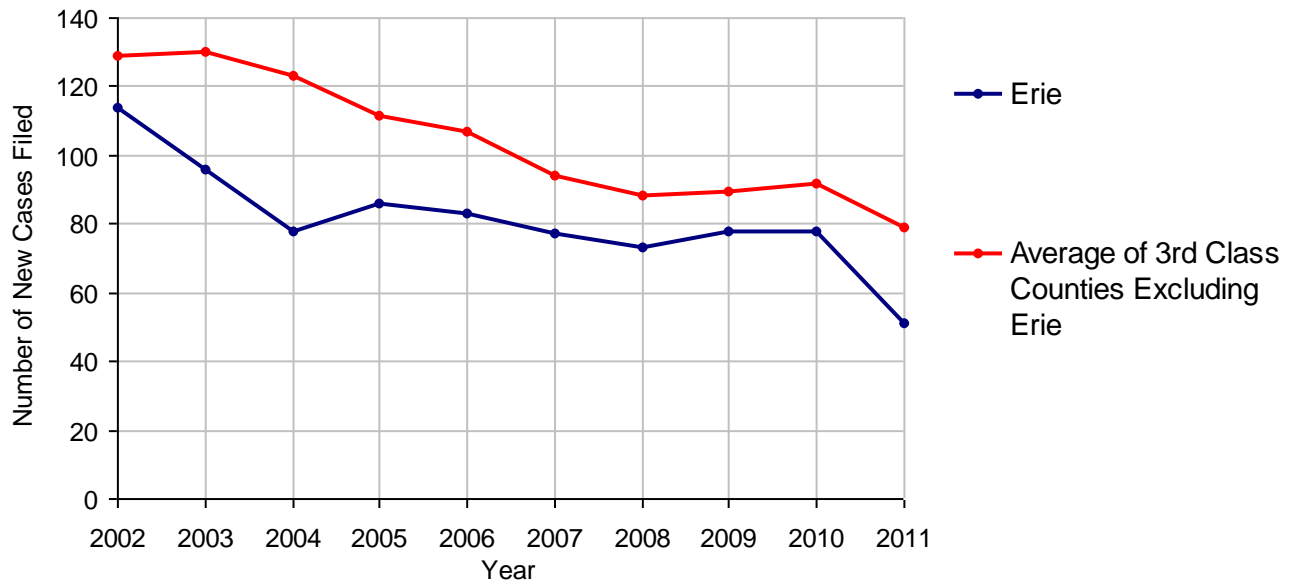
Erie County

2011 Population Estimate: 280,985
 Class of County: 3rd
 No. of Common Pleas Court Judgeships: 9



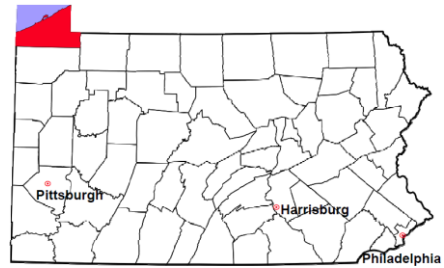
2011 Accounts	No. of Cases	
Cases Pending 1/1/2011	31	
New Cases Filed in 2011	51	
Cases Available for Processing	82	
Processed By:		
Contested before a Judge	0	
Contested before a Non-judicial Officer	0	
Uncontested	55	100.0%
Other	0	
Cases Processed	55	100.0%
Cases Pending 12/31/2011	27	

Accounts New Cases Filed, 2002-2011



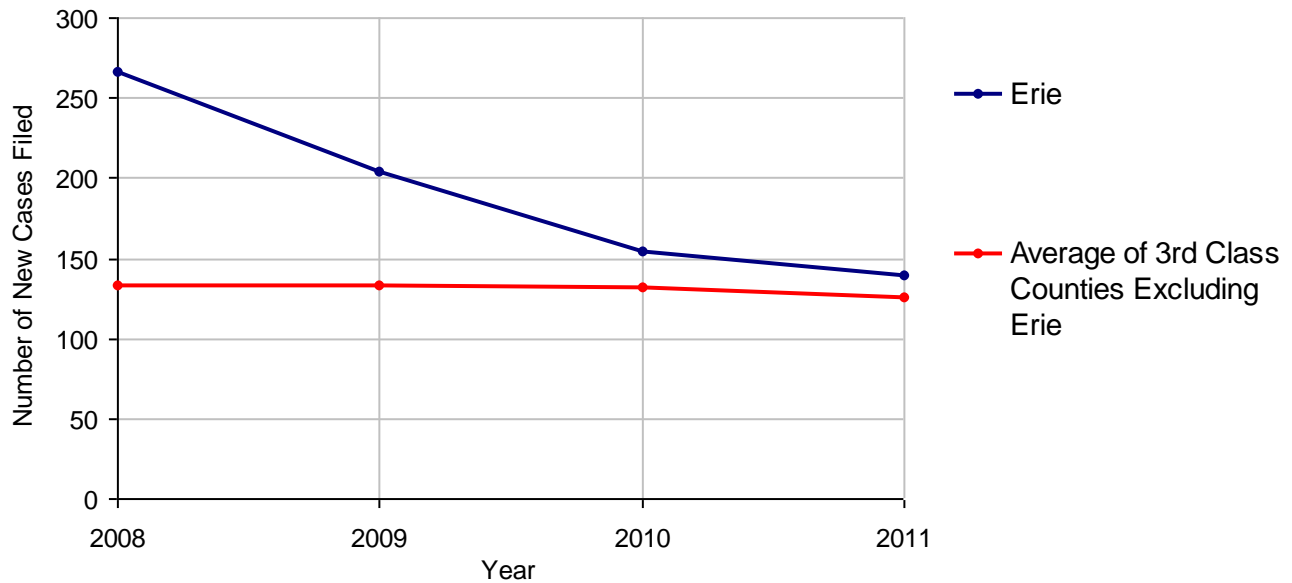
Erie County

2011 Population Estimate: 280,985
 Class of County: 3rd
 No. of Common Pleas Court Judgeships: 9



2011 Adoptions		No. of Cases	
Cases Pending 1/1/2011		50	
New Cases Filed in 2011		139	
Cases Available for Processing		189	
Processed By:			
Contested before a Judge	Granted	8	6.3%
	Denied	0	
Uncontested	Granted	118	92.9%
	Denied	0	
Other		1	0.8%
Cases Processed		127	100.0%
Cases Pending 12/31/2011		62	

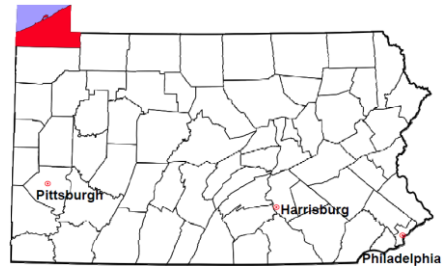
Adoptions New Cases Filed, 2008-2011



Note: Prior to 2008, each petition was counted as one new case, regardless of the number of children listed on the petition. Starting in 2008, each child listed on a petition is counted as a separate case. Therefore, statistics for the years since 2008 should not be compared to those for the years prior to 2008.

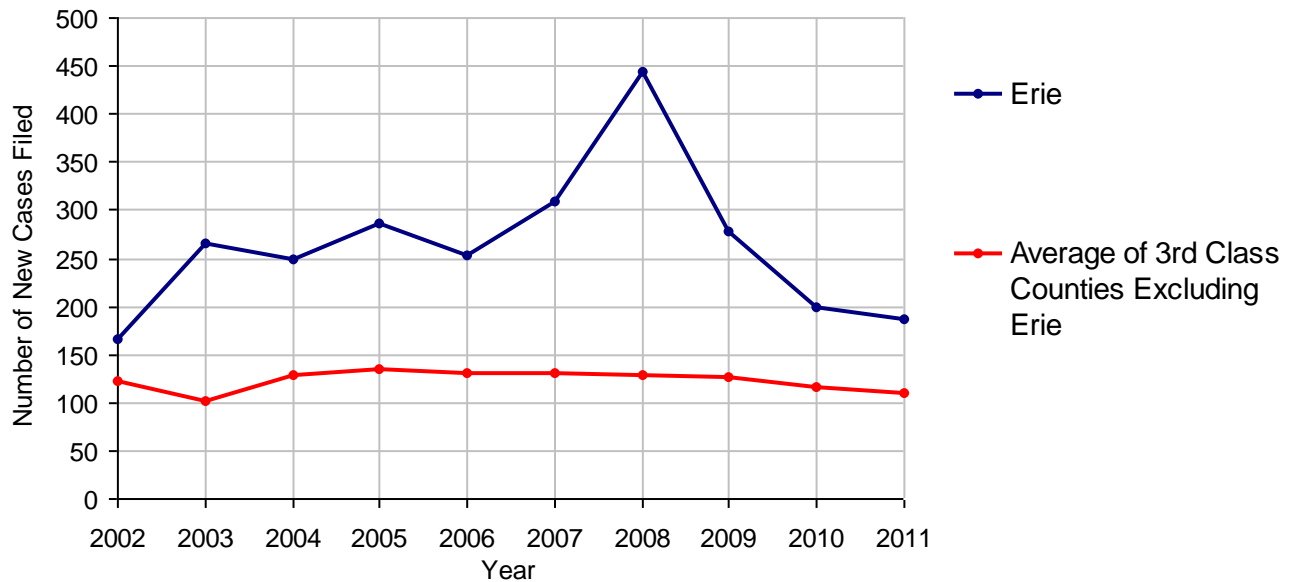
Erie County

2011 Population Estimate: 280,985
 Class of County: 3rd
 No. of Common Pleas Court Judgeships: 9



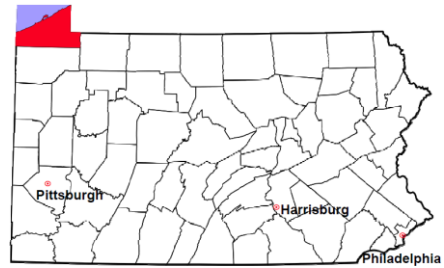
2011 Relinquishments/Terminations	No. of Cases
Cases Pending 1/1/2011	145
New Cases Filed in 2011	187
Cases Available for Processing	332
Processed By:	
Contested before a Judge	30 13.2%
Uncontested	198 86.8%
Other	0
Cases Processed	228 100.0%
Cases Pending 12/31/2011	104

Relinquishments/Terminations New Cases Filed, 2002-2011



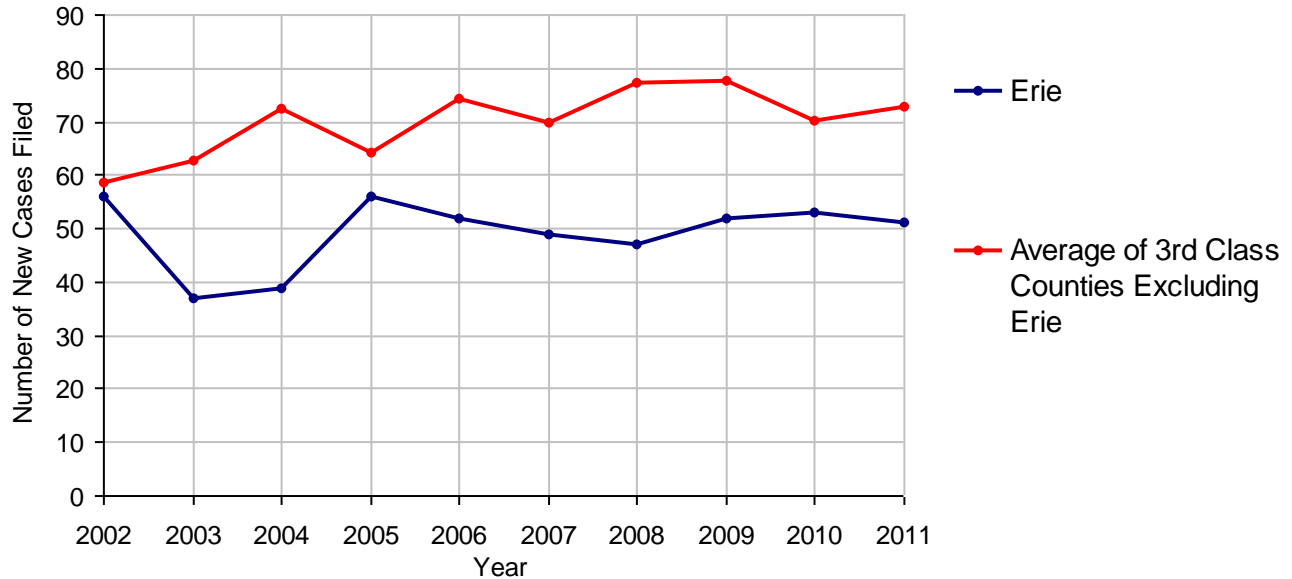
Erie County

2011 Population Estimate: 280,985
 Class of County: 3rd
 No. of Common Pleas Court Judgeships: 9



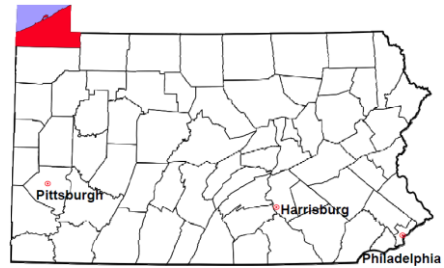
2011 Appointment of Guardians	No. of Cases
Cases Pending 1/1/2011	10
New Cases Filed in 2011	51
Cases Available for Processing	61
Processed By:	
Contested before a Judge	1 1.8%
Uncontested	47 82.5%
Other	9 15.8%
Cases Processed	57 100.0%
Cases Pending 12/31/2011	4

Appointment of Guardians New Cases Filed, 2002-2011



Erie County

2011 Population Estimate: 280,985
Class of County: 3rd
No. of Common Pleas Court Judgeships: 9



2011 Jury Activity and Performance Measures

A. Juror Days	6,170
B. Number Sent to Voir Dire	4,474
Voir Dire Attendance Rate (B/A * 100)	72.5%
C. Number of Jurors Selected	1,400
Juror Selection Rate (C/B * 100)	31.3%

Note: In mid-2011, AOPC began utilizing the National Center for State Courts' Jury Managers' Toolbox for collecting jury data. This has resulted in limited jury performance measures being reported for 2011. Additional data will be available in 2012.