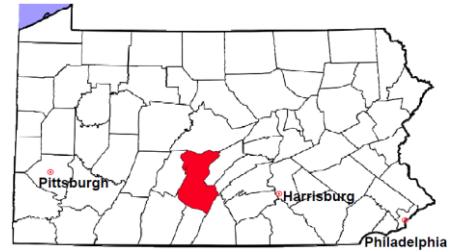


Huntingdon County

2011 Population Estimate: 45,875

Class of County: 6th

No. of Common Pleas Court Judgeships: 1



2011 Criminal	No. of Cases
---------------	--------------

Cases Pending 1/1/2011	242
New Cases Filed in 2011	697
Reopened Cases	11
Cases Available for Disposition	950

Disposed by:

Withdrawn/Dismissed	20	2.9%
ARD	163	23.8%
Guilty Plea	466	68.0%
Non-Jury Trial	7	1.0%
Jury Trial	7	1.0%
Inactive	9	1.3%
Other	13	1.9%
Total Cases Disposed	685	100.0%

Cases Pending 12/31/2011 **265**

Cases Awaiting Sentencing 44

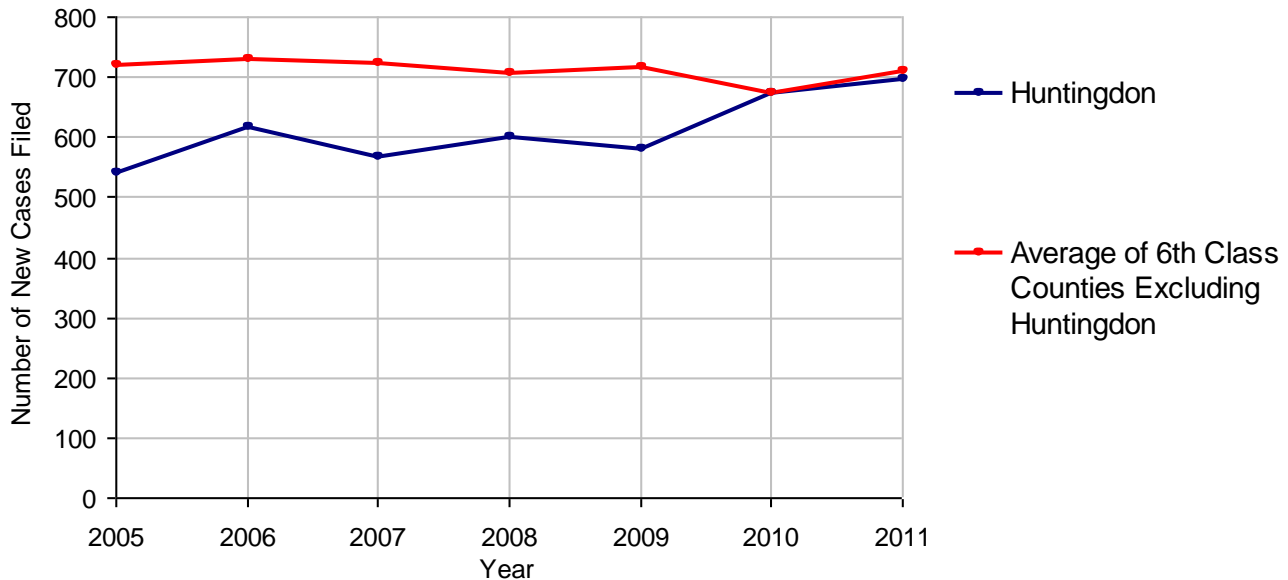
Data provided by CPCMS



Age of Pending Cases as of 12/31/2011

0-60 Days	106	40.0%
61-120 Days	47	17.7%
121-180 Days	52	19.6%
181-240 Days	13	4.9%
241-300 Days	9	3.4%
301-360 Days	6	2.3%
Over 360 Days	32	12.1%
Total	265	100.0%

Criminal New Cases Filed, 2005-2011

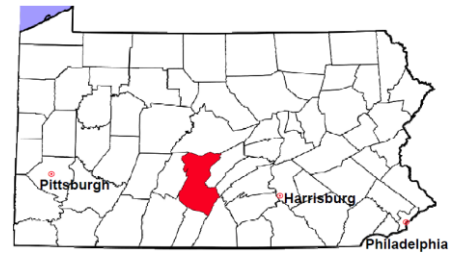


Huntingdon County

2011 Population Estimate: 45,875

Class of County: 6th

No. of Common Pleas Court Judgeships: 1



2011 Criminal - New Cases by Case Type



Case Type	Felony	Misdemeanor	Summary /Ungraded	Total
Person	33	77	0	110
Property	82	107	0	189
Drug	23	53	0	76
Weapon	3	5	0	8
Public Order	86	72	1	159
Motor Vehicle - DWI/DUI	0	155	0	155
Motor Vehicle - Other	0	0	0	0
Other	0	0	0	0
Total	227	469	1	697
	32.6%	67.3%	0.1%	100.0%

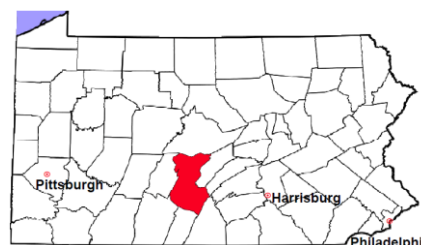
Data provided by CPCMS

Huntingdon County

2011 Population Estimate: 45,875

Class of County: 6th

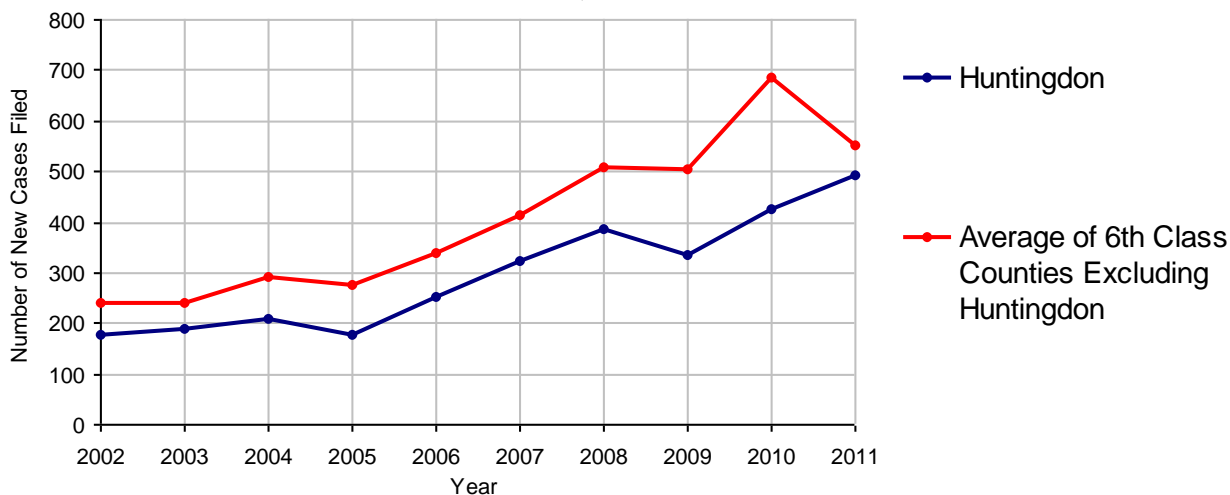
No. of Common Pleas Court Judgeships: 1



2011 Civil	Civil Action	Other	Total
Cases Pending 1/1/2011	129	81	210
Docketed Cases	204	288	492
Arbitration Appeals	0	0	0
Transferred In	3	1	4
Returned to Active	6	6	12
Cases Available for Processing	342	376	718
Disposed By:			
Default Judgments	93	48	141
Cases Decided by Arbitration Board	3	0	3
Dispositive Motions	5	11	16
Settlements	59	15	74
Moved to Inactive Status	0	0	0
Transferred/Withdrawn	1	0	1
Pa.R.J.A. 1901 Administrative Purge	0	0	0
Other	21	2	23
Jury Trial	0	0	0
Non-Jury Trial	0	0	0
Total Cases Disposed	182	76	258
Cases Pending 12/31/2011	160	300	460

Age of Pending Cases as of 12/31/2011 (Civil Action Only)		
0-6 months	71	44.4%
7-12 months	40	25.0%
13-18 months	49	30.6%
19-24 months	0	
25-30 months	0	
31-36 months	0	
37-42 months	0	
43-48 months	0	
49-54 months	0	
55-60 months	0	
61-66 months	0	
67-72 months	0	
Over 72 months	0	
Total	160	100.0%

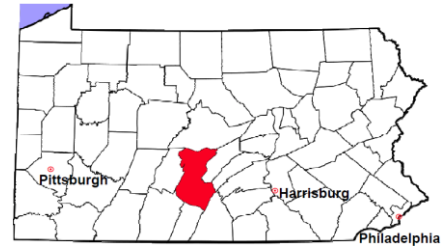
Docketed Cases, 2002-2011



Note: Prior to June 2010, docketed cases under the "Other" category were not reported. The reporting of these cases starting from June 2010 may contribute to an increase in docketed cases from 2009 to 2010.

Huntingdon County

2011 Population Estimate: 45,875
 Class of County: 6th
 No. of Common Pleas Court Judgeships: 1



2011 Civil - Docketed Cases Listed by Case Type

TORT (does not include mass tort)

Intentional	5
Malicious Prosecution	0
Motor Vehicle	18
Nuisance	0
Premise Liability	6
Product Liability	0
Slander/Libel/Defamation	0
Other	9

MASS TORT

Asbestos	0
Tobacco	0
Toxic Tort - DES	0
Toxic Tort - Implant	0
Toxic Waste	0
Other	0

PROFESSIONAL LIABILITY

Dental	0
Legal	0
Medical Malpractice	4
Other	1

CONTRACT

(does not include judgments)

Buyer Plaintiff	2
Debt Collection:	
Credit Card	107
Debt Collection: Other	32
Employment Dispute:	
Discrimination	0
Employment Dispute: Other	2
Other	11

REAL PROPERTY

Ejectment*	7
Eminent Domain/ Condemnation*	165
Ground Rent	0
Landlord/Tenant Dispute	7
Mortgage Forclosures:	
Residential*	54
Commercial*	5
Partition of Real Property*	4
Quiet Title*	6
Other*	5

CIVIL APPEALS

Administrative Agencies

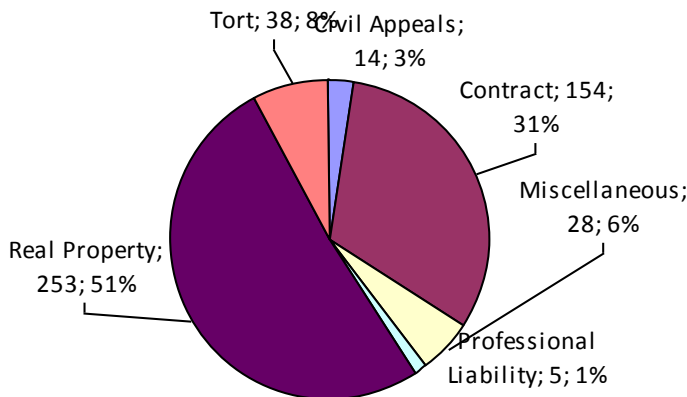
Board of Assessment*	1
Board of Elections*	0
Dept. of Transportation*	6
Zoning Board*	1
Statutory Appeal - Other*	1
Other*	5

MISCELLANEOUS

Common Law/ Statutory Arbitration*	0
Declaratory Judgment*	3
Mandamus*	4
Non-Domestic Relations Restraining Order*	0
Quo Warranto*	0
Replevin*	5
Other*	16

TOTAL DOCKETED CASES: 492

* Civil Other



Of the Docketed Cases:

Pro Se Filings:	25	5.1%
Class Action Suits:	0	
MDJ Appeals:	26	5.3%

Huntingdon County

2011 Population Estimate: 45,875
 Class of County: 6th
 No. of Common Pleas Court Judgeships: 1



2011 Protection From Abuse

**No. of
Petitions**

Cases Pending 1/1/2011 17

New Cases Filed in 2011 75

Of these, Petitions Requesting Temporary Orders: 75 (100.0%)

Temporary Orders DENIED: 0 (0.0%), Temporary Orders GRANTED: 75 (100.0%)

Cases Available for Processing 92

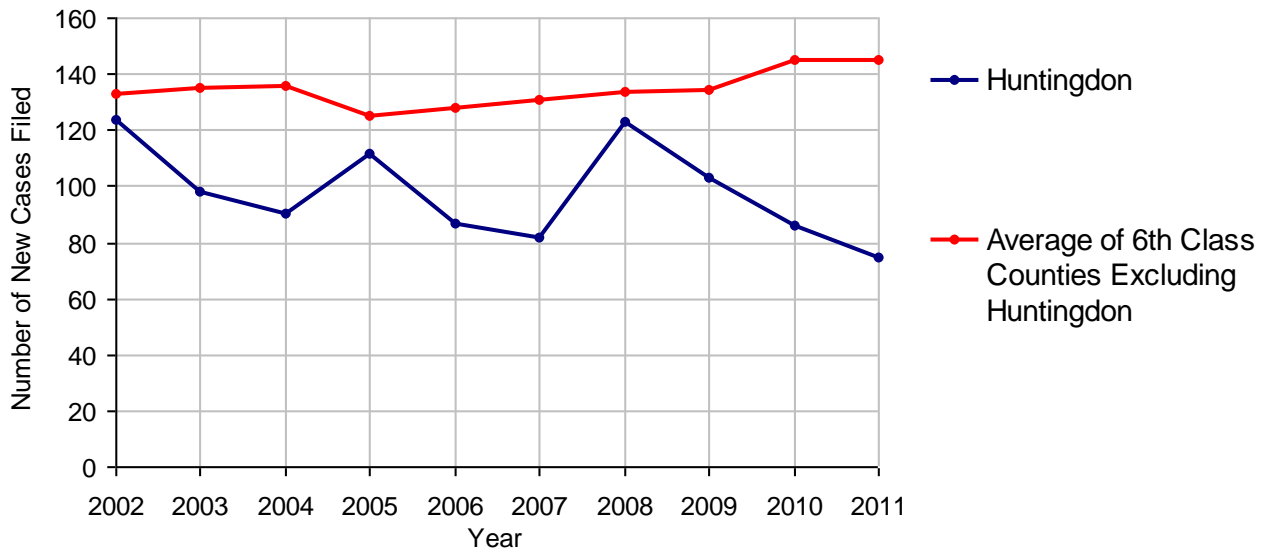
Processed By:

Temporary Order DENIED After Ex Parte Hearing and No Evidentiary Hearing Scheduled	0	
Temporary Order DISMISSED After Evidentiary Hearing and No Final Order Entered	1	1.3%
Final Order DENIED After Evidentiary Hearing Before a Judge	2	2.6%
Final Order GRANTED After Evidentiary Hearing Before a Judge	5	6.5%
Plaintiff Did Not Appear For Evidentiary Hearing	2	2.6%
Final Order by STIPULATION OR AGREEMENT Between the Parties	28	36.4%
Petition WITHDRAWN by Plaintiff	1	1.3%
TRANSFERRED to Another Jurisdiction	0	
DECEASED Party	1	1.3%
Other	37	48.1%

Cases Processed 77 100.0%

Cases Pending 12/31/2011 15

PFA New Cases Filed, 2002-2011

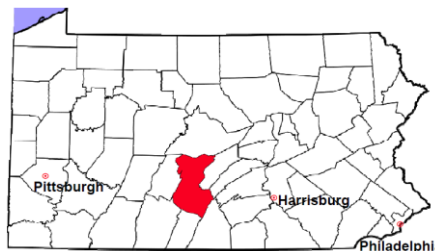


Huntingdon County

2011 Population Estimate: 45,875

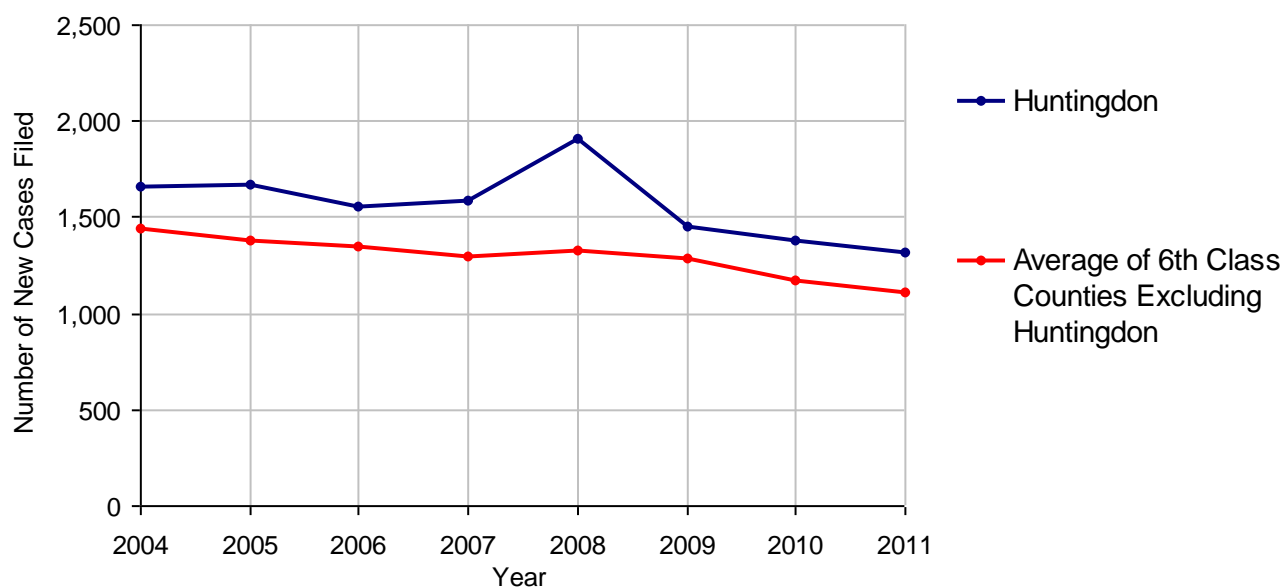
Class of County: 6th

No. of Common Pleas Court Judgeships: 1



2011 Spousal & Child Support	No. of Petitions	
Cases Pending 1/1/2011	219	
New Cases Filed in 2011	1,319	
Dockets Transferred In (+)	168	
Dockets Transferred Out (-)	17	
Cases Available for Processing	1,689	
Processed By:		
Judge	12	0.8%
Intake Officer	1,454	99.2%
Hearing Officer	0	
Other	0	
Cases Processed	1,466	100.0%
Cases Pending 12/31/2011	223	

Spousal & Child Support New Cases Filed, 2004-2011

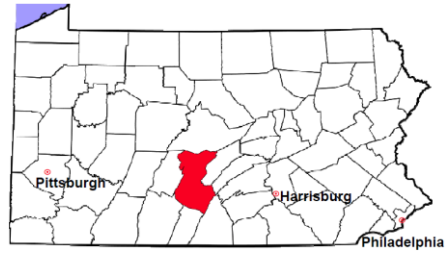


Huntingdon County

2011 Population Estimate: 45,875

Class of County: 6th

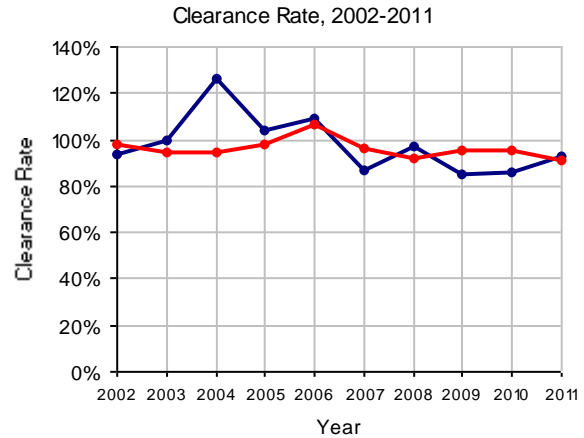
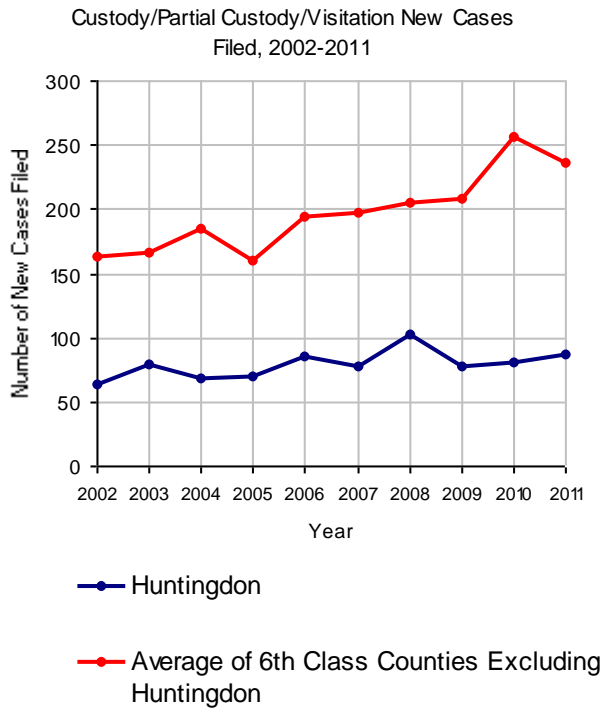
No. of Common Pleas Court Judgeships: 1



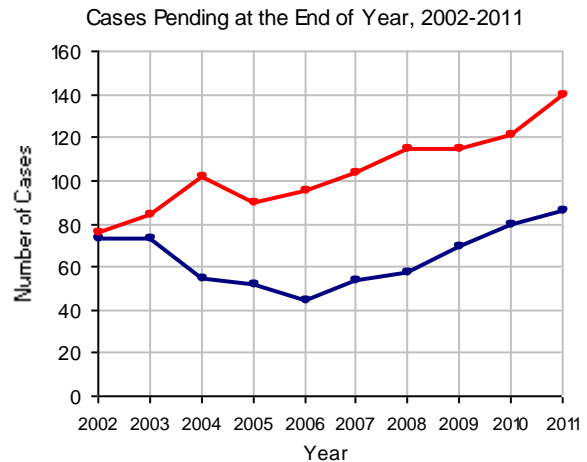
2011 Custody/Partial Custody/Visitation

No. of
Petitions

Cases Pending 1/1/2011	80
New Cases Filed in 2011	87
Cases Available for Processing	167
Processed By:	
Judge	79 97.5%
Non-Judicial Officer	0
Other	2 2.5%
Cases Processed	81 100.0%
Cases Pending 12/31/2011	86

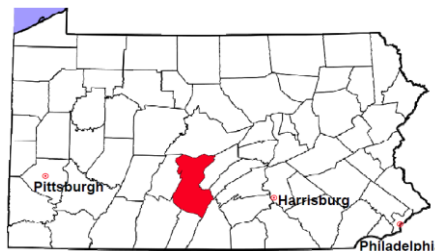


Note: Clearance Rate = Cases Processed / New Cases Filed



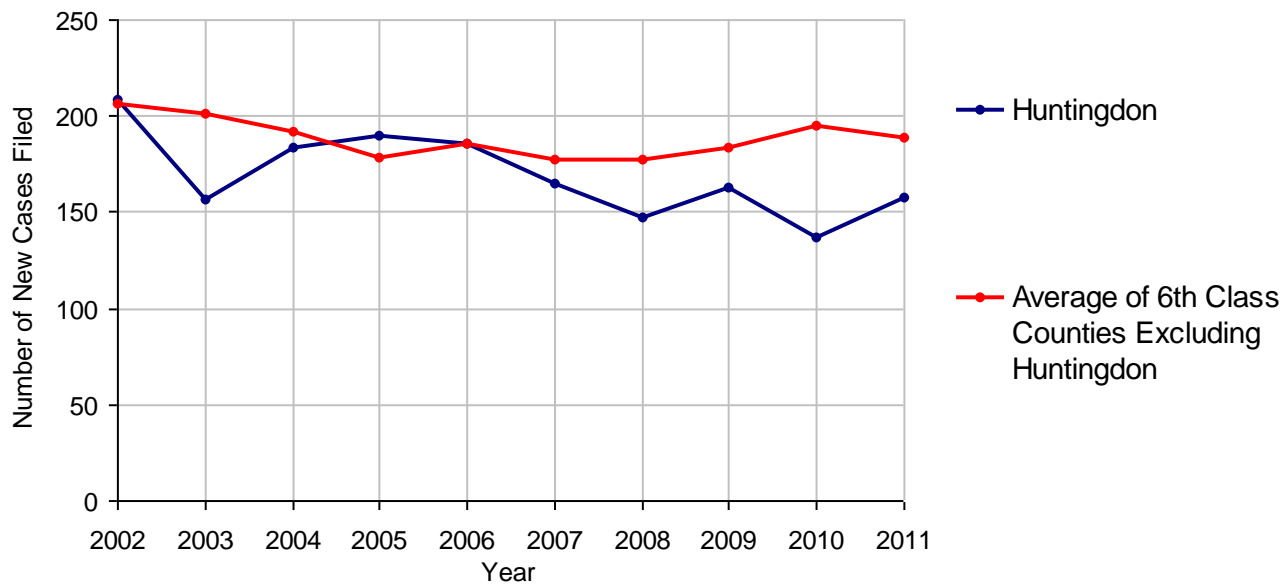
Huntingdon County

2011 Population Estimate: 45,875
 Class of County: 6th
 No. of Common Pleas Court Judgeships: 1



2011 Divorce	No. of Petitions	
Cases Pending 1/1/2011	272	
New Cases Filed in 2011	158	
Cases Available for Processing	430	
Processed By:		
Contested Before a Judge	37	25.0%
Contested Before a Master	0	
Uncontested	96	64.9%
Other	15	10.1%
Cases Processed	148	100.0%
Cases Pending 12/31/2011	282	

Divorce New Cases Filed, 2002-2011

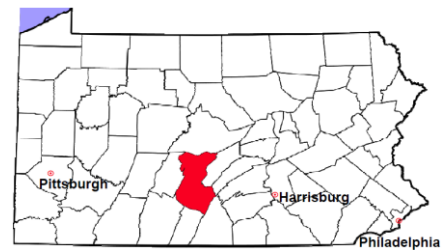


Huntingdon County

2011 Population Estimate: 45,875

Class of County: 6th

No. of Common Pleas Court Judgeships: 1



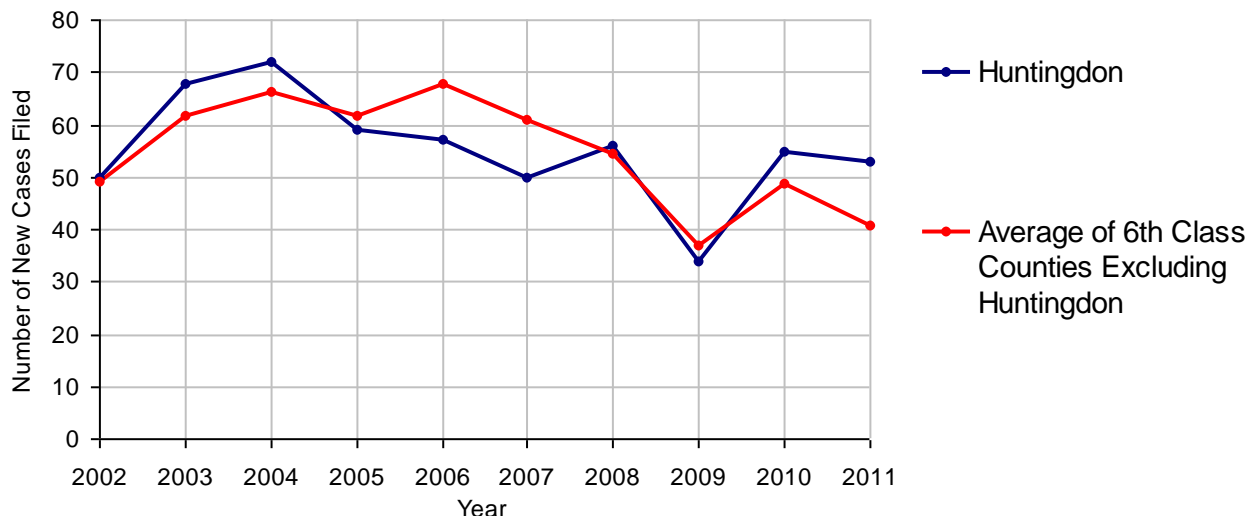
2011 Juvenile Dependency - Active Dependent Inventory



	Abuse/ Neglect	Status Offenses	Total
Cases Pending 1/1/2011	8	1	9
New Petitions Filed in 2011	51	2	53
Other	0	0	0
Total Petitions Available for Processing	59	3	62
Processed by:			
Adjudicated Dependent			
Judge	30	3	33
Master	0	0	0
Adjudicated NOT Dependent			
Judge	2	0	2
Master	0	0	0
Withdrawn/Dismissed/Inactive	16	0	16
Other	2	0	2
Total Petitions Processed	50	3	53
Cases Pending 12/31/2011	9	0	9

Data provided by CPCMS

Abuse/Neglect and Status Offenses New Cases Filed, 2002-2011



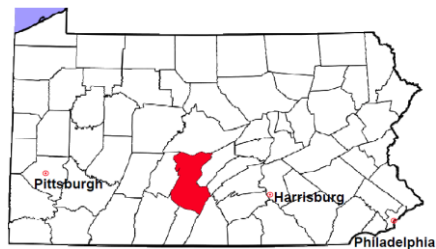
Note: Dependency data for 2002-2010 were collected manually. Dependency data for 2011 were provided by CPCMS.

Huntingdon County

2011 Population Estimate: 45,875

Class of County: 6th

No. of Common Pleas Court Judgeships: 1



2011 Juvenile Dependency - Adjudicated Dependent Inventory

	Abuse/ Neglect	Status Offenses	Total	
Cases Pending 1/1/2011	37	1	38	
New Adjudicated Dependent Cases	30	3	33	
Other	0	0	0	
Total Adjudicated Dependent Cases	67	4	71	
<u>Court Supervision Terminated:</u>				
Family Reunification	3	2	5	12.2%
Adoption	7	0	7	17.1%
Placement with a Relative/Guardian	15	0	15	36.6%
Aged Out	5	1	6	14.6%
Other Permanency Outcomes*	4	0	4	9.8%
Other**	4	0	4	9.8%
Total Adjudicated Dependent Cases Terminated	38	3	41	100.0%
Cases Pending 12/31/2011	29	1	30	

Data provided by CPCMS

* Other Permanency Outcomes include: adjudicated delinquent, death due to natural causes, emancipation, permanent living arrangement, and parent has come forward.

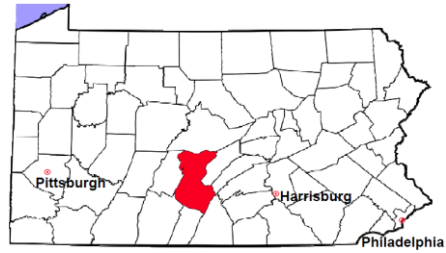
** Other includes cases where Court Supervision is terminated due to transfer out of jurisdiction, withdrawal and administrative closures.

Huntingdon County

2011 Population Estimate: 45,875

Class of County: 6th

No. of Common Pleas Court Judgeships: 1



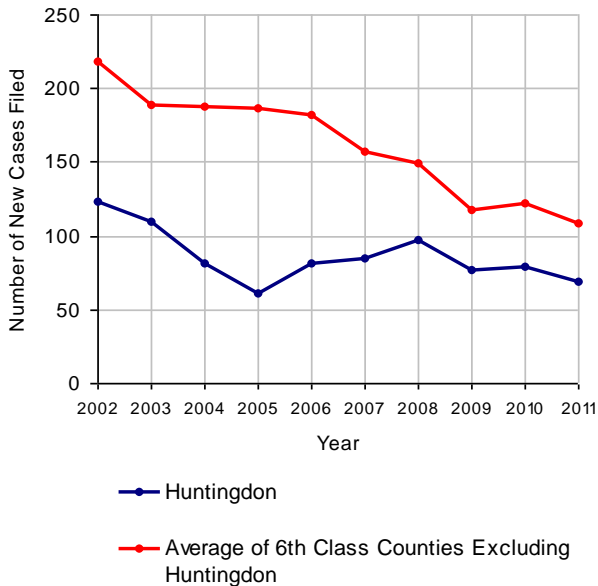
2011 Juvenile Delinquency

No. of Cases

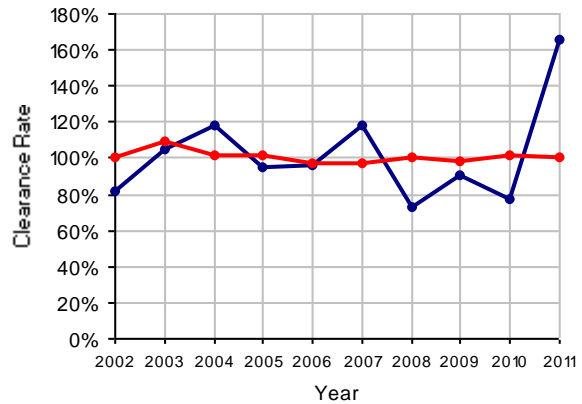
Cases Pending 1/1/2011	60
New Cases Filed in 2011	69
Cases Available for Processing	129
Processed By:	
Judge	37 (O) 32.5%
Non-Judicial Officer	71 62.3%
Other	6 5.3%
Cases Processed	114 100.0%
Cases Pending 12/31/2011	15

(O) - Overinclusive, includes consent decrees.

Juvenile Delinquency New Cases Filed, 2002-2011

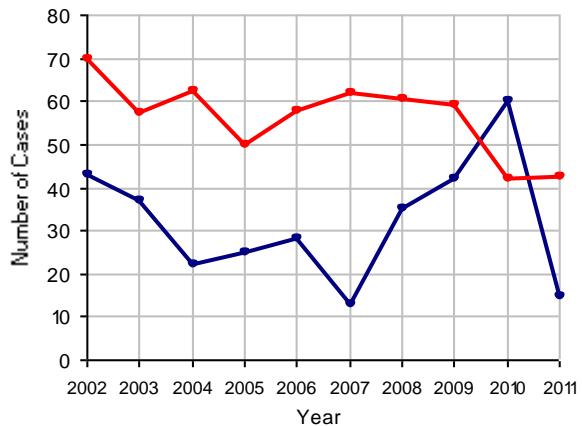


Clearance Rate, 2002-2011



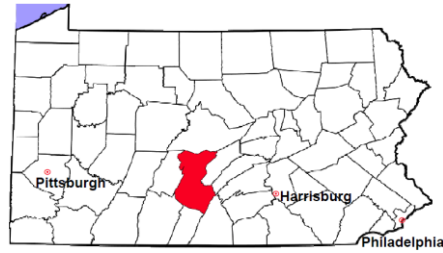
Note: Clearance Rate = Cases Processed / New Cases Filed

Cases Pending at the End of Year, 2002-2011



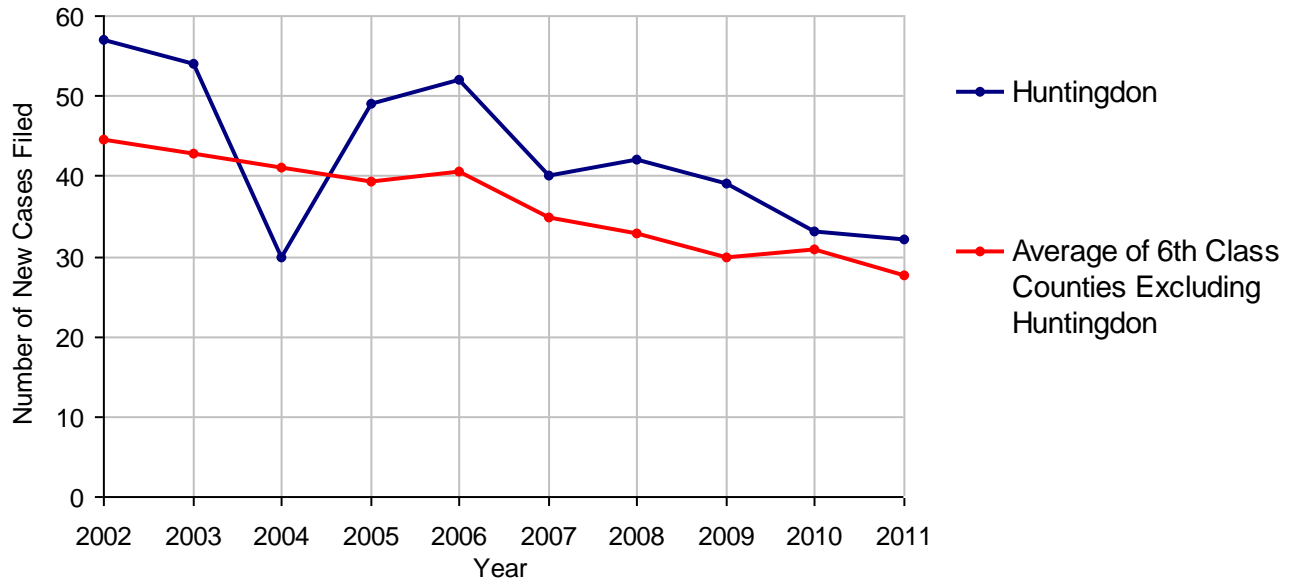
Huntingdon County

2011 Population Estimate: 45,875
 Class of County: 6th
 No. of Common Pleas Court Judgeships: 1



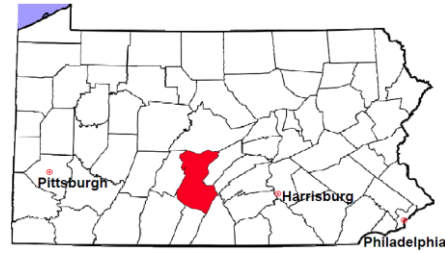
2011 Accounts	No. of Cases	
Cases Pending 1/1/2011	4	
New Cases Filed in 2011	32	
Cases Available for Processing	36	
Processed By:		
Contested before a Judge	1	2.9%
Contested before a Non-judicial Officer	0	
Uncontested	33	94.3%
Other	1	2.9%
Cases Processed	35	100.0%
Cases Pending 12/31/2011	1	

Accounts New Cases Filed, 2002-2011



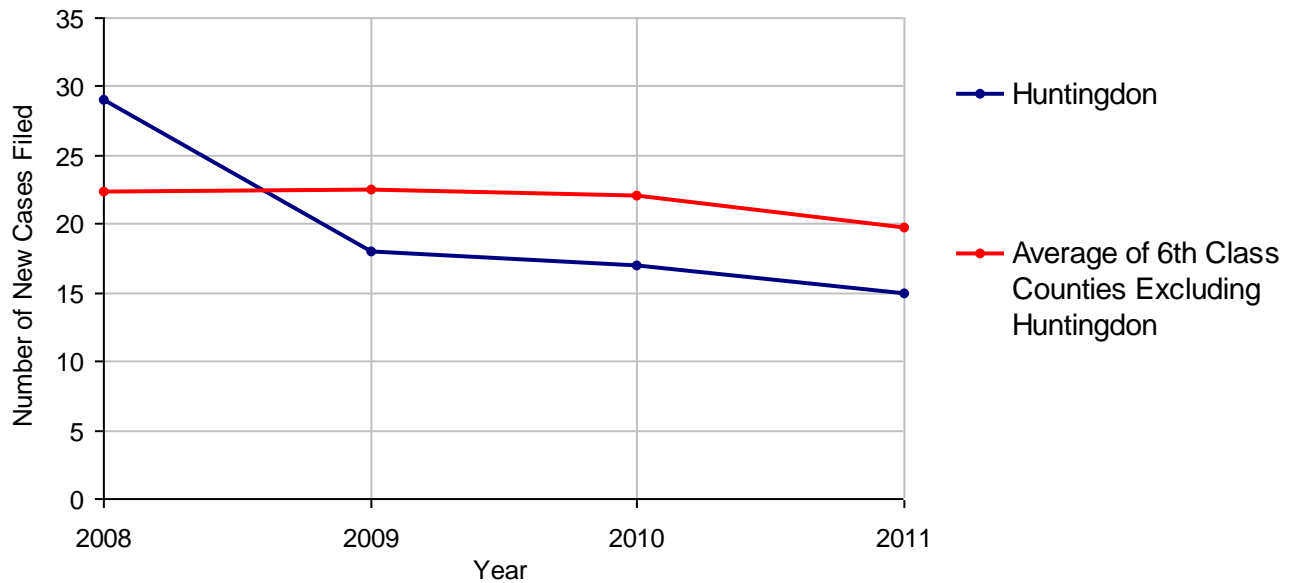
Huntingdon County

2011 Population Estimate: 45,875
 Class of County: 6th
 No. of Common Pleas Court Judgeships: 1



2011 Adoptions		No. of Cases	
Cases Pending 1/1/2011		33	
New Cases Filed in 2011		15	
Cases Available for Processing		48	
Processed By:			
Contested before a Judge	Granted	0	
	Denied	0	
Uncontested	Granted	22	100.0%
	Denied	0	
Other		0	
Cases Processed		22	100.0%
Cases Pending 12/31/2011		26	

Adoptions New Cases Filed, 2008-2011



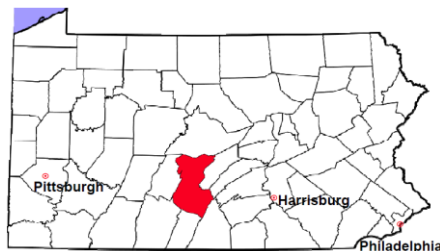
Note: Prior to 2008, each petition was counted as one new case, regardless of the number of children listed on the petition. Starting in 2008, each child listed on a petition is counted as a separate case. Therefore, statistics for the years since 2008 should not be compared to those for the years prior to 2008.

Huntingdon County

2011 Population Estimate: 45,875

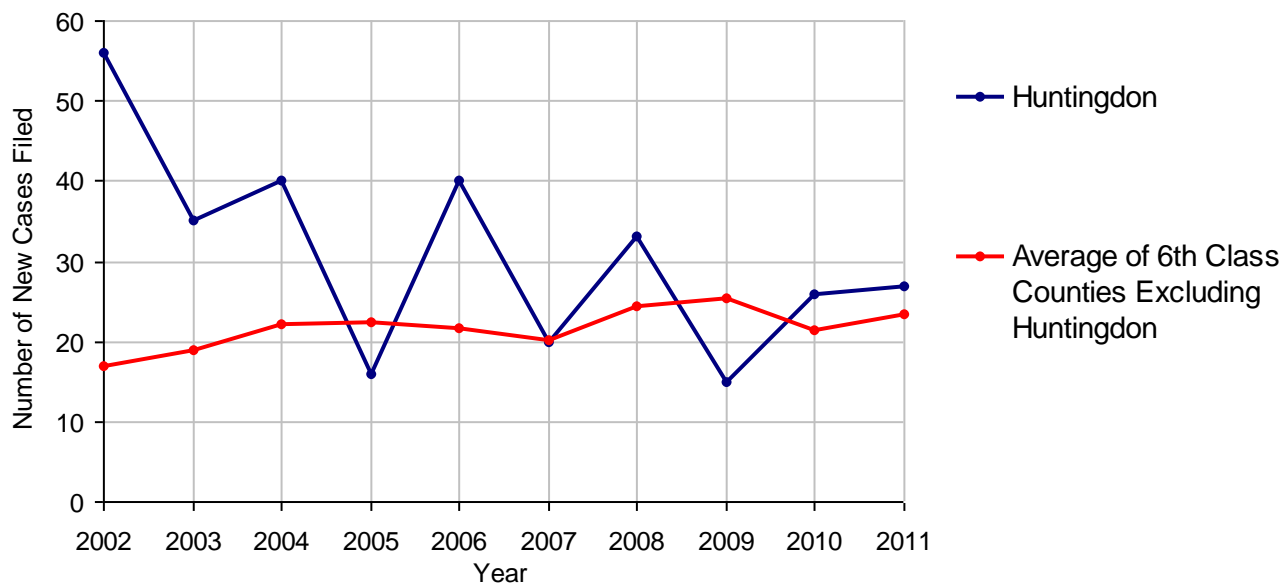
Class of County: 6th

No. of Common Pleas Court Judgeships: 1



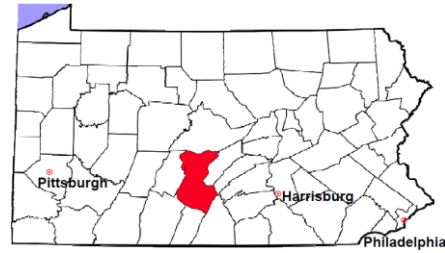
2011 Relinquishments/Terminations	No. of Cases
Cases Pending 1/1/2011	70
New Cases Filed in 2011	27
Cases Available for Processing	97
Processed By:	
Contested before a Judge	0
Uncontested	26 100.0%
Other	0
Cases Processed	26 100.0%
Cases Pending 12/31/2011	71

Relinquishments/Terminations New Cases Filed, 2002-2011



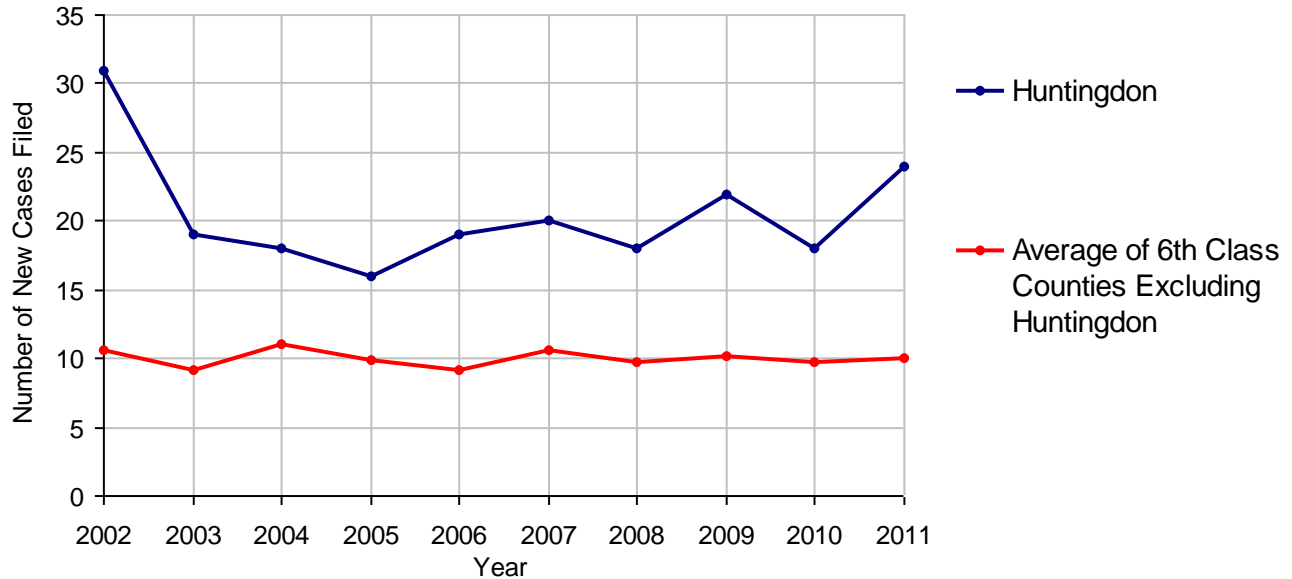
Huntingdon County

2011 Population Estimate: 45,875
 Class of County: 6th
 No. of Common Pleas Court Judgeships: 1



2011 Appointment of Guardians		No. of Cases
Cases Pending 1/1/2011		65
New Cases Filed in 2011		24
Cases Available for Processing		89
Processed By:		
Contested before a Judge	2	9.1%
Uncontested	19	86.4%
Other	1	4.5%
Cases Processed	22	100.0%
Cases Pending 12/31/2011		67

Appointment of Guardians New Cases Filed, 2002-2011

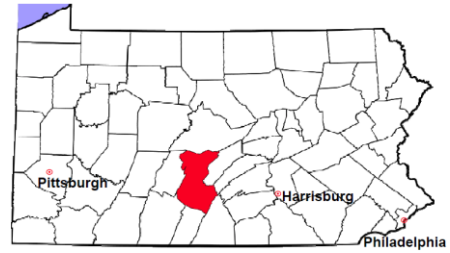


Huntingdon County

2011 Population Estimate: 45,875

Class of County: 6th

No. of Common Pleas Court Judgeships: 1



2011 Jury Activity and Performance Measures

A. Juror Days	526
B. Number Sent to Voir Dire	293
Voir Dire Attendance Rate (B/A * 100)	55.7%
C. Number of Jurors Selected	112
Juror Selection Rate (C/B * 100)	38.2%

Note: In mid-2011, AOPC began utilizing the National Center for State Courts' Jury Managers' Toolbox for collecting jury data. This has resulted in limited jury performance measures being reported for 2011. Additional data will be available in 2012.