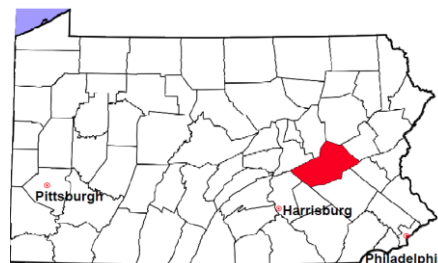


Schuylkill County

2011 Population Estimate: 147,513

Class of County: 4th

No. of Common Pleas Court Judgeships: 6



2011 Criminal	No. of Cases
---------------	--------------

Cases Pending 1/1/2011	1,112
New Cases Filed in 2011	1,823
Reopened Cases	113
Cases Available for Disposition	3,048

Disposed by:

Withdrawn/Dismissed	206	10.6%
ARD	367	18.8%
Guilty Plea	1,251	64.2%
Non-Jury Trial	11	0.6%
Jury Trial	41	2.1%
Inactive	52	2.7%
Other	22	1.1%
Total Cases Disposed	1,950	100.0%

Cases Pending 12/31/2011 **1,098**

Cases Awaiting Sentencing 29

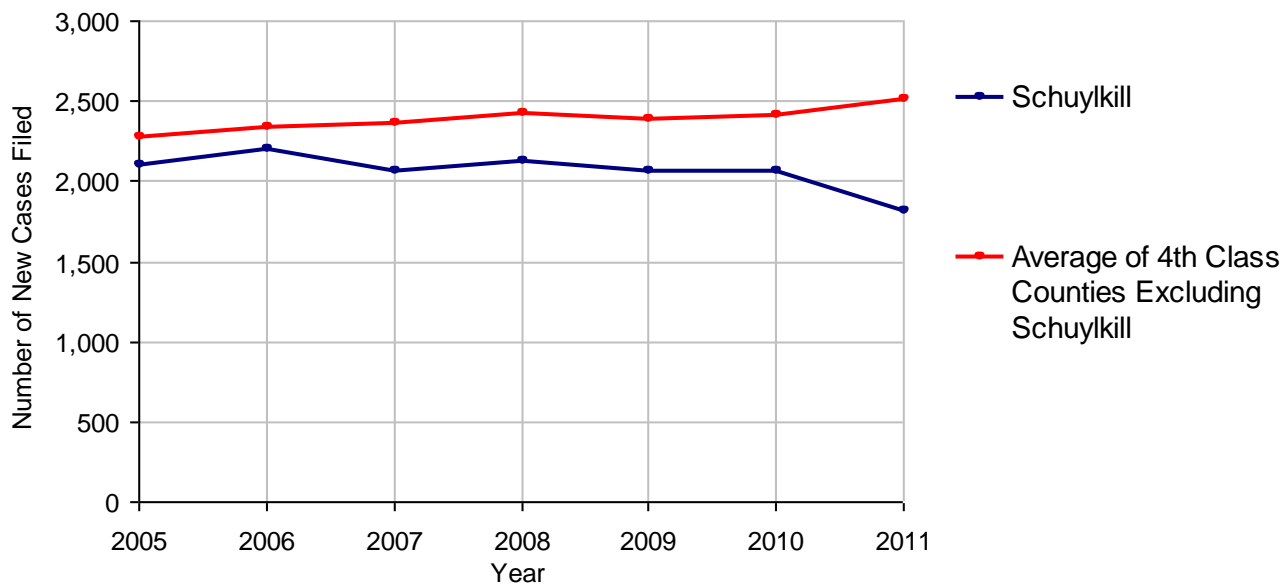
Data provided by CPCMS



Age of Pending Cases as of 12/31/2011

0-60 Days	343	31.2%
61-120 Days	290	26.4%
121-180 Days	237	21.6%
181-240 Days	89	8.1%
241-300 Days	79	7.2%
301-360 Days	34	3.1%
Over 360 Days	26	2.4%
Total	1,098	100.0%

Criminal New Cases Filed, 2005-2011



Schuylkill County

2011 Population Estimate: 147,513

Class of County: 4th

No. of Common Pleas Court Judgeships: 6



2011 Criminal - New Cases by Case Type



Case Type	Felony	Misdemeanor	Summary /Ungraded	Total
Person	86	209	0	295
Property	240	269	0	509
Drug	115	167	0	282
Weapon	13	17	0	30
Public Order	80	142	1	223
Motor Vehicle - DWI/DUI	0	471	0	471
Motor Vehicle - Other	0	12	0	12
Other	0	1	0	1
Total	534	1,288	1	1,823
	29.3%	70.7%	0.1%	100.0%

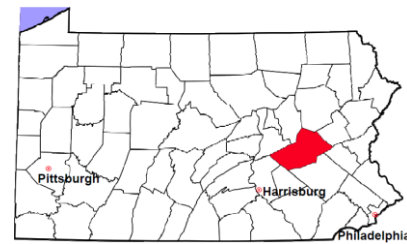
Data provided by CPCMS

Schuylkill County

2011 Population Estimate: 147,513

Class of County: 4th

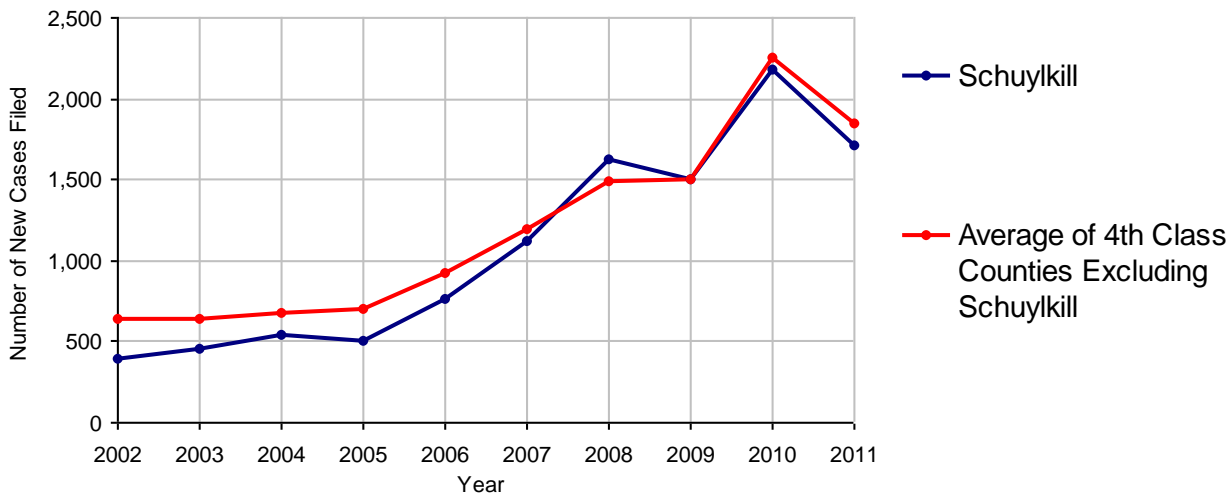
No. of Common Pleas Court Judgeships: 6



2011 Civil	Civil Action	Other	Total
Cases Pending 1/1/2011	3,410	8,610	12,020
Docketed Cases	1,148	558	1,706
Arbitration Appeals	0	0	0
Transferred In	1	2	3
Returned to Active	6	3	9
Cases Available for Processing	4,565	9,173	13,738
Disposed By:			
Default Judgments	505	160	665
Cases Decided by Arbitration Board	41	17	58
Dispositive Motions	12	21	33
Settlements	540	147	687
Moved to Inactive Status	146	2,095	2,241
Transferred/Withdrawn	76	33	109
Pa.R.J.A. 1901 Administrative Purge	212	107	319
Other	113	4,603	4,716
Jury Trial	4	1	5
Non-Jury Trial	2	3	5
Total Cases Disposed	1,651	7,187	8,838
Cases Pending 12/31/2011	2,914	1,986	4,900

Age of Pending Cases as of 12/31/2011 (Civil Action Only)		
0-6 months	430	14.8%
7-12 months	282	9.7%
13-18 months	260	8.9%
19-24 months	237	8.1%
25-30 months	228	7.8%
31-36 months	170	5.8%
37-42 months	151	5.2%
43-48 months	102	3.5%
49-54 months	72	2.5%
55-60 months	69	2.4%
61-66 months	60	2.1%
67-72 months	37	1.3%
Over 72 months	816	28.0%
Total	2,914	100.0%

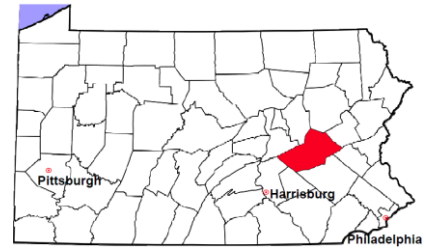
Docketed Cases, 2002-2011



Note: Prior to June 2010, docketed cases under the "Other" category were not reported. The reporting of these cases starting from June 2010 may contribute to an increase in docketed cases from 2009 to 2010.

Schuylkill County

2011 Population Estimate: 147,513
 Class of County: 4th
 No. of Common Pleas Court Judgeships: 6



2011 Civil - Docketed Cases Listed by Case Type

TORT (does not include mass tort)

Intentional	9
Malicious Prosecution	0
Motor Vehicle	118
Nuisance	2
Premise Liability	35
Product Liability	0
Slander/Libel/Defamation	1
Other	128

MASS TORT

Asbestos	0
Tobacco	0
Toxic Tort - DES	0
Toxic Tort - Implant	0
Toxic Waste	0
Other	6

PROFESSIONAL LIABILITY

Dental	0
Legal	7
Medical Malpractice	15
Other	2

CONTRACT

(does not include judgments)

Buyer Plaintiff	13
Debt Collection:	
Credit Card	540
Other	156
Employment Dispute:	
Discrimination	0
Other	5
Other	90

REAL PROPERTY

Ejectment*	24
Eminent Domain/ Condemnation*	5
Ground Rent	2
Landlord/Tenant Dispute	19
Mortgage Forclosures:	
Residential*	311
Commercial*	5
Partition of Real Property*	1
Quiet Title*	9
Other*	9

CIVIL APPEALS

Administrative Agencies

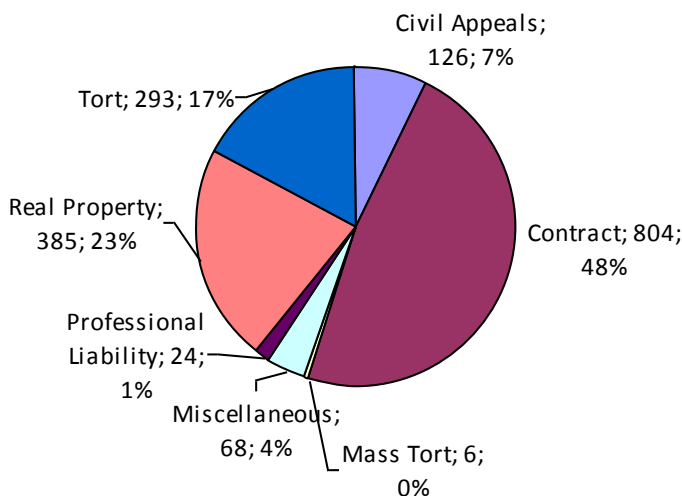
Board of Assessment*	54
Board of Elections*	0
Dept. of Transportation*	41
Zoning Board*	7
Statutory Appeal - Other*	2
Other*	22

MISCELLANEOUS

Common Law/ Statutory Arbitration*	0
Declaratory Judgment*	5
Mandamus*	2
Non-Domestic Relations Restraining Order*	0
Quo Warranto*	0
Replevin*	10
Other*	51

TOTAL DOCKETED CASES:
1,706

* Civil Other



Of the Docketed Cases:

Pro Se Filings:	44	2.6%
Class Action Suits:	0	
MDJ Appeals:	103	6.0%

Schuylkill County

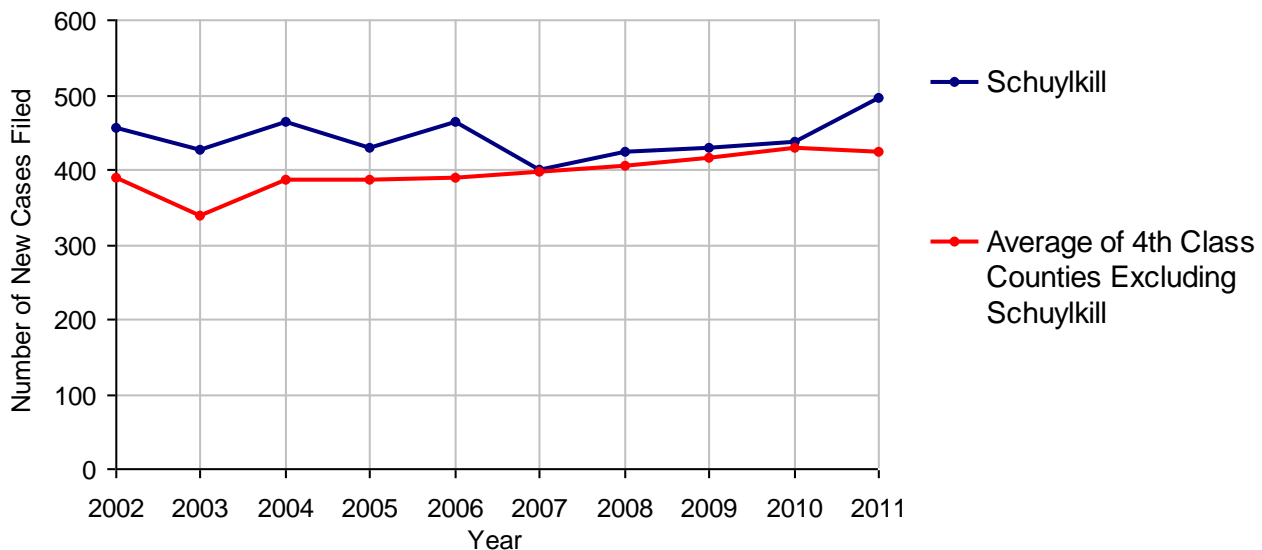
2011 Population Estimate: 147,513
 Class of County: 4th
 No. of Common Pleas Court Judgeships: 6



2011 Protection From Abuse

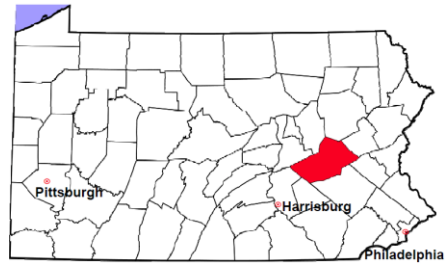
	No. of Petitions
Cases Pending 1/1/2011	26
New Cases Filed in 2011	495
<i>Of these, Petitions Requesting Temporary Orders: 495 (100.0%)</i>	
<i>Temporary Orders DENIED: 38 (7.7%), Temporary Orders GRANTED: 457 (92.3%)</i>	
Cases Available for Processing	521
Processed By:	
Temporary Order DENIED After Ex Parte Hearing and No Evidentiary Hearing Scheduled	34 6.9%
Temporary Order DISMISSED After Evidentiary Hearing and No Final Order Entered	34 6.9%
Final Order DENIED After Evidentiary Hearing Before a Judge	28 5.7%
Final Order GRANTED After Evidentiary Hearing Before a Judge	86 17.4%
Plaintiff Did Not Appear For Evidentiary Hearing	83 16.8%
Final Order by STIPULATION OR AGREEMENT Between the Parties	116 23.5%
Petition WITHDRAWN by Plaintiff	106 21.5%
TRANSFERRED to Another Jurisdiction	0
DECEASED Party	0
Other	7 1.4%
Cases Processed	494 100.0%
Cases Pending 12/31/2011	27

PFA New Cases Filed, 2002-2011

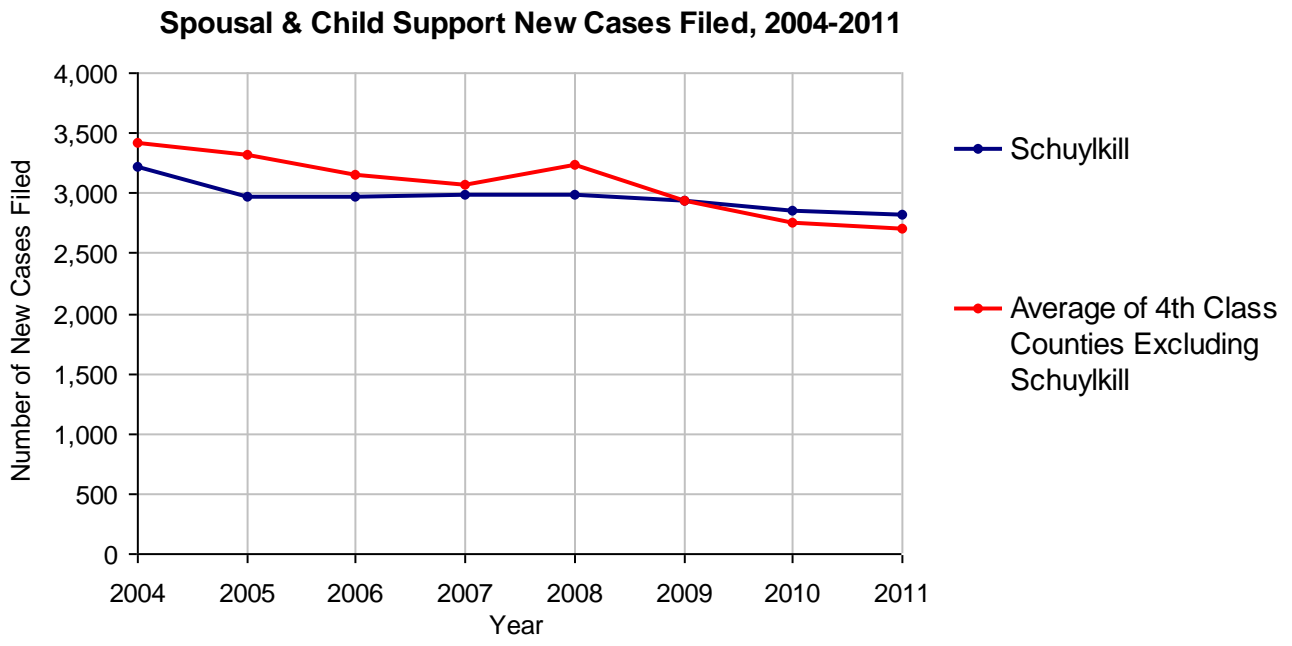


Schuylkill County

2011 Population Estimate: 147,513
 Class of County: 4th
 No. of Common Pleas Court Judgeships: 6



2011 Spousal & Child Support	No. of Petitions	
Cases Pending 1/1/2011	539	
New Cases Filed in 2011	2,819	
Dockets Transferred In (+)	50	
Dockets Transferred Out (-)	24	
Cases Available for Processing	3,384	
Processed By:		
Judge	0	
Intake Officer	2,779	98.7%
Hearing Officer	38	1.3%
Other	0	
Cases Processed	2,817	100.0%
Cases Pending 12/31/2011	567	

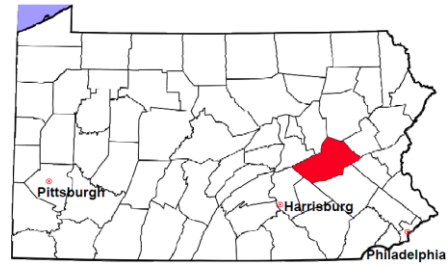


Schuylkill County

2011 Population Estimate: 147,513

Class of County: 4th

No. of Common Pleas Court Judgeships: 6

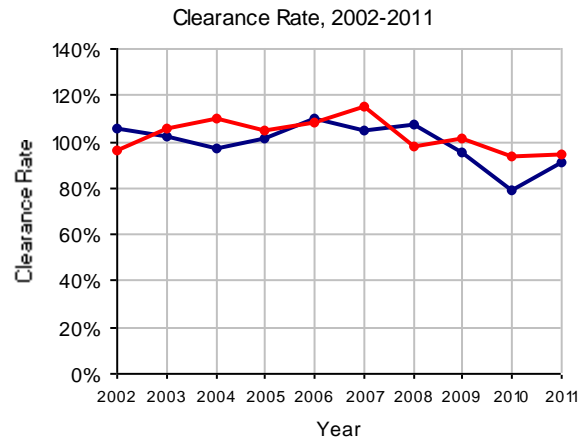
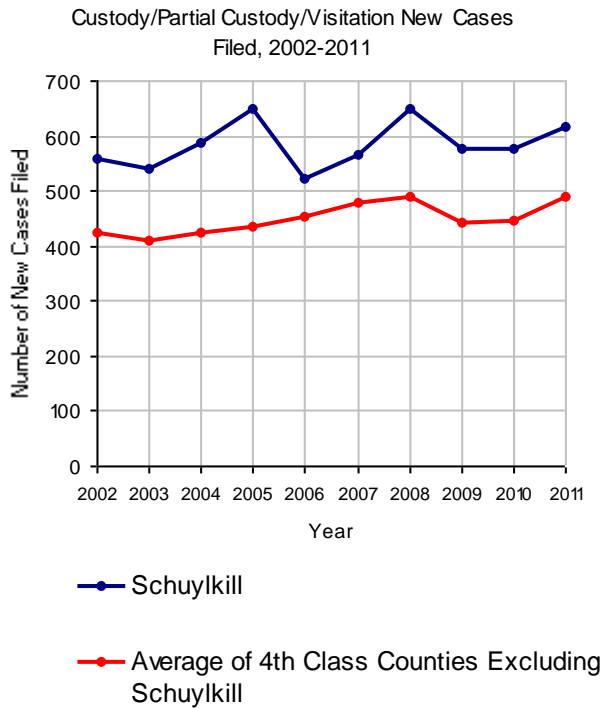


2011 Custody/Partial Custody/Visitation

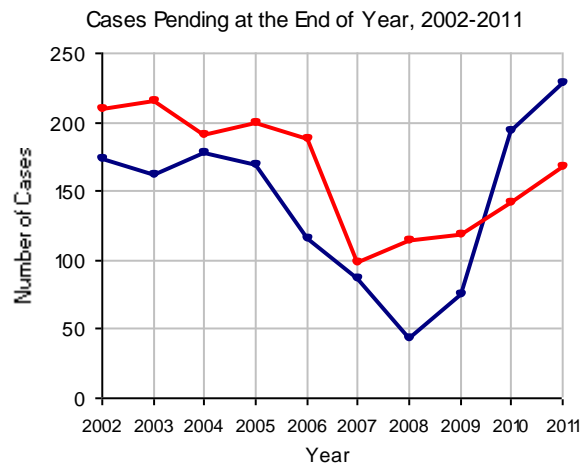
No. of
Petitions

Cases Pending 1/1/2011	171 (R)
New Cases Filed in 2011	616
Cases Available for Processing	787
Processed By:	
Judge	199 35.6%
Non-Judicial Officer	359 64.2%
Other	1 0.2%
Cases Processed	559 100.0%
Cases Pending 12/31/2011	228

(R) - Revised

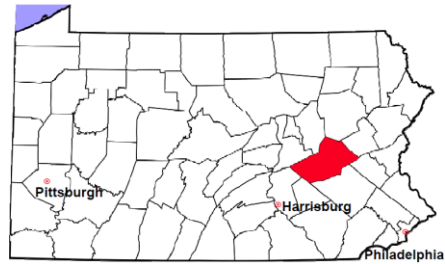


Note: Clearance Rate = Cases Processed / New Cases Filed



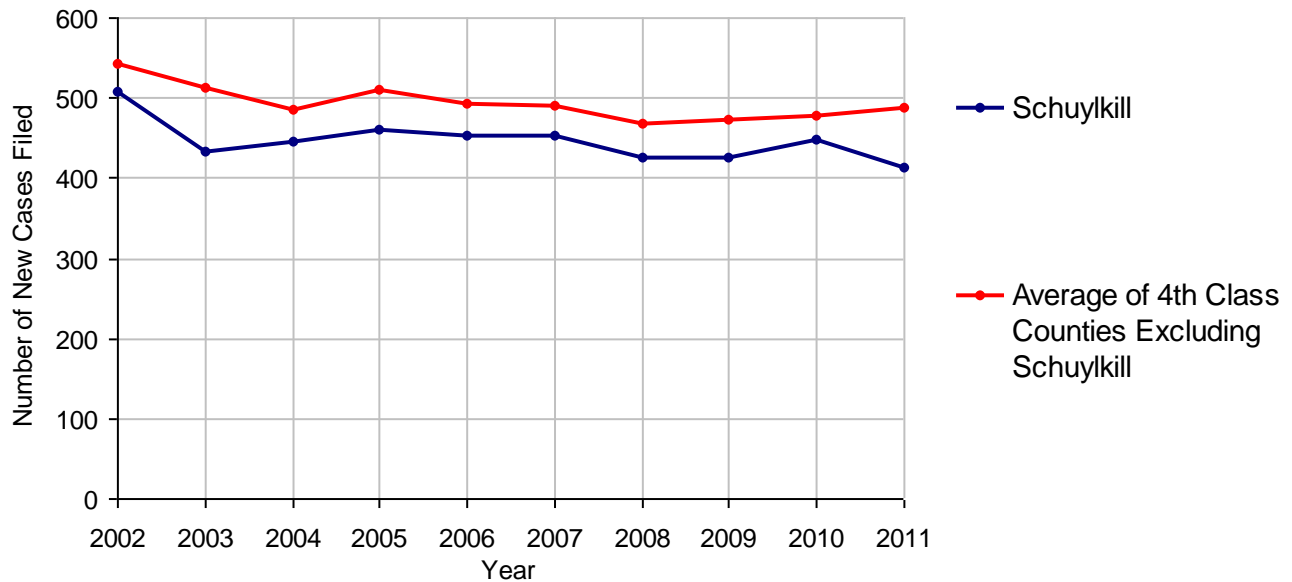
Schuylkill County

2011 Population Estimate: 147,513
 Class of County: 4th
 No. of Common Pleas Court Judgeships: 6



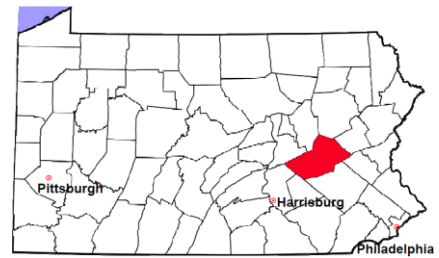
2011 Divorce	No. of Petitions	
Cases Pending 1/1/2011	867	
New Cases Filed in 2011	414	
Cases Available for Processing	1,281	
Processed By:		
Contested Before a Judge	21	4.8%
Contested Before a Master	31	7.1%
Uncontested	316	72.6%
Other	67	15.4%
Cases Processed	435	100.0%
Cases Pending 12/31/2011	846	

Divorce New Cases Filed, 2002-2011



Schuylkill County

2011 Population Estimate: 147,513
 Class of County: 4th
 No. of Common Pleas Court Judgeships: 6



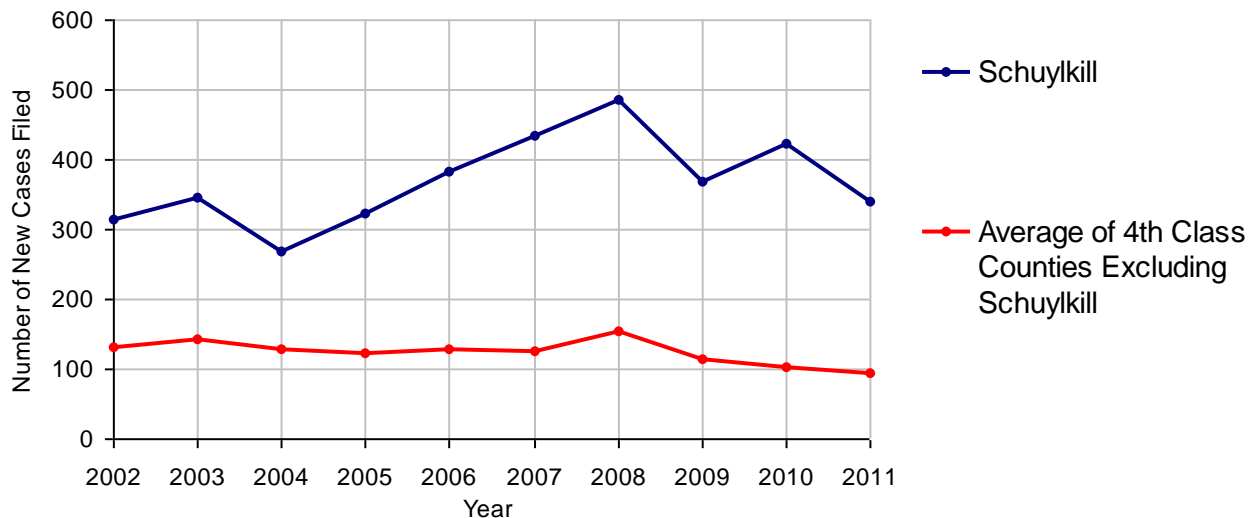
2011 Juvenile Dependency - Active Dependent Inventory



	Abuse/ Neglect	Status Offenses	Total
Cases Pending 1/1/2011	28	0	28
New Petitions Filed in 2011	341	0	341
Other	0	0	0
Total Petitions Available for Processing	369	0	369
Processed by:			
Adjudicated Dependent			
Judge	261	0	261
Master	0	0	0
Adjudicated NOT Dependent			
Judge	14	0	14
Master	0	0	0
Withdrawn/Dismissed/Inactive	74	0	74
Other	0	0	0
Total Petitions Processed	349	0	349
Cases Pending 12/31/2011	20	0	20

Data provided by CPCMS

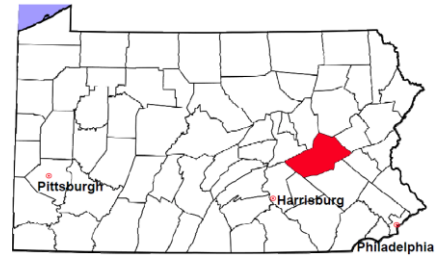
Abuse/Neglect and Status Offenses New Cases Filed, 2002-2011



Note: Dependency data for 2002-2010 were collected manually. Dependency data for 2011 were provided by CPCMS.

Schuylkill County

2011 Population Estimate: 147,513
 Class of County: 4th
 No. of Common Pleas Court Judgeships: 6



2011 Juvenile Dependency - Adjudicated Dependent Inventory

	Abuse/ Neglect	Status Offenses	Total	
Cases Pending 1/1/2011	472	1	473	
New Adjudicated Dependent Cases	261	0	261	
Other	14	0	14	
Total Adjudicated Dependent Cases	747	1	748	
<u>Court Supervision Terminated:</u>				
Family Reunification	26	0	26	8.5%
Adoption	29	0	29	9.5%
Placement with a Relative/Guardian	191	0	191	62.4%
Aged Out	26	0	26	8.5%
Other Permanency Outcomes*	0	0	0	
Other**	34	0	34	11.1%
Total Adjudicated Dependent Cases Terminated	306	0	306	100.0%
Cases Pending 12/31/2011	441	1	442	

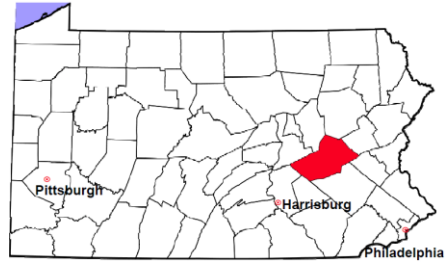
Data provided by CPCMS

* Other Permanency Outcomes include: adjudicated delinquent, death due to natural causes, emancipation, permanent living arrangement, and parent has come forward.

** Other includes cases where Court Supervision is terminated due to transfer out of jurisdiction, withdrawal and administrative closures.

Schuykill County

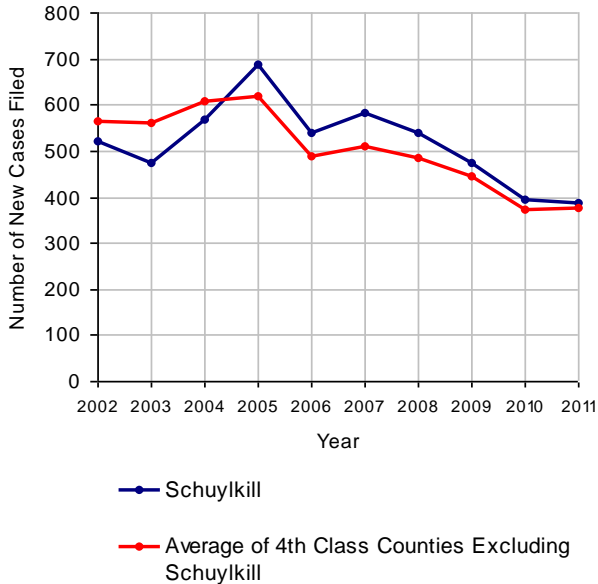
2011 Population Estimate: 147,513
 Class of County: 4th
 No. of Common Pleas Court Judgeships: 6



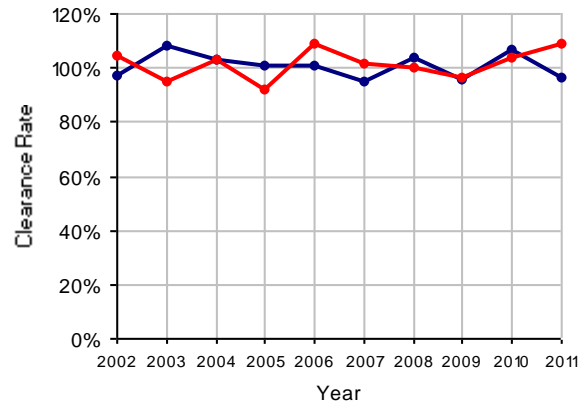
2011 Juvenile Delinquency

	No. of Cases
Cases Pending 1/1/2011	35
New Cases Filed in 2011	388
Cases Available for Processing	423
Processed By:	
Judge	144 38.6%
Non-Judicial Officer	217 58.2%
Other	12 3.2%
Cases Processed	373 100.0%
Cases Pending 12/31/2011	50

Juvenile Delinquency New Cases Filed, 2002-2011

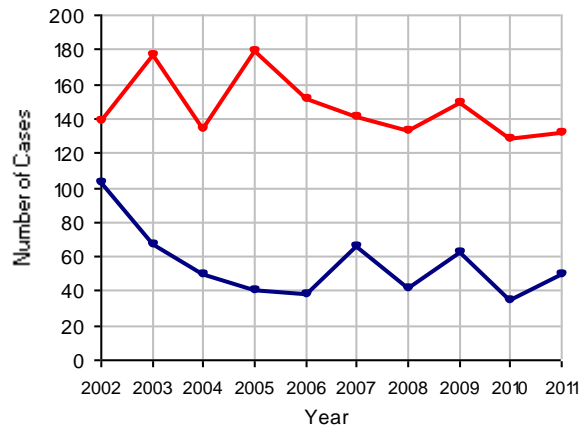


Clearance Rate, 2002-2011



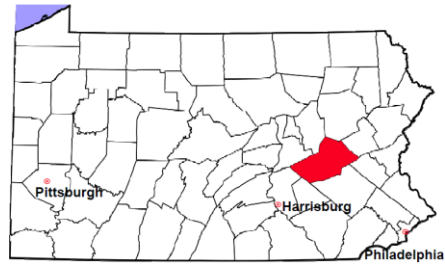
Note: Clearance Rate = Cases Processed / New Cases Filed

Cases Pending at the End of Year, 2002-2011



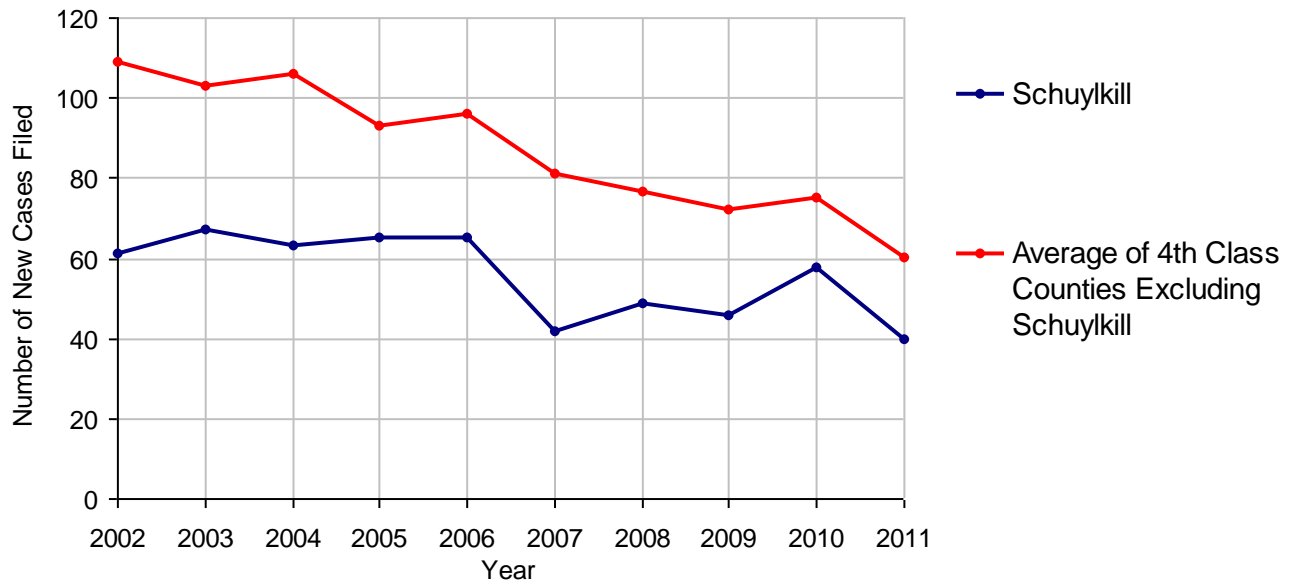
Schuylkill County

2011 Population Estimate: 147,513
 Class of County: 4th
 No. of Common Pleas Court Judgeships: 6



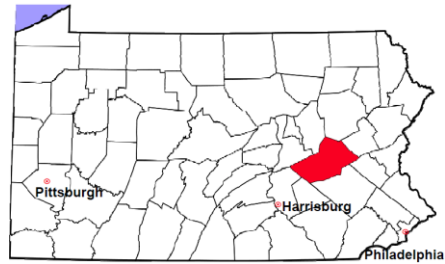
2011 Accounts	No. of Cases
Cases Pending 1/1/2011	14
New Cases Filed in 2011	40
Cases Available for Processing	54
Processed By:	
Contested before a Judge	4 8.3%
Contested before a Non-judicial Officer	0
Uncontested	38 79.2%
Other	6 12.5%
Cases Processed	48 100.0%
Cases Pending 12/31/2011	6

Accounts New Cases Filed, 2002-2011



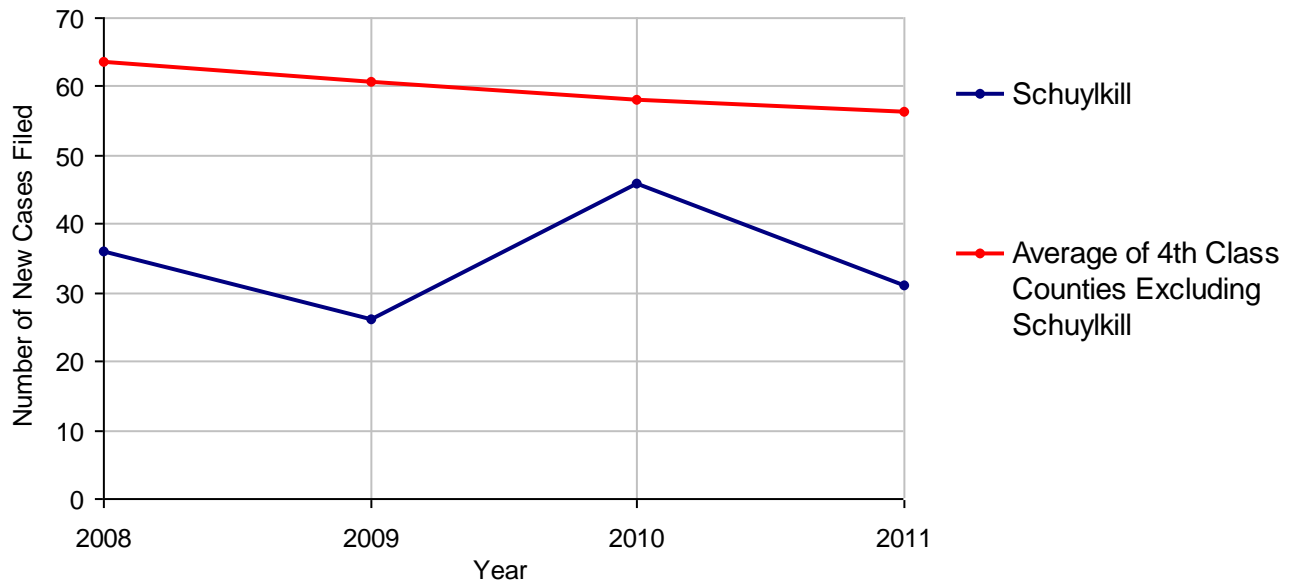
Schuylkill County

2011 Population Estimate: 147,513
 Class of County: 4th
 No. of Common Pleas Court Judgeships: 6



2011 Adoptions		No. of Cases	
Cases Pending 1/1/2011		6	
New Cases Filed in 2011		31	
Cases Available for Processing		37	
Processed By:			
Contested before a Judge	Granted	0	
	Denied	0	
Uncontested	Granted	29	93.5%
	Denied	1	3.2%
Other		1	3.2%
Cases Processed		31	100.0%
Cases Pending 12/31/2011		6	

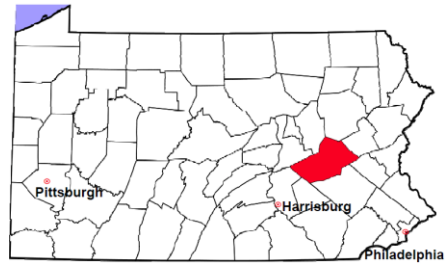
Adoptions New Cases Filed, 2008-2011



Note: Prior to 2008, each petition was counted as one new case, regardless of the number of children listed on the petition. Starting in 2008, each child listed on a petition is counted as a separate case. Therefore, statistics for the years since 2008 should not be compared to those for the years prior to 2008.

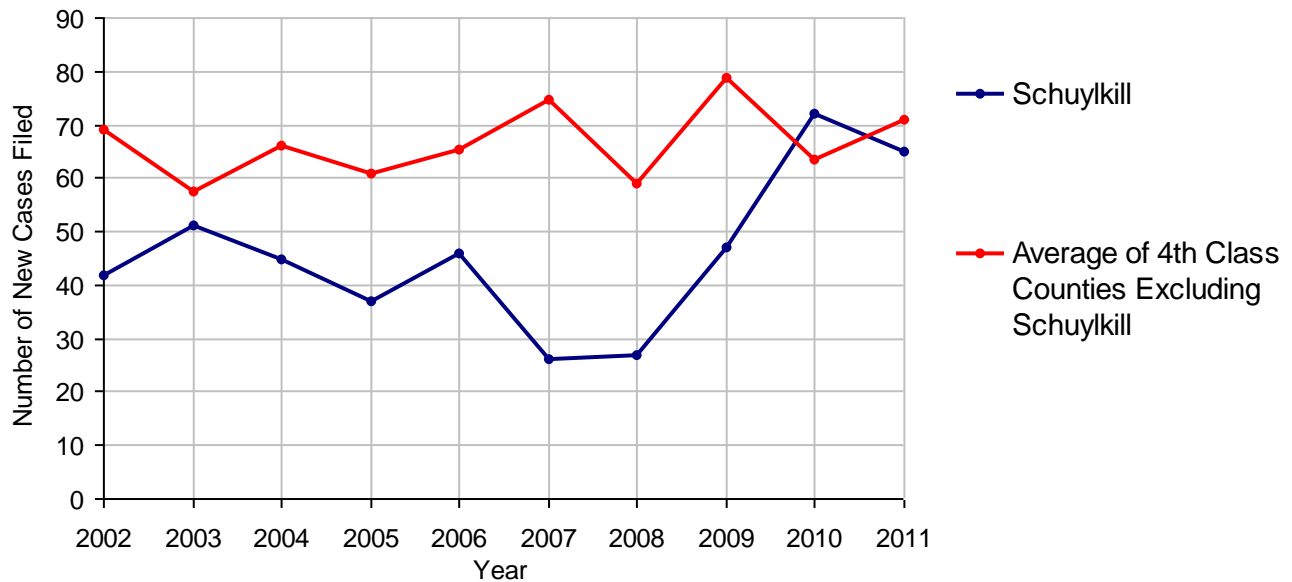
Schuylkill County

2011 Population Estimate: 147,513
 Class of County: 4th
 No. of Common Pleas Court Judgeships: 6



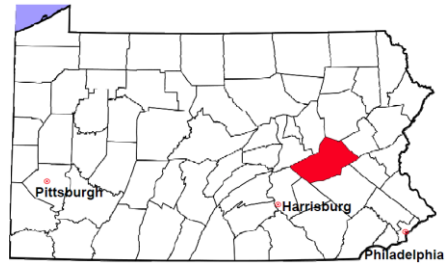
2011 Relinquishments/Terminations	No. of Cases
Cases Pending 1/1/2011	21
New Cases Filed in 2011	65
Cases Available for Processing	86
Processed By:	
Contested before a Judge	10 13.5%
Uncontested	62 83.8%
Other	2 2.7%
Cases Processed	74 100.0%
Cases Pending 12/31/2011	12

Relinquishments/Terminations New Cases Filed, 2002-2011



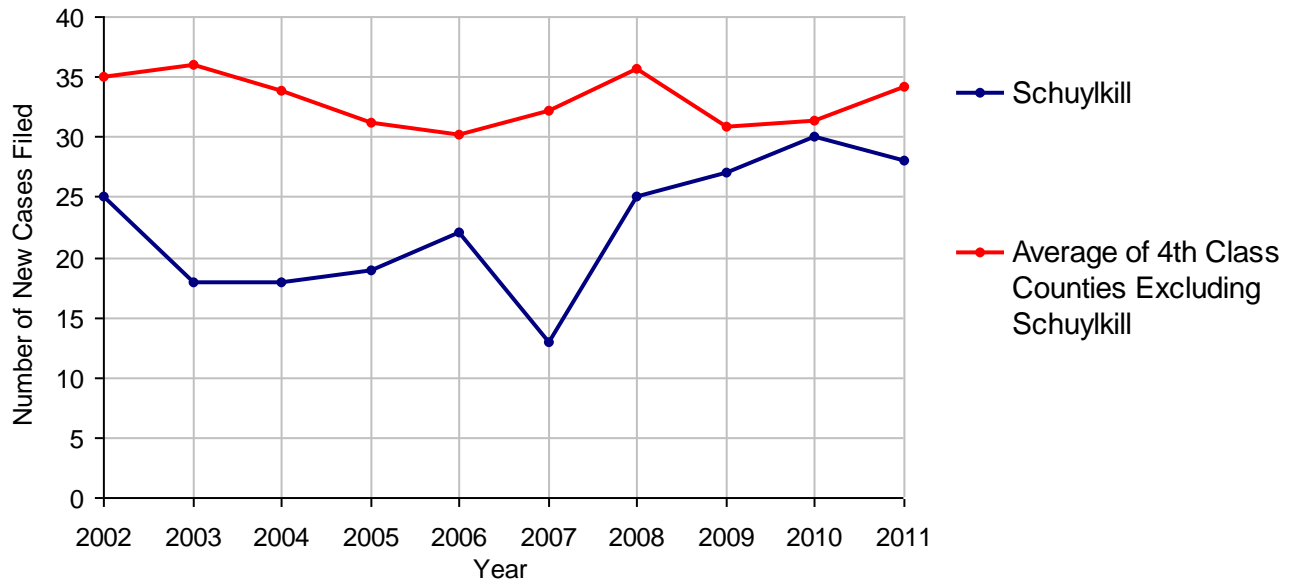
Schuylkill County

2011 Population Estimate: 147,513
 Class of County: 4th
 No. of Common Pleas Court Judgeships: 6



2011 Appointment of Guardians	No. of Cases
Cases Pending 1/1/2011	2
New Cases Filed in 2011	28
Cases Available for Processing	30
Processed By:	
Contested before a Judge	1 4.0%
Uncontested	18 72.0%
Other	6 24.0%
Cases Processed	25 100.0%
Cases Pending 12/31/2011	5

Appointment of Guardians New Cases Filed, 2002-2011

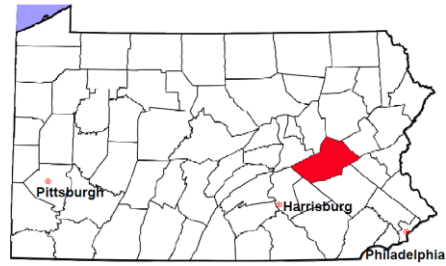


Schuylkill County

2011 Population Estimate: 147,513

Class of County: 4th

No. of Common Pleas Court Judgeships: 6



2011 Jury Activity and Performance Measures

A. Juror Days	2,514	
B. Number Sent to Voir Dire	4,255	
Voir Dire Attendance Rate (B/A * 100)		169.3%
C. Number of Jurors Selected	1,006	
Juror Selection Rate (C/B * 100)		23.6%

Note: In mid-2011, AOPC began utilizing the National Center for State Courts' Jury Managers' Toolbox for collecting jury data. This has resulted in limited jury performance measures being reported for 2011. Additional data will be available in 2012.