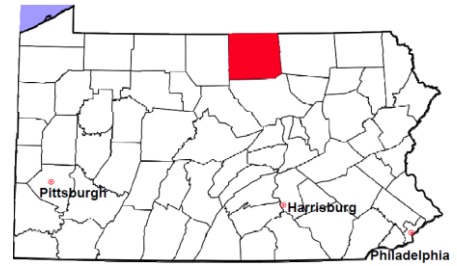


# Tioga County

2011 Population Estimate: 42,419  
 Class of County: 6th  
 No. of Common Pleas Court Judgeships: 1



## 2011 Criminal No. of Cases

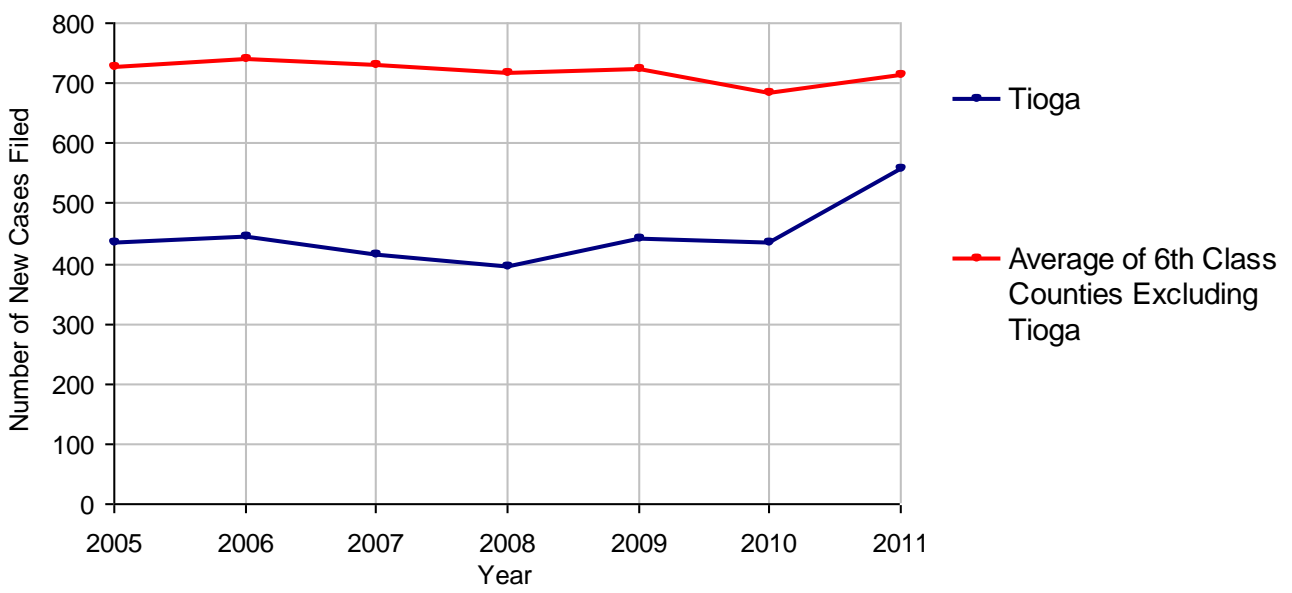
Cases Pending 1/1/2011	165
New Cases Filed in 2011	561
Reopened Cases	36
<b>Cases Available for Disposition</b>	<b>762</b>
<b>Disposed by:</b>	
Withdrawn/Dismissed	38 7.8%
ARD	202 41.6%
Guilty Plea	186 38.4%
Non-Jury Trial	0
Jury Trial	2 0.4%
Inactive	5 1.0%
Other	52 10.7%
<b>Total Cases Disposed</b>	<b>485 100.0%</b>
<b>Cases Pending 12/31/2011</b>	<b>277</b>
Cases Awaiting Sentencing	12



Age of Pending Cases as of 12/31/2011		
0-60 Days	109	39.4%
61-120 Days	79	28.5%
121-180 Days	41	14.8%
181-240 Days	23	8.3%
241-300 Days	8	2.9%
301-360 Days	5	1.8%
Over 360 Days	12	4.3%
<b>Total</b>	<b>277</b>	<b>100.0%</b>

Data provided by CPCMS

**Criminal New Cases Filed, 2005-2011**

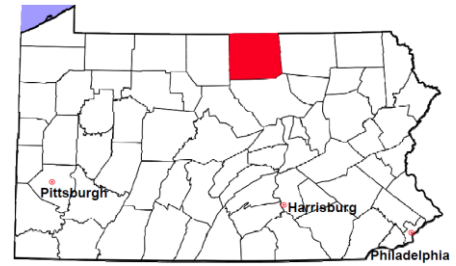


# Tioga County

2011 Population Estimate: 42,419

Class of County: 6th

No. of Common Pleas Court Judgeships: 1



## 2011 Criminal - New Cases by Case Type

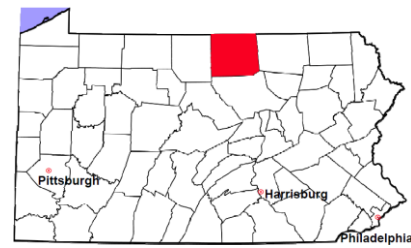


Case Type	Felony	Misdemeanor	Summary /Ungraded	Total
Person	27	52	0	79
Property	86	74	1	161
Drug	7	29	0	36
Weapon	3	3	0	6
Public Order	11	35	0	46
Motor Vehicle - DWI/DUI	0	230	1	231
Motor Vehicle - Other	1	1	0	2
Other	0	0	0	0
<b>Total</b>	<b>135</b>	<b>424</b>	<b>2</b>	<b>561</b>
	<b>24.1%</b>	<b>75.6%</b>	<b>0.4%</b>	<b>100.0%</b>

Data provided by CPCMS

# Tioga County

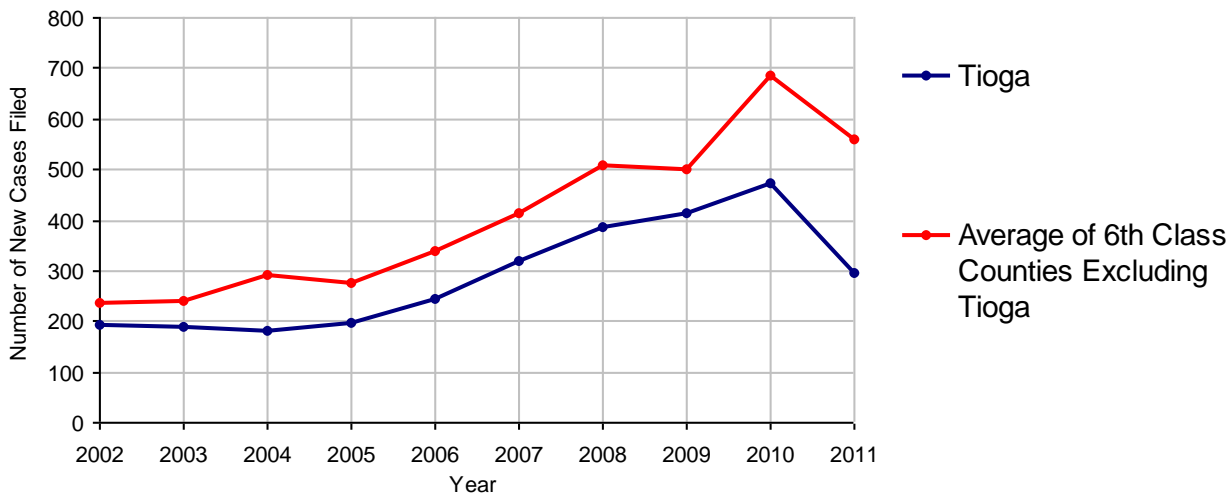
2011 Population Estimate: 42,419  
 Class of County: 6th  
 No. of Common Pleas Court Judgeships: 1



<b>2011 Civil</b>	<b>Civil Action</b>	<b>Other</b>	<b>Total</b>
Cases Pending 1/1/2011	2,154	1,222	3,376
Docketed Cases	180	117	297
Arbitration Appeals	1	0	1
Transferred In	0	0	0
Returned to Active	0	0	0
<b>Cases Available for Processing</b>	<b>2,335</b>	<b>1,339</b>	<b>3,674</b>
Disposed By:			
Default Judgments	83	11	94
Cases Decided by Arbitration Board	10	5	15
Dispositive Motions	54	5	59
Settlements	7	0	7
Moved to Inactive Status	0	0	0
Transferred/Withdrawn	1	0	1
Pa.R.J.A. 1901 Administrative Purge	0	0	0
Other	0	0	0
Jury Trial	1	0	1
Non-Jury Trial	3	0	3
<b>Total Cases Disposed</b>	<b>159</b>	<b>21</b>	<b>180</b>
<b>Cases Pending 12/31/2011</b>	<b>2,176</b>	<b>1,318</b>	<b>3,494</b>

Age of Pending Cases as of 12/31/2011 (Civil Action Only)		
0-6 months	339	15.6%
7-12 months	218	10.0%
13-18 months	195	9.0%
19-24 months	195	9.0%
25-30 months	133	6.1%
31-36 months	118	5.4%
37-42 months	58	2.7%
43-48 months	68	3.1%
49-54 months	70	3.2%
55-60 months	71	3.3%
61-66 months	111	5.1%
67-72 months	172	7.9%
Over 72 months	428	19.7%
<b>Total</b>	<b>2,176</b>	<b>100.0%</b>

**Docketed Cases, 2002-2011**



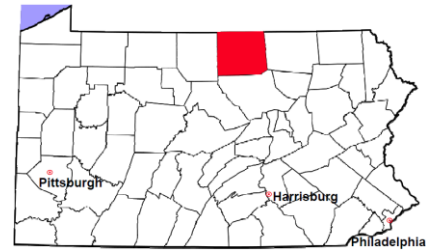
Note: Prior to June 2010, docketed cases under the "Other" category were not reported. The reporting of these cases starting from June 2010 may contribute to an increase in docketed cases from 2009 to 2010.

# Tioga County

2011 Population Estimate: 42,419

Class of County: 6th

No. of Common Pleas Court Judgeships: 1



## 2011 Civil - Docketed Cases Listed by Case Type

### TORT (does not include mass tort)

Intentional	1
Malicious Prosecution	1
Motor Vehicle	20
Nuisance	0
Premise Liability	5
Product Liability	1
Slander/Libel/Defamation	0
Other	3

### MASS TORT

Asbestos	0
Tobacco	0
Toxic Tort - DES	0
Toxic Tort - Implant	0
Toxic Waste	0
Other	0

### PROFESSIONAL LIABILITY

Dental	0
Legal	1
Medical Malpractice	0
Other	0

### CONTRACT

(does not include judgments)

Buyer Plaintiff	3
Debt Collection:	
Credit Card	92
Other	45
Employment Dispute:	
Discrimination	1
Other	1
Other	5

### REAL PROPERTY

Ejectment*	6
Eminent Domain/ Condemnation*	0
Ground Rent	0
Landlord/Tenant Dispute	1
Mortgage Forclosure:	
Residential*	30
Commercial*	0
Partition of Real Property*	4
Quiet Title*	18
Other*	6

### CIVIL APPEALS

*Administrative Agencies*

Board of Assessment*	0
Board of Elections*	0
Dept. of Transportation*	7
Zoning Board*	0
Statutory Appeal - Other*	3
Other*	3

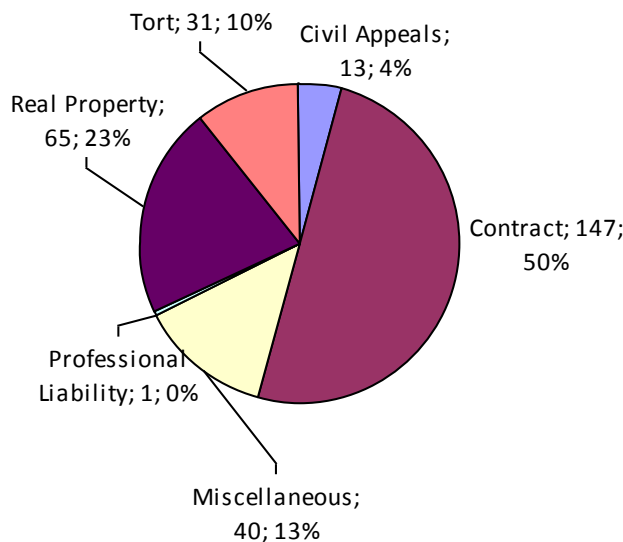
### MISCELLANEOUS

Common Law/ Statutory Arbitration*	1
Declaratory Judgment*	8
Mandamus*	0
Non-Domestic Relations Restraining Order*	1
Quo Warranto*	0
Replevin*	5
Other*	25

### **TOTAL DOCKETED CASES:**

**297**

\* Civil Other



### **Of the Docketed Cases:**

Pro Se Filings:	0
Class Action Suits:	0
MDJ Appeals:	3 1.0%

# Tioga County

2011 Population Estimate: 42,419  
 Class of County: 6th  
 No. of Common Pleas Court Judgeships: 1



## 2011 Protection From Abuse

**No. of  
Petitions**

Cases Pending 1/1/2011	10
New Cases Filed in 2011	43

*Of these, Petitions Requesting Temporary Orders: 43 (100.0%)  
 Temporary Orders DENIED: 0 (0.0%), Temporary Orders GRANTED: 43 (100.0%)*

### Cases Available for Processing 53

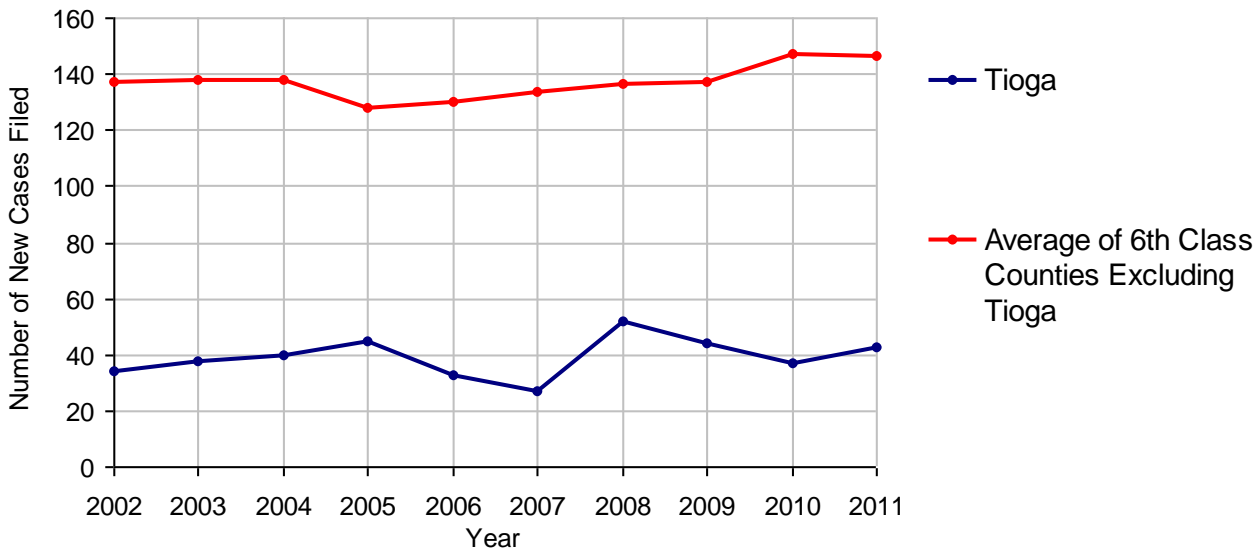
Processed By:

Temporary Order DENIED After Ex Parte Hearing and No Evidentiary Hearing Scheduled	0	
Temporary Order DISMISSED After Evidentiary Hearing and No Final Order Entered	0	
Final Order DENIED After Evidentiary Hearing Before a Judge	0	
Final Order GRANTED After Evidentiary Hearing Before a Judge	0	
Plaintiff Did Not Appear For Evidentiary Hearing	0	
Final Order by STIPULATION OR AGREEMENT Between the Parties	27	58.7%
Petition WITHDRAWN by Plaintiff	19	41.3%
TRANSFERRED to Another Jurisdiction	0	
DECEASED Party	0	
Other	0	

### Cases Processed 46 100.0%

### Cases Pending 12/31/2011 7

**PFA New Cases Filed, 2002-2011**

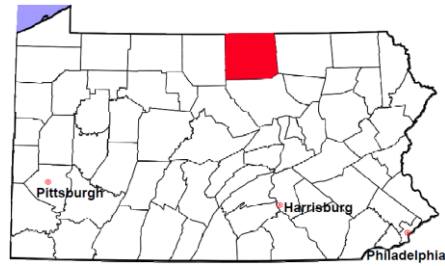


# Tioga County

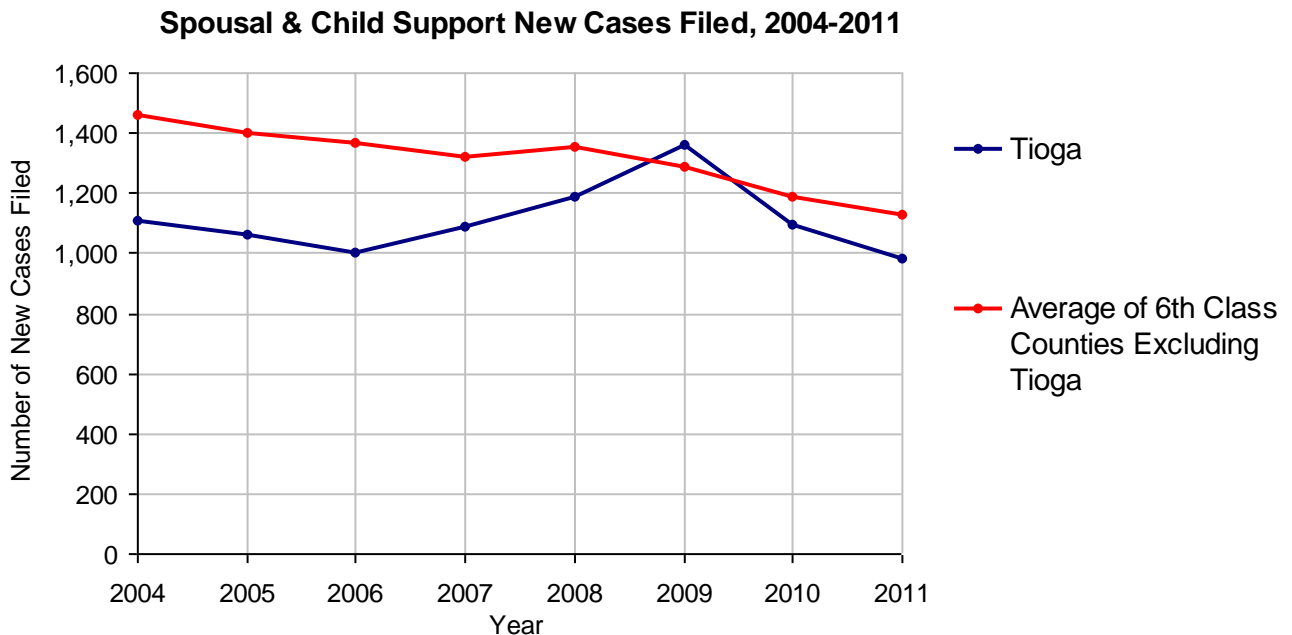
2011 Population Estimate: 42,419

Class of County: 6th

No. of Common Pleas Court Judgeships: 1



<b>2011 Spousal &amp; Child Support</b>	<b>No. of Petitions</b>	
Cases Pending 1/1/2011	92	
New Cases Filed in 2011	982	
Dockets Transferred In (+)	8	
Dockets Transferred Out (-)	14	
<b>Cases Available for Processing</b>	<b>1,068</b>	
Processed By:		
Judge	28	2.8%
Intake Officer	968	97.2%
Hearing Officer	0	
Other	0	
<b>Cases Processed</b>	<b>996</b>	<b>100.0%</b>
<b>Cases Pending 12/31/2011</b>	<b>72</b>	

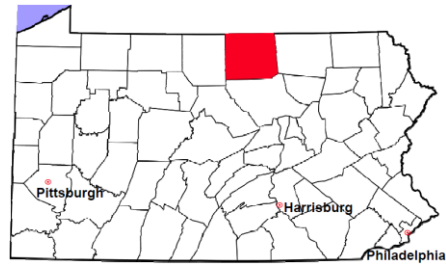


# Tioga County

2011 Population Estimate: 42,419

Class of County: 6th

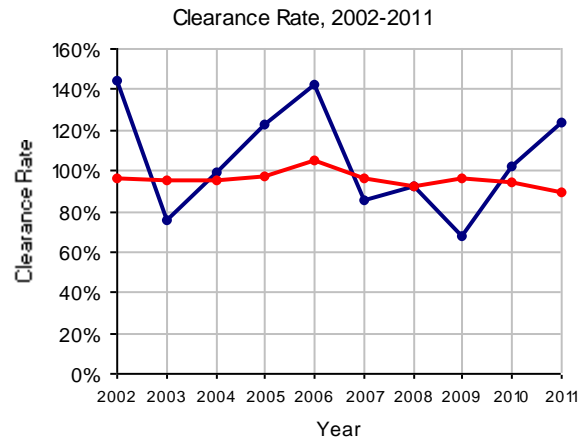
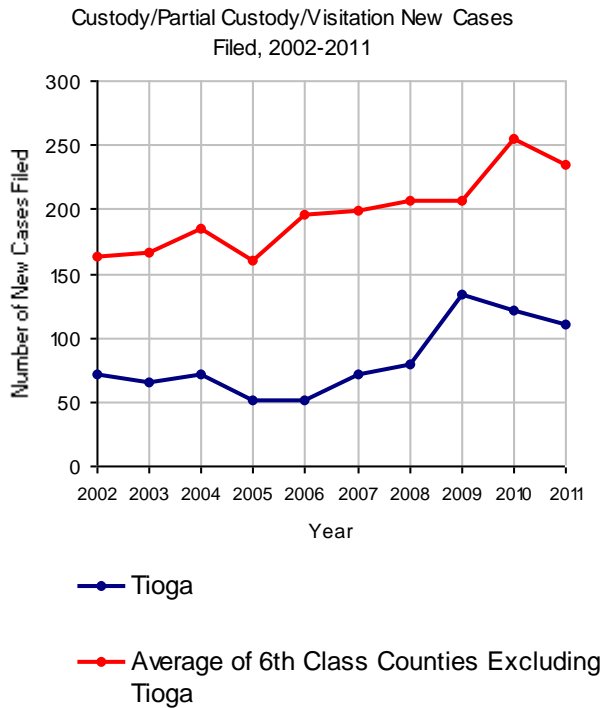
No. of Common Pleas Court Judgeships: 1



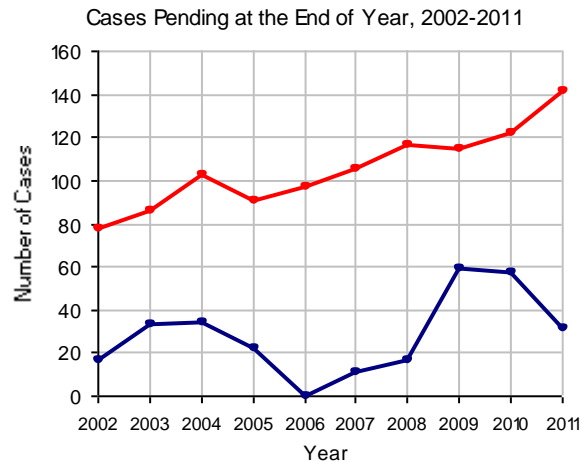
## 2011 Custody/Partial Custody/Visitation

No. of  
Petitions

Cases Pending 1/1/2011	57	
New Cases Filed in 2011	110	
<b>Cases Available for Processing</b>	<b>167</b>	
Processed By:		
Judge	0	
Non-Judicial Officer	136	100.0%
Other	0	
<b>Cases Processed</b>	<b>136</b>	<b>100.0%</b>
<b>Cases Pending 12/31/2011</b>	<b>31</b>	

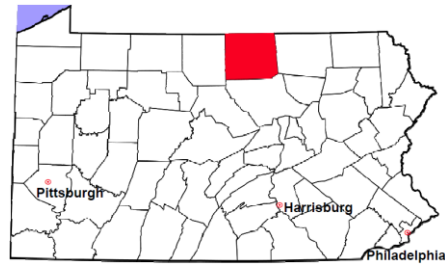


Note: Clearance Rate = Cases Processed / New Cases Filed



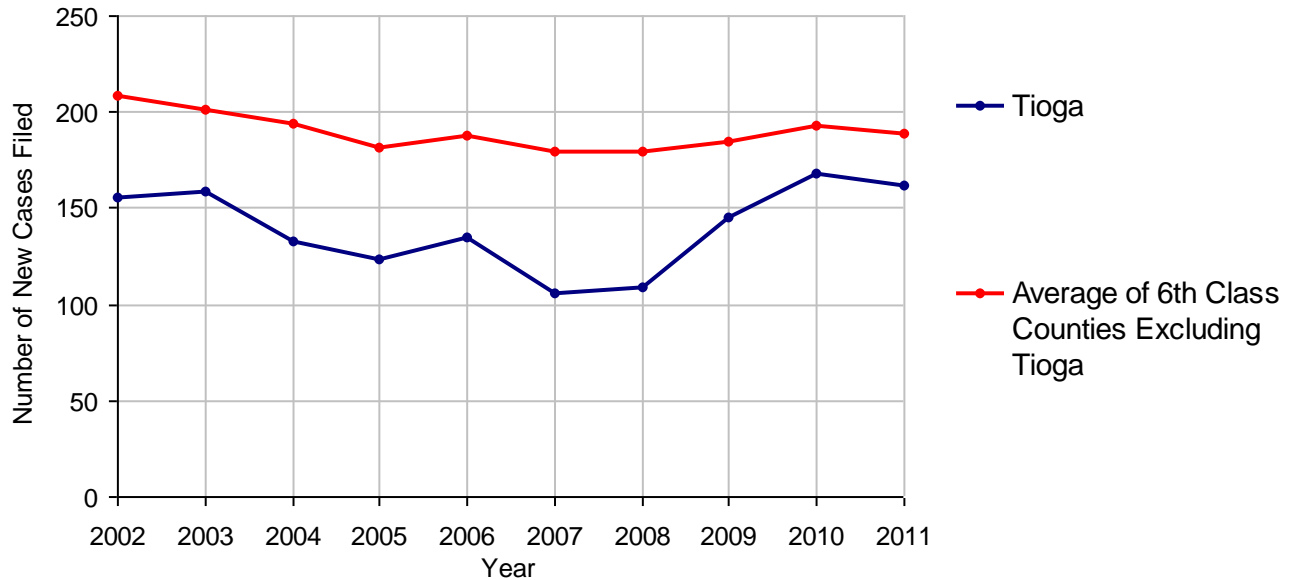
# Tioga County

2011 Population Estimate: 42,419  
 Class of County: 6th  
 No. of Common Pleas Court Judgeships: 1



<b>2011 Divorce</b>	<b>No. of Petitions</b>	
Cases Pending 1/1/2011	68	
New Cases Filed in 2011	162	
<b>Cases Available for Processing</b>	<b>230</b>	
Processed By:		
Contested Before a Judge	0	
Contested Before a Master	0	
Uncontested	159	100.0%
Other	0	
<b>Cases Processed</b>	<b>159</b>	<b>100.0%</b>
<b>Cases Pending 12/31/2011</b>	<b>71</b>	

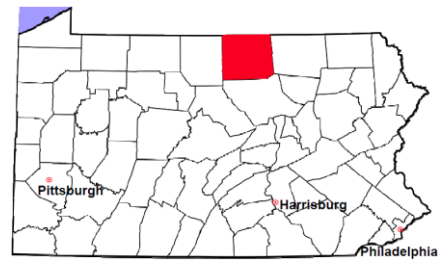
**Divorce New Cases Filed, 2002-2011**





# Tioga County

2011 Population Estimate: 42,419  
 Class of County: 6th  
 No. of Common Pleas Court Judgeships: 1



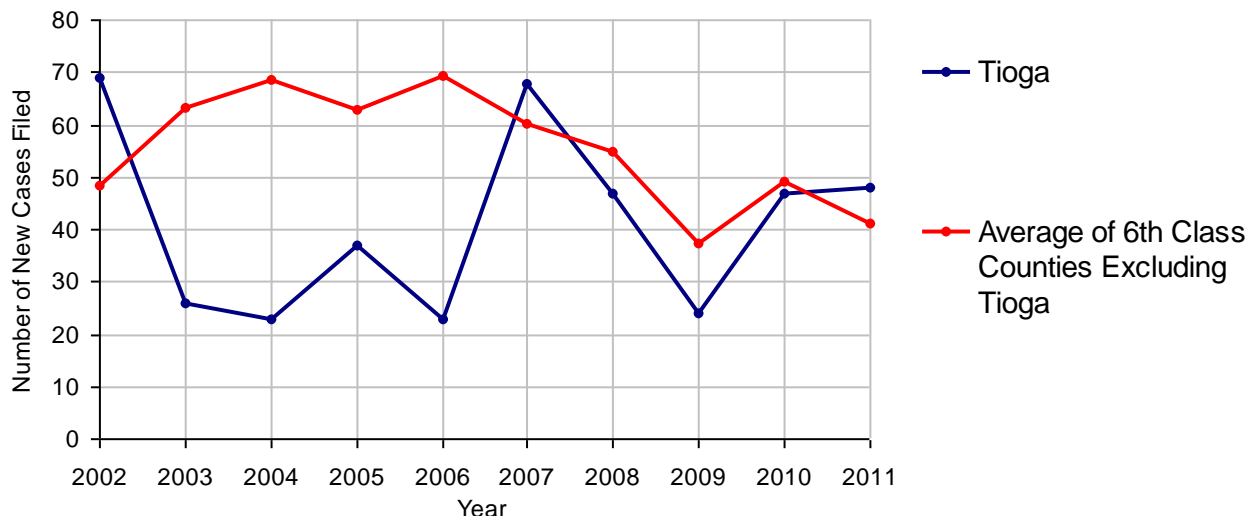
## 2011 Juvenile Dependency - Active Dependent Inventory



	Abuse/ Neglect	Status Offenses	Total
Cases Pending 1/1/2011	1	0	1
New Petitions Filed in 2011	47	1	48
Other	0	0	0
<b>Total Petitions Available for Processing</b>	<b>48</b>	<b>1</b>	<b>49</b>
Processed by:			
Adjudicated Dependent			
Judge	32	0	32
Master	0	0	0
Adjudicated NOT Dependent			
Judge	4	0	4
Master	0	0	0
Withdrawn/Dismissed/Inactive	0	0	0
Other	11	1	12
<b>Total Petitions Processed</b>	<b>47</b>	<b>1</b>	<b>48</b>
<b>Cases Pending 12/31/2011</b>	<b>1</b>	<b>0</b>	<b>1</b>

Data provided by CPCMS

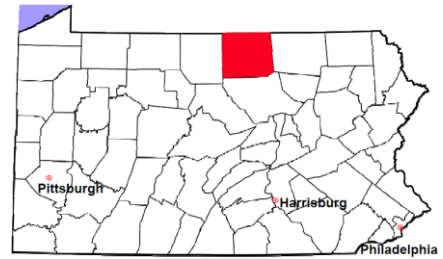
Abuse/Neglect and Status Offenses New Cases Filed, 2002-2011



Note: Dependency data for 2002-2010 were collected manually. Dependency data for 2011 were provided by CPCMS.

# Tioga County

2011 Population Estimate: 42,419  
 Class of County: 6th  
 No. of Common Pleas Court Judgeships: 1



## 2011 Juvenile Dependency - Adjudicated Dependent Inventory

	Abuse/ Neglect	Status Offenses	Total	
Cases Pending 1/1/2011	57	3	60	
New Adjudicated Dependent Cases	32	0	32	
Other	2	0	2	
<b>Total Adjudicated Dependent Cases</b>	<b>91</b>	<b>3</b>	<b>94</b>	
<b><u>Court Supervision Terminated:</u></b>				
Family Reunification	3	0	3	10.3%
Adoption	8	0	8	27.6%
Placement with a Relative/Guardian	12	0	12	41.4%
Aged Out	5	0	5	17.2%
Other Permanency Outcomes*	0	0	0	
Other**	1	0	1	3.4%
<b>Total Adjudicated Dependent Cases Terminated</b>	<b>29</b>	<b>0</b>	<b>29</b>	<b>100.0%</b>
<b>Cases Pending 12/31/2011</b>	<b>62</b>	<b>3</b>	<b>65</b>	

Data provided by CPCMS

\* Other Permanency Outcomes include: adjudicated delinquent, death due to natural causes, emancipation, permanent living arrangement, and parent has come forward.

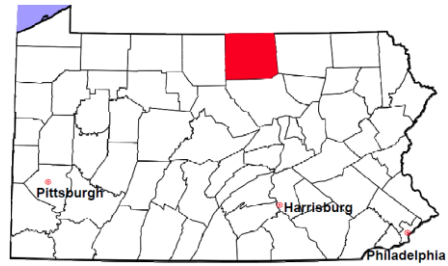
\*\* Other includes cases where Court Supervision is terminated due to transfer out of jurisdiction, withdrawal and administrative closures.

# Tioga County

2011 Population Estimate: 42,419

Class of County: 6th

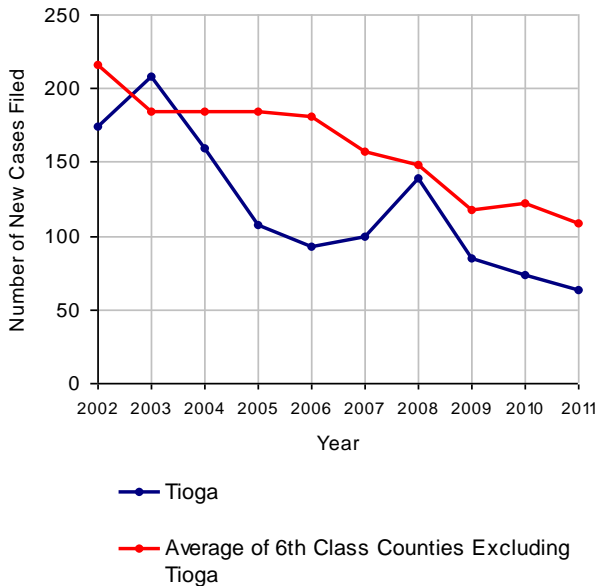
No. of Common Pleas Court Judgeships: 1



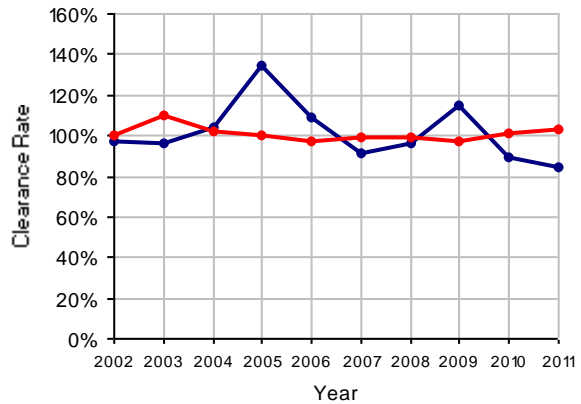
## 2011 Juvenile Delinquency

	No. of Cases
Cases Pending 1/1/2011	21
New Cases Filed in 2011	63
<b>Cases Available for Processing</b>	<b>84</b>
Processed By:	
Judge	53 100.0%
Non-Judicial Officer	0
Other	0
<b>Cases Processed</b>	<b>53 100.0%</b>
<b>Cases Pending 12/31/2011</b>	<b>31</b>

Juvenile Delinquency New Cases Filed, 2002-2011

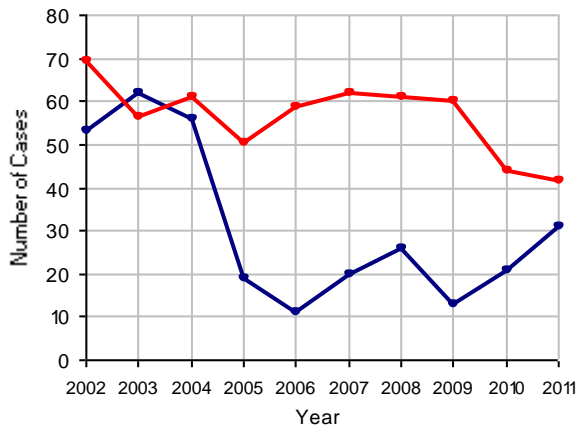


Clearance Rate, 2002-2011



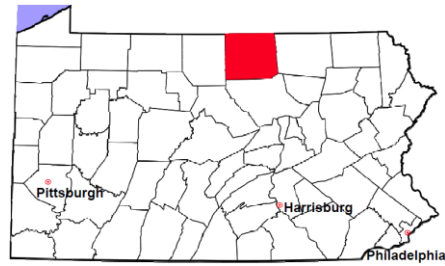
Note: Clearance Rate = Cases Processed / New Cases Filed

Cases Pending at the End of Year, 2002-2011



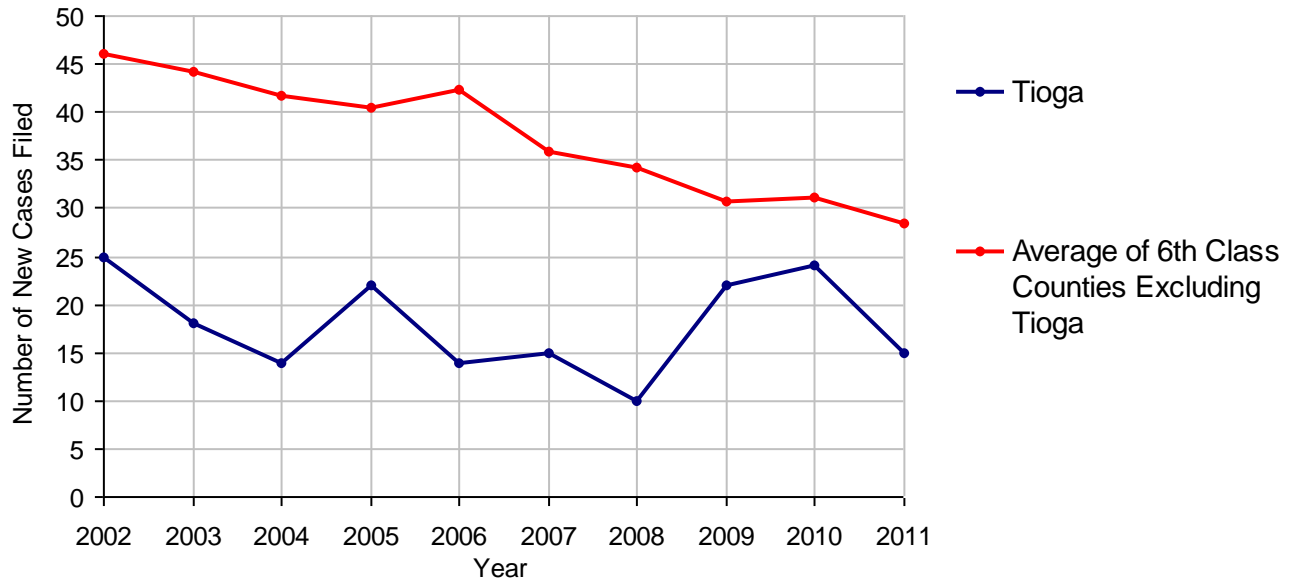
# Tioga County

2011 Population Estimate: 42,419  
 Class of County: 6th  
 No. of Common Pleas Court Judgeships: 1



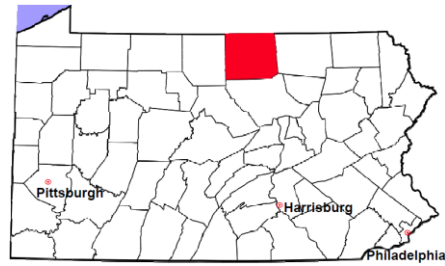
<b>2011 Accounts</b>	<b>No. of Cases</b>	
Cases Pending 1/1/2011	1	
New Cases Filed in 2011	15	
<b>Cases Available for Processing</b>	<b>16</b>	
Processed By:		
Contested before a Judge	0	
Contested before a Non-judicial Officer	0	
Uncontested	14	100.0%
Other	0	
<b>Cases Processed</b>	<b>14</b>	<b>100.0%</b>
<b>Cases Pending 12/31/2011</b>	<b>2</b>	

**Accounts New Cases Filed, 2002-2011**



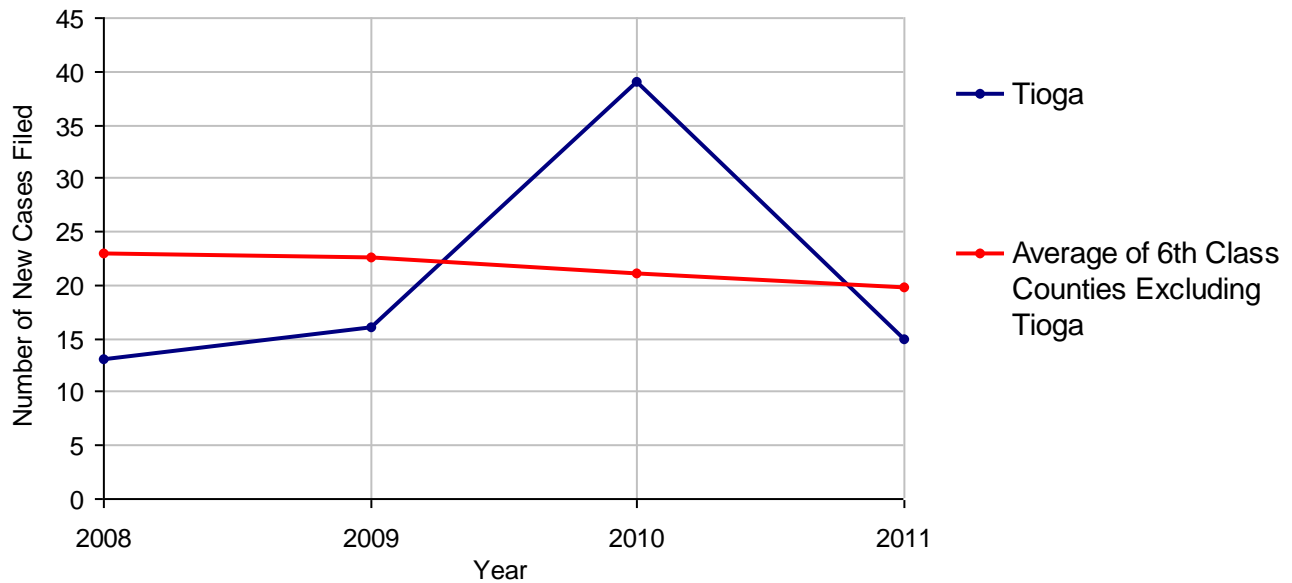
# Tioga County

2011 Population Estimate: 42,419  
 Class of County: 6th  
 No. of Common Pleas Court Judgeships: 1



<b>2011 Adoptions</b>		<b>No. of Cases</b>	
Cases Pending 1/1/2011		3	
New Cases Filed in 2011		15	
<b>Cases Available for Processing</b>		<b>18</b>	
Processed By:			
Contested before a Judge	Granted	0	
	Denied	0	
Uncontested	Granted	16	100.0%
	Denied	0	
Other		0	
<b>Cases Processed</b>		<b>16</b>	<b>100.0%</b>
<b>Cases Pending 12/31/2011</b>		<b>2</b>	

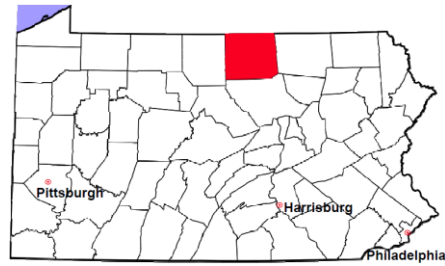
**Adoptions New Cases Filed, 2008-2011**



Note: Prior to 2008, each petition was counted as one new case, regardless of the number of children listed on the petition. Starting in 2008, each child listed on a petition is counted as a separate case. Therefore, statistics for the years since 2008 should not be compared to those for the years prior to 2008.

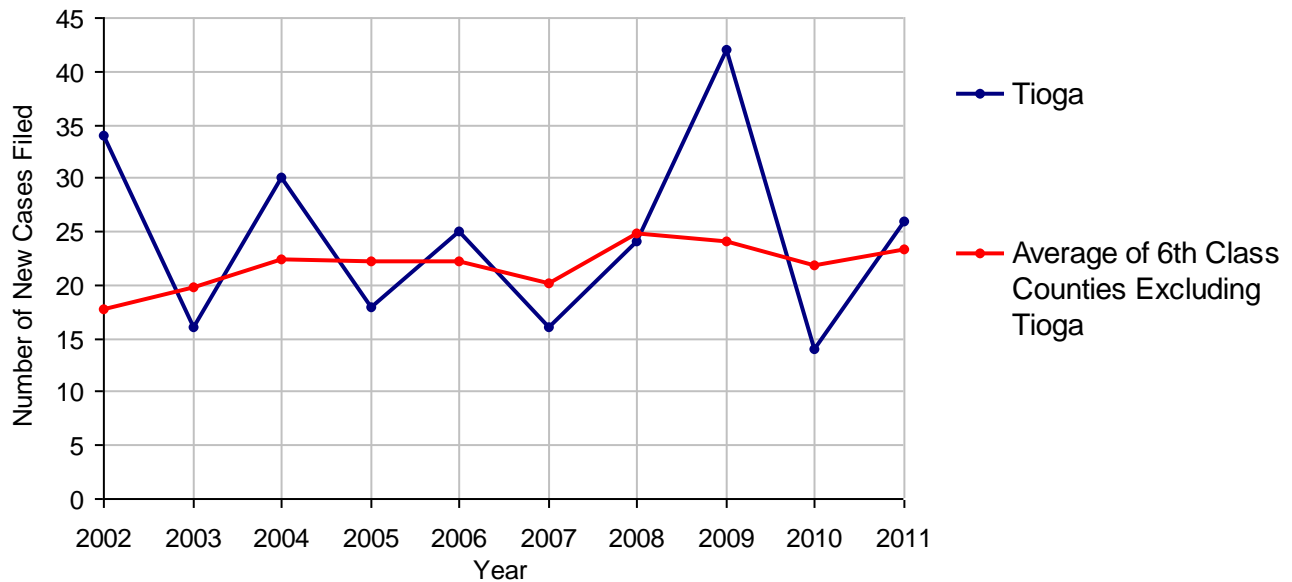
# Tioga County

2011 Population Estimate: 42,419  
 Class of County: 6th  
 No. of Common Pleas Court Judgeships: 1



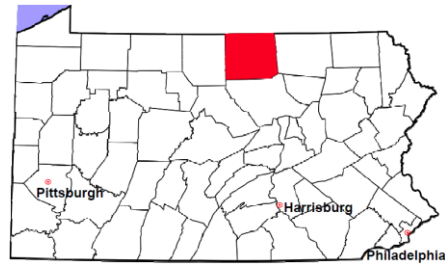
<b>2011 Relinquishments/Terminations</b>	<b>No. of Cases</b>
Cases Pending 1/1/2011	9
New Cases Filed in 2011	26
<b>Cases Available for Processing</b>	<b>35</b>
Processed By:	
Contested before a Judge	2      7.4%
Uncontested	25      92.6%
Other	0
<b>Cases Processed</b>	<b>27      100.0%</b>
<b>Cases Pending 12/31/2011</b>	<b>8</b>

**Relinquishments/Terminations New Cases Filed, 2002-2011**



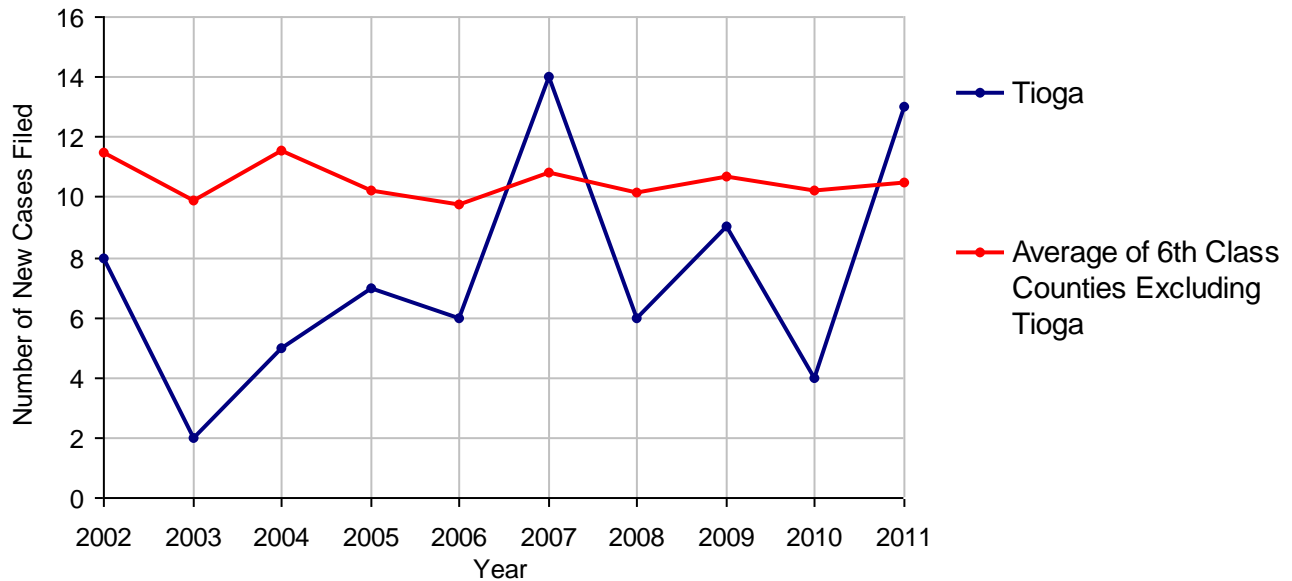
# Tioga County

2011 Population Estimate: 42,419  
 Class of County: 6th  
 No. of Common Pleas Court Judgeships: 1



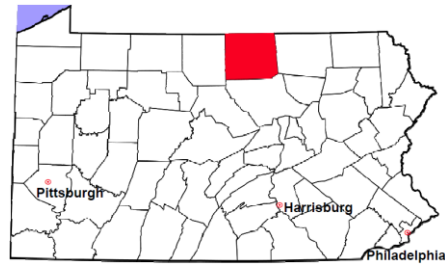
<b>2011 Appointment of Guardians</b>	<b>No. of Cases</b>	
Cases Pending 1/1/2011	1	
New Cases Filed in 2011	13	
<b>Cases Available for Processing</b>	<b>14</b>	
Processed By:		
Contested before a Judge	0	
Uncontested	12	92.3%
Other	1	7.7%
<b>Cases Processed</b>	<b>13</b>	<b>100.0%</b>
<b>Cases Pending 12/31/2011</b>	<b>1</b>	

**Appointment of Guardians New Cases Filed, 2002-2011**



# Tioga County

2011 Population Estimate: 42,419  
Class of County: 6th  
No. of Common Pleas Court Judgeships: 1



---

## 2011 Jury Activity and Performance Measures

---

A. Juror Days	381
B. Number Sent to Voir Dire	341
Voir Dire Attendance Rate (B/A * 100)	89.5%
C. Number of Jurors Selected	84
Juror Selection Rate (C/B * 100)	24.6%

---

Note: In mid-2011, AOPC began utilizing the National Center for State Courts' Jury Managers' Toolbox for collecting jury data. This has resulted in limited jury performance measures being reported for 2011. Additional data will be available in 2012.