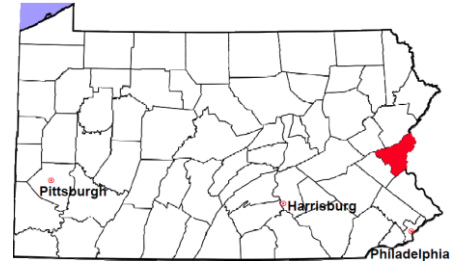


Northampton County

2011 Population Estimate: 298,476
 Class of County: 3rd
 No. of Common Pleas Court Judgeships: 9



2011 Criminal No. of Cases

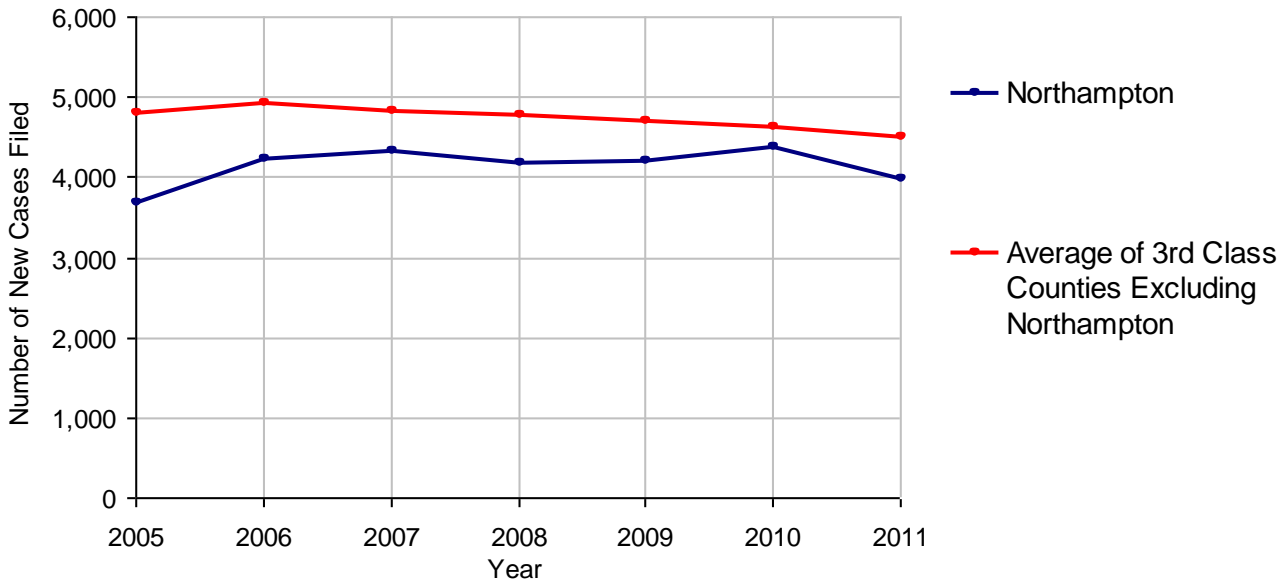
Cases Pending 1/1/2011	1,586	
New Cases Filed in 2011	3,994	
Reopened Cases	477	
Cases Available for Disposition	6,057	
Disposed by:		
Withdrawn/Dismissed	290	6.2%
ARD	1,487	31.6%
Guilty Plea	2,646	56.2%
Non-Jury Trial	16	0.3%
Jury Trial	30	0.6%
Inactive	124	2.6%
Other	117	2.5%
Total Cases Disposed	4,710	100.0%
Cases Pending 12/31/2011	1,347	
Cases Awaiting Sentencing	94	



Age of Pending Cases as of 12/31/2011		
0-60 Days	647	48.0%
61-120 Days	427	31.7%
121-180 Days	164	12.2%
181-240 Days	47	3.5%
241-300 Days	18	1.3%
301-360 Days	10	0.7%
Over 360 Days	34	2.5%
Total	1,347	100.0%

Data provided by CPCMS

Criminal New Cases Filed, 2005-2011

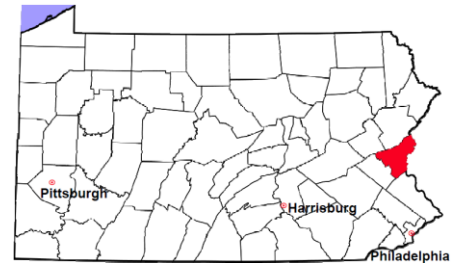


Northampton County

2011 Population Estimate: 298,476

Class of County: 3rd

No. of Common Pleas Court Judgeships: 9



2011 Criminal - New Cases by Case Type



Case Type	Felony	Misdemeanor	Summary /Ungraded	Total
Person	214	350	2	566
Property	394	474	8	876
Drug	206	608	0	814
Weapon	19	24	0	43
Public Order	68	291	1	360
Motor Vehicle - DWI/DUI	0	1,322	1	1,323
Motor Vehicle - Other	1	8	1	10
Other	0	2	0	2
Total	902	3,079	13	3,994
	22.6%	77.1%	0.3%	100.0%

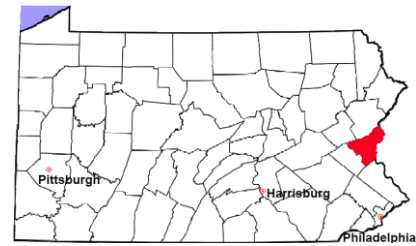
Data provided by CPCMS

Northampton County

2011 Population Estimate: 298,476

Class of County: 3rd

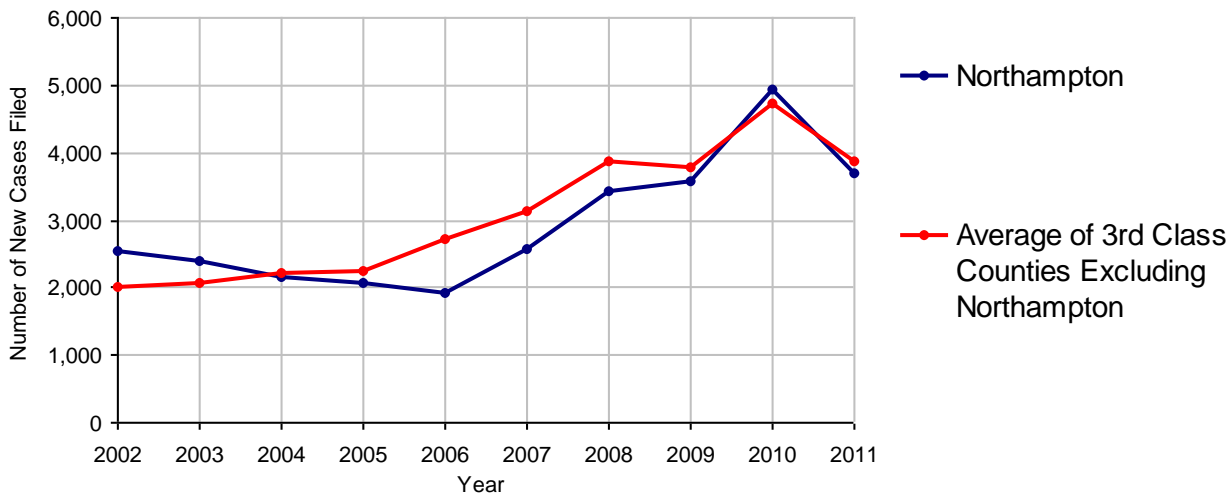
No. of Common Pleas Court Judgeships: 9



2011 Civil	Civil Action	Other	Total
Cases Pending 1/1/2011	9,300	3,613	12,913
Docketed Cases	2,331	1,351	3,682
Arbitration Appeals	11	6	17
Transferred In	6	2	8
Returned to Active	75	183	258
Cases Available for Processing	11,723	5,155	16,878
Disposed By:			
Default Judgments	1,159	637	1,796
Cases Decided by Arbitration Board	142	43	185
Dispositive Motions	1	1	2
Settlements	153	125	278
Moved to Inactive Status	1,224	0	1,224
Transferred/Withdrawn	36	116	152
Pa.R.J.A. 1901 Administrative Purge	0	0	0
Other	52	24	76
Jury Trial	16	0	16
Non-Jury Trial	27	30	57
Total Cases Disposed	2,810	976	3,786
Cases Pending 12/31/2011	8,913	4,179	13,092

Age of Pending Cases as of 12/31/2011 (Civil Action Only)		
0-6 months	2,855	32.0%
7-12 months	1,150	12.9%
13-18 months	958	10.7%
19-24 months	706	7.9%
25-30 months	703	7.9%
31-36 months	132	1.5%
37-42 months	165	1.9%
43-48 months	142	1.6%
49-54 months	152	1.7%
55-60 months	172	1.9%
61-66 months	204	2.3%
67-72 months	182	2.0%
Over 72 months	1,392	15.6%
Total	8,913	100.0%

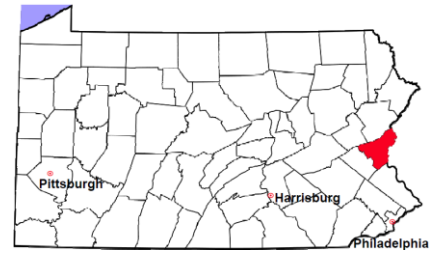
Docketed Cases, 2002-2011



Note: Prior to June 2010, docketed cases under the "Other" category were not reported. The reporting of these cases starting from June 2010 may contribute to an increase in docketed cases from 2009 to 2010.

Northampton County

2011 Population Estimate: 298,476
 Class of County: 3rd
 No. of Common Pleas Court Judgeships: 9



2011 Civil - Docketed Cases Listed by Case Type

TORT (does not include mass tort)

Intentional	16
Malicious Prosecution	1
Motor Vehicle	314
Nuisance	1
Premise Liability	94
Product Liability	13
Slander/Libel/Defamation	3
Other	70

MASS TORT

Asbestos	7
Tobacco	2
Toxic Tort - DES	0
Toxic Tort - Implant	0
Toxic Waste	0
Other	0

PROFESSIONAL LIABILITY

Dental	1
Legal	2
Medical Malpractice	23
Other	2

CONTRACT

(does not include judgments)

Buyer Plaintiff	19
Debt Collection:	
Credit Card	1,185
Debt Collection: Other	436
Employment Dispute:	
Discrimination	3
Employment Dispute: Other	22
Other	106

REAL PROPERTY

Ejectment*	105
Eminent Domain/ Condemnation*	8
Ground Rent	0
Landlord/Tenant Dispute	11
Mortgage Forclosure:	
Residential*	822
Commercial*	24
Partition of Real Property*	7
Quiet Title*	13
Other*	15

CIVIL APPEALS

Administrative Agencies

Board of Assessment*	38
Board of Elections*	0
Dept. of Transportation*	171
Zoning Board*	13
Statutory Appeal - Other*	20
Other*	0

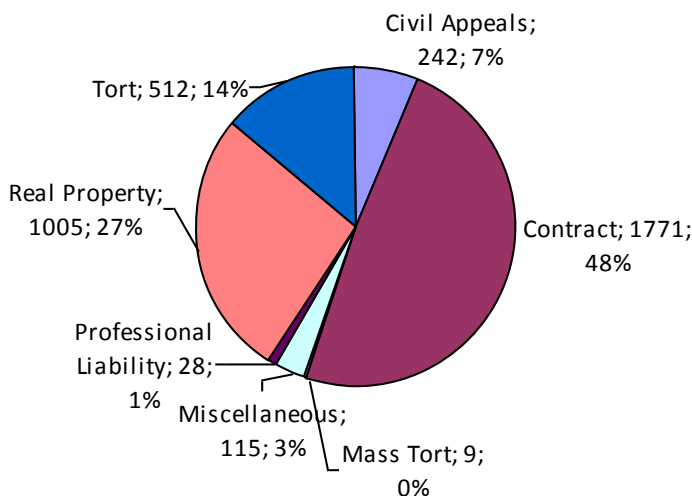
MISCELLANEOUS

Common Law/ Statutory Arbitration*	3
Declaratory Judgment*	16
Mandamus*	2
Non-Domestic Relations Restraining Order*	0
Quo Warranto*	1
Replevin*	12
Other*	81

TOTAL DOCKETED CASES:

3,682

* Civil Other



Of the Docketed Cases:

Pro Se Filings:	191	5.2%
Class Action Suits:	1	<0.1%
MDJ Appeals:	234	6.4%

Northampton County

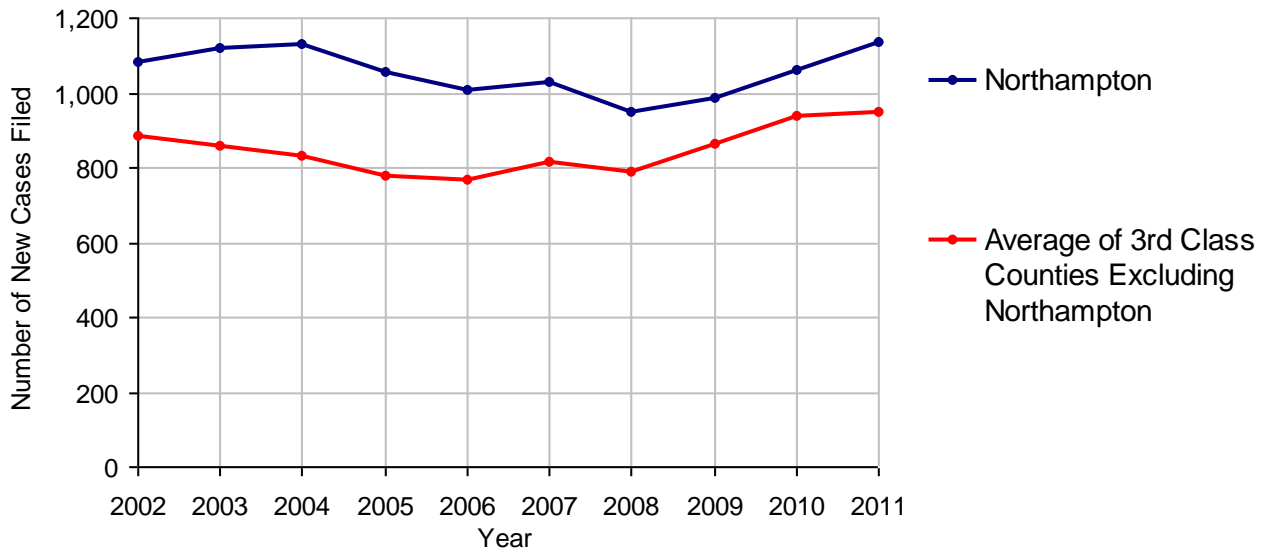
2011 Population Estimate: 298,476
 Class of County: 3rd
 No. of Common Pleas Court Judgeships: 9



2011 Protection From Abuse

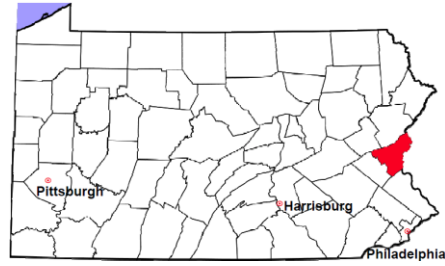
	No. of Petitions
Cases Pending 1/1/2011	195
New Cases Filed in 2011	1,135
<i>Of these, Petitions Requesting Temporary Orders: 1,135 (100.0%)</i>	
<i>Temporary Orders DENIED: 183 (16.1%), Temporary Orders GRANTED: 952 (83.9%)</i>	
Cases Available for Processing	1,330
Processed By:	
Temporary Order DENIED After Ex Parte Hearing and No Evidentiary Hearing Scheduled	36 2.9%
Temporary Order DISMISSED After Evidentiary Hearing and No Final Order Entered	168 13.5%
Final Order DENIED After Evidentiary Hearing Before a Judge	39 3.1%
Final Order GRANTED After Evidentiary Hearing Before a Judge	338 27.1%
Plaintiff Did Not Appear For Evidentiary Hearing	149 11.9%
Final Order by STIPULATION OR AGREEMENT Between the Parties	101 8.1%
Petition WITHDRAWN by Plaintiff	360 28.8%
TRANSFERRED to Another Jurisdiction	0
DECEASED Party	0
Other	57 4.6%
Cases Processed	1,248 100.0%
Cases Pending 12/31/2011	82

PFA New Cases Filed, 2002-2011

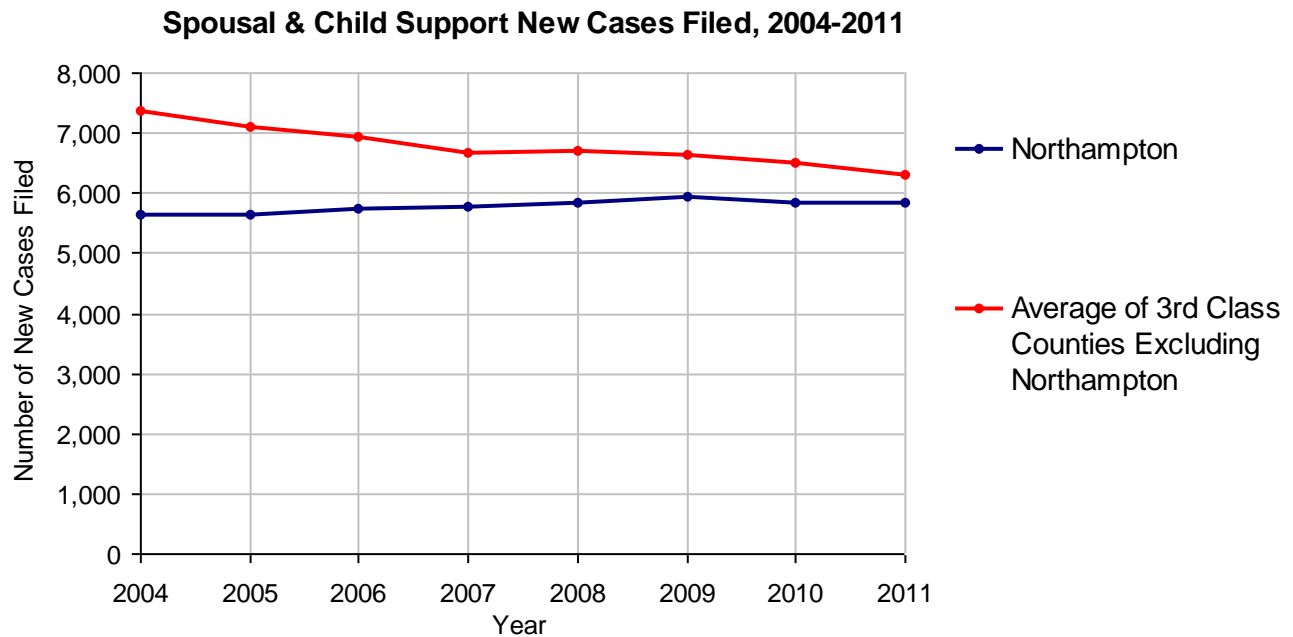


Northampton County

2011 Population Estimate: 298,476
 Class of County: 3rd
 No. of Common Pleas Court Judgeships: 9



2011 Spousal & Child Support	No. of Petitions	
Cases Pending 1/1/2011	1,128	
New Cases Filed in 2011	5,833	
Dockets Transferred In (+)	153	
Dockets Transferred Out (-)	136	
Cases Available for Processing	6,978	
Processed By:		
Judge	530	9.3%
Intake Officer	5,196	90.7%
Hearing Officer	0	
Other	1	<0.1%
Cases Processed	5,727	100.0%
Cases Pending 12/31/2011	1,251	

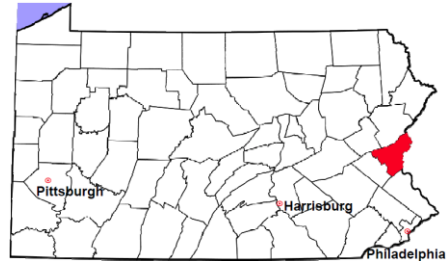


Northampton County

2011 Population Estimate: 298,476

Class of County: 3rd

No. of Common Pleas Court Judgeships: 9



2011 Custody/Partial Custody/Visitation

No. of
Petitions

Cases Pending 1/1/2011

240

New Cases Filed in 2011

834

Cases Available for Processing

1,074

Processed By:

Judge

77

8.7%

Non-Judicial Officer

440

49.7%

Other

369

41.6%

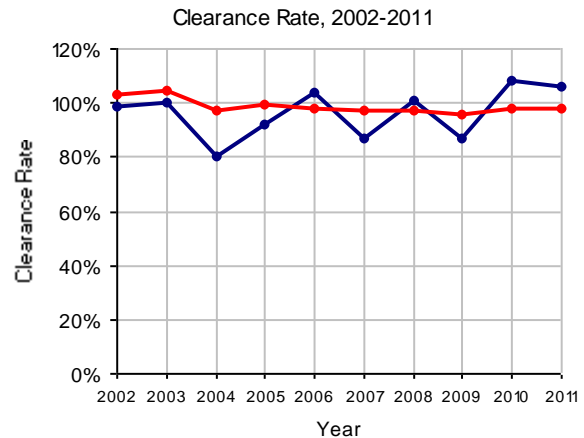
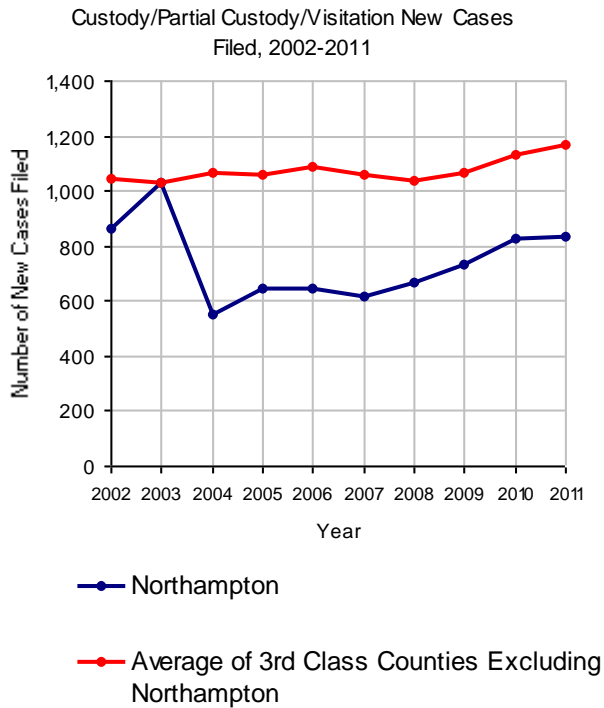
Cases Processed

886

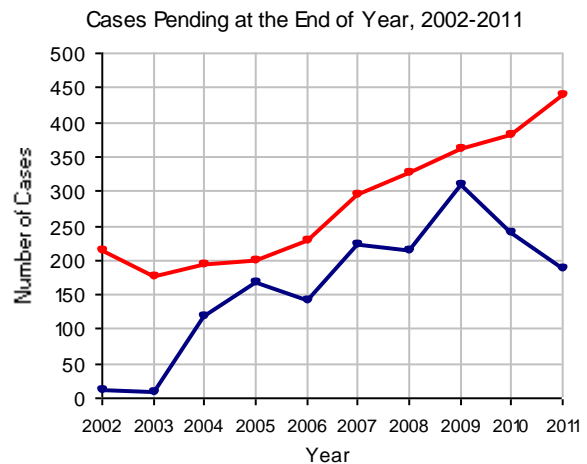
100.0%

Cases Pending 12/31/2011

188

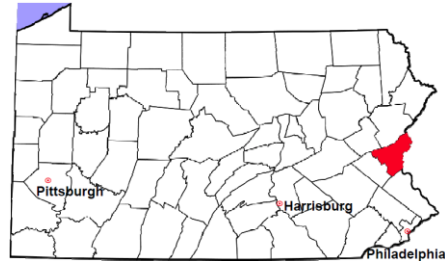


Note: Clearance Rate = Cases Processed / New Cases Filed



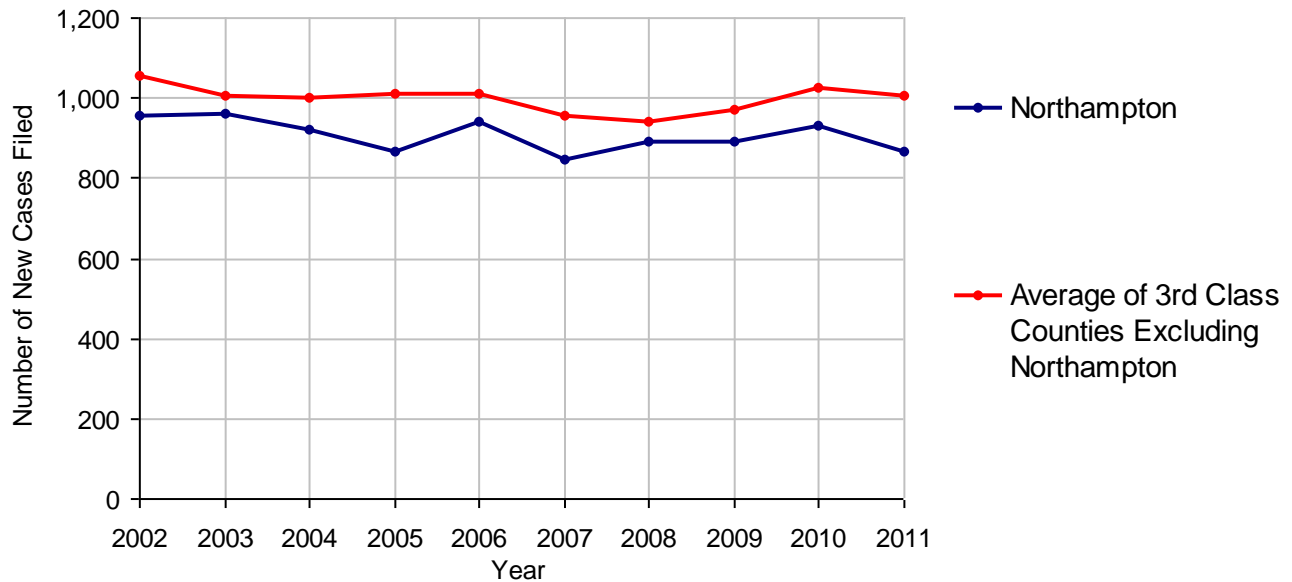
Northampton County

2011 Population Estimate: 298,476
 Class of County: 3rd
 No. of Common Pleas Court Judgeships: 9



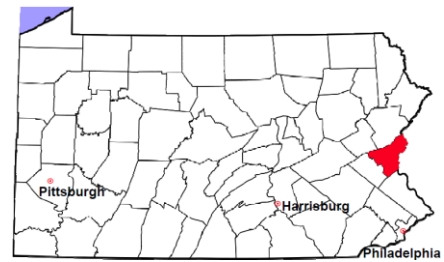
2011 Divorce	No. of Petitions	
Cases Pending 1/1/2011	2,171	
New Cases Filed in 2011	866	
Cases Available for Processing	3,037	
Processed By:		
Contested Before a Judge	0	
Contested Before a Master	64	3.8%
Uncontested	742	43.6%
Other	895	52.6%
Cases Processed	1,701	100.0%
Cases Pending 12/31/2011	1,336	

Divorce New Cases Filed, 2002-2011



Northampton County

2011 Population Estimate: 298,476
 Class of County: 3rd
 No. of Common Pleas Court Judgeships: 9



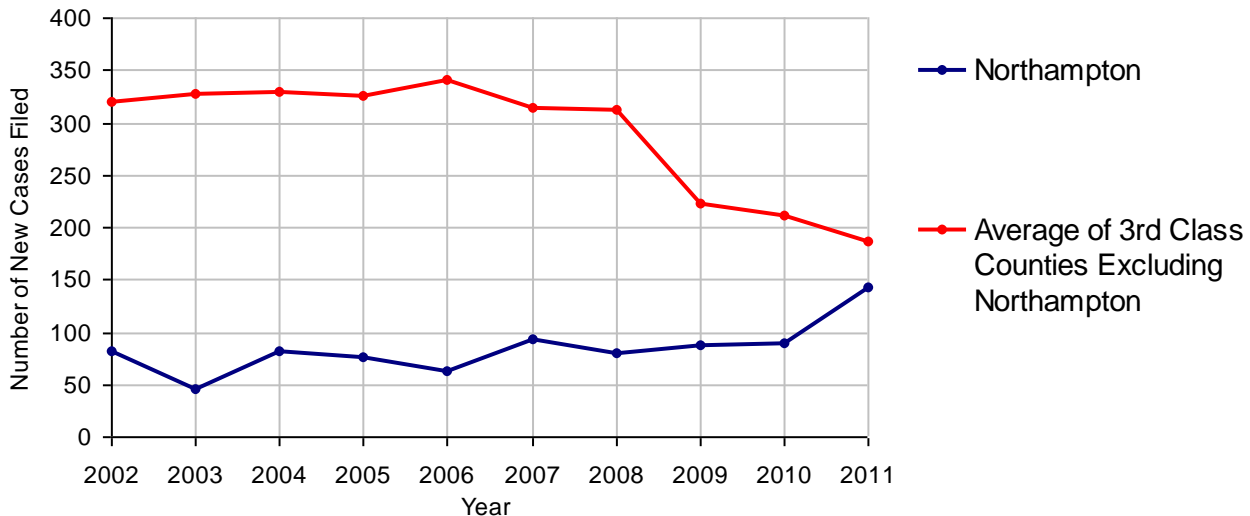
2011 Juvenile Dependency - Active Dependent Inventory



	Abuse/ Neglect	Status Offenses	Total
Cases Pending 1/1/2011	16	3	19
New Petitions Filed in 2011	135	7	142
Other	7	1	8
Total Petitions Available for Processing	158	11	169
Processed by:			
Adjudicated Dependent			
Judge	35	0	35
Master	97	9	106
Adjudicated NOT Dependent			
Judge	0	0	0
Master	3	0	3
Withdrawn/Dismissed/Inactive	1	0	1
Other	8	2	10
Total Petitions Processed	144	11	155
Cases Pending 12/31/2011	14	0	14

Data provided by CPCMS

Abuse/Neglect and Status Offenses New Cases Filed, 2002-2011



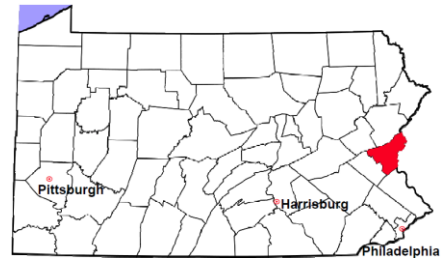
Note: Dependency data for 2002-2010 were collected manually. Dependency data for 2011 were provided by CPCMS.

Northampton County

2011 Population Estimate: 298,476

Class of County: 3rd

No. of Common Pleas Court Judgeships: 9



2011 Juvenile Dependency - Adjudicated Dependent Inventory

	Abuse/ Neglect	Status Offenses	Total	
Cases Pending 1/1/2011	241	18	259	
New Adjudicated Dependent Cases	132	9	141	
Other	24	4	28	
Total Adjudicated Dependent Cases	397	31	428	
<u>Court Supervision Terminated:</u>				
Family Reunification	5	1	6	4.1%
Adoption	23	0	23	15.6%
Placement with a Relative/Guardian	60	6	66	44.9%
Aged Out	22	3	25	17.0%
Other Permanency Outcomes*	7	0	7	4.8%
Other**	17	3	20	13.6%
Total Adjudicated Dependent Cases Terminated	134	13	147	100.0%
Cases Pending 12/31/2011	263	18	281	

Data provided by CPCMS

* Other Permanency Outcomes include: adjudicated delinquent, death due to natural causes, emancipation, permanent living arrangement, and parent has come forward.

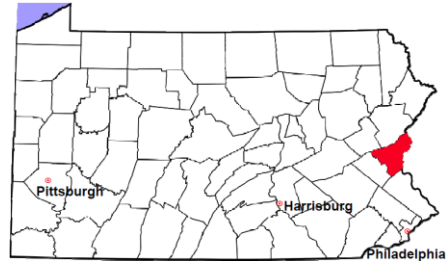
** Other includes cases where Court Supervision is terminated due to transfer out of jurisdiction, withdrawal and administrative closures.

Northampton County

2011 Population Estimate: 298,476

Class of County: 3rd

No. of Common Pleas Court Judgeships: 9



2011 Juvenile Delinquency

No. of Cases

Cases Pending 1/1/2011 335

New Cases Filed in 2011 708

Cases Available for Processing 1,043

Processed By:

Judge 466 66.2%

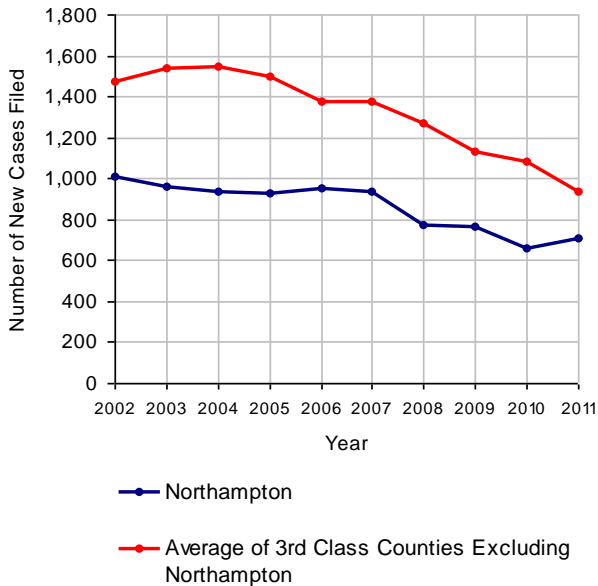
Non-Judicial Officer 221 31.4%

Other 17 2.4%

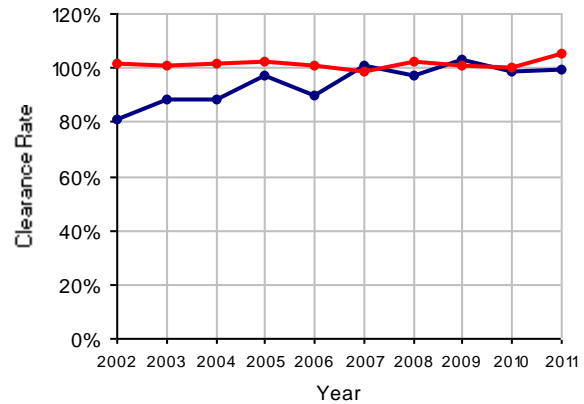
Cases Processed 704 100.0%

Cases Pending 12/31/2011 339

Juvenile Delinquency New Cases Filed, 2002-2011

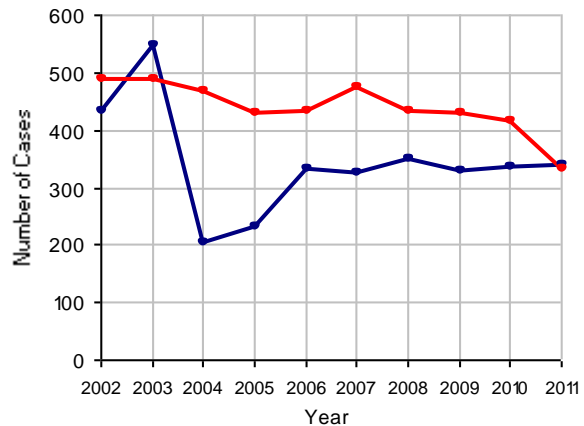


Clearance Rate, 2002-2011



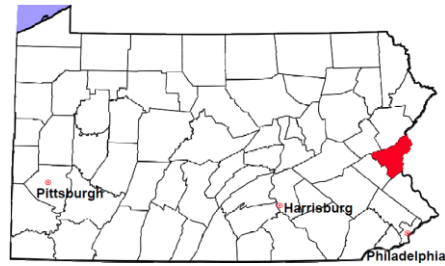
Note: Clearance Rate = Cases Processed / New Cases Filed

Cases Pending at the End of Year, 2002-2011



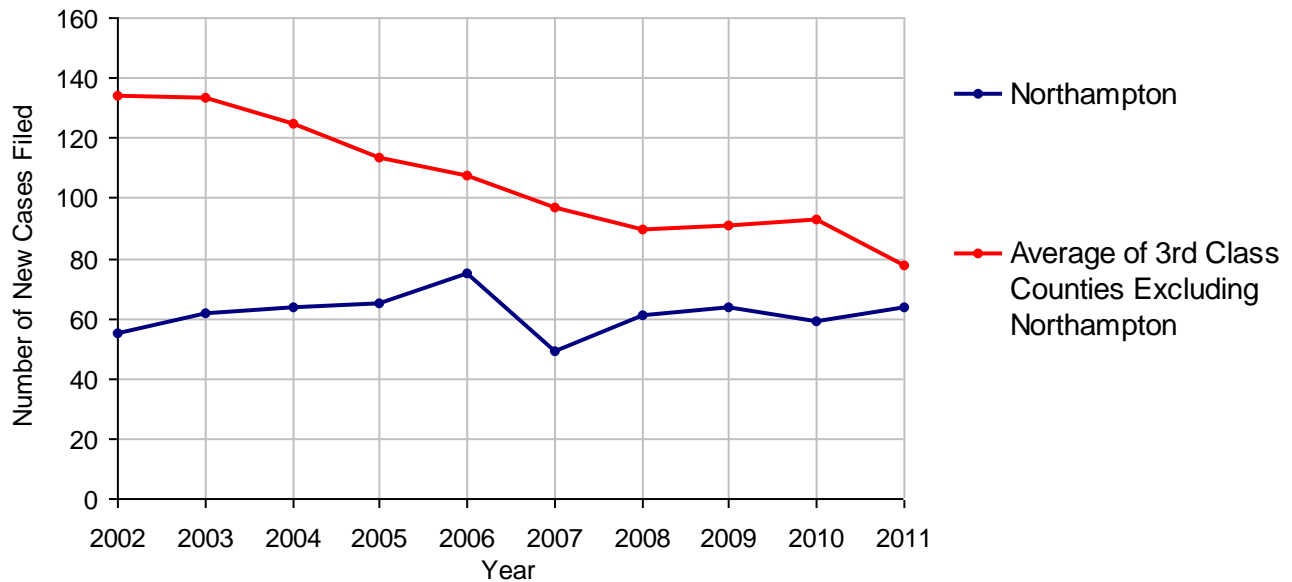
Northampton County

2011 Population Estimate: 298,476
 Class of County: 3rd
 No. of Common Pleas Court Judgeships: 9



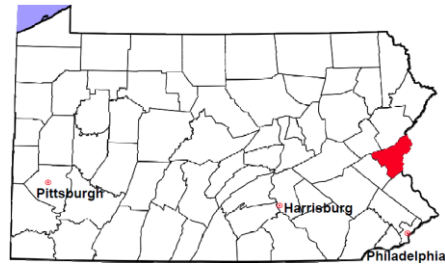
2011 Accounts	No. of Cases
Cases Pending 1/1/2011	9
New Cases Filed in 2011	64
Cases Available for Processing	73
Processed By:	
Contested before a Judge	5 8.6%
Contested before a Non-judicial Officer	0
Uncontested	51 87.9%
Other	2 3.4%
Cases Processed	58 100.0%
Cases Pending 12/31/2011	15

Accounts New Cases Filed, 2002-2011



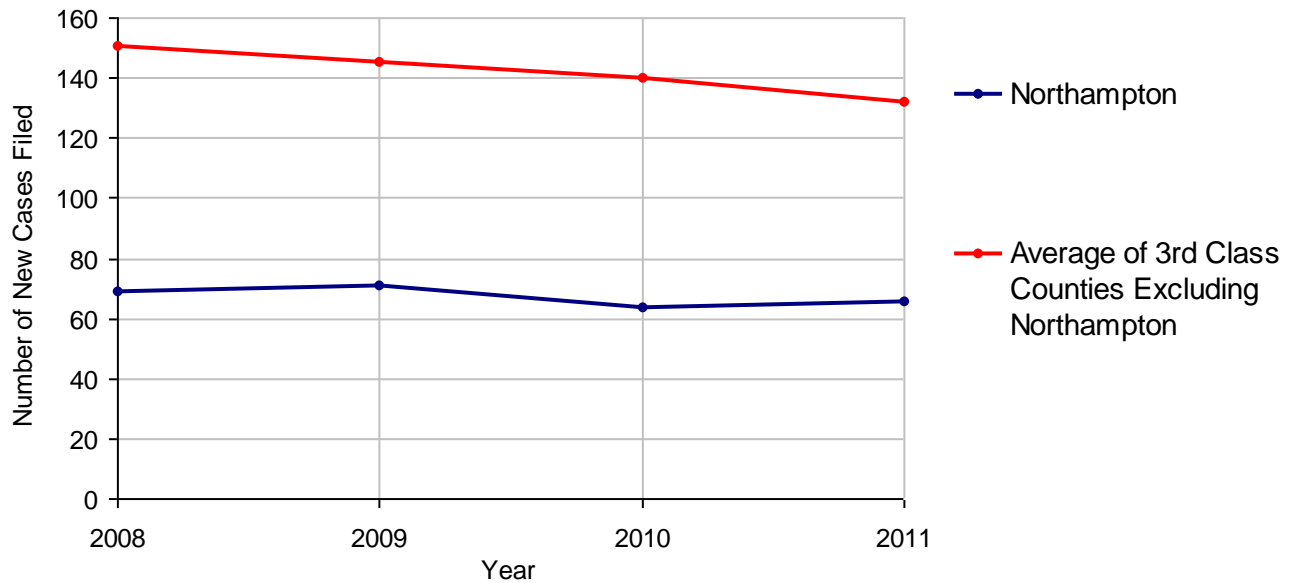
Northampton County

2011 Population Estimate: 298,476
 Class of County: 3rd
 No. of Common Pleas Court Judgeships: 9



2011 Adoptions		No. of Cases	
Cases Pending 1/1/2011		1	
New Cases Filed in 2011		66	
Cases Available for Processing		67	
Processed By:			
Contested before a Judge	Granted	1	1.6%
	Denied	0	
Uncontested	Granted	63	98.4%
	Denied	0	
Other		0	
Cases Processed		64	100.0%
Cases Pending 12/31/2011		3	

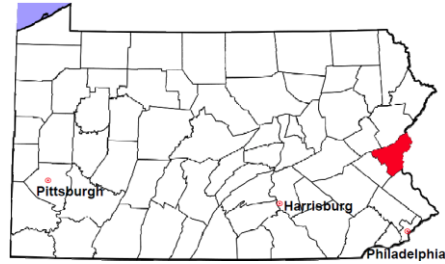
Adoptions New Cases Filed, 2008-2011



Note: Prior to 2008, each petition was counted as one new case, regardless of the number of children listed on the petition. Starting in 2008, each child listed on a petition is counted as a separate case. Therefore, statistics for the years since 2008 should not be compared to those for the years prior to 2008.

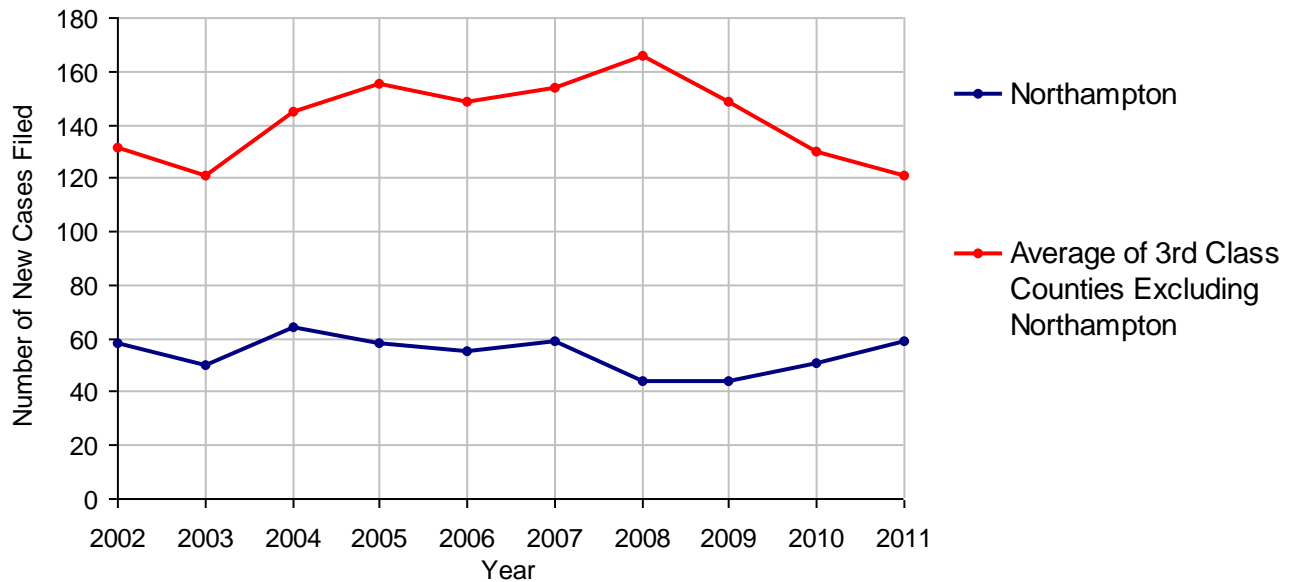
Northampton County

2011 Population Estimate: 298,476
 Class of County: 3rd
 No. of Common Pleas Court Judgeships: 9



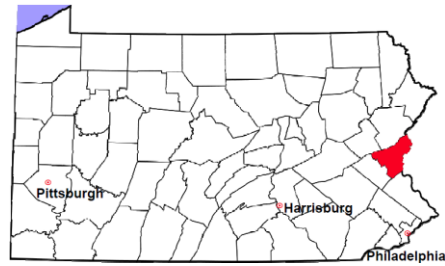
2011 Relinquishments/Terminations	No. of Cases	
Cases Pending 1/1/2011	9	
New Cases Filed in 2011	59	
Cases Available for Processing	68	
Processed By:		
Contested before a Judge	17	28.3%
Uncontested	38	63.3%
Other	5	8.3%
Cases Processed	60	100.0%
Cases Pending 12/31/2011	8	

Relinquishments/Terminations New Cases Filed, 2002-2011



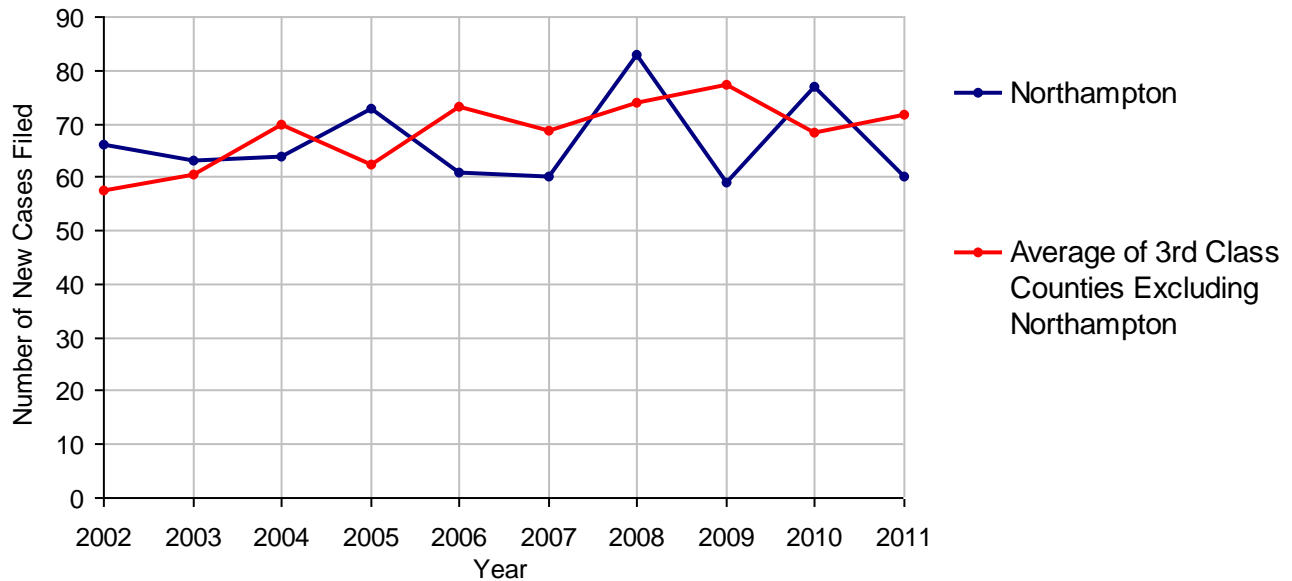
Northampton County

2011 Population Estimate: 298,476
 Class of County: 3rd
 No. of Common Pleas Court Judgeships: 9



2011 Appointment of Guardians		No. of Cases
Cases Pending 1/1/2011		3
New Cases Filed in 2011		60
Cases Available for Processing		63
Processed By:		
Contested before a Judge	6	11.3%
Uncontested	41	77.4%
Other	6	11.3%
Cases Processed	53	100.0%
Cases Pending 12/31/2011		10

Appointment of Guardians New Cases Filed, 2002-2011

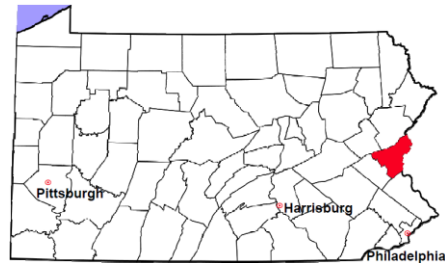


Northampton County

2011 Population Estimate: 298,476

Class of County: 3rd

No. of Common Pleas Court Judgeships: 9



2011 Jury Activity and Performance Measures

A. Juror Days	3,563
B. Number Sent to Voir Dire	2,009
Voir Dire Attendance Rate (B/A * 100)	56.4%
C. Number of Jurors Selected	730
Juror Selection Rate (C/B * 100)	36.3%

Note: In mid-2011, AOPC began utilizing the National Center for State Courts' Jury Managers' Toolbox for collecting jury data. This has resulted in limited jury performance measures being reported for 2011. Additional data will be available in 2012.