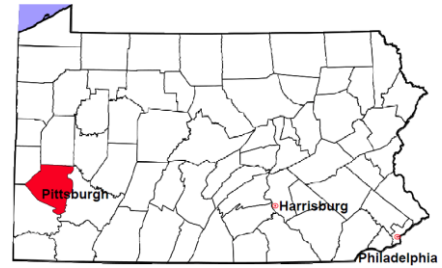


# Allegheny County

2011 Population Estimate: 1,227,066  
 Class of County: 2nd  
 No. of Common Pleas Court Judgeships: 43



## 2011 Criminal No. of Cases

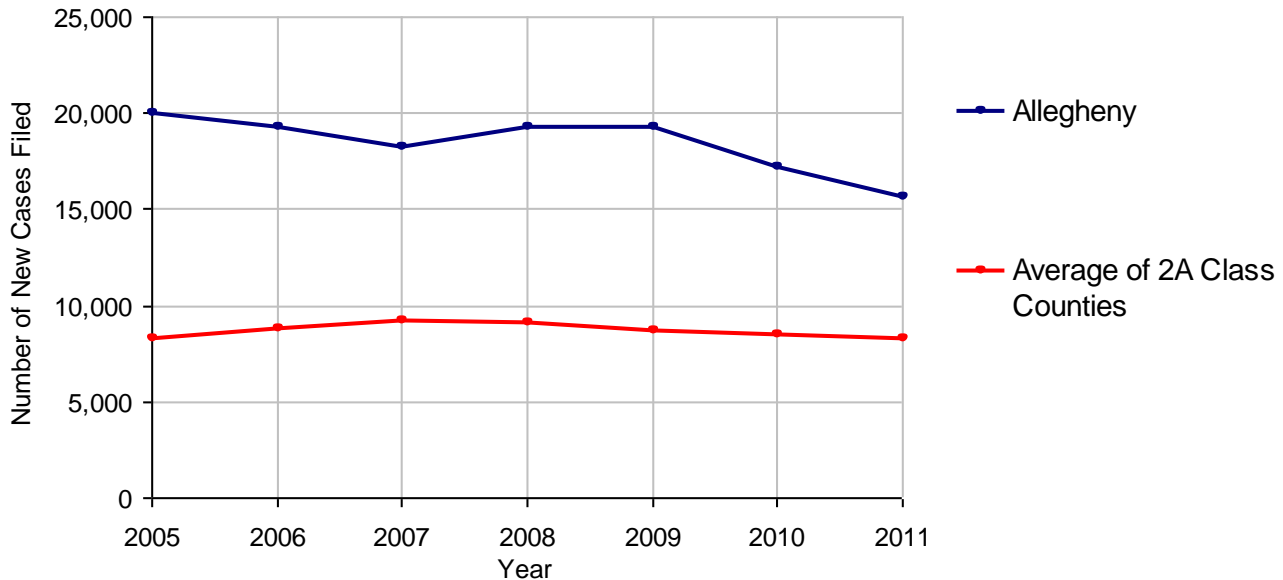
Cases Pending 1/1/2011	9,912	
New Cases Filed in 2011	15,706	
Reopened Cases	1,386	
<b>Cases Available for Disposition</b>	<b>27,004</b>	
<b>Disposed by:</b>		
Withdrawn/Dismissed	1,346	7.2%
ARD	2,671	14.3%
Guilty Plea	12,850	68.8%
Non-Jury Trial	453	2.4%
Jury Trial	187	1.0%
Inactive	818	4.4%
Other	354	1.9%
<b>Total Cases Disposed</b>	<b>18,679</b>	<b>100.0%</b>
<b>Cases Pending 12/31/2011</b>	<b>8,325</b>	
Cases Awaiting Sentencing	269	



Age of Pending Cases as of 12/31/2011		
0-60 Days	2,364	28.4%
61-120 Days	2,192	26.3%
121-180 Days	1,448	17.4%
181-240 Days	674	8.1%
241-300 Days	475	5.7%
301-360 Days	301	3.6%
Over 360 Days	871	10.5%
<b>Total</b>	<b>8,325</b>	<b>100.0%</b>

Data provided by CPCMS

**Criminal New Cases Filed, 2005-2011**

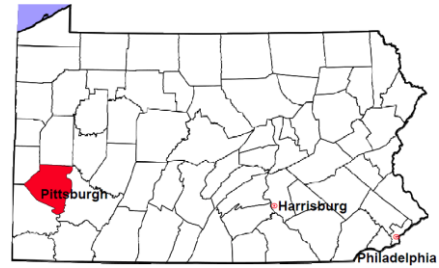


# Allegheny County

2011 Population Estimate: 1,227,066

Class of County: 2nd

No. of Common Pleas Court Judgeships: 43



## 2011 Criminal - New Cases by Case Type



Case Type	Felony	Misdemeanor	Summary /Ungraded	Total
Person	1,475	1,216	12	2,703
Property	2,023	1,279	55	3,357
Drug	1,154	1,635	0	2,789
Weapon	438	72	1	511
Public Order	537	1,016	64	1,617
Motor Vehicle - DWI/DUI	0	4,664	0	4,664
Motor Vehicle - Other	6	47	4	57
Other	4	2	2	8
<b>Total</b>	<b>5,637</b>	<b>9,931</b>	<b>138</b>	<b>15,706</b>
	<b>35.9%</b>	<b>63.2%</b>	<b>0.9%</b>	<b>100.0%</b>

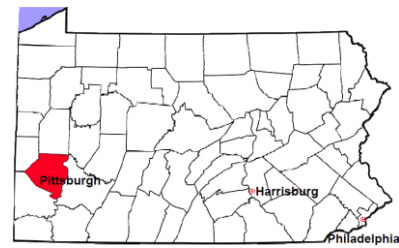
Data provided by CPCMS

# Allegheny County

2011 Population Estimate: 1,227,066

Class of County: 2nd

No. of Common Pleas Court Judgeships: 43

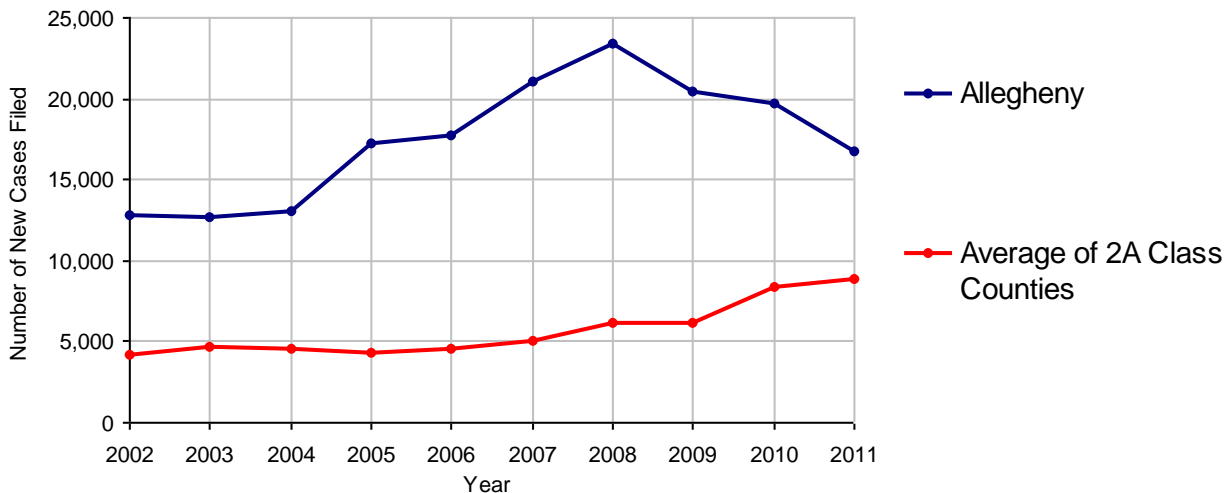


<b>2011 Civil</b>	<b>Civil Action</b>	<b>Other</b>	<b>Total</b>
Cases Pending 1/1/2011	10,797	6,272	17,069
Docketed Cases	11,960	4,825	16,785
Arbitration Appeals	375	0	375
Transferred In	0	0	0
Returned to Active	0	0	0
<b>Cases Available for Processing</b>	<b>23,132</b>	<b>11,097</b>	<b>34,229</b>
Disposed By:			
Default Judgments	0	0	0
Cases Decided by Arbitration Board	1,652	1	1,653
Dispositive Motions	0	0	0
Settlements	0	0	0
Moved to Inactive Status	289	63	352
Transferred/Withdrawn	113	2	115
Pa.R.J.A. 1901 Administrative Purge	0	0	0
Other	0	0	0
Jury Trial	16	0	16
Non-Jury Trial	451	1	452
<b>Total Cases Disposed</b>	<b>2,521</b>	<b>67</b>	<b>2,588</b>
<b>Cases Pending 12/31/2011</b>	<b>20,611</b>	<b>11,030</b>	<b>31,641*</b>

Age of Pending Cases as of 12/31/2011 (Civil Action Only)		
0-6 months	5,979	29.0%
7-12 months	5,600	27.2%
13-18 months	6,925	33.6%
19-24 months	2,107	10.2%
25-30 months	0	
31-36 months	0	
37-42 months	0	
43-48 months	0	
49-54 months	0	
55-60 months	0	
61-66 months	0	
67-72 months	0	
Over 72 months	0	
<b>Total</b>	<b>20,611</b>	<b>100.0%</b>

\* Inflated due to the under-reporting of cases disposed, particularly Default Judgments, Dispositive Motions, and Settlements.

**Docketed Cases, 2002-2011**



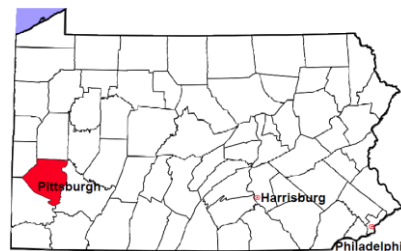
Note: Prior to June 2010, docketed cases under the "Other" category were not reported. The reporting of these cases starting from June 2010 may contribute to an increase in docketed cases from 2009 to 2010.

# Allegheny County

2011 Population Estimate: 1,227,066

Class of County: 2nd

No. of Common Pleas Court Judgeships: 43



## 2011 Civil - Docketed Cases Listed by Case Type

### TORT (does not include mass tort)

Intentional	27
Malicious Prosecution	8
Motor Vehicle	1,368
Nuisance	1
Premise Liability	315
Product Liability	60
Slander/Libel/Defamation	32
Other	956

### MASS TORT

Asbestos	68
Tobacco	0
Toxic Tort - DES	0
Toxic Tort - Implant	0
Toxic Waste	0
Other	0

### PROFESSIONAL LIABILITY

Dental	9
Legal	17
Medical Malpractice	293
Other	39

### CONTRACT

(does not include judgments)

Buyer Plaintiff	121
Debt Collection:	
Credit Card	3,213
Other	2,642
Employment Dispute:	
Discrimination	2
Other	22
Other	1,488

### REAL PROPERTY

Ejectment*	384
Eminent Domain/ Condemnation*	87
Ground Rent	0
Landlord/Tenant Dispute	1,279
Mortgage Forclosures:	
Residential*	2,033
Commercial*	163
Partition of Real Property*	15
Quiet Title*	217
Other*	0

### CIVIL APPEALS

#### Administrative Agencies

Board of Assessment*	1,550
Board of Elections*	10
Dept. of Transportation*	0
Zoning Board*	25
Statutory Appeal - Other*	203
Other*	0

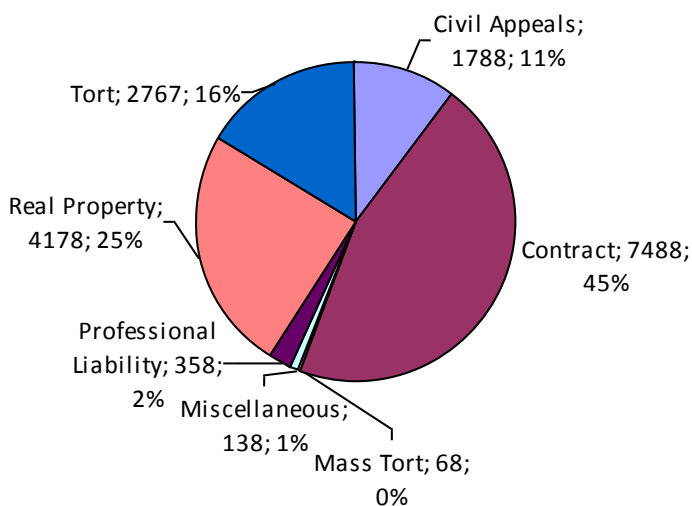
### MISCELLANEOUS

Common Law/ Statutory Arbitration*	12
Declaratory Judgment*	68
Mandamus*	17
Non-Domestic Relations Restraining Order*	0
Quo Warranto*	0
Replevin*	41
Other*	0

### **TOTAL DOCKETED CASES:**

**16,785**

\* Civil Other



### **Of the Docketed Cases:**

Pro Se Filings:	3,381	20.1%
Class Action Suits:	9	0.1%
MDJ Appeals:	1,276	7.6%

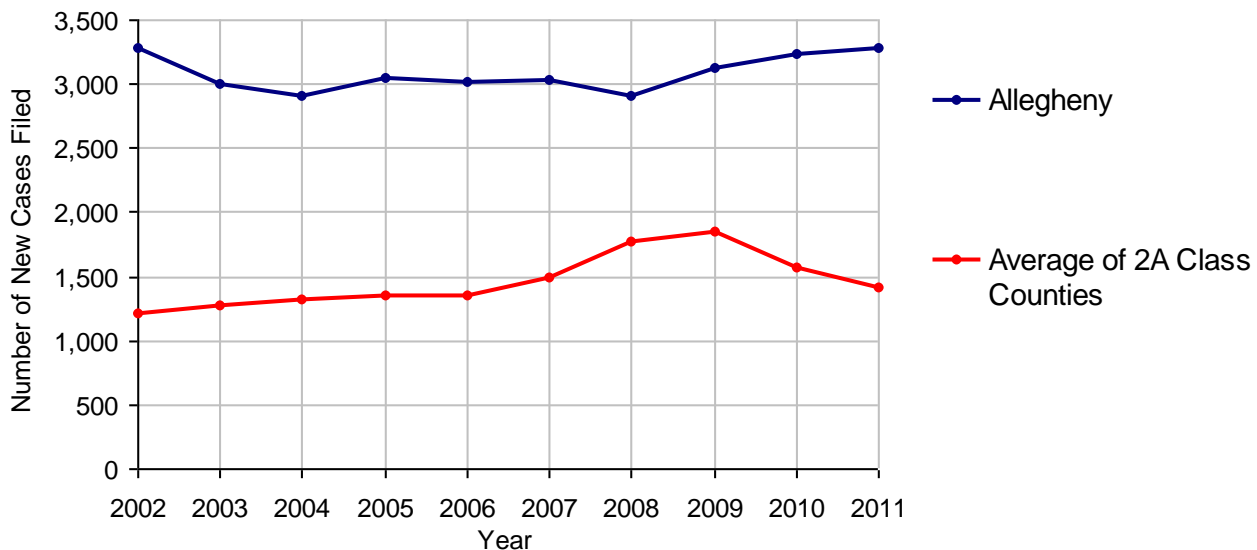
# Allegheny County

2011 Population Estimate: 1,227,066  
 Class of County: 2nd  
 No. of Common Pleas Court Judgeships: 43



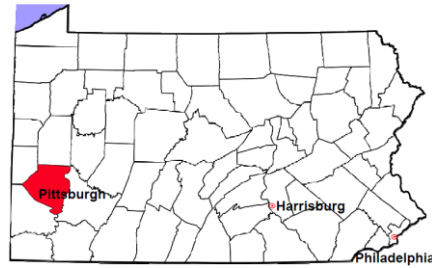
<b>2011 Protection From Abuse</b>	<b>No. of Petitions</b>
Cases Pending 1/1/2011	60
New Cases Filed in 2011	3,278
<i>Of these, Petitions Requesting Temporary Orders: 3,278 (100.0%)</i>	
<i>Temporary Orders DENIED: 104 (3.2%), Temporary Orders GRANTED: 3,174 (96.8%)</i>	
<b>Cases Available for Processing</b>	<b>3,338</b>
Processed By:	
Temporary Order DENIED After Ex Parte Hearing and No Evidentiary Hearing Scheduled	61 1.9%
Temporary Order DISMISSED After Evidentiary Hearing and No Final Order Entered	0
Final Order DENIED After Evidentiary Hearing Before a Judge	68 2.1%
Final Order GRANTED After Evidentiary Hearing Before a Judge	503 15.3%
Plaintiff Did Not Appear For Evidentiary Hearing	907 27.6%
Final Order by STIPULATION OR AGREEMENT Between the Parties	699 21.3%
Petition WITHDRAWN by Plaintiff	1,043 31.8%
TRANSFERRED to Another Jurisdiction	0
DECEASED Party	0
Other	0
<b>Cases Processed</b>	<b>3,281 100.0%</b>
<b>Cases Pending 12/31/2011</b>	<b>57</b>

**PFA New Cases Filed, 2002-2011**

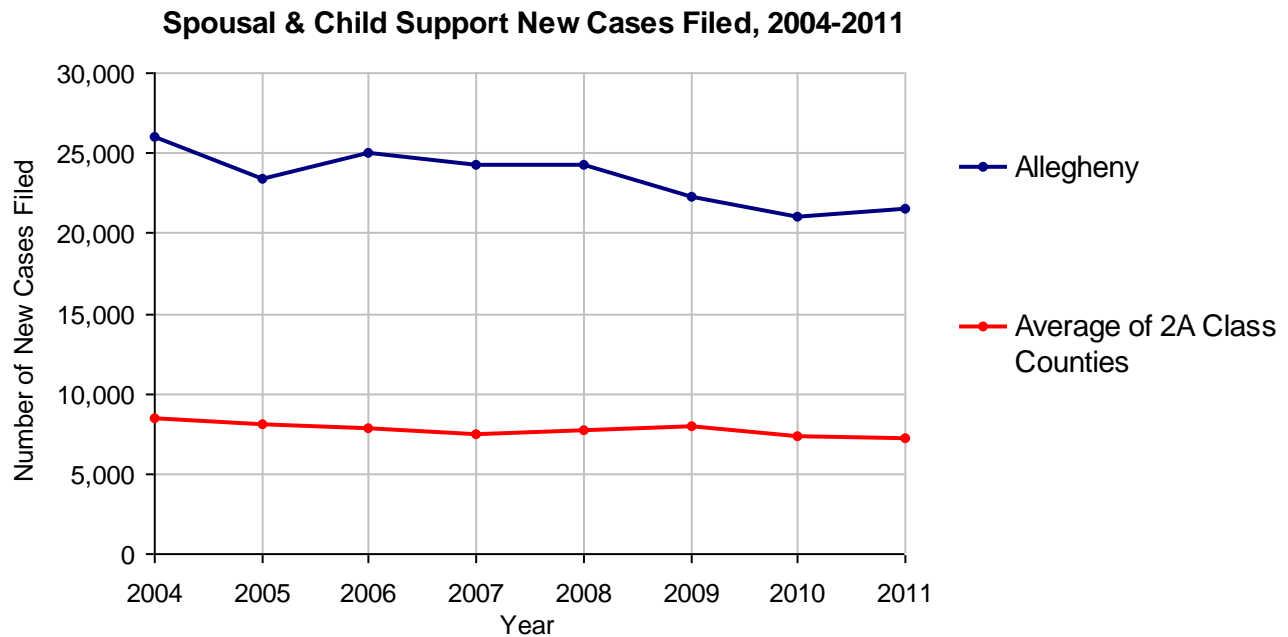


# Allegheny County

2011 Population Estimate: 1,227,066  
 Class of County: 2nd  
 No. of Common Pleas Court Judgeships: 43

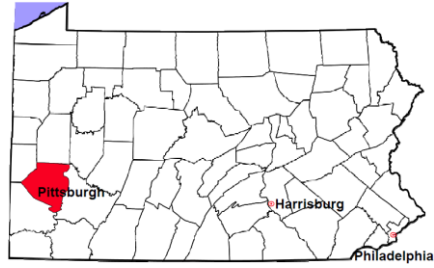


<b>2011 Spousal &amp; Child Support</b>	<b>No. of Petitions</b>	
Cases Pending 1/1/2011	5,623	
New Cases Filed in 2011	21,484	
Dockets Transferred In (+)	142	
Dockets Transferred Out (-)	171	
<b>Cases Available for Processing</b>	<b>27,078</b>	
Processed By:		
Judge	129	0.6%
Intake Officer	15,571	74.0%
Hearing Officer	5,300	25.2%
Other	32	0.2%
<b>Cases Processed</b>	<b>21,032</b>	<b>100.0%</b>
<b>Cases Pending 12/31/2011</b>	<b>6,046</b>	



# Allegheny County

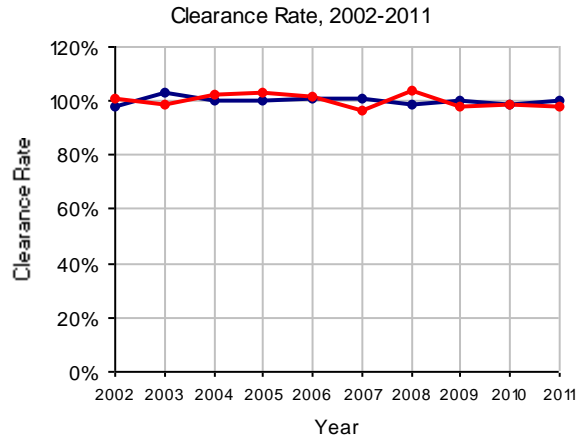
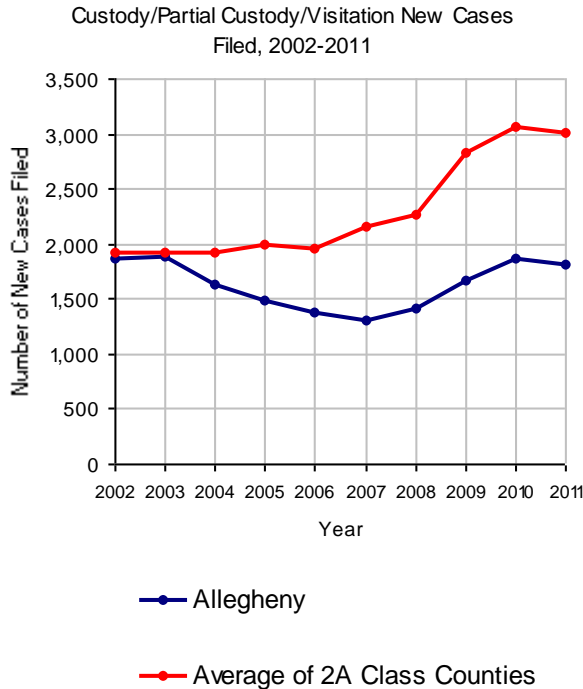
2011 Population Estimate: 1,227,066  
 Class of County: 2nd  
 No. of Common Pleas Court Judgeships: 43



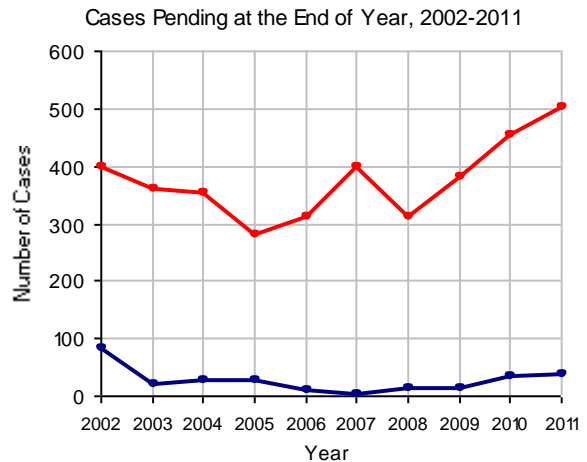
## 2011 Custody/Partial Custody/Visitation

No. of Petitions

Cases Pending 1/1/2011	35
New Cases Filed in 2011	1,814
<b>Cases Available for Processing</b>	<b>1,849</b>
Processed By:	
Judge	835 46.1%
Non-Judicial Officer	963 53.2%
Other	13 0.7%
<b>Cases Processed</b>	<b>1,811 100.0%</b>
<b>Cases Pending 12/31/2011</b>	<b>38</b>

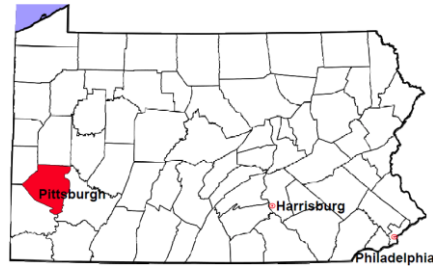


Note: Clearance Rate = Cases Processed / New Cases Filed



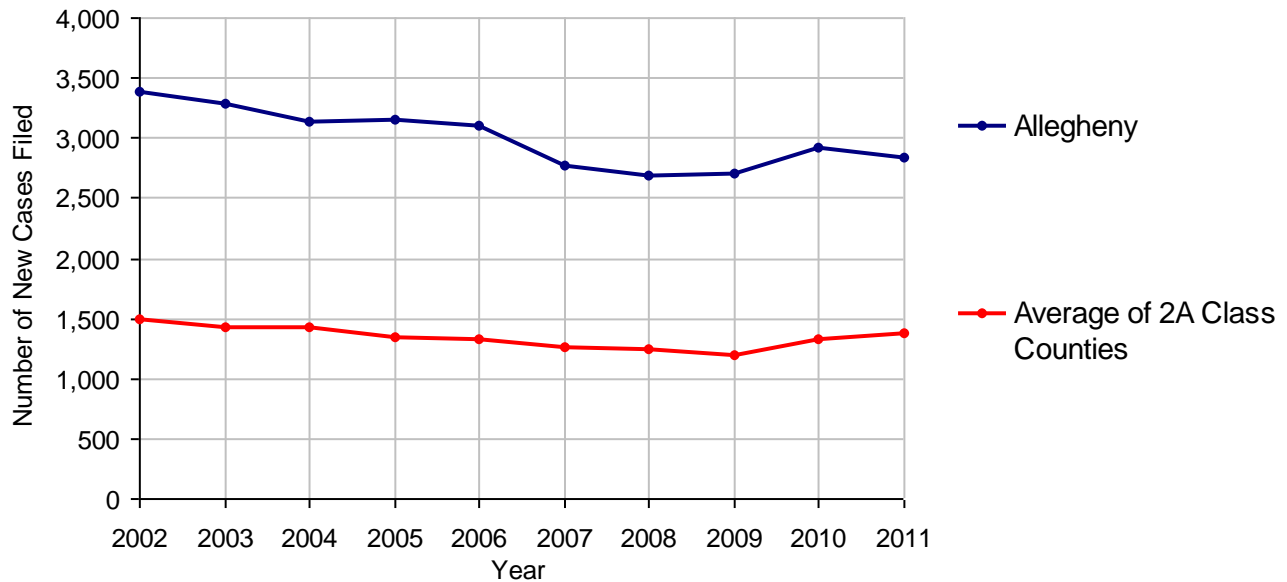
# Allegheny County

2011 Population Estimate: 1,227,066  
 Class of County: 2nd  
 No. of Common Pleas Court Judgeships: 43



<b>2011 Divorce</b>	<b>No. of Petitions</b>	
Cases Pending 1/1/2011	4,964	
New Cases Filed in 2011	2,831	
<b>Cases Available for Processing</b>	<b>7,795</b>	
Processed By:		
Contested Before a Judge	322	12.0%
Contested Before a Master	83	3.1%
Uncontested	2,266	84.4%
Other	15	0.6%
<b>Cases Processed</b>	<b>2,686</b>	<b>100.0%</b>
<b>Cases Pending 12/31/2011</b>	<b>5,109</b>	

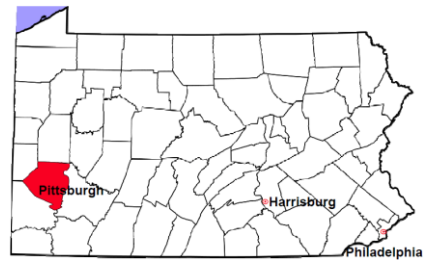
**Divorce New Cases Filed, 2002-2011**





# Allegheny County

2011 Population Estimate: 1,227,066  
 Class of County: 2nd  
 No. of Common Pleas Court Judgeships: 43



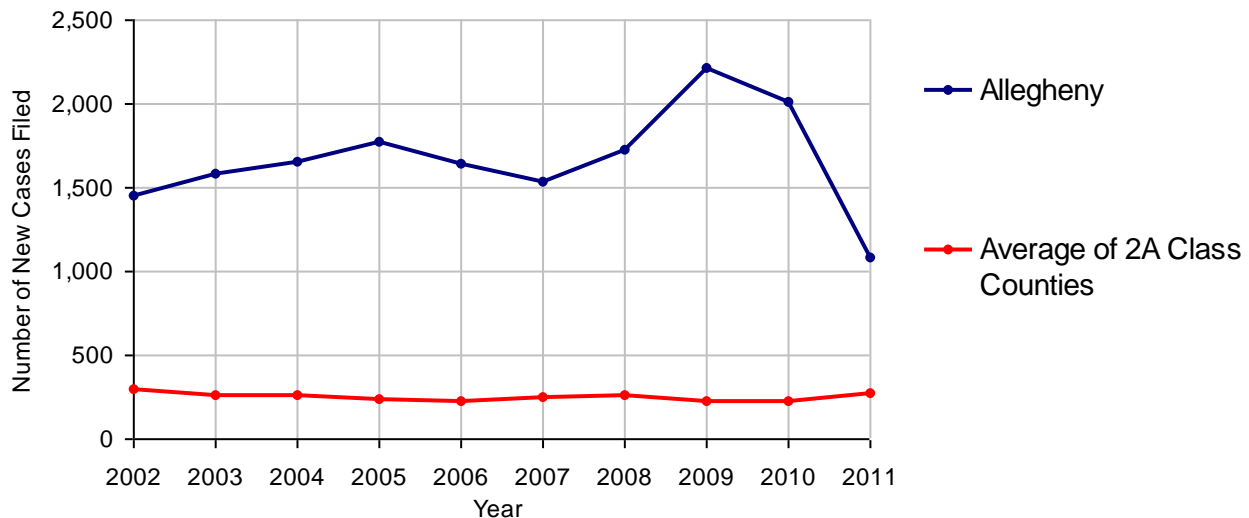
## 2011 Juvenile Dependency - Active Dependent Inventory



	Abuse/ Neglect	Status Offenses	Total
Cases Pending 1/1/2011	257	4	261
New Petitions Filed in 2011	1,066	17	1,083
Other	28	0	28
<b>Total Petitions Available for Processing</b>	<b>1,351</b>	<b>21</b>	<b>1,372</b>
Processed by:			
Adjudicated Dependent			
Judge	740	11	751
Master	0	0	0
Adjudicated NOT Dependent			
Judge	47	0	47
Master	0	0	0
Withdrawn/Dismissed/Inactive	252	7	259
Other	96	0	96
<b>Total Petitions Processed</b>	<b>1,135</b>	<b>18</b>	<b>1,153</b>
<b>Cases Pending 12/31/2011</b>	<b>216</b>	<b>3</b>	<b>219</b>

Data provided by CPCMS

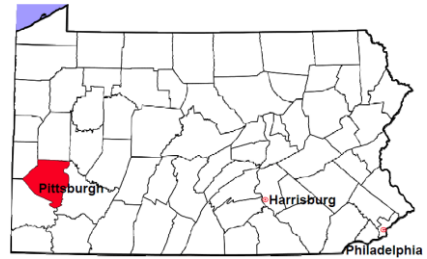
**Abuse/Neglect and Status Offenses New Cases Filed, 2002-2011**



Note: (1) Dependency data for 2002-2010 were collected manually. Dependency data for 2011 were provided by CPCMS. (2) A sharp increase or decrease may reflect changes in practice or counting methods.

# Allegheny County

2011 Population Estimate: 1,227,066  
 Class of County: 2nd  
 No. of Common Pleas Court Judgeships: 43



## 2011 Juvenile Dependency - Adjudicated Dependent Inventory

	Abuse/ Neglect	Status Offenses	Total	
Cases Pending 1/1/2011	2,074	4	2,078	
New Adjudicated Dependent Cases	740	11	751	
Other	56	2	58	
<b>Total Adjudicated Dependent Cases</b>	<b>2,870</b>	<b>17</b>	<b>2,887</b>	
<b><u>Court Supervision Terminated:</u></b>				
Family Reunification	102	0	102	11.2%
Adoption	206	0	206	22.7%
Placement with a Relative/Guardian	364	3	367	40.4%
Aged Out	169	2	171	18.8%
Other Permanency Outcomes*	10	0	10	1.1%
Other**	52	0	52	5.7%
<b>Total Adjudicated Dependent Cases Terminated</b>	<b>903</b>	<b>5</b>	<b>908</b>	<b>100.0%</b>
<b>Cases Pending 12/31/2011</b>	<b>1,967</b>	<b>12</b>	<b>1,979</b>	

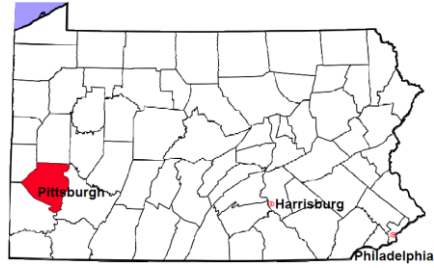
Data provided by CPCMS

\* Other Permanency Outcomes include: adjudicated delinquent, death due to natural causes, emancipation, permanent living arrangement, and parent has come forward.

\*\* Other includes cases where Court Supervision is terminated due to transfer out of jurisdiction, withdrawal and administrative closures.

# Allegheny County

2011 Population Estimate: 1,227,066  
 Class of County: 2nd  
 No. of Common Pleas Court Judgeships: 43

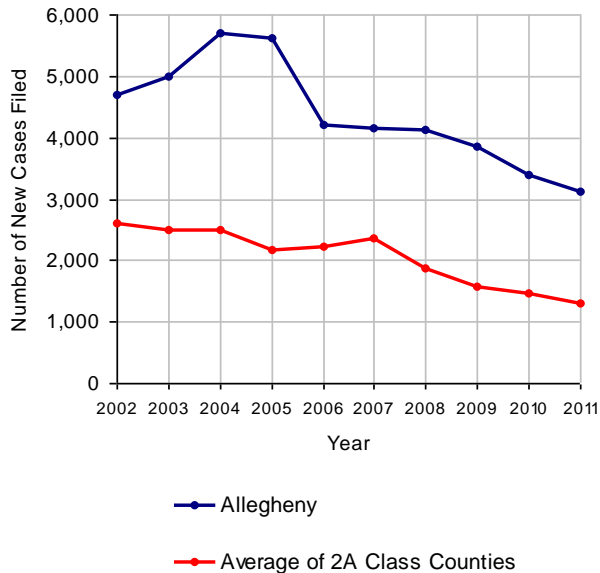


## 2011 Juvenile Delinquency

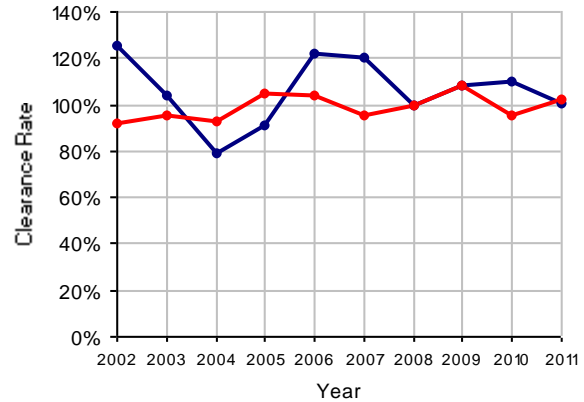
	No. of Cases
Cases Pending 1/1/2011	1,169 <sup>(R)</sup>
New Cases Filed in 2011	3,130
<b>Cases Available for Processing</b>	<b>4,299</b>
Processed By:	
Judge	1,221 38.9%
Non-Judicial Officer	712 22.7%
Other	1,202 38.3%
<b>Cases Processed</b>	<b>3,135 100.0%</b>
<b>Cases Pending 12/31/2011</b>	<b>1,164</b>

(R) - Revised

Juvenile Delinquency New Cases Filed, 2002-2011

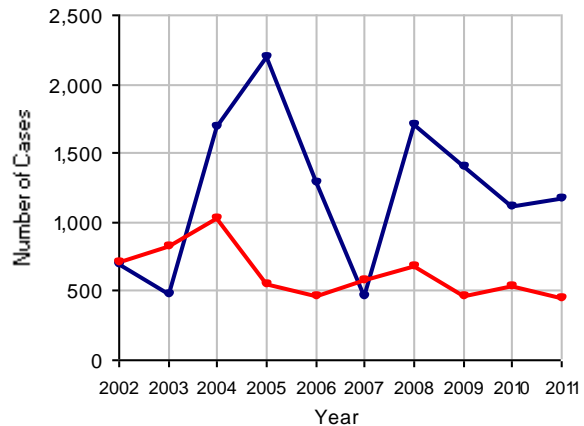


Clearance Rate, 2002-2011



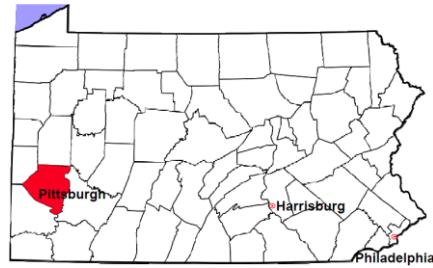
Note: Clearance Rate = Cases Processed / New Cases Filed

Cases Pending at the End of Year, 2002-2011



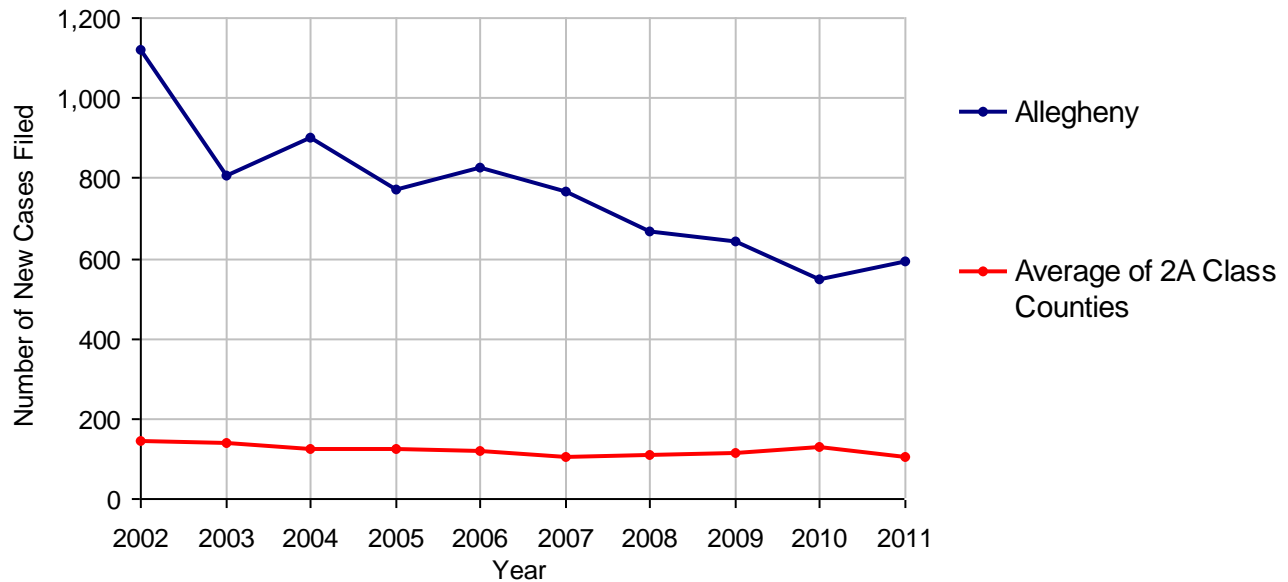
# Allegheny County

2011 Population Estimate: 1,227,066  
 Class of County: 2nd  
 No. of Common Pleas Court Judgeships: 43



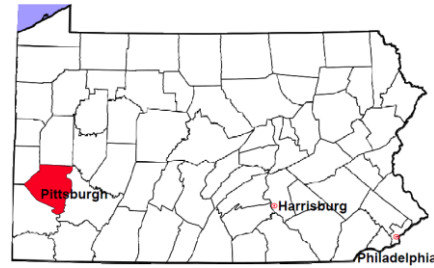
<b>2011 Accounts</b>	<b>No. of Cases</b>	
Cases Pending 1/1/2011	138	
New Cases Filed in 2011	591	
<b>Cases Available for Processing</b>	<b>729</b>	
Processed By:		
Contested before a Judge	0	
Contested before a Non-judicial Officer	0	
Uncontested	538	100.0%
Other	0	
<b>Cases Processed</b>	<b>538</b>	<b>100.0%</b>
<b>Cases Pending 12/31/2011</b>	<b>191</b>	

**Accounts New Cases Filed, 2002-2011**



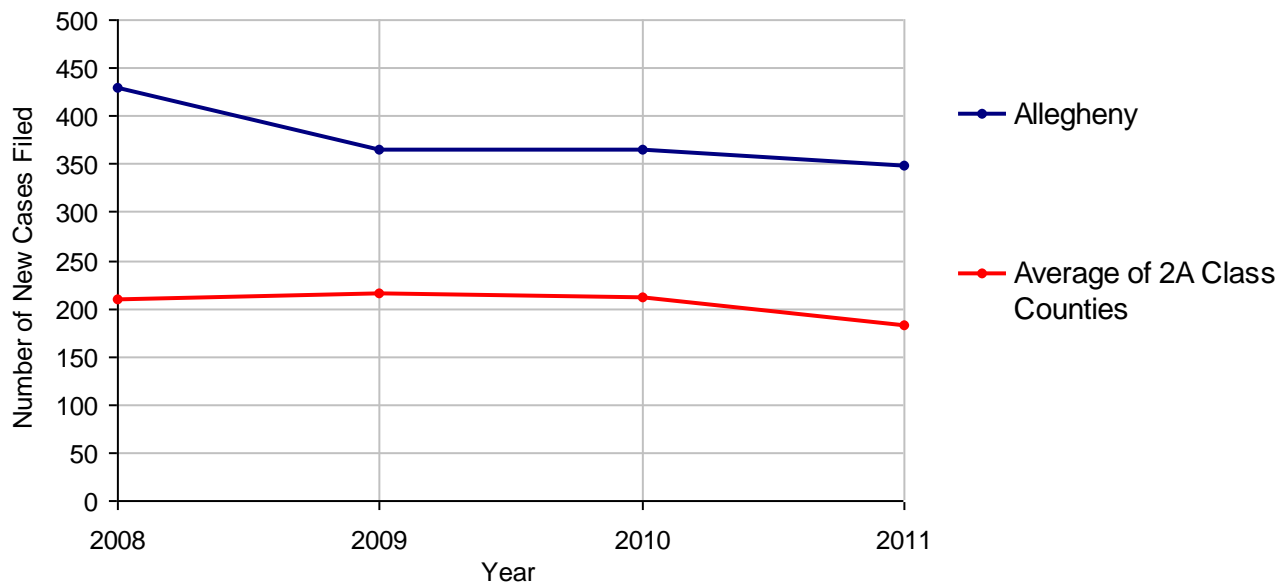
# Allegheny County

2011 Population Estimate: 1,227,066  
 Class of County: 2nd  
 No. of Common Pleas Court Judgeships: 43



<b>2011 Adoptions</b>		<b>No. of Cases</b>	
Cases Pending 1/1/2011		67	
New Cases Filed in 2011		349	
<b>Cases Available for Processing</b>		<b>416</b>	
Processed By:			
Contested before a Judge	Granted	0	
	Denied	0	
Uncontested	Granted	332	100.0%
	Denied	0	
Other		0	
<b>Cases Processed</b>		<b>332</b>	<b>100.0%</b>
<b>Cases Pending 12/31/2011</b>		<b>84</b>	

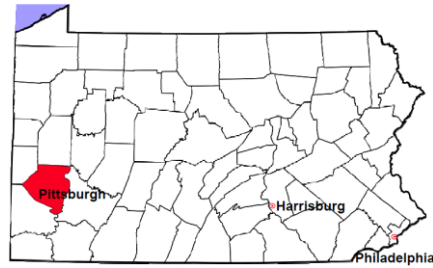
**Adoptions New Cases Filed, 2008-2011**



Note: Prior to 2008, each petition was counted as one new case, regardless of the number of children listed on the petition. Starting in 2008, each child listed on a petition is counted as a separate case. Therefore, statistics for the years since 2008 should not be compared to those for the years prior to 2008.

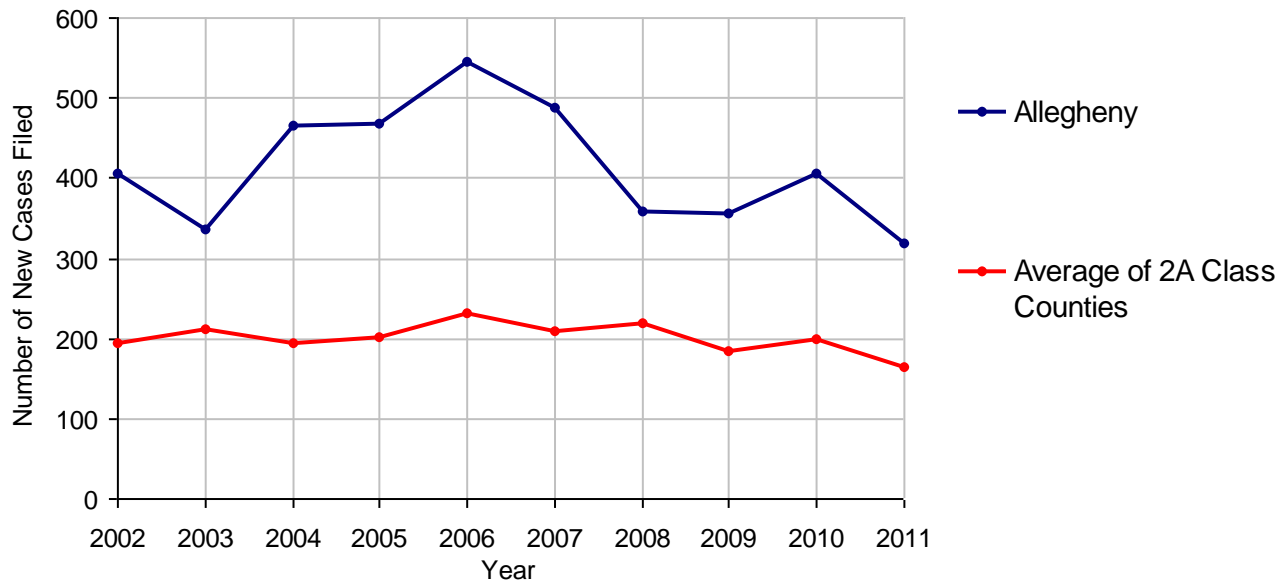
# Allegheny County

2011 Population Estimate: 1,227,066  
 Class of County: 2nd  
 No. of Common Pleas Court Judgeships: 43



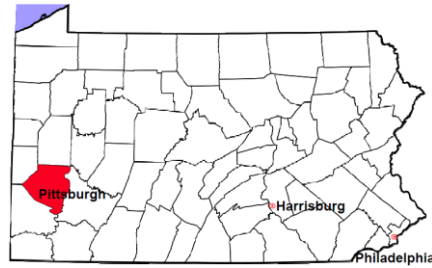
<b>2011 Relinquishments/Terminations</b>		<b>No. of Cases</b>
Cases Pending 1/1/2011		313
New Cases Filed in 2011		318
<b>Cases Available for Processing</b>		<b>631</b>
Processed By:		
Contested before a Judge		126 37.8%
Uncontested		177 53.2%
Other		30 9.0%
<b>Cases Processed</b>		<b>333 100.0%</b>
<b>Cases Pending 12/31/2011</b>		<b>298</b>

**Relinquishments/Terminations New Cases Filed, 2002-2011**



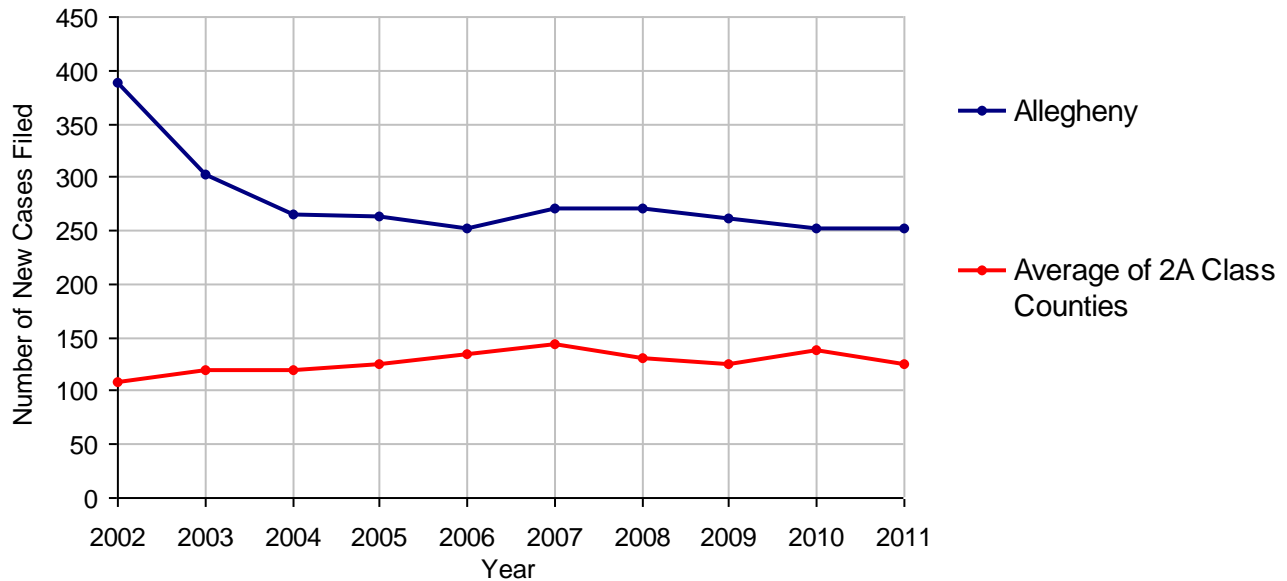
# Allegheny County

2011 Population Estimate: 1,227,066  
 Class of County: 2nd  
 No. of Common Pleas Court Judgeships: 43



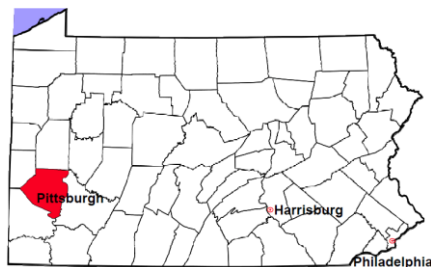
<b>2011 Appointment of Guardians</b>		<b>No. of Cases</b>
Cases Pending 1/1/2011		1
New Cases Filed in 2011		253
<b>Cases Available for Processing</b>		<b>254</b>
Processed By:		
Contested before a Judge	32	12.6%
Uncontested	221	87.4%
Other	0	
<b>Cases Processed</b>	<b>253</b>	<b>100.0%</b>
<b>Cases Pending 12/31/2011</b>		<b>1</b>

**Appointment of Guardians New Cases Filed, 2002-2011**



# Allegheny County

2011 Population Estimate: 1,227,066  
Class of County: 2nd  
No. of Common Pleas Court Judgeships: 43



---

## 2011 Jury Activity and Performance Measures

---

A. Juror Days	22,162	
B. Number Sent to Voir Dire	16,646	
Voir Dire Attendance Rate (B/A * 100)		75.1%
C. Number of Jurors Selected	5,280	
Juror Selection Rate (C/B * 100)		31.7%

---

Note: In mid-2011, AOPC began utilizing the National Center for State Courts' Jury Managers' Toolbox for collecting jury data. This has resulted in limited jury performance measures being reported for 2011. Additional data will be available in 2012.