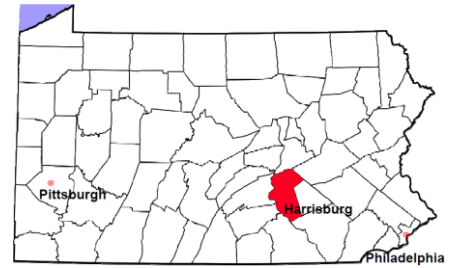


Dauphin County

2011 Population Estimate: 268,977
 Class of County: 3rd
 No. of Common Pleas Court Judgeships: 10



2011 Criminal No. of Cases

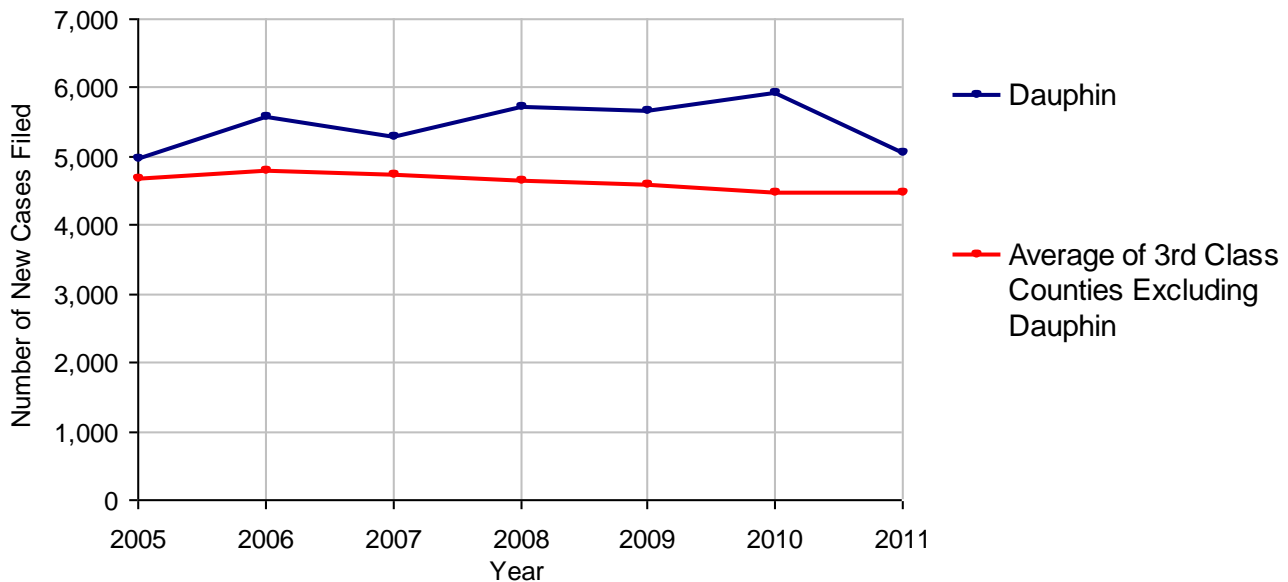
Cases Pending 1/1/2011	4,285
New Cases Filed in 2011	5,060
Reopened Cases	277
Cases Available for Disposition	9,622
Disposed by:	
Withdrawn/Dismissed	439 8.0%
ARD	886 16.1%
Guilty Plea	3,670 66.8%
Non-Jury Trial	35 0.6%
Jury Trial	84 1.5%
Inactive	327 6.0%
Other	51 0.9%
Total Cases Disposed	5,492 100.0%
Cases Pending 12/31/2011	4,130
Cases Awaiting Sentencing	109



Age of Pending Cases as of 12/31/2011		
0-60 Days	845	20.5%
61-120 Days	683	16.5%
121-180 Days	643	15.6%
181-240 Days	412	10.0%
241-300 Days	354	8.6%
301-360 Days	306	7.4%
Over 360 Days	887	21.5%
Total	4,130	100.0%

Data provided by CPCMS

Criminal New Cases Filed, 2005-2011



Dauphin County

2011 Population Estimate: 268,977

Class of County: 3rd

No. of Common Pleas Court Judgeships: 10



2011 Criminal - New Cases by Case Type



Case Type	Felony	Misdemeanor	Summary /Ungraded	Total
Person	446	456	4	906
Property	545	771	14	1,330
Drug	347	525	1	873
Weapon	122	16	0	138
Public Order	271	450	3	724
Motor Vehicle - DWI/DUI	0	1,066	0	1,066
Motor Vehicle - Other	1	21	0	22
Other	0	1	0	1
Total	1,732	3,306	22	5,060
	34.2%	65.3%	0.4%	100.0%

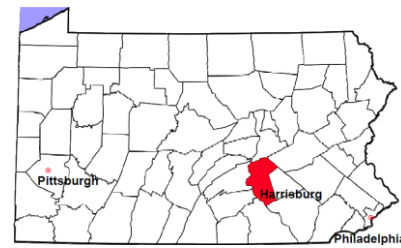
Data provided by CPCMS

Dauphin County

2011 Population Estimate: 268,977

Class of County: 3rd

No. of Common Pleas Court Judgeships: 10

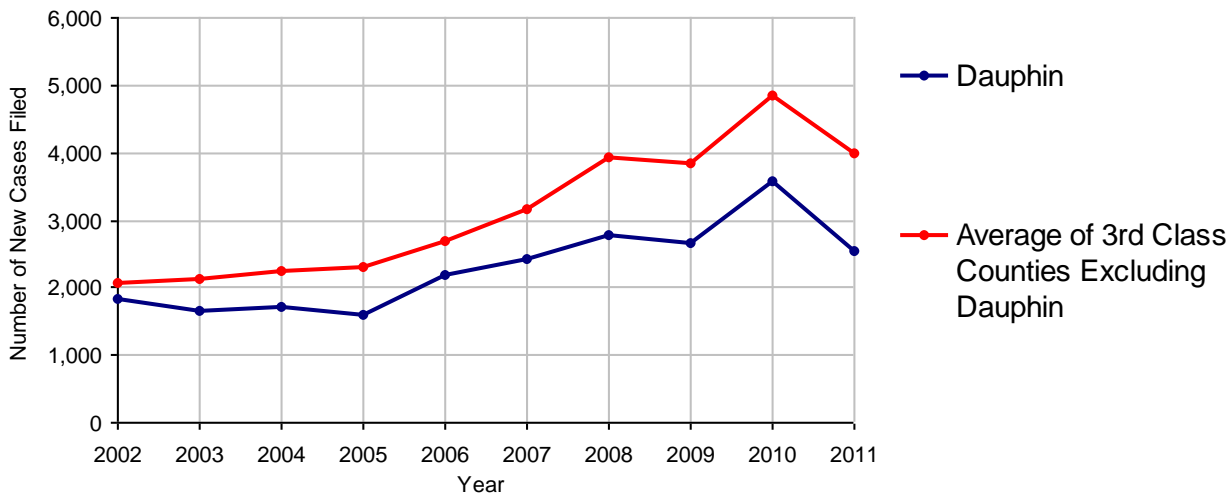


2011 Civil	Civil Action	Other	Total
Cases Pending 1/1/2011	4,548	2,345	6,893
Docketed Cases	1,496	1,052	2,548
Arbitration Appeals	13	5	18
Transferred In	13	3	16
Returned to Active	15	3	18
Cases Available for Processing	6,085	3,408	9,493
Disposed By:			
Default Judgments	631	549	1,180
Cases Decided by Arbitration Board	61	19	80
Dispositive Motions	66	47	113
Settlements	473	135	608
Moved to Inactive Status	45	20	65
Transferred/Withdrawn	97	32	129
Pa.R.J.A. 1901 Administrative Purge	512	284	796
Other	770	290	1,060
Jury Trial	21	0	21
Non-Jury Trial	12	113	125
Total Cases Disposed	2,688	1,489	4,177
Cases Pending 12/31/2011	3,397	1,919	5,316

Age of Pending Cases as of 12/31/2011 (Civil Action Only)

0-6 months	483	14.2%
7-12 months	418	12.3%
13-18 months	374	11.0%
19-24 months	316	9.3%
25-30 months	327	9.6%
31-36 months	272	8.0%
37-42 months	274	8.1%
43-48 months	247	7.3%
49-54 months	52	1.5%
55-60 months	39	1.1%
61-66 months	40	1.2%
67-72 months	36	1.1%
Over 72 months	519	15.3%
Total	3,397	100.0%

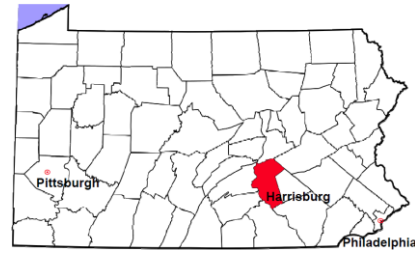
Docketed Cases, 2002-2011



Note: Prior to June 2010, docketed cases under the "Other" category were not reported. The reporting of these cases starting from June 2010 may contribute to an increase in docketed cases from 2009 to 2010.

Dauphin County

2011 Population Estimate: 268,977
 Class of County: 3rd
 No. of Common Pleas Court Judgeships: 10



2011 Civil - Docketed Cases Listed by Case Type

TORT (does not include mass tort)

Intentional	17
Malicious Prosecution	0
Motor Vehicle	276
Nuisance	4
Premise Liability	77
Product Liability	3
Slander/Libel/Defamation	6
Other	73

MASS TORT

Asbestos	36
Tobacco	0
Toxic Tort - DES	0
Toxic Tort - Implant	0
Toxic Waste	0
Other	0

PROFESSIONAL LIABILITY

Dental	1
Legal	4
Medical Malpractice	51
Other	7

CONTRACT

(does not include judgments)

Buyer Plaintiff	16
Debt Collection:	
Credit Card	467
Debt Collection: Other	310
Employment Dispute:	
Discrimination	5
Employment Dispute: Other	11
Other	126

REAL PROPERTY

Ejectment*	68
Eminent Domain/ Condemnation*	8
Ground Rent	0
Landlord/Tenant Dispute	6
Mortgage Forclosure:	
Residential*	573
Commercial*	24
Partition of Real Property*	2
Quiet Title*	30
Other*	19

CIVIL APPEALS

Administrative Agencies

Board of Assessment*	54
Board of Elections*	10
Dept. of Transportation*	79
Zoning Board*	1
Statutory Appeal - Other*	5
Other*	7

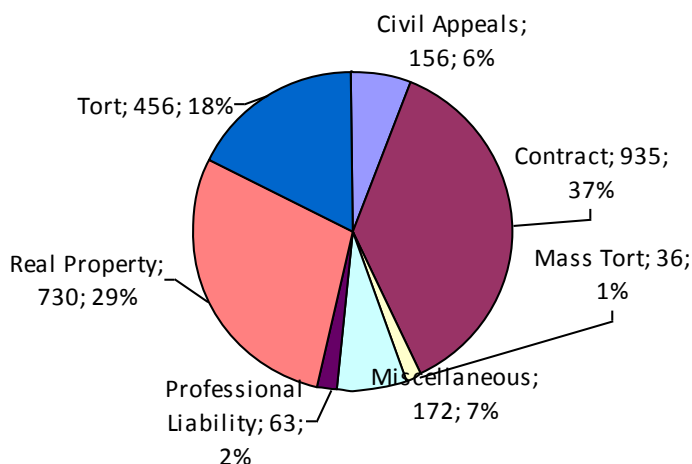
MISCELLANEOUS

Common Law/ Statutory Arbitration*	3
Declaratory Judgment*	22
Mandamus*	7
Non-Domestic Relations Restraining Order*	0
Quo Warranto*	0
Replevin*	20
Other*	120

TOTAL DOCKETED CASES:

2,548

* Civil Other



Of the Docketed Cases:

Pro Se Filings:	255	10.0%
Class Action Suits:	7	0.3%
MDJ Appeals:	322	12.6%

Dauphin County

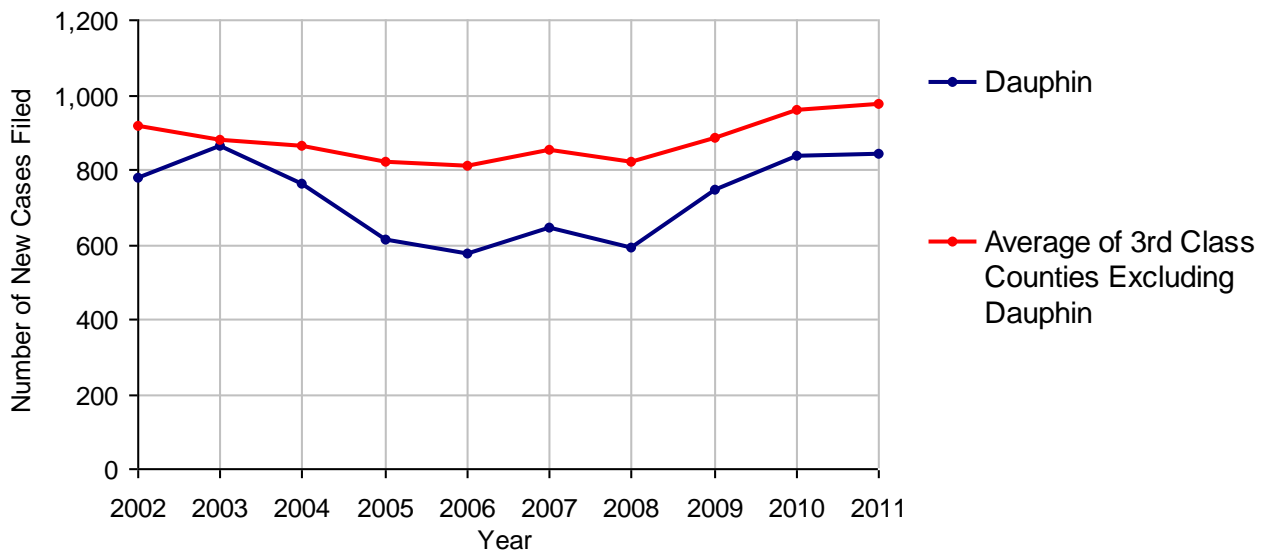
2011 Population Estimate: 268,977
 Class of County: 3rd
 No. of Common Pleas Court Judgeships: 10



2011 Protection From Abuse

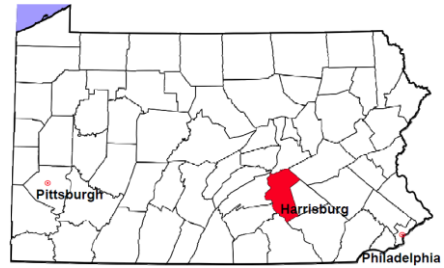
	No. of Petitions
Cases Pending 1/1/2011	31
New Cases Filed in 2011	842
<i>Of these, Petitions Requesting Temporary Orders: 842 (100.0%)</i>	
<i>Temporary Orders DENIED: 88 (10.5%), Temporary Orders GRANTED: 754 (89.5%)</i>	
Cases Available for Processing	873
Processed By:	
Temporary Order DENIED After Ex Parte Hearing and No Evidentiary Hearing Scheduled	9 1.1%
Temporary Order DISMISSED After Evidentiary Hearing and No Final Order Entered	140 17.1%
Final Order DENIED After Evidentiary Hearing Before a Judge	4 0.5%
Final Order GRANTED After Evidentiary Hearing Before a Judge	132 16.1%
Plaintiff Did Not Appear For Evidentiary Hearing	183 22.4%
Final Order by STIPULATION OR AGREEMENT Between the Parties	248 30.3%
Petition WITHDRAWN by Plaintiff	101 12.3%
TRANSFERRED to Another Jurisdiction	0
DECEASED Party	0
Other	1 0.1%
Cases Processed	818 100.0%
Cases Pending 12/31/2011	55

PFA New Cases Filed, 2002-2011

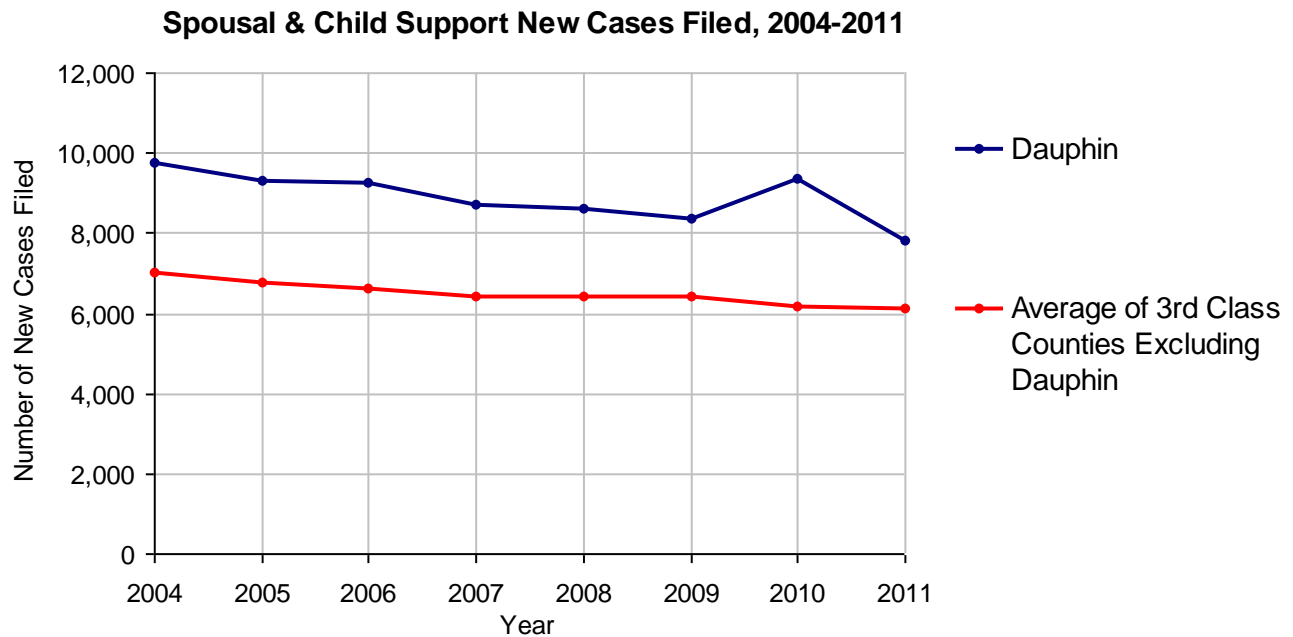


Dauphin County

2011 Population Estimate: 268,977
 Class of County: 3rd
 No. of Common Pleas Court Judgeships: 10



2011 Spousal & Child Support	No. of Petitions	
Cases Pending 1/1/2011	2,686	
New Cases Filed in 2011	7,829	
Dockets Transferred In (+)	105	
Dockets Transferred Out (-)	75	
Cases Available for Processing	10,545	
Processed By:		
Judge	402	5.1%
Intake Officer	7,505	94.9%
Hearing Officer	0	
Other	0	
Cases Processed	7,907	100.0%
Cases Pending 12/31/2011	2,638	

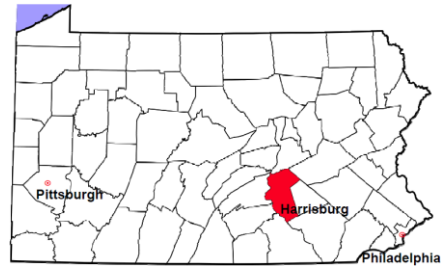


Dauphin County

2011 Population Estimate: 268,977

Class of County: 3rd

No. of Common Pleas Court Judgeships: 10



2011 Custody/Partial Custody/Visitation

No. of
Petitions

Cases Pending 1/1/2011

211

New Cases Filed in 2011

1,191

Cases Available for Processing

1,402

Processed By:

Judge

147

12.5%

Non-Judicial Officer

665

56.5%

Other

365

31.0%

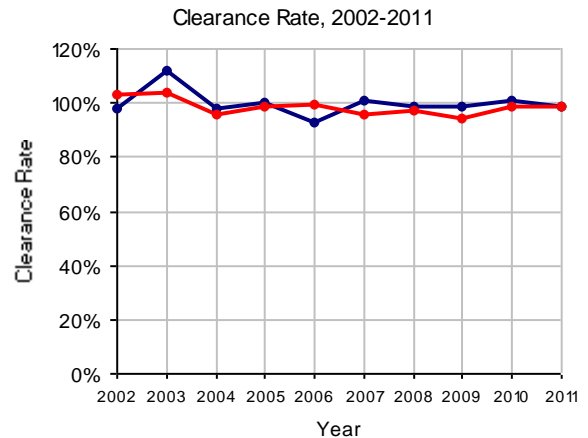
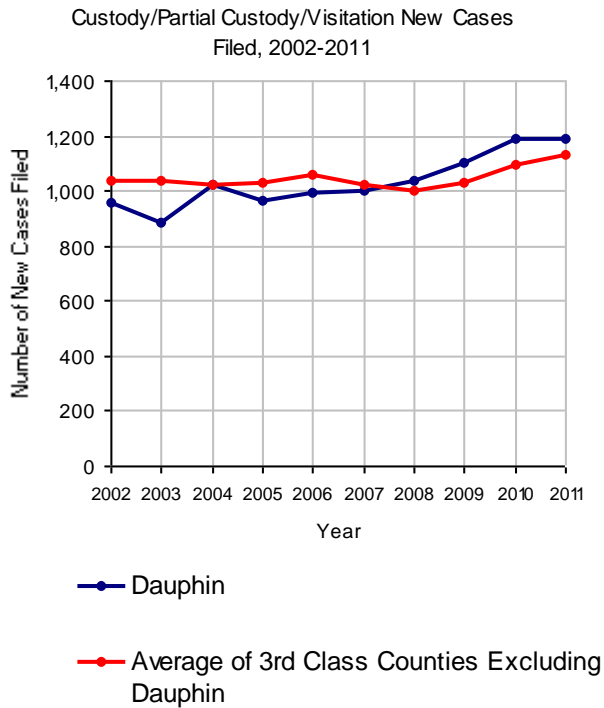
Cases Processed

1,177

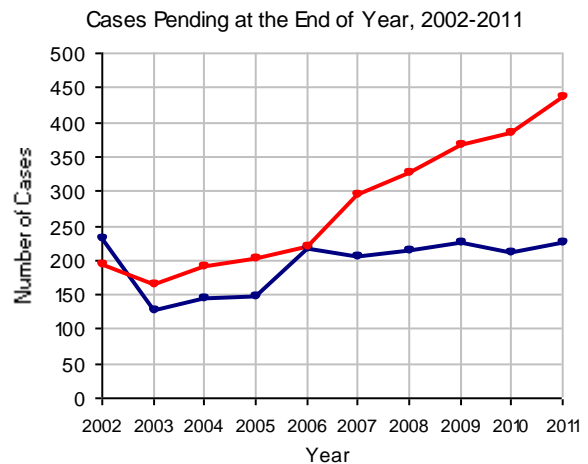
100.0%

Cases Pending 12/31/2011

225

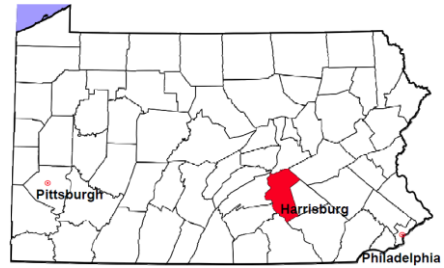


Note: Clearance Rate = Cases Processed / New Cases Filed



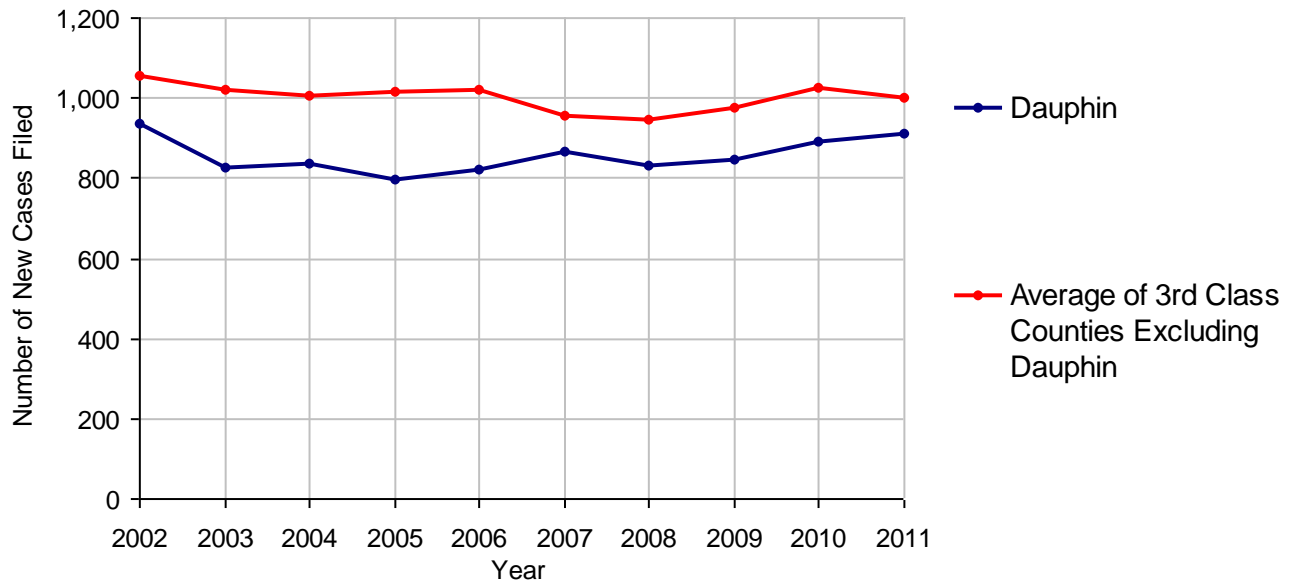
Dauphin County

2011 Population Estimate: 268,977
 Class of County: 3rd
 No. of Common Pleas Court Judgeships: 10



2011 Divorce	No. of Petitions
Cases Pending 1/1/2011	1,308
New Cases Filed in 2011	911
Cases Available for Processing	2,219
Processed By:	
Contested Before a Judge	6 0.7%
Contested Before a Master	14 1.5%
Uncontested	726 79.4%
Other	168 18.4%
Cases Processed	914 100.0%
Cases Pending 12/31/2011	1,305

Divorce New Cases Filed, 2002-2011



Dauphin County

2011 Population Estimate: 268,977
 Class of County: 3rd
 No. of Common Pleas Court Judgeships: 10



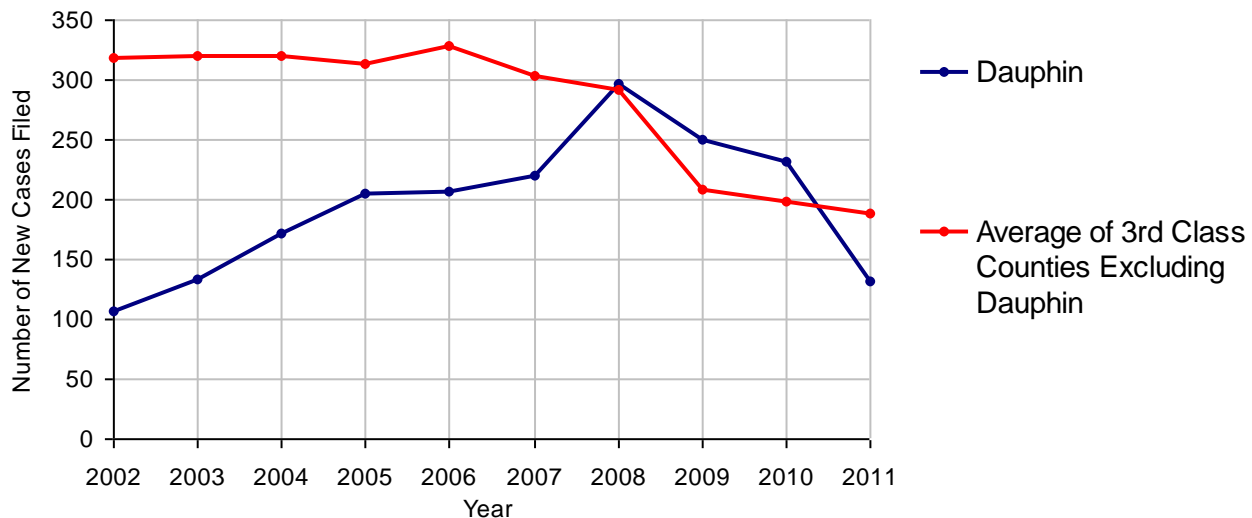
2011 Juvenile Dependency - Active Dependent Inventory



	Abuse/ Neglect	Status Offenses	Total
Cases Pending 1/1/2011	18	0	18
New Petitions Filed in 2011	113	18	131
Other	0	0	0
Total Petitions Available for Processing	131	18	149
Processed by:			
Adjudicated Dependent			
Judge	2	0	2
Master	115	18	133
Adjudicated NOT Dependent			
Judge	0	0	0
Master	1	0	1
Withdrawn/Dismissed/Inactive	0	0	0
Other	8	0	8
Total Petitions Processed	126	18	144
Cases Pending 12/31/2011	5	0	5

Data provided by CPCMS

Abuse/Neglect and Status Offenses New Cases Filed, 2002-2011



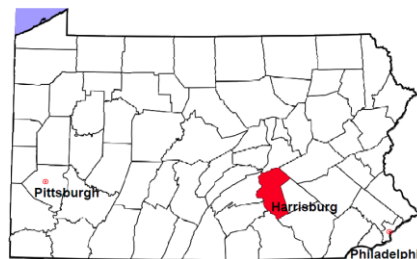
Note: Dependency data for 2002-2010 were collected manually. Dependency data for 2011 were provided by CPCMS.

Dauphin County

2011 Population Estimate: 268,977

Class of County: 3rd

No. of Common Pleas Court Judgeships: 10



2011 Juvenile Dependency - Adjudicated Dependent Inventory

	Abuse/ Neglect	Status Offenses	Total	
Cases Pending 1/1/2011	469	16	485	
New Adjudicated Dependent Cases	117	18	135	
Other	14	0	14	
Total Adjudicated Dependent Cases	600	34	634	
<u>Court Supervision Terminated:</u>				
Family Reunification	83	9	92	51.4%
Adoption	34	0	34	19.0%
Placement with a Relative/Guardian	22	0	22	12.3%
Aged Out	27	0	27	15.1%
Other Permanency Outcomes*	0	1	1	0.6%
Other**	3	0	3	1.7%
Total Adjudicated Dependent Cases Terminated	169	10	179	100.0%
Cases Pending 12/31/2011	431	24	455	

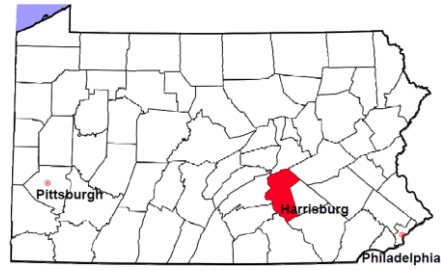
Data provided by CPCMS

* Other Permanency Outcomes include: adjudicated delinquent, death due to natural causes, emancipation, permanent living arrangement, and parent has come forward.

** Other includes cases where Court Supervision is terminated due to transfer out of jurisdiction, withdrawal and administrative closures.

Dauphin County

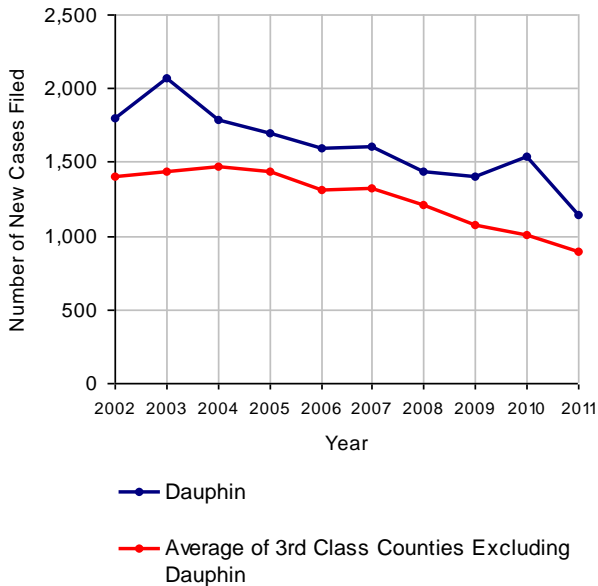
2011 Population Estimate: 268,977
 Class of County: 3rd
 No. of Common Pleas Court Judgeships: 10



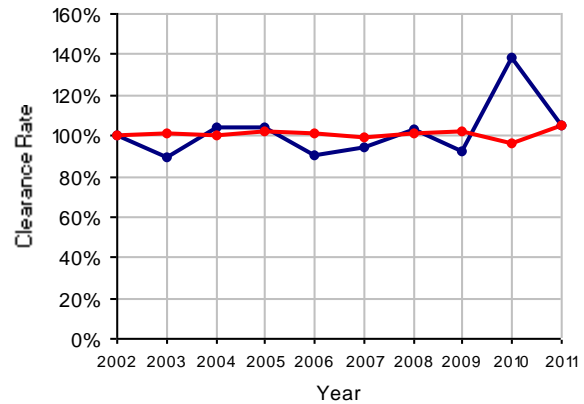
2011 Juvenile Delinquency

	No. of Cases
Cases Pending 1/1/2011	598
New Cases Filed in 2011	1,146
Cases Available for Processing	1,744
Processed By:	
Judge	429 35.8%
Non-Judicial Officer	469 39.1%
Other	301 25.1%
Cases Processed	1,199 100.0%
Cases Pending 12/31/2011	545

Juvenile Delinquency New Cases Filed, 2002-2011

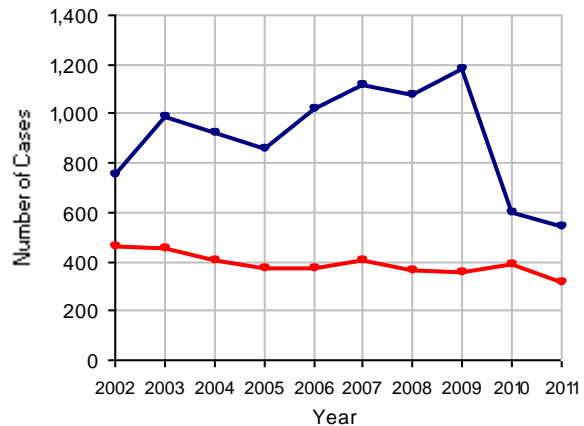


Clearance Rate, 2002-2011



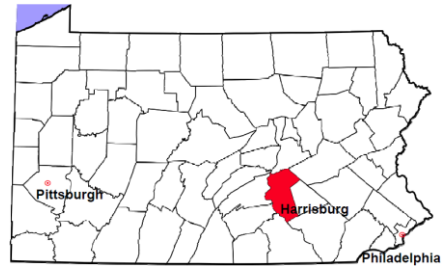
Note: Clearance Rate = Cases Processed / New Cases Filed

Cases Pending at the End of Year, 2002-2011



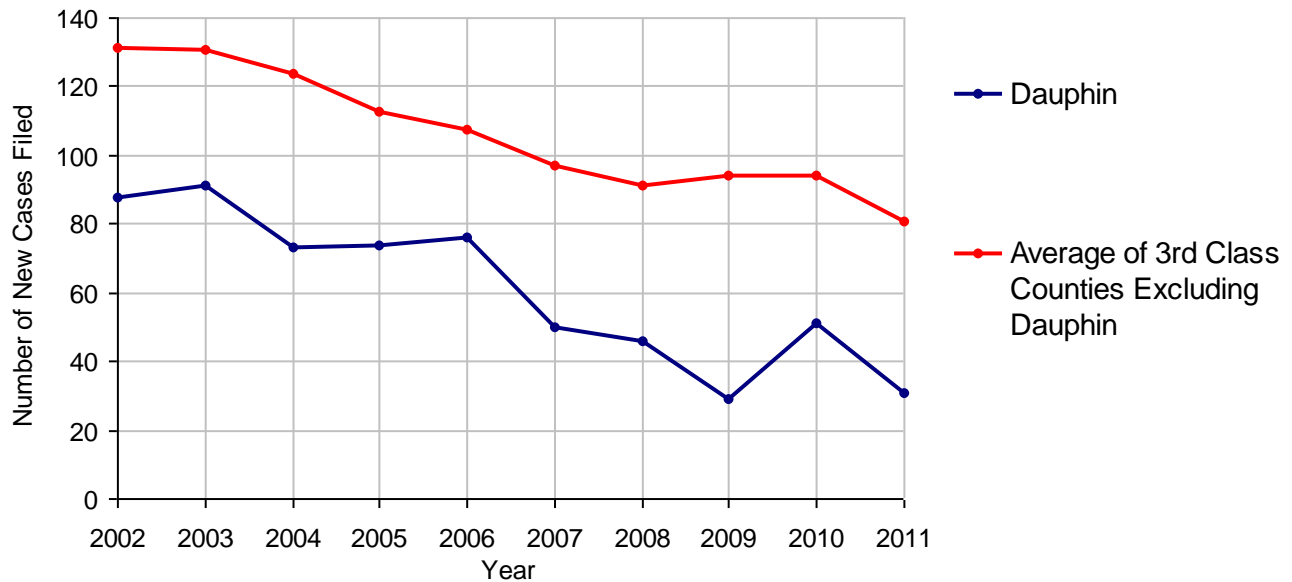
Dauphin County

2011 Population Estimate: 268,977
 Class of County: 3rd
 No. of Common Pleas Court Judgeships: 10



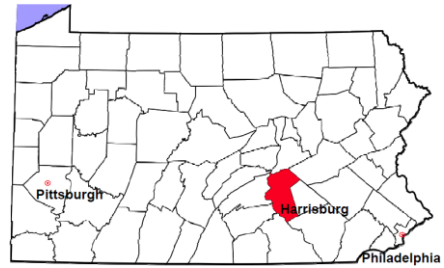
2011 Accounts	No. of Cases
Cases Pending 1/1/2011	34
New Cases Filed in 2011	31
Cases Available for Processing	65
Processed By:	
Contested before a Judge	2 6.3%
Contested before a Non-judicial Officer	0
Uncontested	30 93.8%
Other	0
Cases Processed	32 100.0%
Cases Pending 12/31/2011	33

Accounts New Cases Filed, 2002-2011



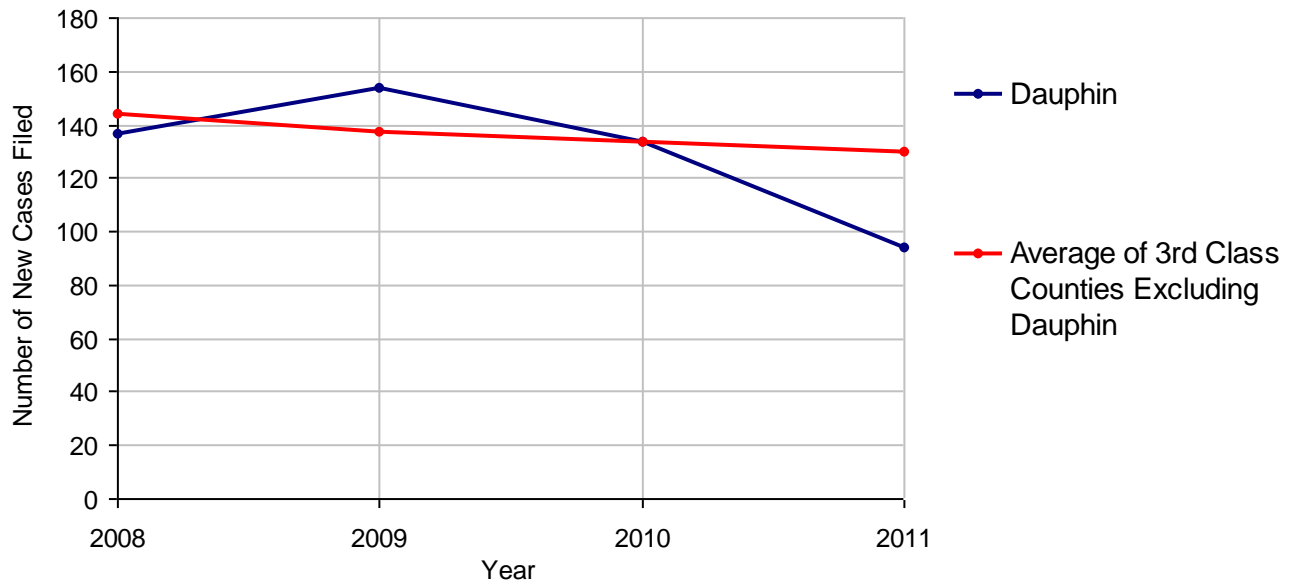
Dauphin County

2011 Population Estimate: 268,977
 Class of County: 3rd
 No. of Common Pleas Court Judgeships: 10



2011 Adoptions		No. of Cases	
Cases Pending 1/1/2011		24	
New Cases Filed in 2011		94	
Cases Available for Processing		118	
Processed By:			
Contested before a Judge	Granted	0	
	Denied	0	
Uncontested	Granted	97	100.0%
	Denied	0	
Other		0	
Cases Processed		97	100.0%
Cases Pending 12/31/2011		21	

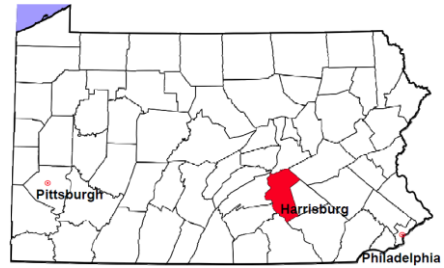
Adoptions New Cases Filed, 2008-2011



Note: Prior to 2008, each petition was counted as one new case, regardless of the number of children listed on the petition. Starting in 2008, each child listed on a petition is counted as a separate case. Therefore, statistics for the years since 2008 should not be compared to those for the years prior to 2008.

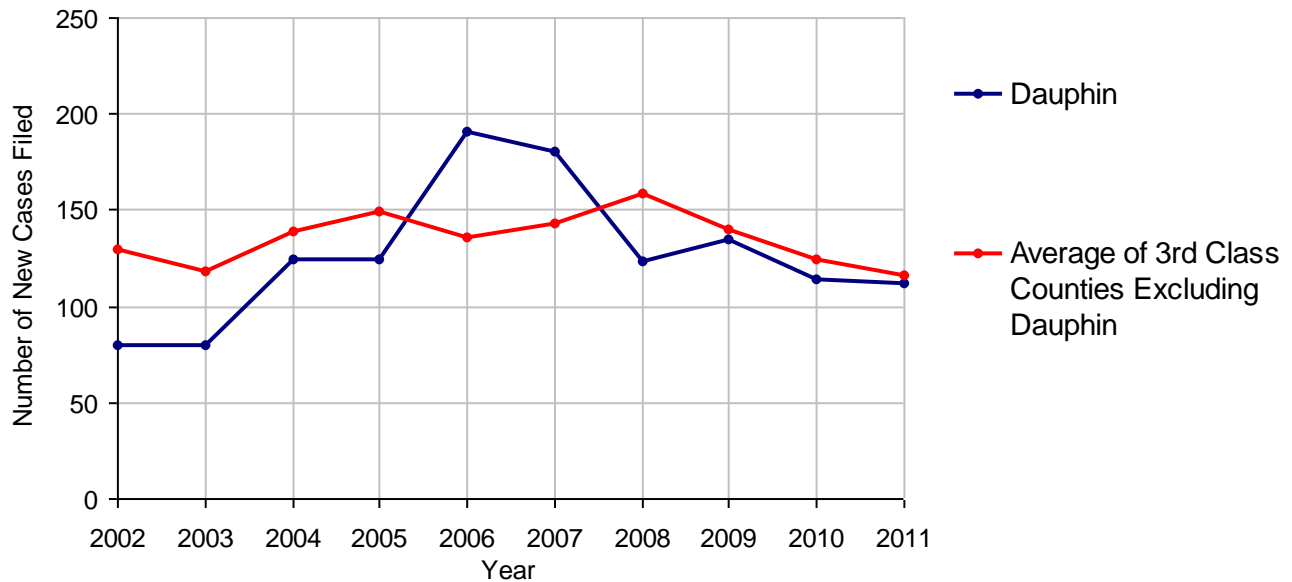
Dauphin County

2011 Population Estimate: 268,977
 Class of County: 3rd
 No. of Common Pleas Court Judgeships: 10



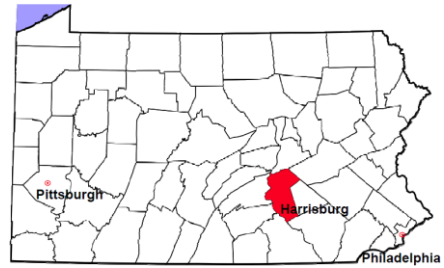
2011 Relinquishments/Terminations	No. of Cases
Cases Pending 1/1/2011	56
New Cases Filed in 2011	112
Cases Available for Processing	168
Processed By:	
Contested before a Judge	25 25.3%
Uncontested	74 74.7%
Other	0
Cases Processed	99 100.0%
Cases Pending 12/31/2011	69

Relinquishments/Terminations New Cases Filed, 2002-2011



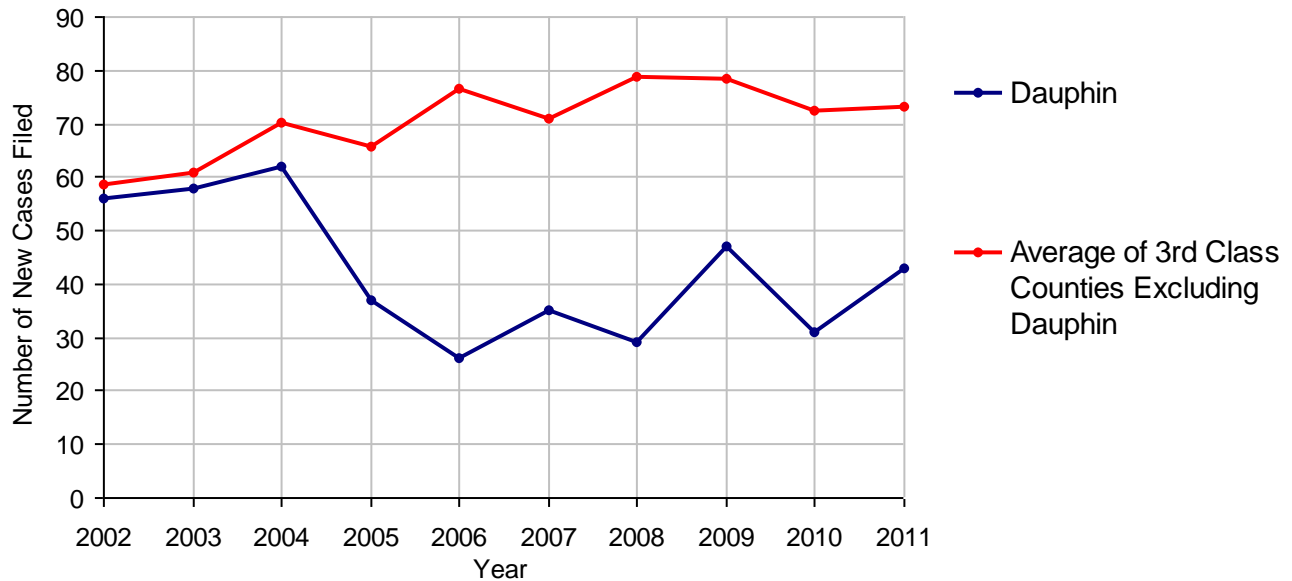
Dauphin County

2011 Population Estimate: 268,977
 Class of County: 3rd
 No. of Common Pleas Court Judgeships: 10



2011 Appointment of Guardians	No. of Cases
Cases Pending 1/1/2011	14
New Cases Filed in 2011	43
Cases Available for Processing	57
Processed By:	
Contested before a Judge	1 2.4%
Uncontested	36 85.7%
Other	5 11.9%
Cases Processed	42 100.0%
Cases Pending 12/31/2011	15

Appointment of Guardians New Cases Filed, 2002-2011

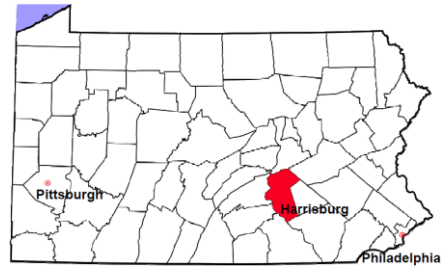


Dauphin County

2011 Population Estimate: 268,977

Class of County: 3rd

No. of Common Pleas Court Judgeships: 10



2011 Jury Activity and Performance Measures

A. Juror Days	4,235
B. Number Sent to Voir Dire	3,778
Voir Dire Attendance Rate (B/A * 100)	89.2%
C. Number of Jurors Selected	1,581
Juror Selection Rate (C/B * 100)	41.8%

Note: In mid-2011, AOPC began utilizing the National Center for State Courts' Jury Managers' Toolbox for collecting jury data. This has resulted in limited jury performance measures being reported for 2011. Additional data will be available in 2012.