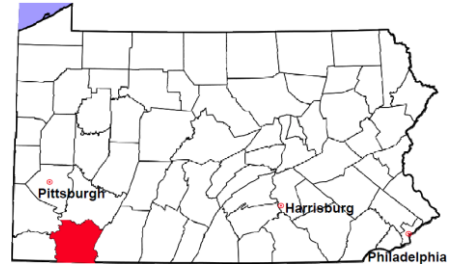


# Fayette County

2011 Population Estimate: 136,097  
 Class of County: 4th  
 No. of Common Pleas Court Judgeships: 5



2011 Criminal	No. of Cases
---------------	--------------

Cases Pending 1/1/2011	1,135
New Cases Filed in 2011	2,375
Reopened Cases	135
<b>Cases Available for Disposition</b>	<b>3,645</b>

Disposed by:		
Withdrawn/Dismissed	133	6.2%
ARD	328	15.2%
Guilty Plea	1,471	68.4%
Non-Jury Trial	4	0.2%
Jury Trial	88	4.1%
Inactive	53	2.5%
Other	74	3.4%
<b>Total Cases Disposed</b>	<b>2,151</b>	<b>100.0%</b>

**Cases Pending 12/31/2011**                      **1,494**

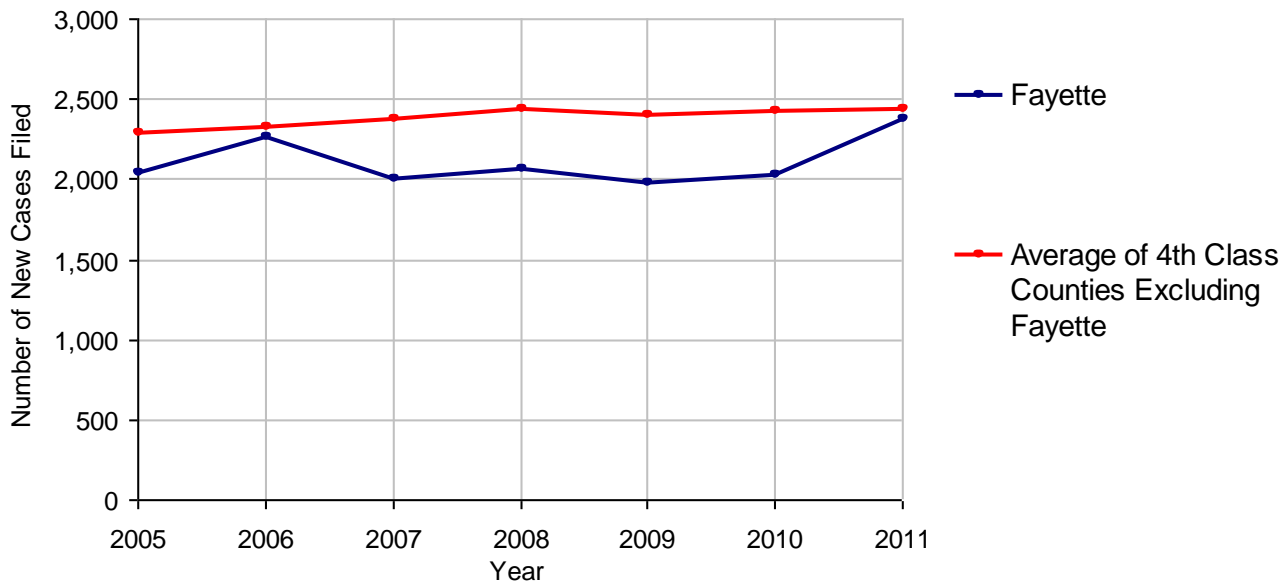
Cases Awaiting Sentencing                      276

Data provided by CPCMS



Age of Pending Cases as of 12/31/2011		
0-60 Days	303	20.3%
61-120 Days	351	23.5%
121-180 Days	268	17.9%
181-240 Days	197	13.2%
241-300 Days	170	11.4%
301-360 Days	96	6.4%
Over 360 Days	109	7.3%
<b>Total</b>	<b>1,494</b>	<b>100.0%</b>

**Criminal New Cases Filed, 2005-2011**

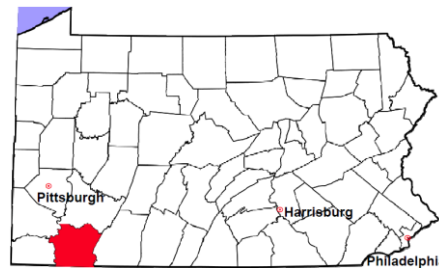


# Fayette County

2011 Population Estimate: 136,097

Class of County: 4th

No. of Common Pleas Court Judgeships: 5



## 2011 Criminal - New Cases by Case Type



Case Type	Felony	Misdemeanor	Summary /Ungraded	Total
Person	102	161	0	263
Property	315	332	0	647
Drug	158	208	0	366
Weapon	23	10	0	33
Public Order	52	134	0	186
Motor Vehicle - DWI/DUI	0	844	0	844
Motor Vehicle - Other	1	35	0	36
Other	0	0	0	0
<b>Total</b>	<b>651</b>	<b>1,724</b>	<b>0</b>	<b>2,375</b>
	<b>27.4%</b>	<b>72.6%</b>		<b>100.0%</b>

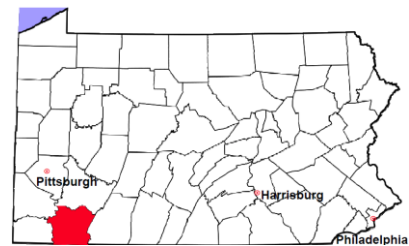
Data provided by CPCMS

# Fayette County

2011 Population Estimate: 136,097

Class of County: 4th

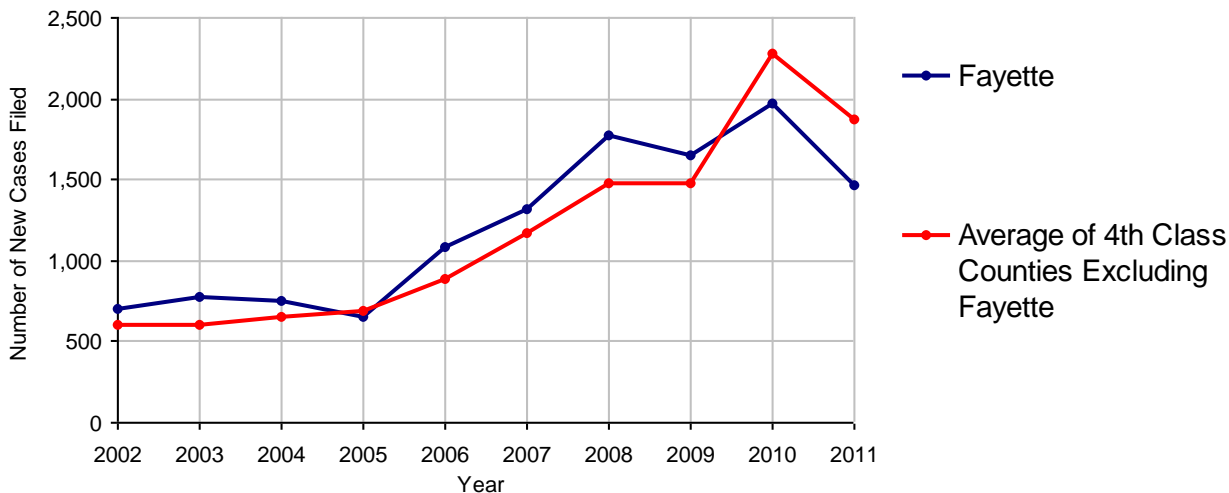
No. of Common Pleas Court Judgeships: 5



2011 Civil	Civil Action	Other	Total
Cases Pending 1/1/2011	2,026	1,139	3,165
Docketed Cases	1,045	426	1,471
Arbitration Appeals	10	3	13
Transferred In	0	0	0
Returned to Active	2	1	3
<b>Cases Available for Processing</b>	<b>3,083</b>	<b>1,569</b>	<b>4,652</b>
Disposed By:			
Default Judgments	456	135	591
Cases Decided by Arbitration Board	42	5	47
Dispositive Motions	16	16	32
Settlements	510	101	611
Moved to Inactive Status	2	4	6
Transferred/Withdrawn	24	7	31
Pa.R.J.A. 1901 Administrative Purge	3	3	6
Other	106	58	164
Jury Trial	5	0	5
Non-Jury Trial	2	3	5
<b>Total Cases Disposed</b>	<b>1,166</b>	<b>332</b>	<b>1,498</b>
<b>Cases Pending 12/31/2011</b>	<b>1,917</b>	<b>1,237</b>	<b>3,154</b>

Age of Pending Cases as of 12/31/2011 (Civil Action Only)		
0-6 months	409	21.3%
7-12 months	239	12.5%
13-18 months	271	14.1%
19-24 months	177	9.2%
25-30 months	209	10.9%
31-36 months	165	8.6%
37-42 months	151	7.9%
43-48 months	59	3.1%
49-54 months	36	1.9%
55-60 months	55	2.9%
61-66 months	41	2.1%
67-72 months	31	1.6%
Over 72 months	74	3.9%
<b>Total</b>	<b>1,917</b>	<b>100.0%</b>

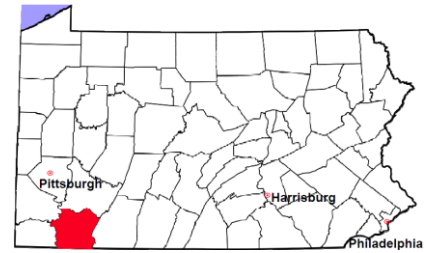
Docketed Cases, 2002-2011



Note: Prior to June 2010, docketed cases under the "Other" category were not reported. The reporting of these cases starting from June 2010 may contribute to an increase in docketed cases from 2009 to 2010.

# Fayette County

2011 Population Estimate: 136,097  
 Class of County: 4th  
 No. of Common Pleas Court Judgeships: 5



## 2011 Civil - Docketed Cases Listed by Case Type

### TORT (does not include mass tort)

Intentional	11
Malicious Prosecution	2
Motor Vehicle	109
Nuisance	1
Premise Liability	10
Product Liability	6
Slander/Libel/Defamation	2
Other	45

### MASS TORT

Asbestos	0
Tobacco	0
Toxic Tort - DES	0
Toxic Tort - Implant	0
Toxic Waste	0
Other	1

### PROFESSIONAL LIABILITY

Dental	2
Legal	2
Medical Malpractice	9
Other	2

### CONTRACT

(does not include judgments)

Buyer Plaintiff	10
Debt Collection:	
Credit Card	489
Debt Collection: Other	205
Employment Dispute:	
Discrimination	0
Employment Dispute: Other	7
Other	40

### REAL PROPERTY

Ejectment*	34
Eminent Domain/ Condemnation*	22
Ground Rent	0
Landlord/Tenant Dispute	92
Mortgage Forclosures:	
Residential*	177
Commercial*	2
Partition of Real Property*	6
Quiet Title*	23
Other*	32

### CIVIL APPEALS

*Administrative Agencies*

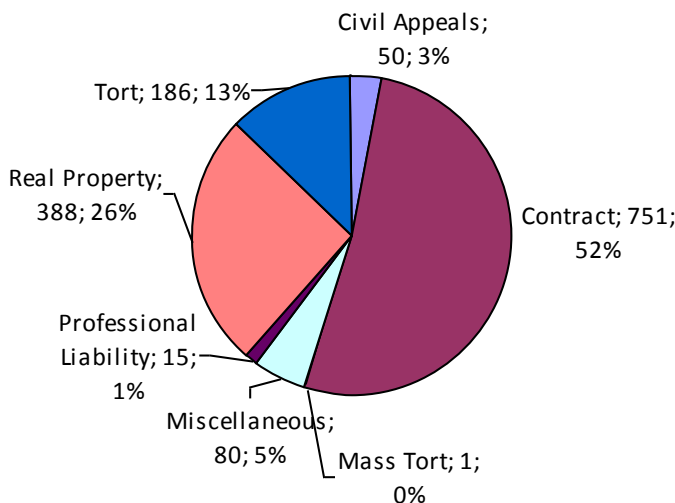
Board of Assessment*	6
Board of Elections*	2
Dept. of Transportation*	18
Zoning Board*	9
Statutory Appeal - Other*	15
Other*	0

### MISCELLANEOUS

Common Law/ Statutory Arbitration*	1
Declaratory Judgment*	5
Mandamus*	1
Non-Domestic Relations Restraining Order*	0
Quo Warranto*	0
Replevin*	14
Other*	59

**TOTAL DOCKETED CASES:**  
**1,471**

\* Civil Other



### Of the Docketed Cases:

Pro Se Filings:	9	0.6%
Class Action Suits:	2	0.1%
MDJ Appeals:	106	7.2%

# Fayette County

2011 Population Estimate: 136,097  
 Class of County: 4th  
 No. of Common Pleas Court Judgeships: 5



## 2011 Protection From Abuse

**No. of  
Petitions**

Cases Pending 1/1/2011	7
New Cases Filed in 2011	494

*Of these, Petitions Requesting Temporary Orders: 488 (98.8%)  
 Temporary Orders DENIED: 166 (34.0%), Temporary Orders GRANTED: 322 (66.0%)*

**Cases Available for Processing 501**

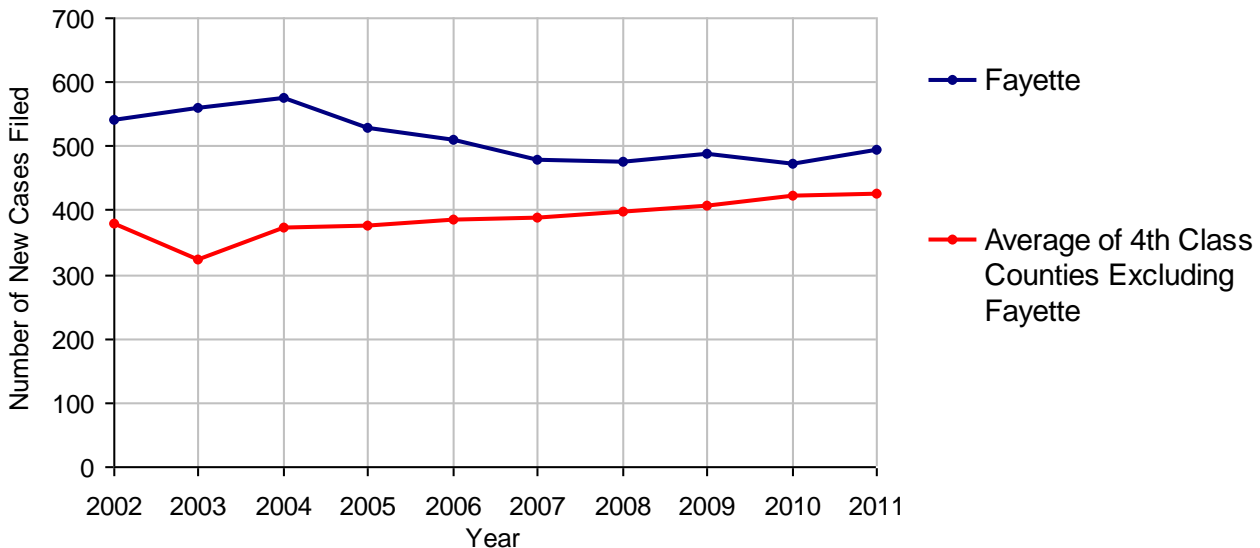
Processed By:

Temporary Order DENIED After Ex Parte Hearing and No Evidentiary Hearing Scheduled	25	5.0%
Temporary Order DISMISSED After Evidentiary Hearing and No Final Order Entered	1	0.2%
Final Order DENIED After Evidentiary Hearing Before a Judge	41	8.2%
Final Order GRANTED After Evidentiary Hearing Before a Judge	78	15.6%
Plaintiff Did Not Appear For Evidentiary Hearing	168	33.6%
Final Order by STIPULATION OR AGREEMENT Between the Parties	122	24.4%
Petition WITHDRAWN by Plaintiff	64	12.8%
TRANSFERRED to Another Jurisdiction	0	
DECEASED Party	0	
Other	1	0.2%

**Cases Processed 500 100.0%**

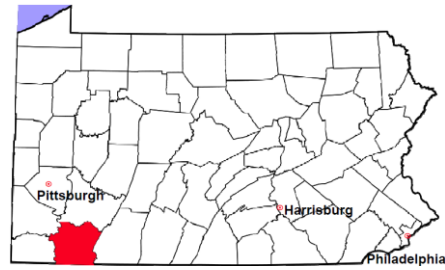
**Cases Pending 12/31/2011 1**

**PFA New Cases Filed, 2002-2011**

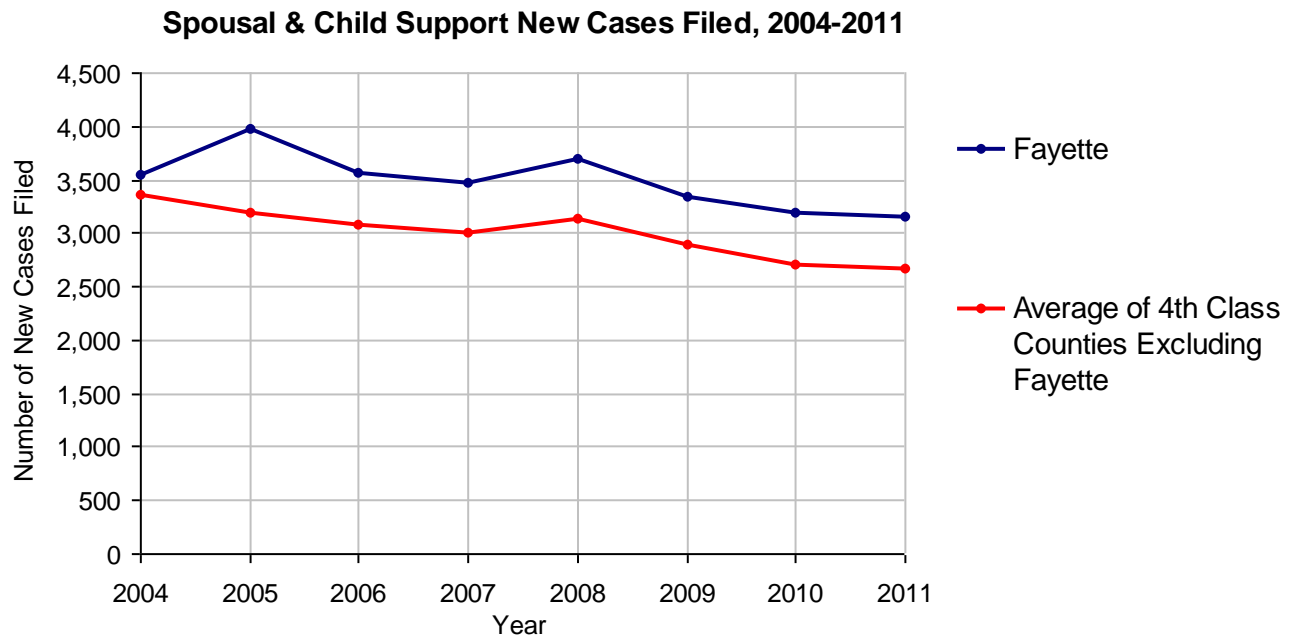


# Fayette County

2011 Population Estimate: 136,097  
 Class of County: 4th  
 No. of Common Pleas Court Judgeships: 5



<b>2011 Spousal &amp; Child Support</b>	<b>No. of Petitions</b>	
Cases Pending 1/1/2011	363	
New Cases Filed in 2011	3,150	
Dockets Transferred In (+)	19	
Dockets Transferred Out (-)	34	
<b>Cases Available for Processing</b>	<b>3,498</b>	
Processed By:		
Judge	100	3.2%
Intake Officer	3,041	96.8%
Hearing Officer	0	
Other	0	
<b>Cases Processed</b>	<b>3,141</b>	<b>100.0%</b>
<b>Cases Pending 12/31/2011</b>	<b>357</b>	

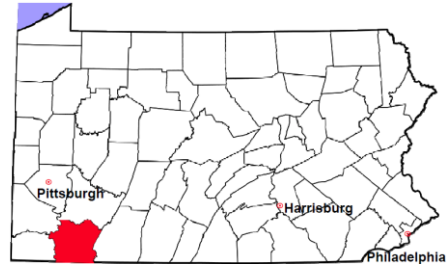


# Fayette County

2011 Population Estimate: 136,097

Class of County: 4th

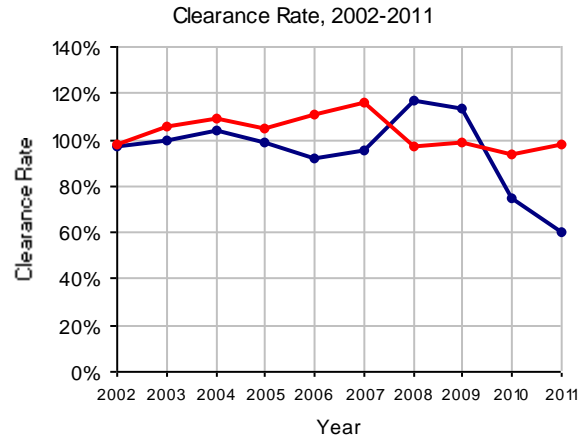
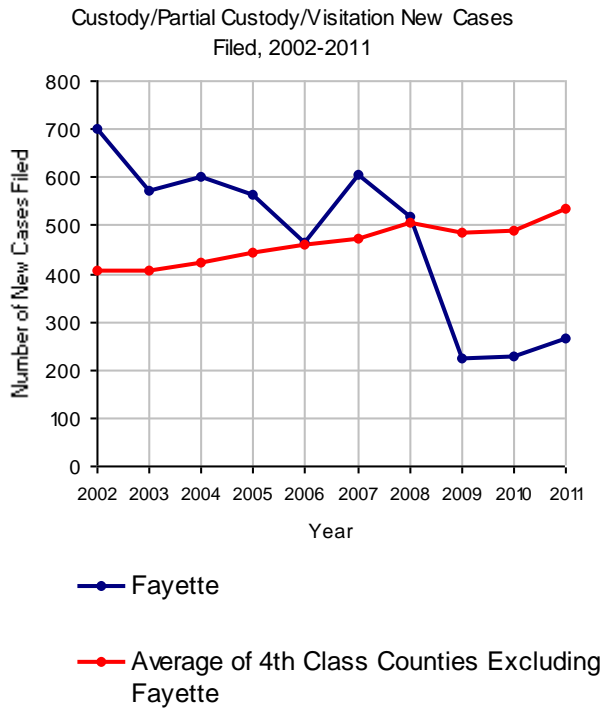
No. of Common Pleas Court Judgeships: 5



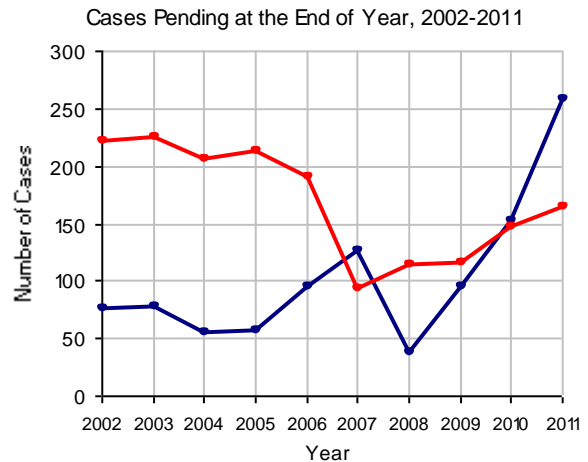
## 2011 Custody/Partial Custody/Visitation

No. of  
Petitions

Cases Pending 1/1/2011	153
New Cases Filed in 2011	266
<b>Cases Available for Processing</b>	<b>419</b>
Processed By:	
Judge	13 8.1%
Non-Judicial Officer	146 91.3%
Other	1 0.6%
<b>Cases Processed</b>	<b>160 100.0%</b>
<b>Cases Pending 12/31/2011</b>	<b>259</b>

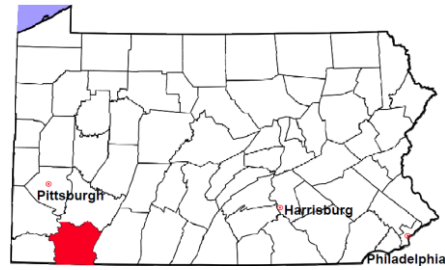


Note: Clearance Rate = Cases Processed / New Cases Filed



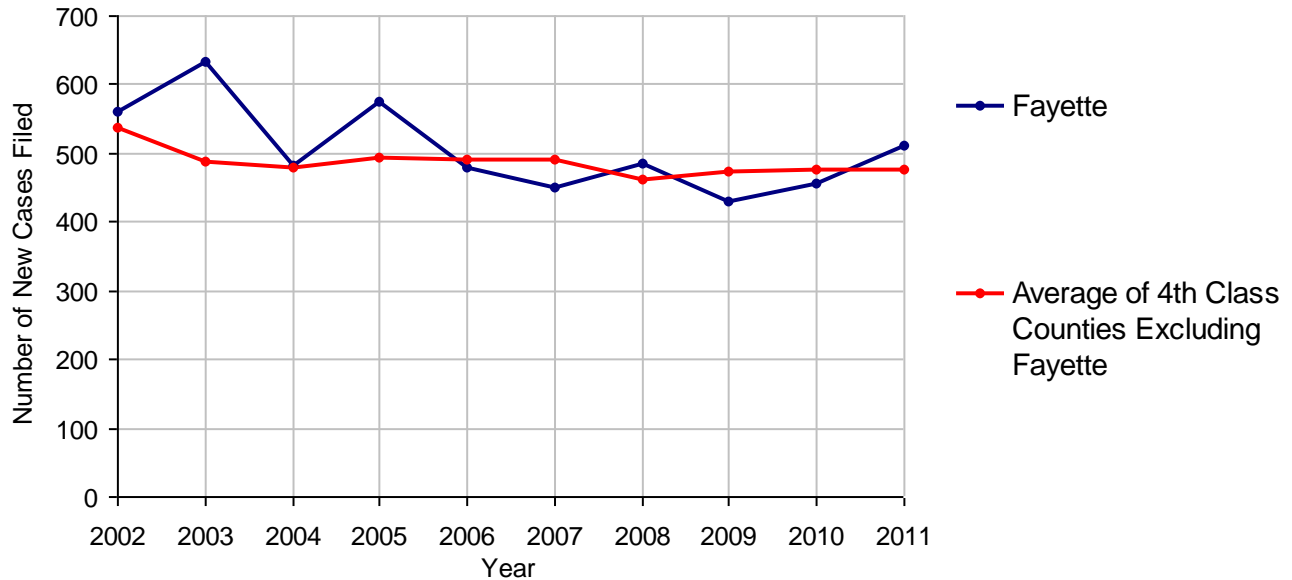
# Fayette County

2011 Population Estimate: 136,097  
 Class of County: 4th  
 No. of Common Pleas Court Judgeships: 5



<b>2011 Divorce</b>	<b>No. of Petitions</b>	
Cases Pending 1/1/2011	673	
New Cases Filed in 2011	511	
<b>Cases Available for Processing</b>	<b>1,184</b>	
Processed By:		
Contested Before a Judge	0	
Contested Before a Master	4	0.8%
Uncontested	421	89.0%
Other	48	10.1%
<b>Cases Processed</b>	<b>473</b>	<b>100.0%</b>
<b>Cases Pending 12/31/2011</b>	<b>711</b>	

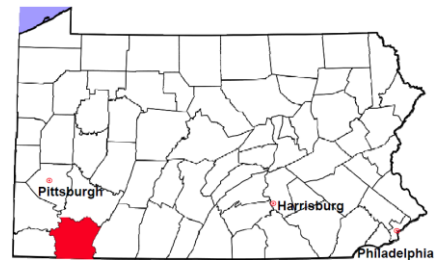
**Divorce New Cases Filed, 2002-2011**





# Fayette County

2011 Population Estimate: 136,097  
 Class of County: 4th  
 No. of Common Pleas Court Judgeships: 5



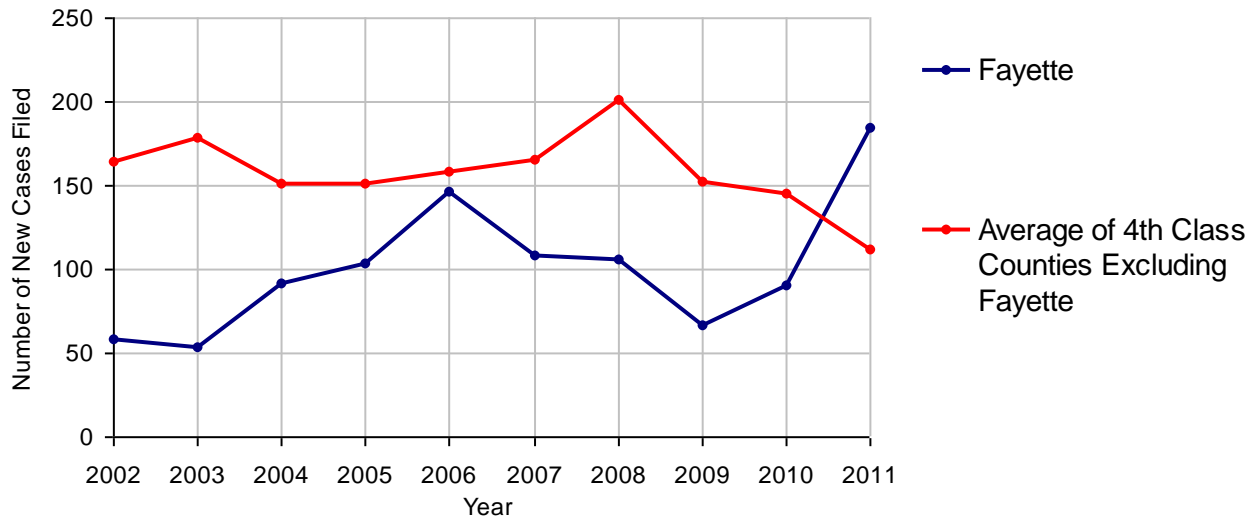
## 2011 Juvenile Dependency - Active Dependent Inventory



	Abuse/ Neglect	Status Offenses	Total
Cases Pending 1/1/2011	12	1	13
New Petitions Filed in 2011	180	5	185
Other	1	0	1
<b>Total Petitions Available for Processing</b>	<b>193</b>	<b>6</b>	<b>199</b>
Processed by:			
Adjudicated Dependent			
Judge	144	4	148
Master	0	0	0
Adjudicated NOT Dependent			
Judge	14	1	15
Master	0	0	0
Withdrawn/Dismissed/Inactive	2	0	2
Other	15	0	15
<b>Total Petitions Processed</b>	<b>175</b>	<b>5</b>	<b>180</b>
<b>Cases Pending 12/31/2011</b>	<b>18</b>	<b>1</b>	<b>19</b>

Data provided by CPCMS

Abuse/Neglect and Status Offenses New Cases Filed, 2002-2011



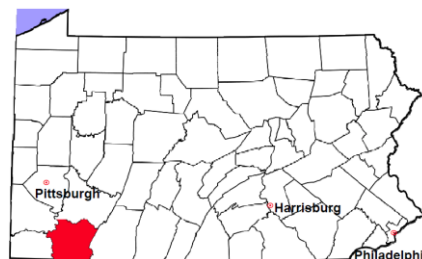
Note: Dependency data for 2002-2010 were collected manually. Dependency data for 2011 were provided by CPCMS.

# Fayette County

2011 Population Estimate: 136,097

Class of County: 4th

No. of Common Pleas Court Judgeships: 5



## 2011 Juvenile Dependency - Adjudicated Dependent Inventory



	Abuse/ Neglect	Status Offenses	Total	
Cases Pending 1/1/2011	146	10	156	
New Adjudicated Dependent Cases	144	4	148	
Other	20	0	20	
<b>Total Adjudicated Dependent Cases</b>	<b>310</b>	<b>14</b>	<b>324</b>	
<b><u>Court Supervision Terminated:</u></b>				
Family Reunification	10	0	10	11.9%
Adoption	16	0	16	19.0%
Placement with a Relative/Guardian	44	0	44	52.4%
Aged Out	6	1	7	8.3%
Other Permanency Outcomes*	1	0	1	1.2%
Other**	6	0	6	7.1%
<b>Total Adjudicated Dependent Cases Terminated</b>	<b>83</b>	<b>1</b>	<b>84</b>	<b>100.0%</b>
<b>Cases Pending 12/31/2011</b>	<b>227</b>	<b>13</b>	<b>240</b>	

Data provided by CPCMS

\* Other Permanency Outcomes include: adjudicated delinquent, death due to natural causes, emancipation, permanent living arrangement, and parent has come forward.

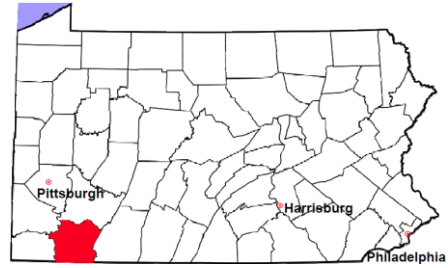
\*\* Other includes cases where Court Supervision is terminated due to transfer out of jurisdiction, withdrawal and administrative closures.

# Fayette County

2011 Population Estimate: 136,097

Class of County: 4th

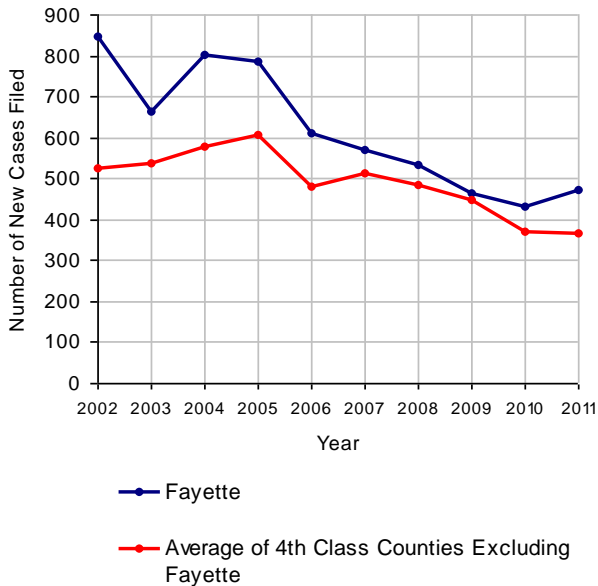
No. of Common Pleas Court Judgeships: 5



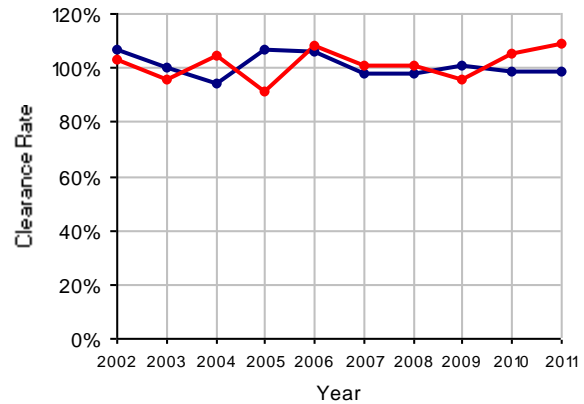
## 2011 Juvenile Delinquency

	No. of Cases
Cases Pending 1/1/2011	81
New Cases Filed in 2011	471
<b>Cases Available for Processing</b>	<b>552</b>
Processed By:	
Judge	120 25.9%
<b>Non-Judicial Officer</b>	<b>344 74.1%</b>
Other	0
<b>Cases Processed</b>	<b>464 100.0%</b>
<b>Cases Pending 12/31/2011</b>	<b>88</b>

Juvenile Delinquency New Cases Filed, 2002-2011

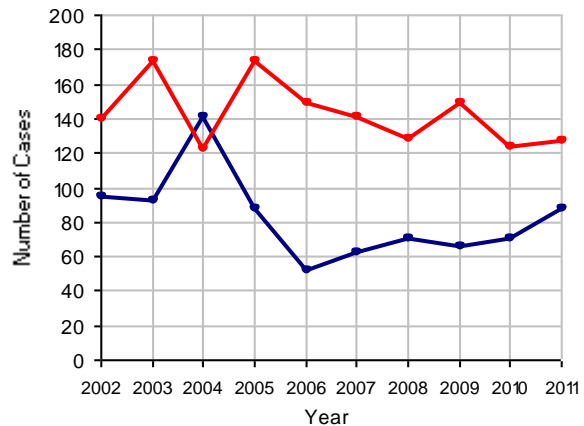


Clearance Rate, 2002-2011



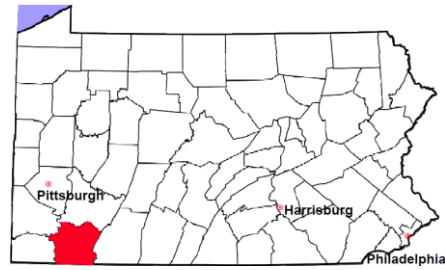
Note: Clearance Rate = Cases Processed / New Cases Filed

Cases Pending at the End of Year, 2002-2011



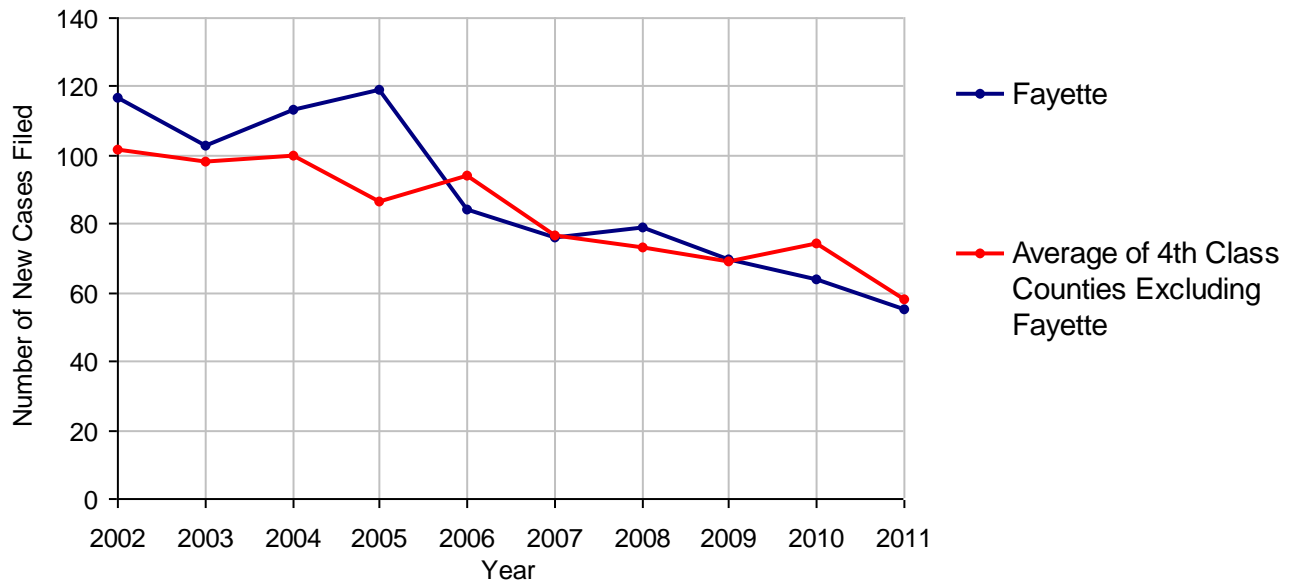
# Fayette County

2011 Population Estimate: 136,097  
 Class of County: 4th  
 No. of Common Pleas Court Judgeships: 5



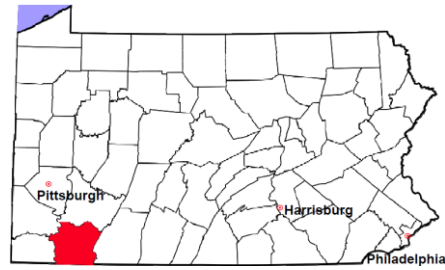
<b>2011 Accounts</b>	<b>No. of Cases</b>
Cases Pending 1/1/2011	12
New Cases Filed in 2011	55
<b>Cases Available for Processing</b>	<b>67</b>
Processed By:	
Contested before a Judge	0
Contested before a Non-judicial Officer	0
Uncontested	46    100.0%
Other	0
<b>Cases Processed</b>	<b>46    100.0%</b>
<b>Cases Pending 12/31/2011</b>	<b>21</b>

**Accounts New Cases Filed, 2002-2011**



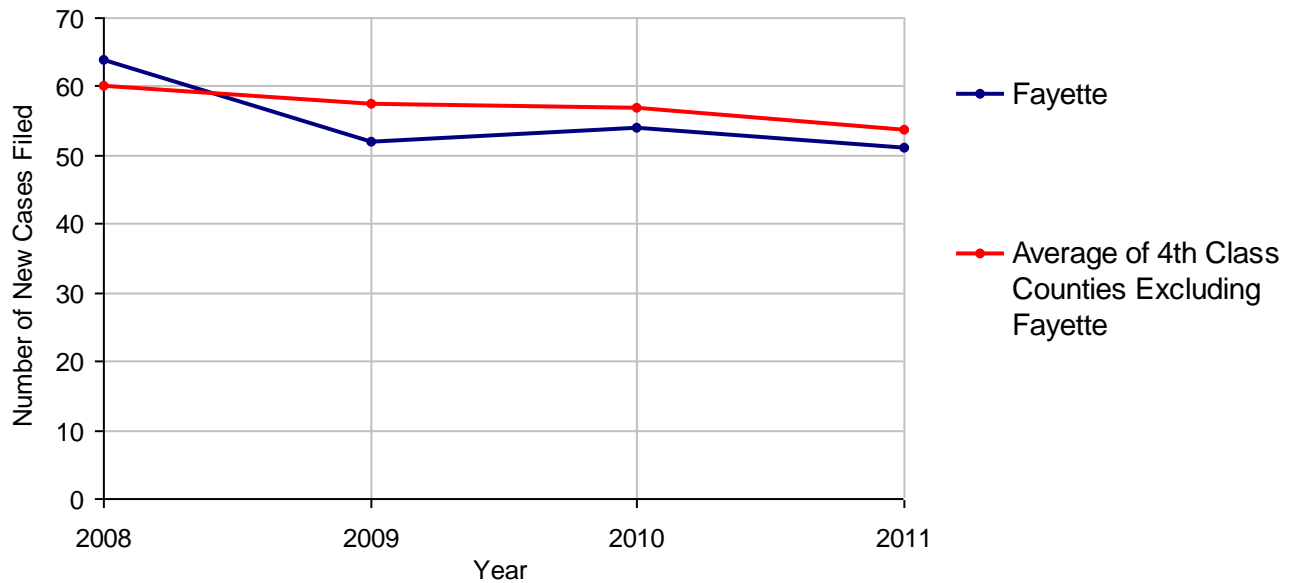
# Fayette County

2011 Population Estimate: 136,097  
 Class of County: 4th  
 No. of Common Pleas Court Judgeships: 5



<b>2011 Adoptions</b>		<b>No. of Cases</b>	
Cases Pending 1/1/2011		11	
New Cases Filed in 2011		51	
<b>Cases Available for Processing</b>		<b>62</b>	
Processed By:			
Contested before a Judge	Granted	0	
	Denied	0	
Uncontested	Granted	50	100.0%
	Denied	0	
Other		0	
<b>Cases Processed</b>		<b>50</b>	<b>100.0%</b>
<b>Cases Pending 12/31/2011</b>		<b>12</b>	

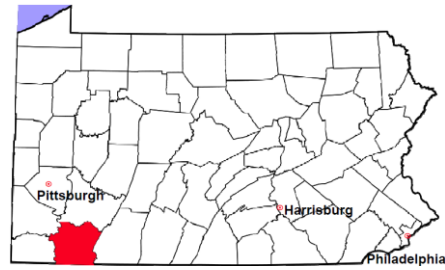
**Adoptions New Cases Filed, 2008-2011**



Note: Prior to 2008, each petition was counted as one new case, regardless of the number of children listed on the petition. Starting in 2008, each child listed on a petition is counted as a separate case. Therefore, statistics for the years since 2008 should not be compared to those for the years prior to 2008.

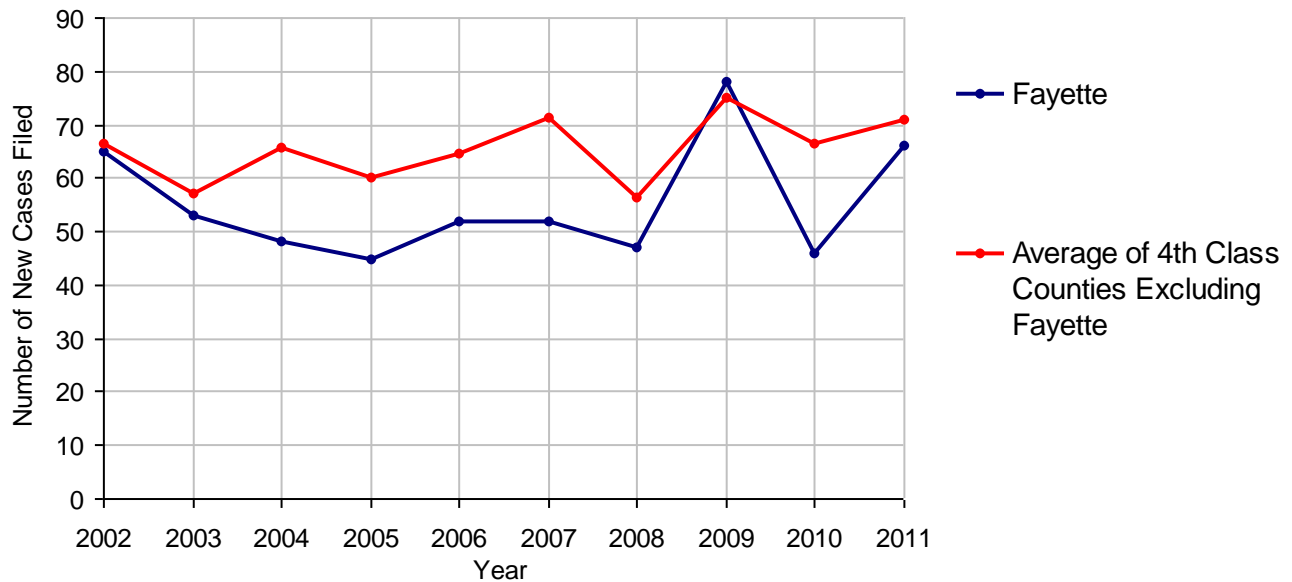
# Fayette County

2011 Population Estimate: 136,097  
 Class of County: 4th  
 No. of Common Pleas Court Judgeships: 5



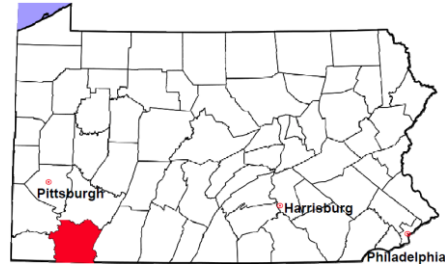
2011 Relinquishments/Terminations		No. of Cases
Cases Pending 1/1/2011		6
New Cases Filed in 2011		66
<b>Cases Available for Processing</b>		<b>72</b>
Processed By:		
Contested before a Judge	18	37.5%
Uncontested	30	62.5%
Other	0	
<b>Cases Processed</b>	<b>48</b>	<b>100.0%</b>
<b>Cases Pending 12/31/2011</b>		<b>24</b>

Relinquishments/Terminations New Cases Filed, 2002-2011



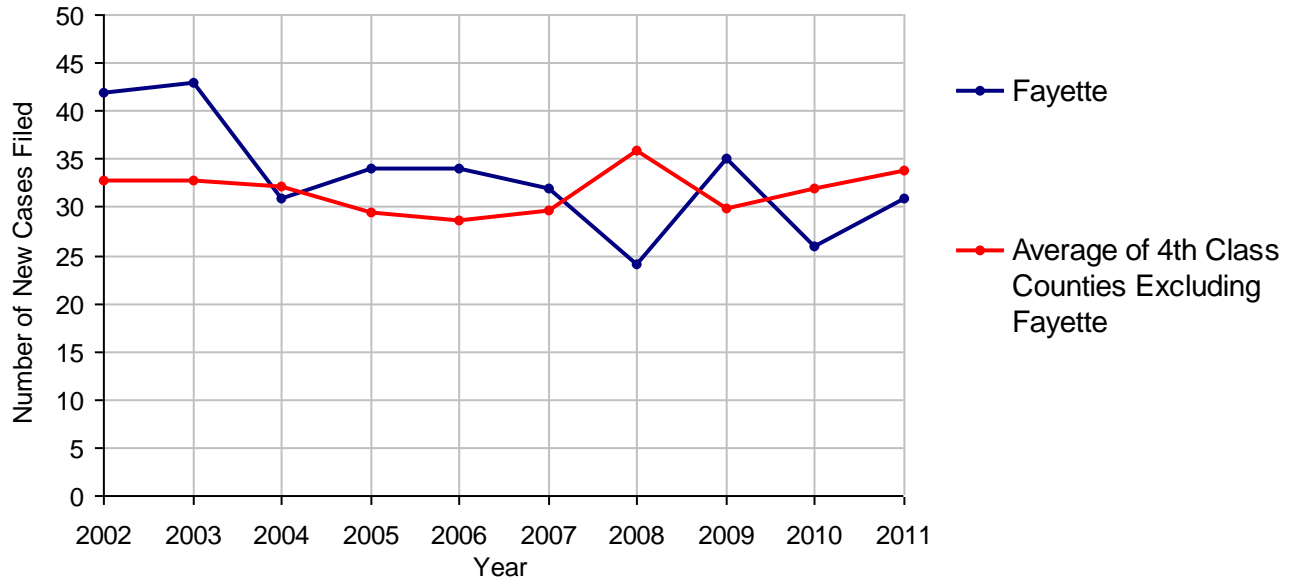
# Fayette County

2011 Population Estimate: 136,097  
 Class of County: 4th  
 No. of Common Pleas Court Judgeships: 5



<b>2011 Appointment of Guardians</b>	<b>No. of Cases</b>
Cases Pending 1/1/2011	10
New Cases Filed in 2011	31
<b>Cases Available for Processing</b>	<b>41</b>
Processed By:	
Contested before a Judge	0
Uncontested	26 100.0%
Other	0
<b>Cases Processed</b>	<b>26 100.0%</b>
<b>Cases Pending 12/31/2011</b>	<b>15</b>

**Appointment of Guardians New Cases Filed, 2002-2011**

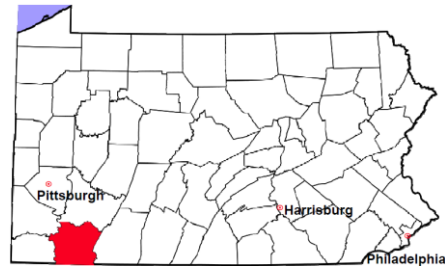


# Fayette County

2011 Population Estimate: 136,097

Class of County: 4th

No. of Common Pleas Court Judgeships: 5



---

## 2011 Jury Activity and Performance Measures

---

A. Juror Days	5,330
B. Number Sent to Voir Dire	3,766
Voir Dire Attendance Rate (B/A * 100)	70.7%
C. Number of Jurors Selected	1,474
Juror Selection Rate (C/B * 100)	39.1%

---

Note: In mid-2011, AOPC began utilizing the National Center for State Courts' Jury Managers' Toolbox for collecting jury data. This has resulted in limited jury performance measures being reported for 2011. Additional data will be available in 2012.