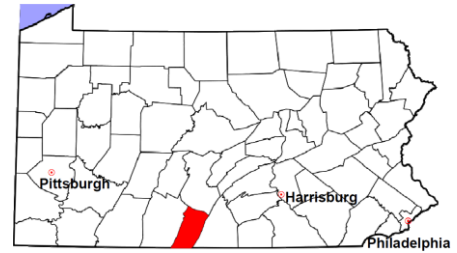


# Fulton County

2011 Population Estimate: 14,801  
 Class of County: 8th  
 No. of Common Pleas Court Judgeships: 5  
 (Fulton and Franklin combined)



## 2011 Criminal No. of Cases

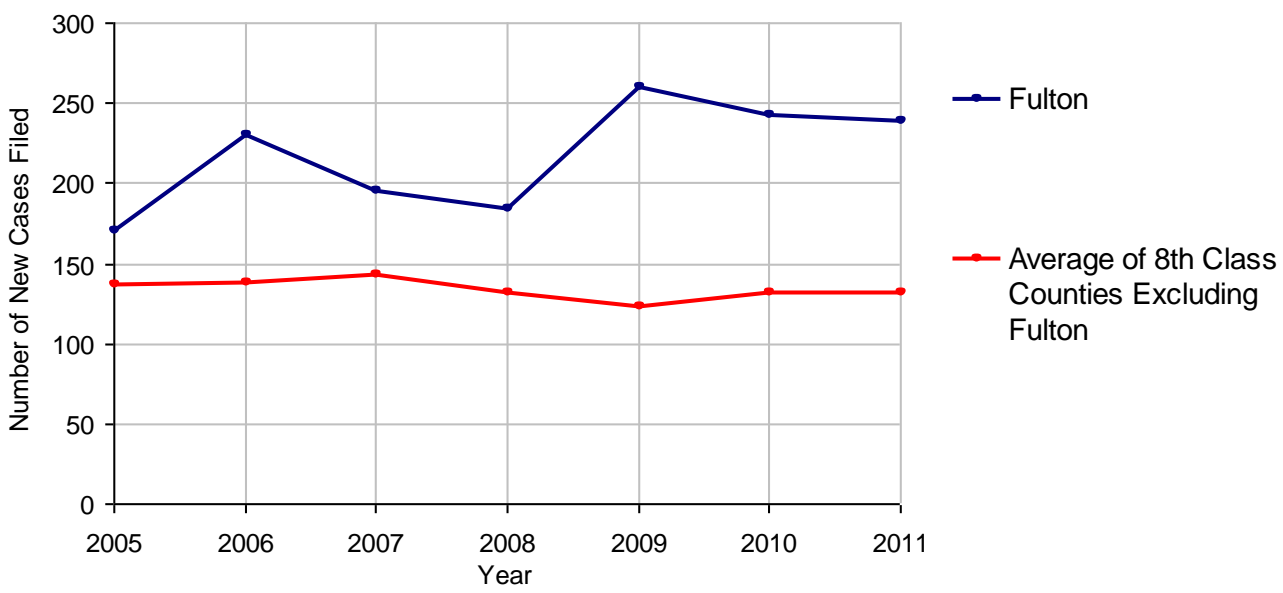
Cases Pending 1/1/2011	140	
New Cases Filed in 2011	245	
Reopened Cases	31	
<b>Cases Available for Disposition</b>	<b>416</b>	
<b>Disposed by:</b>		
Withdrawn/Dismissed	19	6.6%
ARD	31	10.8%
Guilty Plea	160	55.6%
Non-Jury Trial	1	0.3%
Jury Trial	13	4.5%
Inactive	6	2.1%
Other	58	20.1%
<b>Total Cases Disposed</b>	<b>288</b>	<b>100.0%</b>
<b>Cases Pending 12/31/2011</b>	<b>128</b>	
Cases Awaiting Sentencing	21	



Age of Pending Cases as of 12/31/2011		
0-60 Days	18	14.1%
61-120 Days	23	18.0%
121-180 Days	15	11.7%
181-240 Days	6	4.7%
241-300 Days	6	4.7%
301-360 Days	4	3.1%
Over 360 Days	56	43.8%
<b>Total</b>	<b>128</b>	<b>100.0%</b>

Data provided by CPCMS

**Criminal New Cases Filed, 2005-2011**

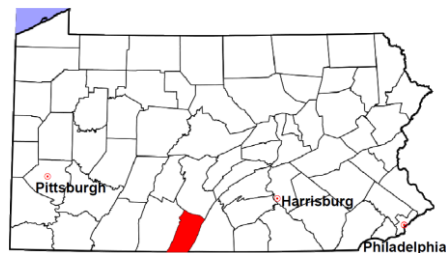


# Fulton County

2011 Population Estimate: 14,801

Class of County: 8th

No. of Common Pleas Court Judgeships: 5  
(Fulton and Franklin combined)



## 2011 Criminal - New Cases by Case Type

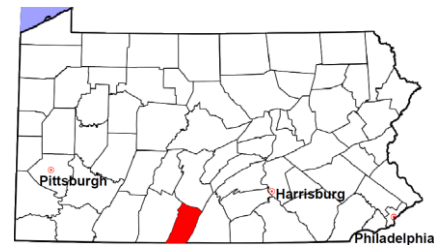


Case Type	Felony	Misdemeanor	Summary /Ungraded	Total
Person	13	25	2	40
Property	24	30	1	55
Drug	9	41	0	50
Weapon	4	2	0	6
Public Order	7	17	3	27
Motor Vehicle - DWI/DUI	0	66	0	66
Motor Vehicle - Other	0	0	1	1
Other	0	0	0	0
<b>Total</b>	<b>57</b>	<b>181</b>	<b>7</b>	<b>245</b>
	<b>23.3%</b>	<b>73.9%</b>	<b>2.9%</b>	<b>100.0%</b>

Data provided by CPCMS

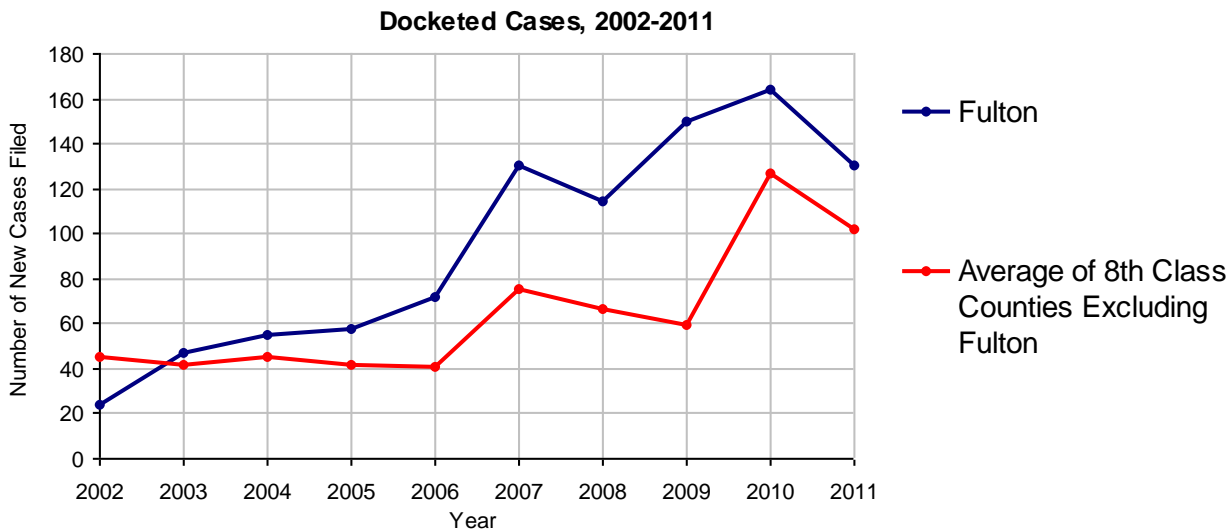
# Fulton County

2011 Population Estimate: 14,801  
 Class of County: 8th  
 No. of Common Pleas Court Judgeships: 5  
 (Fulton and Franklin combined)



2011 Civil	Civil Action	Other	Total
Cases Pending 1/1/2011	47	29	76
Docketed Cases	82	48	130
Arbitration Appeals	0	0	0
Transferred In	0	0	0
Returned to Active	0	0	0
<b>Cases Available for Processing</b>	<b>129</b>	<b>77</b>	<b>206</b>
Disposed By:			
Default Judgments	4	1	5
Cases Decided by Arbitration Board	0	0	0
Dispositive Motions	0	0	0
Settlements	1	0	1
Moved to Inactive Status	0	0	0
Transferred/Withdrawn	0	0	0
Pa.R.J.A. 1901 Administrative Purge	0	0	0
Other	69	32	101
Jury Trial	0	0	0
Non-Jury Trial	1	0	1
<b>Total Cases Disposed</b>	<b>75</b>	<b>33</b>	<b>108</b>
<b>Cases Pending 12/31/2011</b>	<b>54</b>	<b>44</b>	<b>98</b>

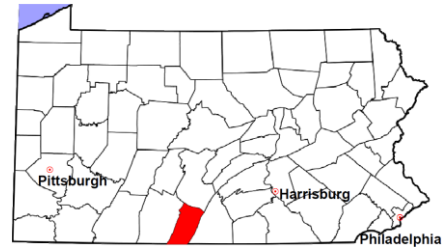
Age of Pending Cases as of 12/31/2011 (Civil Action Only)		
0-6 months	25	46.3%
7-12 months	19	35.2%
13-18 months	10	18.5%
19-24 months	0	
25-30 months	0	
31-36 months	0	
37-42 months	0	
43-48 months	0	
49-54 months	0	
55-60 months	0	
61-66 months	0	
67-72 months	0	
Over 72 months	0	
<b>Total</b>	<b>54</b>	<b>100.0%</b>



Note: Prior to June 2010, docketed cases under the "Other" category were not reported. The reporting of these cases starting from June 2010 may contribute to an increase in docketed cases from 2009 to 2010.

# Fulton County

2011 Population Estimate: 14,801  
 Class of County: 8th  
 No. of Common Pleas Court Judgeships: 5  
 (Fulton and Franklin combined)



## 2011 Civil - Docketed Cases Listed by Case Type

### TORT (does not include mass tort)

Intentional	0
Malicious Prosecution	0
Motor Vehicle	10
Nuisance	0
Premise Liability	0
Product Liability	0
Slander/Libel/Defamation	0
Other	2

### MASS TORT

Asbestos	0
Tobacco	0
Toxic Tort - DES	0
Toxic Tort - Implant	0
Toxic Waste	0
Other	0

### PROFESSIONAL LIABILITY

Dental	0
Legal	0
Medical Malpractice	0
Other	0

### CONTRACT

(does not include judgments)

Buyer Plaintiff	0
Debt Collection:	
Credit Card	54
Other	11
Employment Dispute:	
Discrimination	0
Other	1
Other	3

### REAL PROPERTY

Ejectment*	3
Eminent Domain/ Condemnation*	1
Ground Rent	1
Landlord/Tenant Dispute	0
Mortgage Forclosures:	
Residential*	29
Commercial*	3
Partition of Real Property*	1
Quiet Title*	2
Other*	1

### CIVIL APPEALS

*Administrative Agencies*

Board of Assessment*	2
Board of Elections*	0
Dept. of Transportation*	4
Zoning Board*	0
Statutory Appeal - Other*	0
Other*	0

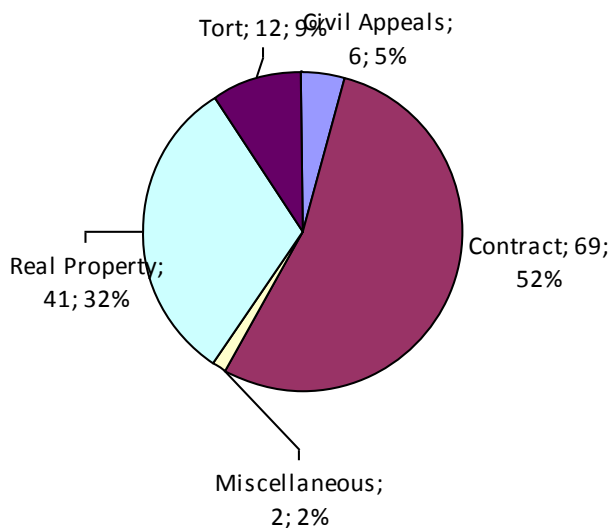
### MISCELLANEOUS

Common Law/ Statutory Arbitration*	0
Declaratory Judgment*	0
Mandamus*	0
Non-Domestic Relations Restraining Order*	0
Quo Warranto*	0
Replevin*	1
Other*	1

### TOTAL DOCKETED CASES:

**130**

\* Civil Other



### Of the Docketed Cases:

Pro Se Filings:	0	
Class Action Suits:	1	0.8%
MDJ Appeals:	2	1.5%

# Fulton County

2011 Population Estimate: 14,801  
 Class of County: 8th  
 No. of Common Pleas Court Judgeships: 5  
 (Fulton and Franklin combined)

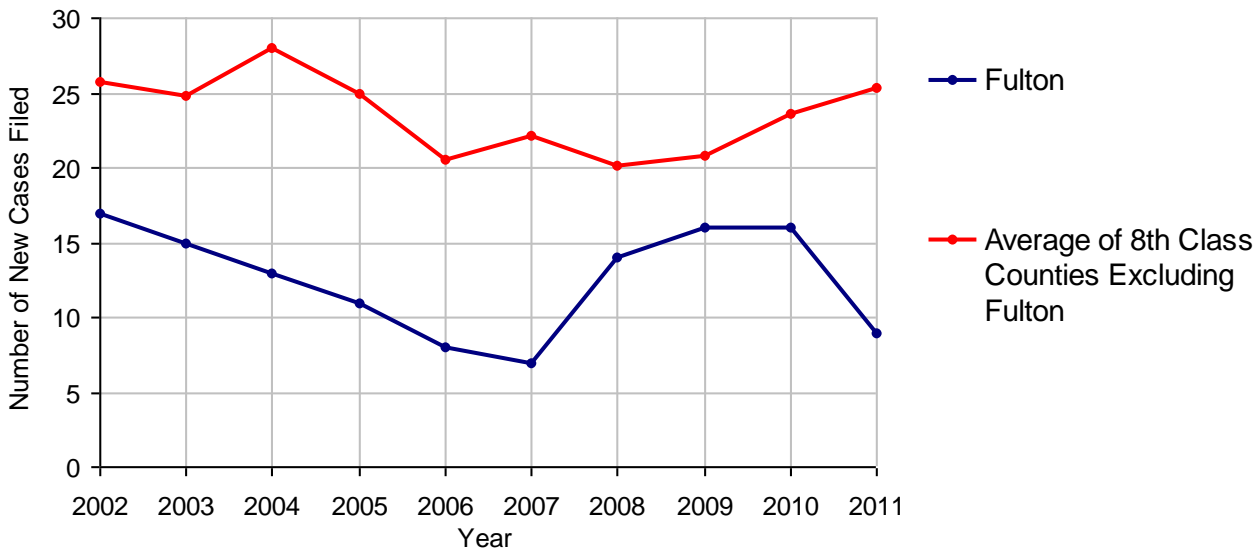


## 2011 Protection From Abuse

**No. of  
Petitions**

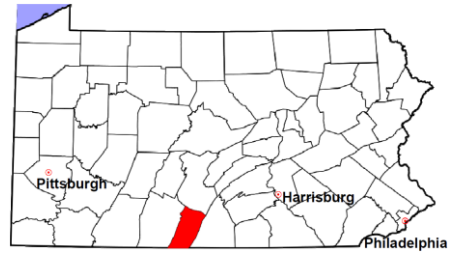
Cases Pending 1/1/2011	0
New Cases Filed in 2011	9
<i>Of these, Petitions Requesting Temporary Orders: 9 (100.0%)</i>	
<i>Temporary Orders DENIED: 0 (0.0%), Temporary Orders GRANTED: 9 (100.0%)</i>	
<b>Cases Available for Processing</b>	<b>9</b>
Processed By:	
Temporary Order DENIED After Ex Parte Hearing and No Evidentiary Hearing Scheduled	0
Temporary Order DISMISSED After Evidentiary Hearing and No Final Order Entered	0
Final Order DENIED After Evidentiary Hearing Before a Judge	0
Final Order GRANTED After Evidentiary Hearing Before a Judge	7 77.8%
Plaintiff Did Not Appear For Evidentiary Hearing	0
Final Order by STIPULATION OR AGREEMENT Between the Parties	0
Petition WITHDRAWN by Plaintiff	2 22.2%
TRANSFERRED to Another Jurisdiction	0
DECEASED Party	0
Other	0
<b>Cases Processed</b>	<b>9 100.0%</b>
<b>Cases Pending 12/31/2011</b>	<b>0</b>

**PFA New Cases Filed, 2002-2011**

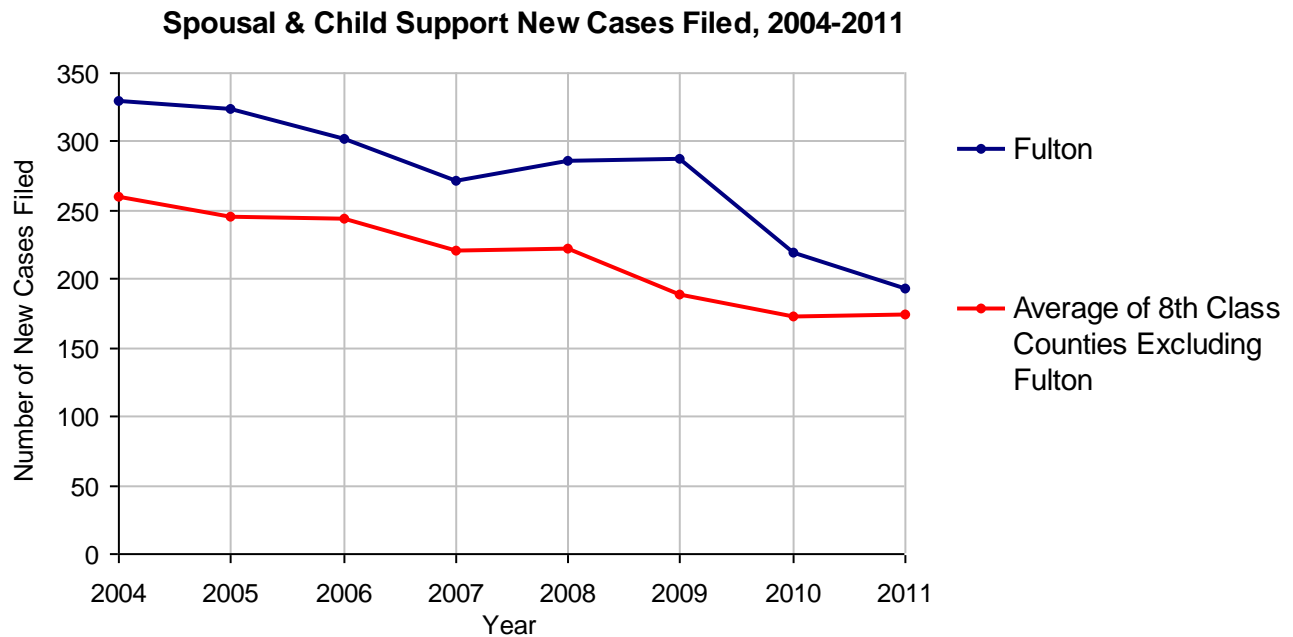


# Fulton County

2011 Population Estimate: 14,801  
 Class of County: 8th  
 No. of Common Pleas Court Judgeships: 5  
 (Fulton and Franklin combined)



<b>2011 Spousal &amp; Child Support</b>	<b>No. of Petitions</b>	
Cases Pending 1/1/2011	19	
New Cases Filed in 2011	193	
Dockets Transferred In (+)	4	
Dockets Transferred Out (-)	5	
<b>Cases Available for Processing</b>	<b>211</b>	
Processed By:		
Judge	0	
Intake Officer	188	100.0%
Hearing Officer	0	
Other	0	
<b>Cases Processed</b>	<b>188</b>	<b>100.0%</b>
<b>Cases Pending 12/31/2011</b>	<b>23</b>	

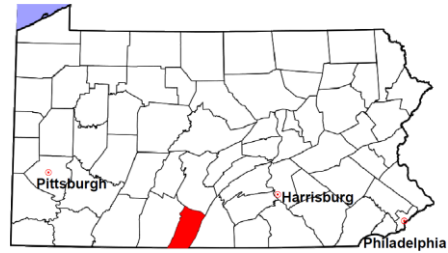


# Fulton County

2011 Population Estimate: 14,801

Class of County: 8th

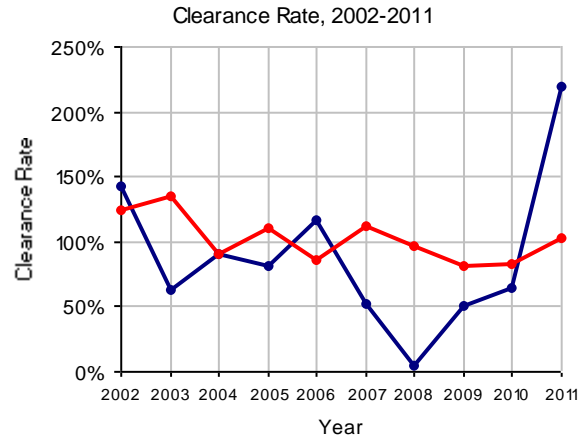
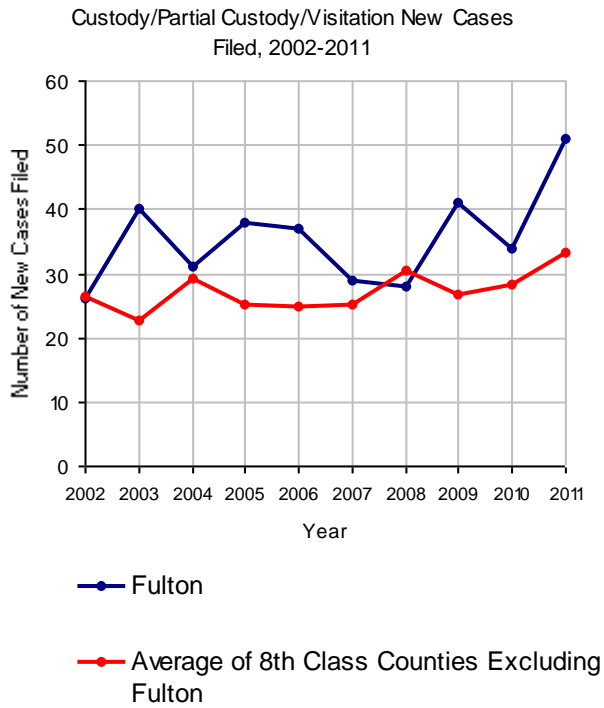
No. of Common Pleas Court Judgeships: 5  
(Fulton and Franklin combined)



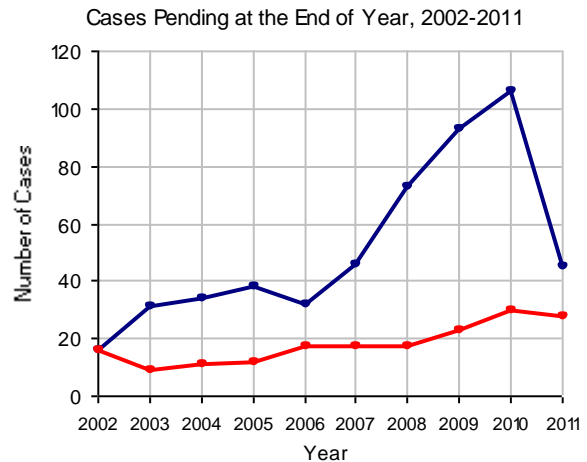
## 2011 Custody/Partial Custody/Visitation

No. of  
Petitions

Cases Pending 1/1/2011	106
New Cases Filed in 2011	51
<b>Cases Available for Processing</b>	<b>157</b>
Processed By:	
Judge	76 67.9%
Non-Judicial Officer	0
Other	36 32.1%
<b>Cases Processed</b>	<b>112 100.0%</b>
<b>Cases Pending 12/31/2011</b>	<b>45</b>

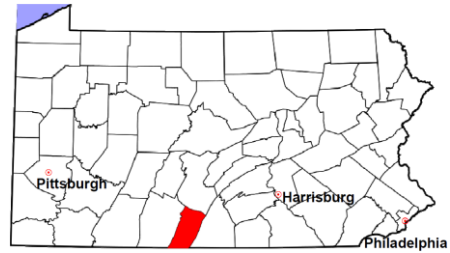


Note: Clearance Rate = Cases Processed / New Cases Filed



# Fulton County

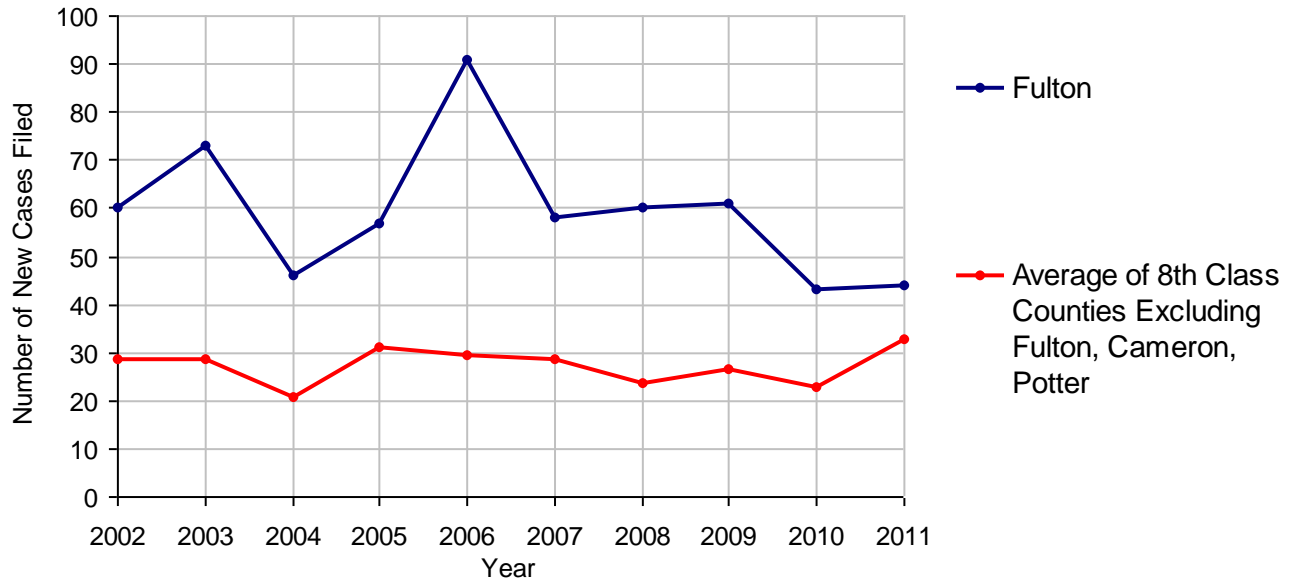
2011 Population Estimate: 14,801  
 Class of County: 8th  
 No. of Common Pleas Court Judgeships: 5  
 (Fulton and Franklin combined)



<b>2011 Divorce</b>	<b>No. of Petitions</b>	
Cases Pending 1/1/2011	91 <sup>(R)</sup>	
New Cases Filed in 2011	44	
<b>Cases Available for Processing</b>	<b>135</b>	
Processed By:		
Contested Before a Judge	31	38.8%
Contested Before a Master	0	
Uncontested	9	11.3%
Other	40	50.0%
<b>Cases Processed</b>	<b>80</b>	<b>100.0%</b>
<b>Cases Pending 12/31/2011</b>	<b>55</b>	

(R) - Revised

**Divorce New Cases Filed, 2002-2011**

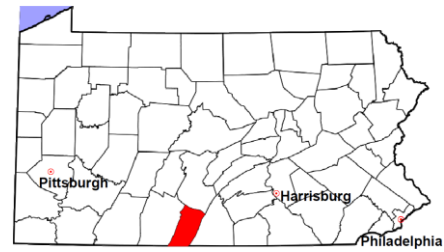


Note. Due to a high number of out-of-district petitions, Cameron and Potter Counties have a larger inventories than other 8th class counties. Therefore, it is not meaningful to compare Cameron and Potter Counties with other 8th class counties.



# Fulton County

2011 Population Estimate: 14,801  
 Class of County: 8th  
 No. of Common Pleas Court Judgeships: 5  
 (Fulton and Franklin combined)



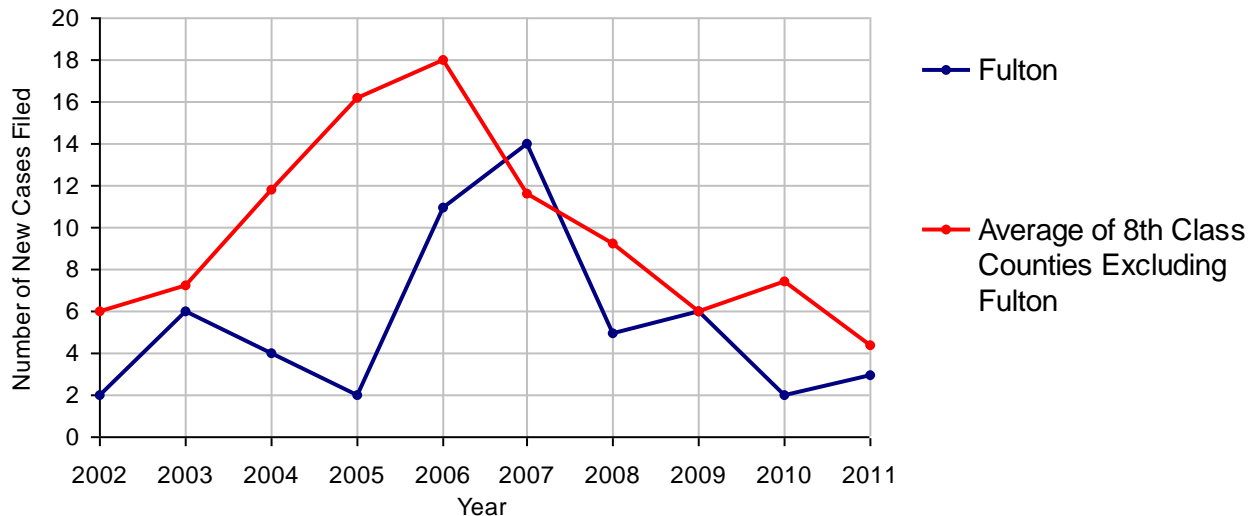
## 2011 Juvenile Dependency - Active Dependent Inventory



	Abuse/ Neglect	Status Offenses	Total
Cases Pending 1/1/2011	0	0	0
New Petitions Filed in 2011	1	2	3
Other	0	0	0
<b>Total Petitions Available for Processing</b>	<b>1</b>	<b>2</b>	<b>3</b>
Processed by:			
Adjudicated Dependent			
Judge	1	2	3
Master	0	0	0
Adjudicated NOT Dependent			
Judge	0	0	0
Master	0	0	0
Withdrawn/Dismissed/Inactive	0	0	0
Other	0	0	0
<b>Total Petitions Processed</b>	<b>1</b>	<b>2</b>	<b>3</b>
<b>Cases Pending 12/31/2011</b>	<b>0</b>	<b>0</b>	<b>0</b>

Data provided by CPCMS

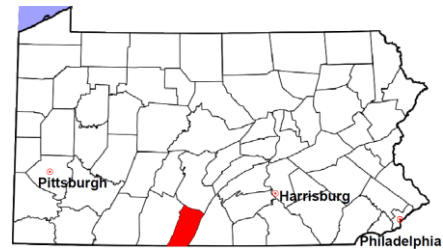
Abuse/Neglect and Status Offenses New Cases Filed, 2002-2011



Note: Dependency data for 2002-2010 were collected manually. Dependency data for 2011 were provided by CPCMS.

# Fulton County

2011 Population Estimate: 14,801  
 Class of County: 8th  
 No. of Common Pleas Court Judgeships: 5  
 (Fulton and Franklin combined)



## 2011 Juvenile Dependency - Adjudicated Dependent Inventory

	Abuse/ Neglect	Status Offenses	Total	
Cases Pending 1/1/2011	8	0	8	
New Adjudicated Dependent Cases	1	2	3	
Other	0	0	0	
<b>Total Adjudicated Dependent Cases</b>	<b>9</b>	<b>2</b>	<b>11</b>	
<b><u>Court Supervision Terminated:</u></b>				
Family Reunification	0	0	0	
Adoption	1	0	1	50.0%
Placement with a Relative/Guardian	0	1	1	50.0%
Aged Out	0	0	0	
Other Permanency Outcomes*	0	0	0	
Other**	0	0	0	
<b>Total Adjudicated Dependent Cases Terminated</b>	<b>1</b>	<b>1</b>	<b>2</b>	<b>100.0%</b>
<b>Cases Pending 12/31/2011</b>	<b>8</b>	<b>1</b>	<b>9</b>	

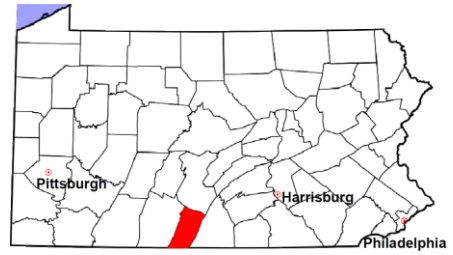
Data provided by CPCMS

\* Other Permanency Outcomes include: adjudicated delinquent, death due to natural causes, emancipation, permanent living arrangement, and parent has come forward.

\*\* Other includes cases where Court Supervision is terminated due to transfer out of jurisdiction, withdrawal and administrative closures.

# Fulton County

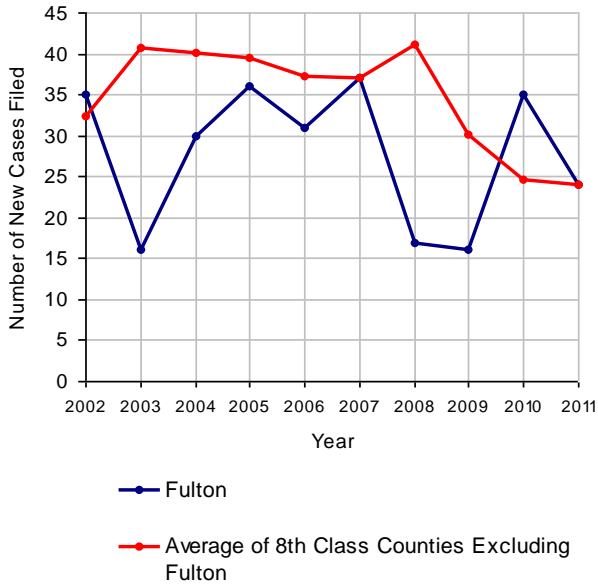
2011 Population Estimate: 14,801  
 Class of County: 8th  
 No. of Common Pleas Court Judgeships: 5  
 (Fulton and Franklin combined)



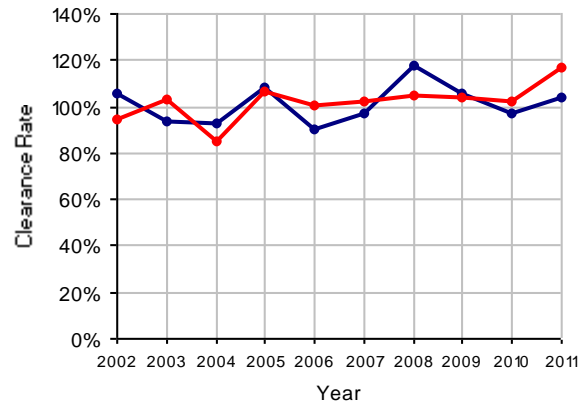
## 2011 Juvenile Delinquency

	No. of Cases
Cases Pending 1/1/2011	1
New Cases Filed in 2011	24
<b>Cases Available for Processing</b>	<b>25</b>
Processed By:	
Judge	8 32.0%
<b>Non-Judicial Officer</b>	<b>13 52.0%</b>
Other	4 16.0%
<b>Cases Processed</b>	<b>25 100.0%</b>
<b>Cases Pending 12/31/2011</b>	<b>0</b>

Juvenile Delinquency New Cases Filed, 2002-2011

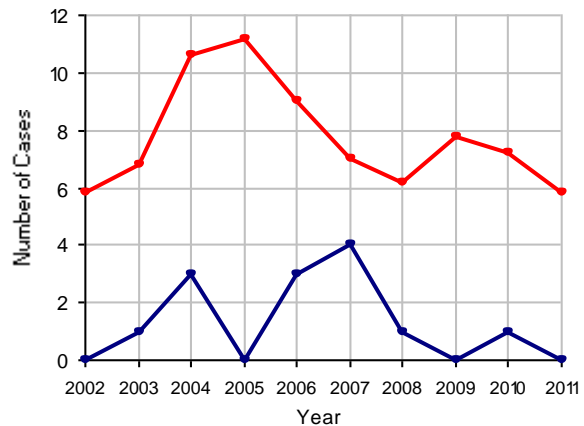


Clearance Rate, 2002-2011



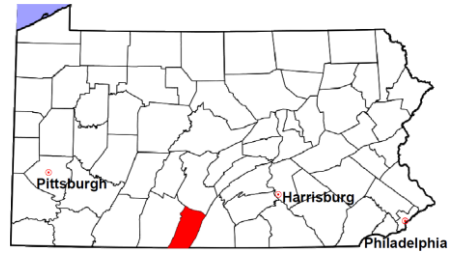
Note: Clearance Rate = Cases Processed / New Cases Filed

Cases Pending at the End of Year, 2002-2011



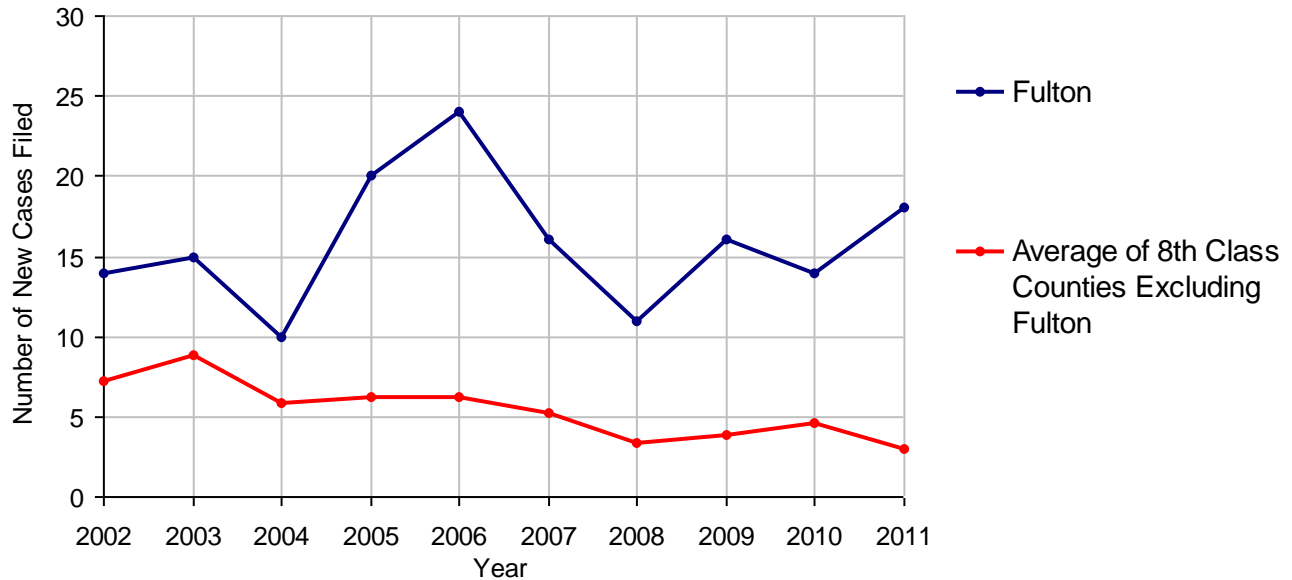
# Fulton County

2011 Population Estimate: 14,801  
 Class of County: 8th  
 No. of Common Pleas Court Judgeships: 5  
 (Fulton and Franklin combined)



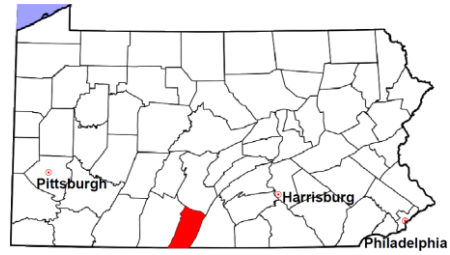
<b>2011 Accounts</b>	<b>No. of Cases</b>
Cases Pending 1/1/2011	3
New Cases Filed in 2011	18
<b>Cases Available for Processing</b>	<b>21</b>
Processed By:	
Contested before a Judge	1      5.6%
Contested before a Non-judicial Officer	0
Uncontested	17      94.4%
Other	0
<b>Cases Processed</b>	<b>18      100.0%</b>
<b>Cases Pending 12/31/2011</b>	<b>3</b>

**Accounts New Cases Filed, 2002-2011**



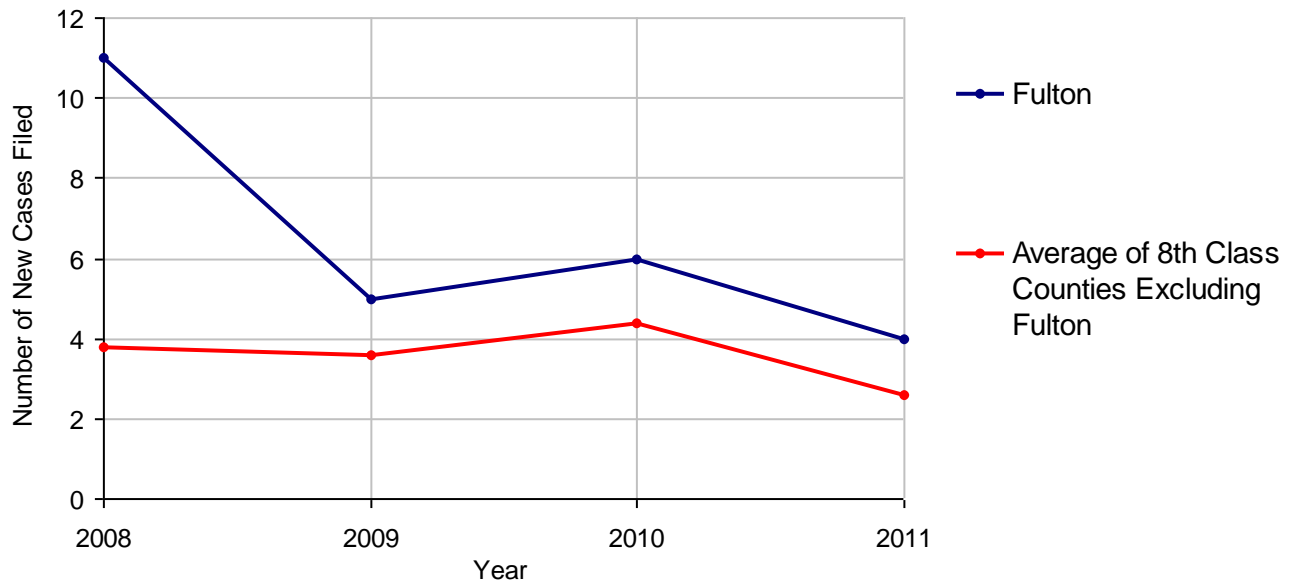
# Fulton County

2011 Population Estimate: 14,801  
 Class of County: 8th  
 No. of Common Pleas Court Judgeships: 5  
 (Fulton and Franklin combined)



<b>2011 Adoptions</b>		<b>No. of Cases</b>	
Cases Pending 1/1/2011		1	
New Cases Filed in 2011		4	
<b>Cases Available for Processing</b>		<b>5</b>	
Processed By:			
Contested before a Judge	Granted	0	
	Denied	0	
Uncontested	Granted	4	100.0%
	Denied	0	
Other		0	
<b>Cases Processed</b>		<b>4</b>	<b>100.0%</b>
<b>Cases Pending 12/31/2011</b>		<b>1</b>	

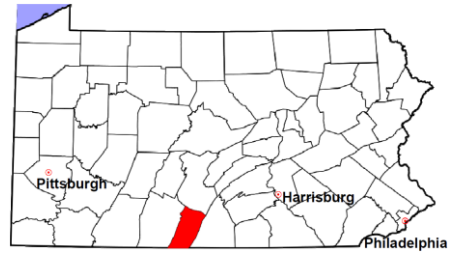
**Adoptions New Cases Filed, 2008-2011**



Note: Prior to 2008, each petition was counted as one new case, regardless of the number of children listed on the petition. Starting in 2008, each child listed on a petition is counted as a separate case. Therefore, statistics for the years since 2008 should not be compared to those for the years prior to 2008.

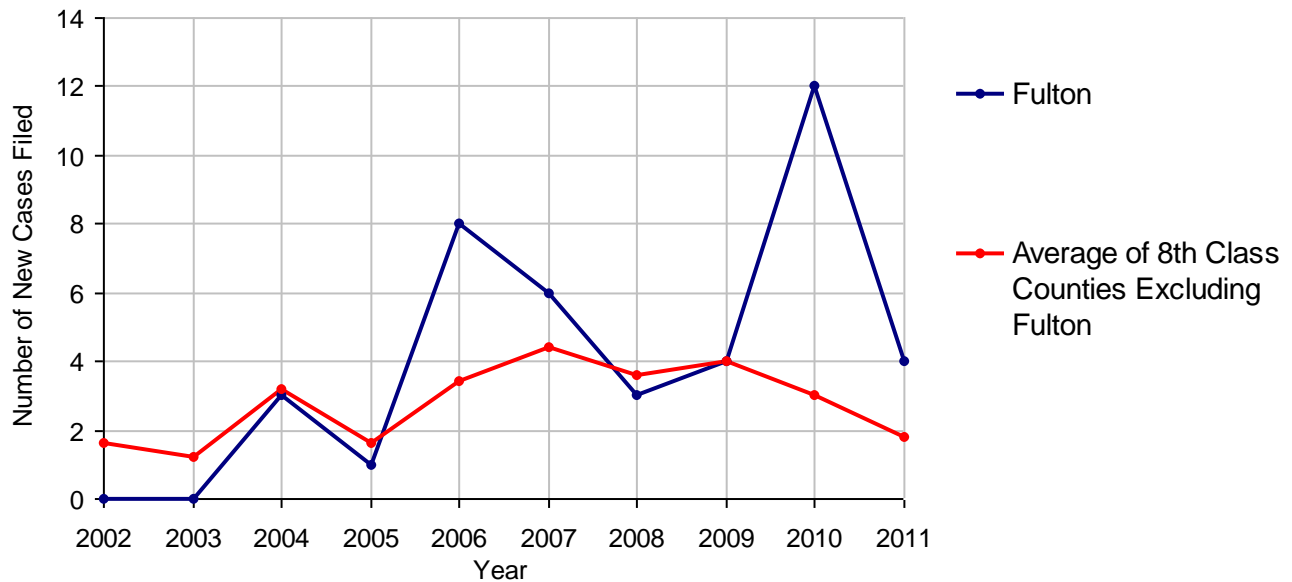
# Fulton County

2011 Population Estimate: 14,801  
 Class of County: 8th  
 No. of Common Pleas Court Judgeships: 5  
 (Fulton and Franklin combined)



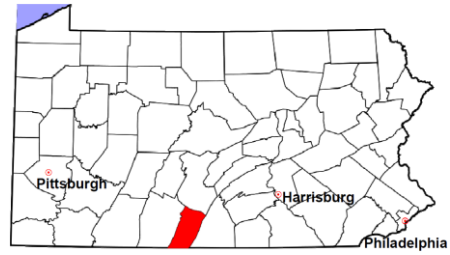
2011 Relinquishments/Terminations	No. of Cases
Cases Pending 1/1/2011	0
New Cases Filed in 2011	4
<b>Cases Available for Processing</b>	<b>4</b>
Processed By:	
Contested before a Judge	0
Uncontested	3 100.0%
Other	0
<b>Cases Processed</b>	<b>3 100.0%</b>
<b>Cases Pending 12/31/2011</b>	<b>1</b>

Relinquishments/Terminations New Cases Filed, 2002-2011



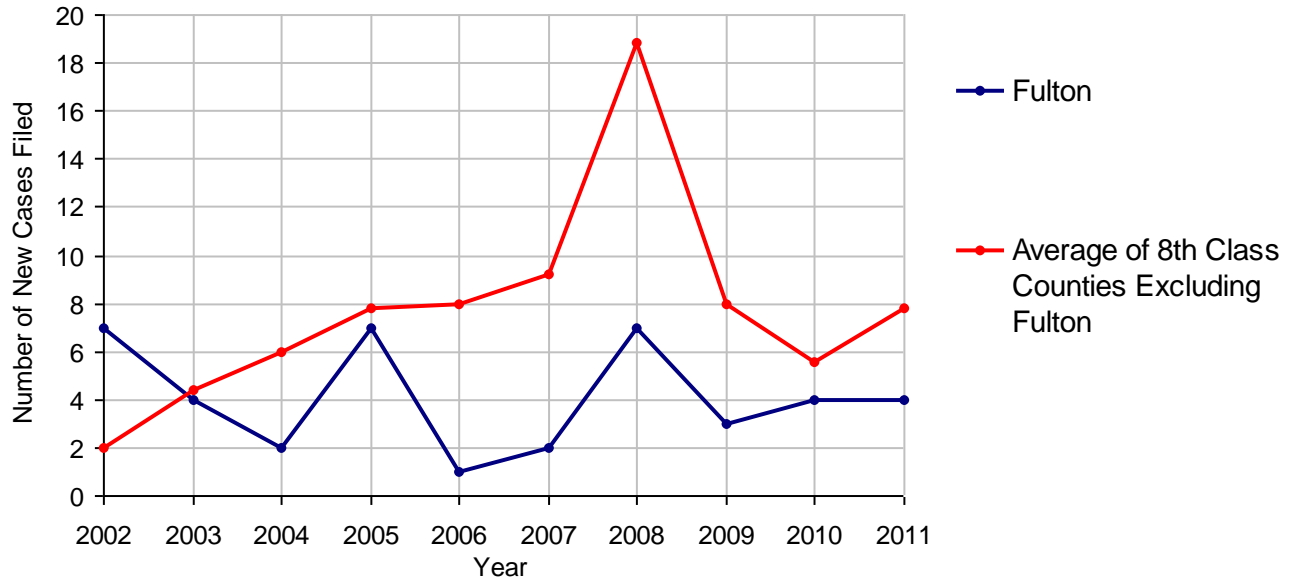
# Fulton County

2011 Population Estimate: 14,801  
 Class of County: 8th  
 No. of Common Pleas Court Judgeships: 5  
 (Fulton and Franklin combined)



<b>2011 Appointment of Guardians</b>		<b>No. of Cases</b>
Cases Pending 1/1/2011		3
New Cases Filed in 2011		4
<b>Cases Available for Processing</b>		<b>7</b>
Processed By:		
Contested before a Judge		0
Uncontested	2	66.7%
Other	1	33.3%
<b>Cases Processed</b>	<b>3</b>	<b>100.0%</b>
<b>Cases Pending 12/31/2011</b>		<b>4</b>

**Appointment of Guardians New Cases Filed, 2002-2011**

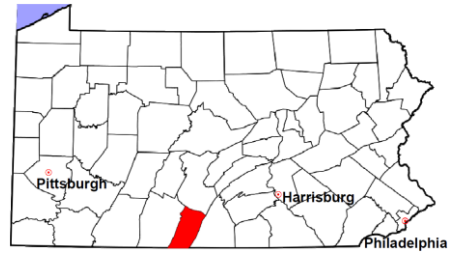


# Fulton County

2011 Population Estimate: 14,801

Class of County: 8th

No. of Common Pleas Court Judgeships: 5  
(Fulton and Franklin combined)



---

## 2011 Jury Activity and Performance Measures

---

A. Juror Days	457
B. Number Sent to Voir Dire	771
Voir Dire Attendance Rate (B/A * 100)	168.7%
C. Number of Jurors Selected	210
Juror Selection Rate (C/B * 100)	27.2%

---

Note: In mid-2011, AOPC began utilizing the National Center for State Courts' Jury Managers' Toolbox for collecting jury data. This has resulted in limited jury performance measures being reported for 2011. Additional data will be available in 2012.