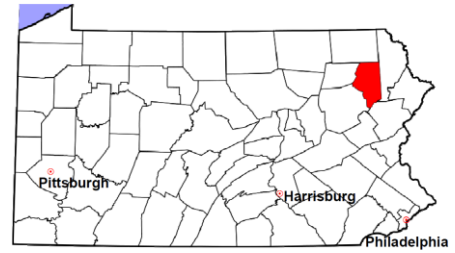


# Lackawanna County

2011 Population Estimate: 214,166  
 Class of County: 3rd  
 No. of Common Pleas Court Judgeships: 9



2011 Criminal	No. of Cases
---------------	--------------

Cases Pending 1/1/2011	819
New Cases Filed in 2011	2,677
Reopened Cases	192
<b>Cases Available for Disposition</b>	<b>3,688</b>

**Disposed by:**

Withdrawn/Dismissed	201	6.8%
ARD	749	25.2%
Guilty Plea	1,834	61.8%
Non-Jury Trial	5	0.2%
Jury Trial	22	0.7%
Inactive	75	2.5%
Other	81	2.7%
<b>Total Cases Disposed</b>	<b>2,967</b>	<b>100.0%</b>

**Cases Pending 12/31/2011** **721**

Cases Awaiting Sentencing 423

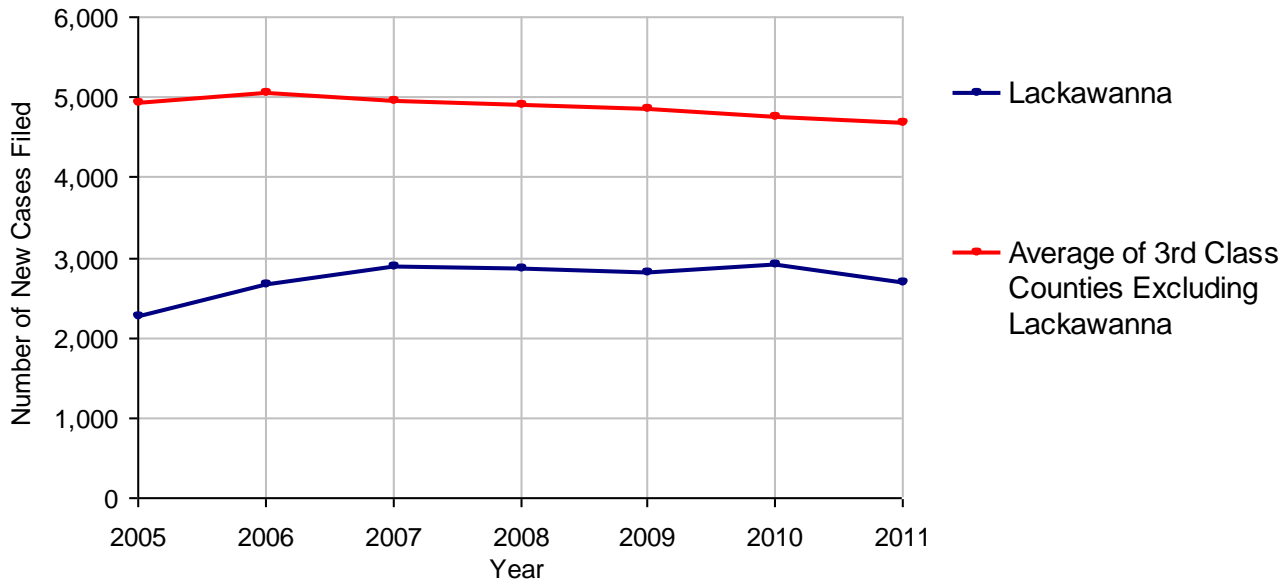
Data provided by CPCMS



**Age of Pending Cases as of 12/31/2011**

0-60 Days	360	49.9%
61-120 Days	171	23.7%
121-180 Days	87	12.1%
181-240 Days	41	5.7%
241-300 Days	29	4.0%
301-360 Days	12	1.7%
Over 360 Days	21	2.9%
<b>Total</b>	<b>721</b>	<b>100.0%</b>

**Criminal New Cases Filed, 2005-2011**

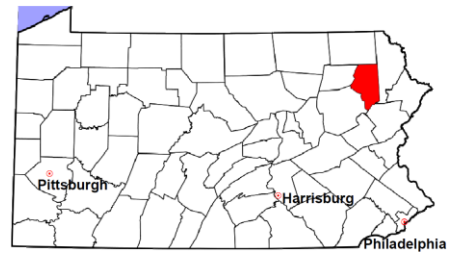


# Lackawanna County

2011 Population Estimate: 214,166

Class of County: 3rd

No. of Common Pleas Court Judgeships: 9



## 2011 Criminal - New Cases by Case Type



Case Type	Felony	Misdemeanor	Summary /Ungraded	Total
Person	152	193	41	386
Property	249	321	58	628
Drug	178	206	3	387
Weapon	16	14	0	30
Public Order	227	221	22	470
Motor Vehicle - DWI/DUI	0	765	3	768
Motor Vehicle - Other	0	6	1	7
Other	0	0	1	1
<b>Total</b>	<b>822</b>	<b>1,726</b>	<b>129</b>	<b>2,677</b>
	<b>30.7%</b>	<b>64.5%</b>	<b>4.8%</b>	<b>100.0%</b>

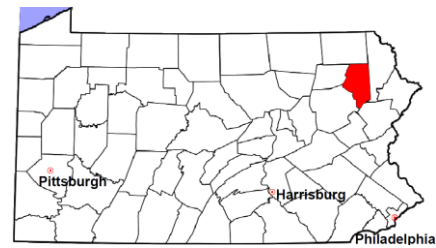
Data provided by CPCMS

# Lackawanna County

2011 Population Estimate: 214,166

Class of County: 3rd

No. of Common Pleas Court Judgeships: 9

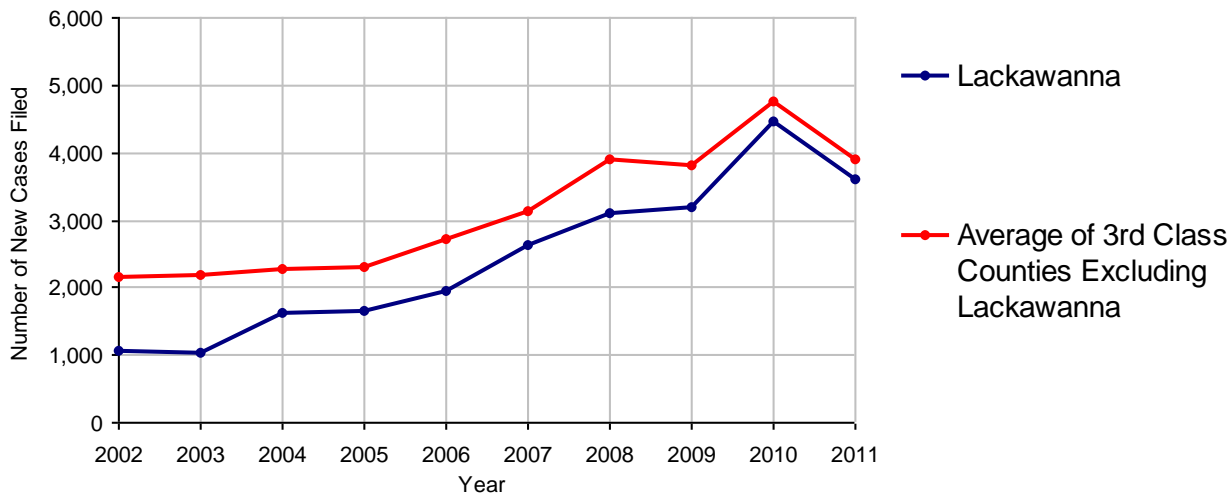


<b>2011 Civil</b>	<b>Civil Action</b>	<b>Other</b>	<b>Total</b>
Cases Pending 1/1/2011	2,051	1,020	3,071
Docketed Cases	2,412	1,206	3,618
Arbitration Appeals	24	0	24
Transferred In	180	0	180
Returned to Active	15	0	15
<b>Cases Available for Processing</b>	<b>4,682</b>	<b>2,226</b>	<b>6,908</b>
Disposed By:			
Default Judgments	166	34	200
Cases Decided by Arbitration Board	89	0	89
Dispositive Motions	288	106	394
Settlements	942	262	1,204
Moved to Inactive Status	0	0	0
Transferred/Withdrawn	48	9	57
Pa.R.J.A. 1901 Administrative Purge	0	0	0
Other	174	35	209
Jury Trial	18	0	18
Non-Jury Trial	19	0	19
<b>Total Cases Disposed</b>	<b>1,744</b>	<b>446</b>	<b>2,190</b>
<b>Cases Pending 12/31/2011</b>	<b>2,938</b>	<b>1,780</b>	<b>4,718</b>

## Age of Pending Cases as of 12/31/2011 (Civil Action Only)

0-6 months	1,849	62.9%
7-12 months	979	33.3%
13-18 months	89	3.0%
19-24 months	20	0.7%
25-30 months	0	
31-36 months	1	<0.1%
37-42 months	0	
43-48 months	0	
49-54 months	0	
55-60 months	0	
61-66 months	0	
67-72 months	0	
Over 72 months	0	
<b>Total</b>	<b>2,938</b>	<b>100.0%</b>

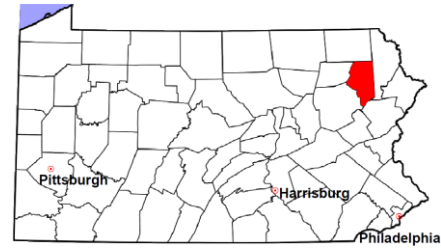
Docketed Cases, 2002-2011



Note: Prior to June 2010, docketed cases under the "Other" category were not reported. The reporting of these cases starting from June 2010 may contribute to an increase in docketed cases from 2009 to 2010.

# Lackawanna County

2011 Population Estimate: 214,166  
 Class of County: 3rd  
 No. of Common Pleas Court Judgeships: 9



## 2011 Civil - Docketed Cases Listed by Case Type

### TORT (does not include mass tort)

Intentional	24
Malicious Prosecution	4
Motor Vehicle	386
Nuisance	5
Premise Liability	130
Product Liability	15
Slander/Libel/Defamation	6
Other	161

### MASS TORT

Asbestos	0
Tobacco	0
Toxic Tort - DES	0
Toxic Tort - Implant	0
Toxic Waste	0
Other	0

### PROFESSIONAL LIABILITY

Dental	0
Legal	8
Medical Malpractice	36
Other	6

### CONTRACT

(does not include judgments)

Buyer Plaintiff	23
Debt Collection:	
Credit Card	980
Debt Collection: Other	375
Employment Dispute:	
Discrimination	8
Employment Dispute: Other	26
Other	210

### REAL PROPERTY

Ejectment*	96
Eminent Domain/ Condemnation*	10
Ground Rent	0
Landlord/Tenant Dispute	9
Mortgage Forclosures:	
Residential*	462
Commercial*	67
Partition of Real Property*	1
Quiet Title*	52
Other*	120

### CIVIL APPEALS

*Administrative Agencies*

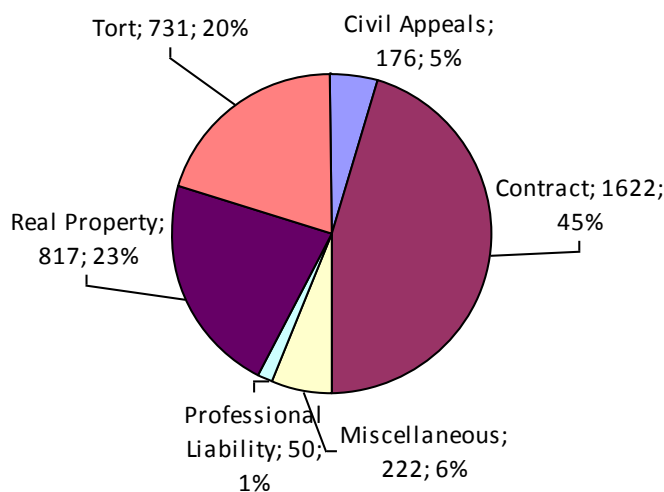
Board of Assessment*	22
Board of Elections*	9
Dept. of Transportation*	92
Zoning Board*	15
Statutory Appeal - Other*	0
Other*	38

### MISCELLANEOUS

Common Law/ Statutory Arbitration*	2
Declaratory Judgment*	8
Mandamus*	9
Non-Domestic Relations Restraining Order*	1
Quo Warranto*	0
Replevin*	20
Other*	182

**TOTAL DOCKETED CASES:**  
**3,618**

\* Civil Other



### Of the Docketed Cases:

Pro Se Filings:	6	0.2%
Class Action Suits:	0	
MDJ Appeals:	261	7.2%

# Lackawanna County

2011 Population Estimate: 214,166  
 Class of County: 3rd  
 No. of Common Pleas Court Judgeships: 9



## 2011 Protection From Abuse

**No. of  
Petitions**

Cases Pending 1/1/2011	155
New Cases Filed in 2011	876

*Of these, Petitions Requesting Temporary Orders: 876 (100.0%)  
 Temporary Orders DENIED: 8 (0.9%), Temporary Orders GRANTED: 868 (99.1%)*

**Cases Available for Processing 1,031**

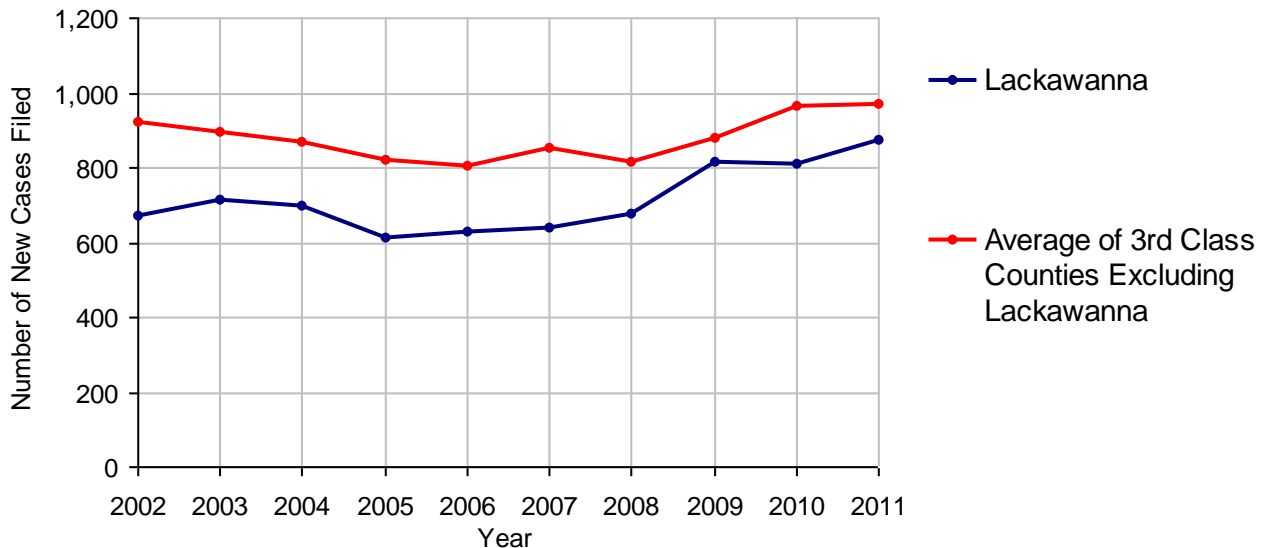
Processed By:

Temporary Order DENIED After Ex Parte Hearing and No Evidentiary Hearing Scheduled	5	0.7%
Temporary Order DISMISSED After Evidentiary Hearing and No Final Order Entered	7	0.9%
Final Order DENIED After Evidentiary Hearing Before a Judge	103	13.6%
Final Order GRANTED After Evidentiary Hearing Before a Judge	89	11.8%
Plaintiff Did Not Appear For Evidentiary Hearing	43	5.7%
Final Order by STIPULATION OR AGREEMENT Between the Parties	262	34.7%
Petition WITHDRAWN by Plaintiff	241	31.9%
TRANSFERRED to Another Jurisdiction	0	
DECEASED Party	0	
Other	6	0.8%

**Cases Processed 756 100.0%**

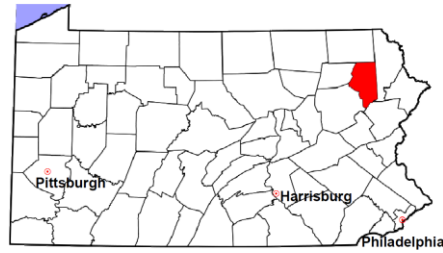
**Cases Pending 12/31/2011 275**

**PFA New Cases Filed, 2002-2011**

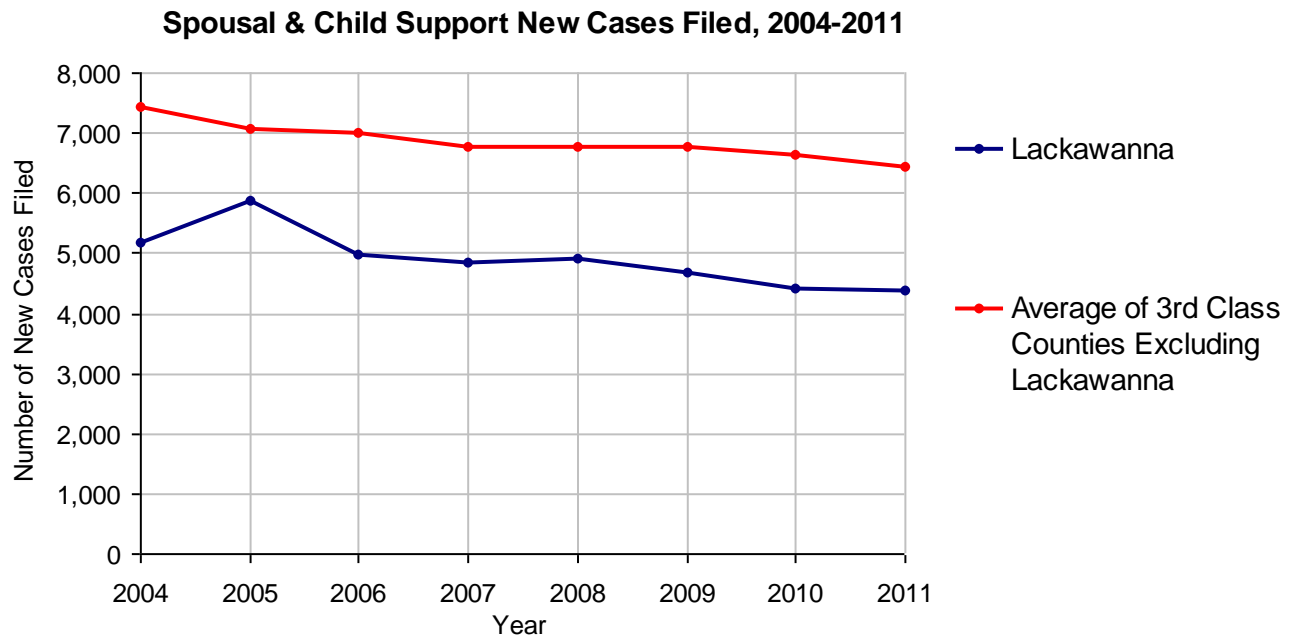


# Lackawanna County

2011 Population Estimate: 214,166  
 Class of County: 3rd  
 No. of Common Pleas Court Judgeships: 9



<b>2011 Spousal &amp; Child Support</b>	<b>No. of Petitions</b>	
Cases Pending 1/1/2011	680	
New Cases Filed in 2011	4,387	
Dockets Transferred In (+)	31	
Dockets Transferred Out (-)	33	
<b>Cases Available for Processing</b>	<b>5,065</b>	
Processed By:		
Judge	15	0.3%
Intake Officer	4,196	97.5%
Hearing Officer	93	2.2%
Other	1	<0.1%
<b>Cases Processed</b>	<b>4,305</b>	<b>100.0%</b>
<b>Cases Pending 12/31/2011</b>	<b>760</b>	

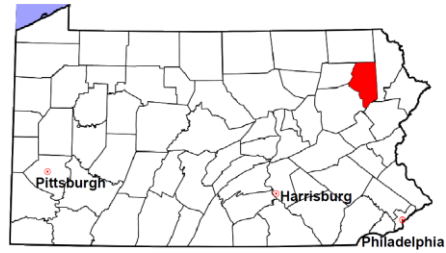


# Lackawanna County

2011 Population Estimate: 214,166

Class of County: 3rd

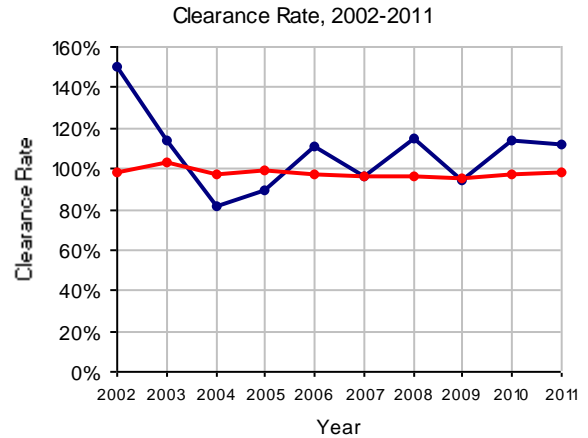
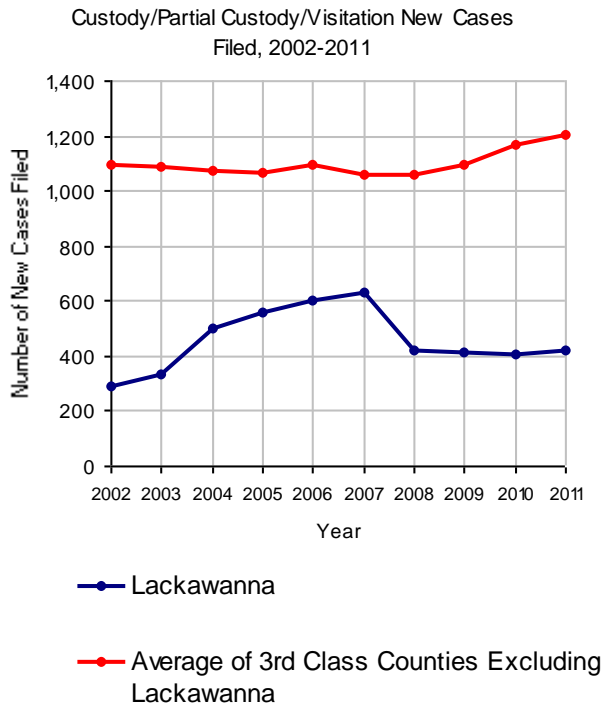
No. of Common Pleas Court Judgeships: 9



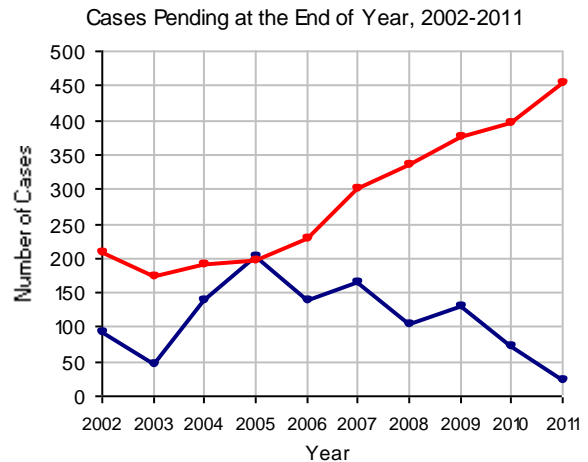
## 2011 Custody/Partial Custody/Visitation

No. of  
Petitions

Cases Pending 1/1/2011	73
New Cases Filed in 2011	424
<b>Cases Available for Processing</b>	<b>497</b>
Processed By:	
Judge	35 7.4%
Non-Judicial Officer	338 71.2%
Other	102 21.5%
<b>Cases Processed</b>	<b>475 100.0%</b>
<b>Cases Pending 12/31/2011</b>	<b>22</b>

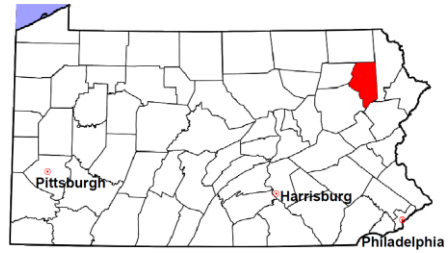


Note: Clearance Rate = Cases Processed / New Cases Filed



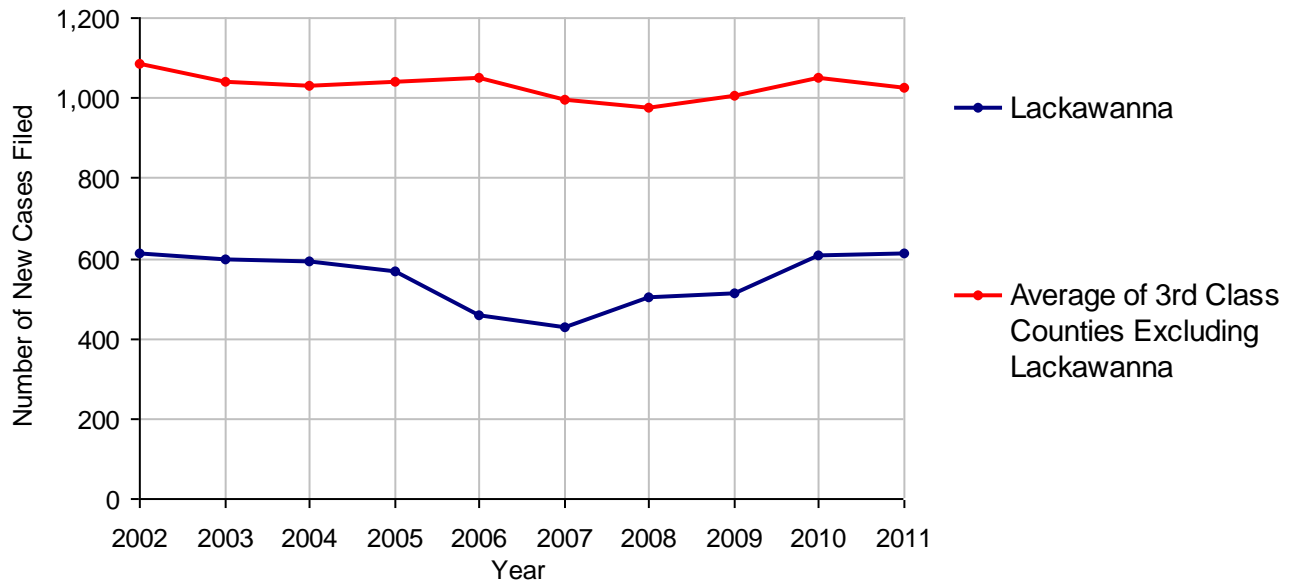
# Lackawanna County

2011 Population Estimate: 214,166  
 Class of County: 3rd  
 No. of Common Pleas Court Judgeships: 9



<b>2011 Divorce</b>	<b>No. of Petitions</b>	
Cases Pending 1/1/2011	185	
New Cases Filed in 2011	613	
<b>Cases Available for Processing</b>	<b>798</b>	
Processed By:		
Contested Before a Judge	0	
Contested Before a Master	60	10.6%
Uncontested	508	89.4%
Other	0	
<b>Cases Processed</b>	<b>568</b>	<b>100.0%</b>
<b>Cases Pending 12/31/2011</b>	<b>230</b>	

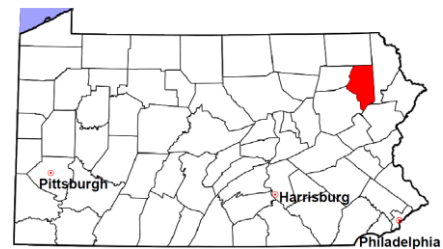
**Divorce New Cases Filed, 2002-2011**





# Lackawanna County

2011 Population Estimate: 214,166  
 Class of County: 3rd  
 No. of Common Pleas Court Judgeships: 9



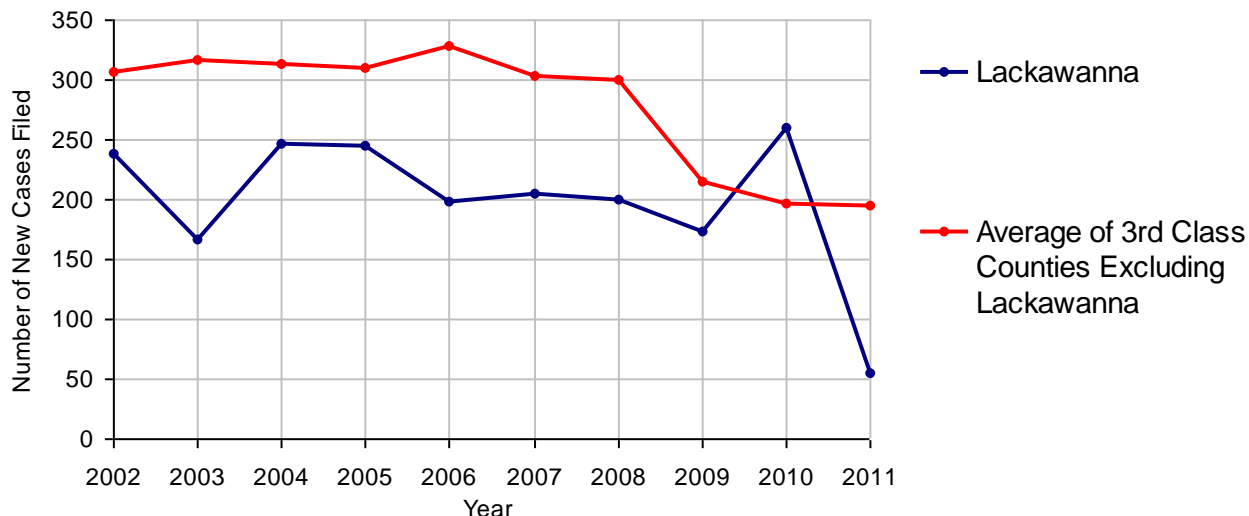
## 2011 Juvenile Dependency - Active Dependent Inventory



	Abuse/ Neglect	Status Offenses	Total
Cases Pending 1/1/2011	54	2	56
New Petitions Filed in 2011	47	8	55
Other	2	0	2
<b>Total Petitions Available for Processing</b>	<b>103</b>	<b>10</b>	<b>113</b>
Processed by:			
Adjudicated Dependent			
Judge	34	3	37
Master	0	0	0
Adjudicated NOT Dependent			
Judge	8	1	9
Master	0	0	0
Withdrawn/Dismissed/Inactive	0	0	0
Other	12	2	14
<b>Total Petitions Processed</b>	<b>54</b>	<b>6</b>	<b>60</b>
<b>Cases Pending 12/31/2011</b>	<b>49</b>	<b>4</b>	<b>53</b>

Data provided by CPCMS

Abuse/Neglect and Status Offenses New Cases Filed, 2002-2011



Note: (1) Dependency data for 2002-2010 were collected manually. Dependency data for 2011 were provided by CPCMS. (2) A sharp increase or decrease may reflect changes in practice or counting methods.

# Lackawanna County

2011 Population Estimate: 214,166

Class of County: 3rd

No. of Common Pleas Court Judgeships: 9



## 2011 Juvenile Dependency - Adjudicated Dependent Inventory

	Abuse/ Neglect	Status Offenses	Total	
Cases Pending 1/1/2011	378	26	404	
New Adjudicated Dependent Cases	34	3	37	
Other	30	6	36	
<b>Total Adjudicated Dependent Cases</b>	<b>442</b>	<b>35</b>	<b>477</b>	
<b><u>Court Supervision Terminated:</u></b>				
Family Reunification	13	0	13	11.0%
Adoption	13	0	13	11.0%
Placement with a Relative/Guardian	67	13	80	67.8%
Aged Out	6	1	7	5.9%
Other Permanency Outcomes*	2	1	3	2.5%
Other**	2	0	2	1.7%
<b>Total Adjudicated Dependent Cases Terminated</b>	<b>103</b>	<b>15</b>	<b>118</b>	<b>100.0%</b>
<b>Cases Pending 12/31/2011</b>	<b>339</b>	<b>20</b>	<b>359</b>	

Data provided by CPCMS

\* Other Permanency Outcomes include: adjudicated delinquent, death due to natural causes, emancipation, permanent living arrangement, and parent has come forward.

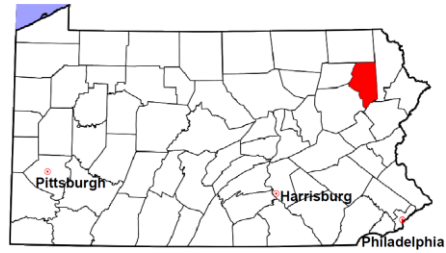
\*\* Other includes cases where Court Supervision is terminated due to transfer out of jurisdiction, withdrawal and administrative closures.

# Lackawanna County

2011 Population Estimate: 214,166

Class of County: 3rd

No. of Common Pleas Court Judgeships: 9

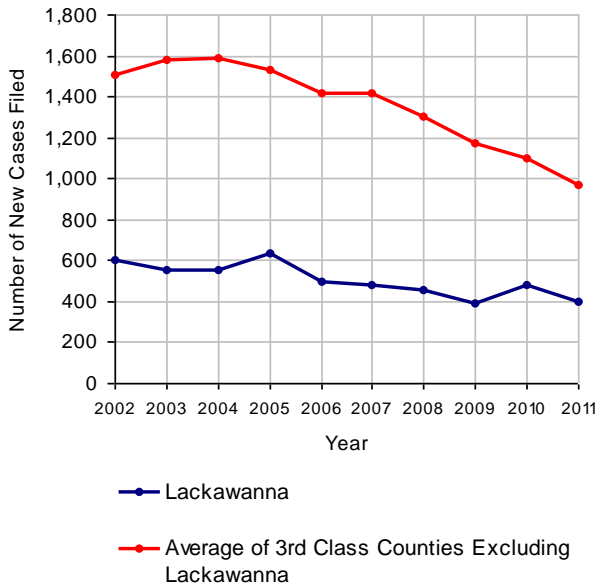


## 2011 Juvenile Delinquency

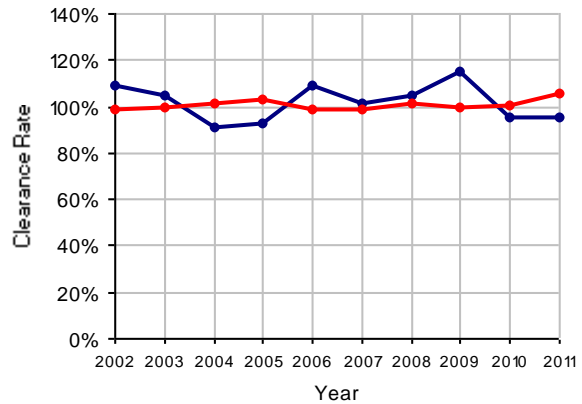
**No. of Cases**

Cases Pending 1/1/2011	266
New Cases Filed in 2011	398
<b>Cases Available for Processing</b>	<b>664</b>
Processed By:	
Judge	147 38.6%
<b>Non-Judicial Officer</b>	<b>178 46.7%</b>
Other	56 14.7%
<b>Cases Processed</b>	<b>381 100.0%</b>
<b>Cases Pending 12/31/2011</b>	<b>283</b>

Juvenile Delinquency New Cases Filed, 2002-2011

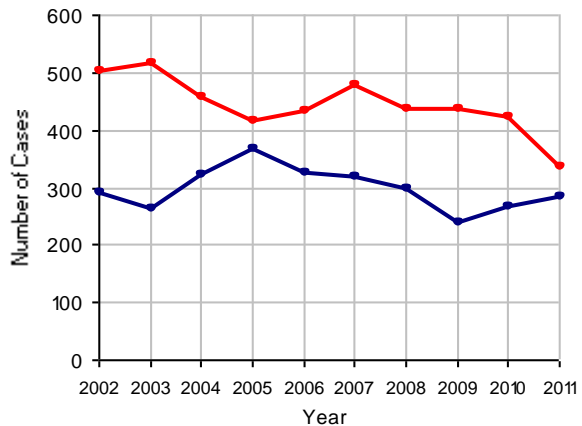


Clearance Rate, 2002-2011



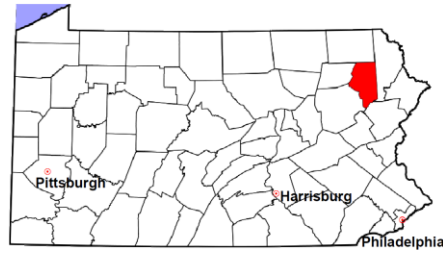
Note: Clearance Rate = Cases Processed / New Cases Filed

Cases Pending at the End of Year, 2002-2011



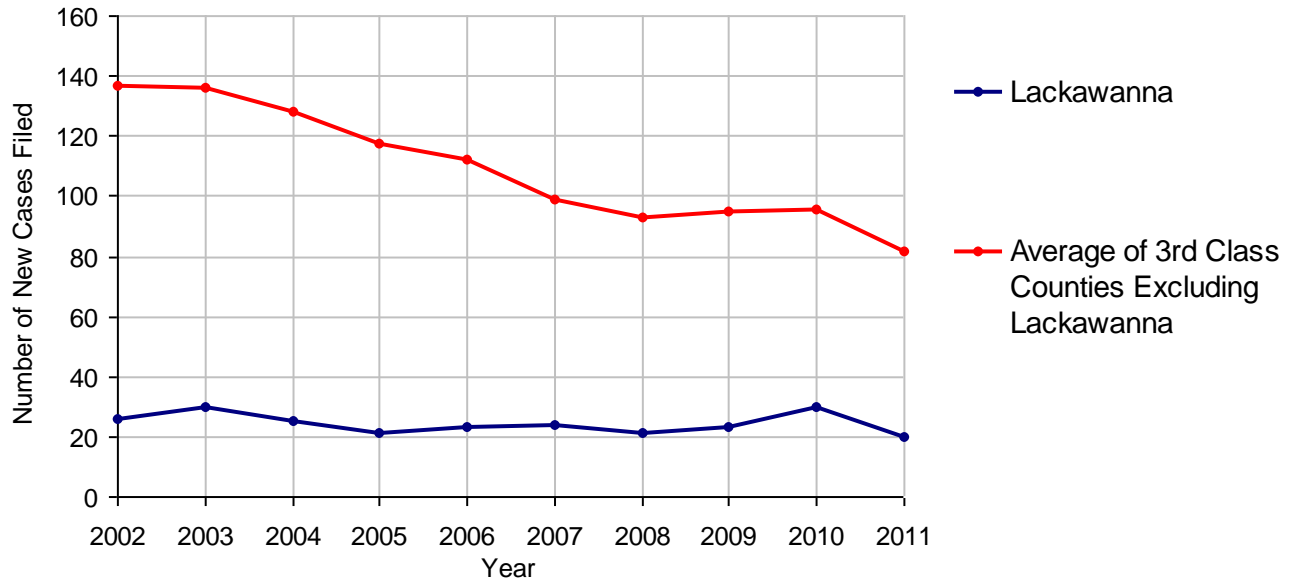
# Lackawanna County

2011 Population Estimate: 214,166  
 Class of County: 3rd  
 No. of Common Pleas Court Judgeships: 9



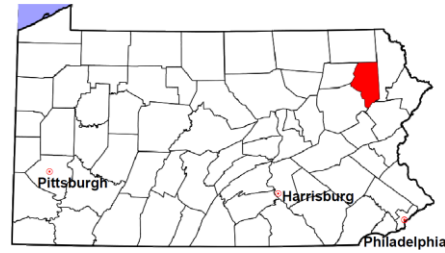
<b>2011 Accounts</b>	<b>No. of Cases</b>	
Cases Pending 1/1/2011	31	
New Cases Filed in 2011	20	
<b>Cases Available for Processing</b>	<b>51</b>	
Processed By:		
Contested before a Judge	4	12.9%
Contested before a Non-judicial Officer	0	
Uncontested	26	83.9%
Other	1	3.2%
<b>Cases Processed</b>	<b>31</b>	<b>100.0%</b>
<b>Cases Pending 12/31/2011</b>	<b>20</b>	

**Accounts New Cases Filed, 2002-2011**



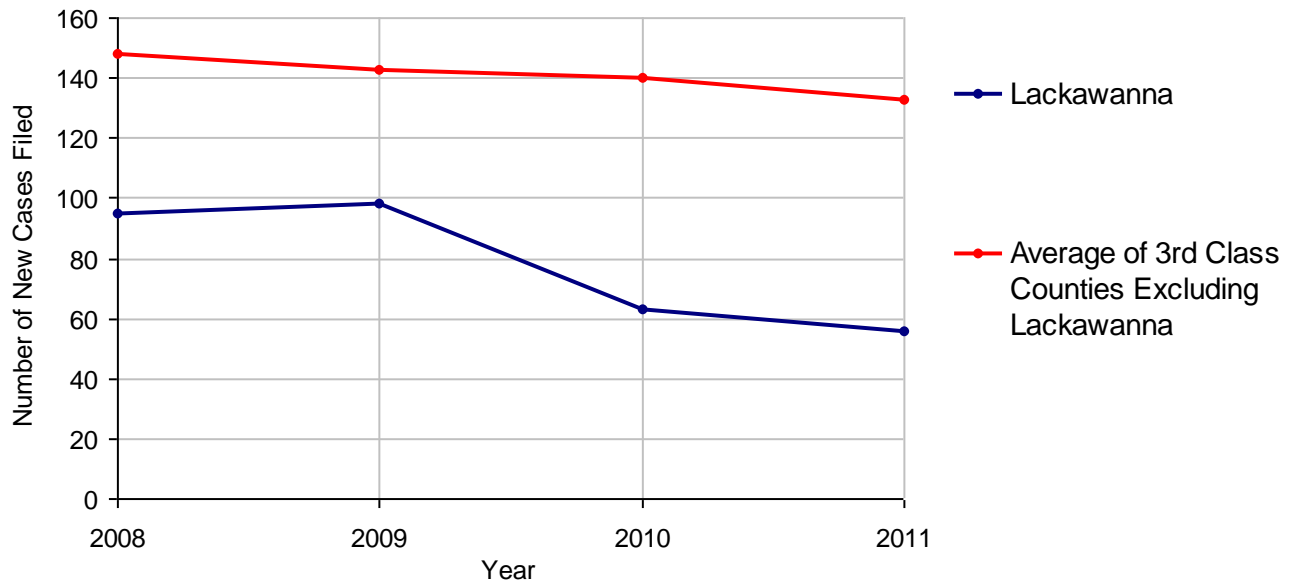
# Lackawanna County

2011 Population Estimate: 214,166  
 Class of County: 3rd  
 No. of Common Pleas Court Judgeships: 9



<b>2011 Adoptions</b>		<b>No. of Cases</b>	
Cases Pending 1/1/2011		9	
New Cases Filed in 2011		56	
<b>Cases Available for Processing</b>		<b>65</b>	
Processed By:			
Contested before a Judge	Granted	0	
	Denied	0	
Uncontested	Granted	44	100.0%
	Denied	0	
Other		0	
<b>Cases Processed</b>		<b>44</b>	<b>100.0%</b>
<b>Cases Pending 12/31/2011</b>		<b>21</b>	

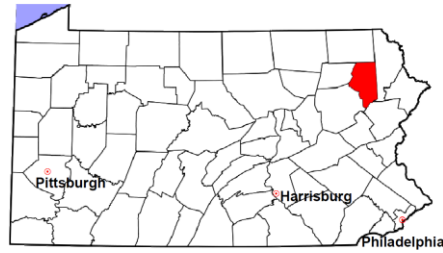
**Adoptions New Cases Filed, 2008-2011**



Note: Prior to 2008, each petition was counted as one new case, regardless of the number of children listed on the petition. Starting in 2008, each child listed on a petition is counted as a separate case. Therefore, statistics for the years since 2008 should not be compared to those for the years prior to 2008.

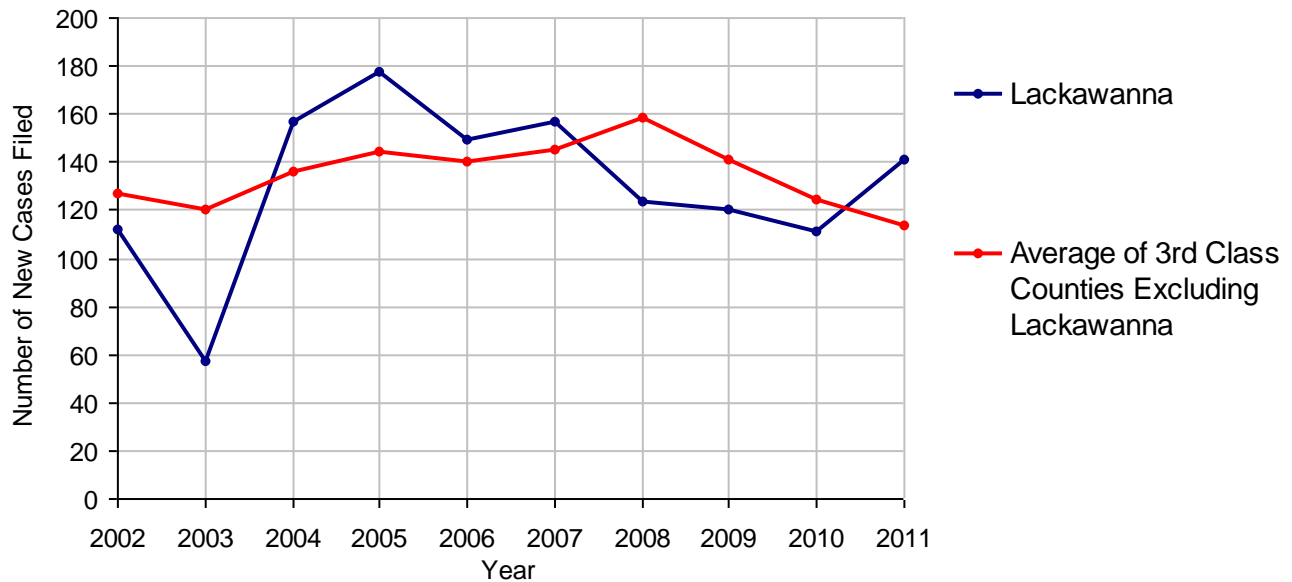
# Lackawanna County

2011 Population Estimate: 214,166  
 Class of County: 3rd  
 No. of Common Pleas Court Judgeships: 9



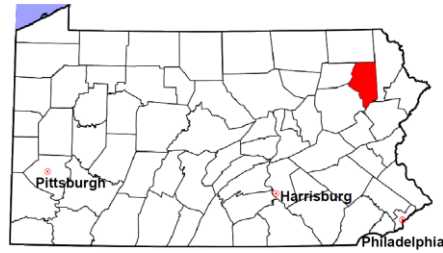
2011 Relinquishments/Terminations	No. of Cases
Cases Pending 1/1/2011	62
New Cases Filed in 2011	141
<b>Cases Available for Processing</b>	<b>203</b>
Processed By:	
Contested before a Judge	2      1.4%
Uncontested	133    95.7%
Other	4      2.9%
<b>Cases Processed</b>	<b>139    100.0%</b>
<b>Cases Pending 12/31/2011</b>	<b>64</b>

Relinquishments/Terminations New Cases Filed, 2002-2011



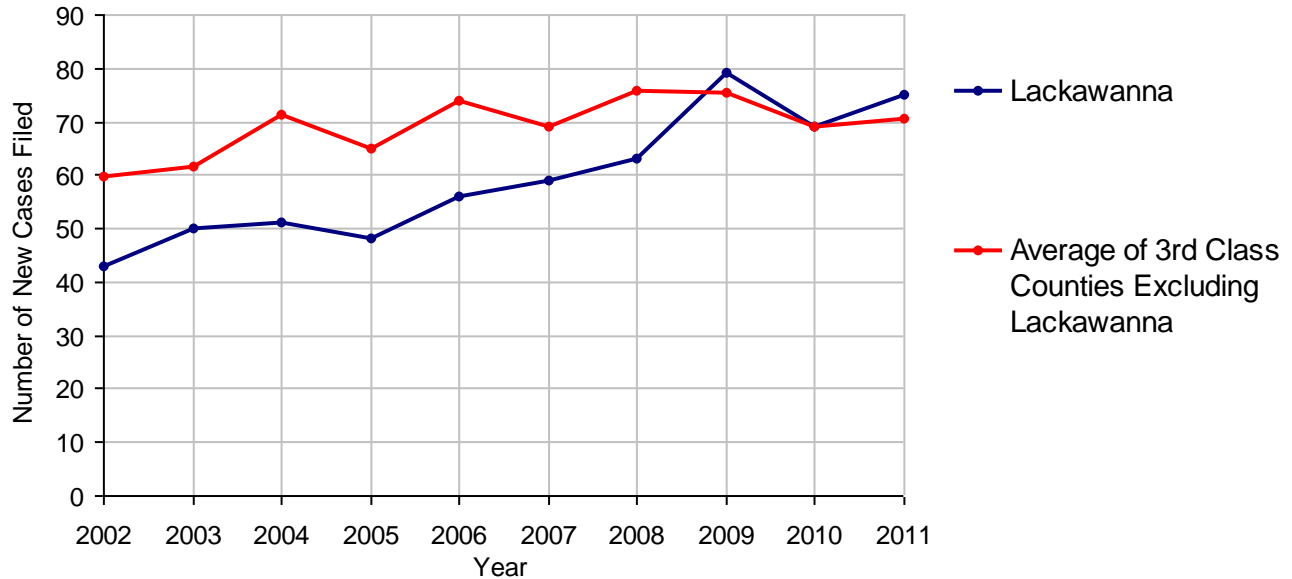
# Lackawanna County

2011 Population Estimate: 214,166  
 Class of County: 3rd  
 No. of Common Pleas Court Judgeships: 9



<b>2011 Appointment of Guardians</b>		<b>No. of Cases</b>
Cases Pending 1/1/2011		40
New Cases Filed in 2011		75
<b>Cases Available for Processing</b>		<b>115</b>
Processed By:		
Contested before a Judge		0
Uncontested	59	89.4%
Other	7	10.6%
<b>Cases Processed</b>	<b>66</b>	<b>100.0%</b>
<b>Cases Pending 12/31/2011</b>		<b>49</b>

**Appointment of Guardians New Cases Filed, 2002-2011**

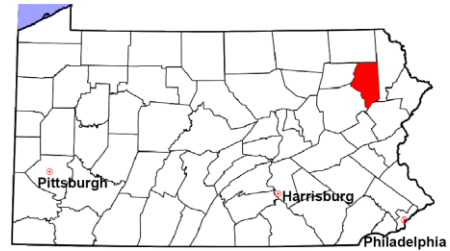


# Lackawanna County

2011 Population Estimate: 214,166

Class of County: 3rd

No. of Common Pleas Court Judgeships: 9



---

## 2011 Jury Activity and Performance Measures

---

A. Juror Days	3,914
B. Number Sent to Voir Dire	2,602
Voir Dire Attendance Rate (B/A * 100)	66.5%
C. Number of Jurors Selected	541
Juror Selection Rate (C/B * 100)	20.8%

---

Note: In mid-2011, AOPC began utilizing the National Center for State Courts' Jury Managers' Toolbox for collecting jury data. This has resulted in limited jury performance measures being reported for 2011. Additional data will be available in 2012.