

# Washington County

2011 Population Estimate: 208,282  
 Class of County: 4th  
 No. of Common Pleas Court Judgeships: 6



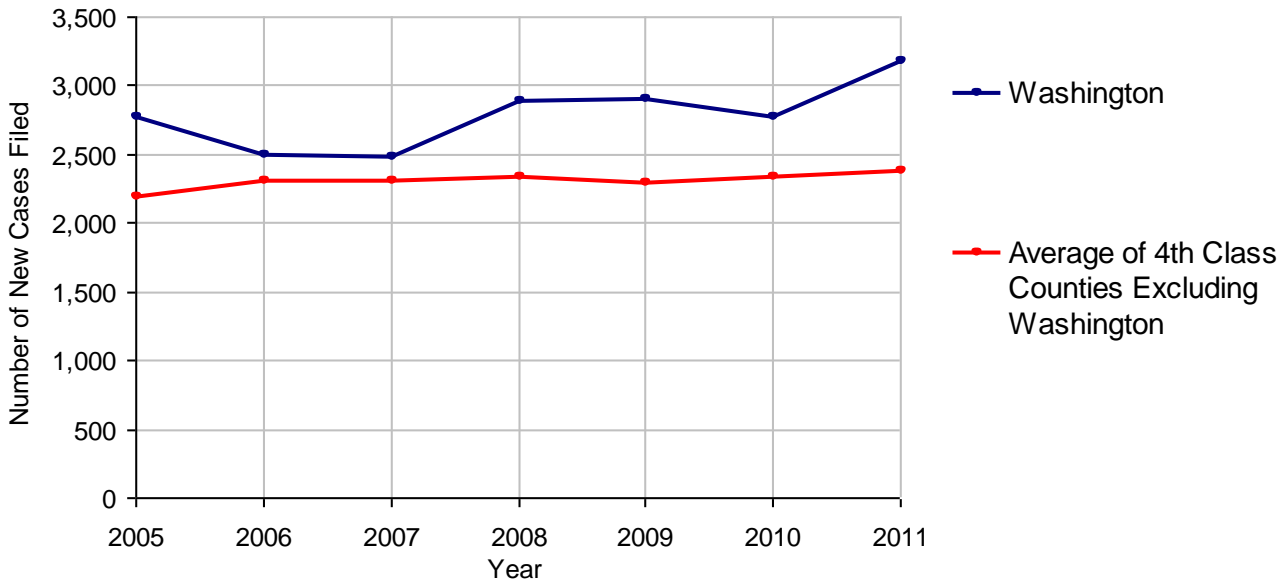
2011 Criminal	No. of Cases
Cases Pending 1/1/2011	960
New Cases Filed in 2011	3,174
Reopened Cases	161
<b>Cases Available for Disposition</b>	<b>4,295</b>
<b>Disposed by:</b>	
Withdrawn/Dismissed	129 4.1%
ARD	634 20.0%
Guilty Plea	2,063 65.0%
Non-Jury Trial	20 0.6%
Jury Trial	10 0.3%
Inactive	195 6.1%
Other	123 3.9%
<b>Total Cases Disposed</b>	<b>3,174 100.0%</b>
<b>Cases Pending 12/31/2011</b>	<b>1,121</b>
Cases Awaiting Sentencing	40



Age of Pending Cases as of 12/31/2011		
0-60 Days	499	44.5%
61-120 Days	275	24.5%
121-180 Days	140	12.5%
181-240 Days	77	6.9%
241-300 Days	50	4.5%
301-360 Days	31	2.8%
Over 360 Days	49	4.4%
<b>Total</b>	<b>1,121</b>	<b>100.0%</b>

Data provided by CPCMS

**Criminal New Cases Filed, 2005-2011**

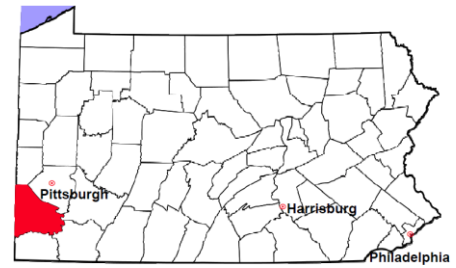


# Washington County

2011 Population Estimate: 208,282

Class of County: 4th

No. of Common Pleas Court Judgeships: 6



## 2011 Criminal - New Cases by Case Type



Case Type	Felony	Misdemeanor	Summary /Ungraded	Total
Person	188	239	15	442
Property	412	494	39	945
Drug	149	433	13	595
Weapon	24	12	2	38
Public Order	60	213	18	291
Motor Vehicle - DWI/DUI	0	823	13	836
Motor Vehicle - Other	0	8	7	15
Other	9	3	0	12
<b>Total</b>	<b>842</b>	<b>2,225</b>	<b>107</b>	<b>3,174</b>
	<b>26.5%</b>	<b>70.1%</b>	<b>3.4%</b>	<b>100.0%</b>

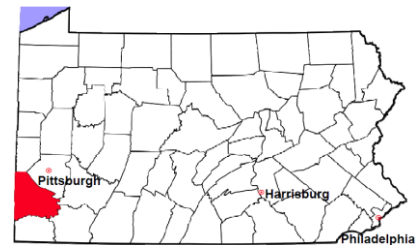
Data provided by CPCMS

# Washington County

2011 Population Estimate: 208,282

Class of County: 4th

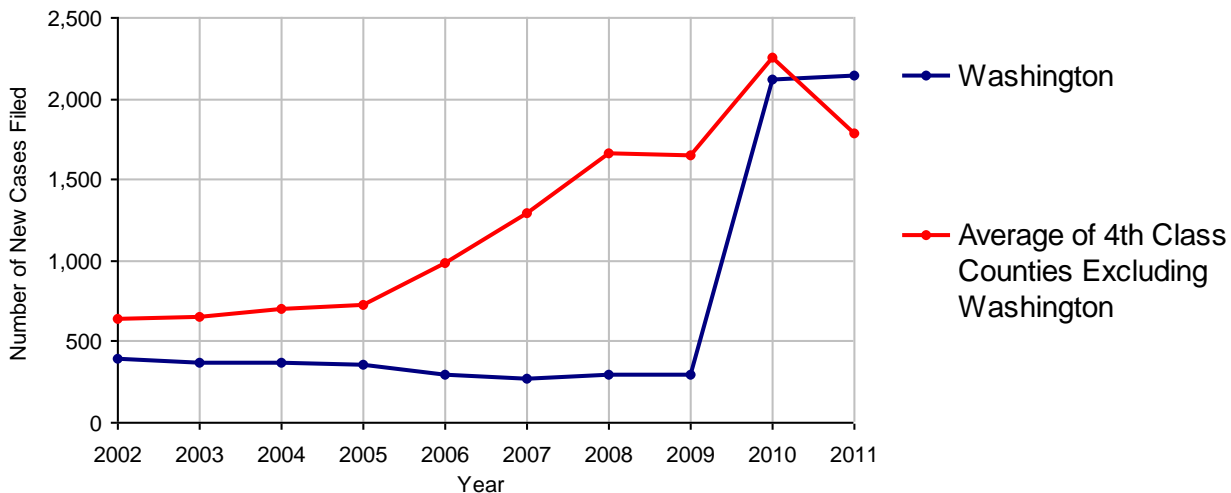
No. of Common Pleas Court Judgeships: 6



<b>2011 Civil</b>	<b>Civil Action</b>	<b>Other</b>	<b>Total</b>
Cases Pending 1/1/2011	549	525	1,074
Docketed Cases	848	1,299	2,147
Arbitration Appeals	7	22	29
Transferred In	0	0	0
Returned to Active	13	0	13
<b>Cases Available for Processing</b>	<b>1,417</b>	<b>1,846</b>	<b>3,263</b>
Disposed By:			
Default Judgments	715	206	921
Cases Decided by Arbitration Board	21	46	67
Dispositive Motions	93	21	114
Settlements	108	19	127
Moved to Inactive Status	0	0	0
Transferred/Withdrawn	64	31	95
Pa.R.J.A. 1901 Administrative Purge	143	370	513
Other	3	3	6
Jury Trial	9	5	14
Non-Jury Trial	3	2	5
<b>Total Cases Disposed</b>	<b>1,159</b>	<b>703</b>	<b>1,862</b>
<b>Cases Pending 12/31/2011</b>	<b>258</b>	<b>1,143</b>	<b>1,401</b>

Age of Pending Cases as of 12/31/2011 (Civil Action Only)		
0-6 months	108	41.9%
7-12 months	68	26.4%
13-18 months	39	15.1%
19-24 months	17	6.6%
25-30 months	7	2.7%
31-36 months	10	3.9%
37-42 months	3	1.2%
43-48 months	1	0.4%
49-54 months	1	0.4%
55-60 months	1	0.4%
61-66 months	1	0.4%
67-72 months	0	
Over 72 months	2	0.8%
<b>Total</b>	<b>258</b>	<b>100.0%</b>

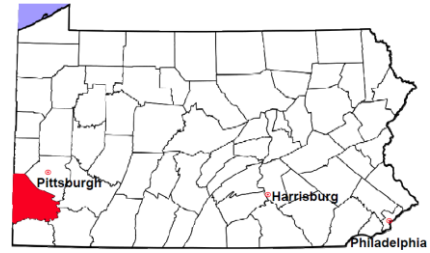
**Docketed Cases, 2002-2011**



Note: Prior to June 2010, docketed cases under the "Other" category were not reported. The reporting of these cases starting from June 2010 may contribute to an increase in docketed cases from 2009 to 2010.

# Washington County

2011 Population Estimate: 208,282  
 Class of County: 4th  
 No. of Common Pleas Court Judgeships: 6



## 2011 Civil - Docketed Cases Listed by Case Type

### TORT (does not include mass tort)

Intentional	273
Malicious Prosecution	0
Motor Vehicle	5
Nuisance	0
Premise Liability	0
Product Liability	0
Slander/Libel/Defamation	0
Other	0

### MASS TORT

Asbestos	11
Tobacco	0
Toxic Tort - DES	0
Toxic Tort - Implant	0
Toxic Waste	0
Other	0

### PROFESSIONAL LIABILITY

Dental	0
Legal	0
Medical Malpractice	39
Other	0

### CONTRACT

(does not include judgments)

Buyer Plaintiff	1
Debt Collection:	
Credit Card	496
Debt Collection: Other	1
Employment Dispute:	
Discrimination	0
Employment Dispute: Other	0
Other	0

### REAL PROPERTY

Ejectment*	60
Eminent Domain/ Condemnation*	45
Ground Rent	0
Landlord/Tenant Dispute	22
Mortgage Forclosures:	
Residential*	365
Commercial*	4
Partition of Real Property*	26
Quiet Title*	18
Other*	4

### CIVIL APPEALS

*Administrative Agencies*

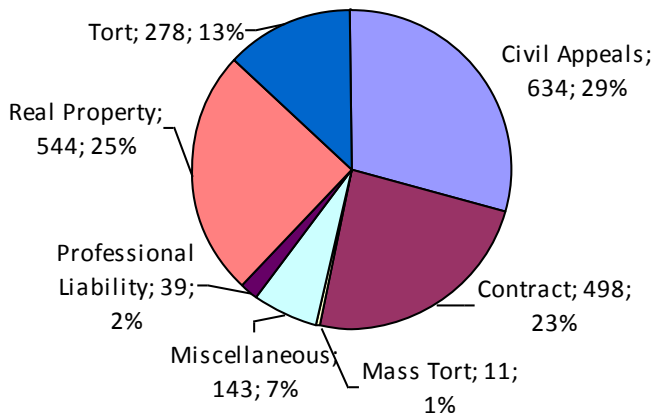
Board of Assessment*	124
Board of Elections*	0
Dept. of Transportation*	97
Zoning Board*	8
Statutory Appeal - Other*	0
Other*	405

### MISCELLANEOUS

Common Law/ Statutory Arbitration*	75
Declaratory Judgment*	11
Mandamus*	5
Non-Domestic Relations Restraining Order*	0
Quo Warranto*	0
Replevin*	24
Other*	28

**TOTAL DOCKETED CASES:**  
**2,147**

\* Civil Other



### Of the Docketed Cases:

Pro Se Filings:	50	2.3%
Class Action Suits:	0	
MDJ Appeals:	226	10.5%

# Washington County

2011 Population Estimate: 208,282  
 Class of County: 4th  
 No. of Common Pleas Court Judgeships: 6



## 2011 Protection From Abuse

**No. of  
Petitions**

Cases Pending 1/1/2011	351
New Cases Filed in 2011	750

*Of these, Petitions Requesting Temporary Orders: 750 (100.0%)  
 Temporary Orders DENIED: 117 (15.6%), Temporary Orders GRANTED: 633 (84.4%)*

**Cases Available for Processing 1,101**

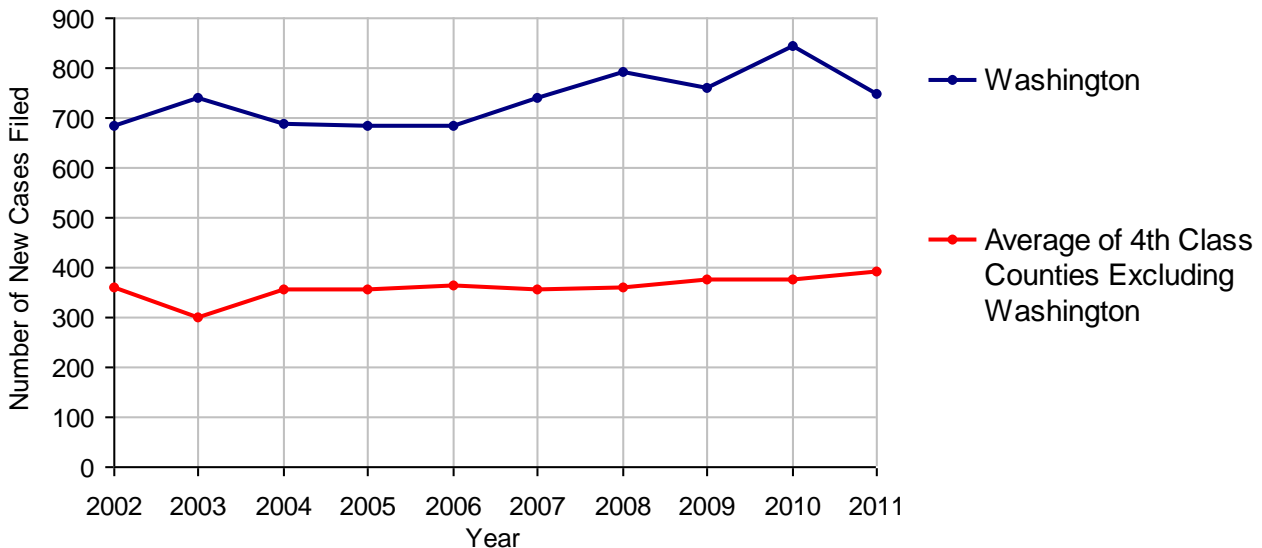
Processed By:

Temporary Order DENIED After Ex Parte Hearing and No Evidentiary Hearing Scheduled	37	4.8%
Temporary Order DISMISSED After Evidentiary Hearing and No Final Order Entered	1	0.1%
Final Order DENIED After Evidentiary Hearing Before a Judge	35	4.5%
Final Order GRANTED After Evidentiary Hearing Before a Judge	143	18.5%
Plaintiff Did Not Appear For Evidentiary Hearing	59	7.6%
Final Order by STIPULATION OR AGREEMENT Between the Parties	195	25.2%
Petition WITHDRAWN by Plaintiff	300	38.8%
TRANSFERRED to Another Jurisdiction	1	0.1%
DECEASED Party	2	0.3%
Other	0	

**Cases Processed 773 100.0%**

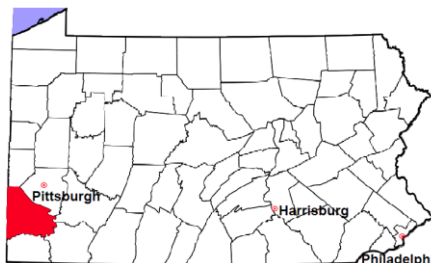
**Cases Pending 12/31/2011 328**

**PFA New Cases Filed, 2002-2011**

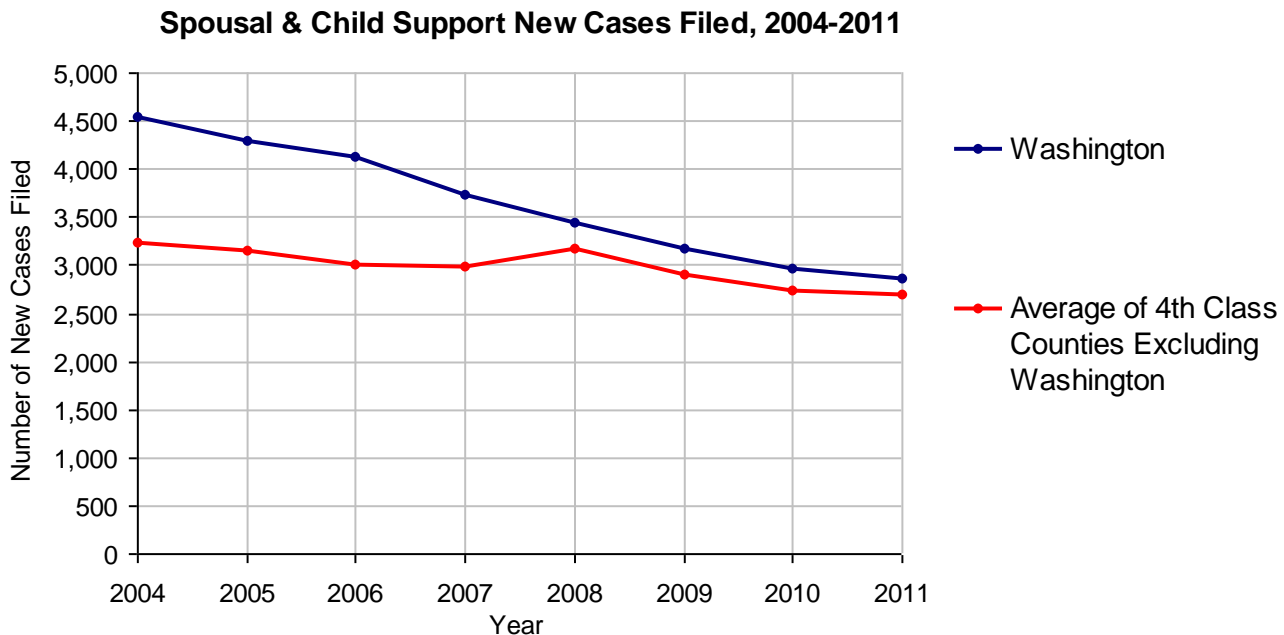


# Washington County

2011 Population Estimate: 208,282  
 Class of County: 4th  
 No. of Common Pleas Court Judgeships: 6



<b>2011 Spousal &amp; Child Support</b>	<b>No. of Petitions</b>	
Cases Pending 1/1/2011	432	
New Cases Filed in 2011	2,857	
Dockets Transferred In (+)	26	
Dockets Transferred Out (-)	29	
<b>Cases Available for Processing</b>	<b>3,286</b>	
Processed By:		
Judge	38	1.4%
Intake Officer	2,614	94.0%
Hearing Officer	129	4.6%
Other	0	
<b>Cases Processed</b>	<b>2,781</b>	<b>100.0%</b>
<b>Cases Pending 12/31/2011</b>	<b>505</b>	

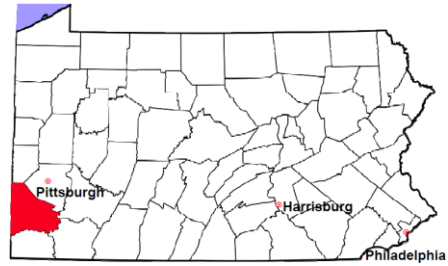


# Washington County

2011 Population Estimate: 208,282

Class of County: 4th

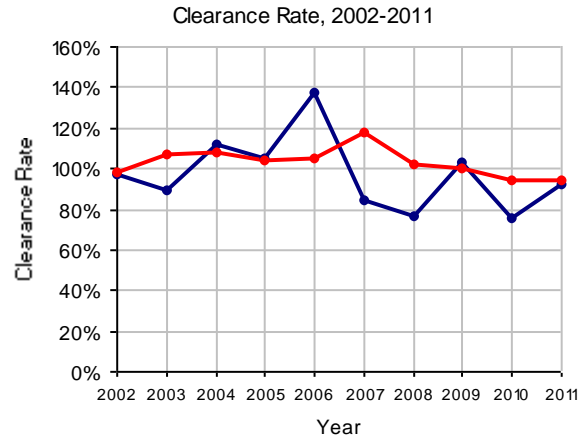
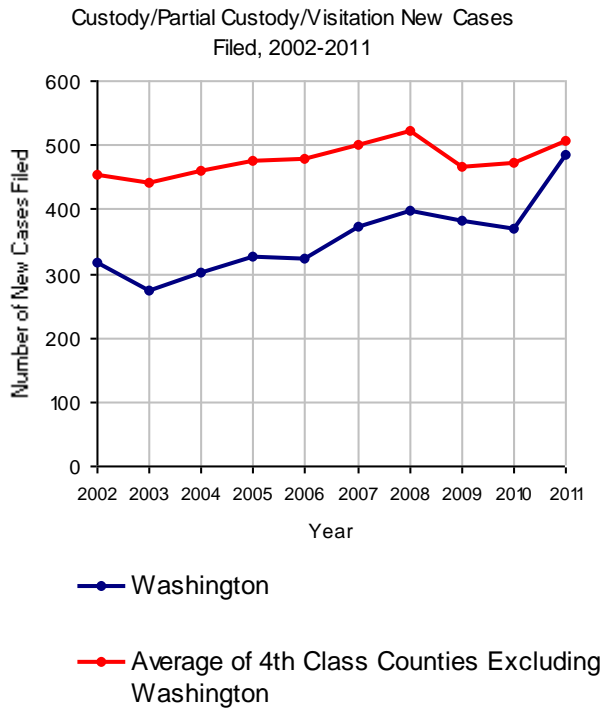
No. of Common Pleas Court Judgeships: 6



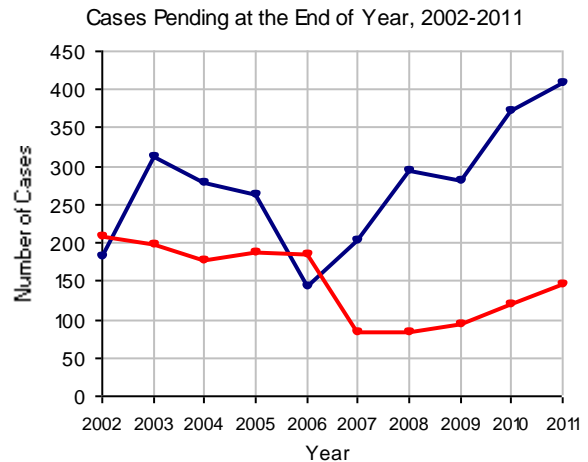
## 2011 Custody/Partial Custody/Visitation

No. of  
Petitions

Cases Pending 1/1/2011	371
New Cases Filed in 2011	484
<b>Cases Available for Processing</b>	<b>855</b>
Processed By:	
Judge	77 17.2%
Non-Judicial Officer	255 57.0%
Other	115 25.7%
<b>Cases Processed</b>	<b>447 100.0%</b>
<b>Cases Pending 12/31/2011</b>	<b>408</b>

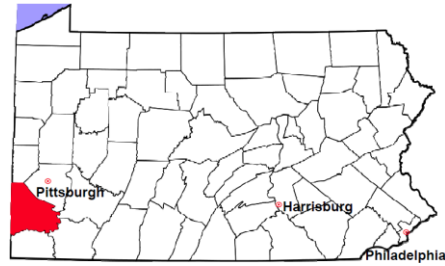


Note: Clearance Rate = Cases Processed / New Cases Filed



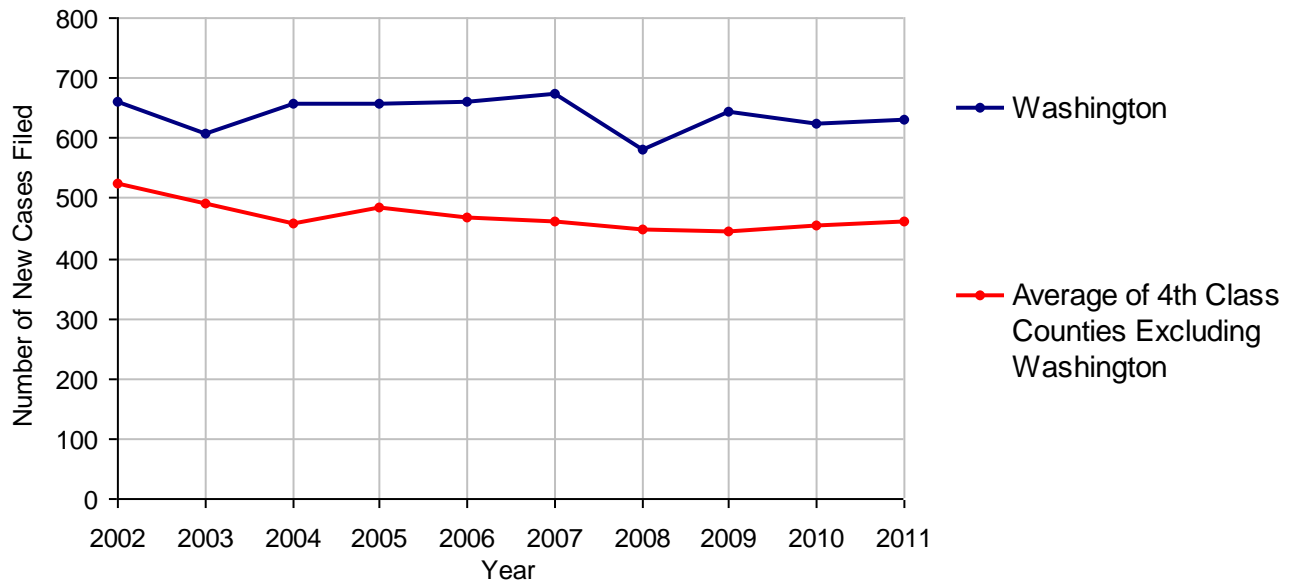
# Washington County

2011 Population Estimate: 208,282  
 Class of County: 4th  
 No. of Common Pleas Court Judgeships: 6



<b>2011 Divorce</b>	<b>No. of Petitions</b>	
Cases Pending 1/1/2011	802	
New Cases Filed in 2011	632	
<b>Cases Available for Processing</b>	<b>1,434</b>	
Processed By:		
Contested Before a Judge	6	1.1%
Contested Before a Master	80	15.1%
Uncontested	432	81.7%
Other	11	2.1%
<b>Cases Processed</b>	<b>529</b>	<b>100.0%</b>
<b>Cases Pending 12/31/2011</b>	<b>905</b>	

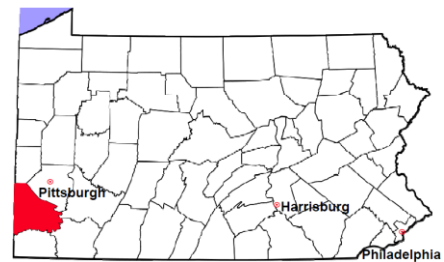
**Divorce New Cases Filed, 2002-2011**





# Washington County

2011 Population Estimate: 208,282  
 Class of County: 4th  
 No. of Common Pleas Court Judgeships: 6



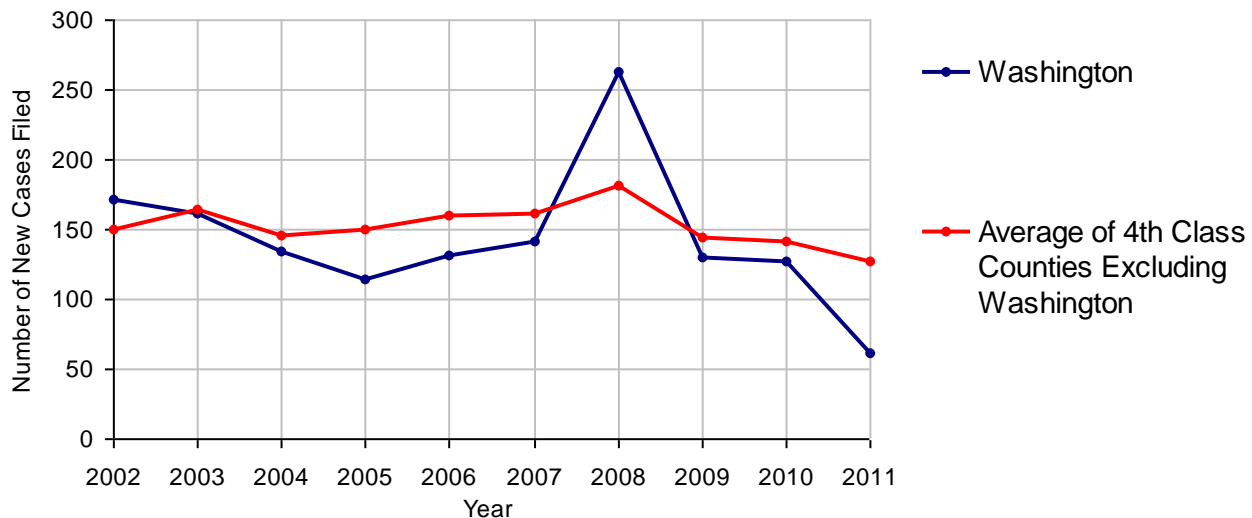
## 2011 Juvenile Dependency - Active Dependent Inventory



	Abuse/ Neglect	Status Offenses	Total
Cases Pending 1/1/2011	47	9	56
New Petitions Filed in 2011	57	5	62
Other	0	0	0
<b>Total Petitions Available for Processing</b>	<b>104</b>	<b>14</b>	<b>118</b>
Processed by:			
Adjudicated Dependent			
Judge	12	0	12
Master	21	0	21
Adjudicated NOT Dependent			
Judge	0	0	0
Master	0	0	0
Withdrawn/Dismissed/Inactive	0	0	0
Other	17	1	18
<b>Total Petitions Processed</b>	<b>50</b>	<b>1</b>	<b>51</b>
<b>Cases Pending 12/31/2011</b>	<b>54</b>	<b>13</b>	<b>67</b>

Data provided by CPCMS

**Abuse/Neglect and Status Offenses New Cases Filed, 2002-2011**



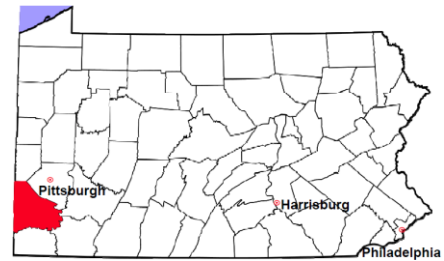
Note: (1) Dependency data for 2002-2010 were collected manually. Dependency data for 2011 were provided by CPCMS. (2) A departmental review of cases resulted in a higher rate of case acceptance in 2008.

# Washington County

2011 Population Estimate: 208,282

Class of County: 4th

No. of Common Pleas Court Judgeships: 6



## 2011 Juvenile Dependency - Adjudicated Dependent Inventory

	Abuse/ Neglect	Status Offenses	Total	
Cases Pending 1/1/2011	184	9	193	
New Adjudicated Dependent Cases	33	0	33	
Other	24	2	26	
<b>Total Adjudicated Dependent Cases</b>	<b>241</b>	<b>11</b>	<b>252</b>	
<b><u>Court Supervision Terminated:</u></b>				
Family Reunification	5	0	5	10.4%
Adoption	15	0	15	31.3%
Placement with a Relative/Guardian	3	0	3	6.3%
Aged Out	9	1	10	20.8%
Other Permanency Outcomes*	4	0	4	8.3%
Other**	10	1	11	22.9%
<b>Total Adjudicated Dependent Cases Terminated</b>	<b>46</b>	<b>2</b>	<b>48</b>	<b>100.0%</b>
<b>Cases Pending 12/31/2011</b>	<b>195</b>	<b>9</b>	<b>204</b>	

Data provided by CPCMS

\* Other Permanency Outcomes include: adjudicated delinquent, death due to natural causes, emancipation, permanent living arrangement, and parent has come forward.

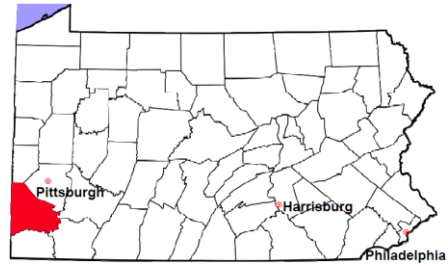
\*\* Other includes cases where Court Supervision is terminated due to transfer out of jurisdiction, withdrawal and administrative closures.

# Washington County

2011 Population Estimate: 208,282

Class of County: 4th

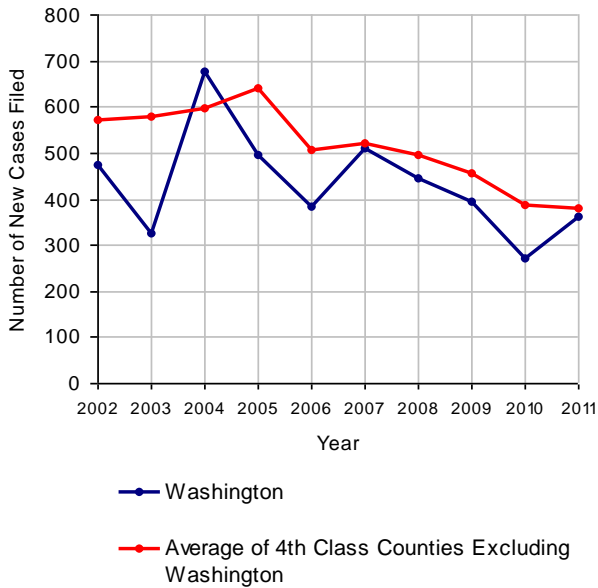
No. of Common Pleas Court Judgeships: 6



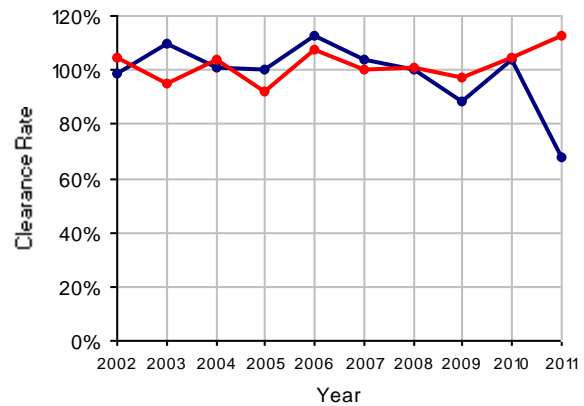
## 2011 Juvenile Delinquency

	No. of Cases
Cases Pending 1/1/2011	98
New Cases Filed in 2011	363
<b>Cases Available for Processing</b>	<b>461</b>
Processed By:	
Judge	64 26.0%
<b>Non-Judicial Officer</b>	<b>151 61.4%</b>
Other	31 12.6%
<b>Cases Processed</b>	<b>246 100.0%</b>
<b>Cases Pending 12/31/2011</b>	<b>215</b>

Juvenile Delinquency New Cases Filed, 2002-2011

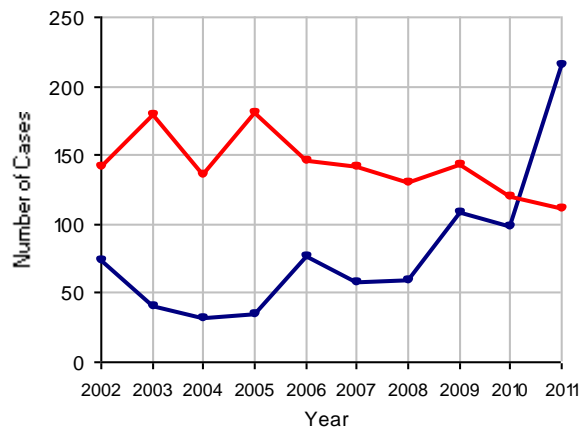


Clearance Rate, 2002-2011



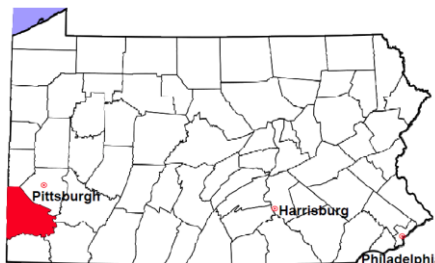
Note: Clearance Rate = Cases Processed / New Cases Filed

Cases Pending at the End of Year, 2002-2011



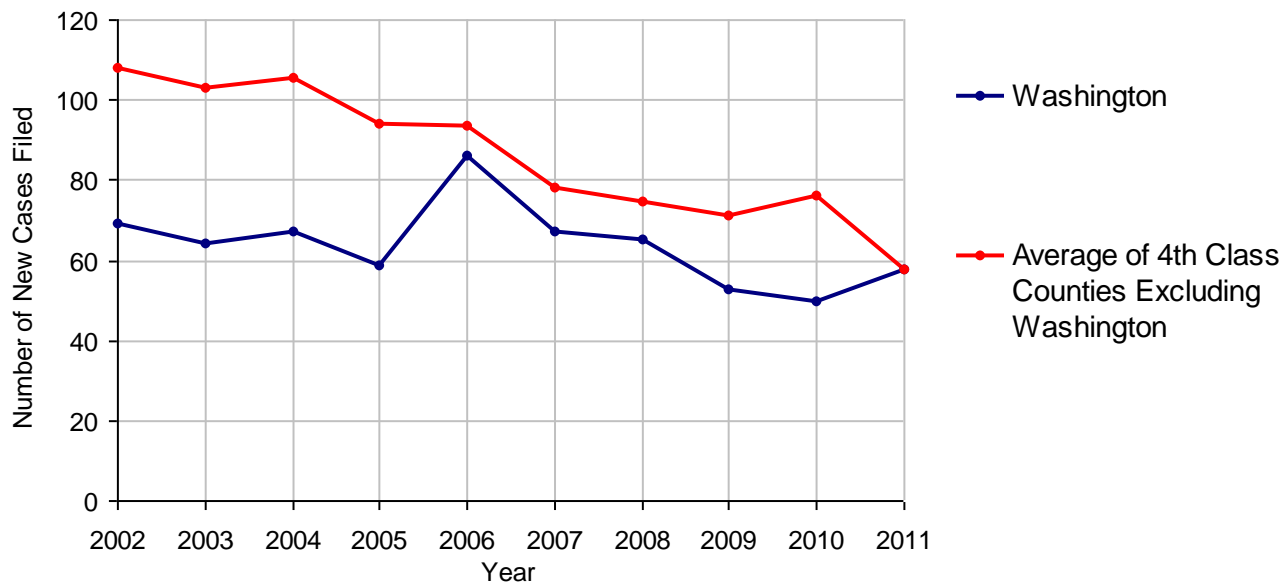
# Washington County

2011 Population Estimate: 208,282  
 Class of County: 4th  
 No. of Common Pleas Court Judgeships: 6



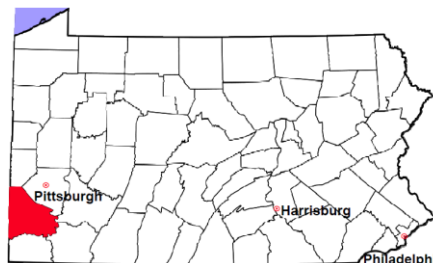
<b>2011 Accounts</b>	<b>No. of Cases</b>
Cases Pending 1/1/2011	61
New Cases Filed in 2011	58
<b>Cases Available for Processing</b>	<b>119</b>
Processed By:	
Contested before a Judge	4      7.5%
Contested before a Non-judicial Officer	0
Uncontested	37      69.8%
Other	12      22.6%
<b>Cases Processed</b>	<b>53      100.0%</b>
<b>Cases Pending 12/31/2011</b>	<b>66</b>

**Accounts New Cases Filed, 2002-2011**



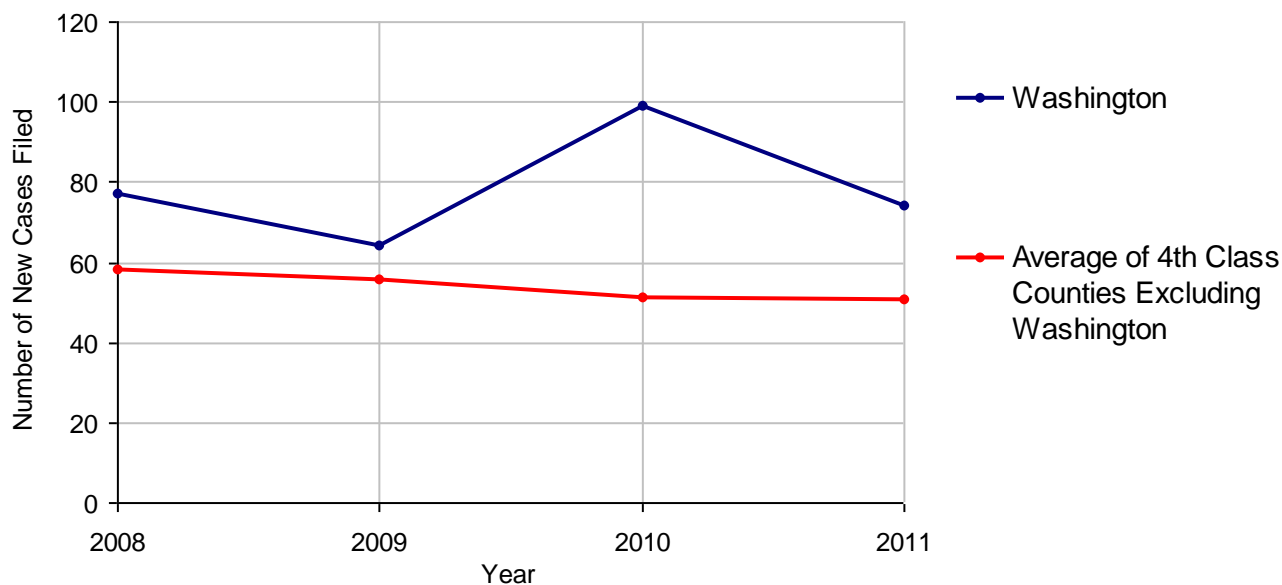
# Washington County

2011 Population Estimate: 208,282  
 Class of County: 4th  
 No. of Common Pleas Court Judgeships: 6



<b>2011 Adoptions</b>		<b>No. of Cases</b>	
Cases Pending 1/1/2011		6	
New Cases Filed in 2011		74	
<b>Cases Available for Processing</b>		<b>80</b>	
Processed By:			
Contested before a Judge	Granted	0	
	Denied	0	
Uncontested	Granted	72	97.3%
	Denied	0	
Other		2	2.7%
<b>Cases Processed</b>		<b>74</b>	<b>100.0%</b>
<b>Cases Pending 12/31/2011</b>		<b>6</b>	

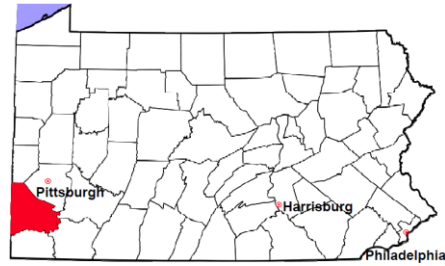
**Adoptions New Cases Filed, 2008-2011**



Note: Prior to 2008, each petition was counted as one new case, regardless of the number of children listed on the petition. Starting in 2008, each child listed on a petition is counted as a separate case. Therefore, statistics for the years since 2008 should not be compared to those for the years prior to 2008.

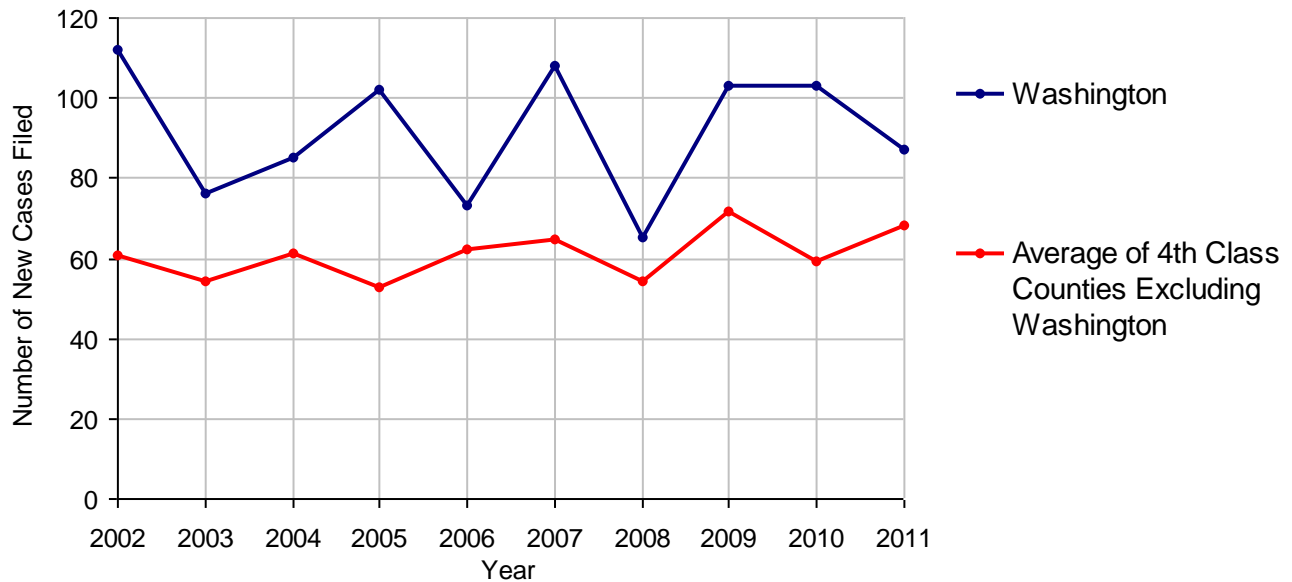
# Washington County

2011 Population Estimate: 208,282  
 Class of County: 4th  
 No. of Common Pleas Court Judgeships: 6



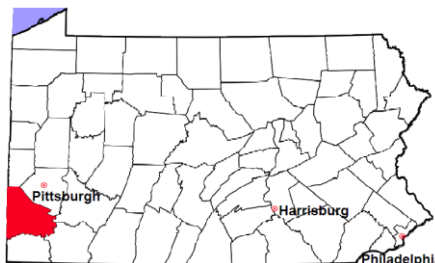
<b>2011 Relinquishments/Terminations</b>	<b>No. of Cases</b>
Cases Pending 1/1/2011	31
New Cases Filed in 2011	87
<b>Cases Available for Processing</b>	<b>118</b>
Processed By:	
Contested before a Judge	7      8.5%
Uncontested	70      85.4%
Other	5      6.1%
<b>Cases Processed</b>	<b>82      100.0%</b>
<b>Cases Pending 12/31/2011</b>	<b>36</b>

**Relinquishments/Terminations New Cases Filed, 2002-2011**



# Washington County

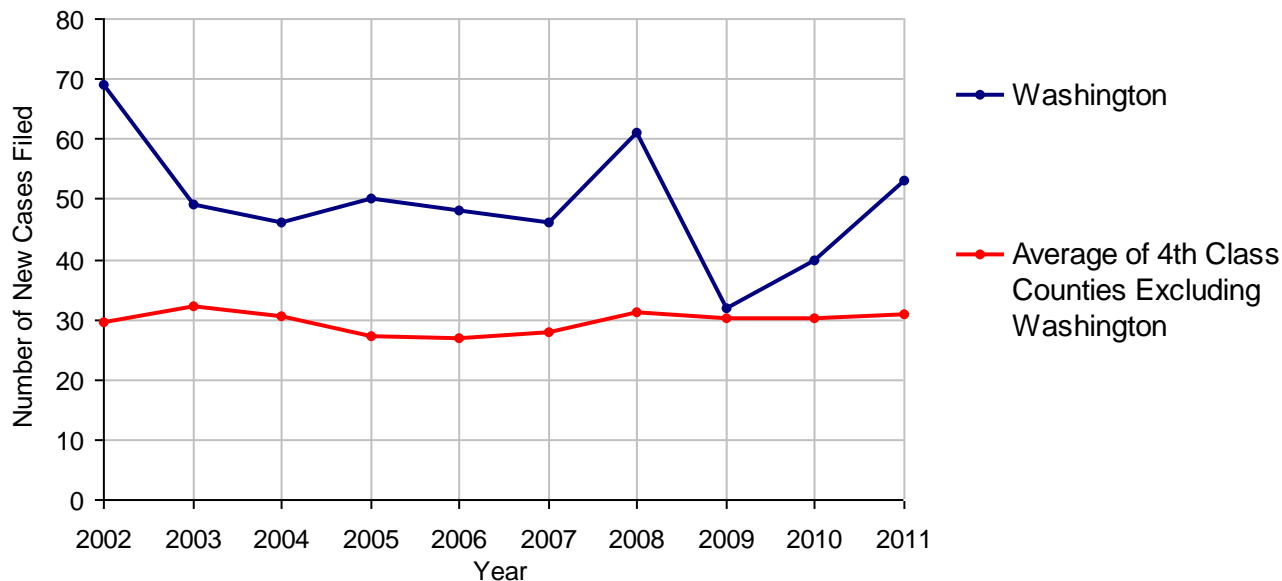
2011 Population Estimate: 208,282  
 Class of County: 4th  
 No. of Common Pleas Court Judgeships: 6



## 2011 Appointment of Guardians

	No. of Cases	
Cases Pending 1/1/2011	7	
New Cases Filed in 2011	53	
<b>Cases Available for Processing</b>	<b>60</b>	
Processed By:		
Contested before a Judge	0	
Uncontested	40	85.1%
Other	7	14.9%
<b>Cases Processed</b>	<b>47</b>	<b>100.0%</b>
<b>Cases Pending 12/31/2011</b>	<b>13</b>	

Appointment of Guardians New Cases Filed, 2002-2011

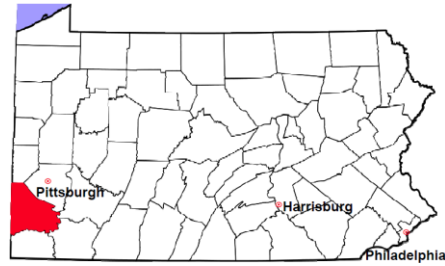


# Washington County

2011 Population Estimate: 208,282

Class of County: 4th

No. of Common Pleas Court Judgeships: 6



---

## 2011 Jury Activity and Performance Measures

---

A. Juror Days	1,040
B. Number Sent to Voir Dire	776
Voir Dire Attendance Rate (B/A * 100)	74.6%
C. Number of Jurors Selected	300
Juror Selection Rate (C/B * 100)	38.7%

---

Note: In mid-2011, AOPC began utilizing the National Center for State Courts' Jury Managers' Toolbox for collecting jury data. This has resulted in limited jury performance measures being reported for 2011. Additional data will be available in 2012.