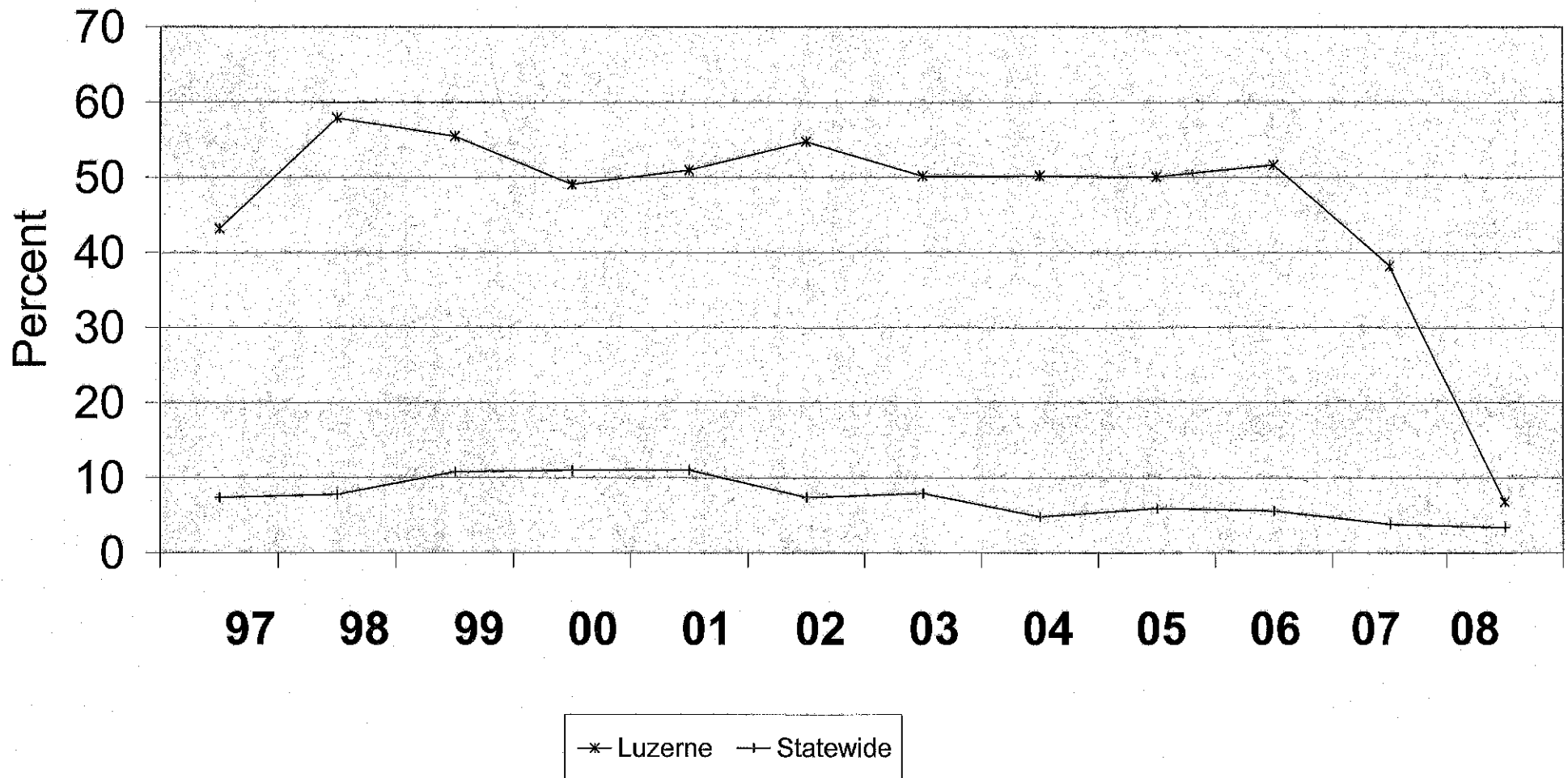


Percent of Formal Delinquency Proceedings Where Attorney Was Waived



	1997	1998	1999	2000	2001	2002	2003	2004	2005	2006	2007	2008
Luzerne	43.2	57.9	55.5	49.1	51.0	54.8	50.2	50.2	50.1	51.7	38.2	6.8
Statewide	7.4	7.8	10.8	11.0	11.0	7.4	7.9	4.8	5.9	5.6	3.8	3.4

Juvenile Delinquency Dispositions by Type of Attorney Representation in Delinquency Proceedings, 2008

	Total Dispositions	Number of Formal Delinquency Proceedings	% of Formal Proceedings to Total Dispositions	Public Defender	% of Formal Delinquency Proceedings	Court Appointed	% of Formal Delinquency Proceedings	Private Attorney	% of Formal Delinquency Proceedings	Waived	% of Formal Delinquency Proceedings
ADAMS	335	181	54.0%	119	65.7%	46	25.4%	12	6.6%	4	2.2%
ALLEGHENY	4591	3411	74.3%	2493	73.1%	655	19.2%	261	7.7%	2	0.1%
ARMSTRONG	194	79	40.7%	41	51.9%	31	39.2%	7	8.9%	0	0.0%
BEAVER	543	196	36.1%	148	75.5%	23	11.7%	25	12.8%	0	0.0%
BEDFORD	90	87	96.7%	76	87.4%	4	4.6%	6	6.9%	1	1.1%
BERKS	1607	780	48.5%	515	66.0%	208	26.7%	57	7.3%	0	0.0%
BLAIR	434	203	46.8%	96	47.3%	44	21.7%	14	6.9%	49	24.1%
BRADFORD	94	41	43.6%	27	65.9%	3	7.3%	11	26.8%	0	0.0%
BUCKS	1548	1118	72.2%	884	79.1%	69	6.2%	164	14.7%	1	0.1%
BUTLER	316	277	87.7%	226	81.6%	34	12.3%	17	6.1%	0	0.0%
CAMBRIA	500	384	76.8%	295	76.8%	55	14.3%	34	8.9%	0	0.0%
CAMERON	26	19	73.1%	19	100.0%	0	0.0%	0	0.0%	0	0.0%
CARBON	184	68	37.0%	48	70.6%	13	19.1%	7	10.3%	0	0.0%
CENTRE	202	195	96.5%	95	48.7%	47	24.1%	21	10.8%	32	16.4%
CHESTER	1041	673	64.6%	478	71.0%	0	0.0%	195	29.0%	0	0.0%
CLARION	138	109	79.0%	72	66.1%	25	22.9%	12	11.0%	0	0.0%
CLEARFIELD	73	60	82.2%	13	21.7%	0	0.0%	10	16.7%	37	61.7%
CLINTON	53	32	60.4%	30	93.8%	0	0.0%	2	6.3%	0	0.0%
COLUMBIA	220	74	33.6%	63	85.1%	0	0.0%	10	13.5%	1	1.4%
CRAWFORD	292	196	67.1%	117	59.7%	49	25.0%	10	5.1%	20	10.2%
CUMBERLAND	598	121	20.2%	93	76.9%	16	13.2%	12	9.9%	0	0.0%
DAUPHIN	1484	1189	80.1%	824	69.3%	7	0.6%	355	29.9%	3	0.3%
DELAWARE	2049	1891	92.3%	1128	59.7%	398	21.0%	129	6.8%	236	12.5%
ELK	76	50	65.8%	38	76.0%	8	16.0%	4	8.0%	0	0.0%
ERIE	971	617	63.5%	517	83.8%	62	10.0%	37	6.0%	1	0.2%
FAYETTE	371	69	18.6%	62	89.9%	0	0.0%	7	10.1%	0	0.0%
FOREST	48	44	91.7%	15	34.1%	19	43.2%	2	4.5%	8	18.2%
FRANKLIN	628	294	46.8%	2	0.7%	280	95.2%	12	4.1%	0	0.0%
FULTON	21	17	81.0%	4	23.5%	0	0.0%	7	41.2%	6	35.3%
GREENE	137	40	29.2%	36	90.0%	1	2.5%	2	5.0%	1	2.5%
HUNTINGDON	75	67	89.3%	49	73.1%	12	17.9%	5	7.5%	1	1.5%
INDIANA	150	38	25.3%	33	86.8%	0	0.0%	5	13.2%	0	0.0%
JEFFERSON	132	58	43.9%	52	89.7%	0	0.0%	6	10.3%	0	0.0%
JUNIATA	45	43	95.6%	32	74.4%	5	11.6%	5	11.6%	1	2.3%
LACKAWANNA	437	331	75.7%	203	61.3%	1	0.3%	81	24.5%	46	13.9%
LANCASTER	1501	781	52.0%	508	65.0%	185	23.7%	83	10.6%	5	0.6%

Juvenile Delinquency Dispositions by Type of Attorney Representation in Delinquency Proceedings, 2008

	Total Dispositions	Number of Formal Delinquency Proceedings	% of Formal Proceedings to Total Dispositions	Public Defender	% of Formal Delinquency Proceedings	Court Appointed	% of Formal Delinquency Proceedings	Private Attorney	% of Formal Delinquency Proceedings	Waived	% of Formal Delinquency Proceedings
LAWRENCE	366	69	18.9%	62	89.9%	4	5.8%	1	1.4%	2	2.9%
LEBANON	382	290	75.9%	224	77.2%	51	17.6%	15	5.2%	0	0.0%
LEHIGH	1257	792	63.0%	605	76.4%	46	5.8%	86	10.9%	55	6.9%
LUZERNE	921	518	56.2%	332	64.1%	22	4.2%	129	24.9%	35	6.8%
LYCOMING	587	332	56.6%	313	94.3%	7	2.1%	12	3.6%	0	0.0%
MCKEAN	113	94	83.2%	29	30.9%	0	0.0%	13	13.8%	52	55.3%
MERCER	292	205	70.2%	111	54.1%	63	30.7%	30	14.6%	1	0.5%
MIFFLIN	112	99	88.4%	90	90.9%	4	4.0%	5	5.1%	0	0.0%
MONROE	430	329	76.5%	228	69.3%	50	15.2%	51	15.5%	0	0.0%
MONTGOMERY	2338	1135	48.5%	944	83.2%	0	0.0%	190	16.7%	1	0.1%
MONTOUR	36	31	86.1%	28	90.3%	2	6.5%	1	3.2%	0	0.0%
NORTHAMPTON	938	512	54.6%	338	66.0%	95	18.6%	79	15.4%	0	0.0%
NORTHUMBERLAND	582	139	23.9%	25	18.0%	104	74.8%	10	7.2%	0	0.0%
PERRY	129	80	62.0%	53	66.3%	12	15.0%	8	10.0%	7	8.8%
PHILADELPHIA	8572	6462	75.4%	4070	63.0%	1809	28.0%	397	6.1%	186	2.9%
PIKE	126	116	92.1%	56	48.3%	0	0.0%	60	51.7%	0	0.0%
POTTER	42	42	100.0%	4	9.5%	35	83.3%	3	7.1%	0	0.0%
SCHUYLKILL	512	175	34.2%	109	62.3%	39	22.3%	27	15.4%	0	0.0%
SNYDER	134	84	62.7%	49	58.3%	6	7.1%	6	7.1%	23	27.4%
SOMERSET	123	62	50.4%	45	72.6%	6	9.7%	4	6.5%	7	11.3%
SULLIVAN	15	12	80.0%	11	91.7%	1	8.3%	0	0.0%	0	0.0%
SUSQUEHANNA	89	66	74.2%	47	71.2%	13	19.7%	6	9.1%	0	0.0%
TIOGA	137	76	55.5%	60	78.9%	0	0.0%	16	21.1%	0	0.0%
UNION	53	33	62.3%	17	51.5%	13	39.4%	3	9.1%	0	0.0%
VENANGO	150	89	59.3%	10	11.2%	72	80.9%	7	7.9%	0	0.0%
WARREN	135	69	51.1%	40	58.0%	15	21.7%	12	17.4%	2	2.9%
WASHINGTON	628	242	38.5%	153	63.2%	22	9.1%	67	27.7%	0	0.0%
WAYNE	101	73	72.3%	61	83.6%	0	0.0%	12	16.4%	0	0.0%
WESTMORELAND	1257	832	66.2%	524	63.0%	71	8.5%	138	16.6%	99	11.9%
WYOMING	78	59	75.6%	50	84.7%	2	3.4%	7	11.9%	0	0.0%
YORK	1915	637	33.3%	387	60.8%	178	27.9%	72	11.3%	0	0.0%
Total	43754	27587	63.1%	18526	67.2%	5042	18.3%	3094	11.2%	925	3.4%

Juvenile Delinquency Dispositions by Type of Attorney Representation in Delinquency Proceedings, 2007

	Total Dispositions	Number of Formal Delinquency Proceedings	% of Formal Proceedings to Total Dispositions	Public Defender	% of Formal Delinquency Proceedings	Court Appointed	% of Formal Delinquency Proceedings	Private Attorney	% of Formal Delinquency Proceedings	Waived	% of Formal Delinquency Proceedings	Unreported	% of Formal Delinquency Proceedings
Adams	419	217	51.8%	158	72.8%	39	18.0%	20	9.2%	0	0.0%	0	0.0%
Allegheny	4,692	3,477	74.1%	2,161	62.2%	711	20.4%	392	11.3%	213	6.1%	0	0.0%
Armstrong	236	87	36.9%	52	59.8%	24	27.6%	11	12.6%	0	0.0%	0	0.0%
Beaver	548	192	35.0%	147	76.6%	30	15.6%	15	7.8%	0	0.0%	0	0.0%
Bedford	74	74	100.0%	60	81.1%	5	6.8%	7	9.5%	2	2.7%	0	0.0%
Berks	1,828	916	50.1%	601	65.6%	244	26.6%	71	7.8%	0	0.0%	0	0.0%
Blair	516	242	46.9%	82	33.9%	41	16.9%	14	5.8%	105	43.4%	0	0.0%
Bradford	123	68	55.3%	57	83.8%	7	10.3%	4	5.9%	0	0.0%	0	0.0%
Bucks	1,790	1,229	68.7%	940	76.5%	93	7.6%	190	15.5%	6	0.5%	0	0.0%
Butler	364	330	90.7%	295	89.4%	13	3.9%	18	5.5%	4	1.2%	0	0.0%
Cambria	497	395	79.5%	315	79.7%	45	11.4%	34	8.6%	1	0.3%	0	0.0%
Cameron	12	7	58.3%	7	100.0%	0	0.0%	0	0.0%	0	0.0%	0	0.0%
Carbon	183	61	33.3%	41	67.2%	13	21.3%	7	11.5%	0	0.0%	0	0.0%
Centre	249	244	98.0%	128	52.5%	43	17.6%	39	16.0%	34	13.9%	0	0.0%
Chester	1,088	688	63.2%	488	70.9%	0	0.0%	200	29.1%	0	0.0%	0	0.0%
Clarion	86	55	64.0%	36	65.5%	16	29.1%	3	5.5%	0	0.0%	0	0.0%
Clearfield	133	91	68.4%	26	28.6%	0	0.0%	20	22.0%	45	49.5%	0	0.0%
Clinton	46	38	82.6%	36	94.7%	0	0.0%	2	5.3%	0	0.0%	0	0.0%
Columbia	286	89	31.1%	72	80.9%	7	7.9%	10	11.2%	0	0.0%	0	0.0%
Crawford	203	150	73.9%	83	55.3%	19	12.7%	14	9.3%	34	22.7%	0	0.0%
Cumberland	644	171	26.6%	120	70.2%	38	22.2%	13	7.6%	0	0.0%	0	0.0%
Dauphin	1,548	1,239	80.0%	972	78.5%	8	0.6%	258	20.8%	1	0.1%	0	0.0%
Delaware	1,631	1,625	99.6%	984	60.6%	28	1.7%	568	35.0%	42	2.6%	3	0.2%
Elk	82	43	52.4%	29	67.4%	10	23.3%	4	9.3%	0	0.0%	0	0.0%
Erie	1,061	683	64.4%	524	76.7%	115	16.8%	42	6.1%	2	0.3%	0	0.0%
Fayette	383	76	19.8%	69	90.8%	0	0.0%	7	9.2%	0	0.0%	0	0.0%
Forest	25	13	52.0%	9	69.2%	1	7.7%	0	0.0%	3	23.1%	0	0.0%
Franklin	636	287	45.1%	0	0.0%	285	99.3%	2	0.7%	0	0.0%	0	0.0%
Fulton	31	23	74.2%	9	39.1%	6	26.1%	3	13.0%	5	21.7%	0	0.0%
Greene	177	35	19.8%	24	68.6%	4	11.4%	4	11.4%	3	8.6%	0	0.0%
Huntingdon	87	83	95.4%	71	85.5%	3	3.6%	9	10.8%	0	0.0%	0	0.0%
Indiana	179	44	24.6%	34	77.3%	0	0.0%	10	22.7%	0	0.0%	0	0.0%
Jefferson	178	56	31.5%	49	87.5%	1	1.8%	6	10.7%	0	0.0%	0	0.0%
Juniata	53	53	100.0%	37	69.8%	6	11.3%	1	1.9%	9	17.0%	0	0.0%
Lackawanna	425	378	88.9%	187	49.5%	1	0.3%	90	23.8%	100	26.5%	0	0.0%
Lancaster	1,494	766	51.3%	496	64.8%	138	18.0%	125	16.3%	7	0.9%	0	0.0%

	Number of		% of Formal	% of		% of		% of		% of		% of	
	Total Dispositions	Formal Delinquency Proceedings	Proceedings to Total Dispositions	Public Defender	Formal Delinquency Proceedings	Court Appointed	Formal Delinquency Proceedings	Private Attorney	Formal Delinquency Proceedings	Waived	Formal Delinquency Proceedings	Unreported	Formal Delinquency Proceedings
Lawrence	382	69	18.1%	51	73.9%	11	15.9%	6	8.7%	1	1.4%	0	0.0%
Lebanon	402	299	74.4%	229	76.6%	56	18.7%	14	4.7%	0	0.0%	0	0.0%
Lehigh	1,521	873	57.4%	662	75.8%	1	0.1%	131	15.0%	79	9.0%	0	0.0%
Luzerne	1,066	498	46.7%	187	37.6%	26	5.2%	95	19.1%	190	38.2%	0	0.0%
Lycoming	567	371	65.4%	331	89.2%	20	5.4%	20	5.4%	0	0.0%	0	0.0%
McKean	105	72	68.6%	23	31.9%	0	0.0%	6	8.3%	43	59.7%	0	0.0%
Mercer	303	220	72.6%	144	65.5%	45	20.5%	31	14.1%	0	0.0%	0	0.0%
Mifflin	85	63	74.1%	57	90.5%	3	4.8%	3	4.8%	0	0.0%	0	0.0%
Monroe	481	356	74.0%	235	66.0%	81	22.8%	40	11.2%	0	0.0%	0	0.0%
Montgomery	2,294	1,147	50.0%	972	84.7%	0	0.0%	174	15.2%	0	0.0%	1	0.1%
Montour	55	43	78.2%	26	60.5%	7	16.3%	10	23.3%	0	0.0%	0	0.0%
Northampton	1089	582	53.4%	408	70.1%	107	18.4%	64	11.0%	3	0.5%	0	0.0%
Northumberland	502	135	26.9%	24	17.8%	103	76.3%	8	5.9%	0	0.0%	0	0.0%
Perry	136	78	57.4%	47	60.3%	13	16.7%	10	12.8%	8	10.3%	0	0.0%
Philadelphia	8,796	6,302	71.6%	4,292	68.1%	27	0.4%	1983	31.5%	0	0.0%	0	0.0%
Pike	136	118	86.8%	75	63.6%	0	0.0%	43	36.4%	0	0.0%	0	0.0%
Potter	72	69	95.8%	13	18.8%	48	69.6%	8	11.6%	0	0.0%	0	0.0%
Schuylkill	443	104	23.5%	64	61.5%	19	18.3%	21	20.2%	0	0.0%	0	0.0%
Snyder	174	102	58.6%	66	64.7%	12	11.8%	13	12.7%	11	10.8%	0	0.0%
Somerset	178	94	52.8%	70	74.5%	2	2.1%	14	14.9%	8	8.5%	0	0.0%
Sullivan	16	13	81.3%	10	76.9%	2	15.4%	1	7.7%	0	0.0%	0	0.0%
Susquehanna	80	56	70.0%	39	69.6%	10	17.9%	7	12.5%	0	0.0%	0	0.0%
Tioga	103	60	58.3%	55	91.7%	0	0.0%	5	8.3%	0	0.0%	0	0.0%
Union	48	32	66.7%	21	65.6%	10	31.3%	1	3.1%	0	0.0%	0	0.0%
Venango	181	120	66.3%	21	17.5%	87	72.5%	8	6.7%	4	3.3%	0	0.0%
Warren	144	57	39.6%	27	47.4%	11	19.3%	17	29.8%	2	3.5%	0	0.0%
Washington	911	325	35.7%	183	56.3%	34	10.5%	106	32.6%	0	0.0%	2	0.6%
Wayne	80	49	61.3%	32	65.3%	0	0.0%	17	34.7%	0	0.0%	0	0.0%
Westmoreland	1219	726	59.6%	473	65.2%	64	8.8%	85	11.7%	103	14.2%	1	0.1%
Wyoming	116	88	75.9%	76	86.4%	2	2.3%	8	9.1%	2	2.3%	0	0.0%
York	1,881	546	29.0%	371	67.9%	113	20.7%	62	11.4%	0	0.0%	0	0.0%
TOTALS	45,573	27,892	61.2%	18,683	67.0%	2,908	10.4%	5,224	18.7%	1,070	3.8%	7	0.0%

Juvenile Delinquency Dispositions by Type of Attorney Representation in Delinquency Proceedings, 2000

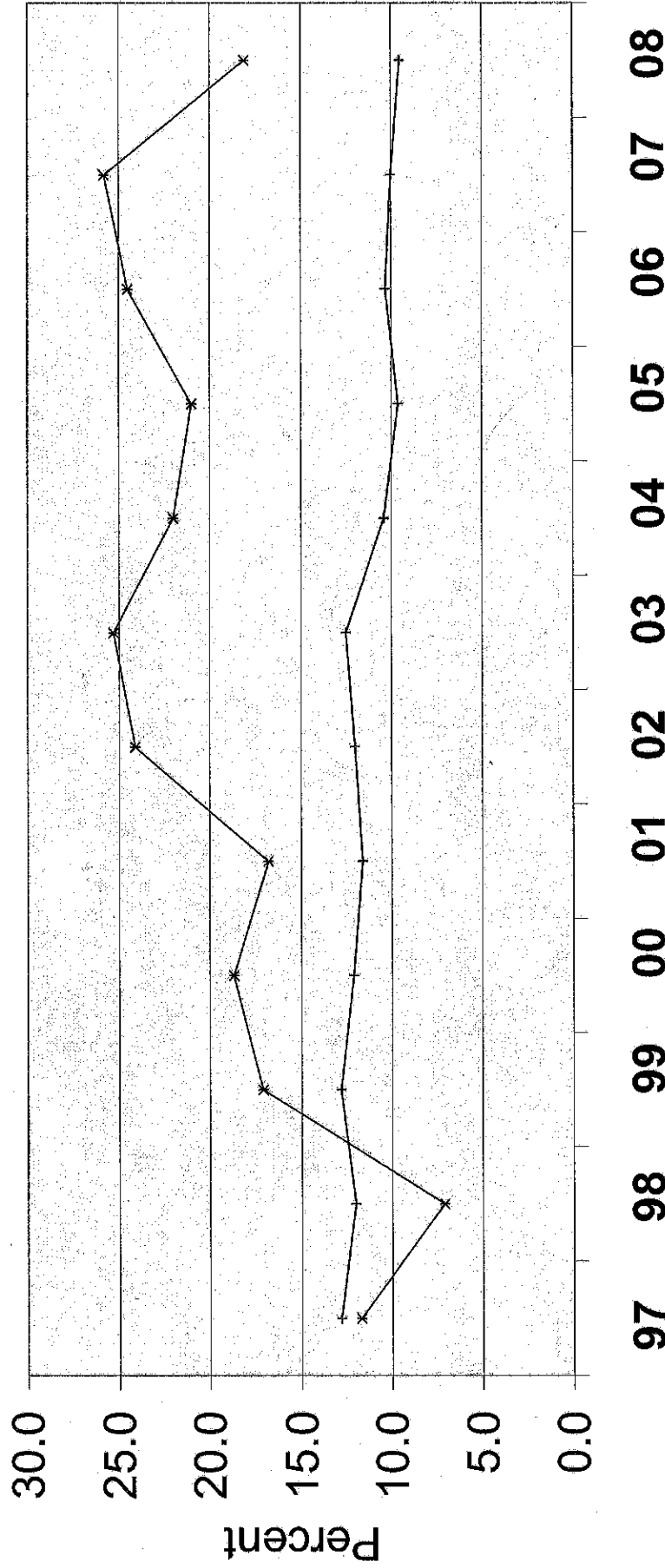
	Total Dispositions	Number of Formal Delinquency Proceedings	% of Formal Proceedings to Total Dispositions	Public Defender	% of Formal Delinquency Proceedings	Court Appointed	% of Formal Delinquency Proceedings	Private Attorney	% of Formal Delinquency Proceedings	Waived	% of Formal Delinquency Proceedings	Unreported	% of Formal Delinquency Proceedings
Adams	446	209	46.9%	142	67.9%	50	23.9%	17	8.1%	0	0.0%	0	0.0%
Allegheny	3,981	3,044	76.5%	1,641	53.9%	565	18.6%	350	11.5%	488	16.0%	0	0.0%
Armstrong	294	107	36.4%	69	64.5%	16	15.0%	22	20.6%	0	0.0%	0	0.0%
Beaver	607	162	26.7%	135	83.3%	10	6.2%	17	10.5%	0	0.0%	0	0.0%
Bedford	50	46	92.0%	31	67.4%	4	8.7%	6	13.0%	5	10.9%	0	0.0%
Berks	1,095	777	71.0%	636	81.9%	30	3.9%	111	14.3%	0	0.0%	0	0.0%
Blair	477	274	57.4%	92	33.6%	27	9.9%	42	15.3%	113	41.2%	0	0.0%
Bradford	111	61	55.0%	39	63.9%	12	19.7%	10	16.4%	0	0.0%	0	0.0%
Bucks	1,659	1,127	67.9%	252	22.4%	36	3.2%	824	73.1%	15	1.3%	0	0.0%
Butler	347	301	86.7%	262	87.0%	3	1.0%	36	12.0%	0	0.0%	0	0.0%
Cambria	640	529	82.7%	422	79.8%	58	11.0%	49	9.3%	0	0.0%	0	0.0%
Cameron	22	10	45.5%	4	40.0%	2	20.0%	3	30.0%	1	10.0%	0	0.0%
Carbon	173	64	37.0%	42	65.6%	18	28.1%	4	6.3%	0	0.0%	0	0.0%
Centre	190	189	99.5%	96	50.8%	25	13.2%	37	19.6%	31	16.4%	0	0.0%
Chester	912	417	45.7%	223	53.5%	32	7.7%	43	10.3%	119	28.5%	0	0.0%
Clarion	94	67	71.3%	48	71.6%	11	16.4%	8	11.9%	0	0.0%	0	0.0%
Clearfield	328	114	34.8%	91	79.8%	2	1.8%	6	5.3%	15	13.2%	0	0.0%
Clinton	114	72	63.2%	70	97.2%	1	1.4%	1	1.4%	0	0.0%	0	0.0%
Columbia	188	74	39.4%	12	16.2%	62	83.8%	0	0.0%	0	0.0%	0	0.0%
Crawford	270	197	73.0%	60	30.5%	6	3.0%	15	7.6%	116	58.9%	0	0.0%
Cumberland	568	126	22.2%	93	73.8%	20	15.9%	13	10.3%	0	0.0%	0	0.0%
Dauphin	1,577	1,259	79.8%	894	71.0%	1	0.1%	173	13.7%	191	15.2%	0	0.0%
Delaware	1,524	1,512	99.2%	7	0.5%	0	0.0%	64	4.2%	1441	95.3%	0	0.0%
Elk	72	37	51.4%	25	67.6%	6	16.2%	5	13.5%	1	2.7%	0	0.0%
Erie	1,158	695	60.0%	537	77.3%	131	18.8%	26	3.7%	1	0.1%	0	0.0%
Fayette	526	80	15.2%	71	88.8%	5	6.3%	4	5.0%	0	0.0%	0	0.0%
Forest	29	28	96.6%	17	60.7%	9	32.1%	1	3.6%	1	3.6%	0	0.0%
Franklin	505	137	27.1%	127	92.7%	4	2.9%	3	2.2%	3	2.2%	0	0.0%
Fulton	26	20	76.9%	0	0.0%	4	20.0%	2	10.0%	14	70.0%	0	0.0%
Greene	52	16	30.8%	10	62.5%	3	18.8%	3	18.8%	0	0.0%	0	0.0%
Huntingdon	96	66	68.8%	38	57.6%	22	33.3%	1	1.5%	5	7.6%	0	0.0%
Indiana	244	87	35.7%	79	90.8%	4	4.6%	4	4.6%	0	0.0%	0	0.0%
Jefferson	147	51	34.7%	47	92.2%	2	3.9%	2	3.9%	0	0.0%	0	0.0%
Juniata	62	53	85.5%	32	60.4%	13	24.5%	7	13.2%	1	1.9%	0	0.0%
Lackawanna	501	359	71.7%	84	23.4%	92	25.6%	80	22.3%	103	28.7%	0	0.0%
Lancaster	1,553	902	58.1%	580	64.3%	177	19.6%	120	13.3%	25	2.8%	0	0.0%

Juvenile Delinquency Dispositions by Type of Attorney Representation in Delinquency Proceedings, 2000

	Total Dispositions	Number of Formal Delinquency Proceedings	% of Formal Proceedings to Total Dispositions	Public Defender	% of Formal Delinquency Proceedings	Court Appointed	% of Formal Delinquency Proceedings	Private Attorney	% of Formal Delinquency Proceedings	Waived	% of Formal Delinquency Proceedings	Unreported	% of Formal Delinquency Proceedings
Lawrence	193	88	45.6%	70	79.5%	0	0.0%	18	20.5%	0	0.0%	0	0.0%
Lebanon	366	180	49.2%	142	78.9%	19	10.6%	18	10.0%	1	0.6%	0	0.0%
Lehigh	1,104	1,052	95.3%	859	81.7%	29	2.8%	78	7.4%	62	5.9%	24	2.3%
Luzerne	999	527	52.8%	113	21.4%	0	0.0%	155	29.4%	259	49.1%	0	0.0%
Lycoming	638	410	64.3%	390	95.1%	8	2.0%	11	2.7%	1	0.2%	0	0.0%
McKean	109	96	88.1%	88	91.7%	0	0.0%	3	3.1%	5	5.2%	0	0.0%
Mercer	271	128	47.2%	97	75.8%	29	22.7%	2	1.6%	0	0.0%	0	0.0%
Mifflin	30	30	100.0%	11	36.7%	15	50.0%	4	13.3%	0	0.0%	0	0.0%
Monroe	383	291	76.0%	248	85.2%	9	3.1%	34	11.7%	0	0.0%	0	0.0%
Montgomery	1,995	1,024	51.3%	1,024	100.0%	0	0.0%	0	0.0%	0	0.0%	0	0.0%
Montour	52	39	75.0%	35	89.7%	0	0.0%	4	10.3%	0	0.0%	0	0.0%
Northampton	725	423	58.3%	353	83.5%	19	4.5%	51	12.1%	0	0.0%	0	0.0%
Northumberland	674	151	22.4%	66	43.7%	69	45.7%	16	10.6%	0	0.0%	0	0.0%
Perry	105	64	61.0%	19	29.7%	13	20.3%	16	25.0%	16	25.0%	0	0.0%
Philadelphia	8,737	8,736	100.0%	5,725	65.5%	1,929	22.1%	1081	12.4%	1	0.0%	0	0.0%
Pike	114	109	95.6%	41	37.6%	2	1.8%	66	60.6%	0	0.0%	0	0.0%
Potter	52	49	94.2%	33	67.3%	15	30.6%	1	2.0%	0	0.0%	0	0.0%
Schuylkill	376	119	31.6%	79	66.4%	13	10.9%	22	18.5%	5	4.2%	0	0.0%
Snyder	110	57	51.8%	30	52.6%	25	43.9%	2	3.5%	0	0.0%	0	0.0%
Somerset	172	99	57.6%	82	82.8%	9	9.1%	8	8.1%	0	0.0%	0	0.0%
Sullivan	17	12	70.6%	7	58.3%	1	8.3%	2	16.7%	2	16.7%	0	0.0%
Susquehanna	102	56	54.9%	43	76.8%	5	8.9%	8	14.3%	0	0.0%	0	0.0%
Tioga	132	48	36.4%	43	89.6%	0	0.0%	5	10.4%	0	0.0%	0	0.0%
Union	55	44	80.0%	43	97.7%	0	0.0%	1	2.3%	0	0.0%	0	0.0%
Venango	97	95	97.9%	2	2.1%	91	95.8%	2	2.1%	0	0.0%	0	0.0%
Warren	141	71	50.4%	49	69.0%	8	11.3%	6	8.5%	8	11.3%	0	0.0%
Washington	455	291	64.0%	178	61.2%	8	2.7%	105	36.1%	0	0.0%	0	0.0%
Wayne	63	57	90.5%	23	40.4%	22	38.6%	11	19.3%	1	1.8%	0	0.0%
Westmoreland	861	861	100.0%	526	61.1%	90	10.5%	98	11.4%	147	17.1%	0	0.0%
Wyoming	154	127	82.5%	83	65.4%	12	9.4%	31	24.4%	1	0.8%	0	0.0%
York	1,979	558	28.2%	411	73.7%	75	13.4%	72	12.9%	0	0.0%	0	0.0%
TOTALS	41,899	29,161	69.6%	17,921	61.5%	3,978	13.6%	4,040	13.9%	3,198	11.0%	24	0.1%

Percent of Dispositions Resulting in Placement

(including disposition reviews)



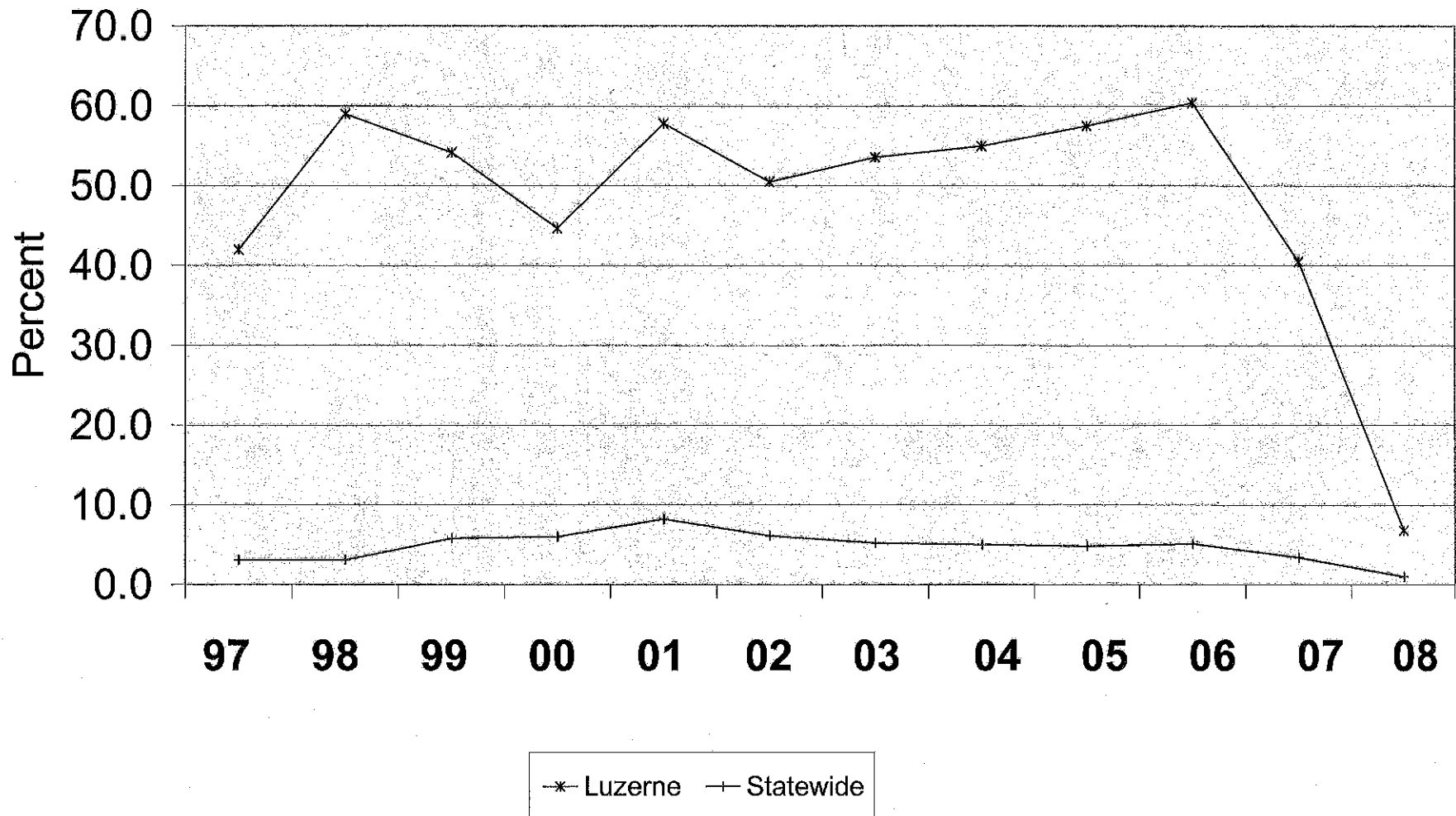
*- Luzerne + Statewide

	1997	1998	1999	2000	2001	2002	2003	2004	2005	2006	2007	2008
Luzerne	11.7	7.1	17.1	18.7	16.8	24.1	25.3	22.0	21.0	24.5	25.8	18.1
Statewide	12.8	12.0	12.8	12.1	11.6	12.0	12.5	10.4	9.6	10.3	10.0	9.5

Luzerne County compared to Statewide Totals 1997 through 2008												
Year of Disposition	Total			% of Placements to Total of New Allegations	Total Disposition Reviews	Total			% of Placements to Total of Disposition Reviews	Total Dispositions with reviews	Total Placements with reviews	% of Placements to Total Dispositions
	Dispositions New Allegations	Placements New Allegations	% of Placements to Total of New Allegations			Placements from Disposition Reviews	Dispositions with reviews	Placements with reviews				
2008	921	148	16.1%	248	64	25.8%	1,169	212	18.1%			
2007	1,066	219	20.5%	149	94	63.1%	1,215	313	25.8%			
2006	1,101	217	19.7%	114	81	71.1%	1,215	298	24.5%			
2005	1,241	219	17.6%	85	59	69.4%	1,326	278	21.0%			
2004	1,369	240	17.5%	124	89	71.8%	1,493	329	22.0%			
2003	1,499	330	22.0%	93	73	78.5%	1,592	403	25.3%			
2002	1,484	313	21.1%	86	66	76.7%	1,570	379	24.1%			
2001	1,017	135	13.3%	78	49	62.8%	1,095	184	16.8%			
2000	999	152	15.2%	79	50	63.3%	1,078	202	18.7%			
1999	1,396	192	13.8%	202	81	40.1%	1,598	273	17.1%			
1998	1,476	83	5.6%	199	36	18.1%	1,675	119	7.1%			
1997	1,047	88	8.4%	105	47	44.8%	1,152	135	11.7%			
Statewide												
2008	43,754	3,320	7.6%	34,222	4,124	12.1%	77,976	7,444	9.5%			
2007	45,410	3,500	7.7%	30,543	4,071	13.3%	75,953	7,571	10.0%			
2006	43,939	3,678	8.4%	28,138	3,743	13.3%	72,077	7,421	10.3%			
2005	45,504	3,487	7.7%	27,747	3,557	12.8%	73,251	7,044	9.6%			
2004	43,533	3,471	8.0%	23,610	3,541	15.0%	67,143	7,012	10.4%			
2003**	41,036	5,701	13.9%	18,414	1,707	9.3%	59,450	7,408	12.5%			
2002	39,333	4,099	10.4%	10,322	1,872	18.1%	49,655	5,971	12.0%			
2001	42,486	4,296	10.1%	9,342	1,734	18.6%	51,828	6,030	11.6%			
2000	41,899	4,384	10.5%	8,458	1,726	20.4%	50,357	6,110	12.1%			
1999	40,824	4,487	11.0%	8,527	1,838	21.6%	49,351	6,325	12.8%			
1998	39,769	4,147	10.4%	8,723	1,677	19.2%	48,492	5,824	12.0%			
1997	36,593	3,964	10.8%	6,632	1,588	23.9%	43,225	5,552	12.8%			
** Note on Philadelphia County data												

Luzerne County compared to Statewide Totals									
1997 through 2008									
Luzerne County									
Total									
Year of Disposition	Total Dispositions New Allegations	Total Placements New Allegations	% of Placements to Total of New Allegations	Total Disposition Reviews	Placements from Disposition Reviews	% of Placements to Total of Disposition Reviews	Total Dispositions with reviews	Total Placements with reviews	% of Placements to Total Dispositions
2008	921	148	16.1%	248	64	25.8%	1,169	212	18.1%
2007	1,066	219	20.5%	149	94	63.1%	1,215	313	25.8%
2006	1,101	217	19.7%	114	81	71.1%	1,215	298	24.5%
2005	1,241	219	17.6%	85	59	69.4%	1,326	278	21.0%
2004	1,369	240	17.5%	124	89	71.8%	1,493	329	22.0%
2003	1,499	330	22.0%	93	73	78.5%	1,592	403	25.3%
2002	1,484	313	21.1%	86	66	76.7%	1,570	379	24.1%
2001	1,017	135	13.3%	78	49	62.8%	1,095	184	16.8%
2000	999	152	15.2%	79	50	63.3%	1,078	202	18.7%
1999	1,396	192	13.8%	202	81	40.1%	1,598	273	17.1%
1998	1,476	83	5.6%	199	36	18.1%	1,675	119	7.1%
1997	1,047	88	8.4%	105	47	44.8%	1,152	135	11.7%
Other Class 3 Counties									
Total									
Year of Disposition	Total Dispositions New Allegations	Total Placements New Allegations	% of Placements to Total of New Allegations	Total Disposition Reviews	Placements from Disposition Reviews	% of Placements to Total of Disposition Reviews	Total Dispositions with reviews	Total Placements with reviews	% of Placements to Total Dispositions
2008	12,408	1,219	9.8%	2,963	737	24.9%	15,371	1,956	12.7%
2007	13,067	1,244	9.5%	2,855	690	24.2%	15,922	1,934	12.1%
2006	12,175	1,145	9.4%	3,128	776	24.8%	15,303	1,921	12.6%
2005	13,027	1,127	8.7%	2,499	755	30.2%	15,526	1,882	12.1%
2004	11,981	1,120	9.3%	2,404	820	34.1%	14,385	1,940	13.5%
2003	10,592	1,205	11.4%	1,624	650	40.0%	12,216	1,855	15.2%
2002	10,726	1,228	11.4%	1,545	685	44.3%	12,271	1,913	15.6%
2001	10,632	1,210	11.4%	1,416	692	48.9%	12,048	1,902	15.8%
2000	11,465	1,279	11.2%	1,466	671	45.8%	12,931	1,950	15.1%
1999	10,812	1,138	10.5%	1,522	674	44.3%	12,334	1,812	14.7%
1998	10,111	1,151	11.4%	1,025	524	51.1%	11,136	1,675	15.0%
1997	8,708	984	11.3%	828	388	46.9%	9,536	1,372	14.4%
Class 3 counties are:									
Berks	Chester	Dauphin	Erie	Lackawanna	Lancaster	Lehigh	Northampton	Westmoreland	York
Luzerne-not included in this total									

Percent of Placements With Waived Attorney



	1997	1998	1999	2000	2001	2002	2003	2004	2005	2006	2007	2008
Luzerne	42.0	59.0	54.2	44.7	57.8	50.5	53.6	55.0	57.5	60.4	40.5	6.8
Statewide	3.1	3.1	5.8	6.0	8.2	6.1	5.2	5.0	4.8	5.1	3.4	1.0

Attorney Representation Waived in Delinquency Proceedings
2008

	Trans. to Other Juv. Ct.	Complaint Withdrawn	Warned, Case Closed	Inf. Adjust.	Fines/ Costs	Dismissed Not Substan.	Ref. To Other Agency/Ind.	Consent Decree	Probation	Cont. on Prev. Dispo.	Trans.to Crim.Court	Other Dispo.	Placement	Prob. w/ Day Treat.	Total
ADAMS	1	0	0	0	0	0	0	1	2	0	0	0	0	0	4
ALLEGHENY	0	0	0	0	0	0	0	1	0	0	0	1	0	0	2
BEDFORD	0	0	0	0	0	0	0	0	1	0	0	0	0	0	1
BLAIR	3	2	0	1	2	12	0	26	2	1	0	0	0	0	49
BUCKS	0	0	0	0	0	1	0	0	0	0	0	0	0	0	1
CENTRE	2	1	0	0	0	0	0	19	8	1	0	0	0	1	32
CLEARFIELD	14	0	0	0	0	0	0	2	16	0	0	3	2	0	37
COLUMBIA	0	0	0	0	0	0	0	0	1	0	0	0	0	0	1
CRAWFORD	5	1	0	1	0	0	0	5	7	1	0	0	0	0	20
DAUPHIN	0	1	0	1	1	0	0	0	0	0	0	0	0	0	3
DELAWARE	9	13	12	0	2	3	0	46	82	1	0	57	11	0	236
ERIE	0	0	0	0	0	0	0	0	0	0	0	1	0	0	1
FOREST	0	0	0	0	0	0	0	8	0	0	0	0	0	0	8
FULTON	0	0	0	0	0	0	0	2	4	0	0	0	0	0	6
GREENE	1	0	0	0	0	0	0	0	0	0	0	0	0	0	1
HUNTINGDON	0	0	0	1	0	0	0	0	0	0	0	0	0	0	1
JUNIATA	0	0	0	1	0	0	0	0	0	0	0	0	0	0	1
LACKAWANNA	1	0	0	1	0	1	1	4	4	6	0	28	0	0	46
LANCASTER	1	0	0	0	0	0	0	1	3	0	0	0	0	0	5
LAWRENCE	0	0	0	0	0	1	0	0	1	0	0	0	0	0	2
LEHIGH	3	2	2	0	1	2	0	0	37	6	0	2	0	0	55
LUZERNE	5	0	0	0	0	1	0	5	13	0	0	1	10	0	35
MCKEAN	3	0	0	0	0	0	0	32	15	0	0	1	1	0	52
MERCER	0	0	0	0	0	0	0	0	0	0	0	1	0	0	1
MONTGOMERY	0	0	0	0	0	0	0	0	0	0	0	0	1	0	1
PERRY	1	0	0	0	2	0	0	2	2	0	0	0	0	0	7
PHILADELPHIA	1	32	14	0	0	20	0	73	17	5	2	15	7	0	186
SNYDER	0	0	0	0	1	0	0	0	0	0	0	22	0	0	23
SOMERSET	1	5	1	0	0	0	0	0	0	0	0	0	0	0	7
WARREN	0	0	2	0	0	0	0	0	0	0	0	0	0	0	2
WESTMORELAND	1	1	48	0	0	6	0	19	8	1	0	15	0	0	99
Total	52	58	79	6	9	47	1	246	223	22	2	147	32	1	925

Attorney Representation Waived in Delinquency Proceedings
2007

	Trans. to Other Juv. Ct.	Complaint Withdrawn	Warned, Case Closed	Inf. Adjust.	Fines/ Costs	Dismissed Not Substan.	Ref. To Other Agency/Ind.	Consent Decree	Probation	Cont. on Prev. Disp.	Trans. to Crim. Court	Other Dispo.	Placement	Prob. w/ Day Treat.	Protect. Supvrn.	Total
ALLEGHENY	3	37	6	0	0	141	0	14	3	0	1	8	0	0	0	213
BEDFORD	0	0	0	0	0	2	0	0	0	0	0	0	0	0	0	2
BLAIR	2	2	0	0	10	27	0	58	3	2	0	0	1	0	0	105
BUCKS	1	4	0	0	0	0	0	0	0	0	0	1	0	0	0	6
BUTLER	1	0	1	0	1	0	0	1	0	0	0	0	0	0	0	4
CAMBRIA	0	0	0	0	1	0	0	0	0	0	0	0	0	0	0	1
CENTRE	0	1	0	0	1	0	0	25	6	1	0	0	0	0	0	34
CLEARFIELD	8	1	0	0	0	1	0	2	31	0	0	1	1	0	0	45
CRAWFORD	9	4	0	0	0	1	0	3	16	0	0	1	0	0	0	34
DAUPHIN	0	0	0	0	0	0	0	0	0	1	0	0	0	0	0	1
DELAWARE	2	4	0	0	0	0	0	5	21	0	1	0	9	0	0	42
ERIE	0	1	0	0	0	0	0	1	0	0	0	0	0	0	0	2
FOREST	0	1	0	0	0	0	0	1	1	0	0	0	0	0	0	3
FULTON	1	0	0	0	1	0	0	0	3	0	0	0	0	0	0	5
GREENE	0	0	0	0	0	0	0	0	3	0	0	0	0	0	0	3
JUNIATA	0	0	1	4	3	1	0	0	0	0	0	0	0	0	0	9
LACKAWANNA	0	1	0	8	1	7	0	27	29	4	0	12	11	0	0	100
LANCASTER	0	0	0	0	0	0	0	1	5	0	0	0	1	0	0	7
LAWRENCE	0	0	0	0	0	0	0	0	0	0	1	0	0	0	0	1
LEHIGH	6	1	9	0	1	1	0	1	44	8	0	3	5	0	0	79
LUZERNE	17	0	0	0	0	11	4	15	44	5	0	2	89	3	0	190
MCKEAN	4	0	0	0	0	0	0	27	11	0	0	1	0	0	0	43
NORTHAMPTON	0	0	0	0	0	0	0	0	0	3	0	0	0	0	0	3
PERRY	0	0	0	0	2	0	0	3	3	0	0	0	0	0	0	8
SNYDER	0	0	0	0	0	0	0	0	0	0	0	11	0	0	0	11
SOMERSET	0	7	0	0	0	0	0	0	1	0	0	0	0	0	0	8
VENANGO	0	0	0	0	0	0	0	4	0	0	0	0	0	0	0	4
WARREN	0	0	1	0	0	0	0	1	0	0	0	0	0	0	0	2
WESTMORELAND	4	0	27	1	0	1	0	7	17	0	0	43	0	0	3	103
WYOMING	0	0	0	0	1	0	0	0	1	0	0	0	0	0	0	2
Total	58	64	45	13	22	193	4	196	242	24	3	83	117	3	3	1,070

Attorney Representation Waived in Delinquency Proceedings
2000

	Trans. to Other Juv. Ct.	Complaint Withdrawn	Warned, Case Closed	Inf. Adjust.	Fines/ Costs	Dismissed Not Substan.	Ref. To Other Agy./Ind.	Consent Decree	Prob.	Cont. on Prev. Dispo.	Trans. to Crim. Ct.	Other Dispo.	Placmnt.	Protective Supvsn.	Prob. w/ Day Treat.	Total
ALLEGHENY	1	47	15	0	0	95	0	254	32	0	1	17	10	0	16	488
BEDFORD	0	0	0	0	0	0	0	5	0	0	0	0	0	0	0	5
BLAIR	3	1	0	0	40	1	0	52	5	10	0	0	1	0	0	113
BUCKS	0	3	0	1	0	0	0	2	7	0	0	0	2	0	0	15
CAMERON	0	0	0	0	0	0	0	1	0	0	0	0	0	0	0	1
CENTRE	2	2	3	2	3	1	0	15	2	0	0	1	0	0	0	31
CHESTER	14	0	2	7	0	5	0	33	47	0	1	0	10	0	0	119
CLEARFIELD	6	0	0	0	1	0	0	0	5	0	0	2	1	0	0	15
CRAWFORD	7	1	0	0	1	3	1	0	94	1	1	1	6	0	0	116
DAUPHIN	1	3	6	1	1	45	1	128	0	1	0	3	0	0	1	191
DELAWARE	110	178	0	0	0	44	0	241	726	0	9	0	133	0	0	1,441
ELK	0	0	0	0	0	0	0	0	0	0	0	1	0	0	0	1
ERIE	0	0	0	0	0	0	0	0	1	0	0	0	0	0	0	1
FOREST	0	1	0	0	0	0	0	0	0	0	0	0	0	0	0	1
FRANKLIN	0	0	0	0	0	0	0	0	3	0	0	0	0	0	0	3
FULTON	0	0	0	0	0	0	0	7	6	0	0	0	1	0	0	14
HUNTINGDON	0	0	0	0	1	0	0	2	2	0	0	0	0	0	0	5
JUNIATA	0	0	0	0	0	0	0	0	1	0	0	0	0	0	0	1
LACKAWANNA	12	2	1	0	0	1	0	2	52	1	1	5	26	0	0	103
LANCASTER	2	0	0	0	0	0	0	0	20	1	0	0	2	0	0	25
LEBANON	0	0	0	0	0	0	0	0	0	0	1	0	0	0	0	1
LEHIGH	8	1	0	0	1	0	0	1	44	5	0	0	2	0	0	62
LUZERNE	10	0	2	0	0	22	0	8	101	4	3	41	68	0	0	259
LYCOMING	0	0	0	1	0	0	0	0	0	0	0	0	0	0	0	1
MCKEAN	0	0	0	0	0	0	0	1	4	0	0	0	0	0	0	5
PERRY	0	0	0	0	1	0	0	5	8	0	0	0	2	0	0	16
PHILADELPHIA	0	1	0	0	0	0	0	0	0	0	0	0	0	0	0	1
SCHUYLKILL	2	0	0	0	0	0	0	1	2	0	0	0	0	0	0	5
SULLIVAN	0	0	0	0	0	0	0	0	2	0	0	0	0	0	0	2
WARREN	1	0	0	0	1	1	0	0	5	0	0	0	0	0	0	8
WAYNE	0	0	0	1	0	0	0	0	0	0	0	0	0	0	0	1
WESTMORELAND	5	6	27	40	16	6	32	3	3	2	0	4	0	3	0	147
WYOMING	0	0	0	0	0	0	0	0	1	0	0	0	0	0	0	1
Total	184	246	56	53	66	224	34	761	1173	25	17	75	264	3	17	3198