

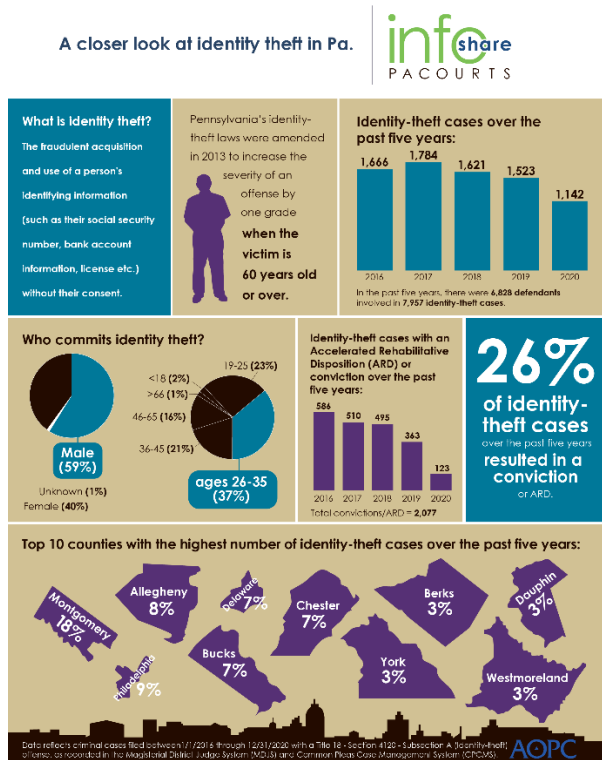
Infographic for Immediate Release
June 3, 2021

Identity-theft case trends in Pennsylvania

HARRISBURG – Over the last five years, Pennsylvania has seen a mostly gradual decrease in identity-theft cases. Identity theft is defined as the fraudulent use of another person’s identifying information (social security number, bank account information, license etc.).

The infographic below highlights key data including defendant demographics, identity-theft case counts and outcomes as well as county-level data where identity theft is most prevalent.

A high-resolution file of the graphic is available for download at www.pacourts.us under [Media Resources](#).



PA Courts InfoShare is a monthly product of the Administrative Office of Pennsylvania Courts (AOPC) that visually highlights the work of the courts with interesting data and statistics obtained through the judiciary's case management systems, interactive dashboards and other research. Reproduction is encouraged with source cited.



##

Media contact: [Kim Bathgate](#), 717-231-3331