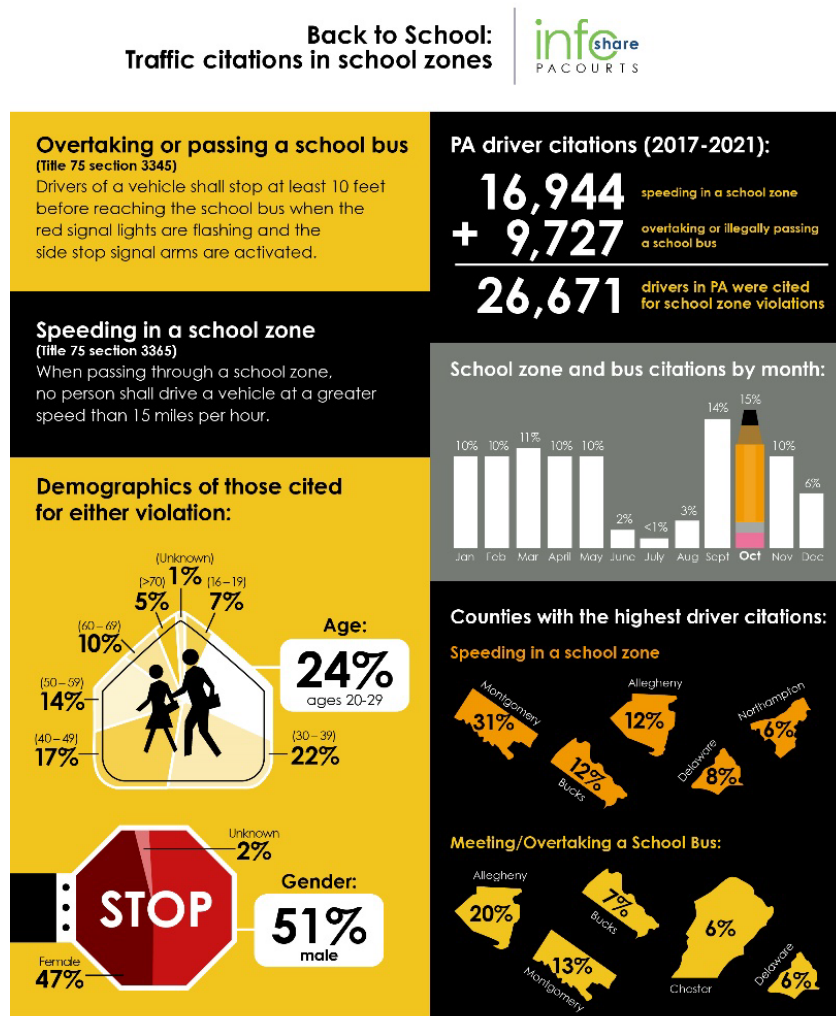


Infographic for Immediate Release
Aug. 12, 2022

Back-to-School is just around the corner -- Beware of school zone safety and traffic citations

HARRISBURG – In Pennsylvania, two school zone traffic laws have been cited more than **26,671** times over the past five years (2017-2021). The infographic below highlights key data and demographics about speeding in school zones or illegally passing a school bus.

[Download a high-resolution version](#) of the graphic. County-level detail is provided at the end of the release.



*Data as recorded in the Magisterial District Judge System and Philadelphia Municipal Court Traffic Division eIIMS System between 1/1/2017 - 12/31/2021 under Title 75 sections 3345 and 3365.

Title 75 School Zone violations issued from 1/1/2017 through 12/31/2021, as recorded in the Magisterial District Judge System (MDJS) and Philadelphia Municipal Court Traffic Division eTIMS System.; County Composition

Section / Offense Description	Filed Year					Total	% of Overall
	2017	2018	2019	2020	2021		
3345 /Overtaking School Bus	2,291	2,283	2,660	990	1,503	9,727	N/A
Adams	31	4	13	7	8	63	0.65%
Allegheny	453	433	564	169	294	1,913	19.67%
Armstrong	4	8	5	1	4	22	0.23%
Beaver	28	15	9	4	16	72	0.74%
Bedford	0	3	5	8	6	22	0.23%
Berks	149	122	84	23	39	417	4.29%
Blair	14	5	14	9	8	50	0.51%
Bradford	1	7	4	3	8	23	0.24%
Bucks	200	169	196	45	71	681	7.00%
Butler	38	64	82	59	61	304	3.13%
Cambria	21	17	11	6	21	76	0.78%
Cameron	2	0	0	0	0	2	0.02%
Carbon	10	6	5	1	6	28	0.29%
Centre	50	31	40	7	16	144	1.48%
Chester	161	155	153	50	75	594	6.11%
Clarion	7	7	4	1	4	23	0.24%
Clearfield	3	7	4	4	2	20	0.21%
Clinton	2	2	8	1	0	13	0.13%
Columbia	13	14	23	6	8	64	0.66%
Crawford	9	9	4	3	3	28	0.29%
Cumberland	26	30	33	16	29	134	1.38%
Dauphin	86	63	62	23	35	269	2.77%
Delaware	119	125	193	58	96	591	6.08%
Elk	1	3	3	0	3	10	0.10%
Erie	42	49	46	24	53	214	2.20%
Fayette	11	5	9	4	5	34	0.35%
Forest	0	0	0	0	1	1	0.01%
Franklin	9	7	12	4	9	41	0.42%
Fulton	1	4	1	2	0	8	0.08%
Greene	4	0	7	0	1	12	0.12%
Huntingdon	2	2	3	2	0	9	0.09%
Indiana	3	5	13	3	1	25	0.26%
Jefferson	7	5	8	3	4	27	0.28%
Juniata	2	2	1	0	1	6	0.06%
Lackawanna	44	39	21	8	13	125	1.29%
Lancaster	60	75	80	41	55	311	3.20%

Lawrence	4	9	6	1	5	25	0.26%
Lebanon	12	6	7	2	6	33	0.34%
Lehigh	70	60	64	29	93	316	3.25%
Luzerne	18	36	53	14	27	148	1.52%
Lycoming	12	7	12	6	3	40	0.41%
McKean	2	4	2	3	3	14	0.14%
Mercer	14	9	7	5	5	40	0.41%
Mifflin	7	9	10	1	15	42	0.43%
Monroe	18	12	20	10	15	75	0.77%
Montgomery	218	333	378	160	193	1,282	13.18%
Montour	0	0	2	0	3	5	0.05%
Northampton	52	34	56	20	33	195	2.00%
Northumberland	5	11	10	11	8	45	0.46%
Philadelphia	71	64	68	23	8	234	2.41%
Perry	6	3	2	1	1	13	0.13%
Pike	4	2	1	2	2	11	0.11%
Potter	0	2	2	2	2	8	0.08%
Schuylkill	29	14	15	8	16	82	0.84%
Snyder	1	2	8	4	3	18	0.19%
Somerset	4	1	3	0	2	10	0.10%
Sullivan	2	0	1	0	0	3	0.03%
Susquehanna	3	3	3	1	1	11	0.11%
Tioga	1	1	3	4	2	11	0.11%
Union	1	3	6	1	4	15	0.15%
Venango	11	15	7	5	11	49	0.50%
Warren	2	1	2	2	1	8	0.08%
Washington	25	24	35	14	9	107	1.10%
Wayne	3	0	9	2	2	16	0.16%
Westmoreland	21	36	32	21	16	126	1.30%
Wyoming	9	4	9	7	4	33	0.34%
York	53	86	107	36	54	336	3.45%
3365 / Speeding In School Zone	3,651	3,530	5,014	1,933	2,816	16,944	N/A
Adams	76	52	62	38	21	249	1.47%
Allegheny	714	453	482	181	133	1,963	11.59%
Armstrong	1	2	0	0	8	11	0.06%
Beaver	74	54	106	54	98	386	2.28%
Bedford	1	2	3	1	0	7	0.04%
Berks	114	119	130	37	90	490	2.89%
Blair	22	17	4	1	5	49	0.29%
Bucks	440	507	553	197	275	1,972	11.64%
Butler	35	28	34	12	14	123	0.73%
Cambria	16	16	17	13	11	73	0.43%
Cameron	0	1	0	1	1	3	0.02%
Carbon	2	15	19	4	2	42	0.25%
Centre	7	7	2	2	7	25	0.15%

Chester	149	174	146	27	59	555	3.28%
Clarion	6	1	0	0	0	7	0.04%
Clearfield	1	2	0	0	0	3	0.02%
Clinton	17	0	2	1	0	20	0.12%
Columbia	0	1	1	1	0	3	0.02%
Crawford	16	26	8	4	0	54	0.32%
Cumberland	32	37	69	18	26	182	1.07%
Dauphin	39	23	41	39	21	163	0.96%
Delaware	271	231	532	71	249	1,354	7.99%
Elk	6	6	1	1	1	15	0.09%
Erie	65	90	133	112	128	528	3.12%
Fayette	4	0	1	1	1	7	0.04%
Franklin	13	22	56	45	33	169	1.00%
Fulton	1	2	1	2	2	8	0.05%
Greene	9	1	1	1	14	26	0.15%
Huntingdon	0	0	2	1	0	3	0.02%
Indiana	3	7	0	4	11	25	0.15%
Jefferson	0	1	5	10	13	29	0.17%
Juniata	0	0	0	0	2	2	0.01%
Lackawanna	11	19	22	1	20	73	0.43%
Lancaster	17	12	19	26	135	209	1.23%
Lawrence	12	3	3	0	1	19	0.11%
Lebanon	28	17	54	17	16	132	0.78%
Lehigh	32	22	74	16	9	153	0.90%
Luzerne	35	76	33	15	85	244	1.44%
Lycoming	19	20	17	0	0	56	0.33%
McKean	0	2	2	0	2	6	0.04%
Mercer	6	40	23	2	33	104	0.61%
Monroe	0	0	0	0	4	4	0.02%
Montgomery	790	1,011	1,833	742	932	5,308	31.33%
Montour	1	0	0	0	1	2	0.01%
Northampton	247	191	262	115	155	970	5.72%
Northumberland	6	3	0	1	4	14	0.08%
Philadelphia	5	3	5	0	1	14	0.08%
Potter	0	0	7	0	0	7	0.04%
Schuylkill	23	15	14	1	0	53	0.31%
Snyder	0	0	0	0	2	2	0.01%
Somerset	52	27	9	2	1	91	0.54%
Tioga	0	3	0	0	0	3	0.02%
Union	38	8	11	9	2	68	0.40%
Venango	22	19	17	9	76	143	0.84%
Warren	9	0	0	1	0	10	0.06%
Washington	24	31	30	13	44	142	0.84%
Wayne	0	1	0	0	0	1	0.01%
Westmoreland	94	107	125	61	59	446	2.63%

Wyoming	0	2	1	0	0	3	0.02%
York	46	1	42	23	9	121	0.71%
Grand Total	5,942	5,813	7,674	2,923	4,319	26,671	N/A

PA Courts InfoShare is a monthly product of the Administrative Office of Pennsylvania Courts (AOPC) that visually highlights the work of the courts with interesting data and statistics obtained through the judiciary's case management systems, interactive dashboards and other research. Reproduction is permissible with source cited.



##

Media contact: Kimberly Bathgate, 717-231-3331