

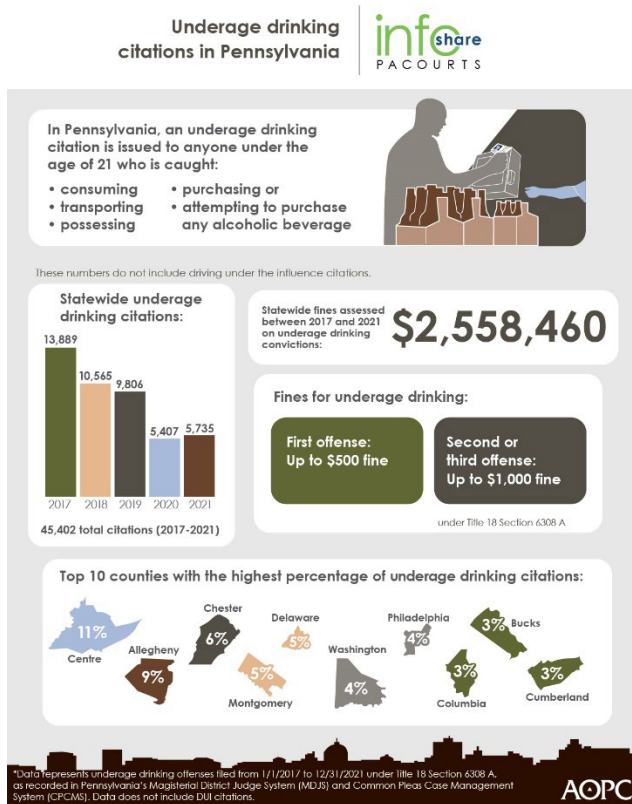
Infographic for Immediate Release
Feb 3, 2023

Underage Drinking Citations in Pennsylvania

HARRISBURG — Over the past five years, underage drinking citations statewide totaled 45,402. In Pennsylvania, an underage drinking citation is issued to anyone under the age of 21 who is caught possessing, consuming, transporting, purchasing or attempting to purchase any alcoholic beverage. These numbers *do not include driving under the influence citations*.

The infographic below highlights key data and demographics about underage drinking in Pennsylvania. Download a [high-resolution version](#) of the graphic.

County-specific data is available at the end of the news release.



PA Courts InfoShare is a monthly product of the Administrative Office of Pennsylvania Courts (AOPC) that visually highlights the work of the courts with interesting data and statistics

obtained through the judiciary's case management systems, interactive dashboards and other research. Reproduction is encouraged with source cited.



##

Media contact: [Kim Bathgate](#), 717-231-3331

Editor's Note:

Title 18 Section 6308 A (Purch Etc Alcoh Bev By A Minor) offenses filed from 1/1/2017 through 12/31/2021, as recorded in the Magisterial District Judge System (MDJS) and Common Pleas Case Management System (CPCMS).

County	2017	2018	2019	2020	2021	Total	Percentage of Overall
Adams	110	78	122	87	79	476	1.05%
Allegheny	1,313	976	711	437	470	3,907	8.61%
Armstrong	67	30	28	17	22	164	0.36%
Beaver	131	116	81	50	68	446	0.98%
Bedford	45	28	16	5	11	105	0.23%
Berks	327	238	244	158	125	1,092	2.41%
Blair	215	200	164	133	79	791	1.74%
Bradford	48	106	20	23	15	212	0.47%
Bucks	500	354	291	180	141	1,466	3.23%
Butler	303	199	277	140	159	1,078	2.37%
Cambria	75	60	97	51	60	343	0.76%
Cameron	4	5	0	0	2	11	0.02%
Carbon	31	18	15	29	22	115	0.25%
Centre	1,436	1,079	1,115	447	665	4,742	10.44%
Chester	877	594	579	289	494	2,833	6.24%
Clarion	95	91	65	38	30	319	0.70%
Clearfield	76	30	45	24	34	209	0.46%
Clinton	117	78	45	25	21	286	0.63%
Columbia	404	391	337	146	104	1,382	3.04%
Crawford	96	89	41	61	60	347	0.76%
Cumberland	412	254	258	210	212	1,346	2.96%
Dauphin	270	234	251	127	131	1,013	2.23%
Delaware	685	489	620	218	213	2,225	4.90%
Elk	29	36	24	23	24	136	0.30%
Erie	323	224	177	148	139	1,011	2.23%

Fayette	93	58	42	39	16	248	0.55%
Forest	1	4	1	1	0	7	0.02%
Franklin	101	90	63	53	42	349	0.77%
Fulton	11	5	8	0	5	29	0.06%
Greene	24	8	18	3	8	61	0.13%
Huntingdon	33	38	32	28	16	147	0.32%
Indiana	318	395	250	110	133	1,206	2.66%
Jefferson	38	21	23	12	20	114	0.25%
Juniata	26	8	9	10	16	69	0.15%
Lackawanna	259	242	300	106	151	1,058	2.33%
Lancaster	310	265	257	151	143	1,126	2.48%
Lawrence	52	55	34	35	33	209	0.46%
Lebanon	107	98	56	38	28	327	0.72%
Lehigh	169	100	100	41	45	455	1.00%
Luzerne	228	187	123	90	78	706	1.55%
Lycoming	154	115	88	53	67	477	1.05%
McKean	75	42	57	50	32	256	0.56%
Mercer	98	61	69	42	50	320	0.70%
Mifflin	46	25	23	18	24	136	0.30%
Monroe	190	98	68	36	45	437	0.96%
Montgomery	723	481	403	292	239	2,138	4.71%
Montour	4	4	13	4	8	33	0.07%
Northampton	458	233	181	123	119	1,114	2.45%
Northumberland	70	54	62	62	43	291	0.64%
Perry	26	33	20	17	14	110	0.24%
Philadelphia	458	498	428	169	299	1,852	4.08%
Pike	14	16	11	13	7	61	0.13%
Potter	10	2	11	22	18	63	0.14%
Schuylkill	76	75	76	36	17	280	0.62%
Snyder	22	19	38	37	16	132	0.29%
Somerset	71	51	50	44	12	228	0.50%
Sullivan	1	2	3	0	0	6	0.01%
Susquehanna	16	8	19	37	15	95	0.21%
Tioga	63	63	28	18	23	195	0.43%
Union	110	108	87	60	68	433	0.95%
Venango	45	27	18	27	14	131	0.29%
Warren	24	30	23	11	16	104	0.23%
Washington	605	438	674	98	183	1,998	4.40%
Wayne	16	10	17	11	8	62	0.14%
Westmoreland	304	219	145	114	128	910	2.00%
Wyoming	12	24	7	8	7	58	0.13%

York	439	258	248	222	149	1,316	2.90%
Grand Total	13,889	10,565	9,806	5,407	5,735	45,402	100.00%