

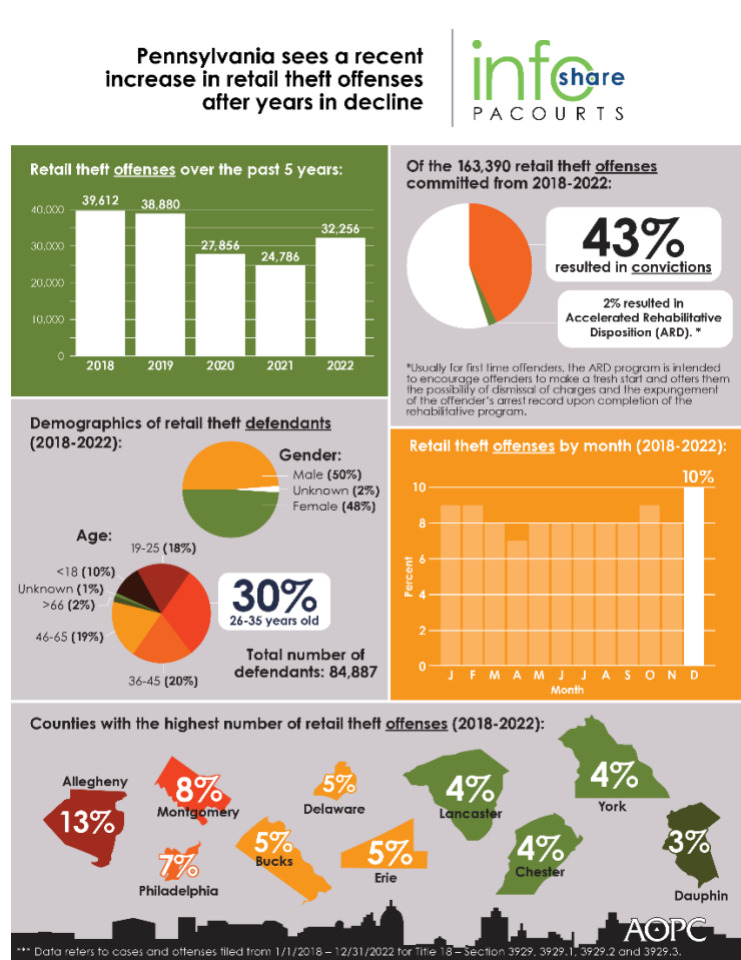
Infographic for Immediate Release
Dec. 8, 2023

Pennsylvania sees recent increase in retail theft offenses after years in decline

HARRISBURG — Retail theft offenses in Pennsylvania **increased by 30 percent** from 2021 to 2022, following years in decline.

The infographic highlights retail theft data from 2018 to 2022 including the statewide number of retail theft offenses by month, the top 10 counties with the highest number of retail theft offenses and statewide defendant demographics.

A high-resolution file of the graphic is available for download at www.pacourts.us under [Media Resources](#).



PA Courts InfoShare is a monthly product of the Administrative Office of Pennsylvania Courts (AOPC) that visually highlights the work of the courts with interesting data and statistics obtained through the judiciary's case management systems, interactive dashboards and other research. Reproduction is permissible with source cited.



##

Media contact: [Casey Scheffler](#), 610-425-1712

Editor's Note: County-by-county retail theft offenses filed from 1/1/2018-12/31/2022

County / Section	2018	2019	2020	2021	2022	Total	Percentage of Total
Adams	85	115	81	54	133	468	0.29%
3929	85	115	79	54	133	466	0.29%
3929.1	0	0	2	0	0	2	0.00%
Allegheny	5,485	5,389	3,281	2,688	3,708	20,551	12.58%
3929	5,421	5,341	3,267	2,674	3,693	20,396	12.48%
3929.1	1	1	1	0	1	4	0.00%
3929.2	6	11	0	0	0	17	0.01%
3929.3	57	36	13	14	14	134	0.08%
Armstrong	202	119	143	29	102	595	0.36%
3929	201	116	143	29	102	591	0.36%
3929.1	1	0	0	0	0	1	0.00%
3929.3	0	3	0	0	0	3	0.00%
Beaver	808	630	588	370	520	2,916	1.78%
3929	808	629	587	370	520	2,914	1.78%
3929.1	0	1	0	0	0	1	0.00%
3929.2	0	0	1	0	0	1	0.00%
Bedford	57	53	50	34	52	246	0.15%
3929	57	53	50	34	52	246	0.15%
Berks	905	830	776	701	1,013	4,225	2.59%
3929	903	830	775	700	1,013	4,221	2.58%
3929.2	2	0	1	1	0	4	0.00%
Blair	452	512	398	357	423	2,142	1.31%
3929	452	512	398	357	423	2,142	1.31%
Bradford	188	149	151	139	118	745	0.46%

3929	188	149	151	139	118	745	0.46%
Bucks	1,490	1,708	1,427	1,459	1,957	8,041	4.92%
3929	1,484	1,692	1,424	1,451	1,951	8,002	4.90%
3929.1	1	1	0	5	0	7	0.00%
3929.2	0	3	3	3	3	12	0.01%
3929.3	5	12	0	0	3	20	0.01%
Butler	804	610	518	570	697	3,199	1.96%
3929	804	605	517	566	697	3,189	1.95%
3929.2	0	2	1	0	0	3	0.00%
3929.3	0	3	0	4	0	7	0.00%
Cambria	517	334	238	140	251	1,480	0.91%
3929	517	334	238	140	251	1,480	0.91%
Cameron	5	1	2	2	6	16	0.01%
3929	5	1	2	2	5	15	0.01%
3929.3	0	0	0	0	1	1	0.00%
Carbon	209	99	142	92	62	604	0.37%
3929	209	99	142	92	62	604	0.37%
Centre	280	264	340	121	501	1,506	0.92%
3929	279	263	340	121	501	1,504	0.92%
3929.1	1	0	0	0	0	1	0.00%
3929.2	0	1	0	0	0	1	0.00%
Chester	1,332	1,161	955	1,112	1,202	5,762	3.53%
3929	1,319	1,150	951	1,102	1,199	5,721	3.50%
3929.1	1	1	0	0	0	2	0.00%
3929.2	11	5	3	1	2	22	0.01%
3929.3	1	5	1	9	1	17	0.01%
Clarion	109	87	52	61	48	357	0.22%
3929	107	87	52	61	48	355	0.22%
3929.3	2	0	0	0	0	2	0.00%
Clearfield	147	206	196	167	205	921	0.56%
3929	146	206	195	167	205	919	0.56%
3929.1	1	0	0	0	0	1	0.00%
3929.3	0	0	1	0	0	1	0.00%
Clinton	93	103	82	40	63	381	0.23%
3929	93	103	82	40	63	381	0.23%
Columbia	164	123	183	186	109	765	0.47%
3929	164	123	183	186	109	765	0.47%
Crawford	168	197	139	147	251	902	0.55%
3929	168	197	139	147	250	901	0.55%
3929.1	0	0	0	0	1	1	0.00%
Cumberland	954	923	839	1,013	1,082	4,811	2.94%

3929	940	920	833	1,011	1,067	4,771	2.92%
3929.1	0	0	0	0	1	1	0.00%
3929.2	7	0	0	0	0	7	0.00%
3929.3	7	3	6	2	14	32	0.02%
Dauphin	1,144	1,153	1,022	838	882	5,039	3.08%
3929	1,144	1,152	1,022	835	878	5,031	3.08%
3929.3	0	1	0	3	4	8	0.00%
Delaware	1,921	2,105	1,294	1,438	1,899	8,657	5.30%
3929	1,918	2,098	1,282	1,431	1,806	8,535	5.22%
3929.2	3	5	3	1	4	16	0.01%
3929.3	0	2	9	6	89	106	0.06%
Elk	163	112	92	100	124	591	0.36%
3929	163	112	92	100	124	591	0.36%
Erie	1,415	1,700	1,833	1,629	1,343	7,920	4.85%
3929	1,412	1,700	1,833	1,629	1,343	7,917	4.85%
3929.3	3	0	0	0	0	3	0.00%
Fayette	579	553	394	298	412	2,236	1.37%
3929	579	553	394	298	412	2,236	1.37%
Forest	1	0	0	5	2	8	0.00%
3929	1	0	0	5	2	8	0.00%
Franklin	390	455	405	477	391	2,118	1.30%
3929	390	455	405	477	391	2,118	1.30%
Fulton	21	19	14	8	15	77	0.05%
3929	21	19	14	8	15	77	0.05%
Greene	109	110	71	36	62	388	0.24%
3929	109	110	71	36	62	388	0.24%
Huntingdon	75	58	29	54	64	280	0.17%
3929	74	58	29	54	64	279	0.17%
3929.2	1	0	0	0	0	1	0.00%
Indiana	275	456	309	154	166	1,360	0.83%
3929	275	453	309	154	166	1,357	0.83%
3929.3	0	3	0	0	0	3	0.00%
Jefferson	33	81	42	20	28	204	0.12%
3929	33	81	42	20	28	204	0.12%
Juniata	12	10	4	11	9	46	0.03%
3929	12	10	4	11	9	46	0.03%
Lackawanna	528	454	343	272	396	1,993	1.22%
3929	524	454	341	270	396	1,985	1.21%
3929.2	4	0	2	1	0	7	0.00%
3929.3	0	0	0	1	0	1	0.00%
Lancaster	1,711	1,267	798	851	1,179	5,806	3.55%

3929	1,711	1,262	789	842	1,178	5,782	3.54%
3929.1	0	2	0	1	0	3	0.00%
3929.2	0	1	0	0	1	2	0.00%
3929.3	0	2	9	8	0	19	0.01%
Lawrence	301	187	267	137	177	1,069	0.65%
3929	301	186	267	137	177	1,068	0.65%
3929.3	0	1	0	0	0	1	0.00%
Lebanon	416	748	376	176	173	1,889	1.16%
3929	416	748	376	176	173	1,889	1.16%
Lehigh	1,349	1,319	615	491	764	4,538	2.78%
3929	1,349	1,319	614	491	764	4,537	2.78%
3929.2	0	0	1	0	0	1	0.00%
Luzerne	908	1,059	806	568	760	4,101	2.51%
3929	908	1,059	801	568	760	4,096	2.51%
3929.3	0	0	5	0	0	5	0.00%
Lycoming	308	344	225	165	193	1,235	0.76%
3929	308	344	225	165	193	1,235	0.76%
McKean	101	88	58	71	189	507	0.31%
3929	101	88	58	71	189	507	0.31%
Mercer	625	607	453	253	328	2,266	1.39%
3929	624	606	453	252	325	2,260	1.38%
3929.2	1	1	0	1	3	6	0.00%
Mifflin	61	106	61	63	97	388	0.24%
3929	60	106	61	63	97	387	0.24%
3929.1	1	0	0	0	0	1	0.00%
Monroe	823	808	567	486	657	3,341	2.04%
3929	819	808	559	485	652	3,323	2.03%
3929.3	4	0	8	1	5	18	0.01%
Montgomery	3,030	2,811	1,821	2,029	3,436	13,127	8.03%
3929	2,959	2,790	1,806	2,015	3,333	12,903	7.90%
3929.1	0	2	0	0	0	2	0.00%
3929.2	54	17	15	8	13	107	0.07%
3929.3	17	2	0	6	90	115	0.07%
Montour	22	19	17	18	7	83	0.05%
3929	20	19	17	18	7	81	0.05%
3929.3	2	0	0	0	0	2	0.00%
Northampton	586	614	330	256	425	2,211	1.35%
3929	584	612	330	256	425	2,207	1.35%
3929.2	2	2	0	0	0	4	0.00%
Northumberland	299	235	146	101	91	872	0.53%
3929	299	235	146	101	91	872	0.53%

Perry	22	24	58	27	7	138	0.08%
3929	22	24	58	27	7	138	0.08%
Philadelphia	3,297	3,184	1,856	1,383	1,810	11,530	7.06%
3929	3,289	3,182	1,853	1,383	1,807	11,514	7.05%
3929.1	0	0	0	0	1	1	0.00%
3929.2	1	2	1	0	1	5	0.00%
3929.3	7	0	2	0	1	10	0.01%
Pike	53	46	77	82	195	453	0.28%
3929	53	46	77	82	195	453	0.28%
Potter	3	4	2	4	7	20	0.01%
3929	3	4	2	4	7	20	0.01%
Schuylkill	353	485	288	178	221	1,525	0.93%
3929	353	485	288	178	220	1,524	0.93%
3929.3	0	0	0	0	1	1	0.00%
Snyder	131	215	93	250	124	813	0.50%
3929	130	215	93	250	124	812	0.50%
3929.1	1	0	0	0	0	1	0.00%
Somerset	137	177	124	90	102	630	0.39%
3929	137	177	123	90	102	629	0.38%
3929.3	0	0	1	0	0	1	0.00%
Sullivan	0	1	0	4	3	8	0.00%
3929	0	1	0	4	3	8	0.00%
Susquehanna	21	11	17	6	5	60	0.04%
3929	21	11	17	6	5	60	0.04%
Tioga	61	58	48	28	38	233	0.14%
3929	61	58	48	28	38	233	0.14%
Union	125	106	48	95	56	430	0.26%
3929	125	106	48	95	56	430	0.26%
Venango	109	93	70	45	74	391	0.24%
3929	109	93	70	45	74	391	0.24%
Warren	114	101	120	231	233	799	0.49%
3929	114	101	120	231	233	799	0.49%
Washington	630	552	390	315	393	2,280	1.40%
3929	630	552	390	315	393	2,280	1.40%
Wayne	100	71	84	108	124	487	0.30%
3929	100	71	84	108	124	487	0.30%
Westmoreland	1,114	1,324	808	750	1,012	5,008	3.07%
3929	1,112	1,321	808	750	1,010	5,001	3.06%
3929.1	1	0	0	0	0	1	0.00%
3929.2	0	0	0	0	1	1	0.00%
3929.3	1	3	0	0	1	5	0.00%

Wyoming	51	52	24	26	32	185	0.11%
3929	51	52	24	26	32	185	0.11%
York	1,631	1,285	776	677	1,048	5,417	3.32%
3929	1,631	1,280	774	677	1,046	5,408	3.31%
3929.3	0	5	2	0	2	9	0.01%
Grand Total	39,612	38,880	27,856	24,786	32,256	163,390	