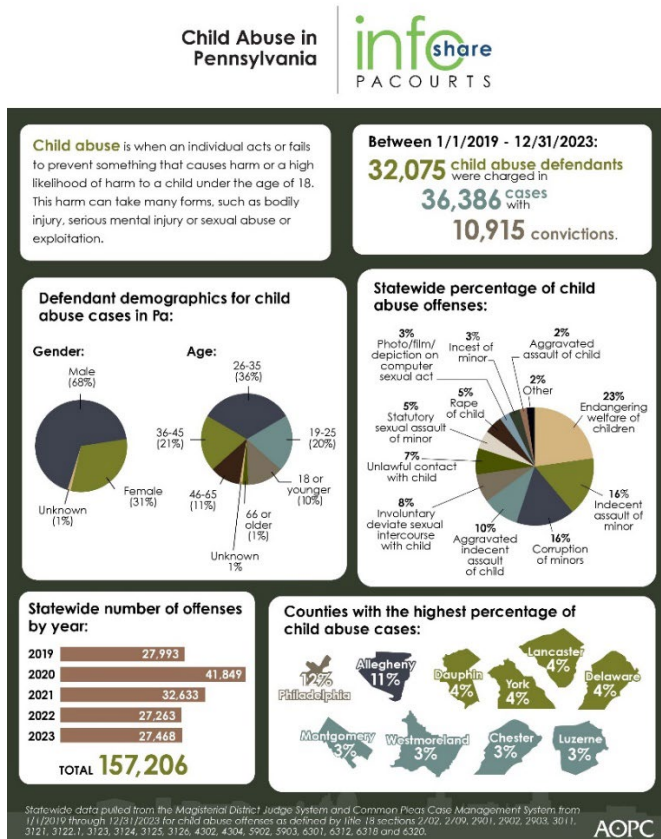


Infographic for Immediate Release
April 5, 2024

A look at Pennsylvania child abuse data during Child Abuse Awareness Month

HARRISBURG – Under Pennsylvania’s child abuse laws, 32,075 people were charged in 36,386 child abuse cases between 2019 to 2023, resulting in 10,915 case convictions. Of those defendants who were charged in child abuse cases, 56% were between the ages of 19-35 and 23% were charged with endangering the welfare of children.

The infographic below highlights key data and demographics about child abuse in Pennsylvania. [Download a high-resolution version](#) of the graphic. See editor’s note for county data detail.



PA Courts InfoShare is a monthly product of the Administrative Office of Pennsylvania Courts (AOPC) that visually highlights the work of the courts with interesting data and statistics obtained through the judiciary's case management systems, interactive dashboards and other research. Reproduction is permissible with source cited.



##

Media contact: Kim Bathgate, 717-576-4373

Editor's Note:

Statewide data pulled from the Magisterial District Judge System and Common Pleas Case Management System from 1/1/2019 through 12/31/2023 for child abuse offenses as defined by Title 18 sections 2702, 2709, 2901, 2902, 2903, 3011, 3121, 3122.1, 3123, 3124, 3125, 3126, 4302, 4304, 5902, 5903, 6301, 6312, 6318 and 6320.

Statewide number of **cases filed** from 1/1/2019 through 12/31/2023 for Child Abuse offenses, as recorded in the Magisterial District Judge System (MDJS) and Common Pleas Case Management System (CPCMS); Grouped by County

County	2019	2020	2021	2022	2023	Grand Total	% of Total
Adams	54	52	80	68	52	306	0.84%
Allegheny	997	834	814	742	721	4,108	11.29%
Armstrong	61	70	60	75	42	308	0.85%
Beaver	114	118	111	129	122	594	1.63%
Bedford	55	36	26	35	37	189	0.52%
Berks	154	133	148	137	105	677	1.86%
Blair	128	124	112	112	153	629	1.73%
Bradford	78	52	52	34	37	253	0.70%
Bucks	151	118	110	129	124	632	1.74%
Butler	76	83	60	71	66	356	0.98%
Cambria	124	124	124	103	85	560	1.54%
Cameron	2	15	8	5		30	0.08%
Carbon	59	62	49	48	39	257	0.71%
Centre	31	34	21	32	27	145	0.40%
Chester	228	227	224	186	165	1,030	2.83%
Clarion	50	24	36	23	19	152	0.42%

Clearfield	57	51	48	93	65	314	0.86%
Clinton	22	29	29	23	27	130	0.36%
Columbia	57	53	43	41	29	223	0.61%
Crawford	53	43	37	51	39	223	0.61%
Cumberland	189	202	139	180	159	869	2.39%
Dauphin	316	320	348	335	286	1,605	4.41%
Delaware	282	288	296	251	306	1,423	3.91%
Elk	27	46	38	35	25	171	0.47%
Erie	116	151	153	131	147	698	1.92%
Fayette	98	115	89	83	110	495	1.36%
Forest	6	2	4	4	3	19	0.05%
Franklin	162	138	93	97	98	588	1.62%
Fulton	12	13	12	6	14	57	0.16%
Greene	28	20	19	26	26	119	0.33%
Huntingdon	44	24	41	33	16	158	0.43%
Indiana	74	60	37	43	40	254	0.70%
Jefferson	48	74	59	44	50	275	0.76%
Juniata	20	10	15	27	14	86	0.24%
Lackawanna	188	153	145	146	170	802	2.20%
Lancaster	298	250	263	259	261	1,331	3.66%
Lawrence	50	54	45	34	55	238	0.65%
Lebanon	92	46	51	36	34	259	0.71%
Lehigh	55	50	56	49	75	285	0.78%
Luzerne	197	164	254	173	136	924	2.54%
Lycoming	115	103	108	140	85	551	1.51%
McKean	33	43	33	25	30	164	0.45%
Mercer	145	129	144	113	110	641	1.76%
Mifflin	23	22	36	19	24	124	0.34%
Monroe	189	170	161	139	119	778	2.14%
Montgomery	267	250	230	262	219	1,228	3.37%
Montour	14	10	8	4	11	47	0.13%
Northampton	156	95	99	100	97	547	1.50%
Northumberland	99	91	96	58	95	439	1.21%
Perry	43	49	54	54	46	246	0.68%
Philadelphia	989	692	1,001	864	985	4,531	12.45%
Pike	37	26	30	30	23	146	0.40%
Potter	40	30	21	16	6	113	0.31%
Schuylkill	105	87	82	70	63	407	1.12%
Snyder	41	52	31	27	20	171	0.47%
Somerset	77	70	66	64	54	331	0.91%
Sullivan	2	6	3	10	7	28	0.08%

Susquehanna	10	25	26	20	13	94	0.26%
Tioga	22	23	19	21	22	107	0.29%
Union	34	22	30	23	16	125	0.34%
Venango	88	89	62	70	66	375	1.03%
Warren	46	40	37	26	36	185	0.51%
Washington	105	105	94	88	117	509	1.40%
Wayne	29	31	23	29	17	129	0.35%
Westmoreland	211	238	225	249	241	1,164	3.20%
Wyoming	18	24	26	13	27	108	0.30%
York	326	308	244	207	241	1,326	3.64%
Grand Total	8,117	7,292	7,338	6,870	6,769	36,386	N/A