

Infographic for Immediate Release

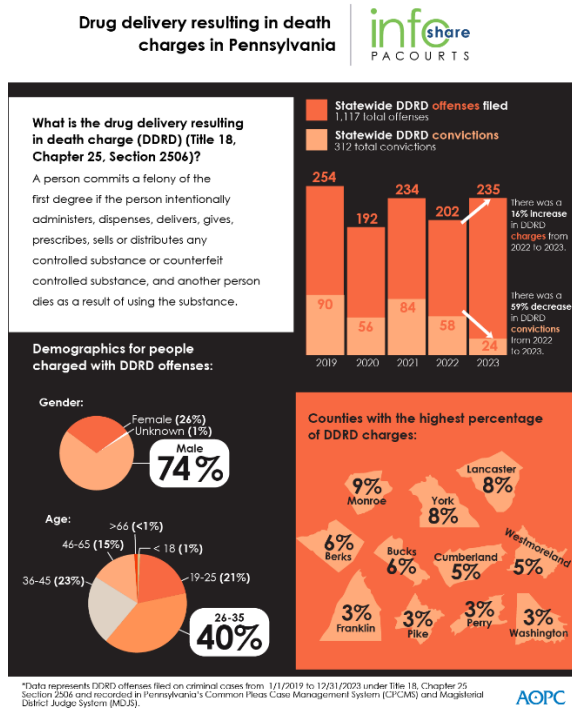
June 13, 2024

Drug Delivery Resulting in Death Offenses and Convictions in Pennsylvania

HARRISBURG- In Pennsylvania, a drug delivery resulting in death (DDR) charge, also known as an offense, is issued to a person who intentionally administers, dispenses, delivers, gives, prescribes, sells or distributes any controlled substance, and another person died as a result of using the substance.

DDR offenses have increased by 16% from 2022 to 2023 and DDR convictions have decreased by 59%.

The infographic below highlights key data and demographics about DDR charges and convictions in Pennsylvania over the past five years. [Download a high-resolution file of the graphic](#) and view county-by-county stats included at the end of this release.



PA Courts InfoShare is a monthly product of the Administrative Office of Pennsylvania Courts (AOPC) that visually highlights the work of the courts with interesting data and statistics obtained through the judiciary's case management systems, interactive dashboards and other research. Reproduction is encouraged with source cited.



Media Contact: [Olivia Antonucci](#), 609-238-5182

Editors Note:

Statewide number of offenses filed on criminal cases from 1/1/2019 through 12/31/2023 for a Drug Delivery Resulting in Death Offense: Grouped by County.

County	2019	2020	2021	2022	2023	Total	Percentage of Total
Adams	0	3	0	0	0	3	0.27%
Allegheny	3	1	1	2	5	12	1.07%
Armstrong	6	2	0	0	0	8	0.72%
Beaver	4	6	6	1	4	21	1.88%
Bedford	0	2	1	3	0	6	0.54%
Berks	4	3	12	1	43	63	5.64%
Blair	2	4	2	8	8	24	2.15%
Bradford	0	0	1	1	0	2	0.18%
Bucks	4	11	17	25	12	69	6.18%
Butler	4	1	1	2	0	8	0.72%
Cambria	2	1	0	0	2	5	0.45%
Centre	1	0	1	4	1	7	0.63%
Chester	11	5	1	3	5	25	2.24%
Clarion	6	0	0	0	5	11	0.98%
Clearfield	0	2	1	2	2	7	0.63%
Columbia	0	0	1	1	0	2	0.18%
Crawford	1	0	0	0	0	1	0.09%
Cumberland	15	12	7	19	7	60	5.37%
Dauphin	8	5	3	8	0	24	2.15%
Delaware	4	0	9	2	2	17	1.52%
Elk	4	3	2	11	6	26	2.33%
Erie	1	1	2	0	9	13	1.16%
Fayette	3	2	8	1	11	25	2.24%
Franklin	2	12	9	7	2	32	2.86%
Fulton	0	0	1	1	1	3	0.27%
Greene	0	0	1	0	0	1	0.09%
Huntingdon	1	0	0	0	4	5	0.45%
Indiana	0	0	1	0	4	5	0.45%
Jefferson	0	0	0	0	4	4	0.36%
Lackawanna	2	8	2	0	3	15	1.34%
Lancaster	22	18	16	21	8	85	7.61%
Lawrence	1	0	0	0	0	1	0.09%
Lebanon	0	0	4	1	3	8	0.72%

Lehigh	2	0	2	1	3	8	0.72%
Luzerne	1	0	1	6	3	11	0.98%
Lycoming	0	1	1	1	2	5	0.45%
McKean	0	0	0	1	2	3	0.27%
Mercer	2	4	4	5	8	23	2.06%
Mifflin	1	0	1	0	1	3	0.27%
Monroe	11	35	25	11	14	96	8.59%
Montgomery	11	2	12	7	7	39	3.49%
Northampton	2	1	6	2	1	12	1.07%
Northumberland	0	0	0	1	5	6	0.54%
Perry	0	9	9	6	8	32	2.86%
Philadelphia	0	2	5	2	0	9	0.81%
Pike	18	5	8	4	0	35	3.13%
Schuylkill	0	1	0	0	5	6	0.54%
Snyder	0	0	1	0	0	1	0.09%
Somerset	11	3	6	0	0	20	1.79%
Tioga	0	0	0	0	2	2	0.18%
Union	0	4	0	0	0	4	0.36%
Venango	4	1	2	4	1	12	1.07%
Warren	2	0	0	0	2	4	0.36%
Washington	4	9	15	2	4	34	3.04%
Wayne	4	1	0	3	1	9	0.81%
Westmoreland	25	7	16	6	3	57	5.10%
Wyoming	1	0	0	0	1	2	0.18%
York	44	5	10	16	11	86	7.70%
	254	192	234	202	235	1,117	n/a