

Infographic for Immediate Release

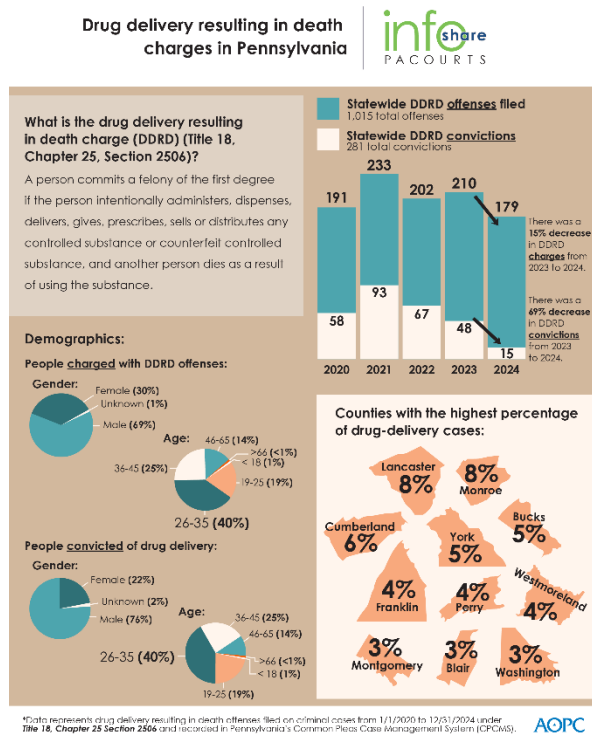
June 13, 2025

Drug Delivery Resulting in Death Charges in Pennsylvania

HARRISBURG- In Pennsylvania, a drug delivery resulting in death (DDRD) charge, also known as an offense, is issued to a person who intentionally administers, dispenses, delivers, gives, prescribes, sells or distributes any controlled substance, and another person died as a result of using the substance.

From 2023 to 2024, DDRD charges **decreased by 15%** and convictions **decreased by 69%**.

The infographic below highlights key data and demographics about DDRD charges and convictions in Pennsylvania over the past five years. [Download a high-resolution file of the graphic](#) and view county-by-county stats included at the end of this release.



PA Courts InfoShare is a monthly product of the Administrative Office of Pennsylvania Courts (AOPC) that visually highlights the work of the courts with interesting data and statistics obtained through the judiciary's case management systems, interactive dashboards and other research. Reproduction is encouraged with source cited.



Media Contact: [Olivia Antonucci](#), 609-238-5182

Editors Note:

Statewide number of criminal cases filed from 1/1/2020 through 12/31/2024 with a Drug Delivery Resulting in Death Offense; Grouped by County

The figures provided include the following charges related to Drug Delivery Resulting in Death:

- 18 - 2506 - A (Drug Delivery Resulting In Death)
- 18 - 2506 - A (Conspiracy - Drug Delivery Resulting In Death)
- 18 - 2506 - A (Criminal Conspiracy Engaging - Drug Delivery Resulting In Death)
- 18 - 2506 - A (Criminal Solicitation - Drug Delivery Resulting In Death)
- 18 - 2506 - A (Criminal Attempt - Drug Delivery Resulting In Death)

County	2020	2021	2022	2023	2024	Total	Percentage of Total
Adams	3	0	0	0	0	3	0.39%
Allegheny	1	1	1	2	8	13	1.68%
Armstrong	2	0	0	0	1	3	0.39%
Beaver	6	6	1	3	3	19	2.45%
Bedford	2	1	3	0	0	6	0.77%
Berks	3	9	1	4	1	18	2.32%
Blair	4	2	8	5	4	23	2.97%
Bradford	0	1	1	0	0	2	0.26%
Bucks	7	10	12	6	3	38	4.90%
Butler	1	1	2	0	1	5	0.65%
Cambria	1	0	0	2	1	4	0.52%
Carbon	0	0	0	0	1	1	0.13%
Centre	0	1	2	1	0	4	0.52%
Chester	5	1	3	4	8	21	2.71%
Clarion	0	0	0	2	11	13	1.68%
Clearfield	2	1	2	2	4	11	1.42%
Columbia	0	1	1	0	0	2	0.26%
Crawford	0	0	0	0	1	1	0.13%
Cumberland	12	7	14	6	6	45	5.81%
Dauphin	4	3	7	0	5	19	2.45%
Delaware	0	5	2	2	0	9	1.16%
Elk	3	1	7	4	0	15	1.94%
Erie	1	2	0	8	4	15	1.94%
Fayette	1	4	1	8	4	18	2.32%

Franklin	12	8	5	2	7	34	4.39%
Fulton	0	1	1	1	0	3	0.39%
Greene	0	1	0	0	5	6	0.77%
Huntingdon	0	0	0	4	1	5	0.65%
Indiana	0	1	0	4	0	5	0.65%
Jefferson	0	0	0	4	1	5	0.65%
Lackawanna	7	2	0	3	0	12	1.55%
Lancaster	17	13	16	6	8	60	7.74%
Lawrence	0	0	0	0	1	1	0.13%
Lebanon	0	2	1	3	0	6	0.77%
Lehigh	0	2	1	2	3	8	1.03%
Luzerne	0	1	6	2	2	11	1.42%
Lycoming	1	1	1	2	0	5	0.65%
McKean	0	0	1	2	0	3	0.39%
Mercer	4	3	4	7	2	20	2.58%
Mifflin	0	1	0	1	0	2	0.26%
Monroe	22	15	7	9	8	61	7.87%
Montgomery	2	10	5	5	0	22	2.84%
Northampton	1	6	2	0	1	10	1.29%
Northumberland	0	0	1	3	0	4	0.52%
Perry	9	9	4	5	3	30	3.87%
Philadelphia	2	4	2	0	1	9	1.16%
Pike	3	5	2	0	0	10	1.29%
Schuylkill	1	0	0	4	2	7	0.90%
Snyder	0	1	0	0	1	2	0.26%
Somerset	3	4	0	0	0	7	0.90%
Tioga	0	0	0	1	1	2	0.26%
Union	2	0	0	0	0	2	0.26%
Venango	1	2	4	1	1	9	1.16%
Warren	0	0	0	2	0	2	0.26%
Washington	8	6	2	1	9	26	3.35%
Wayne	1	0	2	1	0	4	0.52%
Westmoreland	7	15	6	1	4	33	4.26%
Wyoming	0	0	0	1	0	1	0.13%
York	4	8	12	7	9	40	5.16%
Grand Total	165	178	153	143	136	775	n/a