

Infographic for Immediate Release

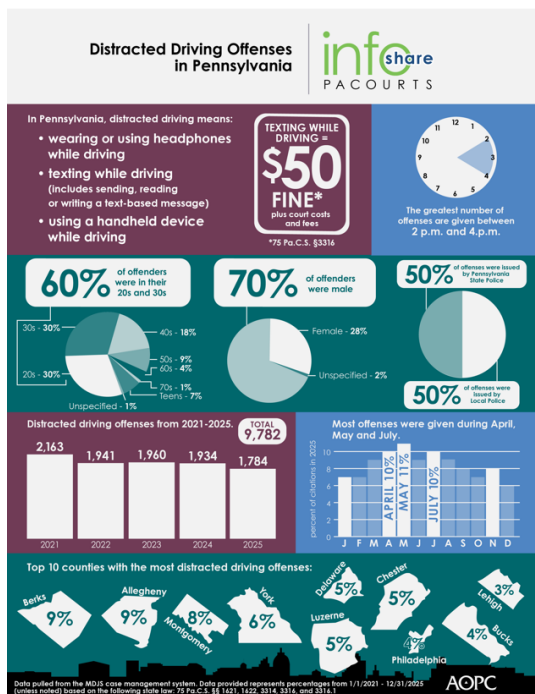
April 9, 2026

Distracted Driving Offenses in Pennsylvania

HARRISBURG – Pennsylvania had over **9,000 offenses** reported between **2021 and 2025**. New data reveals that people in their **20’s and 30’s are the most common offenders** and violations peak between 2 p.m. and 4 p.m.

Distracted driving offenses in Pennsylvania can be issued for 1) using headphones while driving, 2) using a handheld mobile phone while driving or 3) texting while driving. Texting includes sending, reading or writing a text-based message.

The infographic below highlights key data and demographics about distracted drivers in Pennsylvania over the last five years (2021 – 2025). A high-resolution file of the graphic is available for download at www.pacourts.us under [Media Resources](#). See editor’s note for detailed county data.



PA Courts InfoShare is a monthly product of the Administrative Office of Pennsylvania Courts (AOPC) that visually highlights the work of the courts with interesting data and statistics obtained through the judiciary’s case management systems, interactive dashboards and other research. Reproduction is permissible with source cited.

###

Media contact: [Olivia Antonucci](#), 609-238-5182

Editor's Note:

Statewide Count of distracted driving offenses filed from 1/1/2021 through 12/31/2025, as recorded in the Magisterial District Judge System (MDJS) and Philadelphia Municipal Court Traffic Division eTIMS System; Grouped by County

County	2021	2022	2023	2024	2025	Total	Percentage of Total
Adams	31	18	27	26	15	117	1.20%
Allegheny	219	153	172	156	155	855	8.74%
Armstrong	8	8	7	5	5	33	0.34%
Beaver	10	17	17	12	13	69	0.71%
Bedford	11	11	25	5	11	63	0.64%
Berks	83	82	84	184	160	593	6.06%
Blair	18	9	14	19	8	68	0.70%
Bradford	7	14	11	8	4	44	0.45%
Bucks	56	52	53	63	71	295	3.02%
Butler	21	32	30	23	22	128	1.31%
Cambria	11	11	9	4	1	36	0.37%
Cameron	1	0	1	0	0	2	0.02%
Carbon	19	15	13	11	10	68	0.70%
Centre	12	10	18	12	6	58	0.59%
Chester	102	116	116	119	96	549	5.61%
Clarion	4	8	21	11	1	45	0.46%
Clearfield	10	18	17	8	10	63	0.64%
Clinton	15	12	5	3	1	36	0.37%
Columbia	25	38	18	13	20	114	1.17%
Crawford	16	12	9	18	12	67	0.68%
Cumberland	95	58	51	43	47	294	3.01%
Dauphin	75	73	75	42	52	317	3.24%
Delaware	95	109	89	149	85	527	5.39%
Elk	16	6	6	5	3	36	0.37%
Erie	44	43	28	29	19	163	1.67%
Fayette	22	21	20	8	20	91	0.93%
Forest	2	3	1	3	2	11	0.11%
Franklin	40	45	50	42	51	228	2.33%
Fulton	3	3	1	3	0	10	0.10%
Greene	5	17	8	5	6	41	0.42%
Huntingdon	4	4	8	2	7	25	0.26%
Indiana	7	5	7	4	2	25	0.26%
Jefferson	10	11	12	13	14	60	0.61%

Juniata	2	6	5	5	0	18	0.18%
Lackawanna	45	39	51	56	34	225	2.30%
Lancaster	58	81	81	59	56	335	3.42%
Lawrence	13	11	10	9	5	48	0.49%
Lebanon	28	20	33	19	28	128	1.31%
Lehigh	78	64	98	76	58	374	3.82%
Luzerne	84	94	108	88	86	460	4.70%
Lycoming	12	11	6	16	7	52	0.53%
McKean	6	9	12	9	13	49	0.50%
Mercer	30	17	26	20	17	110	1.12%
Mifflin	7	4	6	6	0	23	0.24%
Monroe	35	40	30	34	32	171	1.75%
Montgomery	221	150	122	158	151	802	8.20%
Montour	3	3	3	3	2	14	0.14%
Northampton	54	40	35	45	42	216	2.21%
Northumberland	8	5	9	10	7	39	0.40%
Perry	10	6	10	6	12	44	0.45%
Philadelphia	61	56	41	49	80	287	2.93%
Pike	12	10	9	9	9	49	0.50%
Potter	7	6	6	3	2	24	0.25%
Schuylkill	28	18	24	12	10	92	0.94%
Snyder	17	12	13	4	7	53	0.54%
Somerset	6	10	5	6	6	33	0.34%
Sullivan	0	1	0	3	1	5	0.05%
Susquehanna	21	25	20	11	5	82	0.84%
Tioga	7	10	5	7	4	33	0.34%
Union	4	3	6	5	4	22	0.22%
Venango	21	10	7	4	2	44	0.45%
Warren	6	3	2	7	4	22	0.22%
Washington	25	18	38	21	24	126	1.29%
Wayne	8	2	5	2	5	22	0.22%
Westmoreland	54	32	38	34	36	194	1.98%
Wyoming	3	4	3	8	4	22	0.22%
York	92	87	70	82	102	433	4.43%
Grand Total	2,163	1,941	1,960	1,934	1,784	9,782	N/A